



Universiteit
Leiden
The Netherlands

Detection of CO emission lines in the dayside atmospheres of WASP-33b and WASP-189b with GIANO

Yan, F.; Pallé, E.; Reiners, A.; Casasayas Barris, N.; Cont, D.; Stangret, M.; ... ; Molaverdikhani, K.

Citation

Yan, F., Pallé, E., Reiners, A., Casasayas Barris, N., Cont, D., Stangret, M., ... Molaverdikhani, K. (2022). Detection of CO emission lines in the dayside atmospheres of WASP-33b and WASP-189b with GIANO. *Astronomy & Astrophysics*, 661.
doi:10.1051/0004-6361/202243503

Version: Publisher's Version

License: [Creative Commons CC BY 4.0 license](https://creativecommons.org/licenses/by/4.0/)

Downloaded from: <https://hdl.handle.net/1887/3515367>

Note: To cite this publication please use the final published version (if applicable).

LETTER TO THE EDITOR

Detection of CO emission lines in the dayside atmospheres of WASP-33b and WASP-189b with GIANO

F. Yan (✉) ¹, E. Pallé^{2,3}, A. Reiners¹, N. Casasayas-Barris⁴, D. Cont¹, M. Stangret^{2,3}, L. Nortmann¹, P. Mollière⁵, Th. Henning⁵, G. Chen^{6,7}, and K. Molaverdikhani^{8,9,5}

¹ Institut für Astrophysik, Georg-August-Universität, Friedrich-Hund-Platz 1, 37077 Göttingen, Germany
e-mail: fei.yan@uni-goettingen.de

² Instituto de Astrofísica de Canarias (IAC), Calle Vía Lactea s/n, 38200 La Laguna, Tenerife, Spain

³ Departamento de Astrofísica, Universidad de La Laguna, 38026 La Laguna, Tenerife, Spain

⁴ Leiden Observatory, Leiden University, Postbus 9513, 2300 RA Leiden, The Netherlands

⁵ Max-Planck-Institut für Astronomie, Königstuhl 17, 69117 Heidelberg, Germany

⁶ Key Laboratory of Planetary Sciences, Purple Mountain Observatory, Chinese Academy of Sciences, Nanjing 210023, PR China

⁷ CAS Center for Excellence in Comparative Planetology, Hefei 230026, PR China

⁸ Universitäts-Sternwarte, Ludwig-Maximilians-Universität München, Scheinerstrasse 1, 81679 München, Germany

⁹ Exzellenzcluster Origins, Boltzmannstraße 2, 85748 Garching, Germany

Received 8 March 2022 / Accepted 20 April 2022

ABSTRACT

Ultra-hot Jupiters (UHJs) are expected to possess temperature inversion layers in their dayside atmospheres. Recent thermal emission observations have discovered several atomic and molecular species along with temperature inversions in UHJs. We observed the thermal emission spectra of two UHJs (WASP-33b and WASP-189b) with the GIANO-B high-resolution near-infrared spectrograph. Using the cross-correlation technique, we detected carbon monoxide (CO) in the dayside atmospheres of both planets. The detected CO lines are in emission, which agrees with previous discoveries of iron emission lines and temperature inversions in the two planets. This is the first detection of CO lines in emission with high-resolution spectroscopy. Further retrieval work combining the CO lines with other spectral features will enable a comprehensive understanding of the atmospheric properties such as temperature structures and C/O ratios. The detected CO and iron emission lines of WASP-189b have redshifted radial velocities of several km s⁻¹, which likely originate from a dayside to nightside wind in its atmosphere. Such a redshifted velocity has not been detected for the emission lines of WASP-33b, suggesting that the atmospheric circulation patterns of the two UHJs may be different.

Key words. planets and satellites: atmospheres – techniques: spectroscopic – planets and satellites: individual: WASP-33b – planets and satellites: individual: WASP-189b

1. Introduction

Characterizing the atmosphere of ultra-hot Jupiters (UHJs) has become a fast expanding subject in the field of exoplanet science. Ground-based high-resolution spectroscopy, in particular, plays an important role in discovering chemical species in the atmosphere of UHJs. For example, many species have been detected via high-resolution transmission spectroscopy in the hottest known exoplanet – KELT-9b, including hydrogen Balmer lines, Fe I, Fe II, Ti II, Ca II, Mg I, and O I (Yan & Henning 2018; Hoeijmakers et al. 2018, 2019; Yan et al. 2019; Cauley et al. 2019; Turner et al. 2020; Wyttenbach et al. 2020; Borsa et al. 2021b; Pai Asnodkar et al. 2022). Various chemical species have also been discovered in other UHJs such as KELT-20b/MASCARA-2b (Casasayas-Barris et al. 2018, 2019; Stangret et al. 2020; Hoeijmakers et al. 2020a; Rainer et al. 2021), WASP-76b (Seidel et al. 2019; Žák et al. 2019; Ehrenreich et al. 2020; Taberner et al. 2021; Casasayas-Barris et al. 2021; Deibert et al. 2021; Landman et al. 2021; Kesseli et al. 2022), WASP-121b (Sing et al. 2019; Bourrier et al. 2020; Cabot et al. 2020;

Ben-Yami et al. 2020; Hoeijmakers et al. 2020b; Borsa et al. 2021a), TOI-1518b (Cabot et al. 2021), and HAT-P-70b (Bello-Arufe et al. 2022).

Thermal emission spectroscopy has also been used in characterizing the dayside atmosphere of UHJs. For example, atomic Fe I emission lines have been detected in KELT-9b (Pino et al. 2020; Kasper et al. 2021), WASP-189b (Yan et al. 2020), WASP-33b (Nugroho et al. 2020; Cont et al. 2021), and KELT-20b (Yan et al. 2022). We note that OH and TiO emission lines were found in WASP-33b (Nugroho et al. 2021; Cont et al. 2021). Cont et al. (2022) have recently reported the detection of Si I in WASP-33b and KELT-20b. The spectral lines of these detected species are all in emission, which unambiguously indicates the presence of temperature inversion layers on the dayside of these UHJs. These observational results agree with theoretical simulations, which predict the existence of temperature inversions in UHJs (e.g., Lothringer et al. 2018; Kitzmann et al. 2018; Helling et al. 2019; Fossati et al. 2021).

In addition to these high-resolution studies, space-based low-resolution emission spectroscopy has also been widely used in studying temperature inversions. For example, strong H₂O

emission features have been found in WASP-121b (Evans et al. 2017) and KELT-20b (Fu et al. 2022) with the *Hubble* Space Telescope. Evidence of carbon monoxide (CO) emission has been inferred from the *Spitzer* photometric observations at $3.6\mu\text{m}$ in several UHJs (e.g., WASP-103, WASP-18b, and KELT-20b; Sheppard et al. 2017; Kreidberg et al. 2018).

Here, we present the high-resolution detection of CO emission lines in the dayside atmospheres of two UHJs (WASP-33b and WASP-189b) with the GIANO-B spectrograph. This is the first detection of CO lines with an emission line profile since previous high-resolution CO lines were only detected in absorption (e.g., Snellen et al. 2010; Brogi et al. 2012; Konopacky et al. 2013; Line et al. 2021; Giacobbe et al. 2021). We notice that, during the refereeing process of this manuscript, van Sluijs et al. (2022) also reported the detection of CO emission lines in WASP-33b.

The atmospheres of the two UHJs presented in this work were observed with other instruments before. For WASP-33b, hydrogen Balmer lines and Ca II have been detected in its transmission spectrum (Yan et al. 2019, 2021) and emission lines of Fe I, OH, TiO, and Si I have been discovered on WASP-33b's dayside. For WASP-189b, Fe I emission lines have been detected in its dayside atmosphere (Yan et al. 2020), and various chemical species (e.g., Fe I, Fe II, Ti I, Cr I, and TiO) have been detected in its transmission spectrum (Stangret et al. 2022; Prinoth et al. 2022). The detected transmission lines of these species have different radial velocities (RVs), indicating a three-dimensional thermo-chemical stratification at the terminator of WASP-189b (Prinoth et al. 2022).

The paper is organized as follows. We describe the observations and data reduction in Sect. 2 and the methods in Sect. 3. In Sect. 4, we present the results and discussions. The conclusions are provided in Sect. 5.

2. Observations and data reduction

We observed WASP-33b on 15 October 2020 and WASP-189b on 13 April 2019 and 29 April 2019 with the GIARPS instrument (Claudi et al. 2016) mounted on the Telescopio Nazionale *Galileo*. To observe the dayside hemispheres, we performed the observations at planetary orbital phases near the secondary eclipse (Fig. 1). The detailed observation logs are presented in Table 1. The GIARPS instrument is the combination of the HARPS-N and GIANO-B spectrograph, which allows for simultaneous observations in the visible and near-infrared (NIR) wavelengths. The HARPS-N data have been used to study the Fe I emission lines in WASP-189b (Yan et al. 2020) and WASP-33b (Cont et al. 2021). In this work, we use only the GIANO-B data to search for CO lines. GIANO-B is a NIR high-resolution spectrograph ($R \sim 50\,000$) that consists of 50 echelle orders with a wavelength coverage of $0.95\text{--}2.45\mu\text{m}$ (Claudi et al. 2017). The observations were carried out in the ABAB nodding mode, which enables the subtraction of sky background and detector noise using the AB pairs of the spectra.

The raw spectra were reduced with the GOFIO pipeline (Rainer et al. 2018). The pipeline reduced spectra consist of two data sequences – one in nodding position A and the other in nodding position B. The A and B spectra were treated separately in the following reduction procedures. We normalized the spectra order-by-order using a polynomial fit. Because each spectral order spans two detectors with a flux jump in the middle, we divided each order into two sections and normalized them separately.

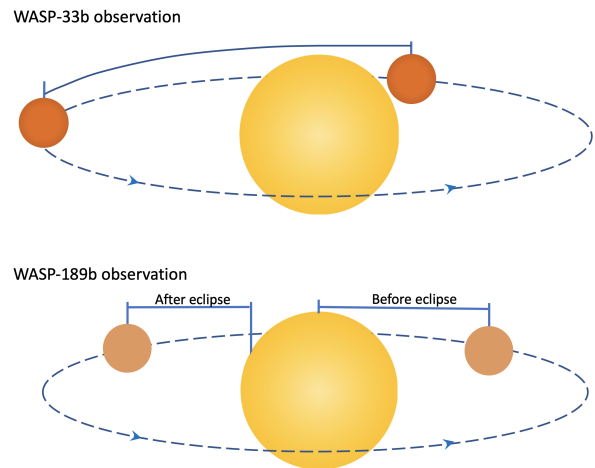


Fig. 1. Schematic of the orbital phase coverage of the GIANO-B observations.

The wavelength solution of the GIANO-B spectrograph is known to be unstable between consecutive exposures (Brogi et al. 2018). Therefore, we performed additional wavelength corrections following the method in Guilluy et al. (2019) and Giacobbe et al. (2021). Since the CO lines are located at the first two spectral orders of the spectrograph (i.e., the reddest two orders), we only performed the correction for these two orders. For each data set, we first aligned each observed spectrum to the averaged spectrum using the telluric lines in order to correct for the spectral drift. The calculated drift of the two spectral orders was small for the entire data set (<0.2 pixel), which agrees with previous work (Brogi et al. 2018). We then refined the wavelength solutions of the pipeline by matching the observed telluric lines to a theoretical telluric template calculated using the Molecfit tool (Smette et al. 2015). The precision of the refined wavelength solution is around 1 km s^{-1} , which was estimated by computing the standard deviation of the calibration residuals.

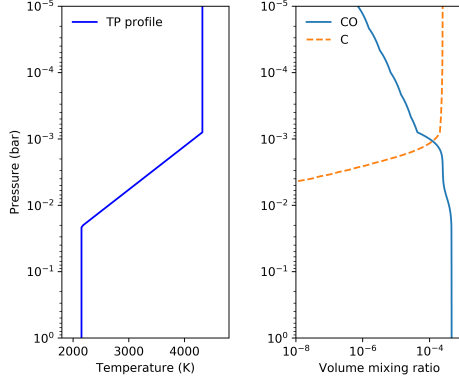
3. Methods

To search for CO signals in the dayside spectra, we applied the cross-correlation technique by cross-correlating the observed spectra with modeled spectral templates. We first performed the SYSREM algorithm (Tamuz et al. 2005; Birkby et al. 2013) to remove the telluric lines and stellar lines at the observer's rest frame. The observed spectra are dominated by telluric absorption lines because the A-type host stars have few spectral lines at these wavelengths. We masked the strong telluric lines by discarding the pixels with low signal-to-noise ratios (S/Ns). We used the S/N values provided by the pipeline and calculated the mean S/N for each pixel. In this way, we discarded 10%–20% of the pixels for each data set. We then applied the SYSREM algorithm to each data set in the same way as in Gibson et al. (2020) and Yan et al. (2022). We tested the SYSREM with iterations from 1 to 15. The final CO detection significance reached an asymptote after the initial few SYSREM iterations and we chose the number that yields the maximum detection significance (Fig. A.2). The telluric and stellar lines' removed spectra were then shifted to the stellar rest frame by correcting the observer's barycentric RV and the stellar systemic RV.

We modeled the thermal emission spectrum using the petitRADTRANS tool (Mollière et al. 2019). The CO opacities (up to 5000 K) were calculated using the line list from

Table 1. Observation logs.

Target	Date	Airmass change	Phase coverage	Exposure time	N_{spectra} (total/out-of-eclipse)
WASP-33b	2020-10-15	2.02–1.01–1.64	0.43–0.74	200 s	122/88
WASP-189b	2019-04-13	1.79–1.18–1.59	0.53–0.62	60 s	170/168
WASP-189b	2019-04-29	2.08–1.18–2.19	0.38–0.50	60 s	210/152


Fig. 2. Adopted T – P profile (left) and CO mixing ratio (right) for the calculation of the spectral template.

Li et al. (2015) with the ExoCross tool (Yurchenko et al. 2018). We adopted the temperature–pressure (T – P) profile that was retrieved from Fe I emission lines of WASP-189b (Yan et al. 2020). This T – P profile consists of a strong temperature inversion (Fig. 2). Then we calculated the CO mixing ratio using the easyCHEM code (Mollière et al. 2015) under the chemical equilibrium and solar abundance assumptions. According to the simulation (right panel in Fig. 2), CO is abundant at lower altitudes and it begins to be thermally dissociated in the temperature inversion layer. At very high altitudes, CO is largely dissociated into atomic carbon and oxygen. The planetary dayside spectra (F_p) of WASP-189b and WASP-33b were calculated using the parameters in Tables A.1 and A.2. The observed spectrum also contains the flux from the star; therefore, the model spectrum should be $F_s + F_p$, where we assumed the stellar flux F_s to be a blackbody spectrum. Since the observed spectrum has been normalized, we expressed the template spectrum as $1 + F_p/F_s$ (Fig. A.1). We then calculated a grid of the template spectrum by shifting the modeled spectrum from -500 km s^{-1} to $+500 \text{ km s}^{-1}$ in 1 km s^{-1} steps. The template spectrum was further normalized, convolved with a Gaussian function corresponding to the instrumental resolution (50 000), and sampled to the same wavelength grid of the observed spectra. Before the cross-correlation, we filtered both the observed and template spectra with a Gaussian high-pass filter of 15 points. In this way, we removed broadband spectral features in the spectra and, therefore, both the data and the template have values around one.

The cross-correlation procedure was performed by calculating the weighted cross-correlation function (CCF; Gibson et al. 2020) using the equation

$$\text{CCF} = \sum_i \frac{R_i m_i}{\sigma_i^2}, \quad (1)$$

where R_i is the observed spectrum, m_i is the template spectrum, and σ_i is the noise of the observed data at wavelength point i . We took the noise values provided by the instrumental

pipeline and considered error propagation during the data reduction. The weighted CCF method normally yields a better final detection significance because the low-S/N pixels (e.g., inside the telluric lines) and the low-flux spectra are assigned with low weights.

4. Results and discussions

4.1. Detection of the CO lines

The upper panels of Figs. 3 and 4 present the calculated CCFs of all the observed spectra in the stellar rest frame. Although the CCFs for position A and position B were calculated separately, we merged the A and B sequences in the figures. The trails of the CO emission signal are visible for both WASP-33b and WASP-189b in the CCF maps and their RVs are aligned with the planetary orbital motion (blue dashed lines). The lower panels of Figs. 3 and 4 show the CCFs in the planetary rest frame by correcting the planetary orbital RV.

To estimate the detection significance, we computed the K_p maps, where K_p is the semi-amplitude of the planetary orbital RV. The K_p maps were generated by combining all the out-of-eclipse CCFs in the planetary rest frame for different K_p values (ranging from 0 to 400 km s^{-1} in steps of 1 km s^{-1}). We further divided the map by its noise, which was estimated as the standard deviation of the CCFs with $|\Delta v|$ ranging from 100 to 200 km s^{-1} . In this way, we obtained the K_p maps in the unit of σ (detection significance) (Figs. 5 and 6). We defined the horizontal axis of the map as Δv , which means the RV deviation from the planetary rest frame (i.e., the remaining RV after the correction of the stellar systemic velocity and the planetary orbital motion RV).

For WASP-33b, we detected the CO signal with a S/N of 6.8 and the peak signal is located at $K_p = 229_{-12}^{+13} \text{ km s}^{-1}$ and $\Delta v = 2 \pm 10 \text{ km s}^{-1}$. This K_p is consistent with the K_p inferred from the Fe I emission lines ($225.0_{-3.5}^{+4.0} \text{ km s}^{-1}$) in Cont et al. (2021). For WASP-189b, the detected CO signal peaks at $K_p = 191_{-5}^{+6} \text{ km s}^{-1}$ and $\Delta v = 4.5_{-3.0}^{+2.2} \text{ km s}^{-1}$ with a S/N of 7.0. The detected K_p agrees well with the value from Fe I emission lines ($193.54_{-0.57}^{+0.54} \text{ km s}^{-1}$) in Yan et al. (2020). The K_p results of both planets are also consistent with the expected K_p values calculated using the orbital parameters (cf. Tables A.1 and A.2).

4.2. Signature of atmospheric circulation

The detected CO signal of WASP-189b has a Δv of $4.5_{-3.0}^{+2.2} \text{ km s}^{-1}$, which was measured as the difference between the RV of the detected signal and the stellar systemic RV (i.e., the detected CO signal has an absolute RV of $-20_{-3.0}^{+2.2} \text{ km s}^{-1}$, while the stellar systemic velocity is $-24.452 \pm 0.012 \text{ km s}^{-1}$). The previously detected Fe I emission lines also have a Δv of $4.3_{-0.26}^{+0.25} \text{ km s}^{-1}$ when using the same systemic velocity (Yan et al. 2020). Therefore,

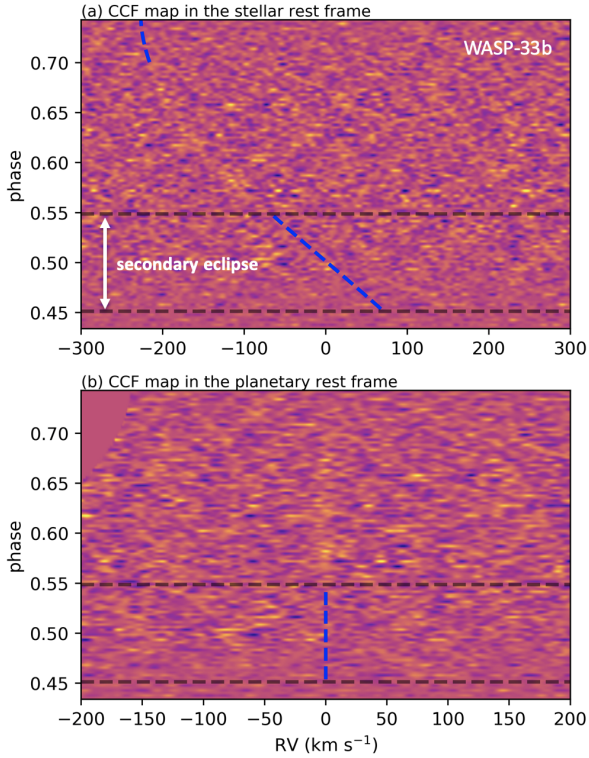


Fig. 3. CCF map for WASP-33b in the stellar rest frame (*upper panel*) and the planetary rest frame (*lower panel*). The blue dashed line indicates the RV of the planetary orbital motion.

both the CO and Fe I signals deviated from the systemic RV with a positive value, indicating that the dayside emission lines have a redshifted RV. Interestingly, recently detected transmission signals of WASP-189b (Stangret et al. 2022; Prinoth et al. 2022) show a blueshifted RV of several km s^{-1} . In particular, the transmission Fe I lines have a Δv of $-3.6 \pm 0.4 \text{ km s}^{-1}$. Therefore, the Δv values of both the transmission and emission lines are significantly different from zero and the signs of the transmission and emission Δv values are opposite. This can be explained consistently by assuming a dayside to nightside wind scenario (e.g., Tan & Komacek 2019). For transmission observations, this scenario results in a blueshifted RV (Fig. 7). On the other hand, for thermal emission observations around secondary eclipses, the hotspot region on the dayside has a blueshifted RV because of the strong upward motion while the rest part of the dayside has a redshifted RV (cf. Fig. 7 for such a fountain-like circulation pattern). Considering that the temperature of the hotspot is extremely high for WASP-189b, CO and Fe I shall be largely dissociated or ionized at the center of the hotspot. Therefore, the center of the hotspot contributes less to the observed CO and Fe I signals, while the rest of the dayside contributes more to the observed signals, leading to a redshifted RV of the emission lines.

For WASP-33b, such an RV signature of the dayside to nightside wind is not prominent. The detected Δv of the CO emission lines is $2 \pm 10 \text{ km s}^{-1}$ and previously detected Fe I emission lines have a Δv of $0.0 \pm 2.6 \text{ km s}^{-1}$ (Cont et al. 2021) and $0.2^{+2.1}_{-1.8} \text{ km s}^{-1}$ (Nugroho et al. 2020). The CO emission feature reported by van Sluijs et al. (2022) also has a Δv of $0.15^{+0.64}_{-0.65} \text{ km s}^{-1}$. Therefore, there is no indication of a strong dayside to nightside wind in WASP-33b from thermal emission observations. For transmission signals, only Ca II and hydrogen Blamer lines

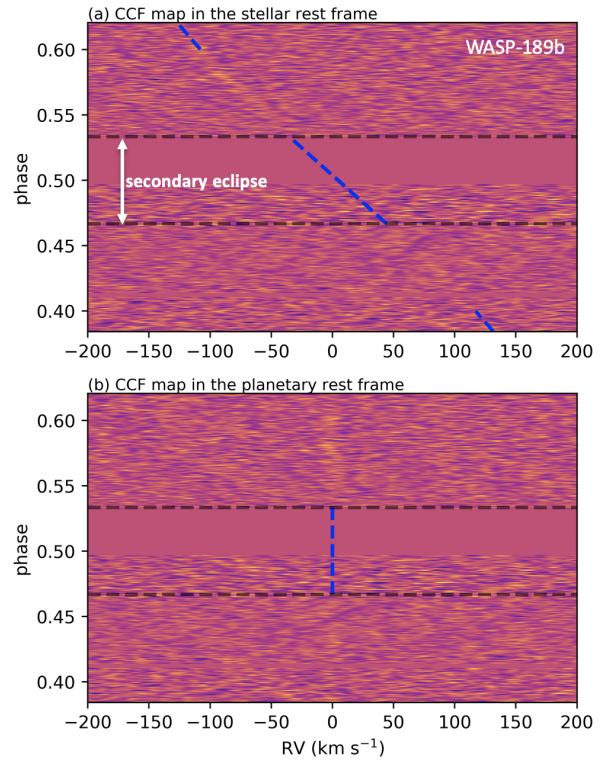


Fig. 4. Same as Fig. 3, but for WASP-189b.

have been detected in WASP-33b because the strong pulsation of the host star hinders the detection of atmospheric features. For the Blamer $\text{H}\alpha$ line, different Δv values and line depths have been reported in Yan et al. (2021; $1.2 \pm 0.9 \text{ km s}^{-1}$), Cauley et al. (2021; $-4.6 \pm 3.4 \text{ km s}^{-1}$), and Borsa et al. (2021c; $-8.2 \pm 1.4 \text{ km s}^{-1}$), which is likely due to the strong contamination of stellar pulsations. The stellar systemic velocities used in these three works are slightly different, but the Δv values are still different when assuming the same systemic velocity. Therefore, it is not conclusive on the existence of a dayside to nightside wind from the transmission observations.

According to the simulations of the atmospheric circulation in UHJs by Tan & Komacek (2019), the atmospheric circulation patterns (e.g., the equatorial superrotation jet and the dayside to nightside wind) depend on multiple parameters. In general, a longer rotation period, higher equilibrium temperature, and stronger frictional drag produce a stronger dayside to nightside wind with a weaker equatorial superrotation jet. The parameters of WASP-33b and WASP-189b are very similar (cf. Tables A.1 and A.2); however, the rotation period (assumed to be tidally locked) of WASP-33b is half of the period of WASP-189b, which might be the reason that we observed a strong dayside to nightside wind in WASP-189b but not in WASP-33b. Such a theoretical explanation also suggests that WASP-33b may have a strong superrotation jet.

Dayside to nightside wind has also been observed in other UHJs such as WASP-76b (Ehrenreich et al. 2020; Seidel et al. 2021) and HAT-P-70b (Bello-Arufe et al. 2022) with transmission spectroscopy. Further studies of more UHJs with different parameters using both transmission and emission high-resolution spectroscopy will enable a systematic understanding of the atmospheric circulation in UHJs.

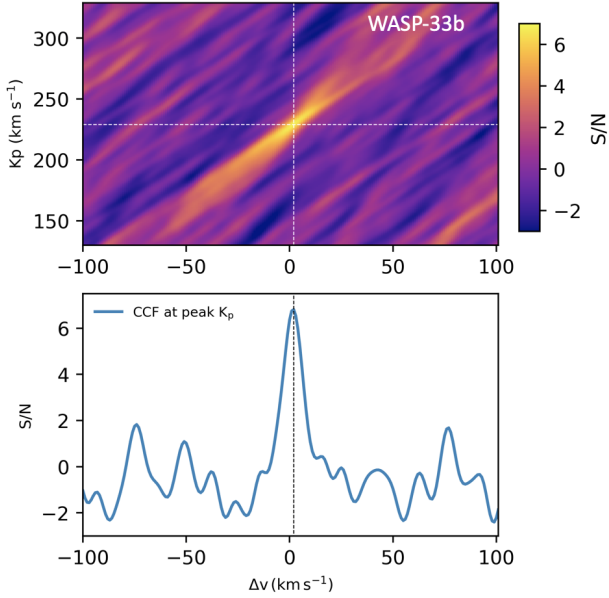


Fig. 5. K_p map and the CCF at the maximum S/N location for WASP-33b. The white dashed lines indicate the location of the maximum S/N.

5. Conclusions

We observed the dayside thermal emission spectra of WASP-33b and WASP-189b with the high-resolution near-infrared spectrograph GIANO-B. Using the cross-correlation technique, we detected the CO emission lines at S/Ns of 6.8 and 7.0 for WASP-33b and WASP-189b, respectively. The detected CO signals have a positive correlation with the spectral template that contains emission lines, meaning that the detected CO lines are in emission. This proves the existence of temperature inversion layers in their atmospheres, which agrees with the results from the previous detections of other emission lines (e.g., Fe I) in the two UHJs. This is the first detection of CO lines in emission as previous high-resolution detections of CO lines are all in absorption. The detected CO and Fe I emission lines in WASP-189b have a redshifted RV of several km s⁻¹, which is likely due to the strong dayside to nightside wind in its atmosphere. Such a redshifted RV signature has not been observed in the emission lines of WASP-33b, hinting at different circulation patterns in the atmospheres of the two planets.

The detection of CO emission lines is a new addition to the discovered chemical species (i.e., Fe I, Si I, OH, and TiO) in the dayside atmosphere of UHJs with high-resolution spectroscopy. We note that CO emission features were previously inferred from the *Spitzer* photometry in several UHJs; therefore, the high-resolution detections strengthen the low-resolution evidences of CO signals. Further retrieval work combining both high- and low-resolution CO signals will enable a comprehensive understanding of the atmospheric properties such as temperature structures and C/O ratios.

Unlike other molecules, the thermal dissociation temperature of CO is relatively high. Thus, CO emission is likely to be a common spectral feature of UHJs. In addition, CO is an ideal species for tracing the planetary formation history via the measurement of the C/O ratio and the carbon isotope ratio. Therefore, CO lines are a promising spectral window into the understanding of the formation and migration of UHJs.

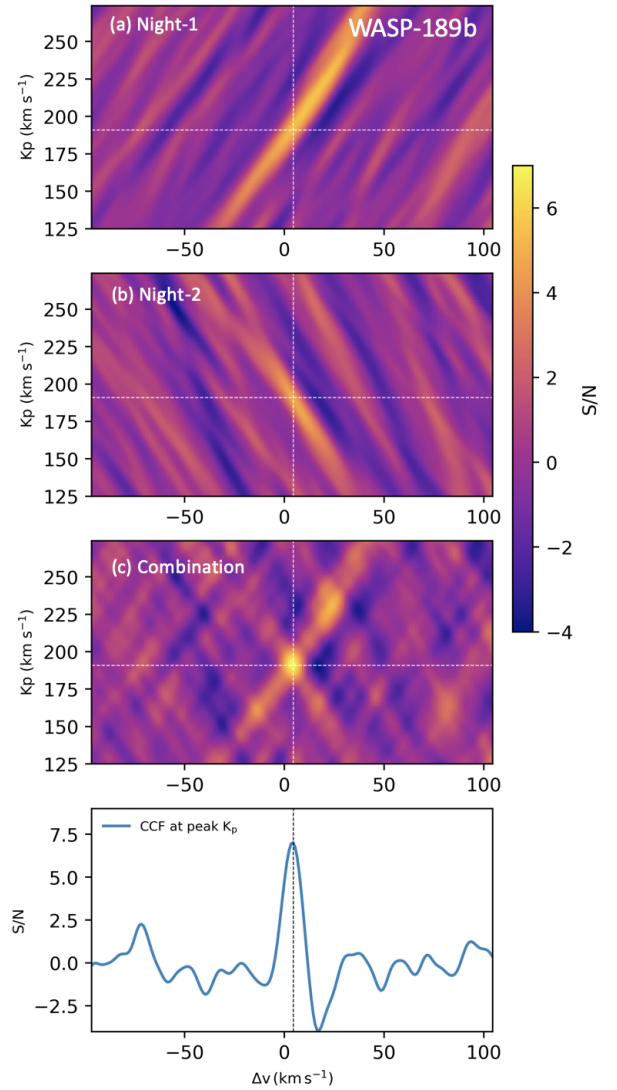


Fig. 6. Same as Fig. 5, but for WASP-189b.

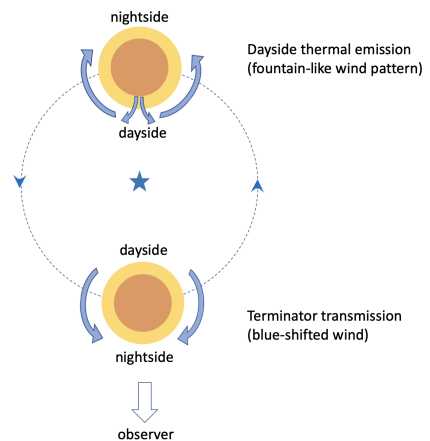


Fig. 7. Schematic of the dayside to nightside wind for transmission and thermal emission observations. The dashed line denotes the planetary orbit.

Acknowledgements. We thank the referee for the useful comments. F.Y. acknowledges the support of the DFG Research Unit FOR2544 “Blue Planets around Red Stars” (RE 1664/21-1). K.M. acknowledges the support of the Excellence Cluster ORIGINS which is funded by the Deutsche

Forschungsgemeinschaft (DFG, German Research Foundation) under Germany's Excellence Strategy – EXC-2094 – 390783311. P.M. acknowledges support from the European Research Council under the European Union's Horizon 2020 research and innovation program under grant agreement No. 832428-Origins. This work is based on observations made with the Italian Telescopio Nazionale Galileo (TNG) operated on the island of La Palma by the Fundación Galileo Galilei of the INAF (Istituto Nazionale di Astrofisica) at the Spanish Observatorio del Roque de los Muchachos of the Instituto de Astrofísica de Canarias.

References

- Anderson, D. R., Temple, L. Y., Nielsen, L. D., et al. 2018, *MNRAS*, submitted [arXiv:1809.04897]
- Bello-Arufe, A., Cabot, S. H. C., Mendonça, J. M., Buchhave, L. A., & Rathcke, A. D. 2022, *AJ*, 163, 96
- Ben-Yami, M., Madhusudhan, N., Cabot, S. H. C., et al. 2020, *ApJ*, 897, L5
- Birkby, J. L., de Kok, R. J., Brogi, M., et al. 2013, *MNRAS*, 436, L35
- Borsa, F., Allart, R., Casasayas-Barris, N., et al. 2021a, *A&A*, 645, A24
- Borsa, F., Fossati, L., Koskinen, T., Young, M. E., & Shulyak, D. 2021b, *Nat. Astron.*, 6, 226
- Borsa, F., Lanza, A. F., Raspantini, I., et al. 2021c, *A&A*, 653, A104
- Bourrier, V., Ehrenreich, D., Lendl, M., et al. 2020, *A&A*, 635, A205
- Brogi, M., Snellen, I. A. G., de Kok, R. J., et al. 2012, *Nature*, 486, 502
- Brogi, M., Giacobbe, P., Guilluy, G., et al. 2018, *A&A*, 615, A16
- Cabot, S. H. C., Madhusudhan, N., Welbanks, L., Piette, A., & Gandhi, S. 2020, *MNRAS*, 494, 363
- Cabot, S. H. C., Bello-Arufe, A., Mendonça, J. M., et al. 2021, *AJ*, 162, 218
- Casasayas-Barris, N., Pallé, E., Yan, F., et al. 2018, *A&A*, 616, A151
- Casasayas-Barris, N., Pallé, E., Yan, F., et al. 2019, *A&A*, 628, A9
- Casasayas-Barris, N., Orell-Miquel, J., Stangret, M., et al. 2021, *A&A*, 654, A163
- Caulley, P. W., Shkolnik, E. L., Ilyin, I., et al. 2019, *AJ*, 157, 69
- Caulley, P. W., Wang, J., Shkolnik, E. L., et al. 2021, *AJ*, 161, 152
- Claudi, R., Benatti, S., Carleo, I., et al. 2016, in *Ground-based and Airborne Instrumentation for Astronomy VI*, eds. C. J. Evans, L. Simard, & H. Takami, *SPIE Conf. Ser.*, 9908, 99081A
- Claudi, R., Benatti, S., Carleo, I., et al. 2017, *Eur. Phys. J. Plus*, 132, 364
- Cont, D., Yan, F., Reiners, A., et al. 2021, *A&A*, 651, A33
- Cont, D., Yan, F., Reiners, A., et al. 2022, *A&A*, 657, L2
- Deibert, E. K., de Mooij, E. J. W., Jayawardhana, R., et al. 2021, *ApJ*, 919, L15
- Deline, A., Hooton, M. J., Lendl, M., et al. 2022, *A&A*, 659, A74
- Ehrenreich, D., Lovis, C., Allart, R., et al. 2020, *Nature*, 580, 597
- Evans, T. M., Sing, D. K., Kataria, T., et al. 2017, *Nature*, 548, 58
- Fossati, L., Young, M. E., Shulyak, D., et al. 2021, *A&A*, 653, A52
- Fu, G., Sing, D. K., Lothringer, J. D., et al. 2022, *ApJ*, 925, L3
- Giacobbe, P., Brogi, M., Gandhi, S., et al. 2021, *Nature*, 592, 205
- Gibson, N. P., Merritt, S., Nugroho, S. K., et al. 2020, *MNRAS*, 493, 2215
- Guilluy, G., Sozzetti, A., Brogi, M., et al. 2019, *A&A*, 625, A107
- Helling, C., Gourbin, P., Woitke, P., & Parmentier, V. 2019, *A&A*, 626, A133
- Hoeijmakers, H. J., Ehrenreich, D., Heng, K., et al. 2018, *Nature*, 560, 453
- Hoeijmakers, H. J., Ehrenreich, D., Kitzmann, D., et al. 2019, *A&A*, 627, A165
- Hoeijmakers, H. J., Cabot, S. H. C., Zhao, L., et al. 2020a, *A&A*, 641, A120
- Hoeijmakers, H. J., Seidel, J. V., Pino, L., et al. 2020b, *A&A*, 641, A123
- Johnson, M. C., Cochran, W. D., Collier Cameron, A., & Bayliss, D. 2015, *ApJ*, 810, L23
- Kasper, D., Bean, J. L., Line, M. R., et al. 2021, *ApJ*, 921, L18
- Kesseli, A. Y., Snellen, I. A. G., Casasayas-Barris, N., Mollière, P., & Sánchez-López, A. 2022, *AJ*, 163, 107
- Kitzmann, D., Heng, K., Rimmer, P. B., et al. 2018, *ApJ*, 863, 183
- Konopacky, Q. M., Barman, T. S., Macintosh, B. A., & Marois, C. 2013, *Science*, 339, 1398
- Kreidberg, L., Line, M. R., Parmentier, V., et al. 2018, *AJ*, 156, 17
- Landman, R., Sánchez-López, A., Mollière, P., et al. 2021, *A&A*, 656, A119
- Lehmann, H., Guenther, E., Sebastian, D., et al. 2015, *A&A*, 578, L4
- Li, G., Gordon, I. E., Rothman, L. S., et al. 2015, *ApJS*, 216, 15
- Line, M. R., Brogi, M., Bean, J. L., et al. 2021, *Nature*, 598, 580
- Lothringer, J. D., Barman, T., & Koskinen, T. 2018, *ApJ*, 866, 27
- Maciejewski, G., Fernández, M., Aceituno, F., et al. 2018, *Acta Astron.*, 68, 371
- Mollière, P., van Boekel, R., Dullemond, C., Henning, T., & Mordasini, C. 2015, *ApJ*, 813, 47
- Mollière, P., Wardenier, J. P., van Boekel, R., et al. 2019, *A&A*, 627, A67
- Nugroho, S. K., Kawahara, H., Masuda, K., et al. 2017, *AJ*, 154, 221
- Nugroho, S. K., Gibson, N. P., de Mooij, E. J. W., et al. 2020, *ApJ*, 898, L31
- Nugroho, S. K., Kawahara, H., Gibson, N. P., et al. 2021, *ApJ*, 910, L9
- Pai Asnodkar, A., Wang, J., Eastman, J. D., et al. 2022, *AJ*, 163, 155
- Pino, L., Désert, J.-M., Brogi, M., et al. 2020, *ApJ*, 894, L27
- Prinoto, B., Hoeijmakers, H. J., Kitzmann, D., et al. 2022, *Nat. Astron.*, 6, 449
- Rainer, M., Harutyunyan, A., Carleo, I., et al. 2018, in *Ground-based and Airborne Instrumentation for Astronomy VII*, eds. C. J. Evans, L. Simard, & H. Takami, *SPIE Conf. Ser.*, 10702, 1070266
- Rainer, M., Borsa, F., Pino, L., et al. 2021, *A&A*, 649, A29
- Seidel, J. V., Ehrenreich, D., Wyttenbach, A., et al. 2019, *A&A*, 623, A166
- Seidel, J. V., Ehrenreich, D., Allart, R., et al. 2021, *A&A*, 653, A73
- Sheppard, K. B., Mandell, A. M., Tamburo, P., et al. 2017, *ApJ*, 850, L32
- Sing, D. K., Lavvas, P., Ballester, G. E., et al. 2019, *AJ*, 158, 91
- Smette, A., Sana, H., Noll, S., et al. 2015, *A&A*, 576, A77
- Snellen, I. A. G., de Kok, R. J., de Mooij, E. J. W., & Albrecht, S. 2010, *Nature*, 465, 1049
- Stangret, M., Casasayas-Barris, N., Pallé, E., et al. 2020, *A&A*, 638, A26
- Stangret, M., Casasayas-Barris, N., Pallé, E., et al. 2022, *A&A*, in press <https://doi.org/10.1051/0004-6361/202141799>
- Taberero, H. M., Zapatero Osorio, M. R., Allart, R., et al. 2021, *A&A*, 646, A158
- Tamuz, O., Mazeh, T., & Zucker, S. 2005, *MNRAS*, 356, 1466
- Tan, X., & Komacek, T. D. 2019, *ApJ*, 886, 26
- Turner, J. D., de Mooij, E. J. W., Jayawardhana, R., et al. 2020, *ApJ*, 888, L13
- van Sluijs, L., Birkby, J. L., Lothringer, J., et al. 2022, *MNRAS*, submitted [arXiv:2203.13234]
- Wyttenbach, A., Mollière, P., Ehrenreich, D., et al. 2020, *A&A*, 638, A87
- Yan, F., & Henning, T. 2018, *Nat. Astron.*, 2, 714
- Yan, F., Casasayas-Barris, N., Molaverdikhani, K., et al. 2019, *A&A*, 632, A69
- Yan, F., Pallé, E., Reiners, A., et al. 2020, *A&A*, 640, L5
- Yan, F., Wyttenbach, A., Casasayas-Barris, N., et al. 2021, *A&A*, 645, A22
- Yan, F., Reiners, A., Pallé, E., et al. 2022, *A&A*, 659, A7
- Yurchenko, S. N., Al-Refaie, A. F., & Tennyson, J. 2018, *A&A*, 614, A131
- Žák, J., Kabáth, P., Boffin, H. M. J., Ivanov, V. D., & Skarka, M. 2019, *AJ*, 158, 120

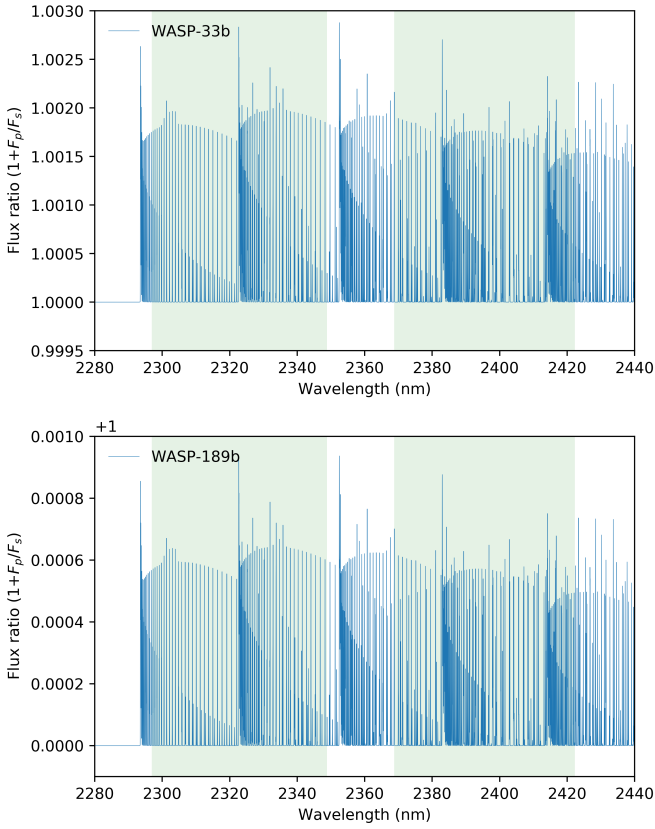
Appendix A: Additional tables and figures


Fig. A.1. Modeled thermal emission spectra of CO lines. The green shadow indicates the wavelength coverage of the two spectral orders of the GIANO-B spectrograph. The spectra have been normalized and convolved to the instrument resolution.

Table A.1. Parameters of the WASP-33b system.

Parameter	Symbol [unit]	Value
<i>Star</i>		
Effective temperature	T_{eff} [K]	7430 ± 100^a
Radius	R_{\star} [R_{\odot}]	$1.509^{+0.016}_{-0.027}^a$
Mass	M_{\star} [M_{\odot}]	$1.561^{+0.045}_{-0.079}^a$
Systemic velocity	v_{sys} [km s^{-1}]	-3.0 ± 0.4^b
<i>Planet</i>		
Radius	R_p [R_J]	$1.679^{+0.019}_{-0.030}^a$
Mass	M_p [M_J]	2.16 ± 0.20^a
Semi-major axis	a [R_{\star}]	3.69 ± 0.05^a
Orbital period	P [d]	$1.219870897(79)^c$
Transit epoch (BJD)	T_0 [d]	$2454163.22449(16)^c$
RV semi-amplitude	K_p [km s^{-1}]	231 ± 3^a
Equilibrium temperature	T_{eq} [K]	2710 ± 50
Orbital inclination	i [deg]	89.2^d

Notes. ^aLehmann et al. (2015). ^bNugroho et al. (2017). ^cMaciejewski et al. (2018). ^dPredicted value using orbital precession parameters in Johnson et al. (2015).

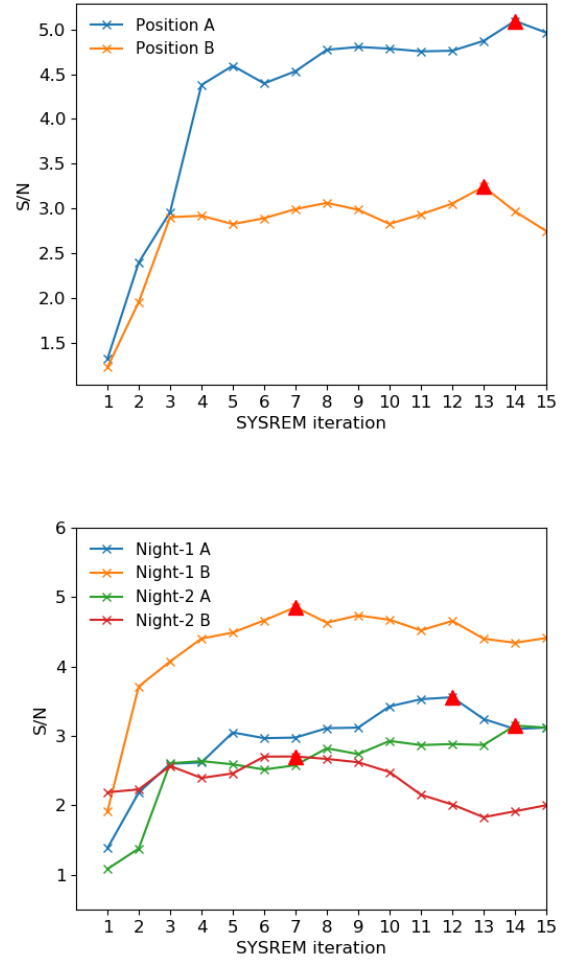


Fig. A.2. Detection significance with different SYSREM iteration numbers for WASP-33b (upper panel) and WASP-189b (lower panel). The red triangles denote the peak S/N values.

Table A.2. Parameters of the WASP-189b system.

Parameter	Symbol [unit]	Value
<i>Star</i>		
Effective temperature	T_{eff} [K]	8000 ± 80^a
Radius	R_{\star} [R_{\odot}]	2.365 ± 0.025^a
Mass	M_{\star} [M_{\odot}]	$2.031^{+0.098}_{-0.096}^a$
Systemic velocity	v_{sys} [km s^{-1}]	-24.452 ± 0.012^b
<i>Planet</i>		
Radius	R_p [R_J]	$1.600^{+0.017}_{-0.016}^a$
Mass	M_p [M_J]	2.13 ± 0.28^b
Semi-major axis	a [R_{\star}]	$4.587^{+0.037}_{-0.034}^a$
Orbital period	P [d]	$2.724035(23)^a$
Transit epoch (BJD)	T_0 [d]	$2459016.43487(6)^a$
RV semi-amplitude	K_p [km s^{-1}]	192 ± 3^a
Equilibrium temperature	T_{eq} [K]	$197^{+10}_{-11}^b$
Orbital inclination	i [deg]	$84.58^{+0.23}_{-0.22}^a$

Notes. ^aDeline et al. (2022). ^bAnderson et al. (2018).