



Universiteit
Leiden
The Netherlands

Reply to Sharifpour et al. light response measurement of the human SCN by 7T fMRI

Meijer, J.H.; Rover, M. de; de Torres Gutiérrez, P.; Swaab, D.F.; Osch, M.J.P. van; Schoonderwoerd, R.A.

Citation

Meijer, J. H., Rover, M. de, De Torres Gutiérrez, P., Swaab, D. F., Osch, M. J. P. van, & Schoonderwoerd, R. A. (2022). Reply to Sharifpour et al.: light response measurement of the human SCN by 7T fMRI. *Pnas*, 119(49). doi:10.1073/pnas.2215410119

Version: Publisher's Version

License: [Creative Commons CC BY-NC-ND 4.0 license](https://creativecommons.org/licenses/by-nc-nd/4.0/)

Downloaded from: <https://hdl.handle.net/1887/3515131>

Note: To cite this publication please use the final published version (if applicable).



Reply to Sharifpour et al.: Light response measurement of the human SCN by 7T fMRI

Johanna H. Meijer^{a,1} , Mischa de Rover^{a,b}, Pablo de Torres Gutiérrez^a, Dick F. Swaab^c , Matthias J. P. van Osch^d , and Robin A. Schoonderwoerd^e

We appreciate that Sharifpour et al. (1) took the effort to start a scientific discussion and hope we can clarify issues. In their paper, it is argued that light response measurements of the SCN, as published by us (2), could have mainly originated from nuclei surrounding the SCN. The main reasoning was twofold: 1) The volume of interest (VOI, also referred to as 'mask') contained light-responsive hypothalamic areas that overruled the light response of the SCN, explaining the observed inhibition. 2) The SCN light response should have been an excitation, not an inhibition.

To start with the latter, the light response of suprachiasmatic nuclei (SCN) neurons is present in a subpopulation of all SCN neurons. In nocturnal rodents, the predominant response is an excitation while only few SCN cells respond with inhibition to light (Fig. 1). These responses appear to be driven by glutamate and Gamma-aminobutyric acid (GABA), respectively (3, 4). In contrast, the SCN of diurnal (day active) rodents exhibits relatively less excitations and more inhibitions, as shown by single-unit recordings (Fig. 1). Hence, the expectation of finding an excitatory response in the human SCN is not self-evident and we started without expectation in either direction. Of note, the BOLD response is an 'ensemble tissue level response' of the SCN as opposed to the single-unit recordings.

The choice for the anatomical location, defining our "Volume of interest", was correct according to Sharifpour et al. but large. Indeed, the VOI was 'large', compared to the SCN, and recording a light response from such a small nucleus was a challenge for which we had to adopt dedicated techniques (2). Most readily explainable is that we grouped

the light response of all subjects after aligning them on the basis of the hypothalamic contours of each subject, rather than by routine grouping them on the basis of brain contour (Fig. 2). By doing so, we could perform a robust statistical analysis of the SCN, diluting the contribution to the response of possible adjacent areas included in the VOI (see Fig. 1, 3 E-I, Schoonderwoerd et al. (2)).

To what extent are areas immediately surrounding the SCN light responsive? Single-unit recordings in the hamster revealed that from a total of 50 individual SCN neurons, 28% was light responsive, while from 169 individual neurons outside the SCN, it was only 3% (5). Anatomical tracing studies in humans show that the SCN receives dense retinal input, while outside the SCN only few projections are found (8). Of note, the area of the SCN that was targeted by us was localized 1 mm more rostral than the area indicated by Sharifpour et al. resulting in fewer adjacent gray matter areas contributing to the response. On the basis of current studies, we strongly believe that the conclusion from our paper was the most likely one. We are confident that our recommendation to apply all colors of light (daylight) during the day and to refrain from all colors during the night is justified by the data.

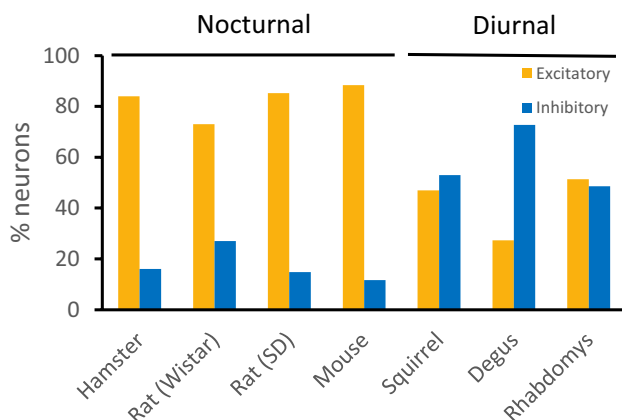


Fig. 1. Adapted from Schoonderwoerd et al. (3) Proportion of light-excited and light-inhibited cells in the SCN of nocturnal and diurnal species. Hamster and rat (Wistar) are from Meijer et al. (5); rat (Sprague-Dawley) and degus data are from Jiao et al. (6); squirrel data are from Meijer et al. (7); and mouse and Rhabdomys data are from Schoonderwoerd et al. (3). Hamsters, rats, and mice are nocturnal species. Squirrels, degus, and Rhabdomys are diurnal species.

Author affiliations: ^aDepartment of Cell and Chemical Biology, Leiden University Medical Center, 2300RC Leiden, The Netherlands; ^bDepartment of Clinical Psychology, Institute of Psychology, Leiden University, 2333 AK, Leiden, The Netherlands; ^cDepartment of Neuropsychiatric Disorders, Netherlands Institute for Neuroscience, Royal Netherlands Academy of Arts and Sciences, 1105 BA, Amsterdam, The Netherlands; ^dDepartment of Radiology, C. J. Gorter Center for High Field MRI, Leiden University Medical Center, 2333 ZA, Leiden, The Netherlands; and ^eValcon, 3541 CS, Utrecht, The Netherlands. The authors declare no competing interest.

Author contributions: J.H.M., M.d.R., P.d.T.G., D.F.S., M.J.P.v.O., and R.A.S. wrote the paper. Copyright © 2022 the Author(s). Published by PNAS. This article is distributed under [Creative Commons Attribution-NonCommercial-NoDerivatives License 4.0 \(CC BY-NC-ND\)](https://creativecommons.org/licenses/by-nc-nd/4.0/).

The authors declare no competing interest.

¹To whom correspondence may be addressed. Email: j.h.meijer@lumc.nl.

Published November 29, 2022.

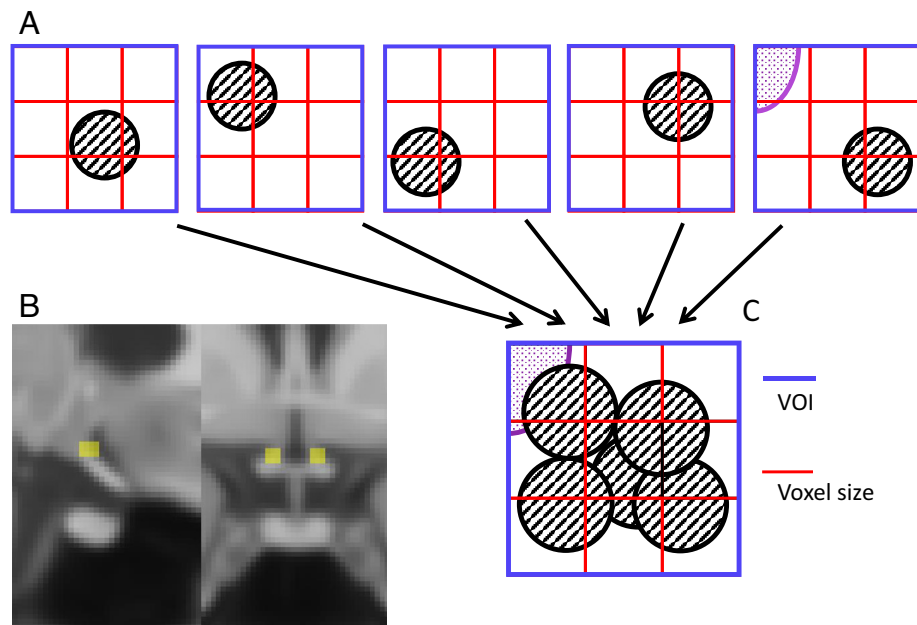


Fig. 2. Schematic drawing of the SCN (black-shaded circle) location (coronal view) within the VOI (A), based on the anatomical location of the yellow VOI containing the SCN (B) as shown in Schoonderwoerd *et al.* (2). The schematic drawing shows the between-subject variation in the location of the SCN. Five individual VOIs are schematically drawn in A, and in one of those, a small piece of a neighboring hypothalamic nucleus was included for illustration purposes (purple-shaded area). The contribution of this area, if present, will become diluted in the VOI. (C) Illustrates the result of grouping the light responses in the VOIs. The VOI size is 3×3 mm (in-plane). Our results were registered to the MNI152 template with a $1 \times 1 \times 1$ mm resolution; therefore, the voxel-size in this schematic drawing is 1×1 mm. The estimated size of the SCN is 1.1×1.1 mm.

1. R. Sharifpour, Pitfalls in recording BOLD signal responses to light in small hypothalamic nuclei using Ultra-high-field 7 Tesla MRI. *Proc. Natl. Acad. Sci. U.S.A.* in press.
2. R. A. Schoonderwoerd *et al.*, The photobiology of the human circadian clock. *Proc. Natl. Acad. Sci. U.S.A.* **119**, e2118803119 (2022).
3. R. A. Schoonderwoerd *et al.*, Inhibitory responses to retinohypothalamic tract stimulation in the circadian clock of the diurnal rodent *Rhabdomys pumilio*. *FASEB J.* **36**, e22415 (2022).
4. T. Sonoda *et al.*, A noncanonical inhibitory circuit dampens behavioral sensitivity to light. *Science* **368**, 527–531 (2020).
5. J. H. Meijer, G. A. Groos, B. Rusak, Luminance coding in a circadian pacemaker: The suprachiasmatic nucleus of the rat and the hamster. *Brain Res.* **382**, 109–118 (1986).
6. Y. Y. Jiao, T. M. Lee, B. Rusak, Photic responses of suprachiasmatic area neurons in diurnal degus (*Octodon degus*) and nocturnal rats (*Rattus norvegicus*). *Brain Res.* **817**, 93–103 (1999).
7. J. H. Meijer, B. Rusak, M. E. Harrington, Photically responsive neurons in the hypothalamus of a diurnal ground squirrel. *Brain Res.* **501**, 315–323 (1989).
8. J. Dai, J. Van der Vliet, D. F. Swaab, R. M. Buijs, Human retinohypothalamic tract as revealed by in vitro postmortem tracing. *J. Comp. Neurol.* **397**, 357–370 (1998).