



**Universiteit  
Leiden**  
The Netherlands

## **Airway epithelial responses to rhinovirus, coronavirus and cigarette smoke**

Wang, Y.

### **Citation**

Wang, Y. (2023, January 26). *Airway epithelial responses to rhinovirus, coronavirus and cigarette smoke*. Retrieved from <https://hdl.handle.net/1887/3512925>

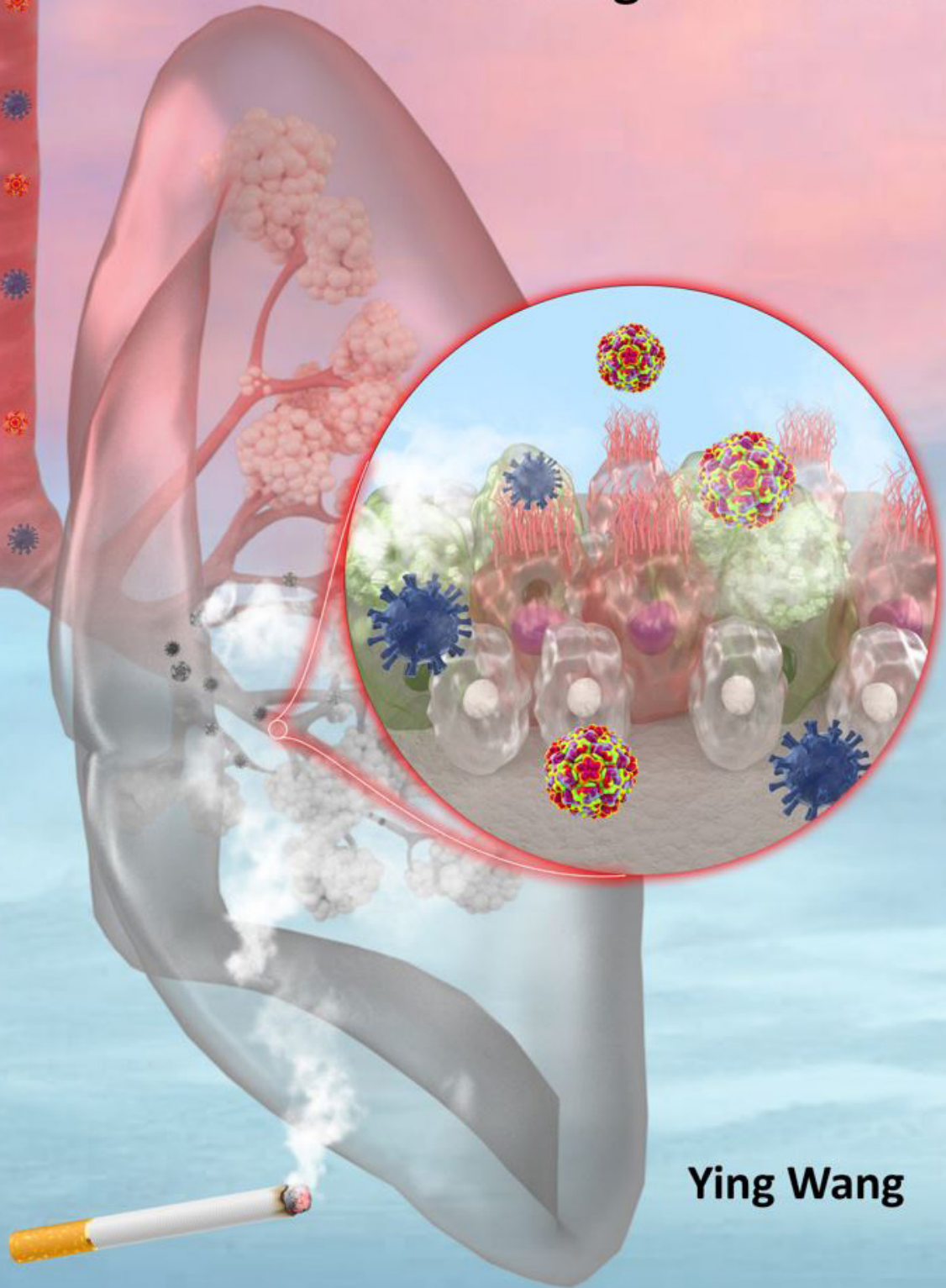
Version: Publisher's Version

License: [Licence agreement concerning inclusion of doctoral thesis in the Institutional Repository of the University of Leiden](#)

Downloaded from: <https://hdl.handle.net/1887/3512925>

**Note:** To cite this publication please use the final published version (if applicable).

# Airway epithelial responses to rhinovirus, coronavirus and cigarette smoke



Ying Wang

Airway epithelial responses to rhinovirus, coronavirus and cigarette smoke Ying Wang

