



Universiteit
Leiden
The Netherlands

Quality of surgery and outcome in localized gastrointestinal stromal tumors treated within an international intergroup randomized clinical trial of adjuvant imatinib

Gronchi, A.; Bonvalot, S.; Velasco, A.P.; Kotasek, D.; Rutkowski, P.; Hohenberger, P.; ... ; Casali, P.G.

Citation

Gronchi, A., Bonvalot, S., Velasco, A. P., Kotasek, D., Rutkowski, P., Hohenberger, P., ... Casali, P. G. (2020). Quality of surgery and outcome in localized gastrointestinal stromal tumors treated within an international intergroup randomized clinical trial of adjuvant imatinib. *Jama Surgery*, 155(6). doi:10.1001/jamasurg.2020.0397

Version: Publisher's Version

License: [Licensed under Article 25fa Copyright Act/Law \(Amendment Taverne\)](#)

Downloaded from: <https://hdl.handle.net/1887/3184652>

Note: To cite this publication please use the final published version (if applicable).

Quality of Surgery and Outcome in Localized Gastrointestinal Stromal Tumors Treated Within an International Intergroup Randomized Clinical Trial of Adjuvant Imatinib

Alessandro Gronchi, MD; Sylvie Bonvalot, MD, PhD; Andres Poveda Velasco, MD; Dusan Kotasek, MD; Piotr Rutkowski, MD; Peter Hohenberger, MD; Elena Fumagalli, MD; Ian R. Judson, MD, PhD; Antoine Italiano, MD, PhD; Hans J. Gelderblom, MD; Frits van Coevorden, MD; Nicolas Penel, MD; Hans-Georg Kopp, MD; Florence Duffaud, MD; David Goldstein, MD; Javier Martin Broto, MD; Eva Wardelmann, MD; Sandrine Marreaud, MD; Mark Smithers, MD; Axel Le Cesne, MD; Facundo Zaffaroni, MD; Saskia Litière, MSc; Jean-Yves Blay, MD, PhD; Paolo G. Casali, MD

[+ Invited Commentary](#)

[+ Supplemental content](#)

IMPORTANCE The association between quality of surgery and overall survival in patients affected by localized gastrointestinal stromal tumors (GIST) is not completely understood.

OBJECTIVE To assess the risk of death with and without imatinib according to microscopic margins status (RO/R1) using data from a randomized study on adjuvant imatinib.

DESIGN, SETTING, AND PARTICIPANTS This is a post hoc observational study on patients included in the randomized, open-label, phase III trial, performed between December 2004 and October 2008. Median follow-up was 9.1 years (IQR, 8-10 years). The study was performed at 112 hospitals in 12 countries. Inclusion criteria were diagnosis of primary GIST, with intermediate or high risk of relapse; no evidence of residual disease after surgery; older than 18 years; and no prior malignancies or concurrent severe/uncontrolled medical conditions. Data were analyzed between July 17, 2017, and March 1, 2020.

INTERVENTIONS Patients were randomized after surgery to either receive imatinib (400 mg/d) for 2 years or no adjuvant treatment. Randomization was stratified by center, risk category (high vs intermediate), tumor site (gastric vs other), and quality of surgery (RO vs R1). Tumor rupture was included in the R1 category but also analyzed separately.

MAIN OUTCOMES AND MEASURES Primary end point of this substudy was overall survival (OS), estimated using Kaplan-Meier method and compared between RO/R1 using Cox models adjusted for treatment and stratification factors.

RESULTS A total of 908 patients were included; 51.4% were men (465) and 48.6% were women (440), and the median age was 59 years (range, 18-89 years). One hundred sixty-two (17.8%) had an R1 resection, and 97 of 162 (59.9%) had tumor rupture. There was a significant difference in OS for patients undergoing an R1 vs RO resection, overall (hazard ratio [HR], 2.05; 95% CI, 1.45-2.89) and by treatment arm (HR, 2.65; 95% CI, 1.37-3.75 with adjuvant imatinib and HR, 1.86; 95% CI, 1.16-2.99 without adjuvant imatinib). When tumor rupture was excluded, this difference in OS between R1 and RO resections disappeared (HR, 1.05; 95% CI, 0.54-2.01).

CONCLUSIONS AND RELEVANCE The difference in OS by quality of surgery with or without imatinib was associated with the presence of tumor rupture. When the latter was excluded, the presence of R1 margins was not associated with worse OS.

TRIAL REGISTRATION ClinicalTrials.gov Identifier: [NCT00103168](https://clinicaltrials.gov/ct2/show/study/NCT00103168)

Author Affiliations: Author affiliations are listed at the end of this article.

Corresponding Author: Alessandro Gronchi, MD, Department of Surgery, Fondazione IRCCS Istituto Nazionale dei Tumori, 20133 Milan, Italy (alessandro.gronchi@istitutotumori.mi.it).

JAMA Surg. 2020;155(6):e200397. doi:10.1001/jamasurg.2020.0397
Published online April 1, 2020.

Gastrointestinal stromal tumors (GISTs) are rare malignancies of the GI tract, predominantly occurring in the stomach and small bowel. Surgery is the cornerstone of therapy for localized tumors. A macroscopic complete resection with negative margins (RO) is the recommended goal.^{1,2} However, the ultimate significance of a positive microscopic margins resection (R1) for GIST is controversial: in several studies it was found to be a significant prognostic indicator of overall outcomes,³⁻⁵ while others failed to find any effect on relapse-free survival (RFS) or overall survival (OS).⁶⁻⁸ Actually, the outcome of patients with R1 resections remains unclear. Existing series are generally composed of retrospective institutional analyses from relatively small numbers of patients with wide-ranging tumor heterogeneity. The only evaluation of this question in a prospective series of patients, included in 2 consecutive studies on adjuvant imatinib,⁹ did not show an effect of R1 resections on RFS, regardless of the use of adjuvant imatinib. Of note, those 2 studies included tumor rupture in the definition of R1 resection, which is known to entail per se a dismal prognosis.^{10,11} This post hoc substudy is based on the data collected in the European Organization for Research and Treatment in Cancer (EORTC) 62024 trial, which is, to our knowledge, the largest prospective randomized trial on adjuvant imatinib in patients undergoing a resection of primary localized GIST.^{12,13} The aim of this study was to assess the association of an R1 resection with OS and RFS with and without adjuvant imatinib therapy and separating tumor rupture from the R1 group.

Methods

This was an observational cohort substudy on patients from a randomized, open-label, multicenter phase III trial performed at 112 hospitals in 12 countries (Australia, Belgium, Denmark, France, Germany, Italy, New Zealand, Poland, Singapore, Spain, the Netherlands, and the United Kingdom).^{12,13} Inclusion criteria of the randomized clinical trial included a histologically proven diagnosis of primary resected GIST, with positive immunostaining for tyrosine-protein kinase KIT (cluster of differentiation [CD] 117), with an intermediate or high risk of relapse on the surgical specimen according to the 2002 National Institutes of Health Consensus Diagnosis of GIST¹⁴ as high risk (tumor size >10 cm; or mitotic rate >10/50 HPF; or tumor size >5 cm and mitotic rate >5/50 HPF) or intermediate risk (tumor size ≤5 cm and mitotic rate 6/50-10/50 HPF; or tumor size >5-10 cm and mitotic rate ≤5/50HPF). Surgery had to be performed from 2 weeks to 3 months before randomization, and surgical margins had to be either RO or R1. Eligible patients were randomized (using minimization) after surgery to receive either imatinib (400 mg/d) for 2 years or no adjuvant treatment (the standard arm). Randomization was stratified by center, risk category (high vs intermediate), tumor site (gastric vs other), and quality of surgical margins (RO vs R1). Neither patients nor investigators were masked to treatment allocation.

The trial procedures were already reported in detail.^{12,13} The study was approved by the ethics committee of each par-

Key Points

Question What is the association between quality of surgery and overall survival in patients affected by localized intermediate/high-risk gastrointestinal stromal tumors?

Findings In this cohort substudy using data from a randomized study on adjuvant imatinib, the microscopic margins status was not associated with a higher risk of recurrence or death regardless of the study arm.

Meaning In the subgroup of patients with no tumor rupture, microscopic margin status should not be considered per se an indication for adjuvant therapy.

ticipating institution. Written informed consent was obtained from all study participants. The primary end point of the main study was imatinib monotherapy failure-free survival (FFS),^{12,13} determined from the date of randomization to the date of start of a new systemic treatment, a combination of imatinib with a new systemic treatment, or death from any cause, whichever occurred first. Secondary end points were relapse-free survival, overall survival, and incidence of adverse events. Results of the interim and final analysis have been reported elsewhere.^{12,13}

Surgery was documented using surgical records and local pathology report. Furthermore, a surgical questionnaire on details of the operation (extent of resection, concordance of preoperative and intraoperative findings, complications, completeness of resection, and others) had to be completed. Surgeons from 5 countries, covering 8 languages, reviewed the full set of data that was available from 697 patients (76.7%).¹⁵ In the protocol, tumor rupture occurring before or during intervention was included in the R1 category, but also analyzed separately. However, a clear definition of what to code as tumor rupture was lacking in the protocol. For the 697 operations reviewed centrally, tumor rupture was defined as any tumor spillage or fracture, laceration of the tumor capsule with or without macroscopic spillage, piecemeal resection, and incisional biopsy occurring either before or at the time of the operation. Patient, tumor, operative characteristics, factors associated with R1 resections, tumor rupture, and disease status were analyzed.

We did not follow the STROBE criteria because these apply to prospectively collected data in the context of an observational (nonrandomized) study. This is a retrospective analysis on an existing data set. Primary and secondary end points of this substudy were OS and RFS, respectively, in the different subgroups of RO or R1 patients treated or not with adjuvant imatinib. These time-to-event end points were estimated using the Kaplan-Meier method¹⁶ and compared between the RO/R1 using Cox models¹⁷ adjusted for treatment and the study stratification factors (risk category and tumor site). The substudy was performed on the original data of the 908 randomized patients and repeated on the 697 patients for whom the complete set of data was available for central review. This analysis was assessed using a .05 significance level (2-sided test).

Table 1. Patient/Disease Characteristics by Quality of Surgical Margins According to Investigators' Assessment

Characteristic	No. (%)		
	Quality of surgical margins: surgery		
	R0 (n = 743)	R1 (n = 162)	Total (N = 905)
Age at randomization, y			
≤20	4 (0.5)	0	4 (0.4)
20-40	68 (9.2)	13 (8.0)	81 (9.0)
40-60	335 (45.1)	74 (45.7)	409 (45.2)
>60	336 (45.2)	75 (46.3)	411 (45.4)
Sex			
Male	375 (50.5)	90 (55.6)	465 (51.4)
Female	368 (49.5)	72 (44.4)	440 (48.6)
Perioperative tumor rupture			
No	NA	65 (40.1)	808 (89.3)
Yes	NA	97 (59.9)	97 (10.7)
Tumor site			
Small bowel	223 (30.0)	64 (39.5)	287 (31.7)
Gastric	444 (59.8)	58 (35.8)	502 (55.5)
Other	76 (10.2)	40 (24.7)	116 (12.8)
Risk category, new definition, local			
Low/intermediate risk	390 (52.5)	32 (19.8)	422 (46.6)
High risk	353 (47.5)	33 (20.4)	386 (42.7)
Tumor rupture			
Low/intermediate risk	0	28 (17.3)	28 (3.1)
High risk	0	69 (42.6)	69 (7.6)
Tumor size, cm			
<2	3 (0.4)	0	3 (0.3)
2-5	84 (11.3)	11 (6.8)	95 (10.5)
5-10	482 (64.9)	88 (54.3)	570 (63.0)
≥10	174 (23.4)	63 (38.9)	237 (26.2)

Abbreviation: NA, not applicable.

Table 2. Quality of Surgical Margins by Treatment Arm

Quality of surgical margins	No. (%)		
	Treatment arm		
	Observation	Imatinib adjuvant	Total
Surgery			
R0	454	454	908
R1	368 (81.1)	375 (82.6)	743 (81.8)
R2	85 (18.7)	77 (17.0)	162 (17.8)
Unknown	1 (0.2)	1 (0.2)	2 (0.2)
Surgery review			
R0	0	1 (0.2)	1 (0.1)
R1	354	343	697
R2	265 (75.1)	262 (76.4)	527 (75.7)
Unknown	83 (23.5)	80 (23.3)	163 (23.4)
R2	5 (1.4)	1 (0.3)	6 (0.9)

The randomized trial was registered with ClinicalTrials.gov identifier [NCT00103168](https://clinicaltrials.gov/ct2/show/study/NCT00103168). This report is based on all data available on July 12, 2017.

Results

In total, 908 patients were randomized between December 8, 2004, and October 20, 2008. There were 454 in the adjuvant imatinib arm and 454 in the observation arm. Median

follow-up was 9.1 years (IQR, 8-10 years). In all, 162 patients (17.8%) had an R1 resection, and 97 of these patients (59.9%) had a tumor rupture (Tables 1 and 2).

Five-year OS rates were 93.9% (95% CI, 91.8-95.4) for patients with R0 resection vs 84.4% (95% CI, 77.7-89.3) for patients with R1 resection; 10-year OS rates were 82.6% (95% CI, 79.2-85.5) and 64.4% (95% CI, 55.1-72.3), respectively. There was a significant difference in OS for patients undergoing an R1 vs R0 resection of GIST, both overall (HR, 2.05; 95% CI, 1.45-2.89; $P < .001$) and by treatment arm (HR, 2.65; 95% CI,

Figure 1. Overall Survival (OS) by Treatment and Quality of Surgical Margins, Overall (A) and Without Tumor Rupture (B)

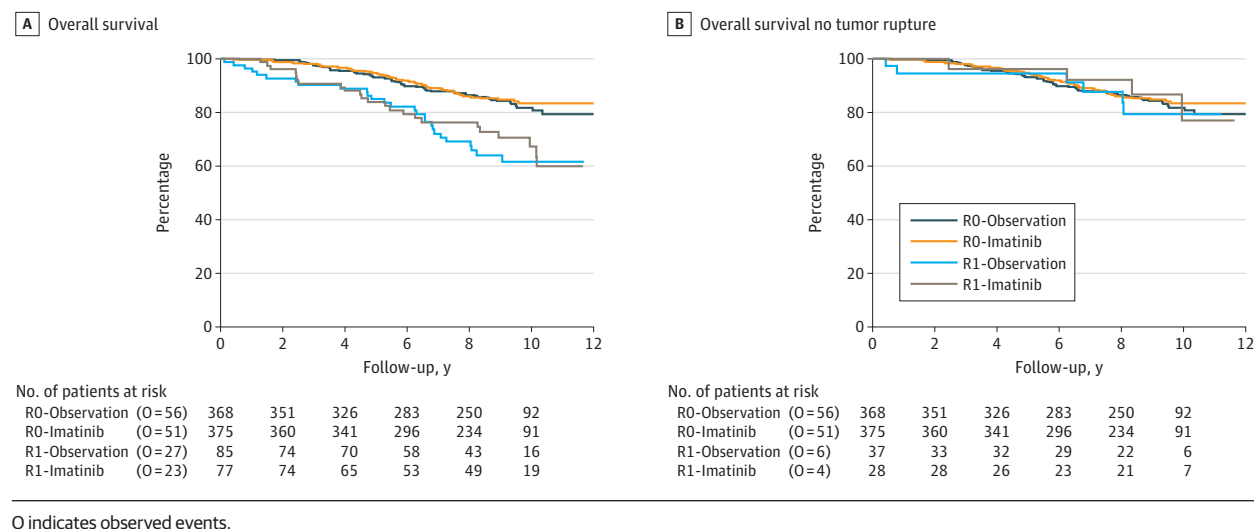
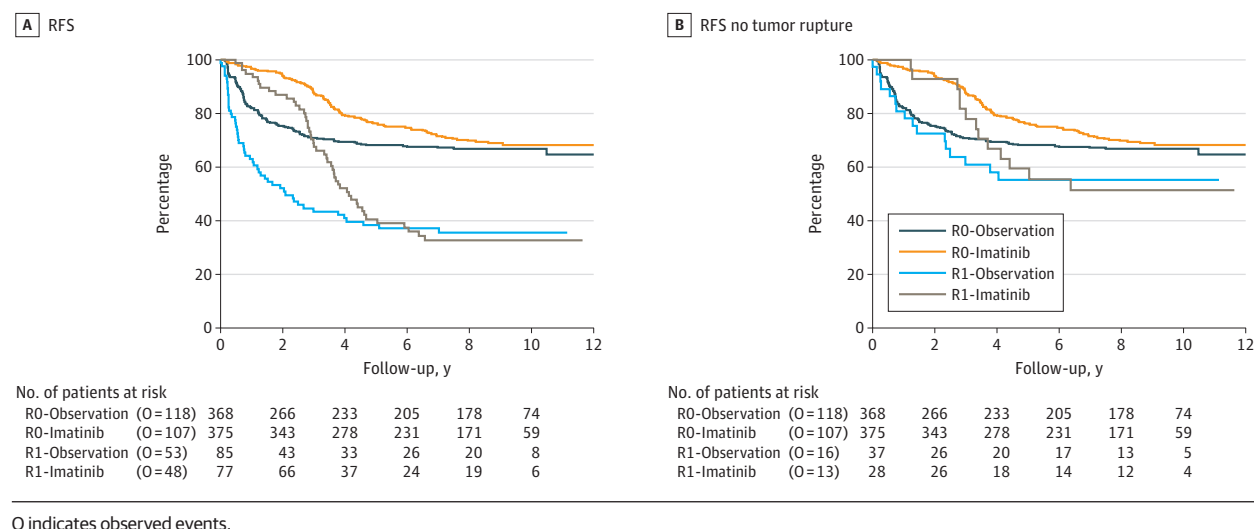


Figure 2. Relapse-Free Survival (RFS) by Treatment and Quality of Surgical Margins, Overall (A) and Without Tumor Rupture (B)



1.37-3.75; with adjuvant imatinib and HR, 1.86; 95% CI, 1.16-2.99; without adjuvant imatinib; **Figure 1A**). However, when patients with tumor rupture were excluded, this difference in OS between R1 and R0 resections disappeared (HR, 1.05; 95% CI, 0.54-2.01; **Figure 1B**). Subgroup analyses of the effect of R1 vs R0 resection by tumor location are shown in eFigure 1 in the [Supplement](#).

A significant difference in RFS was also observed for patients undergoing an R1 vs R0 resection of GIST, both overall (HR, 1.98; 95% CI, 1.55-2.53; $P < .001$) and by treatment arm (HR, 2.32; 95% CI, 1.64-3.30; with adjuvant imatinib and HR, 1.81; 95% CI, 1.29-2.54; without adjuvant imatinib; **Figure 2A**). When patients with tumor rupture were excluded, this difference in RFS between R1 and R0 resections disappeared (HR, 1.35; 95% CI, 0.91-1.99; **Figure 2B**).

Finally, we adjusted the RFS and OS analyses for tumor size, location, and risk in addition to treatment in the patient popu-

lation without tumor rupture, and no difference was observed between R0 and R1 resections (eTables 1 and 2 in the [Supplement](#)).

Central Surgery Review Results (697 Patients)

According to the surgery review, 163 of 697 patients (23.4%) had an R1 resection (Table 2); 103 of these patients (63.2%) had tumor rupture (eTable 3 in the [Supplement](#)). Five-year OS rates were 94.0% (95% CI, 91.5-95.8) for patients with R0 resection vs 86.7% (95% CI, 80.3-91.1) for patients with R1 resection; 10-year OS rates were 84.0% (95% CI, 80.0-87.3) and 64.3% (95% CI, 55.2-72.1), respectively. The OS of patients undergoing an R1 was significantly worse than that of patients with R0 resection of GIST, both overall (HR, 2.18; 95% CI, 1.50-3.16; $P < .001$) and by treatment arm (HR, 2.99; 95% CI, 1.74-5.14 with adjuvant imatinib and HR, 1.66; 95% CI, 0.99-2.77 without adjuvant imatinib; eFigure 2A in the [Supplement](#)).

Again, the risk of death in R1 patients was largely associated with the presence of tumor rupture. When patients with tumor rupture were excluded, this difference in OS between R1 and R0 resections disappeared (HR, 0.88; 95% CI, 0.42-1.84; eFigure 2B in the Supplement). Subgroup analyses of the effect of R1 vs R0 resection by tumor location are shown in eFigure 3 in the Supplement.

There was also a significant difference in RFS for patients undergoing an R1 vs R0 resection of GIST, both overall (HR, 2.19; 95% CI, 1.68-2.86; $P < .001$) and by treatment arm (HR, 2.67; 95% CI, 1.81-3.92; with adjuvant imatinib and HR, 1.97; 95% CI, 1.36-2.85; without adjuvant imatinib; eFigure 4 in the Supplement).

Discussion

In this post hoc analysis of 908 patients treated with resection of localized intermediate-risk or high-risk GIST, randomly assigned to receive 2 years of adjuvant imatinib or observation, tumor rupture was associated with a worse prognosis independently of the study arm, while status of surgical margins without tumor rupture was not.

Limitations

One major limitation of our study is that data on how many surgeons were involved and the median number of operations per surgeon are lacking. The study was performed at 112 sites, and surgery was not standardized in the protocol of the randomized clinical trial and could also have been performed at another center, provided the surgical report was available. Therefore, we cannot exclude the presence of institution-level and/or surgeon-level differences that might have influenced at least in part our results.

Strengths

Of note in the 697 patients available for central review, inconsistencies of surgical reporting were found in 18% of patients.¹⁵ However, the analysis performed on the centrally reviewed subgroup did not differ from the one performed on the whole series, taking into account the local investigator assessment.

Indeed, a clear definition of which conditions should have been coded as tumor rupture was not emphasized in the protocol. In 2018, a detailed classification was proposed by the Oslo Sarcoma Group¹⁸⁻²¹: rupture was defined as tumor spillage or fracture, piecemeal resection, incisional biopsy, gastrointestinal perforation to the abdominal cavity, blood-tinged ascites, or microscopic transperitoneal infiltration into an adjacent structure. In contrast, minor defects of tumor integrity (such as those caused by core needle biopsy), peritoneal tumor penetration, iatrogenic superficial tumor capsule laceration, or microscopically positive margins were not considered tumor rupture, and the outcome of these patients was shown to be similar with those patients whose tumor was removed without any minor defects.^{9,20}

In our study, we defined tumor rupture as the report in the medical record of any tumor spillage or fracture, piecemeal resection, and incisional biopsy, occurring either before or at the

time of the operation. In contrast, blood-tinged ascites, gastrointestinal perforation to the abdominal cavity, or infiltration of adjacent structures were not included in the tumor rupture category, while iatrogenic superficial laceration of the tumor capsule without tumor spillage was.

For the purpose of this analysis, we retained the original definition entered by the surgeon of the participating institutions and reviewed by the surgical subcommittee of the study. The worse prognosis associated with tumor rupture was confirmed.¹² While this difference may be predominantly associated with tumor biology, another possible explanation may have to do with the type of tumor ruptures. It is very unlikely to observe spillage/fracture or intra-abdominal bleeding in low-to intermediate-risk GIST. Most of the tumor ruptures observed in these patients may simply consist of iatrogenic superficial laceration of the tumor capsule with no spillage, something that is now shown to have a limited effect on prognosis.²⁰ This may have therapeutic implications because many guidelines recommend treatment of patients affected by localized ruptured GIST with postoperative imatinib until recurrence. Owing to the low risk of recurrence in case of minor defects with no spillage, some of these patients may be overtreated.

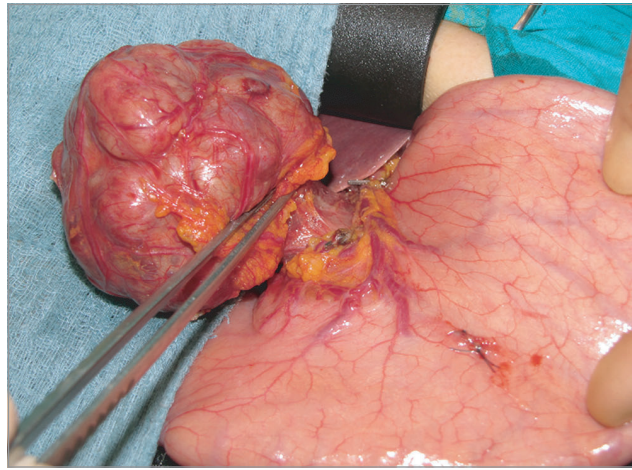
As far as the status of microscopic surgical margins is concerned, these findings are consistent with other reports, both in retrospective and prospective series in GIST.⁶⁻⁹ However, opposite observations were reported in soft tissue sarcoma of extremities or trunk wall: positive microscopic surgical margins are associated with a higher risk of local recurrence and death, especially for tumors located at critical sites.²² The same is true for breast cancer, melanoma, gastric cancer, pancreatic cancer, and rectal cancer.²³⁻²⁷

On the contrary, in retroperitoneal sarcoma, the status of microscopic surgical margins is of limited prognostic value because the large size of these tumors at presentation along with their critical location in proximity to major vessels, nerves, bone, and intra-abdominal viscera limit the possibility of achieving a true negative-margin resection in most patients.²⁸ In addition, assessment of a positive margin based on a tissue section placed on a pathology slide in these sizable tumors is subject to numerous processing variables, such as number of samples and location, tissue contraction after resection, and fixation.

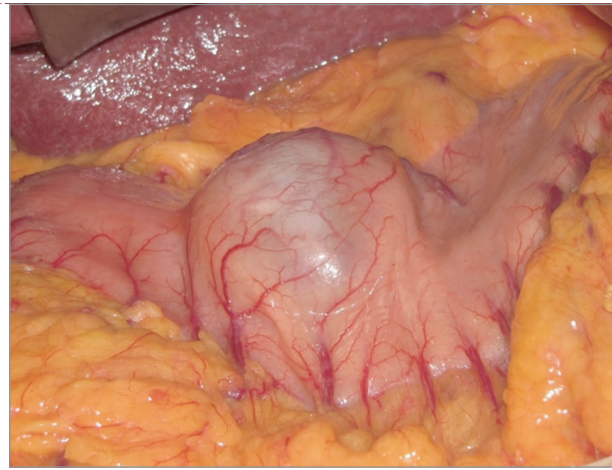
In GIST, this study confirmed that status of microscopic surgical margins were not associated with RFS and OS. Beside what is said about retroperitoneal sarcomas that may also apply to GIST, these results are also consistent with how surgical margins are reported in these tumors. In fact, the organ of origin of the tumor is sampled, while the tumor surface toward the abdominal cavity is not examined. Given the peculiar pattern of growth of these tumors, most of the time, the margins at risk are rather the one toward the abdominal cavity and not the ones on the surface of the organ of origin, but the current classification does not account for them (Figure 3A). This may not apply to some GIST that are indeed confined to the GI wall (Figure 3B), where a positive margin may be associated to a higher local recurrence risk, but this is left to be proven and is also counterbalanced by the low biologic risk these tumors often, if not always, in fact have. However, one exception does exist: positive margins for GIST located to the

Figure 3. Margins at Risk in Gastrointestinal Stromal Tumors (GISTs)

A Gastric GIST with a typical extraluminal growth



B Gastric GIST confined to the gastric wall



rectum have shown to be associated to a significantly higher local recurrence risk and eventually death.²⁹ Given their rarity and limited number in our study, we could not confirm this in our analysis. Indeed, rectal GISTs occur predominantly if not always in the lower third of the rectum outside the abdominal cavity. Status of surgical margins are easier to assess and their affect outcome is logical at least.

Therefore, with all the limitations of an observational cohort study, we believe that this study adds to the evidence and is consistent with many other reports⁷⁻⁹ and recommendations^{1,2} that the presence of positive microscopic margins should not be factored in decision-making about adjuvant therapy. However, every attempt should be made to reduce this likelihood from occurring. A multimodal approach, which includes a more liberal use of preoperative imatinib, is generally recommended whenever a positive mar-

gin over the organ of origin can be anticipated on a preoperative assessment. This is particularly true of rectal GIST.

Conclusions

In conclusion, for the studies on localized GIST to come and the daily management of our patients, we recommend to distinguish tumor rupture from microscopic positive surgical margins, because their associations with outcome were shown to be clearly different. While the former significantly affect prognosis and should be factored into the therapeutic decision-making, the latter without tumor rupture seems not, but it should still be avoided whenever possible because long-term effects on outcome cannot be ruled out at least in a proportion of patients.

ARTICLE INFORMATION

Accepted for Publication: January 30, 2020.

Published Online: April 1, 2020.
doi:10.1001/jamasurg.2020.0397

Author Affiliations: Fondazione IRCCS Istituto Nazionale dei Tumori, Milano, Italy (Gronchi, Fumagalli, Casali); Institute Curie, Paris, France (Bonvalot); Instituto Valenciano De Oncologia, Valencia, Spain (Poveda Velasco); Adelaide Cancer Centre, Kurralta Park, and Division of Medicine, University of Adelaide, Adelaide, Australia (Kotasek); Maria Sklodowska-Curie Memorial Cancer Centre and Institute of Oncology, Warsaw, Poland (Rutkowski); Mannheim University Medical Center, Mannheim, Germany (Hohenberger); Royal Marsden Hospital, London, England (Judson); Institut Bergonie, Bordeaux, France (Italiano); Leiden University Medical Center, Leiden, the Netherlands (Gelderblom); The Netherland Cancer Institute, Amsterdam, the Netherlands (van Coevorden); Centre Oscar Lambret, Lille, France (Penel); Medizinische Universitätsklinik II, Tübingen, Germany (Kopp); Hôpital La Timone, Aix-Marseille Université, Marseille, France (Duffaud); Prince of Wales Hospital, Sydney,

Australia (Goldstein); Hospital Universitario Viergen del Rocio Sevilla, Seville, Spain (Broto); University Hospital Münster, Münster, Germany (Wardelmann); EORTC Headquarters, Brussels, Belgium (Marréaud, Zaffaroni, Litière); Princess Alexandra Hospital, The University of Queensland, Brisbane, Australia (Smithers); Institute Gustave Roussy, Villejuif, France (Le Cesne); Department of Medicine, NetSARC and LYRIC, Centre Leon Berard, Lyon, France (Blay); Oncology and Hemato-Oncology Department, University of Milan, Milan, Italy (Casali).

Author Contributions: Dr Marréaud and Ms Litière at the independent EORTC Charitable Trust in Brussels had full access to all the data in the study and take responsibility for the integrity of the data and the accuracy of the data analysis.

Concept and design: Gronchi, Bonvalot, Rutkowski, Hohenberger, Judson, van Coevorden, Marreaud, Blay, Casali.

Acquisition, analysis, or interpretation of data: All authors.

Drafting of the manuscript: Gronchi, Zaffaroni, Litière, Blay.

Critical revision of the manuscript for important

intellectual content: Bonvalot, Poveda Velasco, Kotasek, Rutkowski, Hohenberger, Fumagalli, Judson, Italiano, Gelderblom, van Coevorden, Penel, Kopp, Duffaud, Goldstein, Martin Broto, Wardelmann, Marreaud, Smithers, Le Cesne, Zaffaroni, Litière, Blay, Casali.

Statistical analysis: Zaffaroni, Litière.

Obtained funding: Hohenberger, Blay.

Administrative, technical, or material support: Gronchi, Bonvalot, Poveda Velasco, Rutkowski, Hohenberger, Gelderblom, Penel, Goldstein, Wardelmann, Blay.

Supervision: Gronchi, Fumagalli, Martin Broto, Marreaud, Le Cesne, Blay, Casali.

Conflict of Interest Disclosures: Dr Gronchi reported personal fees from Novartis Oncology, Pfizer, and Bayer during the conduct of the study; grants and personal fees from PharmaMar; and personal fees from Lilly, SpringWorks, and Nanobiotix outside the submitted work. Dr Bonvalot reported personal fees and nonfinancial support from Nanobiotix and Pharmamar and nonfinancial support from Novartis outside the submitted work. Dr Rutkowski reported personal fees from Novartis, BMS, MSD, Roche,

Amgen, and Pierre Fabre outside the submitted work. Dr Fumagalli reported receiving funds for clinical studies and research activities by Blueprint Medicines, Deciphera Pharmaceuticals, and Pfizer. Dr Judson reported personal fees and nonfinancial support from Novartis during the conduct of the study and personal fees from GlaxoSmithKline and Bayer outside the submitted work. Dr Italiano reported grants from MSD, nonfinancial support from Merck; grants and personal fees from Bayer, AstraZeneca, and Roche; personal fees from Lilly and Springworks; and nonfinancial support from GSK outside the submitted work. Dr Goldstein reported other support from Novartis and AGITG during the conduct of the study. Dr Broto reported grants and personal fees from PharmaMar, Lilly, Bayer, and Eisai; grants from Novartis, GSK, Lixte, Karyopharm, Blueprint, Deciphera, Nektar, Forma, Amgen, and Daiichi Sankyo outside the submitted work; and was Chairman of Spanish Sarcoma Group from 2010 to October 2018, Vice President of GEIS since October 2018, served on the CTOS board of directors from 2015 to 2017, and is an ESMO Sarcoma faculty member. Dr Wardelmann reported personal fees from Novartis Oncology, Milestone, Menarini, Roche, Nanobiotix, Lilly, Bayer, and New Oncology outside the submitted work. Dr Le Cesne reported personal fees from Pharmamar, Eisai, Lilly, Bayer, and Ose-Immune outside the submitted work. Dr Blay reported grants and personal fees from Novartis during the conduct of the study and grants and personal fees from Pfizer, Bayer, GSK, and Deciphera outside the submitted work. Dr Casali reported grants and personal fees from Bayer, Deciphera, Eisai, and Eli Lilly; personal fees from Nektar Ther; grants and personal fees from Pfizer; grants from Advenchen Lab, Amgen, AROG, Blueprint, Daiichi Sankyo, Epizyme, Glaxo, Karyopharm, Novartis, and PharmaMar outside the submitted work. No other disclosures were reported.

Additional Contributions: We thank Anne Kirkpatrick, MSc, Axelle Nzokirantevye, MSc, Christine Olungu, MSc, Monia Ouali, MSc, Martine Van Glabbeke, MSc, and the other staff at EORTC headquarters who contributed to the success of the randomized trial. We thank the patients who took part, and their relatives, and thank the participating investigators and centres who worked on the study, in addition to those mentioned as coauthors, from the EORTC Soft Tissue and Bone Sarcoma Group (STBSG), including Viktor Grünwald, MD (Medizinische Hochschule Hannover, Hannover, Germany), Jaap Verweij, MD, PhD, (Erasmus MC Cancer Institute, Rotterdam, the Netherlands), Sjoerd Rodenhuis, MD (the Netherlands Cancer Institute-Antoni Van Leeuwenhoekziekenhuis, Amsterdam, the Netherlands), Patrick Schöffski, MD (University Hospitals Leuven, KU Leuven, Leuven, Belgium), Peter Ebeling, MD (Universitaetsklinikum, Essen, Essen, Germany), Michael Leahy, MD (The Christie NHS Foundation Trust, Manchester, UK), Peter Reichardt, MD (HELIOS Klinikum Berlin-Buch, Berlin, Germany), Marcus Schlemmer, MD (Klinikum der Universität München, Campus Grosshadern, München, Germany); from the Australasian Gastro-Intestinal Trials Group (AGITG) with the NHMRC Clinical Trials Centre (CTC) including Mark Smithers, MD (Princess Alexandra Hospital, Brisbane, Australia) and John Simes, MD (NHMRC Clinical Trials Centre, Sydney, Australia), Kate Wilson, MD (NHMRC Clinical Trials Centre, Sydney, Australia); from the Italian Sarcoma

Group (ISG) including Giovanni Grignani, MD (Fondazione del Piemonte per l'Oncologia, Institute for Cancer Research and Treatment, Candiolo, Italy), Guido Biasco, MD (Policlinico S. Orsola-Malpighi, Bologna, Italy), Alessandro Comandone, MD (Ospedale Gradenigo, Torino, Italy); from UNICANCER including Olivier Bouche, MD (CHU de Reims, Hôpital Robert Debré, Reims, France), Jean Luc Raoul, MD (Centre Eugene Marquis, Rennes, France); from the French Sarcoma Group (FSG) including Emmanuelle Bompas, MD (Institut de Cancerologie de l'Ouest, Centre Rene Gauducheau, Nantes, St. Herblain, France); from Grupo Español de Investigación en Sarcomas (GEIS) including Xavier Garcia del Muro, MD (ICO L'Hospitalet, Hospital Duran i Reynals, Institut Catala D'Oncologia, L'Hospitalet de Llobregat, Spain), Antonio Lopez Pousa, MD (Hospital De La Santa Creu I Sant Pau, Barcelona, Spain); and the following pathologists for performing the central review for EORTC STBSG: Cyril Fisher, MD (Royal Marsden Hospital, Chelsea, London, England), Eva Wardelmann, MD (Gerhard Domagk Institute of Pathology, University Hospital Münster, Münster, Germany), Pancras Cornelis W. Hogendoorn, MD (Leiden University Medical Center, Leiden, the Netherlands), Raf Sciort, MD (UZ Leuven, Campus Gasthuisberg, Leuven, Belgium), Soren Daugaard, MD (University of Copenhagen, Copenhagen, Denmark), for UNICANCER, Jean Michel Coindre, MD (Institut Bergonie, Bordeaux, France); for AGITG: Steve Pieterse, MD (Adelaide Pathology Partners, Adelaide, Australia); for GEIS, Antonio Lombart-Bosch, MD (Department of Pathology, University of Valencia, Valencia, Spain); and for ISG, Paola Collini, MD (Fondazione IRCCS Istituto Nazionale Tumori, Milano, Italy). This study was an international academic trial designed by the members of the steering committee of the trial, appointed by the cooperative groups. No Pharma company had any role in the design, conduct or analysis of the study. Novartis provided the study drug and an educational grant to the EORTC. Data were collected by investigators and associated site personnel, managed by the data manager and clinical research physician and analyzed by statisticians working in the independent Trial Center at the EORTC. No compensation was received from a funding sponsor for any of these participating investigators.

REFERENCES

- Casali PG, Abecassis N, Aro HT, et al; ESMO Guidelines Committee and EURACAN. Gastrointestinal stromal tumours: ESMO-EURACAN Clinical Practice Guidelines for diagnosis, treatment and follow-up. *Ann Oncol*. 2018;29(suppl 4):iv68-iv78. doi:10.1093/annonc/mdy095
- von Mehren M, Randall RL, Benjamin RS, et al. Gastrointestinal stromal tumors, version 2.2014. *J Natl Compr Canc Netw*. 2014;12(6):853-862. doi:10.6004/jnccn.2014.0080
- Langer C, Gunawan B, Schüler P, Huber W, Füzesi L, Becker H. Prognostic factors influencing surgical management and outcome of gastrointestinal stromal tumours. *Br J Surg*. 2003;90(3):332-339. doi:10.1002/bjs.4046
- Ahmed I, Welch NT, Parsons SL. Gastrointestinal stromal tumours (GIST): 17 years experience from Mid Trent Region (United Kingdom). *Eur J Surg Oncol*. 2008;34(4):445-449. doi:10.1016/j.ejso.2007.01.006

- Hinz S, Pauser U, Egberts JH, Schafmayer C, Tepel J, Fändrich F. Audit of a series of 40 gastrointestinal stromal tumour cases. *Eur J Surg Oncol*. 2006;32(10):1125-1129. doi:10.1016/j.ejso.2006.05.018
- Everett M, Gutman H. Surgical management of gastrointestinal stromal tumors: analysis of outcome with respect to surgical margins and technique. *J Surg Oncol*. 2008;98(8):588-593. doi:10.1002/jso.21030
- DeMatteo RP, Lewis JJ, Leung D, Mudan SS, Woodruff JM, Brennan MF. Two hundred gastrointestinal stromal tumors: recurrence patterns and prognostic factors for survival. *Ann Surg*. 2000;231(1):51-58. doi:10.1097/00000658-200001000-00008
- Hølmekjær T, Bjerkehagen B, Hompland I, Stoldt S, Boye K. Relationship between R1 resection, tumour rupture and recurrence in resected gastrointestinal stromal tumour. *Br J Surg*. 2019;106(4):419-426. doi:10.1002/bjs.11027
- McCarter MD, Antonescu CR, Ballman KV, et al; American College of Surgeons Oncology Group (ACOSOG) Intergroup Adjuvant Gist Study Team. Microscopically positive margins for primary gastrointestinal stromal tumors: analysis of risk factors and tumor recurrence. *J Am Coll Surg*. 2012;215(1):53-59. doi:10.1016/j.jamcollsurg.2012.05.008
- Joensuu H. Risk stratification of patients diagnosed with gastrointestinal stromal tumor. *Hum Pathol*. 2008;39(10):1411-1419. doi:10.1016/j.humpath.2008.06.025
- Joensuu H, Vehtari A, Riihimäki J, et al. Risk of recurrence of gastrointestinal stromal tumour after surgery: an analysis of pooled population-based cohorts. *Lancet Oncol*. 2012;13(3):265-274. doi:10.1016/S1470-2045(11)70299-6
- Casali PG, Le Cesne A, Poveda Velasco A, et al. Time to definitive failure to the first tyrosine kinase inhibitor in localized GI stromal tumors treated with imatinib as an adjuvant: a European organisation for research and treatment of cancer soft tissue and bone sarcoma group intergroup randomized trial in collaboration with the Australasian Gastro-Intestinal Trials Group, UNICANCER, French Sarcoma Group, Italian Sarcoma Group, and Spanish Group for Research on Sarcoma. *J Clin Oncol*. 2015;33(36):4276-4283. doi:10.1200/JCO.2015.62.4304
- Casali PG, Le Cesne A, Poveda Velasco A, et al. Time to definitive failure to the first tyrosine kinase inhibitor in localized gastrointestinal stromal tumors (GIST) treated with imatinib as an adjuvant: final results of the EORTC STBSG, AGITG, UNICANCER, FSG, ISG, and GEIS randomized trial. *Ann Oncol*. 2017;28(5):v605-v649. doi:10.1093/annonc/mdx440
- Fletcher CDM, Berman JJ, Corless C, et al. Diagnosis of gastrointestinal stromal tumors: a consensus approach. *Hum Pathol*. 2002;33(5):459-465. doi:10.1053/hupa.2002.123545
- Hohenberger P, Bonvalot S, van Coevorden F, et al. Quality of surgery and surgical reporting for patients with primary gastrointestinal stromal tumours participating in the EORTC STBSG 62024 adjuvant imatinib study. *Eur J Cancer*. 2019;120:47-53. doi:10.1016/j.ejca.2019.07.028
- Kaplan EL, Meier P. Nonparametric estimation from incomplete observations. *J Am Stat Assoc*.

- 1958;53:457-481. doi:10.1080/01621459.1958.10501452
17. Cox DR. Regression models and life tables. *J R Stat Soc B*. 1972;34:187-220.
18. Hølmekjakk T, Bjerkehagen B, Boye K, Bruland Ø, Stoldt S, Sundby Hall K. Definition and clinical significance of tumour rupture in gastrointestinal stromal tumours of the small intestine. *Br J Surg*. 2016;103(6):684-691. doi:10.1002/bjs.10104
19. Boye K, Berner JM, Hompland I, et al. Genotype and risk of tumour rupture in gastrointestinal stromal tumour. *Br J Surg*. 2018;105(2):e169-e175. doi:10.1002/bjs.10743
20. Hølmekjakk T, Hompland I, Bjerkehagen B, et al. Recurrence-free survival after resection of gastric gastrointestinal stromal tumors classified according to a strict definition of tumor rupture: a population-based study. *Ann Surg Oncol*. 2018;25(5):1133-1139. doi:10.1245/s10434-018-6353-5
21. Nishida T, Hølmekjakk T, Raut CP, Rutkowski P. Defining tumor rupture in gastrointestinal stromal tumor. *Ann Surg Oncol*. 2019;26(6):1669-1675. doi:10.1245/s10434-019-07297-9
22. Gronchi A, Lo Vullo S, Colombo C, et al. Extremity soft tissue sarcoma in a series of patients treated at a single institution: local control directly impacts survival. *Ann Surg*. 2010;251(3):506-511. doi:10.1097/SLA.0b013e3181cf87fa
23. Pilewskie M, Morrow M. Margins in breast cancer: how much is enough? *Cancer*. 2018;124(7):1335-1341. doi:10.1002/cncr.31221
24. Postlewait LM, Maithel SK. The importance of surgical margins in gastric cancer. *J Surg Oncol*. 2016;113(3):277-282. doi:10.1002/jso.24110
25. Mukkai Krishnamurthy D, Wise PE. Importance of surgical margins in rectal cancer. *J Surg Oncol*. 2016;113(3):323-332. doi:10.1002/jso.24136
26. Delpero JR, Jeune F, Bachellier P, et al. Prognostic value of resection margin involvement after pancreaticoduodenectomy for ductal adenocarcinoma: updates from a french prospective multicenter study. *Ann Surg*. 2017;266(5):787-796. doi:10.1097/SLA.0000000000002432
27. Doecker MP, Thompson ZJ, Fisher KJ, et al. Is a Wider margin (2 cm vs. 1 cm) for a 1.01-2.0 mm melanoma necessary? *Ann Surg Oncol*. 2016;23(7):2336-2342. doi:10.1245/s10434-016-5167-6
28. Gronchi A, Strauss DC, Miceli R, et al. Variability in patterns of recurrence after resection of Primary Retroperitoneal Sarcoma (RPS): a report on 1007 patients from the multi-institutional collaborative Transatlantic RPS Working Group. *Ann Surg*. 2016;263(5):1002-1009. doi:10.1097/SLA.0000000000001447
29. Jakob J, Mussi C, Ronellenfisch U, et al. Gastrointestinal stromal tumor of the rectum: results of surgical and multimodality therapy in the era of imatinib. *Ann Surg Oncol*. 2013;20(2):586-592. doi:10.1245/s10434-012-2647-1