



**Universiteit
Leiden**
The Netherlands

The cancer patient and cardiology

Zamorano, J.L.; Gottfridsson, C.; Asteggiano, R.; Atar, D.; Badimon, L.; Bax, J.J.; ... ;
Minotti, G.

Citation

Zamorano, J. L., Gottfridsson, C., Asteggiano, R., Atar, D., Badimon, L., Bax, J. J., ... Minotti, G. (2020). The cancer patient and cardiology. *European Journal Of Heart Failure*, 22(12), 2290-2309. doi:10.1002/ejhf.1985

Version: Publisher's Version

License: [Creative Commons CC BY 4.0 license](#)

Downloaded from: <https://hdl.handle.net/1887/3232679>

Note: To cite this publication please use the final published version (if applicable).

The cancer patient and cardiology

José Luis Zamorano^{1,*}, Christer Gottfridsson², Riccardo Asteggiano^{3,4}, Dan Atar^{5,6}, Lina Badimon⁷, Jeroen J. Bax⁸, Daniela Cardinale⁹, Antonella Cardone¹⁰, Elizabeth A.M. Feijen¹¹, Péter Ferdinandy^{12,13}, Teresa López-Fernández¹⁴, Chris P. Gale¹⁵, John H. Maduro¹⁶, Javid Moslehi¹⁷, Torbjørn Omland¹⁸, Juan Carlos Plana Gomez¹⁹, Jessica Scott²⁰, Thomas M. Suter²¹, and Giorgio Minotti²²

¹Department of Cardiology, University Hospital Ramón y Cajal, CiberCV, Madrid, Spain; ²Cardiovascular Safety Centre of Excellence, Patient Safety, CMO Organization, AstraZeneca, Gothenburg, Sweden; ³ESC Council of Cardio-Oncology, Insubria University of Medicine, Varese, Italy; ⁴LARC (Laboratorio Analisi Ricerca Clinica), Turin, Italy; ⁵Department of Cardiology, Oslo University Hospital Ullevål, Oslo, Norway; ⁶Institute of Clinical Sciences, University of Oslo, Oslo, Norway; ⁷ESC Advocacy Committee 2018–2020, Director Cardiovascular Programme (ICCC)-IR Hospital de la Santa Creu i Sant Pau, CiberCV, Barcelona, Spain; ⁸Department of Cardiology, Leiden University Medical Centre, Leiden, the Netherlands; ⁹Cardio-Oncology Unit, European Institute of Oncology, IRCCS, Milan, Italy; ¹⁰European Cancer Patient Coalition, Brussels, Belgium; ¹¹Princess Maxima Centre for Paediatric Oncology, Utrecht, the Netherlands; ¹²Department of Pharmacology and Pharmacotherapy, Semmelweis University, Budapest, Hungary; ¹³Pharmahungary Group, Szeged, Hungary; ¹⁴Department of Cardiology, University Hospital La Paz, IdiPAZ, Ciber CV, Madrid, Spain; ¹⁵Leeds Institute of Cardiovascular and Metabolic Medicine, University of Leeds, Leeds, UK; ¹⁶Department of Radiation Oncology, University of Groningen, University Medical Centre Groningen, Groningen, the Netherlands; ¹⁷Cardio-Oncology Program, Vanderbilt University Medical Center, Nashville, TN, USA; ¹⁸Department of Cardiology, Akershus University Hospital, University of Oslo, Oslo, Norway; ¹⁹Department of Cardiology, Texas Heart Institute and Baylor College of Medicine, Houston, TX, USA; ²⁰Exercise Oncology Research Program, Memorial Sloan Kettering Cancer Center, New York, NY, USA; ²¹Department of Cardiology, Inselspital, Bern University Hospital, Bern, Switzerland; and ²²Campus Bio-Medico University School of Medicine, Rome, Italy

Received 7 July 2020; revised 12 August 2020; accepted 14 August 2020; online publish-ahead-of-print 2 October 2020

Advances in cancer treatments have improved clinical outcomes, leading to an increasing population of cancer survivors. However, this success is associated with high rates of short- and long-term cardiovascular (CV) toxicities. The number and variety of cancer drugs and CV toxicity types make long-term care a complex undertaking. This requires a multidisciplinary approach that includes expertise in oncology, cardiology and other related specialties, and has led to the development of the cardio-oncology subspecialty.

This paper aims to provide an overview of the main adverse events, risk assessment and risk mitigation strategies, early diagnosis, medical and complementary strategies for prevention and management, and long-term follow-up strategies for patients at risk of cancer therapy-related cardiotoxicities. Research to better define strategies for early identification, follow-up and management is highly necessary. Although the academic cardio-oncology community may be the best vehicle to foster awareness and research in this field, additional stakeholders (industry, government agencies and patient organizations) must be involved to facilitate cross-discipline interactions and help in the design and funding of cardio-oncology trials.

The overarching goals of cardio-oncology are to assist clinicians in providing optimal care for patients with cancer and cancer survivors, to provide insight into future areas of research and to search for collaborations with industry, funding bodies and patient advocates. However, many unmet needs remain. This document is the product of brainstorming presentations and active discussions held at the Cardiovascular Round Table workshop organized in January 2020 by the European Society of Cardiology.

Keywords

Cancer drugs • Cardiovascular toxicity • Prevention • Detection • Long-term follow-up • Cardio-oncology

*Corresponding author. Department of Cardiology, University Hospital Ramón y Cajal, Carretera De Colmenar Km 9.100, 28034 Madrid, Spain. Tel: +34 91 336 85 15, Email: zamorano@secardiologia.es

Cardio-oncology: an introduction

Advances in cancer treatments have improved patient survival,¹ with the result that large numbers of patients are cured of or are able to live with cancer for much longer periods of time. In addition, the ageing population will develop more cancers, which will result in higher numbers of cancer survivors.² This has led to increased rates of morbidity and mortality caused by the short- and long-term side effects of cancer therapy.³ Cardiovascular (CV) toxicity, which refers to the direct harmful effects of cancer treatments on the CV system and the acceleration of CV diseases (CVDs) related to traditional CV risk factors, has become of paramount concern.^{3,4}

The increasing number and variety of cancer drugs has increased the complexity of long-term care and in many instances cancer has become a chronic disease that requires long-term oncologic treatment, as well as the management of cancer therapy-related toxicity. Therefore, managing cardiotoxicity requires a multidisciplinary approach that involves specialists in oncology, cardiology, clinical pharmacology and other related specialties. The expanding field of cardio-oncology can help to prevent or minimize adverse events, and ensure that potentially life-saving cancer treatments are not interrupted or withheld.³ Furthermore, as many of the late CV side effects are initially asymptomatic but lead to progressive disease with an impaired prognosis, early detection is of the utmost importance.

The goals of this article are to provide an overview of the main CV adverse events of cancer therapy. Using a few examples of old and newer cancer drugs that have been associated with CV events, we will focus on current issues in risk assessment and risk mitigation strategies, early diagnosis, medical and complementary strategies for prevention and management, and long-term follow-up strategies for patients at risk for cancer therapy-related cardiotoxicities. Future research and clinical directions, and the growing importance of education programmes and networking among different stakeholders are also highlighted. This article does not therefore aim to provide consensus statements, for which the underlying research and clinical evidence are felt to be preliminary or inconsistent at some points. Rather, it aims to summarize current knowledge and to provide a framework for the pillars of cardio-oncology care (Figure 1).

Overview of cardiotoxicities associated with cancer treatments

Cancer therapies have been associated with many short- and long-term CV risks but clinical phenotypes of CV toxicities have changed remarkably since conventional chemotherapeutics were replaced by, or began to be used in combination with, newer targeted drugs, also referred to as molecularly targeted agents (MTAs). Many authoritative reviews have illustrated how CV events (type and incidence rate) may vary according to cancer drugs, doses, use in combination with other agents or radiation therapy, and underlying patient risk factors. Table 1 shows examples of CV toxicities that have been associated with conventional

chemotherapeutics, MTAs, radiation therapy and other oncologic therapies.^{3,5–19} We will not discuss each cardiotoxic agent in detail, but emphasize that older drugs, newer drugs and radiation therapy, alone or in combination, may increase the risk for a number of diverse CV events. This highlights the biological and clinical complexity of cardio-oncology.

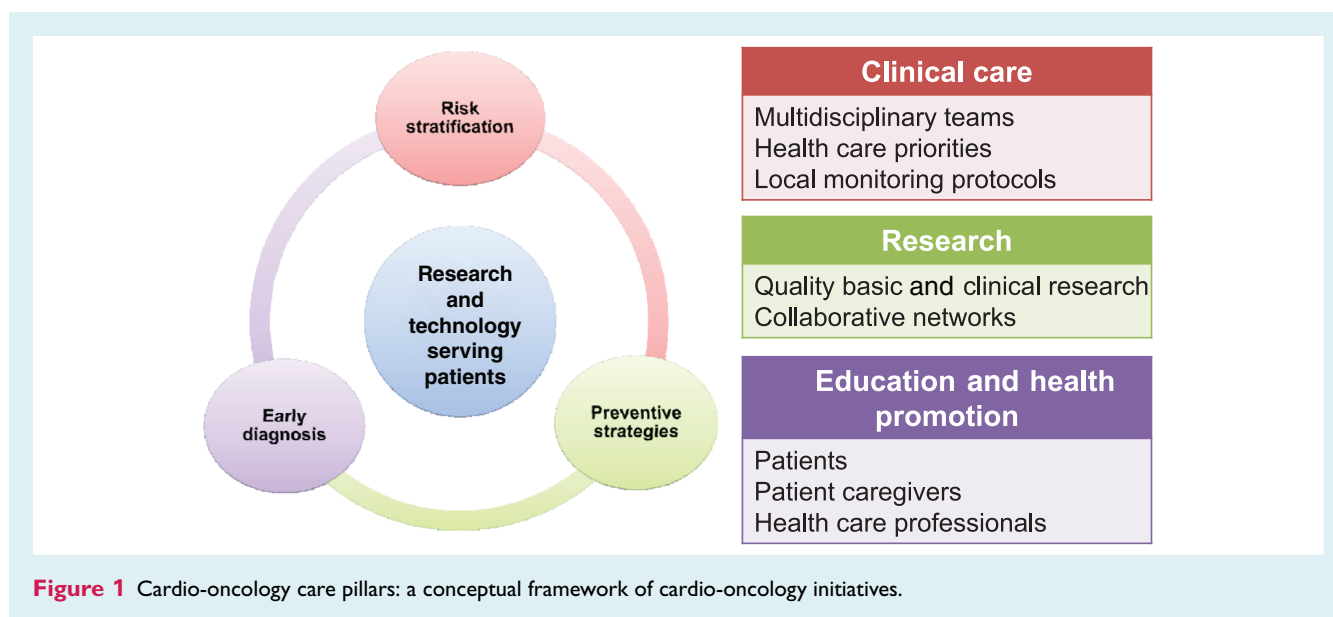
Risk stratification and mitigation

In oncology patients the risk factors for cardiotoxicity include many of the traditional risk factors for CVD that are seen in the general population. The concept of hidden cardiotoxicity was therefore introduced to emphasize that CV toxicity from a given drug may manifest only or predominantly if that particular drug is administered to patients with CV risk factors.²⁰ Data suggest that the development of CVD and cancer, respectively, may actually share common predisposing risk factors (smoking, age, obesity, hyperlipidaemia),^{3,5,21} as well as newly identified genetic risk factors such as clonal haematopoiesis.²² Table 2 shows some of the traditional and unique risk factors that may increase the risk for CV toxicity in patients receiving cancer treatments.^{3,10,23–28} Risk stratification proformas have been proposed to help clinicians identify patients at low, medium, high or very high risk for treatment-related CV events.²⁸

Anthracyclines

Anthracyclines have improved the prognosis of patients with many cancer types, including breast cancer, lymphomas, leukaemias, sarcomas and some gastrointestinal (GI) cancers, and withholding these agents for fear of cardiotoxic effects may impact survival. The cardio-oncology expert plays a key role in identifying patients at risk, offering mitigation strategies and cardioprotective therapies, and providing long-term follow-up.

Anthracyclines cause distinctive morphologic and functional damage to cardiac myocytes and anthracycline regimens are associated with a three- to five-fold greater risk for cardiotoxicity compared with non-anthracycline regimens.^{29,30} In addition to common baseline risk factors (Table 2), additional factors for anthracycline cardiotoxicity include cumulative dose, combination therapy and genetic factors.^{3,7,27,29,31–33} Cumulative dose is especially important: the risk for heart failure (HF) increases from 3–5% at 400 mg/m² to 18–48% at 700 mg/m².³⁴ In trials conducted in patients with solid tumours, HF risk was higher with bolus vs. continuous infusions,²⁹ showing that cardiotoxicity is influenced by peak plasma concentration; however, the cardioprotective effects of replacing bolus with continuous infusions were not observed in children with acute lymphoblastic leukaemia.³⁵ Strategies for reducing the risk for cardiotoxicity include the use of liposomal vs. non-liposomal anthracycline formulations and the use of cardioprotective agents (see the section on strategies for the prevention and treatment of cardiotoxicities).^{36–38} Another option may be to consider less toxic but equally active alternatives. A 7-year follow-up of a randomized controlled trial found that docetaxel/cyclophosphamide therapy had superior disease-free survival with a lower risk for



cardiotoxicity compared with doxorubicin/cyclophosphamide in both older and younger women with early breast cancer.³⁹

Fluoropyrimidines

Fluoropyrimidines such as 5-fluorouracil (5-FU) and capecitabine are frequently prescribed for GI, breast, colorectal, and head and neck cancers. Fluoropyrimidines have been associated with a significant risk for chest pain, presenting as atypical chest pain, angina on exertion or rest, and acute coronary syndromes including myocardial infarction.⁴⁰ The overall incidence of fluoropyrimidine-associated cardiac events is high enough to classify 5-FU as the second most common chemotherapeutic associated with cardiotoxicity after anthracyclines.⁴⁰ The risk becomes higher with continuous infusions compared with bolus regimens, which contrasts with that associated with anthracyclines and indicates that cardiotoxicity is influenced primarily by plasma exposure over time. Uncertainty exists around precisely how CVD risk factors influence fluoropyrimidine cardiotoxicity, and the role of dihydropyrimidine dehydrogenase (DPD) activity (i.e. the main enzyme for inactivation of fluoropyrimidines).⁴⁰ About 3–8% of the population is partially deficient in DPD activity and potentially exposed to increased haematologic and non-haematologic toxicity of 5-FU and capecitabine.⁴¹ Genetic polymorphisms in *DPYD* (i.e. the gene encoding for DPD) can result in low DPD activity and pre-emptive screening for *DPYD* variants and *DPYD* genotype-guided dose adjustments have been recommended to minimize toxicity.⁴¹ Information about the efficacy of this strategy against fluoropyrimidine cardiotoxicity is nonetheless limited at this point in time.

Trastuzumab

The anti-HER2 monoclonal antibody, trastuzumab, has revolutionized the management of HER2-overexpressing breast

tumours and heralded the era of drugs targeted at receptors overexpressed in tumours. HER2, a member of the epidermal growth factor receptors family, is expressed in approximately 20–25% of breast tumours, but is constitutively expressed also in the heart, serving multiple functions in energy metabolism, sarcomere proteins turnover, and adaptation to chemical and haemodynamic challenges.⁴² Trastuzumab has been associated with left ventricular (LV) dysfunction in up to 20% of patients, with significant declines in global longitudinal strain (GLS) seen at 3-month follow-up.^{3,43} The rate of trastuzumab cardiotoxicity is increased when an anthracycline is given before trastuzumab, and even more so when the drugs are given concurrently (however, this is no longer clinical practice).⁷ When administered after an anthracycline, trastuzumab causes cardiotoxicity that differs dramatically from that seen with anthracyclines. Trastuzumab cardiotoxicity is in fact characterized by only minor structural myocardial changes, is more likely to be reversible, is not cumulative dose-dependent, and generally does not recur with subsequent stressors.⁷ Trastuzumab cardiotoxicity also shows good responses to HF therapy.⁷ Other anti-HER2-targeted therapies, such as the antibodies pertuzumab and trastuzumab emtansine (T-DM1), and the tyrosine kinase inhibitor (TKI) lapatinib, appear to share this pattern of cardiotoxicity.³ In contrast, the use of anthracycline-free regimens can reduce the risk for trastuzumab cardiotoxicity.³

Early discontinuation of trastuzumab should always be weighed against oncologic risk as it represents an independent predictor of overall survival even after adjusting for cardiotoxicity. Early discontinuation has been associated with a two- to three-times greater risk for clinically significant relapse of breast cancer, and greater risk for both CV and non-CV death.^{44,45}

Product labelling recommends that treatment be withheld until the cardiac status has stabilized if LV ejection fraction (LVEF) drops by $\geq 10\%$ and to $< 50\%$.⁴⁶ Resumption of trastuzumab, supported by HF therapy and close cardio-oncology monitoring,

Table 1 Main cardiac and vascular events associated with some chemotherapeutics, molecularly targeted agents and radiation therapy^{3,5-19}

	Cardiomyopathy	Myocarditis	Pericardial Disease	Arrhythmias	Myocardial ischemia	Hypertension	Vascular events	Valve disease
CHEMOTHERAPEUTICS								
Anthracyclines	⊗		⊗	⊗				
Tubulin active agents	⊗			⊗				
Antimetabolites (fluoropyrimidines)	⊗	⊗			⊗			
Alkylating agents	⊗		⊗	⊗	⊗	⊗	⊗	
NATURAL COMPOUNDS								
Arsenic trioxide				⊗		⊗		
RADIATION THERAPY								
	⊗		⊗	⊗	⊗		⊗	⊗
MOLECULARLY TARGETED AGENTS								
Anti-HER2								
Antibodies	⊗							
TKI, lapatinib	⊗			⊗				
Anti-angiogenics								
Antibodies	⊗				⊗	⊗	⊗	
TKI	⊗			⊗	⊗	⊗	⊗	
BCR-ABL1 TKI	⊗			⊗	⊗	⊗	⊗	
BTK TKI				⊗		⊗		
Proteasome inhibitors	⊗					⊗	⊗	
RAF+MEK inhibitors	⊗			⊗		⊗		
Cyclin inhibitors				⊗				
IMMUNOTHERAPIES								
Immune checkpoint inhibitors	⊗	⊗	⊗	⊗			⊗	
Immunomodulators				⊗	⊗	⊗	⊗	
HORMONE THERAPIES								
Androgen deprivation therapies						⊗	⊗	
ADAPTIVE THERAPIES								
CAR T cells	⊗		⊗	⊗		⊗	⊗	

Arrhythmias (atrial fibrillation, ventricular tachyarrhythmias, atrio-ventricular block, long QTc); cardiomyopathy (mainly dilative, restrictive in the case of radiation therapy); hypertension [mainly systemic, pulmonary in the case of dasatinib (BCR-ABL1 TKI), MEK inhibitors, CAR-T cells]; myocardial ischaemia (acute coronary syndrome, angina, coronary artery disease); vascular event (arterial thrombosis, venous thromboembolism, vasculitis). Cyclin inhibitors includes cyclin-dependent kinase (CDK) 4 and 6 inhibitors. BCR-ABL1, breakpoint cluster region-Abelson kinase 1; BTK, Bruton tyrosine kinase; CAR, chimeric antigen receptor; HER2, human epidermal growth factor receptor-2; TKI, tyrosine kinase inhibitor.

Table 2 Baseline risk factors for cardiotoxicity^{3,10,23–28}

Demographic factors

- Age: <10 years, >65 years

Lifestyle factors

- Smoking
- High alcohol intake

Patient history factors

- Positive family history of premature CVD (<50 years of age)
- Family history of sudden death (occult familial dilated cardiomyopathy, rare variants in cardiomyopathy-associated genes, congenital LQTS)

• Comorbidities:

- Atherothrombotic disease
- Diabetes mellitus
- Dyslipidaemia
- Electrolyte imbalance
- Hypercholesterolaemia
- Hypothyroidism

Treatment-related factors

- Prior anthracycline use (including dose, and formulation)
- Prior RT, especially to chest or mediastinum

CV-related factors

- HF with preserved or reduced ejection fraction
- Asymptomatic LV dysfunction (LVEF <50%)
- Evidence of CAD (previous myocardial infarction, angina, PCI or CABG, myocardial ischaemia)
- Moderate and severe VHD with LVH or LV impairment
- Hypertensive heart disease with LV hypertrophy

Cancer-related factors

- Primary cancer site (mostly pancreatic, brain, stomach, kidney, lung, lymphoma, myeloma)
- Histology (especially adenocarcinoma)

- African ethnicity

- Sedentary lifestyle

- Reports of syncope
- History of VTE, inherited thrombophilia
- History of transfusions
- Impaired hepatic drug metabolism CVAD
- Elevated cardiac biomarkers
 - Hypertension
 - Impaired renal function, CKD, renal failure
 - Infection
 - Obesity
 - Pulmonary disease

- Hormone agent use
- Erythropoiesis stimulating agents use
- QT-prolonging agent use

- Cardiomyopathy (hypertrophic, dilated, or restrictive)
- Significant cardiac arrhythmias (e.g. AF, AV block, ventricular tachyarrhythmias), QTc prolongation

- Advanced stage (metastatic)
- Initial period after cancer diagnosis
- Low performance status

AF, atrial fibrillation; AV, atrioventricular; CABG, coronary artery bypass graft; CAD, coronary artery disease; CKD, chronic kidney disease; CV, cardiovascular; CVAD, central venous access device; CVD, cardiovascular disease; HF, heart failure; LQTS, long QT syndrome; LV, left ventricular; LVEF, left ventricular ejection fraction; LVH, left ventricular hypertrophy; PCI, percutaneous coronary intervention; RT, radiotherapy; VHD, valvular heart disease; VTE, venous thromboembolism.

can be considered in patients in whom trastuzumab therapy has been interrupted, whose LVEF is $\geq 40\%$ and/or whose signs and symptoms of HF have resolved. In a retrospective database review of patients who experienced an asymptomatic LVEF decline to <50%, there was no significant difference in LVEF at follow-up between patients who continued vs. those who interrupted trastuzumab therapy.⁴⁷ Furthermore, the prospective SAFE-HEaRt study demonstrated that interruption of HER2 therapies may not be necessary in patients with cardiac dysfunction (i.e. LVEF of 40–49% and no HF symptoms).⁴⁸ Patients were closely monitored and received HF therapies, and 90% were able to complete the planned course of therapy without a cardiac event or worsening of LVEF. When considering the interruption of trastuzumab, the risk–benefit assessment of prognosis from cancer vs. HF should be discussed with the multidisciplinary team.²⁴

Tyrosine kinase inhibitors

Tyrosine kinase inhibitors are indicated for the treatment of a wide variety of haematologic malignancies and solid tumours, and are often prescribed for prolonged periods. They are classified by target groups including human epidermal growth factor receptor inhibitors, vascular endothelial-derived growth factor receptor (VEGFR) inhibitors, and breakpoint cluster region-Abelson kinase 1 (BCR-ABL1) inhibitors.⁵ Many TKIs can be designed to target the kinase domain of a given growth factor receptor. For example, TKIs directed at VEGFR include drugs such as sunitinib, sorafenib, pazopanib, axitinib, vandetanib, cabozantinib, lenvatinib and regorafenib. Some TKIs, like ponatinib, can target both VEGFR2 and BCR-ABL1, showing that different receptors and kinases share residues liable to pharmacologic targeting.⁴⁹ Hence, TKIs may also cause off-target effects in the CV system and other organs.

By targeting kinases involved in controlling survival signalling, energy homeostasis and excitation–contraction coupling, TKIs have been linked to cardiomyopathy, HF and QT prolongation, as well as vascular toxicities.^{5,50} In pooled analyses of clinical trial data, the increased relative risk for cardiotoxic events was 1.7 for high-grade HF (HF requiring intervention or life-threatening dysfunction), 2.7 for any HF (high-grade and HF not requiring intervention),⁵¹ 2.7 for high-grade QTc prolongation (>500 ms or serious/life-threatening arrhythmias) and 8.7 for any QTc prolongation (high-grade and prolongation of 450–500 ms).⁵² Subgroup analysis showed that only sunitinib and vandetanib (especially at higher doses) were associated with significant risk for QTc prolongation. It is worth noting that most cases were of low clinical significance, but caution is recommended when patients are treated off clinical trials and receive other drugs that also prolong QTc. Nilotinib, which was not included in the analysis, has also been associated with QTc prolongation, and electrocardiogram (ECG) monitoring is recommended.⁵³

Ibrutinib, a Bruton's tyrosine kinase, which is used mainly in certain leukaemias and lymphomas, has been associated with a risk for atrial fibrillation (AF).⁵⁴ In a pooled analysis of 16 studies, the incidence of ibrutinib-associated AF was 5.77 per 100 person-years, which was much higher than in the general adult population.⁵⁴ In clinical trials, additional risk factors included history of AF and age over 65 years.¹¹ AF was managed with anticoagulant medications, with a low risk for serious bleeds, and a low incidence of discontinuation of therapy. Ibrutinib has also been associated with ventricular arrhythmias,⁵⁵ as well as the development of hypertension.⁵⁶ In a cohort study, 78% of ibrutinib users developed new-onset or worsened hypertension (systolic blood pressure \geq 130 mmHg). This was associated with a two-fold higher risk for major adverse coronary events (MACEs), which was lowered by 60% with antihypertensive therapy.⁵⁶ The CV issues with ibrutinib are underscored by a pharmacovigilance study that documented 303 CV deaths associated with ibrutinib therapy.⁵⁷ Pharmacological strategies to prevent and manage AF and hypertension are discussed in more detail in the following sections.

Immune checkpoint inhibitors

Immune checkpoint inhibitors (ICIs), such as atezolizumab, durvalumab, ipilimumab, nivolumab and pembrolizumab, are used to treat a range of cancers, and indications for their use continue to expand. Cardiotoxicities have been reported early after initiation of therapy, and can include pericardial disease, vasculitis, temporal arteritis and HF. The reported incidence of ICI-related myocarditis is low (0.04–1.14%), but it is associated with a high mortality rate (25–50%).^{12,13,58–60} Data suggest that most cases of myocarditis will present early after the initiation of ICI treatment, although it has also been reported in patients on long-term ICI therapy.⁶¹ A review of 101 cases found that 64% occurred after the first or second ICI dose.⁵⁹ Another study also found some cases to have occurred after the first ICI dose.⁵⁸

Use of combination ICI therapy seems to significantly increase the risk for myocarditis (from 0.06% to 0.27% in one case series).^{12,58} Other risk factors are poorly defined, but may include

underlying autoimmune disease, diabetes mellitus and pre-existing CVD.^{12,60,62,63}

The diagnosis of myocarditis can be challenging; in case series, elevated troponin and abnormal ECG findings were common.^{12,64} In the presence of myocardial oedema, cardiac magnetic resonance (CMR), with late gadolinium enhancement (LGE), is useful in the early course of the disease for diagnosis and risk assessment.^{64,65} Endomyocardial biopsy is the reference standard for diagnosis but is often underused as a result of its invasive nature, risk for complications, and a lack of expertise in many clinical centres.^{64–66} Registry data showed that although LGE was present in >80% of patients with non-ICI myocarditis, it was present in <50% of those with ICI-associated myocarditis.⁶⁵ Therefore, CMR with LGE should not be relied on as the sole diagnostic approach; rather, biopsy should be used in patients with suspected myocarditis and negative CMR findings.⁶⁵

The mechanism of cardiotoxicity has been related to activation of immune cells (T cells).⁵⁸ Myocarditis has been shown to respond to high doses of corticosteroids, or use of immunosuppressants.^{12,14} A case report suggested that the immunosuppressive and antirheumatic drug abatacept may be useful in treating ICI-associated myocarditis.⁶⁷

Radiotherapy

Radiotherapy may cause damage to the pericardium, vascular tree, valve structure, endocardium and myocardium, which can manifest in days, months or years.^{16,68} Women with breast cancer who received radiotherapy had a 30% greater risk for coronary heart disease, and a 38% greater risk for cardiac death compared with those who did not.⁶⁹ The risk for cardiotoxicity is increased when radiotherapy is used with concomitant anthracyclines.^{70,71} Radiotherapy-specific risk factors include the volume and dose to which the heart and its substructures are irradiated.^{72,73} The risk for LV injury was 1.4 times higher in patients with left-sided vs. right-sided breast cancer.⁷⁴ In one study, the rate of MACEs (i.e. myocardial infarction, coronary revascularization or CV death) increased linearly by 7.4% per Gray (Gy) increase in mean heart dose.⁷⁵

An analysis showed that the LV volume receiving 5 Gy was a better predictor of MACEs than mean heart dose.⁷⁶ Several prediction models for MACEs in patients with breast cancer treated with radiotherapy have been proposed. A model based on three-dimensional (3D) dose distributions to cardiac substructures uses mean heart dose, age and the presence of traditional CVD risk factors to calculate the risk for cardiotoxicity.⁷⁶ In addition, a high pre-treatment coronary artery calcium score (CACs) has been associated with MACEs in patients treated with radiotherapy.⁷⁷ After correction for age, history of ischaemic heart disease, diabetes, obesity, mean heart dose, hypercholesterolaemia and hypertension, the hazard ratio for MACE for the low CACS was 1.4, and for the combined intermediate and high CACS was 5.0 compared with a CACS of zero.

Risk mitigation strategies are focused on reducing the heart's exposure to radiation.^{72,78,79} Techniques include cardiac displacement manoeuvres (e.g. prone positioning and deep inspiratory

breath holding), personalized heart block, intensity-modulated techniques, intraoperative irradiation and/or brachytherapy, and proton irradiation.

Early diagnosis of cardiotoxicities

Guidance from the European Society of Cardiology (ESC), the American Society of Clinical Oncology (ASCO) and the European Society for Medical Oncology (ESMO) recommends a thorough assessment of baseline CV risk factors (Table 2) and a measurement of baseline cardiac function in patients who will receive potentially cardiotoxic treatments.^{3,24,80} For patients with risk factors, including signs or symptoms of current cardiac dysfunction, the guidelines recommend the further assessment of risk using biomarkers (troponins, natriuretic peptides) and evaluation of LVEF. Whenever possible, the same biomarker assays and imaging modalities should be used at baseline and throughout ongoing follow-up to ensure comparable information.³

The timing and frequency of surveillance will depend upon the specific cancer treatment, including the cumulative anthracycline dose, delivery protocol and duration, as well as the patient's baseline CV risk.³ Patients identified as being at high risk should be referred to a cardio-oncology specialist.³

Biomarkers

Although the routine use of cardiac biomarkers is not well established in patients with cancer, guidelines recommend the measurement of high-sensitivity (hs)-cardiac troponins (Tnl or TnT), and natriuretic peptides [B-type natriuretic peptide (BNP), N-terminal pro-BNP (NT-proBNP)] for those at high risk or undergoing potentially cardiotoxic therapies.^{3,24,80}

A meta-analysis of 61 trials including over 5500 patients assessed the utility of cardiac troponins and BNP/NT-proBNP to predict cancer therapy-related LV dysfunction.⁸¹ The odds of LVEF impairment were higher in patients with cancer therapy-related elevation of troponin compared with those without [odds ratio (OR) 11.9, 95% confidence interval (CI) 4.4–32.1], and troponin had a negative predictive value of 93%. The odds were highest with high-dose regimens (OR 97.9, 95% CI 52.2–183.8), anthracyclines (OR 7.0, 95% CI 1.4–34.1), and HER2 inhibitor therapy (primarily trastuzumab) (OR 10.1, 95% CI 2.1–48.9). Conversely, although mean BNP/NT-proBNP levels were increased in patients post-cancer therapy, these biomarkers did not consistently predict LV dysfunction (OR 1.7, 95% CI 0.7–4.2). It was recently suggested that post-cancer therapy elevations of NT-proBNP might herald early diastolic dysfunction rather than LV systolic dysfunction.⁸²

Troponin elevation was also useful to monitor the efficacy of preventive therapy, with lower levels seen with angiotensin-converting enzyme (ACE) inhibitor or angiotensin II receptor blocker (ARB) therapy (OR 9.8, 95% CI 2.6–37.1) and, to a lesser extent, beta-blocker therapy (OR 2.1, 95% CI 1.3–3.6).⁸¹ However, a multicentre prospective study, the International CardioOncology Society (ICOS)-one trial, did not demonstrate prevention of troponin elevations by ACE inhibitor therapy,⁸³ whereas both the PRevention of cArDiac Dysfunction during Adjuvant breast

cancer therapy (PRADA)⁸⁴ and Carvedilol Effect in Preventing Chemotherapy-Induced Cardiotoxicity (CECCY)⁸⁵ trials demonstrated an attenuation of the troponin response to anthracycline therapy by beta-blocker therapy. The utility of circulating biomarkers, and imaging with two-dimensional (2D) echocardiography, computed tomography (CT) coronary angiography, and CMR for the early detection of radiotherapy-associated cardiotoxicity is being prospectively assessed in the European multicentre MEDIRAD EARLY HEART Study.⁸⁶

Patients receiving cardiotoxic cancer therapies who have elevated troponin levels should be referred to cardio-oncology specialty services and may benefit from preventive therapies (see the section on strategies for the prevention and treatment of cardiotoxicities).^{3,24,80}

Imaging

Guidelines recommend the thorough assessment of baseline cardiac function in patients who will receive potentially cardiotoxic treatments.^{3,24,80} An echocardiogram before the initiation of therapy is generally recommended to provide a quantitative measure of LVEF and diastolic function to help identify individuals at high risk and to establish a baseline, should symptoms develop during therapy.^{3,24,80}

Several studies have shown that 3D echocardiography and CMR provide more accurate measurements of LVEF and LV volumes than 2D echocardiography^{87,88} or multi-gated acquisition (MUGA).^{88,89} However, quantitative 2D echocardiography may be used when issues of availability, cost or expertise prohibit the use of 3D echocardiography or CMR imaging. The same imaging modality and the same equipment should be used for baseline and longitudinal follow-up to minimize variability and to ensure the consistent interpretation of results.³

The frequency of surveillance imaging should be determined based on clinical judgement and patient circumstances.^{3,24,80} For example, patients who are identified as being at low risk (normal baseline echocardiography, no clinical risk factors) may require less frequent surveillance compared with those with reduced LVEF, or structural heart disease on baseline echocardiography, or with clinical risk factors.³ Survivors who received highly cardiotoxic cancer therapies or who developed cardiotoxicity during therapy are candidates for long-term surveillance echocardiography.

Echocardiography-based strain imaging may be particularly useful.^{80,90} In a meta-analysis of 21 studies including over 1700 patients with different malignancies and treated with anthracyclines with and without trastuzumab, reduced GLS was associated with a 12-fold greater risk for cardiotoxic events (clinically significant change in LVEF with or without new-onset HF symptoms).⁹¹ A reduction of GLS of >15% from baseline is generally considered abnormal and a marker of early LV subclinical dysfunction.³ In a 2020 case-control study conducted in patients on ICIs, GLS demonstrated significant decreases in those who developed myocarditis compared with those who did not, and the risk for MACEs was higher with lower GLS.⁹² In addition, a prospective follow-up study showed that GLS was responsive to cardioprotection, improving in patients receiving beta-blocker therapy

among patients treated with anthracyclines with or without trastuzumab.⁹³ The on-going Strain sURveillance of Chemotherapy for improving Cardiovascular Outcomes (SUCCOUR) is a randomized controlled trial that will assess whether GLS-guided cardioprotective therapy will improve cardiac function in high-risk patients undergoing cardiotoxic chemotherapies.⁹⁴

Cardiovascular magnetic resonance imaging may be particularly useful to evaluate vascular cardiotoxicities. Stress echocardiography, stress CMR, CT and positron emission tomography are options for the evaluation of ischaemia in patients receiving therapies that have the potential to cause vasospasms or accelerate atherosclerosis.⁹⁰

Strategies for the prevention and treatment of cardiotoxicities

Pharmacological interventions

In patients with high baseline risk for cardiotoxicity, pre-existing risk factors (Table 2) should be identified and strictly controlled, and prophylactic cardioprotective medication against drug-induced cardiotoxicity should be considered as warranted.^{3,80} Recommendations for the use of cardioprotective pharmacotherapies in patients with cancer vary across different guidelines.^{3,24,80} The ESMO guidelines recommend initiation of cardioprotective treatments (ACE inhibitors, ARBs and/or beta-blockers) in patients receiving cardiotoxic therapy who exhibit a decrease in LVEF, a decrease in GLS, or an elevation in cardiac troponin, with a statin being considered in those with existing coronary artery disease (CAD).²⁴ ASCO guidelines recommend dexrazoxane for prevention of cardiotoxicity in patients planning to receive high-dose anthracyclines (e.g. doxorubicin ≥ 250 mg/m²).⁸⁰ The data were deemed insufficient to make formal recommendations regarding other cardioprotective strategies (e.g. ACE inhibitors, beta-blockers, ARBs and statins). Guidance from the ESC suggests the use of cardioprotective drugs (ACE inhibitors, beta-blockers, ARBs) in patients with pre-existing clinical HF or significant LV dysfunction at baseline, and the initiation of cardioprotection in patients with a troponin increase during treatment with high-dose anthracycline regimens.³ Patients with anthracycline-related or idiopathic cardiomyopathy treated with optimized HF therapy have been shown to have similar mortality rates, which suggests that these patients should be treated with current guideline-directed therapies.⁹⁵ Dexrazoxane is the only drug formally approved for the prevention of anthracycline cardiotoxicity; however, both the US Food and Drug Administration and the European Medicines Agency recommend using dexrazoxane only in breast cancer patients with prior high-dose anthracycline and candidates for continued anthracycline-based therapy.³ Children who are candidates for high-dose anthracycline can receive dexrazoxane starting from the first anthracycline dose. Meta-analyses of clinical trial data assessing the efficacy of cardioprotective interventions in patients with cancer are shown in Table 3.^{37,96–99}

The prevention and management of CV conditions in patients with cancer should generally follow published guidelines for specific conditions, such as HF,^{100,101} hypertension,^{102,103} AF,^{104–106} and

venous thromboembolism (VTE).^{107–109} However, there are some specific considerations, and contraindications such as drug interactions, to be aware of in patients with cancer.

Patients receiving anthracyclines, HER2 inhibitors and TKIs, or undergoing radiotherapy, have a high risk for the development or worsening of LV dysfunction and HF. ESC guidelines for the diagnosis and treatment of acute and chronic HF in the general population recommend pre- and post-therapy assessment of LVEF.¹⁰⁰ In general, the pharmacological treatments recommended for the general population of patients with symptomatic HF with reduced LVEF can be used in patients with cancer. These include ACE inhibitors, beta-blockers and certain diuretics if required. Recommendations to prevent the development or worsening of HF in asymptomatic patients include the use of ACE inhibitors and beta-blockers, and management of risk factors (Table 2), such as hypertension, dyslipidaemia, smoking, alcohol use and obesity. In patients with cardiac dysfunction caused by high-dose anthracycline, early treatment with ACE inhibitors and beta-blockers, possibly in combination, has been shown to be effective in the full, or at least partial, recovery of cardiac function.¹¹⁰ More recent studies using lower contemporary anthracycline doses have shown more modest effects.¹¹¹ A retrospective study suggested that sacubitril–valsartan could improve echocardiographic functional and structural parameters, biomarker levels and symptomatic status compared with baseline.¹¹² Sacubitril–valsartan was also effective in recovering LVEF in a long-term childhood cancer survivor who developed severe HF some 30 years after anthracycline exposure.¹¹³ In patients with cancer receiving anthracyclines, dexrazoxane may be useful but its use is limited by the aforesaid prescribing restrictions (Table 3).

Hypertension has been reported in up to 35% of patients receiving TKI therapy and may occur within the first months after the initiation of therapy.^{9,103} For this reason, the 2018 ESC/European Society of Hypertension (ESH) guidelines for the management of arterial hypertension recommend weekly monitoring of blood pressure during the first cycle of cancer therapy and at least every 2–3 weeks thereafter.¹⁰³ Patients who develop hypertension ($\geq 140/90$ mmHg), or an increase in diastolic blood pressure of ≥ 20 mmHg should initiate or optimize antihypertensive therapy with ACE inhibitors, ARBs, calcium channel blockers or combination therapy. The calcium channel blockers diltiazem and verapamil should be avoided because they block the CYP3A4 isoenzyme that is involved in the metabolism of TKIs, such as sorafenib and sunitinib, which can lead to increased drug levels.¹¹⁴

Cancer therapies have been associated with AF rates of up to 20% of patients.⁸ Guidelines for the management of AF in the general population provide no specific recommendations for patients with cancer.^{104–106} However, cancer is recognized as a risk factor for bleeding in patients receiving anticoagulation therapy.¹⁰⁴ In the general population, oral anticoagulation is recommended in patients with AF at risk for stroke. Contraindications for the use of therapeutic anticoagulants in patients with cancer include active major bleeding, liver failure and severe bleeding disorders.¹⁰⁹ Drug interactions with concomitant potent P-glycoprotein or CYP3A4 inhibitors or inducers are common

Table 3 Summary of data from meta-analyses of cardioprotective interventions against drug-induced cardiotoxicity for cancer patients

Study	Cancer treatment	Cardioprotective intervention	Results (95% CI)
Li et al. 2020 ⁹⁶ Network meta-analysis (7 studies, n = 628)	Anthracyclines, trastuzumab, taxanes, platinum agents, others	ACEi vs. PBO ACEi vs. control	LVEF MD 6.79 (2.11–11.48) MD 7.76 (2.64–12.88)
Fang et al. 2020 ⁹⁷ Meta-analysis (9 studies, n = 1095) (5 studies; n = 799) (4 studies; n = 647)	Anthracyclines ± trastuzumab	ACEi/ARB vs. PBO	LVEF MD 4.24 (1.53–6.95; P = 0.002) Chemotherapy-related cardiotoxicity ^a RR 0.63 (0.30–1.31; P = 0.22) Hypotension RR 3.94 (95% CI 1.42–10.90; P = 0.008)
Li et al. 2020 ⁹⁶ Network meta-analysis (9 studies, n = 722)	Anthracyclines, trastuzumab, taxanes, platinum agents, others	Beta-blockers vs. PBO	LVEF MD 4.00 (0.87–7.14)
Huang et al. 2019 ⁹⁸ Meta-analysis (5 studies, n = 495)	Anthracyclines	Beta-blockers vs. PBO	LVEF MD 1.74 (–0.18 to 3.66; P = 0.08) Clinically overt cardiotoxicity ^a OR 0.42 (0.20–0.89; P = 0.02)
Wang et al. 2020 ⁹⁹ Meta-analysis (3 studies, n = 1465)	Chemotherapy	DOACs vs. PBO	VTE RR 0.53 (0.36–0.78; P = 0.001) Pulmonary embolism RR 0.50 (0.28–0.89; P = 0.02)
Macedo et al. 2019 ³⁷ Meta-analysis (9 studies, n = 2177)	Anthracyclines	Dexrazoxane vs. PBO or no cardioprotective intervention	HF RR 0.19 (0.09–0.40; P < 0.001) Cardiac events RR 0.36 (0.27–0.49; P < 0.001)
Li et al. 2020 ⁹⁶ Network meta-analysis (2 studies, n = 91)	Anthracyclines	Statins vs. control	LVEF MD 8.35 (1.11–15.59)

ACEi, angiotensin-converting enzyme inhibitor; ARB, angiotensin II receptor blocker; CI, confidence interval; DOAC, direct oral anticoagulant (e.g. rivaroxaban, apixaban, edoxaban, dabigatran); HF, heart failure; LVEF, left ventricular ejection fraction; MD, mean difference; OR, odds ratio; PBO, placebo; RR, risk ratio; VTE, venous thromboembolism.

^aDefinitions used by included studies: LVEF reduction ≥ 10 –20%, LVEF decreased to < 40 –55%, chemotherapy interrupted as a result of cardiotoxicity, and cardiomyopathy.

with non-vitamin K oral anticoagulants (NOACs). In addition, ibuprofen causes platelet dysfunction, which can result in a higher risk for bleeding.⁵⁴ Drug–drug interactions that can increase plasma exposure to ibuprofen may therefore increase bleeding risk.^{54,115}

For rhythm or rate control, first- and second-line drug treatments include a variety of drugs such as dronedarone, flecainide, propafenone, amiodarone, ibutilide, beta-blockers, diltiazem, verapamil and digoxin.¹⁰⁴ Therapy is recommended after careful evaluation of patients in the general population and those with underlying CVD.¹⁰⁴ These drugs can interact with TKIs and other cancer therapies, resulting in increased concentrations of either the CV medication or the TKI.¹¹⁴ Increased QT interval has been reported and electrophysiologic actions by antiarrhythmic drugs

may be pro-arrhythmic and cause bradycardia and ventricular tachyarrhythmias (e.g. torsades de pointes). Cancer patients in whom therapy with antiarrhythmic drugs or anticancer drugs associated with QT prolongation is initiated should be monitored with ECGs and serum electrolytes to avoid hypokalaemia according to guidelines (Table 4).^{3,24,80}

Cancer is a well-recognized predisposing factor for VTE, but it is also a risk factor for major bleeding with oral anticoagulation.¹⁰⁷ The ASCO guidelines for the prevention and treatment of VTE in patients with cancer recommend thromboprophylaxis in all hospitalized patients, and selected high-risk outpatients, including low-molecular-weight heparin (LMWH) and some NOACs.^{108,109} In particular, in the context of thalidomide- or lenalidomide-based regimens for multiple myeloma, thromboprophylaxis with LMWH

Table 4 Summary of recommendations for baseline and long-term monitoring of cardiotoxicities in patients with cancer

Who to screen	When and how
<p>ASCO guidelines⁸⁰</p> <ul style="list-style-type: none"> • Patients with clinical signs or symptoms suggestive of cardiac dysfunction • Asymptomatic patients at increased risk for cardiac dysfunction 	<ul style="list-style-type: none"> • Echocardiogram • CMR or MUGA if echocardiogram is not available or not feasible • Serum cardiac biomarkers (troponins, natriuretic peptides) or echocardiography-derived strain imaging plus routine diagnostic imaging • Routine surveillance imaging • Echocardiogram, 6 and 12 months after completion of cancer therapy • CMR or MUGA if echocardiogram is not available or not technically feasible • No recommendations on frequency and duration of surveillance in patients who have no evidence of cardiac dysfunction on a 6-12-month post-treatment echocardiogram
<p>ESMO guidelines²⁴</p> <ul style="list-style-type: none"> • Any patient on potentially cardiotoxic therapy • High-risk patients (pre-existing CVD) or those receiving high-dose cardiotoxic therapy (e.g. anthracycline) • Patients scheduled to receive cancer therapy associated with HF or LV dysfunction 	<ul style="list-style-type: none"> • ECG, including QTc at baseline • Cardiac biomarkers: hs-cardiac troponins (TnI or TnT), BNP or NT-proBNP at baseline and periodically thereafter (3–6 weeks or before each cycle) • Reassessment of LV function based on cumulative anthracycline dose • Imaging evaluation of LVEF and diastolic function at baseline • Baseline and serial blood pressure monitoring • Periodic cardiac physical examination, cardiac biomarkers and/or cardiac imaging
<p>ESC guidance³</p> <ul style="list-style-type: none"> • All patients receiving cancer therapy • Patients with a history of QT prolongation, cardiac disease, bradycardia, thyroid dysfunction, electrolyte abnormalities • Patients with severe hypertension • Patients treated with pyrimidine analogues or at risk for myocardial ischaemia • Patients receiving radiotherapy 	<ul style="list-style-type: none"> • Assessment of CAD based on history, age, and gender • 12-lead electrocardiogram and QTc interval at baseline and during treatment • Blood pressure at baseline and periodically during treatment • Frequency of surveillance depends on patient and treatment characteristics • Monitor with repeated 12-lead electrocardiogram • Close monitoring and evaluation of adherence to antihypertensive drugs • Echocardiography (3D preferred) to monitor for myocardial ischaemia and to estimate LVEF and LV volumes before, during and after treatment • Exact interval is not established, but should be repeated during follow-up to confirm recovery, or detect irreversible LV dysfunction • Adults and survivors of childhood cancers exposed to chest radiotherapy should be offered lifelong surveillance

3D, three-dimensional; ASCO, American Society of Clinical Oncology; BNP, B-type natriuretic peptide; CAD, coronary artery disease; CMR, cardiac magnetic resonance; CVD, cardiovascular disease; ECG, electrocardiography; ESC, European Society of Cardiology; ESMO, European Society for Medical Oncology; HF, heart failure; hs-TnI or TnT, high-sensitivity cardiac troponins (I or T); LV, left ventricular; LVEF, left ventricular ejection fraction; MUGA, multi-gated acquisition; NT-proBNP, N-terminal pro-B-type natriuretic peptide.

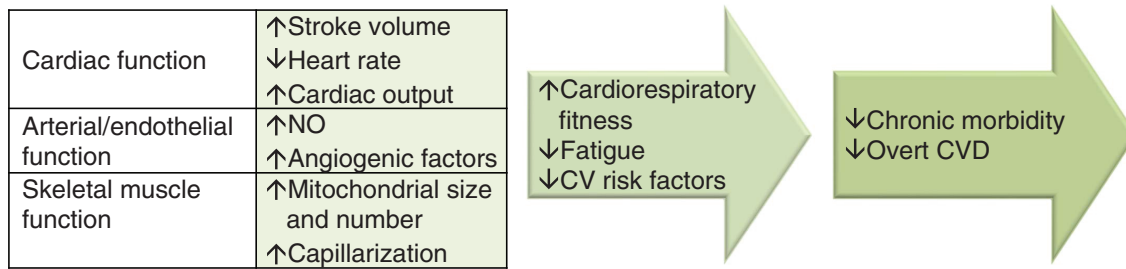


Figure 2 Effects of exercise training on multisystem toxicities.^{125,131–133} CV, cardiovascular; CVD, cardiovascular disease; NO, nitric oxide.

should be offered to higher-risk patients, and either aspirin or LMWH to lower-risk patients.¹⁰⁹

Meta-analyses of the use of anticoagulation for the treatment of VTE in patients with cancer concluded that NOACs are more effective, but are associated with a higher risk for bleeding compared with vitamin K antagonists and LMWHs.^{116,117} However, data evolve and the recently completed CARAVAGGIO trial showed that oral apixaban was non-inferior to dalteparin for the treatment of cancer-associated VTE and did not increase the risk for major bleeding.¹¹⁸ Possible interactions of apixaban with CYP3A4 and P-glycoprotein substrates/inhibitors should nonetheless be considered.¹¹⁹

There are additional considerations in the management of CV toxicities in older patients, including comorbidity (multiple diseases), frailty (vulnerability to adverse outcomes), and disability (difficulty or dependency in carrying out activities essential to independent living).¹²⁰ Therapy should be tailored to physiological status, with consideration of a patient's life expectancy independently of any cancer, organ function, performance score, comorbidity and quality of life. Patients assessed as fit may be more suitable and willing to undergo curative cancer therapies, despite cardiotoxicities, whereas the priority for those who are unfit or frail may be to achieve a balance between efficacy and tolerability, or palliative therapy with minimal toxicity. Alternative or reduced-intensity regimens may be needed, and the mechanisms of drug elimination and metabolism become more important.¹²¹ For this patient group, there is a need for collaboration between not only the cardiology and oncology specialties, but also geriatrics.¹²²

Exercise and lifestyle interventions

Patients receiving cancer therapies demonstrate significant and persistent declines in cardiorespiratory fitness (CRF) levels [e.g. peak oxygen consumption (VO_{2peak})].^{123–125} Poor CRF levels have been associated with a greater symptom burden (fatigue, impaired health-related quality of life),¹²⁴ increased incidence of treatment-related toxicities (both acute and chronic),¹²⁶ and increased risk for both cancer-related and all-cause mortality.¹²⁷ Chemotherapy, particularly anthracycline-based therapy, may cause up to 10–30 years of physiological ageing, in terms of a decline in VO_{2peak} , compared with healthy control subjects.^{123,128}

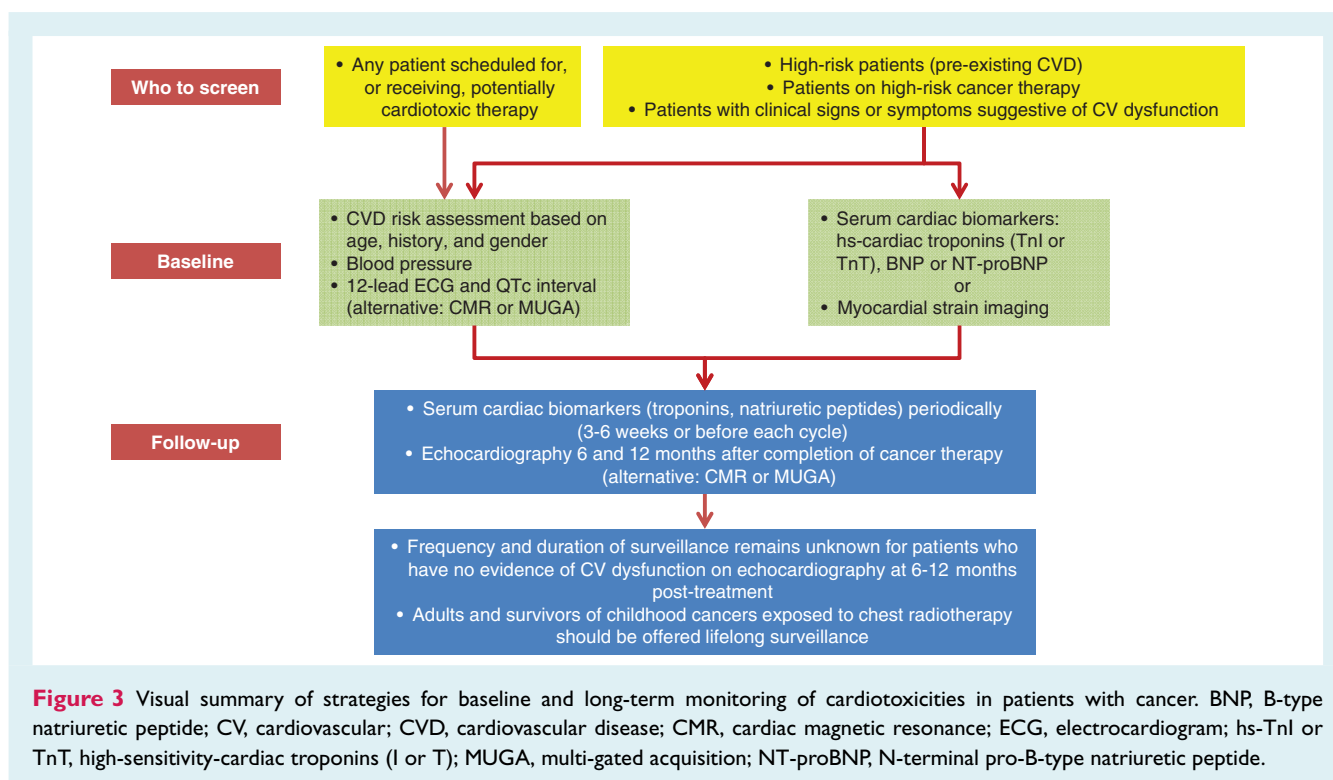
The toxicities of anticancer therapies extend beyond the heart to affect the entire CV–skeletal muscle axis and involve effects such as cognitive impairment, immune dysfunction, anaemia, GI events, skeletal muscle atrophy and bone demineralization.^{129,130} Evidence suggests that exercise training to improve CRF levels in patients with cancer can lead to multi-system improvements (Figure 2).^{125,131–133} Numerous observational studies in cancer patients have demonstrated that self-reported exercise is associated with significant reductions in morbidity and all-cause mortality, even after controlling for traditional risk factors.^{131,132} There is also growing evidence from randomized exercise intervention studies. A meta-analysis of 48 randomized controlled trials including over 3600 patients with adult-onset cancers found that exercise is an effective adjunctive therapy to improve CRF.¹³⁴ However, few studies have assessed the effects of exercise on CV endpoints beyond CRF.¹²⁹

Exercise training is an important element of cardiac rehabilitation programmes. Programmes should be tailored to the individual patient, and should include aerobic and resistance exercise, warm-up and cool-down activities, and flexibility/stretching exercises.¹²⁵ These programmes should also include lifestyle interventions, such as nutrition counselling and weight management, smoking cessation and psychosocial interventions.¹²⁵

Long-term follow-up of cancer survivors

Table 4 summarizes current recommendations regarding testing strategies for the early identification and long-term monitoring of patients with cancer receiving potentially cardiotoxic therapies.^{3,24,80} Figure 3 provides a visual summary of the strategies for baseline and long-term CV monitoring in patients with cancer.^{3,24,80}

Data from multiple registries of survivors of childhood cancer have shown an elevated risk for the development of CV events during long-term follow-up compared with that in the general population (Table 5).^{4,135–138} Chemotherapy and radiotherapy at a young age appeared to accelerate the ageing process in survivors of childhood cancer, accelerating the onset of age-related cognitive impairments, physical impairments and fatigue.¹³⁹ In one registry, 24-year-old survivors had the same cumulative incidence



of grade 3–5 health conditions (including CV conditions) as their 50-year-old siblings.¹³⁹

An international harmonized guideline has been developed to provide recommendations for cardiomyopathy surveillance in survivors of childhood cancer.¹⁴⁰ Echocardiography is the recommended surveillance modality, and CMR and MUGA are considered reasonable alternatives. Biomarkers are recommended in conjunction with imaging studies, but not as a sole strategy in patients in whom cardiomyopathy is suspected. Surveillance beginning within 2 years after therapy, and repeated every 5 years thereafter, is recommended in patients treated with >250 mg doxorubicin equivalents/m². Surveillance is also recommended or deemed reasonable in patients treated with lower anthracycline doses with and without chest radiation, respectively.

Finally, important questions remain around the issue of whether patients who have received cardiotoxic medications should be monitored by oncologists, cardiologists or primary care physicians. Here, dedicated cardio-oncology services become critical, especially for patients who may have been exposed at younger ages, and have an extended remaining life expectancy. For older patients, geriatricians with expertise in patient-centred rather than organ- or disease-specific approaches may need to play a larger role.¹²²

Future directions

Unmet needs: research opportunities and strategies for cardio-oncology

Some of the ongoing unmet needs that the field of cardio-oncology will need to address are summarized in Table 6. The optimal

monitoring strategy, including frequency and modality, remains unclear. As Table 4 shows, guidelines provide inconsistent or only tentative recommendations for long-term surveillance. For example, the ASCO guidelines recommend that the frequency of surveillance is determined by clinicians based on clinical judgement and patient circumstances.⁸⁰ The ESC guidance states that the exact interval is not established, and the frequency of surveillance depends on patient and treatment characteristics.³ In addition, current recommendations are mainly specific to patients treated with anthracyclines, with or without trastuzumab or chest radiation, and further stratified by anthracycline dose (e.g. <250 mg/m² or >250 mg²).^{80,140} For patients receiving any of the many newer oncology agents, limited firm recommendations exist. Clinical trial data are needed to define the impacts of different surveillance strategies on both CV and oncological clinical outcomes, as well as their relative cost-effectiveness.⁸⁰ A retrospective review of 600 early-stage breast cancer patients found that baseline echocardiography for CV screening before anthracycline- or trastuzumab-based therapy rarely identified abnormalities that impacted treatment plans, and few CV events occurred during follow-up (average of 4 years).¹⁴¹ The data suggested that baseline CV testing may have limited utility in young patients with no history of cardiac disease and may not be cost-effective at a population level. This highlights the importance of evaluating monitoring strategies in a controlled trial setting.

Randomized clinical trials specifically designed to assess the prevention and management of adverse CV effects of cancer therapy are needed. Generally, CV trials have excluded patients with comorbidities such as cancer, particularly those receiving cancer therapy. Similarly, oncology trial designs focus on cancer treatment

Table 5 Summary of registries reporting long-term risk of cardiac outcomes in childhood cancer survivors treated with chemotherapy or radiotherapy

Registry (n-value)	Patient population at assessment, median (range)	Frequency of cardiac events
CCSS ⁴ (n = 10 724)	5-year survivors Age 33.7 years (11–59) Follow-up 25.6 years (7.4–39.3)	<i>Cumulative incidence at age 45 years</i> CAD (grade ≥ 3): 5.3% (95% CI 4.4–6.1) HF (grade ≥ 3): 4.8% (95% CI 4.1–5.6)
SJLIFE ¹³⁵ (n = 1807)	10-year survivors Age 31 years (18–65) Follow-up 23 years (10–48)	<i>Prevalence</i> LVEF <50%: 5.8% Systolic dysfunction detected by GLS: 31.8%
BCCSS ¹³⁶ (n = 34 489)	5-year survivors Age, mean 29.6 (5.5–85.6) Follow-up, mean 18.0 (0.0–68.7)	<i>Standardized mortality ratios</i> Overall cardiac mortality: 3.4 (95% CI 2.9–3.9) Ischaemic heart disease: 2.5 (95% CI 2.0–3.1) Cardiomyopathy/HF: 5.9 (95% CI 4.4–7.7)
PanCareSurFup ¹³⁷ (n = 39 152)	5-year survivors Follow-up 20 years (12–28)	<i>Prevalence</i> ≥1 cardiac event ^a : 2.6%
DCOG-LATER ¹³⁸ (n = 5845)	5-year survivors Age 27.3 years (5.1–65.2) Follow-up 19.9 years (5.0–50.4)	<i>Cumulative 40 years risk</i> HF (grade ≥ 3): 4.4% (95% CI 3.4–5.5)

BCCSS, British Childhood Cancer Survivor Study; CAD, coronary heart disease; CCSS, Childhood Cancer Survivor Study; CI, confidence interval; DCOG-LATER, Dutch Childhood Oncology Group–Long-Term Effects After Childhood Cancer; GLS, global longitudinal strain; HF, heart failure; LVEF, left ventricular ejection fraction; PanCareSurFup, pan-European PanCare Childhood and Adolescent Cancer Survivor Care and Follow-Up Studies; SJLIFE, St Jude Lifetime Cohort Study.

^aPredominantly symptomatic HF, cardiac ischaemia, pericarditis, valvular disease, or arrhythmia.

Table 6 Unmet needs in cardio-oncology

- Well-structured, validated protocols for patient assessment and monitoring
- Clinical trials specifically designed to assess the prevention and management of adverse CV effects of cancer therapy including the timing and choice of intervention
- Clinical trials evaluating the use of CV drugs in patients receiving newer cancer treatments
- Harmonized and standardized definitions of cardiac endpoints in oncology trials
- Greater patient and physician education on the long-term risks, and need for follow-up
- Increased availability of cardio-oncology clinics
- Clinical trials of shared care models, and specially designed programmes, to successfully transition cancer survivors from oncology or cardio-oncology centres to primary care physicians

CV, cardiovascular.

efficacy and tend to exclude patients with CV risk factors, such as those with an LVEF of <50% and older populations. As a result, safety issues develop post-approval when cancer drugs are used in unselected patients from the general population. Integrated trials that concurrently evaluate CV and cancer outcomes, and assess the balance between the risk for asymptomatic cardiotoxicity or the worsening of pre-existing CVD, and the benefits of cancer therapy are required. The current trend towards the de-escalation of therapy through lower doses and shorter treatment durations, as

well as the use of more highly targeted drugs, may be further developed to improve the balance between benefit and CV risk.

Cardio-oncology trials must include sufficient numbers of patients at risk for potential adverse CV outcomes. Key elements of these trials should include rigorous baseline and ongoing assessment of CV risk using clinical and surrogate endpoints such as biomarkers and imaging.¹⁴² Cardioprotective agents should be introduced at different time-points during therapy, and adverse event data systematically collected. There is a need to harmonize and standardize the definitions of cardiac endpoints in oncology trials, as there continue to be issues in the comparison of data across different studies.¹⁴³ Cardiac outcomes, and the frequency and modality of cardiac monitoring to detect these outcomes, need to be precisely defined, using standard criteria across all trials. Criteria for adjudicating events also require to be standardized across trials. Whereas CV trials may be adequately powered for the CV outcomes of interest, oncological trials may be statistically under-powered to assess the true nature of CV adverse events.

Finally, longer follow-up beyond cancer therapy is critical, as demonstrated by the high lifetime risk for CV events among survivors of childhood and adult cancers treated with cardiotoxic therapies.^{3,4,24,80,135–138}

There is a particular need for randomized trials evaluating the use of CV drugs in patients receiving newer cancer treatments because much of the current body of evidence is based on data sourced from patients treated with anthracyclines. New MTAs cause CV toxicities with very different mechanisms of action and therefore the effects of CV medications may also differ. Moreover, accelerated clinical development and fast-track evaluation processes often lead to the approval of drugs of uncertain CV

liability and at unnecessarily high dosages, which paves the road to post-approval surges of CV toxicities.¹⁴⁴ Certain drugs are designed for long-term treatment of chronic diseases (such as chronic leukaemias), but the on-trial time from treatment to end of follow-up may be in the order of just a few months. Again, trials should incorporate longer follow-up and biomarker-driven CV prophylaxis should be evaluated.

Finally, there is a critical need for the greater education of both patients and physicians, and a greater number of cardio-oncology clinics. Long-term survivors of childhood cancers have high rates of risky health behaviours, including smoking (14%), drinking (15%) and physical inactivity (24%).¹⁴⁵ Long-term follow-up shows that those who are seen in specialized centres have a higher likelihood of receiving indicated echocardiograms for CV screening compared with those seen by primary care physicians (53% vs. 22%).^{145,146} Thus, there is a need for clinical trials of shared care models, and specifically designed programmes, to successfully transition the care of cancer survivors from oncology or cardio-oncology centres to primary care physicians. Most primary care physicians will see very few cancer survivors in their practice; therefore, there is an obvious need to develop methods of providing physicians with patient-specific education, perhaps through registries.

Academic, clinical and industry partnerships to facilitate clinical research

There is a need to include pharmaceutical industry partners early in the research design and drug development stages. Industry may be best suited to identify early cardiotoxicity signals in preclinical models and Phase 1 and 2 studies, which will help to incorporate adequate identification and monitoring protocols into clinical trials. As described earlier, 'hidden cardiotoxicity' should be considered in the preclinical phase of cancer drug development²⁰ and the cardiac safety of new drugs should be evaluated in cellular¹⁴⁷ and animal¹⁴⁸ models of CV risk factors.

Industry partners may also facilitate the design and conduct of trials that require multidisciplinary approaches for the evaluation of new MTAs.

Funding opportunities

Funding opportunities for cardio-oncology trials exist in the European Commission's Horizon Europe programme. Cancer is one of the five main mission areas in the €100 bn research and innovation programme proposed by the European Commission as the successor to the prior Horizon 2020 programme. Several studies relating to CVD and cancer were included in Horizon 2020, including 14 projects linking the two diseases and seven projects specifically examining cardiotoxicity. In the USA, the National Institutes of Health (NIH) has funded several initiatives to support the capture of CV endpoints in cancer trials.¹⁴² Researchers should engage in these opportunities.

Awareness

With the need for long-term follow-up, the field of cardio-oncology should expand substantially. The referral of patients to a

cardio-oncology clinic would ensure prompt evaluation of CV risk and optimization of CV therapy, and result in improvements in cardiac function, follow-up and high rates of continuation of cancer therapy.^{149,150} A survey conducted in 2020 of 104 centres in 35 countries around the world found that oncology patients with CV adverse effects were being cared for within a dedicated cardio-oncology unit in just 14% of centres.¹⁵¹ Care was provided jointly by both cardiologists and oncologists in 56% of responding centres, by cardiologists alone in 41%, and by oncologists alone in 3% of centres. In 60% of centres, cancer is not included in CV protocols as a risk factor, routine monitoring of long-term cancer survivors is not performed, and CV assessment is based on development of symptoms. This reinforces the call for more cardio-oncology units and increased education and awareness among both clinicians and patients. In the absence of an available cardio-oncology clinic, knowledgeable primary care physicians will have to be prepared to manage cancer patients during long-term follow-up, with referral to specialty care as needed.

In a health care environment of limited resources, there is a critical need to identify patients at increased risk, who warrant closer long-term follow-up. In addition, there is a need for increased awareness of the long-term CV risk among patients who receive cancer therapy, at all levels, including among specialists (e.g. oncologists, cardiologists and geriatricians), primary care physicians, industry, government and the general population. The need for increased awareness and education extends to patients themselves as many cancer survivors do not know they are at increased risk for CV morbidity and mortality as a result of their treatment. Advocacy groups such as the European Cancer Patient Coalition (ECPC) and ESC advocacy initiatives are helping to increase awareness throughout the care continuum. The ECPC is leading a Cancer Related Complications and Comorbidities Initiative with a primary focus on CV morbidity. The initiative is intended to raise awareness among European Union-based policymakers (European Parliament and Commission) on existing gaps in research and integrated care.

Registries, such as the EURObservational Registry Programme (EORP), also play an important role in identifying long-term CV outcomes, especially those that are uncommon. The EORP is a registry for CV and rare diseases. It uses an international protocol and shares data with the medical community, regulatory bodies and health care stakeholders. This allows for the comparison of data on the management of major CVDs globally, which can help improve patient care. The Cardiac Oncology Toxicity (COT) Registry was launched by the European Association of Cardiovascular Imaging/Heart Failure Association (EACVI/HFA) as an EORP multicentre registry of patients affected by breast cancer for assessment of cancer therapy-related cardiotoxicity.¹⁵² The goal of the registry is to provide information on outcomes of cardiotoxicities, to describe their time course in relation to chemotherapy, and to help design standards for the diagnosis, management and follow-up of these patients. However, there remains a need for additional dedicated cardio-oncology registries to identify and monitor cardiotoxicities, including the global linking of these registries. In 2018, the ESC created the Cardio-Oncology Council, which is tasked with bringing experts from different specialties to work together to better define the needs and problems associated

with the care of cardio-oncology patients.¹⁵³ Education, research and the development of best practice are among the tasks that will help to define a better future and quality of life for these patients.

Acknowledgements

This article was generated from discussions during a Cardiovascular Round Table (CRT) workshop organized in January 2020 by the European Society of Cardiology (ESC). The ESC CRT is a strategic forum for high-level dialogue between 20 industry companies (pharmaceutical, devices and diagnostics) and the ESC leadership to identify and discuss key strategic issues for the future of cardiovascular health in Europe.

The authors would like to thank Pauline Lavigne and Steven Portelance (unaffiliated, supported by the ESC) for their contributions to the writing and editing of this manuscript.

Conflict of interest: C.G. reports salary received as an employee of AstraZeneca, outside the submitted work. J.J.B. reports the receipt of personal fees as a speaker for Abbott and Edwards Lifescience, outside the submitted work. P.F. reports the receipt of grants from Semmelweis University and the Pharmahungary Group during the conduct of the study, is the founder and chief executive officer of the Pharmahungary Group, a group of research and development companies developing cardioprotective drug therapeutics and digital therapeutics related to drug safety, outside the submitted work, and reports an issued software copyright for www.mirnatarget.com, and a pending software copyright for www.vigilace.com. T.L.F. reports the receipt of personal fees from Janssen, Servier, Amgen, Philips, MSD and Daiichi Sankyo, outside the submitted work. C.P.G. reports his position as chair of the European Society of Cardiology EurObservational Research Programme Oversight Committee. T.O. reports the receipt of non-financial support from Novartis, grants and personal fees from Roche and Abbott, grants and stock from CardiNor, personal fees from Siemens and Bayer, and non-financial support from Singulex and SomaLogic, outside the submitted work. All other authors have nothing to disclose.

Appendix

Additional participants

Stephan Achenbach (ESC Board; University of Erlangen), Neeraja Balachander (Bristol-Myers Squibb), Anthony Chan (Pfizer), Jason Deeken (Philips), Christina Dimopoulou (ESC), Friedrich Fuchs (Siemens Healthineers), José Luis García López (AstraZeneca), Alexandra Goncalves (Philips), Christina Grundt (Boehringer-Ingelheim), Geeta Gulati (University of Oslo), Claudia Kaiser-Albers (MSD), Maciej Kostrubiec (European Medicines Agency; Medical University of Warsaw), Cecilia Linde (ESC Board; Karolinska University Hospital), Rosalinda Madonna (G. D'annunzio University), Alessandro Ortisi (Siemens Healthineers), Grzegorz Owsianik, European Commission, DG Research & Innovation), Giuseppe Rosano (St George's Hospital), Stefan Schröder (Bayer AG), Kerry Short (Philips), David Soergel (Novartis Pharma AG), Alphons Vincent (Medtronic), André Ziegler (Roche Diagnostics International Ltd).

References

1. Arnold M, Rutherford MJ, Bardot A, Ferlay J, Andersson TM, Myklebust TA, Tervonen H, Thursfield V, Ransom D, Shack L, Woods RR, Turner D, Leonfellner S, Ryan S, Saint-Jacques N, De P, McClure C, Ramanakumar AV, Stuart-Panko H, Engholm G, Walsh PM, Jackson C, Vernon S, Morgan E, Gavin A, Morrison DS, Huws DW, Porter G, Butler J, Bryant H, Currow DC, Hiom S, Parkin DM, Sasieni P, Lambert PC, Moller B, Soerjomataram I, Bray F. Progress in cancer survival, mortality, and incidence in seven high-income countries 1995–2014 (ICBP SURVMARK-2): a population-based study. *Lancet Oncol* 2019;**20**:1493–1505.
2. Pilleron S, Sarfati D, Janssen-Heijnen M, Vignat J, Ferlay J, Bray F, Soerjomataram I. Global cancer incidence in older adults, 2012 and 2035: a population-based study. *Int J Cancer* 2019;**144**:49–58.
3. Zamorano JL, Lancellotti P, Rodriguez Munoz D, Aboyans V, Asteggiano R, Galderisi M, Habib G, Lenihan DJ, Lip GYH, Lyon AR, Lopez Fernandez T, Mohty D, Piepoli MF, Tamargo J, Torbicki A, Suter TM; ESC Scientific Document Group. 2016 ESC Position Paper on cancer treatments and cardiovascular toxicity developed under the auspices of the ESC Committee for Practice Guidelines: the Task Force for cancer treatments and cardiovascular toxicity of the European Society of Cardiology (ESC). *Eur Heart J* 2016;**37**: 2768–2801.
4. Armstrong GT, Oeffinger KC, Chen Y, Kawashima T, Yasui Y, Leisenring W, Stovall M, Chow EJ, Sklar CA, Mulrooney DA, Mertens AC, Border W, Durand JB, Robison LL, Meacham LR. Modifiable risk factors and major cardiac events among adult survivors of childhood cancer. *J Clin Oncol* 2013;**31**: 3673–3680.
5. Moslehi JJ. Cardiovascular toxic effects of targeted cancer therapies. *N Engl J Med* 2016;**375**:1457–1467.
6. Campia U, Moslehi JJ, Amiri-Kordestani L, Barac A, Beckman JA, Chism DD, Cohen P, Groarke JD, Herrmann J, Reilly CM, Weintraub NL. Cardio-oncology: vascular and metabolic perspectives: a scientific statement from the American Heart Association. *Circulation* 2019;**139**:e579–e602.
7. Yeh ETH, Ewer MS, Moslehi J, Dlugosz-Danecka M, Banchs J, Chang HM, Minotti G. Mechanisms and clinical course of cardiovascular toxicity of cancer treatment I. *Oncology. Semin Oncol* 2019;**46**:397–402.
8. Yang X, Li X, Yuan M, Tian C, Yang Y, Wang X, Zhang X, Sun Y, He T, Han S, Chen G, Liu N, Gao Y, Hu D, Xing Y, Shang H. Anticancer therapy-induced atrial fibrillation: electrophysiology and related mechanisms. *Front Pharmacol* 2018;**9**:1058.
9. Shah CP, Moreb JS. Cardiotoxicity due to targeted anticancer agents: a growing challenge. *Ther Adv Cardiovasc Dis* 2019;**13**:1753944719843435.
10. Yeh ET, Tong AT, Lenihan DJ, Yusuf SW, Swafford J, Champion C, Durand JB, Gibbs H, Zafarmand AA, Ewer MS. Cardiovascular complications of cancer therapy: diagnosis, pathogenesis, and management. *Circulation* 2004;**109**: 3122–3131.
11. Brown JR, Moslehi J, O'Brien S, Ghia P, Hillmen P, Cymbalista F, Shanfelt TD, Fraser G, Rule S, Kipps TJ, Coutre S, Dilhuydy MS, Cramer P, Tedeschi A, Jaeger U, Dreyling M, Byrd JC, Howes A, Todd M, Vermeulen J, James DF, Clow F, Styles L, Valentino R, Wildgust M, Mahler M, Burger JA. Characterization of atrial fibrillation adverse events reported in ibrutinib randomized controlled registration trials. *Haematologica* 2017;**102**:1796–1805.
12. Mahmood SS, Fradley MG, Cohen JV, Nohria A, Reynolds KL, Heinzerling LM, Sullivan RJ, Damrongwatanasuk R, Chen CL, Gupta D, Kirchberger MC, Awadalla M, Hassan MZO, Moslehi JJ, Shah SP, Ganatra S, Thavendiranathan P, Lawrence DP, Groarke JD, Neilan TG. Myocarditis in patients treated with immune checkpoint inhibitors. *J Am Coll Cardiol* 2018;**71**:1755–1764.
13. Salem JE, Manouchehri A, Moey M, Lebrun-Vignes B, Bastarache L, Pariente A, Gobert A, Spano JP, Balko JM, Bonaca MP, Roden DM, Johnson DB, Moslehi JJ. Cardiovascular toxicities associated with immune checkpoint inhibitors: an observational, retrospective, pharmacovigilance study. *Lancet Oncol* 2018;**19**:1579–1589.
14. Hu JR, Florido R, Lipson EJ, Naidoo J, Ardehali R, Tocchetti CG, Lyon AR, Padera RF, Johnson DB, Moslehi J. Cardiovascular toxicities associated with immune checkpoint inhibitors. *Cardiovasc Res* 2019;**115**:854–868.
15. Varga ZV, Ferdinandy P, Liaudet L, Pacher P. Drug-induced mitochondrial dysfunction and cardiotoxicity. *Am J Physiol Heart Circ Physiol* 2015;**309**:H1453–H1467.
16. Desai MY, Windecker S, Lancellotti P, Bax JJ, Griffin BP, Cahlon O, Johnston DR. Prevention, diagnosis, and management of radiation-associated cardiac disease: JACC Scientific Expert Panel. *J Am Coll Cardiol* 2019;**74**:905–927.
17. Lancellotti P, Nkomo VT, Badano LP, Bergler-Klein J, Bogaert J, Davin L, Cosyns B, Coucke P, Dulgheru R, Edvardsson T, Gaemperli O, Galderisi M, Griffin B, Heidenreich PA, Nieman K, Plana JC, Port SC, Scherrer-Crosbie M,

- Schwartz RG, Sebag IA, Voigt JU, Wann S, Yang PC; European Society of Cardiology Working Groups on Nuclear Cardiology and Cardiac Computed Tomography and Cardiovascular Magnetic Resonance; American Society of Nuclear Cardiology; Society for Cardiovascular Magnetic Resonance; Society of Cardiovascular Computed Tomography. Expert consensus for multi-modality imaging evaluation of cardiovascular complications of radiotherapy in adults: a report from the European Association of Cardiovascular Imaging and the American Society of Echocardiography. *Eur Heart J Cardiovasc Imaging* 2013;**14**:721–740.
18. Halle M, Gabrielsen A, Paulsson-Berne G, Gahm C, Agardh HE, Farnebo F, Tornvall P. Sustained inflammation due to nuclear factor-kappa B activation in irradiated human arteries. *J Am Coll Cardiol* 2010;**55**:1227–1236.
 19. Herrmann J. Adverse cardiac effects of cancer therapies: cardiotoxicity and arrhythmia. *Nat Rev Cardiol* 2020;**17**:474–502.
 20. Ferdinandy P, Baczko I, Bencsik P, Giricz Z, Gorbe A, Pacher P, Varga ZV, Varro A, Schulz R. Definition of hidden drug cardiotoxicity: paradigm change in cardiac safety testing and its clinical implications. *Eur Heart J* 2019;**40**:1771–1777.
 21. Ameri P, Canepa M, Anker MS, Belenkov Y, Bergler-Klein J, Cohen-Solal A, Farmakis D, Lopez-Fernandez T, Lainscak M, Pudil R, Ruschitska F, Seferovic P, Filippatos G, Coats A, Suter T, Von Haehling S, Ciardiello F, de Boer RA, Lyon AR, Tocchetti CG. Heart Failure Association cardio-Oncology Study Group of the European Society of Cardiology. Cancer diagnosis in patients with heart failure: epidemiology, clinical implications and gaps in knowledge. *Eur J Heart Fail* 2018;**20**:879–887.
 22. Calvillo-Arguelles O, Jaiswal S, Shush LI, Moslehi JJ, Schimmer A, Barac A, Thavendiranathan P. Connections between clonal hematopoiesis, cardiovascular disease, and cancer: a review. *JAMA Cardiol* 2019;**4**:380–387.
 23. Chu TF, Rupnick MA, Kerkela R, Dallabrida SM, Zurakowski D, Nguyen L, Woulfe K, Pravda E, Cassiola F, Desai J, George S, Morgan JA, Harris DM, Ismail NS, Chen JH, Schoen FJ, Van den Abbeele AD, Demetri GD, Force T, Chen MH. Cardiotoxicity associated with tyrosine kinase inhibitor sunitinib. *Lancet* 2007;**370**:2011–2019.
 24. Curigliano G, Lenihan D, Fradley M, Ganatra S, Barac A, Blaes A, Herrmann J, Porter C, Lyon AR, Lancellotti P, Patel A, DeCara J, Mitchell J, Harrison E, Moslehi J, Witteles R, Calabro MG, Orecchia R, de Azambuja E, Zamorano JL, Krone R, Iakobishvili Z, Carver J, Armenian S, Ky B, Cardinale D, Cipolla CM, Dent S, Jordan K; ESMO Guidelines Committee. Management of cardiac disease in cancer patients throughout oncological treatment: ESMO consensus recommendations. *Ann Oncol* 2020;**31**:171–190.
 25. Breccia M, Carver JR, Szmít Z, Jurczak W, Salvatorelli E, Minotti G. Mechanisms and clinical course of cardiovascular toxicity of cancer treatment II. *Hematology. Semin Oncol* 2019;**46**:403–407.
 26. Mantarro S, Rossi M, Bonifazi M, D'Amico R, Blandizzi C, La Vecchia C, Negri E, Moja L. Risk of severe cardiotoxicity following treatment with trastuzumab: a meta-analysis of randomized and cohort studies of 29,000 women with breast cancer. *Intern Emerg Med* 2016;**11**:123–140.
 27. Garcia-Pavia P, Kim Y, Restrepo-Cordoba MA, Lunde IG, Wakimoto H, Smith AM, Toepfer CN, Getz K, Gorham J, Patel P, Ito K, Willcox JA, Arany Z, Li J, Owens AT, Govind R, Nunez B, Mazaika E, Bayes-Genis A, Walsh R, Finkelman B, Lupon J, Whiffin N, Serrano I, Midwinter W, Wilk A, Bardaji A, Ingold N, Buchan R, Tayal U, Pascual-Figal DA, de Marvao A, Ahmad M, Garcia-Pinilla JM, Pantazis A, Dominguez F, John Baksi A, O'Regan DP, Rosen SD, Prasad SK, Lara-Pezzi E, Provenzio M, Lyon AR, Alonso-Pulpon L, Cook SA, DePalma SR, Barton PJR, Aplenc R, Seidman JG, Ky B, Ware JS, Seidman CE. Genetic variants associated with cancer therapy-induced cardiomyopathy. *Circulation* 2019;**140**:31–41.
 28. Lyon AR, Dent S, Stanway S, Earl H, Brezden-Masley C, Cohen-Solal A, Tocchetti CG, Moslehi J, Groarke JD, Bergler-Klein J, Khoo V, Tan LL, Anker MS, von Haehling S, Maack C, Pudil R, Barac A, Thavendiranathan P, Ky B, Neilan TG, Belenkov Y, Rosen SD, Iakobishvili Z, Sverdlow AL, Hajjar LA, Macedo AVS, Manisty C, Ciardiello F, Farmakis D, De Boer RA, Skouri H, Suter TM, Cardinale D, Witteles RM, Fradley MG, Herrmann J, Cornell RF, Wechelaker A, Mauro MJ, Milojkovic D, de Lavallade H, Ruschitska F, Coats AJS, Seferovic PM, Chioncel O, Thum T, Bauersachs J, Andres MS, Wright DJ, Lopez-Fernandez T, Plummer C, Lenihan D. Baseline cardiovascular risk assessment in cancer patients scheduled to receive cardiotoxic cancer therapies: a position statement and new risk assessment tools from the Cardio-Oncology Study Group of the Heart Failure Association of the European Society of Cardiology in collaboration with the International Cardio-Oncology Society. *Eur J Heart Fail* 2020 May 28. <https://doi.org/10.1002/ehfj.1920>. Online ahead of print.
 29. Smith LA, Cornelius VR, Plummer CJ, Levitt G, Verrill M, Canney P, Jones A. Cardiotoxicity of anthracycline agents for the treatment of cancer: systematic review and meta-analysis of randomised controlled trials. *BMC Cancer* 2010;**10**:337.
 30. Banke A, Fosbol EL, Moller JE, Gislason GH, Andersen M, Bernsdorf M, Jensen MB, Schou M, Ejlersen B. Long-term effect of epirubicin on incidence of heart failure in women with breast cancer: insight from a randomized clinical trial. *Eur J Heart Fail* 2018;**20**:1447–1453.
 31. Feijen EAM, Leisenring WM, Stratton KL, Ness KK, van der Pal HJH, van Dalen EC, Armstrong GT, Aune GJ, Green DM, Hudson MM, Looen J, Oeffinger KC, Robison LL, Yasui Y, Kremer LCM, Chow EJ. Derivation of anthracycline and anthraquinone equivalence ratios to doxorubicin for late-onset cardiotoxicity. *JAMA Oncol* 2019;**5**:864–871.
 32. van Nimwegen FA, Schaapveld M, Janus CP, Krol AD, Petersen EJ, Raemaekers JM, Kok WE, Aleman BM, van Leeuwen FE. Cardiovascular disease after Hodgkin lymphoma treatment: 40-year disease risk. *JAMA Intern Med* 2015;**175**:1007–1017.
 33. Jacobse JN, Steggink LC, Sonke GS, Schaapveld M, Hummel YM, Steenbruggen TG, Lefrandt JD, Nuver J, Crijns APG, Aleman BMP, van der Meer P, Gietema JA, van Leeuwen FE. Myocardial dysfunction in long-term breast cancer survivors treated at ages 40–50 years. *Eur J Heart Fail* 2020;**22**:338–346.
 34. Cardinale D, Iacopo F, Cipolla CM. Cardiotoxicity of anthracyclines. *Front Cardiovasc Med* 2020;**7**:26.
 35. Lipshultz SE, Miller TL, Lipsitz SR, Neuberger DS, Dahlberg SE, Colan SD, Silverman LB, Henkel JM, Franco VI, Cushman LL, Asselin BL, Clavell LA, Athale U, Michon B, Laverdiere C, Schorin MA, Larsen E, Usmani N, Sallan SE; Dana-Farber Cancer Institute Acute Lymphoblastic Leukemia Consortium. Continuous versus bolus infusion of doxorubicin in children with ALL: long-term cardiac outcomes. *Pediatrics* 2012;**130**:1003–1011.
 36. van Dalen EC, Michiels EM, Caron HN, Kremer LC. Different anthracycline derivatives for reducing cardiotoxicity in cancer patients. *Cochrane Database Syst Rev* 2010:CD005006.
 37. Macedo A, Hajjar L, Lyon A, Nascimento B, Putzu A, Rossi L, Costa R, Landoni G, Nogueira-Rodrigues A, Ribeiro A. Efficacy of dexrazoxane in preventing anthracycline cardiotoxicity in breast cancer. *JACC CardioOncol* 2019;**1**:68–79.
 38. Cardinale D, Colombo A, Sandri MT, Lamantia G, Colombo N, Civelli M, Martinelli G, Veglia F, Fiorentini C, Cipolla CM. Prevention of high-dose chemotherapy-induced cardiotoxicity in high-risk patients by angiotensin-converting enzyme inhibition. *Circulation* 2006;**114**:2474–2481.
 39. Jones S, Holmes FA, O'Shaughnessy J, Blum JL, Vukelja SJ, McIntyre KJ, Pippen JE, Bordelon JH, Kirby RL, Sandbach J, Hyman WJ, Richards DA, Mennel RG, Boehm KA, Meyer WG, Asmar L, Mackey D, Riedel S, Muss H, Savin MA. Docetaxel with cyclophosphamide is associated with an overall survival benefit compared with doxorubicin and cyclophosphamide: 7-year follow-up of US Oncology Research Trial 9735. *J Clin Oncol* 2009;**27**:1177–1183.
 40. Sara JD, Kaur J, Khodadadi R, Rehman M, Lobo R, Chakrabarti S, Herrmann J, Lerman A, Grothey A. 5-fluorouracil and cardiotoxicity: a review. *Ther Adv Med Oncol* 2018;**10**:1758835918780140.
 41. Henricks LM, Opdam FL, Beijnen JH, Cats A, Schellens JHM. DPYD genotype-guided dose individualization to improve patient safety of fluoropyrimidine therapy: call for a drug label update. *Ann Oncol* 2017;**28**:2915–2922.
 42. Salvatorelli E, Menna P, Cantalupo E, Chello M, Covino E, Wolf FI, Minotti G. The concomitant management of cancer therapy and cardiac therapy. *Biochim Biophys Acta* 2015;**1848**:2727–2737.
 43. Keramida K, Farmakis D, Bingcang J, Sulemane S, Sutherland S, Bingcang RA, Ramachandran K, Tzavara C, Charalampopoulos G, Filippidis D, Kouris N, Nihoyannopoulos P. Longitudinal changes of right ventricular deformation mechanics during trastuzumab therapy in breast cancer patients. *Eur J Heart Fail* 2019;**21**:529–535.
 44. Rushton M, Lima I, Tuna M, Johnson C, Ivars J, Pritchard K, Hawken S, Dent S. Impact of stopping trastuzumab in early breast cancer: a population-based study in Ontario, Canada. *J Natl Cancer Inst* 2020 Apr 28. <https://doi.org/10.1093/jnci/djaa054>. Online ahead of print.
 45. Gong IY, Verma S, Yan AT, Ko DT, Earle CC, Tomlinson GA, Trudeau ME, Krahn MD, Krzyzanowska MK, Brezden-Masley CB, Gavra S, Peacock S, Chan KK. Long-term cardiovascular outcomes and overall survival of early-stage breast cancer patients with early discontinuation of trastuzumab: a population-based study. *Breast Cancer Res Treat* 2016;**157**:535–544.
 46. European Medicines Agency. Herceptin (trastuzumab). Summary of product characteristics. Roche Registration GmbH, Germany, August 2010. https://www.ema.europa.eu/en/documents/product-information/herceptin-epar-product-information_en.pdf (10 June 2020).
 47. Hussain Y, Drill E, Dang CT, Liu JE, Steingart RM, Yu AF. Cardiac outcomes of trastuzumab therapy in patients with HER2-positive breast cancer and reduced left ventricular ejection fraction. *Breast Cancer Res Treat* 2019;**175**:239–246.
 48. Lynce F, Barac A, Geng X, Dang C, Yu AF, Smith KL, Gallagher C, Pohlmann PR, Nunes R, Herbolzheimer P, Warren R, Srichai MB, Hofmeyer M, Cunningham A,

- Timothee P, Asch FM, Shajahan-Haq A, Tan MT, Isaacs C, Swain SM. Prospective evaluation of the cardiac safety of HER2-targeted therapies in patients with HER2-positive breast cancer and compromised heart function: the SAFE-HEaRt study. *Breast Cancer Res Treat* 2019;**175**:595–603.
49. Salvatorelli E, Menna P, Minotti G. Pharmacology of cardio-oncology. In: Ewer M, ed. *Cancer and the Heart*, 3rd edn. Shelton, CT: PMPH USA Lt; 2017. pp 11–46.
 50. Moslehi JJ, Deininger M. Tyrosine kinase inhibitor-associated cardiovascular toxicity in chronic myeloid leukemia. *J Clin Oncol* 2015;**33**:4210–4218.
 51. Ghatalia P, Morgan CJ, Je Y, Nguyen PL, Trinh QD, Choueiri TK, Sonpavde G. Congestive heart failure with vascular endothelial growth factor receptor tyrosine kinase inhibitors. *Crit Rev Oncol Hematol* 2015;**94**:228–237.
 52. Ghatalia P, Je Y, Kaymakcalan MD, Sonpavde G, Choueiri TK. QTc interval prolongation with vascular endothelial growth factor receptor tyrosine kinase inhibitors. *Br J Cancer* 2015;**112**:296–305.
 53. European Medicines Agency. Taspina (nilotinib). Summary of product characteristics. Novartis Pharma GmbH, Germany, November 2012. https://www.ema.europa.eu/en/documents/product-information/herceptin-epar-product-information_en.pdf (10 June 2020).
 54. Ganatra S, Sharma A, Shah S, Chaudhry GM, Martin DT, Neilan TG, Mahmood SS, Barac A, Groarke JD, Hayek SS, Dani S, Venesy D, Patten R, Nohria A. Ibrutinib-associated atrial fibrillation. *JACC Clin Electrophysiol* 2018;**4**:1491–1500.
 55. Lampson BL, Yu L, Glynn RJ, Barrientos JC, Jacobsen ED, Banerji V, Jones JA, Walewska R, Savage KJ, Michaud GF, Moslehi JJ, Brown JR. Ventricular arrhythmias and sudden death in patients taking ibrutinib. *Blood* 2017;**129**:2581–2584.
 56. Dickerson T, Wiczter T, Waller A, Philippon J, Porter K, Haddad D, Guha A, Rogers KA, Bhat S, Byrd JC, Woyach JA, Awan F, Addison D. Hypertension and incident cardiovascular events following ibrutinib initiation. *Blood* 2019;**134**:1919–1928.
 57. Salem JE, Manouchehri A, Bretagne M, Lebrun-Vignes B, Groarke JD, Johnson DB, Yang T, Reddy NM, Funck-Brentano C, Brown JR, Roden DM, Moslehi JJ. Cardiovascular toxicities associated with ibrutinib. *J Am Coll Cardiol* 2019;**74**:1667–1678.
 58. Johnson DB, Balko JM, Compton ML, Chalkias S, Gorham J, Xu Y, Hicks M, Puzanov I, Alexander MR, Bloomer TL, Becker JR, Slosky DA, Phillips EJ, Pilkinton MA, Craig-Owens L, Kola N, Plautz G, Reshef DS, Deutsch JS, Deering RP, Olenchok BA, Lichtman AH, Roden DM, Seidman CE, Korahnik JJ, Seidman JG, Hoffman RD, Taube JM, Diaz LA Jr, Anders RA, Sosman JA, Moslehi JJ. Fulminant myocarditis with combination immune checkpoint blockade. *N Engl J Med* 2016;**375**:1749–1755.
 59. Moslehi JJ, Salem JE, Sosman JA, Lebrun-Vignes B, Johnson DB. Increased reporting of fatal immune checkpoint inhibitor-associated myocarditis. *Lancet* 2018;**391**:933.
 60. Ganatra S, Neilan TG. Immune checkpoint inhibitor-associated myocarditis. *Oncologist* 2018;**23**:879–886.
 61. Lyon AR, Yousaf N, Battisti NML, Moslehi J, Larkin J. Immune checkpoint inhibitors and cardiovascular toxicity. *Lancet Oncol* 2018;**19**:e447–e458.
 62. Johnson DB, Beckermann KE, Wang DY. Immune checkpoint inhibitor therapy in patients with autoimmune disease. *Oncology (Williston Park)* 2018;**32**:190–194.
 63. Postow MA, Sidlow R, Hellmann MD. Immune-related adverse events associated with immune checkpoint blockade. *N Engl J Med* 2018;**378**:158–168.
 64. Agrawal N, Khunger A, Vachhani P, Colvin TA, Hattoum A, Spangenthal E, Curtis AB, Dy GK, Ernstoff MS, Puzanov I. Cardiac toxicity associated with immune checkpoint inhibitors: case series and review of the literature. *Case Rep Oncol* 2019;**12**:260–276.
 65. Zhang L, Awadalla M, Mahmood SS, Nohria A, Hassan MZO, Thuny F, Zlotoff DA, Murphy SP, Stone JR, Golden DLA, Alvi RM, Rokicki A, Jones-O'Connor M, Cohen JV, Heinzerling LM, Mulligan C, Armanious M, Barac A, Forrester BJ, Sullivan RJ, Kwong RY, Yang EH, Damrongwatanasuk R, Chen CL, Gupta D, Kirchnerberger MC, Moslehi JJ, Coelho-Filho OR, Ganatra S, Rizvi MA, Sahni G, Tocchetti CG, Mercurio V, Mahmoudi M, Lawrence DP, Reynolds KL, Weinsaft JW, Baksi AJ, Ederhy S, Groarke JD, Lyon AR, Fradley MG, Thavendiranathan P, Neilan TG. Cardiovascular magnetic resonance in immune checkpoint inhibitor-associated myocarditis. *Eur Heart J* 2020;**41**:1733–1743.
 66. Caforio AL, Pankuweit S, Arbustini E, Basso C, Gimeno-Blanes J, Felix SB, Fu M, Helio T, Heymans S, Jahns R, Klingel K, Linhart A, Maisch B, McKenna W, Mogensen J, Pinto YM, Ristic A, Schultheiss HP, Seggewiss H, Tavazzi L, Thiene G, Yilmaz A, Charron P, Elliott PM; European Society of Cardiology Working Group on Myocardial and Pericardial Diseases. Current state of knowledge on aetiology, diagnosis, management, and therapy of myocarditis: a position statement of the European Society of Cardiology Working Group on Myocardial and Pericardial Diseases. *Eur Heart J* 2013;**34**:2636–2648, 2648a–2648d.
 67. Salem JE, Allenbach Y, Vozy A, Brechot N, Johnson DB, Moslehi JJ, Kerneis M. Abatacept for severe immune checkpoint inhibitor-associated myocarditis. *N Engl J Med* 2019;**380**:2377–2379.
 68. Nielsen KM, Offersen BV, Nielsen HM, Vaage-Nilsen M, Yusuf SW. Short and long term radiation induced cardiovascular disease in patients with cancer. *Clin Cardiol* 2017;**40**:255–261.
 69. Cheng YJ, Nie XY, Ji CC, Lin XX, Liu LJ, Chen XM, Yao H, Wu SH. Long-term cardiovascular risk after radiotherapy in women with breast cancer. *J Am Heart Assoc* 2017;**6**:e005633.
 70. Boekel NB, Jacobse JN, Schaapveld M, Hoening MJ, Gietema JA, Duane FK, Taylor CW, Darby SC, Hauptmann M, Seynaeve CM, Baaijens MHA, Sonke GS, Rutgers EJ, Russell NS, Aleman BMP, van Leeuwen FE. Cardiovascular disease incidence after internal mammary chain irradiation and anthracycline-based chemotherapy for breast cancer. *Br J Cancer* 2018;**119**:408–418.
 71. Boekel NB, Duane FK, Jacobse JN, Hauptmann M, Schaapveld M, Sonke GS, Gietema JA, Hoening MJ, Seynaeve CM, Maas A, Darby SC, Aleman BMP, Taylor CW, van Leeuwen FE. Heart failure after treatment for breast cancer. *Eur J Heart Fail* 2020;**22**:366–374.
 72. da Silva R. Effects of radiotherapy in coronary artery disease. *Curr Atheroscler Rep* 2019;**21**:50.
 73. Mansouri I, Allodji RS, Hill C, El-Fayeh C, Pein F, Diallo S, Schwartz B, Vu-Bezin G, Veres C, Souchard V, Dumas A, Bolle S, Thomas-Teinturier C, Pacquement H, Munzer M, Bondiau PY, Berchery D, Fresneau B, Oberlin O, Diallo I, De Vathaire F, Haddy N. The role of irradiated heart and left ventricular volumes in heart failure occurrence after childhood cancer. *Eur J Heart Fail* 2019;**21**:509–518.
 74. Taylor C, McGale P, Bronnum D, Correa C, Cutter D, Duane FK, Gigante B, Jensen MB, Lorenzen E, Rahimi K, Wang Z, Darby SC, Hall P, Ewertz M. Cardiac structure injury after radiotherapy for breast cancer: cross-sectional study with individual patient data. *J Clin Oncol* 2018;**36**:2288–2296.
 75. Darby SC, Ewertz M, McGale P, Bennet AM, Blom-Goldman U, Bronnum D, Correa C, Cutter D, Gagliardi G, Gigante B, Jensen MB, Nisbet A, Peto R, Rahimi K, Taylor C, Hall P. Risk of ischemic heart disease in women after radiotherapy for breast cancer. *N Engl J Med* 2013;**368**:987–998.
 76. van den Bogaard VA, Ta BD, van der Schaaf A, Bouma AB, Middag AM, Bantema-Joppe EJ, van Dijk LV, van Dijk-Peters FB, Martijn LA, de Bock GH, Burgerhof JG, Gietema JA, Langendijk JA, Maduro JH, Crijns AP. Validation and modification of a prediction model for acute cardiac events in patients with breast cancer treated with radiotherapy based on three-dimensional dose distributions to cardiac substructures. *J Clin Oncol* 2017;**35**:1171–1178.
 77. Roos CTG, van den Bogaard VAB, Greuter MJW, Vliegghart R, Schuit E, Langendijk JA, van der Schaaf A, Crijns APG, Maduro JH. Is the coronary artery calcium score associated with acute coronary events in breast cancer patients treated with radiotherapy? *Radiother Oncol* 2018;**126**:170–176.
 78. Plummer C, Steingart RM, Jurczak W, Iakobishvili Z, Lyon AR, Plastaras JP, Minotti G. Treatment specific toxicities: hormones, antihormones, radiation therapy. *Semin Oncol* 2019;**46**:414–420.
 79. Langendijk JA, Lambin P, De Ruyscher D, Widder J, Bos M, Verheij M. Selection of patients for radiotherapy with protons aiming at reduction of side effects: the model-based approach. *Radiother Oncol* 2013;**107**:267–273.
 80. Armenian SH, Lacchetti C, Barac A, Carver J, Constine LS, Denduluri N, Dent S, Douglas PS, Durand JB, Ewer M, Fabian C, Hudson M, Jessup M, Jones LV, Ky B, Mayer EL, Moslehi J, Oeffinger K, Ray K, Ruddy K, Lenihan D. Prevention and monitoring of cardiac dysfunction in survivors of adult cancers: American Society of Clinical Oncology clinical practice guideline. *J Clin Oncol* 2017;**35**:893–911.
 81. Michel L, Mincu RI, Mahabadi AA, Settelmeier S, Al-Rashid F, Rassaf T, Totzeck M. Troponins and brain natriuretic peptides for the prediction of cardiotoxicity in cancer patients: a meta-analysis. *Eur J Heart Fail* 2019;**22**:350–361.
 82. Minotti G, Menna P, Calabrese V, Greco C, Armento G, Annibaldi O, Marchesi F, Salvatorelli E, Reggiardo G. Pharmacology of ranolazine versus common cardiovascular drugs in patients with early diastolic dysfunction induced by anthracyclines or nonanthracycline chemotherapeutics: a phase 2b minitrial. *J Pharmacol Exp Ther* 2019;**370**:197–205.
 83. Cardinale D, Ciceri F, Latini R, Franzosi MG, Sandri MT, Civelli M, Cucchi G, Menatti E, Mangiacavalli M, Cavina R, Barbieri E, Gori S, Colombo A, Curigliano G, Salvatici M, Rizzo A, Ghisoni F, Bianchi A, Falci C, Aquilina M, Rocca A, Monopoli A, Milandri C, Rossetti G, Bregni M, Sicuro M, Malossi A, Nassiados D, Verusio C, Giordano M, Staszewsky L, Barlera S, Nicolis EB, Magnoli M, Masson S, Cipolla CM; ICOS-ONE Study Investigators. Anthracycline-induced cardiotoxicity: a multicentre randomised trial comparing two strategies for guiding prevention with enalapril: the International CardioOncology Society-one trial. *Eur J Cancer* 2018;**94**:126–137.
 84. Gulati G, Heck SL, Rosjo H, Ree AH, Hoffmann P, Hagve TA, Norseth J, Gravdehaug B, Steine K, Geisler J, Omland T. Neurohormonal blockade and circulating cardiovascular biomarkers during anthracycline therapy in breast cancer patients: results from the PRADA (Prevention of Cardiac Dysfunction

- During Adjuvant Breast Cancer Therapy) study. *J Am Heart Assoc* 2017;**6**:e006513.
85. Avila MS, Ayub-Ferreira SM, de Barros Wanderley MR Jr, das Dores Cruz F, Goncalves Brandao SM, Rigaud VOC, Higuchi-Dos-Santos MH, Hajjar LA, Kalil Filho R, Hoff PM, Sahade M, Ferrari MSM, de Paula Costa RL, Mano MS, Bittencourt Viana Cruz CB, Abduch MC, Lofrano Alves MS, Guimaraes GV, Issa VS, Bittencourt MS, Bocchi EA. Carvedilol for prevention of chemotherapy-related cardiotoxicity: the CECCY trial. *J Am Coll Cardiol* 2018;**71**:2281–2290.
 86. Walker V, Crijs A, Langendijk J, Spoor D, Vliedgenhart R, Combs SE, Mayinger M, Eraso A, Guedea F, Fiuza M, Constantino S, Tamarat R, Laurier D, Ferrieres J, Mousseaux E, Cardis E, Jacob S. Early detection of cardiovascular changes after radiotherapy for breast cancer: protocol for a European multicenter prospective cohort study (MEDIRAD EARLY HEART Study). *JMIR Res Protoc* 2018;**7**:e178.
 87. Thavendiranathan P, Grant AD, Negishi T, Plana JC, Popovic ZB, Marwick TH. Reproducibility of echocardiographic techniques for sequential assessment of left ventricular ejection fraction and volumes: application to patients undergoing cancer chemotherapy. *J Am Coll Cardiol* 2013;**61**:77–84.
 88. Walker J, Bhullar N, Fallah-Rad N, Lytwyn M, Golan M, Fang T, Summers AR, Singal PK, Barac I, Kirkpatrick ID, Jassal DS. Role of three-dimensional echocardiography in breast cancer: comparison with two-dimensional echocardiography, multiple-gated acquisition scans, and cardiac magnetic resonance imaging. *J Clin Oncol* 2010;**28**:3429–3436.
 89. Armstrong GT, Plana JC, Zhang N, Srivastava D, Green DM, Ness KK, Daniel Donovan F, Metzger ML, Arevalo A, Durand JB, Joshi V, Hudson MM, Robison LL, Flamm SD. Screening adult survivors of childhood cancer for cardiomyopathy: comparison of echocardiography and cardiac magnetic resonance imaging. *J Clin Oncol* 2012;**30**:2876–2884.
 90. Plana JC, Thavendiranathan P, Bucciarelli-Ducci C, Lancellotti P. Multi-modality imaging in the assessment of cardiovascular toxicity in the cancer patient. *JACC Cardiovasc Imaging* 2018;**11**:1173–1186.
 91. Oikonomou EK, Kokkinidis DG, Kampaktis PN, Amir EA, Marwick TH, Gupta D, Thavendiranathan P. Assessment of prognostic value of left ventricular global longitudinal strain for early prediction of chemotherapy-induced cardiotoxicity: a systematic review and meta-analysis. *JAMA Cardiol* 2019;**4**:1007–1018.
 92. Awadalla M, Mahmood S, Groarke J, Hassan M, Nohria A, Rokicki A, Murphy S, Mercaldo N, Zhang L, Zlotoff D, Reynolds K, Alvi R, Banerji D, Liu S, Heinzerling L, Jones-O'Connor M, Bakar R, Cohen J, Kirchberger M, Sullivan R, Gupta D, Mulligan C, Shah S, Ganatra S, Rizvi M, Sahni G, Tocchetti C, Lawrence D, Mahmoudi M, Devereux R, Forrester B, Mandawat A, Lyon A, Chen C, Barac A, Hung J, Thavendiranathan P, Picard M, Thuny F, Ederhy S, Michael GF, Neilan T. Global longitudinal strain and cardiac events in patients with immune checkpoint inhibitor-related myocarditis. *J Am Coll Cardiol* 2020;**75**:467–478.
 93. Negishi K, Negishi T, Haluska BA, Hare JL, Plana JC, Marwick TH. Use of speckle strain to assess left ventricular responses to cardiotoxic chemotherapy and cardioprotection. *Eur Heart J Cardiovasc Imaging* 2014;**15**:324–331.
 94. Negishi T, Thavendiranathan P, Negishi K, Marwick TH; SUCCOUR Investigators. Rationale and design of the strain surveillance of chemotherapy for improving cardiovascular outcomes: the SUCCOUR trial. *JACC Cardiovasc Imaging* 2018;**11**:1098–1105.
 95. Fornaro A, Olivetto I, Rigacci L, Ciaccheri M, Tomberli B, Ferrantini C, Coppini R, Girolami F, Mazarrotto F, Chiostrri M, Milli M, Marchionni N, Castelli G. Comparison of long-term outcome in anthracycline-related versus idiopathic dilated cardiomyopathy: a single centre experience. *Eur J Heart Fail* 2018;**20**:898–906.
 96. Li X, Li Y, Zhang T, Xiong X, Liu N, Pang B, Ruan Y, Gao Y, Shang H, Xing Y. Role of cardioprotective agents on chemotherapy-induced heart failure: a systematic review and network meta-analysis of randomized controlled trials. *Pharmacol Res* 2020;**151**:104577.
 97. Fang K, Zhang Y, Liu W, He C. Effects of angiotensin-converting enzyme inhibitor/angiotensin receptor blocker use on cancer therapy-related cardiac dysfunction: a meta-analysis of randomized controlled trials. *Heart Fail Rev* 2020 Jan 3. <https://doi.org/10.1007/s10741-019-09906-x>. Online ahead of print.
 98. Huang S, Zhao Q, Yang ZG, Diao KY, He Y, Shi K, Shen MT, Fu H, Guo YK. Protective role of beta-blockers in chemotherapy-induced cardiotoxicity: a systematic review and meta-analysis of carvedilol. *Heart Fail Rev* 2019;**24**:325–333.
 99. Wang Y, Wang M, Ni Y, Liang Z. Direct oral anticoagulants for thromboprophylaxis in ambulatory patients with cancer. *Hematology* 2020;**25**:63–70.
 100. Ponikowski P, Voors AA, Anker SD, Bueno H, Cleland JGF, Coats AJS, Falk V, Gonzalez-Juanatey JR, Harjola VP, Jankowska EA, Jessup M, Linde C, Nihoyannopoulos P, Parissis JT, Pieske B, Riley JP, Rosano GMC, Ruelope LM, Ruschitzka F, Rutten FH, van der Meer P; ESC Scientific Document Group. 2016 ESC Guidelines for the diagnosis and treatment of acute and chronic heart failure: the Task Force for the diagnosis and treatment of acute and chronic heart failure of the European Society of Cardiology (ESC). Developed with the special contribution of the Heart Failure Association (HFA) of the ESC. *Eur J Heart Fail* 2016;**18**:891–975.
 101. Yancy CW, Jessup M, Bozkurt B, Butler J, Casey DE Jr, Colvin MM, Drazner MH, Filippatos GS, Fonarow GC, Givertz MM, Hollenberg SM, Lindenfeld J, Masouli FA, McBride PE, Peterson PN, Stevenson LW, Westlake C. 2017 ACC/AHA/HFSA FOCUSED UPDATE of the 2013 ACCF/AHA guideline for the management of heart failure: a report of the American College of Cardiology/American Heart Association Task Force on Clinical Practice Guidelines and the Heart Failure Society of America. *J Am Coll Cardiol* 2017;**70**:776–803.
 102. Whelton PK, Carey RM, Aronow WS, Casey DE Jr, Collins KJ, Dennison Himmelfarb C, DePalma SM, Gidding S, Jamerson KA, Jones DW, MacLaughlin EJ, Muntner P, Ovbigele B, Smith SC Jr, Spencer CC, Stafford RS, Taler SJ, Thomas RJ, Williams KA Sr, Williamson JD, Wright JT Jr. 2017 ACC/AHA/AAPA/ABC/ACPM/AGS/APHA/ASH/ASPC/NMA/PCNA guideline for the prevention, detection, evaluation, and management of high blood pressure in adults: a report of the American College of Cardiology/American Heart Association Task Force on Clinical Practice Guidelines. *Hypertension* 2018;**71**:e13–e115.
 103. Williams B, Mancia G, Spiering W, Agabiti Rosei E, Azizi M, Burnier M, Clement DL, Coca A, de Simone G, Dominiczak A, Kahan T, Mahfoud F, Redon J, Ruilope L, Zanchetti A, Kerins M, Kjeldsen SE, Kreutz R, Laurent S, Lip GYH, McManus R, Narkiewicz K, Ruschitzka F, Schmieder RE, Shlyakhto E, Tsioufis C, Aboyans V, Desormais I; ESC Scientific Document Group. 2018 ESC/ESH Guidelines for the management of arterial hypertension. *Eur Heart J* 2018;**39**:3021–3104.
 104. Kirchhof P, Benussi S, Kotecha D, Ahlsson A, Atar D, Casadei B, Castella M, Diener HC, Heidbuchel H, Hendriks J, Hindricks G, Manolis AS, Oldgren J, Popescu BA, Schotten U, Van Putte B, Vardas P; ESC Scientific Documents Group. 2016 ESC guidelines for the management of atrial fibrillation developed in collaboration with EACTS. *Eur Heart J* 2016;**37**:2893–2962.
 105. January CT, Wann LS, Calkins H, Chen LY, Cigarroa JE, Cleveland JC Jr, Ellnor PT, Ezekowitz MD, Field ME, Furie KL, Heidenreich PA, Murray KT, Shea JB, Tracy CM, Yancy CW. 2019 AHA/ACC/HRS focused update of the 2014 AHA/ACC/HRS guideline for the management of patients with atrial fibrillation: a report of the American College of Cardiology/American Heart Association Task Force on Clinical Practice Guidelines and the Heart Rhythm Society in collaboration with the Society of Thoracic Surgeons. *Circulation* 2019;**140**:e125–e151.
 106. Lip GYH, Banerjee A, Boriani G, Chiang CE, Fargo R, Freedman B, Lane DA, Ruff CT, Turakhia M, Werring D, Patel S, Moores L. Antithrombotic therapy for atrial fibrillation: CHEST guideline and expert panel report. *Chest* 2018;**154**:1121–1201.
 107. Konstantinides SV, Meyer G, Becattini C, Bueno H, Geersing GJ, Harjola VP, Huisman MV, Humbert M, Jennings CS, Jimenez D, Kucher N, Lang IM, Lankeit M, Lorusso R, Mazzolai L, Meneveau N, Ni Ainle F, Prandoni P, Pruszczyk P, Righini M, Torbicki A, Van Belle E, Zamorano JL; ESC Scientific Document Group. 2019 ESC Guidelines for the diagnosis and management of acute pulmonary embolism developed in collaboration with the European Respiratory Society (ERS). *Eur Heart J* 2020;**41**:543–603.
 108. Lyman GH, Bohlke K, Khorana AA, Kuderer NM, Lee AY, Arcelus JJ, Balaban EP, Clarke JM, Flowers CR, Francis CW, Gates LE, Kakkar AK, Key NS, Levine MN, Liebman HA, Tempero MA, Wong SL, Somerfield MR, Falanga A; American Society of Clinical Oncology. Venous thromboembolism prophylaxis and treatment in patients with cancer: American Society of Clinical Oncology clinical practice guideline update 2014. *J Clin Oncol* 2015;**33**:654–656.
 109. Key NS, Khorana AA, Kuderer NM, Bohlke K, Lee AY, Arcelus JJ, Wong SL, Balaban EP, Flowers CR, Francis CW, Gates LE, Kakkar AK, Levine MN, Liebman HA, Tempero MA, Lyman GH, Falanga A. Venous thromboembolism prophylaxis and treatment in patients with cancer: ASCO clinical practice guideline update. *J Clin Oncol* 2020;**38**:496–520.
 110. Cardinale D, Colombo A, Lamantia G, Colombo N, Civelli M, De Giacomo G, Rubino M, Veglia F, Fiorentini C, Cipolla CM. Anthracycline-induced cardiomyopathy: clinical relevance and response to pharmacologic therapy. *J Am Coll Cardiol* 2010;**55**:213–220.
 111. Gulati G, Heck SL, Ree AH, Hoffmann P, Schulz-Menger J, Fagerland MW, Gravdehaug B, von Knobelsdorff-Brenkenhoff F, Bratland A, Storås TH, Hagve TA, Rosjo H, Steine K, Geisler J, Omland T. Prevention of cardiac dysfunction during adjuvant breast cancer therapy (PRADA): a 2 x 2 factorial, randomized, placebo-controlled, double-blind clinical trial of candesartan and metoprolol. *Eur Heart J* 2016;**37**:1671–1680.
 112. Martin-Garcia A, Lopez-Fernandez T, Mitroi C, Chaparro-Munoz M, Moliner P, Martin-Garcia AC, Martinez-Monzonis A, Castro A, Lopez-Sendon JL, Sanchez PL. Effectiveness of sacubitril-valsartan in cancer patients with heart failure. *ESC Heart Fail* 2020;**7**:763–767.

113. Camilli M, Del Buono M, Crea F, Minotti G. Acute heart failure 29years after treatment for childhood cancer. *JACC CardioOncol* 2020;**2**:316–319.
114. Haouala A, Widmer N, Montemurro M, Buclin T, Decosterd L. Cardiovascular drug interactions with tyrosine kinase inhibitors. *Cardiovasc Med* 2010;**13**:147–154.
115. Boriani G, Corradini P, Cuneo A, Falanga A, Foa R, Gaidano G, Ghia PP, Martelli M, Marasca R, Massaia M, Mauro FR, Minotti G, Molica S, Montillo M, Pinto A, Tedeschi A, Vitolo U, Zinzani PL. Practical management of ibrutinib in the real life: focus on atrial fibrillation and bleeding. *Hematol Oncol* 2018;**36**:624–632.
116. Kirkkilesis GI, Kakkos SK, Tsolakis IA. A systematic review and meta-analysis of the efficacy and safety of anticoagulation in the treatment of venous thromboembolism in patients with cancer. *Eur J Vasc Endovasc Surg* 2019;**57**:685–701.
117. Rossel A, Robert-Ebadi H, Combesure C, Groscurin O, Stirnemann J, Addeo A, Garin N, Agoritsas T, Reny JL, Marti C. Anticoagulant therapy for acute venous thrombo-embolism in cancer patients: a systematic review and network meta-analysis. *PLoS One* 2019;**14**:e0213940.
118. Agnelli G, Becattini C, Meyer G, Munoz A, Huisman MV, Connors JM, Cohen A, Bauersachs R, Brenner B, Torbicki A, Suevo M, Lambert C, Gussoni G, Campanini M, Fontanella A, Vescovo G, Verso M; Caravaggio Investigators. Apixaban for the treatment of venous thromboembolism associated with cancer. *N Engl J Med* 2020;**382**:1599–1607.
119. Short NJ, Connors JM. New oral anticoagulants and the cancer patient. *Oncologist* 2014;**19**:82–93.
120. Fried LP, Ferrucci L, Darer J, Williamson JD, Anderson G. Untangling the concepts of disability, frailty, and comorbidity: implications for improved targeting and care. *J Gerontol A Biol Sci Med Sci* 2004;**59**:255–263.
121. Shanafelt T. Treatment of older patients with chronic lymphocytic leukemia: key questions and current answers. *Hematology Am Soc Hematol Educ Program* 2013;**2013**:158–167.
122. Nguyen KL, Alrezk R, Mansourian PG, Naeim A, Rettig MB, Lee CC. The crossroads of geriatric cardiology and cardio-oncology. *Curr Geriatr Rep* 2015;**4**:327–337.
123. Jones LW, Courneya KS, Mackey JR, Muss HB, Pituskin EN, Scott JM, Hornsby WE, Coan AD, Herndon JE II, Douglas PS, Haykowsky M. Cardiopulmonary function and age-related decline across the breast cancer survivorship continuum. *J Clin Oncol* 2012;**30**:2530–2537.
124. Wood WA, Deal AM, Reeve BB, Abernethy AP, Basch E, Mitchell SA, Shatten C, Hie Kim Y, Whitley J, Serody JS, Shea T, Battaglini C. Cardiopulmonary fitness in patients undergoing hematopoietic SCT: a pilot study. *Bone Marrow Transplant* 2013;**48**:1342–1349.
125. Gilchrist SC, Barac A, Ades PA, Alfano CM, Franklin BA, Jones LW, La Gerche A, Ligibel JA, Lopez G, Madan K, Oeffinger KC, Salamone J, Scott JM, Squires RW, Thomas RJ, Treat-Jacobson DJ, Wright JS; American Heart Association Exercise, Cardiac Rehabilitation and Secondary Prevention Committee of the Council on Clinical Cardiology; Council on Cardiovascular and Stroke Nursing; Council on Peripheral Vascular Disease. Cardio-oncology rehabilitation to manage cardiovascular outcomes in cancer patients and survivors: a scientific statement from the American Heart Association. *Circulation* 2019;**139**:e997–e1012.
126. Jones LW, Haykowsky M, Pituskin EN, Jendzjowsky NG, Tomczak CR, Haennel RG, Mackey JR. Cardiovascular reserve and risk profile of postmenopausal women after chemoendocrine therapy for hormone receptor-positive operable breast cancer. *Oncologist* 2007;**12**:1156–1164.
127. Groarke JD, Payne DL, Claggett B, Mehra MR, Gong J, Caron J, Mahmood SS, Hainer J, Neilan TG, Partridge AH, Di Carli M, Jones LW, Nohria A. Association of post-diagnosis cardiorespiratory fitness with cause-specific mortality in cancer. *Eur Heart J Qual Care Clin Outcomes* 2020 Mar 13. <https://doi.org/10.1093/ehjqcco/qcaa015>. Online ahead of print.
128. Hornsby WE, Douglas PS, West MJ, Kenjale AA, Lane AR, Schwitzer ER, Ray KA, Herndon JE II, Coan A, Gutierrez A, Hornsby KP, Hamilton E, Wilke LG, Kimmick GG, Peppercorn JM, Jones LW. Safety and efficacy of aerobic training in operable breast cancer patients receiving neoadjuvant chemotherapy: a phase II randomized trial. *Acta Oncol* 2014;**53**:65–74.
129. Scott JM, Nilsen TS, Gupta D, Jones LW. Exercise therapy and cardiovascular toxicity in cancer. *Circulation* 2018;**137**:1176–1191.
130. Scott JM, Dolan LB, Norton L, Charles JB, Jones LW. Multisystem toxicity in cancer: lessons from NASA's countermeasures program. *Cell* 2019;**179**:1003–1009.
131. Jones LW, Habel LA, Weltzien E, Castillo A, Gupta D, Kroenke CH, Kwan ML, Quesenberry CP Jr, Scott J, Sternfeld B, Yu A, Kushi LH, Caan BJ. Exercise and risk of cardiovascular events in women with nonmetastatic breast cancer. *J Clin Oncol* 2016;**34**:2743–2749.
132. Scott JM, Li N, Liu Q, Yasui Y, Leisenring W, Nathan PC, Gibson T, Armenian SH, Nilsen TS, Oeffinger KC, Ness KK, Adams SC, Robison LL, Armstrong GT, Jones LW. Association of exercise with mortality in adult survivors of childhood cancer. *JAMA Oncol* 2018;**4**:1352–1358.
133. Lakoski SG, Eves ND, Douglas PS, Jones LW. Exercise rehabilitation in patients with cancer. *Nat Rev Clin Oncol* 2012;**9**:288–296.
134. Scott JM, Zabor EC, Schwitzer E, Koelwyn GJ, Adams SC, Nilsen TS, Moskowitz CS, Matsoukas K, Iyengar NM, Dang CT, Jones LW. Efficacy of exercise therapy on cardiorespiratory fitness in patients with cancer: a systematic review and meta-analysis. *J Clin Oncol* 2018;**36**:2297–2305.
135. Armstrong GT, Joshi VM, Ness KK, Marwick TH, Zhang N, Srivastava D, Griffin BP, Grimm RA, Thomas J, Phelan D, Collier P, Krull KR, Mulrooney DA, Green DM, Hudson MM, Robison LL, Plana JC. Comprehensive echocardiographic detection of treatment-related cardiac dysfunction in adult survivors of childhood cancer: results from the St Jude Lifetime Cohort Study. *J Am Coll Cardiol* 2015;**65**:2511–2522.
136. Fidler MM, Reulen RC, Henson K, Kelly J, Cutter D, Levitt GA, Froebisher C, Winter DL, Hawkins MM; British Childhood Cancer Survivor Study Steering Group. Population-based long-term cardiac-specific mortality among 34 489 five-year survivors of childhood cancer in Great Britain. *Circulation* 2017;**135**:951–963.
137. Grabow D, Kaiser M, Hjorth L, Byrne J, Alessi D, Allodji RS, Bagnasco F, Bardi E, Bautz A, Bright CJ, de Vathaire F, EAM F, Garwicz S, Hagberg O, Haupt R, Hawkins MM, Jakab Z, LCM K, Kuehni CE, Kuonen R, Lahteenmaki PM, Reulen RC, Ronckers CM, Saerndote C, Vu-Bezin G, Wesenberg F, Wiebe T, Winter DL, Winther JF, Zaletel LZ, Kaatsch P; PanCareSurFup Consortium. The PanCareSurFup cohort of 83,333 five-year survivors of childhood cancer: a cohort from 12 European countries. *Eur J Epidemiol* 2018;**33**:335–349.
138. Feijen E, Font-Gonzalez A, van der Pal HJH, Kok WEM, Geskus RB, Ronckers CM, Bresters D, van Dalen EC, van Dulmen-den Broeder E, van den Berg MH, van der Heiden-van der Loo M, van den Heuvel-Eibrink MM, van Leeuwen FE, Loonen JJ, Neggers S, Versluys ABB, Tissing WJE, Kremer LCM; DCOG-LATER Study Group. Risk and temporal changes of heart failure among 5-year childhood cancer survivors: a DCOG-LATER study. *J Am Heart Assoc* 2019;**8**:e009122.
139. Armstrong GT, Kawashima T, Leisenring W, Stratton K, Stovall M, Hudson MM, Sklar CA, Robison LL, Oeffinger KC. Aging and risk of severe, disabling, life-threatening, and fatal events in the childhood cancer survivor study. *J Clin Oncol* 2014;**32**:1218–1227.
140. Armenian SH, Hudson MM, Mulder RL, Chen MH, Constine LS, Dwyer M, Nathan PC, Tissing WJ, Shankar S, Sieswerda E, Skinner R, Steinberger J, van Dalen EC, van der Pal H, Wallace WH, Levitt G, Kremer LC; International Late Effects of Childhood Cancer Guideline Harmonization Group. Recommendations for cardiomyopathy surveillance for survivors of childhood cancer: a report from the International Late Effects of Childhood Cancer Guideline Harmonization Group. *Lancet Oncol* 2015;**16**:e123–e136.
141. Truong SR, Barry WT, Moslehi JJ, Baker EL, Mayer EL, Partridge AH. Evaluating the utility of baseline cardiac function screening in early-stage breast cancer treatment. *Oncologist* 2016;**21**:666–670.
142. Minasian LM, Dimond E, Davis M, Adhikari B, Fagerstrom R, Fabian C, Floyd J, Unger JM, Douglas PS, Mustian KM. The evolving design of NIH-funded cardio-oncology studies to address cancer treatment-related cardiovascular toxicity. *JACC CardioOncol* 2019;**1**:105–113.
143. Dent SF, Suter TM, Lopez-Fernandez T, Opolski G, Menna P, Minotti G. Cardio-oncology in clinical studies and real life. *Semin Oncol* 2019;**46**:421–425.
144. Marchesi F, Salvatorelli E, Renzi D, Mengarelli A, Minotti G, Menna P. Efficacy and safety of low dose ponatinib in a case of Ph-positive acute lymphoblastic leukaemia. *Br J Haematol* 2019;**187**:e15–e17.
145. Nathan PC, Ford JS, Henderson TO, Hudson MM, Emmons KM, Casillas JN, Lown EA, Ness KK, Oeffinger KC. Health behaviors, medical care, and interventions to promote healthy living in the Childhood Cancer Survivor Study cohort. *J Clin Oncol* 2009;**27**:2363–2373.
146. Nathan PC, Greenberg ML, Ness KK, Hudson MM, Mertens AC, Mahoney MC, Gurney JG, Donaldson SS, Leisenring WM, Robison LL, Oeffinger KC. Medical care in long-term survivors of childhood cancer: a report from the childhood cancer survivor study. *J Clin Oncol* 2008;**26**:4401–4409.
147. Truitt R, Mu A, Corbin EA, Vite A, Brandimarto J, Ky B, Margulies KB. Increased afterload augments sunitinib-induced cardiotoxicity in an engineered cardiac microtissue model. *JACC Basic Transl Sci* 2018;**3**:265–276.
148. Melendez GC, Jordan JH, D'Agostino RB Jr, Lesnfsky EJ, Hundley WG. Accelerated left ventricular interstitial collagen deposition after receiving doxorubicin in hypertension. *J Am Coll Cardiol* 2018;**72**:1555–1557.

149. Lancellotti P, Suter TM, Lopez-Fernandez T, Galderisi M, Lyon AR, van der Meer P, Cohen Solal A, Zamorano JL, Jerusalem G, Moonen M, Aboyans V, Bax JJ, Asteggiano R. Cardio-oncology services: rationale, organization, and implementation. *Eur Heart J* 2019;**40**:1756–1763.
150. Pareek N, Cevallos J, Moliner P, Shah M, Tan LL, Chambers V, Baksi AJ, Khattar RS, Sharma R, Rosen SD, Lyon AR. Activity and outcomes of a cardio-oncology service in the United Kingdom—a five-year experience. *Eur J Heart Fail* 2018;**20**:1721–1731.
151. Stankovic I, Dweck MR, Marsan NA, Bergler-Klein J, Holte E, Manka R, Schulz-Menger J, Sitges M, Haugaa KH. The EACVI survey on cardiac imaging in cardio-oncology. *Eur Heart J Cardiovasc Imaging* 2020 May 28. <https://doi.org/10.1093/ehjci/jeaa111>. Online ahead of print.
152. Lancellotti P, Galderisi M, Donal E, Edvardsen T, Popescu BA, Farmakis D, Filippatos G, Habib G, Lestuzzi C, Santoro C, Moonen M, Jerusalem G, Andarala M, Anker SD; ESC Cardiac Oncology Toxicity Long-Term Registry Investigators. Protocol update and preliminary results of EACVI/HFA Cardiac Oncology Toxicity (COT) Registry of the European Society of Cardiology. *ESC Heart Fail* 2017;**4**:312–318.
153. European Society of Cardiology. ESC Council of Cardio-Oncology. <https://www.escardio.org/Councils/council-of-cardio-oncology/About> (8 May 2020).