



Universiteit
Leiden
The Netherlands

Immunodiagnosics of Lyme neuroborreliosis

Gorkom, T. van

Citation

Gorkom, T. van. (2022, December 8). *Immunodiagnosics of Lyme neuroborreliosis*. Retrieved from <https://hdl.handle.net/1887/3494393>

Version: Publisher's Version

License: [Licence agreement concerning inclusion of doctoral thesis in the Institutional Repository of the University of Leiden](#)

Downloaded from: <https://hdl.handle.net/1887/3494393>

Note: To cite this publication please use the final published version (if applicable).

- 1 Department of Medical Microbiology and Immunology, Diaconessenhuis Hospital, Utrecht, The Netherlands
 - 2 Department of Neurology, Diaconessenhuis Hospital, Utrecht, The Netherlands
 - 3 Centre for Infectious Diseases Research, Diagnostics and Laboratory Surveillance, Centre for Infectious Disease Control, National Institute for Public Health and the Environment (RIVM), Bilthoven, The Netherlands
- * Present address: Kristin Kremer, KNCV Tuberculosis foundation, The Hague, The Netherlands.

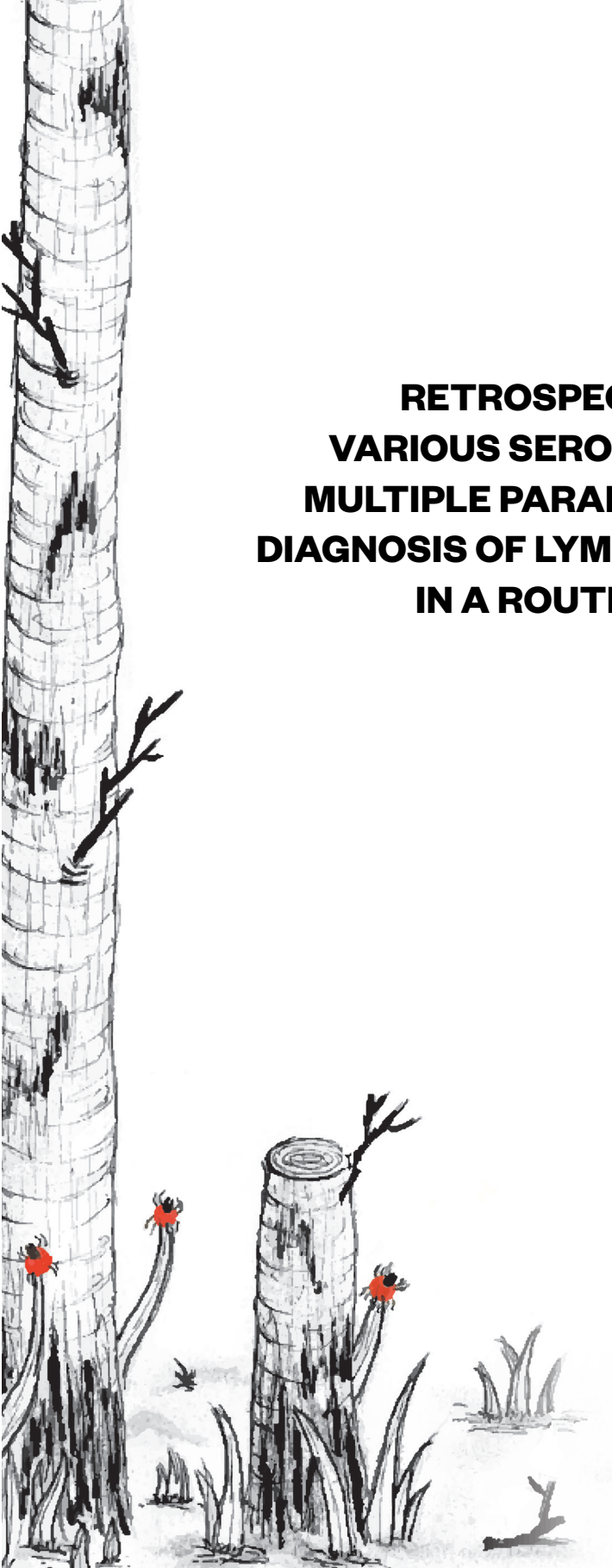
Published in

Microbiol Spectr. 2022 Jun 29;10(3):e0006122. doi: 10.1128/spectrum.00061-22

This work is licensed under a Creative Commons Attribution 4.0 International license.

<https://creativecommons.org/licenses/by/4.0/>





RETROSPECTIVE EVALUATION OF VARIOUS SEROLOGICAL ASSAYS AND MULTIPLE PARAMETERS FOR OPTIMAL DIAGNOSIS OF LYME NEUROBORRELIOSIS IN A ROUTINE CLINICAL SETTING

Tamara van Gorkom ^{1,3}

Willem Voet ²

Gijs H.J. van Arkel ^{1,3}

Michiel Heron ¹

Dieneke B.J.A. Hoeve-Bakker ³

Daan W. Notermans ³

Steven F.T. Thijsen ¹

Kristin Kremer ^{3*}

ABSTRACT

Laboratory diagnosis of Lyme neuroborreliosis (LNB) is challenging, and validated diagnostic algorithms are lacking. Therefore, this retrospective cross-sectional study aimed to compare the diagnostic performance of seven commercial antibody assays for LNB diagnosis. Random forest (RF) modeling was conducted to investigate whether the diagnostic performance using the antibody assays could be improved by including several routine cerebrospinal fluid (CSF) parameters (i.e., leukocyte count, total protein, blood-CSF barrier functionality, and intrathecal total-antibody synthesis), two-tier serology on serum, the CSF level of the B-cell chemokine (C-X-C motif) ligand 13 (CXCL13), and a *Borrelia* species PCR on CSF. In total, 156 patients were included who were classified as definite LNB ($n = 10$), possible LNB ($n = 7$), or non-LNB patient ($n = 139$) according to the criteria of the European Federation of Neurological Societies using a consensus strategy for intrathecal *Borrelia*-specific antibody synthesis. The seven antibody assays showed sensitivities ranging from 47.1% to 100% and specificities ranging from 95.7% to 100%. RF modeling demonstrated that the sensitivities of most antibody assays could be improved by including other parameters to the diagnostic repertoire for diagnosing LNB (range: 94.1% to 100%), although with slightly lower specificities (range: 92.8% to 96.4%). The most important parameters for LNB diagnosis are the detection of intrathecally produced *Borrelia*-specific antibodies, two-tier serology on serum, CSF-CXCL13, Reibergram classification, and pleocytosis. In conclusion, this study shows that LNB diagnosis is best supported using multiparameter analysis. Furthermore, a collaborative prospective study is proposed to investigate if a standardized diagnostic algorithm can be developed for improved LNB diagnosis.

IMPORTANCE

The diagnosis of LNB is established by clinical symptoms, pleocytosis, and proof of intrathecal synthesis of *Borrelia*-specific antibodies. Laboratory diagnosis of LNB is challenging, and validated diagnostic algorithms are lacking. Therefore, this retrospective cross-sectional study aimed to compare the diagnostic performance of seven commercial antibody assays for LNB diagnosis. Multiparameter analysis was conducted to investigate whether the diagnostic performance using the antibody assays could be improved by including several routine (CSF) parameters. The results of this study show that LNB diagnosis is best supported using the detection of intrathecally produced *Borrelia*-specific antibodies, two-tier serology on serum, CSF-CXCL13, Reibergram classification, and pleocytosis. Furthermore, we propose a collaborative prospective study to investigate the potential role of constructing a diagnostic algorithm using multiparameter analysis for improved LNB diagnosis.

KEYWORDS

Borrelia, Lyme neuroborreliosis, cerebrospinal fluid, intrathecal antibody synthesis, antibody index, two-tier serology, random forest, multiparameter analysis, Reibergram

Lyme borreliosis (LB), which is caused by *Borrelia burgdorferi* sensu lato, is the most common tick-borne disease in temperate regions of the Northern Hemisphere [1]. LB is a multisystem disease, and the most frequent clinical symptom is an expanding skin rash also known as erythema migrans [1, 2]. If untreated, the *Borrelia* bacterium can disseminate to other body parts, such as the peripheral and/or central nervous system (Lyme neuroborreliosis [LNB]), joints (Lyme arthritis), or heart (Lyme carditis), or cause acrodermatitis chronica atrophicans (ACA) [3]. In Europe and North America, LNB is seen in approximately 3% to 16% of LB cases [4-7] and often presents as a painful meningoradiculitis with or without cranial nerve involvement, although various combinations of other neurological complaints may occur as well [5, 8]. In the Netherlands, the annual incidence rate for LNB in 2010 was 2.6 per 100,000 inhabitants, which comprised one third of the total incidence rate of disseminated LB [9].

The diagnosis of LNB must be supported by laboratory tests, because the clinical symptoms of LNB are nonspecific. The European Federation of Neurological Societies (EFNS) recommends the detection of an intrathecal immune response to *B. burgdorferi* sensu lato together with the presence of pleocytosis (≥ 5 leukocytes/ μl) in the cerebrospinal fluid (CSF) [5]. Proof of intrathecally produced *Borrelia*-specific antibodies requires simultaneous measurement of *Borrelia*-specific antibodies in CSF and serum of a CSF-serum pair, which should be interpreted relative to the total amount of antibodies in CSF and serum and taking the blood-CSF barrier functionality into consideration [5, 10]. The interpretation of the test results, however, can be complicated, as negative test results do not exclude LNB and positive test results are no indication of active disease. A negative test result in the first few weeks after infection can be explained by the absence of detectable antibody levels, which have to be built up at the start of the infection [11-13]. For antibody tests, sensitivities between 55% and 90% have been reported for symptom durations of less than 6 weeks [11, 14-18]. As the immune response against *Borrelia* expands over time [19-21], the sensitivity improves as the infection progresses and can ultimately reach 100% [11, 15, 22]. Lower sensitivities have also been reported for antibody assays that are based on a single antigen compared to those of antibody assays based on multiple antigens [18, 23, 24]. Furthermore, negative test results can be obtained when the antigens present in the assay do not match those of the *B. burgdorferi* sensu lato strain causing disease. This mismatch can be explained by the intra- and interspecies heterogeneity of *B. burgdorferi* sensu lato [25-30] and/or the antigenic variation the bacterium can apply during the course of disease [31]. A negative test result can also be caused by antibiotic treatment prior to the lumbar puncture (LP), as this might abrogate the immune response [32, 33]. A positive test result can be proof of an active LNB, but can also be the result of a previous, yet cleared, infection as antibody persistence has been reported after successful antibiotic treatment [34, 35].

In clinical practice, proof of intrathecal *Borrelia*-specific antibody synthesis for LNB diagnostics is based on either the detection of these antibodies in CSF-serum pairs and subsequent calculation of a *Borrelia*-specific antibody index (AI) [14-16, 18, 22, 24, 34, 36-38] or the detection of these antibodies in CSF only [39-41]. Many commercial assays are available for the detection of *Borrelia*-specific antibodies, and various studies have evaluated the performance of these assays for LNB diagnostics [16, 18, 23, 24, 38, 40]. A drawback of most of these studies is that study populations were used that were not representative of the clinical setting in which the antibody assays are used. Therefore, this study aimed to compare the diagnostic performance of seven commercial antibody assays for the diagnosis of LNB using a cross-sectional study design. Furthermore, a random forest (RF) model was constructed for each antibody assay to investigate whether the diagnostic performance found for each assay could be improved by including various routine CSF parameters (i.e., leukocyte count, total protein, blood-CSF barrier functionality, and intrathecal total-antibody synthesis). Other parameters added to each RF model included *Borrelia*-specific serum antibodies using two-tier serology, the CSF level of the B-cell chemokine (C-X-C motif) ligand 13 (CXCL13) [42], and a *Borrelia* species PCR on CSF.

RESULTS

STUDY POPULATION

In total, 150 (13.7%) of 1,098 consecutive patients who underwent at least one LP in the predefined study period were included in the current study. Six additional LNB patients were included from outside the predefined study period, all of whom had taken part in two other studies [43, 44]. Details on the selection of the 156 patients have already been published, these patients have also been used to evaluate two commercial CSF-CXCL13 assays [45].

CLASSIFICATION OF THE STUDY POPULATION USING THE EFNS GUIDELINES AND CONSENSUS STRATEGY

All patients were classified as definite LNB, possible LNB, or non-LNB patient based on the EFNS guidelines [5] and consensus strategy according to the flowchart in Fig. S1. Details with regard to clinical symptoms suggestive for LNB, an alternative diagnosis that ruled out LNB, and test results (i.e., pleocytosis and intrathecal *Borrelia*-specific antibody synthesis determined by the CSF-serum assays) needed for the classification of patients are shown in Table S2. The number of possible and definite LNB patients in this study differed slightly from that in our previous study [45], as intrathecal *Borrelia*-specific antibody synthesis was based on either a consensus strategy (this study) or the IDEIA results (previous study). Ten (6.4%) of the 156 patients were classified as definite LNB patient, and 7 (4.5%) of the 156 patients were classified as possible LNB patient (Table 1). Of the seven possible LNB patients, four (57.1%) had pleocytosis and three (42.9%) had intrathecal *Borrelia*-specific antibody synthesis according to the consensus strategy.

Table 1. Classification of the 156 study participants based on the guidelines of the European Federation of Neurological Societies (EFNS) [5] and consensus strategy.

EFNS criteria and consensus strategy used to classify the 156 study participants (no./total [%])				Classification of patients ^a		
Clinical symptoms suggestive of LNB ^b	Pleocytosis (CSF leucocyte count ≥5 leucocytes/μl)	Consensus strategy for intrathecal <i>Borrelia</i> -specific Ab synthesis ^c	Other cause for symptoms	dLNB	pLNB	non-LNB
Yes (56/156 [35.9])	Yes (17/56 [30.4])	Yes (10/17 [58.8])	0/10 (0.0)	10	0	0
		No (7/17 [41.2])	3/7 (42.9) ^d	0	4	3
	No (39/56 [69.6])	Yes (3/39 [7.7])	0/3 (0.0)	0	3	0
		No (36/39 [92.3])	-	0	0	36
No (100/156 [64.1])	Yes (19/100 [19.0])	Yes (0/19 [0.0])	-	0	0	0
		No (19/19 [100])	-	0	0	19
	No (81/100 [81.0])	Yes (0/81 [0.0])	-	0	0	0
		No (81/81 [100])	-	0	0	81
Total				10/156 (6.4)	7/156 (4.5)	139/156 (89.1)

a. Patients are classified as definite Lyme neuroborreliosis (dLNB), possible LNB (pLNB), or non-LNB patient based on the EFNS guidelines (3) and consensus strategy using the flow chart in Fig. S1.

b. Clinical symptoms suggestive of Lyme neuroborreliosis (LNB) were assumed to be present when a request for the detection of intrathecal *Borrelia*-specific antibody synthesis was done at our laboratory at the time of active disease in the past. Clinical symptoms suggestive for LNB or an alternative diagnosis that ruled out LNB as well as test results (i.e., pleocytosis and intrathecal *Borrelia*-specific antibody synthesis determined by the CSF-serum assays) needed for patient classification are shown in Table S2. For patients for whom clinical symptoms were not relevant for final classification, a diagnosis was specified in Table S2 only in case of a pathological immunoglobulin (Ig)M and/or IgG antibody index value in at least one of the five CSF-serum assays, and/or a positive test result in at least one of the two CSF-only assays, and/or a positive *Borrelia* species PCR result on CSF, and/or a positive CSF-CXCL13 result.

c. The consensus strategy entailed that intrathecal *Borrelia*-specific antibody (Ab) synthesis was considered proven only if the majority of the CSF-serum assays under investigation (i.e., IDEIA, Medac ELISA, recomBead assay, Serion ELISA, and Enzygnost ELISA) showed a pathological *Borrelia*-specific IgM and/or IgG AI value (≥1.5).

d. For three patients, the diagnosis of LNB was ruled out, as another cause for their symptoms was found. One patient was diagnosed with neurosyphilis, one patient had residual complaints due to a previously treated LNB, and one patient had an isolated paralysis of the flexor pollicis due to a Schwannoma in the shoulder, see also Table S2.

A total of 139 (89.1%) of the 156 patients were classified as non-LNB patient. Thirty-nine (28.1%) of them had clinical symptoms suggestive of LNB, of whom 36 (92.3%) had neither pleocytosis nor intrathecal *Borrelia*-specific antibody synthesis according to the consensus strategy and 3 (7.7%) had pleocytosis only. For these three patients, another cause for their symptoms was found (Table S2). One hundred (71.9%) of the 139 patients classified as non-LNB patient did not have clinical symptoms suggestive of LNB. Eighty-one of them had neither pleocytosis nor intrathecal *Borrelia*-specific antibody synthesis according to the consensus strategy, and the remaining 19 had pleocytosis only.

DEMOGRAPHIC CHARACTERISTICS AND CLINICAL PARAMETERS AMONG THE THREE STUDY GROUPS

Table 2 shows a detailed overview of the demographic characteristics and clinical parameters among the three study groups. Pleocytosis, an elevated total protein level in CSF, and a positive *Borrelia* species PCR result on CSF was found among definite LNB patients more often than among possible LNB and non-LNB patients, and this was significantly more often than among non-LNB patients. CSF-CXCL13 positivity was found among definite LNB patients significantly more often than among possible LNB and non-LNB patients. No significant differences were observed among the three study groups with regard to gender, age, symptom duration, and CSF-glucose levels.

BORRELIA-SPECIFIC IGM AND IGG RESULTS ON SERUM AMONG THE THREE STUDY GROUPS

All definite and possible LNB patients had a positive (or equivocal) C6 enzyme-linked immunosorbent assay (ELISA) result on serum, and this was significantly higher than that among non-LNB patients (Table 2). Two-tier serology results on serum showed that the percentage of positive test results for *Borrelia*-specific immunoglobulin (Ig)M, IgG, and the combined IgM and IgG results, hereafter referred to as overall Ig results, was comparable between definite and possible LNB patients. These percentages were significantly higher among those two patient groups than among non-LNB patients, except for the percentage of positive test results for *Borrelia*-specific IgM between definite LNB and non-LNB patients.

BLOOD-CSF BARRIER FUNCTIONALITY AMONG THE THREE STUDY GROUPS

Measurement of CSF and serum albumin concentrations and the subsequent calculation of the CSF/serum quotient for albumin (Q Alb) provided insight into the functionality of the blood-CSF barrier. A dysfunctional blood-CSF barrier was found among definite LNB patients more often than among possible LNB and non-LNB patients, and this was significantly more often than among non-LNB patients (Table 2).

INTRATHECAL TOTAL IGM AND TOTAL IGG SYNTHESIS AMONG THE THREE STUDY GROUPS

Intrathecal total-antibody synthesis among definite LNB patients was based on an IgM with or without an IgG response (Table S2). Intrathecal total-antibody synthesis among possible LNB patients was based on a solitary IgM response and among non-LNB patients based on an IgM and/or IgG response. Intrathecal total IgM synthesis was found among definite and possible LNB patients significantly more often than among non-LNB patients (Table 2). Intrathecal synthesis of total IgG with or without total IgM was more common among definite LNB patients than among possible LNB and non-LNB patients, although this was significant only between definite LNB and non-LNB patients.

Table 2. Detailed overview of the demographic and clinical parameters among definite LNB, possible LNB, and non-LNB patients

Characteristic ^a	Value for indicated patient group ^b			Raw P value for BH comparison ^{b,c,e}		
	dLNB (n = 10) ^c	pLNB (n = 7) ^d	non-LNB (n = 139)	dLNB vs pLNB	dLNB vs non-LNB	pLNB vs non-LNB
Gender (no. of males [%])	7 (70.0)	5 (71.4)	66 (47.5)	1.000	0.203	0.266
Age (mean [95% CI]/[range])	61.2 (48.1-74.3)/(10.7-89.2)	54.1 (46.1-62.0)/(42.1-74.3)	51.8 (49.1-54.6)/(17.2-83.4)	0.133	0.063	0.740
Duration of symptoms in days (geometric mean [95% CI]/[range]) ^f	26.3 (11.9-58.0)/(3.0-174)	51.9 (19.1-140)/(8.0-288)	64.1 (44.3-92.8)/(0.0-2,911)	0.364	0.075	0.633
Pleocytosis						
CSF leucocyte count ≥ 5 leucocytes/ μ l (no. [%])	10 (100)	4 (57.1)	22 (15.8)	0.051	<0.001 ^l	0.019 ^k
CSF leucocyte count/ μ l (geometric mean [95% CI]/[range])	76.7 (38.9-151)/(8.3-394)	6.7 (3.2-14.2)/(2.0-21.0)	1.1 (0.8-1.6)/(0.0-821)	<0.001 ^l	<0.001 ^l	0.001 ^l
Glucose in CSF in mmol/l (geometric mean [95% CI]/[range])	3.3 (2.9-3.7)/(2.3-5.1)	3.8 (3.6-4.1)/(3.5-4.6)	3.6 (3.5-3.7)/(1.0-7.7)	0.012 ^k	0.029 ^k	0.127
Total protein in CSF						
Elevated total protein in CSF (yes [%]) ^g	6 (60.0)	0 (0.0)	10 (7.2)	0.035 ^k	<0.001 ^l	1.000
Total protein in g/l (mean [95% CI]/[range])	940 (687-1,190)/(430-1,490)	461 (370-553)/(300-650)	450 (389-512)/(170-4,280)	0.006 ^l	<0.001 ^l	0.279
Positive CXCL13 result on CSF	9 (90.0)	1 (14.3)	2 (1.4)	0.004 ^l	<0.001 ^l	0.138
<i>Borrelia</i> species PCR result on CSF	2 (20.0)	0 (0.0)	0 (0.0)	0.485	0.004 ^l	1.000
C6 ELISA on serum	10 (100)	7 (100)	38 (27.3)	1.000	<0.001 ^l	<0.001 ^l
Two-tier serology on serum ^h						
<i>Borrelia</i> -specific IgM (no. [%])	3 (30.0)	3 (42.9)	5 (3.6)	0.644	0.010 ^k	0.003 ^l
<i>Borrelia</i> -specific IgG (rev) ^h (no. [%])	9 (90.0)	6 (85.7)	29 (20.9) ^h	1.000	<0.001 ^l	<0.001 ^l
<i>Borrelia</i> -specific IgG (old) ^h (no. [%])			27 (19.4)	1.000	<0.001 ^l	<0.001 ^l
<i>Borrelia</i> -specific IgM and/or IgG (rev) ^h (no. [%])	9 (90.0)	6 (85.7)	31 (22.3) ^h	1.000	<0.001 ^l	0.001 ^l
<i>Borrelia</i> -specific IgM and/or IgG (old) ^h (no. [%])			29 (20.9)	1.000	<0.001 ^l	<0.001 ^l
Albumin						
Dysfunctional blood-CSF barrier (no. [%])	9 (90.0)	3 (42.9)	22 (15.8)	0.101	<0.001 ^l	0.097
Q albumin (mean $\times 10^{-3}$) [95% CI]/[range])	13.6 (9.9-17.2)/(5.7-24.2)	7.0 (4.7-9.3)/(3.7-12.5)	6.1 (5.1-7.2)/(1.1-72.3)	0.019 ^k	<0.001 ^l	0.188
Intrathecal total antibody synthesis ⁱ						
Intrathecal total IgM (no. [%])	7 (70.0)	3 (42.9)	7 (5.0)	0.350	<0.001 ^l	0.007 ^l
Intrathecal total IgG (no. [%])	5 (50.0)	0 (0.0)	9 (6.5)	0.044 ^k	<0.001 ^l	1.000
Intrathecal total IgM and/or IgG (no. [%])	7 (70.0)	3 (42.9)	14 (10.1)	0.350	<0.001 ^l	0.035 ^k

a. CI, confidence interval; CSF, cerebrospinal fluid; CXCL13, B-cell chemokine (C-X-C motif) ligand 13; Q, quotient.

b. Patients are categorized as definite Lyme neuroborreliosis (dLNB), possible LNB (pLNB), or non-LNB patient based on the EFNS guidelines [5] and consensus strategy using the flow chart in Fig. S1.

c. Six (60.0%) of the 10 definite LNB patients were part of the consecutive patients included between August 2013 and June 2016, and 4/10 (40.0%) were selected from outside this period, see also Table S2.

d. Five (71.4%) of the seven possible LNB patients were part of the consecutive patients included between August 2013 and June 2016, and 2/7 (28.6%) were selected from outside this period, see also Table S2.

e. BH, Benjamini-Hochberg.

f. Durations of symptoms in days for definite and possible LNB patients are also listed in Table S2.

g. An elevated total protein concentration in the CSF is age dependent (reference range: 150 to 300 mg/ml for ages ≤ 10 years, 200 to 500 mg/ml for ages between 10 and 40 years, and 250 to 800 mg/ml for ages >40 years [73]).

h. Two-tier serology on serum was performed using the C6 ELISA as a screening test and positive (and equivocal) C6 ELISA results were confirmed using the recomLine IgM and IgG immunoblot (IB). The manufacturer of the recomLine IB revised the interpretation of the recomLine IgG IB in January 2019 by increasing the point value of the ViSe band (Table S3). For two non-LNB patients, the recomLine IgG IB result changed from negative to equivocal (equivocal results were scored positive), see also Table S2. Consequently, results are shown that include both the revised (rev) and old interpretation criteria.

i. Intrathecal total IgM and/or total IgG synthesis is proven if the intrathecal fraction is larger than 10% as described by Reiber (64).

j. Significant P value after applying the Benjamini-Hochberg procedure (FDR $\leq 2.0\%$).k. Nonsignificant P value after applying the Benjamini-Hochberg procedure (FDR $> 2.0\%$).

BORRELIA-SPECIFIC IGM AND IGG AI RESULTS AMONG THE THREE STUDY GROUPS

For each of the five CSF-serum assays, the percentage of positive AI results for *Borrelia*-specific IgM, IgG, or both among definite LNB patients was significantly higher than that among non-LNB patients (Table 3). Most of these percentages were also higher among possible LNB than among non-LNB patients, and this was significant for *Borrelia*-specific IgG and overall Ig, except when the IDEIA was used. For *Borrelia*-specific IgM, however, this was significant only using the Enzygnost IgM ELISA. For all definite LNB patients, and for all possible LNB patients without pleocytosis ($n = 3$), a positive *Borrelia*-specific AI result was based on an IgG response with or without IgM (Table S2). Of the possible LNB patients with pleocytosis ($n = 4$), two had a positive *Borrelia*-specific AI result for IgM only in either one or two CSF-serum assays. Twelve (8.6%) of the 139 non-LNB patients had a positive *Borrelia*-specific AI result for IgM and/or IgG in a minority of the CSF-serum assays (Table S2).

Table 3. Results of the five CSF-serum assays and two CSF-only assays among definite LNB, possible LNB, and non-LNB patients

Assay	Antibody class	No. of cases with a positive result per total (%) for indicated patient group ^a			Raw <i>P</i> value for BH comparison ^{a,d}		
		dLNB ($n = 10$) ^b	pLNB ($n = 7$) ^c	non-LNB ($n = 139$)	dLNB vs pLNB	dLNB vs non-LNB	pLNB vs non-LNB
IDEIA	IgM	2/10 (20.0)	1/7 (14.3)	0/139 (0.0)	1.000	0.004 ⁱ	0.048 ^j
	IgG	7/10 (70.0)	1/7 (14.3)	0/139 (0.0)	0.050	<0.001 ⁱ	0.048 ^j
	IgM and/or IgG	7/10 (70.0)	1/7 (14.3)	0/139 (0.0)	0.050	<0.001 ⁱ	0.048 ^j
Medac ELISA	IgM	4/10 (40.0)	1/7 (14.3)	0/139 (0.0)	0.338	<0.001 ⁱ	0.048 ^j
	IgG	10/10 (100)	3/7 (42.9)	0/139 (0.0)	0.015 ^j	<0.001 ⁱ	<0.001 ⁱ
	IgM and/or IgG	10/10 (100)	4/7 (57.1)	0/139 (0.0)	0.051	<0.001 ⁱ	<0.001 ⁱ
recomBead assay ^e	IgM	4/10 (40.0)	0/6 (0.0) ^e	0/139 (0.0)	0.234	<0.001 ⁱ	1.000
	IgG	10/10 (100)	3/6 (50.0) ^e	4/138 (2.9) ^e	0.036 ^j	<0.001 ⁱ	0.001 ⁱ
	IgM and/or IgG	10/10 (100)	3/5 (60.0) ^e	4/138 (2.9) ^e	0.095	<0.001 ⁱ	<0.001 ⁱ
Serion ELISA ^f	IgM	5/9 (55.6) ^f	1/7 (14.3)	0/138 (0.0) ^f	0.145	<0.001 ⁱ	0.048 ^j
	IgG	9/9 (100) ^f	3/7 (42.9)	6/138 (4.3) ^f	0.019 ^j	<0.001 ⁱ	0.005 ⁱ
	IgM and/or IgG	9/9 (100) ^f	3/7 (42.9)	6/138 (4.3) ^f	0.019 ^j	<0.001 ⁱ	0.005 ⁱ
Enzygnost ELISA ^g	IgM	3/5 (60.0) ^g	2/5 (40.0) ^g	1/139 (0.7)	1.000	<0.001 ⁱ	0.003 ⁱ
	IgG	5/5 (100) ^g	3/5 (60.0) ^g	3/139 (2.2)	0.444	<0.001 ⁱ	<0.001 ⁱ
	IgM and/or IgG	5/5 (100) ^g	5/5 (100) ^g	4/139 (2.9)	1.000	<0.001 ⁱ	<0.001 ⁱ
C6 ELISA	IgM and/or IgG	10/10 (100)	6/7 (85.7)	5/139 (3.6)	0.412	<0.001 ⁱ	<0.001 ⁱ
recomLine IB ^h	IgM	0/10 (0.0)	0/7 (0.0)	0/139 (0.0)	1.000	1.000	1.000
	IgG (rev) ^h	8/10 (80.0) ^h	1/7 (14.3) ^h	5/139 (3.6) ^h	0.015 ^j	<0.001 ⁱ	0.259
	IgG (old) ^h	7/10 (70.0)	0/7 (0.0)	0/139 (0.0)	0.010 ^j	<0.001 ⁱ	1.000
	IgM and/or IgG (rev) ^h	8/10 (80.0) ^h	1/7 (14.3) ^h	5/139 (3.6) ^h	0.015 ^j	<0.001 ⁱ	0.259
	IgM and/or IgG (old) ^h	7/10 (70.0)	0/7 (0.0)	0/139 (0.0)	0.010 ^j	<0.001 ⁱ	1.000

a. Patients are classified as definite Lyme neuroborreliosis (dLNB), possible LNB (pLNB), or non-LNB patient based on the EFNS criteria [5] and consensus strategy using the flow chart in Fig. S1.

b. Six (60.0%) out of 10 dLNB patients were part of the consecutive patients included between August 2013 and June 2016, and 4/10 (40.0%) were selected from outside this period, see also Table S2.

c. Five (71.4%) out of seven pLNB patients were part of the consecutive patients included between August 2013 and June 2016, and 2/7 (28.6%) were selected from outside this period, see also Table S2.

d. BH, Benjamini-Hochberg.

e. For three cases, either the IgM AI value (one pLNB patient) or the IgG AI value (one pLNB and one non-LNB patient) could not be determined by the recomBead assay due to insufficient material.

f. For two cases, one dLNB and one non-LNB patient, the IgM and IgG AI values could not be determined by the Serion ELISA due to insufficient sample material.

g. For seven cases, five dLNB and two pLNB patients, the IgM and IgG AI values could not be determined by the Enzygnost ELISA, because the ELISA was taken of the market.

h. The manufacturer of the recomLine immunoblot (IB) revised the interpretation of the recomLine IgG IB in January 2019 by increasing the point value of the VIsE band (Table S3). For seven cases, one dLNB, one pLNB, and five non-LNB patients, the recomLine IgG IB result changed from negative to equivocal (equivocal results were scored positive), see also Table S2. Consequently, results are shown that include both the revised (rev) and old interpretation criteria.

i. Significant *P* value after applying the Benjamini-Hochberg procedure ($FDR \leq 2.0\%$).

j. Nonsignificant *P* value after applying the Benjamini-Hochberg procedure ($FDR > 2.0\%$).

BORRELIA-SPECIFIC IGM AND IGG IN CSF AMONG THE THREE STUDY GROUPS

All definite and most of the possible LNB patients had a positive C6 ELISA result on CSF, and this C6 ELISA positivity was significantly higher than that among non-LNB patients (Table 3). Using the *recomLine* immunoblot (IB) on CSF, IgM was not detected at all. *RecomLine* IgG IB positivity using the revised interpretation criteria of the manufacturer (Table S3), which were elaborated on throughout this article, was more common among definite LNB patients than among possible LNB and non-LNB patients, although this was significant only between definite LNB and non-LNB patients (Table 3).

COMPARISON OF BORRELIA-SPECIFIC IGM AND IGG IN CSF AND SERUM

Detection of *Borrelia*-specific antibodies in CSF is no direct proof that these antibodies are intrathecally produced and can also be explained by passive diffusion from the blood. C6 ELISA positivity in CSF among definite LNB patients did not differ from that in serum (100% [10/10], both) (Table S2). C6 ELISA positivity in CSF among possible LNB patients was comparable to that in serum (85.7% [6/7] and 100% [7/7], respectively) ($P = 1.000$). Among non-LNB patients, however, C6 ELISA positivity in CSF was significantly lower than that in serum (3.6% [5/139] and 27.3% [38/139], respectively) ($P < 0.001$; false-discovery rate [FDR] $\leq 2.0\%$).

The overall Ig *recomLine* IB positivity in CSF among definite LNB patients was comparable to that in serum (80.0% [8/10] and 90% [9/10], respectively) (Table S2) ($P = 1.000$). Among possible LNB patients, the overall Ig *recomLine* IB positivity in CSF was lower than that in serum (14.3% [1/7] and 85.7% [6/7], respectively) ($P = 0.074$). Among non-LNB patients, the overall Ig *recomLine* IB positivity in CSF was significantly lower than that in serum (3.6% [5/139] and 25.2% [35/139], respectively) ($P < 0.001$; FDR $\leq 2.0\%$).

DIAGNOSTIC PERFORMANCE OF THE SEVEN ANTIBODY ASSAYS

The sensitivities of the IgM assays to diagnose LNB among definite and possible LNB patients ranged from 0.0% (*recomLine* IgM IB) to 50.0% (Enzygnost IgM ELISA) (Fig. 1A). The sensitivities of the IgG assays were higher and ranged from 47.1% (IDEIA IgG) to 81.3% (*recomBead* IgG assay) (Fig. 1A). The overall Ig sensitivities of the antibody assays largely overlapped with those for IgG only and ranged from 47.1% (IDEIA) to 100% (Enzygnost ELISA) (Fig. 1A). The overall Ig sensitivities of two assays were slightly higher than those for IgG only, as a solitary IgM response was found for two possible LNB patients in either one (Medac ELISA) or two (Medac and Enzygnost ELISA) assays (Table S2). The sensitivity of the *recomBead* assay based on the overall Ig results was also slightly higher than that for IgG only, as for one possible LNB patient the IgM result was missing (Table S2). The specificities of all IgM assays were 100%, except for the Enzygnost IgM ELISA for which the specificity was 99.3% (Fig. 1A). The specificities of the IgG assays ranged from 95.7% (Serion IgG) to 100% (IDEIA IgG and Medac IgG) (Fig. 1A). The specificity of the Enzygnost ELISA based on the overall Ig results was slightly lower than that for IgG only due to a solitary IgM response for one non-LNB patient (Table S2). The sensitivity and specificity of the C6 ELISA were 94.1% and 96.4%, respectively. For IgM, IgG, and overall Ig, the sensitivity and specificity of the seven antibody assays did not differ significantly as the respective 95% confidence intervals (CIs) overlapped (Fig. 1A).

The positive predictive value (PPV) of the Enzygnost IgM ELISA was 83.3%, and the PPVs of all other IgM assays were 100%, except for the *recomLine* IgM IB, for which the PPV could not be calculated due to the absence of positive IgM results (Fig. 1B). For the IgG assays, the PPVs ranged from 64.3% (*recomLine* IgG IB) to 100% (IDEIA and Medac ELISA) (Fig. 1B). The PPVs of the antibody assays based on the overall Ig results were almost comparable to those based on IgG only (Fig. 1B). The negative predictive values (NPVs) of the IgM assays ranged from 89.1% (*recomLine* IgM IB) to 96.5% (Enzygnost IgM ELISA) (Fig. 1B). For the IgG assays, the NPVs ranged

from 93.9% (IDEIA IgG) to 98.6% (Enzygnost IgG ELISA) (Fig. 1B). The NPVs of the antibody assays based on the overall Ig results were almost comparable to those based on IgG only (Fig. 1B). The PPV and NPV of the C6 ELISA were 76.2% and 99.3%, respectively. For IgM, IgG, and the overall Ig results, the PPVs and negative predictive values (NPVs) of the seven antibody assays did not differ significantly as the respective 95% CIs overlapped (Fig. 1B).

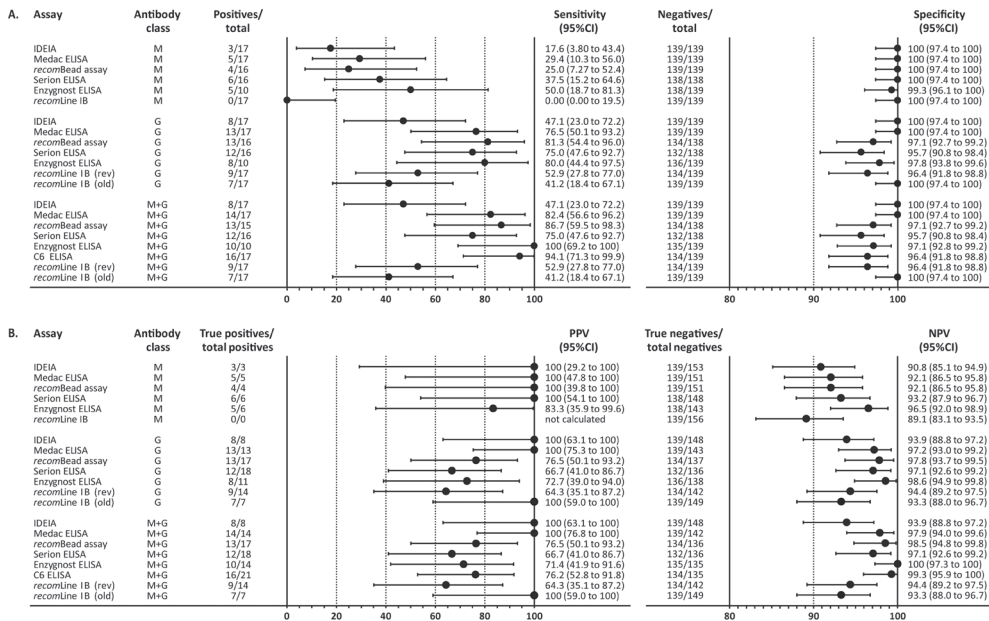


Fig. 1. Overview of the sensitivity and specificity (A) and the positive (PPV) and negative predictive value (NPV) (B) and 95% confidence intervals (CIs) of the five antibody assays tested on cerebrospinal fluid (CSF)-serum pairs and the two antibody assays tested on CSF only for IgM (M), IgG (G), or IgM and IgG combined (M+G). Cases consisted of definite and possible LNB patients, and controls consisted of non-LNB patients. The positives per total (A) are based on the number of pathological AI values (CSF-serum assays) or positive test results (CSF-only assays) among all the cases and are used to calculate the sensitivity. The negatives per total (A) are based on the number of normal AI values (CSF-serum assays) or negative test results (CSF-only assays) among all the controls and are used to calculate the specificity. The true positives (B) are cases that have either a pathological AI value (CSF-serum assays) or a positive test result (CSF-only assays) per total positives (i.e., all patients that have a pathological AI value [CSF-serum assays] or a positive test result [CSF-only assays]). The true negatives (B) are controls that have either a normal AI value (CSF-serum assays) or a negative test result (CSF-only assays) per total negatives (i.e., all patients that have a normal AI value [CSF-serum assays] or a negative test result [CSF-only assays]). The manufacturer of the *recomLine* immunoblot (IB) revised the interpretation of the *recomLine* IgG IB in January 2019 by increasing the point value of the VlsE band (Table S3), which had an effect on the test result (Table 3 and S2). Consequently, results are shown that include both the revised (rev) and old interpretation criteria. For the *recomLine* IgM IB, the PPV could not be calculated as this assay yielded no positive test results.

POTENTIAL ROLE OF ADDITIONAL PARAMETERS FOR PREDICTING LNB

Random forest (RF) modeling was performed to investigate if the diagnostic performance using the antibody assays could be improved by including the results of other parameters. The seven RF models performed comparably well, which was reflected by the areas under the curve (AUCs) that ranged from 0.970 to 0.993 (Table 4). The probability of misclassification of the 156 patients ranged from 3.4% (Enzygnost ELISA RF model) to 7.1% (IDEIA and *recomLine* IB RF models). The sensitivities and NPVs of most RF models were higher than the upper limit of the respective 95% CIs obtained using the results of the antibody assays only, except for the C6 and the Enzygnost ELISA (Table 4 and Fig. 1A and B). In contrast, the specificities and PPVs of most RF models were comparable with those of the antibody assays only, except for the IDEIA and the Medac ELISA, for

which the specificities and PPVs obtained using RF modeling were below the lower limit of the respective 95% CIs obtained using the results of the antibody assays only.

For each RF model, the relative importance of the 13 predictor variables was visualized in a heat map (Table 5). Overall, the predictor variables in each RF model ranked comparably. The most important diagnostic parameter in predicting LNB was the antibody assay with a mean rank of 1.7, followed by two-tier serology on serum (mean rank of 2.4) and CSF-CXCL13 (mean rank of 2.6). Of all Reibergram-based predictor variables, a dysfunctional blood-CSF barrier with intrathecal total-antibody synthesis (i.e., Reibergram area 3) was most important with a mean rank of 4.1 and preceded pleocytosis (mean rank of 5.1). A dysfunctional blood-CSF barrier in the absence of intrathecal total-antibody synthesis (i.e., Reibergram area 2) and the *Borrelia* species PCR on CSF contributed the least (Table 5).

Table 4. The performance characteristics obtained by constructing random forest models for each antibody assay to predict Lyme neuroborreliosis^a

Antibody assay	Value of performance characteristics of antibody-assay specific RF models ^b					
	AUC	pmc	Sensitivity	Specificity	PPV	NPV
IDEIA	0.973	7.1	94.1	92.8	61.5	99.2
Medac ELISA	0.991	5.1	100	94.2	68.0	100
recomBead assay	0.993	4.6	100	94.9	68.2	100
Serion ELISA	0.986	5.2	100	94.2	66.7	100
Enzygnost ELISA	0.986	3.4	100	96.4	66.7	100
C6 ELISA	0.987	4.5	94.1	95.7	72.7	99.3
recomLine IB (rev) ^b	0.970	7.1	94.1	92.8	61.5	99.2
recomLine IB (old) ^b	0.972	7.1	94.1	92.8	61.5	99.2

a AUC, area under the curve; pmc, probability of misclassification; PPV, positive predictive value; NPV, negative predictive value; IB, immunoblot.

b Each random forest (RF) model included the following 13 predictor variables: the respective antibody assay, two-tier serology on serum, pleocytosis, CSF-CXCL13, total protein in CSF, *Borrelia* species PCR on CSF, and the seven predictor variables based on one or multiple areas of the Reibergram as shown in Table 6.

c The manufacturer of the recomLine immunoblot (IB) revised the interpretation of the recomLine IgG IB in January 2019 by increasing the point value of the VIsE band (Table S3), which had an effect on the test result (Table 3 and S2). Consequently, results are shown that include both the revised (rev) and old interpretation criteria.

Table 5. Heat maps of the relative contribution of the 13 predictor variables included in the random forest models to investigate their contribution in predicting Lyme neuroborreliosis

Predictor variables included in the RF model ^a	Relative importance of each predictor variable for each (antibody-assay specific) RF model ^b								Mean rank of predictor variable ^d
	IDEIA	Medac ELISA	recomBead assay	Serion ELISA	Enzygnost ELISA	C6 ELISA	recomLine (rev) ^c	recomLine (old) ^c	
Antibody assay	211	354	303	250	250	318	94	174	1.7
Two-tier serology on serum ^e	204	173	157	178	111	145	231	217	2.4
CSF-CXCL13	174	141	170	191	88	153	197	179	2.6
Reibergram; area 3 ^f	146	115	131	118	123	115	145	147	4.1
Pleocytosis	125	123	91	137	41	139	148	128	5.1
Reibergram; all areas separately ^f	95	74	126	101	85	108	99	99	5.6
Reibergram; areas 3 and 4 ^f	81	60	82	64	68	78	89	86	7.4
Reibergram; area 1 ^f	60	55	115	92	61	90	69	65	7.6
Reibergram; areas 2 and 3 ^f	63	46	78	72	56	59	62	63	8.9
Reibergram; area 4 ^f	58	40	63	52	39	55	65	64	10.1
Total protein in CSF	43	40	47	18	-29	28	71	43	11.0
Reibergram; area 2 ^f	28	10	43	37	32	18	18	27	12.1
<i>Borrelia</i> PCR on CSF	27	28	28	33	0	27	27	27	12.3

a. RF, random forest; CSF, cerebrospinal fluid; CXCL13, B-cell chemokine (C-X-C motif) ligand 13.

b. The relative importance of each predictor variable was calculated as described by Liaw and Wiener [72].

c. The manufacturer of the *recomLine* immunoblot (IB) revised the interpretation of the *recomLine* IgG IB in January 2019 by increasing the point value of the VIsE band (Table S3), which had an effect on the test result (Table 3 and S2). Consequently, results are shown that include both the revised (rev) and old interpretation criteria.

d. For each RF model, the 13 predictor variables were ranked based on their relative contribution from 1 (highest contribution) to 13 (lowest contribution). The mean rank of each predictor variable was calculated using the individual ranks obtained in each of the seven RF models and did not include the RF model of the *recomLine* IgG IB results based on the old interpretation criteria.

e. Two-tier serology on serum was performed using the C6 ELISA as a screening test, and positive (and equivocal) C6 ELISA results were confirmed using the *recomLine* IgM and IgG IB. The two-tier serology results on serum included the *recomLine* IB results obtained with the revised interpretation criteria of the *recomLine* IgG IB (Table 2 and S2).

f. For each RF model, the contribution of the Reibergram classification was assessed as described in Table 6.

DISCUSSION

In this retrospective study, the diagnostic performance of seven antibody assays for the diagnosis of LNB was evaluated. A clinically well-defined study population was used consisting of all consecutive patients from whom CSF and serum were drawn in the routine clinical setting of our hospital and who fulfilled the inclusion criteria. Patients were classified using the EFNS guidelines [5], and intrathecal *Borrelia*-specific antibody synthesis was considered proven using a consensus strategy. RF modeling was performed to assess the utility of additional parameters for predicting LNB.

Of all performance characteristics determined in this study (i.e., sensitivity, specificity, PPV, and NPV), the sensitivity of the seven antibody assays to diagnose LNB among definite and possible LNB patients showed the largest variation (range: 47.1% to 100%), although none of the differences were statistically significant. In general, differences in sensitivity between antibody

assays can be influenced by several factors, such as the antigens present in the assay [24, 38, 46]. These antigens might be expressed at different time points [20, 21] or might not match the antigens expressed by the *B. burgdorferi* sensu lato strain causing disease due to inter- and intraspecies heterogeneity and/or antigenic variation [25-31]. Overall, it is reasonable to assume that antibody assays based on multiple antigens or whole-cell lysates are expected to give rise to a higher number of positive test results among cases than assays based on a single or a limited number of antigens. Indeed, the sensitivity of the IDEIA, based on a single antigen, was the lowest (i.e., 47.1%) and the sensitivity of the Enzygnost ELISA, based on a whole-cell lysate, was the highest (i.e., 100%). Other studies that investigated multiple antibody assays based on one (i.e., the IDEIA) or multiple antigens also reported the lowest sensitivity for the IDEIA [18, 23, 24].

Besides the large variation in sensitivity between the antibody assays, the sensitivity of most assays did not reach 100%, and this could be explained by the case definition used. In this study, both definite and possible LNB patients were included as cases, which is preferable from a clinical point of view to avoid undertreatment of LNB patients. It was hypothesized previously that possible LNB patients with pleocytosis most likely represent early LNB patients for whom the expanding antibody response is below the detection limit of the antibody assay [47, 48]. In this study, this hypothesis is supported by the presence of a solitary *Borrelia*-specific IgM response in two possible LNB patients with pleocytosis, underlining the need for both IgM and IgG testing in LNB diagnostics, as was mentioned before [14, 21]. This hypothesis is further supported by a paper from Hansen and Lebech [15], who also reported a low sensitivity for the IDEIA among LNB patients with a short disease duration (sensitivity of 17% for symptoms duration of ≤ 7 days), which increased to 100% for LNB patients with a disease duration of more than 6 weeks. Early antibiotic treatment can also affect sensitivity since it can abrogate the immune response and, consequently, result in (false) negative test results among cases; however, in this study, antibiotic treatment for LNB had started after the LP was performed (Table S2).

When antibody assays are used that are based on multiple antigens or whole-cell lysates, more (false) positive test results can be expected among controls as well, which leads to a lower specificity. Positive test results among non-LNB patients, which were found mainly for the IgG CSF-serum assays, indeed underline the positive correlation between the number of antigens present in the assay and the number of positive test results. Furthermore, antibody assays based on whole-cell lysates can generate false-positive test results due to the presence of cross-reactive antigens [49]. Two non-LNB patients, one with active neurosyphilis and one who had been treated for active neurosyphilis in the past, had a positive *Borrelia*-specific AI result in either the Serion IgG or the Enzygnost IgG ELISA, which could be explained by cross-reactive *Treponema* antibodies [16, 50]. As none of the non-LNB patients with a positive *Borrelia*-specific AI result had pleocytosis, except for the patient with active neurosyphilis, an active LNB infection was not likely [47, 48].

Considering that the use of a CSF-serum assay and the calculation of an AI is rather complicated, an assay tested on CSF only would be more convenient and preferable in routine clinical practice. The interpretation of positive test results using a CSF-only assay, however, is complicated because a positive test result can be caused by intrathecal *Borrelia*-specific antibody synthesis or be the result of passive diffusion of these antibodies from the blood or of a traumatic LP. Of the two CSF-only assays tested in this study, the C6 ELISA performed best and might be useful as a screening assay since the NPV was 99.3%. Positive C6 ELISA results on CSF, however, should be confirmed using a CSF-serum assay and subsequent AI calculation that corrects for a dysfunctional blood-CSF barrier to prove intrathecal *Borrelia*-specific antibody synthesis.

In addition to intrathecal *Borrelia*-specific antibody synthesis, the results of other parameters, such

as an elevated CSF leucocyte count [5, 14, 28], a dysfunctional blood-CSF barrier [5, 14], intrathecal total-antibody synthesis with an IgM dominance [14, 28, 51], and elevated CSF-total protein [5, 14, 28] and CSF-CXCL13 levels [5, 28, 42, 45], can support the diagnosis of LNB. In our study, these findings were confirmed, as all these parameter results were found among definite LNB patients more often than among non-LNB patients. These findings, thus, strengthen the correct classification of the patients in our study and prompted us to assess the additional value of these parameters in the diagnosis of LNB. RF modeling showed that additional parameters could, indeed, be helpful in the diagnosis of LNB by increasing the sensitivity and NPV, although with a loss in specificity and PPV. In clinical practice, however, overtreating some patients at the cost of not missing true LNB patients is preferred. Overall, two-tier serology on serum, CSF-CXCL13, a dysfunctional blood-CSF barrier with proof of intrathecal total-antibody synthesis (Reibergram area 3), and pleocytosis contributed the most to the increased diagnostic performance. To minimize undertreatment, antibody assays with a high NPV are preferred. The EFNS recommends using an AI calculation to prove intrathecal synthesis of *Borrelia*-specific antibodies [5], and the need for this is confirmed in our study. The NPVs of the antibody assays only and those of the RF models showed that RF modeling using a Reiber-based CSF-serum assay is preferred, as the respective NPVs were highest. The results obtained with RF modeling are promising and open up the possibility of defining a diagnostic algorithm for LNB diagnostics.

This study had some limitations. First, some CSF-serum assays lacked results for a few patients, which could have influenced the test performance of these assays. Second, due to the low LNB incidence, few LNB patients were included within the predefined study period. Therefore, six additional LNB patients were included from outside this period. As the total number of LNB patients included in the current study was comparable to the 15 patients expected to be diagnosed with LNB in the predefined study period, we believe that the cross-sectional design of the study holds as has been discussed in more detail previously [45]. Third, 20.9% of the non-LNB patients were seropositive for *Borrelia*-specific IgG, whereas the IgG seroprevalence of the Dutch population is 4% to 8% [52]. This suggests a selection bias in our study population, although one could argue that a neurologist is more inclined to perform an LP when *Borrelia*-specific antibodies are detected in the blood. This has no consequence for the evaluation of the seven antibody assays, since this reflects routine clinical practice and underlines the need of nonbiased, consecutively selected patient samples for the evaluation of diagnostic assays [53]. Fourth, a bias toward older patients was introduced in this study by the inclusion criteria, as at least 1,250 ml of CSF and 110 ml of serum had to be present before a patient could be included in order to perform the multiple antibody assays under investigation. In general, less patient material is collected from children than from adults. Indeed, of all the 423 consecutive patients from whom a CSF and serum sample was drawn less than 24 h apart (see Fig. 1 of the previously published manuscript [45]), 61 (14.4%) were children (age <18 years; data not shown). In contrast, of the 150 consecutive patients that had sufficient patient material and were included in this study (see Fig. 1 of the previously published manuscript [45]), only 2 (1.3%) were children (age <18 years; data not shown).

Between the start and publication of this study, some antibody assays that performed well in this study (i.e., Enzygnost, Medac, and C6 ELISA) have been taken off the market. This was partly caused by the new, more stringent quality requirements for in vitro diagnostics, which triggered manufacturers to discontinue the production of these assays because of increased costs [54]. This development might result in a movement toward the development of monopolies offering diagnostic assays, limiting the diagnostic repertoire [55] and making the availability of assays vulnerable, as was shown recently during the severe acute respiratory syndrome coronavirus 2 pandemic [56].

The main strengths of this study are the cross-sectional design [53] and the well-defined study population. The results obtained in this study should be confirmed, preferably using a prospective design, aiming at including more patients. Because of the relatively low LNB incidence, this is ideally done in an (inter)national joint collaboration using a multiparameter diagnostic algorithm in an effort to standardize LNB diagnostics. Furthermore, this study shows that the Serion ELISA is a suitable assay for the detection of intrathecal *Borrelia*-specific antibody synthesis, which, to our knowledge, has not been reported before.

In conclusion, this study shows that LNB diagnostics is best supported using an approach that includes the detection of intrathecally produced *Borrelia*-specific antibodies using a Reiber-based AI calculation, two-tier serology on serum, CSF-CXCL13, Reibergram classification, and pleocytosis. Furthermore, a collaborative prospective study is proposed to investigate if a standardized diagnostic algorithm can be developed using multiparameter analysis for improved LNB diagnosis.

MATERIALS AND METHODS

STUDY POPULATION

Retrospectively, and regardless of their clinical presentation and age, all consecutive patients were eligible for inclusion if a CSF sample and a blood sample (drawn within 24 h of the LP) had been sent to the microbiology laboratory of the Diaconessenhuis Hospital, Utrecht, the Netherlands in the period between August 2013 and June 2016. Until the start of this study in 2017, leftover material from these patients had been stored at -20°C and/or -80°C. Prior to the start of this study, all samples had been freeze-thawed once to aliquot for use in the various assays in this study as well as for another study [45], which ran in parallel. Aliquoted samples were stored at -20°C until use. A prerequisite for patients to be included was the availability of at least 1,250 ml of CSF and 110 ml of serum. Patients from whom the CSF was (visually) hemolytic or who had received treatment with intravenous IgG were excluded from the study, as both could interfere with the test results [57, 58]. One patient was excluded because of unreliable test results that implied a sample mix-up. As the final number of LNB patients among the included consecutive patients was limited, we included six patients from outside the predefined study period (from February 2011 to July 2013 and from July 2016 to November 2017) that had been diagnosed with LNB in our hospital. These additional LNB patients had taken part in two other studies of our research group for which only adult patients had been included [43, 44]. Due to these previous studies, both CSF and serum from the time of diagnosis had been stored. For the CSF and serum of these additional LNB patients, the same inclusion criteria applied as for the CSF and serum of all consecutive patients.

All CSF-serum pairs used in this study were anonymized. Approval of the local ethics committee was not necessary, as the main goal of our study was to compare various antibody assays and assess if additional parameters could improve LNB diagnostics for which leftover material can be used. We did, however, obtain approval from the hospital board. The results of this study are reported following the guidelines for diagnostic accuracy studies [59].

CLASSIFICATION OF THE STUDY POPULATION

The EFNS guidelines [5] were used to classify the patients in the current study. Following these guidelines, definite LNB patients should have (i) clinical symptoms suggestive of LNB in the absence of another cause, (ii) CSF pleocytosis (≥ 5 leukocytes/ μl), and (iii) intrathecal synthesis of *Borrelia*-specific antibodies. Possible LNB patients should have clinical symptoms suggestive of LNB with either pleocytosis or intrathecally produced *Borrelia*-specific antibodies. Clinical symptoms

suggestive of LNB (i.e., fulfillment of the first EFNS criterion) were assumed to be present when a request for the detection of intrathecal *Borrelia*-specific antibody synthesis was done at our laboratory at the time of active disease in the past for which the IDEIA LNB IgM and IgG assay (Oxoid, Hampshire, United Kingdom) was used. If the second and/or third criterion (i.e., pleocytosis and intrathecal *Borrelia*-specific antibody synthesis, respectively) was also fulfilled, another cause for the symptoms had to be excluded according to the EFNS guidelines. To minimize the bias in patient classification by using only the IDEIA results, a consensus strategy for proof of intrathecal synthesis of *Borrelia*-specific antibodies was applied. This strategy entailed that intrathecal *Borrelia*-specific antibody synthesis was considered proven only if the majority of the antibody assays tested on CSF-serum pairs in this study showed a pathological *Borrelia*-specific (IgM and/or IgG) AI value (Fig. S1).

BORRELIA-SPECIFIC ANTIBODY DETECTION IN CSF-SERUM PAIRS AND CSF ONLY

Seven commercial antibody assays were selected, which were based on different techniques, different *Borrelia* antigens, and different quantification methods (Table S3). For five assays, referred to here as CSF-serum assays, the detection of intrathecally produced *Borrelia*-specific IgM and/or IgG was done by testing the CSF and serum of each patient simultaneously. Results of these CSF-serum assays were used to calculate a *Borrelia*-specific AI value as described below. For two assays, *Borrelia*-specific IgM and/or IgG antibodies were determined in CSF only and are referred to here as CSF-only assays. The seven antibody assays were performed according to the respective manufacturer's instructions, unless otherwise specified here.

The first CSF-serum assay was the second-generation IDEIA LNB assay (Oxoid), referred to here as IDEIA, for the detection of IgM and IgG (Table S3) [44]. As the IDEIA was part of the routine LNB diagnostics in our hospital, CSF-serum pairs of patients for whom LNB was suspected had already been tested with this assay at the time of active disease in the past. Consequently, these results were retrieved from the laboratory information system. The CSF-serum pairs of patients for which a request for the detection of intrathecal *Borrelia*-specific antibody synthesis was not done at the time of active disease in the past were tested in batch. CSF-serum pairs were tested only in the singular due to the limited amount of sample material, except CSF-serum pairs for which the CSF sample had an optical density (OD) value of ≥ 0.100 , which were repeated. The second CSF-serum assay was the *Borrelia* ELISA Medac (Medac GmbH, Hamburg, Germany), referred to here as Medac ELISA, for the detection of IgM and IgG (Table S3). The third CSF-serum assay was the *recomBead Borrelia* 2.0 multiplex bead-assay (Mikrogen Diagnostik GmbH, Neuried, Germany), referred to here as the *recomBead* assay, for the detection of IgM and IgG (Table S3). For both the Medac ELISA and the *recomBead* assay, CSF-serum pairs with an equivocal AI value ($1.3 \leq \text{AI} < 1.5$) should have been repeated following the manufacturers' protocol (Table S3), but this was not done due to limited sample material. The fourth CSF-serum assay tested was the *Borrelia burgdorferi* SERION ELISA classic (Institute Virion/Serion GmbH, Würzburg, Germany), referred to here as Serion ELISA, for the detection of IgM and IgG (Table S3). The fifth CSF-serum assay was the Enzygnost Borreliosis/IgM ELISA (Siemens Healthcare Diagnostics, Marburg, Germany) and the Enzygnost Lyme link VlsE/IgG ELISA (Siemens Healthcare Diagnostics), referred to here as the Enzygnost ELISA (Table S3). CSF-serum pairs were tested using an adapted protocol we described previously [60], as an edge effect was established for the Enzygnost IgG ELISA following the standard protocol of the manufacturer. This adapted protocol was also used for the Enzygnost IgM ELISA, for which an edge effect was established as well (data not published).

The first CSF-only assay was the C6 ELISA (Immunetics, Boston, MA, USA), which measures total Ig (IgM and IgG) (Table S3) [61]. The protocol of the manufacturer describes its use only for serum. This protocol was used to test the CSF using a 1:5 dilution, similar to the CSF dilution used by van Burgel et al. [40]. The second CSF-only assay was the *recomLine* IB (Mikrogen GmbH) for the

detection of IgM and IgG (Table S3). For practical reasons, we used the manufacturer's protocol for serum to test the CSF. For testing CSF, however, we used a 1:10 dilution for IgM and a 1:20 dilution for IgG (for serum, a 1:51 dilution for IgM and a 1:101 dilution for IgG is recommended). In January 2019, the manufacturer of the *recomLine* IB revised the interpretation of the *recomLine* IgG IB (Table S3). Both the old and revised interpretation criteria were investigated in the current study [62, 63]; however, only the revised interpretation criteria were elaborated on throughout the article. For both the C6 ELISA and the *recomLine* IB, equivocal results were interpreted as positive.

All ELISAs were performed on a Dynex DS2 automated ELISA instrument (Dynex Technologies, Chantilly, VA, USA) and analyzed with the DS-Matrix software (Dynex Technologies). The *recomBead* assay was performed on a Bio-Plex 200 instrument using the Luminex xMAP technology (Bio-Rad Laboratories, Hercules, CA, USA) and the Bio-Plex Manager software version 6.1 (Bio-Rad Laboratories). The *recomLine* IB was performed on an Autoblot 3000 (Medtec Biolab Equipment, Hillsborough, NC, USA). Subsequently, *recomLine* IB strips were scanned and the intensity of the bands was recorded using *recomScan* software version 3.4 (Mikrogen GmbH).

BLOOD-CSF BARRIER FUNCTIONALITY AND INTRATHECAL TOTAL-ANTIBODY SYNTHESIS

To investigate the blood-CSF barrier functionality and the intrathecal total IgM and total IgG synthesis, CSF and serum concentrations of albumin, total IgM, and total IgG were determined at the start of this study by nephelometry and used to calculate the CSF/serum quotients for Q Alb, total IgM (Q IgM), and total IgG (Q IgG) as described previously [45]. The Q Alb is used to assess the functionality of the blood-CSF barrier as albumin originates from the blood, and a dysfunctional blood-CSF barrier is proven if the Q Alb exceeds the age-dependent Q Alb [10]. The Q IgM and Q IgG are used to assess intrathecal total-antibody synthesis. If either one or both quotients show a larger increase than the Q Alb and the intrathecal fraction of total IgM and/or total IgG is larger than 10%, then intrathecal total-antibody synthesis is proven [64].

CALCULATION OF THE *BORRELIA*-SPECIFIC AI

For the CSF-serum pairs, either one of two calculation methods was used to calculate the *Borrelia*-specific IgM and IgG AI value (Table S3). For the IDEIA, intrathecal *Borrelia*-specific antibody synthesis was proven if the fraction of *Borrelia*-specific IgM (or IgG) in the CSF as part of the total amount of IgM (or IgG) in the CSF exceeded that of serum, which is expressed by a *Borrelia*-specific IgM (or IgG) AI value (Table S3). Following the manufacturer's protocol, a *Borrelia*-specific AI value of ≥ 0.3 was considered pathological, and a *Borrelia*-specific AI value of < 0.3 (or an OD value of CSF of < 0.150) was considered normal. Because the IDEIA is based on a capture ELISA, a correction for a dysfunctional blood-CSF barrier was not necessary [15]. For the other four CSF-serum assays, intrathecal *Borrelia*-specific antibody synthesis was proven by the calculation of a *Borrelia*-specific IgM and IgG AI value according to Reiber and Peter [10]. These *Borrelia*-specific AI values were calculated by dividing the CSF/serum quotient of *Borrelia*-specific IgM (or IgG) by Q IgM (or Q IgG) by considering the blood-CSF barrier functionality. As the interpretation criteria shown in Table S3 differed slightly between the four CSF-serum assays, the cutoff for intrathecal pathogen-specific (IgM and/or IgG) antibody synthesis as described by Reiber was used [65]. Thus, *Borrelia*-specific AI values of ≥ 1.5 are considered pathological, *Borrelia*-specific AI values between 0.6 and 1.3 are considered normal, and *Borrelia*-specific AI values of < 0.5 are not valid. In the current study, *Borrelia*-specific AI values between 1.3 and 1.5 were considered normal. Furthermore, *Borrelia*-specific AI values were used only if these were above the assay-specific lower cutoff (Table S3).

BORRELIA-SPECIFIC ANTIBODY DETECTION IN SERUM

Borrelia-specific antibodies in serum were determined previously using a two-tier protocol in which the C6 ELISA was used as a screening test and equivocal and positive C6 ELISA results were confirmed using the *recomLine* IB [45]. The *recomLine* IB was also performed on C6 ELISA negative sera in order to compare the *recomLine* IB results obtained in CSF with those obtained in serum to gain insight into the origin of the *Borrelia*-specific antibodies. Similar to the *recomLine* IgG IB performed on CSF, for serum we also applied the old and revised interpretation criteria of the *recomLine* IgG IB (Table S3) [62, 63]; however, only the revised interpretation criteria were elaborated on throughout the article.

CLINICAL SYMPTOMS AND ADDITIONAL PARAMETERS

Results from a number of other parameters, obtained at the time of active disease in the past, were retrieved from the patient and/or laboratory information system. These results included information about clinical symptoms, total protein and glucose concentrations in the CSF, and CSF leukocyte counts. For CSF samples with elevated erythrocyte counts (i.e., $\geq 1,000$ erythrocytes/ μL), the CSF leukocyte count was corrected by subtracting 1 leukocyte/ μL for each 1,000 erythrocytes/ μL according to Reiber and Peter [10]. For patients classified as definite or possible LNB patient, information regarding symptom duration and antibiotic treatment for LNB was retrieved from the patient information system.

An in-house *Borrelia* species PCR and two CXCL13 assays on CSF had been performed previously, of which the respective methods and results have been published [45]. For the current study, the final CSF-CXCL13 result was based on the combined result of the two CXCL13 assays and was considered negative when either one or both assays were negative and positive when both assays were positive.

STATISTICAL ANALYSIS

For all assays that determined IgM and IgG separately, the overall Ig results were based on a combination of the results of both immunoglobulins: negative when both IgM and IgG were negative and positive when at least one of these was positive. For all statistical analyses, Rstudio (version 1.4.1717, 2009 to 2021) was used [66]. We analyzed all data by performing two-group comparisons. The Fisher's exact test for count data was used for unpaired nominal data, the McNemar's chi-squared test with continuity correction was used for paired nominal data, and the exact Wilcoxon-Mann-Whitney test was used for quantitative unpaired data in a 2 by 2 table using the "stats" package [67]. Unpaired nominal data in a 2 by 4 table were analyzed with the approximate Monte Carlo resampling 10^6 Pearson's chi-squared test using the "coin" package [68]. Depending on the distribution, either the (geometric) mean value with the 95% CI or the median value and range were shown. Raw P values of <0.050 were statistically significant; however, they were interpreted after correction for the multiple statistical analyses in this study, for which the Benjamini-Hochberg procedure (BH) was applied [69]. The false-discovery rate (FDR) was set at the level of 2.0% (i.e., less than one false-positive test result was allowed in our list of rejections).

For each antibody assay, the sensitivity, specificity, PPV, and NPV with 95% CIs were calculated using the "epiR" package [70], for which definite and possible LNB patients were used as cases and all non-LNB patients were used as controls.

To investigate if the diagnostic performance using the antibody assays could be improved by including the results of other parameters, RF modeling was performed to predict LNB [71]. For each antibody assay, an RF model was built using the "randomForest" package [72] which included 13 predictor variables. The first six predictor variables comprised (i) one of the seven

antibody assays (negative/positive), (ii) two-tier serology on serum (negative/positive), (iii) pleocytosis (no/yes), (iv) CSF-CXCL13 (negative/positive), (v) elevated total protein in CSF (no/yes), and (vi) *Borrelia* species PCR on CSF (negative/positive). Blood-CSF barrier functionality and intrathecal total-antibody synthesis were also included in the RF models for which the previously published Reibergram classification was used [45]. In short, all patients included in this study were classified to one of four of the five Reibergram areas: Reibergram area 1, a normal blood-CSF barrier without intrathecal total IgM and/or IgG synthesis of >10% ($n = 107/156$), Reibergram area 2, a dysfunctional blood-CSF barrier without intrathecal total IgM and/or IgG synthesis of >10% ($n = 25/156$), Reibergram area 3, a dysfunctional blood-CSF barrier with intrathecal total IgM and/or IgG synthesis of >10% ($n = 9/156$), and Reibergram area 4, intrathecal total IgM and/or IgG synthesis of >10% with a normal blood-CSF barrier ($n = 15/156$) (Table S2). Subsequently, seven predictor variables were constructed based on one or multiple Reibergram areas (Table 6).

For all RF models, definite and possible LNB patients were defined as cases and all non-LNB patients were defined as controls. In total, 10^5 decision trees were built, and for each tree node, three predictor variables were used to split the tree. The predictions obtained in each RF model were used to construct a receiver operating characteristic (ROC) curve, which was subsequently used to calculate the AUC. For each RF model, the optimal cutoff for predicting LNB was calculated using the point on the ROC curve closest to the upper left corner, where both sensitivity and specificity are 100%, and this was determined by the square root of $[(1-\text{sensitivity})^2 + (1-\text{specificity})^2]$. Using the optimal cutoff value, the sensitivity, specificity, PPV, and NPV of each RF model were calculated. As the performance characteristics are based on predictions, 95% CIs were not calculated. For each RF model, the probability of misclassification and the relative importance of each predictor variable were calculated as described by Liaw and Wiener [72]. For each RF model, the relative importance of the 13 predictor variables was made visible by construction of a heat map. Subsequently, for each RF model, the predictor variables were ranked from 1 (highest relative contribution) to 13 (lowest relative contribution). These ranks were then used to calculate the mean rank of each predictor variable for the seven RF models to assess the importance of each predictor variable in predicting LNB.

ACKNOWLEDGEMENTS

We thank the Dutch Ministry of Health, Welfare and Sports for their financial contribution. The funder had no role in the study design, data collection and interpretation, or the decision to submit the work for publication. We thank José A. Ferreira from the Department of Statistics, Informatics and Mathematical Modeling of the Dutch National Institute for Public Health and the Environment for support with the statistical analyses and Timo Versijde from Siemens Healthcare, the Netherlands for help with performing nephelometry.

REFERENCES

1. Steere AC, Strle F, Wormser GP, Hu LT, Branda JA, Hovius JW, Li X, Mead PS. 2016. Lyme borreliosis. *Nat Rev Dis Primers* 2:16090. doi: 10.1038/nrdp.2016.90.
2. Stanek G, Strle F. 2008. Lyme disease: European perspective. *Infect Dis Clin North Am* 22:327-39, vii. doi: 10.1016/j.idc.2008.01.001.
3. Stanek G, Wormser GP, Gray J, Strle F. 2012. Lyme borreliosis. *Lancet* 379:461-73. doi: 10.1016/S0140-6736(11)60103-7.
4. Enkelmann J, Bohmer M, Fingerle V, Siffczyk C, Werber D, Littmann M, Merbecks SS, Helmeke C, Schroeder S, Hell S, Schlotthauer U, Burckhardt F, Stark K, Schielke A, Wilking H. 2018. Incidence of notified Lyme borreliosis in Germany, 2013-2017. *Sci Rep* 8:14976. doi: 10.1038/s41598-018-33136-0.
5. Mygland A, Ljostad U, Fingerle V, Rupprecht T, Schmutzhard E, Steiner I. 2010. EFNS guidelines on the diagnosis and management of European Lyme neuroborreliosis. *Eur J Neurol* 17:8-4. doi: 10.1111/j.1468-1331.2009.02862.x.
6. Schwartz AM, Hinckley AF, Mead PS, Hook SA, Kugeler KJ. 2017. Surveillance for Lyme Disease - United States, 2008-2015. *MMWR Surveill Summ* 66:1-12. doi: 10.15585/mmwr.ss6622a1.
7. Dahl V, Wisell KT, Giske CG, Tegnell A, Wallensten A. 2019. Lyme neuroborreliosis epidemiology in Sweden 2010 to 2014: clinical microbiology laboratories are a better data source than the hospital discharge diagnosis register. *Euro Surveill* 24. doi: 10.2807/1560-7917.ES.2019.24.20.1800453.
8. Koedel U, Fingerle V, Pfister HW. 2015. Lyme neuroborreliosis-epidemiology, diagnosis and management. *Nat Rev Neurol* 11:446-56. doi: 10.1038/nrneurol.2015.121.
9. Hofhuis A, Harms M, Bennema S, van den Wijngaard CC, van Pelt W. 2015. Physician reported incidence of early and late Lyme borreliosis. *Parasit Vectors* 8:161. doi: 10.1186/s13071-015-0777-6.
10. Reiber H, Peter JB. 2001. Cerebrospinal fluid analysis: disease-related data patterns and evaluation programs. *J Neurol Sci* 184:101-22. doi: 10.1016/s0022-510x(00)00501-3.
11. Ljostad U, Skarpaas T, Mygland A. 2007. Clinical usefulness of intrathecal antibody testing in acute Lyme neuroborreliosis. *Eur J Neurol* 14:873-6. doi: 10.1111/j.1468-1331.2007.01799.x.
12. Blanc F, Jaulhac B, Fleury M, de Seze J, de Martino SJ, Remy V, Blaison G, Hansmann Y, Christmann D, Tranchant C. 2007. Relevance of the antibody index to diagnose Lyme neuroborreliosis among seropositive patients. *Neurology* 69:953-8. doi: 10.1212/01.wnl.0000269672.17807.e0.
13. Cerar T, Strle F, Stupica D, Ruzic-Sabljic E, McHugh G, Steere AC, Strle K. 2016. Differences in Genotype, Clinical Features, and Inflammatory Potential of *Borrelia burgdorferi* sensu stricto Strains from Europe and the United States. *Emerg Infect Dis* 22:818-27. doi: 10.3201/eid2205.151806.
14. Djukic M, Schmidt-Samoa C, Lange P, Spreer A, Neubieser K, Eiffert H, Nau R, Schmidt H. 2012. Cerebrospinal fluid findings in adults with acute Lyme neuroborreliosis. *J Neurol* 259:630-6. doi: 10.1007/s00415-011-6221-8.
15. Hansen K, Lebech AM. 1991. Lyme neuroborreliosis: a new sensitive diagnostic assay for intrathecal synthesis of *Borrelia burgdorferi*-specific immunoglobulin G, A, and M. *Ann Neurol* 30:197-205. doi: 10.1002/ana.410300212.
16. Kaiser R, Rauer S. 1998. Analysis of the intrathecal immune response in neuroborreliosis to a sonicate antigen and three recombinant antigens of *Borrelia burgdorferi* sensu stricto. *Eur J Clin Microbiol Infect Dis* 17:159-66. doi: 10.1007/BF01691111.
17. Ogrinc K, Lusa L, Lotrič-Furlan S, Bogovič P, Stupica D, Cerar T, Ružič-Sabljic E, Strle F. 2016. Course and outcome of early European Lyme neuroborreliosis (Bannwarth syndrome):

- clinical and laboratory findings. *Reviews of Infectious Diseases* 63:346-353. doi: 10.1093/cid/ciw299.
18. Cerar T, Ogrinc K, Strle F, Ruzic-Sabljic E. 2010. Humoral immune responses in patients with Lyme neuroborreliosis. *Clin Vaccine Immunol* 17:645-50. doi: 10.1128/CVI.00341-09.
 19. Craft JE, Fischer DK, Shimamoto GT, Steere AC. 1986. Antigens of *Borrelia burgdorferi* recognized during Lyme disease. Appearance of a new immunoglobulin M response and expansion of the immunoglobulin G response late in the illness. *J Clin Invest* 78:934-9. doi: 10.1172/JCI112683.
 20. Arumugam S, Nayak S, Williams T, di Santa Maria FS, Guedes MS, Chaves RC, Linder V, Marques AR, Horn EJ, Wong SJ. 2019. A multiplexed serologic test for diagnosis of Lyme disease for point-of-care use. *Journal of clinical microbiology* 57:e01142-19. doi: 10.1128/JCM.01142-19.
 21. Zajkowska J, Lelental N, Kulakowska A, Mroczko B, Pancewicz S, Bucki R, Kornhuber J, Lewczuk P. 2015. Application of multiplexing technology to the analysis of the intrathecally released immunoglobulins against *B. burgdorferi* antigens in neuroborreliosis. *Immunol Lett* 168:58-63. doi: 10.1016/j.imlet.2015.07.001.
 22. Kaiser R. 2000. False-negative serology in patients with neuroborreliosis and the value of employing of different borrelial strains in serological assays. *J Med Microbiol* 49:911-915. doi: 10.1099/0022-1317-49-10-911.
 23. Wutte N, Archelos J, Crowe BA, Zenz W, Daghofer E, Fazekas F, Aberer E. 2014. Laboratory diagnosis of Lyme neuroborreliosis is influenced by the test used: comparison of two ELISAs, immunoblot and CXCL13 testing. *J Neurol Sci* 347:96-103. doi: 10.1016/j.jns.2014.09.027.
 24. Henningsson AJ, Christiansson M, Tjernberg I, Lofgren S, Matussek A. 2014. Laboratory diagnosis of Lyme neuroborreliosis: a comparison of three CSF anti-*Borrelia* antibody assays. *Eur J Clin Microbiol Infect Dis* 33:797-803. doi: 10.1007/s10096-013-2014-6.
 25. Roessler D, Hauser U, Wilske B. 1997. Heterogeneity of BmpA (P39) among European isolates of *Borrelia burgdorferi* sensu lato and influence of interspecies variability on serodiagnosis. *Journal of clinical microbiology* 35:2752-2758. doi: 10.1128/jcm.35.11.2752-2758.1997.
 26. Wang G, van Dam AP, Schwartz I, Dankert J. 1999. Molecular typing of *Borrelia burgdorferi* sensu lato: taxonomic, epidemiological, and clinical implications. *Clin Microbiol Rev* 12:633-53. doi: 10.1128/CMR.12.4.633.
 27. Ornstein K, Berglund J, Bergstrom S, Norrby R, Barbour AG. 2002. Three major Lyme *Borrelia* genospecies (*Borrelia burgdorferi* sensu stricto, *B. afzelii* and *B. garinii*) identified by PCR in cerebrospinal fluid from patients with neuroborreliosis in Sweden. *Scandinavian journal of infectious diseases* 34:341-346. doi: 10.1080/00365540110080313.
 28. Hansen K, Crone C, Kristoferitsch W. 2013. Lyme neuroborreliosis. *Handb Clin Neurol* 115:559-75. doi: 10.1016/B978-0-444-52902-2.00032-1.
 29. Margos G, Vollmer SA, Ogden NH, Fish D. 2011. Population genetics, taxonomy, phylogeny and evolution of *Borrelia burgdorferi* sensu lato. *Infect Genet Evol* 11:1545-63. doi: 10.1016/j.meegid.2011.07.022.
 30. Brisson D, Baxamusa N, Schwartz I, Wormser GP. 2011. Biodiversity of *Borrelia burgdorferi* strains in tissues of Lyme disease patients. *PLoS One* 6:e22926. doi: 10.1371/journal.pone.0022926.
 31. Zhang JR, Hardham JM, Barbour AG, Norris SJ. 1997. Antigenic variation in Lyme disease *Borreliae* by promiscuous recombination of VMP-like sequence cassettes. *Cell* 89:275-85. doi: 10.1016/s0092-8674(00)80206-8.
 32. Baig S, Olsson T, Hansen K, Link H. 1991. Anti-*Borrelia burgdorferi* antibody response over the course of Lyme neuroborreliosis. *Infect Immun* 59:1050-6. doi: 10.1128/iai.59.3.1050-1056.1991.

33. Steere AC. 1993. Seronegative Lyme disease. JAMA 270:1369. doi: 10.1001/jama.270.11.1369b.
34. Hammers-Berggren S, Hansen K, Lebech AM, Karlsson M. 1993. *Borrelia burgdorferi*-specific intrathecal antibody production in neuroborreliosis: a follow-up study. Neurology 43:169-75. doi: 10.1212/wnl.43.1_part_1.169.
35. Halperin JJ. 2019. Lyme neuroborreliosis. Curr Opin Infect Dis 32:259-264. doi: 10.1097/QCO.0000000000000545.
36. Lebech AM, Hansen K, Brandrup F, Clemmensen O, Halkier-Sorensen L. 2000. Diagnostic value of PCR for detection of *Borrelia burgdorferi* DNA in clinical specimens from patients with erythema migrans and Lyme neuroborreliosis. Mol Diagn 5:139-50. doi: 10.1007/BF03262032.
37. Skogman BH, Lager M, Henningsson AJ, Tjernberg I. 2017. The *recomBead Borrelia* antibody index, CXCL13 and total IgM index for laboratory diagnosis of Lyme neuroborreliosis in children. Eur J Clin Microbiol Infect Dis 36:2221-2229. doi: 10.1007/s10096-017-3049-x.
38. Stanek G, Lusa L, Ogrinc K, Markowicz M, Strle F. 2014. Intrathecally produced IgG and IgM antibodies to recombinant VlsE, VlsE peptide, recombinant OspC and whole cell extracts in the diagnosis of Lyme neuroborreliosis. Med Microbiol Immunol 203:125-32. doi: 10.1007/s00430-013-0322-1.
39. Skarpaas T, Ljostad U, Sobyte M, Mygland A. 2007. Sensitivity and specificity of a commercial C6 peptide enzyme immuno assay in diagnosis of acute Lyme neuroborreliosis. Eur J Clin Microbiol Infect Dis 26:675-7. doi: 10.1007/s10096-007-0336-y.
40. van Burgel ND, Brandenburg A, Gerritsen HJ, Kroes AC, van Dam AP. 2011. High sensitivity and specificity of the C6-peptide ELISA on cerebrospinal fluid in Lyme neuroborreliosis patients. Clin Microbiol Infect 17:1495-500. doi: 10.1111/j.1469-0691.2011.03459.x.
41. Vermeersch P, Ressler S, Nackers E, Lagrou K. 2009. The C6 Lyme antibody test has low sensitivity for antibody detection in cerebrospinal fluid. Diagn Microbiol Infect Dis 64:347-9. doi: 10.1016/j.diagmicrobio.2009.03.013.
42. Rupprecht TA, Manz KM, Fingerle V, Lechner C, Klein M, Pfirrmann M, Koedel U. 2018. Diagnostic value of cerebrospinal fluid CXCL13 for acute Lyme neuroborreliosis. A systematic review and meta-analysis. Clin Microbiol Infect 24:1234-1240. doi: 10.1016/j.cmi.2018.04.007.
43. van Gorkom T, Sankatsing SUC, Voet W, Ismail DM, Muilwijk RH, Salomons M, Vlamincx BJM, Bossink AWJ, Notermans DW, Bouwman JJM, Kremer K, Thijsen SFT. 2018. An Enzyme-Linked Immunosorbent Spot Assay Measuring *Borrelia burgdorferi* B31-Specific Interferon Gamma-Secreting T Cells Cannot Discriminate Active Lyme Neuroborreliosis from Past Lyme Borreliosis: a Prospective Study in the Netherlands. J Clin Microbiol 56. doi: 10.1128/JCM.01695-17.
44. van Gorkom T, Voet W, Sankatsing SUC, Nijhuis CDM, Ter Haak E, Kremer K, Thijsen SFT. 2020. Prospective comparison of two enzyme-linked immunosorbent spot assays for the diagnosis of Lyme neuroborreliosis. Clin Exp Immunol 199:337-356. doi: 10.1111/cei.13393.
45. van Gorkom T, van Arkel GHJ, Heron M, Voet W, Thijsen SFT, Kremer K. 2021. The Usefulness of Two CXCL13 Assays on Cerebrospinal Fluid for the Diagnosis of Lyme Neuroborreliosis: a Retrospective Study in a Routine Clinical Setting. J Clin Microbiol 59:e0025521. doi: 10.1128/JCM.00255-21.
46. Skogman BH, Croner S, Forsberg P, Ernerudh J, Lahdenne P, Sillanpaa H, Seppala I. 2008. Improved laboratory diagnostics of Lyme neuroborreliosis in children by detection of antibodies to new antigens in cerebrospinal fluid. Pediatr Infect Dis J 27:605-12. doi: 10.1097/INF.0b013e31816a1e29.
47. Picha D, Moravcova L, Smiskova D. 2016. Prospective study on the chemokine CXCL13

- in neuroborreliosis and other aseptic neuroinfections. *J Neurol Sci* 368:214-20. doi: 10.1016/j.jns.2016.05.059.
48. Henningsson AJ, Gyllemark P, Lager M, Skogman BH, Tjernberg I. 2016. Evaluation of two assays for CXCL13 analysis in cerebrospinal fluid for laboratory diagnosis of Lyme neuroborreliosis. *Apmis* 124:985-990. doi: 10.1111/apm.12596.
 49. Aguero-Rosenfeld ME, Wang G, Schwartz I, Wormser GP. 2005. Diagnosis of Lyme borreliosis. *Clin Microbiol Rev* 18:484-509. doi: 10.1128/CMR.18.3.484-509.2005.
 50. Blatz R, Kuhn HJ, Hermann W, Rytter M, Rodloff AC. 2005. [Neurosyphilis and neuroborreliosis. Retrospective evaluation of 22 cases]. *Nervenarzt* 76:724-32. doi: 10.1007/s00115-004-1840-2.
 51. Tumani H, Nolker G, Reiber H. 1995. Relevance of cerebrospinal fluid variables for early diagnosis of neuroborreliosis. *Neurology* 45:1663-70. doi: 10.1212/wnl.45.9.1663.
 52. Kwaliteitsinstituut voor de Gezondheidszorg (CBO). 2013. Dutch guidelines Lyme disease 2013. Available at [In Dutch]: <https://www.rivm.nl/nieuws/cbo-richtlijn-lymeziekte-definitief>.
 53. Leeflang MMG, Ang CW, Berkhout J, Bijlmer HA, Van BW, Brandenburg AH, van Burgel ND, van Dam AP, Dessau RB, Fingerle V, Hovius JWR, Jaulhac B, Meijer B, Van PW, Schellekens JFP, Spijker R, Stelma FF, Stanek G, Verduyn-Lunel F, Zeller H, Sprong H. 2016. The diagnostic accuracy of serological tests for Lyme borreliosis in Europe: a systematic review and meta-analysis. *BMC Infect Dis* 16. doi: 10.1186/s12879-016-1468-4.
 54. Regulation (EU) 2017/746 of the European Parliament and of the Council of 5 April 2017 on in vitro diagnostic medical devices and repealing Directive 98/79/EC and Commission Decision 2010/227/EU. L117: 176-332. Available at: <https://data.europa.eu/eli/reg/2017/746/oj>. Accessed 2021-03-03. Official Journal of the European Union.
 55. Cobbaert C, Capoluongo ED, Vanstapel F, Bossuyt PMM, Bhattoa HP, Nissen PH, Orth M, Streichert T, Young IS, Macintyre E, Fraser AG, Neumaier M. 2021. Implementation of the new EU IVD regulation - urgent initiatives are needed to avert impending crisis. *Clin Chem Lab Med*. doi: 10.1515/cclm-2021-0975.
 56. Ragan KB, Bhadra S, Choi JH, Towers D, Sullivan CS, Ellington AD. 2020. Comparison of media and standards for SARS-CoV-2 RT-qPCR without prior RNA preparation. *medRxiv*. doi: 10.1101/2020.08.01.20166173.
 57. Schwenkenbecher P, Janssen T, Wurster U, Konen FF, Neyazi A, Ahlbrecht J, Puppe W, Bonig L, Suhs KW, Stangel M, Ganzenmueller T, Skripuletz T. 2019. The Influence of Blood Contamination on Cerebrospinal Fluid Diagnostics. *Front Neurol* 10:584. doi: 10.3389/fneur.2019.00584.
 58. van der Bij AK, Pruissen DMO, Sankatsing SUC, van Houte AJ. 2020. Intravenous immunoglobulin remain a source of bias in the interpretation of infectious disease serology among clinicians. *J Microbiol Immunol Infect* 53:1042-1043. doi: 10.1016/j.jmii.2019.08.003.
 59. Bossuyt PM, Reitsma JB, Bruns DE, Gatsonis CA, Glasziou PP, Irwig L, Lijmer JG, Moher D, Rennie D, de Vet HC, Kressel HY, Rifai N, Golub RM, Altman DG, Hooft L, Korevaar DA, Cohen JF, Group S. 2015. STARD 2015: An Updated List of Essential Items for Reporting Diagnostic Accuracy Studies. *Clin Chem* 61:1446-52. doi: 10.1373/clinchem.2015.246280.
 60. van Gorkom T, van Arkel GHJ, Voet W, Thijsen SFT, Kremer K. 2021. Consequences of the Edge Effect in a Commercial Enzyme-Linked Immunosorbent Assay for the Diagnosis of Lyme Neuroborreliosis. *J Clin Microbiol* 59:e0328020. doi: 10.1128/JCM.03280-20.
 61. Liang FT, Steere AC, Marques AR, Johnson BJ, Miller JN, Philipp MT. 1999. Sensitive and specific serodiagnosis of Lyme disease by enzyme-linked immunosorbent assay with a peptide based on an immunodominant conserved region of *Borrelia burgdorferi* vlsE. *J Clin Microbiol* 37:3990-3996. doi: 10.1128/JCM.37.12.3990-3996.1999.
 62. Mikrogen Diagnostik GmbH, Neuried, Germany. Instruction manual *recomLine* IgM and

- IgG. July 2013.
63. Mikrogen Diagnostik GmbH, Neuried, Germany. Instruction manual *recomLine* IgM and IgG. January 2019.
 64. Reiber H. 1995. External quality assessment in clinical neurochemistry: survey of analysis for cerebrospinal fluid (CSF) proteins based on CSF/serum quotients. *Clin Chem* 41:256-63. doi: 10.1093/clinchem/41.2.256.
 65. Reiber H. 2016. Knowledge-base for interpretation of cerebrospinal fluid data patterns. Essentials in neurology and psychiatry. *Arq Neuropsiquiatr* 74:501-12. doi: 10.1590/0004-282X20160066.
 66. RStudio. Integrated Development Environment for R. RStudio, PBC, Boston, MA, USA. <https://www.rstudio.com>.
 67. R Core Team (2021). R: A language and environment for statistical computing. R Foundation for Statistical Computing, Vienna, Austria. <https://www.R-project.org/>.
 68. Hothorn T, Hornik K, van de Wiel MA, Zeileis A. 2008. Implementing a Class of Permutation Tests: The coin Package. *Journal of Statistical Software* 28:23. doi: 10.18637/jss.v028.i08.
 69. Benjamini Y, Hochberg Y. 1995. Controlling the false discovery rate: a practical and powerful approach to multiple testing. *Journal of the Royal Statistical Society Series B (Methodological)* 57:289-300. doi: 10.2307/2346101.
 70. R documentation. Tools for the Analysis of Epidemiological Data. R Foundation for Statistical Computing, Vienna, Austria. <https://www.rdocumentation.org/packages/epiR/versions/2.0.19>.
 71. Breiman L. 2001. Random Forests. *Machine Learning* 45:5-32. doi: 10.1023/a:1010933404324.
 72. Liaw A, Wiener M. 2002. Classification and regression by randomForest. *R news* 2:18-22. <https://CRAN.R-project.org/doc/Rnews/>.
 73. Kooijmans H, Mohrmann M, Smeets LC, Souverijn JHM, Tox GHM. 2013. [Handboek "Medische laboratoriumdiagnostiek". Uitgever: Prelum uitgevers, Houten, 2e editie 2013].

SUPPLEMENTAL MATERIAL

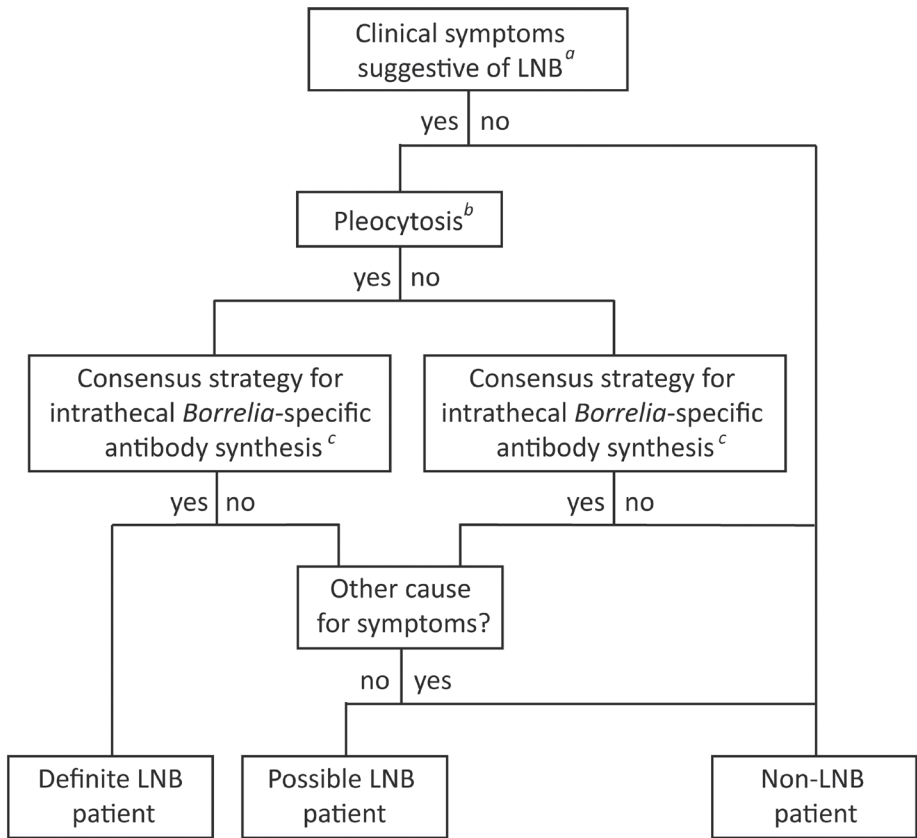


Fig. S1. Flow chart used to classify the 156 patients included in this study into definite and possible Lyme neuroborreliosis (LNB) and non-LNB patients based on the criteria defined by the European Federation of Neurological Societies (EFNS) [1] and consensus strategy for proof of intrathecal *Borrelia*-specific antibody synthesis.

- a. Clinical symptoms suggestive of LNB were assumed to be present when a request for the detection of intrathecal *Borrelia*-specific antibody synthesis was done at our laboratory at the time of active disease in the past for which the IDEIA LNB IgM and IgG assay (Oxoid, Hampshire, United Kingdom) was used.
- b. Pleocytosis was based on a CSF leucocyte count ≥ 5 leucocytes/ μ l.
- c. The consensus strategy entailed that intrathecal *Borrelia*-specific antibody synthesis was only considered proven if the majority of the CSF-serum assays under investigation (i.e., IDEIA, Medac ELISA, *recom*Bead assay, Serion ELISA and Enzygnost ELISA) showed a pathological *Borrelia*-specific IgM and/or IgG antibody index value (≥ 1.5).

Possible LNB																		
n=4	1																	
	1																	
	1 ^a																	
	1 ^a																	
n=3	1																	
	1																	
	1																	
	1																	
Total	7	7	4	3	1	4	3	3	5	6	1 ^a	7	6	0	1	0	3	3
	area 1: n=2																	
	area 2: n=2																	
	area 3: n=1																	
area 4: n=2																		
non-LNB																		
n=3	1																	
	1																	
	1																	
	1																	
n=36	1																	
	1																	
	1																	
	1																	
n=36	1																	
	1																	
	1																	
	1																	
n=19	1																	
	1																	
	1																	
	1																	
n=19	1																	
	1																	
	1																	
	1																	
n=19	1																	
	1																	
	1																	
	1																	
n=19	1																	
	1																	
	1																	
	1																	
n=19	1																	
	1																	
	1																	
	1																	
n=19	1																	
	1																	
	1																	
	1																	
n=19	1																	
	1																	
	1																	
	1																	
n=19	1																	
	1																	
	1																	
	1																	
n=19	1																	
	1																	
	1																	
	1																	
n=19	1																	
	1																	
	1																	
	1																	
n=19	1																	
	1																	
	1																	
	1																	
n=19	1																	
	1																	
	1																	
	1																	
n=19	1																	
	1																	
	1																	
	1																	
n=19	1																	
	1																	
	1																	
	1																	
n=19	1																	
	1																	
	1																	
	1																	
n=19	1																	
	1																	
	1																	
	1																	
n=19	1																	
	1																	
	1																	
	1																	
n=19	1																	
	1																	
	1																	
	1																	
n=19	1																	
	1																	
	1																	
	1																	
n=19	1																	
	1																	
	1																	
	1																	
n=19	1																	
	1																	
	1																	
	1																	
n=19	1																	
	1																	
	1																	
	1																	
n=19	1																	
	1																	
	1																	
	1																	
n=19	1																	
	1																	
	1																	
	1																	
n=19	1																	
	1																	
	1																	
	1																	
n=19	1																	
	1																	
	1																	
	1																	
n=19	1																	
	1																	
	1																	
	1																	
n=19	1																	
	1																	
	1																	
	1																	
n=19	1																	
	1																	
	1																	
	1																	
n=19	1																	
	1																	
	1																	
	1																	
n=19	1																	
	1																	
	1																	
	1																	
n=19	1																	
	1																	
	1																	
	1																	
n=19	1													</				

Table S2. Continue.

Study group	No. of patients ^a	Presence of clinical symptoms suggestive of LNB ^c	Pleocytosis (≥5 leucocytes/ μ l)	Consensus strategy ^d	Intrathecal <i>Borrelia</i> -specific antibody synthesis					Two-tier serology on serum ^e	Clinical symptoms / diagnosis ^h	Symptom duration ⁱ	Antibiotic treatment for LNB ^j			
					CSF-serum assays			CSF-only assays								
					IDeIA	Medac ELISA	recomBead assay	Serion ELISA	Enzygnost ELISA					C6 ELISA	recomline immunoblot ^f	C6 ELISA
n=81	1		1/5													
	2		1/5													
	1		0/5								NP ^g					
	7		0/5													
	3		0/5													
	3		0/5													
	3		0/5													
	1		0/5													
	2		0/5								NP ^g					
	58		0/5													
Total	139	39	22	0	0	0	4	6	4	5	5 ^o	38	31 ^e (+4 ^h)	14		
Total (all patients)	156	56	36	13	8	14	17	18	14	21	14 ^o	55	46 ^o (+4 ^h)	24		

explained as follows: area 1, a normal blood-CSF barrier without intrathecal total-antibody synthesis; area 2, a dysfunctional blood-CSF barrier without intrathecal total-antibody synthesis; area 3, a dysfunctional blood-CSF barrier with intrathecal total-antibody synthesis, the results of which have been published previously [3].

- h. Clinical symptoms for patients who had a pathological IgM and/or IgG AI value in at least one of the five CSF-serum assays, and/or a positive test result in at least one of the two CSF-only assays, and/or a positive *Borrelia* species PCR result on CSF, and/or a positive CSF-CXCL13 result are listed in the corresponding row and if this included patients for whom LNB was ruled out, the alternative diagnosis was shown. For all other (non-LNB) patients, diagnoses that were found at least twice included peripheral neuropathy ($n = 18$), demyelinating conditions ($n = 15$) including six cases of multiple sclerosis (MS), radiculopathy ($n = 8$), non-CSF infectious disease ($n = 7$), spinal stenosis ($n = 6$), proven non-LNB CSF infectious disease ($n = 3$; streptococcus ($n = 1$) and viral ($n = 2$) meningitis); nonspecific tendon-myo-genic pain ($n = 3$), cerebrovascular accident ($n = 3$), headache/migraine ($n = 3$), cancer ($n = 3$), epilepsy ($n = 2$), sleep disorder ($n = 2$), psychogenic disorder ($n = 2$), microvascular white matter lesions ($n = 2$), and arthralgia ($n = 2$). A unique diagnosis was found for 18 non-LNB patients and 21 non-LNB patients never received a diagnosis (data not shown).
- i. Symptom duration is the number of days between the start of symptoms and the lumbar puncture and is only shown for definite and possible LNB patients.
- j. Of the 17 patients that were classified as definite or possible LNB patient, 15 (10 definite and 5 possible LNB patients) had been treated for LNB following the recommendations of the Dutch guidelines for LB [4]. This treatment had started after the LP was performed with a median of 0 days [range 0-18] after CSF-blood sampling. Nine of the 10 definite LNB patients were treated with ceftriaxone (2 g/day) intravenously for either 14 ($n = 6$; [ctrx 14]) or 28 ($n = 3$; [ctrx 28]) days. One definite LNB patient had started with intravenous ceftriaxone (2 g/day), but after 5 days switched to oral doxycycline (100 mg twice a day) for 25 days because of an allergic reaction (ctrx/doxy). Four of the five possible LNB patients received ceftriaxone (2 g/day) intravenously for either 14 ($n = 3$; [ctrx 14]) or 28 ($n = 1$; [ctrx 28]) days. The remaining possible-LNB patient received oral doxycycline (100 mg twice a day) from the start for 30 days (doxy 30).
- k. For one possible LNB patient, the IgM antibody index value using the *recomBead* assay is missing due to insufficient sample material (for this patient, the IgG antibody index value using the *recomBead* assay is normal).
- l. For two cases, one possible LNB and one non-LNB patient, the IgG antibody index value using the *recomBead* assay is missing due to insufficient sample material (for these patients, the IgM antibody index value using the *recomBead* assay is normal).
- m. For two cases, one definite LNB and one non-LNB patient, the IgM and IgG antibody index values using the Serion ELISA were not determined due to insufficient sample material.
- n. For seven cases, five definite and two possible LNB patients, the IgM and IgG antibody index values using the Enzygnost ELISA were not determined as the ELISA was taken of the market.
- o. The positive overall Ig *recomLine* immunoblot result was based on a negative result for IgM and a positive result for IgG. For IgG, this result was based on the revised interpretation criteria of the *recomLine* IgG immunoblot (Table S3); however, using the old interpretation criteria, the IgG result on CSF for seven cases (one definite LNB, one possible LNB and five non-LNB patients) and the IgG result on serum for two non-LNB patients, was negative. Consequently, the overall Ig result based on the old interpretation criteria of the *recomLine* IgG immunoblot would also have been negative for these cases.
- p. The *recomLine* immunoblot was tested on all 156 sera and the results were compared with those obtained in CSF to assess the origin of the *Borrelia*-specific antibodies (CSF or blood-derived). For four non-LNB patients, all of whom had a negative C6 EUSA result on serum and were, thus, considered seronegative using the two-tier testing algorithm, the *recomLine* IgM immunoblot on serum was positive. For three of them, IgM *recomLine* immunoblot positivity was based on a positive band for either one ($n = 2$) or three ($n = 1$) OspC antigens. For one non-LNB patient, IgM *recomLine* immunoblot positivity was based on a positive band for p41 and p18 *B. garinii*.

Table S3. Test characteristics of the five antibody assays tested on CSF-serum pairs (A) and the two antibody assays tested on CSF only (B) used for the detection of intrathecally produced *Borrelia*-specific antibodies

Assays	Technique	Target	Quantification	Intrathecal antibody synthesis	Normal AI value	Borderline AI value	Pathological AI value
A.	IDEIA™ Lyme Neuroborreliosis	IgM and IgG: purified native DK1 flagellum (p41) <i>B. afzelii</i>	Semi-quantitative; OD	AI by using the formula: (OD CSF / OD SER) * (OD CSF - OD SER)	AI < 0.3 or OD CSF < 0.150	NA	AI ≥ 0.3
	<i>Borrelia</i> -IgM-ELISA Medac	IgM: OspC and ViSE	Quantitative (concentration using single-point quantification with lot-specific calibration curve)	AI by Reiber and Peter [8]	0.6 ≤ AI ≤ 1.3	1.3 < AI ≤ 1.5'	AI > 1.5
	<i>Borrelia</i> -IgG-ELISA Medac	IgG: ViSE					
	recomBead Borrelia IgM 2.0	IgM and IgG against highly purified recombinant antigens from <i>Bbss</i> , <i>Bafz</i> , <i>Bgar</i> , <i>Bbav</i> and <i>Bsp</i> . Different fluorescent-labelled beads are coated with either one of the following antigens: p100, ViSE, p58, p39, OspA, OspC (<i>Bbss</i> , <i>Bafz</i> , <i>Bgar</i>), and p18 (<i>Bbss</i> , <i>Bafz</i> , <i>Bbav</i> , <i>Bgar</i> , <i>Bsp</i>) ^{a,b}	Semi-quantitative; MFI	For each antigen separately, an AI is calculated by Reiber and Peter [8]. A single pathological AI value is sufficient to suggest the intrathecal synthesis of <i>Borrelia</i> -specific antibodies	0.6 ≤ AI ≤ 1.3	1.3 < AI < 1.5'	AI ≥ 1.5
	recomBead Borrelia IgG 2.0						
	<i>Borrelia burgdorferi</i> IgM SERION ELISA classic	IgM: whole-cell lysates <i>B. afzelii</i> Pko [5] and <i>B. garinii</i> [6]	Quantitative (concentration using single-point calibration with 4-PL method and lot-specific calibration curve)	AI by Reiber and Peter [8]	0.7 ≤ AI ≤ 1.4	NA	AI > 1.5
	<i>Borrelia burgdorferi</i> IgG SERION ELISA classic	IgG: whole-cell lysates <i>B. afzelii</i> Pko [5] and <i>B. garinii</i> [6] + recombinant ViSE					
	Enzygnost® Borreliosis/IgM	IgM: whole-cell lysate <i>B. burgdorferi</i> Pko	Quantitative (OD index for IgM and concentration using the alpha-method for IgG)	AI by Reiber and Peter [8]	0.5 ≤ AI ≤ 1.49	NA	AI ≥ 1.5
	Enzygnost® Lyme link ViSE/IgG	IgG: whole-cell lysate <i>B. afzelii</i> Pko + recombinant ViSE					
	C6 ELISA	Total Ig (IgM and IgG) against synthetic C6 peptide, derived from a highly immunogenic part (invariable region 6) of the ViSE lipoprotein [7]	Semi-quantitative by Lyme Index ^c	NA	NA	NA	NA
B.	recomLine IgM and IgG [9,10] ^d	IgM and IgG against various antigens from <i>Bbss</i> , <i>Bafz</i> , <i>Bgar</i> , <i>Bbav</i> , and <i>Bsp</i> . Antigens coated are p100, ViSE, p58, p41, p39, OspA, OspC (<i>Bbss</i> , <i>Bafz</i> , <i>Bgar</i> , <i>Bsp</i>) ^e , and p18 (<i>Bbss</i> , <i>Bafz</i> , <i>Bbav</i> , <i>Bgar</i> 2, <i>Bsp</i>) ^{a,b}	Qualitative by intensity and number of bands ^{e,f}	NA	NA	NA	NA

AI, antibody index; Ig, immunoglobulin; OD, optical density; CSF, cerebrospinal fluid; SER, serum; NA, not applicable; Osp, outer surface protein; ViSE, variable major protein-like sequence, expressed; *Bbss*, *B. burgdorferi* sensu strictu; *Bafz*, *B. afzelii*; *Bgar*, *B. garinii*; *Bbav*, *B. baviariensis*; *Bsp*, *B. spielmanii*; MFI, median fluorescence intensity; 4-PL, 4-parameter logistic

a. Reactivity against multiple OspC antigens is counted only once, irrespective of how many OspC antigens react. This also applies for reactivity against multiple p18 antigens.

b. p18 = DbpA, decorin binding protein.

c. For both CSF and serum: C6 ELISA results were interpreted by the calculation of a Lyme index (LI) for which the following formula was used: LI = OD sample / (OD calibrator + 0.3) as described in the instruction manual of the manufacturer for serum. Subsequently, results were classified as either negative (LI ≤ 0.90), equivocal (0.91 < LI < 1.09), or positive (LI ≥ 1.10).

d. The manufacturer of the recomLine immunoblot revised the interpretation of the recomLine IgG immunoblot in January 2019 by increasing the point value of the ViSE band from 5 to 6, which has an effect on the test result. In the current study, both the old and the revised interpretation criteria were used; however, only the revised interpretation criteria were elaborated on in the manuscript.

e. For both CSF and serum: point values for IgM-bands: p100 = 5, ViSE = 5, p58 = 4, p41 (flagellin) = 1, p39 = 4, OspA = 5, OspC = 8, p18 (DbpA) = 5. Point values for IgG-bands: p100 = 5, ViSE = 5, p58 = 4, p41 (flagellin) = 1, p39 = 5, OspA = 5, p18 (DbpA) = 5. Results are based on the sum of the point values of the bands that have an equal or larger intensity than the cutoff band and are interpreted as negative (≤5 points), equivocal (6 points), or positive (≥7 points).

f. AI values that were equivocal should have been repeated; however, this was not done due to limited sample material.

REFERENCES OF SUPPLEMENTAL MATERIAL

1. Mygland A, Ljostad U, Fingerle V, Rupprecht T, Schmutzhard E, Steiner I. 2010. EFNS guidelines on the diagnosis and management of European Lyme neuroborreliosis. *Eur J Neurol* 17:8-4. doi: 10.1111/j.1468-1331.2009.02862.x..
2. Reiber H. 1995. External quality assessment in clinical neurochemistry: survey of analysis for cerebrospinal fluid (CSF) proteins based on CSF/serum quotients. *Clin Chem* 41:256–263. doi: 10.1093/clinchem/41.2.256.
3. van Gorkom T, van Arkel GHJ, Heron M, Voet W, Thijsen SFT, Kremer K. 2021. The usefulness of two CXCL13 assays on cerebrospinal fluid for the diagnosis of Lyme neuroborreliosis: a retrospective study in a routine clinical setting. *J Clin Microbiol* 59:e0025521. doi: 10.1128/JCM.00255-21.
4. Kwaliteitsinstituut voor de Gezondheidszorg (CBO). 2013. Dutch guidelines Lyme disease 2013. Available at [In Dutch]: <https://www.rivm.nl/nieuws/cbo-richtlijn-lymeziekte-definitief>.
5. Canica MM, Nato F, du ML, Mazie JC, Baranton G, Postic D. 1993. Monoclonal antibodies for identification of *Borrelia afzelii* sp. nov. associated with late cutaneous manifestations of Lyme borreliosis. *Scand J Infect Dis* 25:441-448. <https://doi.org/10.3109/00365549309008525>.
6. Baranton G, Postic D, Saint G, I, Boerlin P, Piffaretti JC, Assous M, Grimont PA. 1992. Delineation of *Borrelia burgdorferi* sensu stricto, *Borrelia garinii* sp. nov., and group VS461 associated with Lyme borreliosis. *Int J Syst Bacteriol* 42:378-383. doi: 10.1099/00207713-42-3-378.
7. Liang FT, Steere AC, Marques AR, Johnson BJ, Miller JN, Philipp MT. 1999. Sensitive and specific serodiagnosis of Lyme disease by enzyme-linked immunosorbent assay with a peptide based on an immunodominant conserved region of *Borrelia burgdorferi* VlsE. *J Clin Microbiol* 37:3990–3996. doi: 10.1128/JCM.37.12.3990-3996.1999.
8. Reiber H, Peter JB. 2001. Cerebrospinal fluid analysis: disease-related data patterns and evaluation programs. *J Neurol Sci* 184:101–122. doi: 10.1016/s0022-510x(00)00501-3.
9. Mikrogen Diagnostik GmbH, Neuried, Germany. Instruction manual *recomLine* IgM and IgG. July 2013.
10. Mikrogen Diagnostik GmbH, Neuried, Germany. Instruction manual *recomLine* IgM and IgG. January 2019.