



Universiteit
Leiden
The Netherlands

Bleeding symptoms in patients diagnosed as type 3 von Willebrand disease: results from 3WINTERS-IPS, an international and collaborative cross-sectional study

Tosetto, A.; Badiee, Z.; Baghaipour, M.R.; Baronciani, L.; Battle, J.; Berntorp, E.; ... ; Federici, A.B.

Citation

Tosetto, A., Badiee, Z., Baghaipour, M. R., Baronciani, L., Battle, J., Berntorp, E., ... Federici, A. B. (2020). Bleeding symptoms in patients diagnosed as type 3 von Willebrand disease: results from 3WINTERS-IPS, an international and collaborative cross-sectional study. *Journal Of Thrombosis And Haemostasis*, 18(9), 2145-2154. doi:10.1111/jth.14886

Version: Publisher's Version
License: [Creative Commons CC BY 4.0 license](#)
Downloaded from: <https://hdl.handle.net/1887/3184909>

Note: To cite this publication please use the final published version (if applicable).

ORIGINAL ARTICLE

Bleeding symptoms in patients diagnosed as type 3 von Willebrand disease: Results from 3WINTERS-IPS, an international and collaborative cross-sectional study

Alberto Tosetto¹  | Zahra Badiie² | Mohammad-Reza Baghaipour³ | Luciano Baronciani⁴ | Javier Battle⁵ | Erik Berntorp⁶ | Imre Bodó⁷  | Ulrich Budde⁸ | Giancarlo Castaman⁹  | Jeroen C. J. Eikenboom¹⁰ | Peyman Eshghi¹¹ | Cosimo Ettorre¹² | Anne Goodeve¹³ | Jenny Goudemand¹⁴ | Charles Richard Morris Hay¹⁵ | Hamid Hoorfar¹⁶ | Mehran Karimi¹⁷ | Bijan Keikhaei¹⁸ | Riitta Lassila¹⁹ | Frank W. G. Leebeek²⁰ | Maria Fernanda Lopez Fernandez⁵ | Pier Mannuccio Mannucci⁴ | Maria Gabriella Mazzucconi²¹ | Massimo Morfini⁹ | Johannes Oldenburg²² | Ian Peake¹³ | Rafael Parra Lòpez²³ | Flora Peyvandi^{4,24}  | Reinhard Schneppenheim²⁵ | Andreas Tiede²⁶  | Gholamreza Toogeh²⁷ | Marc Trossaert²⁸ | Omidreza Zekavat²⁹ | Eva M. K. Zetterberg⁶ | Augusto B. Federici³⁰

¹Hemophilia and Thrombosis Center, Hematology Department, San Bortolo Hospital, Vicenza, Italy

²Hemophilia-Thalassemia Center, Mashhad University of Medical Science, Mashad, Islamic Republic of Iran

³Iranian Hemophilia Comprehensive Treatment Centre, Tehran, Islamic Republic of Iran

⁴Angelo Bianchi Bonomi Hemophilia and Thrombosis Center, Fondazione IRCCS Ca' Granda Ospedale Maggiore Policlinico and Fondazione Luigi Villa, Milan, Italy

⁵Complejo Hospitalario Universitario de A Coruña—Servicio de Hematología y Hemoterapia, A Coruña, Spain

⁶Skane University Hospital, Malmo, Sweden

⁷Department of Internal Medicine and Hematology, Semmelweis University, Budapest, Hungary

⁸MEDILYS Labor Gesellschaft, Hamburg, Germany

⁹Center for Bleeding Disorders and Coagulation, Careggi University Hospital, Florence, Italy

¹⁰Division of Thrombosis and Hemostasis, Department of Internal Medicine, Leiden University Medical Center, Leiden, the Netherlands

¹¹Pediatric Congenital Hematologic Disorders Research Center, Shahid Beheshti University of Medical Sciences, Tehran, Islamic Republic of Iran

¹²Hemostasis and Thrombosis Center, Azienda Ospedaliera Policlinico Consorziale, Bari, Italy

¹³University of Sheffield, Sheffield, UK

¹⁴Department of Haematology Transfusion, University Lille—CRMW, CHRU Lille, Lille, France

¹⁵Manchester Royal Infirmary, Manchester, UK

¹⁶Hemophilia Center—Esfahan University of Medical Science, Esfahan, Islamic Republic of Iran

¹⁷Hematology Research Center, Nemazee Hospital, Shiraz University of Medical Science, Shiraz, Islamic Republic of Iran

¹⁸Thalassemia and Hemoglobinopathy Research Center, Health Research Institute, Ahvaz Jundishapur University of Medical Sciences, Ahvaz, Iran

¹⁹Coagulation Disorders, Helsinki University Central Hospital, Helsinki, Finland

²⁰Erasmus Medical Center, Rotterdam, the Netherlands

²¹Hemophilia and Thrombosis Center—University of Rome, Rome, Italy

²²Institute of Experimental Haematology and Transfusion Medicine, University of Bonn, Bonn, Germany

Manuscript handled by: Jill Johnsen

Final decision: Jill Johnsen, 28 April 2020

© 2020 International Society on Thrombosis and Haemostasis

²³Unidad de Hemofilia—Hospital Universitari General Vall d'Hebron, Barcelona, Spain

²⁴Department of Pathophysiology and Transplantation, Università degli Studi di Milano, Milan, Italy

²⁵Department of Pediatric Hematology and Oncology, University Medical Centre, Hamburg, Germany

²⁶Department of Hematology, Hemostasis, Oncology and Stem Cell Transplantation, Hannover Medical School, Hannover, Germany

²⁷Thrombosis Hemostasis Research Center—Vali-Asr Hospital—Emam Khameini Complex Hospital, Tehran University of Medical Science, Tehran, Islamic Republic of Iran

²⁸Centre Régional de Traitement de l'Hémophilie—Laboratoire d'Hématologie, Nantes, France

²⁹Hematology Research Center, Shiraz University of Medical Sciences, Shiraz, Islamic Republic of Iran

³⁰Hematology and Transfusion Medicine, Department of Oncology and Oncohematology, L. Sacco University Hospital, University of Milan, Milano, Italy

Correspondence

Alberto Tosetto, Hemophilia and Thrombosis Center, Hematology Department, San Bortolo Hospital, Vicenza, Italy.

Email: alberto.tosetto@aulls8.veneto.it

Abstract

Background: Type 3 von Willebrand's disease (VWD) patients present markedly reduced levels of von Willebrand factor and factor VIII. Because of its rarity, the bleeding phenotype of type 3 VWD is poorly described, as compared to type 1 VWD.

Aims: To evaluate the frequency and the severity of bleeding symptoms across age and sex groups in type 3 patients and to compare these with those observed in type 1 VWD patients to investigate any possible clustering of bleeding symptoms within type 3 patients.

Methods: We compared the bleeding phenotype and computed the bleeding score (BS) using the MCMDM-1VWD bleeding questionnaire in patients enrolled in the 3WINTERS-IPS and MCMDM-1VWD studies.

Results: In 223 unrelated type 3 VWD patients, both the BS and the number of clinically relevant bleeding symptoms were increased in type 3 as compared to type 1 VWD patients (15 versus 6 and 5 versus 3). Intracranial bleeding, oral cavity, hemarthroses, and deep hematomas were at least five-fold over-represented in type 3 VWD. A more severe bleeding phenotype was evident in patients having von Willebrand factor antigen levels < 20 IU/dL at diagnosis in the two merged cohorts. In type 3 patients, there was an apparent clustering of hemarthrosis with gastrointestinal bleeding and epistaxis, whereas bleeding after surgery or tooth extraction clusters with oral bleeding and menorrhagia.

Conclusions: In the largest cohort of type 3 VWD patients, we were able to describe a distinct clinical phenotype that is associated with the presence of a more severe hemostatic defect.

KEYWORDS

type 1 epidemiology hemorrhage blood coagulation disorders, type 3 von Willebrand disease, von Willebrand disease

1 | INTRODUCTION

Von Willebrand disease (VWD) is an inherited disorder caused by a deficiency of the activity of von Willebrand factor (VWF), a multi-function plasma protein primarily binding to platelet Gplb and sub-endothelial collagen.^{1,2} The most prevalent form of VWD is type 1 VWD, having an autosomal dominant inheritance associated with a mild-to-moderate quantitative reduction of VWF. In contrast, autosomal recessive VWD, known as type 3 VWD (OMIN #277480), is characterized by a markedly severe deficiency of VWF, with nearly

undetectable plasma levels of VWF antigen (VWF:Ag) and severely reduced factor VIII (FVIII).³⁻⁷ Patients having type 3 VWD do not respond to treatment with desmopressin, and substitution treatment with plasma or recombinant VWF concentrates is usually required.⁸⁻¹⁰ Type 3 VWD is caused by homozygous or compound heterozygous mutations in the gene encoding VWF, with some genotypes associating with an increased risk of alloantibody development after substitution treatment.^{11,12}

Several multicenter, collaborative studies have described the bleeding phenotype of type 1 VWD, confirming the highly

heterogeneous variability of bleeding severity.¹³⁻¹⁶ The clinical phenotype in type 3 patients is less well characterized because of the rarity of these patients, with an estimated prevalence of around 1 case per million, which may increase in countries with consanguineous offspring.¹⁷ The clinical manifestations most frequently reported are disproportionate mucocutaneous bleeding; severe menorrhagia; and hemophilia-like symptoms, such as muscle hematomas and joint bleeding.¹⁷⁻¹⁹ A more detailed description of the clinical phenotype of type 3 VWD patients would have relevant clinical implications, however, particularly taking into account the impact of bleeding symptoms in the patient's quality of life and the associated socioeconomic burden.^{20,21}

The type 3 Von Willebrand International Registries Inhibitor Prospective Study (3WINTERS-IPS, registered at www.clinicaltrials.gov as NCT02460458) is a non-profit; investigator-initiated; multicenter; European-Iranian observational, retrospective, and prospective study on patients with a diagnosis of type 3 VWD. The study was designed to assess the clinical phenotype of type 3 VWD, describe its laboratory pattern and genetic background, and assess the safety and efficacy of therapeutic products for the prevention and treatment of bleeding symptoms.

In this study, we aimed at evaluating the clinical presentation of type 3 VWD patients enrolled by the 3WINTERS-IPS. We specifically aimed at describing the frequency of the different bleeding symptoms and comparing them with those reported by type 1 VWD patients. We hypothesized that type 3 patients might have a different clinical presentation from type 1 VWD patients not only quantitatively, but also qualitatively. We also wished to evaluate patterns of association between specific bleeding symptoms in type 3 patients.

2 | METHODS

2.1 | Patient cohorts

The 3WINTERS-IPS enrolled patients from 22 centers from nine countries. We evaluated data originating from the first part of the study, having a cross-sectional design. Patients were eligible when having a documented bleeding history, VWF:Ag below 3 IU/dL, and an autosomal recessive inheritance based on phenotype analysis at the recruiting centers.^{22,23} Clinical and laboratory data were obtained in an anonymized form from the Molecular and Clinical Markers for the Diagnosis and Management of type 1 von Willebrand Disease (MCMDM-1VWD) study database, after having obtained consent from the MCMDM-1VWD study coordinator (IP).

2.2 | Collection of the bleeding history

After signing an informed consent to participate in the study, all subjects were administered a bleeding questionnaire exploring the history of bleeding symptoms by a trained physician who queried patients in the local language. For this retrospective phase, the

Essentials

- Type 3 von Willebrand disease (VWD) is a rare bleeding disorders, with poorly characterized bleeding phenotype.
- We conducted a multicenter, multinational observational study in patients previously diagnosed as type 3 VWD.
- A severe bleeding phenotype with intracranial bleeding, oral cavity, hemarthroses, and deep hematomas is five-fold more frequent in type 3 than in type 1 VWD and with clustering of bleeding symptoms within individual patients.
- These findings represent the first systematic description of the clinical presentation of type 3 VWD.

MCMDM-1VWD questionnaire was used to evaluate bleeding history, allowing an appropriate comparison between the two groups of patients.¹³ Spontaneous bleeding symptoms (epistaxis, oral cavity bleeding, cutaneous bleeding, bleeding after minor wounds, hematomas, intracerebral bleeding, hemarthroses, menorrhagia) were collected from birth to the date of enrollment in the study. Bleedings after surgery, delivery, or tooth extraction were recorded only from the date of birth to the age of diagnosis because the appearance of these symptoms may have been influenced by medical treatment after diagnosis.¹³ We calculated the bleeding score (BS) according to the MCMDM-1VWD criteria and considering symptoms that occurred before the diagnosis of VWD.

2.3 | Laboratory measurements

In all investigated patients, we collected 20 mL of citrated blood samples with clean venipuncture at the time of recruitment. Platelet-poor plasma was immediately aliquoted and stored at -80°C for subsequent measurements. In the 3WINTERS-IPS, VWF:Ag was centrally measured in Hamburg (Dr U. Budde) using a sensitive VWF:Ag enzyme-linked assay, whereas in the MCMDM-1VWD study VWF:Ag was measured in Vicenza using a commercial assay (VWF Assay, Stago, France). Both measurements had an interassay coefficient of variation below 6% and were carried out against the World Health Organization Standard for VWF/FVIII and expressed as IU/dL. For safety reasons, a wash-out period was not mandatory in eligible patients; we did, however, exclude from phenotype analyses those patients having a VWF:Ag level ≥ 3 IU/dL at the time of sampling.

2.4 | Statistical methods

We used median and interquartile ranges to describe quantitative values, and median and chi-square statistic to test for statistical differences of quantitative and qualitative variables, respectively.

We used the ratio between the frequency of each bleeding symptoms in type 3 and type 1 VWD as a measure of association between a specific symptom and type 3 VWD 95% confidence interval (CI) were computed as for risk ratios.²⁴ When a symptom was not present (eg, a central nervous system [CNS] bleeding in type 1 VWD), we imputed 0.5 instead of zero in that cell. If the lower 95% CI was higher than one, we assumed that the bleeding symptom was more frequently present in type 3 than in type 1 VWD. We compared only index cases, and affected family members enrolled in the MCMDM-1VWD study to type 3 patients. In both cohorts, individual bleeding symptoms (eg, epistaxis or menorrhagia) were considered as significant when having a score > 1 (hence requiring medical attention). For instance, epistaxis was regarded as clinically relevant when severe enough for the patient to seek medical advice. For each subject enrolled in either the MCMDM-1VWD study or the 3WINTERS-IPS, we used two measures as a proxy for the clinical severity of the bleeding phenotype: the MCMDM-1VWD BS, and the total number of relevant bleeding symptoms presented by the patient. While the BS is a well-known index of bleeding severity, it is nonetheless influenced by the most severe symptom ever suffered by a patient. On the other hand, counting the number of different bleeding symptoms sustained by an individual patient may also be a relevant indicator of the overall bleeding tendency of that patient. In a previous study, we demonstrated that the number of bleeding symptoms has a diagnostic capability similar to that of the BS for the diagnosis of mild VWD.²⁵ We used two different regression models to study the relation between VWF:Ag and the bleeding phenotype in the two merged cohorts. Linear regression was used to model VWF:Ag dependent variations of the BS, while Poisson regression was used to study the changes in the number of clinically relevant symptoms. In both models, we included ABO blood type, age, and sex as covariates and, because the relation between VWF:Ag and

bleeding risk is known to be nonlinear, we used four-knots cubic splines for VWF:Ag values.^{26,27} The relation between VWF:Ag and the bleeding risk was then evaluated by plotting the partial residuals against VWF:Ag in the two models (ie, linear or Poisson regression); the frequency of bleeding at VWF:Ag equal to 100 IU/dL was considered as the baseline risk. We finally used the chi-square statistics and associated standardized residuals to evaluate if the observed distribution of each possible symptom pair (eg, epistaxis and surgery, epistaxis and menorrhagia, epistaxis and cutaneous bleeding) deviated from the expected one in the 3WINTERS-IPS cohort. We then used a circo plot to graphically depict the relation between bleeding symptoms in type 3 patients. In a circo plot, different symptoms are joined together by an arc whose bases are directly proportional to the number of individuals presenting the two signs together.²⁸ Hence, in a circo plot, the width of the strips is directly proportional to the number of patients having both symptoms (symptom pairs). To reduce visual cluttering and to minimize the chances of model overfitting, we plotted only those relational pairs having a standardized residual corresponding to a $P < .001$ in a chi-square statistic, therefore indicating a statistical association even after Bonferroni adjustment for 10 pair comparisons. The R statistical package was used for data analysis,²⁹ using the *circlize* package for circo plots.³⁰

3 | RESULTS

3.1 | Patient cohorts

The 3WINTERS-IPS enrolled a total of 265 unrelated patients, of whom we analyzed in the present study 223 patients with an available bleeding history at recruitment (Figure 1). The median age at study inclusion was 29 years, whereas the median age at diagnosis

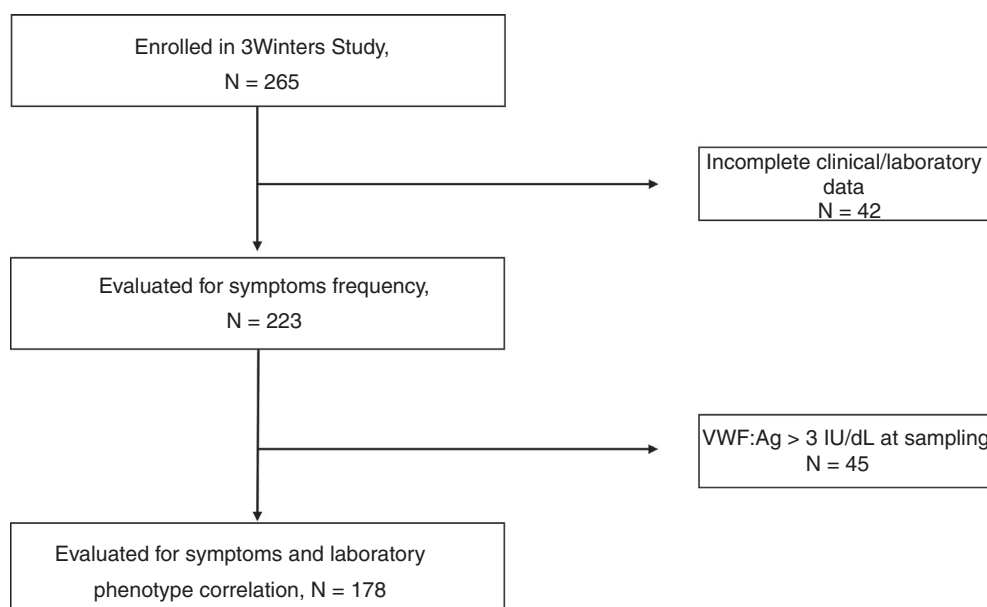


FIGURE 1 CONSORT flow-chart of patients enrolled in the type 3 Von Willebrand International Registries Inhibitor Prospective Study

was 2 years (interquartile range, 1-6); 129 were females. There were 106 patients of Iranian descent, while the remaining patients were from Europe. Table 1 reports the clinical characteristics of patients enrolled in the 3WINTERS-IPS and the MCMDM-1VWD studies, respectively. The 3WINTERS-IPS and the MCMDM-1VWD cohorts were similar as for sex distribution but differed significantly in terms of age of diagnosis and severity of clinical presentation. Both the median BS and the median number of clinically relevant bleeding symptoms were increased in type 3 patients. There were 18 (8.1%) type 3 patients that had a normal BS at diagnosis, as compared with 138 (33.1%) type 1 patients. The ABO composition was also noticeably different, with an excess of blood O group patients in the type 1 MCMDM-1VWD cohort. Because the ABO blood group was similarly distributed in Iranian and non-Iranian patients in the 3WINTERS-IPS cohort ($P = .48$, chi-square test), this difference most likely reflects an influence of the ABO blood group in the diagnostic process of type 1 VWD.

3.2 | Bleeding symptoms in type 3 patients

Figure 2A shows that epistaxis was the most frequent clinically relevant bleeding symptom in type 3 patients, followed by menorrhagia in females. Males had a higher frequency of hemarthroses and hematomas than females (53.4% versus 42.1% and 40.8% versus 27.1%, respectively). Figure 2B shows the ratio between the frequency

of bleeding symptoms in type 3 and type 1 patients, respectively. Surgical, post-extraction, and post-partum bleeding, and menorrhagia were not specifically over-represented in type 3 VWD. In contrast, some bleeding symptoms (deep hematomas, hemarthroses, oral cavity, and CNS bleeding) were overrepresented (>five-fold) in type 3 VWD patients. When comparing the clinical presentation of type 3 versus type 1 VWD, clearly increased bleeding scores were evident for all age classes and even in pediatric cases (Figure 3).

3.3 | Relation between VWF:Ag at diagnosis and bleeding phenotype

We restricted this analysis in all patients enrolled in the MCMDM-1VWD and in the 3WINTERS-IPS patients having VWF:Ag < 3 IU/dL at the time of sampling ($n = 178$). Thus, we excluded from this analysis 45 3WINTERS-IPS patients, mainly because they did receive some form of replacement therapy in the days before sampling (Figure 1). As shown in Figure 4, VWF:Ag levels at diagnosis below 30 IU/dL were associated with a steep increase of bleeding severity both in terms of increased BS (Figure 4A) and the number of bleeding symptoms (Figure 4B). To further investigate the relation between bleeding phenotype and VWF:Ag levels, we evaluated differences in patients with type 1 or 3 VWD at three different VWF:Ag cut-offs (<10, 10-30, and >30 IU/dL; Table 2). Patients with VWF:Ag below 30 IU/dL were younger, had a similar distribution of males

TABLE 1 Clinical and laboratory characteristics of investigated subjects. For quantitative variables, median and interquartile values are reported; P values were calculated with the median test

| | 3WINTERS-IPS (N = 223) | MCMDM-1 VWD (N = 417) | P value |
|------------------------------------|---------------------------|--------------------------|--------------|
| Sex | | | |
| Male | 94 (42.2%) | 175 (42.0%) | .964 |
| Female | 129 (57.8%) | 242 (58.0%) | |
| Age at study inclusion, years | 29.0 (16.0, 43.0) | 35.0 (20.0, 48.0) | <.001 |
| Number of symptoms at diagnosis | 5.0 (4.0, 7.0) | 3.0 (2.0, 5.0) | <.001 |
| Bleeding Score | 15.0 (8.0, 20.0) | 6.0 (3.0, 10.0) | <.001 |
| Bleeding Score class | | | |
| ≤3 | 18 (8.1%) | 138 (33.1%) | <.001 |
| 4-7 | 33 (14.8%) | 121 (29.0%) | |
| 8-15 | 70 (31.4%) | 129 (30.9%) | |
| >15 | 102 (45.7%) | 29 (7.0%) | |
| ABO blood group ^a | | | |
| Non-O | 119 (54.6%) | 160 (38.4%) | <.001 |
| O | 99 (45.4%) | 257 (61.6%) | |
| Median VWF:Ag (IU/dL) at diagnosis | 0.0 (0.0, 2.0) | 35.0 (20.2, 52.0) | <.001 |

Abbreviations: 3WINTERS-IPS, type 3 Von Willebrand International Registries Inhibitor Prospective Study; MCMDM-1VWD, Molecular and Clinical Markers for the Diagnosis and Management of type 1 von Willebrand Disease; VWD, von Willebrand disease; VWF:Ag, von Willebrand factor antigen

^a5 patients were missing ABO group determination in the 3WINTERS-IPS cohort.

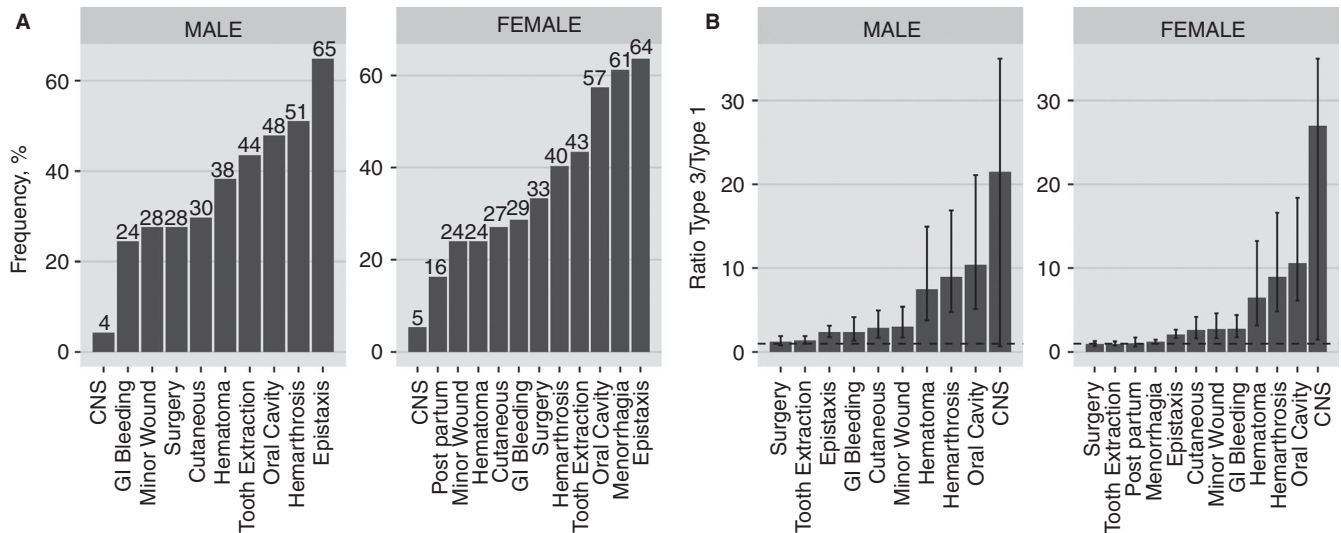


FIGURE 2 A, Frequency of clinically relevant bleeding symptoms in male and female patients with type 3 von Willebrand disease (VWD); numbers above bars represent percent frequency. B, Frequency ratios of symptoms in type 3 versus type 1 VWD. The horizontal dashed line represents the equivalence (similar frequency, rate ratio = 1) 95% confidence intervals (CI) around the ratio are depicted. When the lower 95% CI is above the equivalence line, the symptom is more frequently present in type 3 than in type 1 VWD

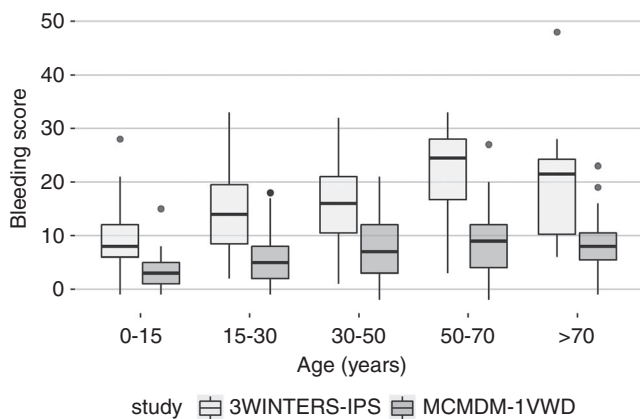


FIGURE 3 Distribution of bleeding score (BS) in the patients from the type 3 Von Willebrand International Registries Inhibitor Prospective Study (3WINTERS-IPS; light gray boxes) and Molecular and Clinical Markers for the Diagnosis and Management of type 1 von Willebrand Disease (MCMDM-1VWD) cohorts (dark gray boxes) by age, showing that BS is higher in type 3 patients in all age categories. For both type 1 and type 3 patients, the BS reaches its highest values above age 50 and subsequently remains stable

and females, of O and non-O blood group, and were more symptomatic both in terms of BS and of the number of reported bleeding symptoms.

3.4 | Bleeding patterns in type 3 VWD patients

Based on clinical experience with VWD patients, we hypothesized that some symptoms might cluster together. If this hypothesis was correct, then the observed distribution of symptoms would not be that expected by their frequency at large in all patients. For instance,

if epistaxis clusters with cutaneous bleeding, we would expect the observed frequency of cutaneous bleeding to be higher in patients with epistaxis than in those without. Figure 5A shows the association between all symptoms pairs, expressed in terms of standardized residuals of the chi-square distribution (the darker the square, the higher the degree of the association, a standardized residual higher than five being statistically significant^{31,32}). Some symptoms pairs (cutaneous bleeding with epistaxis and post-surgical with post-extraction bleeding) were strongly associated. Other significant associations were oral cavity bleeding with both post-surgical with post-extraction bleeding and epistaxis with both hemarthrosis and GI bleeding. The circo plot in Figure 5B expands these findings, showing two distinct patterns of clustering. The first comprises the association of hemarthrosis with GI bleeding and epistaxis and, to a lesser extent, with deep hematomas; the second cluster is the association of oral cavity bleeding with post-surgical or post-extraction bleeding and with menorrhagia.

4 | DISCUSSION

Type 3 VWD is an autosomal recessive or co-dominant disorder with a reported prevalence ranging from 0.1 to 5.3 per million.^{17,33} Given its rarity, there are few systematic descriptions of the clinical phenotype of type 3 VWD patients, as is the case for type 1 VWD patients. The 3WINTERS-IPS is the first extensive, multicenter investigation of type 3 patients that systematically collects clinical and laboratory phenotypic data, and therefore offers a unique opportunity for providing a full clinical picture of these rare disease patients.

This study shows that the bleeding phenotype in type 3 VWD patients is remarkably different from that of type 1 patients, not

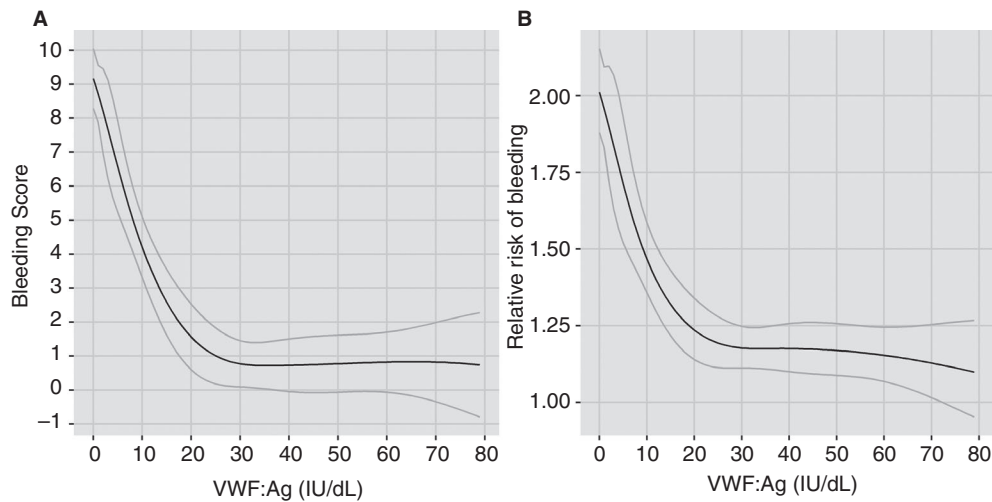


FIGURE 4 Relationship between bleeding severity and von Willebrand factor antigen (VWF:Ag) in the two merged cohorts, showing that bleeding severity increases for VWF:Ag levels below 30 IU/dL. VWF:Ag was modeled using a four-knots cubic spline, with a linear model used for Panel A and a Poisson model for Panel B. Black lines: primary model gray lines: 95% confidence interval. A, Relation between bleeding score (BS) and VWF:Ag. B, Relation between risk of having one or more clinically relevant bleeding symptoms and VWF:Ag. In both panels, the ordinate (y-axis) expresses the absolute increase of BS or relative risk related to VWF:Ag in regression model also adjusted for age, sex, and ABO blood type

TABLE 2 Characteristics of investigated subjects of the combined cohorts of MCMDM-1VWD and 3WINTERS-IPS stratified by VWF:Ag level. For quantitative variables, median and interquartile values are reported *P* values were calculated with the median test

| | VWF:Ag < 10 IU/dL (N = 221) | VWF:Ag 10-30 IU/dL (N = 131) | VWF:Ag > 30 IU/dL (N = 240) | <i>P</i> value |
|--|-----------------------------|------------------------------|-----------------------------|----------------|
| Sex | | | | |
| Male | 96 (43.4%) | 56 (42.7%) | 97 (40.4%) | .793 |
| Female | 125 (56.6%) | 75 (57.3%) | 143 (59.6%) | |
| Median age at study inclusion, years | 28.0 (16.0, 42.0) | 34.0 (17.0, 48.0) | 34.5 (20.8, 49.0) | <.001 |
| Median number of symptoms at diagnosis | 5.0 (4.0, 7.0) | 3.0 (2.0, 5.0) | 3.0 (2.0, 5.0) | <.001 |
| Median Bleeding Score | 13.0 (7.0, 18.0) | 6.0 (3.0, 10.0) | 5.0 (2.0, 10.0) | <.001 |
| ABO blood group ^a | | | | |
| Non-O | 113 (51.6%) | 58 (44.3%) | 85 (35.4%) | .002 |
| O | 106 (48.4%) | 73 (55.7%) | 155 (64.6%) | |
| Study | | | | |
| 3WINTERS-IPS | 178 (80.5%) | 0 (0.0%) | 0 (0.0%) | <.001 |
| MCMDM-1VWD | 43 (19.5%) | 131 (100.0%) | 240 (100.0%) | |

Abbreviations: 3WINTERS-IPS, type 3 Von Willebrand International Registries Inhibitor Prospective Study; MCMDM-1VWD, Molecular and Clinical Markers for the Diagnosis and Management of type 1 von Willebrand Disease; VWF:Ag, von Willebrand factor antigen

^a2 missing values in the 3WINTERS-IPS (within the VWF:Ag ≤ 10 IU/dL column).

only in terms of disease severity (BS or number of bleeding symptoms) but also in terms of clinical presentation. Type 3 VWD patients had an increased BS since the pediatric age, and their median age at diagnosis (2 years) may be considered consistent with that of the clinically most severe bleeding disorders. The median BS in our cohort was 15, a figure that is remarkably similar to that reported in the more limited WiN cohort.¹⁵ Epistaxis is the most prevalent clinical symptom, followed by hemarthrosis in males and menorrhagia in females. However, by comparing the prevalence of bleeding symptoms

in patients with type 3 and type 1 VWD, we were able to demonstrate that some bleeding manifestations were typically associated with type 3 patients (Figure 1B). Central nervous system bleeding, although rare in type 3 patients, was not reported in the previous MCMDM-1VWD study, and we conservatively estimate that the prevalence of CNS bleeding is increased more than 20-fold in type 3 than in type 1 patients.

Similarly, oral cavity bleeding, hemarthroses, and deep hematomas (especially muscle hematomas) were 7- to 10-fold more

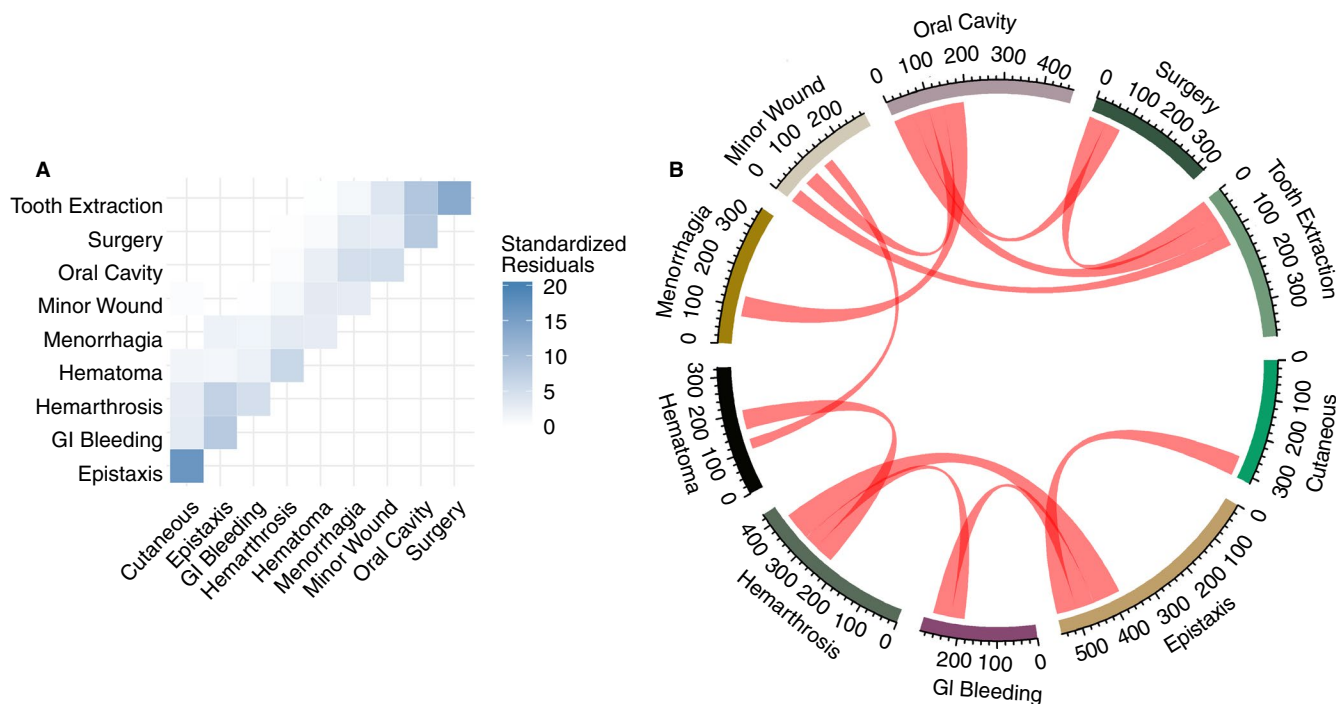


FIGURE 5 Association between all symptoms pairs in investigated patients of the type 3 Von Willebrand International Registries Inhibitor Prospective Study (3WINTERS-IPS) cohort. A, The chi-square standardized residuals: the darker the square, the higher the degree of association between two symptoms. B, Circos plot depicting the relation between bleeding symptoms in type 3 von Willebrand disease patients. Only bleeding symptoms having a score > 1 were considered; the width of the strips is directly proportional to the number of patients having both symptoms (symptom pairs). To reduce visual cluttering, we report only those relational pairs having chi-square $P < .001$. For each symptom, the numeric scale indicates the total number of observed combination pairs, and the width of the connecting string represents the number of observed combinations. For instance, in the 223 investigated patients, cutaneous bleeding was present in 315 combinations of symptoms; in 54 patients, cutaneous bleeding was present together with epistaxis

prevalent in type 3 patients. All these symptoms had a rate ratio significantly higher than one, therefore suggesting that they may be considered distinctive for type 3 rather than type 1 VWD. It is tempting to attribute this peculiar association not only to the more severely reduced VWF:Ag but also to the very low FVIII levels, with a consequent clotting defect (rather than of primary hemostasis only) more resembling hemophilia. On the other hand, the prevalence of post-surgical or post-extraction bleeding was similar to that reported for type 1 VWD, possibly suggesting that the adoption of adequate treatments is sufficient to reduce bleeding severity despite the more severe factor defect.

Another significant study finding is the association between bleeding severity and factor levels measured at diagnosis. To adequately address this issue, we pooled clinical and retrospective laboratory data from the MCMDM-1VWD type patients with those from type 3 patients, thus obtaining a spectrum of patients with a continuum of VWF:Ag ranging from 0.5 to 80 IU/dL and allowing the estimation of the relation between factor deficiency and clinical presentation. At this regard, a significant limitation of the present study is the lack of a specific metric unequivocally defining the bleeding severity, which is especially important when comparing bleeding disorders with different clinical phenotype, such as type 1 and type 3 VWD. For these latter patients, the use of a tool such as the BS may prove inaccurate, because it may substantially underestimate the

severity of a disease in an individual patient having recurrent severe bleeding symptoms (eg, two or more hemarthroses). Thus, the BS emphasizes the importance of a bleeding disorder as a determinant of the “severity” (eg, amount of blood loss) of a single symptom.

On the other hand, accounting for the total number of bleeding symptoms gives more importance to disease as a risk factor for “bleeding tendency” in all body tissues. Although neither of these two metrics is a perfect substitute for the actual patient bleeding rate, we were able to demonstrate that the severity of VWD is significantly increased when the VWF:Ag levels drop below 30 IU/dL. Interestingly, patients with a VWF:Ag below 5 IU/dL had a still sizeable increase of BS, but a lower risk of an increased number of bleeding symptoms. We hypothesize that VWD patients with a more marked reduction of VWF (such as type 3 patients) may require the adoption of more intensive treatments (eg, blood products or concentrates, surgery) to appropriately manage bleeding symptoms than patients with milder forms of VWD, with a consequent steeper increase of the association between the laboratory and clinical phenotype.

Finally, we were able to show, for the first time, some non-random bleeding patterns in type 3 VWD. The first pattern includes the presence of hemarthroses with gastrointestinal bleeding, and epistaxis in the same patient; other patients showed the association of oral cavity bleeding, post-surgical, and post-extraction bleeding.

It is worth noting that we observed an association between the presence of mucous bleeding and post-surgical or post-extraction bleeding, also in type 1 VWD patients.¹³ While the factors resulting in a particular bleeding pattern are unpredictable at the patient level, it is interesting to observe that some patients have a clinical picture resembling type 1 VWD, while others tend to present a more severe clinical presentation including hemarthroses and gastrointestinal bleeding, the latter symptom being possibly related to angiodysplasia.³⁴

Our study also has some weaknesses. First, as 41.5% of the enrolled patients were of Iranian origin, we cannot exclude that some genetic mutations may be recurrent in our study sample. Second, the MCMDM-1VWD scoring system that was used in this retrospective study may be insensitive to describe severe bleeding disorders accurately [36].

These limitations notwithstanding, the present study represents the broadest available clinical description of type 3 VWD patients, confirming its clinical severity and elucidating its peculiar clinical phenotype.

ACKNOWLEDGMENTS

We would like to thank the members and current chair of the Subcommittee on VWF of the Scientific Standardization Committee (SSC) of the ISTH who promoted the endorsement of 3WINTERS-IPS project among the scientific activities of this sub-committee. The 3WINTERS-IPS project received unconditional research grants from several pharmaceutical companies, and therefore, we acknowledge the representatives of Baxter-Shire-Takeda, Grifols, CSL Behring, LFB, Octapharma. We wish to thank Paolo De Simoni, Luca Maravigna, and Elisabetta Musazzi of the CRO Sintesi Research for the study coordination. This work was partially supported by the Hungarian National Research Development and Innovation Office (NFKI) grant OTKA-K19_131945 (I.B.).

CONFLICTS OF INTEREST

A. Tosetto, Z. Badiie, M. Baghaipour, L. Baronciani, J. Battle, E. Berntorp, I. Bodó, U. Budde, G. Castaman, J.C.J. Eikenboom, P. Eshghi, C. Ettore, A. Goodeve, J. Goudemand, C.R.M. Hay, H. Hoorfar, M. Karimi, B. Keikhaei, R. Lassila, F.W.G. Leebeek, M.F. Lopez Fernandez, P.M. Mannucci, M.G. Mazzucconi, M. Morfini, J. Oldenburg, I. Peake, R. Parra López, F. Peyvandi, R. Schneppenheim, A. Tiede, G. Toogeh, M. Trossaert, O. Zekavat, E.M.K. Zetterberg and A.B. Federici do not disclose any conflicts of interest for this publication.

AUTHOR CONTRIBUTIONS

Study design and oversight: A.B. Federici, I.R. Peake, J. Eikenboom. Data analysis: A. Tosetto. Manuscript writing and revision: A. Tosetto, A.B. Federici, I.R. Peake, J. Eikenboom, P.M. Mannucci, G. Castaman. Laboratory measurements: L. Baronciani, U. Budde, A. Goodeve. Patient data collection: A. Tosetto, Z. Badiie, M.R. Baghaipour, J. Battle, E. Berntorp, I. Bodó, G. Castaman, J. Eikenboom, P. Eshghi, C. Ettore, J. Goudemand, C. Hay, H. Hoorfar, M. Karimi, B. Keikhaei,

R. Lassila, F. Leebeek, M. Lopez Fernandez, M.G. Mazzucconi, M. Morfini, J. Oldenburg, R. Parra López, F. Peyvandi, R. Schneppenheim, A. Tiede, G. Toogeh, M. Trossaert, O. Zekavat, E. Zetterberg.

ORCID

Alberto Tosetto  <https://orcid.org/0000-0002-0119-5204>

Imre Bodó  <https://orcid.org/0000-0003-4170-8577>

Giancarlo Castaman  <https://orcid.org/0000-0003-4973-1317>

Flora Peyvandi  <https://orcid.org/0000-0001-7423-9864>

Andreas Tiede  <https://orcid.org/0000-0002-3600-8536>

REFERENCES

- Leebeek FW, Eikenboom JC. Von Willebrand's disease. *N Engl J Med*. 2016;375:2067-2080.
- Sharma R, Flood VH. Advances in the diagnosis and treatment of Von Willebrand disease. *Hematology*. ASH Education Program Book. 2017;2017:379-384.
- Favaloro EJ. Rare forms of von Willebrand disease. *Ann Transl Med*. 2018;6:345-.
- von Lillicrap D. Willebrand disease: advances in pathogenetic understanding, diagnosis, and therapy. *Blood*. 2013;122:3735-3740.
- Sadler JE, Budde U, Eikenboom JC, et al. Update on the pathophysiology and classification of von Willebrand disease: a report of the Subcommittee on von Willebrand Factor. *J Thromb Haemost*. 2006;4:2103-2114.
- Federici AB, James P. Current management of patients with severe von Willebrand disease type 3: A 2012 update. *Acta Haematol*. 2012;128:88-99.
- Schneppenheim R, Krey S, Bergmann F, et al. Genetic heterogeneity of severe von Willebrand disease type III in the German population. *Hum Genet*. 1994;94:640-652.
- Lavin M, O'Donnell JS. New treatment approaches to von Willebrand disease. *Hematology*. ASH Education Program Book. 2016;2016:683-689.
- Gill JC, Castaman G, Windyga J, et al. Hemostatic efficacy, safety, and pharmacokinetics of a recombinant von Willebrand factor in severe von Willebrand disease. *Blood*. 2015;126:2038-2046.
- Keesler DA, Flood VH. Current issues in diagnosis and treatment of von Willebrand disease. *Res Pract Thromb Haemost*. 2018;2:34-41.
- Franchini M, Mannucci PM. Alloantibodies in von Willebrand Disease. *Semin Thromb Hemost*. 2018;44:590-594.
- James P, Lillicrap D. The role of molecular genetics in diagnosing von Willebrand disease. *Semin Thromb Hemost*. 2008;34:502-508.
- Tosetto A, Rodeghiero F, Castaman G, et al. A quantitative analysis of bleeding symptoms in type 1 von Willebrand disease: results from a multicenter European study (MCMDM-1 VWD). *J Thromb Haemost*. 2006;4:766-773.
- Flood VH, Christopherson PA, Gill JC, et al. Clinical and laboratory variability in a cohort of patients diagnosed with type 1 VWD in the United States. *Blood*. 2016;127:2481-2488.
- De Wee EM, Sanders YV, Mauser-Bunschoten EP, et al. Nijziel MR, Fijnvandraat K, Leebeek FW, for the Wi Nsg. Determinants of bleeding phenotype in adult patients with moderate or severe von Willebrand disease. *Thromb Haemost*. 2012;108:683-692.
- James PD, Notley C, Hegadorn C, et al. The mutational spectrum of type 1 von Willebrand disease: Results from a Canadian cohort study. *Blood*. 2007;109:145-154.
- Eikenboom JC. Congenital von Willebrand disease type 3: clinical manifestations, pathophysiology and molecular biology. *Best Prac Res Clin Haematol*. 2001;14:365-379.
- Lak M, Peyvandi F, Mannucci PM. Clinical manifestations and complications of childbirth and replacement therapy in 385 Iranian

- patients with type 3 von Willebrand disease. *Br J Haematol*. 2000;111:1236-1239.
19. von Silwer J. Willebrand's disease in Sweden. *Acta Paediatr Scand Suppl*. 1973;238:1-159.
 20. De wee EM, Mauser-bunschoten EP, Van der bom JG, et al. Health-related quality of life among adult patients with moderate and severe von Willebrand disease. *J Thromb Haemost*. 2010;8:1492-1499.
 21. De wee EM, Fijnvandraat K, De goede-bolder A, et al. Impact of von Willebrand disease on health-related quality of life in a pediatric population. *J Thromb Haemost*. 2011;9:502-509.
 22. Ng C, Motto DG, Di Paola J. Diagnostic approach to von Willebrand disease. *Blood*. 2015;125:2029-2037.
 23. Roberts JC, Flood VH. Laboratory diagnosis of von Willebrand disease. *Int J Lab Hematol*. 2015;37(Suppl 1):11-17.
 24. Kleinbaum DG, Kupper LL, Morgenstern H. *Epidemiologic Research*. Belmont, CA: Lifetime Learning Publ; 1982.
 25. Rodeghiero F, Castaman G, Tosetto A, et al. The discriminant power of bleeding history for the diagnosis of type 1 von Willebrand disease: an international, multicenter study. *J Thromb Haemost*. 2005;3:2619-2626.
 26. Rosner B. *Fundamentals of Biostatistics*. Boston, MA: Brooks/Cole; 2011.
 27. Durrleman S, Simon R. Flexible regression models with cubic splines. *Stat Med*. 1989;8:551-561.
 28. Wong B. Visualizing biological data. *Nat Methods*. 2012;9:1131.
 29. R Development Core Team. *R: A Language and Environment for Statistical Computing (v 3.6.1)*. Vienna, Austria: R Foundation for Statistical Computing; 2019.
 30. Gu Z, Gu L, Eils R, Schlesner M, Brors B. Circlize implements and enhances circular visualization in R. *Bioinformatics*. 2014;30:2811-2812.
 31. Agresti A. *Analysis of ordinal categorical data*. Hoboken, NJ: John Wiley & Sons; 2012.
 32. Sharpe D. Your chi-square test is statistically significant: Now What? *Pract Assess Res Evaluation*. 2015;20:1-10.
 33. Bowman M, Tuttle A, Notley C, et al. The genetics of Canadian type 3 von Willebrand disease: further evidence for co-dominant inheritance of mutant alleles. *J Thromb Haemost*. 2013;11:512-520.
 34. Franchini M, Mannucci PM. Von Willebrand disease-associated angiodysplasia: a few answers, still many questions. *Br J Haematol*. 2013;161:177-182.

How to cite this article: Tosetto A, Badiee Z, Baghaipour M-R, et al. Bleeding symptoms in patients diagnosed as type 3 von Willebrand disease: Results from 3WINTERS-IPS, an international and collaborative cross-sectional study. *J Thromb Haemost*. 2020;18:2145-2154. <https://doi.org/10.1111/jth.14886>