



Universiteit
Leiden
The Netherlands

Pancreatic islet transplantation: studies on the technique and efficacy of islet isolation and transplantation

Burg, M.P.M. van der

Citation

Burg, M. P. M. van der. (1994, November 9). *Pancreatic islet transplantation: studies on the technique and efficacy of islet isolation and transplantation*. Retrieved from <https://hdl.handle.net/1887/3486604>

Version: Publisher's Version

License: [Creative Commons CC BY 4.0 license](https://creativecommons.org/licenses/by/4.0/)

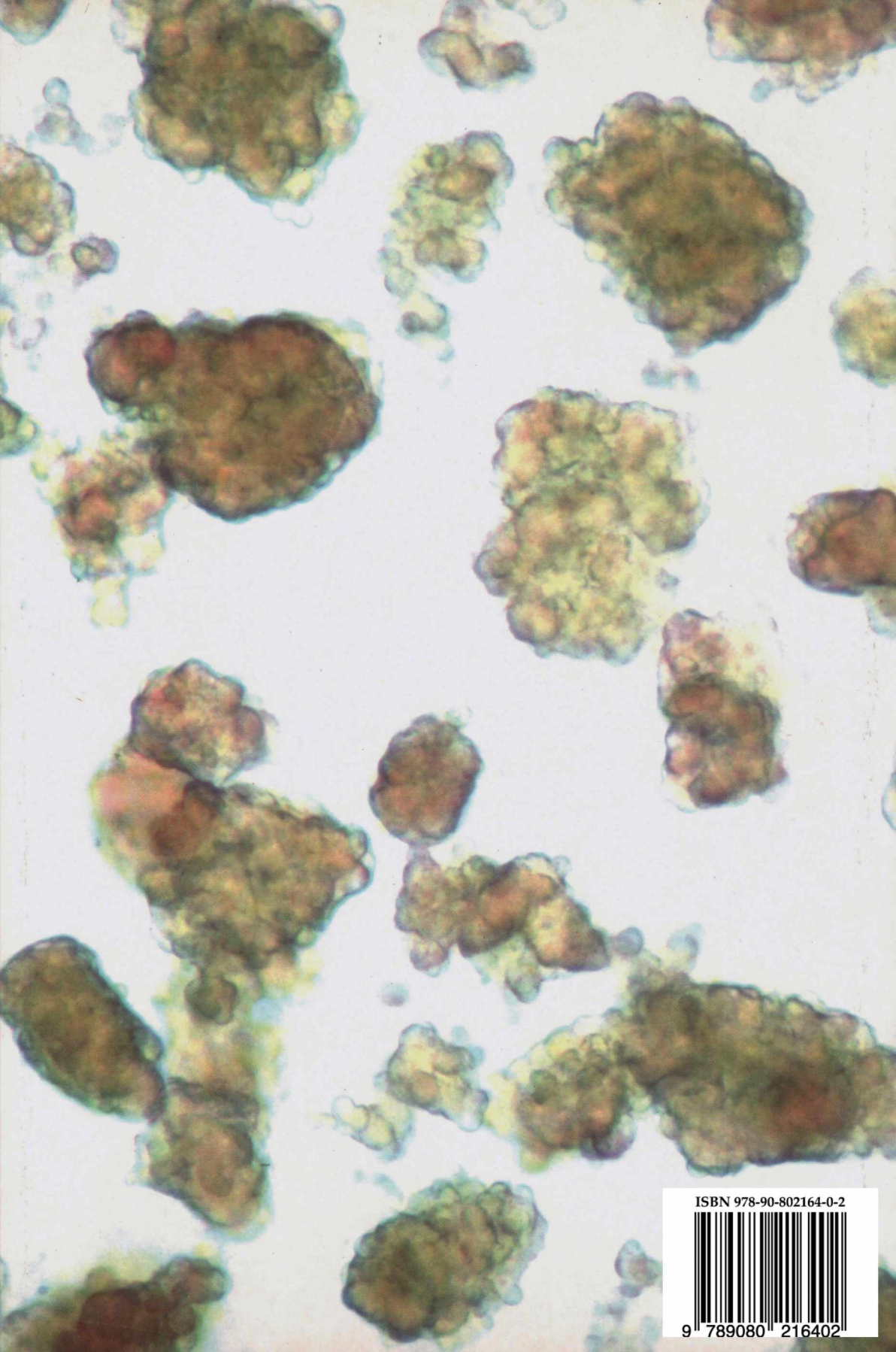
Downloaded from: <https://hdl.handle.net/1887/3486604>

Note: To cite this publication please use the final published version (if applicable).

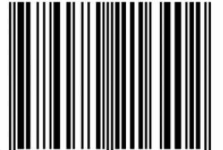
Pancreatic islet transplantation

A microscopic image showing several pancreatic islets. These are clusters of endocrine cells, primarily beta cells, which are stained to show their internal structure. The islets vary in size and shape, appearing as irregular, rounded masses of cells with a granular, brownish-green color. The background is a light, pale color, likely the surrounding exocrine tissue.

Michel P.M. van der Burg



ISBN 978-90-802164-0-2



9 789080 216402