



Universiteit
Leiden
The Netherlands

Molecular endometrial carcinoma classification: facing up to the challenges of clinical implementation

León del Castillo, A.

Citation

León del Castillo, A. (2022, November 1). *Molecular endometrial carcinoma classification: facing up to the challenges of clinical implementation*.

Retrieved from <https://hdl.handle.net/1887/3485121>

Version: Publisher's Version

License: [Licence agreement concerning inclusion of doctoral thesis in the Institutional Repository of the University of Leiden](#)

Downloaded from: <https://hdl.handle.net/1887/3485121>

Note: To cite this publication please use the final published version (if applicable).

Chapter 3

Interpretation of somatic *POLE* mutations in endometrial carcinoma

Alicia Leon-Castillo[†], Heidi Britton[†], Melissa K McConechy,
Jessica N McAlpine, Remi Nout, Stefan Kommoss, Sara Y Brucker,
Joseph W Carlson, Elisabeth Epstein, Tilman T Rau, Tjalling Bosse[‡],
David N Church[‡], C Blake Gilks[‡]

[†] These authors contributed equally to this work

[‡] These authors share senior authorship.

Journal of Pathology 2020 Mar;250(3):323-335.

Introduction

Pathogenic somatic mutations in the exonuclease domain of the replicative DNA polymerase Pol epsilon (*POLE*) define a subgroup of endometrial cancers (EC) with ultramutation (frequently ≥ 100 mutations/Mb), characteristic mutation signature (COSMIC signature 10),¹ enhanced immune response and excellent clinical outcome²⁻⁷. “*POLE* ultramutated” EC (*POLEmut* EC) has therefore been proposed as a distinct clinical entity that can be diagnosed in the presence of a pathogenic *POLE* exonuclease domain mutation (EDM).⁸ For the five most common *POLE* mutations (P286R, V411L, S297F, A456P, and S459F) pathogenicity (in this sense meaning causal for tumour ultramutation) has been confirmed,^{4-6,9-25} however, the classification of other, less frequent, *POLE* variants is currently challenging. This is becoming an urgent problem, as *POLE* sequencing for molecular EC classification is rapidly entering clinical practice.

Previous work has shown that EC with a pathogenic *POLE* EDM typically display characteristic genomic alterations, with high prevalence of C>A substitutions, frequently exceeding 20%, low proportion of small insertion and deletion mutations (indels) and extremely high tumour mutational burden (TMB, >100 mut/Mb).^{12,26} In the pivotal 2013 EC study from The Cancer Genome Atlas (TCGA), all 17 tumours classified as ultramutated had a *POLE* EDM, including recurrent P286R and V411L substitutions (8 and 5 cases respectively), and one case each of S297F, A456P, M444K, and L424I substitutions.⁷ Interestingly, 10 of 231 non-ultramutated EC in this study also had a *POLE* mutation either within or outside the exonuclease domain. Following the TCGA report, further studies have confirmed the prevalence of the five pathogenic mutations listed above, and identified additional variants of uncertain pathogenicity. The parameters by which to evaluate the latter are ill-defined, and thus classification of such cases is challenging, particularly in the absence of whole exome or whole genome sequencing (WES/WGS). In order to facilitate the classification of EC in clinical practice, we aimed to develop a scoring system to estimate pathogenicity of novel *POLE* mutations based on the presence or absence of genomic alterations associated with known pathogenic *POLE* mutations. We also sought to provide pragmatic guidelines for the interpretation of *POLE* variants in cases analysed by targeted *POLE* sequencing where such comprehensive genomic data are unavailable, being mindful that the designation of a tumour as *POLE*-ultramutated EC may lead to withholding treatment, given the very favourable prognosis of this EC molecular subtype, so that a conservative approach to diagnosis is warranted.

Material and methods

Data extraction TCGA EC Cohort

To analyse the base change proportions of the TCGA cohort of EC (n=530), we downloaded the MAF files (using Mutect for point somatic mutation call as well as small insertions and deletions (indels)), from Genome Data Commons (<https://portal.gdc.cancer.gov/>, accessed February 27th 2019). We used somatic called coding variants (single nucleotide substitutions (SNV), including synonymous mutations, and indels) as mutation count. To estimate tumour mutational burden (TMB) we used 38 Mb as the estimate of the exome size. Microsatellite status, as defined by the Bethesda Protocol classification,²⁷ was obtained from Genome Data Analysis Center (GDAC) database (<https://gdac.broadinstitute.org/>, accessed 30th October 2018).

COSMIC signatures from all 530 TCGA EC were obtained from mSignatureDB (<http://tardis.cgu.edu.tw/msignaturedb/>, accessed 22nd October 2019).^{28,29}

Recurrence of somatic *POLE* mutations in EC and pancancer

We searched for each somatic *POLE* mutation in the complete TCGA (Genome Data Commons) catalogues and COSMIC (<https://cancer.sanger.ac.uk/cosmic>, accessed 10th January 2019), annotating their recurrence on all cancer types (pancancer) and exclusively within EC (supplementary material, Table S1). Recurrent mutations were defined as those present in two or more cancer samples in COSMIC and TCGA databases combined (cases present in both databases were counted only once). A mutation was considered non-recurrent if it was found only once.

In silico prediction tools

To evaluate the functional status of somatic *POLE* mutations, we used six widely-used *in silico* tools: SIFT,³⁰ PROVEAN,³¹ PolyPhen-2,³² PANTHER,³³ SNAP2³⁴ and the meta predictor REVEL.³⁵ SIFT is a multi-step algorithm using sequence-based predictive features to predict the effect of single-nucleotide polymorphisms (SNPs).³⁰ PROVEAN extends this approach, additionally incorporating analysis of in-frame insertions, deletions, and multiple substitutions.³¹ PolyPhen-2 implements sequence-based and structure-based predictive features and compares wild-type and mutant allele through a decision tree;³² “possibly damaging” results were interpreted as benign. PANTHER is based on protein sequence, using a metric based on evolutionary conservation on direct ancestors of the organism;³³ “possibly damaging” and “probably benign” results were interpreted as benign. SNAP2 is a neural network-based classifier that uses sequence and structural-based data as inputs.³⁴ REVEL is an ensemble method based on 13 individual tools;³⁵ scores below 0.5 were considered benign.

Somatic *POLE* mutations reported in EC and not detected in TCGA cases

A review of the literature was undertaken, to the end of 2018, to identify EC in which *POLE* had been sequenced and the mutations published.^{6,7,9-15,17-22,24,25} All literature contributing

entries into the COSMIC database (POLE + endometrium) were reviewed; in addition, searches in PubMed and Web of Science were undertaken with keywords: 'POLE + Endometrial + Carcinoma' and 'POLE + Endometrial + Cancer' noting that 'POLE' is interpreted as 'POLE' in these resources.

DNA mismatch repair deficient/microsatellite unstable, *POLE* exonuclease domain mutated endometrial cancer cohort

Tumours with concomitant mismatch repair deficiency (MMRd) and somatic *POLE* EDM, and clinical follow-up were identified from a pooled cohort of 2,988 molecularly profiled EC across ten participating institutes (detailed description can be found in Leon-Castillo, et al).³⁶ Informed consent and ethical approvals were obtained according to local protocols in each participating centre. These tumours were combined with five tumours with concomitant microsatellite instability and *POLE* EDM from the 2013 TCGA EC cohort for survival analysis.⁷

Statistical analysis

Nominal variables were compared by χ^2 statistics or Fisher's exact test and ordinal variables using the Mann–Whitney test. All statistical tests were two-sided and statistical significance was accepted at $p < 0.05$. We generated Kaplan–Meier curves for Recurrence-Free Survival (RFS) and Overall Survival (OS) and differences were tested by the log-rank test. The median follow-up was estimated by the reverse Kaplan–Meier method.

Results

Genomic characteristics of endometrial cancers with somatic *POLE* mutations in the complete TCGA cohort

To elucidate which genomic alterations best define pathogenic somatic *POLE* mutations (which we use in this context to mean very likely causal for tumour ultramutation), we used data from 530 EC profiled by TCGA, including those reported in the 2013 publication.⁷ This included 82 tumours with a somatic *POLE* mutation, of which 59 (72%) were located within the exonuclease domain and 23 (28%) outside the exonuclease domain. The 59 exonuclease domain mutations comprised 21 unique variants; the five most common of which (P286R, 21 cases; V411L, 13 cases; S297F, 3 cases; A456P, 2 cases; and S459F, 2 cases) were classified as pathogenic based on previous reports and designated as "hotspot" *POLE* mutations for the purpose of this study (Table1).^{7,8,26}

Table 1. POLE variants in TCGA EC.

Protein change	# of cases	Nucleotide substitution	Exon	MSI-H cases (%)	Mutation recurrence in EC	Mutation recurrence pancancer	Number of "benign" results by <i>in silico</i> tools	POLE-score	EDM	Signature 10 contribution
P286R	21	c.857C>G	9	1 (4.8)	Recurrent	Recurrent	0	5-6	Y	0.225-0.978
V411L	13	c.1231G>T/C	13	1 (7.7)	Recurrent	Recurrent	1	4-6	Y	0.000-0.751
S297F	3	c.890C>T	9	2 (66.7)	Recurrent	Recurrent	0	5-6	Y	0.123-0.611
S459F	2	c.1376C>T	14	0 (0)	Recurrent	Recurrent	1	5-6	Y	0.940-0.955
A456P	2	c.1366G>C	14	0 (0)	Recurrent	Recurrent	0	5-6	Y	0.277-0.837
F367S	2	c.1100T>C	11	2 (100)	Recurrent	Recurrent	0	6	Y	0.095-0.100
L424I	2	c.1270C>A	13	2 (100)	Recurrent	Recurrent	1	5 or 3	Y	0.000-0.000
M295R	1	c.884T>G	9	1 (100)	Recurrent	Recurrent	0	6	Y	0.785
P436R	1	c.1307C>G	13	0 (0)	Recurrent	Recurrent	0	6	Y	0.230
M444K	1	c.1331T>A	13	0 (0)	Recurrent	Recurrent	0	5	Y	1.000
R705W	1	c.2113C>T	19	0 (0)	Novel	Novel	1	5	N	0.821
D368Y	1	c.1102G>T	11	1 (100)	Novel	Recurrent	0	4	Y	0.042
M1754V	1	c.5260A>G	39	1 (100)	Novel	Novel	5	3	N	0.000
K1070N	1	c.3210G>T	26	1 (100)	Novel	Novel	1	3	N	0.000
L424V	1	c.1270C>G	13	0 (0)	Recurrent	Recurrent	0	3	Y	0.529
A428T	1	c.1282G>A	13	0 (0)	Novel	Novel	5	3	Y	0.000
R742H	1	c.2225G>A	20	1 (100)	Novel	Recurrent	1	3	N	0.018
Q1335*	1	c.4003C>T	30	1 (100)	Novel	Novel	NA	3	N	0.000
T278M	1	c.833C>T	9	1 (100)	Recurrent	Recurrent	0	3	Y	0.000
A465V	1	c.1394C>T	14	1 (100)	Recurrent	Recurrent	0	3	Y	0.000
S461L	1	c.1382C>T	14	1 (100)	Novel	Novel	0	2	Y	0.000
R114*	1	c.340C>T	5	1 (100)	Recurrent	Recurrent	NA	2	N	0.000
F990C	1	c.2969T>G	25	0 (0)	Novel	Novel	0	1	N	0.000
W1824C	1	c.5472G>T	40	0 (0)	Novel	Novel	0	1	N	0.000
E396G	1	c.1187A>G	12	1 (100)	Recurrent	Recurrent	2	1	Y	0.000
A1140T	1	c.3418G>A	28	1 (100)	Novel	Recurrent	5	1	N	0.000
Y1889C	1	c.5666A>G	41	1 (100)	Novel	Novel	0	1	N	0.000
A781S	1	c.2341G>T	21	1 (100)	Novel	Novel	6	1	N	0.000

R34C	1	c.100C>T	2	0 (0)	Recurrent	Recurrent	1	1	N	0.000
E1461V	1	c.4382A>T	34	1 (100)	Novel	Novel	5	1	N	0.000
R976S	1	c.2926C>A	25	0 (0)	Novel	Novel	1	0	N	0.000
V2025M	1	c.6073G>A	44	1 (100)	Novel	Novel	6	0	N	0.000
A566T	1	c.1696G>A	16	1 (100)	Novel	Novel	2	0	N	0.000
R1386Q	1	c.4157G>A	33	0 (0)	Novel	Novel	2	0	N	0.022
D368*	1	c.1101dupT	11	1 (100)	Novel	Novel	NA	0	Y	0.011
R1321K	1	c.3962G>A	31	1 (100)	Novel	Novel	5	0	N	0.000
Q1049H	1	c.3147G>T	26	1 (100)	Novel	Novel	2	0	N	0.000
R764M	1	c.2291G>T	20	1 (100)	Novel	Novel	0	0	N	0.000
E1698D	1	c.5094G>T	38	1 (100)	Novel	Novel	1	0	N	0.000
A1010T	1	c.3028G>A	25	1 (100)	Novel	Novel	1	0	N	0.000
C402R	1	c.1204T>C	12	1 (100)	Novel	Novel	3	0	Y	0.000
T906I	1	c.2717C>T	24	1 (100)	Novel	Novel	0	0	N	0.000
Q352H	1	c.1056G>T	11	1 (100)	Novel	Novel	4	0	Y	0.000
Q453R	1	c.1358A>G	13	1 (100)	Novel	Novel	3	0	Y	0.000

NA, Not assessable; N, No; Y, Yes. Pathogenic mutations in the exonuclease domain are in bold.

The location of each *POLE* mutation (exonuclease domain vs. non-exonuclease domain), its recurrent or non-recurrent status in endometrial cancer in the TCGA and COSMIC databases and genomic characteristics are shown for all cases in Figure 1. As previously reported,^{1,7,12,26} the five hotspot *POLE* mutations were reliably associated with elevated tumour mutation burden (TMB) (median=268 Mut/Mb), which exceeded 100 mut/Mb (typically used to define ultramutation) in most tumours (33/41). Interestingly, TMB varied between different hotspot mutations (range 37.5 to 791.9 mut/Mb), and among tumours with identical hotspot mutations (eg P286R: 41.9 to 550.1 mut/Mb). *POLE* hotspot-mutant EC typically displayed a high proportion of C>A substitutions (median 32.5%, >20% in 37/41 tumours) and T>G substitutions (median 12.8%), whereas the proportion of C>G substitutions (median 0.3%), and indels (median 0.5%) was small. For comparison, 321 microsatellite stable (MSS), *POLE* wild-type EC all had TMB <100 mut/Mb (median 2.1), lower C>A proportion (median 13.5%) and T>G proportion (median 3.9%), and higher C>G proportion (median 8.9%) and indel proportion (median 7.4%) (Table 2). We defined tumours with *POLE* hotspot mutations as a set of “true positives”, for subsequent identification of genomic alterations associated with pathogenic *POLE* mutations (Table 2).

Of the 41 TCGA EC with a somatic non-hotspot *POLE* mutation, 18 were located within the exonuclease domain. Comparing these to the 23 tumours with non-exonuclease domain mutations, non-hotspot *POLE* exonuclease domain-mutant EC had a higher TMB (median 164.4 versus 42.8 mut/Mb) and C>A proportion (median 20.2% versus 10.8%), and lower C>G proportion (median 0.5% versus 1.0%) and indel proportion (median 5.2% versus 9.5%) (Table 2).

MSI status was available for all TCGA EC, of which 35/82 cases with somatic *POLE* mutations (42.7%) were MSI-H. Comparison between EC with hotspot mutations and non-hotspot mutations within and outside the exonuclease domain revealed striking differences: only 4/41 (9.8%) of the TCGA EC with one of the 5 hotspot mutations were MSI-H, whereas 14/18 (78%) EC with a non-hotspot exonuclease domain mutation and 17/23 (74%) EC with a non-exonuclease domain mutation were MSI-H ($p < 0.0001$). Analysis of the genomic architecture of these tumours revealed notable differences between groups. Tumours with hotspot *POLE* mutations and MSI had a high TMB (median TMB of 339.0 mut/Mb, >100 mut/Mb in all 4 cases), high proportion of C>A and T>G substitutions (median 20.0% and 5.1% respectively), with low proportion of C>G substitutions (median 0.3%) and indels (median 2.8%) (Table 2). Tumours with non-hotspot *POLE* EDM and MSI had lower TMB (median 207.1 mut/Mb, >100 mut/Mb in 9/14 cases), C>A and T>G proportions (median 10.8% and 1.6% respectively), similar proportion of C>G substitutions (median 0.5%) and higher indel proportion (median 6.7%) (Table 2). These differences were greater in tumours with a *POLE* mutation outside the exonuclease domain and concomitant MSI, which had a median TMB of 48.5 mut/Mb (>100 mut/Mb in 6/17 cases), C>A and T>G proportions 9.9% and 1.6% respectively, C>G frequency of 0.9% and median indel proportion of 14.5%. For comparison, of 127 MSI-H EC without a *POLE* mutation (MSI-H EC), only one case had a TMB above

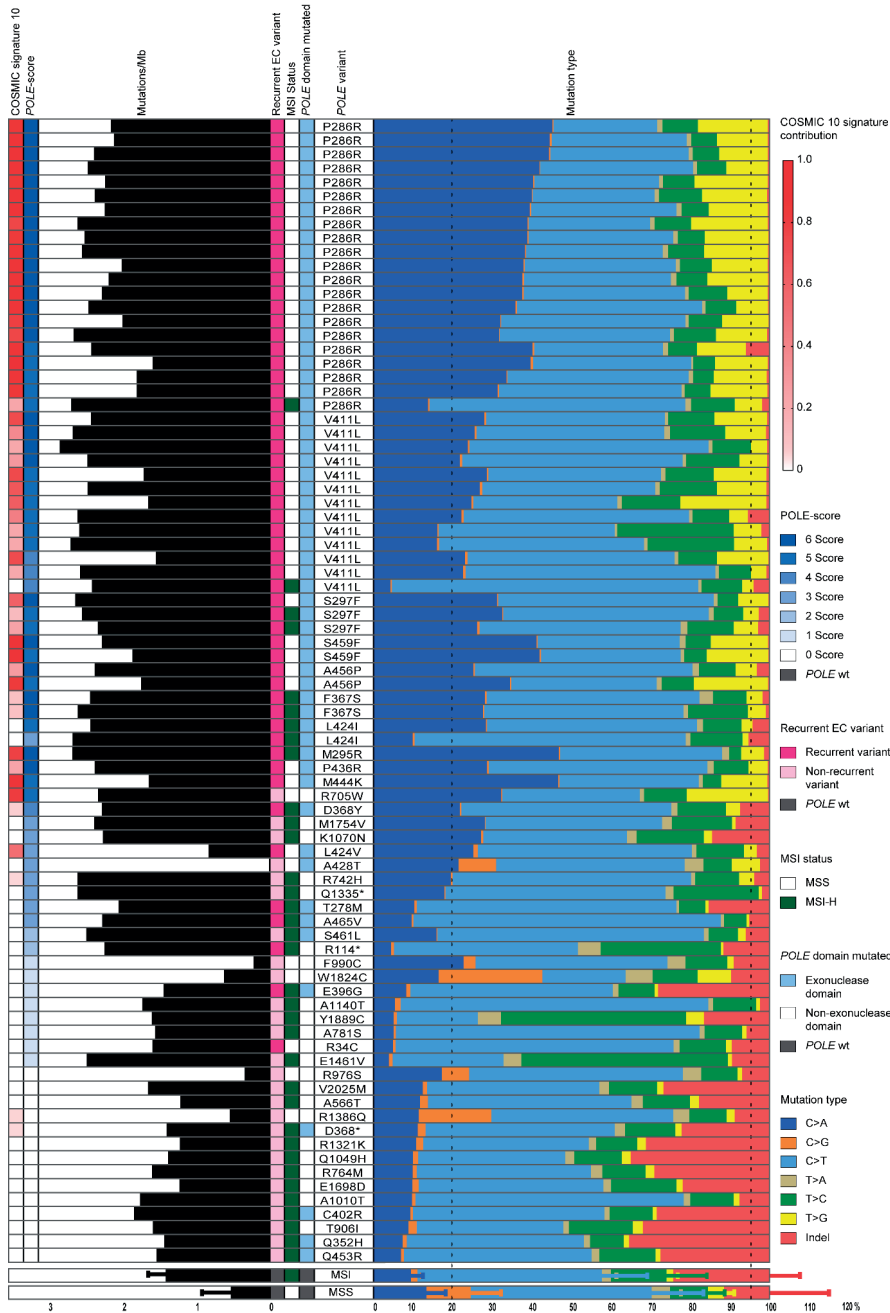


Figure 1. Mutational features of EC with *POLE* variants in the TCGA. The colour scheme for the mutation type is on the right of the histogram. Cases are grouped by mutations, with the most frequent *POLE* mutations in first place. The COSMIC 10 signature contribution, the points obtained in the *POLE* pathogenicity score, the recurrence of the variant in EC, microsatellite instability (MSI) status and *POLE* domain mutated are colour coded (legend on the right of the histogram). Below are the cases without *POLE* mutations; two rows depict the median plus standard deviation of the base change proportions and tumour mutation burden (TMB) of MSI-H and MSS EC without a *POLE* mutation in the TCGA.

Table 2. Tumour mutation burden and SNV/indel by *POLE* mutation location and tumour MSI status in TCGA endometrial cancers.

	EC with hotspot POLE mutations		EC with non-hotspot POLE EDM		EC with POLE non-exonuclease domain mutations		MSI- <i>POLE</i> wt EC	MSS- <i>POLE</i> wt EC		
	MSS	MSI	Total	MSS	MSI	Total			MSS	MSI
Total	n=37	n=4	n=18	4,0	n=14	n=23	n=6	n=17	n=127	n=321
Tumour Mutational Burden										
Median (range)	262.8 (37.5–791.9)	339.0 (237.7–550.1)	164.4 (1.1–530.4)	27.3 (1.1–262.9)	207.1 (26.9–530.4)	42.8 (1.7–452.9)	4 (1.7–236.2)	48.5 (17.4–452.9)	21.5 (0.0–150.5)	2.1 (0.3–59.0)
≥100mut/Mb (%)	33 (80.5)	4 (100)	10 (55.6)	1 (25)	9 (64.3)	7 (30.4)	1 (16.7)	6 (35.3)	1 (0.8)	0 (0)
Percentage of C>G>A:T										
Median (range)	32.5 (4.3–45.2)	20.0 (4.3–32.5)	20.2 (6.9–46.9)	27.0 (21.4–46.7)	10.8 (6.9–46.9)	10.8 (3.9–32.3)	16.9 (5.0–32.3)	9.9 (3.9–28.1)	9.1 (0.0–23.2)	13.5 (2.8–27.6)
Proportion≥20% (%)	37 (90.2)	2 (50)	9 (50)	4 (100)	5 (35.7)	4 (17.4)	2 (33.3)	2 (11.8)	1 (0.8)	25 (7.8)
Percentage of C>G>G:C										
Median (range)	0.3 (0.2–0.6)	0.3 (0.2–0.6)	0.5 (0.2–0.9)	0.7 (0.3–0.9)	0.5 (0.2–2.0)	1.0 (0.2–26.1)	5.0 (0.3–26.1)	0.9 (0.2–2.0)	1.5 (0.0–8.8)	8.9 (0.0–47.7)
Proportion<0.6% (%)	37 (90.2)	3 (75)	11 (61.1)	2 (50)	9 (64.3)	6 (26.1)	1 (16.7)	5 (29.4)	5 (3.9)	2 (0.6)
Percentage of C>G>T:A										
Median (range)	43.6 (26.2–77.4)	40.7 (26.2–63.1)	52.1 (35.2–77.7)	50.9 (35.2–55.3)	52.1 (40.9–77.7)	45.9 (20.5–77.7)	47.2 (21.0–70.2)	44.6 (20.5–77.7)	46.0 (0.0–79.9)	47.9 (4.7–85.5)
Percentage of T:A>A:T										
Median (range)	1.1 (0.5–1.7)	1.1 (0.5–1.6)	1.5 (0.7–4.8)	1.3 (1.1–4.8)	1.5 (0.7–3.4)	2.4 (1.1–6.8)	4.3 (1.1–6.8)	2.3 (1.1–5.9)	1.9 (0.0–8.2)	4.5 (0.0–12.4)
Percentage of T:A>C:G										
Median (range)	8.9 (5.2–29.5)	8.4 (5.2–29.5)	8.9 (3.1–15.1)	7.9 (4.6–12.1)	9.5 (3.1–15.1)	11.8 (9.2–52.2)	10.7 (9.2–11.8)	12.1 (9.5–52.2)	11.7 (2.4–100.0)	9.3 (1.3–30.3)

Percentage of T:A>G:C

Median (range)	12.8 (2.9–21.7)	13.0 (4.0–21.7)	5.1 (2.9–7.0)	2.3 (0.6–11.7)	6.0 (3.2–11.7)	1.6 (0.6–5.8)	1.6 (0.6–20.5)	1.8 (1.2–20.5)	1.6 (0.6–4.5)	1.4 (0.0–8.0)	3.9 (0.0–13.1)
Proportion≥4% (%)	38 (92.7)	36 (97.3)	2 (50)	6 (33.3)	3 (75)	3 (21.4)	3 (13.0)	2 (33.3)	1 (5.9)	6 (4.7)	154 (48.0)

Percentage of small indels

Median (range)	0.5 (0.2–6.0)	0.5 (0.2–6.0)	2.8 (1.8–4.0)	5.2 (0.4–35.5)	1.5 (0.4–3.2)	6.7 (0.9–35.5)	9.5 (0.4–35.1)	8.9 (0.4–9.7)	14.5 (1.9–35.1)	24.8 (0.0–40.2)	7.4 (0.0–80.9)
Proportion<5% (%)	39 (95.1)	35 (94.6)	4 (100)	8 (80)	4 (100)	4 (28.6)	4 (17.4)	1 (16.7)	3 (17.6)	3 (2.4)	76 (23.7)

100 mut/MB (median 21.5) or C>A proportion above 20% (median 9.1%); these cancers also had low T>G proportions (median 1.4%), higher C>G proportion (median 1.5%), and high indel proportion (median 24.8%) (Table 2). Thus, the genomic characteristics of MSI-H endometrial cancers with a *POLE* mutation outside the exonuclease domain are similar to those of MSI-H tumours without a *POLE* mutation. Consequently, the frequency with which MSI co-exists with *POLE* mutation varies by *POLE* mutation location and is reflected in differing genomic architecture – consistent with variable pathogenicity of *POLE* mutations.

These analyses confirm that EC with one of the five somatic hotspot *POLE* EDM carry characteristic genomic sequence alterations distinct from MSI-H and MSS, *POLE*-wild-type EC. These genomic alterations are variably present in cases with non-hotspot *POLE* EDM and are uncommon in EC with *POLE* mutations outside the exonuclease domain. The variation in the genomic correlates of *POLE* mutations by their location is mirrored by variation in the prevalence of MSI in cancers carrying these mutations, and in differences in the genomic architecture of tumours harbouring both defects. Collectively, these data confirm that different *POLE* mutations vary in pathogenicity and underscore the need for its reliable estimation to ensure accurate patient classification.

Establishing a pathogenicity score for somatic *POLE* mutations

Motivated by our preliminary analyses, we next used the TCGA WES data to develop a scoring system to assess pathogenicity of *POLE* mutations (defined as the likelihood they are associated with the characteristic ultramutated phenotype), using the hotspot *POLE* mutations as a truth set. Taking TMB and C>A, T>G, C>G and indel proportions as the most discriminating genomic alterations for these pathogenic mutations, and building on previous work,²⁶ we developed a pragmatic scoring system in which tumours scored one point for each of the following: TMB>100 mut/Mb; C>A ≥20%; T>G ≥4%; C>G ≤0.6%; and indels ≤5%. All 41 TCGA EC with a hotspot *POLE* mutation scored 3–5 points, while 13/41 (31.7%) EC with a non-hotspot *POLE* mutation scored ≥3 points, including 8/18 with exonuclease domain mutations, while 19/23 tumours with *POLE* mutations outside the exonuclease domain had scores ≤ 2, the exceptions being three tumours with score 3 (each of which had likely pathogenic mutations in *POLD1*: D316G, S478N, and L606M) and one scoring 5 points with a *POLE* R705W mutation. We therefore chose to focus on mutations in the exonuclease domain, given the infrequent association of non-exonuclease domain mutations with genomic alterations associated with ultramutated phenotype.

To further refine this scoring system, we considered whether *POLE* variants were recurrent in EC within the COSMIC or TCGA databases, as recurrent mutations are more likely to be pathogenic (that is causal of tumour ultramutation).³⁷ 48/54 (88.9%) EC scoring ≥3 points had a recurrent *POLE* mutation (including hotspot mutations), compared to 7/28 (25%) tumours scoring ≤2 points ($p \leq 0.001$, χ^2 statistics). Restricting the analysis to non-hotspot *POLE* EDM, 7/8 (87.5%) tumours scoring ≥3 points had a recurrent mutation versus 5/10

(50%) scoring ≤ 2 points ($p=0.152$, Fisher's exact test). Based on these results, "recurrence" was incorporated into the final scoring system (Figure 2), which we termed the "POLE pathogenicity score" (POLE-score) (Table 1 and Figure 1).

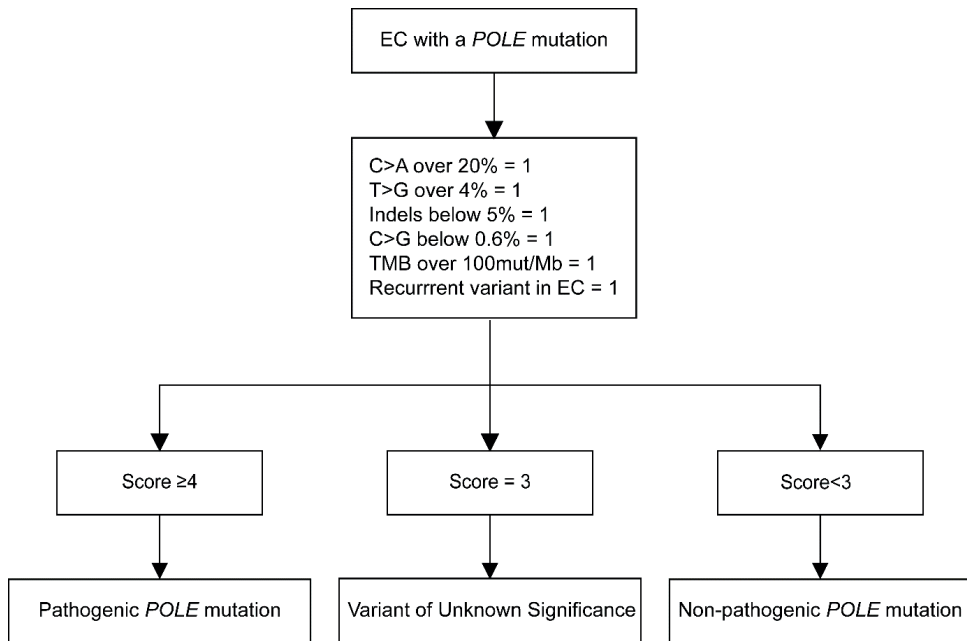


Figure 2, POLE genomic alteration score (POLE-score). Diagnostic scoring system based on mutation type proportion and TMB of the five hotspot *POLE* mutations, as well as the variant recurrence

To define a cut-off for pathogenicity we applied the POLE-score on hotspot *POLE*-mutant, non-hotspot *POLE* EDM and control *POLE* wild-type EC (MSS and MSI-H) in the TCGA cohort. 38/41 (92.7%) EC with a hotspot *POLE* EDM had a POLE-score of ≥ 5 points (Figure 1). The remaining three tumours, all of which harboured a V411L mutation, scored 4 points. In contrast, of the 18 tumours with a non-hotspot *POLE* EDM, seven scored ≥ 4 points (all of which carried mutations recurrent in the TCGA or COSMIC EC databases: F367S, L424I, M295R, P436R, M444K, D368Y), five scored 3 points (four of which carried recurrent mutations: A465V, L424V, T278M, L424I, one with a non-recurrent A428T substitution), and six scored ≤ 2 points (one of which had a recurrent mutation). For comparison, all 321 MSS, *POLE* wild-type EC scored ≤ 3 points and all 127 MSI-H *POLE* wild-type EC scored ≤ 2 .

Based on these data we used a POLE-score of ≥ 4 points to define pathogenicity of *POLE* mutations in EC. When applying this cut-off, 48 EC in the TCGA are classified as having pathogenic *POLE* EDM (all 41 cases with hotspot mutations and 7 with non-hotspot variants); comprising eleven unique mutations, all of which are recurrent in TCGA/COSMIC (Table 3). EC with a POLE-score ≤ 2 were classified as non-pathogenic *POLE* EDM, based on the absence

of genomic alterations associated with ultramutated phenotype. *POLE* EDM with a score of 3 (A465V, L424V, T278M, and A428T) were classified as of uncertain significance.

Table 3. Pathogenic *POLE* EDM based on POLE-score.

Protein change	Nucleotide substitution
P286R	c.857C>G
V411L	c.1231G>T/C
S297F	c.890C>T
S459F	c.1376C>T
A456P	c.1366G>C
F367S	c.1100T>C
L424I	c.1270C>A
M295R	c.884T>G
P436R	c.1307C>G
M444K	c.1331T>A
D368Y	c.1102G>T

To validate the POLE-score, we noted the contribution of COSMIC signature 10 in EC with a *POLE* EDM EC with a POLE-score ≥ 4 points: signature 10 was present in 46 EC (95.8%) (mean 0.623, range 0.000–1.000) and completely absent in two EC (L424I and V411L). The contribution of signature 10 in EC with one of the five hotspot *POLE* EDM ranged from 0.978–0.123. Only in one (20.0%) EC with a *POLE* EDM classified as VUS (L424V) and one (16.7%) EC with a *POLE* EDM classified as non-pathogenic (D368*) activity of COSMIC signature 10 was identified (mean contribution 0.106, range 0.00–0.529 and mean 0.002, range 0.000–0.011 respectively). In comparison, COSMIC signature 10 was identified in 11 (8.7%) MSI-*POLE*wt and 96 (29.9%) MSS-*POLE*wt EC (mean signature 10 contribution 0.002, range 0.000–0.048, and mean 0.017, range 0.000–0.218 respectively).

Relationship between pathogenicity of somatic *POLE* mutations, microsatellite Instability and clinical outcome

The co-existence of *POLE* mutations and MMRd/MSI in EC,^{26,38} and the variation in its prevalence by *POLE* mutation location, raise important questions about which is the initial, presumably dominant factor determining tumour phenotype and clinical outcome. To further investigate this, we used the POLE-score to stratify TCGA cases into predicted pathogenic and non-pathogenic *POLE* mutations using a score of ≥ 4 . 9/49 (18.4%) EC with a predicted pathogenic *POLE* mutation (including 4 known hotspot mutations) were MSI-H, compared to 26/33 (78.8%) tumours with a predicted non-pathogenic mutation ($p \leq 0.0001$ χ^2 statistic). Restricting the analysis to tumours with *POLE* EDM, 9/48 (18.8%) cases with a predicted pathogenic EDM (including hotspot mutations) were MSI-H as opposed to 9/11 (81.8%) with a predicted non-pathogenic EDM ($p \leq 0.0001$ Fisher's exact test). Interestingly,

further stratification suggested similar variation between likely pathogenic *POLE* mutations, as only 2/34 EC with a P286R or V411L mutation were MSI-H, compared to 7/14 EC with one of the other 9 predicted pathogenic mutations ($p=0.0012$). Thus, *POLE* mutations co-existent with MSI in EC are more likely to be non-exonuclease, non-pathogenic mutations, though this is not universally the case.

To investigate the clinical outcome of *POLE* exonuclease domain-mutant EC with concomitant MMRd, we identified 30 such patients from a pooled analysis of 3,236 EC (Table 4). 5-year recurrence-free survival (RFS) for this subgroup was 83.2%, with 5-year Overall Survival (OS) of 80.9% (Figure 3) (corresponding figures for 24 patients with stage I disease were 84.2% and 85.4% respectively) (supplementary material, Figure S1), seemingly contrasting with the 5-year RFS and OS of 92–100% previously reported for *POLE* exonuclease domain-mutant EC.^{4,5,7} To clarify this, we stratified patients according to predicted pathogenic versus non-pathogenic EDM using POLE-score and analysed their clinical outcome. For cases that lacked WES data and which *POLE* EDM had not been previously described in the TCGA, we considered all mutations different to the ones present in table 3 (mutations deemed pathogenic using the POLE-score) as VUS. This revealed that the 13 cases with one of the 11 mutations classified as likely pathogenic by POLE-score (Table 3) had 5-year RFS of 92.3%, while the corresponding value for the 14 patients with EDM classified as likely non-pathogenic/VUS was 76.2% ($p=0.40$, log rank test) (Figure 3). While the clinical behaviour of tumours with combined MMRd/MSI and *POLE* EDM may vary based on the pathogenicity of the latter, this difference was not statistically significant, possibly owing to insufficient power/small numbers of cases, and it is not possible to determine the prognosis of this subgroup with certainty at present.

Table 4. Clinicopathological features of MMRd-*POLE*mut EC.

	MMRd- <i>POLE</i> mut EC n=30 (100%)
Age, years	
Mean [range]	66.5 [27–87]
<60	9 (30)
60–70	8 (26.7)
>70	13 (43.3)
Stage	
IA	14 (46.6)
IB	10 (33.3)
II	3 (10)
III	4 (10)
IV	0 (0)
Histology	
Endometrioid	25 (83.3)
Serous	1 (3.3)
Mixed	2 (6.7)
Clear cell	3 (6.7)
Grade	
1–2	19 (63.3)
3	11 (36.7)
Myometrium invasion	
<50%	13 (43.3)
>50%	15 (56.7)
LVS1	
Absent	21 (70)
Present	4 (13.3)
Missing	5 (16.7)
Treatment	
None	7 (23.3)
Radiotherapy	10 (33.3)
Chemotherapy	1 (3.3)
Radiochemotherapy	5 (16.7)
Unknown	7 (23.3)
<i>POLE</i> mutations	
Pathogenic mutation	14 (46.7)
Non-pathogenic mutation/variant of unknown significance	16 (53.3)

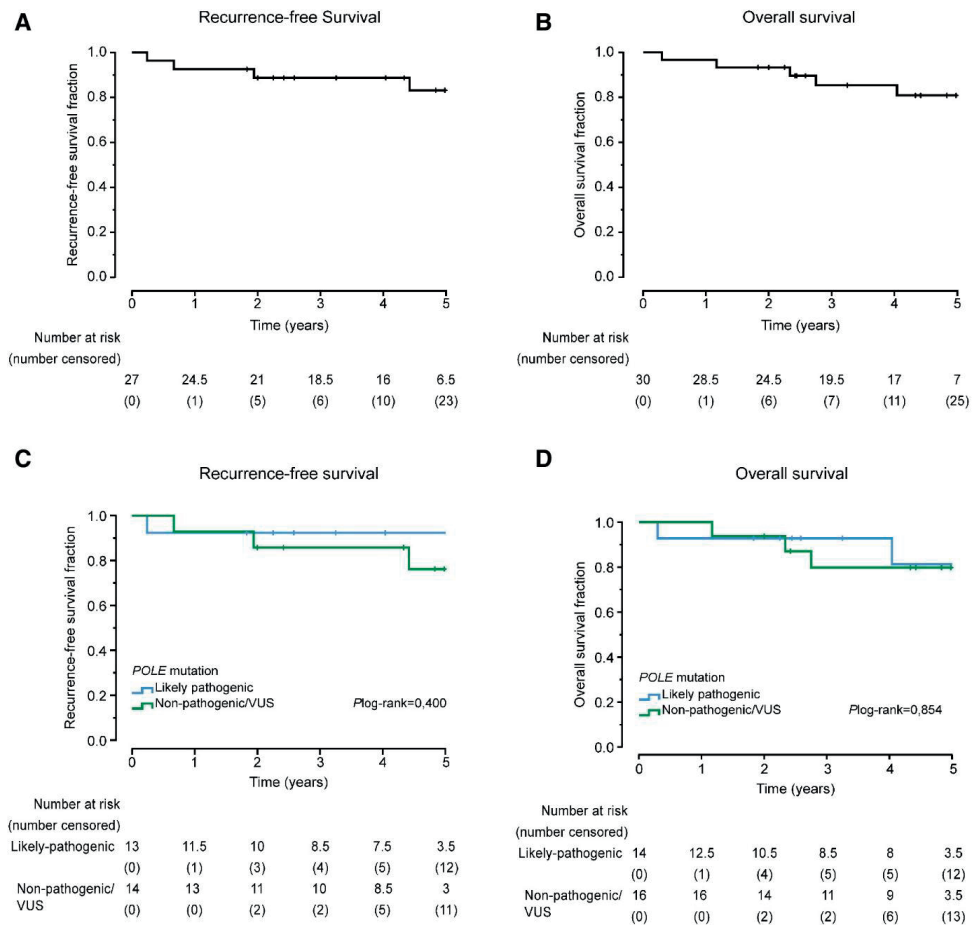


Figure 3. Clinical outcome of MMRd-*POLE*mut EC. Kaplan–Meier survival curves of RFS (A) and OS (B) of MMRd-*POLE*mut EC. RFS and OS of MMRd-*POLE*mut EC with a pathogenic *POLE* EDM (mutation present in Table 3) versus all other tumours MMRd-*POLE*mut (C and D).

Estimation of pathogenicity of somatic *POLE* mutations in the absence of exome or genome sequencing

Somatic mutation profiling in clinical practice is typically performed by targeted panel sequencing, rather than WES/WGS approaches at present. To develop a classification tool for EC with somatic non-hotspot *POLE* mutations that can be implemented using such data, we used mutation location, prior data and *in silico* tools which estimate the probability that a mutation is damaging. We first noted that nearly all (>95%) *POLE* mutations outside the exonuclease domain are classified as non-pathogenic by POLE-score. We next noted that in the case of exonuclease domain mutations reported in TCGA, the POLE-score can be used to estimate pathogenicity (Table 3). We finally noted that for *POLE* EDM not present in TCGA, *in silico* prediction tools could be used to estimate pathogenicity. Further exploration of this revealed that 10/11 *POLE* EDM classified as pathogenic by POLE-score in the TCGA cases were universally predicted to be disruptive by six *in silico* tools, the exception being an L424I substitution predicted to be deleterious by five tools but benign by one. However, of five *POLE* EDM present in TCGA but classified as non-pathogenic by POLE-score, one (S461L, POLE-score 2) was predicted to be damaging by all six tools, while another variant (E396G, POLE-score 1) was predicted to be damaging by four tools. Furthermore, of four mutations classified as uncertain pathogenicity with POLE-score of 3, three (A465V, L424V, T278M) were considered damaging by all *in silico* prediction tools while the other (A428T) was considered benign by 5/6 prediction tools. Thus, *in silico* tools appear sensitive but not specific for prediction of pathogenic *POLE* EDM, in the sense of their being likely causal for tumour ultramutation.

To define the extent of the problem of ascribing pathogenicity to *POLE* mutations in clinical practice, we identified 296/3840 (7.7%) tumours with a somatic *POLE* mutation from EC cohorts other than TCGA (Table 5, supplementary material, Table S3).^{6,7,9-15,17-22,24,25} Of 296 non-TCGA *POLE*-mutant EC reported in the literature, 15 had mutations outside the exonuclease domain, and 254 carried mutations in the exonuclease domain previously detected in TCGA and classified by POLE-scores as pathogenic (249 cases), of uncertain pathogenicity (four cases), or non-pathogenic (one case). The remaining 27 cancers with *POLE* EDM could not be classified by POLE-score because their genomic correlates are yet to be determined by WES. This represents 9.1% of all reported *POLE* mutations, or 0.7% of non-TCGA molecularly-subtyped EC to date. Of these 27 unique *POLE* EDM, one was predicted to be benign by most *in silico* tools, while the others were predicted to be damaging by ≥ 4 tools (Table 5). The greater negative predictive value than positive predictive value of these tools, noted above, suggests that benign predictions should carry more weight, and that the former are non-pathogenic mutations, while the latter should be regarded as of uncertain pathogenicity. Cases such as these could be prioritised for more comprehensive sequencing, such as WES to provide sufficient data to determine their POLE-score.

Table 5. *POLE* EDM in EC not described previously in TCGA.

Protein change	Number of cases	Nucleotide substitution	Exon	MSI cases (%)	Mutation recurrent in EC	Mutation recurrent pancancer	Number of benign results by <i>in silico</i> tools
A426V	1 (2.4)	c.1277C>T	13	Unknown	Recurrent	Recurrent	1
A456G	1 (2.4)	c.1367C>G	14	Unknown	Novel	Novel	1
A456V	1 (2.4)	c.1367C>T	14	0 (0)	Novel	Recurrent	0
D275V	1 (2.4)	c.824A>T	9	Unknown	Novel	Novel	0
D287E	2 (4.9)	c.861T>A/G	9	1 (50)	Novel	Novel	1
D462E	1 (2.4)	c.1386T>A/G	14	0 (0)	Novel	Novel	1
F367C	1 (2.4)	c.1100T>G	11	0 (0)	Novel	Novel	0
F367L	1 (2.4)	c.1101T>A/G	11	1 (100)	Novel	Novel	0
F367V	1 (2.4)	c.1099T>G	11	0 (0)	Novel	Novel	0
G364V	1 (2.4)	c.1091G>T	11	1 (100)	Novel	Novel	0
G388S	1 (2.4)	c.1162G>A	12	0 (0)	Novel	Novel	0
H342R	1 (2.4)	c.1025A>G	11	Unknown	Novel	Novel	5
L283F	1 (2.4)	c.847C>T	9	1 (100)	Novel	Novel	1
L424P	1 (2.4)	c.1271T>C	13	0 (0)	Novel	Novel	0
M299I	1 (2.4)	c.897G>A/C/T	9	0 (0)	Novel	Novel	0
M405I	1 (2.4)	c.1215G>A/C/T	12	0 (0)	Novel	Novel	2
P286L	1 (2.4)	c.857C>T	9	1 (100)	Novel	Recurrent	0
P286S	1 (2.4)	c.856C>T	9	0 (0)	Novel	Recurrent	0
P436S	2 (4.9)	c.1306C>T	13	1 (50)	Novel	Novel	0
P441L	1 (2.4)	c.1322C>T	13	0 (0)	Novel	Recurrent	1
R375Q	1 (2.4)	c.1124G>A	12	0 (0)	Novel	Novel	1
S297Y	1 (2.4)	c.889T>G	9	0 (0)	Novel	Recurrent	0
T323A	1 (2.4)	c.967A>G	10	1 (100)	Novel	Novel	1
T457M	1 (2.4)	c.1370C>T	14	0 (0)	Novel	Recurrent	2
T483I	1 (2.4)	c.1448C>T	14	0 (0)	Novel	Novel	0

Recommendations for classification of somatic *POLE* mutations in clinical practice

Based on the analyses above, we developed a pragmatic tool to classify EC with somatic *POLE* mutations in clinical practice, shown in Table 6.^{39,40} For cases with WES/WGS, *POLE*-score and the presence or absence of MSI/MMRd can be used to stratify cases into *POLEmut*, MMRd, or one of the other two TCGA subgroups depending on p53 status (Singh, et al).⁴¹ It is important to note that the presence of a *POLE* mutation alone is insufficient to classify tumours as “*POLEmut*”, and that classification of tumours with combined *POLE* mutation and MMRd/MSI depends on the *POLE*-score (i.e. genomic correlates) of the *POLE*

mutation. For cases without WES/WGS, POLE-score can be used if the *POLE* mutation has previously been reported in the TCGA. Where this is not the case, *in silico* tools can be used to triage tumours for more comprehensive WES/WGS to permit calculation of POLE-score and subsequent classification.

Table 6. Recommendations for the interpretation of somatic *POLE* mutations in EC. Recommendations to classify EC with *POLE* mutations with (A) POLE-score available, or (B) POLE-score absent.

A

<i>POLE</i> mutation	Predicted pathogenicity	MSI/MMR status	Treatment recommendation
Exonuclease domain mutation	Pathogenic	MSS/MMRp	<i>POLE</i> mut EC
POLE-score ≥4	Pathogenic	MSI/MMRd	<i>POLE</i> mut EC ¹
Exonuclease domain mutation	Non-pathogenic	MSS/MMRp	<i>POLE</i> wt EC
POLE-score <4	Non-pathogenic	MSI/MMRd	MMRd EC
Non-exonuclease domain mutation	–	MSS/MMRp	NSMP/p53abn EC ²
	–	MSI/MMRd	MMRd EC

If tumours-only sequencing is performed, detection of L424V variant should prompt consideration of germline testing^{37,38}

B

<i>POLE</i> mutation	Predicted pathogenicity	MSI/MMR status	Treatment recommendation
Exonuclease domain mutation predicted to be pathogenic by ≥4 <i>in silico</i> prediction tools	VUS	MSS/MMRp	WES or NSMP/p53abn EC ^{2,3}
	VUS	MSI/MMRd	WES or MMRd EC ³
Exonuclease domain mutation predicted to be NON-pathogenic by >1 <i>in silico</i> prediction tool	Non-pathogenic	MSS/MMRp	NSMP/p53abn EC ²
	Non-pathogenic	MSI/MMRd	MMRd EC
Non-exonuclease domain mutation	–	MSS/MMRp	NSMP/p53abn EC ²
	–	MSI/MMRd	MMRd EC

If tumours-only sequencing is performed, detection of L424V variant should prompt consideration of germline testing^{39,40}

1 Treat as *POLE*mut EC (based on genomic alteration) independently of MMR status (insufficient data to suggest otherwise)

2 p53-IHC should be performed to exclude a p53abn EC

3 Treat conservatively i.e. as MMRd/NSMP or send for WES

VUS: Variant of Unknown Significance. NSMP: No Specific Molecular Profile.

Discussion

The development of pragmatic surrogate markers has accelerated the clinical implementation of the molecular EC classification. The presence of a pathogenic *POLE* EDM is causal for ultramutated EC, a subtype associated with enhanced immune response^{2,42} and excellent clinical outcome.^{6,7,13} De-escalating adjuvant treatment in these patients is currently under investigation in the randomised PORTEC4a trial. However, interpretation of *POLE* sequence variants is challenging due to lack of standardized criteria, other than for the most common “hotspot” mutations for which pathogenicity is reliably established. We aimed to generate tools to estimate the pathogenicity of *POLE* mutations using WES data, and to guide the management of cases where comprehensive genomic profiling is not available.

Using cases with recurrent “hotspot” *POLE* EDM as a truth set, we identified their characteristic genomic correlates to generate a “POLE-score”. In addition to correctly classifying all cases with *POLE* hotspot mutations in the TCGA cohort, it classified a further six *POLE* EDM as likely pathogenic. Four exonuclease domain mutations had POLE-score of 3 and were classified as being of uncertain pathogenicity, while three cases with *POLE* mutations outside the exonuclease domain had a POLE-score of 3 – all of which carried a plausibly pathogenic *POLD1* mutation that could explain the mutational spectrum.⁸ Intriguingly, a single case with a *POLE* mutation outside the exonuclease domain (R705W) was classified as pathogenic by POLE-score. The location of the mutation within the catalytic domain, close to the polymerase active sites, may explain this mutational spectrum, however the clinical significance of this is unclear at present.

Because POLE-score relies on WES or WGS to estimate TMB and mutation proportions, it is unable to assign pathogenicity in the case of novel *POLE* mutations detected by targeted sequencing, where breadth is typically inadequate to estimate these parameters. Although this represents a potential challenge in clinical practice where targeted approaches are common, our pooled analysis suggests this situation is uncommon – only 0.7% of EC at the time of writing; a figure that will drop over the coming years as more WES/WGS data are accrued. We found that pathogenicity of such variants is not reliably predicted by *in silico* tools, which have low specificity. We suggest an approach to these tumours (outlined in Table 6), which may guide the use of additional sequencing (e.g. WES) to permit calculation of POLE-score in these cases. Although WES remains relatively costly compared to targeted approaches, such outlay is modest against that of local or systemic therapy, and thus remains a possible approach for cases where a significant treatment decision hangs in the balance.

Our study confirms the complex relationship between *POLE* mutations and DNA mismatch repair deficiency/microsatellite instability. Perhaps most straightforward are those with *POLE* mutations outside the exonuclease domain: these appear to be passengers secondary to the hypermutator phenotype and should be classified as MMRd. Coexistence of *POLE*

EDM with MSI/MMRd is relatively uncommon, occurring in 3.4% cases in TCGA and 0.9% cases of molecular subtyped tumours in our pooled series (this variation probably reflects a combination of targeted sequencing with enrichment for pathogenic *POLE* mutations in the latter cases). This group of tumours is heterogeneous. Those with *POLE* mutations predicted as pathogenic by POLE-score and MSI had genomic architecture similar to *POLE* hotspot-mutant/MSS tumours, supporting their classification as *POLE*mut EC. Those with *POLE* mutations predicted as non-pathogenic by POLE-score and MSI more closely resembled *POLE*-wild-type MSI cases, supporting their classification as MMRd EC. *POLE* EDM in combination with MMR loss cause a distinct mutational signature in EC (COSMIC Signature 14)^{1,38} – the observation that this is not universal in cases with both defects supports the notion that these tumours are a heterogeneous group, where MSI/MMRd could be acquired after *POLE* EDM and vice versa, with differing impacts on prognosis. Interestingly, while data were limited, patients with combined pathogenic *POLE* EDM and MSI appeared to have good clinical outcome in our pooled cohort (5-year RFS 92.3%), though additional cases are required before this can be concluded.

In conclusion, our work provides guidance in the diagnostic interpretation of *POLE* mutations in endometrial cancer in the presence and absence of WES data. Tumours with any of the 11 *POLE* EDM identified in the TCGA and classified as pathogenic by POLE-score should be classified as “*POLE* ultramutated” EC independently of MMRd/MSI status. For cases where a *POLE* EDM not present in the TCGA is identified, and WES data are available, POLE-score can be used for classification. In the absence of WES data, classification should be informed by the results of POLE-score on mutations reported in the TCGA and classified in Table 3. *In silico* prediction tools have limited value but may be able to identify benign changes and triage cases for WES/WGS. The guidelines we provide will evolve over time but will allow for almost all tumours encountered to be classified into a molecular subtype based on currently available information.

Acknowledgements

This work was supported by the Dutch Cancer Society (KWF-YIG 8232-31648, AL and TB), the National Institute for Health Research (NIHR) Oxford Biomedical Research Centre (BRC) (DNC) and the BC Cancer Foundation and Michael Smith Foundation for Health Research (JM). DNC is funded by an Advanced Clinician Scientist Fellowship from Cancer Research UK (C26642/A27963) and was previously funded by a Clinician Scientist Fellowship from the Academy of Medical Sciences/Health Foundation. The views expressed are those of the author(s) and not necessarily those of the NHS, the NIHR or the Department of Health. We would like to thank Tissue bank Bern for providing tissues for study purposes.

Conflicts of interest statement:

No potential conflicts of interest were declared.

References

1. Alexandrov LB, Nik-Zainal S, Wedge DC, et al: Signatures of mutational processes in human cancer. *Nature* 500:415-21, 2013
2. van Gool IC, Eggink FA, Freeman-Mills L, et al: POLE Proofreading Mutations Elicit an Antitumor Immune Response in Endometrial Cancer. *Clin Cancer Res* 21:3347-3355, 2015
3. Howitt BE, Shukla SA, Sholl LM, et al: Association of Polymerase e-Mutated and Microsatellite-Unstable Endometrial Cancers With Neoantigen Load, Number of Tumor-Infiltrating Lymphocytes, and Expression of PD-1 and PD-L1. *JAMA Oncol* 1:1319-23, 2015
4. Stelloo E, Nout RA, Osse EM, et al: Improved Risk Assessment by Integrating Molecular and Clinicopathological Factors in Early-stage Endometrial Cancer-Combined Analysis of the PORTEC Cohorts. *Clin Cancer Res* 22:4215-24, 2016
5. Talhouk A, McConechy MK, Leung S, et al: A clinically applicable molecular-based classification for endometrial cancers. *Br J Cancer* 113:299-310, 2015
6. McConechy MK, Talhouk A, Leung S, et al: Endometrial Carcinomas with POLE Exonuclease Domain Mutations Have a Favorable Prognosis. *Clin Cancer Res* 22:2865-73, 2016
7. Cancer Genome Atlas Research N, Kandoth C, Schultz N, et al: Integrated genomic characterization of endometrial carcinoma. *Nature* 497:67-73, 2013
8. Rayner E, van Gool IC, Palles C, et al: A panoply of errors: polymerase proofreading domain mutations in cancer. *Nat Rev Cancer* 16:71-81, 2016
9. Bellone S, Bignotti E, Lonardi S, et al: Polymerase epsilon (POLE) ultra-mutation in uterine tumors correlates with T lymphocyte infiltration and increased resistance to platinum-based chemotherapy in vitro. *Gynecol Oncol* 144:146-152, 2017
10. Bellone S, Centritto F, Black J, et al: Polymerase epsilon (POLE) ultra-mutated tumors induce robust tumor-specific CD4+ T cell responses in endometrial cancer patients. *Gynecol Oncol* 138:11-7, 2015
11. Billingsley CC, Cohn DE, Mutch DG, et al: Polymerase varepsilon (POLE) mutations in endometrial cancer: clinical outcomes and implications for Lynch syndrome testing. *Cancer* 121:386-94, 2015
12. Church DN, Briggs SE, Palles C, et al: DNA polymerase epsilon and delta exonuclease domain mutations in endometrial cancer. *Hum Mol Genet* 22:2820-8, 2013
13. Church DN, Stelloo E, Nout RA, et al: Prognostic significance of POLE proofreading mutations in endometrial cancer. *J Natl Cancer Inst* 107:402, 2015
14. Eggink FA, Van Gool IC, Leary A, et al: Immunological profiling of molecularly classified high-risk endometrial cancers identifies POLE-mutant and microsatellite unstable carcinomas as candidates for checkpoint inhibition. *Oncoimmunology* 6:e1264565, 2017
15. Espinosa I, Lee CH, D'Angelo E, et al: Undifferentiated and Dedifferentiated Endometrial Carcinomas With POLE Exonuclease Domain Mutations Have a Favorable Prognosis. *Am J Surg Pathol* 41:1121-1128, 2017
16. Hussein YR, Weigelt B, Levine DA, et al: Clinicopathological analysis of endometrial carcinomas harboring somatic POLE exonuclease domain mutations. *Mod Pathol* 28:505-14, 2015

17. Jansen AM, van Wezel T, van den Akker BE, et al: Combined mismatch repair and POLE/POLD1 defects explain unresolved suspected Lynch syndrome cancers. *Eur J Hum Genet* 24:1089-92, 2016
18. Le Gallo M, O'Hara AJ, Rudd ML, et al: Exome sequencing of serous endometrial tumors identifies recurrent somatic mutations in chromatin-remodeling and ubiquitin ligase complex genes. *Nat Genet* 44:1310-5, 2012
19. Meng B, Hoang LN, McIntyre JB, et al: POLE exonuclease domain mutation predicts long progression-free survival in grade 3 endometrioid carcinoma of the endometrium. *Gynecol Oncol* 134:15-9, 2014
20. Wong A, Quirk CH, Wong WL, et al: Mutation spectrum of POLE and POLD1 mutations in South East Asian women presenting with grade 3 endometrioid endometrial carcinomas. *Gynecol Oncol* 141:113-20, 2016
21. Zhao S, Choi M, Overton JD, et al: Landscape of somatic single-nucleotide and copy-number mutations in uterine serous carcinoma. *Proc Natl Acad Sci U S A* 110:2916-21, 2013
22. Soumerai TE, Donoghue MTA, Bandlamudi C, et al: Clinical Utility of Prospective Molecular Characterization in Advanced Endometrial Cancer. *Clin Cancer Res* 24:5939-5947, 2018
23. Stelloo E, Bosse T, Nout RA, et al: Refining prognosis and identifying targetable pathways for high-risk endometrial cancer; a TransPORTEC initiative. *Mod Pathol* 28:836-44, 2015
24. Talhouk A, McConechy MK, Leung S, et al: Confirmation of ProMisE: A simple, genomics-based clinical classifier for endometrial cancer. *Cancer* 123:802-813, 2017
25. Kommos S, McConechy MK, Kommos F, et al: Final validation of the ProMisE molecular classifier for endometrial carcinoma in a large population-based case series. *Ann Oncol* 29:1180-1188, 2018
26. Shinbrot E, Henninger EE, Weinhold N, et al: Exonuclease mutations in DNA polymerase epsilon reveal replication strand specific mutation patterns and human origins of replication. *Genome Res* 24:1740-50, 2014
27. Umar A, Boland CR, Terdiman JP, et al: Revised Bethesda Guidelines for hereditary nonpolyposis colorectal cancer (Lynch syndrome) and microsatellite instability. *J Natl Cancer Inst* 96:261-8, 2004
28. Petljak M, Alexandrov LB: Understanding mutagenesis through delineation of mutational signatures in human cancer. *Carcinogenesis* 37:531-40, 2016
29. Kim J, Mouw KW, Polak P, et al: Somatic ERCC2 mutations are associated with a distinct genomic signature in urothelial tumors. *Nature Genetics* 48:600, 2016
30. Kumar P, Henikoff S, Ng PC: Predicting the effects of coding non-synonymous variants on protein function using the SIFT algorithm. *Nat Protoc* 4:1073-81, 2009
31. Choi Y, Sims GE, Murphy S, et al: Predicting the functional effect of amino acid substitutions and indels. *PLoS One* 7:e46688, 2012
32. Adzhubei IA, Schmidt S, Peshkin L, et al: A method and server for predicting damaging missense mutations. *Nat Methods* 7:248-9, 2010
33. Mi H, Poudel S, Muruganujan A, et al: PANTHER version 10: expanded protein families and functions, and analysis tools. *Nucleic Acids Res* 44:D336-42, 2016

34. Hecht M, Bromberg Y, Rost B: Better prediction of functional effects for sequence variants. *BMC Genomics* 16 Suppl 8:S1, 2015
35. Ioannidis NM, Rothstein JH, Pejaver V, et al: REVEL: An Ensemble Method for Predicting the Pathogenicity of Rare Missense Variants. *Am J Hum Genet* 99:877-885, 2016
36. León-Castillo A, Gilvazquez E, Nout R, et al: Clinicopathological and Molecular Characterisation of "Multiple Classifier" Endometrial Carcinomas. *J Pathol* In press, 2019
37. Campbell BB, Light N, Fabrizio D, et al: Comprehensive Analysis of Hypermutation in Human Cancer. *Cell*, 2017
38. Haradhvala NJ, Kim J, Maruvka YE, et al: Distinct mutational signatures characterize concurrent loss of polymerase proofreading and mismatch repair. *Nat Commun* 9:1746, 2018
39. Valle L, Hernandez-Illan E, Bellido F, et al: New insights into POLE and POLD1 germline mutations in familial colorectal cancer and polyposis. *Hum Mol Genet* 23:3506-12, 2014
40. Palles C, Cazier JB, Howarth KM, et al: Germline mutations affecting the proofreading domains of POLE and POLD1 predispose to colorectal adenomas and carcinomas. *Nat Genet* 45:136-44, 2013
41. Singh N, Piskorz A, Bosse T, et al: p53 Immunohistochemistry is an Accurate Surrogate for TP53 Mutational Analysis in Endometrial Carcinoma Biopsies. *J Pathol*, In press
42. Talhouk A, Derocher H, Schmidt P, et al: Molecular Subtype Not Immune Response Drives Outcomes in Endometrial Carcinoma. *Clin Cancer Res* 25:2537-2548, 2019

Supplementary material

Supplementary Tables

Supplementary table S1. *POLE* mutations reported in endometrial carcinoma in COSMIC or TCGA.

<i>POLE</i> variant	CDS Mutation	EC with <i>POLE</i> variant in COSMIC	EC with <i>POLE</i> variant in TCGA	Total number of EC with <i>POLE</i> variant in COSMIC and TCGA
p.P286R	c.857C>G	160	21	181
p.V411L	c.1231G>T	101	13	114
p.A456P	c.1366G>C	18	2	20
p.S297F	c.890C>T	15	3	18
p.P436R	c.1307C>G	4	1	5
p.F367(S^C)	c.?	2	2	4
p.S459F	c.1376C>T	2	2	4
p.A465V	c.1394C>T	3	1	4
p.P286(R^S)	c.?	4	0	4
p.E396G	c.1187A>G	2	1	3
p.L424V	c.?	2	1	3
p.M295R	c.884T>G	2	1	3
p.R114*	c.340C>T	2	1	3
p.T278M	c.833C>T	2	1	3
p.P286(R^S297F)	c.?	3	0	3
p.P436L	c.1307C>T	3	0	3
p.L424I	c.1270C>A	0	2	2
p.M444K	c.1331T>A	1	1	2
p.R34C	c.100C>T	1	1	2
p.G7V	c.20G>T	2	0	2
p.R1879C	c.?	2	0	2
p.S1644L	c.4931C>T	2	0	2
p.S297A	c.889T>G	2	0	2
p.V1514A	c.4541T>C	2	0	2
p.A1010T	c.3028G>A	0	1	1
p.A1140T	c.3418G>A	0	1	1
p.A428T	c.1282G>A	0	1	1
p.A566T	c.1696G>A	0	1	1
p.A781S	c.2341G>T	0	1	1
p.C402R	c.1204T>C	0	1	1
p.D368*	c.1101dupT	0	1	1
p.D368Y	c.1102G>T	0	1	1
p.E1461V	c.4382A>T	0	1	1
p.E1698D	c.5094G>T	0	1	1
p.F990C	c.2969T>G	0	1	1
p.K1070N	c.3210G>T	0	1	1
p.M1754V	c.5260A>G	0	1	1

Supplementary table S1. Continued

p.Q1049H	c.3147G>T	0	1	1
p.Q1335*	c.4003C>T	0	1	1
p.Q352H	c.1056G>T	0	1	1
p.Q453R	c.1358A>G	0	1	1
p.R1321K	c.3962G>A	0	1	1
p.R1386Q	c.4157G>A	0	1	1
p.R705W	c.2113C>T	0	1	1
p.R742H	c.2225G>A	0	1	1
p.R764M	c.2291G>T	0	1	1
p.R976S	c.2926C>A	0	1	1
p.S461L	c.1382C>T	0	1	1
p.T906I	c.2717C>T	0	1	1
p.V2025M	c.6073G>A	0	1	1
p.W1824C	c.5472G>T	0	1	1
p.Y1889C	c.5666A>G	0	1	1
p.A1375V	c.4124C>T	1	0	1
p.A426V	c.1277C>T	1	0	1
p.A957V	c.2870C>T	1	0	1
p.A992T	c.2974G>A	1	0	1
p.C1703Y	c.5108G>A	1	0	1
p.D1768G	c.5303A>G	1	0	1
p.D275V	c.824A>T	1	0	1
p.D319E	c.957T>G	1	0	1
p.D406E	c.1218C>G	1	0	1
p.E1424G	c.4271A>G	1	0	1
p.E1947D	c.5841G>T	1	0	1
p.E396fs*28	c.1186_1187insG	1	0	1
p.F1907L	c.5721C>A	1	0	1
p.F367C	c.1100T>G	1	0	1
p.F367fs*15	c.1096delT	1	0	1
p.F367L	c.?	1	0	1
p.G1343D	c.4028G>A	1	0	1
p.G770W	c.2308G>T	1	0	1
p.H1833N	c.5497C>A	1	0	1
p.H342R	c.1025A>G	1	0	1
p.K1897N	c.5691G>T	1	0	1
p.K777T	c.2330A>C	1	0	1
p.K792R	c.2375A>G	1	0	1
p.L424P	c.?	1	0	1
p.L698fs*94	c.2091delC	1	0	1
p.M299V	c.895A>G	1	0	1
p.P1205L	c.3614C>T	1	0	1
p.P282S	c.844C>T	1	0	1

p.P331H	c.?	1	0	1
p.P441L	c.?	1	0	1
p.P856H	c.2567C>A	1	0	1
p.Q2217*	c.6649C>T	1	0	1
p.R1125*	c.3373C>T	1	0	1
p.R1233*	c.3697C>T	1	0	1
p.R1371*	c.4111C>T	1	0	1
p.R1386W	c.4156C>T	1	0	1
p.R1436Q	c.4307G>A	1	0	1
p.R1508C	c.4522C>T	1	0	1
p.R1519C	c.4555C>T	1	0	1
p.R1626C	c.4876C>T	1	0	1
p.R1932C	c.5794C>T	1	0	1
p.R2017C	c.6049C>T	1	0	1
p.R494W	c.1480C>T	1	0	1
p.S1040Y	c.3119C>A	1	0	1
p.S1380L	c.4139C>T	1	0	1
p.S297Y	c.890C>A	1	0	1
p.T323A	c.967A>G	1	0	1
p.T457M	c.1370C>T	1	0	1
p.Y458H	c.1372T>C	1	0	1

Supplementary table S2. In silico tools results for *POLE* mutations found in endometrial carcinoma in TCGA.

Variant	SIFT	PANTHER	SNAP2	PolyPhen2	PROVEAN	REVEL_class	Number of benign results by in silico tools
A1010T	Deleterious	probably damaging	effect	Probably damaging	Deleterious	Likely benign	1
A1140T	Tolerated	Probably damaging	neutral	Benign	Neutral	Likely benign	5
A428T	Tolerated	Probably damaging	neutral	Benign	Neutral	Likely benign	5
A456P	Deleterious	probably damaging	effect	Probably damaging	Deleterious	likely disease causing	0
A465V	Deleterious	Probably damaging	effect	Probably damaging	Deleterious	likely disease causing	0
A566T	Deleterious	probably damaging	neutral	Probably damaging	Deleterious	Likely-benign	2
A781S	Tolerated	possibly damaging	neutral	Benign	Neutral	Likely benign	6
C402R	Tolerated	probably damaging	effect	possibly damaging	Deleterious	Likely benign	3
D368*	NA	NA	NA	NA	NA	NA	NA
D368Y	Deleterious	probably damaging	effect	Probably damaging	Deleterious	likely disease causing	0
E1461V	Tolerated	possibly damaging	neutral	Benign	Deleterious	Likely benign	5
E1698D	Deleterious	Probably damaging	effect	Probably damaging	Deleterious	Likely benign	1
E396G	Tolerated	probably damaging	effect	Probably damaging	Deleterious	Likely benign	2
F367S	Deleterious	probably damaging	effect	Probably damaging	Deleterious	likely disease causing	0
F990C	Deleterious	probably damaging	effect	Probably damaging	Deleterious	likely disease causing	0
K1070N	Deleterious	probably damaging	effect	Probably damaging	Deleterious	Likely benign	1
L424I	Deleterious	Probably damaging	effect	Probably damaging	Neutral	likely disease causing	1
L424V	Deleterious	Probably damaging	effect	Probably damaging	Deleterious	likely disease causing	0
M1754V	Tolerated	probably damaging	neutral	Benign	Neutral	Likely-benign	5
M295R	Deleterious	probably damaging	effect	Probably damaging	Deleterious	likley disease causing	0
M444K	Deleterious	Probably damaging	effect	Probably damaging	Deleterious	likely disease causing	0
P286R	Deleterious	probably damaging	effect	Probably damaging	Deleterious	likely disease causing	0
P436R	Deleterious	probably damaging	effect	Probably damaging	Deleterious	likely disease causing	0

Q1049H	Tolerated	probably damaging	effect	Probably damaging	Deleterious	Likely-benign	2
Q1335*	NA	NA	NA	NA	NA	NA	NA
Q352H	Deleterious	probably damaging	neutral	Benign	Neutral	Likely benign	4
Q453R	Deleterious	Probably damaging	neutral	Benign	Deleterious	Likely benign	3
R114*	NA	NA	NA	NA	NA	NA	NA
R1321K	Tolerated	probably damaging	neutral	Benign	Neutral	Likely benign	5
R1386Q	Tolerated	probably damaging	effect	Probably damaging	Deleterious	Likely benign	2
R34C	Deleterious	probably damaging	effect	Probably damaging	Deleterious	Likely benign	1
R705W	Deleterious	probably damaging	effect	Probably damaging	Deleterious	Likely benign	1
R742H	Deleterious	probably damaging	effect	Probably damaging	Deleterious	Likely benign	1
R764M	Deleterious	probably damaging	effect	Probably damaging	Deleterious	likely disease causing	0
R976S	Deleterious	Probably damaging	effect	Probably damaging	Deleterious	Likely benign	1
S297F	Deleterious	Probably damaging	effect	Probably damaging	Deleterious	likely disease causing	0
S459F	Deleterious	probably damaging	effect	Probably damaging	Deleterious	Likely benign	1
S461L	Deleterious	probably damaging	effect	Probably damaging	Deleterious	likely disease causing	0
T278M	Deleterious	probably damaging	effect	Probably damaging	Deleterious	likely disease causing	0
T906I	Deleterious	probably damaging	effect	Probably damaging	Deleterious	likely disease causing	0
V2025M	Tolerated	probably benign	neutral	possibly damaging	Neutral	Likely benign	6
V411L	Deleterious	Probably damaging	effect	Probably damaging	Deleterious	Likely benign	1
W1824C	Deleterious	probably damaging	effect	Probably damaging	Deleterious	likely disease causing	0
Y1889C	Deleterious	Probably damaging	effect	Probably damaging	Deleterious	likely disease causing	0

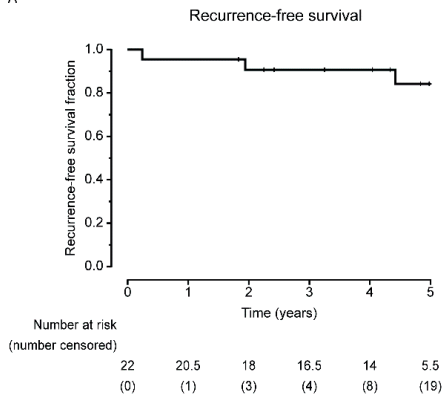
Supplementary table S3. In silico tools results for non-hotspot *POLE* mutations found in endometrial carcinoma cohorts published not present in TCGA.

Variant	SIFT	PANTHER	SNAP2	PolyPhen2	PROVEAN	REVEL	Number of benign results by in silico tools
A426V	Deleterious	probably damaging	Effect	Probably damaging	Deleterious	Likely-benign	1
A456G	Deleterious	probably damaging	Effect	probably damaging	Deleterious	Likely-benign	1
A456V	Deleterious	probably damaging	Effect	probably damaging	Deleterious	likely disease causing	0
A957V	Deleterious	probably damaging	Effect	probably damaging	Deleterious	likely disease causing	0
A992T	Tolerated	probably damaging	Neutral	Benign	Deleterious	Likely-benign	4
D275V	Deleterious	probably damaging	Effect	probably damaging	Deleterious	likely disease causing	0
D287E	Deleterious	probably damaging	Effect	probably damaging	Deleterious	Likely-benign	1
D462E	Deleterious	probably damaging	Effect	probably damaging	Deleterious	Likely-benign	1
E1424G	Tolerated	probably damaging	Effect	probably damaging	Deleterious	likely disease causing	1
E1947D	Tolerated	probably benign	Neutral	Benign	Neutral	Likely-benign	6
F367C	Deleterious	probably damaging	Effect	probably damaging	Deleterious	likely disease causing	0
F367L	Deleterious	probably damaging	Effect	probably damaging	Deleterious	likely disease causing	0
F367V	Deleterious	probably damaging	Effect	probably damaging	Deleterious	likely disease causing	0
G364V	Deleterious	probably damaging	Effect	probably damaging	Deleterious	likely disease causing	0
G388S	Deleterious	probably damaging	Effect	probably damaging	Deleterious	likely disease causing	0
G770W	Deleterious	probably damaging	Effect	probably damaging	Deleterious	likely disease causing	0
G7V	Deleterious	probably damaging	Effect	Benign	Deleterious	Likely-benign	2
H342R	Tolerated	probably damaging	Neutral	Benign	Neutral	Likely-benign	5
K717N	Tolerated	probably damaging	Neutral	Benign	Neutral	Likely-benign	5
L283F	Deleterious	probably damaging	Effect	probably damaging	Deleterious	Likely-benign	1
L424P	Deleterious	probably damaging	Effect	probably damaging	Deleterious	likely disease causing	0
L698Cfs*94	NA	NA	NA	NA	NA		NA
M299I	Deleterious	probably damaging	Effect	probably damaging	Deleterious	likely disease causing	0

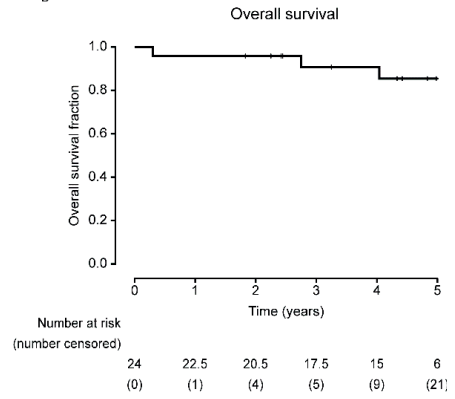
M405I	Deleterious	probably damaging	Effect	possibly damaging	Deleterious	Likely-benign	2
P1164S	Deleterious	probably damaging	Effect	probably damaging	Deleterious	likely disease causing	0
P286L	Deleterious	probably damaging	Effect	probably damaging	Deleterious	likely disease causing	0
P286S	Deleterious	probably damaging	Effect	Probably damaging	Deleterious	likely disease causing	0
P436S	Deleterious	probably damaging	Effect	probably damaging	Deleterious	likely disease causing	0
P441L	Deleterious	probably damaging	Effect	probably damaging	Deleterious	Likely-benign	1
Q2217*	NA	NA	NA	NA	NA		NA
R1436Q	Deleterious	probably damaging	Effect	probably damaging	Deleterious	Likely-benign	1
R1519C	Deleterious	probably damaging	Effect	probably damaging	Deleterious	Likely-benign	1
R375Q	Deleterious	probably damaging	Effect	probably damaging	Deleterious	Likely-benign	1
S297Y	Deleterious	probably damaging	Effect	probably damaging	Deleterious	likely disease causing	0
T323A	Deleterious	probably damaging	Neutral	probably damaging	Deleterious	likely disease causing	1
T457M	Deleterious	probably damaging	Neutral	probably damaging	Deleterious	Likely-benign	2
T483I	Deleterious	probably damaging	Effect	probably damaging	Deleterious	likely disease causing	0
V1514A	Tolerated	probably damaging	Neutral	Benign	Deleterious	Likely-benign	4

Supplementary Figure

A



B



Supplementary figure S1. Clinical outcome of MMRd-*POLE*mut EC. Kaplan–Meier survival curve of RFS (A) and OS (B) of stage I MMRd-*POLE*mut EC

