



Universiteit
Leiden
The Netherlands

Immunosuppression has long-lasting effects on circulating follicular regulatory T cells in kidney transplant recipients

Niu, Q.; Rojas, A.M.; Dieterich, M.; Roelen, D.L.; Clahsen-Van Groningen, M.C.; Wang, L.N.; ... ; Baan, C.C.

Citation

Niu, Q., Rojas, A. M., Dieterich, M., Roelen, D. L., Clahsen-Van Groningen, M. C., Wang, L. N., ... Baan, C. C. (2020). Immunosuppression has long-lasting effects on circulating follicular regulatory T cells in kidney transplant recipients. *Frontiers In Immunology*, 11. doi:10.3389/fimmu.2020.01972

Version: Publisher's Version
License: [Creative Commons CC BY 4.0 license](#)
Downloaded from: <https://hdl.handle.net/1887/3184249>

Note: To cite this publication please use the final published version (if applicable).



Immunosuppression Has Long-Lasting Effects on Circulating Follicular Regulatory T Cells in Kidney Transplant Recipients

Qian Niu^{1,2†}, Alejandra Mendoza Rojas^{2,3,4†}, Marjolein Dieterich^{2,3}, Dave L. Roelen⁵, Marian C. Clahsen-van Groningen^{2,3,6}, Lanlan Wang¹, Teun van Gelder^{2,3,4}, Dennis A. Hesselink^{2,3}, Nicole M. van Besouw^{2,3} and Carla C. Baan^{2,3*†}

OPEN ACCESS

Edited by:

Oriol Bestard,
Hospital Universitario de
Bellvitge, Spain

Reviewed by:

Idelberto Raul Badell,
Emory University, United States
Estela Paz Artal,
University Hospital October 12, Spain

*Correspondence:

Carla C. Baan
c.c.baan@erasmusmc.nl

[†]These authors have contributed
equally to this work

‡ORCID:

Carla C. Baan
orcid.org/0000-0003-2274-2788

Specialty section:

This article was submitted to
Alloimmunity and Transplantation,
a section of the journal
Frontiers in Immunology

Received: 05 May 2020

Accepted: 21 July 2020

Published: 28 August 2020

Citation:

Niu Q, Mendoza Rojas A, Dieterich M,
Roelen DL, Clahsen-van
Groningen MC, Wang L, van Gelder T,
Hesselink DA, van Besouw NM and
Baan CC (2020) Immunosuppression
Has Long-Lasting Effects on
Circulating Follicular Regulatory T
Cells in Kidney Transplant Recipients.
Front. Immunol. 11:1972.
doi: 10.3389/fimmu.2020.01972

¹ Department of Laboratory Medicine, West China Hospital, Sichuan University, Chengdu, China, ² The Rotterdam Transplant Group, Department of Internal Medicine–Nephrology & Transplantation, Erasmus MC, University Medical Center Rotterdam, Rotterdam, Netherlands, ³ Rotterdam Transplant Group, Erasmus MC, University Medical Center Rotterdam, Rotterdam, Netherlands, ⁴ The Rotterdam Transplant Group, Department of Clinical Pharmacology, University Medical Center Rotterdam, Rotterdam, Netherlands, ⁵ Department of Immunohematology and Blood Transfusion, Leiden University Medical Center, Leiden, Netherlands, ⁶ The Rotterdam Transplant Group, Department of Pathology, Erasmus MC, University Medical Center Rotterdam, Rotterdam, Netherlands

Background: FoxP3⁺ follicular regulatory T cells (Tfr) have been identified as the cell population controlling T follicular helper (Tfh) cells and B cells which, are both involved in effector immune responses against transplanted tissue.

Methods: To understand the biology of Tfr cells in kidney transplant patients treated with tacrolimus and mycophenolate mofetil (MMF) combination immunosuppression, we measured circulating (c)Tfh and cTfr cells in peripheral blood by flow cytometry in $n = 211$ kidney transplant recipients. At the time of measurement patients were 5–7 years after transplantation. Of this cohort of patients, 23.2% (49/211) had been previously treated for rejection. Median time after anti-rejection therapy was 4.9 years (range 0.4–7 years). Age and gender matched healthy individuals served as controls.

Results: While the absolute numbers of cTfh cells were comparable between kidney transplant recipients and healthy controls, the numbers of cTfr cells were 46% lower in immunosuppressed recipients ($p < 0.001$). More importantly, in transplanted patients, the ratio of cTfr to cTfh was decreased (median; 0.10 vs. 0.06), indicating a disruption of the balance between cTfr and cTfh cells. This shifted balance was observed for both non-rejectors and rejectors. Previous pulse methylprednisolone or combined pulse methylprednisolone + intravenous immunoglobulin anti-rejection therapy led to a non-significant 30.6% (median) and 51.2% (median) drop in cTfr cells, respectively when compared to cTfr cell numbers in transplant patients who did not receive anti-rejection therapy. A history of alemtuzumab therapy did lead to a significant decrease in cTfr cells of 85.8% (median) compared with patients not treated with anti-rejection therapy ($p < 0.0001$). No association with tacrolimus or MMF pre-dose concentrations was found.

Conclusion: This cross-sectional study reveals that anti-rejection therapy with alemtuzumab significantly lowers the number of cTfr cells in kidney transplant recipients. The observed profound effects by these agents might dysregulate cTfr functions.

Keywords: kidney transplantation, antibody mediated rejection, anti-rejection therapy, donor specific antibodies, flow cytometry, circulating Tfr, circulating Tfh, transplantation immunology

INTRODUCTION

Improvement of long-term outcomes after kidney transplantation remains a challenge (1–5). The most recent findings based on the United States registry data and Collaborative Transplant Study across 21 European countries, report only a slight improvement in renal allograft survival since the early 2000's (6–8). Antibody-mediated immune responses are recognized as an important factor in late kidney allograft failure (9–11). This immune response is refractory to treatment with conventional immunosuppression (12–14).

Follicular T helper (Tfh) cells play a critical role in B cell-dependent antibody generation (15–17). These Tfh cells colocalize with B cells in germinal centers within secondary lymphoid organs (SLOs) and are specialized in assisting antigen activated B cells to differentiate into antibody-producing plasma cells (18, 19). This immune response is controlled by follicular regulatory T (Tfr) cells, a unique subset of regulatory T (Treg) cells, that inhibits Tfh and B cell responses (20, 21). Tfr cells exert immune inhibitory functions through down-regulating the co-stimulatory molecule CD86 on B cells (22), producing inhibitory cytokines e.g., interleukin (IL)-10 and mediating cytotoxicity (23). Both Tfr and Tfh cells express high levels of CXC chemokine receptor 5 (CXCR5) and programmed death 1 (PD-1) (24), as well as the transcriptional factor B cell lymphoma (Bcl)-6 (25, 26). Tfr cells can also express Helios a transcription factor expressed by natural Tregs, and a marker reflecting enhanced immunosuppressive functions (27). From studies in patients suffering from auto-immune disease we know that the dynamic balance between Tfr and Tfh cells is important for immune homeostasis and tolerance. An aberrant Tfr/Tfh ratio has been linked to the development of autoantibody immunity-mediated diseases including systemic lupus erythematosus (28), rheumatoid arthritis (29), and myasthenia gravis (30). Also in kidney transplant recipients it was shown that antibody mediated rejection (ABMR) and chronic allograft dysfunction are associated with a disturbed balance of circulating (c)Tfh and cTfr cells (31, 32).

The role of Tfh cells in alloreactivity was shown by de Graaf et al. (33) and de Leur et al. (34) who found that Tfh cells are present in biopsies diagnosed as T cell-mediated rejection (TCMR) and ABMR and that these Tfh cells provide help to

alloantigen-activated B cells (35). From experimental transplant models we know that Tfh cells are capable of stimulating alloantibody production which in turn mediates the humoral response against the allograft (36, 37). These findings highlight the importance of Tfh cells in the process of transplant rejection while the first data about Tfr cells point to their impaired function in controlling the actions of Tfh cells in the allogeneic responses after organ transplantation (32).

Immunosuppressive drugs, including the calcineurin inhibitor (CNI) tacrolimus, may decrease the number and impair the function of Tfh and Tfr cells (38). However, to what extent immunosuppressive therapies affect the biology of Tfr and Tfh cells after kidney transplantation is unknown.

In the present observational study, the absolute numbers of Tfr cells and their relation to Tfh cells in immunosuppressed renal transplant recipients and healthy controls was investigated. In addition, the impact of anti-rejection therapy on these cell populations was studied.

MATERIALS AND METHODS

Study Population

A cohort of 211 renal transplant recipients transplanted between 2012 and 2014 was sampled cross sectionally at the timepoint of 5.0–7.7 years (median 5.3) post-transplant. All patients had a functional graft at the time of blood sampling, kidney function was assessed by estimated glomerular filtration rate (eGFR, mL/min per 1.73 m²) as calculated by the CKD-EPI equation. Transplant recipients ($n = 202$) received induction therapy with basiliximab [Simulect®; Novartis, Basel, Switzerland; 20 mg intravenously on days 0 and 4], rabbit anti-thymocyte globulin [Thymoglobulin®; Sanofi Genzyme, United States ($n = 2$) or rituximab [MabThera®; Roche, Basel, Switzerland ($n = 7$) for blood group ABO incompatible kidney transplantation [rituximab 375 mg/m² 4 weeks before transplantation; tacrolimus 0.1 mg/kg *b.i.d.*, mycophenolate mofetil (MMF) 1,000 mg *b.i.d.*; prednisone 20 mg once daily starting 2 weeks before transplantation]. The post-operative immunosuppressive regimen after transplantation consisted of tacrolimus (Prograf®; Astellas Pharma, Tokyo, Japan; aiming for pre-dose concentrations of 10–15 ng/mL in weeks 1–2, 8–12 ng/mL in weeks 3–4 and 5–10 ng/mL thereafter), MMF (Cellcept®; Roche, Basel, Switzerland; starting dose of 1 g twice a day, aiming for pre-dose concentrations of 1.5–3.0 mg/L) and prednisolone. Prednisolone was tapered to 5 mg at month 3 and withdrawn at months 4–5. In patients who experienced a rejection event, prednisolone was reintroduced to 10 mg once daily. Rejection was defined as presumed, treated acute rejection

Abbreviations: Alem, alemtuzumab; ART, anti-rejection therapy; BPR, biopsy-proven rejection; CNIs, calcineurin inhibitors; cTfh cell, circulating follicular helper T cell; cTfr cell, circulating follicular regulatory T cell; DSA, donor-specific antibodies; IVIg, intravenous immunoglobulin; KTx, kidney transplantation; MMF, mycophenolate mofetil; MP, methylprednisolone; PBMC, peripheral blood mononuclear cells; Pred, prednisolone; Tac, tacrolimus; TCMR, T cell-mediated rejection.

(in patients who had no biopsy or an inconclusive biopsy) or biopsy-proven rejection (BPR) as part of routine clinical care by a renal pathologist using 2 μ m paraffin sections stained for HE, PAS, Jones and immunohistochemistry for C4d on 4 μ m sections. After the completion of the study, all biopsies were reviewed again by a clinical pathologist (M.C.C.) in a blinded fashion per the Banff'15 classification (39). Patients suffering from vascular (Banff grade 2) or tubulo-interstitial (Banff grade 1) rejection received high-dose pulse intravenous methylprednisolone as first-line therapy (methylprednisolone 1,000 mg i.v. for 3 consecutive days), whereas patients suffering from severe or glucocorticoid-resistant acute rejection were treated with alemtuzumab (one or two doses of 30 mg s.c.). Patients suffering from ABMR or mixed-type rejection (TCMR and ABMR) were treated with methylprednisolone plus intravenous immunoglobulins (IVIg) (40, 41). While the majority of patients in our study were treated according to the above mentioned guidelines, there are some instances where biopsy scores were changed after the second biopsy revision done according to the Banff'15 classification. A disparate treatment from the guidelines was also chosen for a few patients for other clinical reasons (e.g., suspicion of humoral immunity components or patient history).

Thirty age and gender-matched healthy controls were also included. All patients (MEC-2016-718, NL59284.078.16) and healthy controls (MEC-2018-1623.; NL66443.078.18) provided written informed consent. The baseline demographic and clinical characteristics of patients and controls are summarized in **Table 1**.

Flow Cytometry

Fresh peripheral blood samples (5–7 years post-transplant) were collected in 6 ml heparin tubes (BD Biosciences, San Jose, CA) and stored at room temperature on a tube-roller. Blood samples were processed within 2 h after drawing blood. Peripheral blood mononuclear cells (PBMCs) were isolated using Ficoll gradient medium (Histopaque-1077, Sigma-Aldrich, St. Louis, MI). In brief, the surface and intracellular staining of PBMCs were performed using the following monoclonal antibodies (mAbs): anti-CD3 BV510 (OKT3, Biolegend, San Diego, CA); anti-CD4 BV421 (RPA-4, Biolegend); anti-CXCR5 AF647 (RF8B2, BD Biosciences); anti-Foxp3 PE (PCH101, Invitrogen, Amsterdam, the Netherlands); anti-PD-1 APC-Cy7 (EH12.2H7, Biolegend); Helios PerCP-Cy5.5 (22F6, Biolegend). The following CD4⁺ T cell subpopulations were studied and defined as: total cTfh (CD3⁺CD4⁺CXCR5⁺Foxp3⁻), total cTfr (CD3⁺CD4⁺CXCR5⁺Foxp3⁺), PD-1⁺cTfh (CD3⁺CD4⁺CXCR5⁺Foxp3⁻PD-1⁺), PD-1⁺cTfr (CD3⁺CD4⁺CXCR5⁺Foxp3⁺PD-1⁺), and Helios⁺cTfr (CD3⁺CD4⁺CXCR5⁺Foxp3⁺Helios⁺). To calculate absolute numbers of CD19⁺, CD4⁺ cells and the above described subsets, BD multi-test 6-color[®] was used in combination with BD TruCount Tubes[®] (BD Biosciences). Absolute numbers of CD4T cell subsets were calculated using the percentages of these subsets within the total CD4 population. Cells were acquired using a BD Canto II flow cytometer and results were analyzed with Kaluza V2.1 software. Gating strategies are shown in **Figure 2**.

TABLE 1 | Characteristics of kidney transplantation recipients and healthy controls.

	KTx patients	HCS
Recipient		
Number	211	30
Age ^a , years, median (range)	55 (21-77)	55 (25-78)
Male gender, <i>n</i> (%)	143 (67.8)	21 (70.0)
Primary disease, <i>N</i> (%)		
Hypertensive nephropathy	41 (19.4)	
Polycystic kidney disease	33 (15.6)	
Diabetes mellitus	32 (15.2)	
Glomerulonephritis/pyelonephritis	17 (8.1)	
IgA nephropathy	15 (7.1)	
Focal segmental glomerulosclerosis	9 (4.3)	
Other	38 (18.0)	
Unknown	26 (12.3)	
Donor		
Donor age, years, median (range)	54 (0-82)	
Living donor, <i>n</i> (%)	155 (73.5)	
HLA mismatch, <i>n</i> (%)		
0-2	60 (28.4)	
3-4	92 (43.6)	
5-6	59 (28.0)	
Induction therapy		
Anti-CD25 mAb	202 (95.7)	
Rituximab	7 (3.3)	
Anti-thymocyte globulin	2 (1.0)	
Immunosuppression, <i>n</i> (%)		
Tac/MMF	181 (85.8)	
Tac monotherapy	30 (14.2)	
Previous KTx, <i>n</i> (%)		
Second/third/fourth KTx	19 (9.0)/5 (2.2)/3 (1.3)	
PRA, mean (range)		
Current	5.0 (0-83)	
Highest	12.8 (0-100)	
Time after KTx, years, median (range)	5.3 (5.0-7.7)	
Occurrence of rejection, <i>n</i> (%)		
No	162 (76.8)	
Yes	49 (23.2)	
First episode within 1Y after KTx	38 (18.0)	
Rejection type, <i>n</i> (%)		
TCMR/ABMR/mixed TCMR and ABMR*	29 (13.7)/15 (7.1)/3 (1.4)	

^aAge at transplantation for patients. KTx, kidney transplantation; HCS, healthy controls; Pred, prednisolone; Tac, tacrolimus; MMF, mycophenolate mofetil; Anti-CD25 mAb, anti-CD25 monoclonal antibody; Ab, antibody; 1Y, 1 year; TCMR, T cell-mediated rejection; cABMR, chronic antibody-mediated rejection *According to the Banff 2015 classification (39).

Detection of Anti-HLA Antibodies

The complement-dependent cytotoxicity cross-match was negative before transplantation in all patients. Serum samples from recipients were screened for the presence of HLA antibodies using the Lifecodes Lifescreen Deluxe (LMX) kit, according to the manufacturer's manual (Immucor Transplant Diagnostics

Inc. Stamford, CT, USA) 5–7 years post-transplant at the time of blood sampling. Anti-HLA class I (HLA-A, HLA-B, or HLA-C) or HLA class II (HLA-DR or HLA-DQ) antibodies were further analyzed with a Luminex Single Antigen assay using LABScreen HLA class I and class II antigen beads (One Lambda, Canoga Park, GA, USA), as described in our previous study (42). The presence of donor-specific antibodies (DSA) was determined by comparing the various HLA specificities with donor HLA typing.

Statistical Analyses

Data are presented as median with interquartile range (IQR), unless otherwise specified. The Mann–Whitney *U*-test was used for comparisons between two groups. The Kruskal–Wallis test with Dunn’s test for multiple comparisons was used for comparisons between three or more groups. The association between two variables was analyzed by Spearman’s correlation and graphically represented by scatter plot. Statistical analysis was performed by IBM SPSS version 25 (Armonk, NY,

USA). *P*-values with a two-sided $\alpha < 0.05$ were considered statistically significant.

RESULTS

Characteristics of the Kidney Transplant Recipients

Table 1 depicts the characteristics of the study cohort and healthy controls (HCs). The majority of patients were male (67.8%) and received their first kidney transplant (87.5%) from a living donor (73.5%). Out of 211 patients, 49 patients ($n = 5$ presumed, treated rejection, and $n = 44$ BPR) (23.2%) experienced a rejection of whom 32 recipients (15.2%) experienced one rejection episode, 14 patients (6.6%) had two rejection episodes and 3 patients (1.4%) had three rejection episodes. The majority of patients, 38 out of 49 (77.6%), developed a rejection within the first year after transplantation.

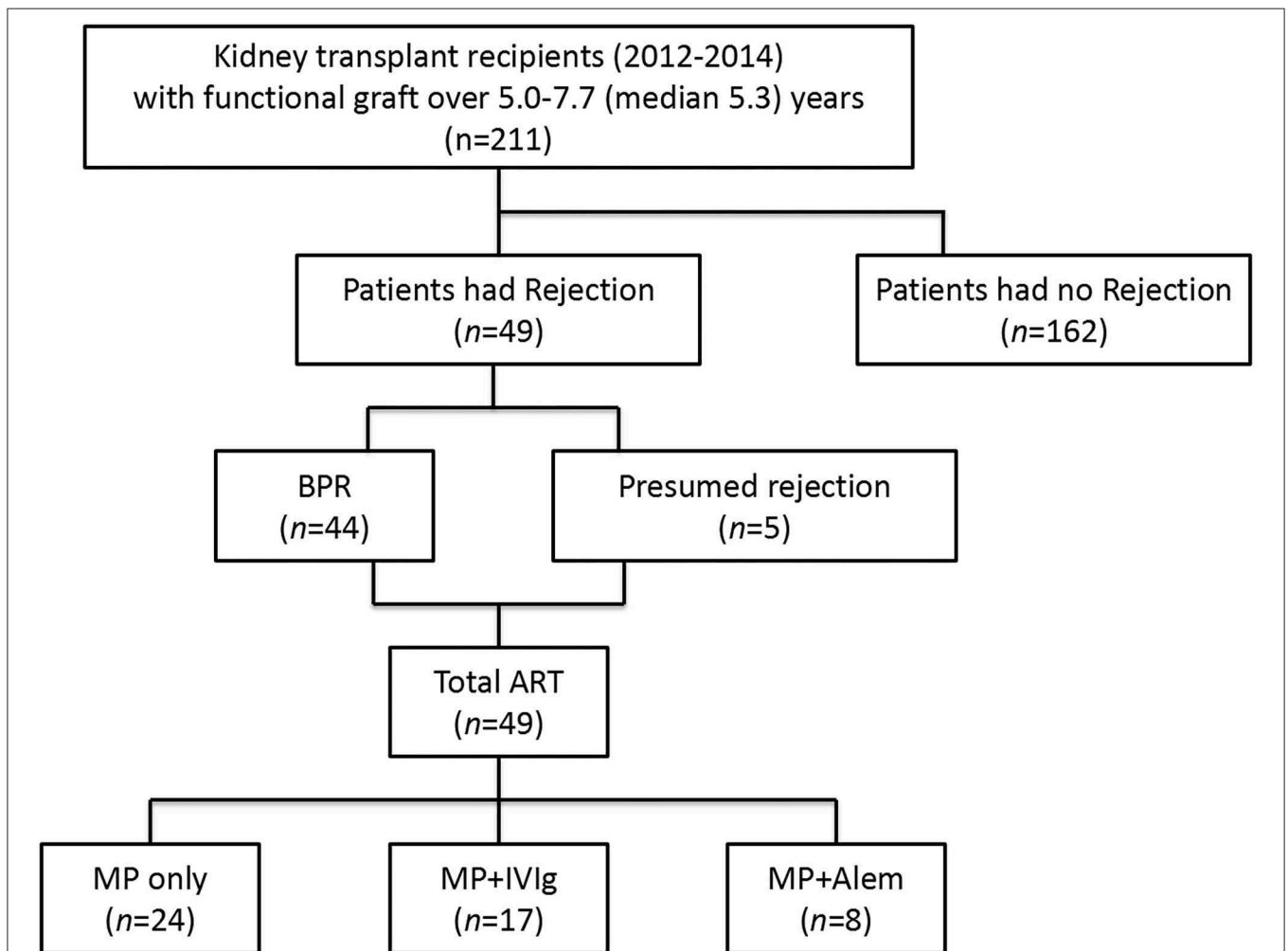
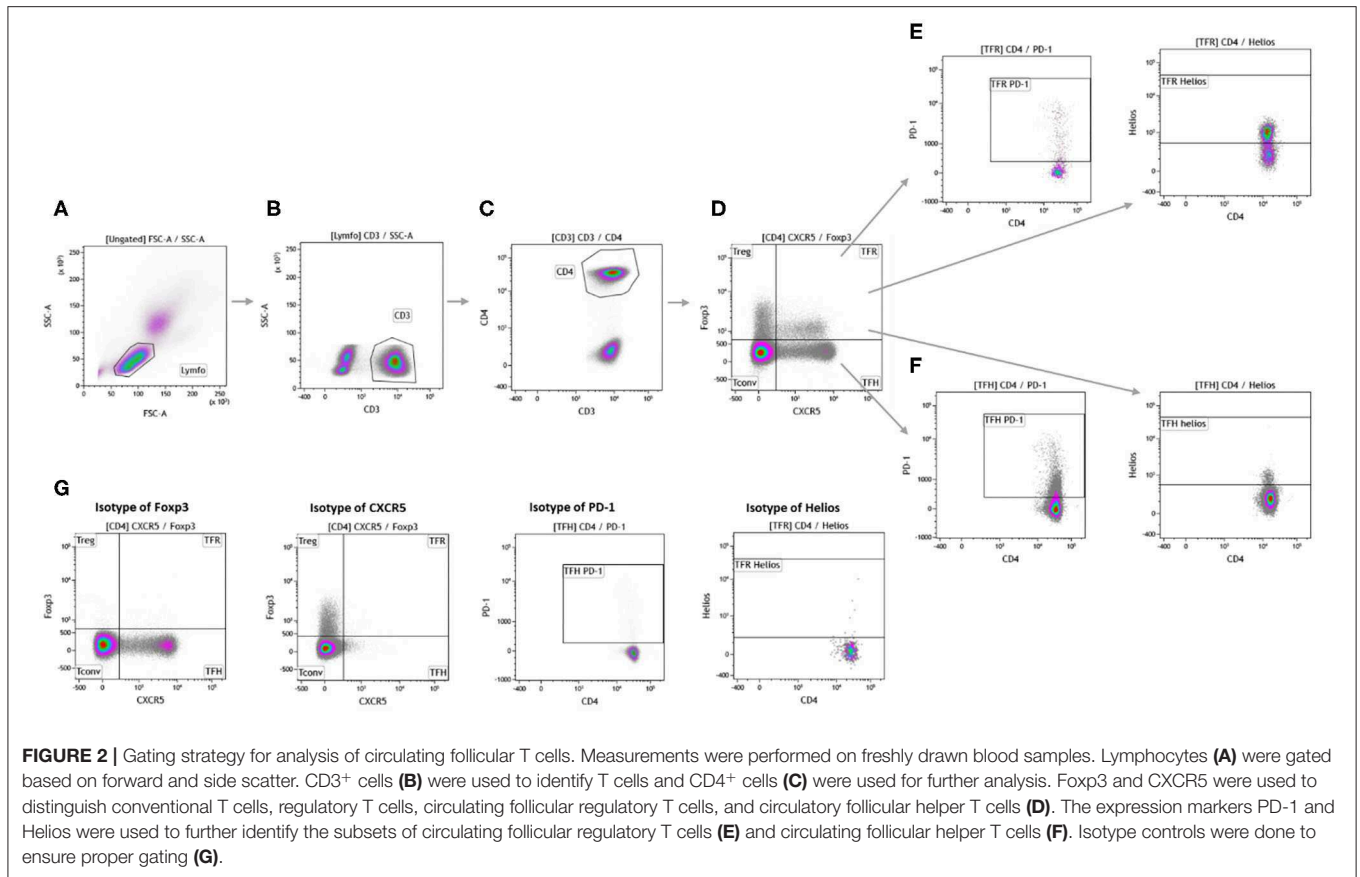


FIGURE 1 | Overview of the kidney transplant recipients with a biopsy-proven rejection before blood sampling and the type of anti-rejection therapy administered. BPR, biopsy-proven rejection; ART, anti-rejection therapy; MP, methylprednisolone; IVIg, intravenous immunoglobulin; Alem, alemtuzumab.



An overview describing the number of patients who developed a rejection and received anti-rejection therapy is given in **Figure 1**.

The Effect of Tacrolimus-Based Immunosuppression on cTfr and cTfh Cell Numbers in Kidney Transplant Recipients

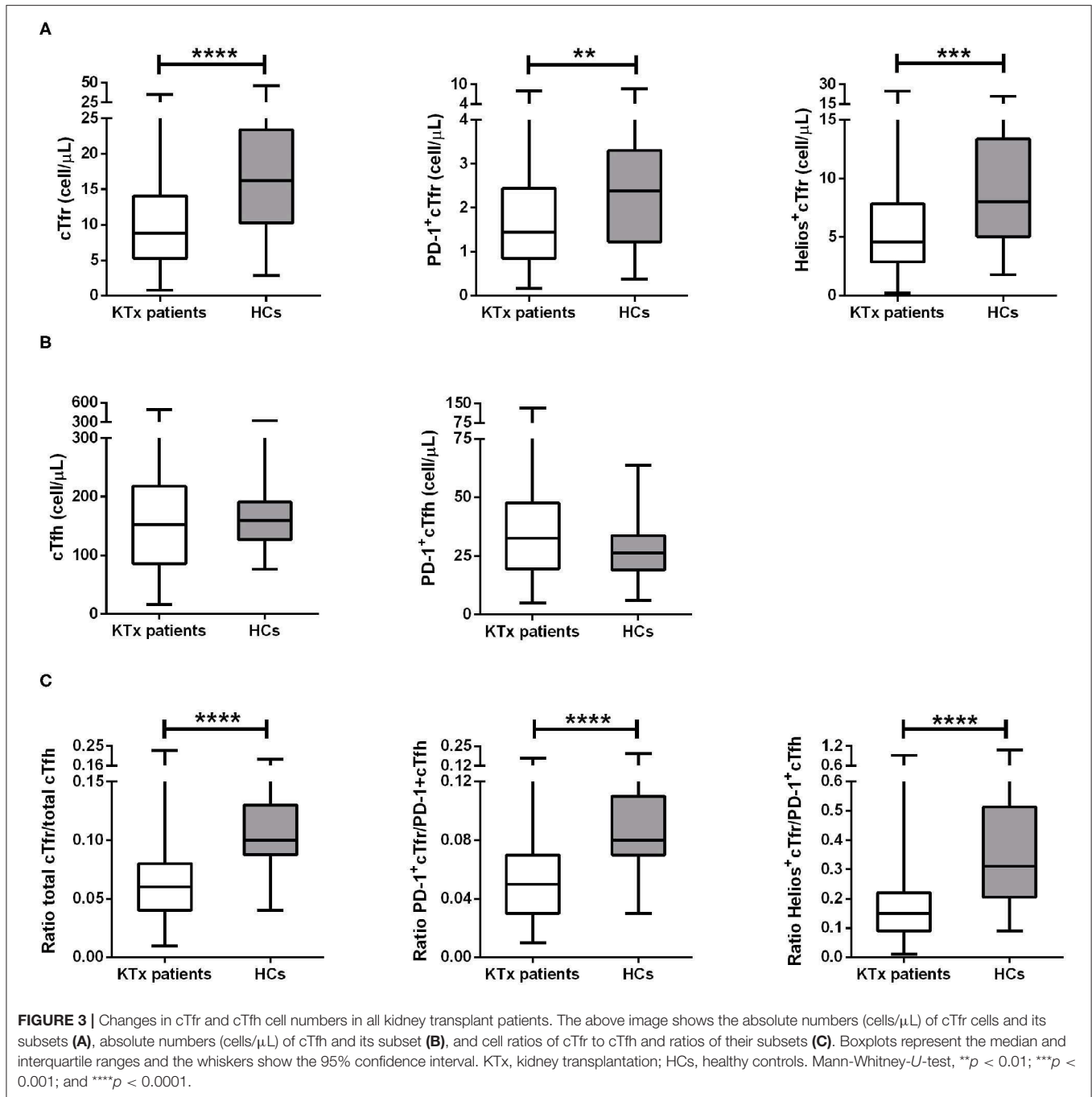
We studied the differences in absolute cell numbers of Tfr and Tfh cells and their PD-1 and Helios expression between kidney transplant recipients and HCs. The gating strategy is shown in **Figure 2**. The numbers of both total cTfr (CD3⁺CD4⁺CXCR5⁺FoxP3⁺), PD-1⁺cTfr (CD3⁺CD4⁺CXCR5⁺FoxP3⁺PD-1⁺), and Helios⁺cTfr (CD3⁺CD4⁺CXCR5⁺FoxP3⁺Helios⁺) cells were significantly lower in patients when compared to healthy controls (**Figure 3A**), while the numbers of both total cTfh (CD3⁺CD4⁺CXCR5⁺FoxP3⁻) and PD-1⁺cTfh (CD3⁺CD4⁺CXCR5⁺FoxP3⁻PD-1⁺) in patients and controls were not significantly different (**Figure 3B**). The decreased cTfr numbers resulted in significantly lower cTfr/cTfh, PD-1⁺cTfr/PD-1⁺cTfh and Helios⁺cTfr/PD-1⁺cTfh ratios in patients (**Figure 3C**). Finally, we examined whether the cTfh and cTfr populations were associated with kidney graft function. We found that the number of total cTfr cells, and ratio of cTfr to cTfh were both positively correlated with eGFR (**Figure S1**). All other cell types showed no significant correlation with kidney graft function.

Numbers of cTfr and cTfh in Patients With Anti-HLA Antibodies and Donor-Specific Antibodies

In this study, anti-HLA antibodies were measured for all patients at the time of blood sampling. Out of 211 patients, 34 (16.1%) patients had detectable anti-HLA antibodies, of which 11 (5.2%) were DSA positive. The association between the numbers of cTfr and cTfh cells with the presence of anti-HLA antibodies or DSA was analyzed. No significant differences were observed between absolute numbers of cTfr, cTfh, and cell ratios (**Figure 4**) in patients with anti-HLA antibodies or DSA at the time of blood sampling.

cTfr and cTfh in Patients With a History of Rejection and the Effect of Anti-rejection Therapy on Their Cell Numbers

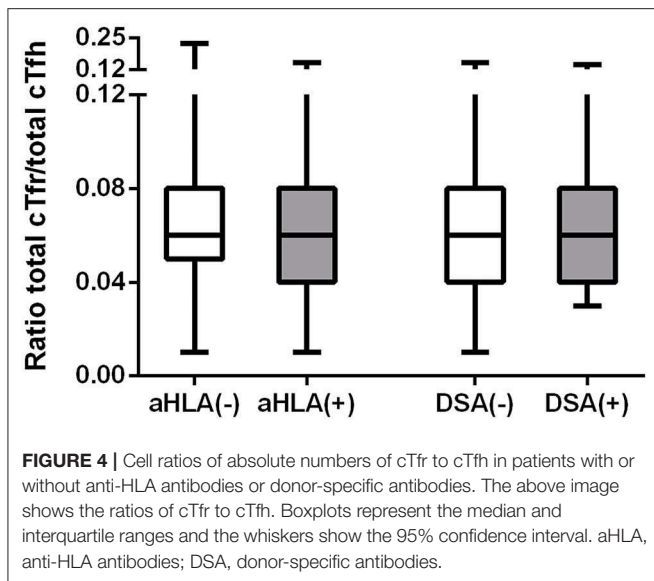
To define whether alloreactivity and subsequent anti-rejection therapy affect cTfr and cTfh cell numbers, we first grouped the samples according to the rejection history and later according to the type of anti-rejection therapy (**Figure 1**). The 211 patients were divided into a group with a history of rejection ($n = 5$ presumed, treated rejection, and $n = 44$ BPR) and a group with no previous rejection ($n = 162$). Compared to patients without rejection, patients with a history of rejection had 43.9, 39.4, and 39% lower numbers of cTfr, PD-1⁺cTfr, and Helios⁺cTfr cells,



respectively. Furthermore, in the rejection patients cTfh and PD-1⁺cTfh cell numbers were 42.8 and 39.2% lower, respectively. Due to the significant decrease of both cTfr and cTfh, all cell ratios in patients with or without a history of rejection were comparable (Figure 5A). Additionally, we examined whether there were any significant differences in absolute cell numbers between patients with different types of BPR. Patients with rejection were categorized into three subgroups according to their latest biopsy results: TCMR ($n = 29$), ABMR ($n = 15$), mixed TCMR and ABMR ($n = 5$). We found no significant differences in cTfr and

cTfh absolute cell numbers between patients with different types of rejection (Figure S2).

Patients with a history of rejection received anti-rejection therapy at a median time of 4.9 years before blood sampling. Since there could be a difference in the effects of the various anti-rejection treatments on follicular cell numbers, patients were grouped accordingly. Patients were treated with high-dose pulse intravenous methylprednisolone only, high-dose pulse intravenous methylprednisolone with intravenous immunoglobulin or high-dose pulse intravenous



methylprednisolone with alemtuzumab at a median time of 5.1 (range: 2.1–7.1), 2.5 (0.4–6.5), and 5.0 (2.5–6.1) years before blood sampling, respectively. **Table 2** provides an overview of the cohort of 49 patients who received anti-rejection therapy before blood sampling. As expected, alemtuzumab treatment had the strongest effect, and it was the only anti-rejection treatment associated with significantly lower numbers of both cTfr and cTfh cells, including their subsets. When compared to patients who had not been treated with anti-rejection therapy, the median absolute numbers of total cTfr in patients treated with previous pulse methylprednisolone decreased by 30.6%, pulse methylprednisolone + IVIg led to 51.2% decrease and pulse methylprednisolone + alemtuzumab led to 85.8% decrease. Absolute numbers of total cTfr, PD-1⁺cTfr, and Helios⁺cTfr in patients who had received pulse methylprednisolone + alemtuzumab were significantly lower than cell numbers of patients who had received no anti-rejection treatment (**Figure 5B**). Treatment with other anti-rejection therapies did not result in a significant measurable decrease of total cTfr or activated cTfr absolute numbers compared to no anti-rejection treatment.

Similarly, absolute numbers of total cTfh in patients treated with previous pulse methylprednisolone decreased by 42.7%, pulse methylprednisolone + IVIg resulted in 32.6% decrease and pulse methylprednisolone + alemtuzumab resulted in 66.8% decrease compared to total cTfh numbers in patients who had not been treated with anti-rejection therapy. This decrease in absolute numbers of total cTfh was only significant for patients treated with pulse methylprednisolone + alemtuzumab, while PD-1⁺cTfh were not significantly lower compared to patients who did not receive anti-rejection therapy (**Figure 5C**). The ratio of total cTfr to cTfh and Helios⁺cTfr to PD-1⁺Tfh were also significantly lower in patients who received pulse methylprednisolone + alemtuzumab anti-rejection therapy (**Figure 5D**). We found

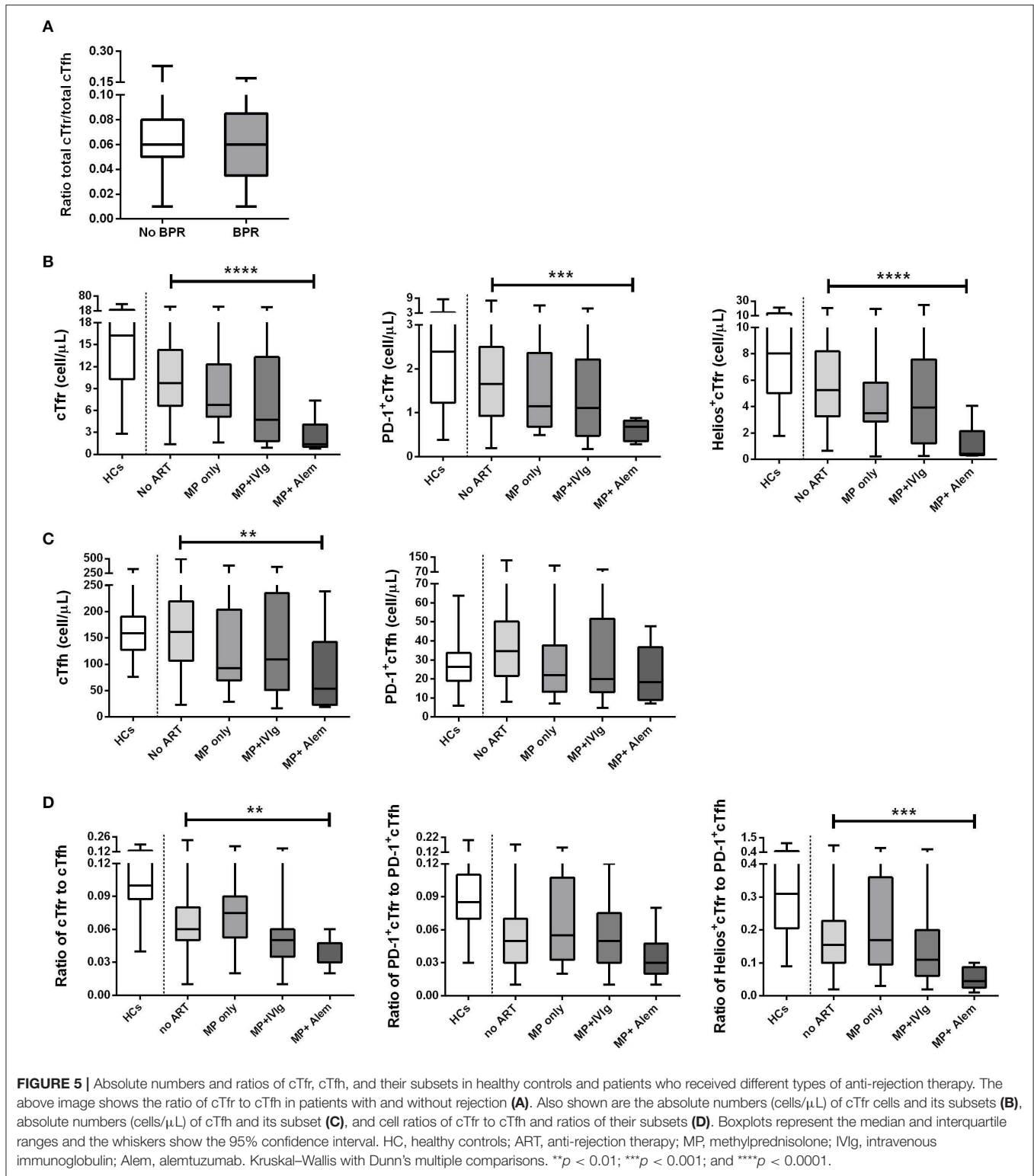
a similar decrease in CD3⁺, CD4⁺, and T conventional cells in patients treated with pulse methylprednisolone + alemtuzumab anti-rejection therapy. Interestingly, Treg cell numbers were not significantly lower in patients who received pulse methylprednisolone + alemtuzumab anti-rejection therapy (**Figure S3**).

DISCUSSION

In the present study, we investigated whether immunosuppression affects the absolute numbers of cTfr and cTfh cells and the balance between cTfr to cTfh cells in kidney transplant recipients. We found that tacrolimus-based maintenance immunosuppression results in decreased absolute numbers of cTfr cells, without affecting cTfh cells when compared to healthy individuals. Other studies in renal transplant recipients, demonstrated increased cTfh cell numbers before the development of DSA, in association with ABMR or with the development of anti-HLA antibodies (43–45). Moreover, decreased numbers of Tfr cells were observed in both kidney transplant tissue and peripheral blood of patients with ABMR (32). The majority of patients in our cohort were on a combined maintenance treatment with tacrolimus and MMF. MMF is a known inhibitor of lymphocyte proliferation (46) and calcineurin inhibitors have an adverse effect on the differentiation and function of regulatory T cells (47–49). Circulating Tfr cells are primarily derived from Tregs (50) so it stands to reason that if Treg differentiation is inhibited then this may also have a direct effect on cTfr cell numbers.

We also found that patients with anti-HLA antibodies or DSA at 5–7 years post-transplant had similar cTfr and cTfh cell numbers as patients without antibodies. This is somewhat unexpected as other studies have shown elevated numbers of cTfh in patients with anti-HLA antibodies or DSA (45, 51). In this study, 13 of the 34 patients with anti-HLA antibodies had a history of rejection and anti-rejection therapy. This suggests that the immunosuppression regimen and/or anti-rejection therapy administered to our patients is able to prevent the expansion of cTfh cells which are commonly associated with the presence of anti-HLA antibodies. However, it may not be sufficient to completely suppress previously formed Tfh and memory B cells from developing anti-HLA antibodies.

As demonstrated in this study, treatment with alemtuzumab led to significantly lower numbers of total and subsets of cTfr and total cTfh cells. After administration of alemtuzumab, T cells repopulation occurs through the clonal expansion of T cells as opposed to repopulation through thymopoiesis, in a process known as homeostatic proliferation (52–54). Our findings suggest that the homeostatic proliferation of cTfr cells is impaired after treatment with alemtuzumab. This is in line with the findings of Macedo et al., who showed that Tregs are significantly decreased compared to HCs several years after alemtuzumab induction (55). Moreover, the resulting shift in balance between Tfr to Tfh cells after treatment with alemtuzumab may result



in increased formation of memory B cells and plasma blasts thereby increasing the risk for development of ABMR. Clinical studies have reported that alemtuzumab induction therapy, is associated with a higher incidence of chronic ABMR in kidney

transplant recipients (56, 57). It is unclear whether alemtuzumab therapy has an effect on follicular T cells and B cells which reside in SLOs. If these cells remain present in SLOs, T and B cell cross-talk can still result in the formation of memory B cells

TABLE 2 | Characteristics of the 49 kidney transplant recipients who received anti-rejection therapy.

	Anti-rejection therapy		
	MP only (n = 24)	MP + IVIg (n = 17)	MP + alemtuzumab (n = 8)
Patients with rejection (n = 49)			
Rejection episodes, n (%)			
One episode (n = 32)	20 (40.8)	8 (8.9)	4 (8.1)
Two episodes (n = 14)	4 (8.1)	6 (12.2)	4 (8.1)
Three episodes (n = 3)	0	3 (6.1)	0
Rejection type, n (%)			
TCMR (n = 29)	20 (40.8)	4 (8.1)	5 (10.2)
ABMR (n = 15)	3 (6.1)	10 (20.4)	2 (4.1)
Mixed TCMR and ABMR (n = 5)	1 (2.0)	3 (6.1)	1 (2.0)

KTx, kidney transplantation; ART, anti-rejection therapy; MP, methylprednisolone; IVIg, intravenous immunoglobulin; TCMR, T cell-mediated rejection; ABMR, antibody-mediated rejection.

and antibody-producing B cells. It is also interesting to note that despite successful treatment of rejection, the patients in our cohort have a higher incidence of anti-HLA antibodies and DSA up to 5 years after treatment with anti-rejection therapy.

Nonetheless, the results presented in this study should be interpreted in light of the study limitations. The patient cohort described here is heterogeneous and includes patients treated with different modalities of anti-rejection therapy and differences in the timing of treatment. While this heterogeneity is representative of daily clinical practice, it provides a challenge when interpreting our results. Another limitation is the fact that cell counts prior to treatment with anti-rejection therapy are not available. Ideally, serial measurements both before and after treatment with said therapies would provide interesting data. As comparisons with pre-treatment samples are not possible to conclude with certainty whether cTfh cell numbers are less affected by anti-rejection therapy or whether there is a faster repopulation of this subset compared to that of cTfr cells. And finally, the challenges in acquiring sufficient numbers of follicular T cells in transplant recipients results in a lack of assays to describe the functionality of these cells after treatment with maintenance and anti-rejection therapy. The use of a mouse animal model might be valuable method to study the mechanisms of follicular T cells *in vivo*. Moreover, by using a mouse monoclonal antibody against the CD52 molecule it would also be possible to study the effect of alemtuzumab on follicular T cells and B cells present both in the circulation and in SLOs.

In conclusion, compared to healthy controls, numbers of cTfr cells in peripheral blood of kidney transplant recipients on tacrolimus-based therapy are significantly lower up to 7 years after transplantation. Furthermore, previous treatment with alemtuzumab has a significant and long-lasting effect on the numbers of these cells.

DATA AVAILABILITY STATEMENT

The raw data supporting the conclusions of this article will be made available by the authors, without undue reservation.

ETHICS STATEMENT

The studies involving human participants were reviewed and approved by METC Erasmus Medisch Centrum Rotterdam. The patients/participants provided their written informed consent to participate in this study.

AUTHOR CONTRIBUTIONS

QN, AM, CB, NB, TG, and DH: conceptualization. MD and CB: methodology. MD, QN, and AM: investigation. QN and AM: formal analysis. QN, AM, and CB: writing-original draft. LW, NB, TG, and DH: editing. NB and CB: supervision. MD and NB: project administration. All authors contributed to the article and approved the submitted version.

FUNDING

This work was supported by the Erasmus MC (mRACE grant 2016) and the National Natural Science Foundation of China (Grant Nos. 81501816, 81871713, and 81571561).

ACKNOWLEDGMENTS

We are grateful for the contributions of our lab members.

SUPPLEMENTARY MATERIAL

The Supplementary Material for this article can be found online at: <https://www.frontiersin.org/articles/10.3389/fimmu.2020.01972/full#supplementary-material>

Figure S1 | Correlations of cTfr absolute cell numbers (A), cTfh absolute cell numbers (B), and ratio of cTfr to Tfh (C) with kidney function. Spearman's correlation.

Figure S2 | Absolute numbers and cell ratios of cTfr, cTfh, and their activated subset by type of rejection. Shown are the absolute numbers (cells/ μ L) of cTfr cells and its subsets (A), absolute numbers (cells/ μ L) of cTfh and its subset (B), and cell ratios of cTfr to cTfh and ratios of their subsets (C). Boxplots represent the median and interquartile ranges and the whiskers show the 95% confidence interval. TCMR, T cell-mediated rejection; ABMR, antibody-mediated rejection; Mixed, mixed TCMR and ABMR. Kruskal–Wallis test.

Figure S3 | Absolute numbers of CD3, CD4, T conventional cells and Treg cells in healthy controls and patients who received different types of anti-rejection therapy. The above image shows the absolute numbers (cells/ μ L) of CD3 cells (A), CD4 cells (B), T conventional cells (C), and Treg cells (D). Boxplots represent the median and interquartile ranges and the whiskers show the 95% confidence interval. HC, healthy controls; ART, anti-rejection therapy; MP, methylprednisolone; IVIg, intravenous immunoglobulin; Alem, alemtuzumab. Kruskal–Wallis with Dunn's multiple comparisons. * $p < 0.05$ and ** $p < 0.01$.

REFERENCES

- Meier-Kriesche HU, Schold JD, Srinivas TR, Kaplan B. Lack of improvement in renal allograft survival despite a marked decrease in acute rejection rates over the most recent era. *Am J Transplant.* (2004) 4:378–83. doi: 10.1111/j.1600-6143.2004.00332.x
- Gaston RS, Fieberg A, Hunsicker L, Kasiske BL, Leduc R, Cosio FG, et al. Late graft failure after kidney transplantation as the consequence of late versus early events. *Am J Transplant.* (2018) 18:1158–67. doi: 10.1111/ajt.14590
- Stegall MD, Gaston RS, Cosio FG, Matas A. Through a glass darkly: seeking clarity in preventing late kidney transplant failure. *J Am Soc Nephrol.* (2015) 26:20–9. doi: 10.1681/ASN.2014040378
- Wekerle T, Segev D, Lechler R, Oberbauer R. Strategies for long-term preservation of kidney graft function. *Lancet.* (2017) 389:2152–62. doi: 10.1016/S0140-6736(17)31283-7
- Neuberger JM, Bechstein WO, Kuypers DR, Burra P, Citterio F, De Geest S, et al. Practical recommendations for long-term management of modifiable risks in kidney and liver transplant recipients: a guidance report and clinical checklist by the Consensus on Managing Modifiable Risk in Transplantation (COMMIT) group. *Transplantation.* (2017) 101(4S Suppl. 2):S1–56. doi: 10.1097/TP.0000000000001651
- Lamb KE, Lodhi S, Meier-Kriesche HU. Long-term renal allograft survival in the United States: a critical reappraisal. *Am J Transplant.* (2011) 11:450–62. doi: 10.1111/j.1600-6143.2010.03283.x
- Keith DS, Vranic G, Nishio-Lucar A. Graft function and intermediate-term outcomes of kidney transplants improved in the last decade: analysis of the United States kidney transplant database. *Transplant Direct.* (2017) 3:e166. doi: 10.1097/TXD.0000000000000654
- Coemans M, Susal C, Dohler B, Anglicheau D, Giral M, Bestard O, et al. Analyses of the short- and long-term graft survival after kidney transplantation in Europe between 1986 and 2015. *Kidney Int.* (2018) 94:964–73. doi: 10.1016/j.kint.2018.05.018
- Cippà PE, Liu J, Sun B, Kumar S, Naesens M, McMahon AP. A late B lymphocyte action in dysfunctional tissue repair following kidney injury and transplantation. *Nat Commun.* (2019) 10:1157. doi: 10.1038/s41467-019-09092-2
- Gaston RS, Cecka JM, Kasiske BL, Fieberg AM, Leduc R, Cosio FC, et al. Evidence for antibody-mediated injury as a major determinant of late kidney allograft failure. *Transplantation.* (2010) 90:68–74. doi: 10.1097/TP.0b013e3181e065de
- Bouatou Y, Viglietti D, Pievani D, Louis K, Duong Van Huyen J-P, Rabant M, et al. Response to treatment and long-term outcomes in kidney transplant recipients with acute T cell-mediated rejection. *Am J Transpl.* (2019) 19:1972–88. doi: 10.1111/ajt.15299
- Eskandary F, Regele H, Baumann L, Bond G, Kozakowski N, Wahrmann M, et al. A randomized trial of bortezomib in late antibody-mediated kidney transplant rejection. *J Am Soc Nephrol JASN.* (2018) 29:591–605. doi: 10.1681/ASN.2017070818
- Budde K, Dürr M. Any progress in the treatment of antibody-mediated rejection? *J Am Soc Nephrol JASN.* (2018) 29:350–2. doi: 10.1681/ASN.2017121296
- Loupy A, Lefaucheur C. Antibody-mediated rejection of solid-organ allografts. *N Engl J Med.* (2018) 379:1150–60. doi: 10.1056/NEJMr1802677
- McHeyzer-Williams LJ, Pelletier N, Mark L, Fazilleau N, McHeyzer-Williams MG. Follicular helper T cells as cognate regulators of B cell immunity. *Curr Opin Immunol.* (2009) 21:266–73. doi: 10.1016/j.coi.2009.05.010
- Morita R, Schmitt N, Bentebibel SE, Ranganathan R, Bourdery L, Zurawski G, et al. Human blood CXCR5(+)CD4(+) T cells are counterparts of T follicular cells and contain specific subsets that differentially support antibody secretion. *Immunity.* (2011) 34:108–21. doi: 10.1016/j.immuni.2010.12.012
- Shulman Z, Gitlin AD, Weinstein JS, Lainez B, Esplugues E, Flavell RA, et al. Dynamic signaling by T follicular helper cells during germinal center B cell selection. *Science.* (2014) 345:1058–62. doi: 10.1126/science.1257861
- Fazilleau N, Mark L, McHeyzer-Williams LJ, McHeyzer-Williams MG. Follicular helper T cells: lineage and location. *Immunity.* (2009) 30:324–35. doi: 10.1016/j.immuni.2009.03.003
- van Besouw NM, Mendoza Rojas A, Baan CC. The role of follicular T helper cells in the humoral alloimmune response after clinical organ transplantation. *HLA.* (2019) 94:407–14. doi: 10.1111/tan.13671
- Wing JB, Tekguc M, Sakaguchi S. Control of germinal center responses by T-follicular regulatory cells. *Front Immunol.* (2018) 9:1910. doi: 10.3389/fimmu.2018.01910
- Sage PT, Sharpe AH. T follicular regulatory cells in the regulation of B cell responses. *Trends Immunol.* (2015) 36:410–8. doi: 10.1016/j.it.2015.05.005
- Wang CJ, Heuts F, Ovcinnikovs V, Wardzinski L, Bowers C, Schmidt EM, et al. CTLA-4 controls follicular helper T-cell differentiation by regulating the strength of CD28 engagement. *Proc Natl Acad Sci USA.* (2015) 112:524–9. doi: 10.1073/pnas.1414576112
- Miles B, Connick E. Control of the germinal center by follicular regulatory T cells during infection. *Front Immunol.* (2018) 9:2704. doi: 10.3389/fimmu.2018.02704
- Sage PT, Francisco LM, Carman CV, Sharpe AH. The receptor PD-1 controls follicular regulatory T cells in the lymph nodes and blood. *Nat Immunol.* (2013) 14:152–61. doi: 10.1038/ni.2496
- Chung Y, Tanaka S, Chu F, Nurieva RI, Martinez GJ, Rawal S, et al. Follicular regulatory T cells expressing Foxp3 and Bcl-6 suppress germinal center reactions. *Nat Med.* (2011) 17:983–8. doi: 10.1038/nm.2426
- Ma CS, Deenick EK, Batten M, Tangye SG. The origins, function, and regulation of T follicular helper cells. *J Exp Med.* (2012) 209:1241–53. doi: 10.1084/jem.20120994
- Linterman MA, Pierson W, Lee SK, Kallies A, Kawamoto S, Rayner TF, et al. Foxp3+ follicular regulatory T cells control the germinal center response. *Nat Med.* (2011) 17:975–82. doi: 10.1038/nm.2425
- Xu B, Wang S, Zhou M, Huang Y, Fu R, Guo C, et al. The ratio of circulating follicular T helper cell to follicular T regulatory cell is correlated with disease activity in systemic lupus erythematosus. *Clin Immunol.* (2017) 183:46–53. doi: 10.1016/j.clim.2017.07.004
- Niu Q, Huang Z-C, Wu X-J, Jin Y-X, An Y-F, Li Y-M, et al. Enhanced IL-6/phosphorylated STAT3 signaling is related to the imbalance of circulating T follicular helper/T follicular regulatory cells in patients with rheumatoid arthritis. *Arthr Res Ther.* (2018) 20:200. doi: 10.1186/s13075-018-1690-0
- Zhao S, Ding J, Wang S, Li C, Guo P, Zhang M, et al. Decreased expression of circulating Aire and increased Tfh/Tfr cells in myasthenia gravis patients. *Biosci Rep.* (2018) 38:BSR20180096. doi: 10.1042/BSR20180096
- Yan L, Li Y, Li Y, Wu X, Wang X, Wang L, et al. Increased circulating Tfh to Tfr ratio in chronic renal allograft dysfunction: a pilot study. *BMC Immunol.* (2019) 20:26. doi: 10.1186/s12865-019-0308-x
- Chen W, Bai J, Huang H, Bi L, Kong X, Gao Y, et al. Low proportion of follicular regulatory T cell in renal transplant patients with chronic antibody-mediated rejection. *Sci Rep.* (2017) 7:1322. doi: 10.1038/s41598-017-01625-3
- de Graaf GN, Dieterich M, Hesselink DA, Boer K, Clahsen-van Groningen MC, Kraaijeveld R, et al. Follicular T helper cells and humoral reactivity in kidney transplant patients. *Clin Exp Immunol.* (2015) 180:329–40. doi: 10.1111/cei.12576
- de Leur K, Clahsen-van Groningen MC, van den Bosch TPP, de Graaf GN, Hesselink DA, Samsom JN, et al. Characterization of ectopic lymphoid structures in different types of acute renal allograft rejection. *Clin Exp Immunol.* (2018) 192:224–32. doi: 10.1111/cei.13099
- de Leur K, Dor FJ, Dieterich M, van der Laan LJ, Hendriks RW, Baan CC. IL-21 receptor antagonist inhibits differentiation of B cells toward plasmablasts upon alloantigen stimulation. *Front Immunol.* (2017) 8:306. doi: 10.3389/fimmu.2017.00306
- Conlon TM, Saeb-Parsy K, Cole JL, Motallebzadeh R, Qureshi MS, Rehakova S, et al. Germinal center alloantibody responses are mediated exclusively by indirect-pathway CD4 T follicular helper cells. *J Immunol.* (2012) 188:2643–52. doi: 10.4049/jimmunol.1102830
- Alsughayyir J, Chhabra M, Qureshi MS, Mallik M, Ali JM, Gamper I, et al. Relative frequencies of alloantigen-specific helper CD4 T cells and B cells determine mode of antibody-mediated allograft rejection. *Front Immunol.* (2018) 9:3039. doi: 10.3389/fimmu.2018.03039
- Wallin EF, Hill DL, Linterman MA, Wood KJ. The calcineurin inhibitor tacrolimus specifically suppresses human T follicular helper cells. *Front Immunol.* (2018) 9:1184. doi: 10.3389/fimmu.2018.01184

39. Loupy A, Haas M, Solez K, Racusen L, Glotz D, Seron D, et al. The Banff 2015 kidney meeting report: current challenges in rejection classification and prospects for adopting molecular pathology. *Am J Transplant.* (2017) 17:28–41. doi: 10.1111/ajt.14107
40. van den Hoogen MWF, Hesselink DA, van Son WJ, Weimar W, Hilbrands LB. Treatment of steroid-resistant acute renal allograft rejection with alemtuzumab. *Am J Transpl.* (2013) 13:192–6. doi: 10.1111/j.1600-6143.2012.04328.x
41. Sablik KA, Clahsen-van Groningen MC, Looman CWN, Damman J, van Agteren M, Betjes MGH. Treatment with intravenous immunoglobulins and methylprednisolone may significantly decrease loss of renal function in chronic-active antibody-mediated rejection. *BMC Nephrology.* (2019) 20:218. doi: 10.1186/s12882-019-1385-z
42. van Besouw NM, Yan L, de Kuiper R, Klepper M, Reijkerk D, Dieterich M, et al. The number of donor-specific IL-21 producing cells before and after transplantation predicts kidney graft rejection. *Front Immunol.* (2019) 10:748. doi: 10.3389/fimmu.2019.00748
43. Chenouard A, Chesneau M, Bui Nguyen L, Le Bot S, Cadoux M, Dugast E, et al. Renal operational tolerance is associated with a defect of blood Tfh cells that exhibit impaired b cell help. *Am J Transplant.* (2017) 17:1490–501. doi: 10.1111/ajt.14142
44. Shi J, Luo F, Shi Q, Xu X, He X, Xia Y. Increased circulating follicular helper T cells with decreased programmed death-1 in chronic renal allograft rejection. *BMC Nephrol.* (2015) 16:182. doi: 10.1186/s12882-015-0172-8
45. Cano-Romero FL, Laguna Goya R, Utrero-Rico A, Gomez-Massa E, Arroyo-Sanchez D, Suarez-Fernandez P, et al. Longitudinal profile of circulating T follicular helper lymphocytes parallels anti-HLA sensitization in renal transplant recipients. *Am J Transplant.* (2019) 19:89–97. doi: 10.1111/ajt.14987
46. Allison AC, Eugui EM. Mycophenolate mofetil and its mechanisms of action. *Immunopharmacology.* (2000) 47:85–118. doi: 10.1016/S0162-3109(00)00188-0
47. Zeiser R, Nguyen VH, Beilhack A, Buess M, Schulz S, Baker J, et al. Inhibition of CD4+CD25+ regulatory T-cell function by calcineurin-dependent interleukin-2 production. *Blood.* (2006) 108:390–9. doi: 10.1182/blood-2006-01-0329
48. Segundo DS, Ruiz JC, Izquierdo M, Fernandez-Fresnedo G, Gomez-Alamillo C, Merino R, et al. Calcineurin inhibitors, but not rapamycin, reduce percentages of CD4+CD25+FOXP3+ regulatory T cells in renal transplant recipients. *Transplantation.* (2006) 82:550–7. doi: 10.1097/01.tp.0000229473.95202.50
49. Demirkiran A, Hendriks TK, Baan CC, van der Laan LJ. Impact of immunosuppressive drugs on CD4+CD25+FOXP3+ regulatory T cells: does in vitro evidence translate to the clinical setting? *Transplantation.* (2008) 85:783–9. doi: 10.1097/TP.0b013e318166910b
50. Niu Q, Kraaijeveld R, Li Y, Mendoza Rojas A, Shi Y, Wang L, et al. An overview of T follicular cells in transplantation: spotlight on their clinical significance. *Expert Rev Clin Immunol.* (2019) 15:1249–62. doi: 10.1080/1744666X.2020.1693262
51. Macedo C, Hadi K, Walters J, Elinoff B, Marrari M, Zeevi A, et al. Impact of induction therapy on circulating t follicular helper cells and subsequent donor-specific antibody formation after kidney transplant. *Kidney Int Rep.* (2019) 4:455–69. doi: 10.1016/j.ekir.2018.11.020
52. Bouvy AP, Klepper M, Betjes MG, Weimar W, Hesselink DA, Baan CC. Alemtuzumab as antirejection therapy: T cell repopulation and cytokine responsiveness. *Transplant Direct.* (2016) 2:e83. doi: 10.1097/TXD.0000000000000595
53. Zwan M, Baan C, van Gelder T, Hesselink D. Review of the clinical pharmacokinetics and pharmacodynamics of alemtuzumab and its use in kidney transplantation. *Clin Pharmacokinet.* (2017) 57:191–207. doi: 10.1007/s40262-017-0573-x
54. Rosado-Sanchez I, Gonzalez-Magana A, Pozo-Balado MM, Herrero-Fernandez I, Polaino MJ, Rodriguez-Mendez MM, et al. An *in vitro* system of autologous lymphocytes culture that allows the study of homeostatic proliferation mechanisms in human naive CD4 T-cells. *Lab Invest.* (2018) 98:500–11. doi: 10.1038/s41374-017-0006-3
55. Macedo C, Walters JT, Orkis EA, Isse K, Elinoff BD, Fedorek SP, et al. Long-term effects of alemtuzumab on regulatory and memory T-cell subsets in kidney transplantation. *Transplantation.* (2012) 93:813–21. doi: 10.1097/TP.0b013e318247a717
56. LaMattina JC, Mezrich JD, Hofmann RM, Foley DP, D'Alessandro AM, Sollinger HW, et al. Alemtuzumab as compared to alternative contemporary induction regimens. *Transpl Int.* (2012) 25:518–26. doi: 10.1111/j.1432-2277.2012.01448.x
57. Noureldeen T, Albekioni Z, Machado L, Muddana N, Marcus RJ, Hussain SM, et al. Alemtuzumab induction and antibody-mediated rejection in kidney transplantation. *Transplant Proc.* (2014) 46:3405–7. doi: 10.1016/j.transproceed.2014.08.037

Conflict of Interest: The authors declare that the research was conducted in the absence of any commercial or financial relationships that could be construed as a potential conflict of interest.

Copyright © 2020 Niu, Mendoza Rojas, Dieterich, Roelen, Clahsen-van Groningen, Wang, van Gelder, Hesselink, van Besouw and Baan. This is an open-access article distributed under the terms of the Creative Commons Attribution License (CC BY). The use, distribution or reproduction in other forums is permitted, provided the original author(s) and the copyright owner(s) are credited and that the original publication in this journal is cited, in accordance with accepted academic practice. No use, distribution or reproduction is permitted which does not comply with these terms.