



Universiteit
Leiden
The Netherlands

Refining individualized medicine in older patients with breast cancer

Boer, A.Z. de

Citation

Boer, A. Z. de. (2022, October 26). *Refining individualized medicine in older patients with breast cancer*. Retrieved from <https://hdl.handle.net/1887/3484239>

Version: Publisher's Version

License: [Licence agreement concerning inclusion of doctoral thesis in the Institutional Repository of the University of Leiden](#)

Downloaded from: <https://hdl.handle.net/1887/3484239>

Note: To cite this publication please use the final published version (if applicable).





3

Breast cancer mortality of older patients with and without recurrence analysed by multi-state models

Anna Z. de Boer
Esther Bastiaannet
Johannes Schetelig
Nienke A. de Glas
Damjan Manevski
Hein Putter
Gerrit Jan Liefers
Linda de Munck
Johanneke E.A. Portielje
Liesbeth C. de Wreede

European Journal of Cancer. 2022 Sep 1;174:212-220.

ABSTRACT

Introduction. In older patients with breast cancer, the risk of dying from other causes than breast cancer strongly increases after the age of 70. The aim of this study was to assess contributions of breast cancer mortality versus other-cause mortality after locoregional or distant recurrence in a population-based cohort of older patients analysed by multi-state models.

Methods. Surgically treated patients ≥ 70 years diagnosed with stage I-III breast cancer in 2003-2009 were selected from the Netherlands Cancer Registry. A novel multi-state model with locoregional and distant recurrence that incorporates relative survival was fitted. Other-cause and breast cancer mortality were indicated as population and excess mortality.

Results. Overall, 18,419 patients were included. Ten-year cumulative incidences of locoregional and distant recurrence were 2.8% (95%CI 2.6-3.1%) and 12.5% (95%CI 11.9-13.1%). Other-cause mortality increased from 23.9% (95%CI 23.7-24.2%) in patients 70-74 years to 73.8% (95%CI 72.2-75.4%) in those ≥ 80 years. Ten-year probabilities of locoregional or distant recurrence with subsequent breast cancer death were 0.4-1.3% and 10.2-14.6%, respectively. For patients with a distant recurrence in the first two years after diagnosis, breast cancer death probabilities were 95.3% (95%CI 94.2-96.4%), 93.1% (95%CI 91.6-94.6%), and 88.6% (95%CI 86.5-90.8%) in patients 70-74, 75-79, and ≥ 80 years.

Conclusion. In older patients without recurrence, prognosis is driven by other-cause mortality. Although locoregional recurrence is a predictor for worse outcome, given its low incidence it contributes little to breast cancer mortality after diagnosis. For patients who develop a distant recurrence, breast cancer remains the dominant cause of death, even at old age.

INTRODUCTION

The number of older patients with breast cancer will further increase in the upcoming years due to ageing of the population.¹ Despite having breast cancer, older patients often die from causes unrelated to breast cancer due to the shorter life expectancy and increasing comorbidity burden with age.²⁻⁵ Above the age of 70 years, the risk of dying from other causes strongly increases.^{6,7} It is therefore essential to consider this competing mortality risk while estimating prognosis in older patients^{6,8} However, the impact of competing mortality after breast cancer recurrence has not been extensively studied so far, because most studies treat recurrence as an endpoint of the study and do not investigate what happens after this endpoint. This is an omission since more insight in the age-dependent prognosis after recurrence can help inform treatment decisions.

Locoregional recurrence rates (LRR) have greatly diminished over the last two decades due to advances in treatment modalities and patient selection for treatments.⁹⁻¹¹ Recent data showed that 4% of all-aged patients diagnosed with stage II or stage III experiences a LRR.¹¹ Yet, LRR remains a predictor for worse overall and breast cancer survival in line with previous data, possibly because this may be associated with concurrent micrometastases.¹⁰⁻¹³ Prognosis after developing a distant recurrence (DR) is generally poor with a median time to death of 2.0 years.¹⁴ However, the time to death is highly variable from several months up to more than ten years, which also leaves room for improving outcome prediction by taking into account age-related mortality.¹⁴

To our knowledge, no previous study has investigated the proportion of breast cancer versus other-cause mortality after LRR and DR.^{15,16} We were capable of filling this gap thanks to our newly developed model in which we integrated relative survival techniques into a multi-state model, which enabled us to analyse observed events (recurrence and death) and unobserved events (cause of death) simultaneously. Therefore, the aim of this study was to assess all long-term outcomes in one integrated model and to compare them for different age groups. The study was performed in a nationwide population-based cohort of 18,419 older patients with stage I-III breast cancer with good quality long-term follow-up data.

METHODS

All surgically treated patients aged 70 years or older diagnosed with stage I-III breast cancer between 2003 and 2009 were selected from the Netherlands Cancer Registry (NCR) and included in this study. The NCR is a nationwide database on cancer diagnosis and treatment, hosted by the Netherlands Comprehensive Cancer Organization. The NCR receives

reports of diagnosed malignancies from the nationwide network and registry of histo- and cytopathology in the Netherlands (PALGA) which are confirmed and completed by the national hospital discharge databank. The interval 2003 to 2009 was chosen to allow sufficiently long follow-up.

Data managers from NCR collect data on diagnosis, staging and treatment from medical records using international coding rules. Breast cancer stage is defined according to the sixth edition of the TNM classification of malignant tumors.¹⁷ Clinical T or N stage was used when the pathological stage was unknown. Oestrogen receptor and progesterone receptor status were defined positive if $\geq 10\%$ of the tumour cells showed positive nuclear staining. The nationwide population-based cohort of patients diagnosed from 2003 to 2009 was used. The whole cohort was hypothetically separated in two consecutive cohorts based on follow-up time available due to logistic reasons. Cohort I comprised patients diagnosed from 2003 to 2006 for which follow-up was artificially censored at 5 years, and in case of a LRR a consecutive DR was not recorded. Cohort II comprised patients diagnosed from 2007 to 2009. For this cohort follow-up was not censored at a particular time, and a DR after a LRR was recorded. Vital status was available until 31 January 2017 through linkage of NCR data with the Municipal Personal Records database.

Study endpoints were breast cancer mortality and other-cause mortality from diagnosis, after LRR, and after DR by age group over time. Survival time was defined as the time from diagnosis or landmark until death, with censoring of patients still alive at last follow-up visit. Breast cancer mortality was defined as death due to breast cancer or possibly due to its treatment in patients without a recurrence, whereas other-cause mortality was mortality that the patients would also have experienced independent of their disease.

LRR was defined as breast cancer in the ipsilateral breast, ipsilateral thoracic wall or ipsilateral lymph nodes.¹⁸ If a patient presented with a LRR and DR at the same time, the patient was classified as having a DR given the impact on prognosis.

Statistical Analysis

Median follow-up duration was calculated using the reverse Kaplan-Meier method.¹⁹ Cumulative incidences of recurrence were calculated by using competing risks methodology,²⁰ to take into account that patients with certain “competing” events are no longer at risk for the primary event. Death was considered a competing event for both LRR and DR. In addition, DR was considered a competing event for LRR.

Breast cancer mortality and other-cause mortality after diagnosis, after LRR, and after DR were assessed with a multi-state model with LRR and DR as intermediate events.^{15,21} The

novelty of this multi-state model is that cause-specific mortality outcomes are estimated separately after diagnosis, LRR and DR, thus combining observed transitions (to recurrence and death) and unobserved transitions (population and excess death). Figure 1 shows the multi-state model. Statistical methods from the field of relative survival were used to split all mortality in population and excess mortality, since individual data on cause of death were not available. This method compares mortality in a study population to mortality in the general population matched by age, sex and year of diagnosis using country-specific life tables from the Human Mortality Database.²² The observed (or total) death hazard is then assumed to be the sum of the population hazard and the excess hazard. In this study, excess mortality is indicated as breast cancer-related mortality. The population mortality is referred to as other-cause mortality.

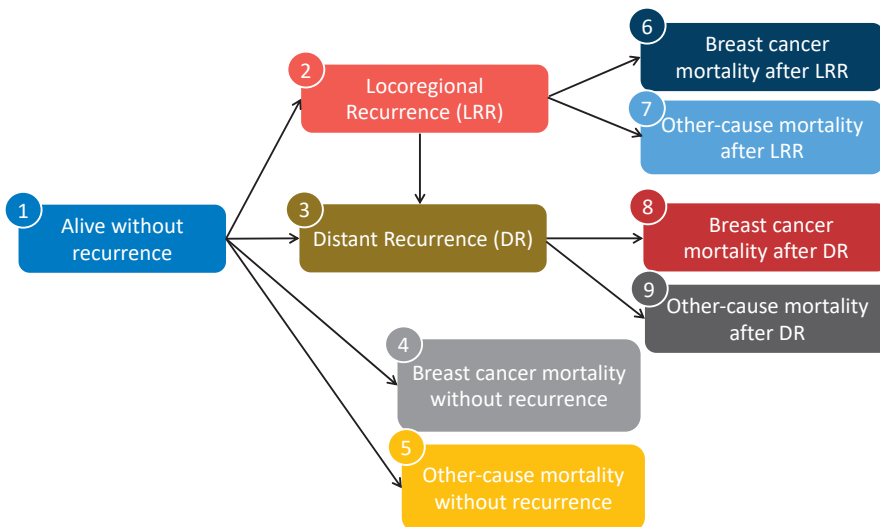


Figure 1. The multi-state relative survival model. All patients start in the state alive without recurrence (state 1). They can progress to locoregional recurrence (state 2), distant recurrence (state 3) or death (states 4 to 9). The model separates breast cancer mortality and other-cause mortality. Each arrow indicates the transition to the next state. Locoregional recurrence and distant recurrence are intermediate states between being alive without recurrence and death, which change the hazards for breast cancer and other-cause mortality, respectively. It cannot be discerned for individual patients if they die due to breast cancer or other-cause mortality. Techniques from relative survival are used to model this distinction, assuming that the hazard of other cause mortality is equal to that in the matched general population and that the remainder (observed minus population mortality) can be considered as breast cancer mortality, i.e., excess mortality due to the disease or possibly its treatment.

The relative survival technique can be used in patient populations in which the other-cause mortality risk is equal to that in the general population.^{23,24} This is a reasonable assumption for older patients with breast cancer. First, it has been demonstrated that patients with breast cancer have similar comorbidity compared to the general population.²⁵ Second, for women aged 65 years and older, there is no longer a disparity in breast cancer incidence by

socioeconomic status.²⁶ Third, since our cohort is population-based, there was no selection of healthier patients in the study.

Finally, analyses were performed using landmark models describing the outcomes of patients who were alive 2 years after diagnosis and had developed a LRR or DR before. To investigate the impact of the choice of the landmark, we performed several sensitivity analyses: different landmark times were chosen and analyses were performed in which LRR or DR was the starting point. The potential differential impact of early and late DR was investigated by separately analysing survival after early (first three years after diagnosis) and later recurrence.

All analyses were performed in R version 3.6.2 (<https://cran.r-project.org/>), packages 'survival', 'prodlim', 'relsurv' and 'mstate', extended with functions specifically written for this new model.^{20,21}

RESULTS

Patients

Between 2003 and 2009, 19,748 patients aged 70 years or older diagnosed with stage I-III breast cancer underwent surgery. Of these patients, 18,419 patients with available follow-up were included. Baseline characteristics are described in Table 1. At time of diagnosis, 7793 patients (42.3%) were aged 70-74 years, 4332 patients (23.5%) were aged 75-79 years, and 6294 patients (34.2%) were aged 80 years or older. Fifty-three percent received adjuvant endocrine therapy, and 1% was treated with adjuvant chemotherapy. Baseline characteristics per age group are described in the Supplementary Table 1.

Outcomes

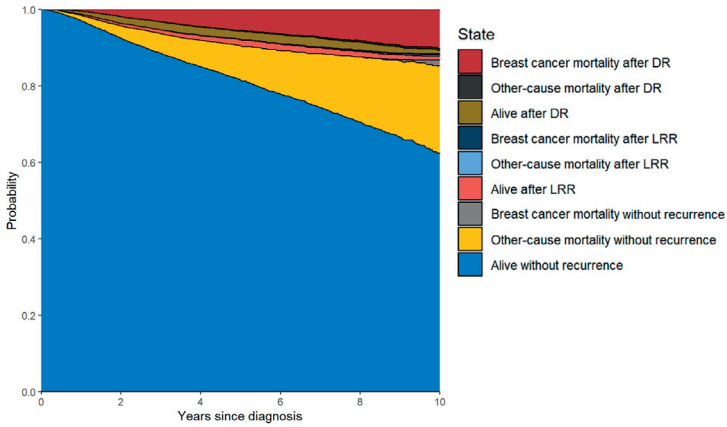
Of cohort I, 15 patients (0.1%) were lost to follow up before 5 years. In cohort II, median follow-up was 9.0 years (95% CI 9.0-9.1). The number of patients in follow-up is shown in Supplementary Figure 1. Outcomes stratified by age are shown in Figure 2, and corresponding 5 and 10-year mortality outcome probabilities in Table 2. Ten-year probabilities of DR with subsequent breast cancer death were 10.2% (95%CI 9.1-11.3%), 14.6% (95%CI 13.3-15.8%), and 10.9% (95%CI 9.9-11.8%) for patients aged 70-74 years, 75-79 years, and ≥ 80 years respectively. For all age groups, few LRR with subsequent breast cancer death were observed ($\leq 1.3\%$) or breast cancer mortality in patients without a recurrence ($\leq 1.9\%$).

Table 1. Patient, disease and treatment characteristics at diagnosis of the 18419 patients in the study.

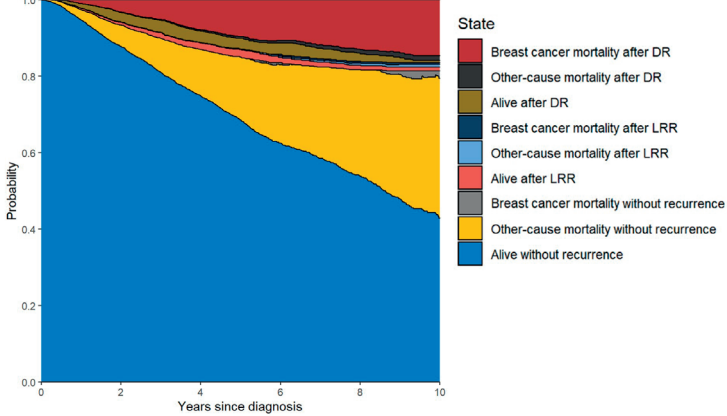
	N (%)
Age (years)	
70-74	7793 (42)
75-79	4332 (24)
≥80	6294 (34)
No. of comorbidities	
0	2205 (29)
1-2	4008 (53)
≥3	1296 (17)
Unknown	10910
Stage	
I	7752 (42)
II	8176 (44)
III	2463 (13)
Unknown	28
Histological grade	
1	4198 (24)
2	8390 (49)
3	4587 (27)
Unknown	1244
Hormone-receptor status	
ER and/or PR positive	15053 (86)
ER and PR negative	2446 (14)
Unknown	920
Her2-receptor status	
Negative	11178 (90)
Positive	1302 (10)
Unknown	5939
Type of surgery	
Mastectomy	11111 (60)
BCS	7308 (40)
Surgical margins	
Free	17204 (96)
Not free	807 (4)
Unknown	408
Radiotherapy after BCS	
Yes	6761 (93)
No	547 (7)
Adjuvant endocrine therapy*	
Yes	8026 (53)
No	7027 (47)
Adjuvant chemotherapy	
Yes	276 (1)
No	18143 (99)

*Percentage of the 15053 hormone-receptor positive patients. Abbreviations: ER, estrogen receptor-PR, progesterone receptor-BCS, breast-conserving surgery.

A. 70-74 years



B. 75-79 years



C. ≥80 years

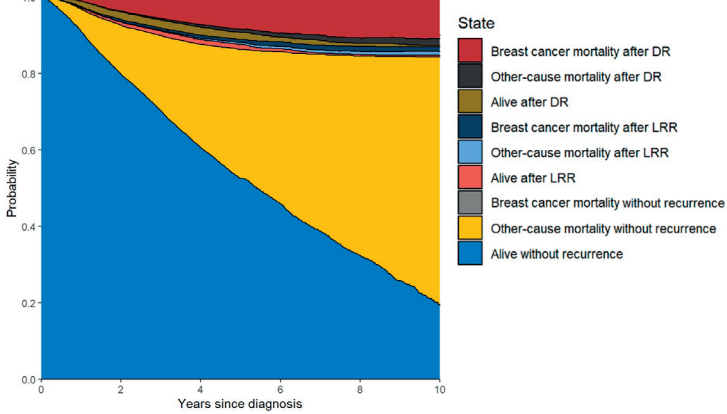


Figure 2. Outcome probabilities since diagnosis based on the multi-state model (see figure 1). Curves are stacked, meaning that the probabilities of the different outcomes are indicated by the distances between the lines. Probabilities are displayed for three age groups: A. 70-74 years. B. 75-79 years. and C. ≥80 years. Abbreviations: DR, distant recurrence; LRR, locoregional recurrence.

Table 2. Five- and ten-year breast cancer mortality and other-cause mortality probabilities (in %) from time of first diagnosis of breast cancer according to state from where the patients died (no recurrence, locoregional recurrence, and distant recurrence) stratified by age group. "Overall" indicates the sum of mortality from the no recurrence, locoregional and distant recurrence states (all mortality).

State	Without recurrence			Locoregional recurrence			Distant recurrence			Overall		
	Breast cancer mortality % (95% CI)	Other-cause mortality % (95% CI)	Breast cancer mortality % (95% CI)	Other-cause mortality % (95% CI)	Breast cancer mortality % (95% CI)	Other-cause mortality % (95% CI)	Breast cancer mortality % (95% CI)	Other-cause mortality % (95% CI)	Breast cancer mortality % (95% CI)	Other-cause mortality % (95% CI)	Breast cancer mortality % (95% CI)	Other-cause mortality % (95% CI)
At 5 years												
70-74 years	-0.9 (-0.3; 0)*	9.9 (9.8-10.0)	0 (0-0.3)	0.1 (0.1-0.1)	5.5 (5.0-6.0)	0.2 (0.2-0.2)	4.6 (3.8-5.4)	10.2 (9.5-14.5)				
75-79 years	-0.6 (0-0.6)*	17.1 (16.8-17.3)	0 (0-0.3)	0.2 (0.2-0.3)	9.5 (8.8-10.3)	0.5 (0.4-0.6)	8.9 (7.3-10.5)	17.8 (17.6-18.0)				
≥80 years	-6.1 (-4.7; 0)*	39.9 (39.3-40.5)	0.8 (0.2-1.3)	0.5 (0.3-0.8)	8.3 (7.7-9.0)	0.9 (0.8-1.0)	3.0 (1.3-4.8)	41.3 (40.6-42.0)				
At 10 years												
70-74 years	1.4 (0-3.5)	23.0 (22.7-23.3)	0.4 (0-0.9)	0.3 (0.3-0.4)	10.2 (9.1-11.3)	0.5 (0.4-0.6)	12.0 (9.4-14.2)	23.9 (23.6-24.2)				
75-79 years	1.9 (0-5.3)	36.7 (36.0-37.5)	0.4 (0-1.1)	0.7 (0.5-1.0)	14.6 (13.3-15.8)	1.3 (1.0-1.6)	16.8 (13.0-20.6)	38.8 (37.9-39.6)				
≥80 years	-5.5 (-2.4; 0)*	70.5 (68.8-72.2)	1.3 (0.6-1.9)	1.0 (0.5-1.5)	10.9 (9.9-11.8)	1.7 (1.4-2.1)	6.6 (2.8-10.4)	73.3 (71.4-75.2)				

*Since the total and population hazard must always be positive, their difference (the excess hazard) can under rare circumstances be negative, leading to negative probabilities. Although contra-intuitive, these negative quantities can be interpreted as meaning that for certain patient groups the survival is better than that of the general population since they represent a relatively fit group. CI, confidence interval.

Locoregional recurrence

Breast cancer and other-cause mortality probabilities after LRR are shown in Table 3 and Supplementary Figure 2. For patients alive after LRR at two years after diagnosis (and without a DR in this timeframe), the 10-year other-cause mortality probabilities were 16.2% (95%CI 11.7-20.6%), 30.9% (95%CI 21.9-39.8%), and 48.3% (95%CI 27.7-68.9%) in patients aged 70-74 years, 75-79 years, and ≥ 80 years respectively. Overall, the 10-year probabilities of breast cancer mortality were 48.3% (95%CI 23.2-73.5%), 35.4% (95%CI 6.7-64.2%), and 41.3% (95%CI 12.6-70.0%) respectively. For patients alive after LRR at two years after diagnosis, the 10-year probabilities of DR with subsequent breast cancer death were 32.0% (95%CI 8.7-55.4%), 28.2% (95%CI 8.0-48.4%), and 12.7% (95%CI 0-28.1%), respectively. Setting the landmark at 1 year led to worse outcomes at 10 years.

Table 3. Five- and ten-year breast cancer mortality and other cause mortality probabilities (in %) from time of diagnosis for patients alive and in the locoregional recurrence state at the two-year landmark by age group. "Overall" indicates the sum of mortality from the locoregional and distant recurrence states.

	Locoregional recurrence		Distant recurrence		Overall	
	Breast cancer mortality % (95% CI)	Other-cause mortality % (95% CI)	Breast cancer mortality % (95% CI)	Other-cause mortality % (95% CI)	Breast cancer mortality % (95% CI)	Other-cause mortality % (95% CI)
At 5 years						
70-74 years	3.0 (0-20.0)	5.1 (3.6-6.5)	16.5 (0-35.7)	0.7 (0-1.4)	19.5 (0-41.6)	5.7 (5.0-6.5)
75-79 years	-7.0 (0-3.4)	11.9 (9.4-14.3)	13.7 (0-29.3)	0.9 (0-1.8)	6.7 (0-27.2)	12.7 (10.7-14.8)
≥ 80 years	8.4 (0-35.8)	28.1 (17.5-38.7)	6.8 (0-20.6)	0.9 (0-2.8)	15.2 (0-43.3)	29.0 (19.4-38.7)
At 10 years						
70-74 years	16.3 (0-38.2)	14.4 (9.0-19.8)	32.0 (8.7-55.4)	1.7 (0.6-2.8)	48.3 (23.2-73.5)	16.2 (11.7-20.6)
75-79 years	7.2 (0-30.0)	27.6 (18.2-36.9)	28.2 (8.0-48.4)	3.3 (1.2-5.4)	35.4 (6.7-64.2)	30.9 (21.9-39.8)
≥ 80 years	28.6 (0-57.2)	45.5 (22.7-68.3)	12.7 (0-28.1)	2.8 (0-5.6)	41.3 (12.6-70.0)	48.3 (27.7-68.9)

Abbreviations: CI, confidence interval.

Distant recurrence

Breast cancer and other-cause mortality probabilities after DR are shown in Table 4 and Supplementary Figure 3. After a DR in the first two years after diagnosis for patients still alive at the two-year landmark, the 5-year probabilities of breast cancer mortality were 82.2% (95%CI 78.3-86.0%), 84.3% (95%CI 80.9-87.8%), and 83.4% (95%CI 80.0-87.2%) in patients aged 70-74 years, 75-79 years, and ≥ 80 years respectively. Ten-year probabilities were 95.3% (95%CI 94.2-96.4%), 93.1% (95%CI 91.6-94.6%), and 88.6% (95%CI 86.5-90.8%) respectively. The 10-year other-cause mortality probabilities were 3.8% (95%CI 3.2-4.4%), 6.3% (95%CI 5.3%-7.4%), and 11.1% (95%CI 9.0%-13.1%) respectively.

Setting the landmarks at 1 or 3 years only led to minimal changes. Breast cancer mortality was the 10 year-outcome for more than 90% of patients below the age of 80. When the

moment of DR was taken as starting point of the analysis, outcomes were somewhat better for patients with a recurrence later than 3 years after diagnosis (Supplementary Table 2).

Table 4. Five- and ten-year breast cancer mortality and other-cause mortality probabilities (in %) from time of diagnosis for patients alive and in the distant recurrence state at the two-year landmark by age group.

	Breast cancer mortality % (95% CI)	Other-cause mortality % (95% CI)
At 5 years		
70-74 years	82.2 (78.3-86.0)	2.8 (2.5-3.2)
75-79 years	84.3 (80.9-87.8)	5.0 (4.4-5.6)
≥80 years	83.4 (80.0-87.2)	9.6 (8.0-11.1)
At 10 years		
70-74 years	95.3 (94.2-96.4)	3.8 (3.2-4.4)
75-79 years	93.1 (91.6-94.6)	6.3 (5.3-7.4)
≥80 years	88.6 (86.5-90.8)	11.1 (9.0-13.1)

Abbreviations: CI, confidence interval.

DISCUSSION

This study showed that other-cause mortality is by far outweighed by the high breast cancer mortality following a DR. Although older patients mostly die from other causes, after developing a DR, the prognosis seems to be only determined by breast cancer. The different sensitivity analyses showed that, although age and moment of recurrence had some impact on outcomes, in all situations and independent of the model chosen, breast cancer mortality was high in the years following the recurrence. A previous hospital-based cohort study had similar findings, however other-cause mortality was not separated and probably less pronounced since no age selection-criteria were used.¹⁴

In line with previous literature,¹⁰⁻¹³ LRR was a predictor for worse prognosis. For patients younger than 80 years, the 10-year probability of breast cancer mortality was 12-17%, whereas after developing a LRR, 49-53% of the patients died from breast cancer. Yet, it should be emphasized that for the whole cohort the chances of dying from breast cancer after a LRR are very low with 10-year probabilities between 0.8% to 1.5%. This is a result of the very low rates of LRR in the modern era.

We hypothesize that some patients already had distant (micro)metastases at time of LRR detection as many died without developing a DR first. This is supported by recent data showing that 27% of the patients who initially presented with a LRR were found to have synchronous DR.¹¹ Similarly, in our own cohort, 28% of the patients with a LRR had a DR at the same time (which were classified according to the latter). Furthermore, the classification of

LRR has changed since these data have been collected. Nowadays, contralateral tumours are not considered as recurrence, and a better distinction between ipsilateral second primary tumours and recurrences is possible. This implies that a modern patient with a LRR might even have a worse prognosis than the patients in the study since second primary tumours generally have a better prognosis than recurrences.

The multi-state model allows to estimate treatment-related mortality.¹⁵ As patients with breast cancer have to develop a recurrence before dying from breast cancer, excess mortality in patients without a recurrence can be interpreted as treatment-related mortality. The treatment-related mortality at 10 years was 1-2% for patients younger than 80 years in our cohort. Since patients over 70 years were not treated with chemotherapy conform the Dutch treatment guideline, this is expected to be related to endocrine therapy such as tamoxifen-related thromboembolic events. Although breast cancer treatments are generally considered as low risk treatments, it is reassuring that our findings can confirm this for the older population in which predisposed factors related to ageing could increase the morbidity risk. Moreover, this is another indication of the quality of the data since unrecorded distant recurrences would falsely have resulted in breast cancer mortality in patients without a recurrence; the low probability of this event shows that underreporting was no serious issue.

Our finding that LRR and DR were strong predictors for breast cancer death reasons against omitting treatments in older patients with recurrent breast cancer because of the competing mortality risk. Recent population-based data showed an improvement in relative survival over time for patients aged ≥ 75 years with stage IV breast cancer, together with the increased use of CDK4/6 inhibitors.²⁷ Relative survival had also improved for patients aged 65-75 years with stage III breast cancer which was most likely explained by an increase in adjuvant chemotherapy.²⁷ These findings emphasize that at least some older patients will benefit from more extensive treatment.

This study was the first study to assess the occurrence of other-cause mortality after locoregional and distant recurrence separately which was possible thanks to the integration of methods from relative survival into a multi-state model. Furthermore, we used a large nationwide population-based cohort with detailed baseline information, long follow-up and available recurrence status. A limitation was that patients over 80 years had a better life expectancy than the matched general population (reflected in the negative breast cancer mortality probability in patients without a recurrence due to a larger expected other-cause mortality than the actual observed mortality). This indicates that the relative survival assumption that the patient population is a random subset of the general population was violated for the oldest patients. This is likely explained by the selection of surgically treated patients as frail patients may receive primary endocrine treatment instead (approximately

30% with hormone-receptor positivity).²⁸ Although this might lead to a small overestimation of other-cause mortality for the oldest age group, the general patterns are not affected by this.

In conclusion, our findings indicate that other-cause mortality plays a negligible role in the outcome of older patients once they develop a DR. LRR is a predictor for worse prognosis, yet leads to a small contribution of breast cancer death after LRR for the whole cohort since the incidence of LRR is low. Future studies need to investigate how these outcomes can be accurately incorporated in clinical prediction tools that could improve individualized treatments in older patients with breast cancer.

Acknowledgements

The authors thank Maja Pohar Perme (Institute for Biostatistics and Medical Informatics, University of Ljubljana) for the contributions to the development and implementation of the statistical methodology, and Edouard Bonneville (Department of Biomedical Data Sciences, Leiden University Medical Center) and Dirk-Jan Eikema (EBMT, Leiden) for their helpful R functions. The authors would also like to thank Linda de Munck, Kelly de Ligt, and the datamanagers of Netherlands Comprehensive Cancer Organization (IKNL) for the data collection.

REFERENCES

1. DeSantis CE, Ma J, Goding Sauer A, Newman LA, Jemal A. Breast cancer statistics, 2017, racial disparity in mortality by state. *CA Cancer J Clin*. Nov 2017;67(6):439-448. doi:10.3322/caac.21412
2. Barnett K, Mercer SW, Norbury M, Watt G, Wyke S, Guthrie B. Epidemiology of multimorbidity and implications for health care, research, and medical education: a cross-sectional study. *Lancet*. Jul 7 2012;380(9836):37-43. doi:10.1016/s0140-6736(12)60240-2
3. Patnaik JL, Byers T, Diguseppi C, Denberg TD, Dabelea D. The influence of comorbidities on overall survival among older women diagnosed with breast cancer. *J Natl Cancer Inst*. Jul 20 2011;103(14):1101-11. doi:10.1093/jnci/djr188
4. Derks MGM, van de Velde CJH, Giardiello D, et al. Impact of Comorbidities and Age on Cause-Specific Mortality in Postmenopausal Patients with Breast Cancer. *Oncologist*. Jan 3 2019;doi:10.1634/theoncologist.2018-0010
5. Kiderlen M, de Glas NA, Bastiaannet E, et al. Impact of comorbidity on outcome of older breast cancer patients: a FOCUS cohort study. *Breast Cancer Res Treat*. May 2014;145(1):185-92. doi:10.1007/s10549-014-2917-7
6. Derks MGM, Bastiaannet E, van de Water W, et al. Impact of age on breast cancer mortality and competing causes of death at 10 years follow-up in the adjuvant TEAM trial. *Eur J Cancer*. Aug 2018;99:1-8. doi:10.1016/j.ejca.2018.04.009
7. de Boer AZ, van der Hulst HC, de Glas NA, et al. Impact of Older Age and Comorbidity on Locoregional and Distant Breast Cancer Recurrence: A Large Population-Based Study. *Oncologist*. Jan 2020;25(1):e24-e30. doi:10.1634/theoncologist.2019-0412
8. de Glas NA, Kiderlen M, Vandenbroucke JP, et al. Performing Survival Analyses in the Presence of Competing Risks: A Clinical Example in Older Breast Cancer Patients. *J Natl Cancer Inst*. May 2016;108(5)doi:10.1093/jnci/djv366
9. Wapnir IL, Anderson SJ, Mamounas EP, et al. Prognosis after ipsilateral breast tumor recurrence and locoregional recurrences in five National Surgical Adjuvant Breast and Bowel Project node-positive adjuvant breast cancer trials. *J Clin Oncol*. May 1 2006;24(13):2028-37. doi:10.1200/jco.2005.04.3273
10. Anderson SJ, Wapnir I, Dignam JJ, et al. Prognosis after ipsilateral breast tumor recurrence and locoregional recurrences in patients treated by breast-conserving therapy in five National Surgical Adjuvant Breast and Bowel Project protocols of node-negative breast cancer. *J Clin Oncol*. May 20 2009;27(15):2466-73. doi:10.1200/JCO.2008.19.8424
11. Neuman HB, Schumacher JR, Francescatti AB, et al. Risk of Synchronous Distant Recurrence at Time of Locoregional Recurrence in Patients With Stage II and III Breast Cancer (AFT-01). *J Clin Oncol*. Apr 1 2018;36(10):975-980. doi:10.1200/jco.2017.75.5389
12. Tanis E, van de Velde CJ, Bartelink H, van de Vijver MJ, Putter H, van der Hage JA. Locoregional recurrence after breast-conserving therapy remains an independent prognostic factor even after an event free interval of 10 years in early stage breast cancer. *Eur J Cancer*. Aug 2012;48(12):1751-6. doi:10.1016/j.ejca.2012.02.051
13. Melvin JC, Purushotham AD, Garmo H, et al. Progression of breast cancer following locoregional ipsilateral recurrence: importance of interval time. *Br J Cancer*. Jan 12 2016;114(1):88-95. doi:10.1038/bjc.2015.314

14. Sopik V, Sun P, Narod SA. Predictors of time to death after distant recurrence in breast cancer patients. *Breast Cancer Res Treat.* Jan 2019;173(2):465-474. doi:10.1007/s10549-018-5002-9
15. Schetelig J, de Wreede LC, van Gelder M, et al. Late treatment-related mortality versus competing causes of death after allogeneic transplantation for myelodysplastic syndromes and secondary acute myeloid leukemia. *Leukemia.* Mar 2019;33(3):686-695. doi:10.1038/s41375-018-0302-y
16. Manevski D, Putter H, Pohar Perme M, Bonneville EF, Schetelig J, de Wreede LC. Integrating relative survival in multi-state models -- a non-parametric approach. *Accepted for publication in Statistical Methods in Medical Research.* January 2022;(arXiv:2106.12399)
17. Greene FL, Page DL, Fleming I, et al. *AJCC Cancer Staging Manual.* 6 ed. Springer; 2002.
18. Moosdorff M, van Roozendaal LM, Strobbe LJ, et al. Maastricht Delphi consensus on event definitions for classification of recurrence in breast cancer research. *J Natl Cancer Inst.* Dec 2014;106(12) doi:10.1093/jnci/dju288
19. Schemper M, Smith TL. A note on quantifying follow-up in studies of failure time. *Control Clin Trials.* Aug 1996;17(4):343-6. doi:10.1016/0197-2456(96)00075-x
20. Putter H, Fiocco M, Geskus RB. Tutorial in biostatistics: competing risks and multi-state models. *Stat Med.* May 20 2007;26(11):2389-430. doi:10.1002/sim.2712
21. de Wreede LC, Fiocco M, Putter H. The mstate package for estimation and prediction in non- and semi-parametric multi-state and competing risks models. *Comput Methods Programs Biomed.* Sep 2010;99(3):261-74. doi:10.1016/j.cmpb.2010.01.001
22. The Human Mortality Database. www.mortality.org
23. Pohar M, Stare J. Relative survival analysis in R. *Comput Methods Programs Biomed.* Mar 2006;81(3):272-8. doi:10.1016/j.cmpb.2006.01.004
24. Perme MP, Pavlic K. Nonparametric Relative Survival Analysis with the R Package relsurv. *Journal of Statistical Software.* 2018;
25. Jorgensen TL, Hallas J, Friis S, Herrstedt J. Comorbidity in elderly cancer patients in relation to overall and cancer-specific mortality. *Br J Cancer.* Mar 27 2012;106(7):1353-60. doi:10.1038/bjc.2012.46
26. Aarts MJ, van der Aa MA, Coebergh JW, Louwman WJ. Reduction of socioeconomic inequality in cancer incidence in the South of the Netherlands during 1996-2008. *Eur J Cancer.* Sep 2010;46(14):2633-46. doi:10.1016/j.ejca.2010.07.039
27. de Glas N, Bastiaannet E, de Boer A, Siesling S, Liefers GJ, Portielje J. Improved survival of older patients with advanced breast cancer due to an increase in systemic treatments: a population-based study. *Breast Cancer Res Treat.* Nov 2019;178(1):141-149. doi:10.1007/s10549-019-05356-z
28. de Boer AZ, de Glas NA, de Mheen PJM, et al. Effect of omission of surgery on survival in patients aged 80 years and older with early-stage hormone receptor-positive breast cancer. *Br J Surg.* Apr 7 2020;doi:10.1002/bjs.11568

Supplementary Table 1. Patient, disease and treatment characteristics by age group

	70-74 years N=7793	75-79 years N=4332	≥80 years N=6294	
	N (%)	N (%)	N (%)	<i>p</i> value
Age. median (IQR)	72.5 (71.2-73.7)	77.4 (75.9-78.7)	83.8 (81.9-86.3)	
No. of comorbidities				<0.001
0	1186 (36)	458 (26)	561 (9)	
1-2	1668 (51)	971 (55)	1369 (22)	
≥3	438 (13)	348 (20)	510 (8)	
Unknown	4501	2555	3854	
Stage				<0.001
I	4497 (58)	1622 (37)	1633 (26)	
II	2581 (33)	2060 (48)	3535 (56)	
III	706 (9)	644 (15)	1113 (18)	
Unknown	9	6	13	
Histological grade				<0.001
1	2098 (29)	872 (22)	1228 (21)	
2	3560 (49)	1902 (47)	2928 (50)	
3	1649 (23)	1235 (31)	1703 (29)	
Unknown	486	323	435	
Hormone-receptor status				<0.001
ER and/or PR positive	6497 (88)	3474 (84)	5082 (85)	
ER and PR negative	919 (12)	650 (16)	877 (15)	
Unknown	377	208	335	
Her2-receptor status				0.002
Negative	4908 (91)	2594 (88)	3676 (89)	
Positive	508 (9)	340 (12)	454 (11)	
Unknown	2377	1398	2164	
Type of surgery				<0.001
Mastectomy	3439 (44)	2684 (62)	4988 (79)	
BCS	4354 (56)	1648 (38)	1306 (21)	
Surgical margins				0.001
Free	7348 (94)	4052 (94)	5804 (92)	
Not free	297 (4)	192 (4)	318 (5)	
Unknown	148 (2)	88 (2)	172 (3)	
Radiotherapy after BCS				<0.001
Yes	4243 (97)	1570 (95)	948 (73)	
No	111 (3)	78 (5)	358 (27)	
Adjuvant endocrine therapy*				<0.001
Yes	3010 (39)	2109 (49)	3283 (52)	
No	4783 (61)	2223 (51)	3011 (48)	

Supplementary Table 1. Patient, disease and treatment characteristics by age group (*continued*)

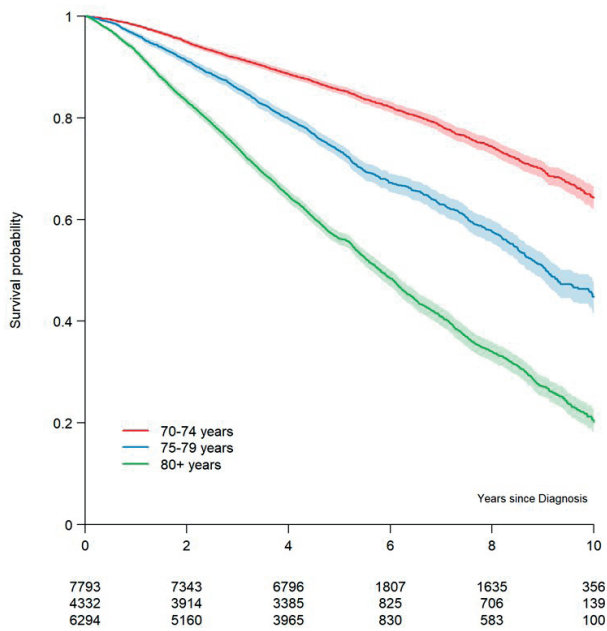
	70-74 years N=7793	75-79 years N=4332	≥80 years N=6294	
	N (%)	N (%)	N (%)	<i>p</i> value
Adjuvant chemotherapy				<0.001
Yes	237 (3)	31 (1)	8 (0)	
No	7556 (97)	4301 (99)	6286 (100)	

Differences between age groups were tested by means of Pearson's χ^2 test. *Percentage of hormone-receptor positive patients. Abbreviations: ER, estrogen receptor; PR, progesterone receptor; BCS, breast-conserving surgery.

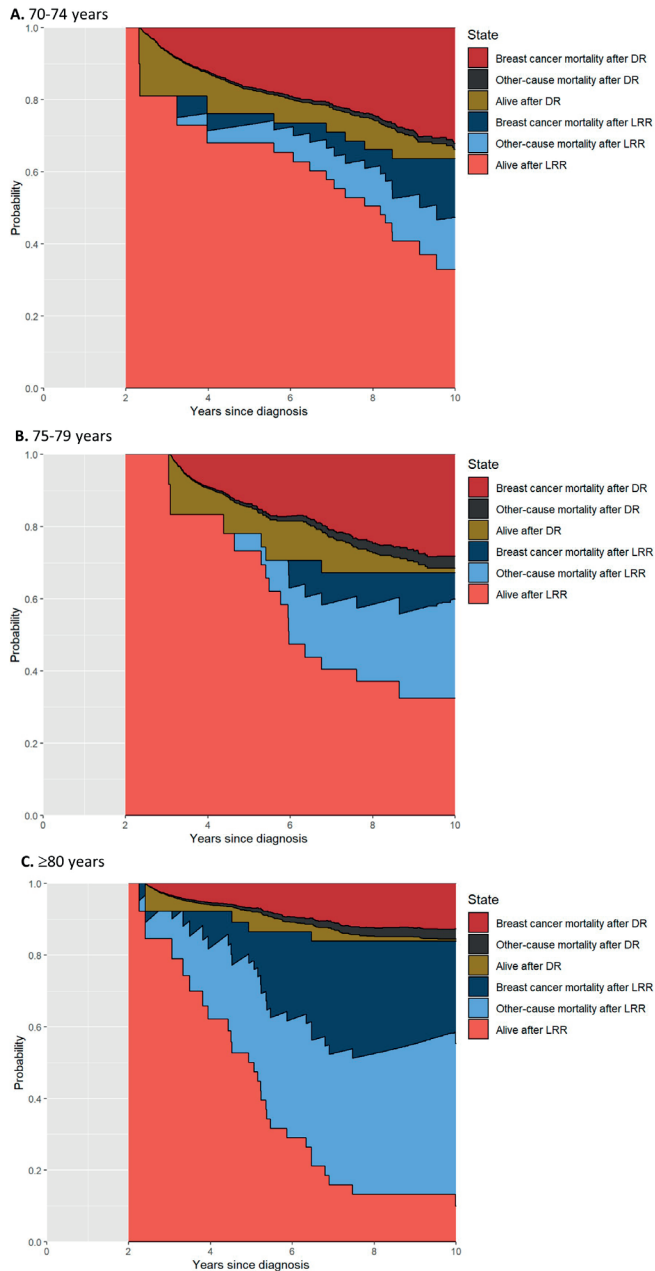
Supplementary Table 2. Three-year breast cancer mortality and other-cause mortality probabilities (in %) from time of distant recurrence by age group and by timing of recurrence.

	Breast cancer mortality % (95% CI)	Other-cause mortality % (95% CI)
Recurrence before 3 years		
70-74 years	85.0 (81.5-88.6)	2.5 (2.2-2.7)
75-79 years	84.0 (80.1-87.9)	4.5 (4.0-5.0)
≥80 years	82.2 (78.9-85.6)	8.4 (7.5-9.3)
Recurrence after 3 years		
70-74 years	78.6 (71.7-85.6)	4.6 (4.1-5.1)
75-79 years	73.6 (65.9-81.4)	8.0 (6.8-9.1)
≥80 years	73.7 (65.4-81.9)	13.4 (11.2-15.7)

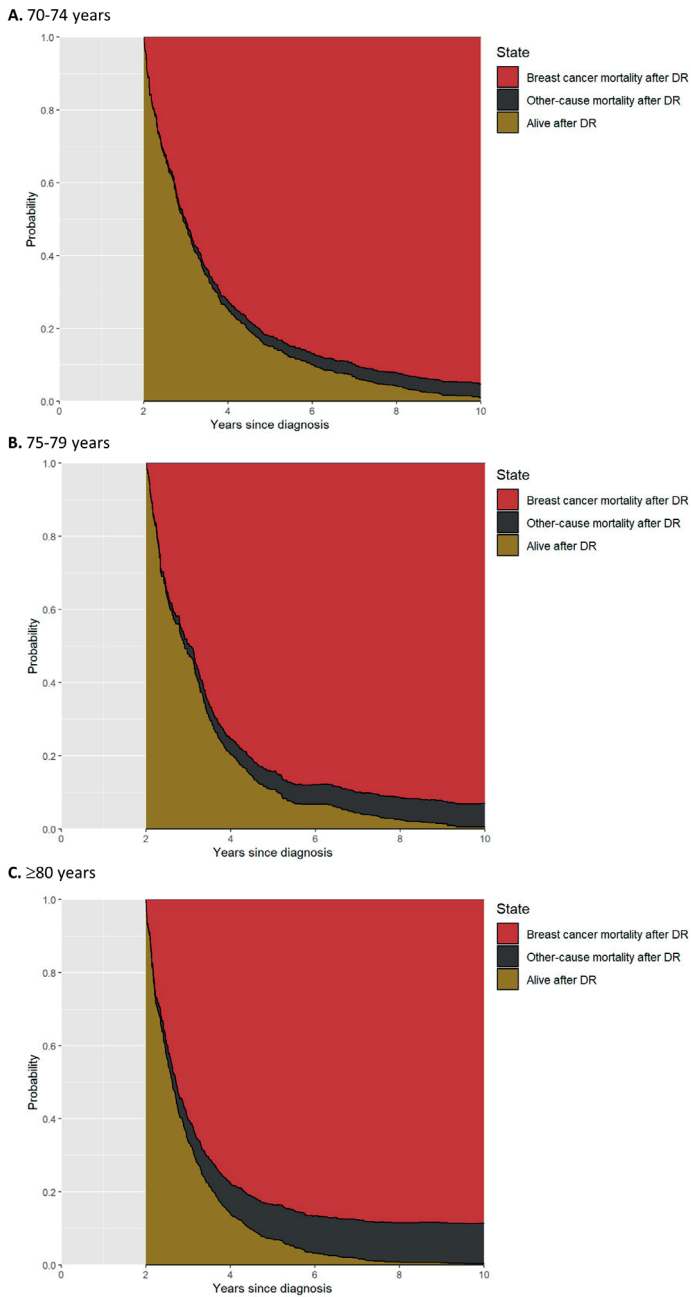
Abbreviations: CI, confidence interval.



Supplementary Figure 1. Kaplan Meier curves for overall mortality by age groups with the number of patients in follow-up in the analysis population.



Supplementary Figure 2. Outcome probabilities of patients alive at 2 years after diagnosis with a locoregional recurrence (but no distant recurrence) before 2 years, based on the multi-state model (see figure 1). All patients start at alive with locoregional recurrence without distant recurrence. Next states are distant recurrence and death. The observed mortality after locoregional occurrence has been split in two parts, based on mortality data for the general population: breast cancer mortality and other-cause mortality. The same has been done for mortality after distant recurrence. Curves are stacked, meaning that the probabilities of the different outcomes are indicated by the distances between the lines. Probabilities are displayed for three age groups: **A.** 70-74 years. **B.** 75-79 years. **C.** ≥ 80 years. Abbreviations: DR, distant recurrence; LRR, locoregional recurrence.



Supplementary Figure 3. Outcome probabilities of patients alive at 2 years after diagnosis with a distant recurrence before 2 years, based on the multi-state model (see figure 1). All patient start at alive with distant recurrence. The only next state is death. The observed mortality has been split in two parts, based on mortality data for the general population: breast cancer mortality and other-cause mortality. Curves are stacked, meaning that the probabilities of the different outcomes are indicated by the distances between the lines. Probabilities are displayed for three age groups: **A.** 70-74 years. **B.** 75-79 years. and **C.** ≥ 80 years. Abbreviations: DR, distant recurrence.

