



Universiteit
Leiden
The Netherlands

Molecular epidemiology and clinical impact of rhinovirus infections in adults during three epidemic seasons in 11 European countries (2007-2010)

Zlateva, K.T.; Rijn, A.L. van; Simmonds, P.; Coenjaerts, F.E.J.; Loon, A.M. van; Verheij, T.J.M.; ... ; GRACE Study Grp

Citation

Zlateva, K. T., Rijn, A. L. van, Simmonds, P., Coenjaerts, F. E. J., Loon, A. M. van, Verheij, T. J. M., ... Claas, E. C. J. (2020). Molecular epidemiology and clinical impact of rhinovirus infections in adults during three epidemic seasons in 11 European countries (2007-2010). *Thorax*, 75(10), 882-890. doi:10.1136/thoraxjnl-2019-214317

Version: Publisher's Version

License: [Creative Commons CC BY-NC 4.0 license](#)

Downloaded from: <https://hdl.handle.net/1887/3184131>

Note: To cite this publication please use the final published version (if applicable).



OPEN ACCESS

ORIGINAL RESEARCH

Molecular epidemiology and clinical impact of rhinovirus infections in adults during three epidemic seasons in 11 European countries (2007–2010)

Kalina T Zlateva,¹ Anneloes L van Rijn ,¹ Peter Simmonds,² Frank E J Coenjaerts,³ Anton M van Loon,³ Theo J M Verheij,⁴ Jutte J C de Vries,¹ Paul Little ,⁵ Christopher C Butler,⁶ Erik W van Zwet,⁷ Herman Goossens,⁸ Margareta Ieven,⁸ Eric C J Claas,¹ on behalf of the GRACE Study Group

► Additional material is published online only. To view please visit the journal online (<http://dx.doi.org/10.1136/thoraxjnl-2019-214317>).

For numbered affiliations see end of article.

Correspondence to

Eric C J Claas, Medical Microbiology, Leiden Universitair Medisch Centrum, Leiden 2300RC, The Netherlands; E.C.J.Claas@lumc.nl

KTZ and ALvR contributed equally.

Received 12 November 2019

Revised 14 April 2020

Accepted 18 June 2020

Published Online First

20 August 2020

ABSTRACT

Background Differences in clinical impact between rhinovirus (RVs) species and types in adults are not well established. The objective of this study was to determine the epidemiology and clinical impact of the different RV species.

Methods We conducted a prospective study of RVs infections in adults with acute cough/lower respiratory tract infection (LRTI) and asymptomatic controls. Subjects were recruited from 16 primary care networks located in 11 European countries between 2007 and 2010. RV detection and genotyping was performed by means of real time and conventional reverse-transcriptase polymerase chain reaction assays, followed by sequence analysis. Clinical data were obtained from medical records and patient symptom diaries.

Results RVs were detected in 566 (19%) of 3016 symptomatic adults, 102 (4%) of their 2539 follow-up samples and 67 (4%) of 1677 asymptomatic controls. Genotyping was successful for 538 (95%) symptomatic subjects, 86 (84%) follow-up infections and 62 (93%) controls. RV-A was the prevailing species, associated with an increased risk of LRTI as compared with RV-B (relative risk (RR), 4.5; 95% CI 2.5 to 7.9; $p < 0.001$) and RV-C (RR 2.2; 95% CI 1.2 to 3.9; $p = 0.010$). In symptomatic subjects, RV-A loads were higher than those of RV-B ($p = 0.015$). Symptom scores and duration were similar across species. More RV-A infected patients felt generally unwell in comparison to RV-C ($p = 0.023$). Of the 140 RV types identified, five were new types; asymptomatic infections were associated with multiple types.

Interpretation In adults, RV-A is significantly more often detected in cases with acute cough/LRTI than RV-C, while RV-B infection is often found in asymptomatic patients.

INTRODUCTION

Rhinoviruses (RVs) are the most prevalent respiratory pathogens in humans, accounting for approximately 20%–50% of respiratory tract infections (RTIs) annually.^{1–4} Infection with RV can lead to a wide spectrum of clinical manifestations ranging from asymptomatic to severe lower respiratory illness.^{2, 5, 6} RV is also recognised as a major cause of exacerbations of chronic obstructive pulmonary disease (COPD), asthma and cystic

Key messages**What is the key question?**

- What is the epidemiology and clinical impact of the different rhinovirus (RV) species.

What is the bottom line?

- RV-A was significantly more often detected in adults with acute lower respiratory tract infections than RV-C, while RV-B infection was often found in asymptomatic patients.

Why read on?

- The epidemiology and clinical impact of RVs is poorly understood and this is the most comprehensive assessment of RV species-specific clinical outcomes in adults with symptoms of lower respiratory tract infection visiting their general practitioner.

fibrosis.^{7, 8} Coinfections with other viral or bacterial pathogens have been frequently reported, potentially increasing clinical severity.^{5, 9, 10} Over 160 RV types have been identified and classified into three genetically distinct species (RV-A, RV-B and RV-C) within the genus *Enterovirus* of the family *Picornaviridae*.¹¹ RV-A has been the most frequently detected RV species, followed by RV-C and RV-B, respectively.^{3, 4} Although the clinical significance of RV species and types remains poorly defined, RV-C has been predominantly linked to asthma exacerbations and more serious respiratory illness in young children.^{12–14} More recently similar clinical presentations across species have been reported.^{15–18}

Despite the high morbidity and disease burden of RV infections, there are currently no effective and safe antiviral treatments, and efforts to develop an effective vaccine have been hampered by the substantial antigenic diversity between RV types and species. A more practical approach could be the development of vaccines targeting more prevalent or pathogenic RV types although the feasibility of this depends on whether particular RV species or types are associated with more frequent or severe respiratory illness. Previous studies have been limited by the absence of asymptomatic controls



© Author(s) (or their employer(s)) 2020. Re-use permitted under CC BY-NC. No commercial re-use. See rights and permissions. Published by BMJ.

To cite: Zlateva KT, van Rijn AL, Simmonds P, et al. *Thorax* 2020;**75**:882–890.



and incomplete microbiological investigation, and were focused mainly on hospitalised young children.

The aim of this study was to determine the epidemiology and clinical impact of the different RV species through a, community-based comparative evaluation of disease severity among adult subjects infected with different RV species and types. Additionally, the multicentre approach provides insight in geographical differences in RV epidemiology.

METHODS

Study design and subjects

Respiratory samples were obtained from subjects aged 18 years and older enrolled as part of the genomics to combat resistance against antibiotics community-acquired lower respiratory tract infections (LRTIs) in Europe (GRACE) European Network of Excellence (www.grace-lrti.org) focusing on improving the management of community-acquired LRTIs. Sixteen primary care networks from 11 European countries including: Belgium (Antwerp and Ghent); France (Nice), Germany (Rotenberg), Italy (Milan), the Netherlands (Utrecht), Poland (Bialystok, Lodz and Szczecin), Slovakia (Bratislava), Slovenia (Jesenice), Spain (Barcelona and Mataró), Sweden (Jönköping) and UK (Cardiff and Southampton) participated in prospective recruitment of patients presenting with acute cough and signs of an acute LRTI over the period October 2007–June 2010. Cases were patients presenting at the general practitioner (GP) with an acute or worsened cough (≤ 28 days duration) as the main symptom, or any clinical presentation considered by the GP to be caused by LRTI and consulting for the first time for this illness episode. Exclusion criteria were pregnancy, breast feeding and any condition associated with severe impaired immune status. Asymptomatic controls were subjects who consulted their GP for complaints other than respiratory, who had no symptoms and signs of a RTI and had not used antibiotics or antivirals in the previous 2 weeks. Case and controls were recruited from the same GP centre, within 14 days of each other and with a maximum 5-year age difference.

Nasopharyngeal swab (NPS) and sputum (if available) samples were collected from case (V1) and control (C1) patients during their first visit to the GP, for which standardisation was obtained by training of staff. Follow-up NPS samples were obtained from case patients at the second visit (V2) to the GP after approximately 28 days. Medical ethics committees in participating countries approved the study and all participants provided written informed consent.

The original study was designed to evaluate the aetiology of LRTIs in GP settings, as described by Ieven *et al*, this study is a post hoc analysis.¹⁹

Data collection

Clinical data, including medical history, comorbidities and their management/treatment, and days the patient felt unwell were recorded by the GP on a case report form (CRF) at the first consultation. The presence or absence of cough, sputum production, shortness of breath, wheeze, coryza, fever, chest pain, muscle aching, headache, disturbed sleep, feeling generally unwell, interference with normal activities, confusion/disorientation and diarrhoea, were documented. If present, the severity of each symptom was rated on a 4-point scale ranging from 'no problem=1' to 'severe problem=4'. Following the first GP consultation, patients were requested to complete a daily symptom diary for the duration of illness (to a maximum of 28 days). The presence and severity of the above symptoms (except

diarrhoea) were rated on a 7-point scale ranging from 'normal/not affected=0' to 'as bad as it could be=6'.

Clinical assessment

The disease severity of RV infections was evaluated by comparing the following clinical characteristics: (1) initial symptom score, (2) duration of illness, (3) maximal symptom score and (4) duration of higher symptom score. The 'initial symptom score' was estimated as the mean severity score of at least 12 of the 14 symptoms evaluated by the GP during the first visit of the patient. The 'duration of illness', 'maximal symptom score' and 'duration of higher symptom score' were estimated based on the presence and severity of 13 symptoms excluding diarrhoea, recorded in the patient's daily symptom diary as described previously. The duration of illness was defined as the total sum of days a patient felt unwell before the first GP visit and the number of days the patient experienced any of the 13 symptoms over the 28 days follow-up period. The duration of higher symptom score was the number of days a patient had a mean daily symptom score of two or more based on the 7-point scale.²⁰ The occurrence and severity of each symptom recorded during the first visit to the GP were also compared between RV species.

Laboratory investigation

The overall results of the laboratory diagnostics were previously described by Ieven *et al*.¹⁹ In short, total nucleic acids were extracted at the University Hospital Antwerp, and examined for RV by real-time PCR (RT-PCR) at the Leiden University Medical Center. Cycle quantification (Cq) values, which had been normalised using a fixed baseline fluorescence threshold, were used as an indicative measure of viral load. Bacterial and fungal infections were detected in NPS or/and sputum samples by conventional culture and/or molecular methods.²¹

RV typing

RV genotyping was conducted by amplification and sequencing of partial VP3/VP1, VP4/VP2 or/and 5' - untranslated region (5'-UTR) viral genome fragments as described previously.²⁰ Basic local alignment search tool with nucleotide database (BLASTn) analyses were conducted for initial species identification and then confirmed by phylogenetic analysis. RV sequences were compared with prototype strains and assigned to types based on phylogenetic analysis and pairwise p distances (see online supplementary appendix). RV sequences from this study have been deposited in GenBank under the accession numbers KP736530-KP737279 and KR045604.

Statistical analysis

Continuous variables were summarised as medians with IQR ranges or means with 95% CI and for categorical variables, the frequencies in each category were calculated. Demographic and clinical characteristics were compared across RV species within RV-positive symptomatic and asymptomatic adults by using risk ratio and/or X^2 tests for categorical variables and the non-parametric Kruskal-Wallis test, Mann-Whitney U test or independent t-test or one-way analysis of variance when appropriate for continuous variables. Correction for possible confounders (age, sex, geographical location, sample season and sample year) was performed using multivariable linear or logistic regression for continuous or binary outcome measures, respectively. The statistical analyses were conducted in the IBM SPSS Statistics software V.25 for Windows (IBM). A two sided $p < 0.05$ was considered statistically significant.

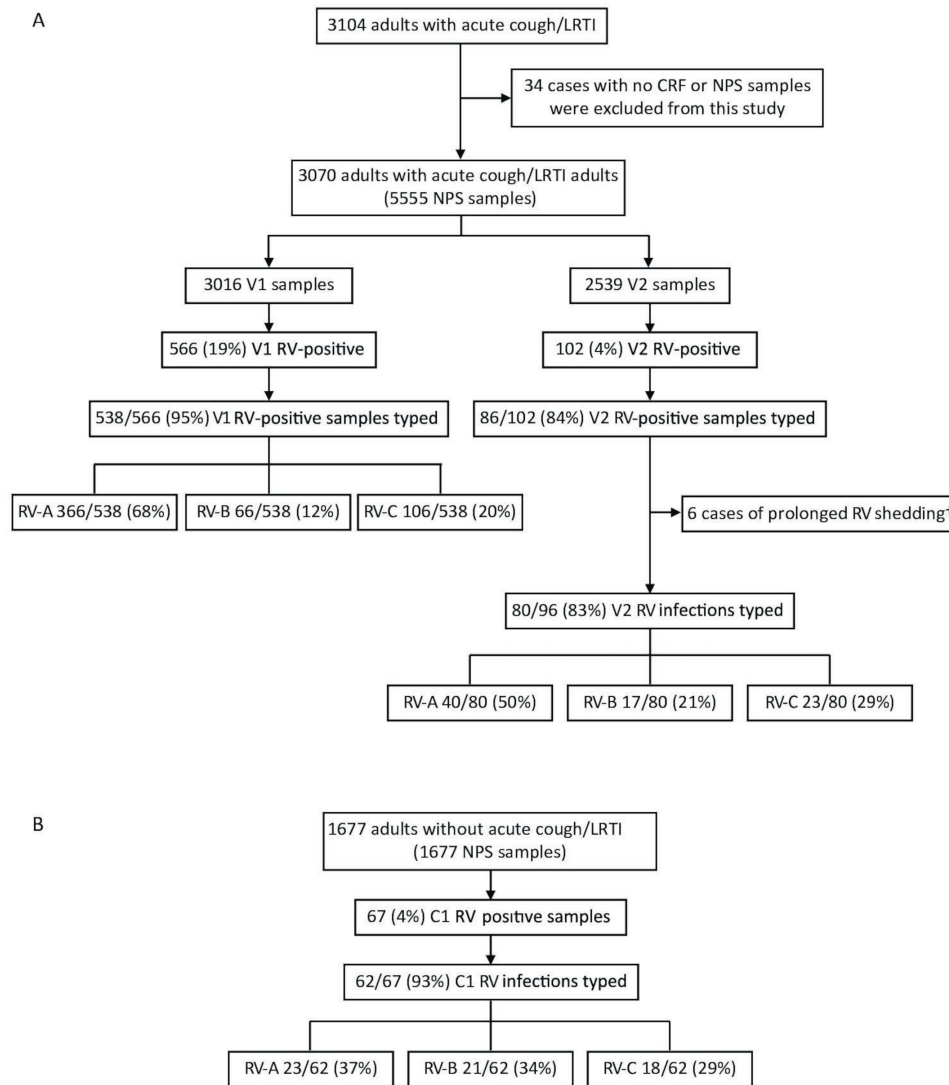


Figure 1 Rhinovirus prevalence and species distribution among (A) adults enrolled with acute cough/ LRTI and asymptomatic (B) controls. CRF, case report form; LRTI, lower respiratory tract infection; NPS, nasopharyngeal swab; RV, rhinovirus. †Prolonged rhinovirus shedding was identified in 6 patients.

RESULTS

RV detection and species distribution

In this study, 3070 (99%) (median age 50, (IQR 36–63 years); male/female ratio 1:1.5) of 3104 recruited adults with acute cough/LRTI and 1677 asymptomatic controls (median age 50, (IQR 35–62 years); male/female ratio 1:1.5) were included. Thirty-four patients with no available NPS material or CRF were excluded (figure 1). NPS samples were obtained from 3016 symptomatic patients during the first visit (V1) to the GP and a follow-up (V2) sample was collected from 2485 (82%) of these patients.²⁰ For 54 symptomatic patients, only a follow-up NPS was available for testing, resulting in a total of 2539 V2 NPS specimens. Of the asymptomatic controls 1677 samples were tested. Of the 3104 symptomatic patients 1844 (60%) tested positive for a respiratory pathogen, of which 350 (11%) a bacterial pathogen only, 1190 (39%) a respiratory virus and 304 (10%) a double infection. Of the 1677 asymptomatic controls, 205 (12%) had an respiratory virus as previously reported by Ieven *et al.*¹⁹

RV was detected in 766 out of 7232 samples (11%) and genotyping was successful for 717 (94%) of these samples.

Enteroviruses, including 13 EV-D68, 10 EV-C104, 5 EV-C105, 2 EV-C117 types and 1 EV-C (non-typeable), were identified due to cross-reactivity in our diagnostic RV assay. These 31 EV-positive samples were excluded from further analysis. Forty-nine (6%) RV-positive samples with lower viral loads inferred from quantification cycle (Cq) values could not be genotyped due to amplification failure in the genotyping PCR (median Cq values of 29 vs 36 in the diagnostic RT-PCR assay for genotyped and not-genotyped samples, respectively; $p < 0.001$).

RV was detected in 566 (19%) V1 and 102 (4%) V2 samples from case patients (of which 21 were positive in both the V1 and V2 samples) and in 67 (4%) C1 samples from asymptomatic control patients.²⁰ Of the 735 RV infection episodes, 182 (25%) were coinfections, of which 68 (9%) with another virus, 103 (14%) with a bacterial coinfection and 11 (2%) had an RV infection with at least two other pathogens. Commensals and *Candida species* were not considered causative pathogens and were excluded from the analysis.

Symptomatic (V1 positive) RV-positive patients tended to be older than asymptomatic patients (median 47 years, (IQR 33–60 years) vs median 38 years (IQR 27–58 years); $p = 0.058$,

Table 1 Demographics of symptomatic (V1) vs asymptomatic (C1) RV-positive patients

	Total n=633	RV +V1 n=566	RV +C1 n=67	P value
Male (%)	263 (42)	229 (40)	34 (51)	0.106
Age (median, IQR)	47 (32–60)	47 (33–60)	38 (27–58)	0.058
Ethical background (%)	563			
Caucasian		540 (96)		
African		8 (1)		
Asian		10 (2)		
Other		5 (1)		
Study site (%)				0.281
Antwerp BE	95 (15)	85 (15)	10 (15)	
Barcelona SP	66 (10)	64 (11)	2 (3)	
Bialystok PL	28 (4)	24 (4)	4 (6)	
Bratislava SL	30 (5)	29 (5)	1 (1)	
Cardiff GB	64 (10)	57 (10)	7 (10)	
Ghent BE	25 (4)	20 (4)	5 (7)	
Jesenice SVN	10 (2)	10 (2)	0 (0)	
Jonkoping SW	8 (1)	7 (1)	1 (1)	
Lodz PL	52 (8)	47 (8)	5 (7)	
Mataró SP	79 (12)	68 (12)	11 (16)	
Milan IT	7 (3)	17 (3)	0 (0)	
Nice FR	3 (0.5)	3 (1)	0 (0)	
Rotenberg DU	27 (4)	25 (4)	2 (3)	
Southampton GB	43 (7)	39 (7)	4 (6)	
Szczecin PL	27 (4)	22 (4)	5 (7)	
Utrecht NL	59 (9)	49 (9)	10 (15)	
Sample season and year (%)	632	565	67	0.918*
Autumn 07	37 (6)	34 (6)	3 (4)	
Winter 07/08	49 (8)	43 (8)	6 (9)	
Spring 08	73 (12)	67 (12)	6 (9)	
Summer 08	4 (1)	4 (1)	0 (0)	
Autumn 08	118 (19)	106 (19)	12 (18)	
Winter 08/09	64 (10)	55 (10)	9 (13)	
Spring 09	44 (7)	40 (7)	4 (6)	
Summer 09	4 (1)	4 (1)	0 (0)	
Autumn 09	131 (37)	118 (21)	13 (19)	
Winter 09/10	77 (12)	69 (12)	8 (12)	
Spring 10	31 (5)	25 (4)	6 (9)	
Underlying condition (%)		238/563 (42)		
Asthma		67/563 (12)		
COPD		41/563 (7)		
Other respiratory comorbidities		7/563 (1)		
History of hospitalisation for respiratory illness		24/563 (4)		
Cardiac disease		47/563 (8)		
Diabetes		35/562 (6)		
Allergic diseases		105/563 (23)		

*Overall sample season and year, symptomatic (V1) vs asymptomatic (C1). COPD, chronic obstructive pulmonary disease; RV, rhinovirus.

respectively), see [table 1](#). No significant differences were found in sex, location and sample season and year between RV-positive symptomatic and asymptomatic adults. Of 563 of the 566 V1

patients underlying conditions were stated: 238 (42%) had an underlying condition, including 122 (51%) with respiratory comorbidities or history of hospitalisation for respiratory illness. Mixed infections within the RV-positive adults (V1) were associated with symptomatic disease more often (29% vs 7% in the asymptomatic patients, RR 4.9 (95% CI 2.0 to 11.8) $p < 0.001$, adjusted for age, sex, geographical location, sample season, sample year and viral load). Mixed infections were not included in further analyses. The RV-viral load was lower in the RV-positive asymptomatic controls (mean Cq value 31 vs 28 in patients, $p < 0.001$, adjusted for age, sex, geographical location, sample season, sample year and mixed infections).

Virus genotyping to RV species level was successful in 538 (95%) V1, 86 (84%) V2 RV-positive samples from symptomatic patients and in 62 (93%) C1 control subjects. The number and proportion of RV species among symptomatic, follow-up and asymptomatic infections are shown in [figure 1](#). Prolonged RV shedding in symptomatic patients (V1) was identified in six patients as previously described.²⁰ RV reinfection with another RV type was identified in 11 symptomatic (V1) patients.

Clinical manifestations

Complete clinical record forms and symptom diaries were available for 563 (99.5%) and 383 (67.7%) RV-positive symptomatic V1 patients, respectively. Age and sex characteristics of symptomatic and asymptomatic subjects, infection outcome, viral loads inferred from Cq values and duration and severity of disease were compared across RV species ([table 2](#)). The age and sex distribution was similar across RV-species in the symptomatic and control groups. In 538 RV-infected symptomatic patients the proportion of RV-A infections was 68% vs 12% for RV-B and 20% for RV-C infections. In contrast, in the 62 asymptomatic infections the proportions were similar: RV-A: 37%, RV-B: 34% and RV-C: 29% ([figure 1](#)). For single infections RV-A was 4.5 and 2.2 times more often associated with a LRTI outcome than RV-B ($p < 0.001$) and RV-C ($p = 0.010$), respectively, and RV-C more often than RV-B (RR 2.1, $p = 0.015$). The results were similar for RV coinfecting cases. In symptomatic patients with a RV mono-infection RV-A viral loads (mean Cq=27) were significantly higher than RV-B viral loads (mean Cq=30, $p = 0.015$). The duration, overall disease severity, and maximum daily symptom score were similar between RV species. The severity of the individual symptoms was also compared across RV species ([table 3](#)). Significant differences were observed only for ‘feeling generally unwell’. In particular RV-A infected patients generally felt worse than those with RV-C ($p = 0.023$). No other significant differences were observed between RV-A and RV-B, or RV-C and RV-B infected patients.

RV prevalence and species distribution according to site and year of detection

The number of tested NPS samples, RV detection rate and species distribution among the 16 sites in Europe over the 3 years study period are presented in [figure 2](#). The majority of subjects were recruited in the months October to April and years were defined from July until June of the following year. No patients were recruited from Nice, Bialystok, Szczecin, Bratislava and Jesenice during 2007/2008 and only 9 samples from six patients were available from Milan for 2009/2010. RV accounted for 1% up to 21% of respiratory infections per site during a particular year, when excluding Milan during 2009/2010, because of the low number of included cases.

Table 2 Age and sex distribution, infection outcome and disease severity according to rhinovirus species

Characteristics*	RV-A	RV-B	RV-C	RR (95% CI)	P value
Age/sex -V1 infections					
No of cases	366	66	106		
Median (IQR) years	47 (33–60)	43 (30–61)	50 (33–62)		0.571
No (%) of male	155 (42)	22 (33)	43 (41)		0.389
Age/sex -C1 infections					
No of cases	23	21	18		
Median (IQR) years	37 (25–53)	36 (28–51)	50 (30–61)		0.472
No (%) of male	13 (57)	9 (43)	10 (56)		0.613
Symptomatic (V1) vs asymptomatic (C1) infections	366 (94)/23 (6)	66 (76)/21 (24)	106 (85)/18 (15)	RV-A vs RV-B: RR 4.6 (2.7 to 8.0)	RV-A vs RV-B (<0.001)†
No (%) of V1/C1 cases				RV-A vs RV-C: RR 2.4 (1.4 to 4.3) RV-C vs RV-B: RR 1.9 (1.1 to 3.4)	RV-A vs RV-C (0.003)† RV-C vs RV-B (0.026)†
Symptomatic (V1) vs asymptomatic (C1) single infections	261 (92)/22 (8)	43 (70)/18 (32)	80 (82)/17 (18)	RV-A vs RV-B: RR 4.5 (2.5 to 7.9)	RV-A vs RV-B (<0.001)†
No (%) of V1/C1 cases				RV-A vs RV-C: RR 2.2 (1.2 to 3.9) RV-C vs RV-B: RR 2.1 (1.1 to 3.7)	RV-A vs RV-C (0.010)† RV-C vs RV-B (0.015)†
Cq values- V1 single infections Mean (95% CI)	27 (27 to 28)	30 (28 to 31)	27 (26 to 29)		0.053 RV-A vs RV-B (0.015)† RV-A vs RV-C (0.780)† RV-C vs RV-B (0.068)†
Cq values- C1 single infections Mean (95% CI)	31 (29 to 33)	32 (30 to 33)	31 (29 to 32)		0.838† RV-A vs RV-B (0.922)† RV-A vs RV-C (0.576)† RV-C vs RV-B (0.642)†
Initial symptom score‡					
No of cases	260	43	80		0.697† RV-A vs RV-B (0.426)† RV-A vs RV-C (0.666)† RV-C vs RV-B (0.684)†
Median (IQR)	1.6 (1.1–2.0)	1.4 (0.9–2.1)	1.4 (1.1–1.9)		
Duration of illness					
No of cases	200	31	62		0.987† RV-A vs RV-B (0.893)† RV-A vs RV-C (0.948)† RV-C vs RV-B (0.870)†
Median (IQR) days	21 (14–31)	20 (13–31)	19 (13–32)		
Maximal daily symptom scores§					
No of cases	200	31	62		0.426† RV-A vs RV-B (0.216)† RV-A vs RV-C (0.519)† RV-C vs RV-B (0.499)†
Median (IQR)	2.3 (1.6–3.1)	2.0 (1.3–3.1)	2.2 (1.5–3.0)		
Duration of higher symptom score					
No of cases	158	23	48		0.942† RV-A vs RV-B (0.985)† RV-A vs RV-C (0.740)† RV-C vs RV-B (0.842)†
Median (IQR) days	4 (3–7)	4 (2–7)	3 (2–6)		

*Characteristics related to disease severity and duration of illness were evaluated only for patients with rhinovirus single infections who had complete case report forms or/and symptom diaries.

†Corrected for age, sex, sample season and sample year.

‡Initial symptom score scale: 1=no problem, 2=mild problem, 3=moderate problem, 4=severe problem.

§Maximal daily symptom score scale: 0=no problem/not affected, 1=very little problem, 2=slight problem, 3=moderately bad, 4=bad, 5=very bad, 6=as bad as it could be.

Cq, cycle of quantification; RR, relative risk; RV, rhinovirus.

RV type identification

Of the 686 sequenced RVs, 654 (95%) were characterised by partial VP3/VP1 or/and VP4/VP2 sequencing and 32 (5%) based only on the 5'-UTR (see online supplementary appendix). The latter were assigned only to species taxa level, because of limited phylogenetic discrimination in the 5'-UTR region. Four VP4/VP2 sequences were classified only to species level based on BLASTn results due to poor sequence quality. A total of 650 RV sequences were assigned to 73 RV-A, 25 RV-B and 42 RV-C types representing 91%, 78% and 76%,¹¹ respectively, of the currently established types within each species (figure 3). Five new RV types were identified and assigned by the *Picornaviridae*

study group as RV-A type A109, RV-B types B105 and B106 and RV-C types C52 and C53.

DISCUSSION

In our study, RV was detected in 19% of adults with acute cough/LRTI and in 4% of follow-up samples as well as samples from asymptomatic controls. The overall annual prevalence ranged from 1% to 21% between and within communities. These data indicate that the burden of RV associated illness varies substantially within and between communities in different years. Several other studies have reported rates of RV infection from 7% to 33% in inpatient and outpatient adults with acute LRTI or

Table 3 Frequency and severity of symptoms in adults with rhinovirus associated acute cough/LRTI

Characteristics	No (%) of events (absent-mild/moderate-severe)*			P value†
	RV-A n=261	RV-B n=43	RV-C n=80	
Cough	1 (0.4)/260 (99.6)	1 (2)/42 (98)	1 (1)/79 (99)	RV-A vs RV-B (0.053) RV-A vs RV-C (0.400) RV-B vs RV-C (0.180)
Phlegm	131 (50)/130 (50)	22 (51)/21 (49)	48 (60)/32 (40)	RV-A vs RV-B (0.739) RV-A vs RV-C (0.091) RV-B vs RV-C (0.397)
Shortness of breath	171 (66)/90 (34)	27 (63)/16 (37)	55 (69)/25 (31)	RV-A vs RV-B (0.549) RV-A vs RV-C (0.578) RV-B vs RV-C (0.371)
Wheeze	199 (76)/62 (24)	32 (74)/11 (26)	64 (80)/16 (20)	RV-A vs RV-B (0.798) RV-A vs RV-C (0.606) RV-B vs RV-C (0.566)
Running nose	109 (42)/152 (58)	21 (49)/22 (51)	37 (46)/43 (54)	RV-A vs RV-B (0.306) RV-A vs RV-C (0.667) RV-B vs RV-C (0.545)
Fever	226 (87)/35 (13)	38 (88)/5 (12)	69 (86)/11 (14)	RV-A vs RV-B (0.958) RV-A vs RV-C (0.883) RV-B vs RV-C (0.962)
Chest pain	205 (79)/56 (21)	32 (74)/11 (26)	60 (75)/20 (25)	RV-A vs RV-B (0.352) RV-A vs RV-C (0.534) RV-B vs RV-C (0.690)
Muscle aching	189 (72)/72 (28)	32 (74)/11 (26)	58 (73)/22 (27)	RV-A vs RV-B (0.662) RV-A vs RV-C (0.990) RV-B vs RV-C (0.708)
Headache	181 (69)/80 (31)	25 (58)/18 (42)	55 (69)/25 (31)	RV-A vs RV-B (0.287) RV-A vs RV-C (0.996) RV-B vs RV-C (0.361)
Disturbed sleep	141 (54)/120 (46)	25 (58)/18 (42)	38 (48)/42 (52)	RV-A vs RV-B (0.428) RV-A vs RV-C (0.259) RV-B vs RV-C (0.150)
Diarrhoea	256 (98)/5 (2)	41 (95)/2 (5)	78 (98)/2 (2)	RV-A vs RV-B (0.087) RV-A vs RV-C (0.744) RV-B vs RV-C (0.225)
Confusion/ disorientation	257 (98)/4 (2)	43 (100)/0	79 (99)/1 (1)	RV-A vs RV-B (0.999) RV-A vs RV-C (0.999) RV-B vs RV-C (0.999)
Interference with normal activities	156 (60)/105 (40)	23(53)/20 (47)	54 (68)/26 (33)	RV-A vs RV-B (0.364) RV-A vs RV-C (0.281) RV-B vs RV-C (0.130)
Feeling generally unwell	118 (45)/143 (55)	22 (51)/21(49)	49 (61)/31 (39)	RV-A vs RV-B (0.442) RV-A vs RV-C (0.023) RV-B vs RV-C (0.392)

*The presence and severity of symptoms were evaluated only for patients with rhinovirus single infections.

†Corrected for age, sex, sample season and sample year.

LRTI, lower respiratory tract infection; RV, rhinovirus.

influenza-like illness,^{15 22–25} and in 8% or less of asymptomatic adults.^{3 4 15 26}

RV species were identified with a different frequency among symptomatic and control subjects. With 68% prevalence RV-A strains were significantly more common in RV infected

symptomatic patients than RV-B (12%) or RV-C (20%) strains. In contrast, the prevalence of RV-A (37%), RV-B (34%) and RV-C (29%) was more or less similar in asymptomatic infections, suggesting a more pathogenic role of RV-A infections. Also, RV-A was 4.5 and 2.2 times more often associated with LRTI

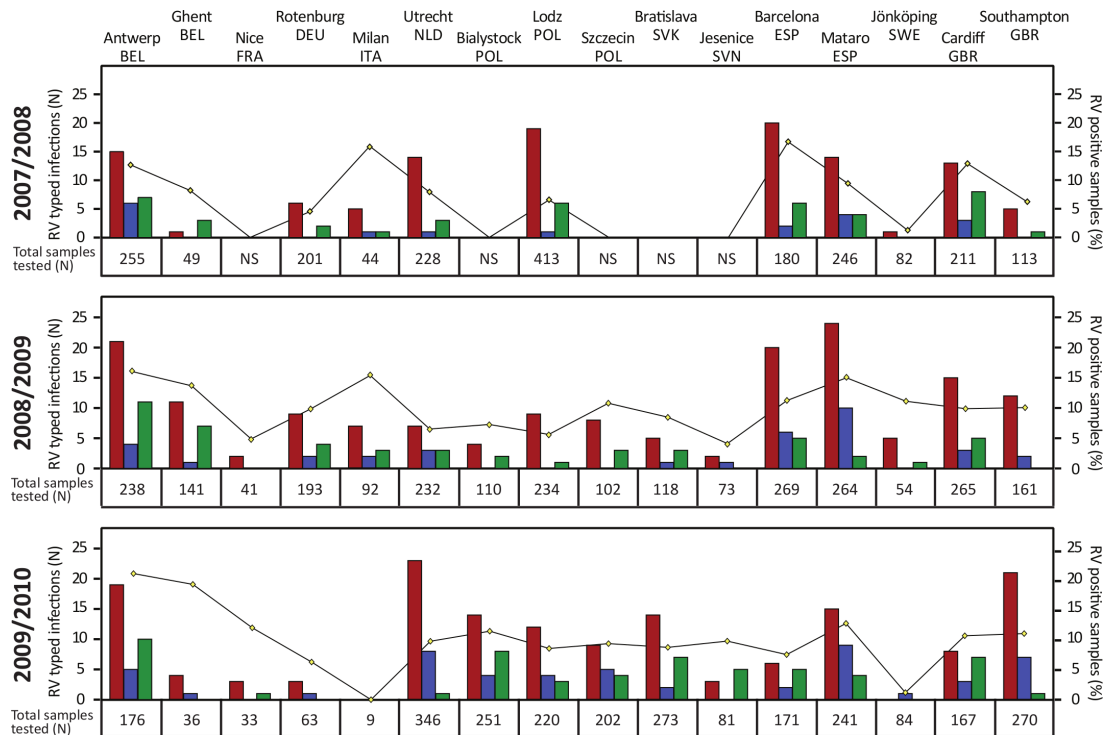


Figure 2 Rhinovirus (RV) detection rate and species distribution according to site and year of detection. Total numbers of tested samples per location and year of isolation are presented under the corresponding country panel; 'NS' designates that no samples were available. Plot lines represent the proportion (%) of RV infections (right side y-axis) and bar graphs represent the number of RV-A (red), RV-B (blue) and RV-C (green) infections (left side y-axis). Country abbreviations: BEL (Belgium), FRA (France), DEU (Germany), ITA (Italy), NLD (Netherlands), POL (Poland), SVK (Slovakia), SVN (Slovenia), ESP (Spain), SWE (Sweden), GBR (United Kingdom).

than RV-B and RV-C ($p \leq 0.010$), and RV-C 2.1 times more often than RV-B ($p = 0.015$).

Our findings indicate that in adults, the prevalence of RV-A-associated LRTI is considerably higher than that of RV-B and RV-C, while RV-B infections are more often asymptomatic. The latter observation is further supported by the fact that RV-B has been detected infrequently in children and adults hospitalised for severe respiratory illness.^{15 17 27–31} Furthermore RV-B symptomatic infections had significantly lower viral loads than RV-A symptomatic infections, suggesting lower pathogenicity of RV-B viruses. Lower viral loads of RV-B relative to RV-A and RV-C in respiratory specimens have previously been reported for adults with pneumonia³² and viral load has been reported as indicator for severity of RV infections.³ These findings are in agreement with the *in vitro* study that demonstrated that RV-B types replicate less efficiently and induce lower cytokines and/or chemokine levels than RV-A or RV-C infections.³³

Our results on RV species distribution (RV-A > RV-C > RV-B) among adults with LRTI are consistent with those from a study conducted in Seoul among adults with pneumonia.³² Other studies in symptomatic patients found a lower prevalence of RV-C than RV-B infections.^{34 35} These differences in the relative proportions of RV species in comparison to our findings could be due to differences in the study populations (eg, upper respiratory tract infection (URTI) instead of LRTI) and annual variations in species distribution. We observed no significant differences between RV species in the duration of illness, maximum symptom scores, overall disease severity and severity of individual common cold symptoms. However, RV-A infected patients subjectively felt in general worse than those infected with RV-C. Our results suggest that RV-A infections have a more debilitating impact on the general health as compared with RV-B

and RV-C infections. In children several studies demonstrated an association between RV-C and more serious respiratory illness.^{13 22 28} In adult patients RV-C infection has been reported to cause more frequent acute RTI and appeared more severe as compared with children.^{22 36} Other studies in adults observed no differences in disease severity between RV species,^{15 16 26 32 37} though one study found a higher disease severity associated with RV-A in upper respiratory symptoms.³⁵ However, these studies are limited due to the short surveillance periods, lack of asymptomatic controls and small sample size. It must be noted that the patients included in this study had per definition acute cough/LRTI, thus differences in disease severity between RV species in patients with milder symptoms cannot be excluded.

RV-A was the most prevalent species in the majority of study locations, followed by RV-C, while RV-B occurrence varied considerably between and within certain communities. Substantial antigenic variation within RV-A could lead to more frequent reinfections in the community and to a higher overall prevalence. Interestingly, not all RV species were identified in the separate locations during the study period. Genotyping of the RV samples lead to the discovery of 5 novel RV types and revealed a remarkably high diversity of RVs represented by 73 RV-A, 25 RV-B and 42 RV-C types. Asymptomatic infections were associated with a variety of RV types, the majority of which were also identified in symptomatic cases.

Although comprehensive, this study has some limitations. Due to the heterogeneity of the RV genomes, our RV diagnostic and genotyping assays might have varied in efficacy of amplification, and therefore, be suboptimal for some genotypes. In particular, RV-C infections might be somewhat underrepresented, since a limited number of RV-C complete genome sequences were available at the time our diagnostic assay was developed.

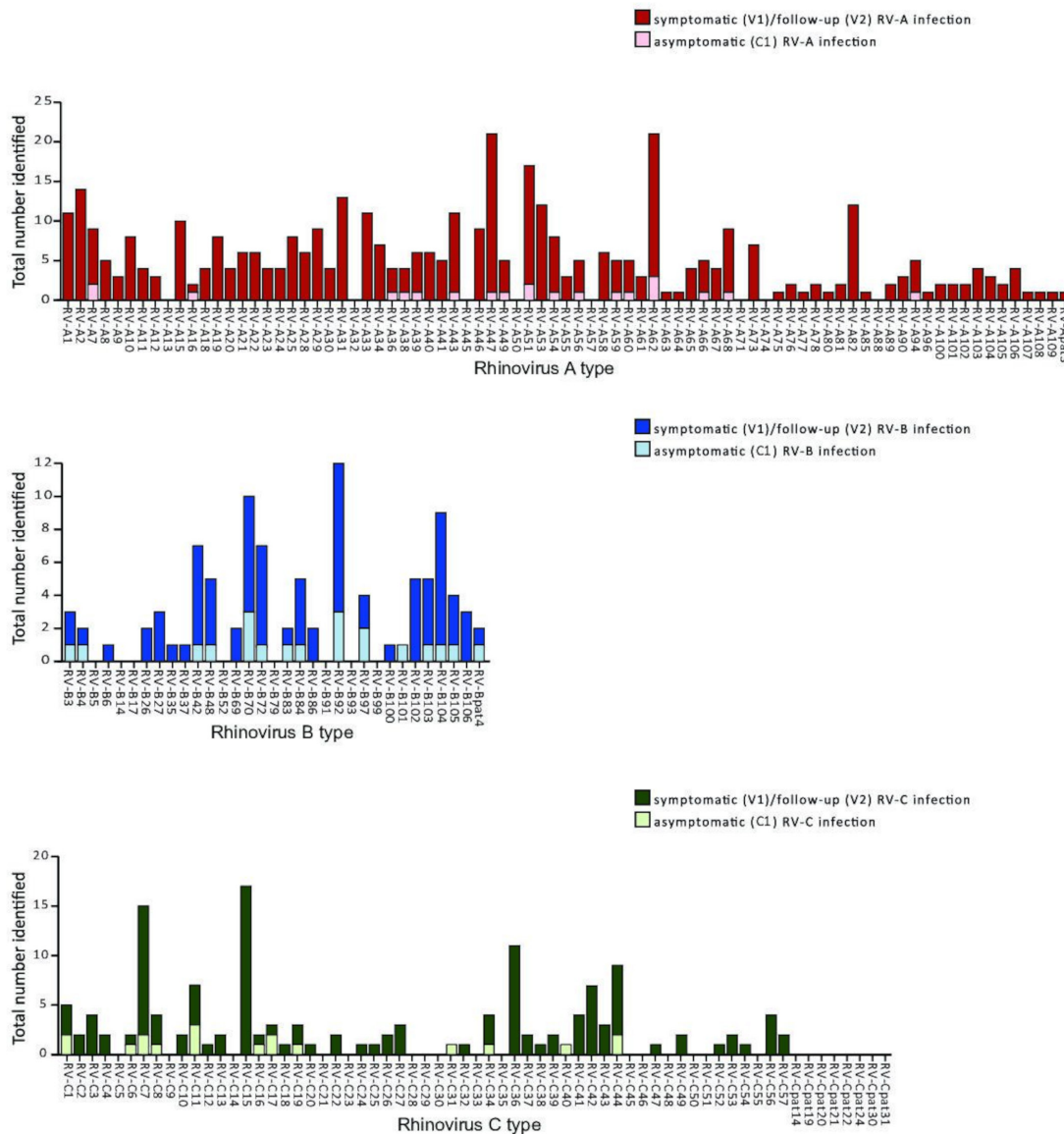


Figure 3 Frequencies of rhinovirus types identified in symptomatic case and asymptomatic control adults.

In addition, due to the nature of this study, only associations can be found, and no causality can be proven. With the current study design, an association can be made between RV type and disease severity. However, the population studied, is patients visiting their GP that in general will be older and have more comorbidities as compared with the general population. Nevertheless, these are the patients consulting their GP, and therefore, this study is very representative for clinical practice.

Although limited, some CRF's were missing and not all RV positive samples could be typed. Because these numbers are limited a link between the missing data and disease severity is not expected and this probably will not result in a bias.

Finally, the clinical status of cases with RV-positive follow-up samples could not be clearly defined, since symptom manifestations were not recorded by the GP at the time of the second visit.

This is a very comprehensive study, in which RV typing has been performed in symptomatic (LRTI) and asymptomatic adult GP patients in 11 countries. RV typing is not part of standard diagnostic care and our results do not provide an indication for an added value in relation to disease severity. This may change

in the future if subtype differences in efficacy are observed following antiviral treatment or vaccination.

In conclusion, LRTI in adults were mainly associated with RV-A, identified in a significantly higher proportion of symptomatic than asymptomatic subjects as compared with RV-B and RV-C. Furthermore RV-A symptomatic infections were associated with significantly higher viral loads than RV-B symptomatic infections, suggesting lower pathogenicity of RV-B.

Author affiliations

¹Medical Microbiology, Leiden Universitair Medisch Centrum, Leiden, The Netherlands

²Infection and Immunity Division, University of Edinburgh, Edinburgh, UK

³Department of Medical Microbiology, University Medical Center Utrecht, Utrecht, The Netherlands

⁴Department of Data Management, Julius Center for Health Sciences and Primary Care, University Medical Center Utrecht, Utrecht, The Netherlands

⁵Primary Care and Population Science, University of Southampton, Southampton, UK

⁶Nuffield Department of Primary Care Sciences, Oxford University, Oxford, UK

⁷Department of Medical Statistics, Leiden University Medical Center, Leiden, The Netherlands

⁸Department of Medical Microbiology, Vaccine & Infectious Diseases Institute (VAXINFECTIO), University of Antwerp, Antwerp, Belgium

Acknowledgements We thank all involved in the GRACE Primary Care Network for the opportunity to conduct this study, Stefan van Nieuwkoop, Naim Farzad, Yuvia Guilarte, Iris Hidding, Lisette Rusman, Margriet Kraakman and Mario van Busse (Department of Medical Microbiology, LUMC, Leiden, The Netherlands) for technical assistance with virus genotyping, and Susan Hemert-Glaubit (Julius Center of Health Sciences and Primary Care, UMC, Utrecht, The Netherlands) for assistance with the GRACE database.

Funding This study was funded by the of the European Commission's FP6 Programme under grant number LSHM-CT-2005-5 18 226 and the Department of Medical Microbiology, Leiden University Medical Centre, the Netherlands.

Competing interests None declared.

Patient consent for publication Not required.

Provenance and peer review Not commissioned; externally peer reviewed.

Data availability statement Data are available on reasonable request. RV sequences from this study have been deposited in GenBank under the accession numbers KP736530-KP737279 and KR045604.

Open access This is an open access article distributed in accordance with the Creative Commons Attribution Non Commercial (CC BY-NC 4.0) license, which permits others to distribute, remix, adapt, build upon this work non-commercially, and license their derivative works on different terms, provided the original work is properly cited, appropriate credit is given, any changes made indicated, and the use is non-commercial. See: <http://creativecommons.org/licenses/by-nc/4.0/>.

ORCID iDs

Anneloes L van Rijn <http://orcid.org/0000-0002-0551-5543>

Paul Little <http://orcid.org/0000-0003-3664-1873>

REFERENCES

- Heikkinen T, Järvinen A. The common cold. *Lancet* 2003;361:51–9.
- van Gageldonk-Lafeber AB, Heijnen M-LA, Bartelds AIM, et al. A case-control study of acute respiratory tract infection in general practice patients in the Netherlands. *Clin Infect Dis* 2005;41:490–7.
- Ng KT, Oong XY, Lim SH, et al. Viral load and sequence analysis reveal the symptom severity, diversity, and transmission clusters of rhinovirus infections. *Clin Infect Dis* 2018;67:261–8.
- van der Linden L, Bruning AHL, Thomas XV, et al. A molecular epidemiological perspective of rhinovirus types circulating in Amsterdam from 2007 to 2012. *Clin Microbiol Infect* 2016;22:1002.e9–14.
- Ruuskanen O, Waris M, Ramilo O. New aspects on human rhinovirus infections. *Pediatr Infect Dis J* 2013;32:553–5.
- Vandini S, Biagi C, Fischer M, et al. Impact of rhinovirus infections in children. *Viruses* 2019;11:521.
- Goffard A, Lambert V, Salleron J, et al. Virus and cystic fibrosis: rhinoviruses are associated with exacerbations in adult patients. *J Clin Virol* 2014;60:147–53.
- Wu X, Chen D, Gu X, et al. Prevalence and risk of viral infection in patients with acute exacerbation of chronic obstructive pulmonary disease: a meta-analysis. *Mol Biol Rep* 2014;41:4743–51.
- Goka EA, Vallye PJ, Mutton KJ, et al. Single, dual and multiple respiratory virus infections and risk of hospitalization and mortality. *Epidemiol Infect* 2015;143:1–11.
- Honkinen M, Lahti E, Österback R, et al. Viruses and bacteria in sputum samples of children with community-acquired pneumonia. *Clin Microbiol Infect* 2012;18:300–7.
- ICTV. Genus: enterovirus. Available: https://talk.ictvonline.org/ictv-reports/ictv_online_report/positive-sense-rna-viruses/picornavirales/w/picornaviridae/681/genus-enterovirus [Accessed 25 Jul 2019].
- Lau SKP, Yip CCY, Tsoi H-W, et al. Clinical features and complete genome characterization of a distinct human rhinovirus (HRV) genetic cluster, probably representing a previously undetected HRV species, HRV-C, associated with acute respiratory illness in children. *J Clin Microbiol* 2007;45:3655–64.
- Piralla A, Rovida F, Campanini G, et al. Clinical severity and molecular typing of human rhinovirus C strains during a fall outbreak affecting hospitalized patients. *J Clin Virol* 2009;45:311–7.
- Hasegawa K, Mansbach JM, Bochkov YA, et al. Association of rhinovirus C bronchiolitis and immunoglobulin E sensitization during infancy with development of recurrent wheeze. *JAMA Pediatr* 2019;173:544.
- Fry AM, Lu X, Olsen SJ, et al. Human rhinovirus infections in rural Thailand: epidemiological evidence for rhinovirus as both pathogen and bystander. *PLoS One* 2011;6:e17780.
- Henquell C, Mirand A, Deusebis A-L, et al. Prospective genotyping of human rhinoviruses in children and adults during the winter of 2009–2010. *J Clin Virol* 2012;53:280–4.
- Iwane MK, Prill MM, Lu X, et al. Human rhinovirus species associated with hospitalizations for acute respiratory illness in young US children. *J Infect Dis* 2011;204:1702–10.
- Ren L, Yang D, Ren X, et al. Genotyping of human rhinovirus in adult patients with acute respiratory infections identified predominant infections of genotype A21. *Sci Rep* 2017;7:41601.
- Ieven M, Coenen S, Loens K, et al. Aetiology of lower respiratory tract infection in adults in primary care: a prospective study in 11 European countries. *Clin Microbiol Infect* 2018;24:1158–63.
- Zlateva KT, de Vries JJC, Coenjaerts FEJ, et al. Prolonged shedding of rhinovirus and re-infection in adults with respiratory tract illness. *Eur Respir J* 2014;44:169–77.
- Loens K, van Loon AM, Coenjaerts F, et al. Performance of different mono- and multiplex nucleic acid amplification tests on a multipathogen external quality assessment panel. *J Clin Microbiol* 2012;50:977–87.
- Lau SKP, Yip CCY, Lin AWC, et al. Clinical and molecular epidemiology of human rhinovirus C in children and adults in Hong Kong reveals a possible distinct human rhinovirus C subgroup. *J Infect Dis* 2009;200:1096–103.
- Templeton KE, Scheltinga SA, van den Eeden WCJFM, et al. Improved diagnosis of the etiology of community-acquired pneumonia with real-time polymerase chain reaction. *Clin Infect Dis* 2005;41:345–51.
- Pierangeli A, Scagnolari C, Selvaggi C, et al. Rhinovirus frequently detected in elderly adults attending an emergency department. *J Med Virol* 2011;83:2043–7.
- Creer DD, Dilworth JP, Gillespie SH, et al. Aetiological role of viral and bacterial infections in acute adult lower respiratory tract infection (LRTI) in primary care. *Thorax* 2006;61:75–9.
- Granados A, Goodall EC, Luinstra K, et al. Comparison of asymptomatic and symptomatic rhinovirus infections in university students: incidence, species diversity, and viral load. *Diagn Microbiol Infect Dis* 2015;82:292–6.
- Lee W-M, Lemanske RF, Evans MD, et al. Human rhinovirus species and season of infection determine illness severity. *Am J Respir Crit Care Med* 2012;186:886–91.
- Linsuwanon P, Payungporn S, Samransamruajit R, et al. High prevalence of human rhinovirus C infection in Thai children with acute lower respiratory tract disease. *J Infect* 2009;59:115–21.
- Miller EK, Khuri-Bulos N, Williams JV, et al. Human rhinovirus C associated with wheezing in hospitalised children in the middle East. *J Clin Virol* 2009;46:85–9.
- Hung H-M, Yang S-L, Chen C-J, et al. Molecular epidemiology and clinical features of rhinovirus infections among hospitalized patients in a medical center in Taiwan. *J Microbiol Immunol Infect* 2019;52:233–41.
- Liggett SB, Bochkov YA, Pappas T, et al. Genome sequences of rhinovirus C isolates from Wisconsin pediatric respiratory studies. *Genome Announc* 2014;2. doi:10.1128/genomeA.00203-14. [Epub ahead of print: 27 Mar 2014].
- Choi S-H, Hong S-B, Kim T, et al. Clinical and molecular characterization of rhinoviruses A, B, and C in adult patients with pneumonia. *J Clin Virol* 2015;63:70–5.
- Nakagome K, Bochkov YA, Ashraf S, et al. Effects of rhinovirus species on viral replication and cytokine production. *J Allergy Clin Immunol* 2014;134:332–41.
- Xiang Z, Gonzalez R, Wang Z, et al. Human rhinoviruses in Chinese adults with acute respiratory tract infection. *J Infect* 2010;61:289–98.
- Chen W-J, Arnold JC, Fairchok MP, et al. Epidemiologic, clinical, and virologic characteristics of human rhinovirus infection among otherwise healthy children and adults: rhinovirus among adults and children. *J Clin Virol* 2015;64:74–82.
- Wisdom A, Leitch ECM, Gaunt E, et al. Screening respiratory samples for detection of human rhinoviruses (HRVs) and enteroviruses: comprehensive VP4-VP2 typing reveals high incidence and genetic diversity of HRV species C. *J Clin Microbiol* 2009;47:3958–67.
- Pretorius MA, Tempia S, Treurnicht FK, et al. Genetic diversity and molecular epidemiology of human rhinoviruses in South Africa. *Influenza Other Respir Viruses* 2014;8:567–73.