



Universiteit
Leiden
The Netherlands

Aged human osteochondral explants as biomimetic osteoarthritis model: towards a druggable target in osteoarthritis

Houtman, E.

Citation

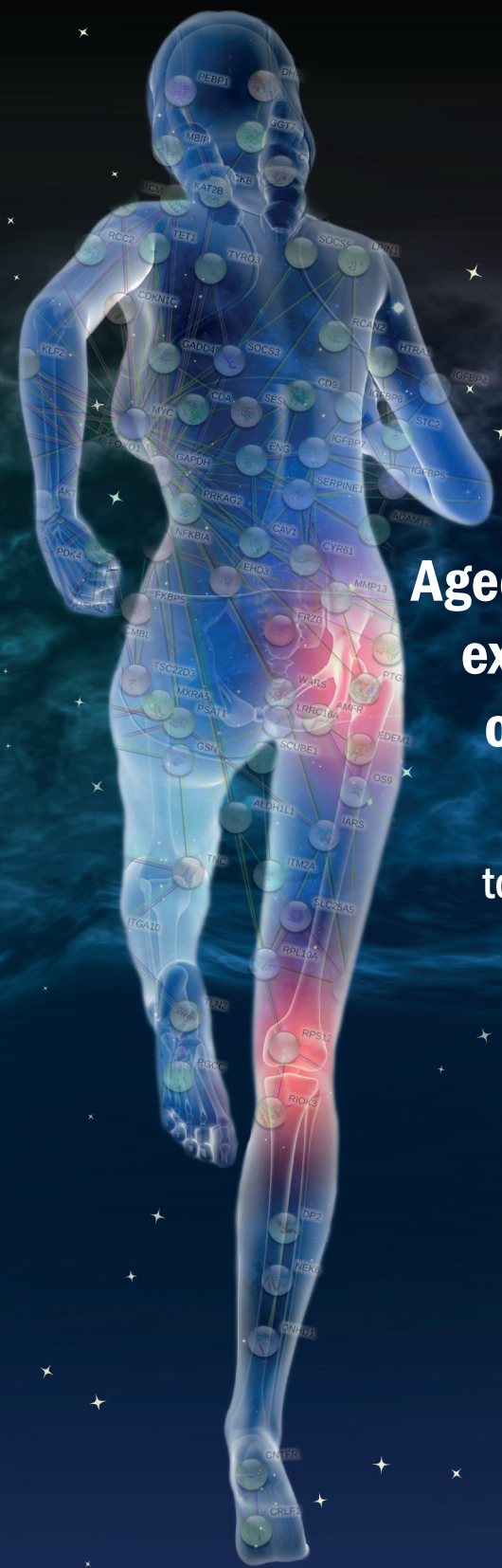
Houtman, E. (2022, October 12). *Aged human osteochondral explants as biomimetic osteoarthritis model: towards a druggable target in osteoarthritis*. Retrieved from <https://hdl.handle.net/1887/3480151>

Version: Publisher's Version

License: [Licence agreement concerning inclusion of doctoral thesis in the Institutional Repository of the University of Leiden](#)

Downloaded from: <https://hdl.handle.net/1887/3480151>

Note: To cite this publication please use the final published version (if applicable).



Aged human osteochondral explants as biomimetic osteoarthritis model

Evelyn Houtman

Aged human osteochondral explants as biomimetic osteoarthritis model:

towards a druggable target in osteoarthritis

Evelyn Houtman