



Universiteit
Leiden
The Netherlands

Aged human osteochondral explants as biomimetic osteoarthritis model: towards a druggable target in osteoarthritis

Houtman, E.

Citation

Houtman, E. (2022, October 12). *Aged human osteochondral explants as biomimetic osteoarthritis model: towards a druggable target in osteoarthritis*. Retrieved from <https://hdl.handle.net/1887/3480151>

Version: Publisher's Version

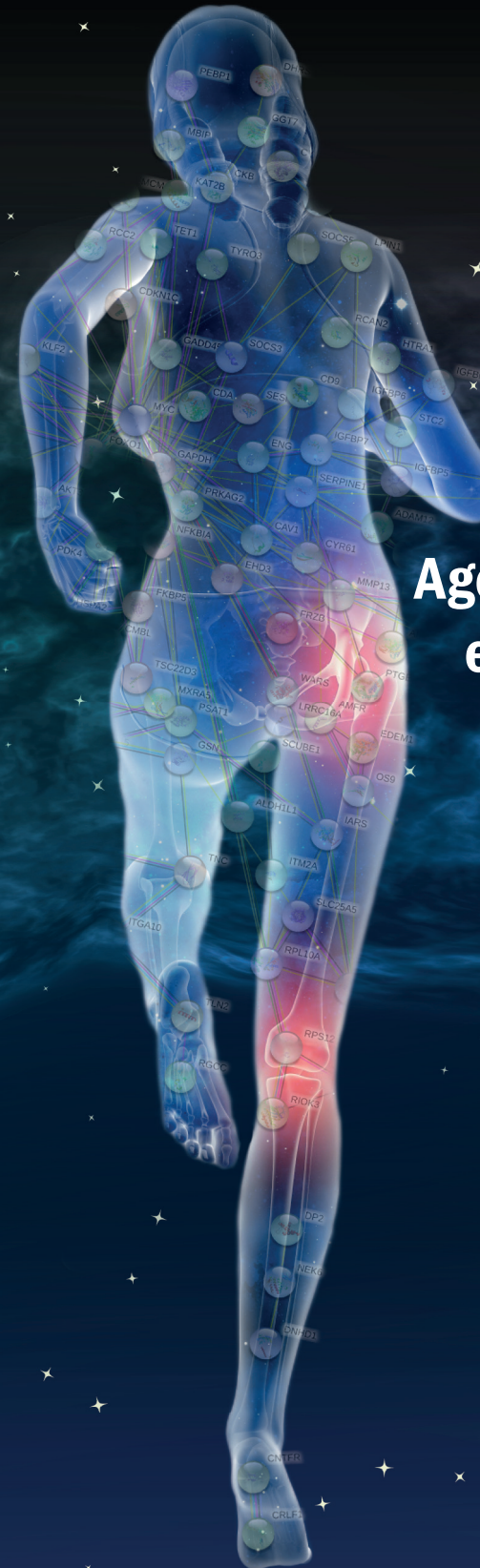
License: [Licence agreement concerning inclusion of doctoral thesis in the Institutional Repository of the University of Leiden](#)

Downloaded from: <https://hdl.handle.net/1887/3480151>

Note: To cite this publication please use the final published version (if applicable).

Aged human osteochondral explants as biomimetic osteoarthritis model

Evelyn Houtman



**Aged human osteochondral
explants as biomimetic
osteoarthritis model:**

**towards a druggable target in
osteoarthritis**

Evelyn Houtman