



Universiteit
Leiden

The Netherlands

Aortic valve disease: multimodality imaging for risk stratification and evaluation of therapy

Vollema, E.M.

Citation

Vollema, E. M. (2022, September 6). *Aortic valve disease: multimodality imaging for risk stratification and evaluation of therapy*. Retrieved from <https://hdl.handle.net/1887/3455179>

Version: Publisher's Version

License: [Licence agreement concerning inclusion of doctoral thesis in the Institutional Repository of the University of Leiden](#)

Downloaded from: <https://hdl.handle.net/1887/3455179>

Note: To cite this publication please use the final published version (if applicable).

3

INCREMENTAL VALUE OF LEFT VENTRICULAR GLOBAL LONGITUDINAL STRAIN IN A NEWLY PROPOSED STAGING CLASSIFICATION BASED ON CARDIAC DAMAGE IN PATIENTS WITH SEVERE AORTIC STENOSIS

E. Mara Vollema, Mohammed R. Amanullah, Edgard A. Prihadi,
Arnold C.T. Ng, Pieter van der Bijl, Yoong Kong Sin,
Nina Ajmone Marsan, Zee Pin Ding, Philippe Généreux, Martin B. Leon,
See Hooi Ewe, Victoria Delgado, Jeroen J. Bax

Published in Eur Heart J Cardiovasc Imaging. 2020;21(11):1248-1258.

ABSTRACT

AIMS

Cardiac damage in severe aortic stenosis (AS) can be classified according to a recently proposed staging classification. The present study investigated the incremental prognostic value of left ventricular (LV) global longitudinal strain (GLS) over stages of cardiac damage in patients with severe AS.

METHODS AND RESULTS

From an ongoing registry, a total of 616 severe symptomatic AS patients with available LV GLS by speckle tracking echocardiography were selected and retrospectively analyzed. Patients were categorized according to cardiac damage on echocardiography: Stage 0 (no damage), Stage 1 (LV damage), Stage 2 (mitral valve or left atrial damage), Stage 3 (tricuspid valve or pulmonary artery vasculature damage) or Stage 4 (right ventricular damage). LV GLS was divided by quintiles and assigned to the different stages. The endpoint was all-cause mortality. Over a median follow-up of 44 [interquartile range: 24 to 89] months, 234 (38%) patients died. LV GLS was associated with all-cause mortality independent of stage of cardiac damage. After incorporation of LV GLS by quintiles into the staging classification, Stage 2 to 4 were independently associated with outcome. LV GLS showed incremental prognostic value over clinical characteristics and stages of cardiac damage.

CONCLUSION

In this large single-center cohort of severe AS patients, incorporation of LV GLS by quintiles in a novel proposed staging classification resulted in refinement of risk stratification by identifying patients with more advanced cardiac damage. LV GLS was shown to provide incremental prognostic value over the originally proposed staging classification.

INTRODUCTION

IN severe aortic stenosis (AS), pressure overload caused by obstruction of the aortic valve leads to left ventricular (LV) hypertrophy and LV systolic dysfunction as a result of myocardial fibrosis formation [1]. However, it has been increasingly recognized that myocardial injury caused by severe AS is not limited to the LV myocardium and can negatively influence prognosis. For example, mitral [2] and tricuspid regurgitation (TR) [3] are frequently observed in severe AS patients. Furthermore, multiple studies have reported a high prevalence of right ventricular (RV) dysfunction in this patient population [4–6]. These expressions of cardiac damage can be classified according to a recently proposed staging classification, which has been shown to be strongly associated with prognosis, independent of other well-established predictors of poor outcome [7–10]. Left ventricular global longitudinal strain (GLS) evaluated by speckle tracking echocardiography has also been demonstrated to be independently associated with all-cause mortality and adverse outcomes in severe AS patients, both with preserved and impaired LV systolic function as assessed by LV ejection fraction (LVEF) [11–13]. The present study investigated the incremental prognostic value of LV GLS over a recently proposed staging classification algorithm according to cardiac damage and evaluated the prognostic implications of incorporating LV GLS in this staging classification.

METHODS

STUDY POPULATION AND DATA COLLECTION

From an ongoing registry of patients with AS from the Leiden University Medical Center, 616 patients with symptomatic severe AS and feasible analysis of LV GLS using 2-dimensional speckle tracking echocardiography at baseline (i.e., first available echocardiogram after diagnosis of symptomatic severe AS) between 2000 and 2017 were selected. As recommended by recent guidelines, severe AS was defined as a mean aortic valve gradient ≥ 40 mmHg and/or aortic valve area (AVA) < 1.0 cm² (or an indexed AVA [AVA_i] < 0.6 cm²/m²) and/or a peak aortic jet velocity ≥ 4 m/s [14–16]. All echocardiographic data were clinically acquired and prospectively analyzed by experienced observers. Exclusion criteria were previous aortic valve replacement (AVR), lack of symptoms and inadequate speckle tracking analysis due to poor acoustic windows or insufficient data. Patient demographic and clinical data (e.g., cardiovascular medication use and comorbidities) and clinical follow-up data were gathered from the departmental patient information system (EPD-Vision 11.8.4.0; Leiden University Medical Center, Leiden, The Netherlands) and hospital records (HiX; ChipSoft, Amsterdam, The Netherlands) and analyzed retrospectively. The institutional review board waived the need for patient written informed consent due to the retrospective nature of this analysis (CME 10.053).

TRANSTHORACIC ECHOCARDIOGRAPHY

Using commercially available ultrasound systems (GE-Vingmed, Horten, Norway), transthoracic echocardiograms were obtained with the patient at rest in a left lateral decubitus position. Two-dimensional color, pulsed-, and continuous-wave Doppler images were acquired as recommended and stored digitally for offline analysis (EchoPAC

version 113.0.3; GE-Vingmed, Horten, Norway) [17]. From the parasternal long-axis view, LV dimensions were evaluated and, using the Devereux's formula, LV mass was calculated and indexed for body surface area (LVMI) [17]. In the apical 2- and 4-chamber views, LV volumes were assessed and LVEF was calculated according to Simson's biplane method [17]. Left atrial (LA) volumes were measured by the biplane method of disks and indexed for body surface area [17]. For the evaluation of LV diastolic function, peak early (E) and late (A) diastolic velocities were acquired using pulsed-wave Doppler recordings of the transmitral flow [18]. To estimate LV filling pressures, the E/e' ratio was calculated incorporating the average e' as measured at both the lateral and septal mitral annulus by tissue Doppler imaging on the apical 4-chamber view [18]. From color and continuous-wave Doppler recordings, the severity of mitral and tricuspid regurgitation was graded using a multi-parametric approach, as recommended by current guidelines [19]. For the estimation of the systolic arterial pulmonary pressure (SPAP), the right atrial pressure as determined by the diameter and inspiratory collapse of the inferior vena cava was added to the RV pressure as calculated by the Bernoulli equation using the peak velocity of the tricuspid regurgitant jet [17, 20]. On the focused apical 4-chamber view of the right ventricle, the tricuspid annular plane systolic excursion (TAPSE) was measured using anatomical M-mode to evaluate the right ventricular (RV) systolic function [20]. To assess AS severity, peak aortic jet velocity was estimated using the continuous-wave Doppler data from the apical 3- or 5-chamber views [15]. Mean and peak transvalvular pressure gradients were calculated according to the Bernoulli equation [15]. Using the LV outflow tract diameter and velocity time integrals of the aortic valve and LV outflow tract, the AVA was estimated by the continuity equation and indexed for body surface area (AVAi) [15].

Using commercially available software (EchoPAC version 113.0.3; GE-Vingmed, Horten, Norway), LV GLS was measured on the apical 4-, 3- and 2-chamber views by 2-dimensional speckle tracking analysis [17]. Conventionally, LV GLS is presented as a negative value (since it represents the myocardial shortening in the longitudinal direction), but in the present study absolute values are reported [17].

DEFINITIONS PROPOSED STAGING CLASSIFICATION AND RECLASSIFICATION BY LV GLS

Patients were classified into 5 independent stages as proposed by Généreux et al. [7] based on the presence and extent of cardiac damage as evaluated on baseline transthoracic echocardiography (Figure 1): no signs of cardiac damage was categorized as Stage 0; LV damage (LV hypertrophy [LVMI >95 g/m² for women or >115 g/m² for men], LV systolic [LVEF <50%] or diastolic dysfunction [E/e' >14])[17, 18] as Stage 1; LA or mitral valve damage (LA volume index >34 ml/m², significant mitral regurgitation (MR) [MR grade ≥3] or presence of atrial fibrillation at time of baseline echocardiography)[17, 19] as Stage 2; pulmonary artery vasculature or tricuspid valve damage (severe pulmonary hypertension [SPAP >60 mmHg] or significant TR [TR grade ≥3]) [19] as Stage 3 and RV damage (RV dysfunction [TAPSE <16 mm])[20] as Stage 4. Patients were classified in the most advanced stage if criteria for more than one stage were present [7].

To incorporate LV GLS in the proposed staging classification, LV GLS was divided by quintiles and assigned to the different stages of cardiac damage as depicted in Figure 1:

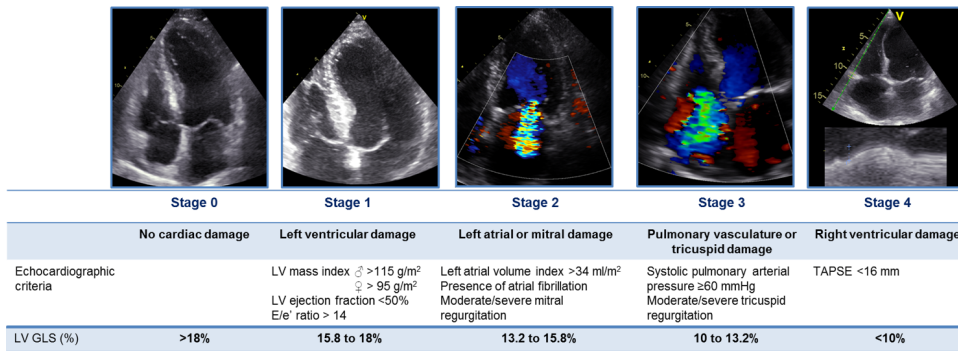


Figure 1: Proposed staging classification according to the presence and extent of cardiac damage on echocardiography with addition of LV GLS quintiles for reclassification. GLS, global longitudinal strain; LV, left ventricular; TAPSE, tricuspid annular plane systolic excursion.

LV GLS >18% for Stage 0, 15.8 to 18% for Stage 1, 13.2 to 15.8% for Stage 2, 10 to 13.2% for Stage 3 and <10% for Stage 4. Classification of stages after taking into account LV GLS was performed using the previously described approach [7]: patients were classified into the most advanced stage for which either a criterion for cardiac damage or for LV GLS was present (Figure 1).

FOLLOW-UP AND ENDPOINT

All patients were followed-up for all-cause mortality and the occurrence of AVR (either surgical or transcatheter). The primary outcome was all-cause mortality, which was obtained by review of the departmental cardiology information system (which is linked to the governmental death registry database).

STATISTICAL ANALYSIS

Continuous data are presented as mean \pm SD or median (interquartile range [IQR]), as appropriate, and were compared between patients groups as divided by stage of cardiac damage using the analysis of variance (ANOVA) test with Bonferroni's post hoc analysis or Kruskal-Wallis test when distributed normally or non-normally, respectively. Categorical data are presented as frequencies and percentages and were compared between groups using the χ^2 test. To calculate cumulative survival rates of the stages of cardiac damage, Kaplan-Meier analyses were performed. For comparison of survival rates between the different stages, the log-rank test was used. Univariable Cox proportional hazard analyses were performed to assess the association of the proposed staging classification and other relevant parameters with all-cause mortality. Statistically significant ($P<0.05$) or clinically relevant predictors from the univariable analysis were included in the multivariable model. Cox proportional hazard analyses were performed for both the proposed staging classification and after reclassification taking into account LV GLS. AVR (surgical or transcatheter) was entered into the analyses as a time-dependent covariate. Hazard ratio (HR) and 95% confidence interval (CI) were presented for all included variables. To assess the incremental prognostic value of LV GLS over the proposed staging

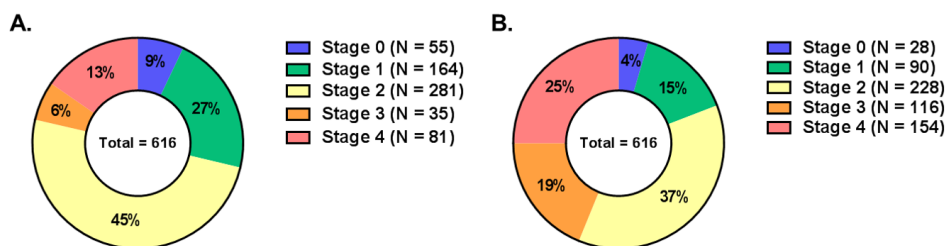


Figure 2: Distribution of stages of cardiac damage in study population according to the proposed staging classification (*panel A*) and after reclassification by incorporating LV GLS (*panel B*). GLS, global longitudinal strain; LV, left ventricular.

classification, nested regression models were constructed and changes in χ^2 value were calculated. All statistical analyses were performed on SPSS software (version 23, IBM SPSS statistics for Windows, Armonk, New York, USA) and a two-sided P value <0.05 was considered statistically significant.

RESULTS

A total of 616 symptomatic severe AS patients (mean age 75 ± 11 years, 58% male) were classified according to the proposed staging classification (Figure 1): 55 (9%) patients had no signs of cardiac damage (Stage 0), 164 (27%) patients had LV damage (Stage 1), 281 (45%) patients had LA or mitral valve damage (Stage 2), 35 (6%) patients had pulmonary vasculature or tricuspid valve damage (Stage 3) and 81 (13%) patients had RV damage (Stage 4) (Figure 2). Patients in Stages 3 and 4 were generally older, had more comorbidities (e.g., coronary artery disease, chronic obstructive pulmonary disease and atrial fibrillation), had more severe symptoms (NYHA functional class \geq III), had worse renal function, and more often used diuretic agents when compared with patients in Stages 0-2 (Table 1). Echocardiographically, patients in more advanced stages had larger diameters of both the LV and LA, had worse LVEF, more often had significant MR and TR, and more often had low-flow low-gradient AS when compared with patients in less advanced stages (Table 2). Of note, LV GLS was gradually more impaired with each increasing stage.

PROGNOSTIC VALUE OF PROPOSED STAGING CLASSIFICATION

Over a median follow-up of 44 (IQR: 24 to 89) months, 550 (89%) patients underwent AVR (49% surgical and 51% transcatheter) and 234 (38%) patients died. Of the 234 patients who died, 57 (24%) did not receive AVR. As shown in Figure 3, the Kaplan-Meier analysis demonstrated a significantly lower survival from all-cause mortality with increasing stages of cardiac damage, especially Stages 3 and 4 (log-rank χ^2 65.2, $P < 0.001$). Using Cox proportional hazard analyses (Table 3), stage of cardiac damage as classified by the proposed staging classification was independently associated with all-cause mortality (HR: 1.25, 95% CI: 1.09-1.45; $P = 0.002$). This effect seemed to be determined mainly by Stage 4 (HR: 2.33, 95% CI: 1.19-4.54; $P = 0.013$), as other stages of cardiac damage did not

Table 1: Clinical characteristics of total study population and per stage of cardiac damage classified according to proposed staging classification.

Variables	Total population (N = 616)	Stage 0 (N = 55)	Stage 1 (N = 164)	Stage 2 (N = 281)	Stage 3 (N = 35)	Stage 4 (N = 81)	P value*
Age (years)	75.4±10.7	72.6±10.3	72.1±12.1	76.3±10.2‡	79.6±8.3‡‡	78.5±7.8‡‡	<0.001
Male gender, N (%)	359 (58)	36 (66)	87 (53)	166 (59)	13 (37)	57 (70)	0.006
Body mass index (kg/m ²)	26.3±4.4	26.8±4.6	26.2±4.0	26.6±4.7	25.3±3.7	25.6±4.5	0.244
Body surface area (m ²)	1.87±0.21	1.88±0.21	1.86±0.20	1.88±0.21	1.80±0.21	1.87±0.20	0.186
Hypertension, N (%)	414 (67)	34 (62)	114 (70)	190 (67)	25 (71)	51 (63)	0.720
Hypercholesterolemia, N (%)	348 (57)	32 (58)	87 (53)	163 (58)	16 (46)	50 (62)	0.452
Diabetes mellitus, N (%)	150 (24)	12 (22)	35 (21)	70 (25)	6 (17)	27 (33)	0.233
Coronary artery disease, N (%)	311 (51)	22 (40)	75 (46)	143 (51)	15 (43)	56 (69)	0.003
Prior myocardial infarction, N (%)	126 (21)	9 (16)	26 (16)	57 (20)	9 (26)	25 (31)	0.069
History of smoking, N (%)	214 (35)	26 (47)	54 (33)	100 (36)	9 (26)	25 (31)	0.204
COPD, N (%)	101 (16)	8 (15)	7 (17)	36 (13)	12 (34)	18 (22)	0.012
History of atrial fibrillation, N (%)	169 (27)	5 (9)	16 (10)	83 (30)	17 (49)	48 (59)	<0.001
NYHA functional class ≥III, N (%)	254 (42)	21 (38)	40 (25)	117 (43)	24 (69)	52 (64)	<0.001
Symptoms, N (%)							
Angina	260 (42)	24 (44)	79 (49)	120 (43)	11 (31)	26 (32)	0.100
Dyspnea	478 (78)	40 (73)	111 (68)	220 (79)	33 (94)	74 (91)	<0.001
Syncope	67 (11)	5 (9)	25 (15)	33 (12)	0 (0)	4 (5)	0.027
Estimated GFR (ml/min/1.73 m ²)	62.2±20.6	66.1±21.5	64.7±21.8	63.5±19.8	50.5±19.9†‡§	55.4±17.7†‡§	<0.001
<60 ml/min/1.73 m ² , N (%)	287 (47)	22 (40)	72 (44)	121 (43)	23 (66)	49 (61)	0.006
Systolic BP (mmHg)	138.0±23.5	142.0±21.9	140.5±21.1	139.6±24.3	127.2±27.6†‡§	129.2±22.0†‡§	<0.001
Diastolic BP (mmHg)	73.8±13.4	76.6±13.6	76.0±12.4	72.8±13.1	69.2±16.1	72.7±14.0	0.011
Medication use, N (%)							
Beta-blocker	328 (53)	24 (44)	83 (51)	151 (54)	18 (51)	52 (64)	0.166
ACE-inhibitor/ARB	306 (50)	25 (46)	76 (46)	143 (51)	18 (51)	44 (54)	0.730
Aspirin/thienopyridines	280 (46)	26 (47)	84 (51)	122 (43)	13 (37)	35 (43)	0.422
Oral anticoagulation	173 (28)	10 (18)	20 (12)	82 (29)	16 (46)	45 (56)	<0.001
Statins	355 (58)	33 (60)	93 (57)	164 (58)	17 (49)	48 (59)	0.825
Calcium channel blocker	145 (24)	10 (18)	39 (24)	72 (26)	7 (20)	17 (21)	0.718
Diuretic agents	311 (51)	14 (26)	65 (40)	153 (54)	29 (83)	50 (62)	<0.001

Continuous variables are presented as mean±SD or median [interquartile range]. Categorical variables are expressed as number (percentage). ACE, angiotensin-converting enzyme; ARB, angiotensin II receptor blocker; BP, blood pressure, COPD, chronic obstructive pulmonary disease; GFR, glomerular filtration rate; NYHA, New York Heart Association. *P values depict differences between stages of cardiac damage and are calculated by ANOVA and Kruskal-Wallis H test for continuous data (with normal and non-normal distribution, respectively), and by χ^2 test for categorical data. †P value <0.05 vs. Stage 0 with Bonferroni's post hoc analysis. ‡P value <0.05 vs. Stage 1 with Bonferroni's post hoc analysis. §P value <0.05 vs. Stage 2 with Bonferroni's post hoc analysis.

Table 2: Echocardiographic characteristics of total study population and per stage of cardiac damage classified according to proposed staging classification.

Variables	Total population (N = 616)	Stage 0 (N = 55)	Stage 1 (N = 164)	Stage 2 (N = 281)	Stage 3 (N = 35)	Stage 4 (N = 81)	P value*
Heart rate at TTE (bpm)	75.0±14.4	74.3±12.1	72.0±12.5	73.6±13.6	84.2±16.2†‡§	82.0±17.6†‡§	<0.001
Valve morphology, N (%)							
Tricuspid	555 (90)	47 (86)	135 (82)	261 (93)	34 (97)	78 (96)	
Bicuspid	61 (10)	8 (15)	29 (18)	20 (7)	1 (3)	3 (4)	
Atrial fibrillation at TTE, N (%)	72 (12)	0 (0)	0 (0)	34 (12)	10 (29)	28 (35)	<0.001
LV end-diastolic diameter (mm)	48.9±8.3	42.4±5.0	48.2±7.5†	49.3±8.3†	50.8±9.3†	52.0±8.8†‡	<0.001
LV end-systolic diameter (mm)	35.6±9.9	29.6±5.1	34.2±8.7†	35.3±9.7†	39.3±11.7†‡	41.8±11.0†‡§	<0.001
Septal wall thickness (mm)	12.9±2.3	11.3±1.6	12.5±1.9†	13.4±2.4†‡	12.7±2.4†	12.8±2.6†	<0.001
Posterior wall thickness (mm)	12.1±2.0	10.9±1.4	11.8±1.9	12.6±2.1†‡	11.9±1.9	11.8±2.2§	<0.001
LV mass index (g/m ²)	129.4±37.1	85.7±14.2	122.4±32.0†	138.0±37.6†‡	138.3±32.9†	138.6±34.5†‡	<0.001
LV end-diastolic volume (ml)	98 [76-130]	78 [60-95]	90 [74-114]	101 [80-133]	113 [71-139]	128 [92-161]	<0.001
LV end-systolic volume (ml)	45 [31-76]	31 [21-41]	38 [27-55]	47 [33-74]	58 [36-97]	83 [45-118]	
LV ejection fraction (%)	52.9±14.0	61.9±7.3	57.2±12.0	53.1±12.9†‡	45.3±14.4†‡§	40.6±15.1†‡§	<0.001
<50%, N (%)	203 (33)	0 (0)	33 (20)	90 (32)	21 (60)	59 (73)	<0.001
LV global longitudinal strain (%)	14.0±4.5	17.3±3.6	15.2±3.7†	14.2±4.2†	11.3±5.1†‡§	9.5±3.6†‡§	<0.001
Peak E-wave velocity (cm/s)	83.0±30.0	65.2±18.5	72.4±22.8	85.8±30.7†‡	104.4±26.1†‡§	98.1±34.3†‡§	<0.001
E' (cm/s)	5.1±2.1	6.0±1.5	4.4±1.5†	5.2±2.3†	5.6±2.1†	5.3±2.4†	<0.001
E/e' ratio	16 [12-22]	11 [10-12]	17 [13-21]	17 [12-22]	20 [15-38]	20 [13-28]	<0.001
Left atrial volume index (ml/m ²)	41.0±17.5	23.9±5.8	25.1±6.8	48.8±14.4†‡	51.3±18.2†‡	52.3±16.7†‡	<0.001
Significant MR, N (%)	56 (9)	0 (0)	0 (0)	30 (11)	11 (31)	15 (19)	<0.001
Systolic PAP (mmHg)	33.0±12.4	24.9±8.4	28.7±7.5	31.9±9.5†‡	56.5±11.7†‡§	38.2±14.8†‡§	<0.001
Significant TR, N (%)	43 (7)	0 (0)	0 (0)	0 (0)	24 (69)	19 (24)	<0.001
TAPSE (mm)	20.2±3.9	21.9±2.5	21.5±3.0	21.3±3.0	19.0±3.0†‡§	13.5±1.5†‡§	<0.001
Mean AV gradient (mmHg)	42.3±16.6	41.0±13.8	43.4±15.3	45.0±17.7	37.7±14.9	33.3±14.4†§	<0.001
Peak aortic jet velocity (m/s)	4.0±0.7	4.0±0.6	4.1±0.7	4.1±0.8	3.8±0.7	3.5±0.7†‡§	<0.001
AVA (cm ²)	0.77±0.19	0.85±0.22	0.78±0.17	0.76±0.19†	0.76±0.23	0.71±0.18†	0.001
Indexed AVA (cm ² /m ²)	0.41±0.10	0.46±0.11	0.42±0.09	0.41±0.10†	0.42±0.11	0.38±0.10†‡	<0.001
Low-flow low-gradient AS, N (%)	162 (26)	12 (22)	30 (18)	61 (22)	13 (37)	46 (57)	<0.001

Continuous variables are presented as mean±SD. Categorical variables are expressed as number (percentage). AS, aortic stenosis; AV, aortic valve; AVA, aortic valve area; bpm, beats per minute; LV, left ventricular; MR, mitral regurgitation; PAP, pulmonary arterial pressure; TAPSE, tricuspid annular plane systolic excursion; TR, tricuspid regurgitation; TTE, transthoracic echocardiogram. *P values depict differences between stages of cardiac damage and are calculated by ANOVA and Kruskal-Wallis test for continuous data (with normal and non-normal distribution, respectively), and by χ^2 test for categorical data. †P value <0.05 vs. Stage 0 with Bonferroni's post hoc analysis. ‡P value <0.05 vs. Stage 1 with Bonferroni's post hoc analysis. §P value <0.05 vs. Stage 2 with Bonferroni's post hoc analysis. ||P value <0.05 vs. Stage 3 with Bonferroni's post hoc analysis.

Table 3: Univariable and multivariable Cox proportional hazard analyses for all-cause mortality including proposed stages of cardiac damage.

Variable	Univariate analysis		Multivariate analysis	
	Hazard ratio (95% CI)	P value	Hazard ratio (95% CI)	P value
Age (per 1 year increase)	1.034 (1.020-1.048)	<0.001	1.023 (1.008-1.038)	0.003
Male gender (yes/no)	1.099 (0.845-1.429)	0.480	1.119 (0.846-1.480)	0.432
Coronary artery disease (yes/no)	1.566 (1.207-2.031)	0.001	1.035 (0.751-1.425)	0.835
Previous myocardial infarction (yes/no)	2.021 (1.521-2.685)	<0.001	1.490 (1.051-2.114)	0.025
Chronic obstructive pulmonary disease (yes/no)	1.191 (0.830-1.708)	0.343		
History of atrial fibrillation (yes/no)	1.455 (1.094-1.935)	0.010	0.948 (0.692-1.298)	0.737
Diabetes mellitus (yes/no)	1.598 (1.206-2.118)	0.001	1.552 (1.159-2.080)	0.003
NYHA functional class \geq III (yes/no)	1.455 (1.116-1.895)	0.006	1.165 (0.875-1.551)	0.297
Estimated GFR <60 ml/min/1.73 m ² (yes/no)	2.422 (1.859-3.154)	<0.001	1.736 (1.312-2.295)	<0.001
Systolic blood pressure (per 1 mmHg increase)	0.998 (0.992-1.003)	0.430		
Diuretics (yes/no)	1.496 (1.155-1.938)	0.002	1.043 (0.787-1.381)	0.770
Peak aortic jet velocity (per 1 m/s increase)	0.645 (0.537-0.774)	<0.001	0.943 (0.761-1.169)	0.592
Indexed AVA (per 0.01 cm ² /m ² increase)	1.430 (0.386-5.291)	0.592	4.052 (0.910-18.05)	0.066
Surgical or transcatheter AVR (yes/no)	0.370 (0.269-0.509)	<0.001	0.384 (0.276-0.535)	<0.001
LV global longitudinal strain (per 1% increase)	0.911 (0.886-0.936)	<0.001	0.951 (0.919-0.983)	0.004
Stage of cardiac damage (per 1 stage increase)	1.541 (1.370-1.734)	<0.001	1.253 (1.087-1.445)	0.002
Stages according to cardiac damage				
Stage 0 (no cardiac damage)	Reference		Reference	
Stage 1 (LV damage)	1.108 (0.623-1.968)	0.727	1.138 (0.629-2.057)	0.669
Stage 2 (left atrial or mitral damage)	1.614 (0.938-2.776)	0.084	1.293 (0.730-2.290)	0.378
Stage 3 (pulmonary vasculature or tricuspid damage)	2.782 (1.387-5.578)	0.004	1.704 (0.786-3.696)	0.177
Stage 4 (right ventricular damage)	4.429 (2.471-7.938)	<0.001	2.327 (1.192-4.541)	0.013

AVA, aortic valve area; AVR, aortic valve replacement; CI, confidence interval; HR, hazard ratio; GFR, glomerular filtration rate; LV, left ventricular; NYHA, New York Heart Association.



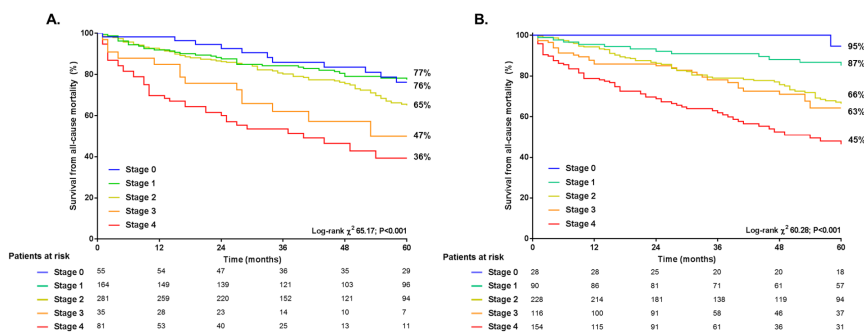


Figure 3: Kaplan-Meier survival curves for all-cause mortality per stage of cardiac damage according to the proposed staging classification (*panel A*) and after reclassification by incorporating LV GLS (*panel B*). GLS, global longitudinal strain; LV, left ventricular.

show a significant independent effect on prognosis ($P>0.05$). Importantly, LV GLS was associated with all-cause mortality, independent of stage of cardiac damage (HR: 0.95, 95% CI: 0.92-0.98; $P=0.004$).

INCORPORATION OF LV GLS IN STAGING CLASSIFICATION AND PROGNOSTIC IMPLICATIONS

To incorporate LV GLS in the proposed staging classification, LV GLS was divided by quintiles (i.e., $>18\%$, 15.8 to 18%, 13.2 to 15.8%, 10 to 13.2% and $<10\%$) and assigned to the stages of cardiac damage as shown in Figure 1. Using the same approach as with the proposed staging classification, patients were reclassified by taking into account LV GLS: 28 (4%) patients were categorized as Stage 0, 90 (15%) patients as Stage 1, 228 (37%) patients as Stage 2, 116 (19%) patients as Stage 3 and 154 (25%) patients as Stage 4 (Figure 2 *panel B*). Baseline and echocardiographic characteristics per reclassified stage of cardiac damage after incorporation of LV GLS are summarized in Supplemental Tables 5 and 6, respectively.

Kaplan-Meier survival curves for all-cause mortality per stage of cardiac damage reclassified after incorporating LV GLS are depicted in Figure 3 *panel B*. Cumulative 5-year survival rates decreased with increasing stages of cardiac damage (log-rank χ^2 60.3, $P<0.001$). Compared to the proposed staging classification, use of the staging classification incorporating LV GLS (Figure 3 *panel B*) resulted in better discrimination of cumulative survival in Stage ≥ 2 vs. Stage 0 and 1 ($P<0.01$ for all and $P<0.02$ for all, respectively). Kaplan-Meier analysis including the patients under medical therapy (i.e., censored at the moment of AVR) showed decreasing survival rates with increasing stages of cardiac damage (log-rank χ^2 11.50, $P=0.022$; Supplemental Figure 5).

Table 4 summarizes the Cox proportional hazard analyses for all-cause mortality, assessing the prognostic value of the staging classification after incorporation of LV GLS. On multivariable analysis, the stage of cardiac damage was independently associated with all-cause mortality (HR: 1.41, 95% CI: 1.22-1.62; $P<0.001$). Importantly, Stages 2-4 were all independent predictors of outcome: with each increasing stage, a gradually increasing risk for all-cause mortality was observed (Stage 2: HR 4.35 [95% CI: 1.35-14.10;

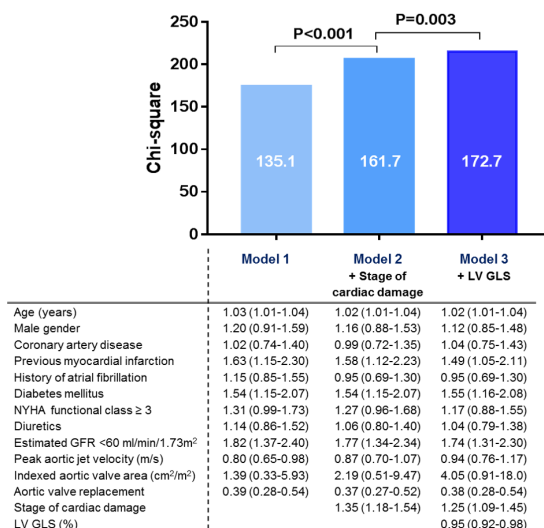


Figure 4: Incremental value of LV GLS on top of the proposed staging classification of cardiac damage. The bar graphs depict the incremental prognostic value of LV GLS (Model 3) over the stages of cardiac damage and clinical parameters (Model 2) for all-cause mortality, as illustrated by a significant increase in χ^2 values on the y-axis. Data are presented as hazard ratios with corresponding 95% confidence intervals. GFR, glomerular filtration rate; GLS, global longitudinal strain; LV, left ventricular; NYHA, New York Heart Association.

$P=0.014$], Stage 3: HR 4.82 [95% CI: 1.45-16.00; $P=0.010$] and Stage 4: HR 8.08 [95% CI: 2.45-26.67; $P<0.001$]).

INCREMENTAL PROGNOSTIC VALUE OF LV GLS OVER PROPOSED STAGING CLASSIFICATION

To assess the incremental prognostic value of LV GLS in addition to clinical parameters and the proposed staging classification, a likelihood ratio test was performed. As illustrated by Figure 4, the addition of stage of cardiac damage to a baseline model (Model 1) consisting of clinical characteristics associated with all-cause mortality in the univariable Cox regression analysis (Table 3) resulted in a significant increase in χ^2 (from 135 to 162; $P<0.001$). Adding LV GLS to the model including clinical parameters and stage of cardiac damage (Model 2) further improved the χ^2 value ($P=0.003$), thereby demonstrating the incremental prognostic value of LV GLS over stages of cardiac damage as classified by the proposed staging classification. For the subgroup of 162 patients with low-flow low-gradient severe AS, LV GLS showed incremental prognostic value over stages of cardiac damage (Supplemental Table 7 and Supplemental Figure 6).

DISCUSSION

THE present study demonstrated that, in a large single-center cohort of symptomatic severe AS patients, the extent of cardiac damage as classified by a recently proposed staging classification was independently associated with all-cause mortality. However,

Table 4: Univariable and multivariable Cox proportional hazard analyses for all-cause mortality including stages of cardiac damage after reclassification by incorporating LV GLS.

Variable	Univariate analysis		Multivariate analysis	
	Hazard ratio (95% CI)	P value	Hazard ratio (95% CI)	P value
Age (per 1 year increase)	1.034 (1.020-1.048)	<0.001	1.023 (1.009-1.038)	0.002
Male gender (yes/no)	1.099 (0.845-1.429)	0.480	1.111 (0.841-1.468)	0.459
Coronary artery disease (yes/no)	1.566 (1.207-2.031)	0.001	1.017 (0.740-1.399)	0.916
Previous myocardial infarction (yes/no)	2.021 (1.521-2.685)	<0.001	1.462 (1.031-2.073)	0.033
Chronic obstructive pulmonary disease (yes/no)	1.191 (0.830-1.708)	0.343		
History of atrial fibrillation (yes/no)	1.455 (1.094-1.935)	0.010	1.039 (0.767-1.407)	0.806
Diabetes mellitus (yes/no)	1.598 (1.206-2.118)	0.001	1.586 (1.182-2.127)	0.002
NYHA functional class \geq III (yes/no)	1.455 (1.116-1.895)	0.006	1.182 (0.890-1.568)	0.248
Estimated GFR <60 ml/min/1.73 m ² (yes/no)	2.422 (1.859-3.154)	<0.001	1.746 (1.320-2.309)	<0.001
Systolic blood pressure (per 1 mmHg increase)	0.998 (0.992-1.003)	0.430		
Diuretics (yes/no)	1.496 (1.155-1.938)	0.002	0.994 (0.748-1.320)	0.966
Peak aortic jet velocity (per 1 m/s increase)	0.645 (0.537-0.774)	<0.001	0.924 (0.747-1.144)	0.468
Indexed AVA (per 0.01 cm ² /m ² increase)	1.430 (0.386-5.291)	0.592	4.115 (0.914-18.52)	0.065
Surgical or transcatheter AVR (yes/no)	0.370 (0.269-0.509)	<0.001	0.393 (0.282-0.546)	<0.001
Stage of cardiac damage (per 1 stage increase)	1.556 (1.380-1.754)	<0.001	1.406 (1.221-1.619)	<0.001
Stages according to cardiac damage				
Stage 0 (no cardiac damage)	Reference		Reference	
Stage 1 (LV damage)	2.259 (0.678-7.526)	0.184	3.199 (0.945-10.84)	0.062
Stage 2 (left atrial or mitral damage)	3.928 (1.242-12.43)	0.020	4.354 (1.345-14.10)	0.014
Stage 3 (pulmonary vasculature or tricuspid damage)	4.641 (1.438-14.98)	0.010	4.824 (1.454-16.00)	0.010
Stage 4 (right ventricular damage)	8.917 (2.814-28.26)	<0.001	8.082 (2.450-26.67)	0.001

AVA, aortic valve area; AVR, aortic valve replacement; CI, confidence interval; HR, hazard ratio; GFR, glomerular filtration rate; LV, left ventricular; NYHA, New York Heart Association.

this seemed to be mainly determined by right ventricular damage (i.e., Stage 4). After incorporation of LV GLS divided by quintiles into the proposed staging classification for reclassification, Stages 2-4 were all independently associated with all-cause mortality. This suggests that incorporation of LV GLS improves the prognostic value of the staging classification by identifying patients with more advanced cardiac damage. LV GLS was demonstrated to have incremental prognostic value over clinical characteristics and over the originally proposed staging classification according to the extent of cardiac damage.

CARDIAC DAMAGE AND LV GLS IN SEVERE AS

Severe AS is currently regarded as a disease not limited to the aortic valve but also affecting the LV myocardium. Pressure overload caused by the stenotic aortic valve will ultimately lead to formation of myocardial fibrosis, resulting in LV systolic and diastolic dysfunction [1, 21]. However, hemodynamic consequences of severe AS often reach beyond the LV myocardium, as characterized by a high prevalence of concomitant mitral [2] and tricuspid regurgitation [3] and RV dysfunction [4–6] which negatively affect prognosis even after AVR. Génèreux et al. [7] were the first to demonstrate the prognostic implications of classification of stages of symptomatic severe AS and their findings have recently been confirmed in more heterogeneous populations of symptomatic [8] and asymptomatic [9] AS patients as well as in patients undergoing transcatheter AVR [10].

As a potential surrogate marker of myocardial fibrosis, LV myocardial longitudinal function as assessed by LV GLS using speckle tracking echocardiography has been shown to be an independent predictor of mortality and adverse outcomes in both symptomatic and asymptomatic severe AS patients [11, 12, 22–24]. Ng et al. [11] determined that severe AS patients with an LVEF $\geq 55\%$ but impaired LV GLS (i.e., LV GLS $> -14\%$) had a risk for all-cause mortality comparable to patients with impaired LVEF. This was corroborated by a recent meta-analysis showing a significant relationship between impaired LV GLS (i.e., absolute LV GLS $< -14.7\%$) and mortality in asymptomatic AS patients with LVEF $\geq 60\%$ [25]. Interestingly, Cavalcante et al. [5] demonstrated that LV GLS was associated with all-cause mortality independent of the presence of significant tricuspid regurgitation and RV dysfunction in 65 low-flow low-gradient severe AS patients. The present study confirms and extends these findings by demonstrating that LV GLS is associated with all-cause mortality independently of stage of cardiac damage and has incremental prognostic value over clinical parameters and the originally proposed staging classification.

RISK STRATIFICATION IN SEVERE AS

According to current guideline recommendations, a Class I indication for AVR is present in patients with severe AS with symptoms or evidence of LV systolic dysfunction defined by a LVEF $< 50\%$ [14, 16]. The decision to intervene and the choice of type of intervention (i.e., surgical vs. transcatheter AVR) is made by the heart team based on an individual risk-benefit analysis and therefore, accurate risk assessment is paramount [14]. For pre-operative risk stratification, the Society of Thoracic Surgeons Predicted Risk of Mortality (STS-PROM) [26] and the logistic European System for Cardiac Operative Risk Evaluation (EuroSCORE) [27] models are recommended and most frequently utilized [14, 16]. However, these algorithms derive from surgical populations and do not account for im-

improvements in both surgical and transcatheter procedures [28]. Particularly in the field of transcatheter AVR, subsequent efforts have been made to develop transcatheter AVR-specific risk scores which include clinically relevant parameters of patient comorbidity [29] and frailty [30], but these are not routinely used.

Importantly, cardiac damage as assessed by conventional echocardiography remained a strong predictor for mortality after correcting for STS-PROM, comorbidities such as oxygen-dependent COPD and frailty [7, 10]. The presence of cardiac damage is underrepresented in current risk models: only atrial fibrillation, LV dysfunction and significant MR and TR are included in the STS-PROM and LV dysfunction and pulmonary hypertension in the logistic EuroSCORE, respectively. Importantly, both the present study and two recent studies did not find a relevant impact of the lower stages of cardiac damage (i.e., LV dysfunction and LA damage or significant MR) on prognosis [8, 10]. The presence of significant TR or pulmonary hypertension and RV dysfunction, however, was strongly associated with all-cause mortality, suggesting that incorporation of these parameters in current risk models may aid in future pre-procedural risk assessment [8, 10].

More advanced echocardiographic parameters such as LV GLS are not routinely assessed in clinical practice and are currently not included in risk stratification models. To modify the proposed staging scheme of cardiac injury, Tastet et al. [9] added impaired LV GLS (i.e., absolute value $\leq 15\%$) as a criterion for LV damage (Stage 1) and consequently reclassified patients from Stage 0 (i.e., no cardiac damage) to Stage 1. Although the authors concluded that the modified staging scheme resulted in better discrimination of mortality curves, the effect of the addition of LV GLS specifically was unclear, as LV GLS was only available in one-third of the study population (250/735 patients). The present study extends these findings by demonstrating in a much larger population that LV GLS has incremental prognostic value over cardiac damage assessed by more conventional means. Incorporation of LV GLS by quintiles in the proposed staging classification reclassifies patients in lower stages to more advanced stages of cardiac damage. This results in better discrimination of prognostic impact of the separate stages, especially of LA or mitral valve damage (Stage 2), when compared to the original staging classification. These findings confirm the relevance of using both conventional and advanced echocardiographic parameters for the assessment of cardiac injury in clinical practice, which may aid in future risk stratification. Future prospective studies are needed for validation of this extended staging classification before implementation in clinical practice is feasible.

STUDY LIMITATIONS

The current study is limited by its retrospective design and was performed in a single referral center. This may have introduced selection and referral bias as patients underwent AVR based on the decision of the heart team as recommended by current guidelines [14]. Frailty index could not be taken into account in the analyses, as the components comprising frailty index (e.g., gait speed, weight loss, cognitive assessment) were not routinely assessed and reported in hospital records. In the current study, the study population consisted of symptomatic severe AS patients and findings cannot be extrapolated to asymptomatic AS patients. Future research on the staging of cardiac damage

using incorporation of LV GLS in this population could provide insight in the role of this extended staging classification in therapeutic decision making by identifying patients (in particular with preserved [$>50\%$] or supranormal [$\geq 60\%$] LVEF and impaired LV GLS) who might benefit from early intervention. Coronary artery disease and previous myocardial infarction were not regarded as exclusion criteria, which may have influenced LV GLS measurements. However, an earlier study on LV GLS in AS found no significant difference in LV GLS between patients with and without obstructive coronary artery disease that required coronary artery bypass grafting [12]. Other comorbidities such as chronic obstructive pulmonary disease and atrial fibrillation may have contributed to pulmonary hypertension and RV dysfunction. However, on multivariable analysis in the present study, LV GLS was independently associated with all-cause mortality after correcting for coronary artery disease, previous myocardial infarction and atrial fibrillation (COPD was not associated with outcome in the univariable Cox regression analysis). Furthermore, as comorbidities such as coronary artery disease are prevalent findings in severe AS patients, inclusion of these patients depicts a true representation of the severe AS population in daily practice. For correct assessment of cardiac damage, comprehensive echocardiographic evaluation is necessary, preferably using standard protocols. This may not be always be feasible in clinical practice, although the included criteria for the staging classification were selected based on broad acceptance and simplicity in acquisition [7]. In the present study, LV GLS was measured using vendor-dependent software and therefore, the results may not be generalizable across other imaging platforms. However, recent studies have reported good feasibility and inter- and intra-observer variability and only limited differences between vendors, especially compared to conventional parameters such as LVEF [31, 32]. Finally, LV GLS has been reported to be a load-dependent parameter, influenced particularly by afterload [33, 34]. In AS, afterload is increased due to pressure overload and this may have affected LV GLS measurements in the current study. Importantly, impaired LV GLS has been suggested to reflect true depression of myocardial contractility [35], and has been shown to be an independent predictor of outcome in load-dependent conditions such as acute heart failure [36] and secondary mitral regurgitation [37].

CONCLUSIONS

THIS large single-center cohort of symptomatic severe AS patients demonstrates that LV GLS has incremental prognostic value over a recently proposed staging classification based on cardiac damage. Incorporation of ranges of LV GLS in the staging classification results in the identification of patients with more advanced cardiac damage among those classified within the less advanced cardiac damage stages and reclassification of these patients to more advanced stages, improving the prognostic value of the originally proposed staging classification. These findings suggest that the addition of LV GLS to the currently proposed staging classification may enhance risk stratification, especially when staging of cardiac damage based on conventional echocardiography suggests limited cardiac damage. In addition, it may provide better pre-procedural risk assessment if implemented in currently used risk prediction algorithms and therefore improve timing of intervention in severe AS patients.

REFERENCES

- [1] Carabello BA, Paulus WJ. Aortic stenosis. *Lancet*. 2009;373(9667):956-66.
- [2] Barbanti M, Webb JG, Hahn RT, Feldman T, Boone RH, Smith CR, et al. Impact of preoperative moderate/severe mitral regurgitation on 2-year outcome after transcatheter and surgical aortic valve replacement insight from the placement of aortic transcatheter valve (PARTNER) trial cohort A. *Circulation*. 2013;128(25):2776-84.
- [3] Amano M, Izumi C, Taniguchi T, Morimoto T, Miyake M, Nishimura S, et al. Impact of concomitant tricuspid regurgitation on long-term outcomes in severe aortic stenosis. *Eur Heart J Cardiovasc Imaging*. 2019;20(3):353-60.
- [4] Galli E, Guirette Y, Feneon D, Daudin M, Fournet M, Leguerrier A, et al. Prevalence and prognostic value of right ventricular dysfunction in severe aortic stenosis. *Eur Heart J Cardiovasc Imaging*. 2015;16(5):531-8.
- [5] Cavalcante JL, Rijal S, Althouse AD, Delgado-Montero A, Katz WE, Schindler JT, et al. Right Ventricular Function and Prognosis in Patients with Low-Flow, Low-Gradient Severe Aortic Stenosis. *J Am Soc Echocardiogr*. 2016;29(4):325-33.
- [6] Asami M, Stortecky S, Praz F, Lanz J, Räber L, Franzone A, et al. Prognostic Value of Right Ventricular Dysfunction on Clinical Outcomes After Transcatheter Aortic Valve Replacement. *J Am Coll Cardiol Img*. 2019;12(4):577-87.
- [7] Génereux P, Pibarot P, Redfors B, Mack MJ, Makkar RR, Jaber WA, et al. Staging classification of aortic stenosis based on the extent of cardiac damage. *Eur Heart J*. 2017;38(45):3351-8.
- [8] Vollema EM, Amanullah MR, Ng ACT, van der Bijl P, Prevedello F, Sin YK, et al. Staging Cardiac Damage in Patients With Symptomatic Aortic Valve Stenosis. *J Am Coll Cardiol*. 2019;74(4):538-49.
- [9] Tastet L, Tribouilloy C, Maréchaux S, Vollema EM, Delgado V, Salaun E, et al. Staging Cardiac Damage in Patients With Asymptomatic Aortic Valve Stenosis. *J Am Coll Cardiol*. 2019;74(4):550-63.
- [10] Fukui M, Gupta A, Abdelkarim I, Sharbaugh MS, Althouse AD, Elzomor H, et al. Association of Structural and Functional Cardiac Changes with Transcatheter Aortic Valve Replacement Outcomes in Patients with Aortic Stenosis. *JAMA Cardiology*. 2019;4(3):215-22.
- [11] Ng ACT, Prihadi EA, Antoni ML, Bertini M, Ewe SH, Marsan NA, et al. Left ventricular global longitudinal strain is predictive of all-cause mortality independent of aortic stenosis severity and ejection fraction. *Eur Heart J Cardiovasc Imaging*. 2018;19(8):859-67.
- [12] Kusunose K, Goodman A, Parikh R, Barr T, Agarwal S, Popovic ZB, et al. Incremental prognostic value of left ventricular global longitudinal strain in patients with aortic stenosis and preserved ejection fraction. *Circ Cardiovasc Imaging*. 2014;7(6):938-45.
- [13] Klaeboe LG, Haland TE, Leren IS, ter Bekke RMA, Brekke PH, Røsjø H, et al. Prognostic Value of Left Ventricular Deformation Parameters in Patients with Severe Aortic Stenosis: A Pilot Study of the Usefulness of Strain Echocardiography. *J Am Soc Echocardiogr*. 2017;30(8):727-35.e1.

- [14] Baumgartner H, Falk V, Bax JJ, De Bonis M, Hamm C, Holm PJ, et al. 2017 ESC/EACTS Guidelines for the management of valvular heart disease. *Eur Heart J*. 2017;38(36):2739-86.
- [15] Baumgartner H, Hung J, Bermejo J, Chambers JB, Edvardsen T, Goldstein S, et al. Recommendations on the echocardiographic assessment of aortic valve stenosis: A focused update from the European Association of Cardiovascular Imaging and the American Society of Echocardiography. *Eur Heart J Cardiovasc Imaging*. 2017;18(3):254-75.
- [16] Nishimura RA, Otto CM, Bonow RO, Carabello BA, Erwin JP, Guyton RA, et al. 2014 AHA/ACC Guideline for the Management of Patients With Valvular Heart Disease: a report of the American College of Cardiology/American Heart Association Task Force on Practice Guidelines. *J Am Coll Cardiol*. 2014;63(22):e57-185.
- [17] Lang RM, Badano LP, Mor-Avi V, Afilalo J, Armstrong A, Ernande L, et al. Recommendations for Cardiac Chamber Quantification by Echocardiography in Adults: An Update from the American Society of Echocardiography and the European Association of Cardiovascular Imaging. *Eur Heart J Cardiovasc Imaging*. 2015;16(3):233-71.
- [18] Nagueh SF, Smiseth OA, Appleton CP, Byrd BF, Dokainish H, Edvardsen T, et al. Recommendations for the Evaluation of Left Ventricular Diastolic Function by Echocardiography: An Update from the American Society of Echocardiography and the European Association of Cardiovascular Imaging. *Eur Heart J Cardiovasc Imaging*. 2016;17(12):1321-60.
- [19] Lancellotti P, Tribouilloy C, Hagendorff A, Popescu BA, Edvardsen T, Pierard LA, et al. Recommendations for the echocardiographic assessment of native valvular regurgitation: An executive summary from the European Association of Cardiovascular Imaging. *Eur Heart J Cardiovasc Imaging*. 2013;14(7):611-44.
- [20] Rudski LG, Lai WW, Afilalo J, Hua L, Handschumacher MD, Chandrasekaran K, et al. Guidelines for the Echocardiographic Assessment of the Right Heart in Adults: A Report from the American Society of Echocardiography. Endorsed by the European Association of Echocardiography, a registered branch of the European Society of Cardiology, and. *J Am Soc Echocardiogr*. 2010;23(7):685-713.
- [21] Asami M, Lanz J, Stortecky S, Raber L, Franzone A, Heg D, et al. The Impact of Left Ventricular Diastolic Dysfunction on Clinical Outcomes After Transcatheter Aortic Valve Replacement. *J Am Coll Cardiol Interv*. 2018;11(6):593-601.
- [22] Dahl JS, Videbæk L, Poulsen MK, Rudbæk TR, Pellikka PA, Maller JE. Global strain in severe aortic valve stenosis: relation to clinical outcome after aortic valve replacement. *Circ Cardiovasc Imaging*. 2012;5(5):613-20.
- [23] Kearney LG, Lu K, Ord M, Patel SK, Profitis K, Matalanis G, et al. Global longitudinal strain is a strong independent predictor of all-cause mortality in patients with aortic stenosis. *Eur Heart J Cardiovasc Imaging*. 2012;13(10):827-33.
- [24] Vollema EM, Sugimoto T, Shen M, Tastet L, Ng ACT, Abou R, et al. Association of left ventricular global longitudinal strain with asymptomatic severe aortic stenosis natural course and prognostic value. *JAMA Cardiology*. 2018;3(9):839-47.
- [25] Magne J, Cosyns B, Popescu BA, Carstensen HG, Dahl J, Desai MY, et al. Distribution and Prognostic Significance of Left Ventricular Global Longitudinal Strain in Asymptomatic Significant Aortic Stenosis: An Individual Participant Data Meta-Analysis. *J Am Coll Cardiol Img*. 2019;12(1):84-92.

- [26] Dewey TM, Brown D, Ryan WH, Herbert MA, Prince SL, Mack MJ. Reliability of risk algorithms in predicting early and late operative outcomes in high-risk patients undergoing aortic valve replacement. *J Thorac Cardiovasc Surg.* 2008;135(1):180-7.
- [27] Nashef SAM, Roques F, Michel P, Gauducheau E, Lemeshow S, Salamon R. European system for cardiac operative risk evaluation (EuroSCORE). *Eur J Cardiothorac Surg.* 1999;16(1):9-13.
- [28] Tarantini G, Lefèvre T, Terkelsen CJ, Frerker C, Ohlmann P, Mojoli M, et al. One-year outcomes of a European transcatheter aortic valve implantation cohort according to surgical risk sub-analysis of the SOURCE 3 registry. *Circ Cardiovasc Interv.* 2019;12(1):1-10.
- [29] Edwards FH, Cohen DJ, O'Brien SM, Peterson ED, Mack MJ, Shahian DM, et al. Development and validation of a risk prediction model for in-hospital mortality after transcatheter aortic valve replacement. *JAMA Cardiology.* 2016;1(1):46-52.
- [30] Hermiller JB, Yakubov SJ, Reardon MJ, Deeb GM, Adams DH, Afilalo J, et al. Predicting Early and Late Mortality After Transcatheter Aortic Valve Replacement. *J Am Coll Cardiol.* 2016;68(4):343-52.
- [31] Negishi T, Negishi K, Thavendiranathan P, Cho GY, Popescu BA, Vinereanu D, et al. Effect of Experience and Training on the Concordance and Precision of Strain Measurements. *J Am Coll Cardiol Img.* 2017;10(5):518-22.
- [32] Farsalinos KE, Daraban AM, Ünlü S, Thomas JD, Badano LP, Voigt JU. Head-to-Head Comparison of Global Longitudinal Strain Measurements among Nine Different Vendors: The EACVI/ASE Inter-Vendor Comparison Study. *J Am Soc Echocardiogr.* 2015;28(10):1171-81.
- [33] Yotti R, Bermejo J, Benito Y, Sanz-Ruiz R, Ripoll C, Martínez-Legazpi P, et al. Validation of noninvasive indices of global systolic function in patients with normal and abnormal loading conditions a simultaneous echocardiography pressure-volume catheterization study. *Circ Cardiovasc Imaging.* 2014;7(1):164-72.
- [34] Reant P, Metras A, Detaille D, Reynaud A, Diolez P, Jaspard-Vinassa B, et al. Impact of Afterload Increase on Left Ventricular Myocardial Deformation Indices. *J Am Soc Echocardiogr.* 2016;29(12):1217-28.
- [35] Ng ACT, Delgado V, Bertini M, Antoni ML, Van Bommel RJ, Van Rijnsoever EPM, et al. Alterations in multidirectional myocardial functions in patients with aortic stenosis and preserved ejection fraction: A two-dimensional speckle tracking analysis. *Eur Heart J.* 2011;32(12):1542-50.
- [36] Park JJ, Park JB, Park JH, Cho GY. Global Longitudinal Strain to Predict Mortality in Patients With Acute Heart Failure. *Journal of the American College of Cardiology.* 2018;71(18):1947-57.
- [37] Namazi F, van der Bijl P, Hirasawa K, Kamperidis V, van Wijngaarden SE, Mertens B, et al. Prognostic Value of Left Ventricular Global Longitudinal Strain in Patients With Secondary Mitral Regurgitation. *J Am Coll Cardiol.* 2020;75(7):750-8.

SUPPLEMENTARY MATERIAL

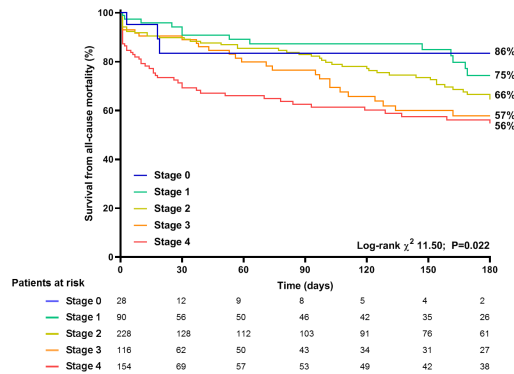


Figure 5: Kaplan-Meier survival curves for all-cause mortality per stage of cardiac damage after reclassification by incorporating LV GLS for patients censored at moment of aortic valve replacement (N = 616). GLS, global longitudinal strain; LV, left ventricular.

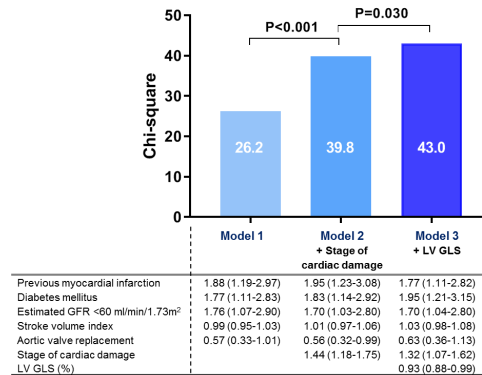


Figure 6: Incremental value of LV GLS on top of the proposed staging classification of cardiac damage in low-flow low-gradient severe AS patients (N = 162). The bar graphs depict the incremental prognostic value of LV GLS (Model 3) over the stages of cardiac damage and clinical parameters (Model 2) for all-cause mortality, as illustrated by a significant increase in χ^2 values on the y-axis. Data are presented as hazard ratios with corresponding 95% confidence intervals. AS, aortic stenosis; GFR, glomerular filtration rate; GLS, global longitudinal strain; LV, left ventricular.

Table 5: Clinical characteristics of total study population and per stage of cardiac damage after reclassification by incorporating LV GLS.

Variables	Total population (N = 616)	Stage 0 (N = 28)	Stage 1 (N = 90)	Stage 2 (N = 228)	Stage 3 (N = 116)	Stage 4 (N = 154)	P value*
Age (years)	74.4±10.7	73.1±9.9	71.2±13.6	75.9±10.0‡	76.4±10.3‡	76.6±9.5‡	0.001
Male gender, N (%)	359 (58)	17 (61)	41 (46)	127 (56)	71 (61)	103 (67)	0.019
Body mass index (kg/m ²)	26.3±4.4	27.8±4.7	25.9±3.3	26.8±4.7	26.1±4.5	25.7±4.5	0.059
Body surface area (m ²)	1.87±0.21	1.89±0.20	1.84±0.20	1.88±0.21	1.87±0.20	1.87±0.21	0.604
Hypertension, N (%)	414 (67)	18 (64)	59 (66)	162 (71)	82 (71)	93 (60)	0.228
Hypercholesterolemia, N (%)	348 (57)	19 (68)	49 (54)	126 (55)	69 (60)	85 (55)	0.682
Diabetes mellitus, N (%)	150 (24)	7 (25)	14 (16)	59 (26)	29 (25)	41 (27)	0.339
Coronary artery disease, N (%)	311 (51)	11 (39)	32 (36)	114 (50)	57 (49)	97 (63)	0.001
Previous MI, N (%)	126 (21)	3 (11)	9 (10)	36 (16)	27 (23)	51 (33)	<0.001
History of smoking, N (%)	214 (35)	13 (46)	30 (33)	76 (33)	43 (37)	52 (34)	0.680
COPD, N (%)	101 (16)	5 (18)	13 (14)	34 (15)	18 (16)	31 (20)	0.682
History of atrial fibrillation, N (%)	169 (27)	3 (11)	4 (4)	61 (27)	35 (30)	66 (43)	<0.001
NYHA functional class ≥III, N (%)	254 (42)	13 (46)	13 (15)	77 (35)	60 (52)	91 (59)	<0.001
Symptoms, N (%)							
Angina	260 (42)	13 (46)	43 (48)	100 (44)	54 (47)	50 (33)	0.070
Dyspnea	478 (78)	21 (75)	58 (64)	168 (74)	92 (79)	139 (90)	<0.001
Syncope	67 (11)	1 (4)	13 (14)	32 (14)	10 (9)	11 (7)	0.088
Estimated GFR (ml/min/1.73m ²)	62.2±20.6	68.7±17.7	67.6±22.6	65.5±19.5	58.8±20.4‡	55.7±19.5‡§	<0.001
<60 ml/min/1.73m ² , N (%)	287 (47)	10 (36)	32 (36)	95 (42)	61 (53)	89 (58)	0.002
Systolic BP (mmHg)	138.0±23.5	143.8±21.8	142.8±19.8	143.8±23.0	138.6±23.3	125.2±22.1	<0.001
Diastolic BP (mmHg)	73.8±13.4	74.5±13.7	75.5±9.8	75.4±14.0	72.6±13.4	71.2±13.8	0.020
Medication, N (%)							
Beta blocker	328 (53)	10 (36)	46 (51)	121 (53)	65 (56)	86 (56)	0.354
ACE inhibitor/ARB	306 (50)	15 (54)	35 (39)	124 (54)	51 (44)	81 (53)	0.077
Aspirin/thienopyridines	280 (46)	15 (54)	40 (44)	107 (47)	56 (48)	62 (40)	0.553
Oral anticoagulant	173 (28)	3 (11)	9 (10)	52 (23)	36 (31)	73 (47)	<0.001
Statin	355 (58)	18 (64)	54 (60)	131 (58)	67 (58)	85 (55)	0.895
Calcium channel blocker	145 (24)	6 (21)	20 (22)	63 (28)	24 (21)	32 (21)	0.485
Diuretics	311 (51)	6 (21)	21 (23)	107 (47)	74 (64)	103 (67)	<0.001

Continuous variables are presented as mean±SD or median [interquartile range]. Categorical variables are expressed as number (percentage). ACE, angiotensin-converting enzyme; ARB, angiotensin II receptor blocker; BP, blood pressure; COPD, chronic obstructive pulmonary disease; GFR, glomerular filtration rate; MI, myocardial infarction; NYHA, New York Heart Association. *P values depict differences between stages of cardiac damage and are calculated by ANOVA and Kruskal-Wallis H test for continuous data (with normal and non-normal distribution, respectively), and by χ^2 test for categorical data. ‡P value <0.05 vs. Stage 1 with Bonferroni's post hoc analysis. §P value <0.05 vs. Stage 2 with Bonferroni's post hoc analysis.

Table 6: Echocardiographic characteristics of total study population and per stage of cardiac damage after reclassification by incorporating LV GLS.

Variables	Total population (N = 616)	Stage 0 (N = 28)	Stage 1 (N = 90)	Stage 2 (N = 228)	Stage 3 (N = 116)	Stage 4 (N = 154)	P value*
Heart rate at TTE (bpm)	75.0±14.4	72.6±12.0	71.2±11.4	72.1±13.3	75.4±13.5	81.4±16.6†‡§	<0.001
Valve morphology, N (%)							<0.001
Tricuspid	555 (90)	24 (86)	70 (78)	208 (91)	110 (95)	143 (93)	
Bicuspid	61 (10)	4 (14)	20 (22)	20 (9)	6 (5)	11 (7)	
Atrial fibrillation at TTE, N (%)	72 (12)	0(0)	0 (0)	19 (8)	17 (15)	36 (23)	<0.001
LV end-diastolic diameter (mm)	48.9±8.3	41.5±4.1	45.4±6.4	47.4±6.4†	48.8±7.7††	54.5±9.6†‡§	<0.001
LV end-systolic diameter (mm)	35.6±9.9	28.6±4.8	31.1±6.4	32.2±6.8	35.9±8.5†‡§	44.4±11.4†‡§	<0.001
Septal wall thickness (mm)	12.9±2.3	11.3±1.5	12.4±1.8	13.2±2.2††	13.3±2.5†	12.6±2.5	<0.001
Posterior wall thickness (mm)	12.1±2.0	11.1±1.5	11.6±1.7	12.5±1.9††	12.4±2.3††	11.7±2.1§	<0.001
LV mass index (g/m ²)	129.4±37.1	84.2±14.2	110.5±26.3†	128.1±31.1††	135.0±40.4††	146.9±39.2†‡§	<0.001
LV end-diastolic volume (ml)	109.8±54.3	79.9±23.0	85.9±25.6	94.7±34.1	110.7±44.2††‡§	151.2±75.1††‡§	<0.001
LV end-systolic volume (ml)	59.9±46.1	29.7±13.1	36.9±22.0	42.9±20.3	60.2±31.6††‡§	103.9±63.4††‡§	<0.001
LV ejection fraction (%)	52.9±14.0	63.0±7.7	62.8±8.1	59.1±8.0†	50.6±10.8††‡§	37.7±13.7††‡§	<0.001
<50%, N (%)	203 (33)	0 (0)	4 (4)	25 (11)	51 (44)	123 (80)	<0.001
LV global longitudinal strain (%)	14.0±4.5	20.0±2.0	18.0±1.4†	16.3±2.2††	12.3±2.1††‡§	8.3±3.1††‡§	<0.001
Peak E-wave velocity (cm/s)	83.0±30.0	69.4±18.6	73.1±21.0	82.6±29.7	83.8±31.7	91.3±32.9††	<0.001
E' (cm/s)	5.1±2.1	6.4±1.5	4.7±1.5†	5.2±2.1	5.0±1.9†	5.0±2.6†	0.009
E/e' ratio	18.5±9.9	11.1±1.8	17.3±7.7†	17.9±9.8†	18.6±9.1†	21.4±11.6††‡§	<0.001
Left atrial volume index (ml/m ²)	41.0±17.5	22.9±5.3	24.6±6.3	43.3±17.2††	42.2±15.1††	50.0±17.1††‡§	<0.001
Significant MR, N (%)	56 (9)	0 (0)	0 (0)	17 (8)	11 (10)	28 (18)	<0.001
Systolic PAP (mmHg)	33.0±12.4	23.5±6.1	27.6±7.7	32.0±9.0†	33.7±12.8††	38.9±15.8††‡§	<0.001
Significant TR, N (%)	43 (7)	0 (0)	0 (0)	0 (0)	14 (12)	29 (19)	<0.001
TAPSE (mm)	20.2±3.9	22.3±2.2	21.8±2.9	21.9±3.1	20.6±2.8†§	16.2±3.5††‡§	<0.001
Mean AV gradient (mmHg)	42.3±16.6	39.5±13.3	44.0±13.6	46.0±16.7	45.6±17.0	33.6±15.1†§	<0.001
Peak aortic jet velocity (m/s)	4.0±0.7	3.9±0.6	4.1±0.6	4.2±0.7	4.2±0.7	3.6±0.8†§	<0.001
AVA (cm ²)	0.77±0.19	0.89±0.23	0.81±0.18	0.78±0.17†	0.74±0.20††	0.72±0.20††‡§	<0.001
Indexed AVA (cm ² /m ²)	0.41±0.10	0.48±0.13	0.45±0.09	0.42±0.09†	0.40±0.10††	0.39±0.10††‡§	<0.001
Low-flow low-gradient AS, N (%)	162 (26)	7 (25)	11 (12)	35 (15)	27 (23)	82 (53)	<0.001

Continuous variables are presented as mean±SD. Categorical variables are expressed as number (percentage). AS, aortic stenosis; AV, aortic valve; AVA, aortic valve area; bpm, beats per minute; LV, left ventricular; MR, mitral regurgitation; PAP, pulmonary arterial pressure; TAPSE, tricuspid annular plane systolic excursion; TR, tricuspid regurgitation; TTE, transthoracic echocardiogram. *P values depict differences between stages of cardiac damage and are calculated by ANOVA and Kruskal-Wallis test for continuous data (with normal and non-normal distribution, respectively), and by χ^2 test for categorical data. †P value <0.05 vs. Stage 0 with Bonferroni's post hoc analysis. ‡P value <0.05 vs. Stage 1 with Bonferroni's post hoc analysis. §P value <0.05 vs. Stage 2 with Bonferroni's post hoc analysis. ||P value <0.05 vs. Stage 3 with Bonferroni's post hoc analysis.



Table 7: Univariable and multivariable Cox proportional hazard analyses for all-cause mortality in patients with low-flow low-gradient severe AS (N = 162).

Variable	Univariate analysis		Multivariate analysis	
	Hazard ratio (95% CI)	P value	Hazard ratio (95% CI)	P value
Age (per 1 year increase)	1.021 (0.995-1.048)	0.112		
Male gender (yes/no)	1.534 (0.941-2.501)	0.086		
Coronary artery disease (yes/no)	1.534 (0.953-2.471)	0.078		
Previous myocardial infarction (yes/no)	1.914 (1.216-3.012)	0.005	1.766 (1.105-2.821)	0.017
History of atrial fibrillation (yes/no)	1.325 (0.843-2.082)	0.223		
Diabetes mellitus (yes/no)	1.772 (1.116-2.813)	0.015	1.953 (1.210-3.152)	0.006
NYHA functional class \geq III (yes/no)	1.390 (0.885-2.183)	0.153		
Estimated GFR <60 ml/min/1.73m ² (yes/no)	2.108 (1.311-3.390)	0.002	1.703 (1.035-2.802)	0.036
Diuretics (yes/no)	1.356 (0.841-2.187)	0.212		
Stroke volume index (per 1 ml/m ² increase)	0.994 (0.953-1.037)	0.782	1.027 (0.979-1.078)	0.280
Indexed AVA (per 0.01 cm ² /m ² increase)	3.414 (0.248-46.9)	0.359		
Surgical or transcatheter AVR (yes/no)	0.533 (0.311-0.912)	0.022	0.632 (0.355-1.127)	0.120
LV global longitudinal strain (per 1% increase)	1.096 (1.043-1.152)	<0.001	0.933 (0.875-0.993)	0.030
Stage of cardiac damage (per 1 stage increase)	1.400 (1.162-1.687)	<0.001	1.315 (1.067-1.621)	0.010

AVA, aortic valve area; AVR, aortic valve replacement; CI, confidence interval; GFR, glomerular filtration rate; NYHA, New York Heart Association; LV, left ventricular.