



**Universiteit
Leiden**
The Netherlands

Genomic characterization of *Mycobacterium leprae* to explore transmission patterns identifies new subtype in Bangladesh

Tio-Coma, M.; Avanzi, C.; Verhard, E.M.; Pierneef, L.; Hooij, A. van; Benjak, A.; ... ; Geluk, A.

Citation

Tio-Coma, M., Avanzi, C., Verhard, E. M., Pierneef, L., Hooij, A. van, Benjak, A., ... Geluk, A. (2020). Genomic characterization of *Mycobacterium leprae* to explore transmission patterns identifies new subtype in Bangladesh. *Frontiers In Microbiology*, 11. doi:10.3389/fmicb.2020.01220

Version: Publisher's Version
License: [Creative Commons CC BY 4.0 license](#)
Downloaded from: <https://hdl.handle.net/1887/3181905>

Note: To cite this publication please use the final published version (if applicable).



Genomic Characterization of *Mycobacterium leprae* to Explore Transmission Patterns Identifies New Subtype in Bangladesh

Maria Tió-Coma¹, Charlotte Avanzi^{2†}, Els M. Verhard¹, Louise Pierneef¹, Anouk van Hooij¹, Andrej Benjak^{2†}, Johan Chandra Roy³, Marufa Khatun³, Khorshed Alam³, Paul Corstjens⁴, Stewart T. Cole^{2,5}, Jan Hendrik Richardus⁶ and Annemieke Geluk^{1*}

OPEN ACCESS

Edited by:

Thomas Dandekar,
Julius Maximilian University
of Würzburg, Germany

Reviewed by:

Mallika Lavania,
National Institute of Virology (ICMR),
India

Nora Cardona-Castro,
Colombian Institute of Tropical
Medicine (ICMT), Colombia

*Correspondence:

Annemieke Geluk
a.geluk@lumc.nl

†Present address:

Charlotte Avanzi,
Mycobacteria Research Laboratories,
Colorado State University,
Fort Collins, CO, United States
Andrej Benjak,
Department for BioMedical Research,
University of Bern, Bern, Switzerland

Specialty section:

This article was submitted to
Infectious Diseases,
a section of the journal
Frontiers in Microbiology

Received: 10 March 2020

Accepted: 13 May 2020

Published: 16 June 2020

Citation:

Tió-Coma M, Avanzi C,
Verhard EM, Pierneef L, van Hooij A,
Benjak A, Roy JC, Khatun M, Alam K,
Corstjens P, Cole ST, Richardus JH
and Geluk A (2020) Genomic
Characterization of *Mycobacterium*
leprae to Explore Transmission
Patterns Identifies New Subtype
in Bangladesh.
Front. Microbiol. 11:1220.
doi: 10.3389/fmicb.2020.01220

¹ Department of Infectious Diseases, Leiden University Medical Center, Leiden, Netherlands, ² Global Health Institute, Ecole Polytechnique Fédérale de Lausanne, Lausanne, Switzerland, ³ Rural Health Program, The Leprosy Mission International Bangladesh, Nilphamari, Bangladesh, ⁴ Department of Cell and Chemical Biology, Leiden University Medical Center, Leiden, Netherlands, ⁵ Institut Pasteur, Paris, France, ⁶ Department of Public Health, Erasmus University Medical Center, Rotterdam, Netherlands

Mycobacterium leprae, the causative agent of leprosy, is an unculturable bacterium with a considerably reduced genome (3.27 Mb) compared to homologous mycobacteria from the same ancestry. In 2001, the genome of *M. leprae* was first described and subsequently four genotypes (1–4) and 16 subtypes (A–P) were identified providing means to study global transmission patterns for leprosy. In order to understand the role of asymptomatic carriers we investigated *M. leprae* carriage as well as infection in leprosy patients ($n = 60$) and healthy household contacts (HHC; $n = 250$) from Bangladesh using molecular detection of the bacterial element RLEP in nasal swabs (NS) and slit skin smears (SSS). In parallel, to study *M. leprae* genotype distribution in Bangladesh we explored strain diversity by whole genome sequencing (WGS) and Sanger sequencing. In the studied cohort in Bangladesh, *M. leprae* DNA was detected in 33.3% of NS and 22.2% of SSS of patients with bacillary index of 0 whilst in HHC 18.0% of NS and 12.3% of SSS were positive. The majority of the *M. leprae* strains detected in this study belonged to genotype 1D (55%), followed by 1A (31%). Importantly, WGS allowed the identification of a new *M. leprae* genotype, designated 1B-Bangladesh (14%), which clustered separately between the 1A and 1B strains. Moreover, we established that the genotype previously designated 1C, is not an independent subtype but clusters within the 1D genotype. Intraindividual differences were present between the *M. leprae* strains obtained including mutations in hypermutated genes, suggesting mixed colonization/infection or in-host evolution. In summary, we observed that *M. leprae* is present in asymptomatic contacts of leprosy patients fueling the concept that these individuals contribute to the current intensity of transmission. Our data therefore emphasize the importance of sensitive and specific tools allowing post-exposure prophylaxis targeted at *M. leprae*-infected or -colonized individuals.

Keywords: diagnosis, genotypes, strain subtype, WGS, leprosy, *M. leprae*, RLEP PCR, transmission

INTRODUCTION

Mycobacterium leprae and the more recently discovered *Mycobacterium lepromatosis* (Han et al., 2008) are the causative agents of leprosy in humans as well as animals (Truman et al., 2011; Sharma et al., 2015; Avanzi et al., 2016; Honap et al., 2018; Schilling et al., 2019b; Tió-Coma et al., 2019a). Leprosy is a complex infectious disease often resulting in severe, life-long disabilities and still poses a serious health threat in low- and middle income countries (World Health Organization, 2019). Despite the very limited *M. leprae* genome variability (Singh and Cole, 2011), the disease presents with characteristically different clinico-pathological forms (Ridley and Jopling, 1966) due to genetically dependent differences in the immune response to the pathogen, resulting in the WHO classification from paucibacillary (PB) to multibacillary (MB) leprosy (Kumar et al., 2017). Notwithstanding the efficacy of multidrug therapy (MDT), approximately 210,000 new cases are still annually diagnosed and this incidence rate has been stable over the last decade (World Health Organization, 2019). Aerosol transmission via respiratory routes is generally assumed to be the most probable way of bacterial dissemination (Bratschi et al., 2015; Araujo et al., 2016). Besides bacterial exposure other risk factors have been shown to be associated with development of leprosy such as genetic polymorphisms (Mira et al., 2004; Zhang et al., 2009; Wang et al., 2015; Sales-Marques et al., 2017), the clinical type of the leprosy index case within a household, immunosuppression (Moet et al., 2004), and nutritional factors (Dwivedi et al., 2019).

Mycobacterium leprae is closely related to *Mycobacterium tuberculosis*, however, its genome has undergone a reductive evolution resulting in a genome of only 3.27 Mb compared to the 4.41 Mb of *M. tuberculosis* (Cole et al., 2001). Part of the genes lost in *M. leprae* included vital metabolic activity, causing it to be an obligate intracellular pathogen which cannot be cultured in axenic media that requires support of a host to survive. This poses major limitations to obtain sufficient bacterial DNA for research purposes including whole genome sequencing (WGS). Nevertheless, in 2001 the genome of *M. leprae* was first published (Cole et al., 2001) leading to the classification of *M. leprae* into four main genotypes (1–4) (Monot et al., 2005) and subsequently further allocation into 16 subtypes (A–P) (Monot et al., 2009; Truman et al., 2011). The genome of *M. leprae* contains several repetitive elements such as RLEP which present 37 copies and has been widely applied in molecular diagnostics to specifically detect the presence of this mycobacterium (Donoghue et al., 2001; Truman et al., 2008; Martinez et al., 2011; Braet et al., 2018).

Single-nucleotide polymorphism (SNP) genotyping and WGS are powerful approaches to investigate pathogen transmission as well as bacterial dissemination and evolution through genome characterization (Monot et al., 2005, 2009; Han and Silva, 2014). The limited variation observed in the *M. leprae* genome permits the reconstruction of historic human migration patterns and the origin of *M. leprae* (Donoghue, 2019). Over the years, several studies have contributed to the detection and characterization of *M. leprae* genomes originating from patients all around the world (Monot et al., 2005, 2009; Benjak et al., 2018) as well as from ancient skeletons (Suzuki et al., 2010; Schuenemann et al.,

2013, 2018; Mendum et al., 2014; Krause-Kyora et al., 2018), red squirrels (Avanzi et al., 2016; Schilling et al., 2019a; Tió-Coma et al., 2019a), armadillos (Truman et al., 2011; Sharma et al., 2015), non-human primates (Honap et al., 2018), and soil (Lavania et al., 2006, 2008; Turankar et al., 2012, 2014, 2016, 2019; Tió-Coma et al., 2019b). Moreover, skeleton remains have been successfully applied to retrospectively assess whether individuals who contributed to the care of leprosy patients such as the priest Petrus Donders, had developed leprosy (Van Dissel et al., 2019). In the last few years, new tools were developed allowing direct sequencing of *M. leprae* from various types of clinical isolates (Avanzi et al., 2016; Benjak et al., 2018; Schuenemann et al., 2018). However, these methods were never applied on challenging samples such as slit skin smears (SSS) and nasal swabs (NS) containing a low amount of bacterial DNA compared to skin lesions of patients.

Household contacts of leprosy patients are a high risk group for developing the disease (Richardus et al., 2019), and might serve as asymptomatic carriers contributing to bacterial dissemination. PCR and quantitative PCR (qPCR) are reliable techniques to detect *M. leprae* DNA and have been proposed as tools for early diagnosis of leprosy, particularly among household contacts of newly diagnosed patients (Gama et al., 2018, 2019). In Brazil, *M. leprae* DNA has been detected in 15.9–42.4% of healthy household contacts (HHC) in SSS, 9.7–35.2% in blood (Gama et al., 2018; Santos et al., 2018) and 8.9–49.0% in NS (Brito e Cabral et al., 2013; Araujo et al., 2016; Carvalho et al., 2018). Other studies from India, Indonesia and Colombia reported 21% of *M. leprae* positivity in SSS of HHC (Turankar et al., 2014), 7.8% (van Beers et al., 1994) and 16.0–31.0% in NS (Cardona-Castro et al., 2008; Romero-Montoya et al., 2017).

Detection of host markers, such as serum IgM levels of anti-*M. leprae* phenolic glycolipid I (PGL-I), represents an alternative approach to diagnose infected individuals (Penna et al., 2016; van Hooij et al., 2017; Barbieri et al., 2019). However, although detection of *M. leprae* DNA as well as antibodies against PGL-I indicate infection with *M. leprae*, this does not necessarily result in disease. Thus, these tests alone are not sufficient to identify the complete leprosy spectrum (Spencer and Brennan, 2011; van Hooij et al., 2019).

Bangladesh is a leprosy endemic country reporting up to 3,729 new leprosy cases in 2018 (World Health Organization, 2019). However, *M. leprae* whole genomes ($n = 4$) from Bangladesh, have only been described in one study (Monot et al., 2009) in which genotypes 1A, 1C, and 1D were identified. To gain more insight into *M. leprae* genome variation and transmission routes in endemic areas in Bangladesh as well as the potential role of asymptomatic carriers, we explored the diversity and transmission of *M. leprae* in four districts of the northwest of Bangladesh. We collected SSS and NS of 31 leprosy patients with a high bacterial load as well as 279 of their household contacts and characterized *M. leprae* DNA by WGS or Sanger sequencing. The resulting genotypes were correlated to the subjects' GIS location. Additionally, this is the first study to examine *M. leprae* DNA detection in comparison to anti-PGL-I IgM levels in plasma measured by up-converting phosphor lateral flow assays (UCP-LFAs).

MATERIALS AND METHODS

Study Design and Sample Collection

Newly diagnosed leprosy patients (index case, $n = 31$) with bacteriological index (BI) ≥ 2 and 3–15 household contacts of each index case ($n = 279$) were recruited between July 2017 and May 2018 (**Supplementary Table S1** and **Supplementary Data S1**) in four districts of Bangladesh (Nilphamari, Rangpur, Panchagar and Thakurgaon). Patients with five or fewer skin lesions and BI 0 were grouped as PB leprosy. Patients with more than five skin lesions were grouped as MB leprosy and BI was determined. The prevalence in the districts where this study was performed was 0.9 per 10,000 and the new case detection rate 1.18 per 10,000 (Rural health program, the leprosy mission Bangladesh, yearly district activity report 2018).

For *M. leprae* detection and characterization, SSS from 2 to 3 sites of the earlobe and NS (tip wrapped with traditional fiber, CLASSIQSwabs, Copan, Brescia, Italy) were collected and stored in 1 ml 70% ethanol at -20°C until further use. For immunological analysis, plasma was collected (van Hooij et al., 2017, 2018, 2019).

Subjects included in the study were followed up for surveillance of new case occurrence for ≥ 24 months after sample collection.

DNA Isolation From Slit Skin Smears and Nasal Swabs

DNA was isolated using DNeasy Blood & Tissue Kit (Qiagen, Valencia, CA) as per manufacturer's instructions with minor modifications. Briefly, tubes containing 1 ml 70% ethanol and SSS were vortexed for 15 s. Slit skin smears were removed and tubes were centrifuged for 15 min at 14000 rpm. Supernatants were removed and buffer ATL (200 μl) and proteinase K (20 μl , Qiagen, provided in the Kit) added. NS were transferred to new microtubes and the microtubes containing the remaining ethanol were centrifuged at 14000 rpm for 15 min. Supernatants were removed and NS were inserted again in the tubes, prior addition of ATL buffer (400 μl) and proteinase K (20 μl). Slit skin smears and NS samples were incubated at 56°C for 1 h at 1100 rpm. Next, AL buffer (200 μl , Qiagen, provided in the Kit) was added and incubated at 70°C for 10 min at 1400 rpm. Column extraction was performed after absolute ethanol precipitation (200 μl) as per manufacturer's instructions. To avoid cross contamination tweezers were cleaned first with hydrogen peroxide and then with ethanol between samples.

RLEP PCR and qPCR

RLEP PCR (Donoghue et al., 2001) was performed as previously described (Tió-Coma et al., 2019b). Briefly, the 129 bp RLEP sequence was amplified in 50 μl by addition of 10 μl 5x Gotaq® Flexi buffer (Promega, Madison, WI), 5 μl MgCl_2 (25 mM), 2 μl dNTP mix (5 mM), 0.25 μl Gotaq® G2 Flexi DNA Polymerase (5 u/ μl), 5 μl (2 μM) forward and reverse

primers (**Supplementary Table S2**) and 5 μl template DNA, water (negative control) or *M. leprae* DNA (Br4923 or Thai-53 DNA, BEI Resources, Manassas, VA) as positive control. PCR mixes were subjected to 2 min at 95°C followed by 40 cycles of 30 s at 95°C , 30 s at 65°C and 30 s at 72°C and a final extension of 10 min at 72°C . PCR products (15 μl) were used for electrophoresis in a 3.5% agarose gel at 130 V. Amplified DNA was visualized by Midori Green Advance staining (Nippon Genetics Europe, Dueren, Germany) using iBright™ FL1000 Imaging System (Invitrogen, Carlsbad, CA).

Samples from index cases and a selection of contacts for sequencing were also evaluated by qPCR (Martinez et al., 2009). The mix included 12.5 μl TaqMan Universal Master Mix II (Applied Biosystems, Foster City, CA), 0.5 μl (25 μM) forward and reverse primers (**Supplementary Table S2**), 0.5 μl (10 μM) TaqMan probe (**Supplementary Table S2**) and 5 μl template DNA were mixed in a final volume of 25 μl . DNA was amplified using the following profile: 2 min at 50°C and 10 min at 95°C followed by 40 cycles of 15 s at 95°C and 1 min at 60°C with a QuantStudio 6 Flex Real-Time PCR System (Applied Biosystems). Presence of *M. leprae* DNA was considered if a sample was positive for RLEP qPCR with a cycle threshold (Ct) lower than 37.5 or was positive for RLEP PCR at least in two out of three indecently performed PCRs to avoid false positives.

Library Preparation and Enrichment

A total of 60 DNA extracts were selected for WGS, including 30 from SSS and 30 from NS (**Supplementary Figure S1** and **Supplementary Data S1**). At least one sample from each index case (MB leprosy patient) was selected as well as RLEP positive samples of HHC and MB or PB patients who were household contacts of the index case (selection based on Ct value and household overlap). For 12 subject both SSS and NS samples were selected for WGS. A maximum of 1 μg of DNA in a final volume of 50 μl was mechanically fragmented to 300 bp using the S220 Focused-ultrasonicator (Covaris) following the manufacturer's recommendations and cleaned-up using a 1.8 \times ratio of AMPure beads. Up to 1 μg of fragmented DNA was used to prepare indexed libraries using the Kapa Hyperprep kit (Roche) and the Kapa dual-indexed adapter kit as previously described (Benjak et al., 2018) followed by two rounds of amplification. All libraries were quantified using the Qubit fluorimeter (Thermo Fisher Scientific, Waltham, MA), and the fragment size distribution was assessed using a fragment analyzer.

Libraries were target enriched for the *M. leprae* genome using a custom MYbaits Whole Genome Enrichment kit (ArborBioscience) as previously described (Honap et al., 2018). Briefly, biotinylated RNA baits were prepared using DNA from *M. leprae* Br4923. A total of 1500 ng of each amplified library was used for enrichment. Each library was pooled prior to enrichment with another library with similar qPCR Ct value. Enrichment was conducted according to the MYbaits protocol with the hybridization being carried out at 65°C for 24 h. After elution, all pools were amplified using the Kapa amplification kit with universal P5 and P7 primers (Roche). All

amplification reactions were cleaned up using the AMPure beads (1× ratio).

Illumina Sequencing

Pools were multiplexed on one lane of a NextSeq instrument with a total amount of 20–30 million reads per pool. Some libraries were deep sequenced based on the mapping statistics obtained in the first run.

Raw reads were processed and aligned to *M. leprae* TN reference genome (GenBank accession number AL450380.1) as previously described using an in-house pipeline (Benjak et al., 2018). A minimum depth coverage of 5 was considered for further phylogenetic analysis.

Sequencing Analysis

Genome comparison was based on analysis of SNPs (analyzed with VarScan v2.3.9; Koboldt et al., 2012) and Indels (analyzed with Platypus v0.8.171; Rimmer et al., 2014) as formerly reported (Benjak et al., 2018). The newly sequenced *M. leprae* genomes were aligned with 232 genomes available in public databases (Schuenemann et al., 2018; Avanzi et al., 2020). Sites below 80% and above 20% alignment difference were also reported. A comparison to 259 *M. leprae* genomes (including 27 new genomes) allowed the identification of unique SNPs per index case. Each candidate SNP or Indel was checked manually on Integrative Genomics Viewer (Robinson et al., 2011).

Genotyping and Antimicrobial Resistance by Sanger Sequencing

To further characterize the *M. leprae* strains for which the whole genome sequence was not obtained, specific primers were designed to perform Sanger sequencing based on unique SNPs (Supplementary Tables S3, S4) of each index case strain. Additionally, Sanger sequencing was performed after amplifying several loci (Supplementary Table S2) to subtype the genomes based on standard the *M. leprae* classification (Monot et al., 2009; Truman et al., 2011) and to determine antimicrobial resistance to rifampicin (*rpoB*), dapsone (*folP1*) or ofloxacin (*gyrA*). Genotyping by Sanger sequencing was performed to all RLEP PCR positive samples (including samples obtained from leprosy patients and HHC) without a whole genome sequence with a depth coverage of ≥ 5 . PCRs were performed with 5 μ l of template DNA using the aforementioned PCR mixes. DNA was denatured for 2 min at 95°C, followed by 45 cycles of 30 s at 95°C, 30 s at 50–58°C and 30 s at 72°C and a final extension cycle of 10 min at 72°C. PCR products were resolved by agarose gel electrophoresis as explained above. PCR products showing a band were purified prior to sequencing using the Wizard SV Gel and PCR Clean-Up System (Promega). Sequencing was performed on the ABI3730xl system (Applied Biosystems) using the BigDye Terminator Cycle Sequencing Kit (Thermo Fisher Scientific). Sequences were analyzed using Bioedit v7.0.5.3.

Anti-PGL-I UCP-LFA

Up-converting phosphor lateral flow assays were performed using the LUMC developed LFA based on luminescent up-converting reporter particles for quantitative detection of anti-*M. leprae* PGL-I IgM as previously described (van Hooij et al., 2017, 2018, 2019). Plasma samples ($n = 308$, two samples excluded due to labeling mistake) were thawed and diluted (1:50) in assay buffer. Strips were placed in microtiter plate wells containing 50 μ l diluted samples and target specific UCP conjugate (PGL-I, 400 ng). Immunochromatography continued for at least 30 min until dry. Scanning of the LFA strips was performed by LFA strip readers adapted for measurement of the UCP label (UPCON; Labrox, Finland). Results are displayed as the Ratio (R) value between Test and Flow-Control signal based on relative fluorescence units (RFUs) measured at the respective lines. The threshold for positivity for the α PGL-I UCP-LFA was 0.10.

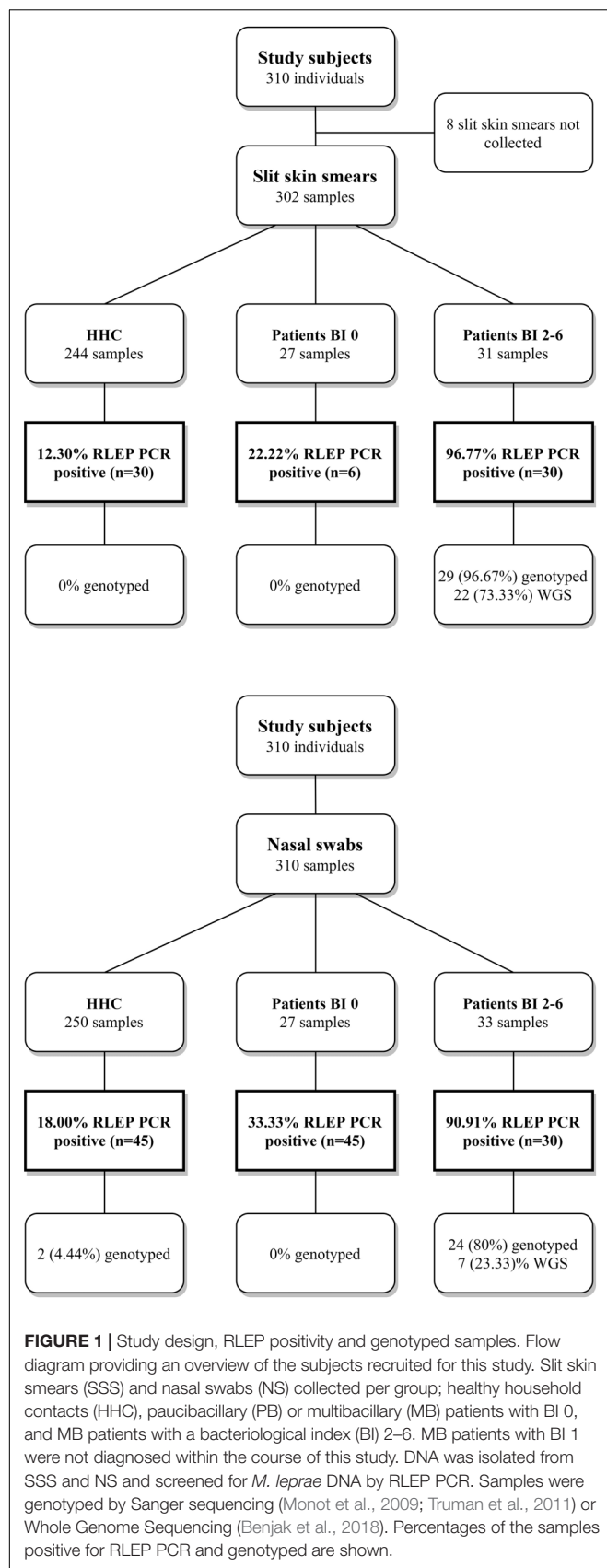
RESULTS

M. leprae Detection in Patients and Healthy Household Contacts

At diagnosis of the index cases and recruitment of contacts in this study out of 279 household contacts 250 presented no signs or symptoms of leprosy or other diseases (HHC), whereas 22 household contacts were diagnosed as PB and seven as MB patients (Supplementary Table S1 and Supplementary Data S1) and therefore were excluded from the HHC group.

Presence of *M. leprae* DNA was determined by RLEP PCR or qPCR in SSS and NS of leprosy patients and HHC (Figure 1 and Supplementary Data S1): as expected in MB patients with BI 2–6 *M. leprae* DNA was almost always detectable in both SSS (96.8%) and NS (90.9%). This was much lower in PB and MB patients with BI 0 ranging from 22.2% in SSS to 33.3% in NS. Positivity rates in HHC were not very different from those observed for PB and MB patients with BI 0, with 12.3% positive samples in SSS and 18.0% in NS. Showing a similar *M. leprae* carriage between HHC and patients with BI 0. Moreover, the overall Ct range was lower for SSS [16.3–37.1] compared to NS [20.1–39.4] showing that SSS contained more *M. leprae* DNA and is a preferred sample for its detection (Supplementary Data S1).

HHC ($n = 250$) were followed up clinically for ≥ 24 months after sample collection and four of them developed leprosy within the first year. RLEP PCR performed on DNA isolated before disease occurrence showed a positive result from SSS in one patient (5 months before diagnosis) and a positive result from NS in another (8 months before diagnosis). All of the new cases developed PB leprosy with BI of 0 and three were genetically related to the index case (parent and child of index case H03 and second degree relative of index case H30) and one was the spouse (index case H10).



Genome Typing and Antimicrobial Resistance

Mycobacterium leprae genomes of SSS and NS were genotyped by WGS or Sanger sequencing. A total of 60 samples (30 SSS and 30 NS) from MB and PB leprosy patients as well as HHC were selected for WGS with an RLEP qPCR Ct ranging from 16.2 to 37.2 (**Supplementary Data S1**). A total of 27 samples from 21 subjects (21 SSS and 6 NS) passed the library quality check and were successfully sequenced with a coverage ≥ 5 (**Supplementary Figure S1** and **Supplementary Table S5**). The limiting Ct value was 26.2 for SSS and 24.2 for NS.

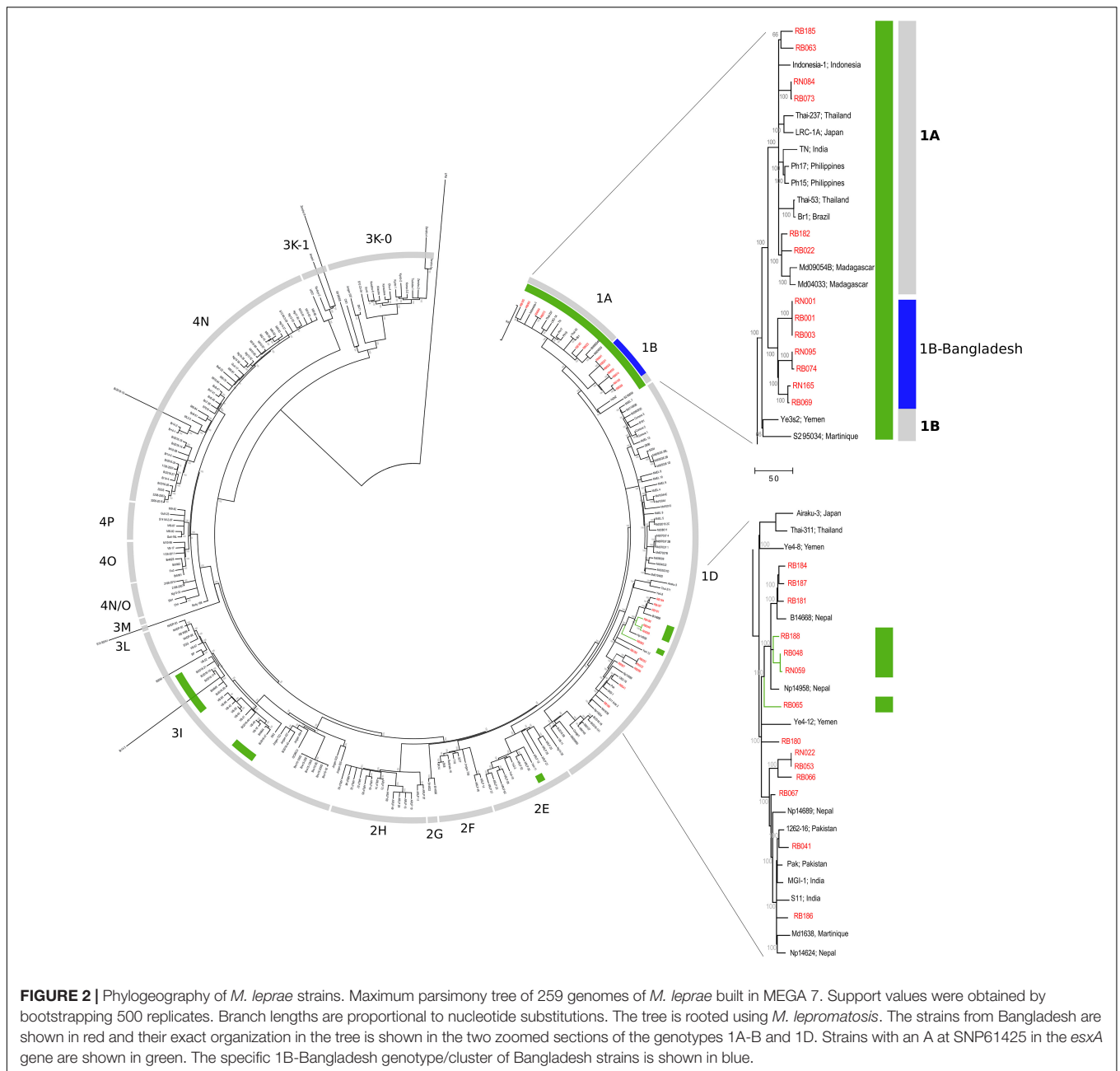
On applying the genotyping system described by Monot et al. (2009), Truman et al. (2011), the following genotypes were found for these 21 subjects: 1A ($n = 5$), 1B ($n = 4$), 1C ($n = 3$), and 1D ($n = 9$). Interestingly, the four newly sequenced 1B genotype strains do not cluster with the two previously described 1B strains from Yemen and Martinique (**Figure 2**). Instead, they form a new cluster in the phylogenetic tree located between genotypes the 1A and 1B, which we refer to as 1B-Bangladesh (**Figure 2**, blue and **Supplementary Data S1**). Using Sanger sequencing, the *M. leprae* strain for eight additional individuals were determined as 1A ($n = 4$) or 1D ($n = 4$). Three subjects, including two NS samples from HHC, carried genotype 1 but subtype could not be established due to lack of amplification of the subtyping loci (**Supplementary Data S1**).

The SNP used to differentiate genotype 1C (A61425G; Met90Thr, mutated in genotypes 1D and 2–4) is located at *esxA*. In contrast to previous observations (Monot et al., 2009; Truman et al., 2011), we found that this position is not phylogenetically informative as it is also found unmutated (A; Met) in strains from the genotype 3I and 2E (**Figure 2**, green and **Supplementary Data S2**). Moreover, the 1C strains clustered in the middle of the 1D group suggesting that the previously described genotype 1C is part of the 1D genotype.

Finally, antimicrobial resistance was assessed in all genotyped strains either by WGS or Sanger sequencing. The latter was successful on 18 samples for *rpoB*, five sample for *folP1* and 15 samples for *gyrA* (**Supplementary Data S1**). None of the strains with a complete genome harbored drug-resistance mutations. One NS sample containing a missense mutation in the *rpoB* gene (Ser456Thr) in 50% of the sequences potentially leading to antimicrobial resistance (World Health Organization, 2017) was identified by Sanger sequencing. Moreover, although not causing resistance, up to two silent mutations in three different positions of the *rpoB* gene relevant for antimicrobial resistance (432, 441, and 456) were also observed in several subjects.

Distribution and Possible Transmission of *M. leprae* Genotypes

The most prevalent *M. leprae* genotype in the studied area of Bangladesh is 1D, found in 55% of the individuals ($n = 16$, **Table 1** and **Supplementary Data S1**), followed by 1A in 31% ($n = 9$), and 1B-Bangladesh in 14% ($n = 4$). Genotype 1D is the most widely distributed throughout the whole area studied (**Figure 3**, blue and purple), whilst genotypes 1A and



the here identified genotype 1B-Bangladesh are only observed in the eastern area (green and orange, respectively). The latter genotype was found in four individuals: two from the same household and two unrelated subjects residing 56, 51, and 11 km from each other. However, due to privacy regulations on patient information to third parties it could not be established whether subjects in different households had had contact with any of the others.

In a total of four households the same *M. leprae* genotype was detected in two individuals (**Supplementary Data S1**). In the first household, both subjects were MB patients and WGS showed no genetic variation between both patients' genomes (RB001

and RB003, 1B-Bangladesh genotype, **Supplementary Data S2**). In the second household with two MB patients, the *M. leprae* whole genome was only obtained from the index case but the same genotype, 1A, and a strain-specific SNP of the index case (**Supplementary Tables S3, S4**) was also identified by Sanger sequencing in the other patient (RB182 and RB266). In the last two households, the genotype of strains from both MB index cases' were determined by WGS (RB030, genotype 1D) and, by Sanger sequencing (RB065, genotype 1D-*esxA*), while the *M. leprae* genotype 1 was located in the NS of both HHC but no further subtyping was possible.

TABLE 1 | *M. leprae* genotypes identified in Bangladesh.

Genotype	Number of individual	%
1A	9	31.0
1B-Bangladesh	4	13.8
1D	13	44.8
1D-esxA	3	10.4
1*	3	

M. leprae genotypes identified in patients and contacts from Bangladesh and the percentage of each subtype are shown. *M. leprae* DNA was isolated from slit skin smears (SSS) and/or nasal swabs (NS). Genotypes were determined by Whole Genome Sequencing (WGS) or Sanger sequencing according to Monot et al. (2009), Truman et al. (2011). The new subtype 1B-Bangladesh was identified by WGS and primers were then designed for use in Sanger sequencing (Supplementary Table S2). 1D-esxA is 1D subtype containing an A at SNP61425 in the esxA gene, traditionally grouped as 1C (Monot et al., 2009; Truman et al., 2011). This SNP is also found in strains from the genotype 3I and 2E (Figure 2, green). 1* are samples with genotype 1 for which the subtype could not be determined due to DNA concentration limit.

Comparison of *M. leprae* Genomes From SSS and NS

Mycobacterium leprae whole genomes of six patients were successfully recovered from both SSS and NS. The *M. leprae* genotypes obtained in each subject were in agreement between the two samples (Table 2). Genomic comparison showed no differences between DNA from SSS and NS for two patients: RB001-RN001 (genotype 1B-Bangladesh) and RB048-RN059 (genotype 1D-esxA, Figure 2 and Supplementary Data S2).

In a third patient (RB073-RN084, genotype 1A), both strains were identical except that in the NS strain 17% of 24 reads in *ml1512* harbored a T1824441C (Gly56Asp) (Table 2). Interestingly, *ml1512* which encodes a ribonuclease J is one of the most mutated genes among all *M. leprae* strains (Benjak et al., 2018) and mutations at this gene were also observed in two different patients: in the NS of RN022-RB053 (genotype 1D) 35% of 26 reads had a mutated allele (G1823127A; Ser494Leu) and 20% of 21 reads had an insertion of a C at position 1823613 probably leading to a deleterious frameshift; in the SSS of RB074-RN095 (genotype 1B-Bangladesh) 92% of 92 reads presented a missense mutation (G1823098A; Leu504Phe). Interestingly, RB074 harbored a G660474C mutation in *metK*, a probable methionine adenosyl-transferase, which was also found in 75% of 12 reads of the NS and is uniquely found in this subject's *M. leprae* genomes. Additionally, RN095 also displayed mutations at several positions in *ml1750* (a putative nucleotide cyclase): 48% of 21 reads had C2116695A (Pro100Thr), 20% of 20 reads had A2116670G (Gln108Arg) and 19% of 16 reads had C2116490T mutation (Arg168His). These positions were partially or totally mutated in other strains from different genotypes: SM1 (100% Pro100Ser; genotype 4), M19-81 (Mali, 30% Arg168His; genotype 4N) and Md05036 (Madagascar, 90% Gln108Arg, genotype 1D-Mada) (Benjak et al., 2018; Avanzi et al., 2020).

The patient with the *M. leprae* strains that were the most genetically different between the NS and SSS carried the genotype 1B-Bangladesh (RB069 and RN165). The NS strain had a mixed population in *glpQ* (29% of 76 reads C9231T, Leu34Phe) and *ml1752* (15% of 94 reads C2121552T, Val226Ile). These genes

encode a glycerophosphoryl diester phosphodiesterase, a putative nucleotide cyclase and a conserved hypothetical protein. Notably, *ml1752* is also one of the most hypermutated genes in *M. leprae* (Benjak et al., 2018).

For 11 patients a whole genome sequence was recovered only from SSS but Sanger sequencing was successfully performed to identify the subtype in NS. The same subtype observed in SSS was also found in the NS of these 11 patients. Moreover, unique *M. leprae* SNPs identified in the genomes of the SSS (Supplementary Tables S3, S4) were also detected in seven of the genomes of the NS of these patients (Supplementary Data S1).

Combining Host and Pathogen Detection

Anti-PGL-I IgM levels were determined in plasma of 308 subjects. All MB patients with BI 2-6 ($n = 33$) showed high levels for anti-PGL-I IgM (Table 3) in line with the general consensus (Geluk et al., 2011; van Hooij et al., 2017). Out of the patients (both MB and PB) with BI 0 ($n = 27$), nine (33.3%) were positive for anti-PGL-I IgM. Similarly, 36.8% of HHC showed positivity ($n = 92$). From these 92 positive individuals, 70 were neither positive for SSS nor NS RLEP PCR (Supplementary Data S1).

Of the four contacts who developed leprosy within the first year after sample collection, two were positive for anti-PGL-I IgM whilst negative for RLEP PCRs 10 and 12 months before diagnosis. Since the two other subjects had a positive RLEP PCR in SSS or NS 5 or 8 months before diagnosis, it can be concluded that all of the new cases showed positivity either for host- or pathogen-associated diagnostics 5-12 months before developing disease.

Individual anti-PGL-I levels were compared to RLEP Ct values in SSS and NS samples (Figure 4), showing an expected negative correlation between anti-PGL-I ratio and Ct value since both values are associated with BI. A subtle difference can be observed in the correlation between anti-PGL-I IgM levels and RLEP Ct if the qPCR was performed on either SSS or NS DNA, with a coefficient of determination (R^2) 0.73 and 0.69, respectively.

DISCUSSION

In this study we investigated *M. leprae* transmission patterns in Bangladesh by detecting and sequencing *M. leprae* DNA derived from SSS and NS of patients and their household members. Our data represents the first report of *M. leprae* DNA detection in HHC from Bangladesh. We observed moderate positivity in HHC which was similar to positivity of leprosy patients with BI 0. A new genotype, 1B-Bangladesh, was sequenced and we showed that the previously described 1C genotype is part of the 1D group. Additionally, a negative correlation between RLEP Ct values indicating the amount of *M. leprae* DNA and anti-PGL-I IgM levels was observed.

Mycobacterium leprae DNA detection frequency in HHC from Bangladesh (12.3% in SSS and 18.0% in NS) was in line with previous studies conducted in several hyperendemic areas of Brazil, Colombia and Indonesia (van Beers et al., 1994; Cardona-Castro et al., 2008; Brito e Cabral et al., 2013; Romero-Montoya et al., 2017; Carvalho et al., 2018; Gama et al., 2018). In India

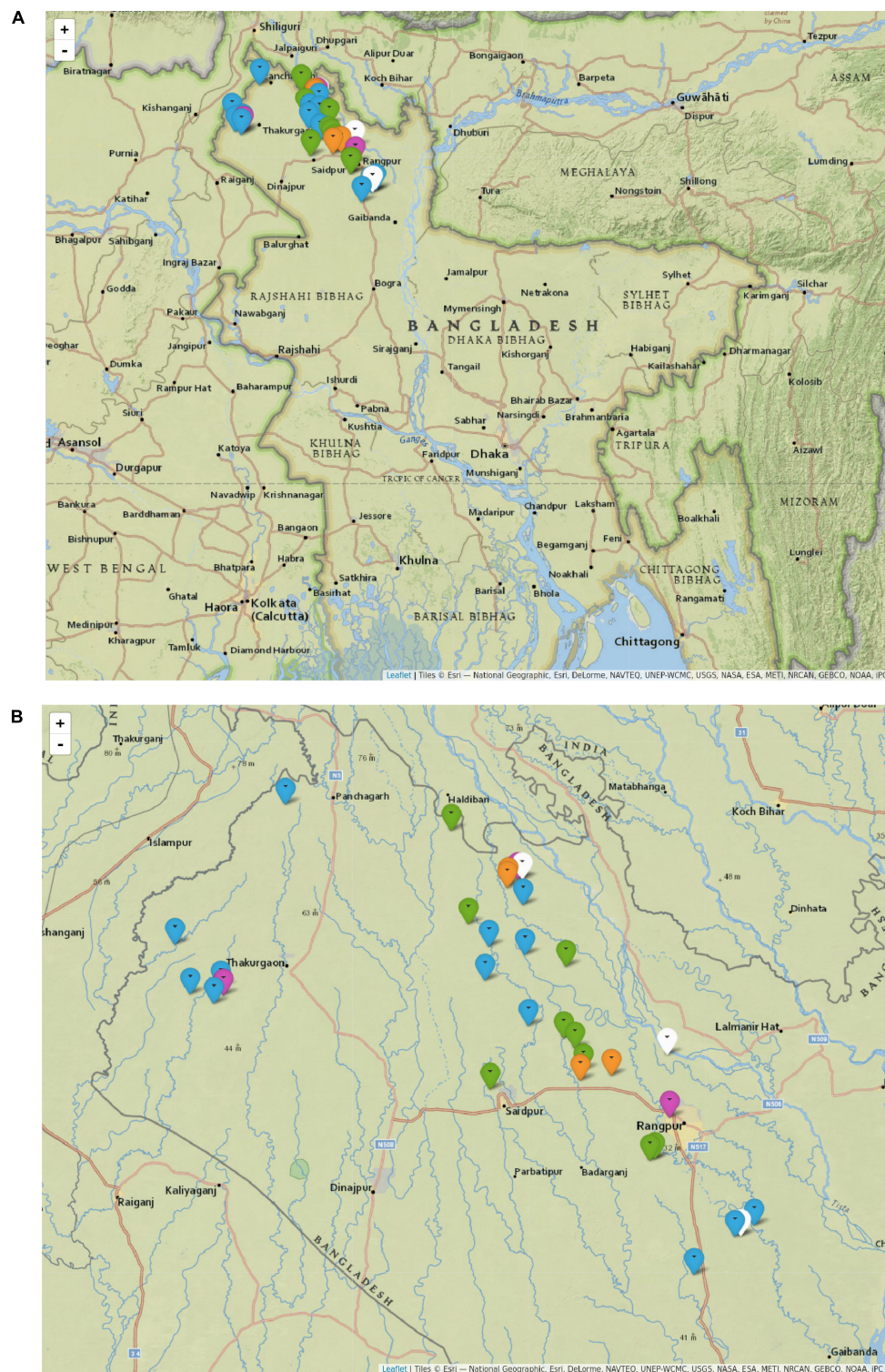


FIGURE 3 | Distribution of *M. leprae* genotypes in Bangladesh. Map of Bangladesh including markers indicating the residence of every subject with at least one sample genotyped for *M. leprae* (A), and zoomed into the area of interest (B). Each marker indicates an individual for whom *M. leprae* genotype was determined, either from slit skin smear, nasal swab or both samples. Genotype 1A is shown in green, 1B-Bangladesh in orange, 1D in blue, 1D-esxA in purple and 1* in white. 1D-esxA is 1D subtype containing an A at SNP61425 in the *esxA* gene, formerly grouped as 1C (Monot et al., 2009; Truman et al., 2011). 1* are samples with genotype 1 for which the subtype could not be determined. The figure was drawn in R (v3.4.3) with the package *leaflet* (v2.0.2) using maps from Esri – National Geographic with permission. Scale Not Given. “National Geographic World Map.” December 13, 2011. <http://www.arcgis.com/home/item.html?id=b9b1b422198944fbbd5250b3241691b6> (September 2, 2019).

TABLE 2 | Intraindividual *M. leprae* genomic differences.

Samples	Genotype	Mutation and amino-acid change	Genomic region	NS		SSS		Other genomes with similar position mutated (variant, % reads, genotype)
				% reads	Aligned reads	% reads	Aligned reads	
RB073-RN084	1A	T1824441C; Gly56Asp	<i>m11512</i>	17%	24	-	-	-
RB053-RN022	1D	G1823127A; Ser494Leu 1823613_1823614insC; Asp332fs	<i>m11512</i> <i>m11512</i>	35% 20%	26 21	- -	- -	MI10-98 (Ser494Ala, 95%, 4N) ARLP-23 (Asp332fs, 80%, 2E)
RB074-RN095	1B- Bangladesh	G1823098A; Leu504Phe G660474C; Val252Leu C2116695A; Pro100Thr A2116670G; Gln108Arg	<i>m11512</i> <i>metK</i> <i>m11750</i> <i>m11750</i>	- 75% 48% 20%	- 12 21 20	92% 100% - -	92 92 - -	SM1, (Pro100Ser, 100%, 4N/O) LRC-1A (Gln108His, 100%, 1A) Md0536 (Gln108Arg 90%, 1D-Mada)
		C2116490T; Arg168His	<i>m11750</i>	19%	16	-	-	Br14-3 (5 Arg168Cys, 1%, 3I) Arg168His; Br2016-17 (22%, 3I); Comore-3 (36%; 1D-Mada); MI9-81 (29%; 4N)
RB069-RN165	1B- Bangladesh	C95231T; Leu34Phe C2121552T; Val226Ile	<i>glpQ</i> <i>m11752</i>	29% 15%	76 94	- -	- -	-

Genomic differences between *M. leprae* genomes obtained from slit skin smears (SSS; RB) and nasal swabs (NS; RN) of the same MB patient. The table shows the percentage of mutated **non-duplicated** reads and the total number of **non-duplicated** reads aligned at the position of the mutation for each sample type. Several positions were partially or totally mutated in other *M. leprae* strains from different genotypes. dup, duplication; *, stop; ins, insertion; del, deletion.

TABLE 3 | Anti-PGL-I IgM positivity.

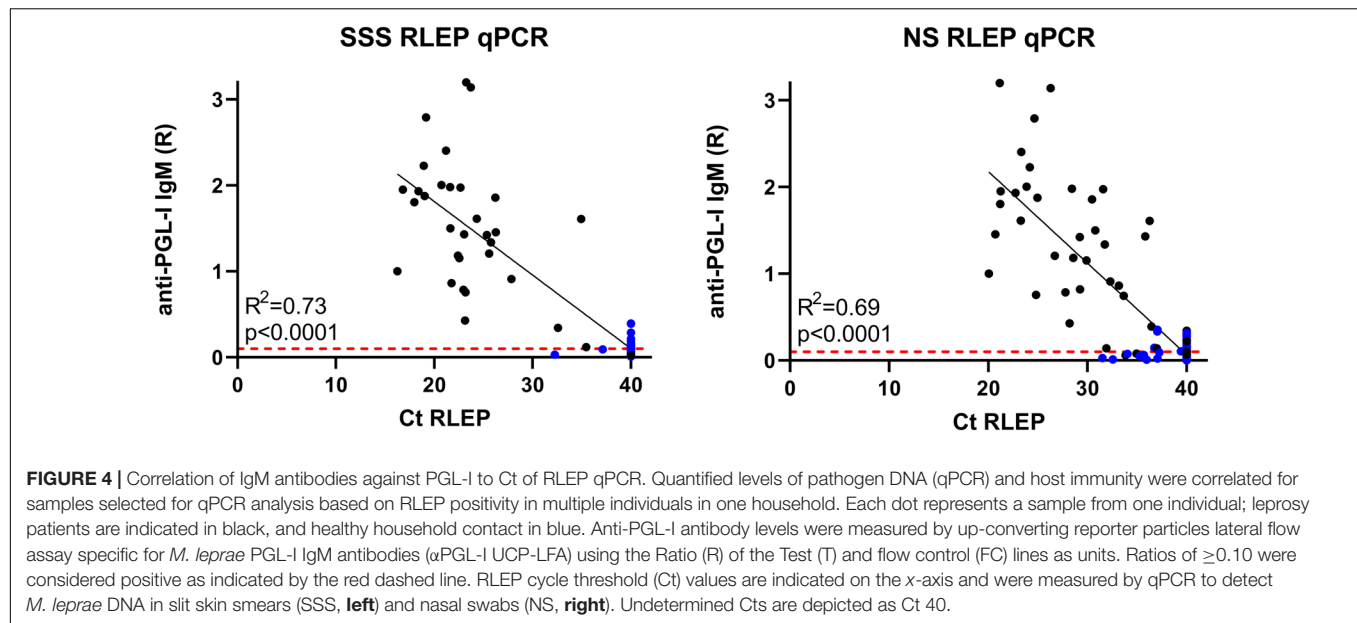
Genotype	Number of positive individual	% of positivity
MB patients BI 2-6 (<i>n</i> = 33)	33	100.0
Patients BI 0 (<i>n</i> = 27)	9	33.3
Healthy household contacts (<i>n</i> = 250)	9	36.8

Anti-PGL-I antibody levels were measured by up-converting phosphor lateral flow assay specific for *M. leprae* PGL-I IgM antibodies (UCP-LFA) using the Ratio (R) of the Test (T) and flow control (FC) lines as units. Ratios of ≥ 0.10 were considered positive.

higher positivity (21.0%) in SSS of HHC was reported (Turankar et al., 2014) whereas in two Brazilian studies from Uberlandia, up to 42.4% positivity in SSS (Santos et al., 2018) and 49.0% in NS (Araujo et al., 2016) were observed. Three factors may limit the translation of these high positive results from India and Brazil to our study: (i) the sample sizes of the Indian (Turankar et al., 2014) and one of the Brazilian studies (Araujo et al., 2016) were smaller (*n* = 28 and *n* = 104, respectively vs. *n* = 250 HHC in this study); (ii) we conducted a more stringent approach by testing the samples in three independent PCRs; and (iii) the epidemiology and incidence of MB cases in India and Brazil differ from the studied area in Bangladesh where MB leprosy cases occur less frequently than PB and also usually display a low BI (Richardus et al., 2017; van Hooij et al., 2019).

Mycobacterium leprae DNA in the nose does not indicate disease but (transient) colonization whilst presence of *M. leprae* in SSS indicates infection. Thus, the higher RLEP PCR positivity in NS compared to SSS in patients with BI 0 and HHC likely represents the (virtual) absence of bacteria causing infection in these individuals despite colonization.

A longitudinal study conducted in Brazil (Manta et al., 2019), investigated SSS from 995 HHC by qPCR including follow-up for at least 3 years with occurrence of five new cases. The authors reported 20% qPCR positivity in HHC representing future new cases compared to 9% in HHC without disease. However, this difference was not significant. In line with that study, we found that *M. leprae* DNA detection was slightly higher (25% vs. 18% in NS and 25% vs. 12% in SSS) in contacts who developed disease compared to those who did not. Additionally, we determined anti-PGL-I IgM levels, which correlated well with Ct qPCR values. Notwithstanding this correlation, serology provided added value: when positivity in any of the three techniques was considered (NS PCR, SSS PCR, or anti PGL-I), all of the contacts (*n* = 4) who developed leprosy within the first year after sample collection, were identified. In agreement with this, a combination of host and pathogen markers was previously integrated in a machine learning model using qPCR and serological data (antibodies against LID-1 or ND-O-LID) (Gama et al., 2019) to identify prospective leprosy patients among contacts leading to an increased sensitivity in diagnosis, particularly in PB leprosy. It is of note that in our study, three of the four contacts who developed leprosy were genetically related to the index cases in their households, stressing the previously described role of genetic inheritance in the development of



leprosy (Mira et al., 2004; Zhang et al., 2009; Wang et al., 2015; Sales-Marques et al., 2017; Uaska Sartori et al., 2020). For this reason, the association between leprosy and the genetics of this Bangladeshi population is currently being studied.

Genotype 1 was identified in all the *M. leprae* genomes retrieved from Bangladesh, consistent with previous data from Monot et al. (2009). In Bangladesh, leprosy was likely introduced through the southern Asian route (genotype 1) leading to the spread of *M. leprae* into the Indian subcontinent, Indonesia and the Philippines (Monot et al., 2009; Benjak et al., 2018). Subtype 1D was predominantly present in Bangladesh but in addition we detected 1A and identified a new 1B-Bangladesh genotype. The presence of multiple subtypes of *M. leprae* genotype 1 in Bangladesh is in line with previous studies in South Asian countries such as India, Nepal, Thailand, Indonesia and Pakistan (Monot et al., 2009; Benjak et al., 2018). The new 1B-Bangladesh genotype is thus far restricted to Bangladesh and two of the four individuals carrying this strain were part of the same household whilst the other two did not have any relationship with each other and were located in different areas with a distance of up to 56 km between them. This suggests that this genotype could be a common subtype in Bangladesh although additional studies are required to confirm this. Thus, it is of interest to include the 1B-Bangladesh SNP specific primers in future epidemiological studies, particularly in other (neighboring) Asian countries such as India where genotype 1 is widely established (Monot et al., 2009).

In contrast to the general belief (Monot et al., 2009; Truman et al., 2011), we observed that subtype 1C does not form an independent subtype but actually belongs to subtype 1D. SNP61425 used to distinguish genotypes 1A–C is located at *esxA* encoding the virulence factor ESAT-6 (Monot et al., 2009). The *Esx* protein family also revealed high diversity in the more pathogenic mycobacterium, *M. tuberculosis* (Uplekar et al., 2011), and is involved in host-pathogen interaction. Of note is that

ESAT-6 (ML0049) is a potent T-cell antigen (Geluk et al., 2002, 2004), thus mutations in *esxA* gene might indicate drift due to immune pressure potentially explaining the occurrence of mutations at SNP61425 in different genotypes.

In a recent survey in 19 countries during 2009–2015 (Cambau et al., 2018), 8% of the cases presented mutations resulting in antimicrobial resistance and resistance to up to two different drugs was detected. In our study, which is the first investigating *M. leprae* drug resistance in Bangladesh, we detected no resistance by WGS, however, a partial missense mutation in the codon for Ser456 of the *rpoB* gene potentially leading to rifampicin resistance ($n = 1$) was observed by Sanger sequencing. This could be the result of a mixed infection or an emerging mutation of the *M. leprae* strain occurring in the patient. Silent mutations in the *rpoB* gene were detected in several locations, which indicates that mutations do occur, and this may eventually lead to missense mutations conferring antimicrobial resistance. However, drug resistance is not only induced by genetic mutations in drug targets, efflux systems resulting in antimicrobial resistance have also been described for *M. leprae* (Machado et al., 2018). This mechanism of drug resistance is unnoticed in genomic tests and needs to be further investigated for leprosy especially in the light of the huge efforts recently initiated and WHO-endorsed for post-exposure prophylaxis (PEP) using antibiotic regimens (Barth-Jaeggi et al., 2016; Mieras et al., 2018; Richardus et al., 2019).

Despite our finding that NS samples were more frequently positive for *M. leprae* DNA, recovery of *M. leprae* whole genomes from SSS has proven to be more successful than from NS. This is due to the higher number of bacteria in SSS of patients. However, the importance of genotyping NS as well as skin biopsies or SSS to better understand transmission has been previously discussed (Fontes et al., 2017), as the nasal respiratory route remains one of the most plausible modes of infection (Bratschi et al., 2015; Araujo et al., 2016). In a recent study, skin biopsies and NS

of patients were compared by VNTR typing and the authors found that out of 38 patients, differences between SSS and NS in seven loci were observed in 33 patients (Lima et al., 2016). Although the *M. leprae* genomes from SSS and NS analyzed in our study were almost identical, we observed that genomes obtained from NS harbored more mutations, especially in previously reported (Benjak et al., 2018) hypermutated genes. This could be an indication of in-host evolution in the nasal mucosa, mixed infection or mixed colonization. Thus, it may imply that colonization occurred with two different strains causing a co-infection or that one is present, likely from a later colonization, but does not cause the disease.

The presence of mixed infections emphasizes once more the importance of monitoring asymptomatic carriers, who may contribute to the spread of the pathogen. Therefore, providing PEP only to the (close) contacts of leprosy patients might not be sufficient to stop transmission. Instead, an approach including the entire community but targeting only individuals testing positive for *M. leprae* DNA or host immune markers associated to *M. leprae* infection, would represent a preferred strategy for PEP.

AUTHOR'S NOTE

This manuscript has been released as a pre-print at medRxiv (Tió-Coma et al., 2020).

DATA AVAILABILITY STATEMENT

Sequence data are available from the NCBI Sequence Read Archive (SRA) under the bioprojects PRJNA605605 (<https://www.ncbi.nlm.nih.gov/bioproject/PRJNA605605>) and PRJNA592722 (<https://www.ncbi.nlm.nih.gov/bioproject/PRJNA592722>), biosamples SAMN14072760-775 and SAMN13438761-771.

ETHICS STATEMENT

The studies involving human participants were reviewed and approved by the National Research Ethics Committee (BMRC/NREC/2016-2019/214). Written informed consent to participate in this study was provided by the participants' legal guardian/next of kin.

AUTHOR CONTRIBUTIONS

AG, MT-C, and JR conceived the study. MT-C and JR contributed to the data curation. MT-C, CA, AH, and AB

contributed to the formal analysis. AG and JR acquired funding. MT-C, CA, EV, LP, and AH investigated the study. MK, KA, PC, and SC contributed to the resources. AG supervised the study. MT-C wrote the original draft. MT-C and AG wrote, reviewed, and edited the manuscript. All authors reviewed, discussed, and agreed with the final manuscript.

FUNDING

This study was supported by an R2STOP Research grant from effect:hope, Canada and The Mission to End Leprosy, Ireland; the Order of Malta-Grants-for-Leprosy-Research (MALTALEP) to AG; the Foundation Raoul Follereau and the Swiss National Science Foundation Grant IZRJZ3_164174 to SC; the Q.M. Gastmann-Wichers Foundation to AG; and the Leprosy Research Initiative (LRI) together with the Turing Foundation (ILEP#703.15.07). The funders had no role in study design, data collection and analysis, decision to publish, or preparation of the manuscript.

ACKNOWLEDGMENTS

The authors gratefully acknowledge all patients and control participants. LUMC, Erasmus MC, and TLMI-B are part of the IDEAL (Initiative for Diagnostic and Epidemiological Assays for Leprosy) Consortium.

SUPPLEMENTARY MATERIAL

The Supplementary Material for this article can be found online at: <https://www.frontiersin.org/articles/10.3389/fmicb.2020.01220/full#supplementary-material>

FIGURE S1 | Samples analyzed by whole genome sequencing.

TABLE S1 | Cohort characterization.

TABLE S2 | Primers and probes used in the study.

TABLE S3 | *M. leprae* strain-specific SNPs.

TABLE S4 | PCR primers for *M. leprae* strain-specific SNPs.

TABLE S5 | WGS results.

DATA S1 | Overall subject and sample information, PCR, quantitative PCR (qPCR), genotyping and antimicrobial resistance results.

DATA S2 | SNPs identified in 259 *M. leprae* genomes, including 27 genomes from this study.

REFERENCES

- Araujo, S., Freitas, L. O., Goulart, L. R., and Goulart, I. M. (2016). Molecular evidence for the aerial route of infection of *Mycobacterium leprae* and the role of asymptomatic carriers in the persistence of leprosy. *Clin. Infect. Dis.* 63, 1412–1420. doi: 10.1093/cid/ciw570
- Avanzi, C., Del-Pozo, J., Benjak, A., Stevenson, K., Simpson, V. R., Busso, P., et al. (2016). Red squirrels in the British Isles are infected with leprosy bacilli. *Science* 354, 744–747. doi: 10.1126/science.aah3783
- Avanzi, C., Lecorché, E., Rakotomalala, F. A., Benjak, A., Rabenja, F. R., Ramarozatovo, L. S., et al. (2020). Population genomics of *Mycobacterium*

- leprae reveals a new genotype in Madagascar and Comoros. *Front. Microbiol.* doi: 10.3389/fmicb.2020.00711 [Epub ahead print].
- Barbieri, R. R., Manta, F. S. N., Moreira, S. J. M., Sales, A. M., Nery, J. A. C., Nascimento, L. P. R., et al. (2019). Quantitative polymerase chain reaction in paucibacillary leprosy diagnosis: a follow-up study. *PLoS Negl. Trop. Dis.* 13:e0007147. doi: 10.1371/journal.pntd.0007147
- Barth-Jaeggli, T., Steinmann, P., Mieras, L., van Brakel, W., Richardus, J. H., Tiwari, A., et al. (2016). Leprosy post-exposure prophylaxis (LPEP) programme: study protocol for evaluating the feasibility and impact on case detection rates of contact tracing and single dose rifampicin. *BMJ Open* 6:e013633. doi: 10.1136/bmjopen-2016-013633
- Benjak, A., Avanzi, C., Singh, P., Loiseau, C., Girma, S., Busso, P., et al. (2018). Phylogenomics and antimicrobial resistance of the leprosy bacillus *Mycobacterium leprae*. *Nat. Commun.* 9:352. doi: 10.1038/s41467-017-02576-z
- Braet, S., Vandellannoote, K., Meehan, C. J., Brum Fontes, A. N., Hasker, E., Rosa, P. S., et al. (2018). The repetitive element RLEP is a highly specific target for detection of *Mycobacterium leprae*. *J. Clin. Microbiol.* 56:e01924-17. doi: 10.1128/jcm.01924-17
- Bratschi, M. W., Steinmann, P., Wickenden, A., and Gillis, T. P. (2015). Current knowledge on *Mycobacterium leprae* transmission: a systematic literature review. *Lepr. Rev.* 86, 142–155.
- Brito e Cabral, P., Junior, J. E., de Macedo, A. C., Alves, A. R., Gonçalves, T. B., Brito e Cabral, T. C., et al. (2013). Anti-PGL1 salivary IgA/IgM, serum IgG/IgM, and nasal *Mycobacterium leprae* DNA in individuals with household contact with leprosy. *Int. J. Infect. Dis.* 17, e1005–e1010. doi: 10.1016/j.ijid.2013.05.011
- Cambau, E., Saunderson, P., Matsuoka, M., Cole, S. T., Kai, M., Suffys, P., et al. (2018). Antimicrobial resistance in leprosy: results of the first prospective open survey conducted by a WHO surveillance network for the period 2009–15. *Clin. Microbiol. Infect.* 24, 1305–1310. doi: 10.1016/j.cmi.2018.02.022
- Cardona-Castro, N., Beltran-Alzate, J. C., and Manrique-Hernandez, R. (2008). Survey to identify *Mycobacterium leprae*-infected household contacts of patients from prevalent regions of leprosy in Colombia. *Mem. Inst. Oswaldo Cruz* 103, 332–336. doi: 10.1590/s0074-02762008000400003
- Carvalho, R. S., Foschiani, I. M., Costa, M., Marta, S. N., and da Cunha Lopes Virmond, M. (2018). Early detection of *M. leprae* by qPCR in untreated patients and their contacts: results for nasal swab and palate mucosa scraping. *Eur. J. Clin. Microbiol. Infect. Dis.* 37, 1863–1867. doi: 10.1007/s10096-018-3320-9
- Cole, S. T., Eiglmeier, K., Parkhill, J., James, K. D., Thomson, N. R., Wheeler, P. R., et al. (2001). Massive gene decay in the leprosy bacillus. *Nature* 409, 1007–1011.
- Donoghue, H. D. (2019). Tuberculosis and leprosy associated with historical human population movements in Europe and beyond - an overview based on mycobacterial ancient DNA. *Ann. Hum. Biol.* 46, 120–128. doi: 10.1080/03014460.2019.1624822
- Donoghue, H. D., Holton, J., and Spigelman, M. (2001). PCR primers that can detect low levels of *Mycobacterium leprae* DNA. *J. Med. Microbiol.* 50, 177–182. doi: 10.1099/0022-1317-50-2-177
- Dwivedi, V. P., Banerjee, A., Das, I., Saha, A., Dutta, M., Bhardwaj, B., et al. (2019). Diet and nutrition: an important risk factor in leprosy. *Microb. Pathog.* 137:103714. doi: 10.1016/j.micpath.2019.103714
- Fontes, A. N. B., Lima, L., Mota, R. M. S., Almeida, R. L. F., Pontes, M. A., Gonçalves, H. S., et al. (2017). Genotyping of *Mycobacterium leprae* for better understanding of leprosy transmission in Fortaleza, Northeastern Brazil. *PLoS Negl. Trop. Dis.* 11:e0006117. doi: 10.1371/journal.pntd.0006117
- Gama, R. S., Gomides, T. A. R., Gama, C. F. M., Moreira, S. J. M., de Neves Manta, F. S., de Oliveira, L. B. P., et al. (2018). High frequency of *M. leprae* DNA detection in asymptomatic household contacts. *BMC Infect. Dis.* 18:153. doi: 10.1186/s12879-018-3056-2
- Gama, R. S., Souza, M. L. M., Sarno, E. N., Moraes, M. O., Gonçalves, A., Stefani, M. M. A., et al. (2019). A novel integrated molecular and serological analysis method to predict new cases of leprosy amongst household contacts. *PLoS Negl. Trop. Dis.* 13:e0007400. doi: 10.1371/journal.pntd.0007400
- Geluk, A., Duthie, M. S., and Spencer, J. S. (2011). Postgenomic *Mycobacterium leprae* antigens for cellular and serological diagnosis of *M. leprae* exposure, infection and leprosy disease. *Leprosy Rev.* 82, 402–421.
- Geluk, A., van Meijgaarden, K. E., Franken, K. L. M. C., Subronto, Y. W., Wiele, B., Arend, S. M., et al. (2002). Identification and characterization of the ESAT-6 homologue of *Mycobacterium leprae* and T-cell cross-reactivity with *Mycobacterium tuberculosis*. *Infect. Immun.* 70, 2544–2548. doi: 10.1128/iai.70.5.2544-2548.2002
- Geluk, A., van Meijgaarden, K. E., Franken, K. L. M. C., Wiele, B., Arend, S. M., Faber, W. R., et al. (2004). Immunological crossreactivity of the *Mycobacterium leprae* CFP-10 with its homologue in *Mycobacterium tuberculosis*. *Scand. J. Immunol.* 59, 66–70. doi: 10.1111/j.0300-9475.2004.01358.x
- Han, X. Y., Seo, Y. H., Sizer, K. C., Schoberle, T., May, G. S., Spencer, J. S., et al. (2008). A new *Mycobacterium* species causing diffuse lepromatous leprosy. *Am. J. Clin. Pathol.* 130, 856–864. doi: 10.1309/ajcp72fjzrrvmm
- Han, X. Y., and Silva, F. J. (2014). On the age of leprosy. *PLoS Negl. Trop. Dis.* 8:e2544. doi: 10.1371/journal.pntd.0002544
- Honap, T. P., Pfister, L. A., Housman, G., Mills, S., Tarara, R. P., Suzuki, K., et al. (2018). *Mycobacterium leprae* genomes from naturally infected nonhuman primates. *PLoS Negl. Trop. Dis.* 12:e0006190. doi: 10.1371/journal.pntd.0006190
- Koboldt, D. C., Zhang, Q., Larson, D. E., Shen, D., McLellan, M. D., Lin, L., et al. (2012). VarScan 2: somatic mutation and copy number alteration discovery in cancer by exome sequencing. *Genome Res.* 22, 568–576. doi: 10.1101/gr.129684.111
- Krause-Kyora, B., Nutsua, M., Boehme, L., Pierini, F., Pedersen, D. D., Kornell, S.-C., et al. (2018). Ancient DNA study reveals HLA susceptibility locus for leprosy in medieval Europeans. *Nat. Commun.* 9, 1569–1569. doi: 10.1038/s41467-018-03857-x
- Kumar, B., Uprety, S., and Dogra, S. (2017). “Clinical diagnosis of leprosy,” in *International Textbook of Leprosy*, eds D. M. Scollard and T. P. Gills. Available online at: www.internationaltextbookofleprosy.org (accessed September, 2019).
- Lavania, M., Katoch, K., Katoch, V. M., Gupta, A. K., Chauhan, D. S., Sharma, R., et al. (2008). Detection of viable *Mycobacterium leprae* in soil samples: insights into possible sources of transmission of leprosy. *Infect. Genet. Evol.* 8, 627–631. doi: 10.1016/j.meegid.2008.05.007
- Lavania, M., Katoch, K., Sachan, P., Dubey, A., Kapoor, S., Kashyap, M., et al. (2006). Detection of *Mycobacterium leprae* DNA from soil samples by PCR targeting RLEP sequences. *J. Commun. Dis.* 38, 269–273.
- Lima, L., Fontes, A. N. B., Li, W., Suffys, P. N., Vissa, V. D., Mota, R. M. S., et al. (2016). Intrapatient comparison of *Mycobacterium leprae* by VNTR analysis in nasal secretions and skin biopsy in a Brazilian leprosy endemic region. *Lepr. Rev.* 87, 486–500.
- Machado, D., Lecorche, E., Mougari, F., Cambau, E., and Viveiros, M. (2018). Insights on *Mycobacterium leprae* efflux pumps and their implications in drug resistance and virulence. *Front. Microbiol.* 9:3072. doi: 10.3389/fmicb.2018.03072
- Manta, F. S. N., Barbieri, R. R., Moreira, S. J. M., Santos, P. T. S., Nery, J. A. C., Duppre, N. C., et al. (2019). Quantitative PCR for leprosy diagnosis and monitoring in household contacts: a follow-up study, 2011–2018. *Sci. Rep.* 9:16675. doi: 10.1038/s41598-019-52640-5
- Martinez, A. N., Lahiri, R., Pittman, T. L., Scollard, D., Truman, R., Moraes, M. O., et al. (2009). Molecular determination of *Mycobacterium leprae* viability by use of real-time PCR. *J. Clin. Microbiol.* 47, 2124–2130. doi: 10.1128/jcm.00512-09
- Martinez, A. N., Ribeiro-Alves, M., Sarno, E. N., and Moraes, M. O. (2011). Evaluation of qPCR-based assays for leprosy diagnosis directly in clinical specimens. *PLoS Negl. Trop. Dis.* 5:e1354. doi: 10.1371/journal.pntd.001354
- Mendum, T. A., Schuenemann, V. J., Roffey, S., Taylor, G. M., Wu, H., Singh, P., et al. (2014). *Mycobacterium leprae* genomes from a British medieval leprosy hospital: towards understanding an ancient epidemic. *BMC Genomics* 15:270. doi: 10.1186/1471-2164-15-270
- Mieras, L. F., Taal, A. T., van Brakel, W. H., Cambau, E., Saunderson, P. R., Smith, W. C. S., et al. (2018). An enhanced regimen as post-exposure chemoprophylaxis for leprosy: PEP+. *BMC Infect. Dis.* 18:506. doi: 10.1186/s12879-018-3402-4
- Mira, M. T., Alcais, A., Nguyen, V. T., Moraes, M. O., Di Flumeri, C., Vu, H. T., et al. (2004). Susceptibility to leprosy is associated with PARK2 and PACRG. *Nature* 427, 636–640. doi: 10.1038/nature02326
- Moet, F. J., Meima, A., Oskam, L., and Richardus, J. H. (2004). Risk factors for the development of clinical leprosy among contacts, and their relevance for targeted interventions. *Lepr. Rev.* 75, 310–326.

- Monot, M., Honore, N., Garnier, T., Araoz, R., Coppee, J. Y., Lacroix, C., et al. (2005). On the origin of leprosy. *Science* 308, 1040–1042. doi: 10.1126/science/1109759
- Monot, M., Honore, N., Garnier, T., Zidane, N., Sherafi, D., Paniz-Mondolfi, A., et al. (2009). Comparative genomic and phylogeographic analysis of *Mycobacterium leprae*. *Nat. Genet.* 41, 1282–1289. doi: 10.1038/ng.477
- Penna, M. L., Penna, G. O., Iglesias, P. C., Natal, S., and Rodrigues, L. C. (2016). Anti-PGL-1 positivity as a risk marker for the development of leprosy among contacts of leprosy cases: systematic review and meta-analysis. *PLoS Negl. Trop. Dis.* 10:e0004703. doi: 10.1371/journal.pntd.0004703
- Richardus, R., Alam, K., Kundu, K., Chandra Roy, J., Zafar, T., Chowdhury, A. S., et al. (2019). Effectiveness of single-dose rifampicin after BCG vaccination to prevent leprosy in close contacts of patients with newly diagnosed leprosy: a cluster randomized controlled trial. *Int. J. Infect. Dis.* 88, 65–72. doi: 10.1016/j.ijid.2019.08.035
- Richardus, R. A., van der Zwet, K., van Hooij, A., Wilson, L., Oskam, L., Faber, R., et al. (2017). Longitudinal assessment of anti-PGL-I serology in contacts of leprosy patients in Bangladesh. *PLoS Negl. Trop. Dis.* 11:e0006083. doi: 10.1371/journal.pntd.0006083
- Ridley, D. S., and Jopling, W. H. (1966). Classification of leprosy according to immunity. A five-group system. *Int. J. Lepr. Other Mycobact. Dis.* 34, 255–273.
- Rimmer, A., Phan, H., Mathieson, I., Iqbal, Z., Twigg, S. R. F., Wilkie, A. O. M., et al. (2014). Integrating mapping-, assembly- and haplotype-based approaches for calling variants in clinical sequencing applications. *Nat. Genet.* 46, 912–918. doi: 10.1038/ng.3036
- Robinson, J. T., Thorvaldsdóttir, H., Winckler, W., Guttman, M., Lander, E. S., Getz, G., et al. (2011). Integrative genomics viewer. *Nat. Biotechnol.* 29, 24–26. doi: 10.1038/nbt.1754
- Romero-Montoya, M., Beltran-Alzate, J. C., and Cardona-Castro, N. (2017). Evaluation and monitoring of *Mycobacterium leprae* transmission in household contacts of patients with Hansen's disease in Colombia. *PLoS Negl. Trop. Dis.* 11:e0005325. doi: 10.1371/journal.pntd.0005325
- Sales-Marques, C., Cardoso, C. C., Alvarado-Arnez, L. E., Illaramendi, X., Sales, A. M., Hacker, M. A., et al. (2017). Genetic polymorphisms of the IL6 and NOD2 genes are risk factors for inflammatory reactions in leprosy. *PLoS Negl. Trop. Dis.* 11:e0005754. doi: 10.1371/journal.pntd.0005754
- Santos, D. F. D., Mendonca, M. R., Antunes, D. E., Sabino, E. F. P., Pereira, R. C., Goulart, L. R., et al. (2018). Molecular, immunological and neurophysiological evaluations for early diagnosis of neural impairment in seropositive leprosy household contacts. *PLoS Negl. Trop. Dis.* 12:e0006494. doi: 10.1371/journal.pntd.0006494
- Schilling, A.-K., Avanzi, C., Ulrich, R. G., Busso, P., Pisanu, B., Ferrari, N., et al. (2019a). British red squirrels remain the only known wild rodent host for leprosy bacilli. *Front. Vet. Sci.* 6:8. doi: 10.3389/fvets.2019.00008
- Schilling, A.-K., van Hooij, A., Corstjens, P., Lurz, P., DelPozo, J., Stevenson, K., et al. (2019b). Detection of humoral immunity to mycobacteria causing leprosy in Eurasian red squirrels (*Sciurus vulgaris*) using a quantitative rapid test. *Eur. J. Wildl. Res.* 65:49.
- Schuenemann, V. J., Avanzi, C., Krause-Kyora, B., Seitz, A., Herbig, A., Inskip, S., et al. (2018). Ancient genomes reveal a high diversity of *Mycobacterium leprae* in medieval Europe. *PLoS Pathog.* 14:e1006997. doi: 10.1371/journal.ppat.1006997
- Schuenemann, V. J., Singh, P., Mendum, T. A., Krause-Kyora, B., Jager, G., Bos, K. I., et al. (2013). Genome-wide comparison of medieval and modern *Mycobacterium leprae*. *Science* 341, 179–183. doi: 10.1126/science.1238286
- Sharma, R., Singh, P., Loughry, W. J., Lockhart, J. M., Inman, W. B., Duthie, M. S., et al. (2015). Zoonotic leprosy in the Southeastern United States. *Emerg. Infect. Dis.* 21, 2127–2134. doi: 10.3201/eid2112.150501
- Singh, P., and Cole, S. T. (2011). *Mycobacterium leprae*: genes, pseudogenes and genetic diversity. *Future Microbiol.* 6, 57–71. doi: 10.2217/fmb.10.153
- Spencer, J. S., and Brennan, P. J. (2011). The role of *Mycobacterium leprae* phenolic glycolipid I (PGL-I) in serodiagnosis and in the pathogenesis of leprosy. *Lepr. Rev.* 82, 344–357.
- Suzuki, K., Takigawa, W., Tanigawa, K., Nakamura, K., Ishido, Y., Kawashima, A., et al. (2010). Detection of *Mycobacterium leprae* DNA from archaeological skeletal remains in Japan using whole genome amplification and polymerase chain reaction. *PLoS One* 5:e12422. doi: 10.1371/journal.pone.0012422
- Tiό-Coma, M., Avanzi, C., Verhard, E. M., Pierneef, L., van Hooij, A., Benjak, A., et al. (2020). Detection of new *Mycobacterium leprae* subtype in Bangladesh by genomic characterization to explore transmission patterns. *medRxiv* [Preprint] doi: 10.1101/2020.03.05.20031450
- Tiό-Coma, M., Sprong, H., Kik, M., van Dissel, J. T., Han, X. Y., Pieters, T., et al. (2019a). Lack of evidence for the presence of leprosy bacilli in red squirrels from North-West Europe. *Transbound Emerg. Dis.* 67, 1032–1034. doi: 10.1111/tbed.13423
- Tiό-Coma, M., Wijnands, T., Pierneef, L., Schilling, A. K., Alam, K., Roy, J. C., et al. (2019b). Detection of *Mycobacterium leprae* DNA in soil: multiple needles in the haystack. *Sci. Rep.* 9:3165. doi: 10.1038/s41598-019-39746-6
- Truman, R. W., Andrews, P. K., Robbins, N. Y., Adams, L. B., Krahenbuhl, J. L., and Gillis, T. P. (2008). Enumeration of *Mycobacterium leprae* using real-time PCR. *PLoS Negl. Trop. Dis.* 2:e328. doi: 10.1371/journal.pntd.000328
- Truman, R. W., Singh, P., Sharma, R., Busso, P., Rougemont, J., Paniz-Mondolfi, A., et al. (2011). Probable zoonotic leprosy in the Southern United States. *N. Engl. J. Med.* 364, 1626–1633. doi: 10.1056/NEJMoa1010536
- Turankar, R. P., Lavania, M., Chaitanya, V. S., Sengupta, U., Darlong, J., Darlong, F., et al. (2014). Single nucleotide polymorphism-based molecular typing of *M. leprae* from multicase families of leprosy patients and their surroundings to understand the transmission of leprosy. *Clin. Microbiol. Infect.* 20, O142–O149. doi: 10.1111/1469-0691.12365
- Turankar, R. P., Lavania, M., Darlong, J., Siva Sai, K. S. R., Sengupta, U., and Jadhav, R. S. (2019). Survival of *Mycobacterium leprae* and association with Acanthamoeba from environmental samples in the inhabitant areas of active leprosy cases: a cross sectional study from endemic pockets of Purulia, West Bengal. *Infect. Genet. Evol.* 72, 199–204. doi: 10.1016/j.meegid.2019.01.014
- Turankar, R. P., Lavania, M., Singh, M., Sengupta, U., Siva Sai, K., and Jadhav, R. S. (2016). Presence of viable *Mycobacterium leprae* in environmental specimens around houses of leprosy patients. *Indian J. Med. Microbiol.* 34, 315–321. doi: 10.4103/0255-0857.188322
- Turankar, R. P., Lavania, M., Singh, M., Siva Sai, K. S., and Jadhav, R. S. (2012). Dynamics of *Mycobacterium leprae* transmission in environmental context: deciphering the role of environment as a potential reservoir. *Infect. Genet. Evol.* 12, 121–126. doi: 10.1016/j.meegid.2011.10.023
- Uaska Sartori, P. V., Penna, G. O., Bühner-Sékula, S., Pontes, M. A. A., Gonçalves, H. S., Cruz, R., et al. (2020). Human genetic susceptibility of leprosy recurrence. *Sci. Rep.* 10:1284. doi: 10.1038/s41598-020-58079-3
- Uplekar, S., Heym, B., Friocourt, V., Rougemont, J., and Cole, S. T. (2011). Comparative genomics of Esx genes from clinical isolates of *Mycobacterium tuberculosis* provides evidence for gene conversion and epitope variation. *Infect. Immun.* 79, 4042–4049. doi: 10.1128/IAI.05344-11
- van Beers, S. M., Izumi, S., Madjid, B., Maeda, Y., Day, R., and Klatser, P. R. (1994). An epidemiological study of leprosy infection by serology and polymerase chain reaction. *Int. J. Lepr. Other Mycobact. Dis.* 62, 1–9.
- Van Dissel, J. T., Pieters, T., Geluk, A., Maat, G., Menke, H. E., Tio-Coma, M., et al. (2019). Archival, paleopathological and aDNA-based techniques in leprosy research and the case of Father Petrus Donders at the Leprosarium 'Batavia', Suriname. *Int. J. Paleopathol.* 27, 1–8. doi: 10.1016/j.ijpp.2019.08.001
- van Hooij, A., Tjon Kon Fat, E. M., Batista da Silva, M., Carvalho Bouth, R., Cunha Messias, A. C., Gobbo, A. R., et al. (2018). Evaluation of Immunodiagnostic Tests for Leprosy in Brazil, China and Ethiopia. *Sci. Rep.* 8:17920. doi: 10.1038/s41598-018-36323-1
- van Hooij, A., Tjon Kon Fat, E. M., van den Eeden, S. J. F., Wilson, L., Batista da Silva, M., Salgado, C. G., et al. (2017). Field-friendly serological tests for determination of *M. leprae*-specific antibodies. *Sci. Rep.* 7:8868. doi: 10.1038/s41598-017-07803-7
- van Hooij, A., van den Eeden, S., Richardus, R., Tjon Kon Fat, E., Wilson, L., Franken, K., et al. (2019). Application of new host biomarker profiles in quantitative point-of-care tests facilitates leprosy diagnosis in the field. *EBioMedicine* 47, 301–308. doi: 10.1016/j.ebiom.2019.08.009

- Wang, D., Xu, L., Lv, L., Su, L. Y., Fan, Y., Zhang, D. F., et al. (2015). Association of the LRRK2 genetic polymorphisms with leprosy in Han Chinese from Southwest China. *Genes Immun.* 16, 112–119. doi: 10.1038/gene.2014.72
- World Health Organization (2017). *A Guide for Surveillance of Antimicrobial Resistance in Leprosy*. New Delhi: World Health Organization, Region Office for South-East Asia.
- World Health Organization (2019). Global leprosy update, 2018: moving towards a leprosy-free world. *Weekly Epidemiol. Rec.* 94, 389–412.
- Zhang, F. R., Huang, W., Chen, S. M., Sun, L. D., Liu, H., Li, Y., et al. (2009). Genomewide association study of leprosy. *N. Engl. J. Med.* 361, 2609–2618.

Conflict of Interest: The authors declare that the research was conducted in the absence of any commercial or financial relationships that could be construed as a potential conflict of interest.

Copyright © 2020 Tió-Coma, Avanzi, Verhard, Pierneef, van Hooij, Benjak, Roy, Khatun, Alam, Corstjens, Cole, Richardus and Geluk. This is an open-access article distributed under the terms of the Creative Commons Attribution License (CC BY). The use, distribution or reproduction in other forums is permitted, provided the original author(s) and the copyright owner(s) are credited and that the original publication in this journal is cited, in accordance with accepted academic practice. No use, distribution or reproduction is permitted which does not comply with these terms.