



Universiteit  
Leiden  
The Netherlands

**Quality of care evaluation in non-functioning pituitary adenoma with chiasm compression: visual outcomes and timing of intervention clinical recommendations based on a systematic literature review and cohort study (vol 23, pg 417, 2020)**

Pelsma, I.C.M.; Verstegen, M.J.T.; Vries, F. de; Notting, I.C.; Broekman, M.L.D.; Furth, W.R. van; ... ; Pereira, A.M.

**Citation**

Pelsma, I. C. M., Verstegen, M. J. T., Vries, F. de, Notting, I. C., Broekman, M. L. D., Furth, W. R. van, ... Pereira, A. M. (2020). Quality of care evaluation in non-functioning pituitary adenoma with chiasm compression: visual outcomes and timing of intervention clinical recommendations based on a systematic literature review and cohort study (vol 23, pg 417, 2020). *Pituitary*, 23(4), 430-431. doi:10.1007/s11102-020-01061-z

Version: Publisher's Version  
License: [Creative Commons CC BY 4.0 license](#)  
Downloaded from: <https://hdl.handle.net/1887/3181363>

**Note:** To cite this publication please use the final published version (if applicable).



# Correction to: Quality of care evaluation in non-functioning pituitary adenoma with chiasm compression: visual outcomes and timing of intervention clinical recommendations based on a systematic literature review and cohort study

Iris C. M. Pelsma<sup>1,4</sup> · Marco J. T. Verstegen<sup>2,4</sup> · Friso de Vries<sup>1,4</sup> · Irene C. Notting<sup>3,4</sup> ·  
Marika L. D. Broekman<sup>2,5</sup> · Wouter R. van Furth<sup>2,4</sup> · Nienke R. Biermasz<sup>1,4</sup> · Alberto M. Pereira<sup>1,4</sup>

Published online: 21 June 2020  
© The Author(s) 2020

**Correction to: Pituitary**  
<https://doi.org/10.1007/s11102-020-01044-0>

read ‘Refer as soon as possible’. Corrected version of Fig. 2 is given below.

The original version of the article unfortunately contained an error in Fig. 2. The term ‘Refer within 3 days’ should

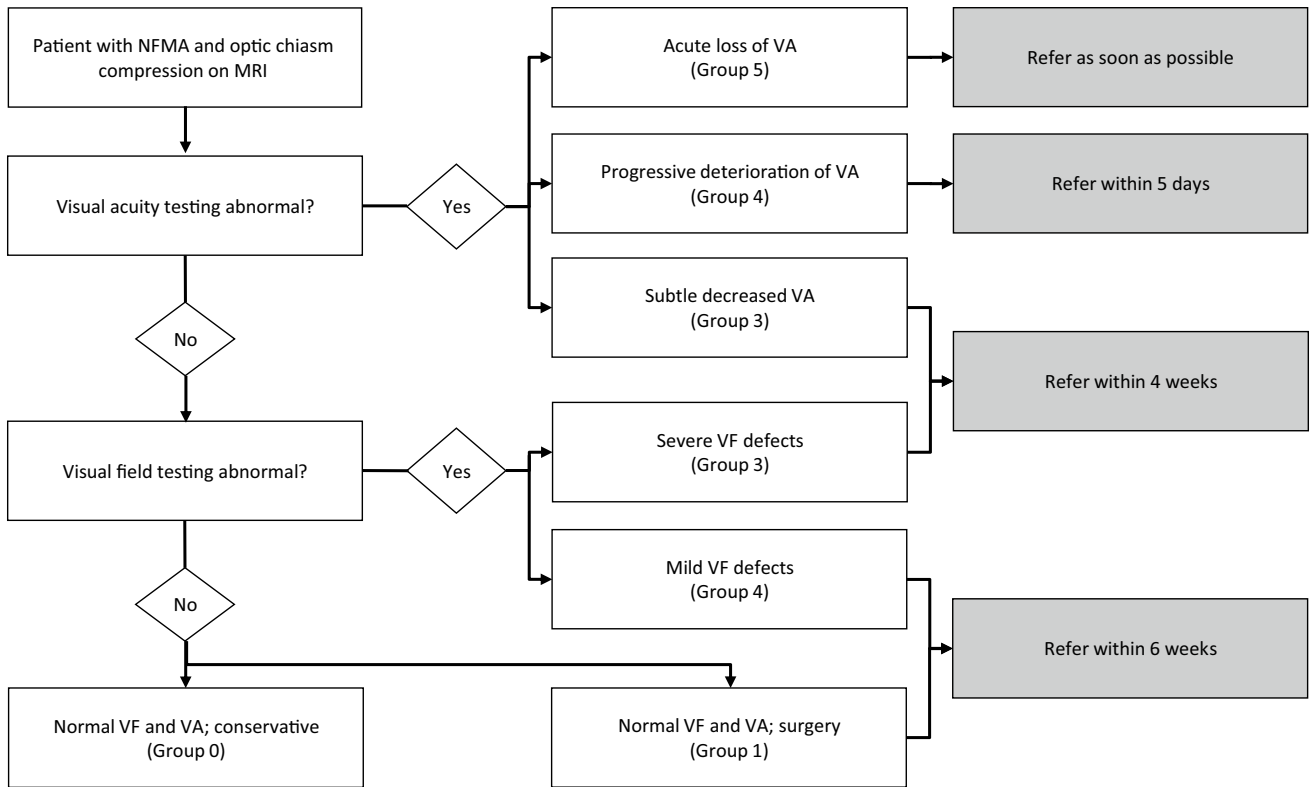
---

The original article can be found online at <https://doi.org/10.1007/s11102-020-01044-0>.

---

✉ Iris C. M. Pelsma  
I.C.M.Pelsma@lumc.nl

- <sup>1</sup> Division of Endocrinology, Department of Medicine, Leiden University Medical Center, Albinusdreef 2, 2333 ZA Leiden, The Netherlands
- <sup>2</sup> Department of Neurosurgery, Leiden University Medical Center, Leiden, The Netherlands
- <sup>3</sup> Department of Ophthalmology, Leiden University Medical Center, Leiden, The Netherlands
- <sup>4</sup> Center for Endocrine Tumors Leiden, Leiden University Medical Center, Leiden, The Netherlands
- <sup>5</sup> Department of Neurosurgery, Haaglanden Medical Center, Den Haag, The Netherlands



**Fig. 2** Flowchart of proposed referral delays depending on visual function and compression of optic chiasm. Proposed time(frames) for the referral of NFMA patients with visual acuity impairment or visual

field defects from a non-expertise to an expertise center. VA visual acuity, VF visual field

**Publisher’s Note** Springer Nature remains neutral with regard to jurisdictional claims in published maps and institutional affiliations.