



Universiteit
Leiden
The Netherlands

Common genetic variants contribute to risk of transposition of the great arteries

Skoric-Milosavljevic, D.; Tadros, R.; Bosada, F.M.; Tessadori, F.; Weerd, J.H. van; Woudstra, O.I.; ... ; Bezzina, C.R.

Citation

Skoric-Milosavljevic, D., Tadros, R., Bosada, F. M., Tessadori, F., Weerd, J. H. van, Woudstra, O. I., ... Bezzina, C. R. (2022). Common genetic variants contribute to risk of transposition of the great arteries. *Circulation Research*, 130(2), 166-180. doi:10.1161/CIRCRESAHA.120.317107

Version: Publisher's Version

License: [Creative Commons CC BY-NC-ND 4.0 license](https://creativecommons.org/licenses/by-nc-nd/4.0/)

Downloaded from: <https://hdl.handle.net/1887/3276861>

Note: To cite this publication please use the final published version (if applicable).



Common Genetic Variants Contribute to Risk of Transposition of the Great Arteries

Doris Škorić-Milosavljević¹*, Rafik Tadros²*, Fernanda M. Bosada³*, Federico Tessadori⁴*, Jan Hendrik van Weerd⁵, Odilia I. Woudstra⁶, Fleur V.Y. Tjong⁷, Najim Lahrouchi⁸, Fanny Bajolle⁹, Heather J. Cordell¹⁰, A.J. Agopian¹¹, Gillian M. Blue¹², Daniela Q.C.M. Barge-Schaapveld¹³, Marc Gewillig¹⁴, Christoph Preuss¹⁵, Elisabeth M. Lodder¹⁶, Phil Barnett¹⁷, Aho Ilgun, Leander Beekman, Karel van Duijvenboden, Regina Bokenkamp, Martina Müller-Nurasyid¹⁸, KORA-Study Group,† Hubert W. Vliegen¹⁹, Thelma C. Konings, Joost P. van Melle, Arie P.J. van Dijk, Roland R.J. van Kimmenade, Jolien W. Roos-Hesselink²⁰, Gertjan T. Sieswerda²¹, Folkert Meijboom, Hashim Abdul-Khaliq²², Felix Berger²³, Sven Dittrich²⁴, Marc-Phillip Hitz, Julia Moosmann²⁵, Frank-Thomas Riede, Stephan Schubert²⁶, Pilar Galan, Mark Lathrop²⁷, Hans M. Munter, Ammar Al-Chalabi²⁸, Christopher E. Shaw²⁹, Pamela J. Shaw³⁰, Karen E. Morrison³¹, Jan H. Veldink³², Leonard H. van den Berg, Sylvia Evans³³, Marcelo A. Nobrega³⁴, Ivy Aneas, Milena Radivojkov-Blagojević³⁵, Thomas Meitinger³⁶, Erwin Oechslin³⁷, Tapas Mondal, Lynn Bergin³⁸, John F. Smythe, Luis Altamirano-Diaz³⁹, Jane Loughheed⁴⁰, Berto J. Bouma⁴¹, Marie-A. Chaix⁴², Jennie Kline, Anne S. Bassett⁴³, Gregor Andelfinger⁴⁴, Roel L.F. van der Palen⁴⁵, Patrice Bouvagnet⁴⁶, Sally-Ann B. Clur⁴⁷, Jeroen Breckpot⁴⁸, Wilhelmina S. Kerstjens-Frederikse⁴⁹, David S. Winlaw⁵⁰, Ulrike M.M. Bauer⁵¹, Seema Mital⁵², Elizabeth Goldmuntz⁵³, Bernard Keavney⁵⁴, Damien Bonnet⁵⁵, Barbara J. Mulder, Michael W.T. Tanck⁵⁶, Jeroen Bakkers⁵⁷, Vincent M. Christoffels⁵⁸, Cornelis J. Boogerd⁵⁹, Alex V. Postma⁶⁰*, Connie R. Bezzina⁶¹*

RATIONALE: Dextro-transposition of the great arteries (D-TGA) is a severe congenital heart defect which affects approximately 1 in 4,000 live births. While there are several reports of D-TGA patients with rare variants in individual genes, the majority of D-TGA cases remain genetically elusive. Familial recurrence patterns and the observation that most cases with D-TGA are sporadic suggest a polygenic inheritance for the disorder, yet this remains unexplored.

OBJECTIVE: We sought to study the role of common single nucleotide polymorphisms (SNPs) in risk for D-TGA.

METHODS AND RESULTS: We conducted a genome-wide association study in an international set of 1,237 patients with D-TGA and identified a genome-wide significant susceptibility locus on chromosome 3p14.3, which was subsequently replicated in an independent case-control set (rs56219800, meta-analysis $P=8.6 \times 10^{-10}$, OR=0.69 per C allele). SNP-based heritability analysis showed that 25% of variance in susceptibility to D-TGA may be explained by common variants. A genome-wide polygenic risk score derived from the discovery set was significantly associated to D-TGA in the replication set ($P=4 \times 10^{-5}$). The genome-wide significant locus (3p14.3) co-localizes with a putative regulatory element that interacts with the promoter of *WNT5A*, which encodes the Wnt Family Member 5A protein known for its role in cardiac development in mice. We show that this element drives reporter gene activity in the developing heart of mice and zebrafish and is bound by the developmental transcription factor TBX20. We further demonstrate that TBX20 attenuates *Wnt5a* expression levels in the developing mouse heart.

CONCLUSIONS: This work provides support for a polygenic architecture in D-TGA and identifies a susceptibility locus on chromosome 3p14.3 near *WNT5A*. Genomic and functional data support a causal role of *WNT5A* at the locus.

GRAPHIC ABSTRACT: A graphic abstract is available for this article.

Key Words: congenital heart disease ■ genome-wide association study ■ single nucleotide polymorphism ■ transposition of great vessels ■ Wnt-5a protein

Correspondence to: Connie R. Bezzina, PhD, Amsterdam UMC, location AMC, Meibergdreef 9, 1105 AZ Amsterdam, The Netherlands. Email c.r.bezzina@amsterdamumc.nl
*D.S.-M., R.T., F.M.B., F.T., A.V.P., and C.R.B. contributed equally.

†A list of all study participants of KORA-Study Group is given in the Acknowledgment.

Supplemental Material is available at <https://www.ahajournals.org/doi/suppl/10.1161/CIRCRESAHA.120.317107>.

For Sources of Funding and Disclosures, see page 177.

© 2021 The Authors. *Circulation Research* is published on behalf of the American Heart Association, Inc., by Wolters Kluwer Health, Inc. This is an open access article under the terms of the [Creative Commons Attribution Non-Commercial-NoDerivs](https://creativecommons.org/licenses/by-nc-nd/4.0/) License, which permits use, distribution, and reproduction in any medium, provided that the original work is properly cited, the use is noncommercial, and no modifications or adaptations are made.

Circulation Research is available at www.ahajournals.org/journal/res

Novelty and Significance

What Is Known?

- The pathophysiology and the underlying genetic causes of dextro-transposition of the great arteries (D-TGA) remain poorly understood.
- Familial recurrence patterns and the observation that most cases with D-TGA are sporadic suggest a polygenic inheritance.
- Previous common variant genome-wide association studies have identified susceptibility variants in patients with other congenital heart defects.

What New Information Does This Article Contribute?

- Common genetic variants play an important role in susceptibility to D-TGA, in line with a polygenic architecture.
- A genome-wide significant susceptibility locus at 3p14.3 overlaps a predicted cardiac regulatory element that drives expression in the outflow tract of the embryonic heart.
- Functional studies identify *WNT5A* as the likely causal gene at the locus.

D-TGA is a rare and life-threatening congenital heart defect. While the clinical management and survival of patients with D-TGA have improved substantially over the last few decades, the pathophysiology and the underlying genetic causes of this disorder remain poorly understood. Familial recurrence patterns of D-TGA suggest a polygenic inheritance. We here conducted the first genome-wide association study in a large set of cases with D-TGA. We demonstrated a significant contribution of common genetic variants in disease susceptibility to D-TGA and identified a genome-wide significant association signal at 3p14.3. Functional studies identified *WNT5A* as the likely causal gene at the 3p14.3 locus. This study sheds light on the genetic architecture of D-TGA, with implications for genetic counseling of affected families. Furthermore, it provides insights into the pathophysiology of the disorder.

Nonstandard Abbreviations and Acronyms

CHD	congenital heart disease
D-TGA	dextro-transposition of the great arteries
eQTL	expression quantitative trait locus
GWAS	genome-wide association studies
OFT	outflow tract
PRS	polygenic risk score
QC	quality control
SNP	single nucleotide polymorphism
TAD	topologically associating domain
VSD	ventricular septal defect

Complete transposition of the great arteries (TGA), also referred to as dextro-TGA (D-TGA), is a developmental cardiac outflow tract (OFT) defect.¹ With an incidence of 20 to 30 per 100 000 live births, it is among the most common forms of severe, cyanotic congenital heart disease (CHD).^{1,2} The anatomy of D-TGA is characterized by ventriculoarterial discordance, and about one-third of cases present additional lesions such as ventricular septal defect (VSD) and pulmonary outflow tract obstruction.³ If untreated, D-TGA leads to severe hypoxemia and neonatal mortality. Notably, advances in surgical treatments have improved patient

survival and have led to a substantial increase in adults with surgically corrected D-TGA, albeit with significant long-term morbidity in some patients.⁴ Given that most D-TGA patients now reach reproductive age, there is a growing need for a better understanding of the genetic architecture of D-TGA to allow for effective reproductive counseling.

While there are several reports of D-TGA patients with rare variants in individual genes,^{5–10} the majority of D-TGA cases remain genetically elusive. Familial recurrence patterns and the observation that most cases with D-TGA are sporadic suggest a polygenic inheritance,^{11–16} with genetic variants of different frequency and effect size contributing to risk. In recent years, genome-wide association studies (GWAS) have uncovered common genetic variants contributing to susceptibility for specific CHD lesions (eg, atrial septal defect,¹⁷ tetralogy of Fallot,¹⁸ and left-sided lesions^{19,20}). Although some of these studies included patients with diverse CHD lesions, including D-TGA,^{17,21–23} thus far no GWAS has been realized selectively in patients with D-TGA. We here conducted a case-control GWAS on 1237 cases with D-TGA recruited in Europe, North America, and Australia. We identified a susceptibility locus at 3p14.3 at genome-wide statistical significance and demonstrated that 25% of variance in D-TGA susceptibility was attributable to common genetic variation, supporting an important role for such variants

In This Issue, see p 163 | Meet the First Author, see p 164 | Editorial, see p 181

in susceptibility to D-TGA. Functional analysis of the 3p14.3 susceptibility locus provided compelling evidence for a causal role of *WNT5A*, encoding the Wnt Family Member 5A protein, known for its critical role in cardiac development.²⁴

METHODS

Data Availability

A detailed, expanded Methods description can be found in the [Supplemental Material](#). For details on all essential research materials used in this study, please see the Major Resources Table in the [Supplemental Material](#). The data that support the findings of this study are available from the corresponding author upon reasonable request.

Study Samples

We included unrelated individuals with D-TGA as the main cardiac lesion. For prespecified subgroup analyses, we subcategorized the cases into D-TGA in the absence of a VSD and pulmonary stenosis, referred to as “simple D-TGA,” and D-TGA with associated VSD and/or pulmonary stenosis, referred to as “complex D-TGA.” Cases for the genome-wide association analysis in the discovery set were included from centers in the Netherlands, France, the United Kingdom, Canada, Germany, Australia, and Belgium. For the purpose of replication, we included independent cases from the Netherlands and the United States. Previously genotyped controls were included from various studies on the basis of country of origin and genotyping platform to match the cases. An overview of genotyping arrays used in the discovery and replication sets are provided in [Table S1](#). All cases and controls gave written informed consent. The study was approved by the relevant institutional ethical review boards.

Association Analysis

After quality control (QC) and genotype imputation, the association of alternate allele dosage with D-TGA in the discovery set was tested using logistic regression assuming an additive genetic model, adjusting for sex and the first 5 principal components (PCs) using PLINK 1.9.²⁵ Single nucleotide polymorphisms (SNPs) associated with a $P < 5 \times 10^{-8}$ were considered genome-wide significant in the discovery cohort and were taken forward for replication, with the threshold for statistical significance set to $P < 0.05/\text{number of tests}$. An exploratory genome-wide meta-analysis was performed, where SNPs with $P < 5 \times 10^{-8}$ were considered genome-wide significant and those with a $P < 10^{-5}$ were considered suggestive.

Estimation of SNP Heritability and Polygenic Score

Single nucleotide polymorphism (SNP)-based heritability of D-TGA was estimated in the discovery set after additional stringent post-imputation QC as suggested²⁶ and using Phenotype-Correlation-Genotype-Correlation regression,²⁷ assuming a prevalence of 0.03%.² Furthermore, we derived a genome-wide polygenic risk score (PRS) in the discovery set

using LDpred²⁸ and assessed the association of this PRS with D-TGA in the replication set using logistic regression, correcting for sex.

LacZ Enhancer Screen in Mice

A predicted regulatory element (RE1) overlapping the genome-wide association signal (in mice: chr14:29,229,674–29,231,629; mm9) was cloned into Hsp68-*LacZ*,²⁹ and mouse in vivo transgenic reporter assays were performed by pronuclear injection as reported previously.³⁰ Embryos were harvested at E10.5 and subjected to X-gal staining as reported previously.³⁰ Embryos were genotyped using *LacZ* primers (forward, 5′-CAGCCTGAATGGCGAATGGCGCTT; reverse, 5′-CCCGTTGCACCACAGATGAAACGC). All embryos with X-gal staining were included for subsequent analysis, sex was not determined in the embryos. Only patterns that were observed in at least 3 different embryos resulting from independent transgenic integration events of the same construct were considered reproducible.^{29,31}

Enhancer Screen in Zebrafish

An amplified fragment of human RE1 was cloned into a custom DNA vector containing an E1b-mCherry-sv40pA reporter cassette and an attB recombination site for phiC31-mediated targeted transgenesis. The constructs were then microinjected in presence of phiC31 mRNA in 1-cell zebrafish embryos carrying a single genomic *attP* landing site. RE1-driven mCherry expression was assessed in 2dpf zebrafish embryos. The minimal number of injected analyzed embryos was 20, based on previous work in our laboratory.^{32,33}

Deletion of the GWAS Locus in Mice

Mice lacking the region including RE1 were generated using CRISPR/Cas9 genome editing. Whole-mount nonradioactive in situ hybridization analysis was performed to assess differences in expression of *Wnt5a* between wild-type and knock-out mice. Transcript levels of candidate target genes were determined by quantitative polymerase chain reaction. Sample size was not predetermined statistically and is based on previous work with a minimum of 5 animals per condition for each experiment.^{34,35}

TBX20 Chromatin Immunoprecipitation Sequencing

TBX20 chromatin immunoprecipitation sequencing data from E11.5 mouse hearts was generated previously.³⁰ These data are accessible from the ArrayExpress database (<http://www.ebi.ac.uk/arrayexpress>, accession number E-MTAB-3967³⁰). Histone modification data was generated previously by the ENCODE consortium.³⁶

Cardiac Tbx20 Conditional Knock-Out Mice

RNA sequencing after fluorescence-activated cell sorting, on cardiomyocytes from conditional cardiac *Tbx20* knock-out mice (*Tnnt2-rtTA; TetO-Cre; Tbx20^{loxP/loxP}*) and control cardiomyocytes was generated previously.³⁷ These data are accessible from the ArrayExpress database (<http://www.ebi.ac.uk/arrayexpress>, accession number E-MTAB-5596). Analysis was performed

utilizing the limma software package (3.26.8).³⁸ Raw read counts were first quantile normalized and transformed to the log-scale using the voom function.³⁹ Next, differential expression analysis was performed, and *P* were multiplicity corrected using Benjamini-Hochberg correction.

Transient Transfection and Luciferase Assay In Vitro

To generate reporter constructs for the 3 common haplotypes, the region including the putative regulatory element (RE1) was amplified from genomic DNA of homozygous carriers and cloned into the pGL4-SCP1-luc vector. HL-1 cells⁴⁰ were transfected with the reporter plasmid DNA, and luciferase activity measurements were performed. Statistics were performed using a Kruskal-Wallis nonparametric test.

RESULTS

Description of Study Population

A total of 1555 samples from patients with D-TGA were included, originating from 8 countries (Table S1): (1) a discovery set that consisted of 1307 patients with D-TGA that were recruited at multiple centers in the Netherlands (until June 2018), Germany, France, Belgium, the United Kingdom, Canada, and Australia; and (2) a replication set that consisted of 248 patients with D-TGA recruited in the Netherlands (after June 2018) and the United States. Approximately two-thirds (*n*=1056) had D-TGA in the absence of a VSD and pulmonary stenosis, referred to as “simple D-TGA”, and the remainder (*n*=499) had an associated VSD and/or pulmonary stenosis, referred to as “complex D-TGA.” Controls were obtained from previously genotyped datasets that best matched the cases in terms of ancestry and genotyping platform (total *n*=13 023). Although no systematic cardiac evaluation was performed in this control population, it is expected that a negligible portion of controls have D-TGA given its low prevalence and severe presentation.

Genome-Wide Association Analysis

Genotypic data of the discovery set was either generated in this study or was obtained previously¹⁷ (see Supplemental Methods and Table S1). QC exclusions were applied at both the SNP and at the sample levels. We restricted our analyses to cases and controls of European descent (as this comprised the majority of cases) and assigned each case to 3 ancestry-matched controls (see Supplemental Methods). Details on QC and principal component analyses are presented in Tables S2 and S3, and Figures S1 through S3. After QC and imputation using the Haplotype Reference Consortium panel,⁴¹ a total of 5 013 439 high-quality common SNPs (minor allele frequency $\geq 5\%$) in 1094 cases and 3282 controls remained for analysis in the discovery set. The GWAS quantile-quantile plot is shown in Figure S4 and

summary results after genomic correction ($\lambda=1.03$) in the discovery set are shown as a Manhattan plot in Figure 1A. A locus on chromosome 3p14.3 reached genome-wide statistical significance in the logistic regression (lead SNP rs56219800; $P=1.3\times 10^{-8}$; imputation quality score $R^2=0.97$; Figure 1C). The alternate allele C conferred an odds ratio (OR) of 0.69 (95% CI, 0.61–0.79; minor allele frequency 0.19 in cases and 0.25 in controls).

The association of rs56219800 with D-TGA was replicated in an independent replication set that consisted of 143 cases and 429 controls after QC ($P=0.02$; OR=0.66 [95% CI, 0.46–0.93]). In a meta-analysis, combining the discovery and replication case-control sets, rs56219800 remained the only signal reaching genome-wide statistical significance ($P=8.6\times 10^{-10}$; OR=0.69 [95% CI, 0.61–0.77]; Figure 1B). Conditional analysis, correcting for the lead SNP, did not reveal any additional independent significant ($P<1\times 10^{-5}$) signal at the 3p14.3 locus. Genome-wide case-control meta-analysis separately in simple D-TGA (*N*=841; Figure S5A) and complex D-TGA (*N*=396; Figure S5B) showed similar association effect sizes of rs56219800 (OR=0.69 [95% CI, 0.60–0.80], $P=8.8\times 10^{-7}$ in simple D-TGA; and OR=0.68 [95% CI, 0.55–0.83], $P=1.6\times 10^{-4}$ in complex D-TGA) and did not detect any associations at genome-wide statistical significance.

A total of 21 loci displayed a suggestive association ($P<1\times 10^{-5}$) with D-TGA in the meta-analysis (Table S4). Notably, none of the 7 SNPs previously associated with other CHD lesions^{17–20,22} were associated with D-TGA (Table S5).

SNP Heritability Estimates and Polygenic Risk Score

To assess the overall contribution of common variants to the risk of D-TGA, we estimated the SNP heritability of D-TGA in our case-control discovery set. We used Phenotype-Correlation-Genotype-Correlation regression, designed to account for the bimodal liability distribution in an ascertained cohort.²⁷ Assuming a prevalence of 0.03% for D-TGA,² we estimated SNP heritability on a liability scale of 0.25 ([95% CI, 0.16–0.35], $P=1.12\times 10^{-14}$). Similar results were obtained when varying the prevalence from 0.01% to 0.06%, as well as when restricting the analysis to the Dutch subset genotyped on the same platform (*n*=455 cases and 1348 controls) (Figure S6).

To further explore the polygenicity of D-TGA, we derived a genome-wide PRS using the summary statistics of the case-control discovery set using the Gibbs sampler implemented in LDpred²⁸ and confirmed its association in the replication set of 141 cases and 418 controls ($P=4\times 10^{-5}$, *C*-statistic=0.63, $R^2=0.06$; for $\rho=0.0003$). Adding the first 20 genotypic PCs to the model still

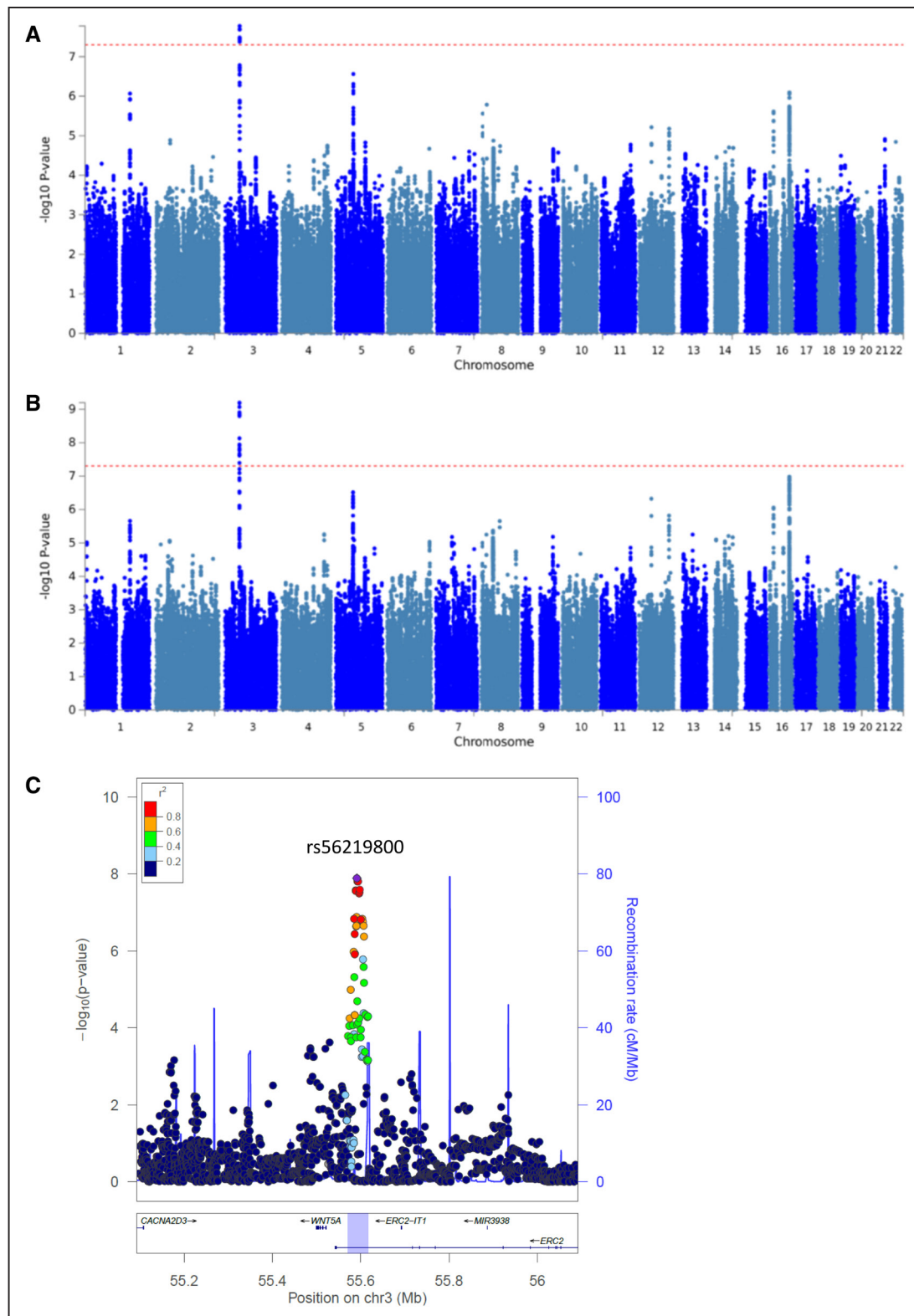


Figure 1. Manhattan plots of the genome-wide association results.

P of all tested single nucleotide polymorphisms (SNPs) on a $-\log_{10}$ scale from the logistic regression analysis in the discovery set including 1094 cases and 3282 controls (**A**) and the meta-analysis of the discovery and replication set including 1237 cases and 3711 controls (**B**). Dashed lines represent genome-wide significance P thresholds of 5×10^{-8} . **C**, Regional association plot of the 3p14.3 locus and surrounding genes (± 500 kb). The y -axis represent the $-\log_{10}(P)$ values from the meta-analysis. Round points represent SNPs in this region, colored by degree of linkage disequilibrium with rs56219800, the top associated SNP (purple point). The blue highlighted region represents the size of the locus, as defined by all SNPs with an $r^2 \geq 0.5$ with the lead SNP and that showed an association P of $< 10^{-3}$.

resulted in a significant association of PRS with D-TGA ($P=1.25\times 10^{-5}$). The association was consistent across different levels of ρ (tuning parameter of the Gibbs sampler) and when using P thresholding and R^2 pruning for PRS derivation (Table S6). Exclusion of chromosome 3 (including our genome-wide locus) from the PRS still resulted in a significant association with D-TGA in the replication set ($P=5\times 10^{-5}$, C -statistic=0.62, $R^2=0.06$; for $\rho=0.0003$), indicating that the genome-wide common variant polygenicity signal was not restricted to the 3p14.3 locus.

Annotation of Associating Loci

We assigned candidate genes to a locus if they were located in the same topologically associating domain (TAD) and/or when their expression levels were correlated with genetic variants within the association signal (cis-expression quantitative trait locus, expression quantitative trait locus [eQTL]) (see Supplemental Methods). The genome-wide locus at 3p14.3 is located within the last intron of *ERC2* and lies ≈ 70 kb from the transcription start site of *WNT5A* (Figure 1C). These 2 genes are the only ones located within the same TAD as the association signal (Figure 2). In the human genotype tissue expression dataset (GTEx V8), multiple SNPs, including the lead SNP, were eQTLs for *WNT5A* in esophageal mucosa, with the D-TGA risk allele being associated with higher expression of *WNT5A* ($P=2\times 10^{-5}$ for rs56219800). There was no significant cis-eQTL for the other gene in the TAD (ie, *ERC2*) or any other neighboring protein-coding gene. We used EMERGE, an in silico tool incorporating over 50 human cardiac epigenetic datasets to identify sequences within the associating locus with gene regulatory potential in the heart.⁴² This demonstrated that the 3p14.3 association signal colocalized with an EMERGE-predicted regulatory element (located at chr3:55,605,229–55,607,027; GRCh37), hereafter referred to as RE1 (Figure 2). Virtual chromosome conformation capture-on-chip data (4C), as derived from Hi-C data,⁴³ obtained in H9 human embryonic stem cells during cardiomyocyte differentiation (see Supplemental Methods for more detail) showed chromatin interaction between the RE1 region and the promoter of *WNT5A* (Figure S7). *WNT5A* encodes Wnt family Member 5A, a transcription factor involved in organ development. *Wnt5a* null mice demonstrate perinatal lethality with multi-organ abnormalities⁴⁴ and exhibit outflow tract defects, including D-TGA.⁴⁵ Collectively, these data point to *WNT5A* as the causal gene at this locus and suggest that it might be regulated by RE1.

In the additional 21 loci that passed the suggestive significance threshold ($P<10^{-5}$), a total of 93 genes were localized within the same TAD as the association signal and/or displayed a cis-eQTL effect with the association signal (Supplemental Methods and Table S7). At

each locus at least one gene was implicated in either abnormal heart morphology in mouse and/or humans (Table S8) and/or was present in a list of CHD (candidate) genes^{46–48} (Table S7). Thirteen of the 21 suggestive association signals colocalized with an EMERGE signal and could therefore contain regulatory elements regulating the expression of genes involved in the pathogenesis of D-TGA (Table S4).

Functional Characterization of the 3p14.3 Locus

To determine if the human EMERGE-predicted regulatory element at the 3p14.3 locus (ie, RE1) could drive gene expression during cardiac development in mice, we surveyed histone modification marks in the developing mouse heart, and found that RE1 displays hallmarks of a bona fide regulatory element, including H3K27ac associations (Figure 3A). In line with this, similar to the observation made in human above, the corresponding chromosomal region in the mouse showed a strong EMERGE signal indicative of a cardiac regulatory element (Figure S8A). This region is homologous to human RE1, indicative of functional conservation of this element. To test the functionality of the mouse RE1, we performed enhancer reporter assays in vivo and observed that RE1 drives robust cardiac expression in all transgenic mouse embryos ($n=5$, Figure 3B). Notably, expression was observed at E10.5 in outflow tract myocardium (5/5 lacZ positive embryos) and ventricles (5/5), regions that normally express *Wnt5a* at this stage.⁴⁹ The ability of RE1 to drive gene expression in the heart (among others) was confirmed in zebrafish using the human RE1 fragment (Figure 3C).

We next assessed whether homozygous deletion in mouse of the region homologous to the associating locus at 3p14.3, including RE1, would result in a cardiac phenotype. Two independent lines of RE1^{-/-} mice were born at a normal Mendelian ratio and showed no CHD, nor an effect on *Wnt5a* expression (Figure S8). To test whether RE1 might affect other, nearby genes, transcription levels of the other 3 genes in the same or adjacent TAD (ie, *Lrtm1*, *Cacna2d3* and *Erc2*) were also assessed at the same embryonic stage, and all were found to be almost undetectable in the heart (Figure S8B). We hypothesize that the lack of phenotypic differences in these RE1^{-/-} mice may be due to enhancer redundancy, as observed for multiple other developmental (cardiac) genes.^{50,51}

A closer look at the mouse locus using existing epigenetic and chromatin immunoprecipitation sequencing datasets^{30,42} obtained in mouse demonstrated that RE1 is bound by TBX20 in vivo in mouse hearts of E11.5 (Figure 3D), a time point at which outflow tract septation and alignment occurs. To gain more insight into a possible role of TBX20 in the regulation of *Wnt5a*, we compared *Wnt5a* expression in cardiomyocytes obtained from conditional, cardiac-specific, *Tbx20*

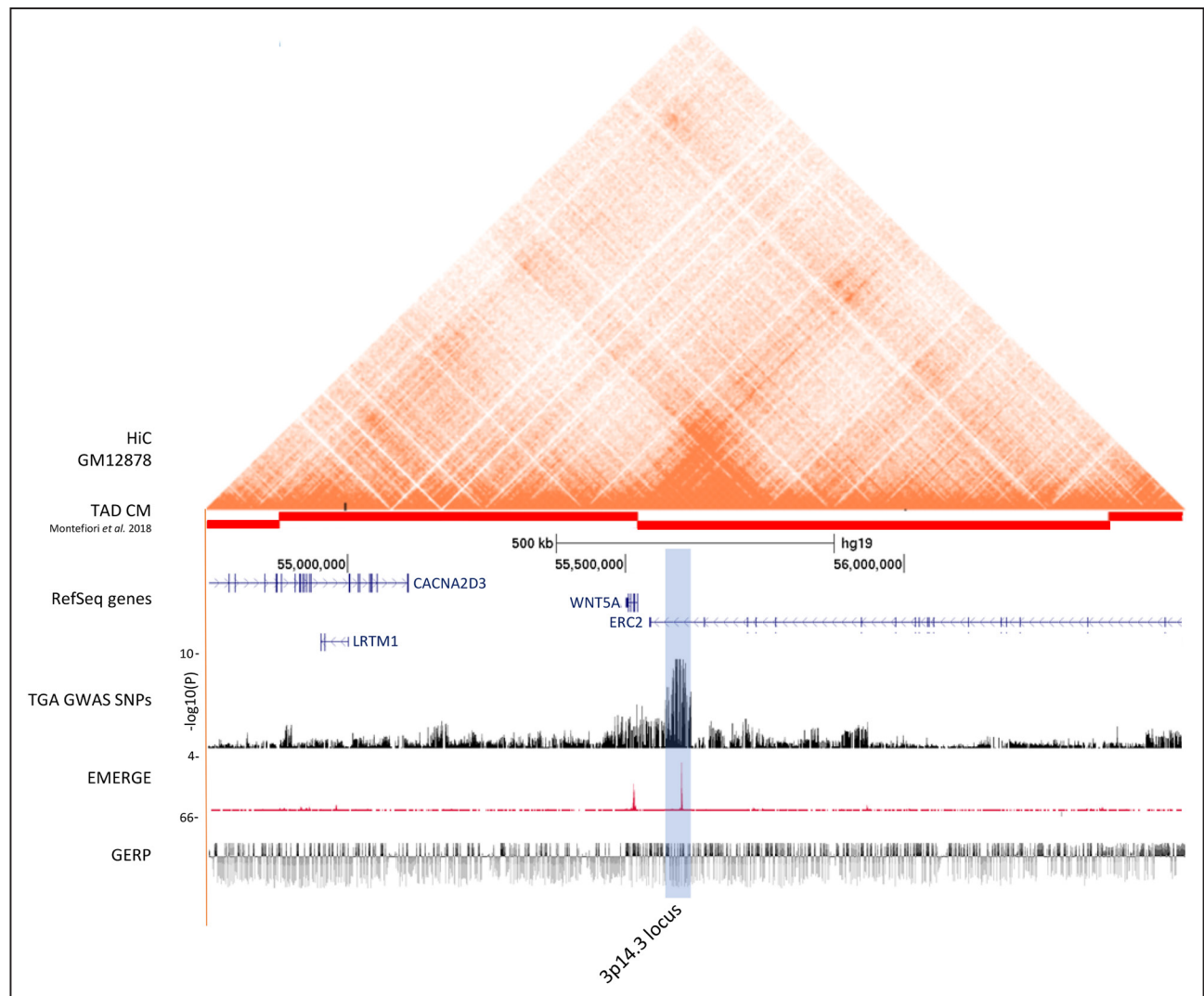


Figure 2. Functional annotation of the 3p14.3 locus.

From top to bottom: Hi-C data from the human lymphoblastoid line GM12878⁷⁹; TADs derived from iPSC-CMs⁸⁰; RefSeq genes; results from the TGA genome-wide association studies meta-analysis on a $-\log_{10}(P)$ scale; human EMERGE track⁴²; Genomic Evolutionary Rate Profiling (GERP) conservation track.⁸¹ The blue highlighted region represents the genome-wide associated 3p14.3 locus near *WNT5A*.

knock-out mice, and wildtype littermates ($n=4$ in both groups).³⁷ Notably, the expression of *Wnt5a* was significantly increased in the absence of *Tbx20* ($P=0.04$, Figure 3E). Moreover, other genes in the vicinity of RE1 were either not expressed above threshold levels, or their expression was not changed between *Tbx20* mutant and control cardiomyocytes (Figure 3E). In summary, we show that (1) RE1, which overlaps the GWAS association signal at 3p14.3, robustly drives expression in the developing cardiac outflow tract in vivo, in a pattern that recapitulates *Wnt5a* expression, (2) RE1, which interacts with the promoter of *WNT5A*, is bound by *Tbx20*, and (3) *Tbx20* attenuates *Wnt5a* expression levels in the developing mouse heart. Together with the fact *Wnt5a* transgenic mouse models^{45,49,52} and *Tbx20* null mice⁵³ exhibit outflow tract abnormalities, this indicates a potential causal role of *WNT5A* at the GWAS locus.

The above observations pointed to RE1 as a possible location for the causal variant of the 3p14.3 GWAS association signal. We cloned the 3 major haplotypes overlapping RE1 (between them accounting for almost 75% of alleles at this locus in the European sub-population of the 1000 Genomes Project; see [Supplemental Methods](#)), harboring 7 different SNPs with varying r^2 with the lead SNP (Figure 4A and [Figure S9](#)) and tested their regulatory activity. In comparison to the empty vector, all 3 human haplotypes drove robust luciferase reporter gene activity in HL-1 cells, a mouse atrial cardiomyocyte tumor lineage cell line. One of them, haplotype 3, demonstrated a significantly increased luciferase reporter activity of 2.2-fold ($P=2.6 \times 10^{-5}$) and 2.4-fold ($P=2.6 \times 10^{-6}$) compared with haplotype 1 and haplotype 2 respectively (Figure 4B). While haplotypes 2 and 3 differed at multiple sites, haplotypes 1 and 3 only differed at one SNP, that is, rs79492708. Interestingly, this SNP was predicted to

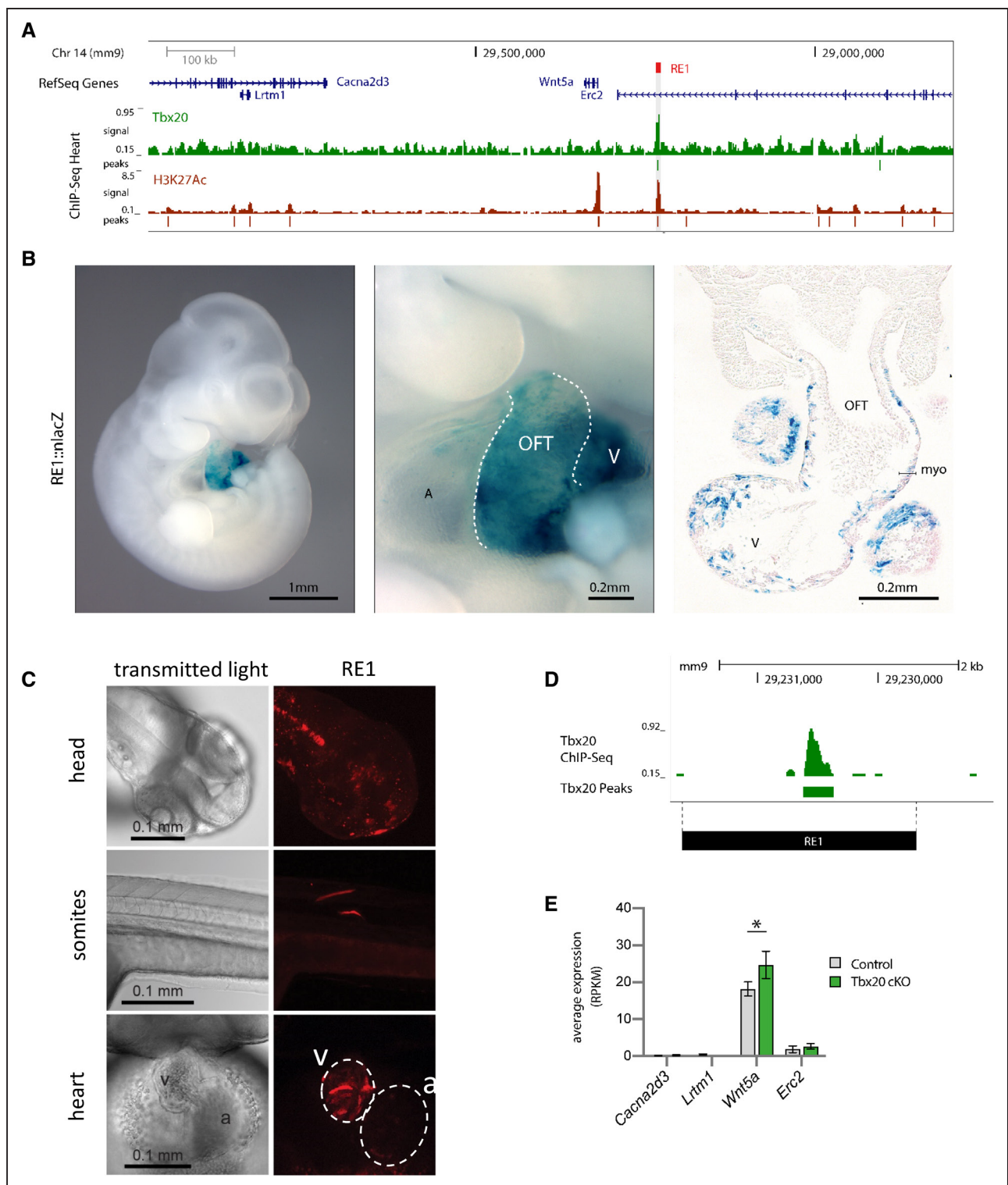


Figure 3. Characterization of RE1 in mouse and zebrafish.

A, Genome browser view from the mouse orthologous *Wnt5a* genomic region. ChIP-seq tracks of TBX20 and H3K27Ac are displayed below. **B**, Representative embryos showing that RE1-lacZ reporter expression is observed in the developing murine heart, including outflow tract myocardium and ventricles. In total, 5 embryos were analyzed. A, atrium; V, ventricle; OFT, outflow tract. **C**, Representative image of 2dpf zebrafish showing RE1 activity in various organs and tissues, including the heart. In total, 296 embryos were analyzed. White dashed lines represent boundaries of ventricle and atrium. v: ventricle; a: atrium. **D**, TBX20 ChIP-Seq demonstrating RE1 to be bound by TBX20. **E**, Expression levels (average normalized read counts and SD) of *Wnt5a* and flanking genes in E11.5 FACS sorted cardiomyocytes from control (n=4) and cTnT-Cre;*Tbx20* mutant murine hearts (n=4), * $P=0.04$, using limma³⁹ adjusted for multiple testing using Benjamini-Hochberg correction.

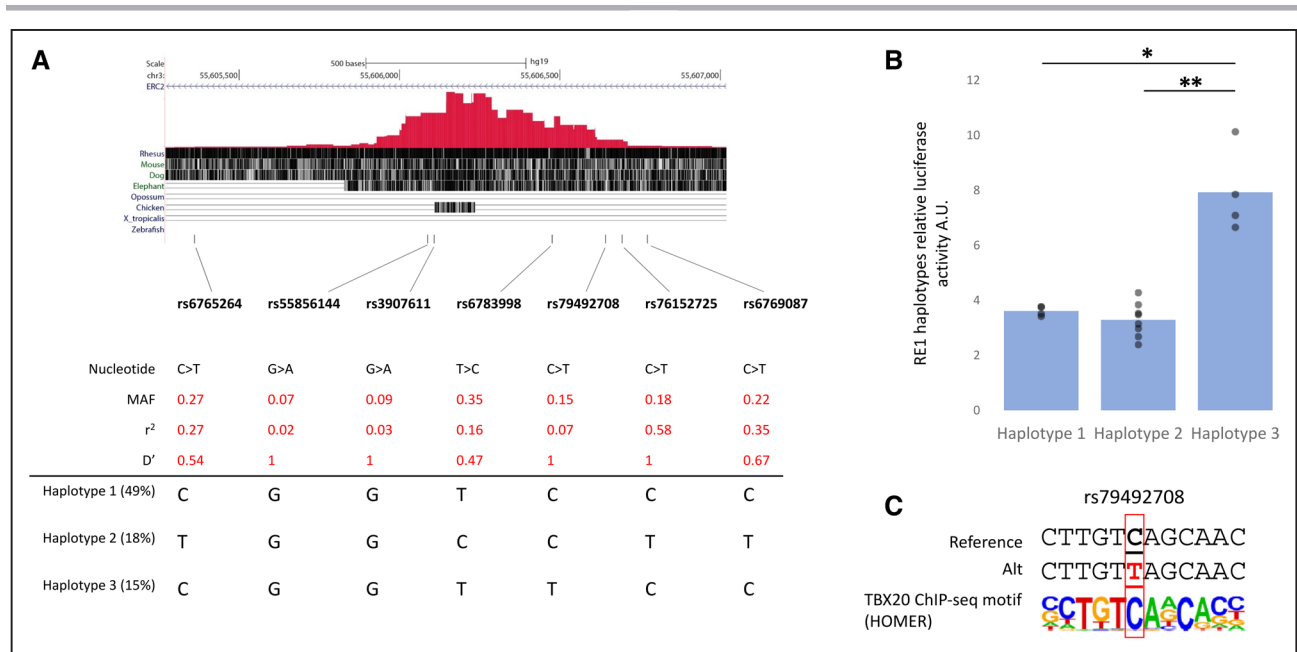


Figure 4. Regulatory activity of RE1 for the 3 major human haplotypes in vitro.

A, Genome browser view from the human RE1 region (ie, chr3:55,605,229-55,607,027; GRCh37), depicting the location and characteristics of the single nucleotide polymorphisms (SNPs) within RE1 and the 3 major haplotypes. Provided r^2 and D-prime are in relationship to the lead SNP rs56219800. **B**, Luciferase activity were measured in HL1 cells transfected with constructs for RE1 haplotype 1 (n=4), haplotype 2 (n=8), and haplotype 3 (n=4). Values were normalized to the activity of empty pGL4-SCP1-luc. * $P=2.6 \times 10^{-5}$, ** $P=2.6 \times 10^{-6}$ (1-way ANOVA). **C**, TBX20 motif sequence as identified by HOMER motif analysis showing rs79492708 abolishes a TBX20-binding site.

abrogate a bona fide TBX20 binding site with high confidence (Figure 4C). Despite the observed increase in reporter activity for rs79492708 and the likely role of TBX20 in modulating this activity, it is unlikely that this SNP alone drives the observed association in the GWAS as the r^2 between the lead SNP and rs79492708 was only 0.07 (Figure 4A). We were unable to determine the independent effect of rs79492708 on D-TGA status in patients as it has a D prime of 1 with the lead SNP from GWAS (ie, with rs56219800). Additional in-depth analysis of currently available epigenetic data did not identify other putative regulatory elements overlapping the association signal (45 kb, defined by the lead SNP and SNPs with $r^2 \geq 0.5$) (Figure 2), precluding the targeted analysis of additional candidate SNPs.

While the exact causal SNP(s) remains to be elucidated, in aggregate the above studies in mice, zebrafish and HL-1 cells demonstrate functionality of a noncoding regulatory element overlapping the genome-wide signal at 3p14.3 and support an effect of the locus through modulation of expression of *WNT5A*, a gene strongly implicated in OFT development.

DISCUSSION

We conducted the first case-control GWAS in patients with D-TGA. We identified a genome-wide significant locus on chromosome 3 that was subsequently replicated in an independent set of patients with D-TGA. Using SNP-based heritability analysis, we demonstrated

that a quarter of variance in susceptibility to D-TGA may be attributable to common genetic variation, supporting a complex genetic inheritance. Through in vitro cellular and in vivo mouse and zebrafish studies, we provided multilevel evidence that the 3p14.3 locus contains a regulatory element that robustly drives expression in the developing cardiac outflow tract. Furthermore, our data support an effect of this regulatory element on the expression of *WNT5A*, a gene strongly implicated in OFT development, providing evidence for a causal role of this gene in susceptibility to TGA.

We studied the contribution of common genetic variants to susceptibility for D-TGA in individuals of European descent, leading to the identification of a risk locus on chromosome 3. Although the relatively small sample size of patients with this rare disease limited our statistical power to identify additional genetic variants at the conventional genome-wide statistical significance level, the SNP-heritability analysis we conducted demonstrated that 25% of variance in risk (on the liability scale) for D-TGA in our sample was attributable to additive effects of (the studied) common variants. Furthermore, a genome-wide polygenic risk score derived from the discovery set was associated with D-TGA in the replication set, also after removal of the 3p14.3 locus. Collectively, these results support a complex genetic inheritance and suggest that an accumulation of many common genetic variants together are likely to have a substantial effect on risk of D-TGA. Low frequency or rare variants (minor allele frequency <1%) likely also

contribute to risk for D-TGA, although they are hard to identify with the current cohort sizes. Moreover, genetic factors predisposing to D-TGA likely comprise other variant classes besides single nucleotide variants (eg, copy number variants^{54,55}) and other genetic effects besides inherited genetic effects (eg, maternal genetic factors²¹ and de novo variants).

WNT5A emerged as the most likely causal gene at the 3p14.3 locus, based on chromatin topology at the locus, eQTL analysis, and its known function in outflow tract development. *WNT5A* encodes one of the 19 WNT (Wingless/integrase 1) family glycoproteins and activates several Wnt signaling pathways essential for normal development.²⁴ In humans, autosomal dominant loss-of-function mutations in *WNT5A* lead to Robinow syndrome,^{56,57} characterized by skeletal and facial abnormalities. While this syndrome typically does not include CHD, one report described a fetus with a homozygous *WNT5A* loss-of-function mutation and persistent truncus arteriosus, a severe OFT defect.⁵⁸ In mice, it has been shown that *Wnt5a* is expressed in secondary heart field progenitor cells in the caudal splanchnic mesoderm, adjacent to the cardiac OFT.⁴⁹ Complete absence of *Wnt5a* in mice resulted in multiorgan abnormalities⁴⁴ and severe cardiac OFT defects, including D-TGA.^{45,49} Additionally, *Wnt5a* expression throughout the entire splanchnic mesoderm led to OFT shortening and cardiac looping defects.⁵² *WNT5a* is involved in many different (cardiac) developmental pathways. For instance, *WNT5a* is known to activate the planar cell polarity pathway^{59,60} and modulate cell cohesion⁵² in the secondary heart field creating a push and pulling force, essential for proper OFT elongation and subsequent looping and alignment over the inter-ventricular septum. Furthermore, it has also been suggested that *WNT5a* acts as a morphogen providing directional signals from the pharyngeal mesoderm to the adjacent cardiac neural crest cells,⁴⁵ and *WNT5a* can inhibit the canonical (β -catenin dependent) Wnt signaling pathway.^{61,62} The ablation of β -catenin, the main effector of canonical Wnt signaling, from the developing mouse heart led to disturbed secondary heart field development and subsequently to abnormal cardiac looping and right ventricle formation.⁶³ Interestingly, *Wnt5a* is regulated by *Tbx1*,⁶⁴ which is essential for OFT development⁶⁵ and the major player in DiGeorge syndrome. Taken together, these data suggest that altered *Wnt5a* expression could impact various (cardiac) developmental pathways and makes it a plausible candidate gene at the locus, although the exact mechanisms need to be further elucidated. In contrast to *WNT5A*, *ERC2*, the other gene in the TAD, is a less likely candidate gene at the locus based on the lack of expression in the developing mouse heart and the absence of a cardiac phenotype in *Erc2* knock-out mice.⁶⁶

We integrated various epigenetic datasets⁴² and showed that the 3p14.3 association signal overlaps a

putative regulatory element (ie, RE1). We showed that RE1 drives strong expression in mice at E10.5 in both the cardiac OFT myocardium and ventricles, regions that normally also express *Wnt5a* during this stage of development,⁴⁹ and that RE1 interacts with *WNT5A*. In addition, we established that RE1 binds *TBX20* and that *Wnt5a* expression is increased in cardiac-specific *Tbx20* knock-out mice. These observations suggest that RE1 is needed to regulate *Wnt5a* expression in the developing heart and that the effect of RE1 is attenuated by *TBX20* binding. Together with the fact that *Wnt5a* transgenic mouse models^{45,52} and *Tbx20* null mice⁵³ exhibit outflow tract abnormalities, this further supports a possible causal role of *WNT5A* at the locus and suggests that RE1 may be in some way involved in the underlying genetic mechanism.

Surprisingly, deletion of RE1 in mice did not result in an abnormal phenotype or gene expression changes. Previous studies have shown that regulatory element redundancy is a hallmark of mammalian genomes.^{50,51} This means that when an entire regulatory element is absent, as is the case for RE1^{-/-}, redundant elements in the locus compensate, thus providing a means of protection from detrimental phenotypes caused by loss of individual regulatory elements.

We searched for the causal variant within RE1 and demonstrated that all 3 major haplotypes overlapping RE1, showed robust enhancer activity. A SNP on one of these haplotypes (rs79492708) abrogates a *TBX20* binding site, and this haplotype significantly increases its activity compared with the other 2 haplotypes. However, given the low r^2 (0.07) between rs79492708 and rs56219800 (lead SNP), we concluded this was not the causal SNP driving the association at the 3p14.3 locus. Future studies will be needed to show if the causal SNP is another SNP (or a combination of SNPs) within RE1, although in silico analysis did not identify alteration of putative TF-binding sites other than the *TBX20* one. Alternatively, the causal SNP(s) is/are located outside of RE1, although scrutiny of currently available epigenetic data did not identify other putative regulatory elements overlapping the association signal (45 kb, defined by the lead SNP and SNPs with $r^2 \geq 0.5$).

With regards to the many other loci just below the genome-wide significance threshold, many of these loci contain genes that are related to cardiac morphogenesis, some of which have been previously specifically linked to cardiac OFT defects. For example, a risk locus on chromosome 3 is located within the same TAD as *TBX3*. *TBX3* deficiency in mice results in double outlet right ventricle,^{67,68} an OFT defect which, similar to D-TGA, results from an alignment defect of the great vessels.⁶⁹ A subset of these genes from other loci have also previously been shown to harbor rare variants in families with cardiac OFT defects (eg, *NKX2-6*^{70,71}) or in probands included in large-scale studies of subjects with CHD.⁴⁶⁻⁴⁸

Some of these genes have been shown to be involved in left-right patterning and ciliopathies (eg, *EFCAB1*⁷² and *KIAA0586*⁷³). Although we excluded patients with known laterality defects in this study, variants in genes associated with heterotaxia have also been identified in patients with D-TGA in the absence of other extra-cardiac defects.^{78,10,74} Moreover, cilia(-related) genes have been strongly implicated in CHD in mice⁷⁵ as well as in a variety of CHD patients.^{48,76} Interestingly, the risk locus at 16p13.11 overlaps a rare copy number variant (CNV) identified in a D-TGA patient⁵⁴ and is a region where recurrent CNVs have been reported in patients with CHD.^{55,77} This CNV includes the gene *MYH11*, which is primarily known for its involvement in familial thoracic aortic aneurysm, but recessive mutations have also been identified in a patient with D-TGA.⁴⁷ Thus, it is likely that at least some of the identified subthreshold loci are *bona fide* susceptibility loci. Increasing the sample size, although challenging given the rarity of D-TGA, would thus likely uncover additional significantly associated loci that could aid in dissecting the developmental pathways contributing to D-TGA. Future studies will also be needed to show whether these findings can be generalized to patients of other ethnic backgrounds.

The results from this study should be considered in the light of some limitations. Since the majority of patients included in this study did not undergo any other genetic testing, we cannot rule out that some cases will have rare genetic variants or CNVs. However, a recent study in patients with severe neurodevelopmental disorders found no difference in the role of common genetic variants between patients with a likely diagnostic rare variant and those without such a variant.⁷⁸ Heritability estimation may cause biased results in ascertained case-control datasets, as is the case in this study. However, we performed stringent genotypic QC and used Phenotype-Correlation-Genotype-Correlation to account for case over-sampling. To minimize stratification bias because of mixed ethnicity or platform differences, we also estimated SNP-heritability in a more homogenous group (Dutch only, all genotyped on the Illumina HumanOmniExpress array), which showed similar results. In addition, this GWAS was restricted to individuals of European descent. Analysis in non-European cohorts will be necessary to explore if the results are applicable to individuals of other ancestries, and to further refine the genome-wide association signal. Despite these limitations, a main strength of this study is that we have collected the largest set of D-TGA patients thus far, which allowed us to identify and replicate a genome-wide significant locus and allowed us to perform extensive *in vitro* and *in vivo* experiments demonstrating the functional relevance of this locus.

In conclusion, this work provides the first evidence of a marked contribution of genome-wide common genetic variation to the risk of D-TGA and suggests that dysregulation of *WNT5A* may partly underlie susceptibility to

D-TGA. Increasing knowledge about the genetic cause of D-TGA will contribute to improved genetic counseling of individuals and families affected by CHD and, specifically, D-TGA.

ARTICLE INFORMATION

Received April 9, 2020; revision received December 7, 2021; accepted December 9, 2021.

Affiliations

Department of Clinical and Experimental Cardiology, Amsterdam University Medical Centers, University of Amsterdam, Heart Center, Amsterdam Cardiovascular Sciences, The Netherlands (D.S.-M., R.T., O.I.W., F.V.Y.T., N.L., E.M.L., L.B., B.J.B., B.J.M., C.R.B.). Department of Human Genetics, Amsterdam University Medical Centers, The Netherlands (D.S.-M., E.M.L., A.V.P.). Department of Medicine, Cardiovascular Genetics Center, Montreal Heart Institute and Faculty of Medicine, Université de Montréal, Montreal, Québec, Canada (R.T., M.-A.C.). Department of Medical Biology, Amsterdam University Medical Centers, University of Amsterdam, Amsterdam Cardiovascular Sciences, the Netherlands (F.M.B., J.H.v.W., P.B., A.I., K.v.D., V.M.C., A.V.P.). Hubrecht Institute-KNAW and University Medical Center Utrecht, the Netherlands (F.T., J.B., C.J.B.). Department of Cardiology, University Medical Center Utrecht, The Netherlands (O.I.W., G.T.S., F.M.). Unité Médico-Chirurgicale de Cardiologie Congénitale et Pédiatrique, Centre de référence Malformations Cardiaques Congénitales Complexes - M3C, Hôpital Necker Enfants Malades, APHP and Université Paris Descartes, Sorbonne Paris Cité, Paris, France (F.B., D.B.). Population Health Sciences Institute, Newcastle University, Newcastle, United Kingdom (H.J.C.). Human Genetics Center, Department of Epidemiology, Human Genetics, and Environmental Sciences, UTHealth School of Public Health, Houston, TX (A.J.A.). Heart Centre for Children, The Children's Hospital at Westmead and Sydney Medical School, Faculty of Medicine and Health, University of Sydney, Australia (G.M.B., D.S.W.). Department of Clinical Genetics, Leiden University Medical Center, The Netherlands (D.Q.C.M.B.-S.). University of Leuven, Belgium (M.G.). Cardiovascular Genetics, Department of Pediatrics, CHU Sainte-Justine, Université de Montréal, Québec, Canada (C.P., G.A.). The Jackson Laboratory, Bar Harbor, ME (C.P.). Division of Pediatric Cardiology, Department of Pediatrics (R.B., R.L.F.v.d.P.) and Department of Cardiology (H.W.V.), Leiden University Medical Center, The Netherlands. Institute of Genetic Epidemiology, Helmholtz Zentrum München - German Research Center for Environmental Health, Neuherberg, Germany (M.M.-N.). IBE, Faculty of Medicine, LMU Munich, Germany (M.M.-N.). Institute of Medical Biostatistics, Epidemiology and Informatics (IMBEI), University Medical Center, Johannes Gutenberg University, Mainz, Germany (M.M.-N.). Department of Cardiology, Amsterdam University Medical Centers, VU Amsterdam, The Netherlands (T.C.K.). Department of Cardiology, University Medical Center Groningen, University of Groningen, The Netherlands (J.P.v.M.). Department of Cardiology, Radboud University Medical Center, Nijmegen, The Netherlands (A.P.J.v.D., R.R.J.v.K.). Department of Cardiology, Maastricht University Medical Center, The Netherlands (R.R.J.v.K.). Department of Cardiology, Erasmus Medical Center, Erasmus University, Rotterdam, The Netherlands (J.W.R.-H.). Saarland University Medical Center, Department of Pediatric Cardiology, Homburg, Germany (H.A.-K.). German Heart Center Berlin, Department of Congenital Heart Disease, Pediatric Cardiology, DZHK (German Centre for Cardiovascular Research), Partner Site Berlin, Germany (F.B., S.S.). Charité, Universitätsmedizin Berlin, Department for Paediatric Cardiology, Germany (F.B.). Department of Pediatric Cardiology, Friedrich-Alexander-University of Erlangen-Nuernberg (FAU), Germany (S.D., J.M.). Department of Congenital Heart Disease and Pediatric Cardiology, University Hospital Schleswig-Holstein/Campus Kiel, DZHK (German Centre for Cardiovascular Research), partner site Hamburg/Kiel/Lübeck, Germany (M.-P.H.). Department of Human Genetics, University Medical Center Schleswig-Holstein, Kiel, Germany (M.-P.H.). Leipzig Heart Center, Department of Pediatric Cardiology, University of Leipzig, Germany (F.-T.R.). Heart and Diabetes Center NRW, Center of Congenital Heart Disease, Ruhr-University of Bochum, Bad Oeynhausen, Germany (S.S.). Sorbonne Paris Nord (Paris 13) University, Inserm U1153, Inrae U1125, Cnam, Nutritional Epidemiology Research Team (EREN), Epidemiology and Statistics Research Center - University of Paris (CRESS), Bobigny, France (P.G.). McGill Genome Centre and Department of Human Genetics, McGill University, Montreal, Québec, Canada (M.L., H.M.M.). Maurice Wohl Clinical Neuroscience Institute, Department of Basic and Clinical Neuroscience, King's College London, United Kingdom (A.A.-C.). United Kingdom Dementia Research Institute Centre, Maurice Wohl Clinical Neuroscience Institute, Institute of Psychiatry, Psychology and Neuroscience, King's College London, United Kingdom (C.E.S.). Centre for Brain Research, University of Auckland, New Zealand (C.E.S.). Sheffield Institute for Translational

Neuroscience (SITraN), University of Sheffield and NIHR Sheffield Biomedical Research Centre for Translational Neuroscience, United Kingdom (P.J.S.). Faculty of Medicine Health & Life Sciences, Queens University Belfast, United Kingdom (K.E.M.). Department of Neurology, UMC Utrecht Brain Center, University Medical Center Utrecht, Utrecht University, Utrecht, The Netherlands (J.H.V., L.H.v.d.B.). Skaggs School of Pharmacy and Pharmaceutical Sciences, University of California, San Diego (S.E.). Department of Human Genetics, University of Chicago, IL (M.A.N., I.A.). Helmholtz Zentrum Munich, Institut of Human Genetics, Neuherberg, Germany (M.R.-B., T.M.). TUM-HMGU Institute of Human Genetics, School of Medicine, Institute of Human Genetics, Munich, Germany (T.M.). DZHK (German Centre for Cardiovascular Research), partner site Munich Heart Alliance, Germany (T.M.). Peter Munk Cardiac Center, Toronto Congenital Cardiac Centre for Adults and University of Toronto, Canada (E.O.). Division of Cardiology, Department of Pediatrics, McMaster University, Hamilton, Ontario, Canada (T.M.). Division of Cardiology, Department of Medicine, London Health Sciences Centre, ON, Canada (L.B.). Division of Cardiology, Department of Pediatrics, Kingston General Hospital, ON, Canada (J.F.S.). Western University, Ontario, Canada (L.A.-D.). Division of Cardiology, Department of Pediatrics, Children's Hospital of Eastern Ontario, Ottawa, Canada (J.L.). Department of Epidemiology, Mailman School of Public Health, Columbia University, NY (J.K.). Clinical Genetics Research Program, Centre for Addiction and Mental Health (A.S.B.). Department of Psychiatry, University of Toronto, Toronto General Hospital, University Health Network, Ontario, Canada (A.S.B.). CPDPN, Hôpital MFME, CHU Martinique, Fort de France, Martinique, France (P.B.). Department of Pediatric Cardiology, Emma Children's Hospital Amsterdam University Medical Centers (AMC), The Netherlands (S.-A.B.C.). Centre for Congenital Heart Disease Amsterdam-Leiden (CAHAL) (S.-A.B.C.). Center for Human Genetics University Hospitals KU Leuven, Belgium (J.B.). Department of Clinical Genetics, University Medical Center Groningen, University of Groningen, The Netherlands (W.S.K.-F.). National Register for Congenital Heart Defects, DZHK (German Centre for Cardiovascular Research), Berlin, Germany (U.M.M.B.). Hospital for Sick Children, University of Toronto, Ontario, Canada (S.M.). Division of Cardiology, Children's Hospital of Philadelphia and Department of Pediatrics, University of Pennsylvania Perelman School of Medicine, Philadelphia, PA (E.G.). Division of Cardiovascular Sciences, School of Medical Sciences, Faculty of Biology, Medicine and Health, The University of Manchester and Manchester University NHS Foundation Trust, Manchester Academic Health Science Centre, United Kingdom (B.K.). Department of Clinical Epidemiology, Biostatistics and Bioinformatics, Amsterdam Public Health (APH), Amsterdam University Medical Centers, University of Amsterdam, The Netherlands (M.W.T.T.). Division of Heart and Lungs, Department of Medical Physiology, University Medical Center Utrecht, the Netherlands (J.B.).

Acknowledgments

We thank Sylvia Mantels and Lia C.J.M. Engelfriet-Rijk for their valuable work recruiting patients and managing the CONCOR registry. We thank Iwan Vaandrager and Wouter de Laat from the Hubrecht Institute in Utrecht for their help in generating the virtual 4C figure. The KORA-Study Group consists of A. Peters (speaker), H. Schulz, L. Schwettmann, R. Leidl, M. Heier, K. Strauch, and their co-workers, who are responsible for the design and conduct of the KORA studies.

Sources of Funding

This work has been funded by the Dutch Heart Foundation (CVON project 2014-18 CONCOR-genes) (to B.J. Bouma, C.R. Bezzina, J. Bakkers, M.W.T. Tanck, and V.M. Christoffels), a research grant from the Children's Heart Foundation (to C.R. Bezzina) and by Foundation Leducq (to V.M. Christoffels). R. Tadros received support from the Canadian Heart Rhythm Society's George Mines Award, the European Society of Cardiology research award, and the Philippa and Marvin Carsley Cardiology Chair and is currently a clinical research scholar of the Fonds de Recherche du Québec-Santé. F. Bajolle is funded by the Assistance Publique – Hôpitaux de Paris (APHP). G.M. Blue is supported by a Heart Foundation Postdoctoral Fellowship (101894). The work of E.M. Lodder is partly financed by the Dutch Research Council (NWO) through the NWO Talent Scheme VIDI-91718361 and the CVON RESCUED project. M. Müller-Nurasyid is supported by the department of Internal Medicine I (Cardiology), Hospital of the Ludwig-Maximilians-University (LMU) Munich, Munich, Germany. P.J. Shaw is supported as a NIHR Senior Investigator and by the Sheffield NIHR Biomedical Research Centre. E. Oechslin currently holds the Bitove Family Professorship of Adult Congenital Heart Disease. Collection of the samples provided by J. Kline was supported by NIH grant R01HL-08146 from National Heart, Lung, and Blood Institute (NHLBI) to Dorothy Warburton and Mike Wigler. The sequencing for this work was supported by a grant to the Baylor-Hopkins Center for Mendelian Genomics (5UM1HG006542) from National Human Genome Research Institute (NHGRI) and NHLBI. A.S. Bassett received support for this study from research grants from the Canadian Institutes of Health Research (CIHR) (MOP-93722) and the University of Toronto

McLaughlin Centre. A.S. Bassett holds the Dalglish Chair in 22q11.2 Deletion Syndrome at the University of Toronto and University Health Network. R.L.F. van der Palen is supported by The Dutch Heart Foundation (grant number 2014T087). J. Breckpot is supported by a Senior Clinical Investigator Fellowship of the FWO - Flanders. S. Mital is supported by Canadian Institutes of Health Research, under the frame of ERA PerMed, Heart and Stroke Foundation of Canada, Ted Rogers Centre for Heart Research. E. Goldmuntz received support for this study from research grants from the Eunice Kennedy Shriver National Institute of Child Health and Human Development (P01HD070454); the NHLBI (P50-HL74731), including the Pediatric Cardiac Genomics Consortium (PCGC) (U01-HL098188, U01HL131003, U01-HL098147, U01-HL098153, U01-HL098163, U01-HL098123, U01-HL098162, U01-HL-09003); the NHGRI (U54HG006504); the National Center for Research Resources (M01-RR-000240, RR024134; now the National Center for Advancing Translational Sciences, grant number UL1TR000003). B. Keavney is funded by a British Heart Foundation Personal Chair. D. Bonnet is funded by Association pour la Recherche en Cardiologie du Fœtus à l'Adulte (ARCFA) and Fondation Cœur et Artères. The MINE study (J.H. Veldink) has received funding from the European Research Council (ERC) under the European Union's Horizon 2020 research and innovation programme (grant agreement n° 772376 – ESCORIAL). The collaboration project is co-funded by the PPP Allowance made available by Health-Holland, Top Sector Life Sciences & Health, to stimulate public-private partnerships. The KORA study was initiated and financed by the Helmholtz Zentrum München – German Research Center for Environmental Health, which is funded by the German Federal Ministry of Education and Research (BMBF) and by the State of Bavaria. Furthermore, KORA research was supported within the Munich Center of Health Sciences (MC-Health), Ludwig-Maximilians-Universität, as part of LMUinnovat. This study makes use of data generated by the Wellcome Trust Case-Control Consortium. A full list of the investigators who contributed to the generation of the data is available from www.wtccc.org.uk. Funding for the project was provided by the Wellcome Trust under award 076113, 085475, and 090355. This work was supported by the Competence Network for Congenital Heart Defects, which has received funding from the Federal Ministry of Education and Research, grant number 01GI0601 (until 2014), and the DZHK (German Centre for Cardiovascular Research; as of 2015). A subset of the data used in the replication cohort were generated by the PCGC, under the auspices of the NHLBI's Bench to Bassinet Program <https://benchto Bassinet.com> (dbGaP Study Accession: phs001194.v2.p2). The PCGC program is funded by the NHLBI, National Institutes of Health, U.S. Department of Health and Human Services through grants UM1HL128711, UM1HL098162, UM1HL098147, UM1HL098123, UM1HL128761, and U01HL131003. This article was not prepared in collaboration with investigators of the PCGC, has not been reviewed and/or approved by the PCGC, and does not necessarily reflect the opinions of the PCGC investigators or the NHLBI.

Disclosures

None.

Supplemental Material

Supplemental Methods

Figures S1–S9

Tables S1–S9

References^{77–103}

Major Resource Table

REFERENCES

- Martins P, Castela E. Transposition of the great arteries. *Orphanet J Rare Dis*. 2008;3:27. doi: 10.1186/1750-1172-3-27
- van der Bom T, Bouma BJ, Meijboom FJ, Zwinderman AH, Mulder BJ. The prevalence of adult congenital heart disease, results from a systematic review and evidence based calculation. *Am Heart J*. 2012;164:568–575. doi: 10.1016/j.ahj.2012.07.023
- Williams WG, McCrindle BW, Ashburn DA, Jonas RA, Mavroudis C, Blackstone EH; Congenital Heart Surgeon's Society. Outcomes of 829 neonates with complete transposition of the great arteries 12-17 years after repair. *Eur J Cardiothorac Surg*. 2003;24:1–9; discussion 9. doi: 10.1016/s1010-7940(03)00264-1
- Zomer AC, Bouma BJ, Mulder BJ, van der Bom T, Carla Zomer A, Zwinderman AH, Meijboom FJ, Bouma BJ, Mulder BJ. The changing epidemiology of congenital heart disease. *Nat Rev Cardiol*. 2010;8:50–60. doi:10.1038/nrcardio.2010.166
- Mégarbané A, Salem N, Stephan E, Ashoush R, Lenoir D, Delague V, Kassab R, Loiselet J, Bouvagnet P. X-linked transposition of the great arteries and

- incomplete penetrance among males with a nonsense mutation in ZIC3. *Eur J Hum Genet*. 2000;8:704–708. doi: 10.1038/sj.ejhg.5200526
6. Chhin B, Hatayama M, Bozon D, Ogawa M, Schön P, Tohmonda T, Sassolas F, Aruga J, Valard AG, Chen SC, et al. Elucidation of penetrance variability of a ZIC3 mutation in a family with complex heart defects and functional analysis of ZIC3 mutations in the first zinc finger domain. *Hum Mutat*. 2007;28:563–570. doi: 10.1002/humu.20480
 7. D'Alessandro LC, Latney BC, Paluru PC, Goldmuntz E. The phenotypic spectrum of ZIC3 mutations includes isolated d-transposition of the great arteries and double outlet right ventricle. *Am J Med Genet A*. 2013;161A:792–802. doi: 10.1002/ajmg.a.35849
 8. Goldmuntz E, Bamford R, Karkera JD, dela Cruz J, Roessler E, Muenke M. CFC1 mutations in patients with transposition of the great arteries and double-outlet right ventricle. *Am J Hum Genet*. 2002;70:776–780. doi: 10.1086/339079
 9. Bamford RN, Roessler E, Burdine RD, Saplakoğlu U, dela Cruz J, Splitt M, Goodship JA, Towbin J, Bowers P, Ferrero GB, et al. Loss-of-function mutations in the EGF-CFC gene CFC1 are associated with human left-right laterality defects. *Nat Genet*. 2000;26:365–369. doi: 10.1038/81695
 10. De Luca A, Sarkozy A, Consoli F, Ferese R, Guida V, Dentici ML, Mingarelli R, Bellacchio E, Tuo G, Limongelli G, et al. Familial transposition of the great arteries caused by multiple mutations in laterality genes. *Heart*. 2010;96:673–677. doi: 10.1136/hrt.2009.181685
 11. Becker TA, Van Amber R, Moller JH, Pierpont ME. Occurrence of cardiac malformations in relatives of children with transposition of the great arteries. *Am J Med Genet*. 1996;66:28–32. doi: 10.1002/(SICI)1096-8628(19961202)66:1<28::AID-AJMG7>3.0.CO;2-S
 12. Peyvandi S, Ingall E, Woyciechowski S, Garbarini J, Mitchell LE, Goldmuntz E. Risk of congenital heart disease in relatives of probands with conotruncal cardiac defects: an evaluation of 1,620 families. *Am J Med Genet A*. 2014;164A:1490–1495. doi: 10.1002/ajmg.a.36500
 13. Digilio MC, Casey B, Toscano A, Calabrò R, Pacileo G, Marasini M, Banaudi E, Giannotti A, Dallapiccola B, Marino B. Complete transposition of the great arteries: patterns of congenital heart disease in familial recurrence. *Circulation*. 2001;104:2809–2814. doi: 10.1161/hc4701.099786
 14. Burn J, Brennan P, Little J, Holloway S, Coffey R, Somerville J, Dennis NR, Allan L, Arnold R, Deanfield JE, et al. Recurrence risks in offspring of adults with major heart defects: results from first cohort of British collaborative study. *Lancet*. 1998;351:311–316. doi: 10.1016/s0140-6736(97)06486-6
 15. Fesslova V, Brankovic J, Lalatta F, Villa L, Meli V, Piazza L, Ricci C. Recurrence of congenital heart disease in cases with familial risk screened prenatally by echocardiography. *J Pregnancy*. 2011;2011:368067. doi: 10.1155/2011/368067
 16. Loffredo CA, Chokkalingam A, Sill AM, Boughman JA, Clark EB, Scheel J, Brenner JI. Prevalence of congenital cardiovascular malformations among relatives of infants with hypoplastic left heart, coarctation of the aorta, and d-transposition of the great arteries. *Am J Med Genet A*. 2004;124A:225–230. doi: 10.1002/ajmg.a.20366
 17. Cordell HJ, Bentham J, Topf A, Zelenika D, Heath S, Mamasoula C, Cosgrove C, Blue G, Granados-Riveron J, Setchfield K, et al. Genome-wide association study of multiple congenital heart disease phenotypes identifies a susceptibility locus for atrial septal defect at chromosome 4p16. *Nat Genet*. 2013;45:822–824. doi: 10.1038/ng.2637
 18. Cordell HJ, Topf A, Mamasoula C, Postma AV, Bentham J, Zelenika D, Heath S, Blue G, Cosgrove C, Granados Riveron J, et al. Genome-wide association study identifies loci on 12q24 and 13q32 associated with tetralogy of Fallot. *Hum Mol Genet*. 2013;22:1473–1481. doi: 10.1093/hmg/dd552
 19. Hanchard NA, Swaminathan S, Bucacas K, Furthner D, Fernbach S, Azamian MS, Wang X, Lewin M, Towbin JA, D'Alessandro LC, et al. A genome-wide association study of congenital cardiovascular left-sided lesions shows association with a locus on chromosome 20. *Hum Mol Genet*. 2016;25:2331–2341. doi: 10.1093/hmg/ddw071
 20. Mitchell LE, Agopian AJ, Bhalla A, Glessner JT, Kim CE, Swartz MD, Hakonarson H, Goldmuntz E. Genome-wide association study of maternal and inherited effects on left-sided cardiac malformations. *Hum Mol Genet*. 2015;24:265–273. doi: 10.1093/hmg/ddu420
 21. Agopian AJ, Mitchell LE, Glessner J, Bhalla AD, Sewda A, Hakonarson H, Goldmuntz E. Genome-wide association study of maternal and inherited loci for conotruncal heart defects. *PLoS One*. 2014;9:e96057. doi: 10.1371/journal.pone.0096057
 22. Hu Z, Shi Y, Mo X, Xu J, Zhao B, Lin Y, Yang S, Xu Z, Dai J, Pan S, et al. A genome-wide association study identifies two risk loci for congenital heart malformations in Han Chinese populations. *Nat Genet*. 2013;45:818–821. doi:10.1038/ng.2636
 23. Agopian AJ, Goldmuntz E, Hakonarson H, Sewda A, Taylor D, Mitchell LE, Pediatric Cardiac Genomics Consortium. Genome-wide association studies and Meta-analyses for congenital heart defects. *Circ Cardiovasc Genet*. 2017;10:e001449. doi:10.1161/CIRCGENETICS.116.001449
 24. Kumawat K, Gosens R. WNT-5A: signaling and functions in health and disease. *Cell Mol Life Sci*. 2016;73:567–587. doi: 10.1007/s00018-015-2076-y
 25. Purcell S, Neale B, Todd-Brown K, Thomas L, Ferreira MA, Bender D, Maller J, Sklar P, de Bakker PI, Daly MJ, et al. PLINK: a tool set for whole-genome association and population-based linkage analyses. *Am J Hum Genet*. 2007;81:559–575. doi: 10.1086/519795
 26. Lee SH, Wray NR, Goddard ME, Visscher PM. Estimating missing heritability for disease from genome-wide association studies. *Am J Hum Genet*. 2011;88:294–305. doi: 10.1016/j.ajhg.2011.02.002
 27. Golan D, Lander ES, Rosset S. Measuring missing heritability: inferring the contribution of common variants. *Proc Natl Acad Sci USA*. 2014;111:E5272–E5281. doi: 10.1073/pnas.1419064111
 28. Vilhjálmsson BJ, Yang J, Finucane HK, Gusev A, Lindström S, Ripke S, Genovese G, Loh PR, Bhatia G, Do R, et al; Schizophrenia Working Group of the Psychiatric Genomics Consortium, Discovery, Biology, and Risk of Inherited Variants in Breast Cancer (DRIVE) study. Modeling linkage disequilibrium increases accuracy of polygenic risk scores. *Am J Hum Genet*. 2015;97:576–592. doi: 10.1016/j.ajhg.2015.09.001
 29. Pennacchio LA, Ahituv N, Moses AM, Prabhakar S, Nobrega MA, Shoukry M, Minovitsky S, Dubchak I, Holt A, Lewis KD, et al. In vivo enhancer analysis of human conserved non-coding sequences. *Nature*. 2006;444:499–502. doi: 10.1038/nature05295
 30. Booger CJ, Aneas I, Sakabe N, Dirschinger RJ, Cheng QJ, Zhou B, Chen J, Nobrega MA, Evans SM. Probing chromatin landscape reveals roles of endocardial TBX20 in septation. *J Clin Invest*. 2016;126:3023–3035. doi: 10.1172/JCI85350
 31. Visel A, Taher L, Girgis H, May D, Golonzka O, Hoch RV, McKinsey GL, Pattabiraman K, Silberberg SN, Blow MJ, et al. A high-resolution enhancer atlas of the developing telencephalon. *Cell*. 2013;152:895–908. doi: 10.1016/j.cell.2012.12.041
 32. van den Boogaard M, van Weerd JH, Bawazeer AC, Hooijkaas IB, van de Werken HJG, Tessadori F, de Laat W, Barnett P, Bakkens J, Christoffels VM. Identification and characterization of a transcribed distal enhancer involved in cardiac Kcnh2 regulation. *Cell Rep*. 2019;28:2704–2714.e5. doi: 10.1016/j.celrep.2019.08.007
 33. Josifova DJ, Monroe GR, Tessadori F, de Graaff E, van der Zwaag B, Mehta SG, Harakalova M, Duran KJ, Savelberg SM, Nijman IJ, et al; DDD Study. Heterozygous KIDINS220/ARMS nonsense variants cause spastic paraplegia, intellectual disability, nystagmus, and obesity. *Hum Mol Genet*. 2016;25:2158–2167. doi: 10.1093/hmg/ddw082
 34. van Eif VWW, Protze SI, Bosada FM, Yuan X, Sinha T, van Duijvenboden K, Ernault AC, Mohan RA, Wakker V, de Gier-de Vries C, et al. Genome-wide analysis identifies an essential human TBX3 pacemaker enhancer. *Circ Res*. 2020;127:1522–1535. doi: 10.1161/CIRCRESAHA.120.317054
 35. Bosada FM, Rivaud MR, Uhm JS, Verheule S, van Duijvenboden K, Verkerk AO, Christoffels VM, Boukens BJ. A variant noncoding region regulates Prx1 and predisposes to atrial arrhythmias. *Circ Res*. 2021;129:420–434. doi: 10.1161/CIRCRESAHA.121.319146
 36. Stamatoyannopoulos JA, Snyder M, Hardison R, Ren B, Gingeras T, Gilbert DM, Groudine M, Bender M, Kaul R, Canfield T, et al. An encyclopedia of mouse DNA elements (Mouse ENCODE) [Internet]. *Genome Biol*. 2012;13:418. doi:10.1186/gb-2012-13-8-418
 37. Booger CJ, Zhu X, Aneas I, Sakabe N, Zhang L, Sobreira DR, Montefiori L, Bogomolovas J, Joslin AC, Zhou B, et al. Tbx20 is required in mid-gestation cardiomyocytes and plays a central role in atrial development. *Circ Res*. 2018;123:428–442. doi: 10.1161/CIRCRESAHA.118.311339
 38. Ritchie ME, Phipson B, Wu D, Hu Y, Law CW, Shi W, Smyth GK. limma powers differential expression analyses for RNA-sequencing and microarray studies. *Nucleic Acids Res*. 2015;43:e47. doi: 10.1093/NAR/GKV007
 39. Law CW, Chen Y, Shi W, Smyth GK. voom: Precision weights unlock linear model analysis tools for RNA-seq read counts. *Genome Biol*. 2014;15:R29. doi: 10.1186/gb-2014-15-2-r29
 40. Claycomb WC, Lanson NA Jr, Stallworth BS, Egeland DB, Delcarpio JB, Bahinski A, Izzo NJ Jr. HL-1 cells: a cardiac muscle cell line that contracts and retains phenotypic characteristics of the adult cardiomyocyte. *Proc Natl Acad Sci USA*. 1998;95:2979–2984. doi: 10.1073/pnas.95.6.2979
 41. Das S, Forer L, Schönherr S, Sidore C, Locke AE, Kwong A, Vrieze SI, Chew EY, Levy S, McGue M, et al. Next-generation genotype imputation service and methods. *Nat Genet*. 2016;48:1284–1287. doi: 10.1038/ng.3656

42. van Duijvenboden K, de Boer BA, Capon N, Ruijter JM, Christoffels VM. EMERGE: a flexible modelling framework to predict genomic regulatory elements from genomic signatures. *Nucleic Acids Res.* 2016;44:e42. doi: 10.1093/nar/gkv1144
43. Bianchi V, Geeven G, Tucker N, Hilvering C, Hall A, Roselli C, Hill M, Martin J, Margulies K, Ellinor P, et al. Detailed regulatory interaction map of the human heart facilitates gene discovery for cardiovascular disease. *bioRxiv.* 2019. doi:10.1101/705715
44. Yamaguchi TP, Bradley A, McMahon AP, Jones S. A Wnt5a pathway underlies outgrowth of multiple structures in the vertebrate embryo. *Development.* 1999;126:1211–1223.
45. Schleiffarth JR, Person AD, Martinsen BJ, Sukovich DJ, Neumann A, Baker CV, Lohr JL, Cornfield DN, Ekker SC, Petryk A. Wnt5a is required for cardiac outflow tract septation in mice. *Pediatr Res.* 2007;61:386–391. doi: 10.1203/pdr.Ob013e3180323810
46. Sifrim A, Hitz MP, Wilsdon A, Breckpot J, Turki SH, Thienpont B, McRae J, Fitzgerald TW, Singh T, Swaminathan GJ, et al; INTERVAL Study; UK10K Consortium; Deciphering Developmental Disorders Study. Distinct genetic architectures for syndromic and nonsyndromic congenital heart defects identified by exome sequencing. *Nat Genet.* 2016;48:1060–1065. doi: 10.1038/ng.3627
47. Jin SC, Homsy J, Zaidi S, Lu Q, Morton S, DePalma SR, Zeng X, Qi H, Chang W, Sierant MC, et al. Contribution of rare inherited and de novo variants in 2,871 congenital heart disease probands. *Nat Genet.* 2017;49:1593–1601. doi: 10.1038/ng.3970
48. Watkins WS, Hernandez EJ, Wesolowski S, Bisgrove BW, Sunderland RT, Lin E, Lemmon G, Demarest BL, Miller TA, Bernstein D, et al. De novo and recessive forms of congenital heart disease have distinct genetic and phenotypic landscapes. *Nat Commun.* 2019;10:4722. doi: 10.1038/s41467-019-12582-y
49. Cohen ED, Miller MF, Wang Z, Moon RT, Morrisey EE. Wnt5a and Wnt11 are essential for second heart field progenitor development. *Development.* 2012;139:1931–1940. doi: 10.1242/dev.069377
50. Long HK, Prescott SL, Wysocka J. Ever-changing landscapes: transcriptional enhancers in development and evolution. *Cell.* 2016;167:1170–1187. doi: 10.1016/j.cell.2016.09.018
51. Osterwalder M, Barozzi I, Tissières V, Fukuda-Yuzawa Y, Mannion BJ, Afzal SY, Lee EA, Zhu Y, Plajzer-Frick I, Pickle CS, et al. Enhancer redundancy provides phenotypic robustness in mammalian development. *Nature.* 2018;554:239–243. doi: 10.1038/nature25461
52. Li D, Sinha T, Ajima R, Seo HS, Yamaguchi TP, Wang J. Spatial regulation of cell cohesion by Wnt5a during second heart field progenitor deployment. *Dev Biol.* 2016;412:18–31. doi: 10.1016/j.ydbio.2016.02.017
53. Ihara D, Watanabe Y, Seya D, Arai Y, Isomoto Y, Nakano A, Kubo A, Ogura T, Kawamura T, Nakagawa O. Expression of Hey2 transcription factor in the early embryonic ventricles is controlled through a distal enhancer by Tbx20 and Gata transcription factors. *Dev Biol.* 2020;461:124–131. doi: 10.1016/j.ydbio.2020.02.001
54. Costain G, Lionel AC, Ogura L, Marshall CR, Scherer SW, Silversides CK, Bassett AS. Genome-wide rare copy number variations contribute to genetic risk for transposition of the great arteries. *Int J Cardiol.* 2016;204:115–121. doi: 10.1016/j.ijcard.2015.11.127
55. Warburton D, Ronemus M, Kline J, Jobanputra V, Williams I, Anyane-Yeboah K, Chung W, Yu L, Wong N, Awad D, et al. The contribution of de novo and rare inherited copy number changes to congenital heart disease in an unselected sample of children with conotruncal defects or hypoplastic left heart disease. *Hum Genet.* 2014;133:11–27. doi: 10.1007/s00439-013-1353-9
56. Person AD, Beiraghi S, Sieben CM, Hermanson S, Neumann AN, Robu ME, Schleiffarth JR, Billington CJ Jr, van Bokhoven H, Hoogeboom JM, et al. WNT5A mutations in patients with autosomal dominant Robinow syndrome. *Dev Dyn.* 2010;239:327–337. doi: 10.1002/dvdy.22156
57. Roifman M, Marcellis CL, Paton T, Marshall C, Silver R, Lohr JL, Yntema HG, Venselaar H, Kayserili H, van Bon B, et al; FORGE Canada Consortium. De novo WNT5A-associated autosomal dominant Robinow syndrome suggests specificity of genotype and phenotype. *Clin Genet.* 2015;87:34–41. doi: 10.1111/cge.12401
58. Birgmeier J, Esplin ED, Jagadeesh KA, Guturu H, Wenger AM, Chaib H, Buckingham JA, Bejerano G, Bernstein JA. Biallelic loss-of-function WNT5A mutations in an infant with severe and atypical manifestations of Robinow syndrome. *Am J Med Genet A.* 2018;176:1030–1036. doi: 10.1002/ajmg.a.38636
59. Sinha T, Wang B, Evans S, Wynshaw-Boris A, Wang J. Disheveled mediated planar cell polarity signaling is required in the second heart field lineage for outflow tract morphogenesis. *Dev Biol.* 2012;370:135–144. doi: 10.1016/j.ydbio.2012.07.023
60. Sinha T, Li D, Théveniau-Ruissy M, Hutson MR, Kelly RG, Wang J. Loss of Wnt5a disrupts second heart field cell deployment and may contribute to OFT malformations in DiGeorge syndrome. *Hum Mol Genet.* 2015;24:1704–1716. doi: 10.1093/hmg/ddu584
61. Topol L, Jiang X, Choi H, Garrett-Beal L, Carolan PJ, Yang Y. Wnt-5a inhibits the canonical Wnt pathway by promoting GSK-3-independent β -catenin degradation. *J Cell Biol.* 2003;162:899–908. doi: 10.1083/jcb.200303158
62. Sato A, Yamamoto H, Sakane H, Koyama H, Kikuchi A. Wnt5a regulates distinct signalling pathways by binding to Frizzled2. *EMBO J.* 2010;29:41–54. doi: 10.1038/emboj.2009.322
63. Klaus A, Saga Y, Taketo MM, Tzahor E, Birchmeier W. Distinct roles of Wnt/ β -catenin and Bmp signaling during early cardiogenesis. *Proc Natl Acad Sci USA.* 2007;104:18531–18536. doi: 10.1073/pnas.0703113104
64. Chen L, Fulcoli FG, Ferrentino R, Martucciello S, Illingworth EA, Baldini A. Transcriptional control in cardiac progenitors: Tbx1 interacts with the BAF chromatin remodeling complex and regulates Wnt5a. *PLoS Genet.* 2012;8:e1002571. doi: 10.1371/journal.pgen.1002571
65. Xu H, Morishima M, Wylie JN, Schwartz RJ, Bruneau BG, Lindsay EA, Baldini A. Tbx1 has a dual role in the morphogenesis of the cardiac outflow tract. *Development.* 2004;131:3217–3227. doi: 10.1242/dev.01174
66. Kaeser PS, Deng L, Chávez AE, Liu X, Castillo PE, Südhof TC. ELK-S2alpha/CAST deletion selectively increases neurotransmitter release at inhibitory synapses. *Neuron.* 2009;64:227–239. doi: 10.1016/j.neuron.2009.09.019
67. Bakker ML, Boukens BJ, Mommersteeg MT, Brons JF, Wakker V, Moorman AF, Christoffels VM. Transcription factor Tbx3 is required for the specification of the atrioventricular conduction system. *Circ Res.* 2008;102:1340–1349. doi: 10.1161/CIRCRESAHA.107.169565
68. Mesbah K, Harrelson Z, Théveniau-Ruissy M, Papaioannou VE, Kelly RG. Tbx3 is required for outflow tract development. *Circ Res.* 2008;103:743–750. doi: 10.1161/CIRCRESAHA.108.172858
69. Barnes RM, Harris IS, Jaehnig EJ, Sauls K, Sinha T, Rojas A, Schachterle W, McCulley DJ, Norris RA, Black BL. MEF2C regulates outflow tract alignment and transcriptional control of TdGF1. *Development.* 2016;143:774–779. doi: 10.1242/dev.126383
70. Ta-Shma A, El-lahham N, Edvardson S, Stepensky P, Nir A, Perles Z, Gavri S, Golender J, Yaakobi-Simhayoff N, Shaag A, et al. Conotruncal malformations and absent thymus due to a deleterious NKX2-6 mutation. *J Med Genet.* 2014;51:268–270. doi: 10.1136/jmedgenet-2013-102100
71. Heathcote K, Braybrook C, Abushaban L, Guy M, Khetyar ME, Patton MA, Carter ND, Scambler PJ, Syrris P. Common arterial trunk associated with a homeodomain mutation of NKX2.6. *Hum Mol Genet.* 2005;14:585–593. doi: 10.1093/hmg/ddi055
72. Sasaki K, Shiba K, Nakamura A, Kawano N, Satouh Y, Yamaguchi H, Morikawa M, Shibata D, Yanase R, Jokura K, et al. Calixin is required for cilia-driven determination of vertebrate laterality. *Commun Biol.* 2019;2:226. doi: 10.1038/s42003-019-0462-y
73. Bangs F, Antonio N, Thongnuek P, Welten M, Davey MG, Briscoe J, Tickle C. Generation of mice with functional inactivation of talpid3, a gene first identified in chicken. *Development.* 2011;138:3261–3272. doi: 10.1242/dev.063602
74. Karkera JD, Lee JS, Roessler E, Banerjee-Basu S, Ouspenskaia MV, Mez J, Goldmuntz E, Bowers P, Towbin J, Belmont JW, et al. Loss-of-function mutations in growth differentiation factor-1 (GDF1) are associated with congenital heart defects in humans. *Am J Hum Genet.* 2007;81:987–994. doi: 10.1086/522890
75. Li Y, Klena NT, Gabriel GC, Liu X, Kim AJ, Lemke K, Chen Y, Chatterjee B, Devine W, Damerla RR, et al. Global genetic analysis in mice unveils central role for cilia in congenital heart disease. *Nature.* 2015;521:520–524. doi: 10.1038/nature14269
76. Nees SN, Chung WK. The genetics of isolated congenital heart disease. *Am J Med Genet C Semin Med Genet.* 2020;184:97–106. doi: 10.1002/ajmg.c.31763
77. Soemedi R, Wilson IJ, Bentham J, Darlay R, Töpf A, Zelenika D, Cosgrove C, Setchfield K, Thornborough C, Granados-Riveron J, et al. Contribution of global rare copy-number variants to the risk of sporadic congenital heart disease. *Am J Hum Genet.* 2012;91:489–501. doi: 10.1016/j.ajhg.2012.08.003
78. Niemi MEK, Martin HC, Rice DL, Gallone G, Gordon S, Kelemen M, McAloney K, McRae J, Radford EJ, Yu S, et al. Common genetic variants contribute to risk of rare severe neurodevelopmental disorders. *Nature.* 2018;562:268–271. doi: 10.1038/s41586-018-0566-4

79. Rao SS, Huntley MH, Durand NC, Stamenova EK, Bochkov ID, Robinson JT, Sanborn AL, Machol I, Omer AD, Lander ES, et al. A 3D map of the human genome at kilobase resolution reveals principles of chromatin looping. *Cell*. 2014;159:1665–1680. doi: 10.1016/j.cell.2014.11.021
80. Montefiori LE, Sobreira DR, Sakabe NJ, Aneas I, Joslin AC, Hansen GT, Bozek G, Moskowitz IP, McNally EM, Nóbrega MA. A promoter interaction map for cardiovascular disease genetics. *Elife*. 2018;7:e35788. doi: 10.7554/eLife.35788
81. Davydov EV, Goode DL, Sirota M, Cooper GM, Sidow A, Batzoglou S. Identifying a high fraction of the human genome to be under selective constraint using GERP++. *PLoS Comput Biol*. 2010;6:e1001025. doi: 10.1371/journal.pcbi.1001025
82. Hoang TT, Goldmuntz E, Roberts AE, Chung WK, Kline JK, Deanfield JE, Giardini A, Aleman A, Gelb BD, Mac Neal M, et al. The congenital heart disease genetic network study: cohort description. *PLoS One*. 2018;13:e0191319. doi: 10.1371/journal.pone.0191319
83. Gelb B, Brueckner M, Chung W, Goldmuntz E, Kaltman J, Kaski JP, Kim R, Kline J, Mercer-Rosa L, Porter G, et al; Pediatric Cardiac Genomics Consortium. The Congenital Heart Disease Genetic Network Study: rationale, design, and early results. *Circ Res*. 2013;112:698–706. doi: 10.1161/CIRCRESAHA.111.300297
84. Willer CJ, Li Y, Abecasis GR. METAL: fast and efficient meta-analysis of genomewide association scans. *Bioinformatics*. 2010;26:2190–2191. doi: 10.1093/bioinformatics/btq340
85. Yang J, Ferreira T, Morris AP, Medland SE, Madden PA, Heath AC, Martin NG, Montgomery GW, Weedon MN, Loos RJ, et al; Genetic Investigation of Anthropometric Traits (GIANT) Consortium; Diabetes Genetics Replication And Meta-analysis (DIAGRAM) Consortium. Conditional and joint multiple-SNP analysis of GWAS summary statistics identifies additional variants influencing complex traits. *Nat Genet*. 2012;44:369–75. S1. doi: 10.1038/ng.2213
86. Speed D, Hemani G, Johnson MR, Balding DJ. Improved heritability estimation from genome-wide SNPs. *Am J Hum Genet*. 2012;91:1011–1021. doi: 10.1016/j.ajhg.2012.10.010
87. Yang J, Benyamin B, McEvoy BP, Gordon S, Henders AK, Nyholt DR, Madden PA, Heath AC, Martin NG, Montgomery GW, et al. Common SNPs explain a large proportion of the heritability for human height. *Nat Genet*. 2010;42:565–569. doi: 10.1038/ng.608
88. R core team. R: A language and environment for statistical computing. R Foundation for Statistical Computing, Vienna, Austria. 2020. <http://www.r-project.org/>.
89. Khera AV, Chaffin M, Aragam KG, Haas ME, Roselli C, Choi SH, Natarajan P, Lander ES, Lubitz SA, Ellinor PT, et al. Genome-wide polygenic scores for common diseases identify individuals with risk equivalent to monogenic mutations. *Nat Genet*. 2018;50:1219–1224. doi: 10.1038/s41588-018-0183-z
90. Watanabe K, Taskesen E, van Bochoven A, Posthuma D. Functional mapping and annotation of genetic associations with FUMA. *Nat Commun*. 2017;8:1826. doi: 10.1038/s41467-017-01261-5
91. Lonsdale J, Thomas J, Salvatore M, Phillips R, Lo E, Shad S, Hasz R, Walters G, Garcia F, Young N, et al. The Genotype-Tissue Expression (GTEx) project. *Nat Genet*. 2013;45:580–585. doi:10.1038/NG.2653
92. Westra HJ, Peters MJ, Esko T, Yaghootkar H, Schurmann C, Kettunen J, Christiansen MW, Fairfax BP, Schramm K, Powell JE, et al. Systematic identification of trans eQTLs as putative drivers of known disease associations. *Nat Genet*. 2013;45:1238–1243. doi: 10.1038/ng.2756
93. Zhernakova DV, Deelen P, Vermaat M, van Iterson M, van Galen M, Arindrarto W, van 't Hof P, Mei H, van Dijk F, Westra HJ, et al. Identification of context-dependent expression quantitative trait loci in whole blood. *Nat Genet*. 2017;49:139–145. doi: 10.1038/ng.3737
94. van Ouwkerk AF, Bosada FM, van Duijvenboden K, Hill MC, Montefiori LE, Scholman KT, Liu J, de Vries AAF, Boukens BJ, Ellinor PT, et al. Identification of atrial fibrillation associated genes and functional non-coding variants. *Nat Commun*. 2019;10:4755. doi: 10.1038/s41467-019-12721-5
95. Zhang Y, Li T, Preissl S, Amaral ML, Grinstein JD, Farah EN, Destici E, Qiu Y, Hu R, Lee AY, et al. Transcriptionally active HERV-H retrotransposons demarcate topologically associating domains in human pluripotent stem cells. *Nat Genet*. 2019;51:1380–1388. doi: 10.1038/s41588-019-0479-7
96. Machiela MJ, Chanock SJ. LDlink: a web-based application for exploring population-specific haplotype structure and linking correlated alleles of possible functional variants. *Bioinformatics*. 2015;31:3555–3557. doi: 10.1093/bioinformatics/btv402
97. Grant CE, Bailey TL, Noble WS. FIMO: scanning for occurrences of a given motif. *Bioinformatics*. 2011;27:1017–1018. doi: 10.1093/bioinformatics/btr064
98. Khan A, Fornes O, Stigliani A, Gheorghe M, Castro-Mondragon JA, van der Lee R, Bessy A, Chèneby J, Kulkarni SR, Tan G, et al. JASPAR 2018: update of the open-access database of transcription factor binding profiles and its web framework. *Nucleic Acids Res*. 2018;46:D260–D266. doi: 10.1093/nar/gkx1126
99. Aleström P, D'Angelo L, Midtlyng PJ, Schorderet DF, Schulte-Merker S, Sohm F, Warner S. Zebrafish: housing and husbandry recommendations. *Lab Anim*. 2020;54:213–224. doi: 10.1177/0023677219869037
100. Mosimann C, Puller AC, Lawson KL, Tschopp P, Amsterdam A, Zon LI. Site-directed zebrafish transgenesis into single landing sites with the phiC31 integrase system. *Dev Dyn*. 2013;242:949–963. doi: 10.1002/dvdy.23989
101. Moorman AF, Houweling AC, de Boer PA, Christoffels VM. Sensitive non-radioactive detection of mRNA in tissue sections: novel application of the whole-mount in situ hybridization protocol. *J Histochem Cytochem*. 2001;49:1–8. doi: 10.1177/002215540104900101
102. Ruijter JM, Ramakers C, Hoogaars WM, Karlen Y, Bakker O, van den Hoff MJ, Moorman AF. Amplification efficiency: linking baseline and bias in the analysis of quantitative PCR data. *Nucleic Acids Res*. 2009;37:e45. doi: 10.1093/nar/gkp045
103. Ruiz-Villalba A, Mattiotti A, Gunst QD, Cano-Ballesteros S, van den Hoff MJ, Ruijter JM. Reference genes for gene expression studies in the mouse heart. *Sci Rep*. 2017;7:24. doi: 10.1038/s41598-017-00043-9