



Universiteit  
Leiden  
The Netherlands

## Cellular cryo-tomography of nidovirus replication organelles

Wolff, G.

### Citation

Wolff, G. (2022, June 29). *Cellular cryo-tomography of nidovirus replication organelles*. Retrieved from <https://hdl.handle.net/1887/3421526>

Version: Publisher's Version

License: [Licence agreement concerning inclusion of doctoral thesis in the Institutional Repository of the University of Leiden](#)

Downloaded from: <https://hdl.handle.net/1887/3421526>

**Note:** To cite this publication please use the final published version (if applicable).

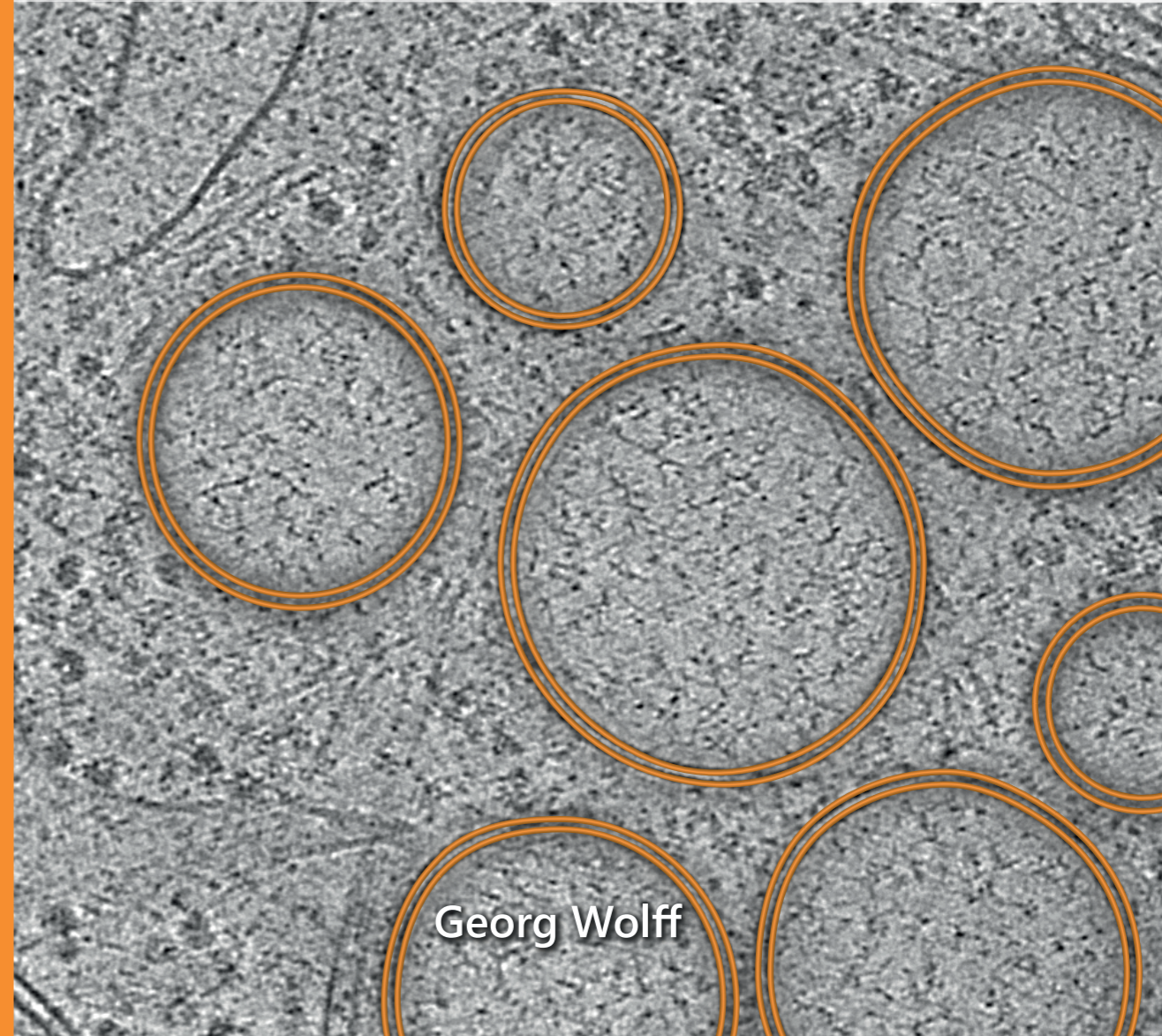


# Cellular cryo-tomography of nidovirus replication organelles



Cellular cryo-tomography of nidovirus replication organelles

Georg Wolff



Georg Wolff