



Universiteit
Leiden
The Netherlands

IGF2 is a potential factor in RAI-refractory differentiated thyroid cancer

Crezee, T.; Tesselaar, M.H.; Jaeger, M.; Rabold, K.; Corver, W.; Morreau, H.; ... ; Plantinga, T.S.

Citation

Crezee, T., Tesselaar, M. H., Jaeger, M., Rabold, K., Corver, W., Morreau, H., ... Plantinga, T. S. (2021). IGF2 is a potential factor in RAI-refractory differentiated thyroid cancer. *Oncology Letters*, 22(2). doi:10.3892/ol.2021.12851

Version: Publisher's Version

License: [Creative Commons CC BY-NC-ND 4.0 license](#)

Downloaded from: <https://hdl.handle.net/1887/3276818>

Note: To cite this publication please use the final published version (if applicable).

IGF2 is a potential factor in RAI-refractory differentiated thyroid cancer

THOMAS CREZEE^{1,2}, MARIKA H. TESSELAAR^{1,2}, MARTIN JAEGER^{2,3}, KATRIN RABOLD^{4,5},
WILLEM E. CORVER⁶, HANS MORREAU⁶, ADRIANA C.H. VAN ENGEN-VAN GRUNSVEN¹,
JAN W.A. SMIT⁴, ROMANA T. NETEA-MAIER³ and THEO S. PLANTINGA¹

¹Department of Pathology; ²Radboud Institute for Molecular Life Sciences; ³Department of Internal Medicine, Division of Endocrinology; ⁴Department of Internal Medicine; ⁵Radiotherapy and OncoImmunology Laboratory, Department of Radiation Oncology, Radboud University Medical Center, 6500 HB Nijmegen;
⁶Department of Pathology, Leiden University Medical Center, 2333 ZA Leiden, The Netherlands

Received February 5, 2021; Accepted April 12, 2021

DOI: 10.3892/ol.2021.12851

Abstract. Differentiated thyroid cancer (DTC) is the most frequent endocrine tumor with a good prognosis after primary treatment in most cases. By contrast, 30-40% of patients with metastatic DTC are unresponsive to ¹³¹I radioactive iodide (RAI) treatment due to tumor dedifferentiation. Currently, underlying molecular mechanisms of dedifferentiation remain elusive and predictive biomarkers are lacking. Therefore, the present study aimed to identify molecular biomarkers in primary tumors associated with RAI refractoriness. A retrospective cohort was gathered consisting of RAI-sensitive patients with DTC and RAI-refractory patients with poorly DTC. In all patients, extensive intratumoral mutation profiling, gene fusions analysis, telomerase reverse transcriptase (TERT) promoter mutation analysis and formalin-fixed paraffin-embedded-compatible RNA sequencing were performed. Genetic analyses revealed an increased mutational load in RAI-refractory DTC, including mutations in *AKT1*, *PTEN*, *TP53* and *TERT* promoter. Transcriptomic analyses revealed profound differential expression of insulin-like growth factor 2 (*IGF2*), with up to 100-fold higher expression in RAI-refractory DTC compared with in RAI-sensitive DTC cases. ELISA revealed significant lower IGF2 plasma concentrations after surgery and subsequent ¹³¹I RAI

therapy in patients with DTC compared with pretreatment baseline. Overall, the current findings suggested that the tumor-promoting growth factor IGF2 may have a potential role in acquiring RAI refractoriness.

Introduction

Differentiated thyroid cancer (DTC) is the most frequent endocrine tumor with in most cases a good prognosis. Standard of care consists of hemi-thyroidectomy or total thyroidectomy often followed by ¹³¹I radioactive iodide (RAI) ablation (1,2). Despite the increasing incidence of DTC, less than 10% of patients with clinical disease will develop distant metastases. From this group, 30-40% of patients with metastatic DTC are unresponsive to ¹³¹I radioactive iodide (RAI) treatment, have a 10-year survival rate less than 10% and a mean life expectancy of 3-5 years. RAI refractoriness could be the result of a tumor dedifferentiation process. (3,4). There are currently no curative treatment options for these RAI-refractory tumors emphasizing the need for novel therapeutic options and molecular biomarkers (5-8).

Several studies aimed to discover novel markers that predict RAI sensitivity. In this context, telomerase reverse transcriptase (*TERT*) promoter mutations have been proposed to assist identification of patients with poorly differentiated TC with high risk of RAI refractoriness (9). The same holds true for the assessment of sodium-iodide symporter expression in circulating tumor cells (10). Also, prostate-specific membrane antigen (*PSMA*) expression in tumor tissue has been suggested to contribute in the prediction of tumor aggressiveness and patient outcome (11). The most intensively studied marker is Thyroglobulin (Tg). Quantitative changes in Tg could reflect the response to RAI therapy or serve as diagnostic or prognostic tool (12-14). However, current methods, such as serum Tg or *PSMA* expression measurements serve mostly as a diagnostic, predictive or prognostic tool. Therefore, the identification of DTC patients at risk for RAI refractory disease is still an unmet medical need and additional markers need to be explored.

In the present study we aimed to identify molecular markers in primary tumors that are associated with RAI

Correspondence to: Mr. Thomas Crezee, Department of Pathology, Radboud University Medical Center, Geert Grooteplein Zuid 10, 6500 HB Nijmegen, The Netherlands
E-mail: thomas.creezee@radboudumc.nl

Abbreviations: ATC, anaplastic thyroid cancer; DTC, differentiated thyroid cancer; FFPE, formalin-fixed paraffin-embedded; IGF2, insulin-like growth factor 2; IGFBP2, insulin-like growth factor binding protein 2; PSMA, prostate-specific membrane antigen; RAI, radioactive iodide; TERT, telomerase reverse transcriptase; TG, thyroglobulin

Key words: DTC, RAI refractoriness, IGF2

refractory disease. A retrospective cohort of 63 DTC patients, including all histological subtypes, was collected for this study and consisted of 35 RAI-sensitive DTC patients and 28 RAI-refractory (poorly) differentiated TC patients. Extensive intratumoral mutation profiling, gene fusions analysis, *TERT* promoter mutation analysis and formalin-fixed paraffin embedded-compatible RNA sequencing was performed in all patients. To validate potential circulating markers, an independent cohort of 8 DTC patients was available.

Materials and methods

Patient cohorts. Detailed pathology reports were collected of all DTC patients diagnosed in Nijmegen and surrounding hospitals between 2000 and 2016 (1,544 patients). We selected 35 RAI-sensitive DTC patients, ages ranged from 15 to 77 years ($M=41.9\pm 18.9$), and 28 RAI-refractory DTC patients, ages ranged from 45 to 84 years ($M=61.9\pm 10.2$), that underwent total or near-total thyroidectomy and showed residual disease after primary surgery. The eighth edition of the American Joint Committee on Cancer (AJCC) staging system was used to determine the TNM stage of each individual patient (15). Patients with confirmed nodal metastases prior to primary surgery also underwent a modified radical lymph node dissection. RAI ablation of residual thyroid tissue was performed 4–6 weeks after surgery. All patients included in this study had residual disease after primary surgery as demonstrated by diagnostic RAI scintigraphy. If indicated, patients were repeatedly treated with RAI to reach remission. RAI sensitivity was defined as a complete response to RAI therapy of histologically differentiated tumor lesions resulting in remission after the primary treatment by surgery and RAI ablation or (if indicated) after subsequent treatments with RAI for metastases with documented ^{131}I uptake. Remission was defined as undetectable thyroid-stimulating hormone stimulated Tg in the absence of anti-Tg antibodies and no evidence of loco-regional disease or distant metastasis on the whole-body iodide scans (WBS) and/or neck ultrasonographic examinations at 6–9 months after the last RAI treatment. The remission status was confirmed at the last follow-up visit. According to the RECIST criteria, RAI refractoriness was defined as either new evidence of recurrent loco-regional disease or distant metastasis after successful primary therapy or progressive disease at least 6 months after primary treatment by surgery and RAI treatment preferably supported by presence of metastases that do not accumulate ^{131}I on the last post-therapy scan. Persistent disease was defined as detectable Tg and/or evidence of loco-regional disease or distant metastases. Of all selected DTC patients, archived formalin-fixed paraffin-embedded (FFPE) tissue specimens were collected for genetic, transcriptomic and protein analyses. Collection, storage and use of archival tissue and patient data were in compliance with the ‘Code of Proper Secondary Use of Human Tissue in the Netherlands’ (<http://www.fmwv.nl> and www.federa.org). This study was approved by the Research Ethics Committee [Commissie Mensgebonden Onderzoek (CMO)] of the Radboud University Medical Center under application 2015-1762 and followed the ethical guidelines of the CMO. The CMO waived the need for consent for the use of archive samples since the samples were analyzed anonymously.

An independent cohort including eight consecutive newly diagnosed patients with DTC (with and without metastases), ages ranged from 27 to 78 years ($M=54.6\pm 16.5$), that were therapy naïve and were planned to receive conventional primary treatment by surgery followed by RAI were included in which plasma insulin-like growth factor 2 (IGF2) concentrations were measured before surgery and 30 days after ^{131}I radioactive iodide therapy. This study was also approved by the Research Ethics Committee [Commissie Mensgebonden Onderzoek (CMO)] of the Radboud University Medical Center under application: 2017-3628; NL62671.091.17; ClinicalTrials.gov Identifier: NCT03397238. Informed consent was obtained from all participants and/or their legal guardians. Their results were compared to those of six gender and aged matched healthy volunteers.

DNA and RNA isolation from FFPE tissues. For DNA isolation, 60 μm FFPE tissue slices were digested overnight at 56°C in the presence of TET-lysis buffer (10 mM Tris/HCl pH 8.5, 1 mM EDTA pH 8.0, 0.01% Tween-20), 5% Chelex-100 (Bio-Rad Laboratories, Inc.), 15 $\mu\text{g}/\text{ml}$ GlycoBlue (Life Technologies) and 400 μg proteinase K (Qiagen), followed by inactivation at 95°C for 10 min. For DNA isolation, the supernatant was transferred after centrifugation (20817 rcf), cooled on ice and precipitated in the presence of 100% EtOH and 1/33 volume 3M NaAc (pH 5.2). Pellets were washed with cold 70% EtOH, dissolved in 80 μl Tris-EDTA and DNA concentrations were determined using the Qubit Broad Range kit (Thermo Fisher Scientific, Inc.). For RNA isolation, 60 μm FFPE tissue slices were digested overnight at 56°C in the presence of 240 μl lysis buffer (Qiagen) and 400 μg proteinase K. Next, supernatants were transferred after centrifugation (16,000 \times g) and mixed with RNA-Bee. Subsequently, RNA was isolated by phase separation with chloroform and precipitated by isopropanol, according to the manufacturer's instructions (Thermo Fisher Scientific, Inc.).

Intratumoral mutation profiling. Somatic mutations in human DTC tumor tissue were detected by our in-house Cancer Hotspot Panel based on single-molecule molecular inversion probes, as described previously (16). Isolated DNA from FFPE tissues with a tumor cell percentage of >60% was subjected to library preparation and clinically relevant regions were sequenced of the following genes: *AKT1*, *BIRC3*, *BRAF*, *CHEK2*, *CTNNB1*, *CXCR4*, *EGFR*, *ERBB2*, *EZH2*, *GNAI1*, *GNAQ*, *GNAS*, *H3F3A*, *H3F3B*, *HRAS*, *IDH1*, *IDH2*, *JAK2*, *KIT*, *KRAS*, *MPL*, *MSH2*, *MYD88*, *NRAS*, *PDGFRA*, *PIK3CA*, *SF3B1*, *SLC7A8* and *ZNF2*.

Gene fusion analysis. DNA/RNA was isolated from punched tumor tissue with a tumor cell percentage of >50%. Gene fusion analysis was performed by Next Generation Sequencing (Archer FusionPlex CTL Panel) and data were analyzed by Archer Analysis software (version 5). Relevant fusions of the following target genes were sequenced: *ALK* (5'; exons 2, 4, 6, 10, 16–23, intron 19), *AXL* (3'; exons 18–20), *BRAF* (5'; exons 7–11, 3'; exons 7, 8, 10), *CCND1* (5'; exons 1–4, 3'; exons 1, 2, 4), *FGFR1* (5'; exons 2, 8–10, 17, 3'; exon 17), *FGFR2* (5'; exons 2, 5, 7–10, 3'; exon 17), *FGFR3* (5'; exons 3, 5, 8–10, 3'; exon 17, intron 17), *MET* (5'; exons 2, 4–6, 13, 14, 16,

17, 21, 3'; exon 2), NRG1 (5'; exons 1, 2, 3, 6), NTRK1 (5'; exons 2, 4, 6, 8, 10-13), NTRK2 (5'; exons 5, 7, 9, 11-17), NTRK3 (5'; exons 4, 7, 10, 13-16), PPARG (5'; exons 1, 2, 3, 5), RAF1 (5'; exons 4-7, 9-12), RET (5'; exons 2, 4, 6, 8, 9-14), ROS1 (5'; exons 2, 4, 7, 31-37), THADA (3'; exons 24-30, 36, 37). In addition, the FusionPlex-CTL hotspot panel also detects mutations in BRAF (exon 11, 15), HRAS, NRAS (exon 2 and 3, codon 12, 13, 61), KRAS (exon 2, 3 and 4, codon 12, 13, 61 and 146) and the EGFRvIII variant.

TERT promoter mutation analysis. TERT promoter mutations C228A, C228T (at position-124 from translation start site) and C250T (-146 from translation start site) were detected by conventional PCR followed by Sanger sequencing. The TERT promoter region was amplified by the following M13-sequence extended primers: Forward 5'-TGT-AAA-ACG-ACG-GCC-AGT-CCC-TTC-ACC-TTC-CAG-CTC-3' and reverse 5'-CAG-GAA-ACA-GCT-ATG-ACC-AGC-GCT-GCC-TGA-AAC-TCG-3'. DNA was amplified by AmpliTaq PCR 360 Gold Master Mix (Thermo Fisher, Waltham, MA, USA) and the following PCR program: 95°C for 10 min followed by 95°C for 30 sec, 58°C for 30 sec and 72°C for 1 min (38 cycles) and a final step of 72°C for 7 min. Subsequently, Sanger sequencing was performed with M13 primers and TERT promoter mutations were called by Sanger chromatogram software (Sequencher 4.8, Gene Codes Corp.).

FFPE compatible RNA sequencing. Isolated RNA obtained from FFPE tissues with a tumor cell percentage of >80% was processed for RNA sequencing by DNase treatment, RNA demodification, RNA fragmentation (if necessary), first and second-strand cDNA synthesis and library preparation according to the Ovation SoLo RNA-Seq System (NuGEN). Subsequently, RNA sequencing was performed by Illumina NextSeq500 and analysis of the data was performed by the Centre for Molecular and Biomolecular Informatics (CMBI). STAR, a standard aligner that makes use of a reference genome (GRCh38), was selected for the alignment of the sequences. To quantify the alignments made in STAR the tool HTSeq was utilized. This produced 'counts.txt' files that are easy to import into DESeq2, a package to carry out differential gene expression analysis. Raw RNA sequencing data are deposited in the GEO database under accession number GSE112202.

Plasma measurements. Plasma IGF2 and IGF binding protein 2 (IGFBP2) concentrations were measured by ELISA according to manufacturer's instructions (R&D Systems, Inc.).

Statistical analysis. Statistical significance was tested with Student's t-test, Fisher's exact test, Mann Whitney U test, Wilcoxon matched-pairs signed rank test, when appropriate. P-values below 0.05 were considered statistically significant. For RNA sequencing data a false discovery rate of 0.05 was incorporated. All statistical tests were performed using GraphPad Prism 5.0.

Results

Primary tumors from RAI-refractory DTC patients harbor a significant higher IGF2 RNA expression compared to RAI-sensitive DTC patients. Patient and tumor characteristics

of 35 RAI-sensitive and 28 RAI-refractory DTC patients from the cohort are listed in Table I. RAI-refractory DTC patients were diagnosed at an older age and displayed a less favorable TNM staging at diagnosis than RAI-sensitive patients. This showed to be significant ($P < 0.001$) (Table I). To assess the mutational status in these DTC patients, intratumoral mutational profiling, gene fusion analysis and TERT promoter mutational analysis were performed. There was a significantly higher proportion of tumors bearing TERT promoter mutations in RAI-refractory DTC patients compared to RAI-sensitive patients (50% vs. 8.6%) (Table II). In contrast, more RAI-sensitive patients showed gene fusions compared to RAI-refractory patients. To gain insight into differentially expressed genes between tumors obtained from RAI-sensitive and RAI-refractory DTC patients, whole transcriptomics analysis was performed using RNA sequencing. Subsequently, a heatmap was constructed to visualize expression values (Fig. 1A) and differential expression analysis was determined within the overall comparison of RAI-sensitive and RAI-refractory DTC patients. IGF2 showed a significantly higher expression in RAI refractory DTC patients compared to RAI sensitive DTC patients. Fig. 1B displays the datapoints of each individual patient also separated for the different histological subgroups indicating that the higher RNA expression of IGF2 in RAI refractory patients is independent of the tumor histology.

DTC patients show significantly lower circulating levels of IGF2 concentration after primary treatment. To further support the role of IGF2 in the pathogenesis of DTC we investigated the IGF2 plasma concentration before and after treatment in an independent cohort, including eight newly diagnosed therapy-naïve patients with DTC (4 males and 4 females, averaged 54.6 ± 16.5 years) scheduled for conventional treatment by surgery followed by RAI. Patients and tumor characteristics of this cohort are listed in Table III. The IGF2 plasma concentrations in these patients were compared to those of six age- and gender-matched healthy volunteers (3 males and 3 females, averaged 51.7 ± 12.4 years). The average total IGF2 concentration before surgery (baseline) in DTC patients showed higher ($1.17 \times 10^6 \pm 2.6 \times 10^5$ pg/ml) compared to healthy volunteers ($9.5 \times 10^5 \pm 1.7 \times 10^5$ pg/ml) although this difference did not reach statistical significance (Fig. 2A). Thirty days after primary surgery the average IGF2 plasma concentration was significantly decreased ($8.3 \times 10^5 \pm 1.7 \times 10^5$ pg/ml) compared to the level before surgery (Fig. 2B). To exclude interference between IGFBP2 and its ligand IGF2 effecting the assay, we assessed the plasma IGFBP2 concentrations in the same samples. The IGFBP2 concentrations after therapy were not significantly different from those measured before surgery, which suggests an even stronger effect of treatment on the free IGF2 circulating concentrations (Fig. 2C).

Discussion

Obliterating tumor remnants after thyroidectomy by RAI therapy is of significant clinical importance in DTC. Unresponsiveness to RAI is a major concern since RAI-refractory tumors usually respond poorly to alternative therapies. Apart from a lack of therapeutic options,

Table I. Clinical characteristics of RAI-sensitive (n=35) and RAI-refractory (n=28) patients with DTC.

Parameter	RAI-sensitive DTC	RAI-refractory DTC	P-value
Mean age at diagnosis \pm SD, years	41.9 \pm 18.9	61.9 \pm 10.2	<0.001
Sex, male/female, n	13/22	16/12	0.134
Histology, n			0.0045
PTC	29	11	
FTC	4	10	
HCC	1	5	
FVPTC	1	2	
T-stage ^a , n			0.0011
T1	12	3	
T2	12	4	
T3	8	7	
T4	3	14	
N-stage ^a , n			NA
N0	0	0	
N1	35	28	
M-stage ^a , n			<0.0001
M0	31	4	
M1	4	24	
Location of metastases, n			<0.0001
No metastases	31	4	
Lung	3	16	
Bone	0	2	
Lung and bone	1	5	
Lung, liver and muscle	0	1	
Number of RAI treatments, n			0.0032
0-1	22	6	
2	9	12	
>2	4	10	
Mean cumulative RAI dose \pm SD, MBq	9,806 \pm 7,127	17,240 \pm 8,955	<0.001

^aBased on AJCC 8th edition of TNM classification. Data analyzed by Student's t-test or Fisher's exact test. AJCC, American Joint Committee on Cancer; DTC, differentiated thyroid cancer; FTC, follicular thyroid cancer; FVPTC, follicular-variant papillary thyroid cancer; HCC, Hürthle cell carcinoma; PTC, papillary thyroid cancer; RAI, radioactive iodide; NA, not applicable.

markers predicting RAI refractoriness have so far not been identified. Therefore, we searched for differences between the molecular signatures obtained from primary RAI sensitive and RAI refractory DTC samples. Genetic analyses revealed an increased mutational load in RAI-refractory DTC, including mutations in *AKT1*, *PTEN*, *TP53* and *TERT* promoter. Mutations or deletions of the tumor suppressor gene *PTEN* are genetic alterations that can activate the PI3K-Akt pathway (1). Other genetic alterations activating the PI3K-Akt pathway in DTC tumors, particularly in those having a poor prognosis, include mutations encoding for *PI3KCA*, *AKT1* and *RAS* genes. As genetic alterations accumulate, additional mutations occur in genes such as *TP53*. Additional mutations, together with the initial genetic alterations in the MAPK or PI3K-Akt pathway contributes to tumor progression and could ultimately lead to the development of PDTC or anaplastic thyroid cancer (ATC) (1,17). Previous studies have also shown

that somatic *TERT* promoter mutations are more prevalent in aggressive types of TC such as PDTC and ATC (18,19). Our observations, demonstrating a higher proportion of tumors bearing *TERT* promoter mutations in RAI-refractory DTC patients, are in concordance with these studies. Interestingly, transcriptome data from RAI refractory DTC patients and RAI sensitive DTC patients revealed a significantly higher RNA expression of *IGF2* in primary tumors of RAI refractory DTC patients. Moreover, we show that the *IGF2* plasma concentration in patients with DTC significantly decreased after primary treatment by surgery and RAI. Our data suggest no clear relationship between the increased mutational load and the overexpression of *IGF2* in RAI-refractory DTC patients. However, due to the relatively small sample size our study probably lacked the statistical power to robustly assess this association. Therefore, the relationship between the increased mutational load and overexpression of *IGF2* should

Table II. Genetic characteristics of RAI-sensitive (n=35) and RAI-refractory (n=28) patients with DTC.

Parameter	RAI-sensitive DTC, n	RAI-refractory DTC, n	P-value
Oncogenic mutation status			0.442
BRAF V600E	15	9	
H/K/NRAS, G12D/Q61R	4	5	
Other	CCDC6:RET fusion (n=4), CCDC6:RET fusion and PIK3CA H1047R (n=1), SQSTM1:NTRK3 fusion (n=1), ETV6:NTRK3 fusion (n=1), NCOA4:RET fusion (n=1), PAX8:PPARG fusion (n=2)	PTEN E242X and TP53 R158G (n=1), PTEN E242X and TP53 P212fs (n=1), NRAS Q61R and AKT1 E17L (n=1), EML4:NTRK3 fusion (n=1)	
Unknown	6	10	
TERT promoter mutation status			0.0004
TERT wild-type	32	14	
TERT C228T	3	14	

Data analyzed by Fisher's exact test. DTC, differentiated thyroid cancer; RAI, radioactive iodide; TERT, telomerase reverse transcriptase.

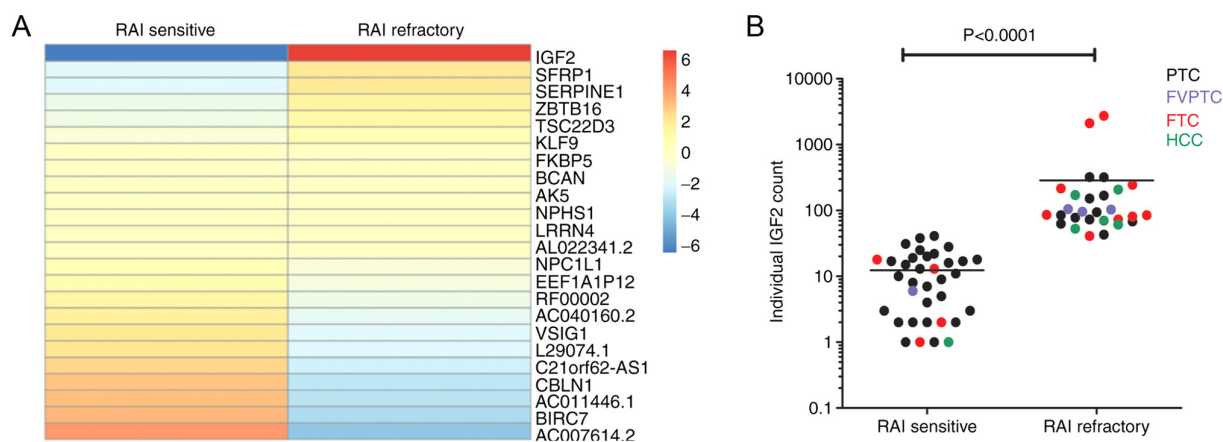


Figure 1. RNA expression profiling in DTC tissues. (A) Heatmap of differentially expressed genes in tumor tissues of RAI-sensitive (n=35) and RAI-refractory (n=28) patients with DTC. (B) Individual IGF2 RNA expression in patients with DTC separated by histology. Data analyzed by Mann-Whitney U test. FTC, follicular thyroid cancer; FVPTC, follicular-variant papillary thyroid cancer; HCC, Hürthle cell carcinoma; PTC, papillary thyroid cancer; RAI, radioactive iodide; DTC, differentiated thyroid carcinoma.

be investigated in future studies including larger cohorts of patients.

The *IGF2* gene is located on chromosome 11p15.5 and encodes for the IGF2 growth factor that has been shown to play an important role in the fetal embryonic development, growth and energy metabolism of mammals (20-24). Apart from this, IGF2 has also been reported to be involved in carcinogenesis. In several cancer types, increased expression of IGF2 has been linked to poor prognosis (25). In lung cancer patients, increased IGF2 protein expression in pleural effusion supernatants was associated with resistance to osimertinib treatment (26). Elevated levels of *IGF2* mRNA in osteosarcoma cells were shown after chemotherapy resulting in preservation of these cells under chemotherapeutic stress (27). In a study investigating 445 gastrointestinal tumors, high protein expression of IGF2 in the tumor tissue was associated with a significant worse outcome (28). In colorectal

cancer, overexpression of stromal-derived IGF2 has been shown to play a role in development and progression, whereas increased serum concentrations and tissue overexpression of IGF2 has been associated with metastasis (29-31). Moreover, in breast cancer tissues, IGF2 was found to be more potent than in normal breast tissue for activating insulin receptor (IR) autophosphorylation causing stimulation of cell growth (32). Finally, a study performed by Tominaga *et al* described a positive feedback loop, IGF2-IGF1R-PI3K-ID1-IGF2, present in cancer stem-like cells causing cells to maintain in the stem cell state (33).

A few other studies suggest a role for IGF2 in the pathogenesis of DTC. Differences in *IGF2* mRNA expression between normal thyroid epithelial cells, thyroid adenoma and thyroid carcinoma were demonstrated using three pairwise comparisons with the GEO2R online tool (34). One research group published several studies in which they

Table III. Clinical characteristics of patients with differentiated thyroid cancer from the independent cohort.

Patient no.	Age at inclusion, years	Sex	Histology	TNM stage at diagnosis	RAI dose, mCi
1	42	F	PTC	T1bN1M0	100
2	55	M	HCC	T2mN0M1	200
3	49	M	PTC	T1bmN1aM0	100
4	65	M	PTC	T2N1bM0	200
5	78	M	HCC	T4aN1bM0	200
6	50	F	PTC	T2mN1bMx	100
7	27	F	PTC	T3N1bM0	200
8	71	F	PTC	T1mN0M0	30

F, female; M, male; HCC, Hürthle cell carcinoma; PTC, papillary thyroid cancer; RAI, radioactive iodide.

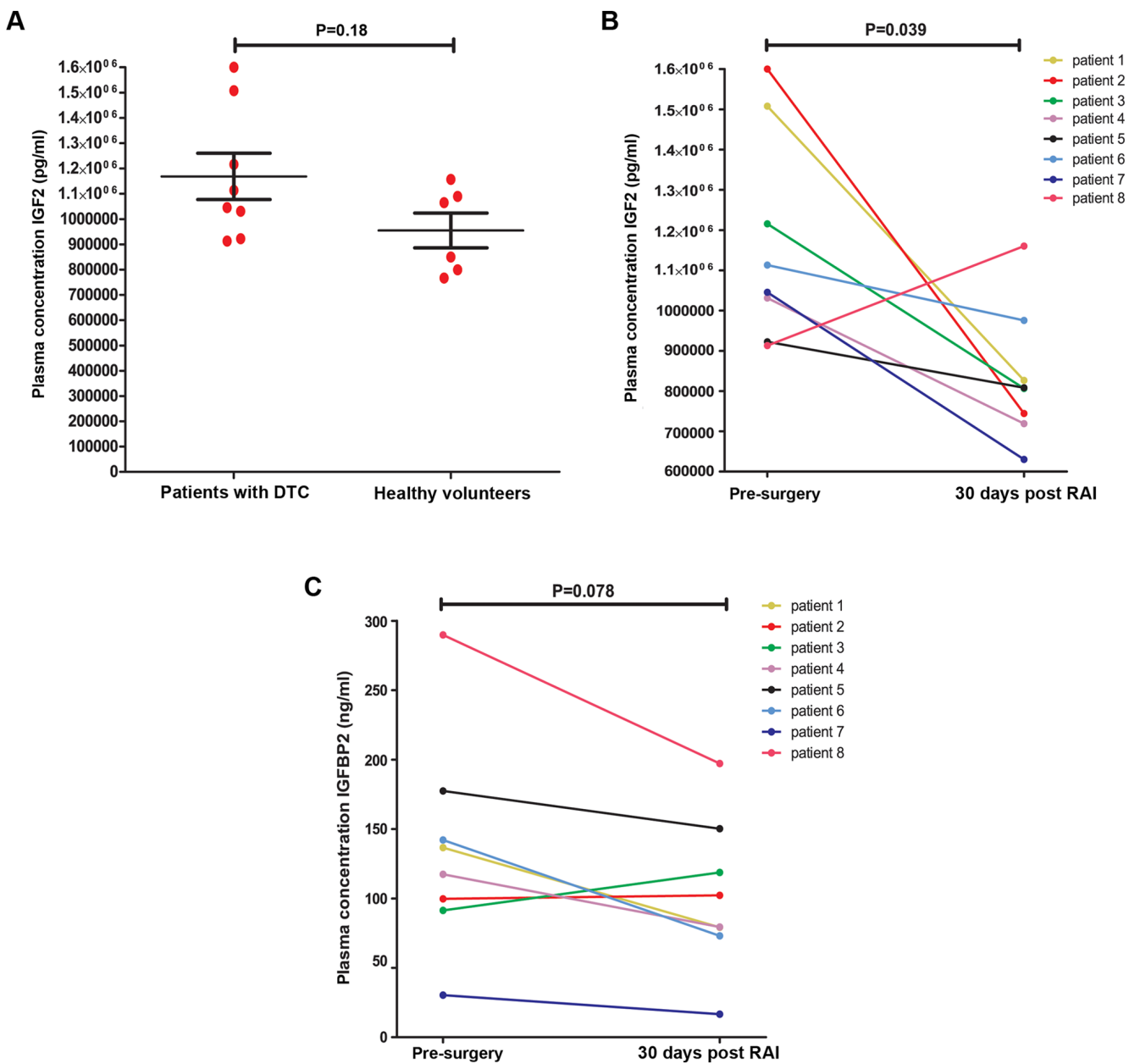


Figure 2. Decreased plasma IGF2 concentrations 30 days after RAI treatment. (A) Blood plasma IGF2 concentrations in 8 patients with DTC pre-surgery compared with plasma IGF2 levels in 6 healthy volunteers. Data analyzed by Mann-Whitney U test. Blood plasma (B) IGF2 and (C) IGFBP2 concentrations in patients with DTC pre-surgery and 30 days after RAI treatment. Data analyzed by Wilcoxon matched-pairs signed rank test. DTC, differentiated thyroid cancer; RAI, radioactive iodide; IGF2, insulin-like growth factor 2; IGFBP2, insulin-like growth factor binding protein 2.

demonstrate the overexpression of *IGF2* mRNA in undifferentiated thyroid cancer cell lines, poorly differentiated malignant thyrocytes, cancer thyrospheres and thyroid cancer specimens. This overexpression of *IGF2* coincided with elevated expression of insulin receptor isoform A (IR-A) and insulin-like growth factor 1 receptor (IGF1R). They showed that this so-called *IGF2*/IR-A autocrine loop is associated with dedifferentiation and stem-like phenotypes, resembling RAI refractoriness (35-38). In line with these findings, we identified higher *IGF2* expression in primary tumors from RAI refractory DTC patients via RNA sequencing. For the first time, our study also demonstrates a significant decrease of total *IGF2* plasma concentration 30 days after primary therapy as compared to before surgery. Collectively these data suggest that *IGF2* expression could have prognostic and therapeutic implications for several cancer types including DTC, which strengthens the importance of our findings and a potential role for *IGF2* in acquiring RAI refractoriness.

The mechanism behind the increase in *IGF2* expression in RAI refractory tumors demonstrated in this study is unknown. Previous studies have proposed several mechanisms to explain this increased expression causing therapy resistance. Wang *et al* showed that *IGF2* produced by cancer-associated fibroblasts (CAFs) induced autophagy in cancer cells post-radiation thereby promoting cancer cell recovery (39). Also, drug resistance in non-small cell lung cancer cells was observed, inflicted by *IGF2*-AKT-Sox2-ABC1 signaling in cancer cells co-cultured with CAFs (40). The survival of osteosarcoma cells, supported by *IGF2*, was dependent on enhanced autophagic flux and glutamine availability (27). In malignant rhabdoid tumors *IGF2* has been shown to activate IGF1R and IR followed by activation of the PI3K-AKT and RAS-ERK pathways to promote proliferation and cell survival (41).

The present findings have potential clinical and therapeutic consequences. Several studies have been performed where *IGF2* has been proposed as a predictive or prognostic molecular marker (42-44). A limitation to the use of *IGF2* as a molecular marker for RAI refractoriness or for a more aggressive tumor behavior could be the presence of an autocrine IGF signaling loop as described by Vella and Malaguarnera (35-38). Measurement of serum *IGF2* does not account for local *IGF2* production in the tumors depending on an autocrine *IGF2* signaling loop. Alternatively, measuring tumor *IGF2* expression in the tissue available after thyroidectomy as we have shown in the study could be an potential option to be further explored (21).

Apart from serving as a molecular marker for RAI refractoriness, *IGF2* could perhaps also be targeted therapeutically to overcome RAI refractoriness. Detecting increased circulating levels of *IGF2* could be followed by targeting *IGF2* or its receptors by using IGF monoclonal antibodies, IGF1R monoclonal antibodies or IGF1R/IR tyrosine kinase inhibitors. Multiple phase I/II trials in all types of cancers have been initiated using these therapeutic options, also in combination with chemotherapeutics and other drugs (21,45). Studies have shown that targeting the IGF1R combined with the IR pathway may increase therapy efficacy and prevents resistance to selective IGF1R antibodies or inhibitors (46,47). OSI-906, a dual inhibitor of the IGF1R and IR, has already shown antitumor activity in a phase I study and phase II studies in combination with other drugs are ongoing (48,49). In the case

of DTC using such inhibitors could perhaps be beneficial in combination with RAI to overcome RAI refractoriness.

A few limitations of this study should be discussed. The retrospective design of our study and the criteria used for patient selection and RAI therapy indication possibly biased our results. Moreover, as mentioned earlier, the prevalence of distant metastasized DTC is <10%. Therefore, future studies will require larger sample sizes in addition to confirm our findings from both the retrospective cohort as well as the independent cohort. Furthermore, RNA-seq data from poorly differentiated TC cell lines such as FTC133, TPC-1 and BC-PAP showed in our hands a very low *IGF2* expression in these cells. Since these cell lines are already RAI-refractory, overexpression or knockdown of *IGF2* in these cell lines would not answer the questions regarding the potential role of *IGF2* in acquiring RAI refractoriness.

In conclusion, important clinical, genetic and transcriptomic differences were identified between patients with RAI-sensitive DTC and RAI-refractory DTC. Interestingly, the tumor-promoting growth factor *IGF2* showed a significantly higher expression in RAI refractory tumors. Plasma levels of *IGF2* decreased following primary treatment in patients with DTC. These findings suggest that tumor-promoting growth factor *IGF2* could be a potential factor in acquiring RAI refractoriness. Further studies in independent cohorts are needed to validate our findings and elaborate on the mechanism behind the elevated *IGF2* expression and RAI refractory in DTC patients and to explore *IGF2* as a potential therapeutic target.

Acknowledgements

Not applicable.

Funding

TP was supported by a Veni grant of the Netherlands Organization for Scientific Research (NWO; grant no. 016.136.065) and by the Alpe d'HuZes fund of the Dutch Cancer Society (grant no. KUN2014-6728).

Availability of data and materials

The raw RNA datasets generated and/or analyzed during the current study are available in the Gene Expression Omnibus database under accession no. GSE112202 (<https://www.ncbi.nlm.nih.gov/geo/query/acc.cgi?acc=GSE112202>).

Authors' contributions

TC, MHT, MJ and TSP performed the experiments and the data analysis. WEC and HM performed the gene-fusion experiments and analysis. KR recruited the patients, kindly provided the samples and clinical data for the independent cohort, and analysed the data of the independent cohort. ACHvEvG performed the pathological examinations of the tumour samples. TC, JWAS, RTNM and TPS designed the study. TC, JWAS, RTNM and TSP wrote the manuscript. TC and TSP confirm the authenticity of all the raw data. All authors have read and approved the final manuscript.

Ethics approval and consent to participate

Collection, storage and use of archived tissue and patient data were in compliance with the ‘Code of Proper Secondary Use of Human Tissue in the Netherlands’ (<http://www.fmwv.nl> and www.federa.org). The present study was approved by the Research Ethics Committee (CMO) of the Radboud University Medical Center under application no. 2015-1762 and followed the ethical guidelines of the CMO. The CMO waived the need for consent for the use of archived samples since the samples were analyzed anonymously. The independent cohort was approved by the CMO of the Radboud University Medical Center under application no. 2017-3628 (approval no. NL62671.091.17; ClinicalTrials.gov Identifier: NCT03397238). Written informed consent was obtained from all participants and/or their legal guardians.

Patient consent for publication

Not applicable.

Competing interests

The authors declare that they have no competing interests.

References

- Xing M: Molecular pathogenesis and mechanisms of thyroid cancer. *Nat Rev Cancer* 13: 184-199, 2013.
- Fagin JA and Wells SA Jr: Biologic and clinical perspectives on thyroid cancer. *N Engl J Med* 375: 1054-1067, 2016.
- Durante C, Haddy N, Baudin E, Leboulleux S, Hartl D, Travagli JP, Caillou B, Ricard M, Lumbroso JD, De Vathaire F and Schlumberger M: Long-term outcome of 444 patients with distant metastases from papillary and follicular thyroid carcinoma: Benefits and limits of radioiodine therapy. *J Clin Endocrinol Metab* 91: 2892-2899, 2006.
- Song HJ, Qiu ZL, Shen CT, Wei WJ and Luo QY: Pulmonary metastases in differentiated thyroid cancer: Efficacy of radioiodine therapy and prognostic factors. *Eur J Endocrinol* 173: 399-408, 2015.
- Brose MS, Nutting CM, Jarzab B, Elisei R, Siena S, Bastholt L, de la Fouchardiere C, Pacini F, Paschke R, Shong YK, *et al*: Sorafenib in radioactive iodine-refractory, locally advanced or metastatic differentiated thyroid cancer: A randomised, double-blind, phase 3 trial. *Lancet* 384: 319-328, 2014.
- Pacini F, Castagna MG, Brillì L and Pentheroudakis G; ESMO Guidelines Working Group: Thyroid cancer: ESMO clinical practice guidelines for diagnosis, treatment and follow-up. *Ann Oncol* 23 (Suppl 7): vii110-vii119, 2012.
- Romesser PB, Sherman EJ, Shaha AR, Lian M, Wong RJ, Sabra M, Rao SS, Fagin JA, Tuttle RM and Lee NY: External beam radiotherapy with or without concurrent chemotherapy in advanced or recurrent non-anaplastic non-medullary thyroid cancer. *J Surg Oncol* 110: 375-382, 2014.
- Schlumberger M, Tahara M, Wirth LJ, Robinson B, Brose MS, Elisei R, Habra MA, Newbold K, Shah MH, Hoff AO, *et al*: Lenvatinib versus placebo in radioactive iodine-refractory thyroid cancer. *N Engl J Med* 372: 621-630, 2015.
- de la Fouchardière C, Decaussin-Petrucci M, Berthiller J, Descotes F, Lopez J, Lifante JC, Peix JL, Giraudet AL, Delahaye A, Masson S, *et al*: Predictive factors of outcome in poorly differentiated thyroid carcinomas. *Eur J Cancer* 92: 40-47, 2018.
- Zheng L, Wang G, Guo W, Pan D, Xie L, He S, Luo C, Li H, Ran Y, Wu S, *et al*: NIS and epithelial-mesenchymal transition marker expression of circulating tumor cells for predicting and monitoring the radioactive iodine-131 therapy effect in differentiated thyroid cancers. *Mol Biol Rep* 46: 4201-4212, 2019.
- Sollini M, di Tommaso L, Kirienko M, Piombo C, Erreni M, Lania AG, Erba PA, Antunovic L and Chiti A: PSMA expression level predicts differentiated thyroid cancer aggressiveness and patient outcome. *EJNMMI Res* 9: 93, 2019.
- Song E, Kim M, Kim EY, Kim BH, Shin DY, Kang HC, Ahn BC, Kim WB, Shong YK, Jeon MJ and Lim DJ: Lenvatinib for radioactive iodine-refractory differentiated thyroid carcinoma and candidate biomarkers associated with survival: A multicenter study in Korea. *Thyroid* 30: 732-738, 2020.
- Wang C, Zhang X, Li H, Li X and Lin Y: Quantitative thyroglobulin response to radioactive iodine treatment in predicting radioactive iodine-refractory thyroid cancer with pulmonary metastasis. *PLoS One* 12: e0179664, 2017.
- Giovanella L, Castellana M and Trimboli P: Unstimulated high-sensitive thyroglobulin is a powerful prognostic predictor in patients with thyroid cancer. *Clin Chem Lab Med* 58: 130-137, 2019.
- Tuttle RM, Haugen B and Perrier ND: Updated American joint committee on cancer/tumor-node-metastasis staging system for differentiated and anaplastic thyroid cancer (eighth edition): What changed and why? *Thyroid* 27: 751-756, 2017.
- Eijkelenboom A, Kamping EJ, Kastner-van Raaij AW, Hendriks-Cornelissen SJ, Neveling K, Kuiper RP, Hoischen A, Nelen MR, Ligtenberg MJ and Tops BB: Reliable next-generation sequencing of formalin-fixed, paraffin-embedded tissue using single molecule tags. *J Mol Diagn* 18: 851-863, 2016.
- Cancer Genome Atlas Research Network: Integrated genomic characterization of papillary thyroid carcinoma. *Cell* 159: 676-690, 2014.
- Jin L, Chen E, Dong S, Cai Y, Zhang X, Zhou Y, Zeng R, Yang F, Pan C, Liu Y, *et al*: BRAF and TERT promoter mutations in the aggressiveness of papillary thyroid carcinoma: A study of 653 patients. *Oncotarget* 7: 18346-18355, 2016.
- Xing M, Liu R, Liu X, Murugan AK, Zhu G, Zeiger MA, Pai S and Bishop J: BRAF V600E and TERT promoter mutations cooperatively identify the most aggressive papillary thyroid cancer with highest recurrence. *J Clin Oncol* 32: 2718-2726, 2014.
- Baral K and Rotwein P: The insulin-like growth factor 2 gene in mammals: Organizational complexity within a conserved locus. *PLoS One* 14: e0219155, 2019.
- Bowers LW, Rossi EL, O’Flanagan CH, deGraffenried LA and Hursting SD: The role of the insulin/IGF system in cancer: Lessons learned from clinical trials and the energy balance-cancer link. *Front Endocrinol (Lausanne)* 6: 77, 2015.
- Brouwer-Visser J and Huang GS: IGF2 signaling and regulation in cancer. *Cytokine Growth Factor Rev* 26: 371-377, 2015.
- Djiogbe S, Nwabo Kamdje AH, Vecchio L, Kipanyula MJ, Farahna M, Aldebasi Y and Seke Etet PF: Insulin resistance and cancer: The role of insulin and IGFs. *Endocr Relat Cancer* 20: R1-R17, 2013.
- Frasca F, Pandini G, Scalia P, Sciacca L, Mineo R, Costantino A, Goldfine ID, Belfiore A and Vigneri R: Insulin receptor isoform A, a newly recognized, high-affinity insulin-like growth factor II receptor in fetal and cancer cells. *Mol Cell Biol* 19: 3278-3288, 1999.
- Livingstone C: IGF2 and cancer. *Endocr Relat Cancer* 20: R321-R339, 2013.
- Manabe T, Yasuda H, Terai H, Kagiwada H, Hamamoto J, Ebisudani T, Kobayashi K, Masuzawa K, Ikemura S, Kawada I, *et al*: IGF2 autocrine-mediated IGF1R activation is a clinically relevant mechanism of osimertinib resistance in lung cancer. *Mol Cancer Res* 18: 549-559, 2020.
- Shimizu T, Sugihara E, Yamaguchi-Iwai S, Tamaki S, Koyama Y, Kamel W, Ueki A, Ishikawa T, Chiyoda T, Osuka S, *et al*: IGF2 preserves osteosarcoma cell survival by creating an autophagic state of dormancy that protects cells against chemotherapeutic stress. *Cancer Res* 74: 6531-6541, 2014.
- Steigen SE, Schaeffer DF, West RB and Nielsen TO: Expression of insulin-like growth factor 2 in mesenchymal neoplasms. *Mod Pathol* 22: 914-921, 2009.
- Kasprzak A and Adamek A: Insulin-like growth factor 2 (IGF2) signaling in colorectal cancer: from basic research to potential clinical applications. *Int J Mol Sci* 20: 4915, 2019.
- Sanderson MP, Hofmann MH, Garin-Chesa P, Schweifer N, Wernitznig A, Fischer S, Jeschko A, Meyer R, Moll J, Pecina T, *et al*: The IGF1R/INSR inhibitor BI 885578 selectively inhibits growth of IGF2-overexpressing colorectal cancer tumors and potentiates the efficacy of anti-VEGF therapy. *Mol Cancer Ther* 16: 2223-2233, 2017.
- Unger C, Kramer N, Unterleuthner D, Scherzer M, Burian A, Rudisch A, Stadler M, Schleder M, Lenhardt D, Riedl A, *et al*: Stromal-derived IGF2 promotes colon cancer progression via paracrine and autocrine mechanisms. *Oncogene* 36: 5341-5355, 2017.

32. Sciacca L, Costantino A, Pandini G, Mineo R, Frasca F, Scalia P, Sbraccia P, Goldfine ID, Vigneri R and Belfiore A: Insulin receptor activation by IGF-II in breast cancers: Evidence for a new autocrine/paracrine mechanism. *Oncogene* 18: 2471-2479, 1999.
33. Tominaga K, Shimamura T, Kimura N, Murayama T, Matsubara D, Kanauchi H, Niida A, Shimizu S, Nishioka K, Tsuji EI, *et al*: Addiction to the IGF2-ID1-IGF2 circuit for maintenance of the breast cancer stem-like cells. *Oncogene* 36: 1276-1286, 2017.
34. Wang Q, Shen Y, Ye B, Hu H, Fan C, Wang T, Zheng Y, Lv J, Ma Y and Xiang M: Gene expression differences between thyroid carcinoma, thyroid adenoma and normal thyroid tissue. *Oncol Rep* 40: 3359-3369, 2018.
35. Malaguarnera R, Frasca F, Garozzo A, Giani F, Pandini G, Vella V, Vigneri R and Belfiore A: Insulin receptor isoforms and insulin-like growth factor receptor in human follicular cell precursors from papillary thyroid cancer and normal thyroid. *J Clin Endocrinol Metab* 96: 766-774, 2011.
36. Vella V and Malaguarnera R: The emerging role of insulin receptor isoforms in thyroid cancer: Clinical implications and new perspectives. *Int J Mol Sci* 19: 3814, 2018.
37. Vella V, Nicolosi ML, Cantafio P, Massimino M, Lappano R, Vigneri P, Ciuni R, Gangemi P, Morrione A, Malaguarnera R and Belfiore A: DDR1 regulates thyroid cancer cell differentiation via IGF-2/IR-A autocrine signaling loop. *Endocr Relat Cancer* 26: 197-214, 2019.
38. Vella V, Pandini G, Sciacca L, Mineo R, Vigneri R, Pezzino V and Belfiore A: A novel autocrine loop involving IGF-II and the insulin receptor isoform-A stimulates growth of thyroid cancer. *J Clin Endocrinol Metab* 87: 245-254, 2002.
39. Wang Y, Gan G, Wang B, Wu J, Cao Y, Zhu D, Xu Y, Wang X, Han H, Li X, *et al*: Cancer-associated fibroblasts promote irradiated cancer cell recovery through autophagy. *EBioMedicine* 17: 45-56, 2017.
40. Zhang Q, Yang J, Bai J and Ren J: Reverse of non-small cell lung cancer drug resistance induced by cancer-associated fibroblasts via a paracrine pathway. *Cancer Sci* 109: 944-955, 2018.
41. Li T, Wang J, Liu P, Chi J, Yan H, Lei L, Li Z, Yang B and Wang X: Insulin-like growth factor 2 axis supports the serum-independent growth of malignant rhabdoid tumor and is activated by microenvironment stress. *Oncotarget* 8: 47269-47283, 2017.
42. El Tayebi HM, Salah W, El Sayed IH, Salam EM, Zekri AR, Zayed N, Salem ES, Esmat G and Abdelaziz AI: Expression of insulin-like growth factor-II, matrix metalloproteinases, and their tissue inhibitors as predictive markers in the peripheral blood of HCC patients. *Biomarkers* 16: 346-354, 2011.
43. Peters G, Gongoll S, Langner C, Mengel M, Piso P, Klempnauer J, Rüschoff J, Kreipe H and von Wasielewski R: IGF-1R, IGF-1 and IGF-2 expression as potential prognostic and predictive markers in colorectal-cancer. *Virchows Arch* 443: 139-145, 2003.
44. Van Arsdale AR, Arend RC, Cossio MJ, Erickson BK, Wang Y, Doo DW, Leath CA, Goldberg GL and Huang GS: Insulin-like growth factor 2: A poor prognostic biomarker linked to racial disparity in women with uterine carcinosarcoma. *Cancer Med* 7: 616-625, 2018.
45. Ewing GP and Goff LW: The insulin-like growth factor signaling pathway as a target for treatment of colorectal carcinoma. *Clin Colorectal Cancer* 9: 219-223, 2010.
46. Buck E, Gokhale PC, Koujak S, Brown E, Eyzaguirre A, Tao N, Rosenfeld-Franklin M, Lerner L, Chiu MI, Wild R, *et al*: Compensatory insulin receptor (IR) activation on inhibition of insulin-like growth factor-1 receptor (IGF-1R): Rationale for cotargeting IGF-1R and IR in cancer. *Mol Cancer Ther* 9: 2652-2664, 2010.
47. Malaguarnera R and Belfiore A: The insulin receptor: A new target for cancer therapy. *Front Endocrinol (Lausanne)* 2: 93, 2011.
48. Mulvihill MJ, Cooke A, Rosenfeld-Franklin M, Buck E, Foreman K, Landfair D, O'Connor M, Pirritt C, Sun Y, Yao Y, *et al*: Discovery of OSI-906: A selective and orally efficacious dual inhibitor of the IGF-1 receptor and insulin receptor. *Future Med Chem* 1: 1153-1171, 2009.
49. Puzanov I, Lindsay CR, Goff L, Sosman J, Gilbert J, Berlin J, Poondru S, Simantov R, Gedrich R, Stephens A, *et al*: A phase I study of continuous oral dosing of OSI-906, a dual inhibitor of insulin-like growth factor-1 and insulin receptors, in patients with advanced solid tumors. *Clin Cancer Res* 21: 701-711, 2015.



This work is licensed under a Creative Commons Attribution-NonCommercial-NoDerivatives 4.0 International (CC BY-NC-ND 4.0) License.