



**Universiteit
Leiden**
The Netherlands

Sugar-sweetened beverage consumption may modify associations between genetic variants in the CHREBP (carbohydrate responsive element binding protein) locus and HDL-C (high-density lipoprotein cholesterol) and triglyceride concentrations

Haslam, D.E.; Peloso, G.M.; Guirette, M.; Imamura, F.; Bartz, T.M.; Pitsillides, A.N.; ... ; McKeown, N.M.

Citation

Haslam, D. E., Peloso, G. M., Guirette, M., Imamura, F., Bartz, T. M., Pitsillides, A. N., ... McKeown, N. M. (2021). Sugar-sweetened beverage consumption may modify associations between genetic variants in the CHREBP (carbohydrate responsive element binding protein) locus and HDL-C (high-density lipoprotein cholesterol) and triglyceride concentrations. *Circulation: Genomic And Precision Medicine*, 14(4), 506-516. doi:10.1161/CIRCGEN.120.003288

Version: Publisher's Version
License: [Creative Commons CC BY-NC-ND 4.0 license](https://creativecommons.org/licenses/by-nc-nd/4.0/)
Downloaded from: <https://hdl.handle.net/1887/3254723>

Note: To cite this publication please use the final published version (if applicable).



Sugar-Sweetened Beverage Consumption May Modify Associations Between Genetic Variants in the CHREBP (Carbohydrate Responsive Element Binding Protein) Locus and HDL-C (High-Density Lipoprotein Cholesterol) and Triglyceride Concentrations

Danielle E. Haslam¹, PhD; Gina M. Peloso², PhD; Melanie Guirette³, MS; Fumiaki Imamura⁴, PhD; Traci M. Bartz, MS; Achilleas N. Pitsillides⁵, PhD; Carol A. Wang⁶, PhD; Ruifang Li-Gao⁷, PhD; Jason M. Westra⁸, MS; Niina Pitkänen, PhD; Kristin L. Young⁹, PhD; Mariaelisa Graff¹⁰, PhD; Alexis C. Wood, PhD; Kim V.E. Braun, PhD; Jian'an Luan¹¹, PhD; Mika Kähönen, PhD; Jessica C. Kieft-de Jong¹², RD, PhD; Mohsen Ghanbari¹³, PhD; Nathan Tintle¹⁴, PhD; Rozenn N. Lemaitre¹⁵, PhD; Dennis O. Mook-Kanamori, PhD; Kari North¹⁶, PhD; Mika Helminen¹⁷, PhD; Yasmin Mossavar-Rahmani¹⁸, PhD; Linda Sneltselaar¹⁹, RD, PhD; Lisa W. Martin²⁰, MD; Jorma S. Viikari²¹, MD, PhD; Wendy H. Oddy, PhD; Craig E. Pennell²², PhD; Frits R. Rosendall²³, MD, PhD; M. Arfan Ikram²⁴, MD, PhD; Andre G Uitterlinden²⁵, PhD; Bruce M. Psaty²⁶, MD, PhD; Dariush Mozaffarian²⁷, MD, DrPH; Jerome I. Rotter²⁸, MD; Kent D. Taylor²⁹, PhD; Terho Lehtimäki, PhD; Olli T. Raitakari, MD, PhD; Kara A. Livingston, MPH; Trudy Voortman³⁰, PhD; Nita G. Forouhi³¹, PhD; Nick J. Wareham³², PhD; Renée de Mutsert, PhD; Steven S. Rich³³, PhD; JoAnn E. Manson³⁴, DrPH, MD; Samia Mora³⁵, MD; Paul M. Ridker³⁶, MD; Jordi Merino³⁷, PhD; James B. Meigs³⁸, MD; Hassan S. Dashti³⁹, PhD, RD; Daniel I. Chasman⁴⁰, PhD; Alice H. Lichtenstein⁴¹, DSc; Caren E. Smith⁴², MS, DVM; Josée Dupuis⁴³, PhD; Mark A. Herman⁴⁴, MD; Nicola M. McKeown⁴⁵, PhD

BACKGROUND: ChREBP (carbohydrate responsive element binding protein) is a transcription factor that responds to sugar consumption. Sugar-sweetened beverage (SSB) consumption and genetic variants in the *CHREBP* locus have separately been linked to HDL-C (high-density lipoprotein cholesterol) and triglyceride concentrations. We hypothesized that SSB consumption would modify the association between genetic variants in the *CHREBP* locus and dyslipidemia.

METHODS: Data from 11 cohorts from the Cohorts for Heart and Aging Research in Genomic Epidemiology consortium (N=63 599) and the UK Biobank (N=59 220) were used to quantify associations of SSB consumption, genetic variants, and their interaction on HDL-C and triglyceride concentrations using linear regression models. A total of 1606 single nucleotide polymorphisms within or near *CHREBP* were considered. SSB consumption was estimated from validated questionnaires, and participants were grouped by their estimated intake.

RESULTS: In a meta-analysis, rs71556729 was significantly associated with higher HDL-C concentrations only among the highest SSB consumers (β , 2.12 [95% CI, 1.16–3.07] mg/dL per allele; $P < 0.0001$), but not significantly among the lowest SSB consumers ($P = 0.81$; $P_{\text{Diff}} < 0.0001$). Similar results were observed for 2 additional variants (rs35709627 and rs71556736). For triglyceride, rs55673514 was positively associated with triglyceride concentrations only among the

Correspondence to: Nicola M. McKeown, PhD, Nutrition Epidemiology Department, Jean Mayer U.S. Department of Agriculture, Human Nutrition Research Center on Aging, Tufts University, 711 Washington St, Boston MA 02111. Email nicola.mckeown@tufts.edu
The Data Supplement is available at <https://www.ahajournals.org/doi/suppl/10.1161/CIRCGEN.120.003288>.
For Sources of Funding and Disclosures, see page 514.

© 2021 The Authors. *Circulation: Genomic and Precision Medicine* is published on behalf of the American Heart Association, Inc., by Wolters Kluwer Health, Inc. This is an open access article under the terms of the [Creative Commons Attribution Non-Commercial-NoDerivs](https://creativecommons.org/licenses/by-nc-nd/4.0/) License, which permits use, distribution, and reproduction in any medium, provided that the original work is properly cited, the use is noncommercial, and no modifications or adaptations are made.

Circulation: Genomic and Precision Medicine is available at www.ahajournals.org/journal/circgen

highest SSB consumers (β , 0.06 [95% CI, 0.02–0.09] ln-mg/dL per allele, $P=0.001$) but not the lowest SSB consumers ($P=0.84$; $P_{\text{Diff}}=0.0005$).

CONCLUSIONS: Our results identified genetic variants in the *CHREBP* locus that may protect against SSB-associated reductions in HDL-C and other variants that may exacerbate SSB-associated increases in triglyceride concentrations.

REGISTRATION: URL: <https://www.clinicaltrials.gov>; Unique identifier: NCT00005133, NCT00005121, NCT00005487, and NCT00000479.

Key Words: carbohydrates ■ dyslipidemia ■ epidemiology ■ genetics ■ nutrition ■ sugars ■ triglyceride

Nonstandard Abbreviations and Acronyms

CHARGE	Cohorts for Heart and Aging Research in Genetic Epidemiology
ChREBP	Carbohydrate Responsive Element Binding Protein
GWAS	genome-wide association studies
HDL-C	high-density lipoprotein cholesterol
SNP	single nucleotide polymorphism
SSB	sugar-sweetened beverages
UKB	UK Biobank

Low circulating HDL-C (high-density lipoprotein cholesterol) and elevated fasting triglyceride concentrations are positively associated with risk of type 2 diabetes and cardiovascular disease.^{1–5} Both genetic and environmental factors, including diet, are important determinants of HDL-C and triglyceride concentrations.^{5–7} Genetic determinants of HDL-C and triglyceride concentrations have been identified in genome-wide association studies (GWAS),^{8–12} but the extent to which genetic variants interact with environmental exposures is unknown. It is plausible that unrecognized genetic variants or genetic effects may be suppressed or exacerbated by environmental factors, such as diet.

ChREBP (carbohydrate responsive element binding protein) is a transcription factor that regulates glucose and lipid metabolism in response to sugar consumption, including sugar from sugar-sweetened beverages (SSB).^{13,14} GWAS have consistently observed an association between single nucleotide polymorphisms (SNPs) in the *CHREBP* locus (also known as *MLXIPL*), and HDL-C and triglyceride concentrations.^{8,9,15,16} In animal studies, hepatic ChREBP is robustly activated by dietary fructose, a major constituent of SSB, and potentiates hepatic lipogenesis and triglyceride secretion.^{14,17–20} These findings are consistent with large population-based studies in which high SSB consumption has been associated with elevated fasting plasma triglyceride and reduced HDL-C concentrations,^{21–24} and increased type 2 diabetes^{25–27} and cardiovascular disease²¹ risk. Thus, SNPs within the *CHREBP* locus present promising candidates for gene-SSB interactions on circulating HDL-C and triglyceride concentrations.

These pieces of biological, epidemiological, and genetic evidence suggest that SSB consumption may modify how genetic variants within the *CHREBP* locus influence plasma lipid concentrations in some individuals. Although reduction of SSB consumption is increasingly being encouraged globally,²⁸ public health efforts to reduce SSB consumption have achieved limited success and SSB consumption remains a modifiable dietary exposure that contributes substantially to the burden of type 2 diabetes and cardiovascular disease worldwide.^{29,30} A better understanding of the mechanisms underlying the SSB-ChREBP-lipid relationship may reveal novel mechanisms that contribute to the pathogenesis of type 2 diabetes and cardiovascular disease risk. Understanding these mechanisms may provide alternative strategies and approaches to reduce metabolic disease that may complement or facilitate dietary interventions.

The present study aimed to examine whether SSB consumption may modify the association of genetic variants within the *CHREBP* locus on HDL-C and triglyceride concentrations in aggregated data from cohorts who are part of the Cohorts for Heart and Aging Research in Genetic Epidemiology (CHARGE) consortium.³¹ Descriptions of the CHARGE cohorts are included in the Table 1 in the [Data Supplement](#). We further used data from the UK Biobank (UKB) to assess the reproducibility of these findings in an independent cohort.³²

METHODS

Methods are available in the [Data Supplement](#). The data that support the findings of this study are available from the corresponding author upon reasonable request. All study participants provided written informed consent, and approval for all study protocols was granted by local institutional review boards and oversight committees.

RESULTS

General characteristics and mean dietary intakes for the 11 CHARGE cohorts are shown in Table 1. Replication of previous findings on associations of SSB consumption and SNPs with lipid traits in the CHARGE cohorts are presented in the Results in the [Data Supplement](#).

Table 1. General Characteristics of Participating CHARGE Consortium Cohorts*

	Raine Study	ARIC	FHS	NEO	Fenland	YFS	WGHS	WHI	MESA	CHS	RS
Characteristics											
Country	Australia	United States	United States	the Netherlands	United Kingdom	Finland	United States	United States	United States	United States	the Netherlands
<i>n</i>	617	10 924	6382	5694	10 022	1782	16 284	1 109	1 805	3196	5784
Age, y	20 (1)	55 (6)	49 (14)	56 (6)	49 (7)	38 (5)	55 (7)	65 (7)	70 (10)	72 (5)	66 (8)
Sex (% women)	52.4	52.7	54.3	52.0	53.3	55.9	100	100	51.2	61.0	57.8
Body mass index, kg/m ²	24.5 (5.2)	27.0 (4.8)	27.4 (5.5)	30.0 (4.8)	26.9 (4.8)	25.9 (4.6)	25.9 (4.9)	28.6 (5.7)	28.0 (5.3)	26.3 (4.4)	26.5 (3.7)
Current smoker, %	13.5	24.2	13.4	16.0	12.0	27.6	11.7	10.1	7.0	11.4	23.4
Completed high school, %	81.5	84.9	98.0	93.0	81.8	75.4	100	94.7	96.5	75.1	60.8
Fasting HDL-C, mg/dL	51 (13)	51 (17)	54 (17)	55 (16)	59 (16)	52 (13)	54 (15)	58 (15)	57 (18)	55 (16)	53 (14)
Fasting TG, mg/dL	85 (2)	137 (90)	117 (87)	130 (85)	106 (81)	122 (82)	119 (89)	156 (92)	107 (59)	140 (76)	137 (71.0)
Dietary intakes											
SSB intake, servings/d	0.7 (1.0)	0.5 (0.9)	0.4 (0.8)	0.4 (0.8)	0.3 (0.6)	0.3 (0.5)	0.3 (0.6)	0.2 (0.6)	0.1 (0.5)	0.1 (0.3)	0.1 (0.2)
<1 serving/mo, %	13.6	35.7	33.9	49.4	35.8	23.6	44.8	58.0	70.0	63.4	71.9
1–4 serving/mo, %	14.4	16.3	24.3	13.8	24.6	31.9	22.0	19.3	12.4	16.9	13.5
1–2 serving/wk, %	23.8	12.1	9.76	14.1	14.0	17.1	13.1	3.5	2.2	0.06	6.4
3–7 serving/wk, %	29.2	25.7	21.3	11.7	15.2	21.0	15.1	15.3	8.6	18.7	7.5
>1 serving/d, %	19.0	10.3	10.8	11.0	10.4	6.3	5.0	3.9	2.3	0.9	0.8
Energy intake, kcal/d	1857 (850)	1644 (599)	1956 (645)	2291 (763)	1935 (578)	2381 (762)	1732 (524)	1698 (670)	1708 (734)	2024 (654)	2046 (1409)
Saturated fat intake, % total energy	16.1 (3.1)	12.2 (3.1)	11.1 (2.9)	12.4 (2.9)	12.5 (3.0)	11.8 (2.4)	10.2 (2.5)	11.6 (3.3)	11.3 (3.3)	10.4 (2.2)	14.4 (3.1)
Fruit intake, servings/d	1.9 (1.3)	1.5 (1.3)	1.1 (1.0)	1.1 (0.9)	2.7 (2.2)	3.4 (3.1)	1.9 (1.2)	1.8 (1.2)	2.1 (1.7)	2.7 (1.5)	1.2 (1.0)
Vegetable intake, servings/d	1.7 (0.9)	1.7 (1.2)	2.0 (1.1)	2.8 (1.5)	5.0 (2.5)	1.4 (1.8)	3.9 (2.3)	2.2 (1.3)	2.4 (1.5)	2.8 (1.5)	2.8 (2.1)
Whole grain intake, servings/d	0.8 (1.0)	1.1 (1.1)	1.2 (1.2)	NA	1.8 (1.4)	3.2 (1.9)	1.5 (1.2)	1.2 (0.8)	1.0 (0.8)	1.0 (0.7)	3.4 (2.9)
Fish intake, servings/d	0.4 (0.6)	0.3 (0.3)	0.4 (0.4)	0.2 (0.2)	0.4 (0.3)	1.3 (0.9)	0.3 (0.2)	0.2 (0.2)	0.3 (0.3)	0.3 (0.3)	0.1 (0.2)
Nuts/seeds intake, servings/d	0.1 (0.2)	0.4 (0.6)	0.6 (0.9)	0.8 (1.0)	0.2 (0.3)	0.1 (0.1)	0.3 (0.4)	0.2 (0.3)	0.5 (0.6)	0.2 (0.3)	0.2 (2.1)
Alcohol intake, g/d	7.8 (8.9)	6.7 (13.5)	10.5 (14.8)	15.5 (17.4)	9.5 (12.7)	8.6 (13.4)	4.3 (8.5)	5.0 (10.2)	8.8 (15.5)	5.5 (12.9)	11.1 (15.5)

ARIC indicates Atherosclerosis Risk in Communities Study; CHARGE, Cohorts for Heart and Aging Research in Genomic Epidemiology; CHS, Cardiovascular Health Study; FHS, Framingham Heart Study; HDL-C, high-density lipoprotein cholesterol; MESA, Multi-Ethnic Study of Atherosclerosis; *n*, total sample size; NEO, Netherlands Epidemiology in Obesity Study; RS, the Rotterdam Study; SSB, sugar-sweetened beverages; TG, triglyceride; WGHS, Women’s Genome Health Study; WHI, Women’s Health Initiative; and YFS, Young Finns Study.

*Means (SD) or percentage for maximum observations available for analysis. Sample sizes may vary depending on availability of genotype and covariate information. Cohorts are ordered by estimate of sugar-sweetened beverage intake.

Difference Test Interactions Between SSB Consumption and SNPs on HDL-C and Triglyceride in CHARGE Cohorts

We identified 55 SNPs that displayed a significant ($P_{Diff} < 0.0001$) or suggestive ($P_{Diff} < 0.005$) difference in estimated effect by category of SSB consumption on HDL-C concentrations in either of the 2 covariate

models in the meta-analysis of the CHARGE cohorts. Among these 55 top SNPs, 4 distinct signals for HDL-C concentrations were observed when applying the different test interaction. Two distinct SNPs in moderate LD (linkage disequilibrium) with one another (rs35709627 and rs71556729; $R^2=0.55$ [Figure II in the [Data Supplement](#)]) and in low LD with the top SNP identified in the overall analysis for HDL-C concentrations ($R^2 < 0.3$)

Downloaded from <http://ahajournals.org> by on March 18, 2022

Table 2. Top SNPs in Meta-Analysis of Difference Test ($P_{Diff} < 0.005$) and Cross-Product ($P_{Interact} < 0.005$) Interactions Between SSB Consumption and SNPs on HDL-C and TG Concentrations in CHARGE Consortium Cohorts*

SNP	Location (Hg19)	Alleles (E/A)†	MAF	Model‡	SSB intake category	n	Effect size (SE)§	P value	Direction	R²	P value	
HDL-C, mg/dL												
Difference test											P_{Diff}	
rs35709627#	72999171	A/G	0.05	Model 1	<1 serving/mo	24 389	-0.01 (0.04)	0.86	+++++???	23%	1.98×10 ^{-5**}	
					>1 serving/d	4033	3.23 (0.77)	2	+?+?+?+?+?	0%		
				Model 2	<1 serving/mo	23 801	0.006 (0.04)	0.86	+++++???	30%		0.0001
					>1 serving/d	3955	2.72 (0.72)	0.0002	+?+?+?+?+?	0%		
rs71556729#	72989516	T/C	0.05	Model 1	<1 serving/mo	23 974	0.02 (0.06)	0.77	+?+?+?+?+?	0%	4.78×10 ^{-5**}	
					>1 serving/d	3359	4.47 (1.10)	5	??+?+?+?+?	0%		
				Model 2	<1 serving/mo	22 835	0.01 (0.05)	0.83	+?+?+?+?+?	0%		0.0001
					>1 serving/d	3299	3.89 (1.04)	0.0002	??+?+?+?+?	0%		
rs71556736	73034929	T/C	0.13	Model 1	<1 serving/mo	24 389	-0.0005 (0.02)	0.98	+++++???	60%	0.0003	
					>1 serving/d	4033	1.65 (0.47)	0.0004	+?+?+?+?+?	0%		
				Model 2	<1 serving/mo	23 801	0.007 (0.02)	0.69	+++++???	67%		0.002
					>1 serving/d	3955	1.34 (0.43)	0.002	+?+?+?+?+?	0%		
rs73137017	72974413	G/A	0.04	Model 1	<1 serving/mo	24 020	-0.05 (0.06)	0.46	-++++?+?+?	0%	0.002	
					>1 serving/d	3933	-3.13 (0.99)	0.002	-?+?+?+?+?	0%		
				Model 2	<1 serving/mo	23 437	-0.008 (0.05)	0.88	+?+?+?+?+?	0%		0.003
					>1 serving/d	3855	-2.64 (0.91)	0.004	-?+?+?+?+?	0%		
Cross-product interaction test											$P_{Interact}$	
rs71556729	72989516	T/C	0.03	Model 1	...	55 418	0.66 (0.21)	...	+++++?+?+?	0%	0.001	
				Model 2	...	53 394	0.68 (0.20)	...	+?+?+?+?+?	26%		0.0007
rs79578725	73002455	A/G	0.05	Model 1	...	53 662	-0.51 (0.18)	...	+?-+?-?+?+?	0%	0.005	
				Model 2	...	52 328	-0.18 (0.17)	...	+?+?+?+?+?	0%		0.28
TG, ln-mg/dL												
Difference test											P_{Diff}	
rs799157	73020301	T/C	0.05	Model 1	<1 serving/mo	23 974	0.02 (0.01)	0.11	+?+?+?+?+?	59%	0.005	
					>1 serving/d	4033	0.11 (0.03)	0.002	+?+?+?+?+?	0%		
				Model 2	<1 serving/mo	23 403	0.02 (0.01)	0.17	+?+?+?+?+?	68%		0.008
					>1 serving/d	3955	0.09 (0.03)	0.004	+?+?+?+?+?	0%		
Cross-product interaction test											$P_{Interact}$	
rs55673514	73021456	G/A	0.04	Model 1	...	57 977	0.02 (0.01)	...	-+++++?+?+?	17%	0.04	
				Model 2	...	56 578	0.02 (0.01)	...	-+++++?+?+?	0%		0.005

CHARGE indicates Cohorts for Heart and Aging Research in Genetic Epidemiology; CHS, Cardiovascular Health Study; FHS, Framingham Heart Study; HDL-C, high-density lipoprotein cholesterol; MAF, minor allele frequency; MESA, Multi-Ethnic Study of Atherosclerosis; NEO, Netherlands Epidemiology in Obesity Study; RS, the Rotterdam Study; SNP, single nucleotide polymorphism; SSB, sugar-sweetened beverages; TG, triglyceride; WGHS, Women's Genome Health Study; and YFS, Young Finns Study.

*Top signals represent suggestive interactions $P_{Diff} < 0.005$ or $P_{Interact} < 0.005$.

†Alleles presented as effect (E)/alternative (A) alleles.

‡Model 1 adjusted for age (y), sex (male/female), total energy intake (kcal/d) field center (CHS, FHS, YFS, Fenland, RS, MESA), and accounted for family or population structure where applicable (FHS, YFS, Fenland, NEO, MESA, WGHS, Raine Study, MESA); model 2 adjusted for model 1 covariates plus cohort-specific definition of education, smoking, physical activity, alcohol intake, and body mass index (kg/m²).

§For the difference test, β (SE) represents the direction and magnitude of the difference in the outcome trait with each additional effect allele among categories of SSB consumption. For the cross-product interaction test, β (SE) represents the direction and magnitude of the difference in the outcome trait with each additional effect allele, per each increase in category of SSB intake (<1 serving/mo, 1–4 servings/mo, 1–2 servings/wk, 3–7 servings/wk, >1 serving/d).

||Order of cohorts for regression coefficient directions: FHS, YFS, Fenland Study, CHS, NEO, RS, WGHS, WHI, ARIC, Raine Study, MESA (+, positive effect size; -, negative effect size; and ?, SNP not available in cohort).

¶ P represents P_{Diff} for the difference test for the highest and lowest category of SSB intake (<1 serving/mo vs >1 serving/d). P represents $P_{Interact}$ for the cross-product interaction regression coefficient of additive SSBxSNP categories.

#Linkage disequilibrium (R^2) between rs13240662 and rs71556729=0.55 in European ancestry groups of phase 3 (version 5) of the 1000 genomes project.

**Statistically significant interaction based on Bonferroni-corrected P_{Diff} or $P_{Interact} < 0.0001$.

displayed a statistically significant difference in effect by category of SSB intake on HDL-C concentrations in fully adjusted models (model 2; $P_{Diff} < 0.0001$; Table 2 and Figures III and IV in the [Data Supplement](#)). In model 2, each additional minor allele at rs35709627 (β [SE], 2.72

[0.72], $P=0.0002$) and rs71556729 (β [SE], 3.89 [1.04], $P=0.0002$) was associated with higher mean concentrations of HDL-C concentrations among the highest SSB consumers (>1 serving/d), but was not associated with mean HDL-C concentrations among the lowest SSB

consumers (<1 serving/mo; $P>0.05$). The effect sizes of these SNPs among the highest SSB consumers were consistent across all the cohorts. There was no heterogeneity ($P=0\%$) observed for the top 4 distinct signals (statistically significant and suggestive) among the highest SSB consumers (>1 serving/d), which could be due to low power to detect heterogeneity given the smaller sample size available among the highest SSB consumers (maximum, $n=4033$).

No statistically significant differences in effect by category of SSB intake on triglyceride concentrations were observed when applying the difference test ($P_{\text{Diff}} >0.0001$ for all SNPs). One SNP (rs799157) in moderate LD with a top SNP identified in the overall analysis for triglyceride concentrations (Table X in the [Data Supplement](#); R^2 with rs42124=0.44) displayed a suggestive difference in effect by category of SSB intake on triglyceride concentrations in minimally adjusted models (model 1; $P_{\text{Diff}}=0.005$; Table 2). Each additional minor allele at rs799157 was associated with higher mean triglyceride concentrations among the highest SSB consumers (>1 serving/d; β [SE]: 0.11 [0.03] ln-mg/dL, $P=0.002$), but this association was attenuated among the lowest SSB consumers (β [SE], 0.01 [0.01] ln-mg/dL, $P=0.11$; Figure V in the [Data Supplement](#)). The direction of the effect size of this SNP among the highest SSB consumers was consistent across all the cohorts in which these SNPs were available, and heterogeneity was low among the highest SSB consumers ($P=0\%$).

Cross-Product Interactions Between SSB Consumption and SNPs on HDL-C and Triglyceride in CHARGE Cohorts

No statistically significant cross-product interactions between SNPs and SSB consumption on HDL-C or triglyceride concentrations were observed ($P_{\text{interaction}} >0.0001$), while some tests were suggestive ($P_{\text{interaction}} <0.005$; Table 2). Three SNPs displayed a suggestive interaction with SSB consumption on HDL-C concentrations in either covariate model, and the clumping identified 2 distinct signals (rs71556729 and rs79578725). One SNP (rs55673514) displayed a suggestive interaction with SSB on triglyceride concentrations in model 2. Forest plots for top distinct signals in SSBxSNP interaction analyses on lipid traits are presented in Figures VI and VII in the [Data Supplement](#).

Interactions Between SSB Consumption and SNPs on Lipid Traits in the UKB and Meta-Analysis With CHARGE Cohort Results

General characteristics and mean dietary intakes for the 59220 UKB participants are shown in Table VI in the [Data Supplement](#). Two out of 5 top signals for HDL-C

(rs35709627 and rs71556729) and one out of 2 top signals for triglyceride in the CHARGE consortium were replicated among the UKB participants (Table VII in the [Data Supplement](#)). In a meta-analysis of the top results from the CHARGE consortium and data from the UKB, 3 out of the 5 top SNPs for HDL-C and one out of the 2 top SNPs for triglyceride concentrations displayed statistically significant interactions (Table 3). The top SNP for HDL-C concentrations was located at rs71556729 (Figure 1A). In fully adjusted models, the association between the minor allele at rs71556729 with HDL-C concentrations was observed only among the highest SSB consumers (β , 2.12 [95% CI, 1.16–3.07] mg/dL, $P<0.0001$) and not the lowest SSB consumers ($P=0.81$; $P_{\text{Diff}} <0.0001$). Similarly, 2 SNPs in low to moderate LD with rs71556729 (*TBL2*-rs35709627; R^2 with rs71556729=0.55; rs71556736; R^2 with rs71556729=0.19) displayed similar statistically significant differences in effect by category of SSB intake ($P_{\text{Diff}} <0.0001$). The SNP at rs55673514 displayed a suggestive interaction with triglyceride concentrations in the CHARGE meta-analysis and was statistically significant after including data from the UKB (Figure 1B, $P_{\text{Diff}} <0.0005$). The association of the minor allele at rs55673514 with triglyceride concentrations was observed only among the highest SSB consumers (β , 0.06 [95% CI, 0.02–0.09] ln-mg/dL, $P=0.001$) and not the lowest SSB consumers ($P=0.84$). The SNP at rs55673514 is not in appreciable LD with any of the top SNPs in the overall analysis for triglyceride concentrations ($R^2<0.1$). A heatmap of LD among top SNPs in overall and interaction analyses is provided in Figure II in the [Data Supplement](#). Sensitivity analyses examining the influence of adjustment for other dietary factors and fasting hours among UKB participants yielded similar results for the top SNPs identified in the meta-analysis (Results in the [Data Supplement](#)).

DISCUSSION

In this study, including up to 86241 participants for whom genetic and SSB consumption data were available, we identified novel interactions between genetic variants at the *CHREBP* locus and SSB consumption on HDL-C and triglyceride concentrations. Our data suggest that the magnitude of the inverse association between SSB consumption and HDL-C concentrations is lower among individuals harboring genetic variants at rs71556729, rs35709627, and rs71556736, and the positive association between SSB consumption and triglyceride concentrations is exacerbated among individuals harboring genetic variants at rs55673514. In the CHARGE cohorts, we also observed a consistent inverse association between SSB consumption on fasting HDL-C and positive association on triglyceride concentrations. We also replicated previously observed main associations between SNPs in the *CHREBP* locus and HDL-C and triglyceride concentrations.

Table 3. Fixed-Effect Meta-Analysis of Top Candidate SNPs for Difference Test Interactions Between SSB Consumption and SNPs on HDL-C and TG Concentrations in CHARGE Consortium Cohorts and UKB*

SNP	Location (Hg19)	Alleles (E/A)†	MAF	SSB intake category	n	Effect size (SE)	P value	Direction‡	R ²	P _{Diff}
HDL-C, mg/dL										
rs71556729§	72989516	T/C	0.05	Low	68 701	0.01 (0.05)	0.81	++	0%	1.5×10 ⁻⁶
				High	15 227	2.06 (0.44)	3.48×10 ⁻⁶	++	74%	
rs35709627§	72999171	A/G	0.05	Low	69 667	0.01 (0.04)	0.74	++	0%	1.0×10 ⁻⁶
				High	15 883	1.37 (0.32)	2.15×10 ⁻⁵	++	87%	
rs71556736	73034929	T/C	0.13	Low	69 667	0.02 (0.02)	0.33	++	93%	2.5×10 ⁻⁵
				High	15 882	0.84 (0.20)	3.27×10 ⁻⁵	++	42%	
rs73137017	72974413	G/A	0.04	Low	69 303	0.01 (0.05)	0.82	++	0%	0.04
				High	15 783	0.73 (0.37)	0.05	++	81%	
rs79578725	73002455	A/G	0.05	Low	68 929	-0.02 (0.04)	0.64	--	21%	0.55
				High	15 783	-0.22 (0.36)	0.53	--	0%	
TG, ln-mg/dL										
rs55673514	73021456	G/A	0.04	Low	69 096	-0.002 (0.01)	0.84	+-	29%	0.0005
				High	15 395	-0.06 (0.02)	0.001	--	0%	
rs799157	73020301	T/C	0.05	Low	70 235	0.03 (0.01)	2.55×10 ⁻⁷	++	59%	0.05
				High	16 006	0.06 (0.02)	0.0002	++	19%	

CHARGE indicates Cohorts for Heart and Aging Research in Genetic Epidemiology; HDL-C, high-density lipoprotein cholesterol; MAF, minor allele frequency; SNP, single nucleotide polymorphism; SSB, sugar-sweetened beverages; TG, triglyceride; and UKB, UK Biobank.

*Top candidates represent statistically significant or suggestive interactions ($P_{Diff} < 0.005$ or $P_{interact} < 0.005$) in CHARGE cohort meta-analysis. Models adjusted for age, sex, total energy intake, field center, and accounted for family or population structure where applicable plus education, smoking, physical activity, alcohol intake, and body mass index (kg/m²). For the difference test, interaction coefficients are shown as β (SE), where β represents the direction and magnitude of change in the outcome trait with each additional effect allele among participants with low (CHARGE <1 serving/mo; UKB: nonconsumers) or high (CHARGE >1 serving/d; UKB: consumers) SSB consumption.

†Alleles presented as effect (E)/alternative (A) alleles.

‡Order of cohorts for regression coefficient directions: CHARGE cohorts, UKB (+, positive effect size; -, negative effect size).

§Linkage disequilibrium (R²) between rs13240662 and rs71556729=0.55 in European ancestry groups of phase 3 (version 5) of the 1000 genomes project.

||Indicates a statistically significant interaction based on Bonferroni-corrected $P_{Diff} < 0.01$ (0.05/5 top signals) for HDL-C and $P_{Diff} < 0.025$ (0.05/2 top signals) for TG concentrations.

Our study provides evidence that SSB consumption may modify the association of genetic variants in the *CHREBP* locus with HDL-C and triglyceride concentrations. Participants with the minor allele at rs71556729, rs35709627, and rs71556736 and high SSB consumption had higher mean HDL-C concentrations than those with the major allele who also had high SSB consumption. This suggests that participants with the minor allele at rs71556729 (MAF [minor allele frequency]=0.05), rs35709627 (MAF=0.05), and rs71556736 (MAF=0.13) may be protected against SSB-induced reductions in HDL-C concentrations. The region containing these SNPs is enriched for enhancer histone marks and these SNPs lie within putative regulatory motifs for transcription factors that could potentially regulate ChREBP expression and function in an SSB-dependent manner.³³ Similarly, rs55673514, which associates with triglyceride only among the highest SSB consumers, lies within a region enriched for enhancer histone marks in several tissues, including liver.³³ Given the strong inverse relationship between HDL-C and triglyceride concentrations, additional investigation into how these SNPs may independently influence HDL-C or triglyceride concentrations could provide new insights into the distinct mechanisms contributing to plasma HDL-C and

triglyceride concentrations. Additional discussion of main associations between SNPs and SSB on triglyceride and HDL-C in the CHARGE cohorts is provided in the [Data Supplement](#).

The rs71556729 interaction was a top signal when testing for interactions using the difference test and the cross-product interaction test on HDL-C concentrations in the CHARGE cohorts. However, when applying the cross-product interaction test, the interaction appeared less significant than the result from the difference test. This may be due to heterogeneity in the association between rs71556729 and HDL-C concentrations resulting from increased misclassification of SSB consumption among those reporting low (1–4 servings/mo) to moderate (1–2 and 3–7 servings/wk) SSB consumption (Figure IV in the [Data Supplement](#)). These results suggest that the difference test may be a useful method for identifying gene-diet interactions in observational studies, and this could be due to a reduction in misclassification of SSB intake and the potential to detect nonlinear interaction effects. However, we do not comprehensively compare the difference test to the cross-product interaction test. Future methodological studies comparing the usefulness of these 2 methods with varying degrees of

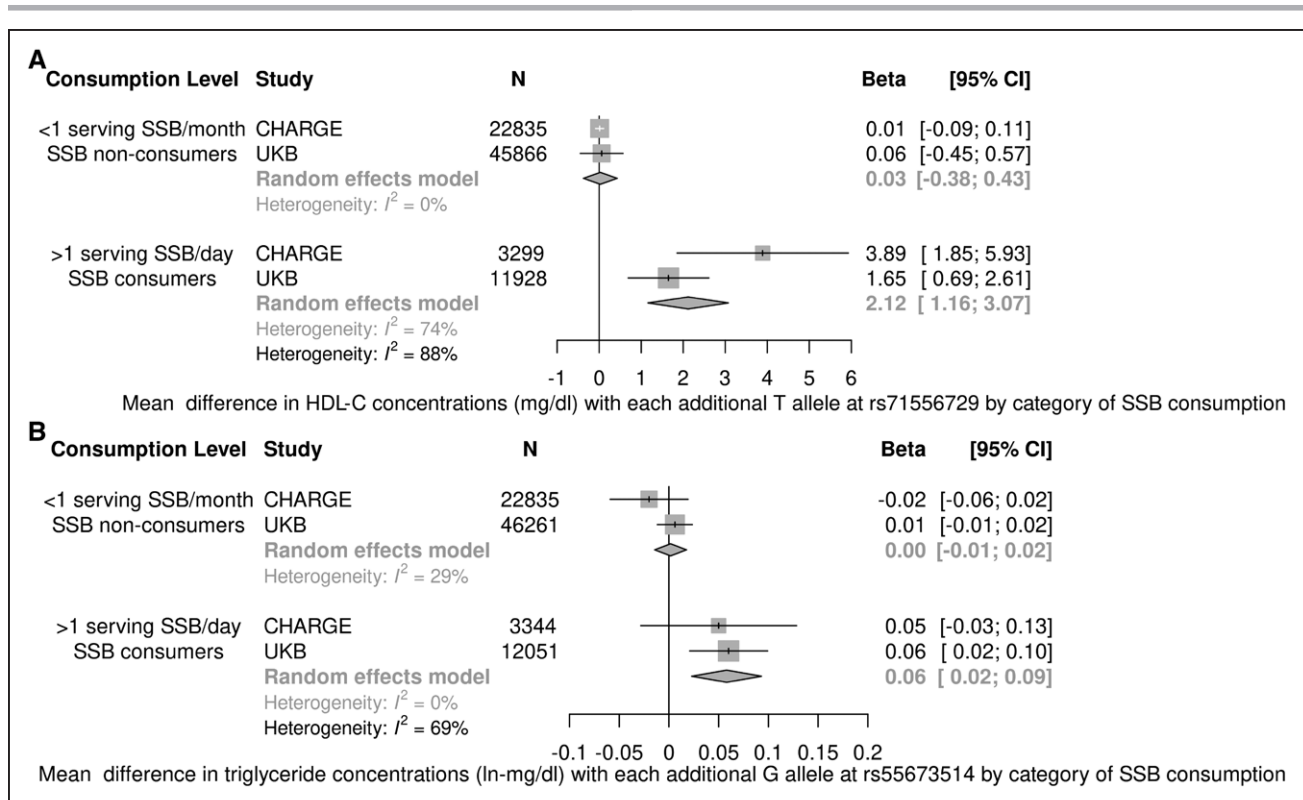


Figure. Associations between top candidate single nucleotide polymorphisms (SNPs) and HDL-C (high-density lipoprotein cholesterol) and triglyceride (TG) concentrations stratified by category of sugar-sweetened beverages (SSB) intake in a random effects meta-analysis of the Cohorts for Heart and Aging Research in Genetic Epidemiology (CHARGE) cohorts and the UK Biobank (UKB).

A, In a random effects meta-analysis of the CHARGE cohorts and the UKB, the association of the minor allele at rs71556729 with HDL-C concentrations was observed only among the highest SSB consumers (β , 2.12 [95% CI, 1.16–3.07] mg/dL, $P < 0.0001$) and not the lowest SSB consumers ($P = 0.81$; $P_{\text{Diff}} < 0.0001$). **B**, In a random effects meta-analysis of the CHARGE cohorts and the UKB, the association of the minor allele at rs55673514 with TG concentrations was observed only among the highest SSB consumers (β , 0.06 [95% CI, 0.02–0.09] ln-mg/dL, $P = 0.001$), and not the lowest SSB consumers ($P = 0.84$; $P_{\text{Diff}} < 0.0005$); linear regression models represent associations between each additional effect allele and HDL-C (mg/dL) or TG (ln-mg/dL) concentrations among SSB consumption categories accounting for family, population structure, and field center (where applicable) and adjusting for age, sex, total energy intake, education, smoking, physical activity, alcohol intake, and body mass index. Intake categories are different for the highest SSB consumers (CHARGE: >1 serving/d; UKB: SSB consumers) and lowest SSB consumers (CHARGE: <1 serving/mo; UKB: SSB nonconsumers) in the 2 samples. <https://www.ahajournals.org/journal/circgen>

misclassification and types of exposures may be useful to inform future gene-diet interaction studies.

There is a limited body of evidence describing how genes implicated in various diseases may interact with SSB consumption to modify cardiometabolic health and noncommunicable disease risk.³⁴ One large prospective cohort study among Swedish adults examined whether genetic risk for dyslipidemia (using a weighted genetic risk score) interacted with SSB consumption to influence plasma lipid concentrations, but no significant interactions were observed.³⁵ Although genetic risk scores can be useful for translation, as previously shown for the interaction between SSB consumption and genetic risk for obesity,³⁶ a weakness of genetic risk scores is that aggregation of multiple SNPs from across the genome does not allow inclusion of potential interacting SNPs that may not be associated with the outcome in overall analyses. In addition, interaction effects of SNPs may be mitigated by the null interaction effects of other SNPs

included in the genetic risk score. The candidate gene approach in the current study allows for the potential to generate hypotheses of the mechanisms underlying the interaction that could be tested using animal and human models in future studies.

No previous studies have examined the interaction between SNPs in the *CHREBP* region and SSB consumption on lipid concentrations. We previously investigated how selected SNPs in the *ChREBP-FGF21* pathway interacted with SSB consumption to influence fasting insulin and glucose measures among 34 748 adults from CHARGE cohorts, but we did not identify a significant cross-product interaction that was consistent among the discovery and replication phases of that study.³⁷ In the current study, we applied a comprehensive approach that tested a wide range of SNPs in the *CHREBP* region that were not necessarily identified in GWAS. Given that our suggestive interaction results do not include any SNPs that were statistically significant in

the overall SNP analyses, our data indicate that there may be additional SNPs not identified in GWAS contributing to the heritability of HDL-C and triglyceride concentrations, but their contribution is influenced by SSB consumption. Similar to previous GWAS for body mass index that have identified new loci when adjusting for environmental factors,^{38,39} we provide an additional example of how missing genetic heritability may be revealed when accounting for environmental factors, such as SSB consumption in the current study.

The strengths of our study include the large sample size attained through meta-analysis of multiple independent cohorts, the ability to standardize the analyses conducted in all cohorts through a collaborative approach, the use of an external cohort to validate findings, and the use of multiple methods to screen for potential interactions between SSB consumption and over 1606 SNPs in the *CHREBP* region on HDL-C and triglyceride concentrations. The analytic approach revealed novel SNPs that may contribute to unexplained heritability of HDL-C and triglyceride concentrations. Limitations of this study include its observational design that constrain our ability to infer causality, the sample of European-descent adults that limits generalizability, the use of self-reported dietary data from food frequency questionnaires and 24-hour recall that may lead to misclassification of food and nutrient intakes, and the possibility of residual confounding, even after controlling for potential dietary and lifestyle factors that co-vary with SSB intake. Our focus on the comparison of the highest SSB consumers to the lowest SSB consumers helps minimize this potential misclassification by focusing on extreme consumption patterns. Misclassification in the UKB is likely given that a snapshot of intake on a single day cannot provide a reliable estimate of usual SSB consumption. However, this misclassification is likely nondifferential by genotype, which would only result in attenuation of our results. Additionally, while our definition of SSB did consider a range of SSB, it was not comprehensive. For example, it did not include commonly consumed beverages, such as sweetened tea or coffee, and we included several types of SSB in the same exposure definition (colas and fruit drinks). The blood collection among UKB participants was conducted after less than the recommended 8 hours of fasting before measurement of lipids. We adjusted for fasting hours to help account for this variability and conducted a sensitivity analysis to examine the top interactions observed by fasting hours. The LD-based method used to estimate the number of independent tests in the region may be overly conservative, which could potentially lead to inflation of type II error rate. Thus, we additionally present suggestive results that did not reach statistical significance. Given these weaknesses, results from this study should be used to inform future studies with larger samples sizes or detailed experimental studies. Minority populations are disproportionately burdened by dyslipidemia and have higher SSB intake,^{40,41}

and thus more studies in these populations may help reduce health inequality and disparity.

In conclusion, our findings suggest that the minor alleles of 3 SNPs in the *CHREBP* region (rs71556729, rs35709627, and rs71556736) may be protective against SSB-induced low HDL-C concentrations and the minor allele at rs55673514 may exacerbate positive associations between SSB consumption and triglyceride concentrations. Several of the top SNPs identified in the interaction analyses were not top SNPs identified in the overall analyses, providing evidence that some genetic associations may be revealed only when conditioned on environmental factors, such as the range of SSB consumption in the current study. As larger data sets with genetics, diet, and lipids data become available, additional suggestive interactions between SSB consumption and SNPs within the *CHREBP* region on HDL-C and triglyceride concentrations observed here may warrant further investigation.

ARTICLE INFORMATION

Received December 4, 2020; accepted June 21, 2021.

Affiliations

Nutritional Epidemiology Program (D.E.H., M. Guirette, K.A.L., N.M.M.), Cardiovascular Nutrition Laboratory (A.H.L.), Nutrition and Genomics Laboratory (C.E.S.), Jean Mayer U.S. Department of Agriculture Human Nutrition Research Center on Aging, and Friedman School of Nutrition Science and Policy (D.M.), Tufts University, Boston, MA. Channing Division of Network Medicine (D.E.H., J.E.M.), Division of Preventive Medicine (J.E.M., S.M., P.M.R., D.I.C.) and Cardiovascular Division of Medicine and Center for Lipid Metabolomics (S.M., P.M.R.), Brigham and Women's Hospital and Harvard Medical School, Boston, MA. Department of Nutrition (D.E.H.) and Department of Epidemiology (J.E.M.), Harvard T.H. Chan School of Public Health, Boston, MA. Department of Biostatistics, Boston University School of Public Health, MA (G.M.P., A.N.P., J.D.). Medical Research Council Epidemiology Unit, University of Cambridge, United Kingdom (F.I., J.L., N.G.F., N.J.W.). Cardiovascular Health Research Unit, Departments of Biostatistics (T.M.B.), Department of Medicine (T.M.B., R.N.L., B.M.P.), and Departments of Epidemiology and Health Services (B.M.P.), University of Washington, Seattle. School of Medicine and Public Health, Faculty of Medicine and Health, The University of Newcastle, NSW, Australia (C.A.W., C.E.P.). Department of Clinical Epidemiology (R.L.G., D.O.M.-K., F.R.R., R.d.M.) and Department of Public Health and Primary Care (J.C.L.d.J., D.O.M.-K.), Leiden University Medical Center, the Netherlands. Dordt University, Sioux Center, IA (J.M.W., N.T.). Atria Biobank (N.P.), Research Centre of Applied and Preventive Cardiovascular Medicine (N.P., O.T.R.), Department of Medicine (J.S.V.), and Centre for Population Health Research (O.T.R.), University of Turku, Finland. Division of Medicine (J.S.V.) and Department of Clinical Physiology and Nuclear Medicine (O.T.R.), Turku University Hospital, Finland. Department of Epidemiology, Gillings School of Global Public Health (K.L.Y., M. Graff, K.N.) and Carolina Center for Genome Science (K.N.), University of North Carolina, Chapel Hill. USDA/ARS Children's Nutrition Research Center, Department of Pediatrics, Baylor College of Medicine, Houston, TX (A.C.W.). Department of Epidemiology (K.V.E.B., J.C.K.-d.J., M. Ghanbari, M.A.I.) and Department of Internal Medicine (A.G.U.), Erasmus MC University Medical Center Rotterdam, the Netherlands. Department of Clinical Physiology (M.K.) and Research Development and Innovation Centre (M.H.), Tampere University Hospital, Finland. Department of Clinical Physiology (M.K.) and Department of Clinical Chemistry (T.L.), Finnish Cardiovascular Research Center-Tampere, Faculty of Medicine and Life Sciences, University of Tampere, Finland. Faculty of Social Sciences, Health Sciences, Tampere University, Finland (M.H.). Department of Epidemiology and Population Health, Albert Einstein College of Medicine, Bronx, NY (Y.M.-R.). Department of Epidemiology, University of Iowa, Iowa City (L.S.). George Washington University School of Medicine and Health Sciences, Washington, D.C. (L.W.M.). Menzies Institute for Medical Research, University of Tasmania, HOB, Australia (W.H.O.). Kaiser Permanente Washington Health Research Institute, Seattle, WA (B.M.P.). The Institute for

Translational Genomics and Population Sciences, Department of Pediatrics, The Lundquist Institute for Biomedical Innovation at Harbor-UCLA Medical Center, Torrance, CA (J.I.R., K.D.T.). Department of Clinical Chemistry, Fimlab Laboratories, Tampere, Finland (T.L.). Center for Public Health Genomics and Department of Public Health Sciences, University of Virginia School of Medicine, Charlottesville (S.S.R.). Program in Medical and Population Genetics (J.M., J.B.M.), and Program in Metabolism (J.M., J.B.M.), Broad Institute of MIT and Harvard, Cambridge, MA. Department of Medicine, Harvard Medical School, Boston, MA (J.M., J.B.M.). Institut d'Investigació Sanitària Pere Virgili, Universitat Rovira i Virgili, Reus, Spain (J.M.). Diabetes Unit and Center for Genomic Medicine (J.M., H.S.D.), Division of General Internal Medicine (J.B.M.), and Department of Anesthesia, Critical Care and Pain Medicine (H.S.D.), Massachusetts General Hospital and Harvard Medical School, Boston. Division Of Endocrinology, Metabolism, and Nutrition, Department of Medicine and Duke Molecular Physiology Institute, Duke University School of Medicine, Durham, NC (M.A.H.).

Acknowledgments

Preliminary results were presented as abstracts at the annual meeting for the American Society for Nutrition 2020. Please see Table I in the [Data Supplement](#) for cohort-specific acknowledgments. The authors' responsibilities were as follows: Dr Haslam, Dr Peloso, M. Guirette, Dr Dashti, Dr Lichtenstein, Dr Smith, Dr Dupuis, Dr Herman, and Dr McKeown designed the study. Dr Haslam, Dr Peloso, M. Guirette, Dr Lemaitre, Dr Tintle, Dr Mook-Kanamori, Dr North, Dr Viikari, Dr Sneetselaar, Dr Mossavar-Rahmani, Dr Martin, Dr Oddy, Dr Pennell, Dr Rosendall, Dr Arfan Ikram, Dr Uitterlinden, Dr Voortman, Dr Psaty, Dr Mozaffarian, Dr Rotter, Dr Taylor, Dr Lehtimäki, Dr Raitakari, K.A. Livingston, Dr Forouhi, Dr Wareham, Dr Luan, Dr de Mutsert, Dr Rich, Dr Manson, Dr Mora, Dr Ridker, Dr Meigs, Dr Chasman, Dr Lichtenstein, Dr Smith, Dr Dupuis, Dr Herman, and Dr McKeown played a role in acquisition of the data and critical editing of the article; Dr Haslam, Dr Peloso, M. Guirette, Dr Imamura, T.M. Bartz, Dr Pitsillides, Dr Wang, Dr Li-Gao, J.M. Westra, Dr Pitkänen, Dr Young, Dr Graff, Dr Wood, Dr Braun, Dr Luan, Dr Kähönen, Dr Kieffe-de Jong, Dr Ghanbari, and Dr Tintle conducted statistical analyses; Dr Haslam, Dr Peloso, M. Guirette, Dr Dashti, Dr Merino, Dr Lichtenstein, Dr Smith, Dr Dupuis, Dr Herman, and Dr McKeown interpreted the data; Dr Haslam, Dr Peloso, M. Guirette, Dr Dashti, Dr Merino, K.A. Livingston, Dr Lichtenstein, Dr Smith, Dr Dupuis, Dr Herman, and Dr McKeown contributed to writing of the article; all authors read and approved the final version of the article. Drs Haslam and McKeown are the guarantors of this work and, as such, had full access to all the data in the study and take responsibility for the integrity of the data and accuracy of the data analysis.

Sources of Funding

This work is supported by National Institutes of Health (NIH) 5T32HL069772-15 and NIH 2T32CA009001-39 (Haslam), American Heart Association 16CSA28590003 (Haslam, McKeown, and Herman), NIH R01 DK100425 (Herman), R01 DK121710 (McKeown, Herman, Smith, and Dupuis), K08 HL112845 (Smith), USDA ARS agreement No. 58-1950-4-003 (McKeown) and 588-1950-9-001 (Lichtenstein). Infrastructure for the Cohorts for Heart and Aging Research in Genetic Epidemiology (CHARGE) Consortium is supported in part by the National Heart, Lung, and Blood Institute grant HL105756. Please see Table I in the [Data Supplement](#) for funding sources associated with investigators and infrastructure of individual CHARGE cohorts.

Disclosures

Dr Mora received institutional research grant support from Atherotech Diagnostics for research outside the current work, served as a consultant (modest) to Quest Diagnostics and Pfizer outside the current work. The other authors report no conflicts.

Supplemental Materials

Supplemental Methods
Supplemental Results
Supplemental Discussion
Supplemental Tables I–XI
Supplemental Figures I–XXII
Appendix I

REFERENCES

1. Wu L, Parhofer KG. Diabetic dyslipidemia. *Metabolism*. 2014;63:1469–1479. doi: 10.1016/j.metabol.2014.08.010
2. Rader DJ, Hovingh GK. HDL and cardiovascular disease. *Lancet*. 2014;384:618–625. doi: 10.1016/S0140-6736(14)61217-4
3. Navar AM. The Evolving Story of Triglycerides and Coronary Heart Disease Risk. *JAMA*. 2019;321:347–349. doi: 10.1001/jama.2018.20044
4. Goff DC, Lloyd-Jones DM, Bennett G, Coady S, D'Agostino RB, Gibbons R, Greenland P, Lackland DT, Levy D, O'Donnell CJ, et al. 2013 ACC/AHA Guideline on the Assessment of Cardiovascular Risk. *Circulation*. 2014;129:S49–S73. doi: 10.1161/01.cir.0000437741.48606.98
5. Grundy SM, Stone NJ, Bailey AL, Beam C, Birtcher KK, Blumenthal RS, Braun LT, de Ferranti S, Faiella-Tommasino J, Forman DE, et al. 2018 AHA/ACC/AACVPR/AAPA/ABC/ACPM/ADA/AGS/APhA/ASPC/NLA/PCNA Guideline on the Management of Blood Cholesterol. *Circulation*. 2019;73:3168–3209. doi: 10.1016/j.jacc.2018.11.002
6. Heller DA, de Faire U, Pedersen NL, Dahlén G, McClearn GE. Genetic and environmental influences on serum lipid levels in twins. *N Engl J Med*. 1993;328:1150–1156. doi: 10.1056/NEJM199304223281603
7. Abney M, McPeck MS, Ober C. Broad and narrow heritabilities of quantitative traits in a founder population. *Am J Hum Genet*. 2001;68:1302–1307. doi: 10.1086/320112
8. Teslovich TM, Musunuru K, Smith AV, Edmondson AC, Stylianou IM, Koseki M, Pirruccello JP, Ripatti S, Chasman DI, Willer CJ, et al. Biological and population relevance of 95 loci for blood lipids. *Nature*. 2010;466:707–713. doi: 10.1038/nature09270
9. Kathiresan S, Melander O, Guiducci C, Surti A, Burt NP, Rieder MJ, Cooper GM, Roos C, Voight BF, Havulinna AS, et al. Six new loci associated with blood low-density lipoprotein cholesterol, high-density lipoprotein cholesterol or triglycerides in humans. *Nat Genet*. 2008;40:189–197. doi: 10.1038/ng.75
10. Peloso GM, Demissie S, Collins D, Mirel DB, Gabriel SB, Cupples LA, Robins SJ, Schaefer EJ, Brousseau ME. Common genetic variation in multiple metabolic pathways influences susceptibility to low HDL-cholesterol and coronary heart disease. *J Lipid Res*. 2010;51:3524–3532. doi: 10.1194/jlr.P008268
11. Do R, Willer CJ, Schmidt EM, Sengupta S, Gao C, Peloso GM, Gustafsson S, Kanoni S, Ganna A, Chen J, et al. Common variants associated with plasma triglycerides and risk for coronary artery disease. *Nat Genet*. 2013;45:1345–1352. doi: 10.1038/ng.2795
12. Klarin D, Damrauer SM, Cho K, Sun YV, Teslovich TM, Honerlaw J, Gagnon DR, DuVall SL, Li J, Peloso GM, et al; Global Lipids Genetics Consortium; Myocardial Infarction Genetics (MIGen) Consortium; Geisinger-Regeneron DiscovEHR Collaboration; VA Million Veteran Program. Genetics of blood lipids among ~300,000 multi-ethnic participants of the Million Veteran Program. *Nat Genet*. 2018;50:1514–1523. doi: 10.1038/s41588-018-0222-9
13. Uyeda K, Repa JJ. Carbohydrate response element binding protein, ChREBP, a transcription factor coupling hepatic glucose utilization and lipid synthesis. *Cell Metab*. 2006;4:107–110. doi: 10.1016/j.cmet.2006.06.008
14. Fisher FM, Kim M, Doridot L, Cunniff JC, Parker TS, Levine DM, Hellerstein MK, Hudgins LC, Maratos-Flier E, Herman MA. A critical role for ChREBP-mediated FGF21 secretion in hepatic fructose metabolism. *Mol Metab*. 2017;6:14–21. doi: 10.1016/j.molmet.2016.11.008
15. Kooner JS, Chambers JC, Aguilar-Salinas CA, Hinds DA, Hyde CL, Warnes GR, Gómez Pérez FJ, Frazer KA, Elliott P, Scott J, et al. Genome-wide scan identifies variation in MLXIP associated with plasma triglycerides. *Nat Genet*. 2008;40:149–151. doi: 10.1038/ng.2007.61
16. Chasman DI, Paré G, Mora S, Hopewell JC, Peloso G, Clarke R, Cupples LA, Hamsten A, Kathiresan S, Mälarstig A, et al. Forty-three loci associated with plasma lipoprotein size, concentration, and cholesterol content in genome-wide analysis. *PLoS Genet*. 2009;5:e1000730. doi: 10.1371/journal.pgen.1000730
17. Postic C, Dentin R, Denechaud PD, Girard J. ChREBP, a transcriptional regulator of glucose and lipid metabolism. *Annu Rev Nutr*. 2007;27:179–192. doi: 10.1146/annurev.nutr.27.061406.093618
18. Erion DM, Popov V, Hsiao JJ, Vatner D, Mitchell K, Yonemitsu S, Nagai Y, Kahn M, Gillum MP, Dong J, et al. The role of the carbohydrate response element-binding protein in male fructose-fed rats. *Endocrinology*. 2013;154:36–44. doi: 10.1210/en.2012-1725
19. Kim M, Astapova II, Flier SN, Hannou SA, Doridot L, Sargsyan A, Kou HH, Fowler AJ, Liang G, Herman MA. Intestinal, but not hepatic, ChREBP is required for fructose tolerance. *JCI Insight*. 2017;2:96703. doi: 10.1172/jci.insight.96703
20. Linden AG, Li S, Choi HY, Fang F, Fukasawa M, Uyeda K, Hammer RE, Horton JD, Engelking LJ, Liang G. Interplay between ChREBP and SREBP-1c coordinates postprandial glycolysis and lipogenesis in livers of mice. *J Lipid Res*. 2018;59:475–487. doi: 10.1194/jlr.M081836
21. de Koning L, Malik VS, Kellogg MD, Rimm EB, Willett WC, Hu FB. Sweetened beverage consumption, incident coronary heart disease, and

- biomarkers of risk in men. *Circulation*. 2012;125:1735–41, S1. doi: 10.1161/CIRCULATIONAHA.111.067017
22. Welsh JA, Sharma A, Abramson JL, Vaccarino V, Gillespie C, Vos MB. Caloric sweetener consumption and dyslipidemia among US adults. *JAMA*. 2010;303:1490–1497. doi: 10.1001/jama.2010.1449
 23. Stanhope KL, Schwarz JM, Keim NL, Griffen SC, Bremer AA, Graham JL, Hatcher B, Cox CL, Dyachenko A, Zhang W, et al. Consuming fructose-sweetened, not glucose-sweetened, beverages increases visceral adiposity and lipids and decreases insulin sensitivity in overweight/obese humans. *J Clin Invest*. 2009;119:1322–1334. doi: 10.1172/JCI37385
 24. Haslam DE, Peloso GM, Herman MA, Dupuis J, Lichtenstein AH, Smith CE, McKeown NM. Beverage consumption and longitudinal changes in lipoprotein concentrations and incident dyslipidemia in US adults: the Framingham heart study. *J Am Heart Assoc*. 2020;9:e014083. doi: 10.1161/JAHA.119.014083
 25. de Koning L, Malik VS, Rimm EB, Willett WC, Hu FB. Sugar-sweetened and artificially sweetened beverage consumption and risk of type 2 diabetes in men. *Am J Clin Nutr*. 2011;93:1321–1327. doi: 10.3945/ajcn.110.007922
 26. Hu FB, Malik VS. Sugar-sweetened beverages and risk of obesity and type 2 diabetes: epidemiologic evidence. *Physiol Behav*. 2010;100:47–54. doi: 10.1016/j.physbeh.2010.01.036
 27. Imamura F, O'Connor L, Ye Z, Mursu J, Hayashino Y, Bhupathiraju SN, Forouhi NG. Consumption of sugar sweetened beverages, artificially sweetened beverages, and fruit juice and incidence of type 2 diabetes: systematic review, meta-analysis, and estimation of population attributable fraction. *BMJ*. 2015;351:h3576. doi: 10.1136/bmj.h3576
 28. Popkin BM, Hawkes C. Sweetening of the global diet, particularly beverages: patterns, trends, and policy responses. *Lancet Diabetes Endocrinol*. 2016;4:174–186. doi: 10.1016/S2213-8587(15)00419-2
 29. Singh GM, Micha R, Khatibzadeh S, Lim S, Ezzati M, Mozaffarian D; Global Burden of Diseases Nutrition and Chronic Diseases Expert Group (NutriCoDE). Estimated Global, Regional, and National Disease Burdens Related to Sugar-Sweetened Beverage Consumption in 2010. *Circulation*. 2015;132:639–666. doi: 10.1161/CIRCULATIONAHA.114.010636
 30. Dai H, Much AA, Maor E, Asher E, Younis A, Xu Y, Lu Y, Liu X, Shu J, Bragazzi NL. Global, regional, and national burden of ischaemic heart disease and its attributable risk factors, 1990–2017: results from the Global Burden of Disease Study 2017. *Eur Heart J Qual Care Clin Outcomes*. 2020 Oct 5: qcaa076. doi: 10.1093/ehjqcco/qcaa076
 31. Psaty BM, O'Donnell CJ, Gudnason V, Lunetta KL, Folsom AR, Rotter JJ, Uitterlinden AG, Harris TB, Witteman JC, Boerwinkle E; CHARGE Consortium. Cohorts for Heart and Aging Research in Genomic Epidemiology (CHARGE) Consortium: design of prospective meta-analyses of genome-wide association studies from 5 cohorts. *Circ Cardiovasc Genet*. 2009;2:73–80. doi: 10.1161/CIRCGENETICS.108.829747
 32. Sudlow C, Gallacher J, Allen N, Beral V, Burton P, Danesh J, Downey P, Elliott P, Green J, Landray M, et al. UK biobank: an open access resource for identifying the causes of a wide range of complex diseases of middle and old age. *PLoS Med*. 2015;12:e1001779. doi: 10.1371/journal.pmed.1001779
 33. Kheradpour P, Kellis M. Systematic discovery and characterization of regulatory motifs in ENCODE TF binding experiments. *Nucleic Acids Res*. 2014;42:2976–2987. doi: 10.1093/nar/gkt1249
 34. Haslam DE, McKeown NM, Herman MA, Lichtenstein AH, Dashti HS. Interactions between Genetics and Sugar-Sweetened Beverage Consumption on Health Outcomes: a Review of Gene–Diet Interaction Studies. *Front Endocrinol*. 2018;8:368. doi: 10.3389/fendo.2017.00368
 35. Sonestedt E, Hellstrand S, Drake I, Schulz CA, Ericson U, Hlebowicz J, Persson MM, Gullberg B, Hedblad B, Engström G, et al. Diet quality and change in blood lipids during 16 years of follow-up and their interaction with genetic risk for dyslipidemia. *Nutrients*. 2016;8:E274. doi: 10.3390/nu8050274
 36. Qi Q, Chu AY, Kang JH, Jensen MK, Curhan GC, Pasquale LR, Ridker PM, Hunter DJ, Willett WC, Rimm EB, et al. Sugar-sweetened beverages and genetic risk of obesity. *N Engl J Med*. 2012;367:1387–1396. doi: 10.1056/NEJMoa1203039
 37. McKeown NM, Dashti HS, Ma J, Haslam DE, Kieffe-de Jong JC, Smith CE, Tanaka T, Graff M, Lemaitre RN, Rybin D, et al. Sugar-sweetened beverage intake associations with fasting glucose and insulin concentrations are not modified by selected genetic variants in a ChREBP-FGF21 pathway: a meta-analysis. *Diabetologia*. 2018;61:317–330. doi: 10.1007/s00125-017-4475-0
 38. Justice AE, Winkler TW, Feitosa MF, Graff M, Fisher VA, Young K, Barata L, Deng X, Czajkowski J, Hadley D, et al. Genome-wide meta-analysis of 241,258 adults accounting for smoking behaviour identifies novel loci for obesity traits. *Nat Commun*. 2017;8:14977. doi: 10.1038/ncomms14977
 39. Graff M, Scott RA, Justice AE, Young KL, Feitosa MF, Barata L, Winkler TW, Chu AY, Mahajan A, Hadley D, et al; CHARGE Consortium; EPIC-InterAct Consortium; PAGE Consortium. Correction: Genome-wide physical activity interactions in adiposity - A meta-analysis of 200,452 adults. *PLoS Genet*. 2017;13:e1006972. doi: 10.1371/journal.pgen.1006972
 40. Pu J, Romanelli R, Zhao B, Azar KM, Hastings KG, Nimbal V, Fortmann SP, Palaniappan LP. Dyslipidemia in special ethnic populations. *Cardiol Clin*. 2015;33:325–333. doi: 10.1016/j.ccl.2015.01.005
 41. Han E, Powell LM. Consumption patterns of sugar-sweetened beverages in the United States. *J Acad Nutr Diet*. 2013;113:43–53. doi: 10.1016/j.jand.2012.09.016
 42. Becker BJ, Wu MJ. The synthesis of regression slopes in meta-analysis. *Stat Sci*. 2007;22:414–429.
 43. Cochran WG. The combination of estimates from different experiments. *Biometrics*. 1954;10:101–129.
 44. Higgins JP, Thompson SG. Quantifying heterogeneity in a meta-analysis. *Stat Med*. 2002;21:1539–1558. doi: 10.1002/sim.1186
 45. Yang J, Ferreira T, Morris AP, Medland SE, Madden PA, Heath AC, Martin NG, Montgomery GW, Weedon MN, Loos RJ, et al; Genetic Investigation of Anthropometric Traits (GIANT) Consortium; DIAbetes Genetics Replication And Meta-analysis (DIAGRAM) Consortium. Conditional and joint multiple-SNP analysis of GWAS summary statistics identifies additional variants influencing complex traits. *Nat Genet*. 2012;44:369–75, S1. doi: 10.1038/ng.2213
 46. Willer CJ, Li Y, Abecasis GR. METAL: fast and efficient meta-analysis of genome-wide association scans. *Bioinformatics*. 2010;26:2190–2191. doi: 10.1093/bioinformatics/btq340
 47. Winkler TW, Justice AE, Cupples LA, Kronenberg F, Kutalik Z, Heid IM; GIANT consortium. Approaches to detect genetic effects that differ between two strata in genome-wide meta-analyses: recommendations based on a systematic evaluation. *PLoS One*. 2017;12:e0181038. doi: 10.1371/journal.pone.0181038
 48. Voorman A, Lumley T, McKnight B, Rice K. Behavior of QQ-Plots and Genomic Control in Studies of Gene-Environment Interaction. *PLoS One*. 2011;6:e19416. doi: 10.1371/journal.pone.0019416
 49. Gao X. Multiple testing corrections for imputed SNPs. *Genet Epidemiol*. 2011;35:154–158. doi: 10.1002/gepi.20563
 50. 1000 Genomes Project Consortium. A global reference for human genetic variation. *Nature*. 2015;526:68. doi: 10.1038/nature15393
 51. Purcell S, Neale B, Todd-Brown K, Thomas L, Ferreira MA, Bender D, Maller J, Sklar P, de Bakker PI, Daly MJ, et al. PLINK: a tool set for whole-genome association and population-based linkage analyses. *Am J Hum Genet*. 2007;81:559–575. doi: 10.1086/519795
 52. Zhou W, Nielsen JB, Fritsche LG, Dey R, Gabrielsen ME, Wolford BN, LeFaive J, VandeHaar P, Gagliano SA, Gifford A, et al. Efficiently controlling for case-control imbalance and sample relatedness in large-scale genetic association studies. *Nat Genet*. 2018;50:1335–1341. doi: 10.1038/s41588-018-0184-y
 53. Hert KA, Fisk PS II, Rhee YS, Brunt AR. Decreased consumption of sugar-sweetened beverages improved selected biomarkers of chronic disease risk among US adults: 1999 to 2010. *Nutr Res*. 2014;34:58–65. doi: 10.1016/j.nutres.2013.10.005
 54. Duffey KJ, Gordon-Larsen P, Steffen LM, Jacobs DR Jr, Popkin BM. Drinking caloric beverages increases the risk of adverse cardiometabolic outcomes in the Coronary Artery Risk Development in Young Adults (CARDIA) Study. *Am J Clin Nutr*. 2010;92:954–959. doi: 10.3945/ajcn.2010.29478
 55. Dhingra R, Sullivan L, Jacques PF, Wang TJ, Fox CS, Meigs JB, D'Agostino RB, Gaziano JM, Vasan RS. Soft drink consumption and risk of developing cardiometabolic risk factors and the metabolic syndrome in middle-aged adults in the community. *Circulation*. 2007;116:480–488. doi: 10.1161/CIRCULATIONAHA.107.689935
 56. Yu Z, Ley SH, Sun Q, Hu FB, Malik VS. Cross-sectional association between sugar-sweetened beverage intake and cardiometabolic biomarkers in US women. *Br J Nutr*. 2018;119:570–580. doi: 10.1017/S0007114517003841
 57. Te Morenga LA, Howatson AJ, Jones RM, Mann J. Dietary sugars and cardiometabolic risk: systematic review and meta-analyses of randomized controlled trials of the effects on blood pressure and lipids. *Am J Clin Nutr*. 2014;100:65–79. doi: 10.3945/ajcn.113.081521
 58. Talmud PJ, Drenos F, Shah S, Shah T, Palmieri J, Verzilli C, Gaunt TR, Pallas J, Loring R, Li K, et al; ASCOT investigators; NORDIL investigators; BRIGHT Consortium. Gene-centric association signals for lipids and

- apolipoproteins identified via the HumanCVD BeadChip. *Am J Hum Genet.* 2009;85:628–642. doi: 10.1016/j.ajhg.2009.10.014
59. The Atherosclerosis Risk in Communities (ARIC) Study: design and objectives. The ARIC investigators. *Am J Epidemiol.* 1989;129:687–702.
 60. Fried LP, Borhani NO, Enright P, Furberg CD, Gardin JM, Kronmal RA, Kuller LH, Manolio TA, Mittelmark MB, Newman A, et al. The cardiovascular health study: design and rationale. *Ann Epidemiol.* 1991;1:263–276. doi: 10.1016/1047-2797(91)90005-w
 61. Dawber TR, Kannel WB, Lyell LP. An approach to longitudinal studies in a community: the Framingham Study. *Ann N Y Acad Sci.* 1963;107:539–556. doi: 10.1111/j.1749-6632.1963.tb13299.x
 62. Feinleib M, Kannel WB, Garrison RJ, McNamara PM, Castelli WP. The Framingham offspring study. Design and preliminary data. *Prev Med.* 1975;4:518–525. doi: 10.1016/0091-7435(75)90037-7
 63. Splansky GL, Corey D, Yang Q, Atwood LD, Cupples LA, Benjamin EJ, D'Agostino RB Sr, Fox CS, Larson MG, Murabito JM, et al. The Third Generation Cohort of the National Heart, Lung, and Blood Institute's Framingham Heart Study: design, recruitment, and initial examination. *Am J Epidemiol.* 2007;165:1328–1335. doi: 10.1093/aje/kwm021
 64. Bild DE, Bluemke DA, Burke GL, Detrano R, Diez Roux AV, Folsom AR, Greenland P, Jacob DR Jr, Kronmal R, Liu K, et al. Multi-Ethnic Study of Atherosclerosis: objectives and design. *Am J Epidemiol.* 2002;156:871–881. doi: 10.1093/aje/kwf113
 65. de Mutsert R, den Heijer M, Rabelink TJ, Smit JWA, Romijn JA, Jukema JW, de Roos A, Cobbaert CM, Kloppenburg M, le Cessie S, et al. The Netherlands Epidemiology of Obesity (NEO) study: study design and data collection. *Eur J Epidemiol.* 2013;28:513–523. doi: 10.1007/s10654-013-9801-3
 66. Sudlow C, Gallacher J, Allen N, Beral V, Burton P, Danesh J, Downey P, Elliott P, Green J, Landray M, et al. UK biobank: an open access resource for identifying the causes of a wide range of complex diseases of middle and old age. *PLoS Med.* 2015;12:e1001779. doi: 10.1371/journal.pmed.1001779
 67. Newnham JP, Evans SF, Michael CA, Stanley FJ, Landau LI. Effects of frequent ultrasound during pregnancy: a randomised controlled trial. *Lancet.* 1993;342:887–891. doi: 10.1016/0140-6736(93)91944-h
 68. Ikram MA, Brusselle G, Ghanbari M, Goedegebure A, Ikram MK, Kavousi M, Kieboom BCT, Klaver CCW, de Kneegt RJ, Luik AI, et al. Objectives, design and main findings until 2020 from the Rotterdam Study. *Eur J Epidemiol.* 2020;35:483–517. doi: 10.1007/s10654-020-00640-5
 69. Ridker PM, Chasman DI, Zee RY, Parker A, Rose L, Cook NR, Buring JE; Women's Genome Health Study Working Group. Rationale, design, and methodology of the Women's Genome Health Study: a genome-wide association study of more than 25,000 initially healthy American women. *Clin Chem.* 2008;54:249–255. doi: 10.1373/clinchem.2007.099366
 70. Design of the Women's Health Initiative clinical trial and observational study. The Women's Health Initiative Study Group. *Control Clin Trials.* 1998;19:61–109. doi: 10.1016/s0197-2456(97)00078-0
 71. Raitakari OT, Juonala M, Rönkämaa T, Keltikangas-Järvinen L, Räsänen L, Pietikäinen M, Hutri-Kähönen N, Taittonen L, Jokinen E, Marniemi J, et al. Cohort profile: the cardiovascular risk in Young Finns Study. *Int J Epidemiol.* 2008;37:1220–1226. doi: 10.1093/ije/dym225
 72. Stevens J, Metcalf PA, Dennis BH, Tell GS, Shimakawa T, Folsom AR. Reliability of a food frequency questionnaire by ethnicity, gender, age and education. *Nutr Res.* 1996;16:735–745.
 73. Willett WC, Sampson L, Stampfer MJ, Rosner B, Bain C, Witschi J, Hennekens CH, Speizer FE. Reproducibility and validity of a semiquantitative food frequency questionnaire. *Am J Epidemiol.* 1985;122:51–65. doi: 10.1093/oxfordjournals.aje.a114086
 74. Kumanyika S, Tell GS, Fried L, Martel JK, Chinchilli VM. Picture-sort method for administering a food frequency questionnaire to older adults. *J Am Diet Assoc.* 1996;96:137–144. doi: 10.1016/S0002-8223(96)00042-9
 75. Bingham SA, Gill C, Welch A, Day K, Cassidy A, Khaw KT, Sneyd MJ, Key TJ, Roe L, Day NE. Comparison of dietary assessment methods in nutritional epidemiology: weighed records v. 24 h recalls, food-frequency questionnaires and estimated-diet records. *Br J Nutr.* 1994;72:619–643. doi: 10.1079/bjn19940064
 76. Bingham SA, Gill C, Welch A, Cassidy A, Runswick SA, Oakes S, Lubin R, Thurnham DI, Key TJ, Roe L, et al. Validation of dietary assessment methods in the UK arm of EPIC using weighed records, and 24-hour urinary nitrogen and potassium and serum vitamin C and carotenoids as biomarkers. *Int J Epidemiol.* 1997;26(suppl 1):S137–S151. doi: 10.1093/ije/26.suppl_1.s137
 77. Rimm EB, Giovannucci EL, Stampfer MJ, Colditz GA, Litin LB, Willett WC. Reproducibility and validity of an expanded self-administered semi-quantitative food frequency questionnaire among male health professionals. *Am J Epidemiol.* 1992;135:1114–26; discussion 1127. doi: 10.1093/oxfordjournals.aje.a116211
 78. Mayer-Davis EJ, Vitolins MZ, Carmichael SL, Hemphill S, Tsaroucha G, Rushing J, Levin S. Validity and reproducibility of a food frequency interview in a Multi-Cultural Epidemiology Study. *Ann Epidemiol.* 1999;9:314–324. doi: 10.1016/s1047-2797(98)00070-2
 79. Verkleij-Hagoort AC, de Vries JH, Steegers MP, Lindemans J, Ursem NT, Steegers-Theunissen RP. Validation of the assessment of folate and vitamin B12 intake in women of reproductive age: the method of triads. *Eur J Clin Nutr.* 2007;61:610–615. doi: 10.1038/sj.ejcn.1602581
 80. Voortman T, Kieft-de Jong JC, Ikram MA, Stricker BH, van Rooij FJA, Lahousse L, Tiemeier H, Brusselle GG, Franco OH, Schoufou JD. Adherence to the 2015 Dutch dietary guidelines and risk of non-communicable diseases and mortality in the Rotterdam Study. *Eur J Epidemiol.* 2017;32:993–1005. doi: 10.1007/s10654-017-0295-2
 81. Klipstein-Grobusch K, den Breeijen JH, Goldbohm RA, Geleijnse JM, Hofman A, Grobbee DE, Witteman JC. Dietary assessment in the elderly: validation of a semiquantitative food frequency questionnaire. *Eur J Clin Nutr.* 1998;52:588–596. doi: 10.1038/sj.ejcn.1600611
 82. Goldbohm RA, van den Brandt PA, Brants HA, van't Veer P, Al M, Sturmans F, Hermus RJ. Validation of a dietary questionnaire used in a large-scale prospective cohort study on diet and cancer. *Eur J Clin Nutr.* 1994;48:253–265.
 83. Feunekes GI, Van Staveren WA, De Vries JH, Burema J, Hautvast JG. Relative and biomarker-based validity of a food-frequency questionnaire estimating intake of fats and cholesterol. *Am J Clin Nutr.* 1993;58:489–496. doi: 10.1093/ajcn/58.4.489
 84. Paalanen L, Männistö S, Virtanen MJ, Knekt P, Räsänen L, Montonen J, Pietinen P. Validity of a food frequency questionnaire varied by age and body mass index. *J Clin Epidemiol.* 2006;59:994–1001. doi: 10.1016/j.jclinepi.2006.01.002
 85. Liu B, Young H, Crowe FL, Benson VS, Spencer EA, Key TJ, Appleby PN, Beral V. Development and evaluation of the Oxford WebQ, a low-cost, web-based method for assessment of previous 24 h dietary intakes in large-scale prospective studies. *Public Health Nutr.* 2011;14:1998–2005. doi: 10.1017/S1368980011000942
 86. McCance RA, Widdowson EM, Institute of Food Research (Great Britain), Public Health England, & Royal Society of Chemistry (Great Britain). *McCance and Widdowson's The Composition of Foods.* 2015
 87. Bycroft C, Freeman C, Petkova D, Band G, Elliott LT, Sharp K, Motyer A, Vukcevic D, Delaneau O, O'Connell J, et al. The UK Biobank resource with deep phenotyping and genomic data. *Nature.* 2018;562:203–209. doi: 10.1038/s41586-018-0579-z
 88. Brage S, Westgate K, Franks PW, Stegle O, Wright A, Ekelund U, Wareham NJ. Estimation of free-living energy expenditure by heart rate and movement sensing: a doubly-labelled water study. *PLoS One.* 2015;10:e0137206. doi: 10.1371/journal.pone.0137206
 89. Kannel WB, Sorlie P. Some health benefits of physical activity. The Framingham Study. *Arch Intern Med.* 1979;139:857–861.
 90. Machiela MJ, Chanock SJ. LDlink: a web-based application for exploring population-specific haplotype structure and linking correlated alleles of possible functional variants. *Bioinformatics.* 2015;31:3555–3557. doi: 10.1093/bioinformatics/btv402