



Universiteit
Leiden
The Netherlands

Preoperative risk factors for major postoperative complications after complex gastrointestinal cancer surgery: a systematic review

Kooten, R.T. van; Bahadoer, R.R.; Peeters, K.C.M.J.; Hoeksema, J.H.L.; Steyerberg, E.W.; Hartgrink, H.H.; ... ; Tollenaar, R.A.E.M.

Citation

Kooten, R. T. van, Bahadoer, R. R., Peeters, K. C. M. J., Hoeksema, J. H. L., Steyerberg, E. W., Hartgrink, H. H., ... Tollenaar, R. A. E. M. (2021). Preoperative risk factors for major postoperative complications after complex gastrointestinal cancer surgery: a systematic review. *Ejso - European Journal Of Surgical Oncology*, 47(12), 3049-3058.
doi:10.1016/j.ejso.2021.07.021

Version: Publisher's Version

License: [Creative Commons CC BY 4.0 license](https://creativecommons.org/licenses/by/4.0/)

Downloaded from: <https://hdl.handle.net/1887/3276844>

Note: To cite this publication please use the final published version (if applicable).



Contents lists available at ScienceDirect

European Journal of Surgical Oncology

journal homepage: www.ejso.com

Preoperative risk factors for major postoperative complications after complex gastrointestinal cancer surgery: A systematic review



Robert T. van Kooten^{a,*}, Renu R. Bahadoer^a, Koen C.M.J. Peeters^a, Jetty H.L. Hoeksema^a, Ewout W. Steyerberg^b, Henk H. Hartgrink^a, Cornelis J.H. van de Velde^a, Michel W.J.M. Wouters^{b,c,1}, Rob A.E.M. Tollenaar^{a,1}

^a Department of Surgery, Leiden University Medical Center, Leiden, the Netherlands

^b Department of Biomedical Data Sciences, Leiden University Medical Center, Leiden, the Netherlands

^c Department of Surgery, Netherlands Cancer Institute-Antoni van Leeuwenhoek, Amsterdam, the Netherlands

ARTICLE INFO

Article history:

Accepted 24 July 2021

Available online 28 July 2021

Keywords:

Gastrointestinal surgery

Cancer

Complications

Risk factors

Predictive factors

Mortality

Systematic review

ABSTRACT

Patients undergoing complex gastrointestinal surgery are at high risk of major postoperative complications (e.g., anastomotic leakage, sepsis), classified as Clavien-Dindo (CD) \geq IIIa. Identification of preoperative risk factors can lead to the identification of high-risk patients. These risk factors can also be used to design personalized perioperative care. This systematic review focuses on the identification of these factors. The Medline and Embase databases were searched for prospective, retrospective cohort studies and randomized controlled trials investigating the effect of risk factors on the occurrence of major postoperative complications and/or mortality after complex gastrointestinal cancer surgery. Risk of bias was assessed using the Quality in Prognostic Studies tool. The level of evidence was graded based on the number of studies reporting a significant association between risk factors and major complications. A total of 207 eligible studies were retrieved, identifying 33 risk factors for major postoperative complications and 13 preoperative laboratory results associated with postoperative complications. The present systematic review provides a comprehensive overview of preoperative risk factors associated with major postoperative complications. A wide range of risk factors are amenable to actions in perioperative care and prehabilitation programs, which may lead to improved outcomes for high-risk patients. Additionally, the knowledge of this study is important for benchmarking surgical outcomes.

© 2021 The Author(s). Published by Elsevier Ltd. This is an open access article under the CC BY license (<http://creativecommons.org/licenses/by/4.0/>).

1. Introduction

Postoperative complications can occur after every type of surgery, and can lead to increased morbidity and mortality, as well as increased hospital length of stay and healthcare costs [1]. Complex gastrointestinal surgery (e.g., colorectal, gastric and esophagus resections) is associated with high complication rates [2,3]. A large number of studies have focused on reducing complications by improving surgical techniques; however, relatively few have

addressed improving perioperative care. The latter contributes largely to the avoidance of complications and is responsible for shorter recovery time after surgery, together with less morbidity and increased survival. Some studies have suggested that perioperative care more accurately dictates outcomes and postoperative complications than surgery itself [4]. Perioperative care is currently being standardized in the form of enhanced recovery after surgery (ERAS) protocols, which provide guidelines for improved perioperative care. A meta-analysis by Vardhan et al. showed that the use of ERAS protocols reduces the rate of complications following major abdominal surgery by up to 50 % [5]. The period of time before admission is used for screening for medical conditions that can negatively alter the surgical outcome (e.g., smoking and malnutrition). This can be particularly beneficial when the screening focuses on modifiable risk factors, which subsequently can be (partially) reversed (e.g., physical therapy, nutritional support).

Reduction of postoperative complications is also important in

Abbreviations: ACS NSQIP, American College of Surgeons National Surgical Quality Improvement Program; CD, Clavien-Dindo; CRP, C-Reactive Protein; DICA, Dutch Institute for Clinical Auditing; ERAS, Enhanced Recovery After Surgery.

* Corresponding author. Department of Surgery Leiden University Medical Center Albinusdreef 2, J10-71 2333 ZA, Leiden, the Netherlands.

E-mail address: r.t.van.kooten@lumc.nl (R.T. van Kooten).

¹ Senior authors, contributed equally to the work.

<https://doi.org/10.1016/j.ejso.2021.07.021>

0748-7983/© 2021 The Author(s). Published by Elsevier Ltd. This is an open access article under the CC BY license (<http://creativecommons.org/licenses/by/4.0/>).

relation to long-term outcomes, especially in patients with cancer. The severity of complications is often graded using the Clavien-Dindo (CD) classification, a therapy-based complication severity classification [6]. It has been demonstrated that major complications ($CD \geq IIIa$) are associated with postponement of adjuvant therapy and worse oncological outcomes, like local recurrences and shortened recurrence-free survival [7,8]. The majority of studies addressing the prevention of postoperative complications have concentrated on operation-specific risk factors (e.g., anastomosis technique). However, for complex surgeries, the standard perioperative care protocols may not be adequate to reduce major complications for every individual patient.

Additionally, identifying risk factors for adverse outcomes is important for case-mix correction in benchmarking quality of care in nation-wide clinical auditing and surgical improvement programs, such as the Dutch Institute of Clinical Auditing (DICA) and American College of Surgeons National Surgical Quality Improvement Program (ACS NSQIP) [9,10].

This review focuses on the identification of preoperative risk factors for major postoperative complications ($CD \geq IIIa$) after major abdominal surgery with the construction of an intestinal anastomosis, which includes esophagectomy, gastrectomy, and colorectal surgery. Since, these types of surgery have technical similarities and are all high risk procedures. Furthermore, this study aims to identify the strengths and possible improvements in ERAS protocols.

2. Methods

The study protocol for this systematic review was registered with the PROSPERO database (CRD42020198812). This review adhered to the Preferred Reporting Items for Systematic Reviews and Meta-Analyses guidelines (PRISMA) (Supplementary File A).

2.1. Criteria for study eligibility

To evaluate the effect of preoperative factors on the incidence of major postoperative complications, studies were selected based on the type of surgery. Only studies addressing complex gastrointestinal cancer surgery (e.g., esophagectomy, gastrectomy, and colectomy), including the construction of an intestinal anastomosis, were selected. As an outcome, a study was required to report on the associations between major complications and an independent preoperative factor. Major complications were classified as $CD \geq IIIa$ or severe complications that were classified as such (e.g., anastomotic leakage, endoscopic intervention) [6]. Retrospective, prospective cohort studies, and randomized-controlled trials with full-text articles published in English or Dutch were assessed for eligibility. Case reports and case series (<40 patients) were excluded. Only studies including adult patients (≥ 18 years of age) were selected, and animal studies were excluded.

2.2. Search method

The Medline and Embase electronic databases were searched to identify all relevant publications. Search terms included those from MeSH in PubMed and EMtree in Embase, as well as free text terms (Supplementary File B). Reference lists of identified studies will be checked for additional relevant studies. Included studies were restricted to those that were published between January 2005 and July 2021. Authors were contacted in case of full-text unavailability.

2.3. Study selection

Assessment of eligibility was performed independently by RB

and RvK. Any disagreement regarding eligibility was resolved by discussion with MW as an arbitrator when necessary. The initial screening was based on title and abstract. Full texts were independently screened by two authors (RB and RvK). Again, disagreement was resolved by discussion with MW, who acted as an arbitrator. Study selection was performed using Endnote X9 (Clarivate Analytics, Philadelphia, PA, USA) and Rayyan QCRI (a mobile web app for systematic reviews).

2.4. Assessment of risk of bias

All eligible studies were independently assessed for potential risk of bias by RB and RvK, using the Quality in Prognostic Studies (QUIPS) tool for classification of prognostic factor studies [11]. Discrepancies were resolved by discussion, with MW as an arbitrator when necessary. The risk of bias in clinical trials was assessed in the following domains: study participation, study attrition, prognostic factor measurement, outcome measurement, adjustment bias, and statistical analysis bias. Each domain was graded as high, low, or unclear. The results of risk of bias screening are summarized in Supplementary File C.

2.5. Data extraction and management

Data extraction was performed by RvK, and subsequently verified by RB using a predefined, standardized form designed by RB and RvK. Any discrepancies were resolved through discussion.

2.6. Grading the level of evidence

The level of evidence regarding the association between a risk factor and major complications ($CD \geq IIIa$) was scored using a grading system (Table 1) [12]. The score resulted from the number of studies conducting a multivariable analysis of the association and percentage of statistically significant results of these analyses.

3. Results

The literature search retrieved 207 eligible studies (Fig. 1), all of which used an observational study design. An overview of the results reported in these studies on preoperative risk factors associated with major complications (i.e., $CD \geq IIIa$) after major gastrointestinal cancer surgery is shown in Table 2, together with the type of surgery (lower or upper gastrointestinal surgery), and the level of evidence graded according to Table 1. The fourth column reports the number of studies, including the risk factor, in multivariable analysis and the percentage of significant results. This section is divided into six subsections: patient characteristics, comorbidities, intoxication, nutritional indicators, disease-related factors, and neoadjuvant therapy-related factors.

3.1. Patient characteristics

3.1.1. Age and frailty

Age is an important risk factor. Many studies reported an independent association between older age and major complications and mortality (Table 2). The elderly are believed to exhibit less healing capacity, which leads to more postoperative complications [13,14]. Another term reported in studies is “frailty”, which is a physiological state of cumulative deficits (e.g., advanced age, poor physical performance), which render patients more susceptible to major complications [15]. In a large population-based retrospective cohort, Sparreboom et al. reported an association between frailty and anastomotic leakage [2]. Along with frailty, functional status, and activities of daily living dependency have demonstrated an

Table 1
Grading the level of evidence adapted from the grading score used by Lagarde et al. [12].

Level of evidence	Criteria
None	No significant evidence
Minor	Evidence significant from multivariable analysis from one article
Considerable	Evidence significant from multivariable analysis in three or less articles and/or in less than 50 % of the articles describing this risk factor
Strong	Evidence significant from multivariable analysis in more than three articles and in more than 50 % of all articles describing this risk factor
Very strong	Evidence significant from multivariable analysis in ten or more articles and in more than 70 % of all articles describing this risk factor

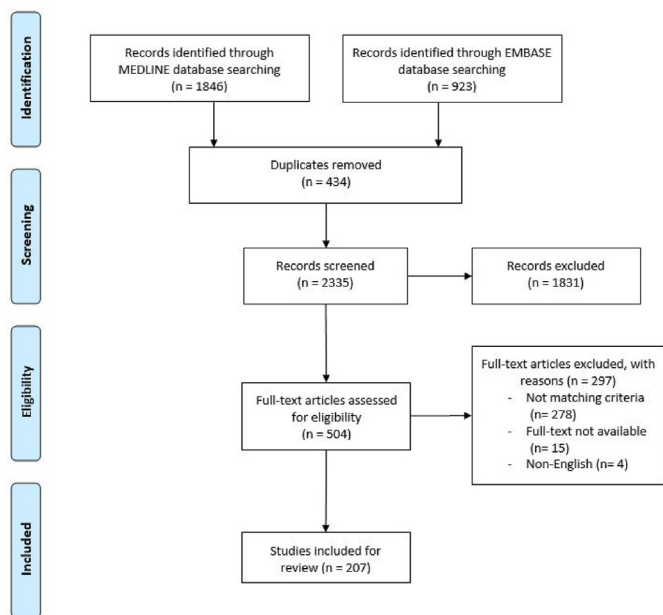


Fig. 1. PRISMA flowchart of study selection.

association with postoperative complications and mortality (Table 2).

3.1.2. Male sex

A wide variety of studies have confirmed that male sex is a risk factor for major postoperative complications. Several theories have been proposed to address this issue. Historically, the incidence of smoking and alcohol consumption in the male population has been higher. However, these confounding variables have not been measured in many studies and, therefore, their effect on males may be overestimated [16]. Another theory is that differences in cortisol-induced sex hormones change after surgically induced stress, which could render males more susceptible to postoperative complications [17]. A third theory is that the narrower pelvis of male patients can make surgery for tumors located in this region technically more difficult [2,14].

3.1.3. American society of anesthesiologists score

One of the most studied risk indicators in the context of predicting postoperative complications is the American Society of Anesthesiologists (ASA) score. Multiple studies found an independent association between ASA score and a higher incidence of anastomotic leakage and major complications [2,18,19]. Furthermore, the ASA score is a reliable predictor of 30-day mortality (Table 2).

3.2. Preoperative inflammatory biomarkers

Several studies described an association between elevated levels

of preoperative inflammatory biomarkers (e.g., white blood cell count, C-reactive protein [CRP]) and postoperative complications (Table 2). Similarly, the neutrophil-to-lymphocyte ratio, a proxy measure of inflammation status in the body, is independently associated with an increased risk for major complications (Table 2). The association between preoperative inflammation and complications, however, is not yet fully understood.

Serum albumin is a negative acute-phase protein. It decreases during inflammation due to increased capillary leakage [20]. It is also known as a nutritional biomarker reflecting malnutrition (Section 3.4.1). In the Glasgow Prognostic Score, an inflammation-based prognostic score for cancer prognosis, albumin and CRP are combined to predict perioperative complications [21]. Similarly, You et al. proposed the albumin/fibrinogen ratio as a predictor of major complications (Table 2). Fibrinogen is an essential protein in the coagulation cascade as well as an acute-phase reaction protein in the response to systemic inflammation [22].

3.3. Comorbidities

Patients with ≥ 1 comorbidities and those using ≥ 5 drugs per day are more susceptible to complications [23]. Several studies have demonstrated that heart failure, hypertension, and renal insufficiency are independently associated with major complications and anastomotic leakage (Table 2). Vascular disease, particularly arterial calcifications, is an important risk factor for major complications, especially anastomotic leakage (Table 2). Furthermore, the relationship between major complications and diabetes is well understood, whereas hyperglycemia induces microvascular damage, yielding a reduced capacity for anastomotic healing [24] (Table 2).

3.4. Intoxication

3.4.1. Smoking

A history of smoking is a risk factor for the occurrence of postoperative complications after major abdominal surgery (Table 2). In a large retrospective cohort study, Sharma et al. estimated the increased risk for major postoperative complications and mortality after smoking to be 30 % [16]. Quan et al. reported that the number of pack-years significantly influenced the risk for major complications [25]. Smoking is believed to induce microvascular damage, leading to decreased healing ability of the anastomosis, thereby leading to an increased rate of anastomotic leakage [26].

3.4.2. Alcohol consumption

Several studies have shown that habitual use of alcohol (≥ 3 units per day) increases the risk for postoperative complications (Table 2). Alcohol causes alcohol-induced liver and pancreatic disorders, as well as impaired immune capacity, hemostasis, and surgical stress response [27,28]. Alcohol cessation before elective surgery significantly decreased postoperative complications [27,28].

Table 2

This table represents all pre-operative risk factors for major complications (Clavien-Dindo (CD) \geq IIIa) and mortality described in literature References used in this table are listed in [Supplementary File D](#). BMI = body-mass index; CD= Clavien-Dindo; HbA1c = glycated hemoglobin; Low = lower GI surgery; Up = upper GI surgery. *30-day mortality or in-hospital mortality.

Preoperative risk factors	Type of complications	Type of surgery (Up/Low)	Number of articles favoring (%)	Level of evidence	Reference(s)
Patient characteristics					
Age	Anastomotic leakage	Up & Low	10/22 (45)	Considerable	[2, 26, 66, 88–157]
	Intra-abdominal infection	Up	2/2 (100)	Considerable	
	Reoperation	Up & Low	2/2 (100)	Considerable	
	Venous thrombo-embolism	Up & Low	2/3 (67)	Considerable	
	Mortality*	Up & Low	17/20 (85)	Very strong	
Male gender	CD \geq IIIa	Up & Low	18/29 (62)	Strong	[2,14,26,88,89,92,95,97,102,104,105,107,111,112,114,119 –124,126,128,129,133,137–140,146,149,152,156,158–190]
	Anastomotic leakage	Up & Low	27/34 (79)	Very Strong	
	Pancreatic fistula	Up	1/2 (50)	Minor	
	Postoperative hemorrhage	Low	1/1 (100)	Minor	
	Intra-abdominal infection	Up & Low	3/5 (60)	Considerable	
	Reoperation	Up	1/1 (100)	Minor	
	Venous thrombo-embolism	Up	1/1 (100)	Minor	
	Mortality*	Low	5/6 (83)	Strong	
	CD \geq IIIa	Up & Low	9/17 (53)	Strong	
	American Society of Anesthesiologists (ASA) score	Anastomotic leakage	Up & Low	10/19 (53)	
Reintervention		Low	1/1 (100)	Minor	
Mortality*		Up & Low	8/10 (80)	Strong	
CD \geq IIIa		Up & Low	6/15 (40)	Considerable	
Mortality*		Up & Low	1/2 (50)	Minor	
Physical fitness	Anastomotic leakage	Low	1/2 (50)	Minor	[138, 160, 197, 198]
	CD \geq IIIa	Up & Low	2/2 (100)	Considerable	
Frailty	Mortality	Up	2/2 (100)	Considerable	[92, 138, 153, 199]
	CD \geq IIIa	Up & Low	2/3 (67)	Considerable	
Comorbidity					
Comorbidity	Anastomotic leakage	Up & Low	6/8 (75)	Strong	[2,105–107,129,133,146,147,149,152,162,168,200–203]
	Reoperation	Up & Low	2/2 (100)	Considerable	
	Respiratory failure	Up	1/1 (100)	Minor	
	Mortality*	Up & Low	3/3 (100)	Considerable	
	CD \geq IIIa	Up	3/4 (75)	Considerable	
Vascular comorbidity Hypertension	Anastomotic leakage	Up & Low	6/6 (100)	Strong	[136, 192, 193, 204–206]
	Anastomotic leakage	Up & Low	2/3 (67)	Considerable	
	CD \geq IIIa	Up	3/3 (100)	Considerable	
Pulmonary comorbidity	Anastomotic leakage	Up & Low	4/8 (50)	Strong	[100–102,104,114,137,140,141,154,155,170,189,190,194,202,210–214]
	Acute respiratory distress syndrome (ARDS)	Up	1/1 (100)	Minor	
	Respiratory failure	Up	1/2 (50)	Minor	
	Mortality*	Up & Low	5/5 (100)	Strong	
	CD \geq III	Up & Low	4/6 (67)	Strong	
Cardiac comorbidity	Anastomotic leakage	Up & Low	8/12 (75)	Strong	[100,102,104,114,117,121,131,135 –137,154,155,158,159,170,185,194,209,210,212,213,215–219]
	Duodenal stump fistula	Up	1/1 (100)	Minor	
	Respiratory failure	Up	1/1 (100)	Minor	
	Venous thrombo-embolism	Up	1/1 (100)	Minor	
	Mortality*	Up & Low	4/5 (80)	Strong	
Chronic hepatic disease	CD \geq IIIa	Up & Low	8/11 (73)	Strong	[102, 135, 140, 181, 215, 220, 221]
	Anastomotic leakage	Up	1/1 (100)	Minor	
	Duodenal stump fistula	Up	1/1 (100)	Minor	
	Intra-abdominal infection	Up	1/1 (100)	Minor	
	Mortality*	Up & Low	2/2 (100)	Considerable	
Chronic kidney failure	CD \geq IIIa	Up	1/1 (100)	Minor	[98, 102, 193, 209]
	Anastomotic leakage	Up	2/3 (67)	Considerable	
	Mortality*	Low	1/1 (100)	Minor	
Diabetes	Anastomotic leakage	Up & Low	9/18 (50)	Considerable	[26, 98, 104, 140, 158, 176, 182, 186, 194, 207, 208, 210, 212, 221–226]
	CD IV-V	Up	1/2 (50)	Minor	
Neurologic comorbidity	Anastomotic leakage	Up & Low	3/5 (60)	Strong	[98, 114, 129, 140, 165, 227, 228]
	Mortality*	Up & Low	2/2 (100)	Considerable	
Steroid use (chronically)	Anastomotic leakage	Low	1/1 (100)	Minor	[189]
	Anastomotic leakage	Up & Low	3/5 (60)	Considerable	
Anti-coagulant therapy	Anastomotic leakage	Low	1/1 (100)	Minor	[2, 95, 142, 148, 167, 200]
	Anastomotic leakage	Up & Low	3/5 (60)	Considerable	

Table 2 (continued)

Preoperative risk factors	Type of complications	Type of surgery (Up/Low)	Number of articles favoring (%)	Level of evidence	Reference(s)
Intoxications					
Smoking	Anastomotic leakage	Up & Low	15/20 (75)	Very strong	[14, 25, 26, 98, 102, 114, 124, 129, 138, 142, 158, 160, 165, 166, 200, 201, 210, 220, 221, 229–232]
	Mortality*	Low	2/2 (100)	Considerable	
Alcohol consumption	CD ≥ IIIa	Up	2/2 (100)	Considerable	[124, 129, 138, 158, 166, 210, 232]
	Anastomotic leakage	Low	4/6 (67)	Considerable	
Nutritional-related risk factors					
Overweight (BMI >25)	Anastomotic leakage	Up & Low	4/9 (44)	Considerable	[2,49,88,94,95,104,105,111,113 -115,122,123,133,138,146,160,163,174,180,188,195,233–240]
	Pancreatic fistula	Up	2/2 (100)	Considerable	
	Intra-abdominal infection	Up & Low	3/5 (60)	Considerable	
	Reoperation	Up	1/1 (100)	Minor	
	Venous thrombo-embolism	Up & Low	1/3 (33)	Minor	
	Mortality*	Up & Low	2/4 (50)	Considerable	
Obesity (BMI >30)	CD ≥ IIIa	Up	6/11 (55)	Strong	[14, 114, 124, 140, 148, 165, 189, 207, 210, 233, 235, 238, 239, 241]
	Anastomotic leakage	Up & Low	6/7 (86)	Strong	
	Venous thrombotic-embolism	Up & Low	1/3 (33)	Minor	
	CD ≥ IIIa	Up & Low	1/3 (33)	Minor	
Sarcopenic obesity	Venous thrombo-embolism	Up & Low	1/3 (33)	Minor	[130]
	CD ≥ IIIa	Low	1/1 (100)	Minor	
	CD ≥ IIIa	Up	1/1 (100)	Minor	
Underweight (BMI <18,5)	Anastomotic leakage	Up & Low	1/2 (50)	Minor	[128, 184, 227, 235, 239]
	Sarcopenia	Up & Low	2/3 (67)	Considerable	
Malnutrition/preoperative weight loss	Prolonged intubation	Up	1/1 (100)	Minor	[242–247]
	CD ≥ IIIa	Up & Low	3/4 (75)	Strong	
	Anastomotic leakage	Up & Low	5/8 (63)	Strong	
	Duodenal stump fistula	Up	1/1 (100)	Minor	
High visceral fat area (VFA)	Mortality*	Up	2/2 (100)	Considerable	[106, 108, 114, 115, 130, 138, 140, 179, 210, 215, 248, 249] [144, 153, 198, 250]
	CD ≥ IIIa	Up	4/5 (80)	Strong	
	Anastomotic leakage	Up & Low	2/3 (100)	Considerable	
Perineal Fat Surface area (PRF) ≥ 40 cm ²	Intra-abdominal infection	Up	2/2 (100)	Considerable	[103, 234, 251–253]
	Mortality*	Up	1/1 (100)	Minor	
	CD ≥ III	Low	1/1 (100)	Minor	
Disease-related risk factors					
Tumor stage/tumor size	Anastomotic leakage	Up & Low	9/16 (56)	Considerable	[2,49,90,91,95,104,105,110,113,119,120,123,131,133,137,139,144 -146,148,152,153,159–161,164,172,173,176–178,187,191,216 -219,225,254–260]
	Postoperative hemorrhage	Up	2/2 (100)	Considerable	
	Intra-abdominal infection	Up & Low	2/3 (67)	Considerable	
	Major adverse cardiac event (MACE)	Up	1/1 (100)	Minor	
	Mortality*	Up & Low	2/4 (50)	Minor	
	CD ≥ IIIa	Up	13/22 (59)	Strong	
Preoperative tumor complications	Anastomotic leakage	Low	1/3 (33)	Minor	[2, 126, 139, 147, 184, 261, 262]
	Mortality*	Up & Low	2/3 (67)	Considerable	
	CD ≥ IIIa	Up	1/1 (100)	Minor	
Neoadjuvant therapy-related risk factors					
Neoadjuvant therapy	Anastomotic leakage	Up	1/1 (100)	Minor	[53, 149, 207, 263, 264]
	CD ≥ IIIa	Up	1/2 (50)	Minor	
	Mortality*	Up & Low	1/2 (50)	Minor	
Neoadjuvant chemoradiotherapy	Anastomotic leakage	Low	4/7 (57)	Strong	[2, 105, 166, 175, 196, 256, 265, 266]
	Chylothorax	Up	1/1 (100)	Minor	
	Intra-abdominal complication (CD ≥ IIIa)	Low	1/1 (100)	Minor	
Neoadjuvant chemotherapy	Anastomotic leakage	Up & Low	2/3 (67)	Considerable	[113, 114, 133, 153, 164, 195, 259, 267]
	CD ≥ IIIa	Up & Low	2/4 (50)	Considerable	
	Mortality*	Up & Low	1/2 (50)	Minor	
Neoadjuvant radiotherapy	Anastomotic leakage	Up & Low	4/7 (57)	Strong	[2, 105, 138, 184, 237, 268, 269]
Preoperative laboratory tests					
Hemoglobin decreased	Anastomotic leakage	Up & Low	2/4 (50)	Considerable	[104, 108, 128, 184, 210]
Platelet count increased	Anastomotic leakage	Low	1/1 (100)	Minor	[165]

(continued on next page)

Table 2 (continued)

Preoperative risk factors	Type of complications	Type of surgery (Up/Low)	Number of articles favoring (%)	Level of evidence	Reference(s)
Platelet count decreased	Postoperative hemorrhage	Low	1/1 (100)	Minor	[171]
White blood cell count (WBC) increased	Anastomotic leakage	Up & Low	1/2 (50)	Minor	[143, 210, 224]
	Venous thrombo-embolism	Low	1/1 (100)	Minor	
Neutrophil-to-lymphocyte Ratio (NLR)	Anastomotic leakage	Low	1/2 (50)	Minor	[160, 270]
C-reactive protein (CRP) increased	Anastomotic leakage CD ≥ IIIa	Up & Low	2/2 (100)	Considerable	[121, 128, 158, 178, 186]
		Up	2/3 (67)	Considerable	
CRP/Albumin ration (CAR)	Anastomotic leakage	Low	1/1 (100)	Minor	[142]
Increased creatinine	Anastomotic leakage Mortality*	Up & Low	1/2 (50)	Minor	[104, 117, 139, 140, 208, 216]
		Up	1/2 (50)	Minor	
		Up	1/2 (50)	Minor	
Decreased estimated glomerular filtration rate (eGFR)	CD ≥ IIIa	Up	1/1 (100)	Minor	[159]
Serum albumin	Anastomotic leakage Mortality CD ≥ IIIa	Up & Low	5/8 (63)	Strong	[26, 104, 123, 128, 130, 137, 139, 140, 151, 164, 168, 178, 183, 189, 190, 216, 232, 250, 263, 266]
		Up	2/3 (67)	Considerable	
		Up	5/10 (50)	Considerable	
Total protein decreased	Anastomotic leakage CD ≥ IIIa	Low	3/3 (100)	Considerable	[14, 121, 189, 190, 210]
		Up & Low	2/2 (100)	Considerable	
Albumin-to-fibrinogen ratio (AFR)	CD > IIIa	Up	1/1 (100)	Minor	[186]
Increased HbA1c	Anastomotic leakage	Up	1/1 (100)	Minor	[220]

3.5. Nutrition-related risk factors

3.5.1. Malnutrition/preoperative weight loss

Among cancer patients, 63 % experience weight loss before treatment. In those with gastric and esophageal cancers, this figure has been reported to be as high as 79 %–83 % [29,30]. Absolute weight loss can be an indication of malnutrition, which can also be measured according to nutritional indexes (e.g., Prognostic Nutritional Index, Nutritional Risk Screening). A more advanced stage of malnutrition leads to cancer anorexia-cachexia syndrome—a hypercatabolic state characterized by weight loss and sarcopenia—which occurs in 15 %–40 % of cancer patients [31,32]. Malnutrition and preoperative weight loss were significantly associated with major complications and mortality (Table 2). Lack of nutrients has been implicated in decreased function of the immune, respiratory and cardiac systems, as well as decreased healing function [33,34] and further deterioration due to a more catabolic metabolic state [13]. Collectively, this leads to an increased incidence of infectious complications as well as anastomotic leakage (Table 2). Low preoperative serum albumin levels are independently associated with an increased risk for major complications (Section 3.1.4).

3.5.2. Sarcopenia

Sarcopenia refers to the loss of skeletal muscle volume and/or strength, which have a close relationship, and primarily originates from malnutrition (Section 3.4.1). Sarcopenia is especially prevalent in patients with esophageal and gastric cancers (up to 56 %), but also in elderly patients [35–37]. As shown in Table 2, sarcopenia was independently associated with worse surgical outcomes. The relationship between sarcopenia and major postoperative complications and mortality is due to reduced healing capacity resulting from a lack of nutrients and, therefore, a catabolic state.

3.5.3. Overweight and obesity

Obese and overweight patients are at higher risk for postoperative complications and mortality after major gastrointestinal surgery (Table 2). There are multiple theories addressing the association between overweight and major complications. First,

obese patients often exhibit a significantly increased number of comorbidities, including diabetes, hyperlipidemia, coronary artery disease, and hypertension [38,39]. Second, overweight and obesity are associated with an increased incidence of anastomotic leakage believed to be caused by a preoperative inflammatory state and increased insulin resistance, leading to decreased healing capacity [40,41]. Third, increased visceral fat in those undergoing abdominal surgery may lead to more complications due to more technical difficulties (e.g., thicker mesocolon, increased abdominal wall pressure leading to decreased intraoperative visibility) [39,42], which in turn leads to longer operation time and greater transfusion requirements [19]. Some retrospective studies have explored the relationship between visceral fat area, body mass index, and the impact of excessive abdominal fat tissue on surgical outcomes. However, whether visceral fat area is a better parameter than body mass index remains controversial [43].

3.6. Disease-related risk factors

3.6.1. Preoperative tumor complications

Of all preoperative tumor complications, anemia and iron deficiency are the most common. The prevalence of any degree of anemia has been suggested to be 50 %–75 % in patients with colorectal cancer [44,45]. Anemia leads to decreased healing capacity. Therewithal, patients receiving preoperative transfusion exhibited an increased rate of postoperative complications [46]. Blood transfusions appear to induce an immunosuppressive effect; therefore, a policy restricting transfusion is recommended [47]. Local preoperative tumor complications (e.g., bowel obstruction and tumor perforation) are independently associated with major complications (Table 2), theoretically, due to greater technical difficulty caused by an inflammatory response of the abdominal cavity and by the frailty of the tissue used for anastomosis and/or the spill of gastrointestinal fluids.

3.6.2. Advanced tumor stage

Advanced tumor stage, including those from poorly differentiated cancer types, lead to more extensive resections and technically more demanding surgery, followed by more intraoperative organ

damage and postoperative complications [42,48]. Second, extensive lymph node dissections and additional splenic resection, especially in gastric and esophageal resections, are high-risk procedures [49,50]. Additionally, larger tumors and more extensive resections lead to more non-radical resections [51]. Furthermore, patients with a higher tumor grade or TNM stage are more likely to exhibit a form of systemic immune-inflammation, which is also associated with major complications [52] (Section 3.1.4).

3.7. Neoadjuvant therapy-related factors

Neoadjuvant therapy aims to reduce tumor volume to achieve R0 resections and mitigate—if not eliminate—micrometastases and, eventually, cancer recurrence. However, the use of neoadjuvant therapy is also associated with an increase in postoperative complications caused by a diminished healing capacity of damaged tissue (Table 2). Additionally, a possible decrease in psychological performance after neoadjuvant therapy may lead to impaired postoperative recovery [53]. Preoperative radiotherapy in those treated for rectal cancer has a high prevalence of postoperative complications and anastomotic leakage (Table 2). After neoadjuvant therapy, patients also experience postoperative cardiopulmonary complications more frequently [54]. Patients unable to complete neoadjuvant therapy often experience increased postoperative complications, which may be a confounder due to poor underlying health conditions [55].

4. Discussion

Results of the present study provide a comprehensive and structured overview of the associations between preoperative risk factors and major complications and mortality following complex gastrointestinal cancer surgery. Our findings provide unambiguous evidence supporting the association between age and major postoperative complications, as well as for the association between anastomotic leakage and male sex and smoking. Furthermore, substantial evidence has been provided regarding the association between major postoperative complications and age, male sex, comorbidities, malnutrition, sarcopenia and overweight/obesity. This study also provides strong evidence supporting an association between different comorbidities, obesity, malnutrition, decreased serum albumin, more advanced tumor stages, neoadjuvant radiotherapy, neoadjuvant chemotherapy and the occurrence of anastomotic leakage. Furthermore, strong evidence exists for an association between 30-day mortality and male sex, higher ASA score, and cardiac comorbidity. This systematic review also shows that risk factors for postoperative major complications in lower – and upper gastrointestinal cancer surgery show a substantial overlap.

The identification of risk factors may afford opportunities to optimize perioperative care by managing preoperative risk factors, thereby decreasing the risk for postoperative complications and mortality. This may reduce healthcare costs, in contrast to major complications, which lead to an increase in healthcare expenditures [1]. The described associations may contribute to focused and personalized preoperative care by enrolling patients with certain risk factors (e.g., frailty and malnutrition) into prehabilitation programs. Subsequently, identification of high-risk patients may prompt closer postoperative surveillance. Additionally, the identification of high-risk patients may also influence decision making regarding treatment options, for example, a ‘watch and wait’ strategy after clinical complete response to neoadjuvant therapy [56,57].

4.1. Preoperative care

In literature, several prehabilitation programs have been described for modifiable risk factors, acting on the associations between preoperative factors and postoperative complications (Table 3). Preoperative control/management of these factors could improve postoperative outcomes. For example, adequate preoperative glycemic control in diabetic patients should lead to less postoperative hyperglycemia, which is associated with postoperative infectious complications and, could therefore, decrease the complication rate [58]. Furthermore, several prehabilitation programs incorporating for instance physical resistance training and nutritional support have been described in the literature (Table 3). Theoretically, these prehabilitation programs should lead to a reduction in postoperative complications, although there is limited evidence to support this [59,60]. A limitation—present in the majority of research investigating preoperative interventions—could be that prehabilitation is not specifically targeted at patient-specific risk factors. Physical endurance training in a population >70 years of age with ASA III-IV, led to a 20 % reduction in complications [61], indicating that preoperative care should be tailored to and specified for patients targeting their risk factors. Smoking cessation, which leads to a significant reduction in postoperative complications, is such an example [25,62]. Currently, growing interest of perioperative research is focused on the implementation and further improvement of ERAS protocols, which may lead to a reduction in overall complications by up to 50 %, as shown in a meta-analysis [5]. However, studies included in this systematic review have been published during the period in which ERAS protocols have been gaining interest and were widely implemented. This means that perioperative care has been improved and optimization of risk factors (e.g., malnutrition, smoking cessation) is standard in daily practice [63]. Also standard in ERAS protocols for gastrointestinal surgery is nutritional support, this is important for patients to cope with the metabolic and physiological stress inflicted by gastrointestinal cancer surgery and increased protein requirements [64]. In addition to nutritional support the so-called “Immunonutrition” which entails nutritional supplements (e.g., arginine, omega-3 fatty acids) is being studied, this is thought to lead to a reduction of surgical stress [65](Table 3). In the light of ERAS protocols studies have shown that an abbreviated period (2 h versus 12 h) of fasting leads to significantly reduced time-to-first-stool and complete oral intake [66,67]. In the ERAS protocol for lower gastrointestinal surgery, bowel preparation is an important point of discussion because this could lead to changes in electrolyte levels, metabolic imbalance, and dehydration, especially in elderly and/or frail patients [68]. The suggestion to omit this from the protocol, if possible, especially in frail patients, is supported by a meta-analysis that revealed an advantage to no-bowel preparation with regard to anastomotic leakage, intra-abdominal infections, and wound infections [69]. In this context the role of perioperative prophylactic antibiotics usage is studied, which may have a preventive effect on surgical site infections, anastomotic leakage and mortality [70].

4.2. Intraoperative techniques and care

Furthermore, ERAS protocols have been further improved intraoperative care in terms of: minimally invasive surgery, pain management, temperature management and fluid administration [71]. During the publishing of the included studies minimally invasive surgery has become more standard procedure. Other intraoperative ERAS-principles that have been studied and implemented such as goal-directed fluid administration and use of fewer use of intra-operative vasopressors have been independently

Table 3

Table includes actable or improvable risk factors and subsequent in literature described prehabilitation options to reduce the risk of postoperative morbidity. References used in this table are listed in [Supplementary File D](#).

Risk factors	Prehabilitation	Reference(s)
Physical performance	Resistance training Endurance training Physical therapy Breathing exercises Nutritional support Immunonutrition	[47, 59, 61, 271–275]
Pulmonary comorbidity	Preoperative inspiratory muscle training	[276–279]
Malnutrition	Nutritional support Oral nutritional supplements Immunonutrition	[63–65, 280–283]
Sarcopenia	Nutritional support Resistance training Nutritional supplements	[275, 284, 285]
Smoking	Smoking cessation	[16, 25, 62, 286]
Alcohol consumption	Alcohol cessation	[28]
Iron deficiency anemia	Intravenous iron supplementation	[287]
Dental plaque	Preoperative oral management by dentist	[288, 289]

associated with decreased postoperative complications [71–73]. Also intra-operative normothermia has been shown to have a positive effect on prevention of postoperative infections [74]. The use of opioid-sparing analgesia has been shown to increase recovery time, but no reduction in postoperative complications [75].

4.3. Postoperative care

With the current increase in data-driven approaches in healthcare, the risk factors reported in [Table 2](#) could be assessed in analysis of large datasets, in which the development of artificial intelligence may play an important role. Machine learning models usually demonstrate similar performance for predicting medical outcomes compared with logistic regression [76]. With increasingly larger datasets, machine learning holds the potential to unravel subtle associations that are not—or cannot—be identified using classic regression approaches. For suspected low-risk patients, machine learning has been suggested to support early discharge decisions [77]. Suspected high-risk patients may benefit from closer postoperative surveillance. Earlier detection of deterioration in patients may reduce the severity of complications and lessen the incidence of failure-to-rescue [78]. A proposed method for augmented postoperative surveillance involves wearable devices for constant postoperative monitoring [79]. These devices continuously transmit vital signs that alert healthcare personnel in case of deterioration.

4.4. Benchmarking surgical outcomes

Reduction of postoperative complications can also be established by clinical auditing and benchmarking of surgical outcomes [80,81]. Auditing is used to measure quality of care using structure, process, and outcome indicators [82,83]. The information provided by this review can be used for fair comparison of outcomes between different hospitals and institutions, which can only be established when using robust casemix models.

4.5. Limitations

The present study had some limitations. First, it provided only an overview of the associations between preoperative risk factors and major complications. As such, additional evidence is needed to confirm that these risk factors are causally related to poor surgical outcomes. Second, heterogeneous patient populations and study

designs may have hindered adequate interpretation of the study results. The included studies were all conducted in an observational manner, and most of them were designed retrospectively. There was a wide variety between risk factor reporting between studies, not all risk factors (e.g., renal disease, pulmonary comorbidity) were defined within the studies therefore making interpretation difficult. A similar reporting absence was seen in the implementation and usage of ERAS protocols within the included patient population. ERAS protocols have been widely implemented in surgery in recent years, that's why we limited our study period to 2005. This type of study is subjected to bias, although we suspect that due to the large number of studies, this bias was limited. However, all patients included in this study were preoperatively selected to be fit for surgery by expert opinion undergoing surgery, leading to allocation bias. This is a limiting factor for generalization of risk factor research in general. Although the present study provides an overview of all known risk factors, not all factors are described or necessarily applicable to every patient. Additionally, this study provides a theoretical overview; therefore, no quantitative effect of the specific risk factors is reported. An additional meta-analysis should be conducted to calculate the quantitative effects of each risk factor. Moreover, the inclusion of risk factors described in [Table 2](#) was based on the significant outcomes in multivariable analysis. This selection was performed to minimize the risk of including confounding factors. However, this may have excluded risk factors studied in low-powered studies, which could also have led to the lack of research investigating risk factors. In the present study, both upper gastrointestinal and lower gastrointestinal cancer surgery were considered by examining esophageal, gastric, and colorectal resections in a large subset of patients undergoing these operations.

5. Conclusions

In conclusion, identification of improvable/modifiable risk factors exposes possibilities for augmentation of perioperative care, which may lead to improved surgical outcomes. Furthermore, the identified risk factors can lead to alteration and additions to already existing ERAS protocols, which have already resulted in improved perioperative care and reduction in complications [5,63]. In addition, the identification of preoperative risk factors could lead to further improved and personalized perioperative care, thereby reducing major postoperative complications (e.g., risk factor-targeted prehabilitation). This study also contains important

information to improve benchmarking of surgical outcomes in nation-wide clinical audits. The reduction of postoperative complications may prolong (recurrence-free) survival and lead to improved quality of life [84–87].

Funding

The authors declare no conflicts of interest. This his research did not receive any specific grant from funding agencies in the public, commercial, or not-for-profit sectors.

Declaration of interest

The authors declare that they have no known competing financial interests or personal relationships that could have appeared to influence the work reported in this paper.

Appendix A. Supplementary data

Supplementary data to this article can be found online at <https://doi.org/10.1016/j.ejso.2021.07.021>.

References

- Selby LV, et al. Association of hospital costs with complications following total gastrectomy for gastric adenocarcinoma. *JAMA Surg* 2017;152(10):953–8.
- Sparreboom CL, et al. Different Risk Factors for Early and Late Colorectal Anastomotic Leakage in a Nationwide Audit, 61; 2018. p. 1258–66. 11.
- Busweiler LA, et al. Failure-to-rescue in patients undergoing surgery for esophageal or gastric cancer. *Eur J Surg Oncol* 2017;43(10):1962–9.
- Nygren J, et al. A comparison in five European Centres of case mix, clinical management and outcomes following either conventional or fast-track perioperative care in colorectal surgery. *Clin Nutr* 2005;24(3):455–61.
- Varadhan KK, et al. The enhanced recovery after surgery (ERAS) pathway for patients undergoing major elective open colorectal surgery: a meta-analysis of randomized controlled trials. *Clin Nutr* 2010;29(4):434–40.
- Clavien PA, et al. The Clavien-Dindo classification of surgical complications: five-year experience. *Ann Surg* 2009;250(2):187–96.
- Aurello P, et al. Recurrence following anastomotic leakage after surgery for carcinoma of the distal esophagus and gastroesophageal junction: a systematic review. *Anticancer Res* 2019;39(4):1651–60.
- Ramphal W, et al. Oncologic outcome and recurrence rate following anastomotic leakage after curative resection for colorectal cancer. *Surg Oncol* 2018;27(4):730–6.
- van Groningen JT, et al. Identifying best performing hospitals in colorectal cancer care: is it possible? *Eur J Surg Oncol* 2020;46(6):1144–50.
- Eisenstein S, Stringfield S, Holubar SD. Using the national surgical quality improvement project (NSQIP) to perform clinical research in colon and rectal surgery. *Clin Colon Rectal Surg* 2019;32(1):41–53.
- Hayden JA, et al. Assessing bias in studies of prognostic factors. *Ann Intern Med* 2013;158(4):280–6.
- Lagarde SM, et al. Prognostic factors in adenocarcinoma of the esophagus or gastroesophageal junction. *J Clin Oncol* 2006;24(26):4347–55.
- Lago V, et al. Risk factors for anastomotic leakage after colorectal resection in ovarian cancer surgery: A multi-centre study, 153; 2019. p. 549–54. 3.
- Klose J, et al. A Nomogram to Predict Anastomotic Leakage in Open Rectal Surgery-Hope or Hype?, 22; 2018. p. 1619–30. 9.
- Rockwood K, Mitnitski A. Frailty defined by deficit accumulation and geriatric medicine defined by frailty. *Clin Geriatr Med* 2011;27(1):17–26.
- Sharma A, et al. Tobacco smoking and postoperative outcomes after colorectal surgery, 258; 2013. p. 296–300.
- Scheingraber S, et al. Gender-specific differences in sex hormones and cytokines in patients undergoing major abdominal surgery. *Surg Today* 2005;35(10):846–54.
- Smit LC, et al. Infectious Complications after Major Abdominal Cancer Surgery: In Search of Improvable Risk Factors, 17; 2016. p. 683–93. 6.
- Benoist S, et al. Impact of obesity on surgical outcomes after colorectal resection. *Am J Surg* 2000;179(4):275–81.
- Fleck A, Raines G, Hawker F, Trotter J, Wallace PI, et al. Increased vascular permeability: a major cause of hypoalbuminaemia in disease and injury. *Lancet* 1985;1(8432):781–4.
- Proctor MJ, Horgan PG, Talwar D, Fletcher CD, Morrison DS, McMillan DC. Optimization of the systemic inflammation-based Glasgow prognostic score: a Glasgow inflammation outcome study. *Cancer* 2013;119(12):2325–32.
- Kijima T, Arigami T, Uckikado Y, et al. Combined fibrinogen and neutrophil-lymphocyte ratio as a prognostic marker of advanced esophageal squamous cell carcinoma. *Canc Sci* 2017;108(2):193–9.
- Xue D-D, et al. Comprehensive geriatric assessment prediction of post-operative complications in gastrointestinal cancer patients: a meta-analysis, 13; 2018. p. 723–36.
- Li S-J, et al. Diabetes mellitus and risk of anastomotic leakage after esophagectomy: a systematic review and meta-analysis, 30; 2017. p. 1–12. 6.
- Quan H, et al. The effect of preoperative smoking cessation and smoking dose on postoperative complications following radical gastrectomy for gastric cancer: a retrospective study of 2469 patients, 17; 2019. p. 61. 1.
- Parthasarathy M, et al. Risk factors for anastomotic leakage after colorectal resection: a retrospective analysis of 17 518 patients, 19; 2017. p. 288–98. 3.
- Mantziari S, Hübner M, Demartines N, Schäfer M. Impact of preoperative risk factors on morbidity after esophagectomy: is there room for improvement? *World J Surg* 2014;38(11):2882–90.
- Oppedal K, Moller AM, Pedersen B, Tonnesen H. Preoperative alcohol cessation prior to elective surgery. *Cochrane Database Syst Rev* 2012;(7). Cd008343.
- Laviano A, Meguid MM, Inui A, Muscaritoli M, et al. Therapy insight: cancer anorexia-cachexia syndrome—when all you can eat is yourself. *Nat Clin Pract Oncol* 2005;2(3):158–65.
- Laviano A, Meguid MM. Nutritional issues in cancer management. *Nutrition* 1996;12(5):358–71.
- Muliawati Y, Haroen H, Rotty LW. Cancer anorexia - cachexia syndrome. *Acta Med Indones* 2012;44(2):154–62.
- Ruiz Garcia V, et al. Megestrol acetate for treatment of anorexia-cachexia syndrome. *Cochrane Database Syst Rev* 2013;(3). Cd004310.
- Schneider SM, et al. Malnutrition is an independent factor associated with nosocomial infections. *Br J Nutr* 2004;92(1):105–11.
- Jayarajan S, Daly JM. The relationships of nutrients, routes of delivery, and immunocompetence. *Surg Clin* 2011;91(4):737–53 [vii].
- Nakashima Y, et al. Assessment of sarcopenia as a predictor of poor outcomes after esophagectomy in elderly patients with esophageal cancer. *Ann Surg* 2018;267(6):1100–4.
- Shachar SS, et al. Prognostic value of sarcopenia in adults with solid tumours: a meta-analysis and systematic review. *Eur J Canc* 2016;57:58–67.
- Nishigori T, et al. Impact of sarcopenic obesity on surgical site infection after laparoscopic total gastrectomy. *Ann Surg Oncol* 2016;23(Suppl 4):524–31.
- Bachmann R, et al. Comparison between abdominal fat measured by CT and anthropometric indices as prediction factors for mortality and morbidity after colorectal surgery, 81; 2018. p. 477–83.
- Hotouras A, et al. The influence of obesity and body mass index on the outcome of laparoscopic colorectal surgery: a systematic literature review, 18; 2016. p. 0337–66. 10.
- Zhang X, et al. The effect of increased body mass index values on surgical outcomes after radical resection for low rectal cancer, 49; 2019. p. 401–9. 5.
- De Magistris L, et al. Preoperative inflammation increases the risk of infection after elective colorectal surgery: results from a prospective cohort. *Int J Colorectal Dis* 2016;31(9):1611–7.
- Sparreboom CL, et al. Different risk factors for early and late colorectal anastomotic leakage in a nationwide audit. *Dis Colon Rectum* 2018;61(11):1258–66.
- Yang SJ, et al. Visceral fat area (VFA) superior to BMI for predicting post-operative complications after radical gastrectomy: a prospective cohort study. *J Gastrointest Surg* 2020;24(6):1298–306.
- Shander A, Knight K, Thurer R, Adamson J, Spence R. Prevalence and outcomes of anemia in surgery: a systematic review of the literature. *Am J Med* 2004;5(116):13.
- Leichtle SW, Mouwad NJ, Lampman R, Signal B, Cleary RK. Does preoperative anemia adversely affect colon and rectal surgery outcomes? *J Am Coll Surg* 2011;212(2):187–94.
- Papageorge CM, Kennedy GD, Carchman EH. Preoperative blood transfusion is a predictor of worse short-term postoperative outcomes after colectomy, 161; 2017. p. 1067–75.
- Ejaz A, Schmidt C, Johnston FM, Frank SM, Pawlik TM. Risk factors and prediction model for inpatient surgical site infection after major abdominal surgery. *J Surg Res* 2017;217:153–9.
- Bertelsen CA, Neuenschwander AU, Jansen JE, et al. Short-term outcomes after complete mesocolic excision compared with 'conventional' colonic cancer surgery. *Br J Surg* 2016;103(5):581–9.
- Lu J, et al. Major perioperative complications in laparoscopic spleen-preserving total gastrectomy for gastric cancer: perspectives from a high-volume center, 30; 2016. p. 1034–42. 3.
- Kulig P, Sierzega M, Pach R, et al. Differences in prognosis of Siewert II and III oesophagogastric junction cancers are determined by the baseline tumour staging but not its anatomical location. *Eur J Surg Oncol* 2016;42(8):1215–21.
- Vogelsang RP, Klein MF, Gögenur I. Risk factors for compromised surgical resection: a nationwide propensity score-matched study on laparoscopic and open resection for colonic cancer. *Dis Colon Rectum* 2019;62(4):438–46.
- Shi H, et al. Nomogram based on systemic immune-inflammation index to predict overall survival in gastric cancer patients. *Dis Markers* 2018;2018:1787424.
- Mungo B, et al. Does neoadjuvant therapy for esophageal cancer increase postoperative morbidity or mortality? *Dis Esophagus : Off J Int Soc Dis Esophagus* 2015;28(7):644–51.
- Bosch DJ, et al. Impact of neoadjuvant chemoradiotherapy on postoperative course after curative-intent transthoracic esophagectomy in esophageal

- cancer patients. *Ann Surg Oncol* 2014;21(2):605–11.
- [55] Claassen YHM, et al. Surgical morbidity and mortality after neoadjuvant chemotherapy in the CRITICS gastric cancer trial. *Eur J Surg Oncol* 2018;44(5):613–9.
- [56] van der Valk MJM, et al. Long-term outcomes of clinical complete responders after neoadjuvant treatment for rectal cancer in the International Watch & Wait Database (IWWD): an international multicentre registry study. *Lancet* 2018;391(10139):2537–45.
- [57] van der Valk MJM, et al. Importance of patient reported and clinical outcomes for patients with locally advanced rectal cancer and their treating physicians. Do clinicians know what patients want? *Eur J Surg Oncol* 2020;46(9):1634–41.
- [58] McConnell YJ, Johnson PM, Porter GA. Surgical site infections following colorectal surgery in patients with diabetes: association with postoperative hyperglycemia. *J Gastrointestinal Surg Off J Soc Surg Alimentary Tract* 2009;13(3):508–15.
- [59] Bruns ER, et al. The effects of physical prehabilitation in elderly patients undergoing colorectal surgery: a systematic review. *Colorectal Dis* 2016;(8):18.0267–77.
- [60] Carli F, et al. Effect of multimodal prehabilitation vs postoperative rehabilitation on 30-day postoperative complications for frail patients undergoing resection of colorectal cancer: a randomized clinical trial. *JAMA Surg* 2020;155(3):233–42.
- [61] Barberan-Garcia A, et al. Personalised prehabilitation in high-risk patients undergoing elective major abdominal surgery: a randomized blinded controlled trial. *Ann Surg* 2018;267(1):50–6.
- [62] Lindstrom D, et al. Effects of a perioperative smoking cessation intervention on postoperative complications: a randomized trial. *Ann Surg* 2008;248(5):739–45.
- [63] Ljungqvist O, Jonathan E. Rhoads lecture 2011: insulin resistance and enhanced recovery after surgery. *JPEN - J Parenter Enter Nutr* 2012;36(4):389–98.
- [64] Wischmeyer PE, et al. American society for enhanced recovery and perioperative quality initiative joint consensus statement on nutrition screening and therapy within a surgical enhanced recovery pathway. *Anesth Analg* 2018;126(6):1883–95.
- [65] Moya P, et al. Perioperative standard oral nutrition supplements versus immunonutrition in patients undergoing colorectal resection in an enhanced recovery (ERAS) protocol: a multicenter randomized clinical trial (SONVI study). *Medicine (Baltim)* 2016;95(21):e3704.
- [66] Reis PGA, et al. Abbreviated preoperative fasting favours postoperative oral intake at lower hospital admission costs for cancer patients. *Rev Col Bras Cir* 2019;46(3):e20192175.
- [67] Svanfeldt M, et al. Randomized clinical trial of the effect of preoperative oral carbohydrate treatment on postoperative whole-body protein and glucose kinetics. *Br J Surg* 2007;94(11):1342–50.
- [68] Beloosesky Y, et al. Electrolyte disorders following oral sodium phosphate administration for bowel cleansing in elderly patients. *Arch Intern Med* 2003;163(7):803–8.
- [69] Bucher P, et al. Mechanical bowel preparation for elective colorectal surgery: a meta-analysis. *Arch Surg* 2004;139(12):1359–64. discussion 1365.
- [70] Rollins KE, Lobo DN. The controversies of mechanical bowel and oral antibiotic preparation in elective colorectal surgery. *Ann Surg* 2021;273(1):e13–e15.
- [71] Hikasa Y, et al. Intraoperative fluid therapy and postoperative complications during minimally invasive esophagectomy for esophageal cancer: a single-center retrospective study. *J Anesth* 2020;34(3):404–12.
- [72] Mukai A, et al. Impact of intraoperative goal-directed fluid therapy on major morbidity and mortality after transthoracic oesophagectomy: a multicentre, randomised controlled trial. *Br J Anaesth* 2020;125(6):953–61.
- [73] Van Dessel E, et al. Perioperative fluid management in esophagectomy for cancer and its relation to postoperative respiratory complications. *Dis Esophagus* 2020;34(7):doaa1111.
- [74] Fahim M, et al. Effect of intra-operative Hypothermia on post-operative Morbidity in Patients with colorectal cancer. *Surg Infect* 2021.
- [75] Levy BF, et al. Randomized clinical trial of epidural, spinal or patient-controlled analgesia for patients undergoing laparoscopic colorectal surgery. *Br J Surg* 2011;98(8):1068–78.
- [76] Christodoulou E, et al. A systematic review shows no performance benefit of machine learning over logistic regression for clinical prediction models. *J Clin Epidemiol* 2019;110:12–22.
- [77] Grass F, et al. Identification of patients eligible for discharge within 48 h of colorectal resection. *Br J Surg* 2020;107(5):546–51.
- [78] Nguyen HB, et al. Early goal-directed therapy in severe sepsis and septic shock: insights and comparisons to ProCESS, ProMiSe, and ARISE. *Crit Care* 2016;20(1):160.
- [79] Weenk M, et al. Wireless and continuous monitoring of vital signs in patients at the general ward. *Resuscitation* 2019;136:47–53.
- [80] Wouters MW, Jansen-Landheer ML, van de Velde CJ. The quality of cancer care initiative in The Netherlands. *Eur J Surg Oncol* 2010;36(Suppl 1):S3–s13.
- [81] Marang-van de Mheen PJ, et al. The relative importance of quality of care information when choosing a hospital for surgical treatment: a hospital choice experiment. *Med Decis Making* 2011;31(6):816–27.
- [82] Waljee J, et al. Patient expectations and patient-reported outcomes in surgery: a systematic review. *Surgery* 2014;155(5):799–808.
- [83] Dimick JB, Welch HG, Birkmeyer JD. Surgical mortality as an indicator of hospital quality: the problem with small sample size. *Jama* 2004;292(7):847–51.
- [84] Beck C, et al. The influence of postoperative complications on long-term prognosis in patients with colorectal carcinoma. *Int J Colorectal Dis* 2020;35(6):1055–66.
- [85] Brown SR, et al. The impact of postoperative complications on long-term quality of life after curative colorectal cancer surgery. *Ann Surg* 2014;259(5):916–23.
- [86] Hayashi T, et al. Impact of infectious complications on gastric cancer recurrence. *Gastric Cancer* 2015;18(2):368–74.
- [87] Kasahara N, et al. A lack of postoperative complications after pancreatectomy contributes to the long-term survival of patients with pancreatic cancer. *Pancreatol* 2019;19(5):686–94.