



Universiteit
Leiden
The Netherlands

Redirected nuclear glutamate dehydrogenase supplies Tet3 with alpha-ketoglutarate in neurons

Traube, F.R.; Ozdemir, D.; Sahin, H.; Scheel, C.; Gluck, A.F.; Geserich, A.S.; ... ; Carell, T.

Citation

Traube, F. R., Ozdemir, D., Sahin, H., Scheel, C., Gluck, A. F., Geserich, A. S., ... Carell, T. (2021). Redirected nuclear glutamate dehydrogenase supplies Tet3 with alpha-ketoglutarate in neurons. *Nature Communications*, 12(1). doi:10.1038/s41467-021-24353-9










Version: Publisher's Version

License: [Creative Commons CC BY 4.0 license](https://creativecommons.org/licenses/by/4.0/)

Downloaded from: <https://hdl.handle.net/1887/3243127>

Note: To cite this publication please use the final published version (if applicable).

Redirected nuclear glutamate dehydrogenase supplies Tet3 with α -ketoglutarate in neurons

Franziska R. Traube ¹, Dilara Özdemir¹, Hanife Sahin¹, Constanze Scheel², Andrea F. Glück¹, Anna S. Geserich², Sabine Oganessian¹, Sarantos Kostidis ³, Katharina Iwan ¹, René Rahimoff¹, Grazia Giorgio², Markus Müller ¹, Fabio Spada ¹, Martin Biel², Jürgen Cox ⁴, Martin Giera ³, Stylianos Michalakis ^{2,5}✉ & Thomas Carell ¹✉

Tet3 is the main α -ketoglutarate (α KG)-dependent dioxygenase in neurons that converts 5-methyl-dC into 5-hydroxymethyl-dC and further on to 5-formyl- and 5-carboxy-dC. Neurons possess high levels of 5-hydroxymethyl-dC that further increase during neural activity to establish transcriptional plasticity required for learning and memory functions. How α KG, which is mainly generated in mitochondria as an intermediate of the tricarboxylic acid cycle, is made available in the nucleus has remained an unresolved question in the connection between metabolism and epigenetics. We show that in neurons the mitochondrial enzyme glutamate dehydrogenase, which converts glutamate into α KG in an NAD⁺-dependent manner, is redirected to the nucleus by the α KG-consumer protein Tet3, suggesting on-site production of α KG. Further, glutamate dehydrogenase has a stimulatory effect on Tet3 demethylation activity in neurons, and neuronal activation increases the levels of α KG. Overall, the glutamate dehydrogenase-Tet3 interaction might have a role in epigenetic changes during neural plasticity.

¹Department of Chemistry, Ludwig-Maximilians-Universität München, Munich, Germany. ²Department of Pharmacy - Center for Drug Research, Ludwig-Maximilians-Universität München, Munich, Germany. ³Leiden University Medical Center, Center for Proteomics and Metabolomics, Leiden, The Netherlands. ⁴Computational Systems Biochemistry, Max Planck Institute of Biochemistry, Martinsried, Germany. ⁵Department of Ophthalmology, University Hospital, LMU Munich, Munich, Germany. ✉email: michalakis@lmu.de; thomas.carell@lmu.de

Genomic DNA (gDNA) in higher vertebrates contains in addition to the four canonical nucleobases 5-methylcytosine (mdC), 5-hydroxymethylcytosine (hmdC), 5-formyl-cytosine (fdC), and 5-carboxy-cytosine (cadC)^{1–3}. These cytosine (dC) derivatives give rise to an additional information layer that controls transcriptional activity⁴. The mdC-oxidation products hmdC, fdC, and cadC are generated by ten eleven translocation enzymes (Tet1–3), which are themselves α -ketoglutarate (α KG)- and oxygen-dependent dioxygenases (Fig. 1a). They decarboxylate α KG to generate an active site-bound Fe(IV)-oxo species that ultimately performs the oxidation⁵. Accumulating evidence suggests that mdC and hmdC directly affect transcriptional activity⁶. In contrast, fdC and cadC are considered as nucleobases that are exchanged with dC⁷. This exchange enables active demethylation that allows the system to switch between transcriptional states. While fdC and cadC are only present in trace amounts in differentiated cells, mdC and hmdC are detectable in all tissues⁸. Among all tissues, hmdC levels are by far the highest in brain^{9,10}, and in particular found in synapse-related genes of neurons¹¹. This correlates with high Tet expression levels in neurons¹², further suggesting that dynamic oxidation-dependent active DNA demethylation is an essential prerequisite for neuronal plasticity^{13,14}. The question of how neuronal nuclei are supplied with the required amounts of α KG is an unsolved question that couples mdC-oxidation chemistry in the genome to metabolism.

α KG is mainly generated in mitochondria as a key intermediate of the tricarboxylic acid (TCA) cycle¹⁵. The α KG levels outside the mitochondria vary substantially between cell types^{16,17}. In differentiating cells this concentration was shown to be about 15 μ M and the α KG availability was able to be linked to Tet activity with elevated α KG concentrations providing higher hmdC levels^{16,18}. This indicates that α KG supply is indeed a Tet-activity limiting factor^{16,18,19}. The principle that co-substrate availability in the nucleus determines the activity of epigenetic enzymes was already established in recent years for other epigenetic marks. Histone acetylation, for example, depends on acetyl-CoA. In neuronal nuclei, acetyl-coA is produced on-site by the acetate-dependent acetyl-CoA synthetase 2, which translocates from the cytosol to the nucleus²⁰. In proliferating cells, acetyl-CoA is produced by the pyruvate dehydrogenase complex (PDC), which is shuttled from mitochondria into the nucleus²¹. This moonlighting of mitochondrial and cytosolic protein echoforms into the nucleus is a new principle that establishes the nucleus as a biosynthetically active entity²² controlled by metabolic fluctuations that can differ substantially within the cell²³. Here we show that neuronal Tet3 redirects the mitochondrial enzyme Gdh into the nucleus to establish an intranuclear production of α KG from NAD⁺ and glutamate.

Results

Tet3 enzyme kinetics. All three Tet paralogues have functions in a neuronal context^{14,24,25}, but only the *Tet3*^{-/-} phenotype is neonatal lethal in mice^{26,27}. In humans, TET3 deficiencies were further recently linked to intellectual disabilities and growth retardation²⁸. In order to compare the global expression levels of all three Tet enzymes in murine brain, a western blot was performed and the Tet expression levels in brain were compared to the levels in mouse embryonic stem cells (mESCs), which are known to have high Tet1, but low Tet3 levels³. The data depicted in Fig. 1b confirm that in accordance with literature¹², Tet3 is compared to Tet1 the dominantly expressed paralogue in brain. We next studied the affinity of Tet3 for α KG; again in comparison to Tet1 for which the enzyme kinetics were already studied in detail^{3,29}. We expressed the catalytic domains of Tet1 and Tet3 as

N-terminal GFP-fusion constructs (GFP-Tet1cd and GFP-Tet3cd) in HEK293T cells and purified the proteins with anti-GFP nanobody-coated magnetic beads (Supplementary Fig. 1a). For the assay, we adjusted the amounts of added protein based on the GFP fluorescence. The bead-attached proteins were then used to oxidize a single-stranded DNA oligonucleotide substrate containing one central mdC base with increasing amounts of α KG (Fig. 1c). The DNA was subsequently purified and the conversion of mdC to the three oxidation products hmdC, fdC, and cadC was analyzed by matrix-assisted laser desorption ionization time of flight (MALDI-TOF) and quantified on the nucleoside level by UHPLC triple quadrupole (UHPLC-QQQ) mass spectrometry (MS). The MALDI data revealed that GFP-Tet3cd requires an approximately 20-fold higher α KG concentration than GFP-Tet1cd to reach a similar oxidation yield (Fig. 1c). Our UHPLC-QQQ-MS data revealed a Michaelis constant (K_m) of 39 μ M α KG for GFP-Tet1cd, which is slightly lower than the previously reported K_m for Tet1²⁹. For GFP-Tet3cd, the measured K_m was almost twofold higher at 73 μ M α KG with a maximal conversion rate (v_{max}) only 15% compared to GFP-Tet1cd for (Supplementary Fig. 1b). In summary, the data suggest that Tet3, which is the dominantly expressed Tet paralogue in brain, has a particularly low affinity for α KG.

Gdh produces α KG co-substrate for Tet3 directly in neuronal nuclei. In order to search for Tet3 interaction partners that could provide α KG, we next performed an affinity-based proteomics study with nuclear lysate from whole murine brain. Prior to the study, we confirmed that the lysates showed specific enrichment of nuclear proteins (Supplementary Fig. 1c). For the initial co-immunoprecipitation (coIP), we overexpressed murine full-length Tet3 lacking the CXXC domain, which is the prevalent isoform in neuronal tissue³⁰, as an N-terminal GFP-fusion construct (GFP-Tet3) in HEK293T cells. The protein was then immobilized again on anti-GFP nanobody-coated beads (Supplementary Fig. 1d, e) and the beads were used as fishing baits for interacting proteins (Fig. 2a). Unfused GFP purified from the same source served as a negative control. By this approach we aimed to overcome the potential problem of antibody specificity, which may occur if two different antibodies—one for the actual coIP and one for the control coIP—are used. The samples were analyzed using label-free quantitative mass spectrometry (LFQ-MS)³¹. The statistical analysis of the data confirmed that the method provided highly reproducible datasets. The obtained data showed a high correlation within the replicates as determined by the Pearson correlation (Supplementary Fig. 2a). Particularly informative was the enrichment of O-linked- β -N-acetylglucosamine-transferase (Ogt) (Fig. 2b and Supplementary Fig. 2b). Because Ogt is a well-known Tet3 interactor^{32–34}, this finding was a first validation of the method. A search for other enriched proteins uncovered the mitochondrial enzyme glutamate dehydrogenase (Gdh), which catalyzes the NAD⁺-dependent conversion of glutamate into α KG (Fig. 2c), as a Tet3 interactor (Fig. 2b and Supplementary Fig. 2b). Gdh is a key component of carbohydrate, amino acid, neurotransmitter and oxidative energy metabolism^{35,36} and typically localizes to mitochondria³⁷. The discovery of Gdh as a Tet3 interactor in nuclear lysate suggests an additional nuclear localization of Gdh.

Given the very high glutamate concentration in neurons, ranging from 5 to 10 mM²³, an on-site biosynthesis of α KG from glutamate by nuclear Gdh would establish a direct local co-substrate supply chain for Tet3. Gdh is a bidirectional enzyme that can also consume α KG. For this to occur, however, Gdh requires low glutamate concentrations and especially high levels of ammonium, which are known to be toxic for neurons^{38,39}. To address the enzyme directionality, we measured the α KG-to-

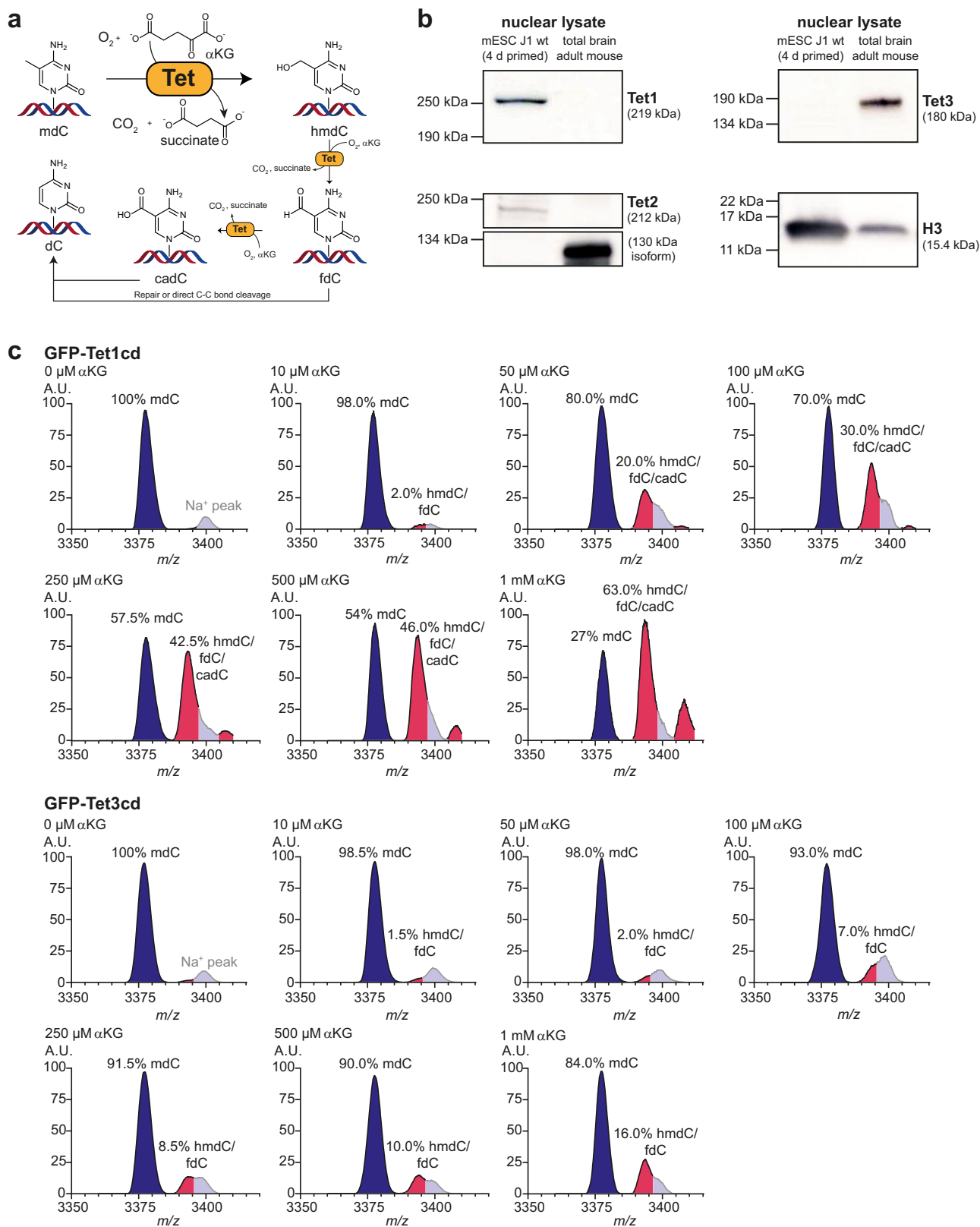


Fig. 1 Tet enzyme kinetics. a Illustration of α KG and O_2 -dependent mdC-oxidation to hmdC and further on to fdC and cadC by Tet enzymes, with hmdC being the main oxidation product. FdC and cadC can be finally replaced by unmodified dC. **b** Western blots against Tet1, Tet2, and Tet3 in nuclear lysate of mESCs compared to murine brain. **c** MALDI-TOF MS spectra ($n = 3$ independent experiments, spectra show mean) of a single-stranded DNA oligonucleotide containing mdC (blue and Na^+ peak in gray) that is oxidized to hmdC, fdC, and cadC (magenta) by GFP-Tet1cd or GFP-Tet3cd in the presence of increasing α KG concentrations. A.U. arbitrary units, m/z mass to charge ratio. Source data are provided as a Source Data file.

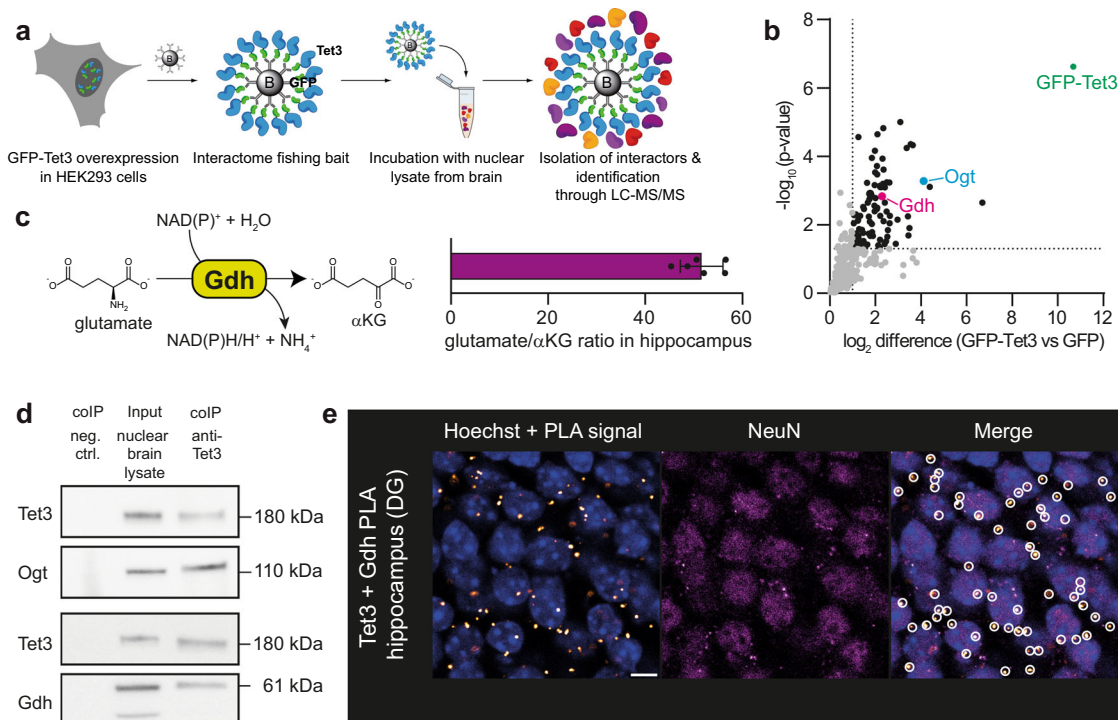


Fig. 2 Interaction of Tet3 with Gdh in neurons. **a** Experimental set-up for Tet3-enriched colIP. **b** Volcano plot after Tet3-enriched colIP in nuclear brain lysate of adult mice ($n = 4$ biologically independent sample preparations). Interaction partners were analyzed using label-free quantification after LC-MS/MS. Enriched interaction partners ($FDR < 0.05$, $\log_2 FC > 1$) are highlighted in black. **c** Conversion of glutamate to α KG by Gdh and glutamate to α KG ratio determined by NMR-based metabolomics in murine hippocampus ($n = 6$ biologically independent animals, bar shows mean, error bars SD). **d** Western blots detecting Tet3, Ogt, and Gdh after endogenous Tet3-colIP in nuclear brain lysate. **e** PLA signal (white/orange dots) of Tet3 and Gdh in the dentate gyrus (DG) of the murine hippocampus. Nuclei (blue) were stained with Hoechst and NeuN staining indicates neuronal nuclei. Scale bar is 5 μ m. Source data are provided as a Source Data file.

glutamate ratio by NMR-based metabolomics⁴⁰ in hippocampus. We found that the glutamate levels are at least 50 times higher than those for α KG (Fig. 2c). This finding in combination with the low ammonium levels in neurons³⁹ suggests that Gdh is operating in neuronal nuclei in the direction of α KG production, which is in line with previous reports about the function of Gdh in rat brain⁴¹.

To substantiate the suspected interaction of Tet3 with Gdh, we immunoprecipitated endogenous Tet3 from nuclear brain lysate and analyzed the interaction partners by western blotting. The interaction of Tet3 with Ogt served again as a positive control. Importantly, Gdh was successfully pulled down in Tet3-endogenous colIP (Fig. 2d), confirming the result obtained by Tet3-enriched colIP. To further validate the interaction of Tet3 and Gdh in situ, we next performed a proximity ligation assay (PLA), which provides a signal only when the two investigated proteins are within a 40 nm distance⁴². For the study, we used coronal brain slices and antibodies that were validated before the experiment (Supplementary Fig. 3 and ref. 43). Indeed, the Tet3/Gdh-PLA provided positive signals in hippocampal neurons (Fig. 2e and Supplementary Fig. 4a), further supporting a close proximity of Tet3 and Gdh in neuronal nuclei.

Gdh is transported with its MTS into neuronal nuclei. Gdh is known to be highly expressed in brain, which has high hmdC and Tet3 levels, as well as in liver, which has in contrast very low hmdC and Tet3 levels in a non-fasting state^{9,12,41,44}. We investigated if the differences regarding the hmdC levels correlate with a different Gdh distribution. Using immunohistochemistry (IHC), we indeed found an exclusive mitochondrial localization for Gdh in hepatocytes. A specific Gdh signal in the nuclei of hepatocytes could not be detected and we failed to detect Tet3 (Fig. 3a and Supplementary Fig. 4b). In granule neurons of the

hippocampal dentate gyrus, however, we detected only very little Gdh in mitochondria. In contrast, Gdh was dominantly present in the nucleus. Tet3 was also detected with the expected nuclear localization (Fig. 3a and Supplementary Fig. 4b). Altogether, these immunofluorescence data revealed that Gdh exists in two echoforms of which one is situated inside mitochondria, while a second form can be transferred to the nucleus in neurons.

Next, we investigated the question of how Gdh can moonlight²² into the nucleus. The gene *Glud1* encodes Gdh including an N-terminal 53 amino acids long mitochondrial-targeting sequence (MTS), which is cleaved off after import into the mitochondria^{35,37}. When we analyzed neuronal Gdh in different subcellular compartments by western blotting, we found in the cytosolic fraction only the long variant with MTS migrating above the 57 kDa marker band, whereas in the organelle fraction only the short variant without MTS was detected (Fig. 3b). For the nuclear fraction, we detected two Gdh signals, with the dominant signal being at ~ 61.3 kDa and the weaker signal at ~ 55.9 kDa corresponding to two Gdh echoforms with and without the MTS, respectively. The weak band below 57 kDa that is detected in the nuclear fraction likely reflects some mitochondrial impurity, which is supported by a weak signal for CoxIV, which is a protein of the mitochondrial matrix. As the MTS is cleaved off after its import into mitochondria, detection of the short version in the organelle fraction was expected. The discovery of the long Gdh echoform in the nucleus suggests that the nuclear Gdh does not pass through the mitochondrion, but rather that it is directly transferred into the nucleus despite its MTS.

The Gdh-Tet3 proximity increases Tet3 activity. To study how the proximity of Tet3 and Gdh influences Tet3 function, we

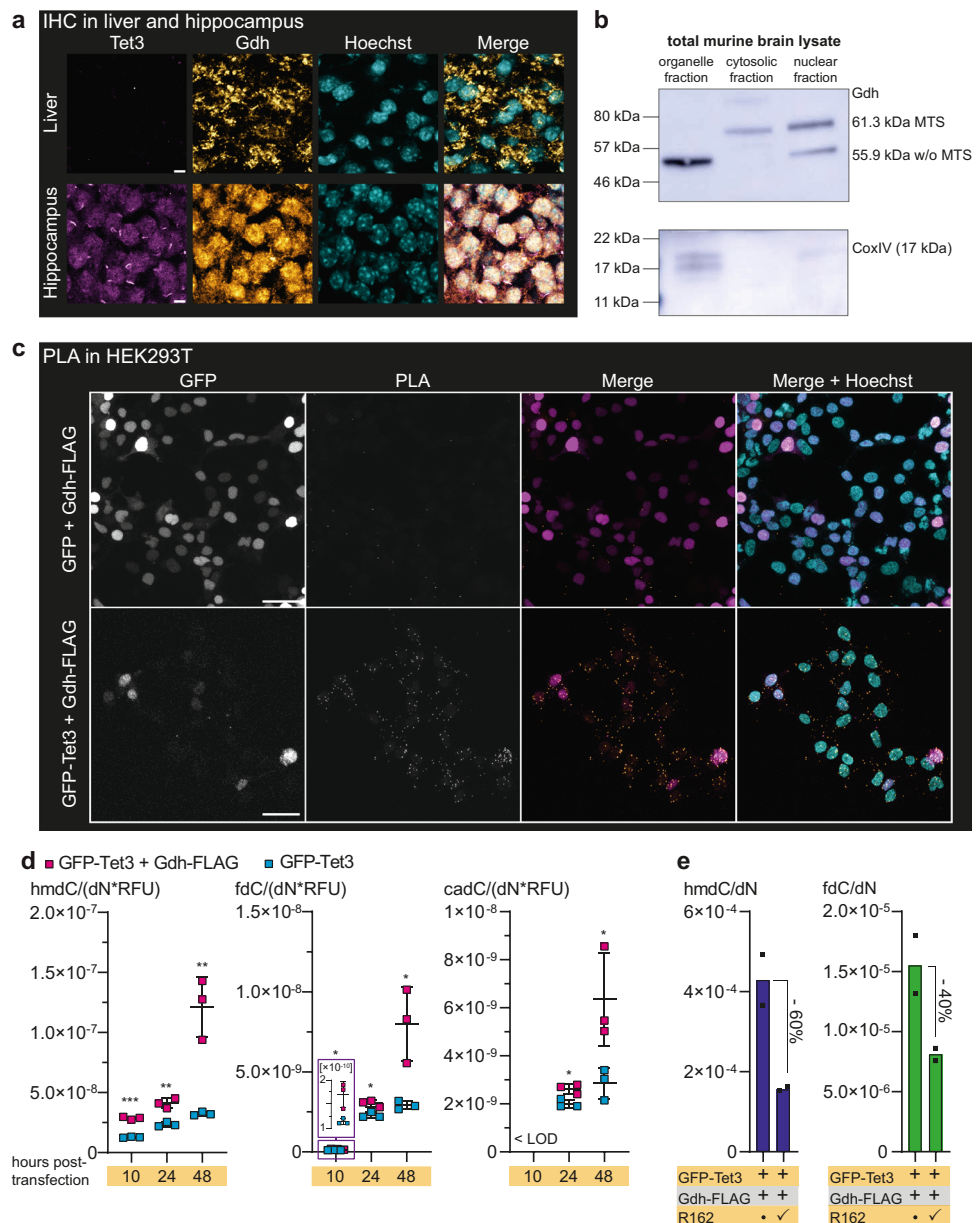


Fig. 3 Gdh localization in brain and liver and Tet3 + Gdh interaction after ectopic co-expression in HEK293T cells. **a** Immunofluorescence staining of Tet3 and Gdh in murine hippocampus compared to liver. Scale bar is 5 μ m. **b** Western blot to determine Gdh content of different cellular compartments (fractionation from total murine brain) shows different echoforms of Gdh. CoxIV was used as a mitochondrial marker. **c** PLA in HEK293T after ectopic co-expression of GFP-Tet3 and Gdh-FLAG. GFP + Gdh-FLAG co-expressing cells were used as a negative control. In the merged image, GFP signal is shown in magenta, PLA signal in orange and nuclei (cyan) were stained with Hoechst. Scale bar is 50 μ m. **d** Levels of hmdC, fdC, and cadC 10 h, 24 h, and 48 h after transfection of HEK293T ($n = 3$ biologically independent samples for each timepoint) with either GFP-Tet3 + Gdh-FLAG expressing plasmids (magenta) or GFP-Tet3 expression plasmid and an empty vector (cyan). Levels of mdC-oxidation products were normalized to the GFP signal of the cells. For each modification, each timepoint was compared individually. Two-sided t -test, correction for multiple comparisons using Holm-Sidak method, $p_{adj} < 0.05$ (*), < 0.01 (**), < 0.001 (***) exact p values and statistical details are provided in the Statistics and Reproducibility sub-section within the “Methods” section. Bars show mean, error bars show SD. LOD limit of detection **e** Levels of hmdC and fdC in the absence or presence of 20 μ M of Gdh inhibitor R162 24 h after transfection of HEK293T ($n = 2$ biologically independent samples) with GFP-Tet3 and Gdh-FLAG expressing plasmids. **a**, **c** Images show Z-stacks. Source data are provided as a Source Data file.

performed a functional assay in HEK293T cells with ectopically co-expressed murine GFP-Tet3 and C-terminally FLAG-tagged murine Gdh (Gdh-FLAG). We first verified the interaction of GFP-Tet3 and Gdh-FLAG in HEK293T cells, again using a PLA with anti-GFP and anti-FLAG primary antibodies (Fig. 3c). While in the negative control, where unfused GFP and Gdh-FLAG were co-expressed, no PLA signal was detectable, co-expression of GFP-Tet3 and Gdh-FLAG provided clear PLA signals, indicating

that GFP-Tet3 and Gdh-FLAG were in close proximity in the nuclei of HEK293T cells. Next, we quantified the levels of hmdC, fdC, and cadC using our reported UHPLC-QQQ-MS method⁴⁵ at 10, 24, and 48 h post transfection in HEK293T cells that were either transfected with plasmids coding for GFP-Tet3 and Gdh-FLAG, or with the plasmid coding for GFP-Tet3 and an empty vector. In this model system, glutamate supply was guaranteed by the addition of 2 mM of L-alanyl-glutamine to the medium. To

correct for expression level differences of GFP-Tet3 between the samples, we normalized the hmdC, fdC, and cadC levels against the GFP signal (relative fluorescent unit (RFU)), which we determined using fluorescence-based flow cytometry (Supplementary Fig. 5a). For all modifications at any timepoint, the GFP-Tet3 + Gdh-FLAG co-expressing HEK293T cells showed significantly higher Tet-product levels than the cells expressing GFP-Tet3 alone (Fig. 3d). The largest difference was observed after 48 h, indicating that under limited nutrient and therefore limited α KG availability, additional α KG supply by Gdh enhances the Tet3 activity substantially.

To further investigate the stimulatory effect of Gdh activity on Tet3, we applied the previously published Gdh inhibitor R162 on the GFP-Tet3/Gdh-FLAG expressing cells. R162, which is a purpurin analog, was shown to be a highly specific Gdh inhibitor with an inhibition and a dissociation constant (K_i and K_d) of around 30 μ M and a good cell permeability due to its allyl group⁴⁶. In the presence of R162, the hmdC levels dropped by 60% and the fdC levels dropped by 40% (Fig. 3e). Application of R162 did not decrease Tet3 activity in the cells expressing only GFP-Tet3 (Supplementary Fig. 5b), indicating that the endogenous (human) GDH does not contribute to the α KG supply of ectopically expressed murine Tet3.

In order to check how the proximity of Gdh and Tet3 influences Tet3 activity, we repeated the experiment with a Gdh-FLAG construct additionally containing a nuclear export sequence (Gdh-FLAG-NES), to prevent nuclear localization of Gdh (Supplementary Fig. 5c). We co-expressed Gdh-FLAG-NES with GFP-Tet3 and measured the hmdC and fdC levels compared to the GFP-Tet3/Gdh-FLAG expressing HEK293T cells. Twenty-four hours post transfection, the hmdC and fdC levels were significantly lower in the GFP-Tet3 + Gdh-FLAG-NES expressing cells (Fig. 4a). In addition, we were not able to mimic the effect of Gdh on Tet3 by the addition of 4 mM of cell-permeable dimethyl- α KG (DM- α KG) (Supplementary Fig. 5d), suggesting that the direct supply of Tet3 with α KG by Gdh in proximity is indeed enhancing Tet3 activity.

To clarify whether Gdh transport into the nucleus depends on Tet3, we next investigated the localization of Gdh in GFP-Tet3 + Gdh-FLAG and GFP + Gdh-FLAG expressing HEK293T cells using immunocytochemistry (ICC). Interestingly, when Gdh-FLAG was co-expressed with GFP-Tet3, Gdh-FLAG localization was ~40% nuclear and 60% mitochondrial (Fig. 4b and Supplementary Fig. 6a). GFP-Tet3 showed only the expected nuclear localization. In contrast, nuclear localization of Gdh-FLAG was abolished when it was co-expressed with GFP alone (Fig. 4b), indicating that the Gdh import into the nucleus is Tet3-dependent. We noted, however, that the expression of Tet3 and Gdh from two different promoters provided much higher Gdh levels than Tet3, which compromised interpretation of the data. Therefore, we repeated the experiment with a bicistronic vector including a T2A sequence that allowed for equimolar expression of FLAG₃-Tet3 and Gdh from the same promoter. Previous studies confirmed that ribosome skipping at the T2A is very efficient, so that only low amounts of fusion proteins are formed, and that this expression system does not change the localization of the expressed proteins^{47,48}. Using this expression system, we first investigated the possible formation of Tet3-Gdh fusion proteins and found none by western blotting, whereas a forced Tet3-Gdh fusion protein using the bicistronic vector with a mutated T2A sequence (T2A^{ΔGFP}), which prevents the ribosome skipping event, showed a clear band at the expected size (Supplementary Fig. 6b). The following ICC studies revealed that in the presence of Tet3, Gdh was efficiently transported to the nucleus and only minor amounts of Gdh were detected in mitochondria. By comparison, the endogenous human GDH was only located in the mitochondria (Fig. 4c), which might explain

why the application of R162 did not change the Tet3 activity in the just GFP-Tet3 expressing cells. The forced Tet3-Gdh fusion protein did not locate to the nucleus but remained in the cytosol (Supplementary Fig. 6c). Altogether, the data support our model that the nuclear localization of Gdh requires the presence of Tet3 and suggests that Tet3 itself, or a complex of which Tet3 is part of, mediates transfer of Gdh into the nucleus.

Neuronal depolarization leads to Gdh-dependent stimulation of Tet enzymes.

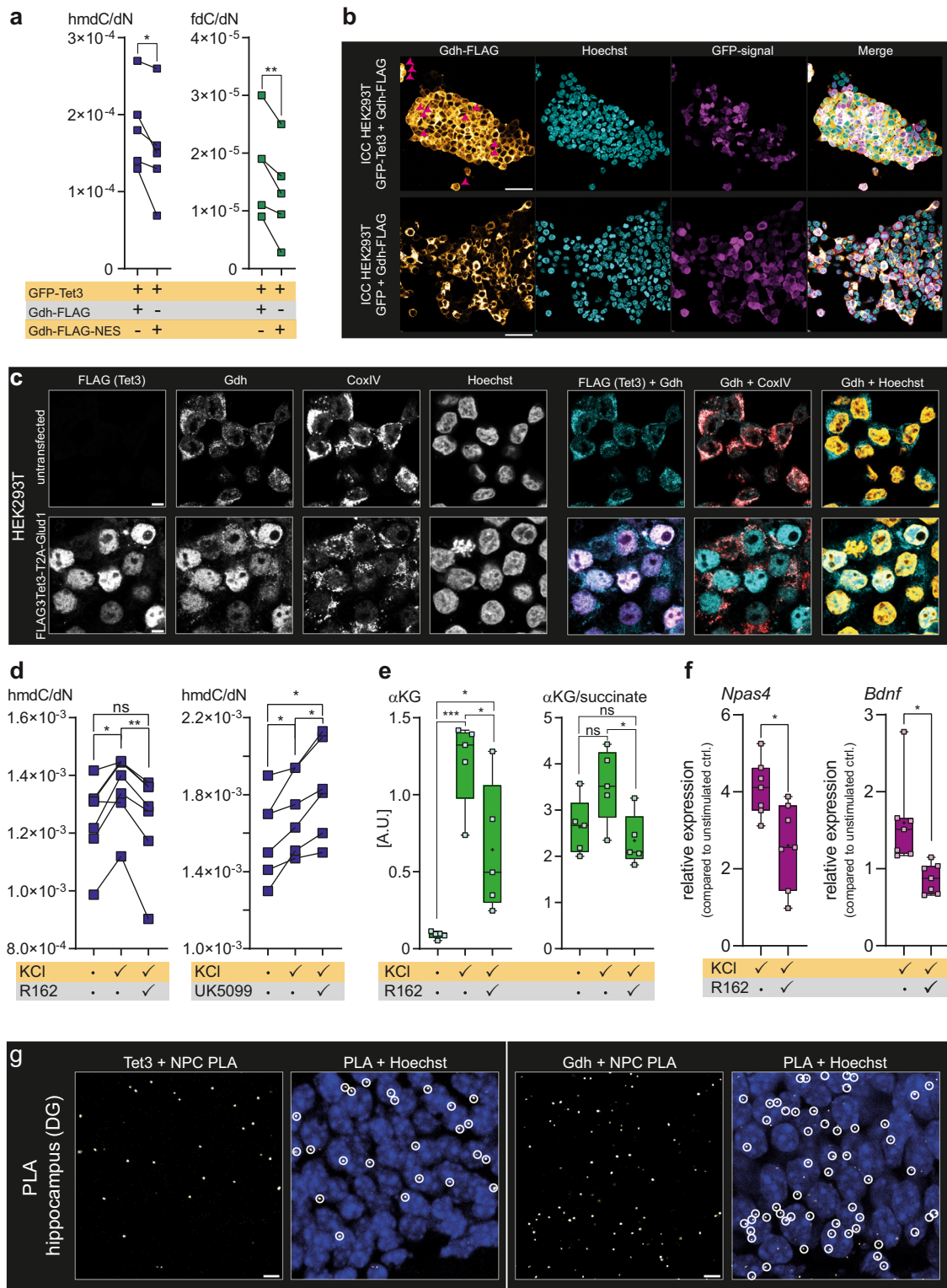
To transfer these findings from the HEK293T model system into a more physiological context, we exposed acute mouse hippocampal slices to depolarizing conditions (25 mM KCl), which simulate stimulation and induce neural activity⁴⁹. After 6 h, we quantified the hmdC levels and compared them to the hmdC levels of hippocampal slices that were kept in parallel in a physiological buffer solution. Constant neuronal depolarization led to significantly increased global hmdC levels. In the presence of the Gdh inhibitor R162, however, this hmdC increase could be fully suppressed (Fig. 4d). Although off-target effects of the pharmacological small-molecule inhibitor R162 could not be fully excluded, previous publications gave no such indication⁴⁶. Importantly, application of R162 allowed us to influence Gdh activity on the protein level directly and immediately. In contrast, siRNA-based approaches to knock-down Gdh expression by initiating Gdh-mRNA degradation do not affect Gdh activity directly and require transfection of siRNA, which might have comprised the quality of the sensible acute hippocampal slices.

As a reversed approach, we applied UK5099, which acts as an inhibitor of the mitochondrial pyruvate carrier and as a stimulator of Gdh⁵⁰. In this experimental set-up, a further increase in the hmdC levels after stimulation was observed (Fig. 3d). These data suggest that Gdh is indeed involved in Tet-dependent hmdC generation upon neuronal activation.

Quantification of α KG in the hippocampal slices before and after depolarization supported this interpretation. We detected a strong increase of the α KG concentration and an increase of the α KG/succinate ratio under depolarizing conditions. In the presence of the Gdh inhibitor R162, however, the α KG amount dropped significantly, while the α KG/succinate levels were back at the basal level (Fig. 4e). These data suggest that a substantial amount of the α KG increase during neural activity is caused by the action of Gdh.

We wanted to explore whether the metabolic stimulation of Tet-activity affects the expression levels of important neuronal genes. Neuronal stimulation is known to affect the DNA methylation status of several genes that modulate the response of the neuron toward present and future stimuli^{13,14}. Among those genes, the neuronal PAS-domain containing protein 4 (Npas4) and the brain-derived neurotrophic factor (Bdnf) play a pivotal role in synaptic homeostasis, learning and memory formation^{51,52}. We used RT-qPCR to quantify the expression of *Npas4* and *Bdnf* and observed for both genes reduced transcription during neuronal stimulation upon addition of R162 (Fig. 4f).

It is known that spatial organization of the nucleus has a direct impact on gene expression and that localization of a gene at the nuclear lamina is associated with gene silencing, whereas proximity to the nuclear pore complex (NPC) is linked to active gene expression⁵³. Therefore, the gene-activating interaction of Tet3 and Gdh would be expected to proceed at the NPC. We noticed that a high number of Tet3 + Gdh-PLA signals in the hippocampus derived from the nuclear periphery (Fig. 2e). To test for the hypothesis that the interaction between Tet3 and Gdh happens at the NPC, we investigated the individual interactions of Tet3 and Gdh with the NPC by PLA. Indeed, in both cases, we obtained PLA signals supporting that the Tet3/Gdh complex is localized close to the NPC (Fig. 4g). In addition, proteomic



analysis of a Tet3-coIP in nuclear brain lysate showed enrichment of several RNA-processing proteins like Fus (Supplementary Fig. 2b), which is a DNA/RNA-binding protein that is important for pre-mRNA binding and transport and has distinct functions in neuronal homeostasis⁵⁴. However, how the interaction of Tet3 and Gdh is organized within the nucleus and how this spatial organization is specifically linked to gene expression, needs to be addressed in future studies.

Altogether, our data support the idea that the interplay between nuclear Gdh for the NAD⁺-dependent manufacturing

of αKG and Tet3 is a hinge that allows metabolism to influence active demethylation processes in neurons. The mechanisms how the interaction of Tet3 and Gdh is regulated and whether Tet3 and Gdh interact indirectly or directly, potentially as part of a larger complex requires further investigation.

Discussion

Gdh is responsible for the NAD⁺-dependent deamination of glutamate to αKG. Although it is known to be a mitochondrial enzyme and is expressed with an MTS, Gdh is reported to have an additional

Fig. 4 Gdh localization and influence of Gdh on Tet enzymes, gene expression and metabolism during neuronal stimulation. **a** Comparison of hmdC and fdC levels in HEK293T ($n = 5$ biologically independent samples) expressing GFP-Tet3 + Gdh-FLAG or GFP-Tet3 + Gdh-FLAG-NES for 24 h. A two-sided paired t -test was performed. **b** ICC in HEK293T showing FLAG and GFP signal after ectopic co-expression of GFP-Tet3 + Gdh-FLAG or GFP + Gdh-FLAG from different promoters. Scale bar is 50 μm . **c** ICC in HEK293T showing FLAG, Gdh, and CoxIV after expressing FLAG₃-Tet3 and Gdh from a bicistronic vector compared to untransfected cells. Merged images: FLAG (magenta), Gdh (cyan), CoxIV (red) and Hoechst (yellow). Scale bar is 5 μm . **d** Hippocampal hmdC levels upon neuronal stimulation with 25 mM KCl for 6 h with and without 20 μM Gdh inhibitor R162 ($n = 7$ biologically independent animals) or 40 μM PDC inhibitor UK5099 ($n = 6$ biologically independent animals). Connected dots represent matched hmdC values from one individual mouse. RM one-way ANOVA combined with Tukey's multiple comparisons test was performed. **e** αKG level and $\alpha\text{KG/succinate}$ ratio in hippocampus ($n = 5$ biologically independent animals) after depolarization with and without R162. Ordinary one-way ANOVA combined with Tukey's multiple comparisons test was performed. A.U. arbitrary units. **f** Relative gene expression levels of *Npas4* and *Bdnf* ($n = 7$ biologically independent animals) in hippocampus after depolarization with and without R162 normalized to expression levels in unstimulated control. An unpaired two-sided t -test with Welch's correction was performed. **g** PLA of Tet3 + NPC and Gdh + NPC in the hippocampus. Images show Z-stacks. Scale bar is 5 μm . **a, d-f** (a, f) or $p_{(\text{adj})}$ (**d, e**) < 0.05 (*), < 0.01 (**), < 0.001 (***); exact p values and statistical details are provided in the Statistics and Reproducibility sub-section within the "Methods" section. **e, f** Boxes display interquartile range, median is shown as center line, mean as +, whiskers represent the minimum and the maximum. Source data are provided as a Source Data file.

nuclear localization in neural contexts^{35,37,55}. Our data confirm that neuronal Gdh has indeed a split spatial distribution with a substantial fraction of the protein being redirected to the nucleus, probably before entering the mitochondria. In neurons, glutamate is one of the most abundant metabolites making it in this respect an ideal starting material for the generation of large amounts of αKG . Our data suggest that one of the functions of Gdh in the nucleus is to supply Tet3 with αKG , thereby regulating Tet3-activity. Given that αKG is involved in many epigenetic processes and energy metabolism in general¹⁵, elevating the effective αKG molarity solely in the presence of Tet3 is an elegant way to avoid globally changing αKG levels, which could produce various side effects. This puts Gdh in line with other mitochondrial proteins, such as the PDC or enzymes of the TCA cycle that can be also translocated to the nucleus for controlled intranuclear metabolite biosynthesis and consequently metabolic regulation of gene expression by changing histone modifications^{21,56}. Our data expand this coupling between metabolism and epigenetics to the Tet-dependent oxidation of mdC to hmdC and likely further on to fdC and cadC. Since Gdh requires NAD^+ for the conversion of glutamate into αKG , these oxidation reactions are seemingly associated with the NAD^+ levels in the nucleus. NAD^+ is an essential small-molecule cofactor that is biosynthesized in a compartmentalized manner by different nicotinamide mononucleotide adenylyl transferases (NMNATs) in the nucleus (NMNAT-1), in the cytoplasm (NMNAT-2) and in mitochondria (NMNAT-3)⁵⁷. It was recently shown that the nuclear NAD^+ levels fluctuate depending on the metabolic state of the cell and it was suggested that the compartmentalized NAD^+ biosynthesis plays a key role in controlling transcriptional processes⁵⁸. Although we are far from understanding how a shift in energy and NAD^+ metabolism leads to the controlled activation of specific genes, our data suggest that nuclear localized Gdh for the NAD^+ -dependent on-site biosynthesis of αKG to steer Tet3 activity, can be an important contributor and regulator.

Methods

All procedures concerning animals conform to the German animal protection laws and were approved by the local authority (Regierung von Oberbayern).

Antibodies. CoxIV antibody (Cell Signaling Technology brain-derived neurotrophic factor4850, clone 3E11, rabbit monoclonal IgG): western blotting (1:1000), ICC (1:500)

Cytochrome C antibody (Santa Cruz Biotechnology sc-13560, clone 7H8, mouse monoclonal IgG): western blotting (1:1000)

FLAG antibody (Sigma-Aldrich F1804, clone M2, mouse monoclonal IgG): western blotting (1:2000), ICC (1:500)

FLAG antibody (Sigma-Aldrich F2555, clone SIG1-25, rabbit monoclonal IgG): PLA (1:250)

Gdh antibody (Invitrogen PA5-19267, goat polyclonal IgG, Lot #74422112, P1): western blotting (1:1000 – 1:2000), ICC (1:100 – 1:200), IHC (1:100)

Validation:

- Western blotting: signal at 56 kDa for haploid mESC, no signal for haploid mESC^{Glud1 -/-} (Supplementary Fig. 3d)
- ICC: strong signal for haploid mESC, no signal for haploid mESC^{Glud1 -/-} (Supplementary Fig. 3d)

GFP antibody (Cell Signaling Technology 2955, clone 4B10, mouse monoclonal): western blotting (1:1000), PLA (1:200)

Histone H3 antibody (Cell Signaling Technology 4499 S, clone D1H2, rabbit monoclonal IgG): western blotting 1:1000

NeuN antibody (EMD Millipore MAB377X, clone A60, Alexa488 conjugated, mouse monoclonal IgG): IHC (1:100)

NPC antibody (Sigma-Aldrich N8786, clone 414, mouse monoclonal IgG): IHC (1:250)

Ogt antibody (Invitrogen PA5-22071, rabbit polyclonal IgG, Lot #RH2258725): western blotting (1:1000)

Tet1 antibody (Active Motif 61741, clone 5D6, rat monoclonal IgG): western blotting (1:1000)

Validation:

- Western blotting: one strong signal above 200 kDa for mESC, but not for mESC TET triple knockout (TKO) cells (Supplementary Fig. 7)

Tet2 antibody (ptglab 21207-1-AP, rabbit polyclonal IgG): western blotting (1:1000)

Validation:

- Western blotting: a strong signal at the expected 212 kDa for mESC and at 130 kDa for murine brain, but not for mESC TET TKO cells (Supplementary Fig. 7)

Tet3 antibody (Abiocode N1 R1092-1, rabbit polyclonal IgG, Lot #7063 and #9013):

western blotting (1:1000), coIP (2 μg), ICC (1:500), IHC (1:500)

Validation:

- Western blotting: one strong signal at ~180 kDa for nuclear brain lysate, but not for mESC TET TKO cells (Supplementary Fig. 3a)
- ICC: total signal overlap with GFP in GFP-Tet3 transfected HEK293T, but not with GFP in GFP only transfected HEK293T (Supplementary Fig. 3b)
- ICC: no signal in mESC TET TKO (Supplementary Fig. 3c)
- IP: validation for IP has already been reported⁴³

β -Tubulin antibody (Cell Signaling Technology 2128, clone 9F3, rabbit monoclonal IgG): western blotting (1:1000)

Secondary antibodies. Anti-goat IgG (Sigma-Aldrich G4018, rabbit polyclonal): IP (1 μg for MS analysis, 2 μg for western blot analysis)

Cy2-anti-goat IgG (Jackson ImmunoResearch 705-225-147): IHC (1:200)

Cy3-anti-goat IgG (Jackson ImmunoResearch 805-165-180): IHC (1:400)

HRP-conjugated anti-goat IgG (Sigma-Aldrich A5420): western blotting (1:5000)

Alexa488-anti-mouse IgG (Cell Signaling Technologies 4408): IHC (1:800)

Alexa555-anti-mouse IgG (Cell Signaling Technologies 4409): IHC (1:800)

HRP-conjugated anti-mouse IgG (Sigma-Aldrich AP130P): western blotting (1:5000)

Cy3-anti-mouse IgG (Jackson ImmunoResearch 715-165-150): IHC (1:400)

Alexa488-anti-rabbit IgG (Cell Signaling Technologies 4412): IHC (1:800)

Alexa555-anti-rabbit IgG (Cell Signaling Technologies 4413): IHC (1:800)

Cy3-anti-rabbit IgG (Jackson ImmunoResearch 711-165-152): IHC (1:400)

HRP-conjugated anti-rabbit IgG (Sigma-Aldrich A0545): western blotting (1:5000)

Expression plasmids. GFP-Tet1cd (plasmid with ampicillin resistance, CAG promoter⁵⁹):

Expressed protein (N-terminus) eGFP—TEV cleavage site—Tet1cd (C-terminus); Tet1cd is the shortened version of murine Tet1 (NCBI XP_006513930.1) starting from amino acid 1367 of the original sequence, TEV cleavage site ENLYFQ/G

GFP-Tet3cd (plasmid with ampicillin resistance, CAG promoter):

Expressed protein (N-terminus) eGFP—TEV cleavage site—Tet3cd (C-terminus); Tet3cd is the shortened version of murine Tet3 (NCBI NP_001334242.1) starting from amino acid 696 of the original sequence

GFP-Tet3 (plasmid with ampicillin resistance, CAG promoter⁵⁹):

Expressed protein (N-terminus) eGFP—TEV cleavage site—Tet3; murine Tet3 (NP_898961.2) starting from amino acid 1 of the original sequence

Glud1-FLAG (plasmid with ampicillin resistance, CMV promoter):

Expressed protein (N-terminus) Gdh-FLAG (C-terminus); murine Glud1 (UniProtKB - P26443) starting from amino acid 1 of the original sequence, FLAG DYKDDDDK

Glud1-FLAG-NES (plasmid with ampicillin resistance, CMV promoter):

Expressed protein (N-terminus) Gdh-FLAG-NES (C-terminus); NES

GSALKLAGLDI⁶⁰

FLAG₃-Tet3-T2A-Glud1 (plasmid with ampicillin resistance, promoter TRE):

Expressed proteins (N-terminus) Strep-FLAG₃ - TEV cleavage site - Tet3 (C-terminus) and Gdh

FLAG₃-Tet3-T2A^{ΔGP}-Glud1 (plasmid with ampicillin resistance, promoter TRE):

Expressed protein (N-terminus) Strep-FLAG₃ - TEV cleavage site -Tet3-Gdh (C-terminus)

Chemical structures. Chemical structures were drawn using ChemDraw Professional 16.0.

Cell culture HEK293T cells. HEK293T cells (ATCC) were cultivated at 37 °C in water saturated, CO₂-enriched (5%) atmosphere. DMEM (Sigma-Aldrich D6546) or RPMI 1640 (Sigma-Aldrich R0883), containing 10% (v/v) fetal bovine serum (Invitrogen 10500-064), 1% (v/v) L-alanyl-L-glutamine (Sigma-Aldrich G8541), and 1% (v/v) penicillin-streptomycin (Sigma-Aldrich P0781), were used as growing medium. When reaching a confluence of 70–80%, the cells were routinely passaged. Cells were tested at least once in 2 months for Mycoplasma contamination using Mycoplasma Detection Kit (JenaBioscience PP-401L).

Transfection of HEK293T cells

Transfection of HEK293T cells for high protein expression. The transfection was performed in four p150 petri dishes (Sarstedt 83.3903.300). Five to six million cells per p150 were seeded in 25 mL of medium. After seeding, the cells were incubated for 24 h to reach a confluence of 40–80%. Ten micrograms of expression plasmid DNA and 30 μL of the transfection reagent jetPRIME (Polyplus Transfection VWR 114-15) were used as described by the manufacturer. Four hours and 28 h after transfection the medium was changed, and sodium butyrate (final conc. 4 mM) was added. Forty-eight hours after transfection, the cells were harvested by trypsinization and immediately used for protein extract preparation.

Transfection of HEK293T cells for ICC. The transfection was performed in 15 μ—slide eight-well plates (ibidi 80826). A total of 2–3 × 10⁴ cells were seeded per well in 200 μL of medium. Twenty-four hours after seeding, the cells were transfected using 150 ng of DNA per expression plasmid, 0.5 μL of jetPRIME, and 15 μL of jetPRIME buffer. Twenty-four hours after transfection, the cells were washed once with PBS supplemented with MgCl₂ and CaCl₂ (PBS⁺, Dulbecco's phosphate buffered saline, Sigma-Aldrich D8662) and immunofluorescence staining was performed.

In case of the bicistronic vector construct, cells were transfected with 200 ng plasmid DNA. 4 h after transfection, expression was induced by doxycycline (1 μg/mL final concentration) and 24 h after induction, cells were washed once with PBS⁺ and ICC was performed.

Transfection of HEK293T cells for UHPLC-QQQ-MS. The transfection was performed in six-well plates (Sarstedt 83.3920.300). A total of 2.5 × 10⁵ cells were seeded per well in 3 mL of RPMI medium. Twenty-four hours after seeding, the cells were transfected using 1.5 μg of DNA per expression plasmid (combination of GFP-Tet3 and one of the *Glud1* expression plasmids), 4 μL of jetPRIME, and 150 μL of jetPRIME buffer. In case of GFP-Tet3 only expressing cells, 1.5 μg of pESG-iba45 were co-transfected to keep the amount of transfected DNA constant. Six hours after transfection, the medium was changed and 10, 24, and 48 h after transfection, the cells were harvested and washed once with 1 mL of ice-cold PBS. Hundred microliters were used for GFP signal quantification of living cells using FACS (BD LSRFortessa; FSC 130 V, SSC 300 V, GFP 370 V log, 10,000 events per measurement), the rest was lysed and gDNA was isolated and analyzed by UHPLC-QQQ-MS as described previously using the Agilent 6400 Series Triple Quadrupole LC/MS System with the associated MassHunter Workstation Acquisition software and MassHunter Quantitative Analysis software⁴⁵. The hmdC/dN values were subsequently divided by the mean GFP signal to obtain hmdC/(dN*RFU).

When cells were fed with 4 mM DM-αKG, DM-αKG was added with the medium change 6 h after transfection.

Protein extract preparation

Protein extract preparation from transfected HEK293T cells. The harvested HEK293T cells and the resulting lysate were kept on ice during the preparation at all time. Per eight million cells, 1 mL of RIPA buffer (10 mM Tris (pH = 7.5), 150 mM NaCl, 0.5 mM EDTA, 0.1% (w/v) SDS, 1% (v/v) Triton X-100, 1% (w/v) deoxycholate), supplemented with 2.5 mM MgCl₂, 100 U/mL benzonase (Merck Millipore 70746-3) and 1 × protease inhibitor cocktail (PIC, Roche 05056489001) on the day of preparation was used for the lysis. Cells were resuspended in RIPA buffer and lysed for 1 h at 4 °C on a tube rotator. Afterward, the lysate was centrifuged (10,000 × g, 15 min, 4 °C) and the supernatant containing the proteins was transferred into a new tube. To enrich GFP-tagged proteins, the lysate was immediately incubated with GFP Nano-Traps either on agarose beads (Chromotek gta-20, for in vitro activity assay) or on magnetic agarose beads (Chromotek gtna-20).

Protein extract preparations from murine brain. Protein extracts from whole murine brain (*Mus musculus*, C57-Bl6/J wild type, both genders, 110 days old; Charles River, Sulzfeld, Germany), including separation into the organelle, the cytosolic, and the nuclear fraction, were prepared according to a previously published protocol⁶¹. The nuclear extract was then treated with 25 U/mL benzonase for 30 min on ice and subsequently centrifuged (21,000 × g, 15 min, 4 °C). The supernatant containing the nuclear lysate was transferred to a new tube. A Bradford protein assay (Bio-Rad 5000006) was performed according to the manufacturer's instructions to determine the protein concentration. To check whether the nuclear fraction showed specific enrichment for nuclear proteins in comparison to the combined organelle/cytosolic fraction and was not heavily contaminated with proteins from other compartments, a western blot against histone H3 (nuclear) and cytochrome c (mitochondrial) was performed. The western blot confirmed the specific enrichment of nuclear proteins in the nuclear fraction (Supplementary Fig. 1c).

Protein extracts from mESC and HEK293T. Protein extracts from mESC J1 wt, mESC TET TKO (primed for 96 h according to a previously published protocol⁶²), and HEK293T were prepared as previously described⁶³.

In vitro activity assay. For the in vitro activity assay on GFP Nano-Trap on agarose beads, GFP-Tet1cd or GFP-Tet3cd bound to the trap was used. The proteins were ectopically expressed in HEK293T (per in vitro assay 1 × P150 culture dishes for GFP-Tet1cd, 3 × P150 culture dishes for GFP-Tet3cd) and the resulting protein extracts were incubated for 1 h at 4 °C on a tube rotator with 140 μL of GFP Nano-Traps on agarose beads per extract. Afterwards, the beads were washed twice with colP wash buffer 1 (10 mM HEPES pH = 7.5, 150 mM NaCl, 0.5 mM EDTA), twice with colP wash buffer 2 (10 mM HEPES pH = 7.5, 1 M NaCl, 0.5 mM EDTA) and twice with colP wash buffer 1. The fluorescence of the GFP-tagged proteins bound to the GFP Nano-Trap was checked on a Tecan Plate Reader (Tecan GENios Pro, fluorescence intensity excitation 400 nm, emission 535 nm) and per reaction, the amount of Nano-Trap was adjusted that the fluorescence signal was 25,000 per reaction. Per assay, seven reactions in TET reaction buffer (50 mM HEPES pH = 7.5, 100 mM NaCl, 2 mM Vitamin C, 1.2 mM ATP, 2.5 mM DTT, 0.1 mM Fe^(II)(NH₄)₂(SO₄)₂ × 6 H₂O) with different concentrations of αKG (0 μM; 10 μM; 50 μM; 100 μM; 250 μM; 500 μM; 1000 μM) and 4 μM of DNA oligonucleotide (5'-TTTGTG[mC]GGTTG-3') were set up in 50 μL reaction volume/sample. The samples were incubated at 35 °C for 4 h under shaking. For MALDI-TOF measurements, 1 μL of the reaction supernatant was desalted on a 0.025 μm Ø VSWP filter membrane against ddH₂O for at least one hour, co-crystallized in a 3-hydroxypropionic acid matrix (HPA) and mass spectra were recorded on a Bruker Autoflex II in a *m/z* range of 1500–6000. Spectra were normalized to the recorded maximum intensity. For each condition (GFP-Tet1cd or GFP-Tet3cd, defined αKG concentration) three independent experiments were set up and MALDI-TOF spectra recorded. Afterward, the mean was calculated. The area under the curve was calculated using GraphPad Prism (version 8.0.0 or higher) for mC in the *m/z* range 3373.5–3389.0 and 3397.5–3404.5 (Na⁺ peak), hmdC and fdC in the *m/z* range 3389.0–3397.5 and cadC in the *m/z* range 3404.5–3410.

To determine the αKG concentration where half-maximal conversion rate is achieved, DNA oligonucleotides were purified after the assay using the Oligo Clean & Concentrator (Zymo Research D4061). Fifty picomoles of the DNA oligonucleotide were digested and analyzed by UHPLC-QQQ-MS according to a previously published protocol⁴⁵. As isotopologues D₃-mC, D₂-¹⁵N₂-hmdC, ¹⁵N₂-fdC, ¹⁵N₂-cadC (10 pmol each), and ¹³C₁₀-¹⁵N₂-dT (120 pmol) were spiked in per 50 μL sample. The absolute amounts [pmol] of hmdC, fdC, cadC were calculated and normalized to the absolute amount of dT. As for the conversion to hmdC one molecule of αKG is needed, for the conversion to fdC two molecules and for the conversion to cadC three molecules, the conversion rate was calculated as (n(hmdC)+2*n(fdC)+3*n(cadC))/n(dT).

Tet3-enriched colP. Twenty microliters of magnetic anti-GFP beads (Chromotek gtna-20) were washed three times with GFP wash buffer (10 mM Tris pH 7.5, 150 mM NaCl, 0.5 mM EDTA) and then incubated for 15 min on ice with nuclear

extract of GFP-Tet3 overexpressing HEK293T cells. To ensure the saturation of the beads with the GFP-fusion construct, different amounts of lysate were tested and monitored using a Tecan Reader. The GFP-Tet3 loaded beads were then washed twice with coIP wash buffer 1, twice with coIP wash buffer 2 and twice with lysis buffer C (20 mM HEPES pH = 7.5, 420 mM NaCl, 2 mM MgCl₂, 0.2 mM EDTA, 20% (v/v) glycerol). The GFP-Tet3 beads were subsequently incubated with 200 µg of nuclear brain extract for 15 min on ice. Following, they were washed twice with GFP wash buffer (10 mM Tris pH = 7.5, 150 mM NaCl, 0.5 mM EDTA). To elute the bound proteins, 50 µl of 200 mM glycine pH 2.5 were added and the solution was vortexed for 30 s. To gain more yield, the elution step was repeated. For the negative control, the same procedure was followed using GFP instead of GFP-Tet3.

Tet3-endogenous coIP. CoIP of endogenous Tet3 was performed using nuclear brain extract. Five hundred micrograms of nuclear brain extract, 2 µg of antibody, and 20 µl of Dynabeads Protein G (Thermo Fisher 10003D) were used per replicate. Anti-goat IgG was used for the negative control, which was performed with the same amounts.

The nuclear brain extract was incubated with the antibody for 1 h at 4 °C on a tube rotator and the Dynabeads Protein G were washed three times with GFP wash buffer. Afterward, the Dynabeads were added to the lysate, PBS was added to a final volume of 500 µl and the suspension was incubated for 1 h at 4 °C on a tube rotator. After incubation, the beads were washed three times 10 min with coIP wash buffer 1. Last, proteins were eluted with 50 µl of SDS loading buffer (50 mM Tris pH 6.8, 100 mM DTT, 2% (w/v) SDS, 10% (v/v) glycerol, 0.1% (w/v) bromophenol blue) for 10 min at 70 °C.

LC-MS/MS analysis. Samples for the mass spectrometer were reduced by the addition of 100 mM TCEP and subsequent incubation for 1 h at 60 °C on a shaker at 650 rpm. They were then alkylated by adding 200 mM iodoacetamide and incubating for 30 min at room temperature in the dark. Following, the samples were digested with 0.5 µg trypsin (Promega V5113) at 37 °C for 16 h. Afterward, they were incubated for 5 min at 100 °C, and subsequently 1 mM phenylmethylsulphonyl fluoride was added. StageTips were utilized to purify the samples for MS⁶⁴.

The samples were analyzed with an UltiMate 3000 nano liquid chromatography system (Dionex, Fisher Scientific) attached to an LTQ-Orbitrap XL (Thermo Fisher Scientific). They were desalted and concentrated on a µ-precolumn cartridge (PepMap100, C18, 5 µm, 100 Å, size 300 µm i.d. × 5 mm) and further processed on a custom-made analytical column (ReproSil-Pur, C18, 3 µm, 120 Å, packed into a 75 µm i.d. × 150 mm and 8 µm picotip emitter).

The samples were processed via a 127 min multi-step analytical separation at a flow rate of 300 nL/min. The gradient with percentages of solvent B was programmed as follows:

1% for 1 min; 1–4% over 1 min; 4–24% over 100 min; 24–60% over 8 min; 60–85% over 2 min; 85% for 5 min; 85–1% over 2 min; 1% for 8 min.

Mass spectrometric analysis was done with a full mass scan in the mass range between *m/z* 300 and 1700 at a resolution of 60,000. Following this survey scan, five scans were performed using the ion trap mass analyzer at a normal resolution setting and wideband CID fragmentation with a normalized collision energy of 35. Signals with an unrecognized charge state or a charge state of 1 were not picked for fragmentation. To avoid supersampling of the peptides, an exclusion list was implemented with the following settings: after 2 measurements in 30 s, the peptide was excluded for 90 s.

LFQ data processing. The MaxQuant⁶⁵ software (version 1.5.0.25) was used for LFQ. Quantification was performed with four biological replicates for Tet3-enriched coIP. GFP alone (four biological replicates) served here as control. The Andromeda search engine was used in combination with Uniprot databases (Mus musculus). A maximum of two missed cleavage sites was allowed. The main search peptide tolerance was set to 4.5 ppm. Carbamidomethyl (C) was set as static modification. Variable modifications were Acetyl (Protein N-term) and Oxidation (M). The LFQ algorithm was applied with default settings. The option “match between runs” was also used. The MS proteomics data have been deposited to the ProteomeXchange Consortium via the PRIDE⁶⁶ partner repository with the dataset identifier PXD004518.

LFQ data were analyzed with the Perseus software (version 1.5.0.9). The LFQ intensities were log transformed and only proteins identified in at least three samples were retained. As one of the GFP control quadruplicates contained only 64 proteins instead of >400, this replicate was removed from the dataset. Gene ontology analyses were performed with the Database for Annotation, Visualization, and Integrated Discovery (DAVID Bioinformatics Resources 6.7).

Western blotting. Samples were loaded on a 4–15% precast polyacrylamide gel (Bio-Rad) and MagicMark XP Standard (Thermo Fisher LC5603) and Blue Prestained Protein Standard, Broad Range (11–190 kDa) (New England Biolabs P7706S) or Color-coded Prestained Protein Marker, Broad Range (11–250 kDa) (New England Biolabs 14208) were used as protein standards. The gel was run at constant 150 V for 60 min in SDS running buffer (25 mM Tris, 192 mM glycine, 0.1% (w/v) SDS). For blotting, we used a PVDF blotting membrane (GE Healthcare Amersham Hybond P0.45 PVDF membrane 10600023) and pre-cooled Towbin

blotting buffer (25 mM Tris, 192 mM glycine, 20% (v/v) methanol, 0.038% (w/v) SDS). The membrane was activated for 1 min in methanol, washed with water, and equilibrated for additional 1 min in Towbin blotting buffer; the Whatman gel blotting papers (Sigma-Aldrich WHA 10426981) were equilibrated for 15 min in Towbin buffer and the precast gel was equilibrated for 5 min in Towbin buffer after the run. Western blotting (tank (wet) electro transfer) was performed at 4 °C for 10 h at constant 35 V. After blotting, the PVDF membrane was blocked for 1 h at room temperature using 5% (w/v) milk powder in TBS-T (20 mM Tris pH = 7.5, 150 mM NaCl, 0.1% (v/v) Tween-20). The primary antibodies were diluted in 5 mL of 5% (w/v) milk powder in TBS-T. The blocking suspension was discarded, and the diluted primary antibodies were added for 12 h at 4 °C and shaking. After incubation, the primary antibodies were discarded, and the membrane was washed three times 10 min with TBS-T. HRP-conjugated secondary antibodies were diluted in 5% (w/v) milk powder in TBS-T and added for 1 h at room temperature under shaking. In case of Tet3-endogenous coIP samples, TidyBlot HRP-conjugated Western blot detection reagent (Bio-Rad STAR209P) was used instead of HRP-conjugated secondary antibodies if the primary antibody against the potential interactor was produced in rabbit to avoid detection of the antibody fragments from the coIP. Afterward, the membrane was washed two times with TBS-T and one time with TBS (TBS-T without Tween-20) before SuperSignal West Pico Chemiluminescent Substrate (Thermo Scientific 34077) was used for imaging. Western blots were imaged using Amersham Imager 680 (auto exposure mode).

IHC. All steps were performed in a humidity chamber and at room temperature but not otherwise specified. Twelve micrometers thick coronar cryo-sections of snap-frozen adult mouse brain and liver were incubated (if applicable) with MitoTracker Deep Red FM (Invitrogen M22426) before fixation. Cryo-sections were fixed on slides using 4% paraformaldehyde (4% PFA, Thermo Scientific 28908) in 0.1 M phosphate-buffered solution, pH 7.4 (0.1 M PB). After three times washing with 0.1 M PB, the slices were permeabilized and blocked for 30 min using 0.3% (v/v) Triton X-100 and 5% (v/v) blocking reagent CB (Chemiblocker, Merck Millipore 2170) in 0.1 M PB. The primary antibodies were diluted in 0.1 M PB, containing 5% (v/v) CB and 0.3% (v/v) Triton X-100 and applied for 12 h at 4 °C. For the negative controls, no primary antibodies were added. After incubation, slices were washed three times with 0.1 M PB containing 2% (v/v) CB. For secondary detection, the fluorescent labeled secondary antibodies were diluted in 0.1 M PB, containing 3% (v/v) CB and applied the antibodies for 1 h in the dark, followed by three times washing with 0.1 M PB. Cell nuclei were stained with Hoechst 33342 (5 µg/mL), which was applied for 10 min in the dark, followed by one washing step with 0.1 M PB. After mounting (Mountant Permafluor Thermo Scientific TA-030-FM), the slices were analyzed using a Leica SP8 confocal laser scanning microscope with the associated LAS X software (Leica, Wetzlar).

ICC. ICC experiments were performed as IHC experiments, but instead of 0.1 M PB PBS⁺ was used. When ICC of transfected HEK293T cells was analyzed, Image J (version 2.0.0) was used.

PLA. For the PLA experiments, Duolink InSitu Orange Starter Kit (Sigma-Aldrich DUO92102 and DUO92106) was used. Until the application of primary antibodies, the procedure followed the IHC and ICC procedures described above. PLA probes without primary antibodies served as a negative control. After incubation with primary antibodies, slices/cells were washed once with 0.1 M PB/PBS⁺. The following steps were carried out as described by the manufacturer with modifications after the last washing step as described in the manual with 0.01 wash buffer B. Before staining of cell nuclei and mounting, slices/cells were washed with 0.1 M PB/PBS⁺. Where applicable, Alexa488-NeuN antibody was applied for 2 h in 2% (v/v) CB in 0.1 M PB and slices were washed afterwards three times with 0.1 M PB. However, Alexa488-NeuN application impaired the intensity of the PLA signal. Cell nuclei were stained with Hoechst 33342 (5 µg/mL), which was applied for 10 min in the dark, followed by one washing step with 0.1 M PB/PBS⁺. After mounting (Mountant Permafluor Thermo Scientific TA-030-FM), the slices were analyzed using a Leica SP8 confocal laser scanning microscope (Leica, Wetzlar).

Isolation of genomic DNA (gDNA), RNA, and UHPLC-QQQ-MS. Isolation of gDNA, RNA, and UHPLC-QQQ-MS experiments were performed according to a previously published protocol⁴⁵.

Synthesis of the Gdh inhibitor R162. Synthesis of the inhibitor R162 was done according to the literature^{67,68}. Prior to use for the cell culture, the compound was purified via preparative HPLC (Nucleosil VP 250/10 C18 column Macherey Nagel, 100% MeCN for 10 min).

Depolarization of hippocampal neurons followed by UHPLC-QQQ-MS analysis

Animals. Four- to five-week-old C57-Bl6/J (Charles River, Sulzfeld, Germany) wild-type mice of both genders were used.

Hippocampal slices. Acute transverse hippocampal slices (400 μm thick) were prepared as described previously^{69,70}. In brief, the brain was removed, the hippocampi of each hemisphere were dissected and cut using a MX-TS tissue slicer (Siskiyou Cooperation, OR). The slices were collected in an oxygenated (95% O_2 , 5% CO_2) physiological solution (118 mM NaCl, 3 mM KCl, 1 mM NaH_2PO_4 , 25 mM NaHCO_3 , 10 mM glucose, 1.5 mM CaCl_2 , 1 mM MgCl_2 , 0.1% (v/v) DMSO) at 37 °C until the hippocampi of all replicates were cut. Then the slices were distributed to three different conditions: oxygenated physiological solution, oxygenated 25 mM KCl solution (118 mM NaCl, 25 mM KCl, 1 mM NaH_2PO_4 , 25 mM NaHCO_3 , 10 mM Glucose, 1.5 mM CaCl_2 , 1 mM MgCl_2 , 0.1% (v/v) DMSO) and oxygenated 25 mM KCl solution supplemented with 20 μM inhibitor R162 or 40 μM UK5099 (Sigma-Aldrich PZ0160-5MG). Six to ten slices were pooled for each replicate. After 6 h incubation time, the slices were transferred into reaction tubes, snap frozen in liquid nitrogen and stored at -80 °C until use. Isolation of gDNA, subsequent digest of gDNA, and analysis by UHPLC-QQQ-MS were performed according to a previously published protocol⁴⁵.

We excluded mice from further analysis (hmdC quantification and gene expression) when *Npas4* expression was not upregulated in the depolarized hippocampal slices compared to the unstimulated control (one mouse out of eight for R162 experiment and two mice out of eight for UK5099 experiment) as this is an indicator that stimulation did not work, and the slices might be damaged.

RT-qPCR. For cDNA synthesis, the RevertAid First Strand cDNA Synthesis Kit (Thermo Scientific K1621) was used according to the manufacturer's instructions. One hundred ninety nanograms of total RNA was used for cDNA synthesis. Real-time quantitative PCR (RT-qPCR) was performed on StepOnePlus Real-Time PCR system (Applied Biosystems Thermo Fisher Scientific) using PowerUpTM SYBRTM Green qPCR Master Mix (Applied Biosystems Thermo Fisher Scientific A25742). C_T values of each sample were determined in technical duplicates by the StepOneTM software (Applied Biosystems Thermo Fisher Scientific) using the fast cycle protocol. The relative expression levels of target genes were then quantified from seven biological replicates ($n = 7$) according to Pfaffl et al.^{71,72}.

The primers for RT-qPCR are listed in Supplementary Table 1 and the following primers have been published previously:

Npas4 (mouse)⁷³
Bdnf total (mouse)⁷⁴

Metabolomics. Pre-weighed frozen hippocampal tissues from six mice ($n = 6$) per condition (physiological solution, 25 mM KCl, 25 mM KCl + R162) were homogenized using a bullet blender and five 1.4 mm stainless steel beads in a mixture of 1.05 ml ice-cold methanol/chloroform 1:2 (v/v). Following sonication of supernatants for 1 min, an additional 0.7 ml mixture of chloroform/LC grade water, 1:1 (v/v) were added, samples were vortexed for 20 s and incubated on wet ice for 30 min. Extracts were then centrifuged for 5 min at 16,000 $\times g$ and 4 °C and 0.6 ml from the upper aqueous phase were collected and dried under nitrogen gas. For NMR measurements, the dried extracts were dissolved in 0.25 ml 0.15 M phosphate buffer (pH 7.4) in deuterated water containing 0.04 mM sodium trimethylsilylpropionate- d_4 (TSP) as internal standard. One 1D proton NMR was collected for each sample in a 14.1 T Bruker Avance II NMR under standardized conditions as described in Kostidis et al., 2017⁴⁰. The NMR buffer was degassed, and NMR tubes were flushed with nitrogen to prevent oxidation. Metabolites were quantified in Chenomx NMR suit 8.4 (Chenomx Inc, Canada) and concentrations were corrected according to the tissue mass per sample. One mouse was completely excluded from further analysis as one sample out of the three conditions was lost during the sample preparation.

Statistics and Reproducibility

Details about the statistical analysis. Statistical analysis, except for LFQ data processing as described above, was performed using GraphPad Prism (version 8.0.0 or higher) and only measurements from biological independent samples were considered.

Figure 3d:

For each biologically independent sample, hmdC/dN, fdC/dN, and cadC/dN values were normalized to the GFP signal to balance different Tet3 expression levels between the GFP-Tet3 and the GFP-Tet3 + Gdh-FLAG expressing cells, resulting in hmdC/(dN*RFU), fdC/(dN*RFU) and cadC/(dN*RFU). Samples were grouped (columns: Group A GFP-Tet3, Group B GFP-Tet3 + Gdh-FLAG; rows: 10, 24, 48 h post transfection; $n = 3$ biologically independent samples for each condition). For analysis, multiple t-tests (one per row, all of them two-sided) were chosen with individual variances between the rows. Statistical significance was determined using Holm-Sidak method with $\alpha = 0.05$ to correct for multiple comparisons.

hmdC/(dN*RFU): 10 h: p value 0.000026, p_{adj} value 0.000078

24 h: p value 0.002581, p_{adj} value 0.005156

48 h: p value 0.003545, p_{adj} value 0.005156

fdC/(dN*RFU):10 h: p value 0.022270, p_{adj} value 0.038038

24 h: p value 0.009375, p_{adj} value 0.027862

48 h: p value 0.019204, p_{adj} value 0.038038

cadC/(dN*RFU):10 h: - 24 h: p value 0.009375, p_{adj} value 0.030692

48 h: p value 0.019204, p_{adj} value 0.040533

Figure 4a:

Differences between hmdC and fdC levels of GFP-Tet3 + Gdh-FLAG and GFP-Tet3 + Gdh-FLAG-NES expressing cells were analyzed individually for each biological replicate by calculating the paired t-test (two-sided p value).

hmdC: paired t test p value 0.0468; correlation coefficient r of the pairing 0.9492 (p value 0.0068, significantly effective pairing).

fdC: paired t test p value 0.0081; correlation coefficient r of the pairing 0.9708 (p value 0.0030, significantly effective pairing).

Figure 4d-f:

For each mouse, the prepared hippocampal slices were distributed to three different conditions - (A) physiological buffer, (B) 25 mM KCl, (C) 25 mM KCl + Inhibitor (20 μM R162 or 40 μM UK5099).

Figure 4d:

hmdC level R162 experiment:

$n = 7$, RM one-way ANOVA with Geisser-Greenhouse correction p value 0.0052; matching p value (one-sided) <0.0001. Tukey's multiple comparisons test with individual variances computed for each comparison: A/B p value 0.0136, A/C p value 0.9995, B/C p value 0.0037.

hmdC level UK5099 experiment:

$n = 6$, RM one-way ANOVA with Geisser-Greenhouse correction p value 0.0034; matching p value (one-sided) <0.0001. Tukey's multiple comparisons test with individual variances computed for each comparison: A/B p value 0.0410, A/C p -value 0.0123, B/C p -value 0.0130.

Figure 4e:

αKG level (normalized to mg of tissue) R162 experiment $n = 5$, ordinary one-way ANOVA p value 0.0002 (Brown-Forsythe test p value 0.1512). Tukey's multiple comparisons test A/B p value 0.0001, A/C p value 0.0279, B/C p value 0.0230.

$\alpha\text{KG/succinate}$ ratio R162 experiment: $n = 5$, ordinary one-way ANOVA p -value 0.0368 (Brown-Forsythe test p -value 0.7828). Tukey's multiple comparisons test A/B p value 0.1215, A/C p value 0.7684, B/C p value 0.0364.

Figure 4f:

Npas4 gene expression level R162 experiment normalized to the gene expression level of the unstimulated control: $n = 7$, unpaired t -test with Welch's correction (F test p value 0.3443) p value (two-sided) 0.0131.

Bdnf gene expression level R162 experiment normalized to the gene expression level of the unstimulated control: $n = 7$, unpaired t -test with Welch's correction (F test p value 0.0208) p value (two-sided) 0.0136.

Supplementary Fig. 5d:

For each sample ($n = 3$ biologically independent samples), hmdC/dN and fdC/dN values were normalized to the GFP signal to balance different Tet3 expression levels between the samples (GFP-Tet3 A, GFP-Tet3 + 4 mM DM- αKG B, GFP-Tet3 + Gdh-FLAG C, GFP-Tet3 + Gdh-FLAG-NES), resulting in hmdC/(dN*RFU) and fdC/(dN*RFU).

For hmdC, ordinary one-way ANOVA p value 0.0209 (Brown-Forsythe test p value 0.6166). Tukey's multiple comparisons test A/B p value 0.6289, A/C p value 0.0103, A/D p value 0.1509.

For fdC, ordinary one-way ANOVA p value 0.0070 (Brown-Forsythe test p value 0.6725). Tukey's multiple comparisons test A/B p value 0.9942, A/C p value 0.0052, A/D p value 0.3030.

Details about the reproducibility. Figure 1b:

The preparation of the nuclear lysate from mESCs (4d primed) and total murine brain (4–5 weeks old wt BL6/J) was performed from two biologically independent samples/animals. These preparations were subsequently analyzed by western blotting against Tet1, Tet2, Tet3, and histone H3. Figure 1b shows representative western blots of this experiment.

Figure 2d:

coIP of endogenous Tet3 and a corresponding control coIP (using a non-targeting anti-goat antibody) was performed twice using two biologically independent nuclear lysate preparations from total murine brain (three months old wt BL6/J) and analyzed by western blotting. Figure 2d shows one representative blot of this experiment.

Figure 2e:

Tet3-Gdh PLA was performed in total four times using coronar cryo-sections of snap-frozen adult mouse brain from two biologically independent animals. Figure 2e shows one representative PLA result.

Figure 3a:

IHC/IF in hippocampus (Tet3 and Gdh) was performed in total four times using coronar cryo-sections of snap-frozen adult mouse brain from two biologically independent animals. IHC/IF in liver (Tet3 and Gdh) was performed two times using coronar cryo-sections of snap-frozen adult mouse liver from one animal. Figure 3a shows one representative IHC result.

Figure 3b:

Cell fractionation preparation from total murine brain (4–5 weeks old wt BL6/J) was performed from four biologically independent animals. These preparations were subsequently analyzed by western blotting. Figure 3b shows one representative western blot of this experiment.

Figure 3d:

GFP-Tet3 + Gdh-FLAG PLA or GFP + Gdh-FLAG PLA were performed twice in two biologically independent samples. Figure 3d shows one representative PLA result.

Figure 4b:

ICC/IF in GFP-Tet3 + Gdh-FLAG or GFP + Gdh-FLAG expressing HEK293T cells was performed three times using three biologically independent samples. Figure 4b shows one representative ICC result.

Figure 4c:

ICC/IF in FLAG₃-Tet3-T2A-Glud1 transfected or untransfected HEK293T cells was performed three times using three biologically independent samples. Figure 4c shows one representative ICC result.

Figure 4g:

Tet3-NPC PLA and Gdh-NPC PLA were performed twice using coronar cryosections of snap-frozen adult mouse brain from one animal. Figure 4g shows one representative PLA result.

Reporting summary. Further information on research design is available in the Nature Research Reporting Summary linked to this article.

Data availability

All datasets generated and analyzed during the current study are available from the corresponding author on reasonable request. Source data are provided with this paper. Proteomics data accession: The mass spectrometry proteomics data have been deposited to the ProteomeXchange Consortium via the PRIDE partner repository with the dataset identifier [PXD004518](https://doi.org/10.26434/chemrxiv-2021-07-01). The metabolomics data have been deposited to the MetaboLights repository⁷⁵ with the dataset identifier [MTBLS2852](https://doi.org/10.26434/chemrxiv-2021-07-01). Source data are provided with this paper.

Received: 5 March 2021; Accepted: 11 June 2021;

Published online: 02 July 2021

References

- Kriaucionis, S. & Heintz, N. The nuclear DNA base 5-hydroxymethylcytosine is present in Purkinje neurons and the brain. *Science* **324**, 929–930 (2009).
- Tahiliani, M. et al. Conversion of 5-methylcytosine to 5-hydroxymethylcytosine in mammalian DNA by MLL partner TET1. *Science* **324**, 930–935 (2009).
- Ito, S. et al. Role of Tet proteins in 5mC to 5hmC conversion, ES-cell self-renewal and inner cell mass specification. *Nature* **466**, 1129–1133 (2010).
- Chen, K., Zhao, Boxuan, S. & He, C. Nucleic acid modifications in regulation of gene expression. *Cell Chem. Biol.* **23**, 74–85 (2016).
- Lu, X., Zhao, B. S. & He, C. TET family proteins: oxidation activity, interacting molecules, and functions in diseases. *Chem. Rev.* **115**, 2225–2239 (2015).
- Ehrlich, M. & Ehrlich, K. C. DNA cytosine methylation and hydroxymethylation at the borders. *Epigenomics* **6**, 563–566 (2014).
- Traube, F. R. & Carell, T. The chemistries and consequences of DNA and RNA methylation and demethylation. *RNA Biol.* **14**, 1099–1107 (2017).
- Carell, T., Kurz, M. Q., Müller, M., Rossa, M. & Spada, F. Non-canonical bases in the genome: the regulatory information layer in DNA. *Angew. Chem. Int. Ed. Engl.* **57**, 4296–4312 (2018).
- Globisch, D. et al. Tissue distribution of 5-hydroxymethylcytosine and search for active demethylation intermediates. *PLoS ONE* **5**, e15367 (2010).
- Wagner, M. et al. Age-dependent levels of 5-methyl-, 5-hydroxymethyl-, and 5-formylcytosine in human and mouse brain tissues. *Angew. Chem. Int. Ed. Engl.* **54**, 12511–12514 (2015).
- Khare, T. et al. 5-hmC in the brain is abundant in synaptic genes and shows differences at the exon-intron boundary. *Nat. Struct. Mol. Biol.* **19**, 1037–1043 (2012).
- Szwagierczak, A., Bultmann, S., Schmidt, C. S., Spada, F. & Leonhardt, H. Sensitive enzymatic quantification of 5-hydroxymethylcytosine in genomic DNA. *Nucleic Acids Res.* **38**, e181 (2010).
- Guo, J. U. et al. Neuronal activity modifies DNA methylation landscape in the adult brain. *Nat. Neurosci.* **14**, 1345–1351 (2011).
- Yu, H. et al. Tet3 regulates synaptic transmission and homeostatic plasticity via DNA oxidation and repair. *Nat. Neurosci.* **18**, 836–843 (2015).
- Zdzisińska, B., Żurek, A. & Kandefers-Szerszeń, M. Alpha-ketoglutarate as a molecule with pleiotropic activity: well-known and novel possibilities of therapeutic use. *Arch. Immunol. Ther. Exp.* **65**, 21–36 (2017).
- Yang, Q. et al. AMPK/α-ketoglutarate axis dynamically mediates DNA demethylation in the Prdm16 promoter and brown adipogenesis. *Cell Metab.* **24**, 542–554 (2016).
- Park, J. O. et al. Metabolite concentrations, fluxes and free energies imply efficient enzyme usage. *Nat. Chem. Biol.* **12**, 482–489 (2016).
- TeSlaa, T. et al. alpha-ketoglutarate accelerates the initial differentiation of primed human pluripotent stem cells. *Cell Metab.* **24**, 485–493 (2016).
- Carey, B. W., Finley, L. W., Cross, J. R., Allis, C. D. & Thompson, C. B. Intracellular alpha-ketoglutarate maintains the pluripotency of embryonic stem cells. *Nature* **518**, 413–416 (2015).
- Mews, P. et al. Acetyl-CoA synthetase regulates histone acetylation and hippocampal memory. *Nature* **546**, 381–386 (2017).
- Sutendra, G. et al. A nuclear pyruvate dehydrogenase complex is important for the generation of acetyl-CoA and histone acetylation. *Cell* **158**, 84–97 (2014).
- Boukouris, A. E., Zervopoulos, S. D. & Michelakis, E. D. Metabolic enzymes moonlighting in the nucleus: metabolic regulation of gene transcription. *Trends Biochem. Sci.* **41**, 712–730 (2016).
- Featherstone, D. E. Intercellular glutamate signaling in the nervous system and beyond. *ACS Chem. Neurosci.* **1**, 4–12 (2010).
- Fasolino, M., Welsh, S. A. & Zhou, Z. TET and 5hmC in neurodevelopment and the adult brain, in *DNA modifications in the brain*. (ed. Bredy, T. W.) 61–79 (Academic Press is an imprint of Elsevier, London, United Kingdom, 2017).
- Kaas, G. A. et al. TET1 controls CNS 5-methylcytosine hydroxylation, active DNA demethylation, gene transcription, and memory formation. *Neuron* **79**, 1086–1093 (2013).
- Tan, L. & Shi, Y. G. Tet family proteins and 5-hydroxymethylcytosine in development and disease. *Development* **139**, 1895–1902 (2012).
- Dawlaty, M. M. et al. Combined deficiency of Tet1 and Tet2 causes epigenetic abnormalities but is compatible with postnatal development. *Dev. Cell* **24**, 310–323 (2013).
- Beck, D. B. et al. Delineation of a human mendelian disorder of the DNA demethylation machinery: TET3 deficiency. *Am. J. Hum. Genet.* **106**, 234–245 (2020).
- Laukka, T. et al. Fumarate and succinate regulate expression of hypoxia-inducible genes via TET enzymes. *J. Biol. Chem.* **291**, 4256–4265 (2016).
- Liu, N. et al. Intrinsic and extrinsic connections of Tet3 dioxygenase with CXXC zinc finger modules. *PLoS ONE* **8**, e62755 (2013).
- Cox, J. et al. Accurate proteome-wide label-free quantification by delayed normalization and maximal peptide ratio extraction, termed MaxLFQ. *Mol. Cell. Proteom.* **13**, 2513–2526 (2014).
- Bauer, C. et al. Phosphorylation of TET proteins is regulated via O-GlcNAcylation by the O-linked N-acetylglucosamine transferase (OGT). *J. Biol. Chem.* **290**, 4801–4812 (2015).
- Deplus, R. et al. TET2 and TET3 regulate GlcNAcylation and H3K4 methylation through OGT and SET1/COMPASS. *EMBO J.* **32**, 645–655 (2013).
- Ito, R. et al. TET3-OGT interaction increases the stability and the presence of OGT in chromatin. *Genes Cells* **19**, 52–65 (2014).
- Plaitakis, A., Kalef-Ezra, E., Kotzamani, D., Zaganas, I. & Spanaki, C. The glutamate dehydrogenase pathway and its roles in cell and tissue biology in health and disease. *Biology* **6**, 11 (2017).
- Hohnholt, M. C. et al. Glutamate dehydrogenase is essential to sustain neuronal oxidative energy metabolism during stimulation. *J. Cereb. Blood Flow. Metab.* **38**, 1754–1768 (2017).
- Mastorodemos, V. et al. Human GLUD1 and GLUD2 glutamate dehydrogenase localize to mitochondria and endoplasmic reticulum. *Biochem. Cell Biol.* **87**, 505–516 (2009).
- Spinelli, J. B. et al. Metabolic recycling of ammonia via glutamate dehydrogenase supports breast cancer biomass. *Science* **358**, 941 (2017).
- Braissant, O., McLin, V. A. & Cudalbu, C. Ammonia toxicity to the brain. *J. Inherit. Metab. Dis.* **36**, 595–612 (2013).
- Kostidis, S., Addie, R. D., Morreau, H., Mayboroda, O. A. & Giera, M. Quantitative NMR analysis of intra- and extracellular metabolism of mammalian cells: a tutorial. *Anal. Chim. Acta* **980**, 1–24 (2017).
- Cooper, A. J. L. 13N as a tracer for studying glutamate metabolism. *Neurochem. Int.* **59**, 456–464 (2011).
- Söderberg, O. et al. Characterizing proteins and their interactions in cells and tissues using the in situ proximity ligation assay. *Methods* **45**, 227–232 (2008).
- Perera, A. et al. TET3 is recruited by REST for context-specific hydroxymethylation and induction of gene expression. *Cell Rep.* **11**, 283–294 (2015).
- Karaca, M. et al. Liver glutamate dehydrogenase controls whole-body energy partitioning through amino acid-derived gluconeogenesis and ammonia homeostasis. *Diabetes* **67**, 1949–1961 (2018).
- Traube, F. R. et al. Isotope-dilution mass spectrometry for exact quantification of noncanonical DNA nucleosides. *Nat. Protoc.* **14**, 283–312 (2019).
- Jin, L. et al. Glutamate dehydrogenase 1 signals through antioxidant glutathione peroxidase 1 to regulate redox homeostasis and tumor growth. *Cancer Cell* **27**, 257–270 (2015).
- Hurh, S. et al. Expression analysis of combinatorial genes using a Bi-cistronic T2A expression system in porcine fibroblasts. *PLoS ONE* **8**, e70486 (2013).
- Liu, Z. et al. Systematic comparison of 2A peptides for cloning multi-genes in a polycistronic vector. *Sci. Rep.* **7**, 2193 (2017).
- Bading, H., Ginty, D. D. & Greenberg, M. E. Regulation of gene expression in hippocampal neurons by distinct calcium signaling pathways. *Science* **260**, 181 (1993).

50. Yang, C. et al. Glutamine oxidation maintains the TCA cycle and cell survival during impaired mitochondrial pyruvate transport. *Mol. Cell* **56**, 414–424 (2014).
51. Kowiański, P. et al. BDNF: a key factor with multipotent impact on brain signaling and synaptic plasticity. *Cell. Mol. Neurobiol.* **38**, 579–593 (2018).
52. Sun, X. & Lin, Y. Npas4: linking neuronal activity to memory. *Trends Neurosci.* **39**, 264–275 (2016).
53. Sexton, T., Schober, H., Fraser, P. & Gasser, S. M. Gene regulation through nuclear organization. *Nat. Struct. Mol. Biol.* **14**, 1049 (2007).
54. Chen, C., Ding, X., Akram, N., Xue, S. & Luo, S.-Z. Fused in sarcoma: properties, self-assembly and correlation with neurodegenerative diseases. *Molecules* **24**, 1622 (2019).
55. Lai, J. C., Sheu, K. F., Kim, Y. T., Clarke, D. D. & Blass, J. P. The subcellular localization of glutamate dehydrogenase (GDH): is GDH a marker for mitochondria in brain? *Neurochem. Res.* **11**, 733–744 (1986).
56. Nagaraj, R. et al. Nuclear localization of mitochondrial TCA cycle enzymes as a critical step in mammalian zygotic genome activation. *Cell* **168**, 210–223 e211 (2017).
57. Nikiforov, A., Kulikova, V. & Ziegler, M. The human NAD metabolome: functions, metabolism and compartmentalization. *Crit. Rev. Biochem. Mol. Biol.* **50**, 284–297 (2015).
58. Ryu, K. W. et al. Metabolic regulation of transcription through compartmentalized NAD⁺ biosynthesis. *Science* **360**, eaan5780 (2018).
59. Müller, U., Bauer, C., Siegl, M., Rottach, A. & Leonhardt, H. TET-mediated oxidation of methylcytosine causes TDG or NEIL glycosylase dependent gene reactivation. *Nucleic Acids Res.* **42**, 8592–8604 (2014).
60. Xu, D., Farmer, A., Collett, G., Grishin, N. V. & Chook, Y. M. Sequence and structural analyses of nuclear export signals in the NESdb database. *Mol. Biol. Cell* **23**, 3677–3693 (2012).
61. Guillemin, I., Becker, M., Ociepka, K., Friauf, E. & Nothwang, H. G. A subcellular prefractionation protocol for minute amounts of mammalian cell cultures and tissue. *Proteomics* **5**, 35–45 (2005).
62. Iwan, K. et al. 5-Formylcytosine to cytosine conversion by C–C bond cleavage in vivo. *Nat. Chem. Biol.* **14**, 72–78 (2017).
63. Dignam, J. D., Lebovitz, R. M. & Roeder, R. G. Accurate transcription initiation by RNA polymerase II in a soluble extract from isolated mammalian nuclei. *Nucleic Acids Res.* **11**, 1475–1489 (1983).
64. Kulak, N. A., Pichler, G., Paron, I., Nagaraj, N. & Mann, M. Minimal, encapsulated proteomic-sample processing applied to copy-number estimation in eukaryotic cells. *Nat. Methods* **11**, 319–324 (2014).
65. Cox, J. & Mann, M. MaxQuant enables high peptide identification rates, individualized p.p.b.-range mass accuracies and proteome-wide protein quantification. *Nat. Biotechnol.* **26**, 1367–1372 (2008).
66. Vizcaino, J. A. et al. 2016 update of the PRIDE database and its related tools. *Nucleic Acids Res.* **44**, D447–D456 (2016).
67. Murty, K. V. S. N., Pal, R., Datta, K. & Mal, D. Glucose promoted claisen rearrangement of 1-Allyloxy anthraquinones. *Synth. Commun.* **24**, 1287–1292 (1994).
68. Sharghi, H. & Aghapour, G. Claisen rearrangement of allyloxanthraquinones with silver/potassium iodide in acetic acid as a new and efficient reagent. *J. Org. Chem.* **65**, 2813–2815 (2000).
69. Kleppisch, T. et al. Long-term potentiation in the hippocampal CA1 region of mice lacking cGMP-dependent kinases is normal and susceptible to inhibition of nitric oxide synthase. *J. Neurosci.* **19**, 48–55 (1999).
70. Michalakakis, S. et al. Altered synaptic plasticity and behavioral abnormalities in CNGA3-deficient mice. *Genes Brain Behav.* **10**, 137–148 (2011).
71. Pfaffl, M. W. A new mathematical model for relative quantification in real-time RT-PCR. *Nucleic Acids Res.* **29**, e45 (2001).
72. Pfaffl, M. W., Horgan, G. W. & Dempfle, L. Relative expression software tool (REST) for group-wise comparison and statistical analysis of relative expression results in real-time PCR. *Nucleic Acids Res.* **30**, e36 (2002).
73. Ramamoorthi, K. et al. Npas4 regulates a transcriptional program in CA3 required for contextual memory formation. *Science* **334**, 1669–1675 (2011).
74. Ma, D. K. et al. Neuronal activity-induced Gadd45b promotes epigenetic DNA demethylation and adult neurogenesis. *Science* **323**, 1074–1077 (2009).
75. Haug, K. et al. MetaboLights: a resource evolving in response to the needs of its scientific community. *Nucleic Acids Res.* **48**, D440–D444 (2019).

Acknowledgements

F.R.T. thanks the Boehringer Ingelheim Fonds for a PhD fellowship and A.F.G. was supported by a fellowship from the Peter und Traudl Engelhorn-Stiftung. We thank

Heinrich Leonhardt (LMU München) for providing GFP-Tet plasmids and we thank Sarah Schiffrers for blind analysis of UHPLC-QQQ-MS data, Kristof Hufnagel for help with cell culture experiments, and Antony Crisp for comments on the manuscript. We thank the Deutsche Forschungsgemeinschaft for financial support through the programs: CRC1309 (325871075) and CRC1361 (393547839), as well as the DFG Priority program SPP1784 (255344185). This project has received funding from the European Research Council (ERC) under the European Union's Horizon 2020 research and innovation program under grant agreement No 741912 (ERC-ADG, EpiR) and from the European Union's Horizon 2020 research and innovation program under the Marie Skłodowska-Curie grant agreement No 861381 (Nature-ETN).

Author contributions

F.R.T. designed experiments, performed and analyzed Tet3-endogenous coIP, performed and analyzed western blots, IHC/ICC experiments, PLAs, UHPLC-QQQ-MS experiments, in vitro activity assays, RT-qPCR, helped with depolarization experiments of hippocampal slices and interpreted data. D.Ö. performed and analyzed IHC/ICC experiments and PLAs, helped with western blots and in vitro activity assays, and designed the Gdh-FLAG-NES construct. H.S. designed the bicistronic vector for FLAG₃-Tet3/Gdh expression, performed and analyzed ICC experiments and western blots. C.S. performed depolarization experiments of acute hippocampal slices, dissected mouse brain and liver and prepared cryo-sections thereof, analyzed IHC/ICC experiments and performed and analyzed RT-qPCR experiments. A.F.G. designed proteomics experiments, developed the GFP-Tet3-enriched coIP workflow, performed and analyzed GFP-Tet3-enriched coIP and interpreted proteomics data. A.S.G. helped performing and analyzing IHC/ICC experiments and PLAs. S.O. helped with in vitro activity assays. S.K. performed and analyzed metabolomics experiments. K.I. helped performing and analyzing UHPLC-QQQ-MS experiments. R.R. synthesized R162. G.G. helped analyzing ICC experiments. M.M. and F.S. designed experiments and interpreted data. M.B. interpreted data. J.C. helped with analysis of proteomics data. M.G. supervised metabolomics experiments. S.M. designed and supervised experiments, performed depolarization experiments of acute hippocampal slices and interpreted data. T.C. designed and supervised the whole study and interpreted data. F.R.T. and T.C. wrote the manuscript with help from M.M. and S.M.

Funding

Open Access funding enabled and organized by Projekt DEAL.

Competing interests

The authors declare no competing interests.

Additional information

Supplementary information The online version contains supplementary material available at <https://doi.org/10.1038/s41467-021-24353-9>.

Correspondence and requests for materials should be addressed to S.M. or T.C.

Peer review information *Nature communications* thanks the anonymous reviewers for their contributions to the peer review of this work.

Reprints and permission information is available at <http://www.nature.com/reprints>

Publisher's note Springer Nature remains neutral with regard to jurisdictional claims in published maps and institutional affiliations.



Open Access This article is licensed under a Creative Commons Attribution 4.0 International License, which permits use, sharing,

adaptation, distribution and reproduction in any medium or format, as long as you give appropriate credit to the original author(s) and the source, provide a link to the Creative Commons license, and indicate if changes were made. The images or other third party material in this article are included in the article's Creative Commons license, unless indicated otherwise in a credit line to the material. If material is not included in the article's Creative Commons license and your intended use is not permitted by statutory regulation or exceeds the permitted use, you will need to obtain permission directly from the copyright holder. To view a copy of this license, visit <http://creativecommons.org/licenses/by/4.0/>.

© The Author(s) 2021