



Universiteit  
Leiden  
The Netherlands

## **Plasma protein N-glycosylation is associated with cardiovascular disease, nephropathy, and retinopathy in type 2 diabetes**

Memarian, E.; Hart, L.M. 't; Slieker, R.C.; Lemmers, R.F.L.; Heijden, A.A. van der; Rutters, F.; ... ; Dotz, V.

### **Citation**

Memarian, E., Hart, L. M. 't, Slieker, R. C., Lemmers, R. F. L., Heijden, A. A. van der, Rutters, F., ... Dotz, V. (2021). Plasma protein N-glycosylation is associated with cardiovascular disease, nephropathy, and retinopathy in type 2 diabetes. *Bmj Open Diabetes Research And Care*, 9(1). doi:10.1136/bmjdr-2021-002345





Version: Publisher's Version

License: [Creative Commons CC BY 4.0 license](#)

Downloaded from: <https://hdl.handle.net/1887/3243112>

**Note:** To cite this publication please use the final published version (if applicable).

# Plasma protein *N*-glycosylation is associated with cardiovascular disease, nephropathy, and retinopathy in type 2 diabetes

Elham Memarian,<sup>1,2</sup> Leen M 't Hart ,<sup>3,4,5</sup> Roderick C Sliker ,<sup>3,4</sup> Roosmarijn F L Lemmers,<sup>6</sup> Amber A van der Heijden,<sup>7</sup> Femke Rutters,<sup>8</sup> Giel Nijpels,<sup>7</sup> Emma Schoep,<sup>3</sup> Aloysius G Lieverse,<sup>9</sup> Eric J G Sijbrands,<sup>6</sup> Manfred Wuhrer,<sup>1</sup> Mandy van Hoek ,<sup>6</sup> Viktoria Dotz <sup>1</sup>

**To cite:** Memarian E, 't Hart LM, Sliker RC, *et al*. Plasma protein *N*-glycosylation is associated with cardiovascular disease, nephropathy, and retinopathy in type 2 diabetes. *BMJ Open Diab Res Care* 2021;**9**:e002345. doi:10.1136/bmjdr-2021-002345

► Additional supplemental material is published online only. To view, please visit the journal online (<http://dx.doi.org/10.1136/bmjdr-2021-002345>).

EM and LM'tH contributed equally.  
MvH and VD contributed equally.

Received 2 May 2021  
Accepted 29 September 2021



© Author(s) (or their employer(s)) 2021. Re-use permitted under CC BY. Published by BMJ.

For numbered affiliations see end of article.

## Correspondence to

Dr Mandy van Hoek;  
[m.vanhoek@erasmusmc.nl](mailto:m.vanhoek@erasmusmc.nl)

## ABSTRACT

**Introduction** Although associations of total plasma *N*-glycome (TPNG) with type 2 diabetes have been reported, little is known on the role of TPNG in type 2 diabetes complications, a major cause of type 2 diabetes-related morbidity and mortality. Here, we assessed TPNG in relation to type 2 diabetes complications in subsamples of two Dutch cohorts using mass spectrometry (n=1815 in DiaGene and n=1518 in Hoorn Diabetes Care System).

**Research design and methods** Blood plasma samples and technical replicates were pipetted into 96-well plates in a randomized manner. Peptide:*N*-glycosidase F (PNGase F) was used to release *N*-glycans, whereafter sialic acids were derivatized for stabilization and linkage differentiation. After total area normalization, 68 individual glycan compositions were quantified in total and were used to calculate 45 derived traits which reflect structural features of glycosylation. Associations of glycan features with prevalent and incident microvascular or macrovascular complications were tested in logistic and Cox regression in both independent cohorts and the results were meta-analyzed.

**Results** Our results demonstrated similarities between incident and prevalent complications. The strongest association for prevalent cardiovascular disease was a high level of bisection on a group of diantennary glycans (A2FS0B; OR=1.38,  $p=1.34 \times 10^{-11}$ ), while for prevalent nephropathy the increase in 2,6-sialylation on triantennary glycans was most pronounced (A3E; OR=1.28,  $p=9.70 \times 10^{-6}$ ). Several other TPNG features, including fucosylation, galactosylation, and sialylation, firmly demonstrated associations with prevalent and incident complications of type 2 diabetes.

**Conclusions** These findings may provide a glance on how TPNG patterns change before complications emerge, paving the way for future studies on prediction biomarkers and potentially disease mechanisms.

## INTRODUCTION

Type 2 diabetes is one of the most challenging health issues in the 21st century.<sup>1</sup> The main burden of the disease results from long-term microvascular and macrovascular

## Significance of this study

### What is already known about this subject?

- Despite extensive preventive efforts, a substantial residual risk of macrovascular and microvascular complications in type 2 diabetes remains.
- Plasma *N*-glycans have been associated with type 2 diabetes itself and multiple risk factors for its complications (eg, lipids, smoking, inflammation).

### What are the new findings?

- Fucosylation, galactosylation, sialylation, and bisection as main glycan features were associated with complications at baseline and follow-up.
- Of these, 13 and 15 features remained associated after false discovery rate correction for cardiovascular disease and nephropathy, respectively.
- Sialylation linkage type was associated with type 2 diabetes complications, showing positive associations for alpha2,6-linked and negative associations for alpha2,3-linked sialic acids.

### How might these results change the focus of research or clinical practice?

- To improve diagnostics and treatment, we need more insights into pathophysiology. Our findings link typical total plasma *N*-glycome patterns to the development of complications, paving the way for future studies on prediction biomarkers and potential therapeutic approaches.

complications. These are important causes of disability, reduced quality of life, and death. Current treatment to prevent complications consists of strict glycemic control and preventing cardiovascular disease (CVD), by measures such as changes in lifestyle, blood pressure control, and lipid level optimization. Unfortunately, a substantial residual risk remains.<sup>2</sup> The pathophysiology of type 2 diabetes and its complications is multifactorial and complex, involving genetic

susceptibility, various metabolic pathways, lifestyle, and environmental factors.<sup>1</sup> To design more effective prevention and treatment approaches, in-depth pathophysiological insights are urgently needed. Also, in order to have a more rapid and accurate diagnosis, understanding of early biomarkers of diabetes complications is beneficial.

As opposed to the passive glycation of hemoglobin A1c (HbA1c) and the rather static, inherited nucleic acid sequence in our DNA, glycosylation of proteins results from active, enzymatically controlled processes. Glycans are present on most human proteins and are synthesized through a concerted action of several hundreds of enzymes. They have different functions in human biology and reflect genetic, metabolic, and environmental factors. Since they are abundantly present and can influence almost every biological process through subtle changes in their structure, glycosylation changes are thought to be involved in every major disease.<sup>3,4</sup> Plasma *N*-glycans have been proposed as suitable candidates for disease biomarker research since they are very stable in healthy individuals over time,<sup>5,6</sup> but do reflect physiological, pathological, or lifestyle changes in an individual.<sup>3,4</sup>

Plasma *N*-glycans have already been linked to metabolic syndrome, obesity, plasma lipid levels, blood pressure, smoking habits, inflammatory diseases, and type 2 diabetes itself.<sup>7–12</sup>

The association of the plasma *N*-glycome with complications, that is, retinopathy, nephropathy, and CVD, in type 2 diabetes has been sparsely investigated. Wittenbecher *et al*<sup>13</sup> researched the ability of the plasma *N*-glycome to predict the incidence of type 2 diabetes and CVD and demonstrated that *N*-glycan predictors of cardiovascular endpoints only partially overlapped with those related to type 2 diabetes. Also, *N*-glycan profiles of patients with type 2 diabetes and subjects with metabolic syndrome showed changes in the presence of macrovascular complications.<sup>14</sup> Here, we aimed to gain a deeper insight into the total plasma *N*-glycome (TPNG) in prevalent and incident retinopathy, nephropathy, and CVD in two large independent prospective cohorts of patients with type 2 diabetes, employing a novel, high-resolution analytical technique employing mass spectrometric detection of 68 different glycan structures.

## RESEARCH DESIGN AND METHODS

Details on the cohorts, including definitions and biochemical measurements, have been described elsewhere.<sup>15,16</sup>

### Study populations

#### DiaGene study

The DiaGene study is a case–control study on type 2 diabetes from the region of Eindhoven, the Netherlands, and has previously been described in detail elsewhere.<sup>15</sup> In total, 1886 cases and 854 controls were enrolled, with cases from both primary and secondary care. For the current study, only cases were included. Cases included

in the current analyses have a mean follow-up of 7.0 years (95% CI 6.9 to 7.1, IQR 2.2).

#### Hoorn Diabetes Care System study

The Hoorn Diabetes Care System (Hoorn DCS) study has been described in detail elsewhere.<sup>16</sup> In short, primary care patients with type 2 diabetes from the region of West Friesland in the Netherlands visited the DCS research center annually for routine diabetes care (n~14 000). Biobanking materials, anthropometric, clinical, biochemical, and data on annual examinations for microvascular and macrovascular complications have been collected for ~6000 persons who agreed to participate in the DCS biobanks.<sup>16</sup> For this particular study, we randomly chose plasma samples of 1600 subjects who donated a sample in 2008/2009. The median follow-up was 8.5 years with a 95% CI of 2.1 to 9.2 and an IQR of 1.8.

The clinical characteristics of both cohorts are shown in table 1. Detailed characteristics of those with prevalent or incident complications are shown in online supplemental tables 1 and 2.

### Definitions

#### Type 2 diabetes

For both studies, the diagnosis of type 2 diabetes was defined in accordance with the American Diabetes Association (ADA) and WHO guidelines.<sup>17,18</sup> Persons diagnosed with type 1 diabetes and other types of diabetes were excluded.

#### Retinopathy, nephropathy, and CVD

The definitions for microvascular and macrovascular events in the DiaGene and DCS study populations have been described previously.<sup>15,16</sup> In short, for both studies, retinopathy was scored and graded according to the report of an ophthalmologist and fundus photography and for the current analyses scored as present or absent. Nephropathy was defined as microalbuminuria (albumin to creatinine ratio (ACR)  $\geq 2.5$  for men or  $\geq 3.5$  for women) present at two of three consecutive measurements, or when high microalbuminuria or macroalbuminuria was present at one measurement (ACR  $\geq 12.5$  for men or  $\geq 17.5$  for women). CVD was defined as myocardial infarction, percutaneous coronary intervention/coronary arterial bypass graft, cerebrovascular accident, transient ischemic attack, and peripheral arterial disease as derived from medical records and questionnaires.<sup>15,16</sup>

#### *N*-glycome analysis and data quality control

The analysis method of the TPNG as applied on the DiaGene cohort has been previously described.<sup>9,19</sup> Samples from the Hoorn DCS cohort were analyzed using a recently improved method,<sup>20</sup> as described in detail elsewhere.<sup>21</sup> In short, blood plasma samples were randomized over 96-well plates together with technical replicates, and glycans were released from proteins using the enzyme Peptide:N-glycosidase F (PNGase F). After glycan stabilization by sialic acid derivatization, released glycans were purified and spotted using an automated

**Table 1** Hoorn DCS and DiaGene cohort characteristics

|   | DiaGene         | Hoorn DCS       |
|---|-----------------|-----------------|
| Number of participants                            | 1815            | 1518            |
| Female sex, % (n)                                 | 46.3 (841)      | 43.7 (664)      |
| Age, years, mean ( $\pm$ SD)                      | 65.2 (10.6)     | 64.5 (10.6)     |
| Age of onset diabetes, years, mean ( $\pm$ SD)    | 54.9 (11.7)     | 57.3 (11.0)     |
| BMI, kg/m <sup>2</sup> , mean ( $\pm$ SD)         | 29.5 (5.5)      | 30.4 (5.4)      |
| HbA1c, % (SD)                                     | 7.0 (1.1)       | 6.8 (1.0)       |
| HbA1c, mmol/mol, mean ( $\pm$ SD)                 | 53.3 (11.6)     | 51 (11)         |
| Systolic blood pressure, mm Hg, mean ( $\pm$ SD)  | 141.9 (18.8)    | 144 (19)        |
| Diastolic blood pressure, mm Hg, mean ( $\pm$ SD) | 77.4 (9.9)      | 76 (10)         |
| Total cholesterol, mmol/L, mean ( $\pm$ SD)       | 4.3 (0.9)       | 4.6 (1.7)       |
| Triglycerides, mmol/L, median (IQR)               | 1.4 (1.0–2.0)   | 1.6 (1.2–2.2)   |
| HDL-c, mmol/L, mean ( $\pm$ SD)                   | 1.2 (0.3)       | 1.2 (0.4)       |
| LDL-c, mmol/L, mean ( $\pm$ SD)                   | 2.5 (0.8)       | 2.6 (0.9)       |
| Non-HDL-c, mmol/L, mean ( $\pm$ SD)               | 3.1 (0.9)       | 3.5 (1.5)       |
| Smoking   |                 |                 |
| Never (n)   | 425             | 926             |
| Former (n)  | 924             | 334             |
| Current (n)                                       | 294             | 258             |
| Complications                                     |                 |                 |
| Incident CVD, % (n case/n total)                  | 10.1 (104/1034) | 8.0 (97/1220)   |
| Prevalent CVD, % (n case/n total)                 | 34.6 (628/1669) | 19.0 (288/1518) |
| Incident nephropathy, % (n case/n total)          | 20.1 (244/1214) | 12.4 (158/1272) |
| Prevalent nephropathy, % (n case/n total)         | 20.2 (367/1621) | 15.5 (236/1518) |
| Incident retinopathy, % (n case/n total)          | 16.1 (219/1361) | 9.9 (126/1278)  |
| Prevalent retinopathy, % (n case/n total)         | 16.0 (291/1714) | 14.2 (214/1503) |

Details on the cohorts, including definitions and biochemical measurements, have been described elsewhere.<sup>15 16</sup>

BMI, body mass index; CVD, cardiovascular disease; DCS, Diabetes Care System; HbA1c, hemoglobin A1c; HDL-c, high-density lipoprotein cholesterol; LDL-c, low-density lipoprotein cholesterol.

liquid handling platform. TPNG was measured by mass spectrometry employing matrix-assisted laser desorption/ionization with time-of-flight (DiaGene) or Fourier-transform ion cyclotron resonance (Hoorn DCS) analyzer. Mass spectra in both cohorts were checked for quality and excluded in case of low intensity. The intensity sum of 73 (DiaGene) or 68 (Hoorn DCS) directly measured glycan compositions was normalized to one. Seventy (DiaGene) and 68 (Hoorn DCS) direct glycan compositions were further used to calculate 45 derived traits based on their structural similarities (online supplemental table 3). Batch correction was then performed using the ComBat package in R. A total of 1815 DiaGene and 1518 DCS samples passed quality control and were used in the statistical analyses. By using pooled plasma replicates which were randomized over 96-well plates together with the clinical samples, method precision was assessed. Relative SDs of derived traits are reported in online supplemental table 3 and were on average 5.92% in DiaGene and 4.40% in DCS.

### Statistical analyses

Statistical analyses were done in R statistics V.3.6.0. Missing data on covariates (body mass index (BMI), high-density lipoprotein-cholesterol (HDL-c), non-HDL-c, systolic blood pressure, HbA1c, smoking, diabetes duration, and creatinine) were imputed using multivariate imputation by chained equations (R package MICE).<sup>22</sup> When possible, clinical covariates from the year before and after the missing value were added to improve the imputation quality. The maximum count of imputations per variable was 172 in DiaGene and 20 in Hoorn DCS; all imputed variables had <7% missing values. The clinical characteristics after imputation are shown in online supplemental tables 4 and 5. The plasma N-glycans were Z-scaled before analysis to facilitate meta-analysis of both cohorts. Logistic regression models and Cox proportional hazards models served to analyze the prevalent and incident associations of the N-glycan traits (as independent variables) and retinopathy, nephropathy, and CVD as dependent variables, respectively. All analyses were corrected for age, sex, and



their interaction (basic model or model 1). A full model was additionally corrected for BMI, HDL-c, non-HDL-c, systolic blood pressure, diabetes duration, HbA1c, and smoking for the nephropathy endpoint. In addition, correction for creatinine levels was included for retinopathy and CVD analyses. Non-HDL-c was calculated as total cholesterol minus HDL-c. Smoking comprised information on current, former, and never smoking. Heterogeneity between cohorts was also evaluated using  $I^2$  values as described previously.<sup>23</sup> To summarize the results of the two independent cohorts, random-effects meta-analysis was performed on the entire set of 45 traits, including significant and non-significant associations using the R package meta.<sup>24</sup> Correction for multiple testing with the Benjamini-Hochberg method<sup>25</sup> at a false discovery rate (FDR) of 5% was applied. FDR-adjusted  $p$  values <0.05 were regarded as significant, unless explicitly stated as nominally significant  $p$  values.

## RESULTS

### Cohort characteristics

In both cohorts combined, a total of 916 and 407 persons had prevalent and incident CVD, respectively. Six hundred and three persons had prevalent and 832 developed incident nephropathy, and 505 and 572 individuals with prevalent and incident retinopathy were included, respectively.

Details on the clinical characteristics of both studies are shown in [table 1](#) and further details can be found in online supplemental tables 1 and 2. Correlations between  $N$ -glycan traits showed similar patterns for both cohorts (online supplemental figure 1). Bisection, except for bisecting  $N$ -acetylglucosamine within fucosylated non-sialylated diantennary glycans (A2FS0B), was mostly positively correlated with fucosylation and negatively correlated with galactosylation. Alpha2,6-sialylation of diantennary glycans (A2E) was negatively correlated with diantennary fucosylation (A2F, A2L0F), next to several positive correlations between structurally similar traits and negative correlations between complementary traits, such as  $\alpha$ 2,6-sialylation versus  $\alpha$ 2,3-sialylation. In the following, only meta-analyzed results are presented; however, the original outputs from the regression analyses per cohort can be provided by the corresponding author on request.

### Plasma $N$ -glycome associations with CVD

At baseline, after age and sex correction (model 1), 13  $N$ -glycans were associated with prevalent CVD (online supplemental table 6). One of the strongest associations found was for species with bisecting  $N$ -acetylglucosamine within fucosylated non-sialylated diantennary glycans (A2FS0B) (OR=1.38,  $p=1.34\times 10^{-11}$ ; online supplemental table 6, [table 2](#) and [figure 1A](#)). Alpha2,3-linked sialylation, for example, A3L and A4F0GL, and diantennary fucosylated glycans (A2F and A2EF) were lower, while  $\alpha$ 2,6-linked sialylation in triantennary and tetra-antennary

glycans (A3E and A4F0GE) was higher in patients with CVD. Moreover, A2FS0B, A4F0GE, A4E, A2E0F, A2S0F, A4F0GL, and A4L remained significant in the full model (online supplemental table 7 and online supplemental figure 2A).

In Cox regression analysis for incident CVD, none of the nominally significant associations remained significant after FDR correction (online supplemental tables 6 and 7). When comparing the associations of prevalent and incident CVD in model 1, the three nominally significant traits at follow-up, that is, A4F0GE, A4F0GL, and A4L, showed similar trends and effect sizes to the associations found at baseline ([figure 1A](#) and [table 2](#)).

For comparison, the last two columns in [table 2](#) show the associations of  $N$ -glycan traits with type 2 diabetes derived from Singh *et al.*<sup>21</sup>

### Plasma $N$ -glycome associations with nephropathy

In logistic regression model 1, 15 derived traits were associated with prevalent nephropathy, overall showing increased  $\alpha$ 2,6-sialylation, bisection and glycan branching, and decreased  $\alpha$ 2,3-sialylation and IgG-related galactosylation ([table 2](#) and online supplemental table 8). The strongest association was observed for  $\alpha$ 2,6-sialylation of triantennary glycans (A3E) (OR=1.28,  $p=9.70\times 10^{-6}$ ). Adding covariates in the full model did affect  $p$  values and effect sizes when compared with model 1, but did not alter the direction of the associations (online supplemental table 9 and online supplemental figure 2B).

In Cox regression model 1, the derived traits A2FS0G and A2FGS were associated with incident nephropathy ([table 2](#)). In the full model, A2FS0G and A2FGS were only nominally significant, in addition to the ratio of high-mannose to hybrid glycans (MHy), A3S, and A2F0GS (online supplemental tables 8 and 9). Overall, glycan trait associations showed similar trends and correlated between prevalent and incident nephropathy in model 1 ([figure 1B](#) and [table 2](#)).

### Plasma $N$ -glycome associations with retinopathy

In the basic model, MHy was associated with prevalent retinopathy (OR=0.79,  $p=4.68\times 10^{-2}$ ) ([table 2](#) and [figure 1C](#)). In the full model, no associations with prevalent retinopathy were found (online supplemental figure 2C).

In Cox regression analysis for incident retinopathy, only nominally significant associations were found in both models (online supplemental tables 10 and 11). Overall, MHy showed similar effect sizes for prevalent and incident retinopathy in model 1 ([figure 1C](#) and [table 2](#)).

## DISCUSSION

In our analyses on the associations of TPNG with prevalent and incident type 2 diabetes complications in two large independent cohorts, we found multiple associated traits, with similar patterns in both cohorts. The strongest associations were demonstrated for CVD and nephropathy, with increased bisection of IgG-related glycans, increased

**Table 2** Meta-analyzed associations of selected plasma N-glycans with type 2 diabetes complications and with type 2 diabetes

| Derived traits                   | Description†  | Cardiovascular disease |                              |                |         | Nephropathy          |                             |                |                             | Retinopathy          |              |                |         | Type 2 diabetes vs healthy controls* |                              |
|----------------------------------|---|------------------------|------------------------------|----------------|---------|----------------------|-----------------------------|----------------|-----------------------------|----------------------|--------------|----------------|---------|--------------------------------------|------------------------------|
|                                  |   | Prevalent (logistic)   |                              | Incident (cox) |         | Prevalent (logistic) |                             | Incident (cox) |                             | Prevalent (logistic) |              | Incident (cox) |         | OR                                   | p value                      |
|                                  |   | OR                     | p value                      | HR             | p value | OR                   | p value                     | HR             | p value                     | OR                   | p value      | HR             | p value |                                      |                              |
| Complexity                       |   |                        |                              |                |         |                      |                             |                |                             |                      |              |                |         |                                      |                              |
| MHY                              | Ratio of high-mannose to hybrid glycans.                      | 1.01                   | 0.903                        | 0.99           | 0.947   | 0.82                 | <b>1.20×10<sup>-3</sup></b> | 0.87           | 0.089                       | 0.79                 | <b>0.047</b> | 0.82           | 0.292   | 0.86                                 | 0.213                        |
| CA2                              | Relative abundance of A2 glycans within complex-type glycans. | 0.92                   | 0.104                        | 0.98           | 0.947   | 0.89                 | <b>0.046</b>                | 0.99           | 0.962                       | 1.02                 | 0.921        | 1.07           | 0.385   | 0.85                                 | <b>6.09×10<sup>-3</sup></b>  |
| CA3                              | Relative abundance of A3 glycans within complex-type glycans. | 1.09                   | 0.104                        | 1.04           | 0.808   | 1.12                 | <b>0.046</b>                | 1.00           | 0.998                       | 0.98                 | 0.922        | 0.92           | 0.370   | 1.21                                 | <b>1.39×10<sup>-3</sup></b>  |
| Fucosylation (F)                 |   |                        |                              |                |         |                      |                             |                |                             |                      |              |                |         |                                      |                              |
| A2E0F                            | In A2 glycans without α2,6-linked sialic acid.                | 0.86                   | <b>2.23×10<sup>-3</sup></b>  | 0.94           | 0.718   | 0.95                 | 0.527                       | 0.99           | 0.962                       | 0.95                 | 0.543        | 1.02           | 0.854   | 0.76                                 | <b>3.73×10<sup>-6</sup></b>  |
| A2L0F                            | In A2 glycans without α2,3-linked sialic acid.                | 0.90                   | <b>0.049</b>                 | 0.94           | 0.718   | 0.96                 | 0.821                       | 0.99           | 0.962                       | 1.06                 | 0.543        | 1.10           | 0.385   | 0.79                                 | <b>1.94×10<sup>-5</sup></b>  |
| A2S0F                            | In non-sialylated A2.   | 0.88                   | <b>0.013</b>                 | 0.96           | 0.752   | 0.94                 | 0.383                       | 1.02           | 0.962                       | 0.97                 | 0.902        | 1.01           | 0.944   | 0.86                                 | <b>0.010</b>                 |
| Bisection (B)                    |   |                        |                              |                |         |                      |                             |                |                             |                      |              |                |         |                                      |                              |
| A2FS0B                           | In fucosylated non-sialylated A2.                             | 1.38                   | <b>1.34×10<sup>-11</sup></b> | 1.01           | 0.947   | 1.18                 | <b>5.35×10<sup>-3</sup></b> | 1.12           | 0.229                       | 1.03                 | 0.921        | 1.06           | 0.440   | 1.54                                 | <b>1.98×10<sup>-12</sup></b> |
| A2F0S0B                          | In non-fucosylated non-sialylated A2.                         | 1.13                   | 0.180                        | 0.94           | 0.718   | 1.15                 | <b>0.014</b>                | 1.17           | 0.282                       | 0.99                 | 0.974        | 1.10           | 0.337   | 1.16                                 | <b>0.011</b>                 |
| Galactosylation (G)              |   |                        |                              |                |         |                      |                             |                |                             |                      |              |                |         |                                      |                              |
| A2FS0G                           | In fucosylated non-sialylated A2.                             | 0.89                   | <b>0.049</b>                 | 0.89           | 0.626   | 0.82                 | <b>2.09×10<sup>-3</sup></b> | 0.81           | <b>0.0110</b>               | 0.94                 | 0.543        | 0.87           | 0.385   | 0.86                                 | <b>0.014</b>                 |
| Sialylation (S)                  |   |                        |                              |                |         |                      |                             |                |                             |                      |              |                |         |                                      |                              |
| A4FGS                            | Per galactose in fucosylated A4.                              | 0.89                   | <b>0.040</b>                 | 0.91           | 0.626   | 0.91                 | 0.320                       | 1.01           | 0.962                       | 1.00                 | 1.00         | 0.97           | 0.854   | 0.80                                 | <b>1.03×10<sup>-4</sup></b>  |
| A2FGS                            | Per galactose in fucosylated A2.                              | 1.12                   | <b>0.041</b>                 | 1.20           | 0.626   | 1.21                 | <b>1.20×10<sup>-3</sup></b> | 1.17           | <b>0.047</b>                | 1.09                 | 0.456        | 1.09           | 0.385   | 1.77                                 | <b>2.65×10<sup>-8</sup></b>  |
| A4S                              | In A4.  | 0.93                   | 0.342                        | 0.89           | 0.626   | 0.87                 | <b>0.015</b>                | 0.95           | 0.886                       | 1.02                 | 0.922        | 0.99           | 0.854   | 0.74                                 | <b>2.08×10<sup>-7</sup></b>  |
| α2,3-sialylation per antenna (L) |   |                        |                              |                |         |                      |                             |                |                             |                      |              |                |         |                                      |                              |
| A4F0GL                           | Per galactose in non-fucosylated A4.                          | 0.83                   | <b>2.23×10<sup>-3</sup></b>  | 0.85           | 0.368   | 0.89                 | 0.231                       | 0.88           | <b>0.089</b>                | 0.98                 | 0.921        | 0.91           | 0.337   | 0.68                                 | <b>2.06×10<sup>-10</sup></b> |
| A4L                              | In A4.  | 0.82                   | <b>0.013</b>                 | 0.83           | 0.353   | 0.88                 | 0.217                       | 0.89           | 0.146                       | 1.00                 | 1.00         | 0.91           | 0.337   | 0.64                                 | <b>3.50×10<sup>-13</sup></b> |
| A3L                              | In A3.  | 0.87                   | <b>0.034</b>                 | 0.88           | 0.626   | 0.86                 | <b>0.010</b>                | 0.87           | 0.146                       | 0.99                 | 0.953        | 0.90           | 0.337   | 0.61                                 | <b>5.73×10<sup>-14</sup></b> |
| A2F0GL                           | Per galactose in non-fucosylated A2.                          | 0.94                   | 0.551                        | 0.96           | 0.752   | 0.86                 | <b>8.44×10<sup>-3</sup></b> | 0.94           | <b>6.48×10<sup>-1</sup></b> | 1.04                 | 0.691        | 0.96           | 0.553   | 0.81                                 | <b>1.18×10<sup>-4</sup></b>  |
| A4FGL                            | Per galactose in fucosylated A4.                              | 0.89                   | 0.370                        | 0.89           | 0.626   | 0.87                 | <b>0.015</b>                | 0.98           | 0.962                       | 1.02                 | 0.921        | 0.93           | 0.385   | 0.67                                 | <b>2.11×10<sup>-3</sup></b>  |

Continued

Table 2 Continued

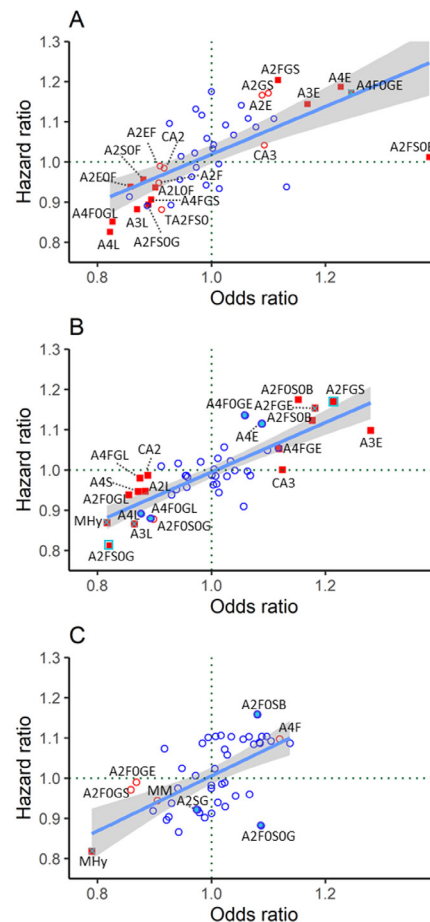
| Derived traits                   | Description†                         | Cardiovascular disease |                             |                |         | Nephropathy          |                             |                |              | Retinopathy          |         |                |         | Type 2 diabetes vs healthy controls* |                              |
|----------------------------------|--------------------------------------|------------------------|-----------------------------|----------------|---------|----------------------|-----------------------------|----------------|--------------|----------------------|---------|----------------|---------|--------------------------------------|------------------------------|
|                                  |                                      | Prevalent (logistic)   |                             | Incident (cox) |         | Prevalent (logistic) |                             | Incident (cox) |              | Prevalent (logistic) |         | Incident (cox) |         | OR                                   | p value                      |
|                                  |                                      | OR                     | p value                     | HR             | p value | OR                   | p value                     | HR             | p value      | OR                   | p value | HR             | p value |                                      |                              |
| A2L                              | In A2.                               | 1.00                   | 0.974                       | 1.03           | 0.808   | 0.88                 | 0.039                       | 0.95           | 0.680        | 1.07                 | 0.479   | 0.96           | 0.594   | 0.89                                 | 0.102                        |
| α2,6-sialylation per antenna (E) |                                      |                        |                             |                |         |                      |                             |                |              |                      |         |                |         |                                      |                              |
| A4FOGE                           | Per galactose in non-fucosylated A4. | 1.25                   | <b>4.88×10<sup>-6</sup></b> | 1.17           | 0.368   | 1.06                 | 0.797                       | 1.14           | <b>0.089</b> | 1.03                 | 0.811   | 1.10           | 0.337   | 1.31                                 | <b>3.73×10<sup>-6</sup></b>  |
| A4E                              | In A4.                               | 1.23                   | <b>8.65×10<sup>-4</sup></b> | 1.19           | 0.626   | 1.09                 | 0.527                       | 1.12           | 0.154        | 1.02                 | 0.922   | 1.11           | 0.337   | 1.42                                 | <b>8.76×10<sup>-9</sup></b>  |
| A3E                              | In A3                                | 1.17                   | <b>2.23×10<sup>-3</sup></b> | 1.14           | 0.626   | 1.28                 | <b>9.70×10<sup>-6</sup></b> | 1.10           | 0.394        | 0.92                 | 0.456   | 1.07           | 0.385   | 1.54                                 | <b>1.71×10<sup>-11</sup></b> |
| A2FGE                            | Per galactose in fucosylated A2.     | 1.05                   | 0.370                       | 1.14           | 0.718   | 1.18                 | <b>3.77×10<sup>-3</sup></b> | 1.15           | 0.059        | 1.08                 | 0.456   | 1.09           | 0.545   | 1.72                                 | <b>1.98×10<sup>-3</sup></b>  |
| A4FGE                            | Per galactose in fucosylated A4.     | 1.08                   | 0.682                       | 1.09           | 0.718   | 1.12                 | <b>0.046</b>                | 1.05           | 0.851        | 0.98                 | 0.953   | 1.09           | 0.337   | 1.52                                 | 0.094                        |

Selection of glycan traits is based on derived traits that were FDR-significant ( $p < 0.05$ ) at least in one of the complications (basic model: age, sex, age xsex interaction). Significant associations are marked bold.

\*The two utmost right columns show the results of meta-analyzed associations from a logistic regression analysis of the same glycan traits measured in patients with type 2 diabetes versus healthy controls from the DiaGene and Hoorn Diabetes Care System cohorts, as previously reported by Singh *et al.*<sup>21</sup>

†Glycan trait description: see abbreviation footnotes.

A2, diantennary, A3, triantennary; C, within complex; FDR, false discovery rate; T, within total.



**Figure 1** N-glycan-derived trait HR plotted versus OR for meta-analyzed data from DiaGene and Hoorn Diabetes Care System studies in the basic model (adjusted for age, sex, and age xsex interaction). (A) Cardiovascular disease, (B) nephropathy, and (C) retinopathy. Red-filled blue square: significant in prevalent and incident complications after FDR correction. Red-filled square with blue cross: significant in prevalent complications after FDR correction and in incident complications before FDR correction. Red-filled square: significant in prevalent complications after FDR correction. Blue-filled circle: significant in incident complications before FDR correction. Red unfilled circle: significant in prevalent complications before FDR correction. Blue unfilled circle: non-significant. Glycan derived trait abbreviations are described in table 2 and online supplemental table 3. FDR, false discovery rate.

α2,6-sialylated species, and decreased galactosylation of IgG-related glycans. Additionally, a decrease in fucosylated and in the ratio of high-mannose to hybrid glycans was observed only for CVD and nephropathy, respectively.

Some of these associations (higher α2,6-sialylation and bisection, lower α2,3-sialylation and fucosylation) showed overlaps with findings in diabetes mellitus versus controls (table 2), which may be a feature of type 2 diabetes or may have been the driving force of complications within diabetes.

### Cardiovascular disease

One of the strengths of our study is the ability to distinguish sialic acid linkage isomers. For both prevalent and

incident CVD we found a positive association of diantennary, triantennary, and tetra-antennary  $\alpha$ 2,6-sialylation (ie, A4F0GE, A4E, A3E, and A2E) and a negative association of triantennary and tetra-antennary  $\alpha$ 2,3-sialylation (ie, A4F0GL, A4L, and A3L). A similar pattern has also been reported for type 2 diabetes,<sup>9,21</sup> in contrary to other inflammatory conditions, such as inflammatory bowel disease or colorectal cancer, where both  $\alpha$ 2,6-sialylation and  $\alpha$ 2,3-sialylation increased.<sup>26,27</sup> Therefore, while higher  $\alpha$ 2,6-sialylation might be reflecting systemic inflammation which is inherent to all the aforementioned conditions,  $\alpha$ 2,3-sialylation may reflect disease-specific changes. More specifically, in diabetes, hyperglycemia leads to increased production of liver acute phase proteins, which carry both  $\alpha$ 2,6-linked and  $\alpha$ 2,3-linked sialic acids due to increased sialyltransferase activity.<sup>28,29</sup> Moreover, CVD is accompanied by an elevation of sialylated acute phase proteins such as fibrinogen and ceruloplasmin.<sup>30</sup> Plasma levels of alpha-2-Heremans-Schmid (HS)-glycoprotein were associated with obesity and type 2 diabetes,<sup>31,32</sup> and it appears to promote calcification in coronary artery disease.<sup>33</sup> In terms of the specific sialic acid linkage isomers, we can speculate on the role of beta-galactoside alpha-2,6-sialyltransferase-1 enzyme which is encoded by the ST6GAL1 gene, a type 2 diabetes genome-wide association study (GWAS)-confirmed risk gene.<sup>34</sup> Higher activity of this enzyme in CVD in the context of type 2 diabetes could potentially lead to a positive association with  $\alpha$ 2,6-sialylation. Overall, our findings of increasing  $\alpha$ 2,6-sialylation and decreasing  $\alpha$ 2,3-sialylation in prevalent and incident CVD patients with type 2 diabetes point to a possible role of these signatures in the etiology of CVD.

Also, we found a decrease in fucosylated, non-sialylated diantennary (A2S0F) and galactosylation of fucosylated, non-sialylated diantennary (A2FS0G) structures, and a strong increase in bisected fucosylated non-sialylated diantennary (A2FS0B) structures associated with both prevalent and incident CVD. These traits are mostly derived from IgG.<sup>29</sup> The absence of fucose enhances the antibody-dependent cytotoxicity of IgG in vitro.<sup>4,35</sup> To a lesser extent, higher levels of bisecting *N*-acetylglucosamine on IgG are often associated with a greater affinity for Fc $\gamma$ -receptors, and consequently with enhanced antibody-dependent cell-mediated cytotoxicity.<sup>36</sup> Similar to our data, previous work in the DiaGene cohort demonstrated that bisected glycans on IgG were increased in type 2 diabetes,<sup>37</sup> which shows partially opposing direction for addition of bisection and fucosylation. Decreased IgG galactosylation (A2FS0G) in our study agrees with previous reports in inflammatory diseases.<sup>4</sup> Taken together, our findings on IgG-related glycosylation changes and overall  $\alpha$ 2,6-sialylation increase seem to reflect inflammation.

### Nephropathy

We observed an increase in relative abundance of triantennary glycans within complex-type glycans (CA3) and a decrease in the relative abundance of diantennary

glycans (CA2) in prevalent nephropathy, while the MHY was decreased in both incident and prevalent nephropathy in the basic model. Similar findings have previously been reported in a glycomics study on hyperglycemia and kidney function in type 1 diabetes.<sup>38</sup> The positive association of CA3 might be due to an increased production of uridine diphosphate *N*-acetylglucosamine in hyperglycemia, which in turn increases the production of complex *N*-glycans. Increased *N*-glycan branching, corresponding to higher CA3, has also been shown to regulate the epidermal growth factor receptor and transforming growth factor- $\beta$  pathways that are implicated in diabetic kidney disease.<sup>39,40</sup> However, in our full model the associations of CA2 and CA3 were no longer significant.

High-mannose-type glycans are for a large part derived from apolipoprotein B100 and IgM.<sup>29</sup> Increased apolipoprotein B100 was previously found to be independently associated with progression of chronic kidney disease in patients with diabetes.<sup>41</sup> However, patients in our study were on lipid-lowering therapy. Since patients with or at risk of nephropathy are at high risk of macrovascular complications, more stringent lipid-lowering therapy measures in these patients might very well contribute to the inverse association of the MHY trait with nephropathy in our study. Of note, after correcting for non-HDL-c, the association remained significant.

We also found positive and negative associations in diantennary and tetra-antennary sialylated structures, respectively. Barrios *et al*<sup>42</sup> showed that the major sialylated (diantennary) glycan and the percentage of sialylated IgG without bisecting *N*-acetylglucosamine decreased in individuals with chronic kidney disease. Their analytical method, however, did not allow them to differentiate and quantify the types of sialic acid linkages. Our analytical technique revealed that several  $\alpha$ 2,3-sialylation (L) traits had a negative association, whereas  $\alpha$ 2,6-sialylated (E) glycans were positively associated with nephropathy in both prevalent and incident cases. Similar associations have been reported for type 2 diabetes glycome<sup>9</sup> and can be partly linked to inflammation, for example, A3E, or potentially disease-specific glycosylation changes, in case of  $\alpha$ 2,3-sialylation.<sup>10</sup>

Finally, bisected glycans without (A2F0S0B) and with (A2FS0B) fucosylation cross-sectionally showed a positive association with nephropathy in our study. The latter is similar to a finding in IgG glycosylation that showed increased bisection in patients with chronic kidney disease.<sup>42</sup>

In contrast, galactosylated, non-fucosylated, non-sialylated diantennary (A2F0S0G) and IgG-related galactosylated (A2FS0G) species showed a strong negative association with nephropathy both cross-sectionally and prospectively. A previous TPNG study by Adua *et al*<sup>43</sup> showed lower galactosylated fucosylated and higher galactosylated sialylated glycans in patients with type 2 diabetes and chronic kidney disease (CKD) than those without CKD. Our findings are moreover in line with a



study showing decreased IgG galactosylation to be associated with complement activation and renal damage.<sup>44</sup>

### Retinopathy

For retinopathy, the strongest association and the only FDR-corrected significant association at baseline and follow-up were with the ratio of high-mannose to hybrid glycans in model 1, with the same but non-significant trend visible in the full model. As discussed for nephropathy, this negative association of MHy might be due to a decrease of high-mannose rich apolipoprotein B100.

The strengths of our study are that it is the first to investigate the association of TPNG with multiple macrovascular and microvascular complications in type 2 diabetes, in two large independent cohorts with follow-up. We used an automated method with high-resolution mass spectrometry techniques. Moreover, sialic acid derivatization enabled us to quantify and distinguish sialic acid linkage-specific changes, which is a unique feature not investigated in other studies.

A few limitations are worth mentioning. The effect of medication use as per complication could not be investigated here due to statistical power limitations. Recently we demonstrated associations of TPNG and medication use,<sup>21</sup> which may play a role in the current findings. However, medication use is also strongly related to the presence or absence of diabetes complications, which makes it difficult to correct for medication use without correcting for the outcome. Also, the number of incident cases for each complication was limited in CVD and retinopathy, constraining the power of these analyses. Thus, we cannot exclude that potential associations remained undetected. Future studies with even larger sample sizes will enable more detailed studies on associations and interactions including medication use. Despite the ability to separate sialic acid linkage isomers, our technique does not distinguish between other isomeric structures, such as galactose linkage isomers.

To conclude, we found multiple associations of TPNG with CVD and nephropathy in type 2 diabetes at baseline and at follow-up. Those glycan traits belong to the main glycosylation features: complexity, fucosylation, bisection, galactosylation, and linkage-specific sialylation. These results can be used for future translational research and provide novel insights into type 2 diabetes complications. Moreover, this would help to gain additional understanding on the potential of TPNG patterns as biomarkers for type 2 diabetes complications.

### Author affiliations

<sup>1</sup>Center for Proteomics and Metabolomics, Leiden University Medical Center, Leiden, The Netherlands

<sup>2</sup>Genos Glycoscience Research Laboratory, Zagreb, Croatia

<sup>3</sup>Department of Cell and Chemical Biology, Leiden University Medical Center, Leiden, The Netherlands

<sup>4</sup>Department of Epidemiology and Biostatistics, Amsterdam University Medical Center, location VUmc, Amsterdam, The Netherlands

<sup>5</sup>Department of Biomedical Data Sciences, Section Molecular Epidemiology, Leiden University Medical Center, Leiden, The Netherlands

<sup>6</sup>Department of Internal Medicine, Erasmus Medical Center, University Medical Center, Rotterdam, The Netherlands

<sup>7</sup>Amsterdam UMC, Vrije Universiteit Amsterdam, Department of General Practice Medicine, Amsterdam Public Health Research Institute, Amsterdam, The Netherlands

<sup>8</sup>Amsterdam UMC, Vrije Universiteit Amsterdam, Department of Epidemiology and Data Science, Amsterdam Public Health Research Institute, Amsterdam, The Netherlands

<sup>9</sup>Department of Internal Medicine, Maxima Medical Center, Eindhoven, The Netherlands

**Acknowledgements** We wish to thank Dr Marco R Bladergroen and Jan Nouta for their support with the liquid-handling platform, and Dr Simone Nicolardi for his support of the mass spectrometry analyses (all persons' affiliation: Center for Proteomics and Metabolomics, Leiden University Medical Center, Leiden, the Netherlands). We also wish to thank the study participants and the research staff of the DiaGene Study Eindhoven and Hoorn DCS study.

**Contributors** EM performed glycomics analysis of the Hoorn DCS cohort, processed Hoorn DCS glycomics raw data, developed the R-scripts for data visualization, and wrote the manuscript. LM'tH contributed to the coordination of the Hoorn DCS study, performed statistical analyses, and reviewed/edited the manuscript. ES and RCS performed statistical analyses and reviewed/edited the manuscript. RFL collected clinical follow-up data and performed statistical analyses in the DiaGene study. AAvdH, FR, and GN contributed to the collection, design, and coordination of the Hoorn DCS study and reviewed/edited the manuscript. AGL contributed to the collection, design, and coordination of the DiaGene study and reviewed/edited the manuscript. EJGS contributed to the design and coordination of the DiaGene study and reviewed/edited the manuscript. MW supervised the glycomics study, contributed to discussion, and reviewed/edited the manuscript. MvH contributed to the conception of research question, collection, and coordination of the DiaGene study, reviewed/edited the manuscript, and contributed to the discussion; she is the guarantor of this work and as such had full access to all the data in the study and takes responsibility for the integrity of the data and the accuracy of the data analysis. VD supervised the glycomics study, processed the glycomics data, developed the R-script for data visualization, interpreted the results, reviewed/edited the manuscript, and contributed to the discussion. All authors have given approval to the final version of the manuscript.

**Funding** EM was supported by funding from the European Union's Horizon 2020 research and innovation program under the Marie Skłodowska-Curie grant for the project GlySign (contract no. 722095). MvH was supported by the ErasmusMC fellowship.

**Competing interests** MW is inventor on a patent application on sialic acid derivatization by ethyl esterification. EM is employed by Genos. VD currently works at BioTherapeutics Analytical Development, Janssen Biologics BV. No other potential conflicts of interest relevant to this article were reported.

**Patient consent for publication** Not required.

**Ethics approval** All participants gave their written informed consent, and the medical ethics committees of the Erasmus Medical Center (DiaGene MEC 2004-230) and the VU University Medical Center Amsterdam (Hoorn DCS MEC 2007-57) have approved the study protocols.

**Provenance and peer review** Not commissioned; externally peer reviewed.

**Data availability statement** Data are available upon reasonable request.

**Supplemental material** This content has been supplied by the author(s). It has not been vetted by BMJ Publishing Group Limited (BMJ) and may not have been peer-reviewed. Any opinions or recommendations discussed are solely those of the author(s) and are not endorsed by BMJ. BMJ disclaims all liability and responsibility arising from any reliance placed on the content. Where the content includes any translated material, BMJ does not warrant the accuracy and reliability of the translations (including but not limited to local regulations, clinical guidelines, terminology, drug names and drug dosages), and is not responsible for any error and/or omissions arising from translation and adaptation or otherwise.

**Open access** This is an open access article distributed in accordance with the Creative Commons Attribution 4.0 Unported (CC BY 4.0) license, which permits others to copy, redistribute, remix, transform and build upon this work for any purpose, provided the original work is properly cited, a link to the licence is given, and indication of whether changes were made. See: <https://creativecommons.org/licenses/by/4.0/>.

## ORCID iDs

Leen M 't Hart <http://orcid.org/0000-0003-4401-2938>  
 Roderick C Slieker <http://orcid.org/0000-0003-0961-9152>  
 Mandy van Hoek <http://orcid.org/0000-0002-2957-5436>  
 Viktoria Dotz <http://orcid.org/0000-0002-9888-7409>

## REFERENCES

- Unnikrishnan R, Pradeepa R, Joshi SR, *et al.* Type 2 diabetes: demystifying the global epidemic. *Diabetes* 2017;66:1432–42.
- Rawshani A, Rawshani A, Franzén S, *et al.* Risk factors, mortality, and cardiovascular outcomes in patients with type 2 diabetes. *N Engl J Med* 2018;379:633–44.
- Lauc G, Pezer M, Rudan I, *et al.* Mechanisms of disease: the human N-glycome. *Biochim Biophys Acta* 2016;1860:1574–82.
- Gudelj I, Lauc G, Pezer M. Immunoglobulin G glycosylation in aging and diseases. *Cell Immunol* 2018;333:65–79.
- Hennig R, Cajic S, Borowiak M, *et al.* Towards personalized diagnostics via longitudinal study of the human plasma N-glycome. *Biochim Biophys Acta* 2016;1860:1728–38.
- Gornik O, Wagner J, Pucic M, *et al.* Stability of N-glycan profiles in human plasma. *Glycobiology* 2009;19:1547–53.
- Knežević A, Gornik O, Polašek O, *et al.* Effects of aging, body mass index, plasma lipid profiles, and smoking on human plasma N-glycans. *Glycobiology* 2010;20:959–69.
- Adua E, Memarian E, Russell A, *et al.* Utilization of N-glycosylation profiles as risk stratification biomarkers for suboptimal health status and metabolic syndrome in a Ghanaian population. *Biomark Med* 2019;13:1273–87.
- Dotz V, Lemmers RFH, Reiding KR, *et al.* Plasma protein N-glycan signatures of type 2 diabetes. *Biochim Biophys Acta Gen Subj* 2018;1862:2613–22.
- Dotz V, Wuhler M. N-Glycome signatures in human plasma: associations with physiology and major diseases. *FEBS Lett* 2019;593:2966–76.
- JP L, Knežević A, Wang YX. Screening novel biomarkers for metabolic syndrome by profiling human plasma N-glycans in Chinese Han and Croatian populations. *J Proteome Res* 2011.
- Adua E, Memarian E, Russell A. High throughput profiling of whole plasma N-glycans in type II diabetes mellitus patients and healthy individuals: a perspective from a Ghanaian population. *Arch Biochem Biophys* 2019;661:10–21.
- Wittenbecher C, Štambuk T, Kuxhaus O, *et al.* Plasma N-Glycans as Emerging Biomarkers of Cardiometabolic Risk: A Prospective Investigation in the EPIC-Potsdam Cohort Study. *Diabetes Care* 2020;43:661–8.
- Testa R, Vanhooren V, Bonfigli AR, *et al.* N-glycomic changes in serum proteins in type 2 diabetes mellitus correlate with complications and with metabolic syndrome parameters. *PLoS One* 2015;10:e0119983.
- van Herpt TTW, Lemmers RFH, van Hoek M, *et al.* Introduction of the DiaGene study: clinical characteristics, pathophysiology and determinants of vascular complications of type 2 diabetes. *Diabetol Metab Syndr* 2017;9:1–10.
- van der Heijden AA, Rauh SP, Dekker JM, *et al.* The Hoorn diabetes care system (DCs) cohort. A prospective cohort of persons with type 2 diabetes treated in primary care in the Netherlands. *BMJ Open* 2017;7:e015599.
- Mellitus D. Diagnosis and classification of diabetes mellitus. *Diabetes Care* 2005;28:S5–10.
- Alberti KG, Zimmet PZ, Definition ZPZ. Definition, diagnosis and classification of diabetes mellitus and its complications. Part 1: diagnosis and classification of diabetes mellitus provisional report of a who consultation. *Diabet Med* 1998;15:539–53.
- Bladergroen MR, Reiding KR, Hipgrave Ederveen AL, *et al.* Automation of high-throughput mass spectrometry-based plasma N-glycome analysis with linkage-specific sialic acid esterification. *J Proteome Res* 2015;14:4080–6.
- Vreeker GCM, Nicolardi S, Bladergroen MR, *et al.* Automated plasma glycomics with linkage-specific sialic acid esterification and ultrahigh resolution MS. *Anal Chem* 2018;90:11955–61.
- Singh SS, Naber A, Dotz V, *et al.* Metformin and statin use associate with plasma protein N-glycosylation in people with type 2 diabetes. *BMJ Open Diabetes Res Care* 2020;8:e001230.
- Sv Buuren KG-O. Mice: multivariate imputation by chained equations in R. *J Stat Softw* 2010;1–68:1548–7660.
- Higgins JPT, Thompson SG, Deeks JJ, *et al.* Measuring inconsistency in meta-analyses. *BMJ* 2003;327:557–60.
- Schwarzer G. Meta: an R package for meta-analysis. *R news* 2007;7:40–5.
- Benjamini Y, Hochberg Y. Controlling the false discovery rate: a practical and powerful approach to multiple testing. *J R Stat Soc Series B* 1995;57:289–300.
- Clerc F, Novokmet M, Dotz V, *et al.* Plasma N-glycan signatures are associated with features of inflammatory bowel diseases. *Gastroenterology* 2018;155:829–43.
- de Vroome SW, Holst S, Gironde MR, *et al.* Serum N-glycome alterations in colorectal cancer associate with survival. *Oncotarget* 2018;9:30610–23.
- Crook M, Haq M, Haq S, *et al.* Plasma sialic acid and acute-phase proteins in patients with myocardial infarction. *Angiology* 1994;45:709–15.
- Clerc F, Reiding KR, Jansen BC, *et al.* Human plasma protein N-glycosylation. *Glycoconj J* 2016;33:309–43.
- Ahmed MS, Jadhav AB, Hassan A, *et al.* Acute phase reactants as novel predictors of cardiovascular disease. *ISRN Inflamm* 2012;2012:1–18.
- Ramírez-Vélez R, García-Hermoso A, Hackney AC, *et al.* Effects of exercise training on fetuin-A in obese, type 2 diabetes and cardiovascular disease in adults and elderly: a systematic review and meta-analysis. *Lipids Health Dis* 2019;18:23.
- Ix JH, Sharma K. Mechanisms linking obesity, chronic kidney disease, and fatty liver disease: the roles of fetuin-A, adiponectin, and AMPK. *J Am Soc Nephrol* 2010;21:406–12.
- Bourebaba L, Marycz K. Pathophysiological implication of fetuin-A glycoprotein in the development of metabolic disorders: a Concise review. *J Clin Med* 2033;2019:8.
- Kooner JS, Saleheen D, Sim X, *et al.* Genome-Wide association study in individuals of South Asian ancestry identifies six new type 2 diabetes susceptibility loci. *Nat Genet* 2011;43:984–9.
- Dekkers G, Treffers L, Plomp R, *et al.* Decoding the human immunoglobulin G-glycan repertoire reveals a spectrum of Fc-receptor- and complement-mediated-effector activities. *Front Immunol* 2017;8:877.
- Arnold JN, Wormald MR, Sim RB, *et al.* The impact of glycosylation on the biological function and structure of human immunoglobulins. *Annu Rev Immunol* 2007;25:21–50.
- Lemmers RFH, Vilaj M, Urda D, *et al.* Igg glycan patterns are associated with type 2 diabetes in independent European populations. *Biochim Biophys Acta Gen Subj* 2017;1861:2240–9.
- Birmingham ML, Colombo M, McGurnaghan SJ, *et al.* N-glycan profile and kidney disease in type 1 diabetes. *Diabetes Care* 2018;41:79–87.
- Lau KS, Partridge EA, Grigorian A, *et al.* Complex N-glycan number and degree of branching cooperate to regulate cell proliferation and differentiation. *Cell* 2007;129:123–34.
- Zhang M-Z, Wang Y, Pauksakon P, *et al.* Epidermal growth factor receptor inhibition slows progression of diabetic nephropathy in association with a decrease in endoplasmic reticulum stress and an increase in autophagy. *Diabetes* 2014;63:2063–72.
- Zhao W-B, Zhu L, Rahman T. Increased serum concentration of apolipoprotein B is associated with an increased risk of reaching renal replacement therapy in patients with diabetic kidney disease. *Ren Fail* 2020;42:323–8.
- Barrios C, Zierer J, Gudelj I, *et al.* Glycosylation profile of IgG in moderate kidney dysfunction. *J Am Soc Nephrol* 2016;27:933–41.
- Adua E, Anto EO, Roberts P, *et al.* The potential of N-glycosylation profiles as biomarkers for monitoring the progression of type II diabetes mellitus towards diabetic kidney disease. *J Diabetes Metab Disord* 2018;17:233–46.
- Cook HT. Complement and kidney disease. *Curr Opin Nephrol Hypertens* 2013;22:295–301.