



Universiteit
Leiden
The Netherlands

Hormonal contraceptive use and depressive symptoms: systematic review and network meta-analysis of randomised trials

Wit, A.E. de; Vries, Y.A. de; Boer, M.K. de; Scheper, C.; Fokkema, A.A.; Schoevers, R.A.; Giltay, E.J.

Citation

Wit, A. E. de, Vries, Y. A. de, Boer, M. K. de, Scheper, C., Fokkema, A. A., Schoevers, R. A., & Giltay, E. J. (2021). Hormonal contraceptive use and depressive symptoms: systematic review and network meta-analysis of randomised trials. *Bjpsych Open*, 7(4).
doi:10.1192/bjo.2021.64

Version: Publisher's Version

License: [Creative Commons CC BY 4.0 license](https://creativecommons.org/licenses/by/4.0/)

Downloaded from: <https://hdl.handle.net/1887/3276229>

Note: To cite this publication please use the final published version (if applicable).

Review

Hormonal contraceptive use and depressive symptoms: systematic review and network meta-analysis of randomised trials

Anouk E. de Wit, Ymkje Anna de Vries, Marrit K. de Boer, Celeste Scheper, Ante A. Fokkema, Robert A. Schoevers and Erik J. Giltay

Background

Observational studies suggest that hormonal contraceptive use may increase depressive symptoms in women, but it is unclear whether the effect is causal.

Aims

To quantitatively examine the evidence from randomised clinical trials for the link between hormonal contraceptive use and depressive symptoms.

Method

We performed a systematic review and network meta-analysis of randomised clinical trials comparing women randomised to any form of a hormonal contraceptive with women randomised to any other form of a (non-)hormonal contraceptive or placebo. We searched the Cochrane Central Register of Controlled Trials (CENTRAL), PubMed, Web of Science, PsycINFO, EMCare and EMBASE, from inception to 1 May 2020. Certainty of the evidence was assessed with the Grading of Recommendations Assessment, Development and Evaluation approach. A random-effect Bayesian network meta-analysis was conducted, with change in depressive symptoms between baseline and three cycles as outcome.

Results

This review identified 3492 records, of which 14 trials were eligible and 12 could be included in the network meta-analysis.

These trials included 5833 participants (mean age per study range: 16.8–32.4 years) and compared 10 different interventions. Compared with placebo, hormonal contraceptive use did not cause worsening of depressive symptoms (standardised mean difference: median, –0.04; range, –0.17 [95% credible interval –0.46 to 0.13] to 0.13 [95% credible interval –0.28 to 0.56]).

Conclusions

This study suggests that hormonal contraceptive use does not lead to an increase in depressive symptoms in adult women. Future studies should include first-time users, to confirm the results in young women.

Keywords

Randomised controlled trial; depressive disorders; epidemiology; neuroendocrinology; outcome studies.

Copyright and usage

© The Author(s), 2021. Published by Cambridge University Press on behalf of the Royal College of Psychiatrists. This is an Open Access article, distributed under the terms of the Creative Commons Attribution licence (<http://creativecommons.org/licenses/by/4.0/>), which permits unrestricted re-use, distribution, and reproduction in any medium, provided the original work is properly cited.

There has been considerable debate whether hormonal contraceptives influence affective states. Although cohort studies have suggested that hormonal contraceptive use could increase the risk of depressive symptoms or the prescription of psychotropic drugs,^{1–4} the use of observational data precludes statements about the causality of this relationship. A meta-analysis of experimental data could confirm or reject the causality of this observation, but no such meta-analysis has been performed to date.^{5,6}

Use of hormonal contraceptives and depressive symptoms

The execution of such an analysis is complicated by the availability of numerous hormonal contraceptives that each may have different effects.⁵ The best-known subgroup of hormonal contraceptives is the combined oral contraceptive pill (COC), which contains synthetic forms of oestrogen and progestin. Other examples of hormonal contraceptives are hormonal intrauterine devices and progestin-only implants (or pills of injections) that only contain a synthetic progestin. Some hormonal contraceptives have been suggested as possessing a higher risk of depressive symptoms compared with other contraceptives, including those containing higher doses of synthetic oestrogens^{2,7} and those containing progestins with androgenic features.^{8,9} Cyclic versus continuous regimens may also

increase the risk of developing depressive symptoms.¹⁰ Additionally, large observational studies have shown that teenage girls who used hormonal contraceptives in particular reported more depressive symptoms than those who did not use hormonal contraceptives,^{1,2,4} which might suggest that younger women are more vulnerable to the adverse effects of hormonal contraceptives independent of the specific formulation used. However, it may also point to the ‘healthy user effect’, which occurs when women who start hormonal contraceptive use as a teenager and experience side-effects are more likely to discontinue use.¹¹ If true, the stronger effect in younger women is explained by the higher proportion of first-time users, but not by younger age itself.

Aims of this systematic review and network meta-analysis

Given the substantial disease burden of depression, and the importance of hormonal contraceptives for the prevention of unwanted pregnancies and the treatment of dysmenorrhoea and acne, it is essential to examine whether hormonal contraceptives may cause depressive symptoms. A network meta-analysis of randomised clinical trials (RCTs) makes it possible to estimate the comparative harm of different hormonal contraceptives, using both direct and indirect evidence, and hence to summarise and interpret the

evidence for their putative effect on depressive symptoms.¹² Here, we conducted a systematic review and network meta-analysis on data from RCTs that assessed the effects of hormonal contraceptives, compared with any other (non-)hormonal contraceptive regimen, on depressive symptoms in women. Our primary aim was to examine whether any hormonal contraceptive compared with each other or placebo, COCs with higher versus those with lower doses of oestrogen, hormonal contraceptives with androgenic progestins versus those with anti-androgenic progestins or COCs with a cyclic regimen versus those with a continuous regimen, had a more negative effect on depressive symptoms. Our secondary aim was to investigate whether younger women are especially at risk for such potential side-effects.

Method

Search strategy and selection criteria

RCTs were eligible for inclusion if they included premenopausal women, compared hormonal contraceptive regimens with each other or with non-hormonal contraceptives (like placebo or copper intrauterine device) and evaluated depressive symptoms with a validated (self-report or observer-rated) scale. Hormonal contraceptives included COCs, combined injectable contraceptives, contraceptive patches, contraceptive rings, progestin-only pills, progestin-only injectables, progestin-only implants and levonorgestrel-releasing intrauterine devices. Studies performed in transwomen, women with an oophorectomy or women with hypogonadism were excluded. Studies that investigated hormonal contraceptives as a treatment for premenstrual dysphoric disorder or syndrome were also excluded because they target mood as a therapeutic goal and not as an unintended side-effect.

We conducted a search for English-language papers in the Cochrane Central Register of Controlled Trials, PubMed, Web of Science, PsycINFO, EMCare and EMBASE, from their inception to 1 May 2020. Reference lists of included trials were checked to identify other potentially eligible trials or ancillary publications. Roughly, we used multiple search terms to find ‘randomised clinical trials’ that studied any form of ‘hormonal contraceptive’ and included assessments that measured ‘depressive symptoms or depression’. See Supplementary Appendix 1 available at <https://doi.org/10.1192/bjo.2021.64> for the full electronic searches.

Two reviewers (C.S. and A.A.F.) independently scanned all retrieved citations by title, abstract and full text, according to the pre-specified inclusion criteria. Any discrepancies were resolved through discussion or recourse to a third reviewer (A.E.d.W.). Two reviewers (C.S. and A.A.F.) extracted data on summary estimates independently for each eligible trial, using a standardised pilot-tested data extraction form. The first data were extracted on 6 July 2020. This study is registered with the International Prospective Register of Systematic Reviews (PROSPERO; identifier CRD42020193304).

Data analysis

The reviewers (C.S. and A.A.F.) independently collected information on methodology (level of blinding, cross-over or parallel-group design), interventions (formulation, dose, frequency, regimen/route of administration), participants (participants per group, number who dropped out, age, first-time use of hormonal contraceptives, sexual activity, comorbidity) and outcomes (tools/scales, time points reported, phase of cycle reported). Outcomes included change in depressive symptoms or onset of a new depression between baseline and three cycles. The cycle represented the length of one completed treatment period as it was defined by the original research, and therefore the duration of the cycle may

slightly differ between trials. For example, some trials used a 24-day active and 4-day hormone-free interval, whereas others used a 21-day active and 7-day hormone-free interval. When data for three cycles were not available, other data as close to this point as possible were used (eligible range of 1–48 cycles). Preference was given to validated depressive symptom questionnaires, but when such questionnaires were not used in a trial, data from negative affect or depressive symptom subscales from scales measuring related concepts were accepted. When depressive symptoms or depression were measured with more than one standardised rating scale, the scale with the best psychometric properties (according to validity, reliability, responsiveness and interpretation) was chosen. However, in practice, we did not have to choose between scales because none of the trials reported useful data for more than one scale. If results were reported separately for different cycle phases, effect sizes were averaged across phases. Intention-to-treat data were used whenever possible. Reviewers resolved discrepancies by discussion and, when necessary, adjunction by a third party (A.E.d.W.). We contacted study authors and drug manufacturers to supplement incomplete reports of the original papers. The relative effect per comparison was summarised with the standardised mean difference (SMD), adjusted for small sample sizes (Hedges’ *g* correction), with a 95% credible interval.¹³

We performed a random-effects Bayesian network meta-analysis to explore all direct and indirect comparisons, using the ‘gemtc’ package in R version 4.0.3 for Mac OS X (R Foundation for Statistical Computing, Vienna, Austria; see <https://cran.r-project.org/bin/macosx/>). Trials that were not connected to the network were excluded from the network meta-analysis, and we only reported the direct effects for such comparisons. We accounted for the correlations induced by multi-arm studies by using multivariate distributions. We used uninformative, default priors for model parameters, and ran Markov chain Monte Carlo sampling. Simulations were run for four chains with an adaptive phase of 10 000 and a sampling phase of 500 000 iterations, thinned such that every tenth iteration was retained. The convergence of the models was checked by trace plots, density plots and the Brooks–Gelman–Rubin diagnostic. Each type of hormonal contraceptive (including regimen and dose) was treated as a separate node. A network plot was drawn, with thickness of the lines between nodes based on the number of direct comparisons investigated.

To facilitate interpretation of the findings, we calculated the median SMDs of all hormonal contraceptives and presented the range of SMDs of individual formulations. Then, we calculated the median SMD of the following groups: COCs with higher versus those with lower doses of oestrogen, hormonal contraceptives with androgenic progestins versus those with anti-androgenic progestins and COCs with a cyclic regimen versus those with a continuous regimen. Finally, we used a meta-regression analysis to examine whether studies that included on average younger women reported larger effect sizes, compared with placebo, than those that included older women. The mean age of participants in the studies (in years) was standardised. The beta coefficient and 95% credible interval of age, together with the change in deviance information criterion (DIC), was used to determine the effect of age on the relationship between hormonal contraceptive use and depressive symptoms.

The overall certainty of evidence was determined with the Confidence in Network Meta-analysis 1.9.1 (CINeMA, Evidence Synthesis Methods group, ISPM unibe.ch; see <https://cinema.ispm.unibe.ch>) online tool, based on the Grading of Recommendations Assessment, Development and Evaluation (GRADE) for network meta-analysis.^{14–16} Judgements on the certainty of evidence were made for each of the following domains: within-study bias, reporting bias, indirectness, imprecision, heterogeneity and incoherence. The

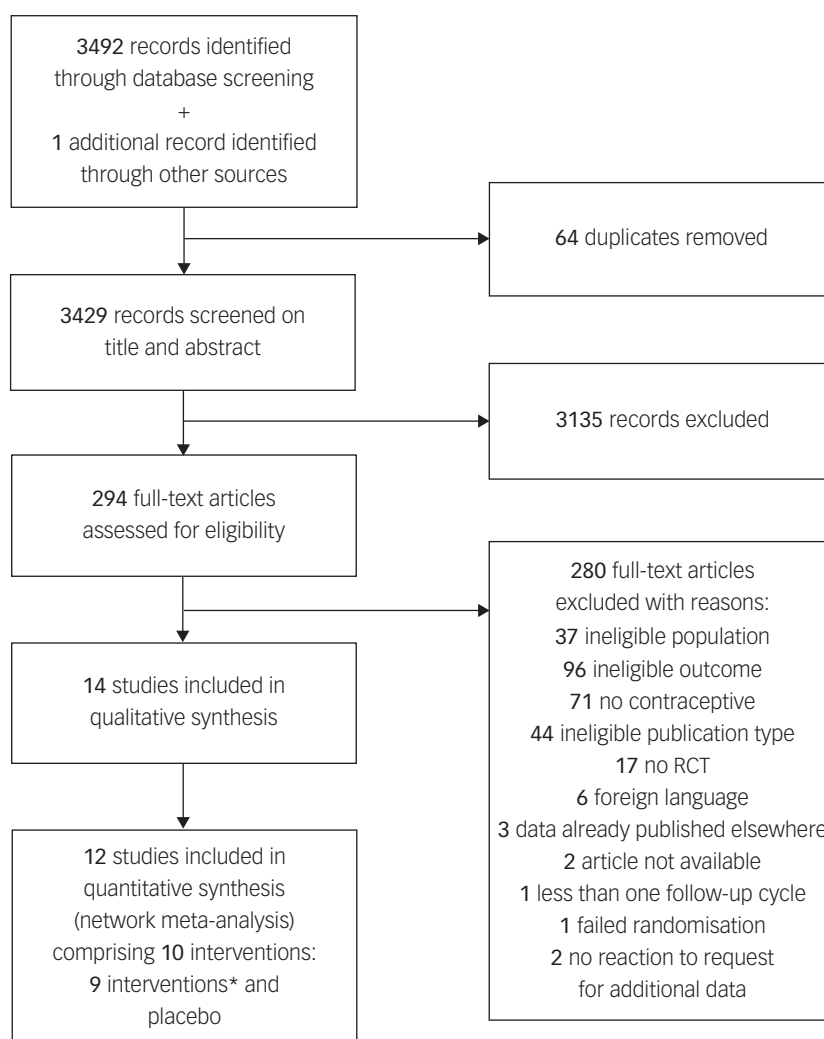


Fig. 1 Preferred Reporting Items for Systematic Reviews and Meta-Analyses flow diagram.

*Ethinylestradiol/drospirenone (30 µg/3 mg), ethinylestradiol/etonogestrel (15 µg/120 µg), oestradiol/dienogest (3;2;2.1 mg/0;2;3;0 mg), desogestrel (75 µg), ethinylestradiol/levonorgestrel (30 µg/150 µg), levonorgestrel (30 µg), oestradiol/nomegestrol acetate (1.5 mg/2.5 mg), ethinylestradiol/levonorgestrel (20 µg/100 µg) and ethinylestradiol/desogestrel (20 µg/150 µg). RCT, randomised clinical trial.

risk of within study biases for the outcome measure depressive symptoms was assessed with the modified Cochrane Risk of Bias tool 2.0.¹⁷ For full details on the GRADE assessment, see Supplementary Appendix 2.

Results

Our systematic search identified 3492 citations published between 1961 and 2020, of which 15 articles were considered eligible (Fig. 1).^{7–9,18–29} One additional trial was identified by hand-searching other articles.³⁰ The information available in five of these articles was not sufficient to complete the data collection,^{18–20,26,31} but authors from three trials provided us with the missing data.^{19,20,26} One study was excluded after data extraction, as the baseline depressive symptom scores differed by >5 s.d. between treatment groups, suggesting a failure of randomisation and rendering the results uninterpretable.²⁹ Out of the remaining 14 studies, two had no connection with the network,^{7,30} and are therefore only qualitatively described in this review.

Of the 12 trials included in the network meta-analysis, 11 had a parallel design and 1 had a cross-over design.^{8,9,18–27} A total of

ten different interventions were examined (nine active and one placebo). Six active interventions were COCs, two were progesterone-only pills and one was a vaginal ring. Two multi-arm trials compared three interventions, of which one additionally included two separate samples.^{19,20} The remaining were two-arm trials.^{8,9,18,21–27} A total of 5833 women were included, but across comparisons, the sample size per arm ranged from 14 to 2631 participants (Table 1). The weighted average duration of follow-up was 3.6 cycles (range 1–6), and the weighted mean drop-out rate was 16.6% (range 1.3–24.2%). Women had a weighted mean age of 27.3 years (range 16.8–32.4), and were, if studies provided such information, often sexually active (weighted mean rate 63.2%).^{19,20,22,23,25–27} Information on previous hormonal contraceptive use was provided in only five studies. Of these studies, two did not include first-time users at all,^{24,26} and the others included between 1.3 and 33.0% of first-time users.^{20,21,23} Most studies excluded women with a current depression or antidepressant use,^{20,23,24,26,27} or did not provide information on baseline depression presence.^{8,9,19,22,28} Only a few studies specifically included women with current depression^{21,25} or previous hormonal contraceptive-related negative affect,^{21,24} to make the sample as broadly representative as possible.

Table 1 Characteristics of the included randomised controlled trials

	Age, years Mean (s.d.)	Intervention		Comparison		First-time users, % ^b	Number who dropped out <i>n</i> (%)	Duration		Depression scale	
		Formulation	<i>n</i> ^a	Formulation	<i>n</i> ^a			Number of cycles	RCT type		Analysis
Battaglia et al ²⁷	26.5 (2.4)	Ethinylestradiol/drospirenone (30 µg/3 mg)	22	Ethinylestradiol/etonogestrel (15 µg/120 µg)	21	?	3 (7.0)	6	Parallel, single blinded	Complete cases	BDI
Davis et al ²⁶	30.5 (7.4)	Oestradiol/dienogest (3;2;2;1 mg/0;2;3;0 mg)	97	Ethinylestradiol/levonorgestrel (30 µg/150 µg)	103	0.0	13 (6.1)	4	Parallel, double blinded	Complete cases	PGWBI Depression
Elaut et al ¹⁹	23.1 (4.3)	Ethinylestradiol/etonogestrel (15 µg/120 mg), desogestrel (75 µg)	55 55	Ethinylestradiol/desogestrel (20 µg/150 µg)	55	?	40 (24.2)	3	Cross-over, unblinded	Intention to treat	SCL-90 Depression
Engman et al ²⁴	24.9 (4.2)	Ethinylestradiol/levonorgestrel (30 µg/150 µg)	14	Placebo	15	0.0	4 (11.4)	1	Parallel, double blinded	Complete cases	MADRS
Graham et al, sample a ²⁰	32.4 (3.7)	Ethinylestradiol/levonorgestrel (30 µg/150 µg), levonorgestrel (30 µg)	24 22	Placebo	25	1.3	4 (5.3)	3	Parallel, double blinded	Complete cases	BDI
Graham et al, sample b ²⁰	32.2 (4.2)	Ethinylestradiol/levonorgestrel (30 µg/150 µg), levonorgestrel (30 µg)	24 25	Placebo	25	33.0	1 (1.3)	3	Parallel, double blinded	Complete cases	BDI
Greco et al ⁷	19.8 (1.8)	Ethinylestradiol/norgestimate (35 µg/0.18;0.22;0.25 mg)	31	Ethinylestradiol/norgestimate (25 µg/0.18;0.22;0.25 mg)	29	?	12 (20.0)	3	Parallel, single blinded	Complete cases	BDI
Kelly et al ⁸	26.5 (6.1)	Ethinylestradiol/drospirenone (30 µg/3 mg)	193	Ethinylestradiol/levonorgestrel (30 µg/150 µg)	87	?	144 (34.0)	6	Parallel, single blinded	Complete cases	MDQ Negative
Legro et al ³⁰	27.2 (5.1)	Ethinylestradiol/norethindrone acetate (20 µg/1 mg continuous)	31	Ethinylestradiol/norethindrone acetate (20 µg/1 mg)	31	?	11 (17.7)	6	Parallel, double blinded	Intention to treat	MDQ Negative
Lundin et al ²¹	24.3 (4.2)	Oestradiol/nomegestrol acetate (1.5 mg/2.5 mg)	80	Placebo	88	17.8	24 (11.9)	3	Parallel, double blinded	Complete cases	MADRS
O'Connell et al ²⁸	16.8 (2.1)	Ethinylestradiol/levonorgestrel (20 µg/100 µg)	34	Placebo	34	?	8 (10.5)	3	Parallel, double blinded	Complete cases	CES-D
Sangthawan and Taneepanichskul ⁹	26.8 (4.5)	Ethinylestradiol/drospirenone (30 µg/3 mg)	50	Ethinylestradiol/levonorgestrel (30 µg/150 µg)	49	?	5 (4.8)	6	Parallel, unblinded	Complete cases	WHAQ Negative
Winkler et al ²³	28.3 (?)	Ethinylestradiol/desogestrel (20 µg/150 µg)	404	Ethinylestradiol/levonorgestrel (20 µg/100 µg)	384	7.6	239 (23.3)	6	Parallel, unblinded	Complete cases	PGWBI Depression
Witjes et al ²²	27.6 (7.0)	Oestradiol/nomegestrol acetate (1.5 mg/2.5 mg)	2631	Ethinylestradiol/drospirenone (30 µg/3 mg)	891	?	?	3	Parallel, unblinded	Intention-to-treat	MDQ
Zethraeus et al ²⁵	23.7 (3.6)	Ethinylestradiol/levonorgestrel (30 µg/150 µg)	162	Placebo	167	?	11 (3.2)	3	Parallel, double blinded	Complete cases	BDI

RCT, randomised clinical trial; BDI, Beck Depression Inventory; CES-D, Center for Epidemiologic Studies Depression Scale; MADRS, Montgomery-Åsberg Depression Rating Scale; MDQ neg, Menstrual Distress Questionnaire negative affect subscale; PGWBI dep, Psychological General Well-Being Index depression subscale; SCL-90 dep, Symptom Checklist 90 depression subscale; WHAQ neg, Women's Health Assessment Questionnaire negative affect subscale. Ethinylestradiol/dienogest (3;2;2;1 mg/0;2;3;0 mg) is a multiphasic combined oral contraceptive that has four different dosages of hormones throughout a 4-week cycle. The dosages before the 'slash' refer to the different dosages of ethinylestradiol, and the ones after the 'slash' refer to those of dienogest. The study by Graham et al included two different samples, of which sample a was from the Philippines and sample b was from Scotland.

a. Number of women who were available for the analysis (excluding those who dropped out) in case of complete-case analyses.

b. Percentage of the baseline sample that had no experience with hormonal contraceptive use before participating in the trial. As the majority of studies ran complete-case analyses, it is unknown what percentage of women included in the meta-analyses had previous hormonal contraceptive experience.

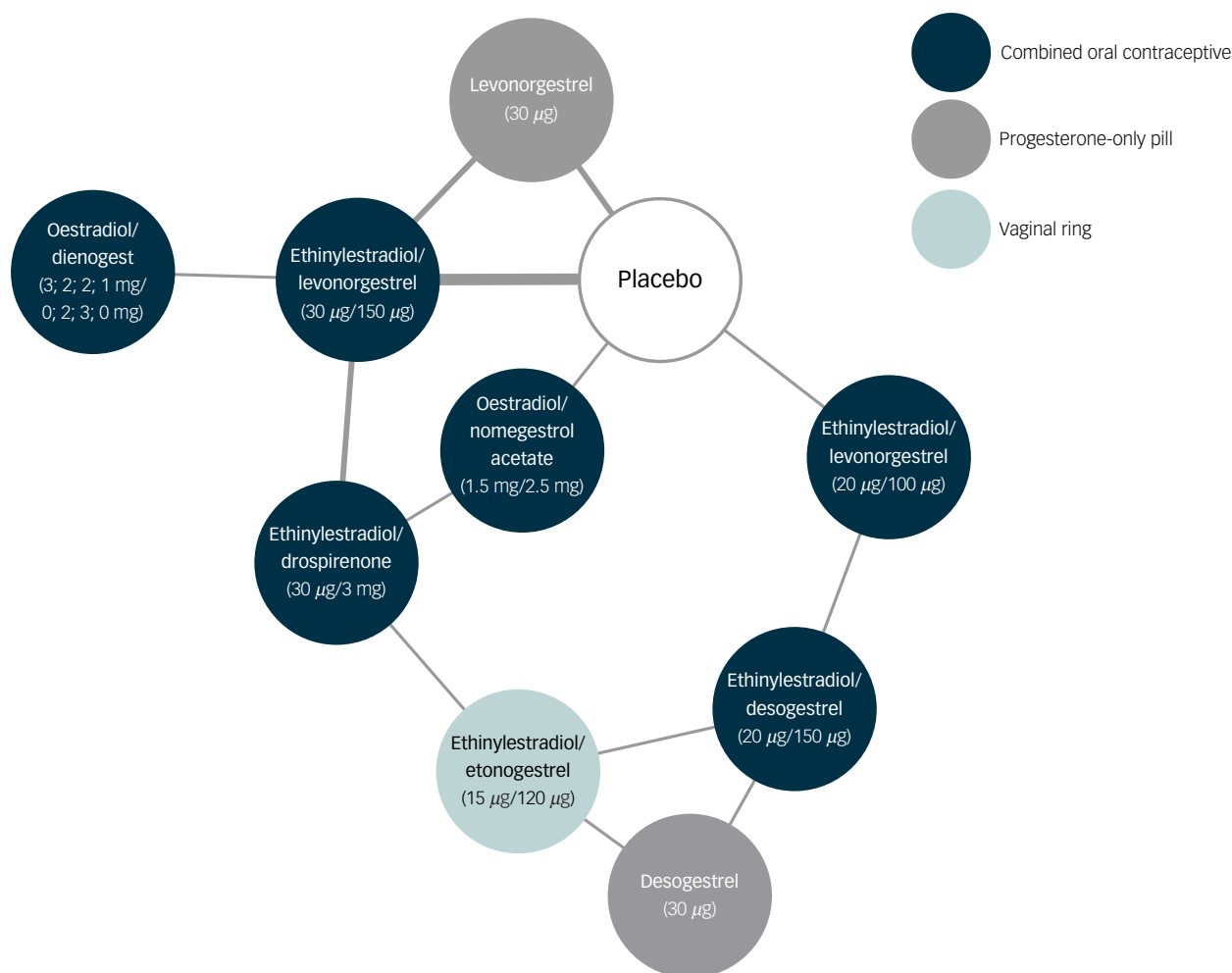


Fig. 2 Network of treatment comparisons for depressive symptoms, including forest plot with results.

Each node represents a different hormonal contraceptive or placebo. The thickness of lines between nodes is proportional to the number of studies investigating the direct comparison.

The network of treatment comparisons included ten individual nodes (Fig. 2). Placebo and ethinylestradiol/levonorgestrel (30 µg/150 µg) were the most well-connected interventions, with eight other interventions directly linked to each. The network meta-analysis showed that none of the hormonal contraceptives worsened depressive symptoms compared with placebo (median SMD -0.04 , range SMD -0.17 [95% credible interval -0.46 to 0.13] to 0.13 [95% credible interval -0.28 to 0.56]) (Fig. 3).

None of the specific formulations of hormonal contraceptives had a significantly more negative effect on depressive symptoms than any other specific formulation, suggesting that there was no group of hormonal contraceptives causing more depressive symptoms than another group. See Table 2 for all of the comparisons of effects of hormonal contraceptives on depressive symptoms. First, hormonal contraceptives with androgenic progestins (e.g. levonorgestrel and desogestrel) did not have a stronger association with depressive symptoms than those with anti-androgenic progestins (i.e. dienogest, nomegestrol acetate or drospirenone). For example, the median SMDs for COCs containing levonorgestrel or desogestrel compared with those containing anti-androgenic progestins were -0.09 and 0.11 , respectively (Fig. 4). Second, COCs with higher doses of oestrogen did not induce more depressive symptoms compared with those with lower doses (Fig. 5; median SMD of -0.16 for formulations with 30 µg compared

with 20 µg ethinylestradiol). This was also supported by a study that lacked a connection with the network.⁷ In that study, women who used a COC with a lower dose of oestrogen (ethinylestradiol/norgestimate, 25 µg/180 µg/215 µg/250 µg) had on average fewer depressive symptoms than women using the same contraceptive with a higher dose of oestrogen (35 µg/180 µg), but this was not statistically significant (mean difference in Beck Depression Inventory score between low- and high-oestrogen group, -2.26 ; $P = 0.09$). As the doses of oestradiol and ethinylestradiol are hard to compare and one of the two studies that studied oestradiol used a COC with a four-phasic regimen, which makes it even harder to estimate the average level of oestradiol to use, we limited our analyses to the direct and indirect effects of COCs including ethinylestradiol. Third, we aimed to compare continuous and intermittent regimens, but no such comparison was included in the network. However, another study that could not be included in the network showed that women who used ethinylestradiol/norgestimate (20 µg/1 mg) continuously did not have fewer depressive symptoms after 6 months of use than those who took it cyclically (mean difference in negative affect on Moos Menstrual Distress Premenstrual Questionnaire T -scores, -2.8 ; $P = 0.32$).³⁰

The meta-regression analyses showed that on average, every year decrease in mean age of the women investigated in a trial was associated with 0.028 lower SMD of the hormonal contraceptive

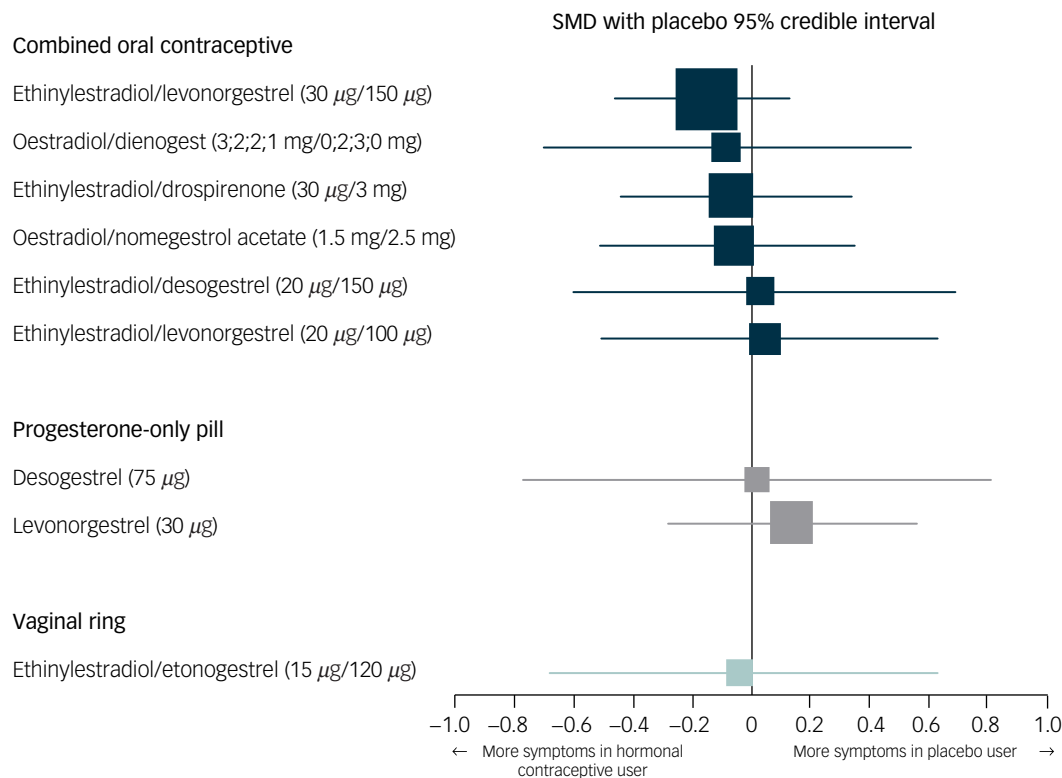


Fig. 3 Network forest plot of results compared with placebo.

The size of the SMD dots are proportional to the precision of the estimate (one per s.e.). Ethinylestradiol/dienogest (3;2;2;1 mg/0;2;3;0 mg) is a multiphasic combined oral contraceptive that has four different dosages of hormones throughout a 4-week cycle. The dosages before the 'slash' refer to the different dosages of ethinylestradiol, and the ones after the 'slash' refer to those of dienogest. SMD, standardised mean difference.

group compared with the placebo group (lower SMD indicating more depressive symptoms). However, this was not significant (standardised beta coefficient for age, 0.238; 95% credible interval -0.232 to 0.708; Δ DIC, -3.6). This association weakened after exclusion of the study that solely included women with previous hormonal contraceptive-related negative affect (beta coefficient for age, 0.193; 95% credible interval -0.254 to 0.642; Δ DIC, -4.0).²⁴

The certainty of evidence (GRADE) for all comparisons was judged to be 'very low' (Supplementary Appendix 2 and Table 1). Most of these judgements were caused by within-study bias (Supplementary Appendix 2.1), and by indirectness (Supplementary Appendix 2.3) and imprecision (Supplementary Appendix 2.4) of the effect sizes. The judgements made for each of the domains are described in detail in Supplementary Appendix 2.

Discussion

This systematic review examined 14 RCTs, of which 12 were included in a network meta-analysis to assess the effects of hormonal contraceptive use on depressive symptoms. Data from 5833 women were available, and 9 different hormonal contraceptives were compared with each other and placebo. The results suggest that, with a very low certainty of evidence, none of the investigated hormonal contraceptives caused more depressive symptoms, compared with placebo.

Here, we have provided quantitative evidence, based on RCTs, that hormonal contraceptives appear to have a limited effect on depressive symptoms. This finding is largely in line with the suggestions from previous qualitative reviews.^{5,6,33,34} In contrast to those reviews, however, we could not confirm the idea that the dose of

ethinylestradiol or the type of progestin influences the effect of hormonal contraceptives on depressive symptoms. Although the data regarding the safety of 20 µg *v.* 30 µg ethinylestradiol COCs suggested less risk with 20 µg formulas, this was not strong enough to endorse higher safety with 20 µg pills. We cannot rule out that much higher doses of ethinylestradiol (e.g. 50 µg) adversely affect the affective state, as none of the included trials studied such high doses, but these formulations are not recommended for contraception. Formulations containing androgenic progestins also did not cause more depressive symptoms than those with anti-androgenic formulations.

The suggestion that hormonal contraceptives have no effect on depressive symptoms stands in direct opposition to results from several observational studies showing that women who use hormonal contraceptives are at increased risk for depression or report more depressive symptoms.¹⁻⁴ Residual confounding in observational studies could be one compelling explanation for the contradiction in findings. Indeed, one observational study showed that the association between COC use and depressive symptoms could at least be partly explained by pre-existing differences between women who use oral contraceptives and those who do not, which included differences in number of women being sexually active, number of stressful experiences and number of women having acne or menstrual related pain.¹ However, the absence of a significant effect in the current meta-analysis may also have arisen because of limitations of the currently available randomised trials. As some observational studies showed that an increased prevalence of depressive symptoms related to hormonal contraceptives was most pronounced in teenage girls,¹⁻⁴ this may suggest that the absence of an effect in the, on average, adult women in our study could be a result of the healthy user effect.¹¹ We could not confirm that this bias has occurred in our analysis

Table 2 Comparisons for effects of hormonal contraceptives on depressive symptoms

Desogestrel (75 µg)	Oestradiol/dienogest (3;2;2;1 mg/0;2;3;0 mg)	Oestradiol/nomegestrol acetate (1.5 mg/2.5 mg)	Ethinylestradiol/ etonogestrel (15 µg/120 µg)	Ethinylestradiol/ desogestrel (20 µg/150 µg)	Ethinylestradiol/ levonorgestrel (20 µg/100 µg)	Ethinylestradiol/ drospirenone (30 µg/3 mg)	Ethinylestradiol/ levonorgestrel (30 µg/150 µg)	Levonorgestrel (30 µg)	Placebo
0.09 [†] (-0.88 to 1.07)	0.06 [†] (-0.75 to 0.94)	-0.04 [†] (-0.71 to 0.72)	-0.02 [†] (-0.76 to 0.66)	-0.08 [†] (-0.61 to 0.46)	-0.09 [†] (-0.71 to 0.55)	-0.01 [†] (-0.47 to 0.46)	0.10 [†] (-0.22 to 0.45)	0.13 [†] (-0.28 to 0.56)	
0.04 [†] (-0.54 to 0.62)	-0.05 [†] (-0.91 to 0.80)	-0.10 [†] (-0.85 to 0.60)	-0.11 [†] (-0.81 to 0.55)	-0.11 [†] (-0.81 to 0.55)	0.03 [†] (-0.59 to 0.64)	0.11 [†] (-0.56 to 0.76)	0.12 [†] (-0.52 to 0.74)	0.13 [†] (-0.28 to 0.56)	
-0.03 [†] (-0.61 to 0.55)	-0.13 [†] (-1.00 to 0.74)	-0.10 [†] (-0.85 to 0.60)	-0.09 [†] (-0.71 to 0.55)	-0.01 [†] (-0.47 to 0.46)	0.03 [†] (-0.59 to 0.64)	0.11 [†] (-0.56 to 0.76)	0.12 [†] (-0.52 to 0.74)	0.10 [†] (-0.22 to 0.45)	
-0.04 [†] (-0.74 to 0.66)	-0.14 [†] (-0.96 to 0.69)	-0.11 [†] (-0.81 to 0.55)	-0.09 [†] (-0.71 to 0.55)	-0.01 [†] (-0.47 to 0.46)	0.03 [†] (-0.59 to 0.64)	0.11 [†] (-0.56 to 0.76)	0.12 [†] (-0.52 to 0.74)	0.10 [†] (-0.22 to 0.45)	
0.07 [†] (-0.71 to 0.85)	-0.02 [†] (-0.68 to 0.62)	0.03 [†] (-0.44 to 0.37)	0.03 [†] (-0.59 to 0.64)	0.11 [†] (-0.56 to 0.76)	0.12 [†] (-0.52 to 0.74)	0.10 [†] (-0.22 to 0.45)	0.13 [†] (-0.28 to 0.56)	0.13 [†] (-0.28 to 0.56)	
0.18 [†] (-0.62 to 0.98)	0.08 [†] (-0.47 to 0.63)	0.12 [†] (-0.37 to 0.53)	0.13 [†] (-0.52 to 0.80)	0.21 [†] (-0.46 to 0.88)	0.22 [†] (-0.40 to 0.84)	0.10 [†] (-0.22 to 0.45)	0.13 [†] (-0.28 to 0.56)	0.13 [†] (-0.28 to 0.56)	
-0.12 [†] (-1.00 to 0.74)	-0.22 [†] (-0.91 to 0.46)	-0.18 [†] (-0.79 to 0.35)	-0.17 [†] (-0.92 to 0.58)	-0.09 [†] (-0.85 to 0.65)	-0.08 [†] (-0.79 to 0.61)	-0.19 [†] (-0.70 to 0.31)	-0.30 [†] (-0.71 to 0.10)	0.13 [†] (-0.28 to 0.56)	
0.01 [†] (-0.77 to 0.81)	-0.09 [†] (-0.70 to 0.54)	-0.05 [†] (-0.51 to 0.35)	-0.04 [†] (-0.68 to 0.63)	0.04 [†] (-0.60 to 0.69)	0.05 [†] (-0.52 to 0.63)	-0.07 [†] (-0.44 to 0.34)	-0.17 [†] (-0.46 to 0.13)	0.13 [†] (-0.28 to 0.56)	

Data are standardised mean differences (SMD) with 95% credible intervals in the column-defining intervention compared with the row-defining intervention. Higher SMD values correspond with fewer depressive symptoms in the column-defining hormonal contraceptive. None of the results were significant and all evidence was of low certainty (marked with †). Ethinylestradiol/dienogest (3;2;2;1 mg/0;2;3;0 mg) is a multiphasic combined oral contraceptive that has four different dosages of hormones throughout a 4-week cycle. The dosages before the 'slash' refer to the different dosages of ethinylestradiol, and the ones after the 'slash' refer to those of dienogest.

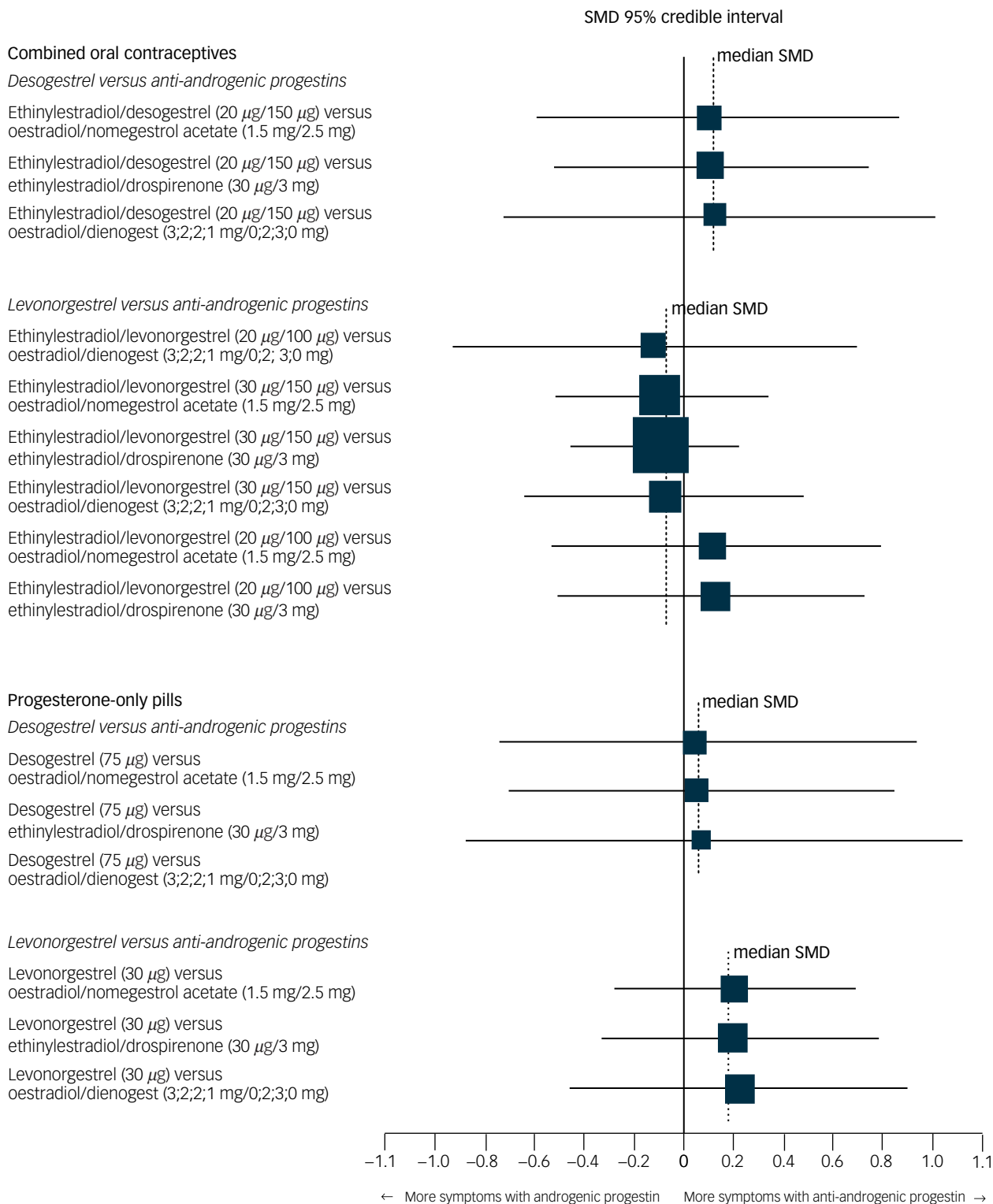


Fig. 4 Network forest plot of results of hormonal contraceptives with an androgenic progestin versus those with an anti-androgenic progestin.

Two androgenic progestins included in the network (levonorgestrel and desogestrel) were compared with the anti-androgenic progestins included in the network (dienogest, drospirenone, nomegestrol acetate). Synthetic progestins, especially the older ones, not only have affinity to the progesterone receptor, but can also have androgenic or oestrogenic actions. From the synthetic progestins here, levonorgestrel has the strongest affinity to the androgen receptor, followed by desogestrel.³² Newer progestins have higher progesterone potency and additional effects, such as anti-androgenic activity.³² The size of the SMD dots are proportional to the precision of the estimate (one per s.e.). Ethinylestradiol/dienogest (3;2;2;1 mg/0;2;3;0 mg) is a multiphasic combined oral contraceptive that has four different dosages of hormones throughout a 4-week cycle. The dosages before the 'slash' refer to the different dosages of ethinylestradiol, and the ones after the 'slash' refer to those of dienogest. SMD, standardised mean difference.

because effects of hormonal contraceptives on depressive symptoms were not stronger in studies that included on average younger women. However, age may be an imperfect proxy for first-time use, especially as there was only one trial that included teenage girls,

whereas the majority of trials included women in their mid-20s. Hence, we cannot rule out that first-time use is a risk factor for experiencing depressive symptoms with hormonal contraceptive use.

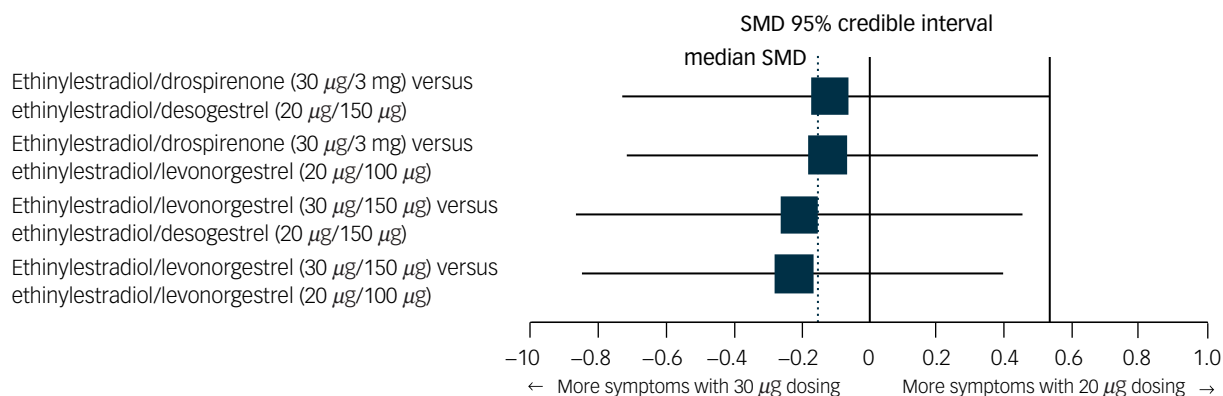


Fig. 5 Network forest plot of results of combined oral contraceptives with 30 µg ethinylestradiol versus those with 20 µg ethinylestradiol.

Two doses of ethinylestradiol were included in network: 20 mg and 30 mg). The size of the SMD dots are proportional to the precision of the estimate (one per s.e.). SMD, standardised mean difference.

Therefore, to provide a definite answer to the question of whether hormonal contraceptives adversely affect depressive symptoms, more studies are needed that also include first-time users, to ensure that findings are not biased by a healthy user effect. Women who have had experienced side-effects of hormonal contraceptives during their first-time use are less likely to consent to participate in a randomised trial of hormonal contraceptives, making it unlikely that these side-effects are going to be observed. As the potential randomisation to a less reliable non-hormonal contraceptive, such as a condom, would likely be ethically unacceptable given the significantly higher failure rate of condoms compared with hormonal contraceptives,³⁵ such trials may be limited to head-to-head studies of hormonal contraceptives to yield those formulations with the smallest adverse effect on the affective state, if any. The availability of such data would not only improve the generalisability of the findings to this first-time user group, but also provide more precise estimates. This is essential as the reported effect size in this study was still of very low certainty of evidence, according to the GRADE criteria for network meta-analysis, mainly because of the limited number of trials per comparison and the limited sample sizes in the trials.

This study has some major strengths. The project is the first network meta-analysis on the effect of hormonal contraceptives on depressive symptoms, and extends previous work that qualitatively reviewed observational and experimental studies.^{5,6,33} Moreover, it is substantially more comprehensive than previous reviews, as it includes seven trials that were not incorporated previously^{19,21,23–27} and includes data from three trials that have not been published before.^{19,20,26} Nevertheless, this study has also some limitations. Only one or a few trials were available for each comparison, and many trials had a relatively small sample size, which is probably insufficient to detect small but clinically important effects on depressive symptoms for specific formulations. This limitation is reflected in our ratings of the certainty of evidence for each comparison. Also, the quality of our analysis is limited by inherent limitations of individual included trials. First, very few trials provided sufficient data on important moderators, making it difficult to assess whether the transitivity assumption for network meta-analysis held. Only a few studies included women that had previous negative experiences with hormonal contraceptive use, which may have created a sample that has been less vulnerable to depressive symptoms than the average population of women who use hormonal contraceptives. Second, only one trial used an observer-rated scale to assess depressive symptoms, whereas the other trials used self-reported questionnaires or a related concept

(negative affect). Although self-reported rating scales are efficient in terms of time and costs, and provide valuable insights into the subjective experience of severity of symptoms, only observer-rated structured diagnostic assessment procedures can assess valid diagnoses of major depression disorders.

With our network meta-analysis, we provide quantitative evidence, based on experimental data, that hormonal contraceptive use is relatively safe regarding the effect on depressive symptoms, especially in adult women. However, few trials were available for each formulation of hormonal contraceptives, and certainty of evidence for each comparison was rated as very low. Only a limited number of first-time users or women with previously negative experiences with hormonal contraceptive use were included, which limits the generalisability of our findings to these groups. This implies that awareness of the possible existence of mood problems among women who use hormonal contraceptives remains critical to their health and well-being. Depression severely affects the functioning of the individual and the people around them,³⁵ and it also reduces hormonal contraceptive use adherence.³⁶ However, by no means do we suggest to limit hormonal contraceptive use to counterbalance this potential, but not proven, risk for depressive symptoms. Access to safe and effective methods of birth control is a basic human right, and many women benefit from hormonal contraceptive use, as it improves dysmenorrhea and reproductive autonomy.¹ Moreover, hormonal contraceptive use is much safer than pregnancy and associated postpartum depression risks.³⁷ More RCTs investigating the safety of hormonal contraceptive use, that include depressive symptoms as one of their outcomes, are warranted to help women and their doctors make better-informed choices when deciding among possible methods of contraception.

Anouk E. de Wit , Department of Psychiatry, University of Groningen, University Medical Center Groningen, The Netherlands; **Ymkje Anna de Vries** , Department of Developmental Psychology, University of Groningen, The Netherlands; **Marrit K. de Boer**, Department of Psychiatry, University of Groningen, University Medical Center Groningen, The Netherlands; **Celeste Scheper**, Department of Psychiatry, University of Groningen, University Medical Center Groningen, The Netherlands; **Ante A. Fokkema**, Department of Psychiatry, University of Groningen, University Medical Center Groningen, The Netherlands; **Robert A. Schoevers** , Department of Psychiatry, University of Groningen, University Medical Center Groningen, The Netherlands; **Erik J. Giltay**, Department of Psychiatry, University Medical Center Leiden, The Netherlands

Correspondence: Anouk E. de Wit. Email: a.e.de.wit@umcg.nl

First received 22 Jan 2021, final revision 24 Mar 2021, accepted 17 Apr 2021

Supplementary material

Supplementary material is available online at <https://doi.org/10.1192/bjo.2021.64>

Data availability

Upon publication of this article, the full data-set and script for analysing the data will be freely available from <https://osf.io/2ehyw/>.

Acknowledgements

We thank Jan W. Schoones, MA (information specialist from Leiden University Medical Centre), for assistance in developing the search strategy. We also are grateful for additional data provided to us by Cynthia A. Graham (Professor at the University of Southampton), Els Elaut (Professor at Gent University) and Bayer B.V.

Author contributions

R.A.S., A.E.d.W., Y.A.d.V., M.K.d.B. and E.J.G. conceived and designed the study. A.E.d.W. drafted the initial search strategy and executed the search. A.E.d.W., C.S. and A.A.F. screened the studies, extracted the data and performed the quality assessment. A.E.d.W., C.S., Y.A.d.V. and E.J.G. analysed the data. A.E.d.W. wrote the first draft of the manuscript. A.E.d.W., Y.A.d.V. and E.J.G. are the guarantors. All authors interpreted the data, and wrote and critically reviewed the manuscript and all revisions. The corresponding author attests that all listed authors meet authorship criteria and that no others meeting the criteria have been omitted. All authors confirm that they had full access to all of the data in the study and accept responsibility to submit for publication.

Funding

This research received no specific grant from any funding agency, commercial or not-for-profit sectors.

Declaration of interest

None.

References

- de Wit AE, Booij SH, Giltay EJ, Joffe H, Schoevers RA, Oldehinkel AJ. Association of use of oral contraceptives with depressive symptoms among adolescents and young women. *JAMA Psychiatry* 2020; **77**(1): 52–9.
- Skovlund CW, Mørch LS, Kessing LV, Lidegaard O. Association of hormonal contraception with depression. *JAMA Psychiatry* 2016; **73**(11): 1154–62.
- Anderl C, Li G, Chen FS. Oral contraceptive use in adolescence predicts lasting vulnerability to depression in adulthood. *J Child Psychol Psychiatry* 2020; **61**(2): 148–56.
- Zettermark S, Perez Vicente R, Merlo J. Hormonal contraception increases the risk of psychotropic drug use in adolescent girls but not in adults: a pharmacoepidemiological study on 800 000 Swedish women. *PLoS One* 2018; **13**(3): e0194773.
- Schaffir J, Worly BL, Gur TL. Combined hormonal contraception and its effects on mood: a critical review. *Eur J Contracept Reprod Health Care* 2016; **21**(5): 347–55.
- Worly BL, Gur TL, Schaffir J. The relationship between progestin hormonal contraception and depression: a systematic review. *Contraception* 2018; **97**(6): 478–89.
- Greco T, Graham CA, Bancroft J, Tanner A, Doll HA. The effects of oral contraceptives on androgen levels and their relevance to premenstrual mood and sexual interest: a comparison of two triphasic formulations containing norgestimate and either 35 or 25 microg of ethinyl estradiol. *Contraception* 2007; **76**(1): 8–17.
- Kelly S, Davies E, Feams S, McKinnon C, Carter R, Gerlinger C, et al. Effects of oral contraceptives containing ethinylestradiol with either drospirenone or levonorgestrel on various parameters associated with well-being in healthy women: a randomized, single-blind, parallel-group, multicentre study. *Clin Drug Investig* 2010; **30**(5): 325–36.
- Sangthawan M, Taneepanichskul S. A comparative study of monophasic oral contraceptives containing either drospirenone 3 mg or levonorgestrel 50 microg on premenstrual symptoms. *Contraception* 2005; **71**(1): 1–7.
- Coffee AL, Kuehl TJ, Willis S, Sulak PJ. Oral contraceptives and premenstrual symptoms: comparison of a 21/7 and extended regimen. *Am J Obstet Gynecol* 2006; **195**(5): 1311–9.
- Oinonen KA, Mazmanian D. Effects of oral contraceptives on daily self-ratings of positive and negative affect. *J Psychosom Res* 2001; **51**(5): 647–58.
- Higgins JP, Welton NJ. Network meta-analysis: a norm for comparative effectiveness? *Lancet* 2015; **386**(9994): 628–30.
- Morris SB, DeShon RP. Combining effect size estimates in meta-analysis with repeated measures and independent-groups designs. *Psychol Methods* 2002; **7**(1): 105–25.
- Brignardello-Petersen R, Bonner A, Alexander PE, Siemieniuk RA, Furukawa TA, Rochwerg B, et al. Advances in the GRADE approach to rate the certainty in estimates from a network meta-analysis. *J Clin Epidemiol* 2018; **93**: 36–44.
- Nikolakopoulou A, Higgins JPT, Papakonstantinou T, Chaimani A, Del Giovane C, Egger M, et al. CINeMA: an approach for assessing confidence in the results of a network meta-analysis. *PLoS Med* 2020; **17**(4): e1003082.
- Papakonstantinou T, Nikolakopoulou A, Higgins JPT, Egger M, Salanti G. CINeMA: software for semiautomated assessment of the confidence in the results of network meta-analysis. *Campbell Syst Rev* 2020; **16**(1): e1080.
- Sterne JAC, Savović J, Page MJ, Elbers RG, Blencowe NS, Boutron I, et al. RoB 2: a revised tool for assessing risk of bias in randomised trials. *BMJ* 2019; **366**: l4898.
- Guang-Sheng F, Mei-Lu B, Li-Nan C, Xiao-Ming C, Zi-Rong H, Zi-Yan H, et al. Efficacy and safety of the combined oral contraceptive ethinylestradiol/drospirenone (Yasmin) in healthy Chinese women: a randomized, open-label, controlled, multicentre trial. *Clin Drug Investig* 2010; **30**(6): 387–96.
- Elaut E, Buysse A, De Sutter P, De Cuyper G, Gerris J, Deschepper E, et al. Relation of androgen receptor sensitivity and mood to sexual desire in hormonal contraception users. *Contraception* 2012; **85**(5): 470–9.
- Graham CA, Ramos R, Bancroft J, Maglaya C, Farley TM. The effects of steroidal contraceptives on the well-being and sexuality of women: a double-blind, placebo-controlled, two-centre study of combined and progestogen-only methods. *Contraception* 1995; **52**(6): 363–9.
- Lundin C, Danielsson KG, Bixo M, Moby L, Bengtsdotter H, Jawad I, et al. Combined oral contraceptive use is associated with both improvement and worsening of mood in the different phases of the treatment cycle—a double-blind, placebo-controlled randomized trial. *Psychoneuroendocrinology* 2017; **76**: 135–43.
- Witjes H, Creinin MD, Sundström-Poromaa I, Martin Nguyen A, Korver T. Comparative analysis of the effects of norgestimate/17 β -estradiol and drospirenone/ethinylestradiol on premenstrual and menstrual symptoms and dysmenorrhea. *Eur J Contracept Reprod Health Care* 2015; **20**(4): 296–307.
- Winkler UH, Ferguson H, Mulders JA. Cycle control, quality of life and acne with two low-dose oral contraceptives containing 20 microg ethinylestradiol. *Contraception* 2004; **69**(6): 469–76.
- Engman J, Sundström Poromaa I, Moby L, Wikström J, Fredrikson M, Gingnell M. Hormonal cycle and contraceptive effects on amygdala and salience resting-state networks in women with previous affective side effects on the pill. *Neuropsychopharmacology* 2018; **43**(3): 555–63.
- Zethraeus N, Dreber A, Ranelli E, Blomberg L, Labrie F, von Schoultz B, et al. A first-choice combined oral contraceptive influences general well-being in healthy women: a double-blind, randomized, placebo-controlled trial. *Fertil Steril* 2017; **107**(5): 1238–45.
- Davis SR, Bitzer J, Giraldo A, Palacios S, Parke S, Serrani M, et al. Change to either a nonandrogenic or androgenic progestin-containing oral contraceptive preparation is associated with improved sexual function in women with oral contraceptive-associated sexual dysfunction. *J Sex Med* 2013; **10**(12): 3069–79.
- Battaglia C, Morotti E, Persico N, Battaglia B, Busacchi P, Casadio P, et al. Clitoral vascularization and sexual behavior in young patients treated with drospirenone-ethinyl estradiol or contraceptive vaginal ring: a prospective, randomized, pilot study. *J Sex Med* 2014; **11**(2): 471–80.
- O'Connell K, Davis AR, Kerns J. Oral contraceptives: side effects and depression in adolescent girls. *Contraception* 2007; **75**(4): 299–304.
- Shahnazi M, Farshbaf Khalili A, Ranjbar Kochaksaraei F, Asghari Jafarabadi M, Gaza Banoi K, Nahae J, et al. A comparison of second and third generations combined oral contraceptive pills' effect on mood. *Iran Red Crescent Med J* 2014; **16**(8): e13628.
- Legro RS, Pauli JG, Kunselman AR, Meadows JW, Kesner JS, Zaino RJ, et al. Effects of continuous versus cyclical oral contraception: a randomized controlled trial. *J Clin Endocrinol Metab* 2008; **93**(2): 420–9.
- Elovainio M, Teperi J, Aalto AM, Grenman S, Kivela A, Kujansuu E, et al. Depressive symptoms as predictors of discontinuation of treatment of menorrhagia by levonorgestrel-releasing intrauterine system. *Int J Behav Med* 2007; **14**(2): 70–5.
- Rowlands S. Newer progestogens. *J Fam Plann Reprod Health Care* 2003; **29**(1): 13–6.
- Poromaa IS, Segeblad B. Adverse mood symptoms with oral contraceptives. *Acta Obstet Gynecol Scand* 2012; **91**(4): 420–7.
- Böttcher B, Radenbach K, Wildt L, Hinney B. Hormonal contraception and depression: a survey of the present state of knowledge. *Arch Gynecol Obstet* 2012; **286**(1): 231–6.

- 35 Wittchen HU, Jacobi F, Rehm J, Gustavsson A, Svensson M, Jönsson B, et al. The size and burden of mental disorders and other disorders of the brain in Europe 2010. *Eur Neuropsychopharmacol* 2011; **21**(9): 655–79.
- 36 Hall KS, Moreau C, Trussell J, Barber J. Role of young women's depression and stress symptoms in their weekly use and nonuse of contraceptive methods. *J Adolesc Health* 2013; **53**(2): 241–8.
- 37 Committee on Adolescence. Contraception for adolescents. *Pediatrics* 2014; **134**(4): e1244–56.

