



Universiteit  
Leiden  
The Netherlands

## **Evidence that non-syndromic familial tall stature has an oligogenic origin including ciliary genes**

Weiss, B.; Eberle, B.; Roeth, R.; Bruin, C. de; Lui, J.L.C.; Paramasivam, N.; ... ; Rappold, G.A.

### **Citation**

Weiss, B., Eberle, B., Roeth, R., Bruin, C. de, Lui, J. L. C., Paramasivam, N., ... Rappold, G. A. (2021). Evidence that non-syndromic familial tall stature has an oligogenic origin including ciliary genes. *Frontiers In Endocrinology*, 12. doi:10.3389/fendo.2021.660731

Version: Publisher's Version

License: [Creative Commons CC BY 4.0 license](#)

Downloaded from: <https://hdl.handle.net/1887/3214442>

**Note:** To cite this publication please use the final published version (if applicable).



# Evidence That Non-Syndromic Familial Tall Stature Has an Oligogenic Origin Including Ciliary Genes

Birgit Weiss<sup>1</sup>, Birgit Eberle<sup>1</sup>, Ralph Roeth<sup>1</sup>, Christiaan de Bruin<sup>2</sup>, Julian C. Lui<sup>3</sup>, Nagarajan Paramasivam<sup>4</sup>, Katrin Hinderhofer<sup>5</sup>, Hermine A. van Duyvenvoorde<sup>6</sup>, Jeffrey Baron<sup>3</sup>, Jan M. Wit<sup>2†</sup> and Gudrun A. Rappold<sup>1\*†</sup>

<sup>1</sup> Department of Human Molecular Genetics, Institute of Human Genetics, Ruprecht Karls University Heidelberg, Heidelberg, Germany, <sup>2</sup> Department of Pediatrics, Leiden University Medical Center, Leiden, Netherlands, <sup>3</sup> Section on Growth and Development, National Institute of Health, Bethesda, MD, United States, <sup>4</sup> Computational Oncology Group, Molecular Diagnostics Program at the National Center for Tumor Diseases (NCT) and German Cancer Research Center (DKFZ), Heidelberg, Germany, <sup>5</sup> Institute of Human Genetics, Ruprecht Karls University Heidelberg, Heidelberg, Germany, <sup>6</sup> Department of Clinical Genetics, Leiden University Medical Center, Leiden, Netherlands

## OPEN ACCESS

### Edited by:

Pierre De Meyts,  
Université Catholique de Louvain,  
Belgium

### Reviewed by:

Alejandro Estrada-Cuzcano,  
Université de Strasbourg, France  
John Pintar,  
The State University of New Jersey,  
United States

### \*Correspondence:

Gudrun A. Rappold  
gudrun.rappold@med.uni-  
heidelberg.de

†These authors share last authorship

### Specialty section:

This article was submitted to  
Molecular and Structural  
Endocrinology,  
a section of the journal  
Frontiers in Endocrinology

Received: 29 January 2021

Accepted: 04 May 2021

Published: 04 June 2021

### Citation:

Weiss B, Eberle B, Roeth R, de Bruin C, Lui JC, Paramasivam N, Hinderhofer K, van Duyvenvoorde HA, Baron J, Wit JM and Rappold GA (2021) Evidence That Non-Syndromic Familial Tall Stature Has an Oligogenic Origin Including Ciliary Genes. *Front. Endocrinol.* 12:660731. doi: 10.3389/fendo.2021.660731

Human growth is a complex trait. A considerable number of gene defects have been shown to cause short stature, but there are only few examples of genetic causes of non-syndromic tall stature. Besides rare variants with large effects and common risk alleles with small effect size, oligogenic effects may contribute to this phenotype. Exome sequencing was carried out in a tall male (height 3.5 SDS) and his parents. Filtered damaging variants with high CADD scores were validated by Sanger sequencing in the trio and three other affected and one unaffected family members. Network analysis was carried out to assess links between the candidate genes, and the transcriptome of murine growth plate was analyzed by microarray as well as RNA Seq. Heterozygous gene variants in *CEP104*, *CROCC*, *NEK1*, *TOM1L2*, and *TSTD2* predicted as damaging were found to be shared between the four tall family members. Three of the five genes (*CEP104*, *CROCC*, and *NEK1*) belong to the ciliary gene family. All genes are expressed in mouse growth plate. Pathway and network analyses indicated close functional connections. Together, these data expand the spectrum of genes with a role in linear growth and tall stature phenotypes.

**Keywords:** oligogenic inheritance, non-syndromic tall stature, growth, ciliary genes, growth plate, exome sequencing

## INTRODUCTION

Human height is a highly polygenic complex trait, largely determined by genetics. Most of our understanding of the genetic architecture of height has derived from children with abnormal growth patterns and single gene defects (rare variants of large effect) (1, 2). At the other end of the spectrum, polygenic risk, measured as the sum of thousands of common risk alleles with small effects also contributes to height (3). Oligogenic effects fall between these two extremes, which—so far—have not been well characterized. Evidence has accumulated over the last few years that clinical outcomes can be influenced or modulated by the concerted action of small numbers of rare gene variants, giving rise to oligogenic traits.

Normal growth requires signaling through many different pathways at the growth plate. Multiple hormones, growth factors, and cytokines as well as paracrine factors regulate growth plate function and thereby linear growth. We have studied the genetic profile of a family with a son with extremely tall stature, a very tall father and normal statured mother by exome sequencing and extended the analysis to other family members. Tall stature is defined as height of more than two standard deviations (SDs) above the mean for a defined population ([www.icped.org](http://www.icped.org)). In families with multiple affected individuals, genetic top hits can be compared between individuals sharing the same phenotype and those who are unaffected, thereby subtracting the common genetic background. If multiple gene variants are identified that may contribute to a specific phenotype, it can be of interest to determine how these genes interact in networks. Connected genes within a pathway can provide useful insights on the biology and function. Lastly, expression analysis in growth plates may provide further indications on functionality.

## METHOD

### Growth Analysis

Birth weight and length were expressed as standard deviation score (SDS) for Swedish references (4). Height and head circumference of the index case and his sister were expressed as SDS for the 1997 Dutch nationwide reference (5). Height SDS of the parents and their siblings was calculated based on the 1965 Dutch nationwide reference (6). Reported height in young adulthood of the paternal grandparents and the grandfather's sister was expressed as SDS taking into account secular trend ("adjusted height SDS") (7).

Sitting height, leg length, and sitting height/height ratio were expressed as SDS for age and sex based on the 1997 Dutch reference (8). Arm span and arm span/height ratio were expressed as SDS for Dutch children (9, 10). Weight-for-height and body mass index were expressed as SDS based on the 1980 nationwide growth study (11).

To analyze growth data in a multigenerational family is a challenge because of the downward course of height in anybody's lifetime (due to shrinking) and the phenomenon of secular trend in the mean height of a given population that has been prominent in most countries in the past century. Therefore, for a proper analysis of height in a multigenerational family, it is necessary to obtain information about the approximate age at which the height measurement was taken so that the height in young adulthood can be estimated, followed by a comparison with the reference data in the year that the person was 21 years of age. Fortunately, good longitudinal data on shrinking by age have been published, and for the Netherlands detailed information is available about mean (SD) height of the population over the last century (7). This enabled us to estimate height SDS adjusted for shrinking and secular trend.

### Ethical Approval

This study was part of the research protocol (P06.118) "Genetic diagnosis of very tall stature", Leiden University Medical Center.

Written informed consent was received from all participants prior to their inclusion in the study. The study was also part of the Research Program "Whole exome genetic analyses in rare hereditary diseases" of Heidelberg University. The study was conducted in accordance with the guidelines of the WMA Declaration of Helsinki and the Department of Health and Human Services Belmont Report.

### Exome Sequencing and Filtering

Agilent SureSelect Human All Exon V4 was used to capture the exons. Sequencing was done using the Illumina HiSeq 2000 system. Raw sequence data was mapped to the 1,000 genomes phase II reference genome (GRCh37 version hs37d5) using BWA 0.6.2, and duplicates were removed using PICARD. The three samples (parents and index case) showed an average coverage of 176×, and >99% of bases in the autosomal chromosomes of the target regions have  $\geq 10\times$  coverage and  $\geq 20$  QUAL score (**Supplementary Figure 1**) The SNVs and indels were called along with parent samples using Platypus (version 0.8.1.1). In-house pipelines were used to annotate the variants with dbSNP, 1,000 genomes, gnomAD and local control databases. ANNOVAR and gencode (version 19) were used for the functional annotation of the variants. For further analysis, SNVs and indels with a read depth of at least 10× and minimum QUAL score of 20 were considered. Non-synonymous (missense, stop gain, stop loss) and splice site affecting SNVs as well as all exonic indels were filtered further. The genotype predicted by Platypus was used to assign genotypes to the variants. The Minor allele frequency (MAF) from gnomAD (version 0.2.1) genes and exomes was used to define the variant's rareness in the population. Variants with MAF  $> 0.1\%$  were removed. Furthermore, a set of 1,198 exomes and 3,910 WGS samples from the in-house database was used as control to remove common variants and sequencing artefacts. Variants present in more than 1% of the control samples were removed.

The functional effect of the remaining variants was predicted using four *in silico* prediction tools: PolyPhen2, PROVEAN, SIFT and MutationTaster. Variants predicted with a CADD score above 20 and as damaging by at least two of the four *in silico* prediction tools were used for further analysis. A CADD score above 20 indicates the variant to be within the 1% most deleterious substitutions in the human genome.

### Sanger Sequencing of Variants

Twenty-eight variants were confirmed by Sanger sequencing. Polymerase chain reaction (PCR) with primers indicated in **Supplementary Table 1** was performed with HotStar Taq Polymerase and products analyzed on agarose gels and subsequently sequenced using an ABI machine (Genewiz).

### Network and Pathway Analysis by Ingenuity Software

QIAGEN IngenuityPathway Analysis (IPA; <https://digital.insights.qiagen.com/>) was applied to predict functional connections, and their interpretation was carried out in the context of protein networks that comprise protein-protein interactions and related biological functions, and canonical signaling pathways.

## Databases

TGP (<https://browser.1000genomes.org/>); GnomAD (<https://gnomad.broadinstitute.org/>); CADD score (<https://cadd.gs.washington.edu/>); dbSNP (<https://www.ncbi.nlm.nih.gov/>); GTEx database ([www.gtexportal.org/](http://www.gtexportal.org/)); PROVEAN/SIFT (<http://provean.jcvi.org/index.php>); Polyphen2 (<http://genetics.bwh.harvard.edu/pph2/>); Mutation Taster (<http://www.mutationtaster.org/>); GWAS ([www.ebi.ac.uk/](http://www.ebi.ac.uk/)); IPA Ingenuity Systems (<https://digitalinsights.qiagen.com/>).

## Expression Analysis in Growth Plates

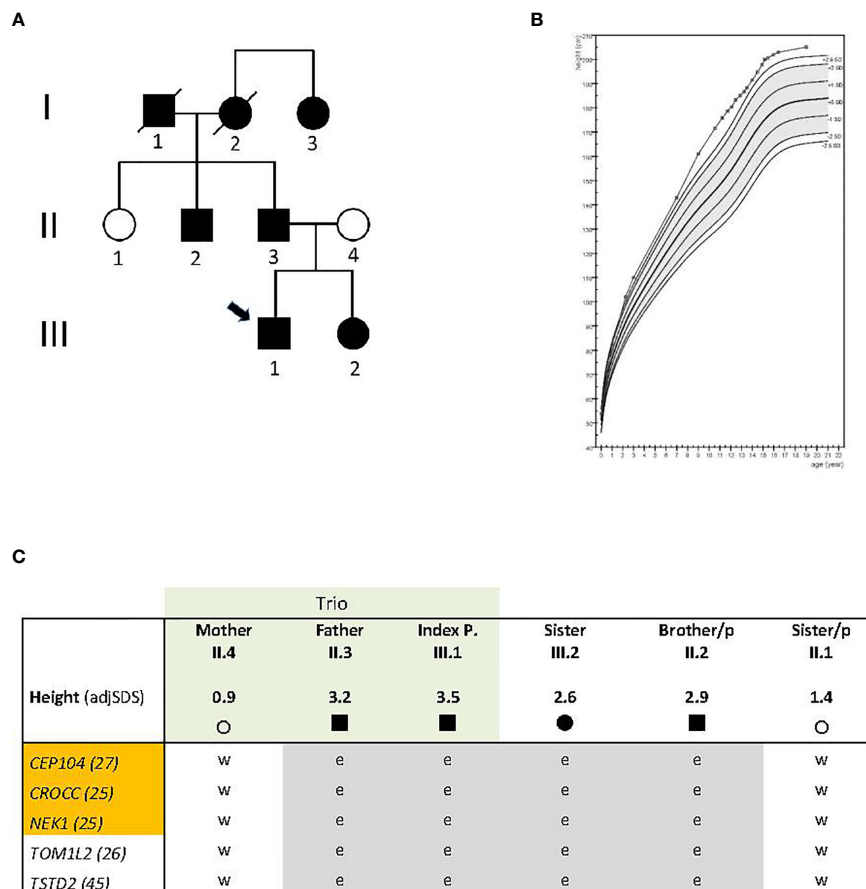
Gene expression analysis in mouse growth plate was carried out to analyze (1) *growth plate specificity*: comparing mRNA expression in growth plate of 1-week-old mice with expression in three different soft tissues (lung, kidney and heart) using microarray (12). (2) *spatial regulation*: comparing mRNA expression in proliferative and hypertrophic zones in the 1-week-old mouse growth plate by RNA-Seq (13); and (3) *temporal*

*regulation*: comparing mRNA expression at 1 and 4 weeks of age in proliferative and hypertrophic zones of mouse growth plate by RNA-Seq (13).

## RESULTS

### Clinical Data

The index case (**Figure 1A**, individual III.1) was born as the first child of healthy parents of Dutch origin. His father's (individual II.3) height at 18 years was 199.8 cm (3.2 SDS), and his mother's (individual II.4) height was 172 cm (0.9 SDS); his sister (III.2) who was two years younger than the proband reached an adult height of 187 cm (2.6 SDS). The father's brother's (II.2) height was 198 cm (2.9 SDS), and his sister's height (II.1) 176 cm (1.4 SDS). Reported height of the (deceased) paternal grandfather (I.1) in young adulthood was 193 cm (2.7 SDS adjusted for secular trend), of the (deceased) paternal grandmother (I.2)



**FIGURE 1 | (A)** Pedigree with non-syndromic familial tall stature. Arrow indicates index individual; circle, females, square, males; **(B)** Growth curve of the index case, plotted on the reference data from the Dutch 4<sup>th</sup> nation-wide growth study (8). Epiphysiodesis was performed at 15.1 years. Layout prepared using Growth analyser.org; **(C)** Gene variants shared between the four tall family members and not present in family members with normal height (in gray color). Exome sequenced trio is indicated in light green; orange color indicates ciliary genes. A nonsense variant was identified in *TSTD2*; the others are missense variants. CADD scores are given in numbers behind the gene symbol; adjSDS, stands for standard deviation score adjusted for secular trend in the population; /p, indicates paternal side; circle, female, square, male; e, heterozygous; w, wild type.

176 cm (2.2 SDS), and her 6 years younger sister (I.3) also 176 cm (2.1 SDS) (**Figure 1A**).

At the age of 10.5 years, the proband was referred to the pediatric endocrine clinic because of tall stature. Previous growth data included a birth weight of 3.8 kg (0.5 SDS) and length of 54 cm (1.8 SDS). During the first year, length increased to 2.0 SDS, weight-for-age remained close to 2.0 SDS, and head circumference decreased from 2.2 to 1.3 SDS. During childhood, his height gradually increased to 3.5 SDS. At age 10.5, his height was 172 cm (3.8 SDS), sitting height 89.5 cm (4.1 SDS), leg length 82.3 cm (4.3 SDS), sitting height/height ratio 0.5203 (0.2 SDS), arm span 169.5 cm (3.7 SDS), arm span/height ratio 0.7 SDS, head circumference 56 cm (1.5 SDS), and weight 60.0 kg (BMI 1.5 SDS). Shoe size was 43. He had no hyperlaxity or arachnodactyly, and established causes of tall stature (Klinefelter syndrome, pituitary gigantism, hyperthyroidism, and genetic aberrations of the CNP-NPR2 axis) were excluded by karyotype, serum (normal IGF-I, IGFBP-3, FSH, LH, testosterone, FT4 and TSH) and candidate gene analysis (*NPPB*, *NPPC*, *NPR2* and *NPR3*). A duplication of the *SHOX* gene region was excluded by MLPA (MRC Holland). At follow-up, full pubertal development (testes >16 ml) was reached at 14.4 years, and at 14.9 years, height was 197.8 cm (3.0 SDS) and predicted adult height 208.6 cm (3.5 SDS). Epiphysiodesis was performed at 15.1 years of age and at 16.7 years his adult height was 202.8 cm (3.0 SDS). His growth curve is shown in **Figure 1B**.

The boy's sister was born with a weight of 3.6 kg (0.4 SDS) and a length of 52 cm (1.2 SDS). During the first year, her length increased to 2.5 SDS, weight remained at 1.3 SDS and the head circumference was -0.5 SDS. During childhood, her height SDS was approximately 2.2 SDS. At 13.2 years of age, height was 177.2 cm (2.3 SDS), sitting height 88.4 cm (1.2 SDS), sitting height/height ratio -1.2 SDS, arm span 180.8 cm (2.7 SDS), arm span/height ratio 1.1 SDS, weight 64.0 kg (BMI 0.7 SDS), pubertal stages B5, P3, A3, blood pressure 118/61 mm Hg. Menarche occurred at 14.0 years. Adult height was 187 cm (2.6 SDS) (**Figure 1C**).

## Identification of Genetic Candidate Variants for Tall Stature

Exome sequencing was carried out in the index case (adjusted adult height 3.5 SDS), his father (height 3.2 SDS), and his mother (height 0.9 SDS) (**Figure 1A**, individuals III.1, II.3, II.4 respectively). After bioinformatics filtering, all rare, predicted damaging variants found to be shared between the affected father and his son but not present in the mother with normal height, with a CADD score above 20 and not rated as polymorphisms in gnomAD, were considered (**Supplementary Table 2A**). Twenty-eight selected rare gene variants were followed up and analyzed in three closely related family members by Sanger sequencing: two individuals with tall stature (II.2 and III.2) and one with normal height (II.1) (**Figure 1A**). (Data of deceased grand-parents, not shown). Four family members with tall stature shared identical heterozygous variants, which were not present in the family members with normal stature, in the following genes: Centrosomal Protein 104 (*CEP104*), Rootletin (*CROCC*), Serine/threonine-protein kinase (*NEK1*), Thiosulfate Sulfurtransferase-

like Domain containing 2 (*TSTD2*) and Target Of Myb1-Like 2 (*TOM1L2*), suggesting that these were potentially relevant for the phenotype (**Figure 1C**; **Table 1**). All identified missense variants were predicted to be damaging or probably damaging (**Supplementary Table 2**) and led to changes in highly evolutionary conserved amino acids (**Figure 2A**); in *TSTD2*, a nonsense mutation was identified. Three of the five genes (*CEP104*, *CROCC*, *NEK1*) are members of the ciliary gene family.

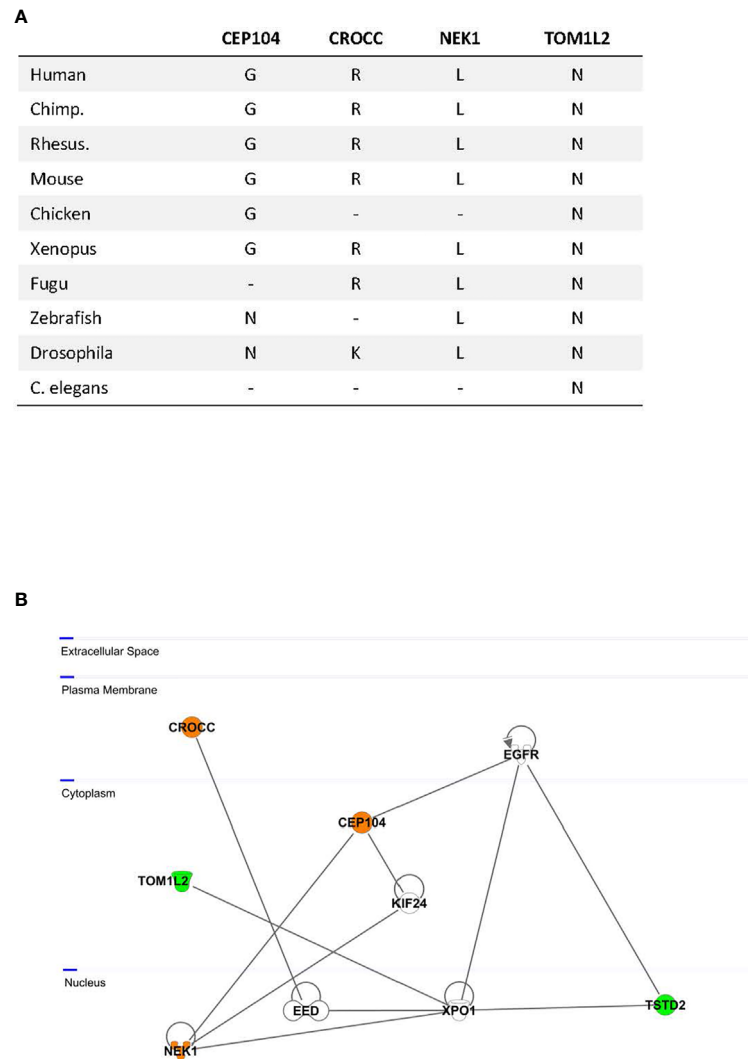
We then also had the opportunity to analyze another tall individual, the 94 years old aunt of the father (**Figure 1A**, individual I.3, height SDS 2.1) who showed the identical variants in *CEP104*, *CROCC*, and *TOM1L2*, indicating that the affected family members in subsequent generations inherited those variants from the proband's paternal grandmother (I.2), while the *NEK1* and *TSTD2* variants were likely transmitted from the maternal grandfather (I.1) or *de novo* (**Figure 1A**).

**TABLE 1** | Sanger sequencing results in five tall individuals and two individuals with normal height.

	Mother II.4	Father II.3	Index III.1	Sister III.2	Brother/ p II.2	Sister/ p II.1	Aunt/ p I.3
Height (adjSDS)	0.9	3.2	3.5	2.6	2.9	1.4	2.1
	○	■	■	●	■	○	●
<i>CEP104</i> (27)	w	e	e	e	e	w	e
<i>CROCC</i> (25)	w	e	e	e	e	w	e
<i>NEK1</i> (25)	w	e	e	e	e	w	w
<i>TOM1L2</i> (26)	w	e	e	e	e	w	e
<i>TSTD2</i> (45)	w	e	e	e	e	w	w
<i>AFAP1</i> (29)	w	e	e	w	w	w	w
<i>ANKMY2</i> (26)	w	e	e	e	e	e	w
<i>ARSA</i> (29)	w	e	e	e	w	e	w
<i>BBS1</i> (24)	w	e	e	e	w	e	w
<i>BMP2K</i> (27)	w	e	e	e	w	w	w
<i>CDC42SE1</i> (32)	w	e	e	e	w	e	w
<i>CHI3L2</i> (38)	w	e	e	e	w	e	w
<i>CHMP6</i> (23)	w	e	e	w	w	w	w
<i>FBXW4</i> (30)	w	e	e	w	w	w	w
<i>FREM1</i> (33)	w	e	e	e	w	e	w
<i>GPATCH2</i> (39)	w	e	e	w	w	w	w
<i>MTX3</i> (29)	w	e	e	w	w	w	w
<i>MYO1C</i> (34)	w	e	e	w	w	w	w
<i>MYO18B</i> (26)	w	e	e	e	w	w	w
<i>NCOA3</i> (35)	w	e	e	w	w	w	w
<i>NDST1</i> (26)	w	e	e	w	e	w	w
<i>NEDD4L</i> (27)	w	e	e	w	e	w	w
<i>RAB27A</i> (29)	w	e	e	w	w	w	w
<i>RIN1</i> (26)	w	e	e	e	w	e	w
<i>SLC13A4</i> (29)	w	e	e	w	w	w	w
<i>STAT6</i> (23)	w	e	e	w	w	w	w
<i>STX12</i> (28)	w	e	e	e	e	e	e
<i>TRPC4AP</i> (25)	w	e	e	w	w	w	w

Twenty-eight genes with high CADD scores above 20 and considered damaging in at least 2/4 in silico prediction tools were analyzed.

Missense variants were found in 24/28 genes: nonsense variants in *TSTD2* and *CHI3L2*; a frameshift in *NCOA3* and a splice site variant in *FREM1*. CADD scores are given in numbers behind the gene symbol; adjSDS, stands for standard deviation score adjusted for secular trend in the population; p, indicates paternal side; circle, female, square, male; grey color, gene variants shared between the four tall individuals of the index family; orange color, ciliary genes in the five shared candidate genes for tall stature.



**FIGURE 2 | (A)** Evolutionary conservation of the affected amino acids by missense mutations; –, no ortholog; a nonsense variant was identified in *TSTD2*; **(B)** Network Analysis by Ingenuity pathway analysis. Identified candidate gene products are highlighted in color; orange, proteins encoded by ciliary genes; green, proteins encoded by non-ciliary genes.

## Network Analysis

Network analysis of the five candidate genes for tall stature by the Ingenuity software revealed as “top diseases” *connective tissue and developmental disorders* ( $1.32 \times 10^{-3}$ – $2.20 \times 10^{-4}$ ). Top hit for molecular and cellular function was *cell morphology* ( $1.49 \times 10^{-5}$ – $1.49 \times 10^{-5}$ ). Using the Ingenuity pathway analysis, close network links between the highlighted genes could be revealed. Direct interaction between NEK1 and CEP104 was previously experimentally demonstrated (14, 15). Three of our candidate genes, NEK1, TSTD2, and TOM1L1, directly bind to Exportin 1 (XPO1), a cell cycle-regulated gene which mediates the nuclear transport of cellular proteins to the cytoplasm (16). XPO1 furthermore interacts *via* the Embryonic Ectoderm Development (EED) Polycomb protein with the other candidate gene, CROCC (17) (**Figure 2B**). Together, these data

highlight experimentally based close network connections between the five genes.

## Expression Analysis in Growth Plates

All candidate genes are expressed ubiquitously according to the genotype-tissue expression GTEx database ([www.gtexportal.org](http://www.gtexportal.org)). Stature is determined by the growth of long bones, which occurs at the growth plate, a cartilage structure with three principal layers, the resting, proliferative, and hypertrophic zones. To explore possible biological functions of the implicated genes in the growth plate, we assessed mRNA expression of the candidate genes in the growth plates of mice. For this purpose, we evaluated microarray data generated from growth plates of 1-week old mice and RNA-Seq data generated specifically from the proliferative and hypertrophic zones of 1- and 4-week old mouse proximal

tibial growth plates (**Supplementary Tables 3A, B**). We found that all five candidate genes are expressed in mouse growth plate. Three of the five genes (*Crocc*, *Nek1*, and *Tstd2*) showed expression differences between the proliferative and hypertrophic zones with downregulation of *Crocc* and *Nek1* and upregulation of *Tstd2* during hypertrophic differentiation. These differences between proliferative and hypertrophic zones were replicated in a different set of 1-week old mouse growth plate RNA-Seq data containing all three zones (including resting zone) generated independently (unpublished, data not shown). Finally, we looked for changes in gene expression in the mouse growth plate with age, as bone growth slows from 1 to 4 weeks of age, but found little temporal regulation of gene expression with only a decline in expression of *Crocc* in the proliferative zone from 1 to 4 weeks of age.

## DISCUSSION

Our genetic analysis in this family with non-syndromic extreme tall stature argues for an oligogenic origin. To define which of the predicted-deleterious variants might play the strongest role for the phenotype, strict quantitative criteria were applied. Twenty-eight variants were tested and five variants in *CEP104*, *CROCC*, *NEK1*, *TOM1L2*, and *TSTD2* were found to be shared in all tall individuals of the index family. We considered only wildtype variants in the two individuals with normal stature and only heterozygous variants shared between the four tall individuals. Thus, we cannot exclude that other variants from the top list also contribute to the phenotype. Using strict quantitative criteria, we, however, consider it very likely that we have analyzed those genes which play the strongest role for the phenotype. All identified affected amino acids in *CEP104*, *CROCC*, *NEK1*, *TOM1L2*, and *TSTD2* were highly conserved between species down to *Xenopus*, *Fugu* (in the case of *CROCC*, *NEK1*, and *TOM1L2*), *Drosophila* (in the case of *NEK1* and *TOM1L2*) and *C. elegans* (*TOM1L2*). Three of these five genes (*CEP104*, *CROCC*, and *NEK1*) are members of the ciliary gene family. Three genes, *CROCC*, *TOM1L2*, and *TSTD2* were found to be associated with height in GWAS studies ([www.ebi.ac.uk](http://www.ebi.ac.uk)) (3, 18). Pathway and network analyses furthermore showed close interactions, indicating functionally connected genes.

Longitudinal bone growth occurs at the growth plate by endochondral ossification, where cartilage is formed and then remodeled into bone tissue. This process involves chondrocyte proliferation and hypertrophy and extracellular matrix secretion, orchestrated by complex networks of local paracrine factors and modulated by endocrine factors. All five candidate genes were found to be expressed in mouse growth plate. Expression was also analyzed for temporal and spatial regulation in growth plate cartilage. *Crocc* and *Nek1* were found to be downregulated, and *Tstd2* was found to be upregulated during hypertrophic differentiation, suggesting a possible role of these genes in growth plate chondrocyte differentiation and therefore a possible mechanism to explain the tall stature.

Pathway analysis of the five candidate genes led to connective tissue and developmental disorders as top hits. *NEK1* is the only one

of the five genes which has been associated with a phenotype related to height, while *CROCC*, *TOM1L2*, and *TSTD2* were found to be associated with height in GWAS (3, 18). All five genes were shown to be very closely connected in the network analysis, providing evidence for the hypothesis that independent gene variants within connected genes of regulatory pathways can define a certain clinical phenotype (19). Interestingly, the two direct connectors to the candidate genes, *XPO1* and *EED*, themselves present plausible functions related to the phenotype, *XPO1* being a cell cycle-regulated gene and *EED*, mediating suppression of gene activity through histone deacetylation, and being causative for an overgrowth syndrome similar to Weaver syndrome (20, 21).

All five genes are highly promising candidate genes. *NEK1* is a serine/threonine-protein kinase, involved in cilium assembly as well as DNA damage checkpoint control and DNA damage repair with relatively high expression in the growth plate. Bi-allelic pathogenic variants, alone or in association with a *DYNC2H1* variant, have previously been associated with syndromic short stature as part of “short-rib thoracic dysplasia 6 with or without polydactyly” (SRTD6, MIM # 263520) (21, 22). Since a *NEK1* variant has been shown to be able to function in concert with other genes in causing a clinical syndrome, we speculate that a combination of the *NEK1* variant and one or more other variants may be the cause of the extreme tall stature in this family.

*TOM1L2* has a role in cell cycle progression, intracellular protein transport and regulates growth factor-induced mitogenic signaling. The affected amino acid in *TOM1L2* is conserved to worms supporting strong biological significance. Loss of function of the two other ciliary genes (*CEP104* and *CROCC*) or *TSTD2* has not been reported to be associated with a growth disorder, although *CROCC* has been detected at genome-wide significance for adult height. *CROCC* (Rooletin) is a structural component of the centrosomes, the main microtubule organizing centre as well as regulator of cell cycle progression. A biallelic defect of *CEP104* causes Joubert syndrome, but no clinical syndrome has been discovered caused by a *CROCC* or *TSD2* variant. However, an interesting observation is that *CROCC* interacts with *RUNX3* (23), while *RUNX3* plays an important role in cell cycle regulation and the epiphyseal growth plate. In a recent report, experimental data showed that *Runx3* silencing possibly promoted chondrocyte proliferation but suppressed differentiation, which would result in tall stature (24).

Primary cilia are present in almost every cell type including chondrocytes (25). It is remarkable that three of the identified five genes belong to the ciliary gene family. Ciliary genes have been previously connected with several Mendelian causes of multiple growth disorders, probably related to the importance of ciliary-dependent developmental signals, including Hedgehog, Wnt, platelet-derived growth factor, and bone morphogenetic protein (BMP) signaling in the regulation of bone development (26). Almost 20 ciliary genes are associated with skeletal dysplasias (27, 28), and biallelic variants in other ciliary genes (*ALMS1*, *IFT172*, and *KIAA0753*) have been discovered in individuals with growth hormone deficiency (29–31).

Several genes are known in which loss of function is associated with short stature and gain of function with tall

stature (2). The best-known example is *SHOX*, of which biallelic defects cause Langer syndrome with severe dwarfism, monoallelic defects Leri–Weill syndrome or non-syndromic short stature, and gene duplications non-syndromic tall stature (32, 33). A similar phenomenon was described for *NPR2* (34). In contrast, for several other genes (e.g., *FGFR3* and *NSD1*) a loss of function is associated with tall stature (CATSHL syndrome and Sotos syndrome, respectively), and gain of function with short stature (*FGFR3* and *CDKN1C*; Achondroplasia and Silver-Russell syndrome) (2). Another gene of which heterozygous loss of function is associated with tall stature and intellectual disability is DNA methyltransferase 3A (*DNMT3A*) (35), while gain of function of *DNMT3A* leads to dwarfism (36).

In summary, the identified genes in this study encode mechanistically distinct proteins, but their function converges on shared pathways and growth plate-related features. In future studies on genetic causes of stature or skeletal growth, specific attention to these five genes is warranted.

## DATA AVAILABILITY STATEMENT

The datasets presented in this study can be found in online repositories. The names of the repository/repositories and accession number(s) can be found in the article/**Supplementary Material**.

## ETHICS STATEMENT

The studies involving human participants were reviewed and approved by Leiden University Medical Center (P06.118) “Genetic diagnosis of very tall stature”. Written informed consent to participate in this study was provided by the

participants’ or their legal guardian/next of kin prior to their inclusion in the study. Written informed consent was obtained from the individual(s) and/or minor(s)’ legal guardian/next of kin for the publication of any potentially identifiable images or data included in this article.

## AUTHOR CONTRIBUTIONS

Conceptualization, JW and GR. Investigation, BW, BE, and JL. Software, NP. Patient resources, CB, HD, and JW. Methodology and supervision, JB and GR. Data analysis, BW, BE, JW, and GR. Writing and editing, JB, JW, and GR. All authors contributed to the article and approved the submitted version.

## FUNDING

This work was funded by the University of Heidelberg, Medical Faculty.

## ACKNOWLEDGMENTS

We thank the Genomics and Proteomics Core Facility (GPCF), DKFZ for the whole-exome sequencing, and the Omics IT and Data Management Core Facility (ODCF), DKFZ for managing the data. We also thank all the individuals for the participation in this study.

## SUPPLEMENTARY MATERIAL

The Supplementary Material for this article can be found online at: <https://www.frontiersin.org/articles/10.3389/fendo.2021.660731/full#supplementary-material>

## REFERENCES

- Durand C, Rappold GA. Height Matters-From Monogenic Disorders to Normal Variation. *Nat Rev Endocrinol* (2013) 9(3):171–7. doi: 10.1038/nrendo.2012.251
- Baron J, Savendahl L, De Luca F, Dauber A, Phillip M, Wit JM, et al. Short and Tall Stature: A New Paradigm Emerges. *Nat Rev Endocrinol* (2015) 11(12):735–46. doi: 10.1038/nrendo.2015.165
- Wood AR, Esko T, Yang J, Vedantam S, Pers TH, Wit JM, et al. Defining the Role of Common Variation in the Genomic and Biological Architecture of Adult Human Height. *Nat Genet* (2014) 46(11):1173–86. doi: 10.1038/ng.3097
- Niklasson A, Ericson A, Fryer JG, Karlberg J, Lawrence C, Karlberg P. An Update of the Swedish Reference Standards for Weight, Length and Head Circumference at Birth for Given Gestational Age (1977–1981). *Acta Paediatr Scand* (1991) 80(8–9):756–62. doi: 10.1111/j.1651-2227.1991.tb11945.x
- Fredriks AM, van Buuren S, Burgmeije RJ, Meulmeester JF, Beuker RJ, Brugman E, et al. Continuing Positive Secular Growth Change in The Netherlands 1955–1997. *Pediatr Res* (2000) 47(3):316–23. doi: 10.1203/00006450-200003000-00006
- van Wieringen JC, Verbrugge HP, de Haas JH. *Growth Diagrams 1965 Netherlands*. Nederlands Instituut voor Praeventieve Geneeskunde: Wolters-Noordhoff (1971).
- Niwenweg R, Smit ML, Walenkamp MJ, Wit JM. Adult Height Corrected for Shrinking and Secular Trend. *Ann Hum Biol* (2003) 30(5):563–9. doi: 10.1080/0301446032000112661
- Fredriks AM, van Buuren S, van Heel WJ, Dijkman-Neerincx RH, Verloove-Vanhorick SP, Wit JM. Nationwide Age References for Sitting Height, Leg Length, and Sitting Height/Height Ratio, and Their Diagnostic Value for Disproportionate Growth Disorders. *Arch Dis Child* (2005) 90(8):807–12. doi: 10.1136/adc.2004.050799
- Gerver WJM, de Bruin R. *Paediatric Morphometrics*. Maastricht, Netherlands: University Press Maastricht (2001).
- Gerver WJM, Gkourogianni A, Dauber A, Nilsson O, Wit JM. Arm Span and Its Relation to Height in a 2- to 17-Year-Old Reference Population and Heterozygous Carriers of *ACAN* Variants. *Horm Res Paediatr* (2020) 93(3):164–72. doi: 10.1159/000508500
- Cole TJ, Roede MJ. Centiles of Body Mass Index for Dutch Children Aged 0–20 Years in 1980—a Baseline to Assess Recent Trends in Obesity. *Ann Hum Biol* (1999) 26(4):303–8. doi: 10.1080/030144699282999
- Lui JC, Jee YH, Garrison P, Iben JR, Yue S, Ad M, et al. Differential Aging of Growth Plate Cartilage Underlies Differences in Bone Length and Thus Helps Determine Skeletal Proportions. *PLoS Biol* (2018) 16(7):e2005263. doi: 10.1371/journal.pbio.2005263
- Lui JC, Nilsson O, Chan Y, Palmer CD, Andrade AC, Hirschhorn JN and Baron J. Synthesizing Genome-Wide Association Studies and Expression Microarray Reveals Novel Genes That Act in the Human Growth Plate to Modulate Height. *Hum Mol Genet* (2012) 21(23):5193–201. doi: 10.1093/hmg/dds347
- Gupta GD, Coyaud E, Goncalves J, Mojarad BA, Liu Y, Wu Q, et al. Dynamic Protein Interaction Landscape of the Human Centrosome-Cilium Interface. *Cell* (2015) 163(6):1484–99. doi: 10.1016/j.cell.2015.10.065



15. Hein MY, Hubner NC, Poser I, Cox J, Nagaraj N, Toyoda Y, et al. A Human Interactome in Three Quantitative Dimensions Organized by Stoichiometries and Abundances. *Cell* (2015) 163(3):712–23. doi: 10.1016/j.cell.2015.09.053
16. Kirli K, Karaca S, Dehne HJ, Samwer M, Pan KT, Lenz C, et al. A Deep Proteomics Perspective on CRM1-mediated Nuclear Export and Nucleocytoplasmic Partitioning. *Elife* (2015) 4. doi: 10.7554/eLife.11466
17. Cao Q, Wang X, Zhao M, Yang R, Malik R, Qiao Y, et al. The Central Role of EED in the Orchestration of Polycomb Group Complexes. *Nat Commun* (2014) 5:3127. doi: 10.1038/ncomms4127
18. Kichaev G, Bhatia G, Loh PR, Gazal S, Burch K, Freund MK, et al. Leveraging Polygenic Functional Enrichment to Improve Gwas Power. *Am J Hum Genet* (2019) 104(1):65–75. doi: 10.1016/j.ajhg.2018.11.008
19. Huttlin EL, Bruckner RJ, Paulo JA, Cannon JR, Ting L, Baltier K, et al. Architecture of the Human Interactome Defines Protein Communities and Disease Networks. *Nature* (2017) 545(7655):505–9. doi: 10.1038/nature22366
20. Cohen AS, Tuysuz B, Shen Y, Bhalla SK, Jones SJ, Gibson WT. A Novel Mutation in EED Associated With Overgrowth. *J Hum Genet* (2015) 60(6):339–42. doi: 10.1038/jhg.2015.26
21. Thiel C, Kessler K, Giessel A, Dimmler A, Shalev SA, von der Haar S, et al. NEK1 Mutations Cause Short-Rib Polydactyly Syndrome Type Majewski. *Am J Hum Genet* (2011) 88(1):106–14. doi: 10.1016/j.ajhg.2010.12.004
22. El Hokayem J, Huber C, Couve A, Aziza J, Baujat G, Bouvier R, et al. NEK1 and DYNC2H1 are Both Involved in Short Rib Polydactyly Majewski Type But Not in Beemer Langer Cases. *J Med Genet* (2012) 49(4):227–33. doi: 10.1136/jmedgenet-2011-100717
23. Chuang LS, Lai SK, Murata-Hori M, Yamada A, Li HY, Gunaratne J, et al. RUNX3 Interactome Reveals Novel Centrosomal Targeting of RUNX Family of Transcription Factors. *Cell Cycle* (2012) 11(10):1938–47. doi: 10.4161/cc.20278
24. Zhou Z, Yao B, Zhao D. Runx3 Regulates Chondrocyte Phenotype by Controlling Multiple Genes Involved in Chondrocyte Proliferation and Differentiation. *Mol Biol Rep* (2020) 47(8):5773–92. doi: 10.1007/s11033-020-05646-6
25. McGlashan SR, Cluett EC, Jensen CG, Poole CA. Primary Cilia in Osteoarthritic Chondrocytes: From Chondrons to Clusters. *Dev Dyn* (2008) 237(8):2013–20. doi: 10.1002/dvdy.21501
26. Kaku M, Komatsu Y. Functional Diversity of Ciliary Proteins in Bone Development and Disease. *Curr Osteoporos Rep* (2017) 15(2):96–102. doi: 10.1007/s11914-017-0351-6
27. Hauer NN, Popp B, Taher L, Vogl C, Dhandapany PS, Buttner C, et al. Evolutionary Conserved Networks of Human Height Identify Multiple Mendelian Causes of Short Stature. *Eur J Hum Genet* (2019) 27(7):1061–71. doi: 10.1038/s41431-019-0362-0
28. Huber C, Cormier-Daire V. Ciliary Disorder of the Skeleton. *Am J Med Genet C Semin Med Genet* (2012) 160C(3):165–74. doi: 10.1002/ajmg.c.31336
29. Romano S, Maffei P, Bettini V, Milan G, Favaretto F, Gardiman M, et al. Alstrom Syndrome is Associated With Short Stature and Reduced GH Reserve. *Clin Endocrinol (Oxf)* (2013) 79(4):529–36. doi: 10.1111/cen.12180
30. Lucas-Herald AK, Kinning E, Iida A, Wang Z, Miyake N, Ikegawa S, et al. A Case of Functional Growth Hormone Deficiency and Early Growth Retardation in a Child With IFT172 Mutations. *J Clin Endocrinol Metab* (2015) 100(4):1221–4. doi: 10.1210/jc.2014-3852
31. Stephen J, Vilboux T, Mian L, Kuptanon C, Sinclair CM, Yildirimli D, et al. Mutations in KIAA0753 Cause Joubert Syndrome Associated With Growth Hormone Deficiency. *Hum Genet* (2017) 136(4):399–408. doi: 10.1007/s00439-017-1765-z
32. Marchini A, Ogata T, Rappold GA. A Track Record on SHOX: From Basic Research to Complex Models and Therapy. *Endocr Rev* (2016) 37(4):417–48. doi: 10.1210/er.2016-1036
33. Upners EN, Jensen RB, Rajpert-De Meyts E, Duno M, Aksglaede L, Juul A. Short Stature Homeobox-Containing Gene Duplications in 3.7% of Girls With Tall Stature and Normal Karyotypes. *Acta Paediatr* (2017) 106(10):1651–7. doi: 10.1111/apa.13969
34. Hannema SE, van Duyvenvoorde HA, Prensler T, Yang RB, Mueller TD, Gassner B, et al. An Activating Mutation in the Kinase Homology Domain of the Natriuretic Peptide Receptor-2 Causes Extremely Tall Stature Without Skeletal Deformities. *J Clin Endocrinol Metab* (2013) 98(12):E1988–98. doi: 10.1210/jc.2013-2358
35. Tatton-Brown K, Seal S, Ruark E, Harmer J, Ramsay E, Del Vecchio Duarte S, et al. Mutations in the DNA Methyltransferase Gene DNMT3A Cause an Overgrowth Syndrome With Intellectual Disability. *Nat Genet* (2014) 46(4):385–8. doi: 10.1038/ng.2917
36. Heyn P, Logan CV, Fluteau A, Challis RC, Auchynnikava T, Martin CA, et al. Gain-of-function DNMT3A Mutations Cause Microcephalic Dwarfism and Hypermethylation of Polycomb-regulated Regions. *Nat Genet* (2019) 51(1):96–105. doi: 10.1038/s41588-018-0274-x

**Conflict of Interest:** The authors declare that the research was conducted in the absence of any commercial or financial relationships that could be construed as a potential conflict of interest.

Copyright © 2021 Weiss, Eberle, Roeth, de Bruin, Lui, Paramasivam, Hinderhofer, van Duyvenvoorde, Baron, Wit and Rappold. This is an open-access article distributed under the terms of the Creative Commons Attribution License (CC BY). The use, distribution or reproduction in other forums is permitted, provided the original author(s) and the copyright owner(s) are credited and that the original publication in this journal is cited, in accordance with accepted academic practice. No use, distribution or reproduction is permitted which does not comply with these terms.