



Universiteit
Leiden

The Netherlands

Peer coaching as a population approach to increase physical activity in older adults

Vijver, P.L. van de

Citation

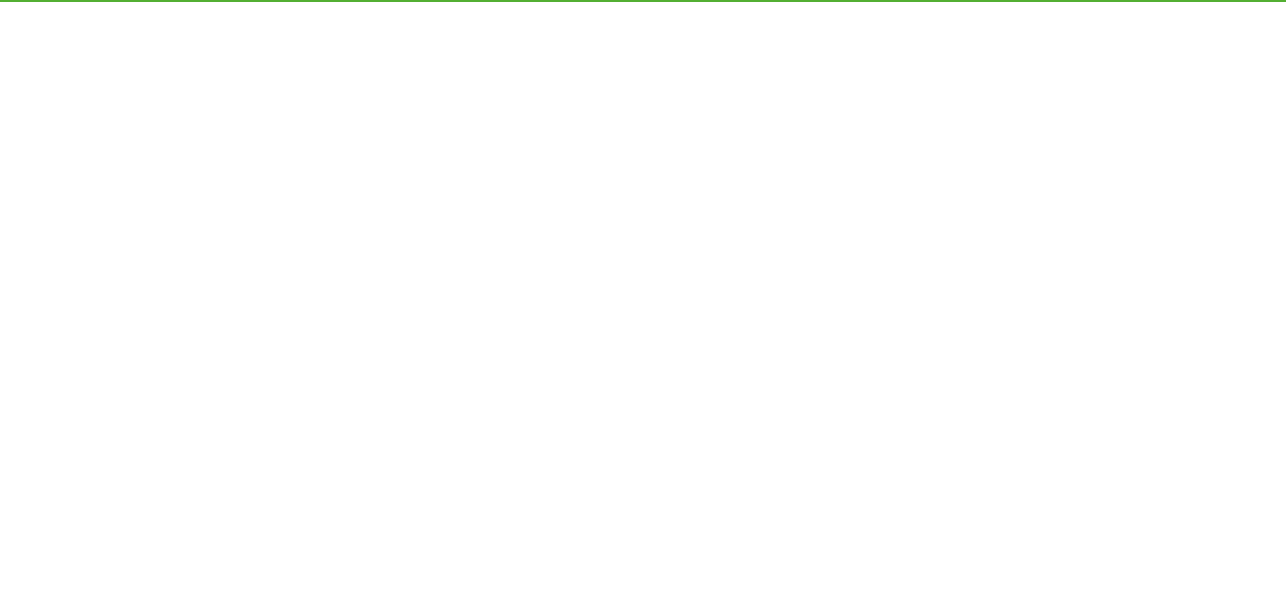
Vijver, P. L. van de. (2022, April 12). *Peer coaching as a population approach to increase physical activity in older adults*. Retrieved from <https://hdl.handle.net/1887/3283473>

Version: Publisher's Version

License: [Leiden University Non-exclusive license](#)

Downloaded from: <https://hdl.handle.net/1887/3283473>

Note: To cite this publication please use the final published version (if applicable).



CHAPTER 4

Self-organizing peer coach groups to increase daily physical activity in community dwelling older adults

Paul van de Vijver, Frank Schalkwijk, Mattijs Numans, Joris Slaets & David van Bodegom

Published as:

Van de Vijver PL, Schalkwijk FH, Numans ME, Slaets, JPJ, Van Bodegom D

Self-organizing peer coach groups to increase daily physical activity in community dwelling older adults.

Preventive Medicine Reports 2020;20:101181.

ABSTRACT

Many older adults do not reach the recommended level of physical activity, despite many professional-delivered physical activity interventions. Here we study the implementation of a novel physical activity intervention for older adults that is self-sustainable (no financial support) and self-organizing (participants act as organizers) due to peer coaching. We implemented three groups and evaluated process and effect using participatory observations, questionnaires, six-minute walk tests and body composition measures from October 2016 to September 2018. The intervention was implemented by staff without experience in physical activity interventions. Facilitators were a motivated initiator and a non-professional atmosphere for participants to take ownership. Barriers were the absence of motivated participants to take ownership and insufficient participants to ensure the presence of participants at every exercise session. The groups exercised outside five days a week and were self-organizing after 114, 216 and 263 days. The initial investments were 170€ for sport equipment and 81–187 h. The groups reached 118 members and a retention of 86.4% in two years. The groups continue to exist at the time of writing and are self-sustainable. Quality of life increased 0.4 on a ten-point scale (95% CI 0.1–0.7, $p=0.02$) and six-minute walk test results improved with 33 m (95% CI 18–48, $p<0.01$) annually. Self-organizing peer coach groups for physical activity are feasible, have positive effects on health and require only a small investment at the start. It is a sustainable and potentially scalable intervention that could be a promising method to help many older adults age healthier.

INTRODUCTION

Daily physical activity is effective at preventing many age-related diseases such as diabetes and cardiovascular diseases and improving mobility and mental health.¹ In spite of these health benefits, approximately half of adults older than 60 worldwide do not meet the recommended level of physical activity.^{2,3} Many interventions aiming to increase or intensify physical activity are proven effective in studies, but rarely reach practice.^{2,4} Transferring effective programs into real world settings and maintaining them there is a complicated, long-term process depending on how well the program is implemented, and whether the program is sustainable.⁴ Thorough implementation increased effect sizes of intervention on average two to three times.⁴ However, over the past thirty years only 3% of physical activity studies focussed on implementation and dissemination.⁵ A study shows that the decision to adopt an intervention by policy makers is depending on data on effectiveness, reach and costs of operating at scale.⁶ To increase the likelihood of successful implementation and scale up of population physical activity interventions elsewhere, characterizing parameters of implementation setting, identifying stakeholder and identifying barriers and facilitators of interventions is necessary.⁷

Factors affecting the implementation process are the intervention (e.g. compatibility, adaptability), the provider of the intervention (e.g. perceived need, perceived benefits, self-efficacy, skills), the organization (e.g. innovation, work climate, communication) and the community (e.g. politics, funding, policy).^{4,7,8} Of these factors, one of the main barriers for successful sustainable implementation at scale are costs and scarcity of professionals to deliver these intervention.⁹⁻¹¹ Physical activity interventions for older adults can cost 1000 dollar or more per participant.¹² Peer coaching, in which participants act as coach and organizer is a novel method without these barriers.¹³⁻¹⁵ A systematic review showed substantial health benefits for a variety of peer interventions, although not in all.¹⁶ Further research showed that peer-based interventions benefit if they are (co-)developed by peers.¹⁷ Moreover, the use of peers increased the long term maintenance of physical activity interventions.¹⁸ Another study suggested however that peers need regular supervision.¹⁷ In a previous study we described the Vitality Club, a self-organizing physical activity intervention that exercises outside five days a week and sustainably activated a group of 70 older adults for over 6 years. Participants attended on average two and a half days a week and perceived both subjective and objective improvements in health and well-being.¹⁹ The first Vitality Club started in 2010 by older adults themselves and at the time of writing continues to exist with over 150 members without any professionals or financial support involved.¹⁹ This local intervention managed to

increase physical activity in large numbers of older adults in a sustainable way, but to improve population health it must be delivered at scale.⁸ The initial Vitality Club was created by already motivated older adults who are still organizing it, and the question remains if it is feasible for healthcare professionals to implement a similar self-organizing physical activity intervention in a real-world setting that eventually will be sustained and organised by participants themselves.

Therefore, we studied the implementation of a peer coach physical activity intervention for older adults in a real-world setting and evaluate factors affecting implementation, effectiveness on health and well-being, costs, implementation setting and stakeholders. We initiated three new peer coach groups in different neighbourhoods in Leiden. This implementation study is necessary for future dissemination of the intervention. Also, the results can have important implications for the wider use of peer coaching in health promotion or disease management, where peer coaching could also be a novel method of intervention delivery for its promising sustainable and low-cost characteristics.

METHODS

Study Design

The study took place from October 2016 till September 2018. We implemented three peer coach groups in three neighbourhoods in Leiden, a medium sized town in The Netherlands with 120 000 inhabitants. Number of inhabitants in the neighbourhoods ranged from 11 149 to 21 467. The proportion of inhabitants older than 65 ranged from 11.8 to 18.1% in the neighbourhoods. Leiden is a city in a densely populated area with a different demographics than the original setting, which was a large village in one of the more rural areas of the Netherlands. Social cohesion tends to weaker in cities and neighbours do not know each other. This makes it an interesting location to implement an intervention that is dependent on social cohesion.

The following practical implementation steps were conducted. Firstly, we identified and contacted public places suitable for exercise in the neighbourhood, with a possibility to store a small box with sport equipment. Secondly, we supplied sport equipment for the first ten participants, including 1kg dumbbells, mini soccer balls and elastic bands. The costs per set were around 17 EUR. Thirdly, we recruited participants using a less formal and low budget recruitment strategy with flyers, free advertorials in local newspapers and neighbourhood associations. There was no formal age requirement, but advertisement mentioned that the exercise intensity was aimed at people aged older than 55. There was no required baseline level of physical activity, but participants had to come to the Vitality Club independently. Finally, peer coaches were recruited from the participants as the groups grew. To empower participants to take ownership we created an atmosphere where participants were free in the way they organised the exercise sessions. We always stressed that it was not a professional intervention, but a group of neighbourhood peers exercising together. All participants that volunteered to take the role of peer coach could become a peer coach, and they distributed the exercise sessions among the peer coaches. During the implementation phase, exercise sessions for which no peer coach was available were led by the researchers until a peer coach was recruited. The switch from staff to peer coach was done during one session in which staff and peer coach together led the session. The groups gathered 5 days a week from 09.00 to 10.00 in the morning. The exercises were free format, but mostly of moderate intensity. Most coaches focused on cardiovascular exercises, muscle strengthening exercises and exercises for stability and flexibility. However, because of the free format, each coach could choose any kind of exercise. Peer coaches received only a non-formal training through observing sessions led by researchers and other peer coaches. Researchers were recently graduated medical doctors who did not received special training to

guide exercise sessions. Peers only received supervision when requested. To make the peer groups fully self-sustainable (financially independent) a voluntary fee of 1 EUR per week was installed. The peer groups themselves managed the funds and used it to cover expenses and buy additional sports equipment as the groups grew. Participants were made aware that attendance was at their own risk and health issues would be handled similar as all outside injuries would, minor injuries at home or the general practitioner, major issues by calling the emergency number.

We made participatory observations and conducted semi-structured interviews to identify facilitators and barriers for the implementation of the peer coach group. All participants also received a questionnaire at baseline and every four months to assess personal facilitators and barriers. We recorded daily presence and conducted a six-minute walk test and bioelectrical impedance analysis (BIA) at baseline and every four months. Participants that did not participate in the exercise group for 90 days were considered drop-outs. For the BIA, the OMRON BF511 body composition monitor was used (Omron Healthcare Ltd., Kyoto, Japan). The questionnaire was similar to the questionnaire we used before and included questions on demographic characteristics, physical activity frequency and quality of life (Supplementary S1).¹⁹ At the fifth participation we requested informed consent for participation in the study since we did not want to interrupt the real-world setting and wanted people to be able to join the club without participating in the study. After people joined the Vitality Club, consent was always asked to be included in the study. All study participants in the study provided written informed consent before assessment started.

Statistics

We analysed the intraindividual change over time using a Linear Mixed Model. This model separates within-person change and between-person differences in outcomes over time.²⁰ The model showed that 79% of the variance in outcome is attributed to differences between individuals, warranting the use of this model. The model had a slightly better fit using a quadratic regression, but the change after one year was similar in the quadratic and linear regression. Therefore, we used a linear regression because the estimates are more easily interpreted. The model was adjusted for sex, age at baseline, height and weight with unstructured covariance and intercept and time as a random variable. The analysis of body composition change was not adjusted for weight. Predicted six-minute walk test results were calculated using the regression of Troosters et al. (1999) and were used as reference values.²¹ Statistical analyses are performed with IBM SPSS Statistics for Macintosh, Version 25.0, Armonk, NY: IBM Corp.

RESULTS

The practical implementation strategy was flexible in different settings and easy to conduct by staff without experience in physical activity interventions. This implementation strategy resulted in three peer coach groups with the essential elements of the intervention (exercising, self-organizing and sustainable). The stakeholders of the intervention are the initiator, the participants, the peer coaches and the owner of the exercise/storage location. Implementation facilitators are collaborative stakeholders, a well-informed and motivated initiator and a non-professional atmosphere for participants to take the role of peer coach. The barriers are the absence of motivated participants willing to take over the exercise sessions and insufficient number of participants to ensure the presence of participants at every exercise session. To overcome these barriers the peer coach group needs to be of a sufficient size, which could take time due to the less formal recruitment strategy. An initiator needs to stay motivated until the group reaches a critical mass.

Table 4.1 shows baseline characteristics of participants and peer coaches. In total 132 people were asked for informed consent, 118 people provided informed consent for the study, resulting in an inclusion rate of 89%. Average age was 66.9 (SD 6.4) year, 74% of participants were female, 73% was retired and 33% was living alone. Of all participants 56% had a high educational level. Monthly disposable income was under €1000 for 12% of participants, between €1000 and €3000 for 63% and more than €3000 for 25% of participants.

At the start, 47% of participants were recruited by an article in the local newspaper, 15% via word of mouth and 8% via a flyer delivered at home. Throughout the study period, most participants were recruited via word of mouth (39%). Figure 4.1 shows the number of participants of the peer coach groups over time. We identified several facilitators and barriers for joining and remaining with the peer coach group from our semi structured interviews and questionnaires. The main facilitators were exercising outside, exercising early morning, the feeling of social obligation to the group, variations in exercises due to different peer coaches, low participation fee, the fact that no formal enrolment was required and that the participants were of similar age. Personal barriers to join were the distress of joining a new group of people and not being sure of having the adequate physical fitness to participate, a lack of motivation and the early timing of the sessions. Motivational facilitators for the peer coaches were the satisfaction of helping peers live healthier, being in charge of the intervention and being able to adjust exercises to personal preferences. A barrier to becoming a peer coach was the perceived stress of leading a group.

Table 4.1 Baseline characteristics of study participants

| | Peer coaches | | All participants | |
|---------------------------------------|--------------|-------|------------------|-------|
| Number | 13 | | 118 | |
| Age in years, mean (<i>SD</i>) | 68.8 | (2.6) | 66.7 | (6.6) |
| Women, n (%) | 9 | (69%) | 87 | (74%) |
| Retired, n (%) | 12 | (92%) | 82 | (73%) |
| Educational level, n (%) ^a | | | | |
| Low | 1 | (8%) | 22 | (20%) |
| Middle | 3 | (23%) | 27 | (24%) |
| High | 9 | (69%) | 62 | (56%) |
| Disposable income, n (%) ^b | | | | |
| <€1000 | 1 | (13%) | 9 | (12%) |
| €1000 - €3000 | 4 | (50%) | 46 | (63%) |
| >€3000 | 3 | (37%) | 18 | (25%) |
| Living alone, n (%) | 1 | (8%) | 37 | (33%) |

Total number of participants varies due to missing data. ^aLow educational level is International Standard Classification of Education (ISCED) 0-2. Middle educational level is ISCED 3-4. High educational level is ISCED 5-8. ^bDisposable income per household is total income per household minus taxes and social fees.

The peer coach groups became completely self-organizing 114 (group 1), 216 (group 2) and 263 (group 3) days after the start. At the time of writing, the groups exercise five times a week and are still growing without any supervision from the researchers for 1156 (group 1), 733 (group 2) and 610 (group 3) days after becoming completely self-organizing. Until the groups became self-organizing, the researcher invested one hour a day to lead the group exercises. The time investment of the researcher gradually declined when a peer coach was recruited from the participants for one or several weekdays. Total investment per group was 170€ for sport equipment and 81 (group 1), 154 (group 2) and 187 (group 3) hours. On average participants attended the peer group 1.5 (SD 0.8) days per week. The median number of participants on a regular day was 6 (range 0-18). On a weekly basis the median number of unique participants was 28 (range 11-56). During the study period 16 participants were absent for more than 90 days and were considered dropouts, resulting in a retention of 86.4% during the study period of 2 years. The attrition rate was 0.19 per person-year of observation (total of 82.1 person-years of observation). Only 3 participants returned after an absence of 90 days, but were still considered drop-outs. There were 4 participants that were absent for more than 60 days, but less than 90 days when the study ended and were not considered drop-outs. There were

between 3 and 5 peer coaches per group at any time. One peer coach had to stop due to illness. It was easier to replace an absent peer coach (e.g. illness) with more available peer coaches. Some participants preferred the teaching style of a certain peer coach and selectively participated in the peer group on days when that peer coach was coaching.

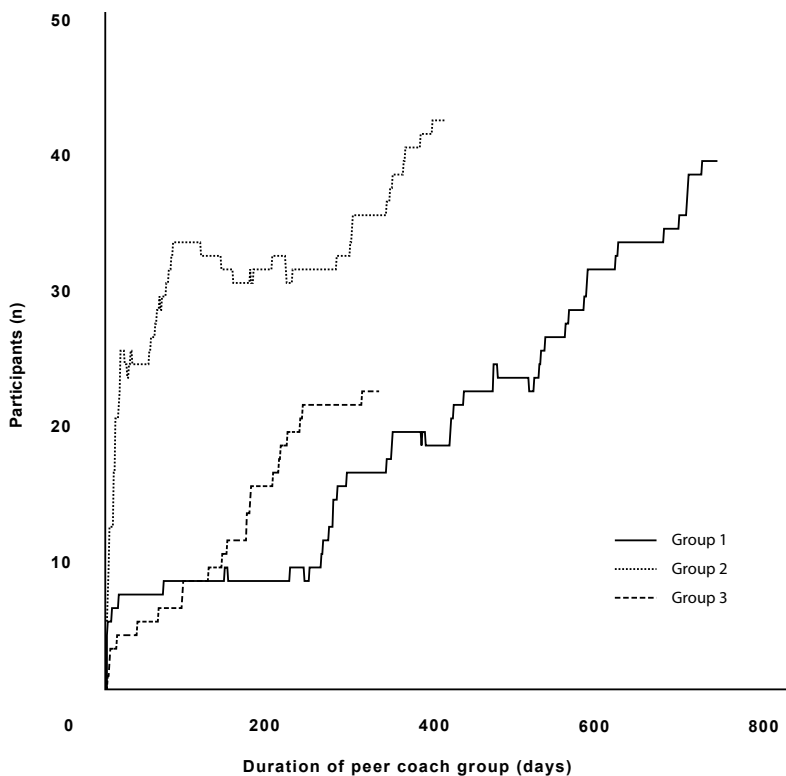


Figure 4.1 Growth of the peer coach groups. The number of participants of the peer coach group over time October 2016 to September 2018. Group 1 started in October 2016, group 2 started in August 2017 and group 3 started in November 2017. Only participants that provided informed consent are included. Participants that did not participate in the last three months were considered a drop-out.

Table 4.2 shows baseline characteristics and yearly change of health and well-being. We had 244 measurements for the 118 participants, an average of 2.1 measurements per participant. Participants reported an annual increase of 1.8 days per week of physical activity > 30 minutes (95% CI 1.0-2.5, $p<0.01$). Self-reported quality of life improved with 0.4 points on a ten-point scale per year (95% CI 0.1-0.7, $p=0.02$). Six-minute walk test results increased with 33 meters per year (95% CI 18-48, $p<0.01$).

Participants lost 1.4 kg annually (95% CI -2.6--0.3, $p=0.01$). BMI reduced with 0.5 points (95% CI -0.9--0.1, $p=0.02$). In the general population six-minute walk test results decline on average 5 meters a year due to ageing.²¹ The group started with a 6MWT result close to the predicted result for their respective age, gender and height, 99% of predicted and improved with 6.2 percent points (95% CI 3.8-8.5, $p<0.01$) after one year. Participants improved independent of their baseline results.

Table 4.2 Baseline characteristics and yearly change of health and well-being

| | Baseline (SD) | | Yearly change (SE) ^a | | p-value |
|--|---------------|--------|---------------------------------|-------|---------|
| Self-reported days per week >30 minutes PA | 2.5 | (1.8) | +1.8 | (0.3) | <0.01 |
| Quality of life (1-10) | 7.7 | (1.0) | +0.4 | (0.1) | 0.02 |
| Observed 6MWT result in meters | 607 | (71) | +32.9 | (7.3) | <0.01 |
| Predicted 6MWT result in meters ^b | 614 | (55) | -5.3 | (0.0) | |
| Observed / predicted 6MWT * 100% | 99.3 | (12.1) | +6.2 | (1.2) | <0.01 |
| Body weight (kg) | 74.5 | (12.6) | -1.4 | (0.6) | 0.01 |
| BMI (kg/m ²) | 25.9 | (3.6) | -0.5 | (0.2) | 0.02 |
| Fat percentage | 32.8 | (9.5) | -1.0 | (0.6) | 0.08 |
| Muscle percentage | 28.9 | (4.5) | -0.1 | (0.5) | 0.89 |
| Visceral fat score (1-20) | 9.1 | (3.4) | +0.4 | (0.2) | 0.82 |

^aEstimates derived from a linear mixed model adjusted for sex, age at baseline, height and weight, using 244 measurement moments from 118 participants. The analysis of body composition change was not adjusted for weight. ^bPredicted six-minute walk test distance calculated from the equation of Troosters et al. (1999). Data collected from October 2016 to September 2018. PA=physical activity, 6MWT=six-minute walk test, BMI=body mass index.

We also analysed a dose-response relation. Participants improved 0.3 meters per participated session (95% CI 0.1-0.5, $p=0.01$). No serious injuries were reported during the study period. Six participants (4%) reported a minor sport related injury. There was full recovery of all injuries.

DISCUSSION

This study shows a feasible implementation strategy to initiate peer groups as a daily physical activity intervention for community dwelling older adults. The peer coach groups became completely self-organizing after the initial researcher-led period and at the time of writing continued to exist and grow.

The implementation of peer coach groups comprised of practical steps that can be performed in a lot of different settings by different people. This study has been performed in the cultural background of West-Europe, but similar initiatives can be seen in South-America and Asia.²² However, depending on cultural etiquette, changes need to be made to the implementation strategy. There are several recommendations for others who want to implement this intervention. Key factors are the number of participants and empowerment of participants to take ownership. The first factor can be achieved with the same less formal recruitment strategy used in this study, but this method takes considerable time and initiators should be made aware of this from the start. The groups mostly grew through word of mouth, which does not require action but is hard to predict. The second factor depends on the atmosphere created by the initiator. We learned that the participants must be informed from the start that it will be a peer-led intervention. It must be stressed that almost all participants are able to lead an exercise session. Otherwise, participants will not feel empowered to take ownership. This study showed that when a group does take ownership, it is resilient and can exist for a long period without any supervision.

The sustainability of peer coach groups for physical activity in older adults can be understood from several theoretical perspectives. Firstly, peer coaches bring several advantages which are derived from social support, experiential knowledge, helper-therapy principle, social learning theory and social comparison theory.²³ Secondly, the groups are self-organizing and self-sustainable increasing self-efficacy and internal locus of control, which in turn are strong predictors of adherence.²⁴ Lastly, social interaction is an essential part of this physical activity intervention, which has additional benefits on adherence and on the well-being of participants.^{25,26}

From a practical perspective, as there are no paid professionals or costly sporting accommodations required, there are no fixed expenses for the intervention. Moreover, because the intervention is not dependent on scarce and costly professionals and can be set up anywhere in the public space, it is potentially scalable.

A limitation is that the intervention mostly attracts healthy active older adults with a high socioeconomic background. However, research on the first peer coach group that existed for over 6 years at the time showed that 50% of participants had low educational status.¹⁹ Also, healthy participants will become more frail due to ageing in the following years. We did not record race in this study. We are currently conducting a study with peer coach group for older adults with a migratory background in which we also include race. Another limitation is that this study tests the feasibility of only three peer coach groups in Leiden. To make the results more generally applicable we used neighbourhoods with three different average socioeconomic statuses to set up the peer coach groups. However, they are all situated in the same city thus being relatively similar. Additionally, due to small number of peer groups we were unable to formally compare different implementation processes to distinguish the optimal strategy. Finally, the effects of the peer coach intervention on its participants were not compared with a control group and causal relations must be taken cautiously. However, daily physical activity of participants increased while daily physical activity in older adults in general decline with increasing age.³

The unique aspect of this form of intervention is the absence of a professional. A common argument against peer coaching is that it is inferior and unsafe to use peers instead of professionals to lead the intervention. A systematic review however, showed that peer-based physical activity interventions were equally effective as interventions led by professionals for increasing physical activity.²⁷ Additionally, no study have shown a difference in safety between interventions delivered by peers or professionals.²⁸ Furthermore, in a randomized controlled trial comparing peers to professionals in a physical activity intervention, peer coaches were found to be equally or superior to professionals in levels of intervention implementation.¹⁸

Peer support is already used widely in disease prevention in diabetes, cardiovascular disease and cancer patient groups, to quit smoking or to stay sober in the Alcoholics Anonymous. However, most physical activity interventions still use a professional as primary leader of the intervention. We like to stress the possibility of increasing the role of the peers in physical activity intervention. This does not come with a decrease in quality and brings the big benefits of peer support, low costs, scalability and could reach a part of the population currently not reached by classic interventions.

CONCLUSION

It is feasible for healthcare professionals to implement a peer coach physical activity intervention for older adults that eventually is self-organizing and self-sustainable. A small investment of 170€ and 81-187 hour is needed to create a group that is self-supporting after 114-263 days. After this initial investment the groups are self-organizing and self-supporting and resilient for a long period. This novel form of intervention delivery could be a promising alternative model to curtail increasing healthcare expenditure and could potentially help large numbers of older adults age healthier.

REFERENCES

1. Vogel T, Brechat PH, Leprêtre PM, Kaltenbach G, Berthel M, Lonsdorfer J. Health benefits of physical activity in older patients: a review. *International journal of clinical practice*. 2009;63:303-320.
2. Hallal PC, Andersen LB, Bull FC, et al. Global physical activity levels: surveillance progress, pitfalls, and prospects. *The lancet*. 2012;380:247-257.
3. Sun F, Norman IJ, While AE. Physical activity in older people: a systematic review. *BMC public health*. 2013;13:449.
4. Durlak JA, DuPre EP. Implementation matters: A review of research on the influence of implementation on program outcomes and the factors affecting implementation. *American journal of community psychology*. 2008;41:327-350.
5. Milat AJ, Bauman AE, Redman S, Curac N. Public health research outputs from efficacy to dissemination: a bibliometric analysis. *BMC Public Health*. 2011;11:934.
6. Milat AJ, King L, Newson R, et al. Increasing the scale and adoption of population health interventions: experiences and perspectives of policy makers, practitioners, and researchers. *Health research policy and systems*. 2014;12:18.
7. Koorts H, Eakin E, Estabrooks P, Timperio A, Salmon J, Bauman A. Implementation and scale up of population physical activity interventions for clinical and community settings: the PRACTIS guide. *International Journal of Behavioral Nutrition and Physical Activity*. 2018;15:51.
8. McKay HA, Sims-Gould J, Nettlefold L, Hoy CL, Bauman AE. Implementing and evaluating an older adult physical activity model at scale: framework for action. *Translational Journal of the American College of Sports Medicine*. 2017;2:10-19.
9. Hall KS, Sloane R, Pieper CF, et al. Long-term changes in physical activity following a one-year home-based physical activity counseling program in older adults with multiple morbidities. *Journal of aging research*. 2010;2011.
10. van der Bij A, Laurant M, Wensing M. Effectiveness of physical activity interventions for older adults: a review. *American journal of preventive medicine*. 2002;22:120.
11. De Ponte G, Mans L, Di Sisto M, Van de Pas R. Health workforce shortages and international mobility in the EU. *Health Workers for all and all for Health Workers*. 2014.
12. Groessl EJ, Kaplan RM, Blair SN, et al. A cost analysis of a physical activity intervention for older adults. *Journal of Physical Activity and Health*. 2009;6:767-774.
13. Matz-Costa C, Howard EP, Castaneda-Sceppa C, Diaz-Valdes Iriarte A, Lachman ME. Peer-based strategies to support physical activity interventions for older adults: A typology, conceptual framework, and practice guidelines. *The Gerontologist*. 2019;59:1007-1016.
14. Thom DH, Ghorob A, Hessler D, De Vore D, Chen E, Bodenheimer TA. Impact of peer health coaching on glycemic control in low-income patients with diabetes: a randomized controlled trial. *The Annals of Family Medicine*. 2013;11:137-144.
15. Sokol R, Fisher E. Peer support for the hardly reached: a systematic review. *American journal of public health*. 2016;106:e1-e8.
16. Ramchand R, Ahluwalia SC, Xenakis L, Apaydin E, Raaen L, Grimm G. A systematic review of peer-supported interventions for health promotion and disease prevention. *Prev Med*. 2017;101:156-170.

17. Raja S, Teti M, Knauz R, et al. Implementing peer-based interventions in clinic-based settings: Lessons from a multi-site HIV prevention with positives initiative. *Journal of HIV/AIDS & Social Services*. 2008;7:7-26.
18. Buman MP, Giacobbi Jr PR, Dzierzewski JM, et al. Peer volunteers improve long-term maintenance of physical activity with older adults: a randomized controlled trial. *Journal of Physical Activity and Health*. 2011;8:S257-S266.
19. Van de Vijver PL, Wielens H, Slaets JPJ, Van Bodegom D. Vitality club: a proof-of-principle of peer coaching for daily physical activity by older adults. *Translational behavioral medicine*. 2018;8:204-211.
20. Shek DT, Ma C. Longitudinal data analyses using linear mixed models in SPSS: concepts, procedures and illustrations. *The Scientific World Journal*. 2011;11:42-76.
21. Troosters T, Gosselink R, Decramer M. Six minute walking distance in healthy elderly subjects. *The European respiratory journal*. 1999;14:270-274.
22. González Ramos RM, Madrazo Ordaz DE, Osorio Núñez M. Conocimientos sobre salud bucal en los círculos de abuelos. *Revista Cubana de Estomatología*. 2013;50:284-291.
23. Solomon P. Peer support/peer provided services underlying processes, benefits, and critical ingredients. *Psychiatric rehabilitation journal*. 2004;27:392.
24. McAuley E, Jerome GJ, Elavsky S, Marquez DX, Ramsey SN. Predicting long-term maintenance of physical activity in older adults. *Prev Med*. 2003;37:110-118.
25. McAuley E, Blissmer B, Marquez DX, Jerome GJ, Kramer AF, Katula J. Social relations, physical activity, and well-being in older adults. *Preventive medicine*. 2000;31:608-617.
26. Smith GL, Banting L, Eime R, O'Sullivan G, Van Uffelen JG. The association between social support and physical activity in older adults: a systematic review. *International Journal of Behavioral Nutrition and Physical Activity*. 2017;14:56.
27. Ginis KAM, Nigg CR, Smith AL. Peer-delivered physical activity interventions: an overlooked opportunity for physical activity promotion. *Translational behavioral medicine*. 2013;3:434-443.
28. Castro CM, Pruitt LA, Buman MP, King AC. Physical activity program delivery by professionals versus volunteers: the TEAM randomized trial. *Health Psychology*. 2011;30:285.