



Universiteit
Leiden

The Netherlands

Predicting outcomes in patients with kidney disease: methodology and clinical applications

Ramspek, C.L.

Citation

Ramspek, C. L. (2022, March 22). *Predicting outcomes in patients with kidney disease: methodology and clinical applications*. Retrieved from <https://hdl.handle.net/1887/3280226>

Version: Publisher's Version

License: [Licence agreement concerning inclusion of doctoral thesis in the Institutional Repository of the University of Leiden](#)

Downloaded from: <https://hdl.handle.net/1887/3280226>

Note: To cite this publication please use the final published version (if applicable).



11

Predicting mortality risk on dialysis and conservative care: development and internal validation of a prediction tool for older patients with advanced chronic kidney disease

Chava L. Ramspek, Wouter R. Verberne, Marjolijn van Buren, Friedo W. Dekker, Prof. dr. Willem Jan W. Bos, Merel van Diepen

Clin Kidney J. 2020 Mar 17;14(1):189-196.

Abstract

Background. Conservative care may be a valid alternative to dialysis for certain older patients with advanced chronic kidney disease (CKD). A model that predicts patient prognosis on both treatment pathways could be of value in shared decision-making. Therefore, the aim is to develop a prediction tool that predicts the mortality risk for the same patient for both dialysis and conservative care from the time of treatment decision.

Methods. CKD stage 4/5 patients of 70 years and older, treated at a single center in the Netherlands, were included between 2004 and 2016. Predictors were collected at treatment decision and selected based on literature and an expert panel. Outcome was 2-year mortality. Basic and extended logistic regression models were developed for both the dialysis and conservative care group. These models were internally validated with bootstrapping. Model performance was assessed with discrimination and calibration.

Results. In total, 366 patients were included of which 126 chose conservative care. Pre-selected predictors for the basic model were age, eGFR, malignancy and cardiovascular disease. Discrimination was moderate, with optimism-corrected C-statistics ranging from 0.675 to 0.750. Calibration plots showed good calibration.

Conclusions. A prediction tool that predicts 2-year mortality was developed to provide older advanced CKD patients with individualized prognosis estimates for both dialysis and conservative care. Future studies are needed to test whether our findings hold in other CKD populations. Following external validation, this prediction tool could be used to compare a patient's prognosis on both dialysis and conservative care, and help inform treatment decision-making.

Introduction

End-stage kidney disease (ESKD) is an increasingly large public health burden, with high morbidity and mortality rates.^{1,2} Treatment options for ESKD consist of kidney replacement therapy (KRT) or non-dialytic conservative care (CC). CC consists of on-going treatment and symptom control with medication and diet/lifestyle instructions, and mainly focusses on quality of life. For older patients dialysis treatment has become the most common treatment in more economically developed countries. However, as the ESKD population ages and focus shifts towards quality of life, a CC approach has emerged as a treatment alternative to dialysis.³ Studies have shown that in some patient groups dialysis might not have a survival benefit compared to CC, not to mention the treatment burden that comes with dialysis.^{4,5} A recent study showed that the top two health outcome priorities in older chronic kidney disease (CKD) patients are maintaining independence and staying alive.⁶ It is therefore important to openly discuss all treatment options, expected outcomes, and the patient's preferences in patients with advanced CKD.^{5,7}

In order to foster shared decision-making and personalized treatment, patients should be provided with accurate information on their prognosis for each treatment strategy.⁵ There is a large range in survival time of patients on both dialysis and CC. This brings challenges in communicating information on prognosis and selecting patients who would benefit from dialysis or CC.^{9,10} Though multiple prediction models have been developed that predict mortality risk in dialysis patients, no models exist that predicts the prognosis on CC.¹¹ More importantly, no models have been developed that predict mortality for both dialysis and CC at the time of treatment decision. Clinically speaking this is the most relevant time of prediction as it could provide a single patient with their hypothetical prognosis on both dialysis and conservative care. Such a prediction tool could be employed in a decision aid at the time of treatment choice and be of value in patient discussions when considering potential benefits and burdens of both treatment options.^{8,12}

The aim of the current study is therefore to develop and internally validate two prediction models of mortality risk in older CKD patients: one model that predicts mortality in patients who chose dialysis and another model that predicts mortality in patients that chose CC. By calculating individual mortality risks, we hope to facilitate the shared decision process in which benefits and burdens that come with dialysis and CC are considered.

Materials and Methods

Study design and population

The TRIPOD statement was followed for the reporting and methods of this study¹³ The study population is a retrospective cohort of patients of 70 years or older with stage 4/5 CKD, who received nephrology care at a non-academic teaching hospital in the Netherlands.⁴ Patients were included when the choice for dialysis or CC was registered in the patient file. As standard care, the physician initiated a shared decision-making process on the

preference for dialysis or CC when the estimated glomerular filtration rate (eGFR) dropped below 20 mL/min/1.73m². Patients received counselling on different treatment pathways from a multidisciplinary team. Baseline is defined as the time of treatment choice, this means that not all patients in the dialysis group started dialysis during follow-up and some died before initiation. Likewise, in the CC group patients could still choose to initiate dialysis. Analyses were performed in an intention-to-treat fashion, based on the baseline treatment choice. Inclusion was between October 31st 2004 and May 1st 2016. Exclusion criteria were an age below 70 years, acute kidney failure or no recorded treatment decision. The study design and population have previously been described in more detail.⁴⁻¹⁴ The study was approved by the local research ethics committee.

Data collection

Baseline data including patient history, clinical parameters and laboratory values, were collected from electronic medical records at the time of treatment decision. The eGFR was calculated using the CKD-EPI Creatinine formula. If laboratory or clinical parameters were not recorded at baseline, the most recent measurement was included within 3 weeks. Definitions of collected predictors are given in the supplemental material.

Predictors and outcome

From the baseline characteristics, a subset of predictors was chosen based on previous literature and clinical expertise of the study group.¹⁵⁻¹⁶ Etiological studies in conservatively treated patients, and models predicting mortality in dialysis patients were considered.⁵
¹¹⁻¹⁵⁻¹⁷ Three clinical experts (WJB, WV, MvB) were asked to rank a list of 13 candidate predictors in order of importance. A basic model with the top 5 predictors and an extended model with the top 10 predictors (with a total of 10 degrees of freedom) were selected based on the expert ranking and consensus meeting (expert ranking and candidate predictors shown in supplement). The goal of this selection method was to prevent overfitting whilst retaining enough variables for an accurate prediction.¹⁸⁻¹⁹ The outcome of the prediction model was 2-year mortality, selected based on clinical relevance and optimization of sample size. Follow up data on death were available until February 20th, 2019.

Statistical analysis

Continuous baseline characteristics are presented as mean values with standard deviations or median values with interquartile ranges when not normally distributed. Categorical variables are presented as numbers with percentages.

Missing data was assumed to be largely missing at random. To correct for missing data a 10-fold multiple imputation with fully conditional specification was performed using the R package 'mice'. All candidate predictors and the outcome were included in the imputation model.²⁰⁻²¹ The selected predictors were entered in a logistic regression model.²² The

risk models were internally validated and adjusted for overfitting by performing a 250-fold bootstrap analysis in each imputation dataset.²³ The prognostic index (PI) can be calculated with the models estimated coefficients (β), individual predictor values (x), and the model constant (a), as $PI = a + x_1 * \beta_1$. With this prognostic index the mortality risk (P) can be calculated as $P = e^{PI} / (1 + e^{PI})$.

The predictive performance of the models was assessed by determining the discrimination and calibration. Discrimination is shown by the C-statistic and indicates how well the model can distinguish between people with and without the outcome. Optimism-corrected C-statistics were calculated with bootstrapping and pooled over the ten imputation datasets with Rubin's Rules.²⁴ The calibration is an absolute measure for the accuracy of the predicted probabilities and can be summarized in a calibration slope, intercept, calibration-in-the-large and calibration plot. The optimism-corrected slope and intercept were calculated in the bootstrapped samples. A calibration slope smaller than 1 in internal validation implicates overfitting and to correct for this the regression coefficients are shrunken by multiplying them by the slope. The calibration-in-the-large is the observed risk of mortality in the whole population compared to the predicted risk. A calibration plot shows the predicted risk plotted against the observed risk per decile of predicted probability, augmented by a smoothed (loess) regression line.²⁵ The 45° line indicates perfect agreement between predicted and observed risks. The shrinkage adjusted coefficients form the final model and were pooled over the imputed datasets by calculating the mean.²⁴ The shrunken models were then applied for all patients to calculate probability differences between the dialysis and CC models. All analyses were performed in R version 3.5.1.

Results

Baseline characteristics

A total of 366 patients were included. Of these patients 240 had the intention to start dialysis in the future and 126 had chosen CC. Baseline characteristics stratified by outcome (2-year mortality) are shown in Table 1 and 2. Most data were complete, with missing data for serum albumin, C-reactive protein (CRP), and body-mass index (BMI). In the dialysis group, patients who died within two years were more often male, had considerably more cardiovascular disease, had slightly more malignancies and diabetes and had a higher CRP at baseline. In the CC group, patients who died within two years were more often male, less often diabetic, had more cardiovascular disease and had a considerably lower eGFR at baseline than patients who survived more than two years. When comparing the dialysis group to the CC group, the largest differences are seen for age and gender; the CC group was 6 years older on average, and had a higher percentage of females.

Table 1: Baseline characteristics, recorded at treatment decision for the dialysis choice group.

	Total n = 240	>2 years survival n = 162	≤2 years survival n = 78
Age	76 (72-79)	75 (72-78)	77 (73-81)
Gender (n, % male)	160 (67%)	105 (65%)	55 (71%)
Primary kidney disease (n, %)			
Vascular disease	103 (43%)	72 (44%)	31 (40%)
Diabetes mellitus	40 (17%)	27 (17%)	13 (17%)
Other	39 (16%)	27 (17%)	12 (15%)
Unknown	58 (24%)	36 (22%)	22 (28%)
Comorbidities (n, %)			
Cardiovascular disease	176 (73%)	105 (65%)	71 (91%)
Ischemic heart disease	109 (45%)	64 (40%)	45 (58%)
Left ventricular dysfunction	67 (30%)	29 (18%)	38 (49%)
Peripheral vascular disease	111 (46%)	61 (38%)	50 (64%)
Malignancy	26 (11%)	16 (10%)	10 (13%)
Diabetes mellitus	95 (40%)	62 (38%)	33 (42%)
Laboratory parameters			
eGFR (ml/min/1.73m ²)	11.7 (4.0)	11.7 (3.8)	11.9 (4.5)
Serum albumin (g/L) *	39.2 (4.6)	40.0 (3.8)	37.4 (5.6)
CRP (nmol/L) *	47.6 (28.6-95.2)	47.6 (21.4-57.1)	76.2 (28.6-166.7)
Clinical parameter			
Body-mass index (kg/m ²)*	27.0 (4.5)	27.2 (4.6)	26.4 (4.4)

Normally distributed continuous variables are presented as mean (SD), not normally distributed continuous values are presented as median (IQR). Categorical variables are presented as n (%). Abbreviations: eGFR: estimated Glomerular Filtration Rate (calculated with the CKD-EPI Creatinine formula), CRP: C-reactive protein, HD: haemodialysis. Serum albumin can be converted to mmol/L by multiplying by 0.0150. CRP can be converted to mg/L by multiplying by 0.105. *for the variables serum albumin, CRP and Body-mass index 54 (23%), 67 (28%) and 44 (18%) patients had missing data, respectively.

Table 2: Baseline characteristics, recorded at treatment decision for the conservative care group.

	Total n = 126	>2 years survival n = 55	≤2 years survival n = 71
Age	82 (79-86)	82 (78-86)	83 (80-86)
Gender (n, % male)	68 (54%)	25 (46%)	43 (61%)
Primary kidney disease (n, %)			
Vascular disease	65 (52%)	27 (49%)	38 (54%)
Diabetes mellitus	16 (13%)	7 (13%)	9 (13%)
Other	15 (12%)	10 (18%)	5 (7%)
Unknown	30 (24%)	11 (20%)	19 (27%)
Comorbidities (n, %)			
Cardiovascular disease	97 (77%)	38 (69%)	59 (83%)
Ischemic heart disease	56 (44%)	21 (38%)	35 (49%)
Left ventricular dysfunction	34 (27%)	8 (15%)	26 (37%)
Peripheral vascular disease	64 (51%)	23 (42%)	41 (58%)
Malignancy	17 (14%)	6 (11%)	11 (16%)
Diabetes mellitus	57 (45%)	27 (49%)	30 (42%)
Laboratory parameters			
eGFR(ml/min/1.73m ²)	13.4 (4.5)	15.1 (4.5)	12.1 (4.1)
Serum albumin (g/L) *	38.8 (3.5)	39.8 (2.4)	38.1 (4.0)
CRP (nmol/L) *	47.6 (28.6-123.8)	47.6 (19.0-109.5)	52.4 (31.0-123.8)
Clinical parameter			
Body-mass index (kg/m ²)*	26.2 (4.8)	27.3 (5.3)	25.1 (4.0)

*for the variables serum albumin, CRP and Body-mass index 17 (13%), 33 (26%) and 28 (22%) patients had missing data, respectively.

Follow-up data

All patients were followed for a minimum of 2 years or until death or loss to follow-up. The median time of follow-up was 37 (IQR: 17-58) months in the dialysis group and 17 (IQR: 9-34) months in the CC group. In the dialysis group 78 patients (33%) died within two years, and in the CC group 71 patients (56%). In total, seven patients were lost to follow-up and three patients received a kidney transplantation, these patients were assumed to survive for two years. In the group that chose dialysis a total of 146 (61%) patients initiated dialysis within the follow-up time, of these patients 115 initiated haemodialysis and 31 peritoneal dialysis. Dialysis initiation took place after a median of 5 (IQR: 2-14) months. In the CC group 2 patients eventually initiated haemodialysis. As this information is not yet known at time of prediction these patients remained in the CC group.

Model development

The following predictors were chosen for the basic models in dialysis and CC patients: age, eGFR, active malignancy, diabetes mellitus and the presence of cardiovascular disease. In the extended models the following predictors were added; gender, serum albumin and CRP at baseline. The predictor cardiovascular disease was split into the presence of ischemic heart disease, left ventricular dysfunction and peripheral vascular disease for the extended model. The selected predictors were entered into logistic regression models, a basic and extended model were developed to predict mortality on both dialysis and CC.

Model validation and performance

The four developed models were internally validated with bootstrapping. The shrunken regression coefficients of these final models are given in Table 3. Figure 1 gives an example of how to calculate an individual's mortality probability based on these models. The models' discrimination is shown in Table 4. The optimism-corrected C-statistics of the basic and extended dialysis models were 0.675 and 0.750, respectively. The basic and extended CC models had an optimism-corrected C-statistic of 0.677 and 0.729. Overall, the C-statistics reflected a moderate discriminatory capacity.

The models' calibration slopes, intercepts and calibration-in-the-large are shown in Table 5. The internal validation slopes range from 0.665 to 0.844 and the intercepts from -0.112 to 0.084, indicating a considerable level of overfitting in the apparent models before shrinkage. In Figure 2 the calibration plots are shown after correction for this overfitting. Overall, these showed a moderate to good calibration. The CC models showed a large range of predicted risks, indicating the models' ability to distinguish patients with a low and high absolute risk of mortality.

In Table 6, the probabilities calculated by the developed models are shown for three hypothetical patients. To facilitate comparison of the predicted risk for dialysis versus CC, probability differences (mortality probability on CC minus mortality probability on dialysis) were computed. Probability differences were computed in the whole population of 366 patients and ranged from -33% to 59% (meaning a 33% higher risk of mortality on dialysis compared to CC, and a 59% lower risk of mortality on dialysis, respectively). In Figure 3 this large range of probability differences is visualized in a histogram, stratified by actual treatment choice. In total 35 patients had a probability difference of 0% or smaller, indicating a predicted survival advantage for a CC choice. Of these 35 patients 26 had also chosen CC in reality. A total of 331 patients had a predicted probability difference larger than 0%, indicating a predicted survival advantage on dialysis. In total, 231 patients of these 331 had also chosen dialysis as treatment. For the 100 patients in this group that chose CC this prediction was not known at the time of treatment choice and it is unclear to what extent it would have influenced this choice as many patients chose CC based on an expected lower treatment burden.

Table 3: Final multivariate models after internal validation.

Predictors measured at baseline	Shrunken Regression Coefficients (bootstrap corrected β 's)			
	Basic dialysis model	Extended dialysis model	Basic CC model	Extended CC model
Age (per year)	0.0703	0.0737	0.0142	0.0374
eGFR (per ml/min/1.73m ²)	-0.0049	0.0214	-0.1381	-0.1049
Malignancy present	0.1699	-0.1185	0.5845	0.4742
Diabetes mellitus present	0.2792	0.0470	-0.1984	-0.1753
Cardiovascular disease present	1.4198	-	0.8335	-
Ischemic heart disease	-	0.3588	-	-0.0843
Left ventricular dysfunction	-	1.1720	-	1.2749
Peripheral vascular disease	-	1.0187	-	0.7225
Gender (female)	-	-0.0245	-	-0.1839
Serum albumin (per g/L)	-	-0.0820	-	-0.0927
CRP (per nmol/L)	-	0.0015	-	0.0012
Constant	-7.2953	-4.6099	0.3387	1.5472

Abbreviations: CC: conservative care, eGFR: estimated Glomerular Filtration Rate, CRP: C-reactive protein.

Basic conservative care model
Calculation example
Patient 1: 70 years, eGFR of 10, no malignancy diabetes mellitus, no cardiovascular disease.
Prognostic Index: $0.3387 + 0.0142 * 70 - 0.1381 * 10 + 0.5845 * 0 - 0.1984 * 1 + 0.8335 * 0 = -0.2467$
Probability of death within 2 years: $e^{-0.2467} / (1 + e^{-0.2467}) = 0.4386 = 44\%$

Figure 1: Calculation example.

Table 4: Discrimination of models before and after internal validation.

	Apparent C-statistic	Optimism corrected C-statistic
Basic dialysis model	0.705	0.675
Extended dialysis model	0.790	0.750
Basic CC model	0.719	0.677
Extended CC model	0.797	0.729

Abbreviations: CC: conservative care.

Table 5: Model calibration after internal validation.

	Calibration slope	Calibration intercept	Calibration-in-the-large (observed vs expected)
Basic dialysis model	0.844	-0.084	32.5% vs 32.6%
Extended dialysis model	0.799	-0.112	32.5% vs 32.6%
Basic CC model	0.796	0.052	56.3% vs 56.5%
Extended CC model	0.665	0.068	56.3% vs 56.3%

Abbreviations: CC: conservative care

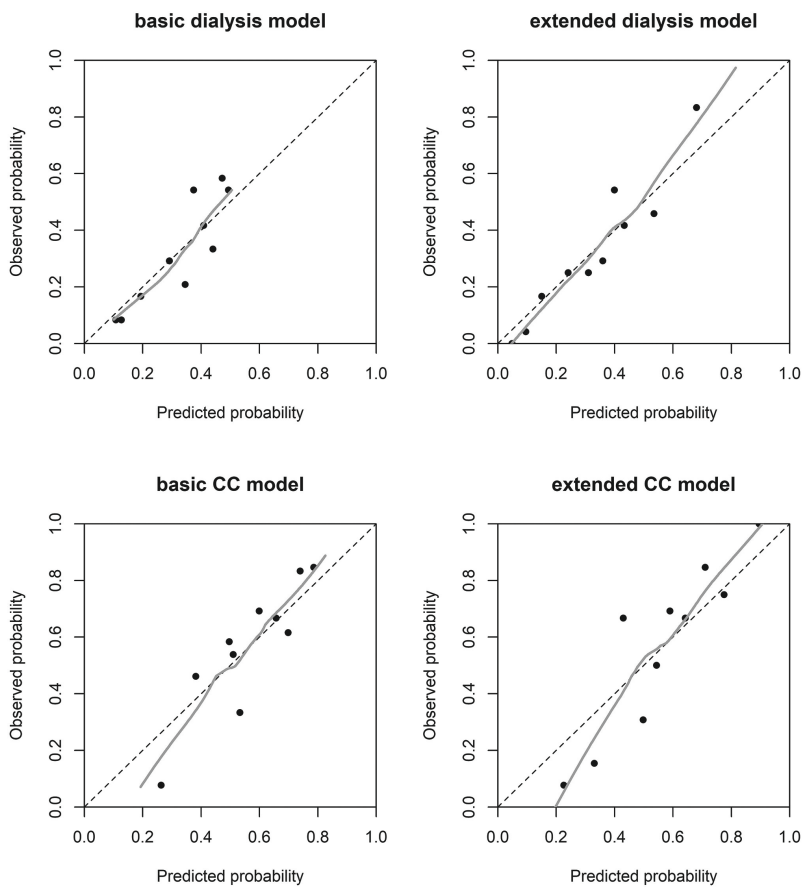


Figure 2: Calibration plots of predicted probability (calculated with shrinkage adjusted prediction models).

Table 6: example patients with corresponding mortality probabilities.

Predictors	Patient 1	Patient 2	Patient 3
Age (per year)	70	80	80
eGFR (per ml/min/1.73m ²)	10	15	20
Malignancy present	No	No	No
Diabetes mellitus present	Yes	No	Yes
Cardiovascular disease present	No	Yes	Yes
Ischemic heart disease	No	No	Yes
Left ventricular dysfunction	No	No	No
Peripheral vascular disease	No	Yes	Yes
Gender	Male	Female	Male
Serum albumin (per g/L)	32	35	40
CRP (nmol/L)	40	29	19
Probability of death within 2 years			
Basic dialysis model	10%	42%	48%
Basic CC model	44%	56%	34%
Probability difference (CC minus dialysis)	34%	14%	-14%
Extended dialysis model	15%	44%	47%
Extended CC model	51%	57%	31%
Probability difference (CC minus dialysis)	36%	13%	-16%

Abbreviations: CC: conservative care, eGFR: estimated Glomerular Filtration Rate, CRP: C-reactive protein.

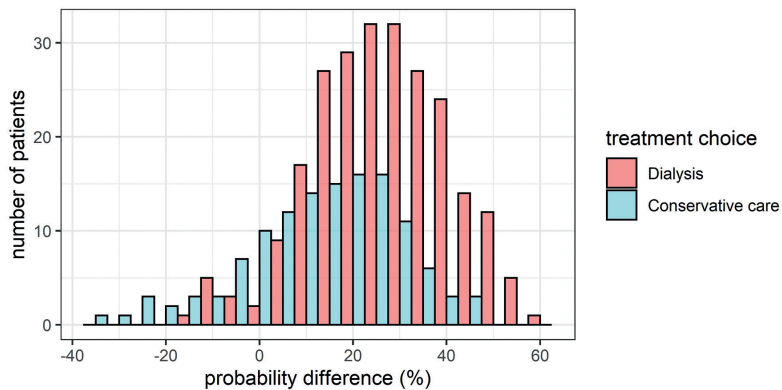


Figure 3: Histogram of probability differences stratified by treatment choice. The difference was calculated by subtracting the mortality probability on dialysis care from the probability on CC. A difference larger than 0% indicates a predicted survival benefit for dialysis choice and smaller than 0% indicates a predicted survival benefit for CC.

Discussion

Four models were developed that predict 2-year mortality for a dialysis and CC treatment pathway in the same patient, and can thereby act as a prediction tool for patients aged 70 years and older with advanced CKD. The performance of the models was moderate to good in terms of discrimination and calibration. However, as this is a small single center patient population, further studies are needed to confirm validity of the developed tools in other populations. After external validation this prediction tool could be used to calculate individually tailored mortality risks; identifying patients who might benefit from dialysis or CC in terms of survival and improving patient discussions surrounding the treatment decision.

To our knowledge this is the first study to predict mortality on dialysis and CC at the time of treatment decision. Though robust prediction models for mortality on dialysis exist, most predict mortality shortly before or after dialysis initiation.¹¹ The often used ‘surprise question’ model was developed on prevalent haemodialysis patients.²⁶ As of now, the European Renal Best Practice Group recommends using the REIN score to improve decision-making surrounding KRT choice.^{27 28} The REIN study developed a score that predicts mortality within 3 months after dialysis initiation in older patients.²⁸ Although these models are relevant for providing dialysis patients with individualized prognosis, they predict after dialysis start meaning the included patients survived up to this time-point. Therefore, as the authors of the REIN score also point out, the transportability of these models to advanced CKD patients who have yet to decide on a treatment strategy is unsure.²⁸ Multiple studies have compared survival in patients treated with dialysis and CC from an etiological perspective and demonstrated a limited survival benefit of a dialysis in patients with higher age and more comorbidities.^{8 14 29} However, no mortality prediction model for patients on CC has previously been developed.

In current treatment decision-making, many older patients feel they lack a choice between dialysis and CC, and in some cases patients are not informed about treatment alternatives to dialysis at all.³⁰⁻³¹ Although surveys show that CKD patients want life-expectancy information, whether good or bad, many patients experience a paucity of prognosis information.³⁰⁻³⁴ Studies show that nephrologists often have difficulty communicating information on prognosis and disease progression to patients and are rarely trained to do so.³²⁻³⁷ A prediction tool can inform discussions surrounding these treatment choices and expected prognoses, bringing clinical practice closer to patients' wants and needs.

The study has a number of limitations. Though it is one of the largest studies including CC patients, the sample size is still quite small for the development of prediction models. A small sample size increases the risk of overfitting, meaning that the models would perform poorer on new patients. We tried to limit overfitting by pre-selecting predictors instead of using data driven selection procedures. Also, bootstrapping was performed as internal validation, this method makes the best use of the available sample size.³⁸ Secondly, the data was collected in a single center which also increases the risk of overfitting. Both these limitations raise doubt on how well the developed models will perform in new patients. Therefore, It is crucial that these models are tested in other patients before use. This external validation should be performed in various centers and other countries to establish the performance in various populations. Another limitation is the fact that patients in the dialysis and CC group are not completely interchangeable. The prediction tool's calculated difference in prognosis may not be entirely due to the treatment choice, but might be due to other differences between the dialysis and CC patient groups. There are many reasons why patients choose dialysis or CC. Some of these reasons may affect prognosis and others may not. We can speculate that personal values and preferences surrounding quality of life and life prolongment would not affect differences in prognosis. However, characteristics such as age and comorbidity can influence both the treatment choice and prognosis. We ensured that such major relevant differences in baseline characteristics were included as predictors and thereby taken into account. Ideally, the current study would be performed on randomized controlled trial data as this would ensure that prognosis differences between dialysis and CC are fully caused by the treatment allocation. However, such a trial comparing CC to dialysis has not been completed thus far. Nonetheless, the individualized predictions in the current study are more accurate than simply giving the average prognosis in all dialysis or CC patients, which is current practice.

The main strength of the study is that it is the first of its kind, and makes use of rare data in which patients' treatment decisions are explicitly documented after the patients have taken part in an established process of shared decision-making and improve usability of our models. The accurate recording of treatment decision timepoint is of great importance as this is the clinically relevant time at which to predict and compare prognoses. By using an intention-to-treat method in which patients were categorised into the dialysis or CC group based on their treatment intention, we follow the clinical practice surrounding

KRT decision-making. Furthermore, the study was performed in line with the newest methodological recommendations concerning prediction model development.¹³

Taking the mentioned limitations into account, we would strongly discourage clinical use until the prediction tool has been externally validated. Even then, the developed models are only meant for patients who are eligible for both dialysis and CC, and are 70 years or older and we cannot be certain that the difference in predicted prognosis on dialysis and CC is solely due to this treatment choice. This prediction tool should never be used to determine treatment eligibility. It is meant to provide more accurate information on mortality to patients who are considering both treatment options, in order to contribute to an informed decision. Further qualitative studies should be performed to investigate how this prognosis information can best be presented to the patient. However, we do believe this study is an important first step towards predicting prognosis for these two possible treatment pathways at a time-point which is relevant to patient and physician.

Finally, as previously mentioned external validation is of great importance before these models are implemented. Testing these models in an external population will ensure accuracy, and allow for updating or recalibration. Not all variables associated with mortality were available in our cohort. Future studies could investigate whether predictors such as frailty, cognition, mobility, dialysis modality or rate of eGFR decline could improve model performance. Future research should also focus on predicting other outcomes such as quality of life, as an expected improved quality of life and more hospital free days are some of the main benefits of CC over dialysis.^{14 39 40}

In conclusion, we have developed and internally validated a prediction tool that provides individualized 2-year mortality risks on CC and dialysis treatment in older patients with advanced CKD. Future studies should test the prediction tool in other patients before use. After external validation, individualized predictions of mortality, combined with expected quality of life and patient preferences, can be of value in shared decision-making when weighing the potential burdens and benefits of dialysis and CC.

References

1. van Walraven C, Manuel DG, Knoll G. Survival trends in ESRD patients compared with the general population in the United States. *American journal of kidney diseases : the official journal of the National Kidney Foundation* 2014;63(3):491-9. doi: 10.1053/j.ajkd.2013.09.011 [published Online First: 2013/11/12]
2. Eckardt KU, Coresh J, Devuyst O, et al. Evolving importance of kidney disease: from subspecialty to global health burden. *Lancet (London, England)* 2013;382(9887):158-69. doi: 10.1016/s0140-6736(13)60439-0 [published Online First: 2013/06/04]
3. Burns A, Carson R. Maximum conservative management: a worthwhile treatment for elderly patients with renal failure who choose not to undergo dialysis. *Journal of palliative medicine* 2007;10(6):1245-7. doi: 10.1089/jpm.2007.0009 [published Online First: 2007/12/22]
4. Verberne WR, Geers AB, Jellema WT, et al. Comparative Survival among Older Adults with Advanced Kidney Disease Managed Conservatively Versus with Dialysis. *Clinical journal of the American Society of Nephrology : CJASN* 2016;11(4):633-40. doi: 10.2215/cjn.07510715 [published Online First: 2016/03/19]
5. Wongrakpanich S, Susantitaphong P, Isaranuwatthai S, et al. Dialysis Therapy and Conservative Management of Advanced Chronic Kidney Disease in the Elderly: A Systematic Review. *Nephron* 2017;137(3):178-89. doi: 10.1159/000477361 [published Online First: 2017/05/26]
6. Ramer SJ, McCall NN, Robinson-Cohen C, et al. Health Outcome Priorities of Older Adults with Advanced CKD and Concordance with Their Nephrology Providers' Perceptions. *Journal of the American Society of Nephrology : JASN* 2018;29(12):2870-78. doi: 10.1681/asn.2018060657 [published Online First: 2018/11/06]
7. Couchoud C, Hemmelgarn B, Kotanko P, et al. Supportive Care: Time to Change Our Prognostic Tools and Their Use in CKD. *Clinical journal of the American Society of Nephrology : CJASN* 2016;11(10):1892-901. doi: 10.2215/cjn.12631115 [published Online First: 2016/08/12]
8. Kurella Tamura M, Desai M, Kapphahn KI, et al. Dialysis versus Medical Management at Different Ages and Levels of Kidney Function in Veterans with Advanced CKD. *Journal of the American Society of Nephrology : JASN* 2018;29(8):2169-77. doi: 10.1681/asn.2017121273 [published Online First: 2018/05/24]
9. Jassal SV, Kelman EE, Watson D. Non-dialysis care: an important component of care for elderly individuals with advanced stages of chronic kidney disease. *Nephron Clinical practice* 2011;119 Suppl 1:c5-9. doi: 10.1159/000328017 [published Online First: 2011/08/17]
10. Yoshino M, Kuhlmann MK, Kotanko P, et al. International differences in dialysis mortality reflect background general population atherosclerotic cardiovascular mortality. *Journal of the American Society of Nephrology : JASN* 2006;17(12):3510-9. doi: 10.1681/asn.2006020156 [published Online First: 2006/11/17]
11. Ramspek CL, Voskamp PW, van Ittersum FJ, et al. Prediction models for the mortality risk in chronic dialysis patients: a systematic review and independent external validation study. *Clinical epidemiology* 2017;9:451-64. doi: 10.2147/cep.S139748 [published Online First: 2017/09/19]
12. Villain C, Fouque D. Choosing end-stage kidney disease treatment with elderly patients: are data available? 2019 doi: 10.1093/ndt/gfy404
13. Collins GS, Reitsma JB, Altman DG, et al. Transparent reporting of a multivariable prediction model for individual prognosis or diagnosis (TRIPOD): the TRIPOD statement. *BMJ (Clinical research ed)* 2015;350:g7594. doi: 10.1136/bmj.g7594 [published Online First: 2015/01/09]
14. Verberne WR, Dijkers J, Kelder JC, et al. Value-based evaluation of dialysis versus conservative care in older patients with advanced chronic kidney disease: a cohort study. *BMC nephrology* 2018;19(1):205. doi: 10.1186/s12882-018-1004-4 [published Online First: 2018/08/18]
15. Floege J, Gillespie IA, Kronenberg F, et al. Development and validation of a predictive mortality risk score from a European hemodialysis cohort. *Kidney Int* 2015;87(5):996-1008. doi: 10.1038/ki.2014.419 [published Online First: 2015/02/05]

16. Holme I, Fellstrom BC, Jardin AG, et al. Prognostic model for total mortality in patients with haemodialysis from the Assessments of Survival and Cardiovascular Events (AURORA) study. *Journal of internal medicine* 2012;271(5):463-71. doi: 10.1111/j.1365-2796.2011.02435.x [published Online First: 2011/08/05]
17. Foote C, Kotwal S, Gallagher M, et al. Survival outcomes of supportive care versus dialysis therapies for elderly patients with end-stage kidney disease: A systematic review and meta-analysis. *Nephrology (Carlton, Vic)* 2016;21(3):241-53. doi: 10.1111/nep.12586 [published Online First: 2015/08/13]
18. Vittinghoff E, McCulloch CE. Relaxing the rule of ten events per variable in logistic and Cox regression. *American journal of epidemiology* 2007;165(6):710-8. doi: 10.1093/aje/kwk052 [published Online First: 2006/12/22]
19. Courvoisier DS, Combesure C, Agoritsas T, et al. Performance of logistic regression modeling: beyond the number of events per variable, the role of data structure. *Journal of clinical epidemiology* 2011;64(9):993-1000. doi: 10.1016/j.jclinepi.2010.11.012 [published Online First: 2011/03/18]
20. de Goeij MC, van Diepen M, Jager KJ, et al. Multiple imputation: dealing with missing data. *Nephrology, dialysis, transplantation : official publication of the European Dialysis and Transplant Association - European Renal Association* 2013;28(10):2415-20. doi: 10.1093/ndt/gft221 [published Online First: 2013/06/05]
21. van Buuren S. Multiple imputation of discrete and continuous data by fully conditional specification. *Statistical methods in medical research* 2007;16(3):219-42. doi: 10.1177/0962280206074463 [published Online First: 2007/07/11]
22. Royston P, Moons KG, Altman DG, et al. Prognosis and prognostic research: Developing a prognostic model. *BMJ (Clinical research ed)* 2009;338:b604. doi: 10.1136/bmj.b604 [published Online First: 2009/04/02]
23. Moons KG, Kengne AP, Woodward M, et al. Risk prediction models: I. Development, internal validation, and assessing the incremental value of a new (bio)marker. *Heart (British Cardiac Society)* 2012;98(9):683-90. doi: 10.1136/heartjnl-2011-301246 [published Online First: 2012/03/09]
24. Rubin DB. Multiple imputation for nonresponse in surveys. New York: Wiley 1987.
25. Austin PC, Steyerberg EW. Graphical assessment of internal and external calibration of logistic regression models by using loess smoothers. *Statistics in medicine* 2014;33(3):517-35. doi: 10.1002/sim.5941 [published Online First: 2013/09/05]
26. Cohen LM, Ruthazer R, Moss AH, et al. Predicting six-month mortality for patients who are on maintenance hemodialysis. *Clinical journal of the American Society of Nephrology : CJASN* 2010;5(1):72-9. doi: 10.2215/cjn.03860609 [published Online First: 2009/12/08]
27. Findlay A, Farrington K, Joosten H, et al. Clinical Practice Guideline on management of older patients with chronic kidney disease stage 3b or higher (eGFR\leq45 mL/min/1.73 m²): a summary document from the European Renal Best Practice Group. *Nephrology Dialysis Transplantation* 2017;32(1):9-16. doi: 10.1093/ndt/gfw411 [published Online First: 2017/01/16]
28. Couchoud CG, Beuscart JB, Aldigier JC, et al. Development of a risk stratification algorithm to improve patient-centered care and decision making for incident elderly patients with end-stage renal disease. *Kidney Int* 2015;88(5):1178-86. doi: 10.1038/ki.2015.245 [published Online First: 2015/09/04]
29. Brown MA, Collett GK, Josland EA, et al. CKD in elderly patients managed without dialysis: survival, symptoms, and quality of life. *Clinical journal of the American Society of Nephrology : CJASN* 2015;10(2):260-8. doi: 10.2215/cjn.03330414 [published Online First: 2015/01/24]
30. Ladin K, Lin N, Hahn E, et al. Engagement in decision-making and patient satisfaction: a qualitative study of older patients' perceptions of dialysis initiation and modality decisions. *Nephrology, dialysis, transplantation : official publication of the European Dialysis and Transplant Association - European Renal Association* 2017;32(8):1394-401. doi: 10.1093/ndt/gfw307 [published Online First: 2016/09/01]
31. Llewellyn H, Low J, Smith G, et al. Narratives of continuity among older people with late stage chronic kidney disease who decline dialysis. *Social science & medicine (1982)* 2014;114:49-56. doi: 10.1016/j.socscimed.2014.05.037 [published Online First: 2014/06/10]

32. Schell JO, Patel UD, Steinhauer KE, et al. Discussions of the kidney disease trajectory by elderly patients and nephrologists: a qualitative study. *American journal of kidney diseases : the official journal of the National Kidney Foundation* 2012;59(4):495-503. doi: 10.1053/j.ajkd.2011.11.023 [published Online First: 2012/01/10]
33. Fine A, Fontaine B, Kraushar MM, et al. Nephrologists should voluntarily divulge survival data to potential dialysis patients: a questionnaire study. *Peritoneal dialysis international : journal of the International Society for Peritoneal Dialysis* 2005;25(3):269-73. [published Online First: 2005/06/29]
34. Singh P, Germain MJ, Cohen L, et al. The elderly patient on dialysis: geriatric considerations. *Nephrology, dialysis, transplantation : official publication of the European Dialysis and Transplant Association - European Renal Association* 2014;29(5):990-6. doi: 10.1093/ndt/gft246 [published Online First: 2013/06/22]
35. Davison SN, Jhangri GS, Holley JL, et al. Nephrologists' reported preparedness for end-of-life decision-making. *Clinical journal of the American Society of Nephrology : CJASN* 2006;1(6):1256-62. doi: 10.2215/cjn.02040606 [published Online First: 2007/08/21]
36. Schell JO, Green JA, Tulsy JA, et al. Communication skills training for dialysis decision-making and end-of-life care in nephrology. *Clinical journal of the American Society of Nephrology : CJASN* 2013;8(4):675-80. doi: 10.2215/cjn.05220512 [published Online First: 2012/11/13]
37. Wachterman MW, Marcantonio ER, Davis RB, et al. Relationship between the prognostic expectations of seriously ill patients undergoing hemodialysis and their nephrologists. *JAMA internal medicine* 2013;173(13):1206-14. doi: 10.1001/jamainternmed.2013.6036 [published Online First: 2013/05/29]
38. Austin PC, Steyerberg EW. Events per variable (EPV) and the relative performance of different strategies for estimating the out-of-sample validity of logistic regression models. *Statistical methods in medical research* 2017;26(2):796-808. doi: 10.1177/0962280214558972 [published Online First: 2014/11/21]
39. Morton RL, Snelling P, Webster AC, et al. Factors influencing patient choice of dialysis versus conservative care to treat end-stage kidney disease. *CMAJ : Canadian Medical Association journal = journal de l'Association medicale canadienne* 2012;184(5):E277-83. doi: 10.1503/cmaj.111355 [published Online First: 2012/02/09]
40. Verberne WR, Das-Gupta Z, Allegretti AS, et al. Development of an International Standard Set of Value-Based Outcome Measures for Patients With Chronic Kidney Disease: A Report of the International Consortium for Health Outcomes Measurement (ICHOM) CKD Working Group. *American journal of kidney diseases : the official journal of the National Kidney Foundation* 2019;73(3):372-84. doi: 10.1053/j.ajkd.2018.10.007 [published Online First: 2018/12/24]

Supplemental Material for Chapter 11

Predictor definitions

Estimated glomerular filtration rate was calculated with the CKD-EPI Creatinine formula. Malignancy was defined as an active malignancy, excluding basal and squamous cell skin cancers. The variable ischemic heart disease was defined as prior myocardial infarction, angina pectoris, ischemic changes on electrocardiograph or coronary intervention in the history. Left ventricular dysfunction of the heart was defined as clinical evidence of pulmonary oedema not caused by errors in fluid balance. Peripheral vascular disease was defined as distal aortic aneurysm, lower extremity vascular disease, cerebrovascular disease, or a history of vascular interventions or surgery.

Expert ranking of candidate predictors

Candidate predictors	Mean rank (3 expert ranks) Dialysis model	Mean rank (3 expert ranks) Conservative model
Cardiovascular disease	2 (2-2-1)	2 (3-2-1)
Age	3 (1-1-7)	3 (1-1-8)
Ischemic heart disease	3 (5-3-2)	4 (6-3-3)
Peripheral vascular disease	4 (3-5-3)	5 (4-5-5)
Malignancy	6 (4-11-4)	6 (5-10-4)
Diabetes mellitus	7 (6-10-6)	9 (7-9-10)
eGFR	7 (7-6-9)	3 (2-6-2)
Left ventricular dysfunction	8 (8-4-11)	7 (8-4-9)
Serum albumin	9 (11-7-8)	10 (11-7-11)
Gender	10 (9-8-12)	10 (9-8-12)
CRP	10 (10-9-10)	10 (10-13-7)
BMI	10 (13-12-6)	10 (13-12-6)
Hypertension	13 (12-13-13)	12 (12-11-12)

After ranking consensus was reached by experts to include the general cardiovascular disease predictor in the basic model and the cardiovascular disease types in the extended model. The top 5 predictors (excluding specific cardiovascular disease types) are included in the basic models and the top 10 predictors (excluding general cardiovascular disease) are included in the extended models.

