



Universiteit
Leiden
The Netherlands

Evolutionary developmental biology of bitterling fish

Yi, W.

Citation

Yi, W. (2022, March 15). *Evolutionary developmental biology of bitterling fish*. Retrieved from <https://hdl.handle.net/1887/3278974>

Version: Publisher's Version

License: [Licence agreement concerning inclusion of doctoral thesis in the Institutional Repository of the University of Leiden](#)

Downloaded from: <https://hdl.handle.net/1887/3278974>

Note: To cite this publication please use the final published version (if applicable).

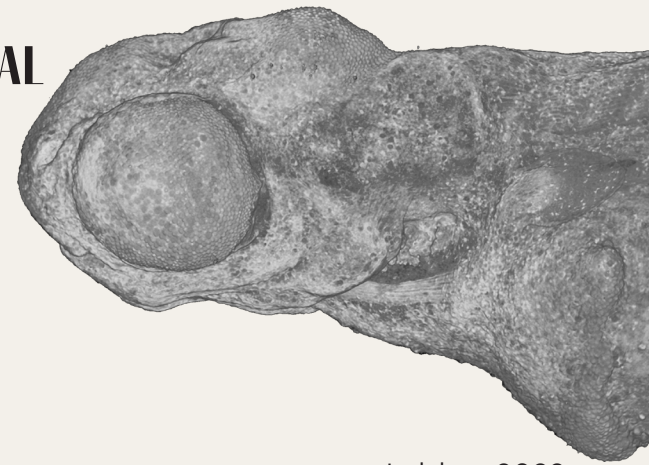


PhD Thesis

Leiden, 2022

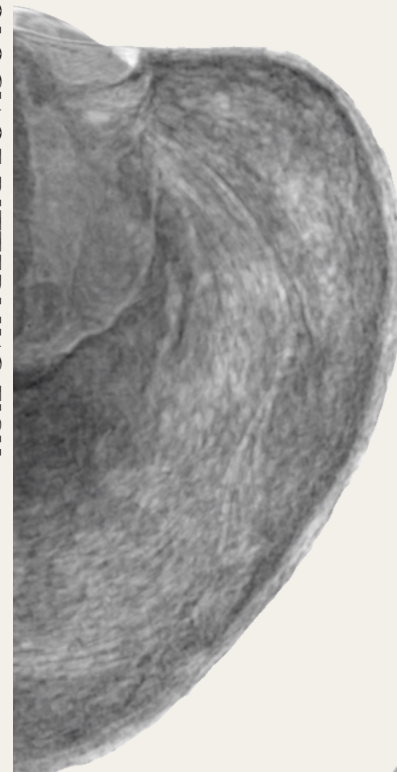
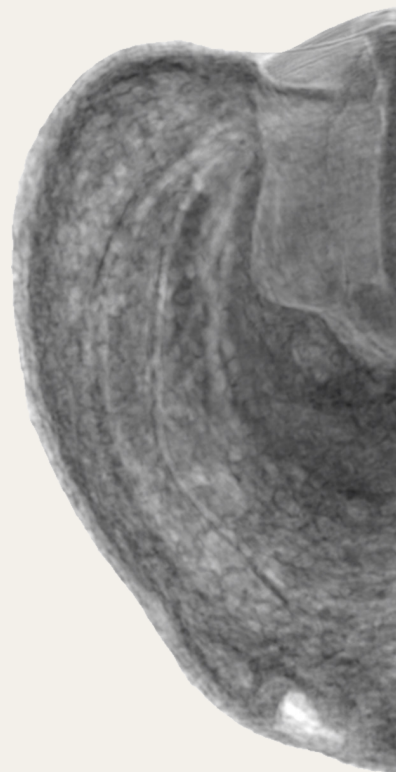
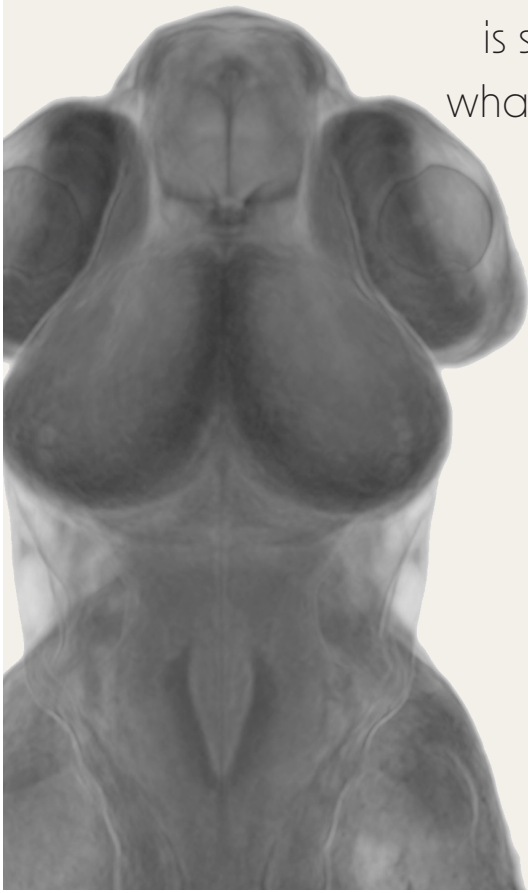
EVOLUTIONARY DEVELOPMENTAL BIOLOGY OF BITTERLING FISH

Wenjing Yi



Leiden, 2022

'M'Intosh and Prince cite various authors in support of the idea that the protoplasm during development is nourished and grows at the expense of the yolk; but surely that fact is sufficiently obvious — what else is the yolk for?'
Cunningham (1891)



Wenjing Yi

