



Universiteit
Leiden
The Netherlands

ALMA observations of doubly deuterated water: inheritance of water from the prestellar environment

Jensen, S.S.; Jørgensen, J.K.; Kristensen, L.E.; Coutens, A.; Dishoeck, E.F. van; Furuya, K.; ... ; Persson, M.V.

Citation

Jensen, S. S., Jørgensen, J. K., Kristensen, L. E., Coutens, A., Dishoeck, E. F. van, Furuya, K., ... Persson, M. V. (2021). ALMA observations of doubly deuterated water: inheritance of water from the prestellar environment. *Astronomy And Astrophysics*, 650, 1-11.
doi:10.1051/0004-6361/202140560


Version: Publisher's Version

License: [Licensed under Article 25fa Copyright Act/Law \(Amendment Taverne\)](#)

Downloaded from: <https://hdl.handle.net/1887/3264078>

Note: To cite this publication please use the final published version (if applicable).

ALMA observations of doubly deuterated water: inheritance of water from the prestellar environment

S. S. Jensen¹ , J. K. Jørgensen¹, L. E. Kristensen¹, A. Coutens^{2,3}, E. F. van Dishoeck^{4,5}, K. Furuya⁶, D. Harsono^{4,7}, and M. V. Persson⁸

¹ Niels Bohr Institute & Centre for Star and Planet Formation, University of Copenhagen, Øster Voldgade 5-7, 1350 Copenhagen K, Denmark

e-mail: sigurd.jensen@nbi.ku.dk

² Laboratoire d'Astrophysique de Bordeaux, Univ. Bordeaux, CNRS, B18N, allée Geoffroy Saint-Hilaire, 33615 Pessac, France

³ Institut de Recherche en Astrophysique et Planétologie, Université de Toulouse, UPS-OMP, CNRS, CNES, 9 Av. du Colonel Roche, 31028 Toulouse Cedex 4, France

⁴ Leiden Observatory, Leiden University, PO Box 9513, 2300 RA Leiden, The Netherlands

⁵ Max-Planck Institute für extraterrestrische Physik (MPE), Giessenbachstrasse, 85748 Garching, Germany

⁶ National Astronomical Observatory of Japan, Osawa 2-21-1, Mitaka, Tokyo 181-8588, Japan

⁷ Institute of Astronomy and Astrophysics, Academia Sinica, No. 1, Sec. 4, Roosevelt Road, Taipei 10617, Taiwan, ROC

⁸ Department of Space, Earth and Environment, Chalmers University of Technology, Onsala Space Observatory, 439 92 Onsala, Sweden

Received 15 February 2021 / Accepted 9 April 2021

ABSTRACT

Context. Establishing the origin of the water D/H ratio in the Solar System is central to our understanding of the chemical trail of water during the star and planet formation process. Recent modeling suggests that comparisons of the D₂O/HDO and HDO/H₂O ratios are a powerful way to trace the chemical evolution of water and, in particular, determine whether the D/H ratio is inherited from the molecular cloud or established locally.

Aims. We seek to determine the D₂O column density and derive the D₂O/HDO ratios in the warm region toward the low-mass Class 0 sources B335 and L483. The results are compared with astrochemical models and previous observations to determine their implications for the chemical evolution of water.

Methods. We present ALMA observations of the D₂O 1_{1,0}–1_{0,1} transition at 316.8 GHz toward B335 and L483 at $\lesssim 0.5$ ($\lesssim 100$ au) resolution, probing the inner warm envelope gas. The column densities of D₂O, HDO, and H₂¹⁸O are determined by synthetic spectrum modeling and direct Gaussian fitting, under the assumption of a single excitation temperature and similar spatial extent for the three water isotopologs.

Results. D₂O is detected toward both sources in the inner warm envelope. The derived D₂O/HDO ratio is $(1.0 \pm 0.2) \times 10^{-2}$ for L483 and $(1.4 \pm 0.1) \times 10^{-2}$ for B335. These values indicate that the D₂O/HDO ratio is higher than the HDO/H₂O ratios by a factor of $\gtrsim 2$ toward both sources.

Conclusions. The high D₂O/HDO ratios are a strong indication of chemical inheritance of water from the prestellar phase down to the inner warm envelope. This implies that the local cloud conditions in the prestellar phase, such as temperatures and timescales, determine the water chemistry at later stages and could provide a source of chemical differentiation in young systems. In addition, the observed D₂O/H₂O ratios support an observed dichotomy in the deuterium fractionation of water toward isolated and clustered protostars, namely, a higher D/H ratio toward isolated sources.

Key words. astrochemistry – stars: formation – ISM: abundances – submillimeter: stars – ISM: individual objects: L483 – ISM: individual objects: B335 (except planetary nebulae)

1. Introduction

Addressing when and how water is synthesized during the formation of stars and planetary systems is essential to our understanding of the delivery of water, and other volatiles, to young planets. Water is a requirement for life as we know it and therefore central for the habitability of planets (e.g., Chyba & Hand 2005). Additionally, water acts as a coolant in molecular gas and is a major constituent of the solid mass reservoirs in protoplanetary disks (e.g., van Dishoeck et al. 2014; Karska et al. 2018).

Water is among the most abundant molecules in the interstellar medium and has been observed at all major stages of star and

planet formation. In prestellar cores, water is a major constituent of the thick ice caps with $X_{\text{ice}} \sim 10^{-4}$ with respect to H₂ (e.g., Whittet et al. 1996; Bergin & Snell 2002; Boogert et al. 2015). In the inner warm envelope toward Class 0 sources, water ice is thermally desorbed, and the derived gas-phase water abundance reaches $X_{\text{gas}} \sim 10^{-7}$ – 10^{-4} (e.g., Ceccarelli et al. 2000; Persson et al. 2016). In outflows, water is sputtered off the grains or synthesized directly in the gas phase, and the abundances can reach $X_{\text{gas}} \sim 10^{-6}$ – 10^{-4} (e.g., Kristensen et al. 2017). Meanwhile, a recent search for water toward nearby Class I sources shows that gas-phase water abundances are low in young disks ($X_{\text{gas}} \lesssim 10^{-6}$), indicating that most of the water remains locked in ice at this stage (Harsono et al. 2020). These observations provide

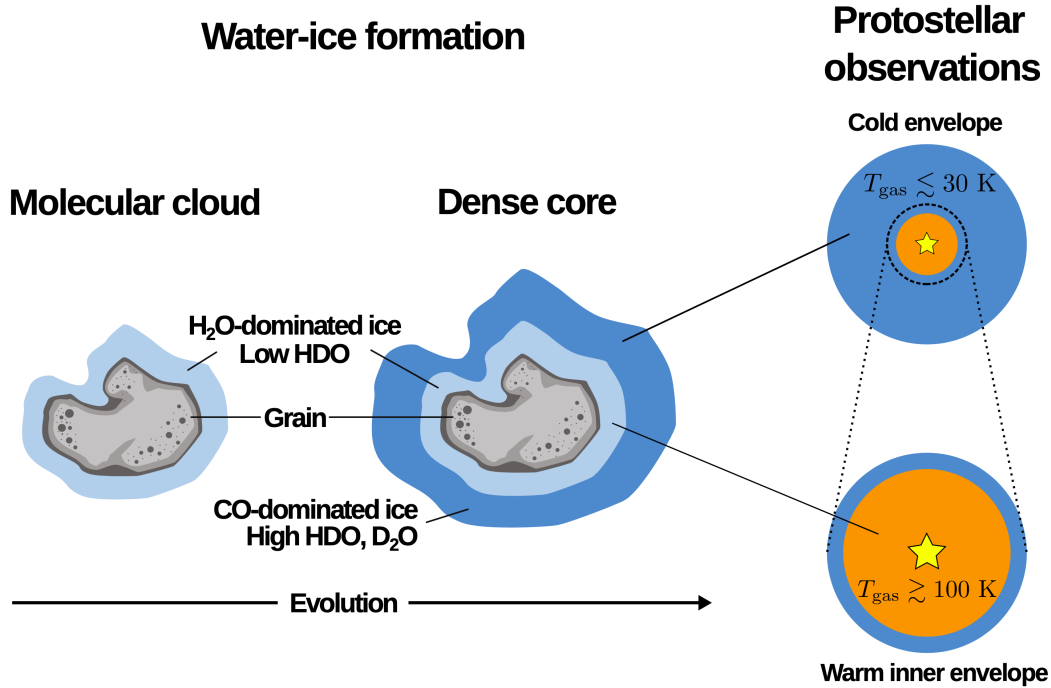


Fig. 1. Schematics of the predicted ice structure in the prestellar core stage (*left*) and the observed water deuterium fractionation toward embedded low-mass protostars (*right*). The outer layer of the ice mantle, which has high water D/H ratio, may stem from nonthermal desorption in the cold envelope or cold gas-phase formation. Meanwhile, the whole mantle is sublimated in the hot corino, lowering the HDO/H₂O ratio. The schematical structure is proposed by [Furuya et al. \(2016\)](#). The figure is adopted from [van Dishoeck et al. \(2021\)](#).

vital constraints on the chemical evolution of water and reveal that water is formed as ice at high abundance in molecular clouds and prestellar cores ([van Dishoeck et al. 2021](#)). This is confirmed by models of the chemical evolution during star formation (e.g., [Taquet et al. 2013b](#); [Furuya et al. 2016](#); [Coutens et al. 2020](#)). However, a central question remains as to what extent is water in protoplanetary disk inherited from the prestellar cloud or synthesized locally in the disk (e.g., [Visser et al. 2009](#); [Cleeves et al. 2014](#)). If prestellar inheritance is the dominant source of water in the protoplanetary disk, then the water chemistry is set by the conditions in the local cloud environment (e.g., the temperature, radiation field, and duration). This could promote some chemical differentiation in planetary systems. Conversely, if local processing in the disk is significant, then local conditions in the disk may strongly influence the chemistry of water and other volatiles.

By studying the deuterium fractionation of water, we can determine how the physical conditions affect the water chemistry and track the chemical evolution during star and planet formation (e.g., [Ceccarelli et al. 2014](#)). Deuterium fractionation occurs as a consequence of several chemical processes that depend sensitively on the temperature, density, visual extinction, and ionization sources ([Caselli et al. 2012](#)). At low temperatures ($\lesssim 50$ K), the prominent pathway is the gas-phase exchange reaction $\text{H}_3^+ + \text{HD} \rightleftharpoons \text{H}_2\text{D}^+ + \text{H}_2 + \Delta E$, where ΔE depends on the spin state of the involved reactants. This forward reaction is endothermic, and the backward reaction is inhibited at low temperatures, thereby leading to an enrichment of H₂D⁺ relative to H₃⁺. H₂D⁺ (and D₂H⁺, D₃⁺) dissociatively recombines with free electrons to form atomic D, thus increasing the local atomic D/H ratio in the gas phase and ultimately on dust grain surfaces where water and other molecules are formed through hydrogenation ([Tielens 1983](#); [Roberts et al. 2003](#)). Detections of gas phase H₂D⁺ confirm that this enrichment is occurring in the gas phase in prestellar cores ([Caselli et al. 2003](#); [Vastel et al. 2004](#)).

Observations of HDO and H₂¹⁸O toward Class 0 source show that the degree of deuterium fractionation varies on different spatial scales (e.g., [Persson et al. 2014](#)). Single-dish observations, some of which may arise in the cold extended envelope, reveal high D/H ratios of water; HDO/H₂O ratios range from 10⁻³ to 10⁻² ([Stark et al. 2004](#); [Parise et al. 2005](#); [Coutens et al. 2012](#)). Meanwhile, interferometric observations targeting the inner warm region have found much lower water deuteration; in these observations HDO/H₂O ratios range from 10⁻⁴–10⁻³ ([Jørgensen & van Dishoeck 2010](#); [Taquet et al. 2013a](#); [Persson et al. 2014](#); [Jensen et al. 2019](#)). The first detection of interstellar D₂O was presented by [Butner et al. \(2007\)](#), who derived a D₂O/HDO ratio of 1.7×10^{-3} toward IRAS 16293-2422 based on single-dish observations. In a later work, [Coutens et al. \(2012\)](#) found a higher D₂O/HDO ratio of ~ 0.06 toward the same source using *Herschel* HIFI data. Interferometric detections of D₂O on inner envelope scales prior to this work are limited to [Coutens et al. \(2014\)](#), who found a high D₂O/HDO ratio of $\sim 1\%$ and D₂O/H₂O $\sim 2 \times 10^{-5}$ toward NGC 1333 IRAS 2A. The current observational understanding is outlined in Fig. 1.

The observed difference in D/H ratios on different spatial scales can be understood as a result of the chronological evolution of water chemistry during star formation ([Dartois et al. 2003](#); [Taquet et al. 2013b](#); [Furuya et al. 2016](#)). Before cloud collapse, water ice is formed in the molecular cloud with a lower deuterium fraction, as a result of higher temperatures and moderate extinction in this phase ($T \sim 20$ K, $A_v \lesssim 5$ mag). Later, as the cloud core cools and contracts, the extinction increases and CO is depleted (e.g., [Caselli et al. 1999](#)). During this phase, the deuterium fractionation becomes highly efficient, and a second generation of highly deuterated water ice is formed. This chronology leads to two distinct components in the interstellar ice: the bulk ice mantle consists of a water-rich ice with lower D/H ratio, and the surface consists of a mix of highly deuterated

Table 1. Observation log.

Source	Date	Phase calibrator	Bandpass calibrator	Max. baseline (m)	n_{antennas}	v_{LSR} (km s ⁻¹)
L483	2019 October 29	J1743–0350	J1924–2914	697	42	4.5
B335	2019 October 8	J1938+0448	J1924–2914	784	42	8.3

water, CO, and complex organics (see Fig. 1). This scenario can explain the observed deuterium fractionations: on larger spatial scales, the bulk water reservoir remains in the solid phase, and the observed gas phase primarily consists of water with a high D/H ratio. This gas-phase water is either photo-desorbed from the ice surface layers or formed directly in the gas phase at low temperature and high extinction, that is, with a high D/H ratio (Taquet et al. 2013b; Furuya et al. 2016). Meanwhile, in the inner warm gas, where the ice is entirely sublimated, the gas-phase HDO/H₂O ratio of water is lowered, since the ice reservoir with a lower D/H ratio is released from the dust grains. The similarity between D₂O/HDO ratios on larger and smaller scales support this scenario; the abundance of deuterated water isotopologs is low in the bulk water ice, and consequently the ratio is largely unaffected by the sublimation of the bulk water ice.

A consequence of the above scenario for water formation is that the D/H ratio of water could depend on the physical conditions in the molecular cloud and prestellar core prior to and during the protostellar collapse. Lower temperatures or a longer duration of the deeply embedded phase would increase the D/H ratio observed in the inner warm region. Conversely, a faster collapse or warmer gas temperature could lower the D/H ratio in the inner warm region. This would imply a relation between the bulk water D/H ratio and the dynamics of the formation environment. Isolated protostars may collapse more slowly than clustered counterparts because the stability of the cloud is determined solely by the internal cloud structure (Ward-Thompson et al. 2007; Enoch et al. 2008). Moreover, the temperature in clustered regions could be higher owing to, for instance, more external radiation or shock heating (Krumholz 2014; Hocuk et al. 2017). Either of these scenarios would enhance the D/H ratio toward isolated protostars in contrast to clustered protostars, in which external factors can influence the physical conditions. Such a differentiation was recently suggested based on ALMA observations of HDO and H₂¹⁸O in the warm inner envelope toward three isolated protostars (Jensen et al. 2019). If the enhanced HDO/H₂O ratio is a consequence of environmental effects, then the same might also apply to D₂O.

In this work, we present the first ALMA detections of D₂O in the inner warm region toward the isolated low-mass Class 0 protostars B335 and L483. We combine the D₂O detections with previous detections of HDO and H₂¹⁸O toward the sources to derive D₂O/HDO, D₂O/H₂O and HDO/H₂O ratios consistently. This work aims to constrain the chemical evolution of water between the molecular cloud and the inner warm envelope toward Class 0 sources. Furthermore, accurate determination of the D/H ratio in the warm envelope allow for comparison between the deuterium fractionation in protoplanetary disk and warm envelopes toward Class 0 sources, thereby establishing a possible link between these regimes.

The paper is organized as follows. In Sect. 2, the observations and data reduction are presented. The data analysis is presented in Sect. 3, and the results are discussed in Sect. 4. Throughout the paper we refer to NGC 1333 IRAS 2A as IRAS 2A. We denote HDO/H₂O as f_{D1} and D₂O/HDO as f_{D2} , and use both

terms interchangeably. Furthermore, we refer to the inner warm gas component, where $r \lesssim 100$ au and $T \gtrsim 100$ K, as the warm envelope.

2. Observations

The low-mass protostars B335 and L483 were observed with ALMA during Cycle 7 (PI: Sigurd S. Jensen, projectid: 2019.1.00720.S). Information on the observation dates and calibration sources can be found in Table 1. In the present analysis, we also utilize additional spectral windows from the data presented in Jensen et al. (2019) toward both sources; this latter work gives a detailed description of those observations.

The spectral setup targeted the D₂O 1_{1,0}–1_{0,1} transition at 316.8119 GHz in the ALMA band 7. The imaged spectral windows contain 1920 channels with a width of 122 kHz (0.11 km s⁻¹). The observed phase centers are $\alpha_{\text{J2000}} : 19:37:00.89$, $\delta_{\text{J2000}} : +07:34:09.5$ for B335, and $\alpha_{\text{J2000}} : 18:17:29.91$, $\delta_{\text{J2000}} : -04:39:39.6$ for L483. The source velocities applied to the spectral tunings are listed in Table 1.

Each dataset was pipeline-calibrated using CASA 5.6 (McMullin et al. 2007). Subsequent phase self-calibration was attempted for each dataset with CASA 5.6. For B335, self-calibration was successful with an improved signal-to-noise ratio (S/N) of ~25%; however, for L483, no improvement in S/N level was achieved, and therefore the ALMA pipeline product was preferred.

Imaging was performed with the TCLEAN algorithm with a robust parameter of 0.5. Toward each source, a continuum image at 302 GHz was created and compared with previous ALMA observations toward the sources. The intensities and morphologies of the continuum images are consistent with previous interferometric observations of the sources (e.g., Imai et al. 2016, 2019; Oya et al. 2017; Jacobsen et al. 2019). The final continuum images are shown in Fig. 2. The synthesized beam size in spectral window centered on the D₂O transition are 0'.38 × 0'.37 and 0'.56 × 0'.46 for B335 and L483, respectively.

Continuum subtraction for each spectral window was performed using the sigma-clipping method with the STATCONT code presented in detail in Sánchez-Monge et al. (2018). We preferred to use this method because both sources display rich hot corino emission, which made continuum subtraction through the UVCNTSUB routine in CASA challenging (see, e.g., Jørgensen et al. 2016). For the line analysis, we extracted the spectrum from a single pixel toward the continuum peak position for each source.

The emission lines presented in this work are identified using data from the Jet Propulsion Laboratory (JPL, Pickett et al. 1998) and the Cologne Database for Molecular Spectroscopy (CDMS, Müller et al. 2001). The spectroscopic data used to identify D₂O, HDO, H₂¹⁸O are from Brünken et al. (2007), Messer et al. (1984), and de Lucia et al. (1972), respectively. Furthermore, spectroscopic data for CH₃OCH₃, and CH₃OD are from Endres et al. (2009) and Anderson et al. (1993), respectively. For CH₃OD, the exact partition function is unknown, and the current analysis

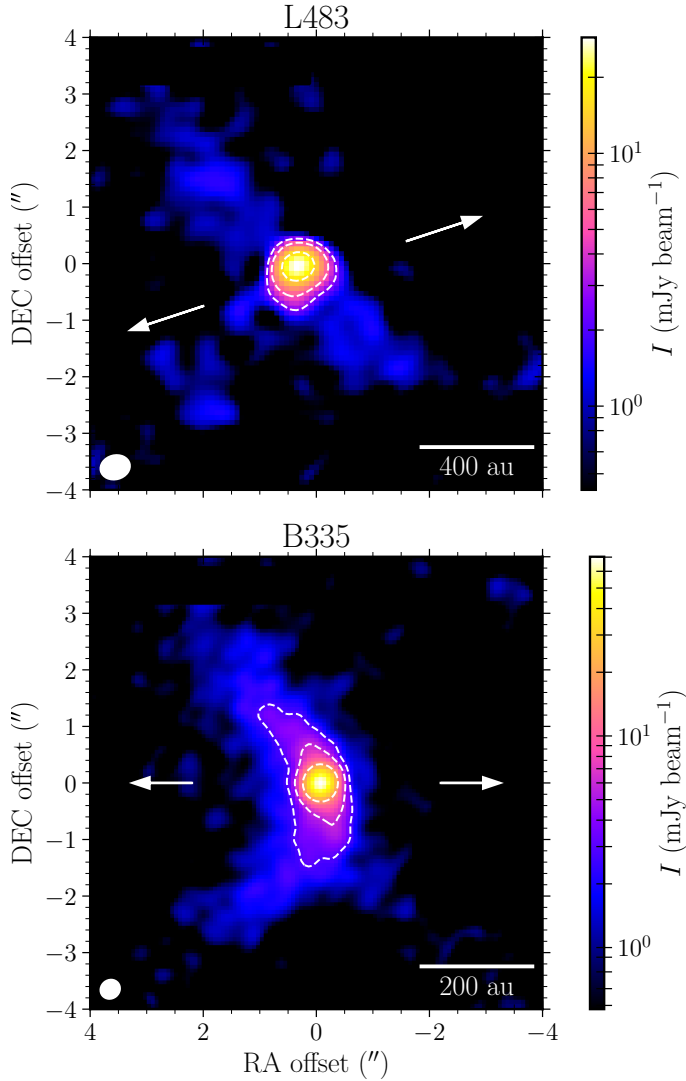


Fig. 2. Continuum emission at 301.7 GHz toward L483 and B335. The map shows emission above $1\sigma_{\text{rms}}$ with white contours at $5\sigma_{\text{rms}}$, $10\sigma_{\text{rms}}$, and $30\sigma_{\text{rms}}$. Linear scales are indicated in the lower right corner, assuming a distance of 100 pc to B335 and 200 pc to L483 (see Jensen et al. 2019, and references therein). The gray arrows indicate the direction of outflows that may be perturbing the dust distribution. The synthesized beam size is shown in the lower left corner.

relies on a partition function scaled from the $\text{CH}_3^{18}\text{OH}$ partition function, similar to Jørgensen et al. (2018). All querying was done through the Splatalogue interface¹. Throughout this work, the H_2O column density is estimated from H_2^{18}O by adopting a $^{16}\text{O}/^{18}\text{O}$ ratio of 560 (Wilson & Rood 1994).

3. Results

The D_2O lines were detected toward both sources as part of a broad emission feature. The emission feature was identified as D_2O blended with two CH_3OD transitions and, potentially, one CH_3OCH_3 transition. This identification is consistent with the observed feature toward IRAS 2A (Coutens et al. 2014). As the line is heavily blended, estimation of the column density is challenging, and two complementary methods were employed. The

spatial extent of the D_2O and CH_3OD emission is confined to the inner envelope, as shown in Fig. 3.

3.1. Synthetic spectrum modeling

The first method for the estimation of the D_2O column density relies on a synthetic spectrum of the sources. Combining the ALMA data from Jensen et al. (2019) with those presented in this work, spectral coverage extends to several spectral windows in ALMA bands 5, 6, and 7. For B335, two unblended transitions of CH_3OD and four unblended transitions of CH_3OCH_3 were identified. For L483, three unblended transitions of CH_3OD and three unblended transitions of CH_3OCH_3 were identified. This allowed for accurate modeling of the blended emission feature around the D_2O line (i.e., the combined emission from D_2O , CH_3OD , and CH_3OCH_3). The best fit was determined by χ^2 minimization of the data around emission lines. Blended lines and transitions with high optical thickness were manually excluded from the χ^2 estimation. The synthetic spectrum was calculated following the methodology presented in Möller et al. (2017) with the addition of an optical depth correction from Goldsmith & Langer (1999). Toward B335, the observed spectrum was best reproduced by a synthetic model with $N(\text{D}_2\text{O}) = 3.5 \times 10^{15} \text{ cm}^{-2}$, $N(\text{CH}_3\text{OD}) = 2.5 \times 10^{17} \text{ cm}^{-2}$, and $N(\text{CH}_3\text{OCH}_3) = 1.3 \times 10^{17} \text{ cm}^{-2}$. For the water isotopologs, the synthetic spectrum model yields $\text{HDO}/\text{H}_2\text{O} = (6.3 \pm 1.5) \times 10^{-3}$ and $\text{D}_2\text{O}/\text{HDO} = (1.4 \pm 0.1) \times 10^{-2}$ for B335.

For L483, the synthetic spectrum modeling yields column densities of $N(\text{D}_2\text{O}) = 1.1 \times 10^{15} \text{ cm}^{-2}$, $N(\text{CH}_3\text{OD}) = 1.7 \times 10^{17} \text{ cm}^{-2}$, and $N(\text{CH}_3\text{OCH}_3) = 7.9 \times 10^{16} \text{ cm}^{-2}$. The D/H ratios toward this source are then $\text{HDO}/\text{H}_2\text{O} = (4.0 \pm 0.5) \times 10^{-3}$ and $\text{D}_2\text{O}/\text{HDO} = (1.0 \pm 0.2) \times 10^{-2}$. The synthetic spectra are presented in the left panels of Figs. 4 and 5. For L483, the best-fit spectral model shows some deviation from the observed profile, however, the D_2O column density is robust: changing the parameters of the CH_3OD and CH_3OCH_3 components has little impact on the D_2O abundance. We note that for L483, many emission lines are double-peaked Gaussians (see, e.g., Oya et al. 2017; Jacobsen et al. 2019). The parameters for the best-fit synthetic spectrum are presented in Table 2, for B335 and L483. The full spectral models for both sources are shown in Appendix A.

3.2. Least-squares fitting

In the second, complimentary method, the line profiles were fitted using the least-squares method with the SCIPY routine CURVE_FIT. Toward B335, the fit was allowed to include up to four Gaussian line profiles, one for each potential transition in the blended emission feature. Bounds on the fits were estimated from the HDO data, and other non-blended emission lines in the dataset. The best fit does not include a fourth component, corresponding to either the CH_3OCH_3 line at 316.7904 GHz or the CH_3OD transition at 316.7916 GHz (i.e., only three Gaussian profiles were included in the final fit). The exclusion of a fourth component has limited impact on the Gaussian profile for D_2O . The resulting fit is shown the right panel of Fig. 4. The column density is estimated from the fitted line profile by assuming local thermodynamic equilibrium (LTE) (Mangum & Shirley 2015). We adopted an excitation temperature of 220 K, which is derived from the synthetic spectrum; this method results in a D_2O column density of $4.0 \times 10^{15} \text{ cm}^{-2}$. The HDO transitions presented in Jensen et al. (2019) give a HDO column density of $1.9 \times 10^{17} \text{ cm}^{-2}$ at the same excitation temperature, when a beam filling factor is applied for a source size of $0''.2$. This method then

¹ <https://splatalogue.online>

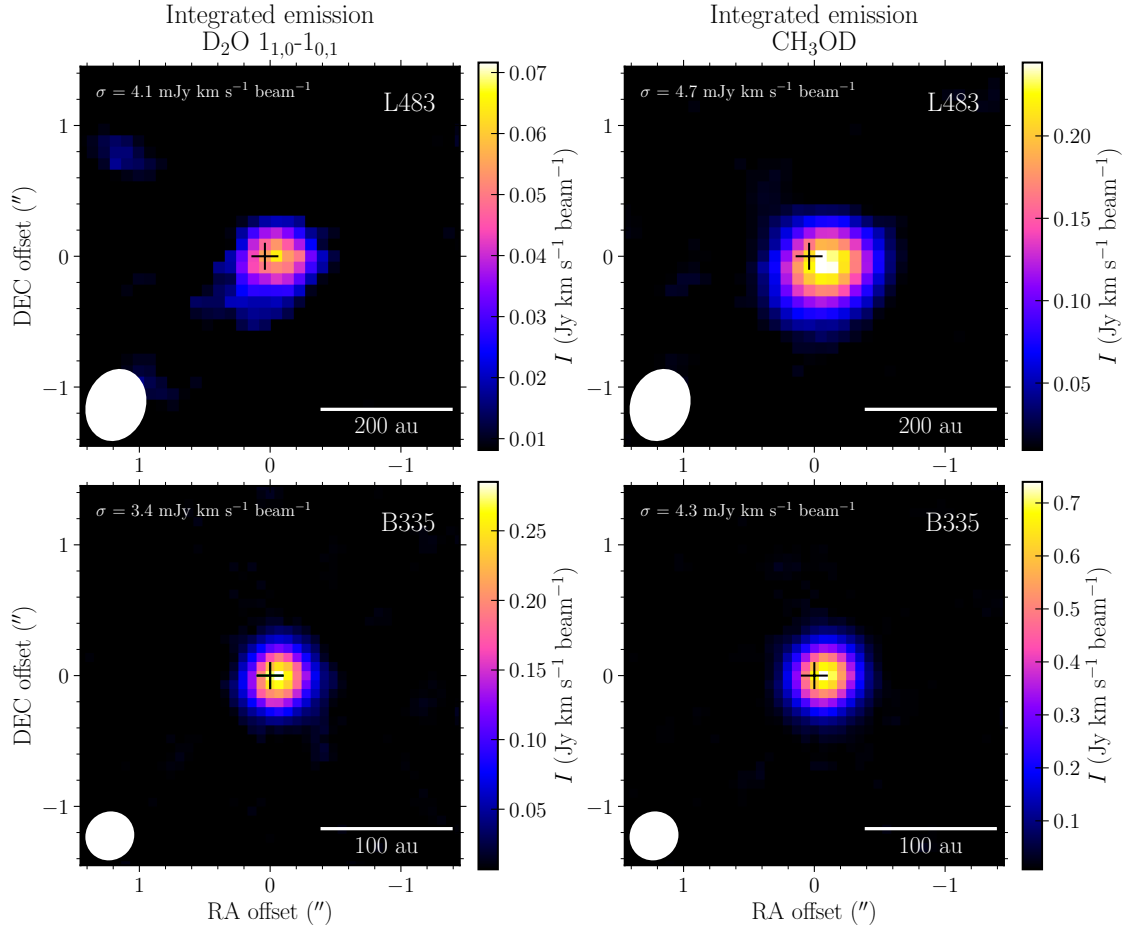


Fig. 3. Moment 0 maps of the D_2O and CH_3OD emission, excluding channels where the emission is blended. Maps show emission above 3σ , where $\sigma = \sigma_{\text{rms}} \times N_{\text{channels}}^{0.5} \times dv$; dv is the channel width and N is the number of collapsed channels. The black cross indicates the continuum peak position.

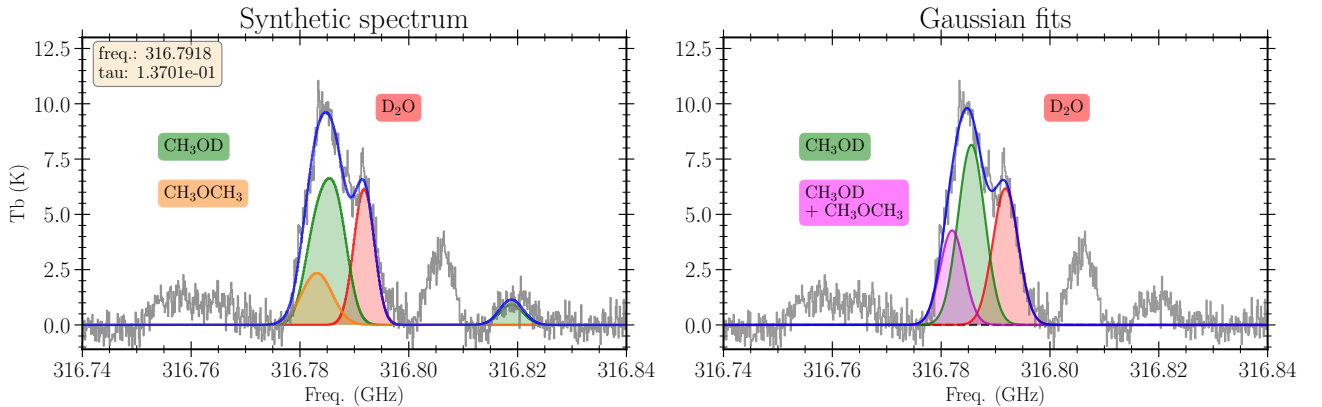


Fig. 4. Overview of the two methods used to determine the column density of D_2O toward B335. *Left*: Synthetic spectrum model for the emission feature toward B335 for an assumed source size of $0''.2$. The estimated optical depth τ for D_2O is shown in the upper left corner. The synthetic spectrum includes components from D_2O , CH_3OD , and CH_3OCH_3 . *Right*: Least-squares fit to the emission profile. The best fit includes three Gaussian components, one identified as D_2O , one identified as CH_3OD at 316.7651 GHz, and a third component that may be either CH_3OD at 316.7916 GHz or CH_3OCH_3 at 316.7904 GHz, or a convolution of both.

results in a $\text{D}_2\text{O}/\text{HDO}$ ratio of $(2.1 \pm 0.6) \times 10^{-2}$. Evidently, the $\text{D}_2\text{O}/\text{HDO}$ ratios toward B335 are somewhat higher when using the Gaussian fits, however both methods yield high $\text{D}_2\text{O}/\text{HDO}$ ratios $\gtrsim 10^{-2}$. We note that the HDO column density is different from that presented in Jensen et al. (2019) because a higher excitation temperature of 220 K and a smaller source size are used in this work. Furthermore, the synthetic model includes an

optical depth correction and identifies a slight blending of the H_2^{18}O line, increasing the $\text{HDO}/\text{H}_2\text{O}$ ratio. Because of this, we consider the column densities presented in this work as more accurate. However, this does not impact the results and discussions of the relative $\text{HDO}/\text{H}_2\text{O}$ abundances in Jensen et al. (2019), in which identical excitation temperatures were used for all sources. The differences in the reported $\text{HDO}/\text{H}_2\text{O}$ ratios in

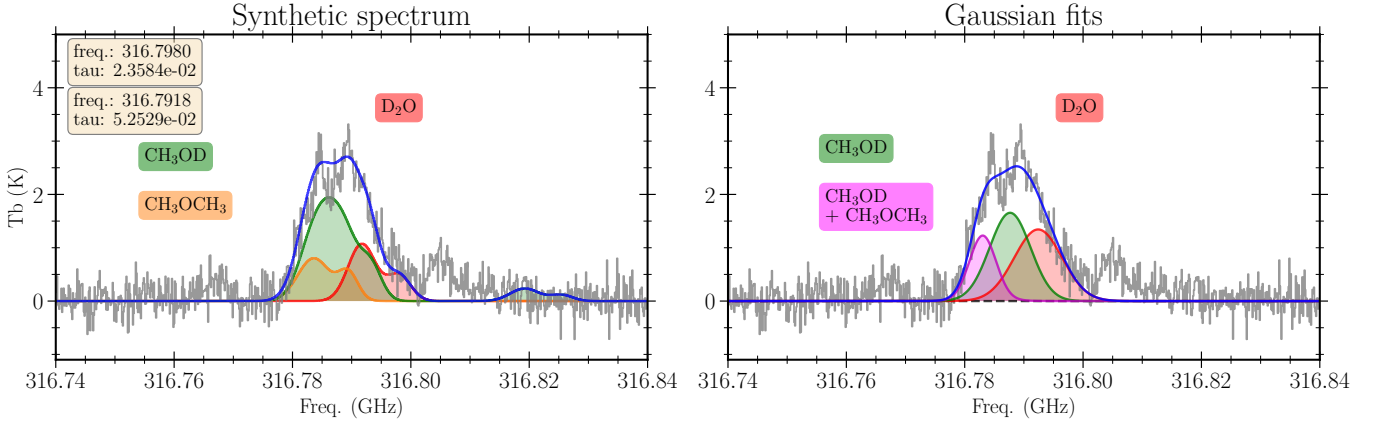


Fig. 5. Overview of the two methods used to determine the column density of D_2O toward L483. *Left:* Synthetic spectrum model for the emission feature toward L483 for an assumed source size of $0''.2$. All molecules are fitted with double Gaussians. The estimated optical depth τ for both D_2O profiles are shown in the upper left corner. The synthetic spectrum includes components from D_2O , CH_3OD , and CH_3OCH_3 . *Right:* Least-squares fit to the emission profile. The best fit includes three components, one identified as D_2O , one identified as CH_3OD at 316.7651 GHz, and a third component that may be either CH_3OD at 316.7916 GHz or CH_3OCH_3 at 316.7904 GHz, or a convolution of both.

Table 2. Overview of the column densities for D_2O , HDO , and $H_2^{18}O$ derived with the best-fit synthetic spectrum model (N_{model}) and with the fitted Gaussian profiles (N_{fit}).

Molecule	N_{model} (cm^{-2})	N_{fit} (cm^{-2})	FWHM (km s^{-1})	v_{LSR} (km s^{-1})	T_{ex} (K)
<i>L483</i>					
D_2O	1.1×10^{15}	1.7×10^{15}	(4.5, 5.2)	(1.75, 7.65)	165
HDO	1.1×10^{17}	1.2×10^{17}	(4.9, 5.7)	(1.75, 7.65)	165
$H_2^{18}O$	5.1×10^{16}	5.9×10^{16}	(6.2, 7.1)	(1.75, 7.65)	165
<i>B335</i>					
D_2O	3.5×10^{15}	4.0×10^{15}	4.25	7.6	220
HDO	2.5×10^{17}	1.9×10^{17}	4.0	7.9	220
$H_2^{18}O$	6.3×10^{16}	7.1×10^{16}	5.65	7.9	220

Notes. The reported full width at half maximum (FWHM) and v_{LSR} are for the synthetic spectrum model. A source size of $0''.2$ is assumed for both sources for all molecules.

this work and in Jensen et al. (2019) illustrate the dependence on the methodology and assumptions, however, the observed dichotomy between isolated and clustered protostars reported in that paper is robust. To remove the observed dichotomy requires consistently adopting lower excitation temperatures for the isolated sources, independent of the luminosity of the respective sources.

In the case of L483, the emission lines are generally double-peaked Gaussian profiles (Jensen et al. 2019). These features are more challenging to fit when strongly blended and attempts to fit double-peaked Gaussians to all four potential emission lines did not produce good results. Instead, single Gaussians were fitted to each transition, which provided reasonable fits (as shown in the right panel of Fig. 5). The fitted Gaussian profiles result in $N(D_2O) = 1.7 \times 10^{15} \text{ cm}^{-2}$, which, combined with $N(HDO) = 1.2 \times 10^{17} \text{ cm}^{-2}$, yield $D_2O/HDO = (1.4 \pm 0.4) \times 10^{-2}$. Again, this method returns a higher D_2O/HDO than the synthetic spectrum model. For L483, an excitation temperature of 165 K was used, which was derived from the synthetic spectrum model. Overall, both methods agree, given the inherent flux density uncertainty of ALMA ($\sim 10\%$) and the uncertainties in the fitting ($\sim 10\%$).

Both methods assume that water emission from the warm envelope is in LTE. Previous studies of water isotopologs with

interferometers have assessed the validity of this approach. Persson et al. (2014) compare the optically thin LTE approximation to radiative transfer models for two Class 0 sources and find agreement between the two methods. Coutens et al. (2014) compare non-LTE RADEX calculations and LTE calculations for the same HDO transitions presented in this work and found that the LTE approach is valid for these transitions. Generally, the LTE approach is suitable for water emission in the inner envelope, where the densities are similar or higher than the critical densities for the targeted transitions.

4. Discussion

The observed sources show high abundances of doubly deuterated water, D_2O , with $D_2O/HDO \gtrsim 10^{-2}$ and $D_2O/HDO > HDO/H_2O$ for both sources. The derived f_{D_2}/f_{D_1} ratios for L483 and B335 are ~ 2.5 and ~ 2 , respectively. This is similar to the previous determination of D_2O/HDO in the warm envelope toward IRAS 2A presented in Coutens et al. (2014), who reported $D_2O/HDO \gtrsim 10^{-2}$ and $f_{D_2}/f_{D_1} \gtrsim 7$. Table 3 presents an overview of the HDO/H_2O and D_2O/HDO ratios toward low-mass Class 0 sources, limited to data which are determined with interferometric observations of the warm envelope. The high D_2O abundances reported in this work has several implications for the

Table 3. Overview of the D/H ratios of water in the warm region ($\lesssim 100$ au, $T \gtrsim 100$ K) toward Class 0 protostars.

Object	HDO/H ₂ O ($\times 10^{-4}$)	D ₂ O/HDO ($\times 10^{-2}$)	f_{D2}/f_{D1}	Reference
<i>Clustered protostars</i>				
NGC 1333 IRAS 2A	7.4 ± 2.1	1
–	17 ± 8	1.2 ± 0.5	7 ± 4	2
NGC 1333 IRAS 4A-NW	5.4 ± 1.5	1,3
NGC 1333 IRAS 4B	5.9 ± 2.6	1
IRAS 16293–2422	9.2 ± 2.6	1
<i>Isolated protostars</i>				
BHR71–IRS1	18 ± 4	3
B335	17 ± 3	3
–	63 ± 15	1.4 ± 0.1	2.2 ± 0.5	4
L483	22 ± 4	3
–	40 ± 5	1.0 ± 0.2	2.5 ± 0.3	4

Notes. For L483 and B335, the reported values are derived from the synthetic spectrum model. The table only include interferometric observations of the inner warm region toward low-mass Class 0 protostars.

References. (1) Persson et al. (2014); (2) Coutens et al. (2014); (3) Jensen et al. (2019); (4) This work.

inheritance of water and the tentative correlation between protostellar environment and D/H ratio in water, which is discussed below.

4.1. Inheritance of water D/H ratio

The D/H ratio of water is an essential tool for determining the chemical evolution of water during star and planet formation. Deuterium fractionation of water can proceed through multiple pathways during the evolutionary stages of star and planet formation with varying efficiency (e.g., Caselli et al. 2012; van Dishoeck et al. 2014). In a recent work, Furuya et al. (2017) studied the evolution of the water D/H ratio during the star formation process from cloud to disk for hundreds of tracer particles in a 2D axisymmetric model, including both the protostellar collapse and the protoplanetary disk phases. These authors showed that water formation with HDO/H₂O ratios in the range 10^{-4} – 10^{-3} can occur both through prestellar inheritance and in situ water formation in the cold midplane of the protoplanetary disk. Hence, distinguishing between inheritance and in situ formation based solely on the HDO/H₂O ratio is challenging. Meanwhile, models suggest that the formation of D₂O is inefficient in protoplanetary disks when compared to the prestellar core phase. Therefore, Furuya et al. (2017) suggest that the ratio of f_{D2}/f_{D1} is a more robust tracer of chemical inheritance for water. Quantitatively, the model of Furuya et al. (2017) shows that a f_{D2}/f_{D1} ratio around ~ 10 is formed in the prestellar phase, while a much lower ratio of $f_{D2}/f_{D1} \sim 0.1$ is found for water formed within the protoplanetary disk.

For L483 and B335, the observed f_{D2}/f_{D1} ratios are $\gtrsim 2$. Prior to this work, f_{D2}/f_{D1} was determined in the hot corino toward IRAS 2A, where the ratio is $\gtrsim 7$. The observed ratios, $f_{D2}/f_{D1} > 1$, suggest that water in the warm envelope is predominantly inherited from the prestellar phase and has not undergone reprocessing during accretion from the cloud to the warm envelope toward these sources.

Recently, Jensen et al. (2021) studied the D/H ratio of water during the formation of several low-mass protostars in a dynamic 3D magnetohydrodynamics simulation of a molecular cloud region. For each protostar, thousands of tracer particles recorded the physical evolution during the accretion process from the

large-scale environment down to the warm envelope. The temperature structure of the envelopes was calculated using the Monte Carlo radiative transfer code RADMC-3D (Dullemond et al. 2012). Subsequently, the chemical evolution along each particle trajectory was modeled to determine the gas-phase f_{D2} and f_{D1} ratios in the warm envelope. These authors find that f_{D2}/f_{D1} depends on the choice of initial conditions in the prestellar cloud (e.g., the duration and temperature of this phase). A similar conclusion is presented in Taquet et al. (2013b), in which the authors study the formation of deuterated water for a broad range of initial conditions in the prestellar phase. These results suggest that the lower f_{D2}/f_{D1} ratios may stem from different prestellar conditions, which was not included in the study by Furuya et al. (2017). By studying a range of initial conditions, Jensen et al. (2021) show that the D/H ratio of water in the warm envelope is determined by the conditions in the prestellar phase and is not sensitive to variations during the protostellar collapse itself, in other words, suggestive of chemical inheritance of water from the prestellar stages. A high degree of inheritance for water is also suggested by Cleeves et al. (2014), who show that the D/H ratio of water synthesized in situ in protoplanetary disks is low, and find that a high degree of inheritance is necessary to explain the D/H ratios of comets in the Solar System with low ionization rates.

With the high observed D₂O/HDO ratios in the warm envelope, the case for a high degree of inheritance from the prestellar core stage down to the warm envelope ($\lesssim 100$ au) appears strong. The physical and chemical link between the warm envelope and the formation of protoplanetary disks and planets is unclear (e.g., Harsono et al. 2020). Recently, the evidence for early planet formation is growing with a number of detections of planetary signatures in young systems (e.g., Keppler et al. 2018; Teague et al. 2018; Harsono et al. 2018; Pinte et al. 2020; Alves et al. 2020). Furthermore, advances in planet formation theory suggest that planet formation may be a fast process and can occur early (e.g., Johansen & Lambrechts 2017). If planet formation starts early, the chemical inheritance observed in these Class 0 sources may directly impact the chemistry at the onset of planet formation. Currently, the D/H ratio of water in bona fide protoplanetary disks is unknown. An alternative tracer for the chemistry during planet formation is the study of the chemical composition

of comets, including the D/H ratio (e.g., [Mumma & Charnley 2011](#); [Bockelée-Morvan et al. 2015](#)). Comets are planetesimals in the outer solar nebula that record the pristine ice composition in the Solar System during planet formation. Tentative evidence for a chemical link between the warm envelope and protoplanetary disks is emerging. [Altwegg et al. \(2017\)](#) determine the D/H ratios of water in the coma of comet 67P/Churyumov-Gerasimenko (hereafter comet 67P) with the ROSINA instrument. They found $D_2O/HDO = (1.8 \pm 0.9) \times 10^{-2}$ and $HDO/H_2O = (1.05 \pm 0.14) \times 10^{-3}$, corresponding to $f_{D2}/f_{D1} \sim 17$, which is incompatible with in situ D_2O formation in the protoplanetary disk ([Furuya et al. 2017](#)). This suggests a high degree of inheritance, and furthermore the measured D_2O/HDO ratio is similar to the ratios observed in warm envelopes. Overall, current estimates of the D/H ratios of water in comets and warm envelopes could indicate a similar chemical evolution for the cold icy component that constitute comets such as comet 67P, and the material that enters the warm envelope, where ice is sublimated off the dust grains. A chemical link between the warm envelope and cometary bodies is also supported by the apparent correlation between complex organic molecules (COMs) in the hot corino of IRAS 16293-2422 and comet 67P, which may indicate a link between the chemical inventory in cold icy planetesimals and hot corinos ([Drozdovskaya et al. 2019](#)). Similarly, a recent study by [Bianchi et al. \(2019\)](#) also finds a correlation between the abundances of COMs in protostars and comets. The authors compared the inventory of COMs for a larger sample of Class 0 and Class I sources to cometary values in the literature and find good agreement between the abundances of COMs in Class 0 sources and comets, while the Class I sources showed more variation.

4.2. Environmental impact on the D/H ratio

The D_2O/HDO ratios toward B335 and L483 are on the order of 10^{-2} , similar to the lower limit derived in [Coutens et al. \(2014\)](#) toward IRAS 2A. Following the definitions of [Jensen et al. \(2019\)](#), B335 and L483 are isolated protostars (i.e., not associated with any cloud complexes) while IRAS 2A is located in NGC 1333. Given the higher HDO/H_2O ratios in the isolated sources, these results appear to follow the same trend between water deuterium fractionation and protostellar environment. The isolated protostars show higher D/H ratios in HDO and similar D_2O/HDO ratios, that is, the overall D/H ratio is higher than in clustered counterparts. Another way to illustrate this is to look at the D_2O/H_2O ratio. For L483, B335, and IRAS 2A, the D_2O/H_2O is 9×10^{-5} , 4×10^{-5} , and 2×10^{-5} , respectively. Hence, the D_2O/H_2O ratios toward the isolated protostars are a factor ≥ 2 higher than the clustered source observed so far. The D_2O abundances therefore corroborate a higher D/H ratio of water toward isolated protostars, similar to the trend observed in HDO. However, the sample size remains too small to draw definite conclusions and should be further expanded.

[Jensen et al. \(2019\)](#) propose that the observed trend in D/H ratios could originate from either higher temperatures or stronger irradiation in star-forming clusters, or a difference in the collapse timescale between isolated cores, which is subject to limited external perturbations, and clustered sources for which several mechanisms may perturb the dynamics of the cores, such as jets and outflows from nearby stars. Clustered star-forming regions may also be intrinsically more turbulent; that is, the probability of multiple star formation events may correlate with the turbulence in the region (e.g., [Ward-Thompson et al. 2007](#); [Krumholz 2014](#)).

The physicochemical 3D models of water deuteration presented in [Jensen et al. \(2021\)](#) find that variations in the temperature or duration of the prestellar phase can induce the observed dichotomy in water D/H ratios. Higher temperatures during both the prestellar core phase and protostellar collapse lead to lower D/H ratios of water. Similarly, a shorter embedded phase (i.e., a shorter prestellar core duration) leads to a lower D/H ratio, which is consistent with the hypothesis that clustered sources collapse on shorter timescales. Both effects can drive the differences in D/H ratios between clustered and isolated low-mass protostars. Meanwhile, variations in irradiation appear unlikely to directly drive the dichotomy in observed D/H water ratios in the warm envelope toward low-mass protostars. The study by [Jensen et al. \(2021\)](#) demonstrates a link between the chemistry in the prestellar stages and gas-phase water D/H ratio in the warm envelope, which is corroborated by the observed D/H ratios of water from this region toward Class 0 sources. This link motivates further study, both observationally and theoretically, to determine whether other molecules exhibit a similar link between conditions in the environment and the chemistry in the warm envelope region toward young embedded protostars.

5. Summary and outlook

This work presents the first ALMA observations of D_2O in the warm envelope toward low-mass protostars. We determine HDO/H_2O and D_2O/HDO ratios by combining the column densities of D_2O with HDO and $H_2^{18}O$ data. These ratios provide new insights into the chemical evolution of water during the star formation process.

- Both L483 and B335 have D_2O/HDO ratios $\geq 10^{-2}$. When combined with previous ALMA estimates of the HDO/H_2O ratios, the $[D_2O/HDO]/[HDO/H_2O]$ ratios are derived to be ~ 2.5 and ~ 2 , respectively. D/H ratios of this magnitude are strong evidence of chemical inheritance from the prestellar core stage. Chemical models suggest that a D_2O/HDO ratio of this magnitude can only form during the cold phase prior to star formation.
- Both sources are isolated and show enhanced D_2O/H_2O ratios compared to a clustered counterpart by a factor of ≥ 2 . The high D_2O/H_2O ratios strengthen the evidence for a correlation between the D/H ratio of water and the protostellar environment, as suggested in [Jensen et al. \(2019\)](#). This is consistent with a high degree of inheritance from the prestellar phases and provides a mechanism for chemical diversity in the envelopes surrounding embedded protostars (e.g., through a longer duration or colder temperatures in the prestellar phase).
- The observed D_2O/HDO ratios in hot corinos are similar to the value measured in Comet 67P of $\sim 10^{-2}$, providing tentative evidence of a common chemical evolution of the water that sublimates in the warm envelope and water incorporated in comets and icy planetesimals that are the building blocks of planets in the Solar System.

These observations highlight the power of the deuterium fractionation as a tracer for the chemical trail during star formation. More observations of the D/H ratios of water at different stages of star and planet formation will provide further constraints on the amount of inheritance between the evolutionary stages and establish the impact of the local environment on the chemical evolution. The relation between the local cloud environment and isotope fractionation should be explored further by studying, for

example, nitrogen or carbon fractionation, toward both isolated and clustered sources at various evolutionary stages.

Acknowledgements. The authors thank the referee for useful comments that helped improve the manuscript. This paper makes use of the following ALMA data: ADS/JAO.ALMA#2017.1.00693.S, ADS/JAO.ALMA#2019.1.00720.S. ALMA is a partnership of ESO (representing its member states), NSF (USA) and NINS (Japan), together with NRC (Canada), NSC and ASIAA (Taiwan), and KASI (Republic of Korea), in cooperation with the Republic of Chile. The Joint ALMA Observatory is operated by ESO, AUI/NRAO and NAOJ. The group of JKJ acknowledges support from the European Research Council (ERC) under the European Union's Horizon 2020 research and innovation programme (grant agreement no. 646908) through ERC Consolidator Grant "S4F". A.C. acknowledges financial support from the Agence Nationale de la Recherche (grant ANR-19-ERC7-0001-01). This paper makes use of MATPLOTLIB (Hunter 2007) and SCIPY (Virtanen et al. 2020).

References

- Altwegg, K., Balsiger, H., Berthelier, J. J., et al. 2017, *Phil. Trans. Roy. Soc. London Ser. A*, **375**, 20160253
- Alves, F. O., Cleaves, L. I., Girart, J. M., et al. 2020, *ApJ*, **904**, L6
- Anderson, T., Herbst, E., & Delucia, F. C. 1993, *J. Mol. Spectr.*, **159**, 410
- Bergin, E. A., & Snell, R. L. 2002, *ApJ*, **581**, L105
- Bianchi, E., Codella, C., Ceccarelli, C., et al. 2019, *MNRAS*, **483**, 1850
- Bockelée-Morvan, D., Calmonte, U., Charnley, S., et al. 2015, *Space Sci. Rev.*, **197**, 47
- Boogert, A. C. A., Gerakines, P. A., & Whittet, D. C. B. 2015, *ARA&A*, **53**, 541
- Brünken, S., Müller, H. S. P., Endres, C., et al. 2007, *Phys. Chem. Chem. Phys.*, **9**, 2103
- Butner, H. M., Charnley, S. B., Ceccarelli, C., et al. 2007, *ApJ*, **659**, L137
- Caselli, P., Walmsley, C. M., Tafalla, M., Dore, L., & Myers, P. C. 1999, *ApJ*, **523**, L165
- Caselli, P., van der Tak, F. F. S., Ceccarelli, C., & Bacmann, A. 2003, *A&A*, **403**, L37
- Caselli, P., Keto, E., Bergin, E. A., et al. 2012, *ApJ*, **759**, L37
- Ceccarelli, C., Castets, A., Caux, E., et al. 2000, *A&A*, **355**, 1129
- Ceccarelli, C., Caselli, P., Bockelée-Morvan, D., et al. 2014, in *Protostars and Planets VI*, eds. H. Beuther, R. S. Klessen, C. P. Dullemond, & T. Henning, 859
- Chyba, C. F., & Hand, K. P. 2005, *ARA&A*, **43**, 31
- Cleeves, L. I., Bergin, E. A., Alexander, C. M. O. D., et al. 2014, *Science*, **345**, 1590
- Coutens, A., Vastel, C., Caux, E., et al. 2012, *A&A*, **539**, A132
- Coutens, A., Jørgensen, J. K., Persson, M. V., et al. 2014, *ApJ*, **792**, L5
- Coutens, A., Commerçon, B., & Wakelam, V. 2020, *A&A*, **643**, A108
- Dartois, E., Thi, W. F., Geballe, T. R., et al. 2003, *A&A*, **399**, 1009
- de Lucia, F. C., Helminger, P., Cook, R. L., & Gordy, W. 1972, *Phys. Rev. A*, **6**, 1324
- Drozdovskaya, M. N., van Dishoeck, E. F., Rubin, M., Jørgensen, J. K., & Altwegg, K. 2019, *MNRAS*, **490**, 50
- Dullemond, C. P., Juhasz, A., Pohl, A., et al. 2012, *RADMC-3D: a multi-purpose radiative transfer tool*
- Endres, C. P., Drouin, B. J., Pearson, J. C., et al. 2009, *A&A*, **504**, 635
- Enoch, M. L., Evans, Neal J. I., Sargent, A. I., et al. 2008, *ApJ*, **684**, 1240
- Furuya, K., van Dishoeck, E. F., & Aikawa, Y. 2016, *A&A*, **586**, A127
- Furuya, K., Drozdovskaya, M. N., Visser, R., et al. 2017, *A&A*, **599**, A40
- Goldsmith, P. F., & Langer, W. D. 1999, *ApJ*, **517**, 209
- Harsono, D., Bjerke, P., van der Wiel, M. H. D., et al. 2018, *Nat. Astron.*, **2**, 646
- Harsono, D., Persson, M. V., Ramos, A., et al. 2020, *A&A*, **636**, A26
- Hocuk, S., Szűcs, L., Caselli, P., et al. 2017, *A&A*, **604**, A58
- Hunter, J. D. 2007, *Comput. Sci. Eng.*, **9**, 90
- Imai, M., Sakai, N., Oya, Y., et al. 2016, *ApJ*, **830**, L37
- Imai, M., Oya, Y., Sakai, N., et al. 2019, *ApJ*, **873**, L21
- Jacobsen, S. K., Jørgensen, J. K., Di Francesco, J., et al. 2019, *A&A*, **629**, A29
- Johansen, A., & Lambrechts, M. 2017, *Ann. Rev. Earth Planet. Sci.*, **45**, 359
- Jensen, S. S., Jørgensen, J. K., Kristensen, L. E., et al. 2019, *A&A*, **631**, A25
- Jensen, S. S., Jørgensen, J. K., Furuya, K., Haugbølle, T., & Aikawa, Y. 2021, *A&A*, **649**, A66
- Jørgensen, J. K., & van Dishoeck, E. F. 2010, *ApJ*, **725**, L172
- Jørgensen, J. K., van der Wiel, M. H. D., Coutens, A., et al. 2016, *A&A*, **595**, A117
- Jørgensen, J. K., Müller, H. S. P., Calcutt, H., et al. 2018, *A&A*, **620**, A170
- Karska, A., Kaufman, M. J., Kristensen, L. E., et al. 2018, *ApJS*, **235**, 30
- Kepler, M., Benisty, M., Müller, A., et al. 2018, *A&A*, **617**, A44
- Kristensen, L. E., van Dishoeck, E. F., Mottram, J. C., et al. 2017, *A&A*, **605**, A93
- Krumholz, M. R. 2014, *Phys. Rep.*, **539**, 49
- Mangum, J. G., & Shirley, Y. L. 2015, *PASP*, **127**, 266
- McMullin, J. P., Waters, B., Schiebel, D., Young, W., & Golap, K. 2007, in *Astronomical Data Analysis Software and Systems XVI*, eds. R. A. Shaw, F. Hill, & D. J. Bell, *Astronomical Society of the Pacific Conference Series* **376**, 127
- Messer, J., Lucia, F. C. D., & Helminger, P. 1984, *J. Mol. Spectr.*, **105**, 139
- Möller, T., Endres, C., & Schilke, P. 2017, *A&A*, **598**, A7
- Müller, H. S. P., Thorwirth, S., Roth, D. A., & Winnewisser, G. 2001, *A&A*, **370**, L49
- Mumma, M. J., & Charnley, S. B. 2011, *ARA&A*, **49**, 471
- Oya, Y., Sakai, N., Watanabe, Y., et al. 2017, *ApJ*, **837**, 174
- Parise, B., Caux, E., Castets, A., et al. 2005, *A&A*, **431**, 547
- Persson, M. V., Jørgensen, J. K., van Dishoeck, E. F., & Harsono, D. 2014, *A&A*, **563**, A74
- Persson, M. V., Harsono, D., Tobin, J. J., et al. 2016, *A&A*, **590**, A33
- Pickett, H. M., Poynter, R. L., Cohen, E. A., et al. 1998, *J. Quant. Spectr. Rad. Transf.*, **60**, 883
- Pinte, C., Price, D. J., Ménard, F., et al. 2020, *ApJ*, **890**, L9
- Roberts, H., Herbst, E., & Millar, T. J. 2003, *ApJ*, **591**, L41
- Sánchez-Monge, Á., Schilke, P., Ginsburg, A., Cesaroni, R., & Schmiedeke, A. 2018, *A&A*, **609**, A101
- Stark, R., Sandell, G., Beck, S. C., et al. 2004, *ApJ*, **608**, 341
- Taquet, V., López-Sepulcre, A., Ceccarelli, C., et al. 2013a, *ApJ*, **768**, L29
- Taquet, V., Peters, P. S., Kahane, C., et al. 2013b, *A&A*, **550**, A127
- Teague, R., Bae, J., Bergin, E. A., Birnstiel, T., & Foreman-Mackey, D. 2018, *ApJ*, **860**, L12
- Tielens, A. G. G. M. 1983, *A&A*, **119**, 177
- van Dishoeck, E. F., Bergin, E. A., Lis, D. C., & Lunine, J. I. 2014, in *Protostars and Planets VI*, eds. H. Beuther, R. S. Klessen, C. P. Dullemond, & T. Henning, 835
- van Dishoeck, E. F., Kristensen, L. E., Mottram, J. C., et al. 2021, *A&A*, **648**, A24
- Vastel, C., Phillips, T. G., & Yoshida, H. 2004, *ApJ*, **606**, L127
- Virtanen, P., Gommers, R., Oliphant, T. E., et al. 2020, *Nat. Methods*, **17**, 261
- Visser, R., van Dishoeck, E. F., Doty, S. D., & Dullemond, C. P. 2009, *A&A*, **495**, 881
- Ward-Thompson, D., André, P., Crutcher, R., et al. 2007, in *Protostars and Planets V*, eds. B. Reipurth, D. Jewitt, & K. Keil, 33
- Whittet, D. C. B., Schutte, W. A., Tielens, A. G. G. M., et al. 1996, *A&A*, **315**, L357
- Wilson, T. L., & Rood, R. 1994, *ARA&A*, **32**, 191

Appendix A: Full synthetic models

The complete synthetic spectrum models for H_2^{18}O , HDO, D_2O , CH_3OD , CH_3OCH_3 are shown in the Figs. A.1 and A.2.

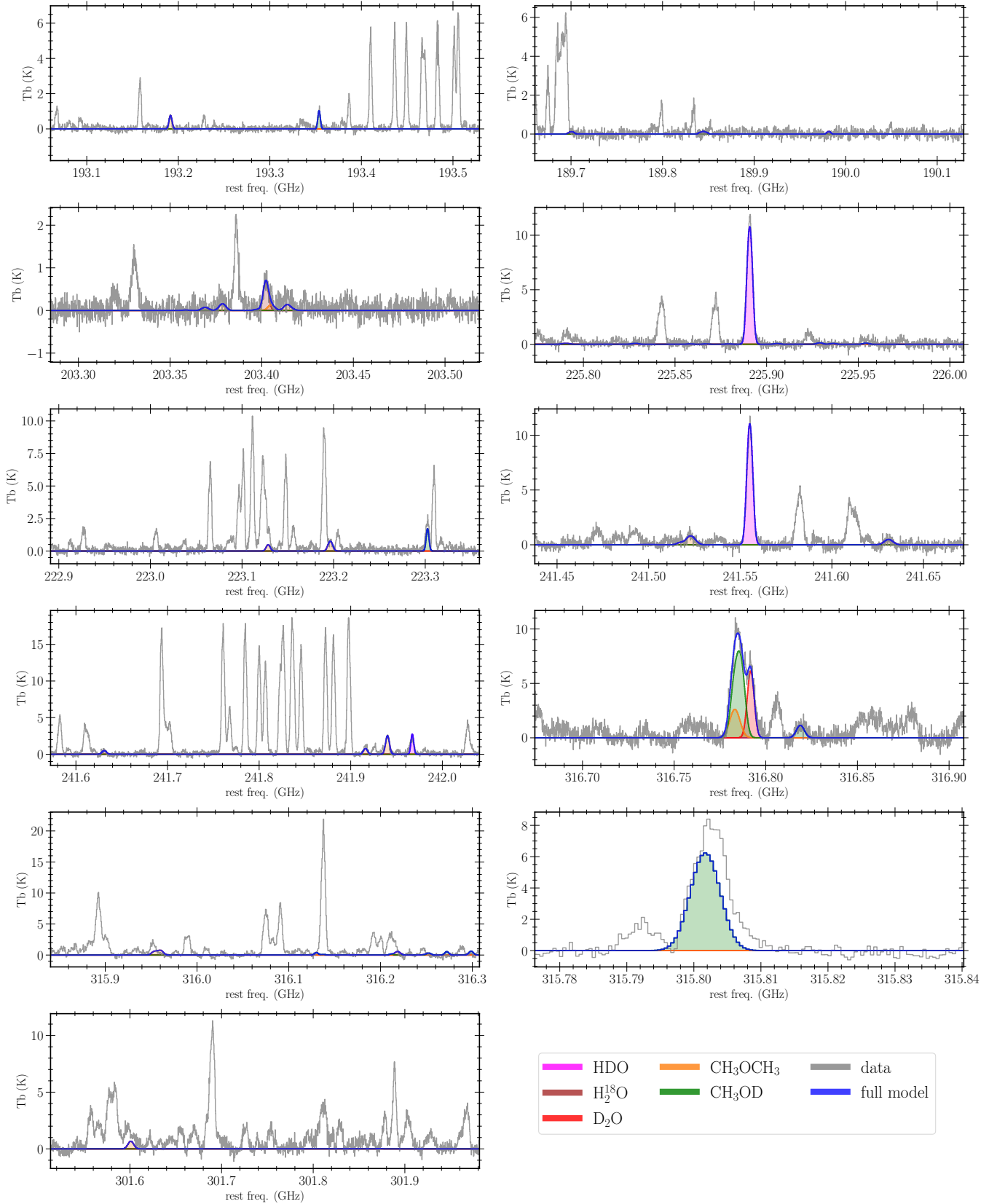


Fig. A.1. Overview of the complete synthetic spectrum model for emission lines toward B335 for an assumed source size of $0''.2$. The full model includes H_2^{18}O , HDO, D_2O , CH_3OD , and CH_3OCH_3 .

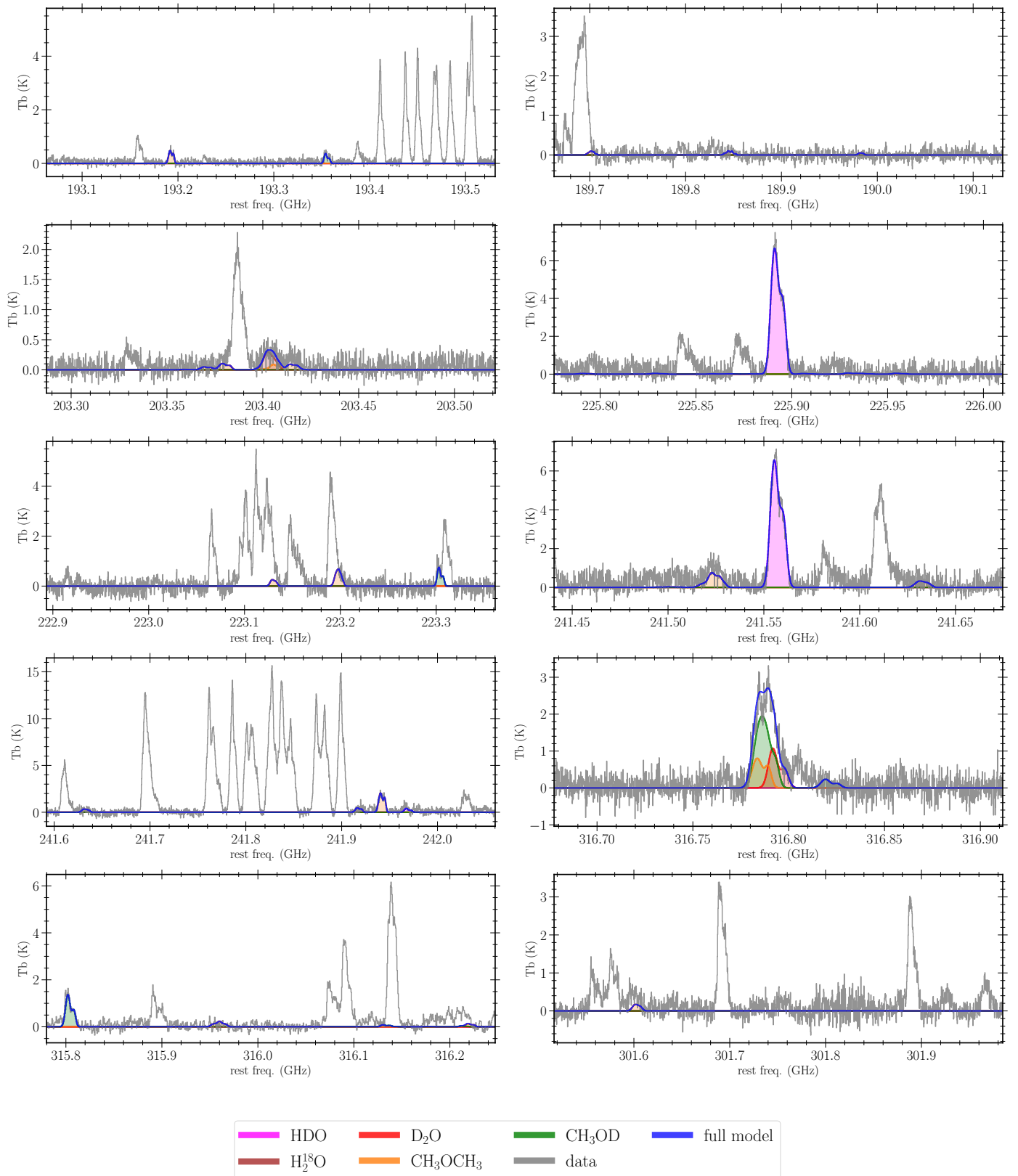


Fig. A.2. Overview of the complete synthetic spectrum model for emission lines toward L483 for an assumed source size of $0''.2$. The full model includes H₂¹⁸O, HDO, D₂O, CH₃OD, and CH₃OCH₃.