



Universiteit
Leiden
The Netherlands

HCN/HNC chemistry in shocks: a study of L1157-B1 with ASAI

Lefloch, B.; Busquet, G.; Viti, S.; Vastel, C.; Mendoza, E.; Benedettini, M.; ... ; Bachiller, R.

Citation

Lefloch, B., Busquet, G., Viti, S., Vastel, C., Mendoza, E., Benedettini, M., ... Bachiller, R. (2021). HCN/HNC chemistry in shocks: a study of L1157-B1 with ASAI. *Monthly Notices Of The Royal Astronomical Society*, 507(1), 1034-1046. doi:10.1093/mnras/stab2134

Version: Accepted Manuscript

License: [Leiden University Non-exclusive license](#)

Downloaded from: <https://hdl.handle.net/1887/3264060>

Note: To cite this publication please use the final published version (if applicable).

HCN/HNC chemistry in shocks: a study of L1157-B1 with ASAI

B. Lefloch¹, G. Busquet^{1,2,3}, S. Viti^{4,5}, C. Vastel⁶, E. Mendoza⁷, M. Benedettini⁸, C. Codella^{9,1}, L. Podio⁹, A. Schutzer¹, P.R. Rivera-Ortiz¹, J.R.D. Lépine⁷, R. Bachiller¹⁰

¹Univ. Grenoble Alpes, CNRS, IPAG, F-38000 Grenoble, France

²Institut de Ciències de l'Espai (ICE, CSIC), Can Magrans, s/n, 08193 Cerdanyola del Vallès, Catalonia, Spain

³Institut d'Estudis Espacials de Catalunya (IEEC), 08034 Barcelona, Catalonia, Spain

⁴Leiden Observatory, Leiden University, PO Box 9513, NL-2300 RA Leiden, the Netherlands

⁵Department of Physics and Astronomy, University College London, Gower Street, London, WC1E 6BT, England

⁶IRAP, Université de Toulouse, CNRS, UPS, CNES, 31400 Toulouse, France

⁷Instituto de Astronomia, Geofísica e Ciências Atmosféricas, Universidade de São Paulo, São Paulo 05508-090, SP, Brazil

⁸INAF, Istituto di Astrofisica e Planetologia Spaziali, via Fosso del Cavaliere 100, 00133 Roma, Italy

⁹INAF, Osservatorio Astrofisico di Arcetri, Largo Enrico Fermi 5, I-50125 Firenze, Italy

¹⁰IGN, Observatorio Astronómico Nacional, Calle Alfonso XII, 3 E-28004 Madrid, Spain

Accepted 2021 July 13. Received 2021 June 14; in original form 2021 April 14.

ABSTRACT

HCN and its isomer HNC play an important role in molecular cloud chemistry and the formation of more complex molecules. We investigate here the impact of protostellar shocks on the HCN and HNC abundances from high-sensitivity IRAM 30m observations of the prototypical shock region L1157-B1 and the envelope of the associated Class 0 protostar, as a proxy for the pre-shock gas. The isotopologues H¹²CN, HN¹²C, H¹³CN, HN¹³C, HC¹⁵N, H¹⁵NC, DCN and DNC were all detected towards both regions. Abundances and excitation conditions were obtained from radiative transfer analysis of molecular line emission under the assumption of Local Thermodynamical Equilibrium. In the pre-shock gas, the abundances of the HCN and HNC isotopologues are similar to those encountered in dark clouds, with a HCN/HNC abundance ratio ≈ 1 for all isotopologues. A strong D-enrichment ($D/H \approx 0.06$) is measured in the pre-shock gas. There is no evidence of ¹⁵N fractionation neither in the quiescent nor in the shocked gas. At the passage of the shock, the HCN and HNC abundances increase in the gas phase in different manners so that the HCN/HNC relative abundance ratio increases by a factor 20. The gas-grain chemical and shock model UCLCHEM allows us to reproduce the observed trends for a C-type shock with pre-shock density $n(H) = 10^5 \text{ cm}^{-3}$ and shock velocity $V_s = 40 \text{ km s}^{-1}$. We conclude that the HCN/HNC variations across the shock are mainly caused by the sputtering of the grain mantle material in relation with the history of the grain ices.

Key words: astrochemistry – methods: observational – ISM: jets and outflow – ISM: molecules – ISM: abundances

1 INTRODUCTION

Hydrogen cyanide (HCN) is one of the most simple interstellar molecules. Thanks to its large dipole moment (2.99 Debye; [Bhattacharya & Gordy 1960](#)), its rotation transitions are good probe of dense molecular gas in Galactic and extragalactic environments. HCN and its isomer hydrogen isocyanide HNC are thought to play an important role in the formation of more complex molecules, like cyanopolyynes HC_{2n+1}N, either in dark cloud cores ([Suzuki et al. 1992](#)) or in more energetic regions, like protostellar shocks ([Mendoza et al. 2018](#)). Since HCN and HNC have similar energy spectra and dipole moments, their differences in spatial distribution is mainly related to the gas chemical conditions. For this reason, they have often been used as probes of gas chemical evolution in both dense cores and star-forming regions ([Schilke et al. 1992](#); [Ungerechts et al. 1997](#); [Daniel et al. 2013](#)).

Many systematic studies of dark clouds and low-mass pro-

tostellar cores have shown the HNC/HCN ratio to be close to unity (see e.g., [Irvine & Schloerb 1984](#); [Hirota et al. 1998](#); [Hily-Blant et al. 2010](#)). No difference is observed between the values measured in prestellar and protostellar cores, implying that the evaporation of HCN and HNC from dust grains does not contribute significantly to the observed emission in the cold envelope. On the contrary, towards the high-mass star forming region OMC-1 in Orion, the HNC/HCN ratio displays strong variations with especially low values ≈ 0.01 towards the hot core regions while it is of the order of 0.2 in adjacent ridge positions. While the abundance of HCN is similar to that of dark cloud cores, the HNC abundance is 2 orders of magnitude lower in the high-temperature gas of the hot core ([Schilke et al. 1992](#)). A somewhat similar behaviour is observed towards IRAS16293–2422 when looking at the high-excitation lines of HCN and HNC ([van Dishoeck et al. 1995](#)). Recently, [Hacar et al. \(2020\)](#) demonstrated the high

sensitivity of the HCN/HNC $J=1-0$ line intensity ratio to the gas kinetic temperature.

In his pioneering work on outflow shock chemistry [Bachiller & Pérez-Gutiérrez \(1997\)](#) brought the first hints of HCN abundance enhancement in protostellar shock region. At that time, only a low number of molecular transitions was observed with the IRAM 30m telescope, hence preventing an accurate determination of the excitation conditions and molecular abundances. From a theoretical point of view, both the dependence of the HCN/HNC ratio to the temperature and the sputtering of dust grains are two processes which could *a priori* alter molecular gas abundances of HCN and HNC across a shock.

Many subsequent observational studies on the physical and chemical characterization of L1157-B1 have been carried out both with (sub)millimeter single-dish and interferometers, which led to a rather detailed, consistent picture of the outflow shock while unveiling its chemical richness (see e.g. [Codella et al. \(2010, 2017\)](#); [Viti et al. \(2011\)](#); [Lefloch et al. \(2012, 2016, 2017\)](#); [Busquet et al. \(2014\)](#); [Mendoza et al. \(2014, 2018\)](#); [Podio et al. \(2014, 2016, 2017\)](#); [Gómez-Ruiz et al. \(2015\)](#)). The spatial distribution of the HCN emission in the L1157 southern outflow lobe was obtained at $\approx 5''$ scale for the first time by [Benedettini et al. \(2007\)](#) with the IRAM Plateau de Bure interferometer. The emission of the rare ^{13}C , D and ^{15}N isotopologues was investigated a few years later at a few arcsec resolution with the IRAM NOEMA interferometer ([Busquet et al. 2017](#); [Benedettini et al. 2021](#)). In particular, the distribution of DCN was shown to result from a combination of gas-phase chemistry that produces the widespread DCN emission, dominating especially in the head of the bow-shock, and sputtering from grain mantles toward the jet impact region.

These results incited us to revisit the emission of the HCN and HNC isotopologues in L1157-B1 in a more comprehensive and accurate way than was possible before. This study benefits from the unbiased and high-sensitivity millimeter spectral line survey of the shock region carried out as part of the IRAM 30m Large Program ASAI (“Astrochemical Surveys At IRAM”, [Lefloch et al. \(2018\)](#)). In order to better understand and constrain more precisely the impact of the shock on the chemistry of HCN and HNC, we have also investigated the properties of their isotopologue emission in the envelope of the Class 0 protostar L1157-mm, at about 1 arcmin away, which we took as a proxy of the initial gas composition before the arrival of the shock. The origin of the molecular emission was then derived from comparison of our observational results with the predictions of the time-dependent gas-grain chemical and shock model UCLCHEM ([Holdship et al. 2017](#)).

The paper has been organized as follows. In Sect. 2, we summarize the main observational properties of the shock region L1157-B1. The observations are described in Sect. 3. In Sect. 4, we present our results on the HCN spatial distribution in the region and the gas properties (excitation temperature, column density, abundance) obtained for the HCN and HNC isotopologues based on a simple radiative transfer analysis of the line emission. We discuss in Section 5 the behaviour of HCN and HNC across the shock and we analyse the origin of the molecular emission from comparison with the results of our modelling. Finally, we present our conclusions in Sect. 6.

2 THE SOURCE

The GAIA mission has led to a revision of the distance to L1157 by several groups [Dzib et al. \(2018\)](#) and [?](#), who found (360 ± 32) pc and (340 ± 21) pc, respectively. In this work, we will adopt the value of (352 ± 19) pc derived by [Zucker et al. \(2019\)](#), in agreement with [Benedettini et al. \(2021\)](#). [Gueth, Guilloteau, & Bachiller \(1996, 1998\)](#) have studied at high-angular resolution ($\approx 3''$) the structure and dynamics of the southern lobe of the outflow driven by the protostar L1157-mm from the emission of the CO $J=1-0$ and SiO $J=2-1$ lines observed with the IRAM Plateau de Bure interferometer. These authors showed that the southern lobe of this molecular outflow consists of two cavities, likely created by the propagation of large bow shocks due to episodic events in a precessing, highly collimated, high-velocity jet. This jet was detected by [Tafalla et al. \(2015\)](#) and imaged by [Podio et al. \(2016\)](#). Based on higher-angular and high-sensitivity CO observations with NOEMA at $0.3''$, [Podio et al. \(2016\)](#) refined the jet precession modelling by [Gueth, Guilloteau, & Bachiller \(1996\)](#) and estimated an age of ≈ 1500 yr for B1 (and 2500 yr for B2), adopting the new distance of 352 pc. Located at the apex of the more recent cavity, the bright bow shock region B1 displays a peculiar molecular complexity (e.g., [Codella et al. 2010](#); [Benedettini et al. 2012](#)), which makes it a benchmark for magnetized shock models (e.g., [Gusdorf et al. 2008a,b](#); [Viti et al. 2011](#)). Multi-transition analysis of the emission of tracers such as CO ([Lefloch et al. 2010, 2012](#)), H₂O ([Busquet et al. 2014](#)) and CS ([Gómez-Ruiz et al. 2015](#)) has allowed to elucidate a coherent scenario where the molecular emission appears to arise from four physically distinct components, with specific excitation conditions:

- Component g_1 : [Lefloch et al. \(2012\)](#) and [Benedettini et al. \(2012\)](#) evidenced a region of high excitation of $\approx 10''$ size, with a kinetic temperature $T_{\text{kin}} \approx 200$ K and gas density $n(\text{H}_2) \simeq 10^6 \text{ cm}^{-3}$. This region is associated with the impact of the jet against the L1157-B1 bow shock.
- Component g_2 is tracing the outflow cavity associated with L1157-B1, for which a kinetic temperature $T_{\text{kin}} \approx 60$ K and a gas density $n(\text{H}_2) \simeq (1-10) \times 10^5 \text{ cm}^{-3}$ were estimated.
- Component g_3 is tracing the late outflow cavity associated with L1157-B2, for which have been estimated $T_{\text{kin}} \approx 20$ K and $n(\text{H}_2) \simeq 10^5 \text{ cm}^{-3}$
- A hot ($T_{\text{kin}} \simeq 1000$ K) and tenuous gas component ($n(\text{H}_2) \simeq 10^3 - 10^4 \text{ cm}^{-3}$) with a size of $2''$ -

3 OBSERVATIONS

3.1 ASAI

Observations of L1157-B1 and L1157-mm were carried out during several runs between September 2012 and March 2015 as part of the Large Program ASAI ([Lefloch et al. 2018](#)). The source nominal positions are $\alpha_{J2000} = 20^{\text{h}} 39^{\text{m}} 10.^{\text{s}}2$ $\delta_{J2000} = +68^{\circ} 01' 10''$ for L1157-B1 and $\alpha_{J2000} = 20^{\text{h}} 39^{\text{m}} 06.^{\text{s}}3$ $\delta_{J2000} = +68^{\circ} 02' 15.8''$ for L1157-mm. We made use of the broad-band EMIR receivers connected to Fast Fourier Transform Spectrometers in the 200 kHz spectral resolution mode.

Detailed information on the observation and the data reduction procedures can be found in [Lefloch et al. \(2018\)](#).

The ASAI observations were carried out using the "Wobbler Switching" (WSW) mode with a throw of 3'.

3.2 On-The-Fly mapping

The ASAI dataset was complemented with a fully sampled map of the HCN $J=3-2$ transition in the southern lobe of the L1157 outflow with the IRAM 30m telescope in December 2013. The size of the map, $2' \times 2.5'$, is large enough to encompass the whole southern lobe. Observations were carried out with the receiver E230 and the FTS spectrometer in its 192 kHz resolution mode, using the On-The-Fly mode. We chose a reference position offset by $10'$ in right ascension from L1157-B1, and checked to be free of emission in the HCN $J=3-2$ line. Atmospheric calibrations were performed every 15 min and showed the weather to be stable, with 2.5 – 3.0 mm of precipitable water vapour, and system temperatures in the range 450 – 550 K. Pointing was monitored every hour and corrections were always found lower than $3''$.

3.3 Data reduction

The data reduction was performed using the GILDAS/CLASS software¹. We have detected several transitions of HCN, HNC, and their rare ^{13}C -, D-, ^{15}N -isotopologues, between 72 and 272 GHz, towards the shock region L1157-B1 and the protostar L1157-mm. The line spectra are presented in Figs. 2–5. The resolution of the spectrometer allowed us to resolve the hyperfine structure of the rotational transitions of HCN, H^{13}CN and DCN. The location of the hyperfine components are indicated by red arrows in the spectra. The line intensities are expressed in units of antenna temperature corrected for atmospheric attenuation and rearward losses (T_A^*).

For subsequent analysis and radiative transfer modelling, fluxes were expressed in main beam temperature units (T_{mb}). The telescope and receiver parameters (beam efficiency, B_{eff} ; forward efficiency, F_{eff} ; Half Power beam Width, HPBW) were taken from the IRAM webpage². The calibration uncertainties are typically 10, 15, 20% at 3 mm, 2 mm, 1.3 mm, respectively.

The spectroscopic properties and the observational parameters of all the detected transitions are summarized in Tables 1–2, for L1157-B1 and L1157-mm, respectively. We extracted the observational properties of the line profiles (velocity-integrated flux, Full Width at Half Maximum, emission peak velocity) performing a simple gaussian fitting using CLASS whenever possible. The only exceptions concern HCN and H^{13}CN in L1157-B1, where the presence of several components prevents from disentangling the emission of the hyperfine satellites. In that case, the total flux (in $T_A^* \text{ km s}^{-1}$) was obtained from integrating over the whole velocity range of emission.

4 RESULTS

4.1 Spatial distribution

In Fig. 1, we show in white contours the spatial distribution of the HCN $J=3-2$ velocity-integrated emission between -20 and $+5 \text{ km s}^{-1}$ over the southern outflow lobe. The emission draws two extended features of different Parallactic Angles, which coincide with the two CO outflow cavities identified by Gueth, Guilloteau, & Bachiller (1996). The emission peaks at the nominal position of the outflow shock position B1. Secondary emission peaks are found towards the shock positions B0 and B2, at about $30''$ north and south of B1, respectively (Bachiller et al. 2001). Hardly any emission is detected along the outflow between B0 and the protostar (located North, red cross in Fig. 1). The systemic velocity of L1157 is $+2.7 \text{ km s}^{-1}$ (Bachiller & Pérez-Gutiérrez 1997). We show in color scale in Fig. 1 the HCN $J=3-2$ emission integrated over the three velocity intervals (in km s^{-1}): $[-10.2; -2.7]$, $[-2.7; +4.3]$ and $[+4.3; +6.3]$, from left to right. We find that the low-velocity emission (middle panel in Fig. 1) is associated with the bright shocked regions B0, B1, and B2, as well as faint and extended emission tracing the whole outflow lobe. As shown by Podio et al. (2016), the outflow is oriented almost in the plane of the sky (inclination $i \sim 73^\circ$). We propose that the HCN emission between -2.7 and $+4.3 \text{ km s}^{-1}$ could arise from low-velocity shocks associated with the cavity walls of the outflow, which would explain the extended emission at blue- and red-shifted velocities. This is consistent with the distribution of the HCN $J=1-0$ emission line as mapped by Benedettini et al. (2007) at $\approx 5''$ with the Plateau de Bure Interferometer. The high-velocity blueshifted gas traces the young shocks B0 and B1 (left panel in Fig. 1), while the red-shifted emission is only detected toward the oldest B2 shock (right panel). These maps indicate that the shocked gas in B0 and B1 emit at a velocity distinct from that of B2. Interestingly, the brightest HCN $J=3-2$ emission coincides with the apex of the outflow cavities, consistent with the high angular resolution NOEMA images of H^{13}CN and HC^{15}N (Busquet et al. 2017; Benedettini et al. 2021).

To summarize, HCN emission is detected throughout most of the southern outflow lobe, from B0 to the tip of the outflow at position B2, and the brightest emission regions are associated with outflow shocks. This is consistent with the distribution of the HCN $J=1-0$ emission line as mapped by Benedettini et al. (2007) at $\approx 5''$ with the Plateau de Bure Interferometer.

4.2 L1157-B1

All the transitions of the HCN isotopologues and most of the transitions of the HNC isotopologues present in the spectral range of ASAI, between 72 and 272 GHz, were detected towards the shock region (see Table 1). Due to instrumental (spectral bandwidth) and observational (rms noise) limitations, only the ground state transitions of HN^{13}C and H^{15}NC were detected with a $\text{SNR} > 3$. The profiles of the transitions display broad linewidths (up to $\approx 10 \text{ km s}^{-1}$). All the line profiles peak at $V_{\text{lsr}} \approx 0 \text{ km s}^{-1}$ and trace blueshifted gas, in agreement with the other molecular tracers reported in previous works (Lefloch et al. 2012; Codella et al. 2012; Gómez-Ruiz et al. 2015).

¹ <https://www.iram.fr/IRAMFR/GILDAS/>

² <http://publicwiki.iram.es/Iram30mEfficiencies/>

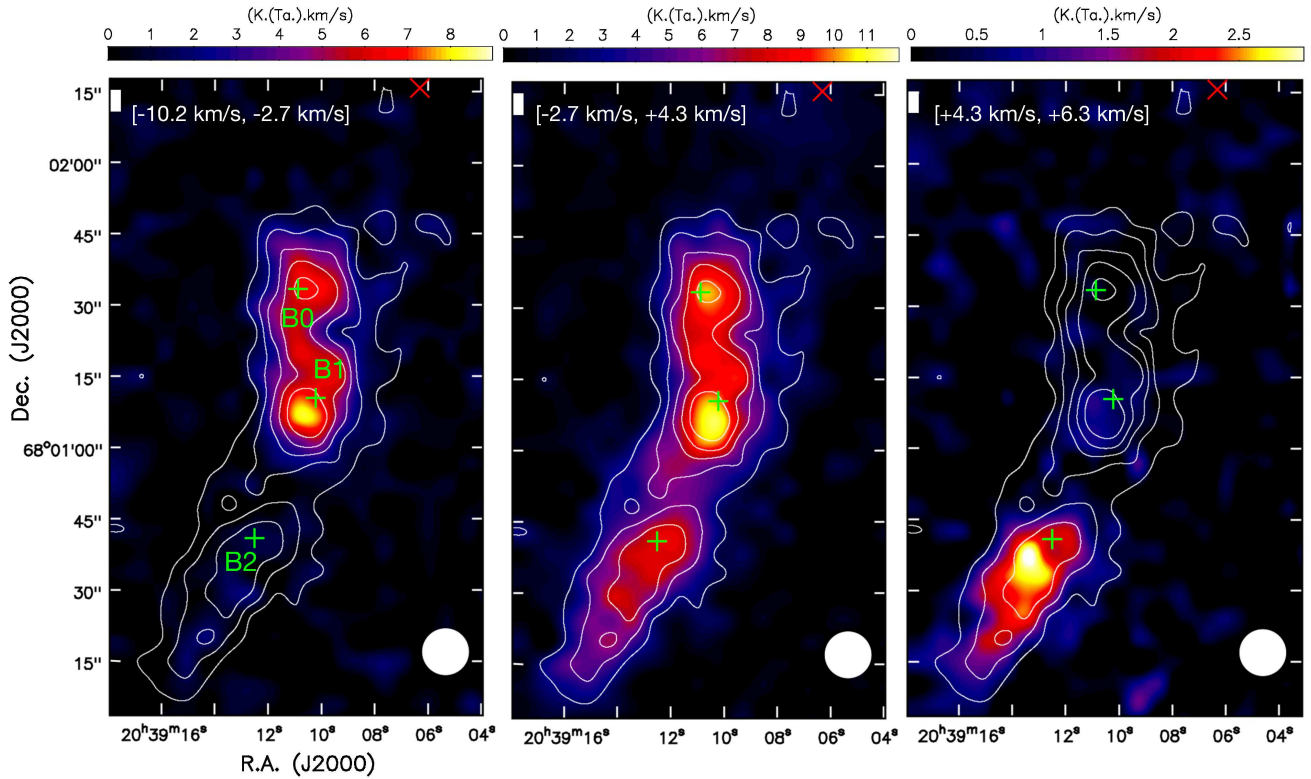


Figure 1. HCN $J=3-2$ velocity-integrated emission in the southern lobe of the L1157 outflow. The emission is integrated over the velocity range indicated in each panel (colour scale) to illustrate the separation of the emitting gas into the B0 and B1 shocks and the B2 shock. The emission in the central panel between -2.7 and $+4.3$ km s $^{-1}$ encompasses the emission from the ambient gas at $V_{lsr} = +2.7$ km s $^{-1}$. White contours represent the total velocity-integrated emission of the HCN $J=3-2$ line. Contour levels range from 3σ to 15σ in steps of 3σ , where $\sigma = 1.07$ K km s $^{-1}$ is the rms noise of the map. In each panel, green crosses mark the nominal position of shocks B0, B1, and B2; a red cross marks the nominal position of protostar L1157-mm (Gueth et al. 1997). The size (HPBW) of the telescope main beam is draw by the white circle in the bottom right corner of each panel.

Table 1. Spectroscopic and observational parameters of the transitions of the HCN and HNC and their rare D, ^{13}C and ^{15}N isotopologues detected towards the protostellar shock L1157-B1. Note that the flux uncertainties reported here contain only the statistical rms noise. TAG is a 5-digit code which indicates the spectroscopic database used for CASSIS line identification and modelling.

Species	TAG	Transition	Frequency MHz	E_u K	A_{ul} 10^{-5} s $^{-1}$	HPBW "	η_{mb}	$\int T_A^* dv$ K km s $^{-1}$	FWHM km s $^{-1}$	V_{lsr} km s $^{-1}$
HCN	27501	1 - 0	88631.602	4.3	2.4	27.8	0.85	31.2(1.5)	4.7(1)	-0.2(1.0)
		3 - 2	265886.434	25.5	83.6	9.3	0.59	29.9(1.0)	9.5(2)	-1.3(.7)
DCN	28509	1 - 0	72414.905	3.5	1.33	34.0	0.86	0.12(.03)	7.9(.5)	-0.2 (.1)
		2 - 1	144828.001	10.4	12.7	17.0	0.79	0.19(.01)	7.0(.3)	-0.3(.2)
H ^{13}CN	28501	3 - 2	217238.538	20.9	46.0	11.3	0.65	0.10(.01)	6.5(.6)	-0.1(.3)
		1 - 0	86340.184	4.1	2.23	28.5	0.85	1.76(.03)	4.8(1)	-0.4(.2)
HC ^{15}N	28506	2 - 1	172677.851	12.4	21.4	14.3	0.75	1.20(.01)	7.2(4)	-0.3 (1)
		3 - 2	259011.798	24.9	77.3	9.5	0.60	0.73(.02)	6.2(1)	-0.34(.3)
HNC	27502	1 - 0	86054.961	4.1	2.2	28.6	0.86	0.35(.01)	6.1(.1)	-1.0(.1)
		2 - 1	172107.956	12.4	21.1	14.3	0.75	0.27(.01)	5.6(.6)	-0.3(.3)
H ^{15}NC	28006	3 - 2	258157.100	24.8	76.5	9.5	0.60	0.13(.01)	6.2(.7)	-0.1(.3)
		1 - 0	90663.568	4.4	2.69	27.1	0.85	4.26(.02)	4.5 (1)	0.3(.1)
HNC	27502	3 - 2	271981.142	26.1	93.4	9.0	0.58	2.36(.04)	3.7(1)	1.5(.3)
		1 - 0	76305.701	3.7	1.60	32.2	0.86	0.010(.004)	1.4(.6)	0.3(.3)
DNC	28508	1 - 0	152609.746	11.0	15.4	16.1	0.77	0.04(.02)	1.7(.6)	0.6(.4)
		3 - 2	228910.481	22.0	55.7	10.7	0.64	0.012(.003)	2.7(.7)	2.1(.3)
HN ^{13}C	28515	1 - 0	87090.825	4.2	2.38	28.3	0.85	0.093(.005)	5.2(.3)	0.8(1)
H ^{15}NC	28006	1 - 0	88865.715	4.3	2.53	27.8	0.85	0.025(.008)	3.4(.3)	1.8(.1)

Table 2. Spectroscopic properties and observational parameters of the transitions of the HCN and HNC and their rare D, ^{13}C and ^{15}N isotopologues detected towards the protostar L1157-mm. Note that the flux uncertainties reported here contain only the statistical rms noise. TAG is a 5-digit code which indicates the spectroscopic database used for CASSIS line identification and modelling.

Species	TAG	Transition	Frequency MHz	E_u K	A_{ul} 10^{-5} s^{-1}	HPBW "	η_{mb}	$\int T_A^* dv$ K km s $^{-1}$	FWHM km s $^{-1}$	V_{lsr} km s $^{-1}$
HCN	27501	1 – 0	88631.602	4.3	2.4	27.8	0.85	3.40(.01)	1.4(.1)	2.2 (.1)
		3 – 2	265886.434	25.5	83.6	9.3	0.59	1.86(.20)	0.8(.1)	2.2 (.1)
DCN	28509	1 – 0	72414.905	3.5	1.3	34.0	0.86	0.49(.02)	1.5(.2)	2.4(.1)
		2 – 1	144828.001	10.4	12.7	17.0	0.79	0.32(.01)	1.0(.1)	2.5(.1)
		3 – 2	217238.538	20.9	46.0	11.3	0.65	0.10(.01)	0.96(.04)	2.8(.1)
H ^{13}CN	28501	1 – 0	86340.184	4.1	2.2	28.5	0.85	0.27 (.02)	1.3(.1)	2.7(.1)
		2 – 1	172677.851	12.4	21.4	14.3	0.75	0.10(.02)	1.4(.3)	2.4(.1)
		3 – 2	259011.798	24.9	77.3	9.5	0.60	0.08(.01)	1.3(.1)	2.7(.1)
HC ^{15}N	28506	1 – 0	86054.961	4.1	2.2	28.6	0.86	0.09(.02)	1.5(.2)	2.6(.1)
		2 – 1	172107.956	12.4	21.1	14.3	0.75	0.06(.01)	1.8(.4)	2.0(.2)
		3 – 2	258157.100	24.8	76.5	9.5	0.60	0.04(.01)	1.5(.2)	2.6(.1)
HNC	27502	1 – 0	90663.568	4.4	2.7	27.1	0.85	3.1(.1)	1.8(.1)	2.4(.1)
		3 – 2	271981.142	26.1	93.4	9.0	0.58	1.3(.1)	0.99(.1)	2.5(.1)
DNC	28508	1 – 0	76305.701	3.7	1.60	32.2	0.86	0.90(.01)	1.7(.1)	2.7(.1)
		2 – 1	152609.746	11.0	15.4	16.1	0.77	0.69(.01)	1.0(.1)	2.6(.1)
		3 – 2	228910.489	22.0	55.7	10.7	0.64	0.26(.01)	0.8(.1)	2.7(.1)
HN ^{13}C	28515	1 – 0	87090.825	4.2	2.4	28.3	0.85	0.29(.01)	1.4(.1)	2.4 (.1)
		3 – 2	261263.310	25.1	82.8	9.4	0.60	0.079(.004)	0.8(.1)	2.3(.1)
H ^{15}NC	28006	1 – 0	88865.715	4.3	2.5	27.8	0.85	0.063(.004)	1.4(.1)	2.7(.1)
		3 – 2	266587.800	25.6	87.9	9.2	0.59	0.026(.005)	1.5(.4)	2.9(.2)

The excellent rms of the data permits detection of emission up to $V_{LSR} \approx -20 \text{ km s}^{-1}$ in the different transitions of HCN. Several transitions of DCN, H ^{13}CN and HC ^{15}N were also detected towards L1157-B1 and their profiles display similar broad linewidths, confirming the shock association (Fig. 2). The detection of bright deuterated emission suggests that despite shock processing, the gas has preserved part of the initial chemical conditions, an effect already pointed out by Codella et al. (2012) and Fontani et al. (2014), who reported the detection of singly deuterated isotopologues of H $_2\text{CO}$, CH $_3\text{OH}$, NH $_3$. A small systematic velocity shift (less than 0.5 km s^{-1}) is measured between the emission peaks of the HCN and HNC line profiles, suggesting they are tracing different regions inside the shock.

We note that the HNC isotopologues (HN ^{12}C , HN ^{13}C , H ^{15}NC) display much weaker lines intensities than the HCN isotopologues. Line intensities and fluxes of the ground state transitions are weaker by one order of magnitude. There is however one exception, which is the case of deuterated isotopologues DNC and DCN, whose peak intensities are similar within a factor of 2.

Following the approach presented in Lefloch et al. (2012), we have fitted the line profiles by an exponential law of the type $\exp(-V/V_0)$, a procedure which is obviously limited by the SNR of the data. In practice, we considered the lower- J transitions of HCN, H ^{13}CN and HNC. The results are displayed in Fig. 6, where the spectra are displayed in a linear-logarithmic scale. The spectral slope of the HCN (H ^{13}CN) line profiles considered can be fitted by an exponential law of the type $\exp(-V/V_0)$, with $V_0 = 3.8 \text{ km s}^{-1}$ ($V_0 = 4.5 \text{ km s}^{-1}$; Fig 6). The similar values obtained for V_0 indicate that we are indeed probing the same gas in the different transitions of the same molecular species. A small deviation with respect to the fit is observed at $V < -10 \text{ km s}^{-1}$ in the HCN $J=1-0$ line

profile. This is probably due to the overlap between the contributions of the different hyperfine satellites. Another possibility would be the presence of spatial gradients of emission across the telescope beam (Benedettini et al. 2013).

The spectral slope V_0 of the HCN line profiles is very similar to that found for the CO emission from the L1157-B1 outflow cavity (component g_2) by (Lefloch et al. 2012), as indicated by the similarity of the fits and the derived exponent values ($V_0 = 4.4 \text{ km s}^{-1}$). This implies that in the velocity range between -20 and -5 km s^{-1} , both species are probing the same gas component. This is consistent with the analysis of the HCN $J=3-2$ spatial distribution obtained with the IRAM 30m telescope at $9.3''$ (Sect. 4.1) and the HCN $J=1-0$ and H ^{13}CN $J=2-1$ with the IRAM interferometer at a few arcsec resolution (Benedettini et al. 2007; Busquet et al. 2017). As can be seen in Fig. 6, the HNC line profiles look very different from those of HCN in a linear-logarithmic scale. The velocity range of the emission is narrower and stops at -10 km s^{-1} , whereas the emission of HCN extends up to -30 km s^{-1} . Quantitatively, the HNC line profiles are well fitted by an exponential function $\exp(-V/V_0)$ with $V_0 = 2.1 \text{ km s}^{-1}$, i.e. a value of V_0 half the value obtained for HCN. This supports the idea that HNC and HCN are tracing different regions. We note that the V_0 value obtained for HNC is actually similar to that found for the CO component g_3 ($V_0 = 2.5 \text{ km s}^{-1}$), which Lefloch et al. (2012) showed to be associated with the L1157-B2 outflow cavity.

In L1157-B1, the HCN line profiles follow an exponential signature $\exp(-V/V_0)$, with the same V_0 value for the rotational transitions $J=1-0$ and $J=3-2$, so that the HCN line intensity ratio $J=3-2/J=1-0$ is almost constant for velocities beyond -6 km s^{-1} (see Fig. 6). Hence, the HCN excitation conditions are essentially independent of velocity, at least in this velocity range. Similar results were previously reported

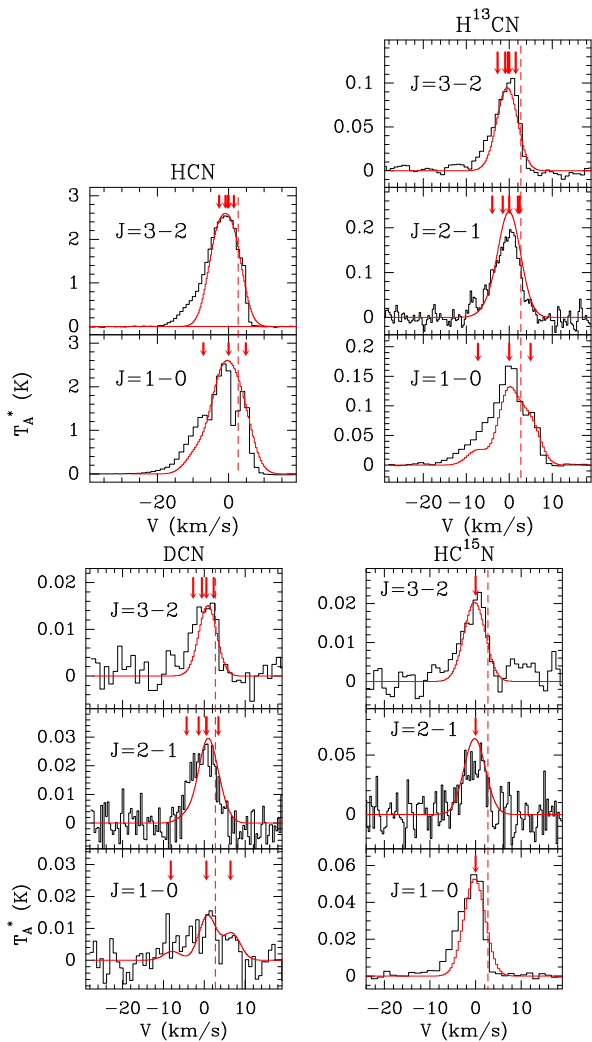


Figure 2. Montage of line profiles of HCN and its rare isotopologues (H^{13}CN , DCN, HC^{15}N), as observed with ASAI towards L1157-B1. Dashed-dotted lines indicate the baseline and rest velocity, $V_{l_{sr}} = +2.7 \text{ km s}^{-1}$. All the spectra are smoothed to a resolution of 1 km s^{-1} . The best fits obtained from the LTE analysis with CASSIS are displayed in red. The velocity axis is associated to the reference frequency given in Table 2. Red arrows mark the location of the hyperfine satellites on the velocity axis, based on the frequencies given in the CASSIS database.

for CO (Lefloch et al. 2012). The similarity of the spectral slopes of HCN and CO between -20 and -5 km s^{-1} implies that the HCN/CO line flux ratio is constant, and since the excitation conditions of both species are independent of velocity in this interval, it means that the relative abundance ratio is also independent of velocity in this velocity range.

The HCN/ H^{13}CN total line flux ratio is ≈ 19 and 42 for the $J=1-0$ and $J=3-2$ transitions, respectively. Assuming similar excitation conditions for both isotopologues and an elemental abundance ratio $^{12}\text{C}/^{13}\text{C}$ equal to 66 (see below), close to the local ISM value (Milam et al. 2005), we then derive line opacities $\tau_{10} \approx 3$ and $\tau_{32} \approx 0.8$ for the $J=1-0$ and $J=3-2$, respectively, i.e. the gas is moderately optically thick. The HNC/ H^{13}CN takes lower values, ≈ 11 and 16 for the $J=1-0$ and $J=3-2$ transitions, respectively, which implies opacities of about 5 and 4 for the main isotopologue, respectively, still

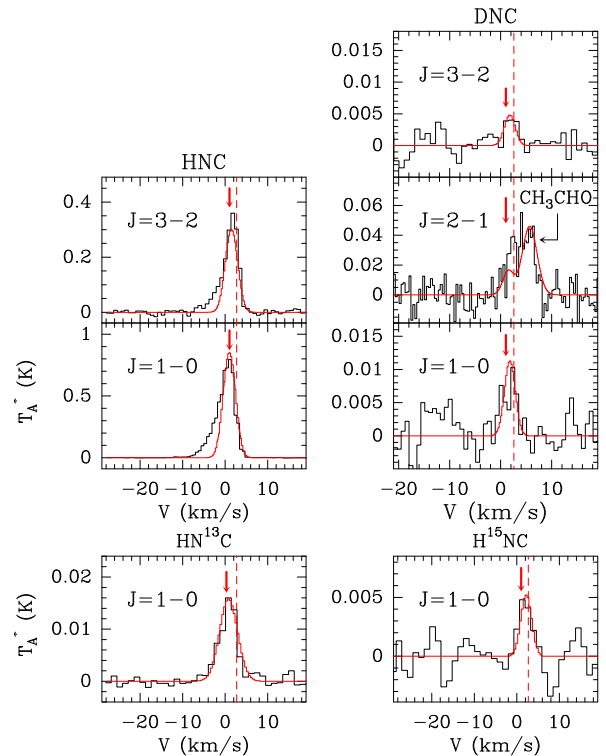


Figure 3. Montage of line profiles of HNC and its rare isotopologues (HN^{13}C , DNC, H^{15}NC), as observed with ASAI towards L1157-B1. Dashed-dotted lines indicate the baseline and rest velocity, $V_{l_{sr}} = +2.7 \text{ km s}^{-1}$. All the spectra are smoothed to a resolution of 1 km s^{-1} . The best fits obtained from the LTE analysis with CASSIS are displayed in red. The velocity axis is associated to the reference frequency given in Table 2. Red arrows mark the location of the hyperfine satellites on the velocity axis, based on the frequencies given in the CASSIS database.

under the assumption of a standard elemental abundance ratio.

4.3 L1157-mm

Emission from the HCN and HNC isotopologues was detected towards the protostellar envelope of L1157-mm. All the detected molecular transitions display narrow linewidths between 0.8 and 1.8 km s^{-1} , as expected for cold and quiescent protostellar gas (Figs. 4–5). This permits identification of the hyperfine satellites, whose emission was hidden otherwise in the outflowing gas at position B1. The signature of the protostellar outflow is detected in the HCN and HNC $J=1-0$ lines, as a broad, low intensity component with a typical linewidth of 5 km s^{-1} .

Overall, comparison of the HCN and HNC isotopologues emission shows that the transitions from same rotational levels display similar intensities for each pair of isomers, as can be seen in Figs. 4–5 (see also Table 4). Since the corresponding line intensity ratios are only weakly dependent on the excitation temperature, this suggests that both isomers and their rare isotopologues should have similar abundances. Note that the situation differs very much from L1157-B1, where much brighter emission is detected in the HCN isotopologues.

The HCN/ H^{13}CN (HNC/ H^{13}C) line flux ratio is 11

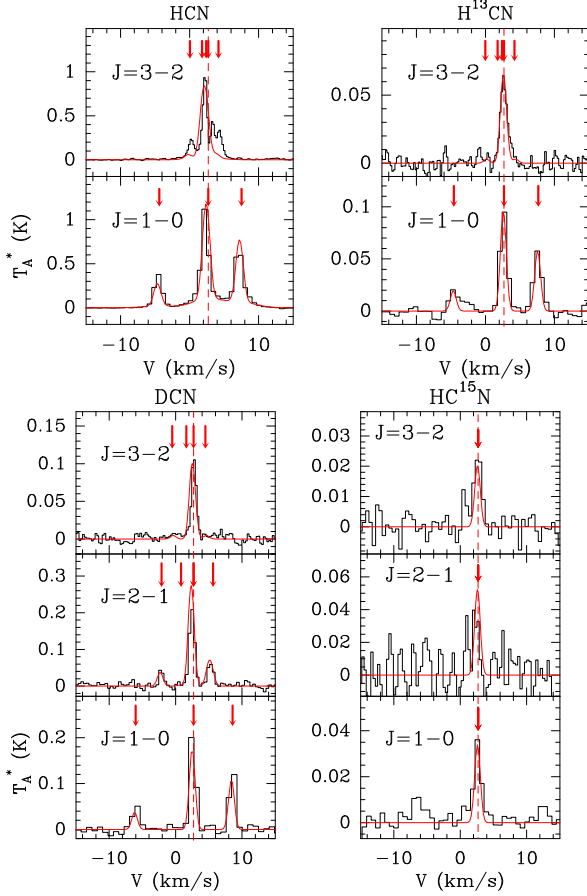


Figure 4. Montage of line profiles of HCN and its rare isotopologues (H^{13}CN , DCN, HC^{15}N), as observed with ASAI towards L1157-mm. Dashed-dotted lines indicate the baseline and rest velocity, $V_{l,sr} = +2.7 \text{ km s}^{-1}$. The best fits obtained from the LTE analysis with CASSIS are displayed in red. The velocity axis is associated to the reference frequency given in Table 2. Red arrows mark the location of the hyperfine satellites on the velocity axis, based on the frequencies given in the CASSIS database.

and 16 (12 and 23) for the $J=1-0$ and $3-2$ transitions, respectively. Adopting a standard elemental abundance ratio $^{12}\text{C}/^{13}\text{C} = 66$, we then derive HCN line optical depths $\tau_{10} \simeq 5.5$ and $\tau_{32} \simeq 2.3$, for the $J=1-0$ and $J=3-2$ transitions, respectively. Similar results are obtained for HNC. Hence, both the HCN and HNC emissions are optically thick. Therefore, we have used the ^{13}C isotopologues to determine the total gas column density of HCN and HNC.

To summarize, a simple comparison of the line intensities of the HCN and HNC isotopologues measured towards L1157-mm suggests that both isomers are present in the pre-shock phase with similar abundances. The pre-shock gas displays hints of isotopic fractionation enrichment, in particular deuteration, which is partially preserved through the shock. A strong differentiation is observed in the shock between HCN and HNC with the emission of the former strongly enhanced over the latter. Analysis of the spectral signature suggests that both isomers are tracing different regions in the shock region.

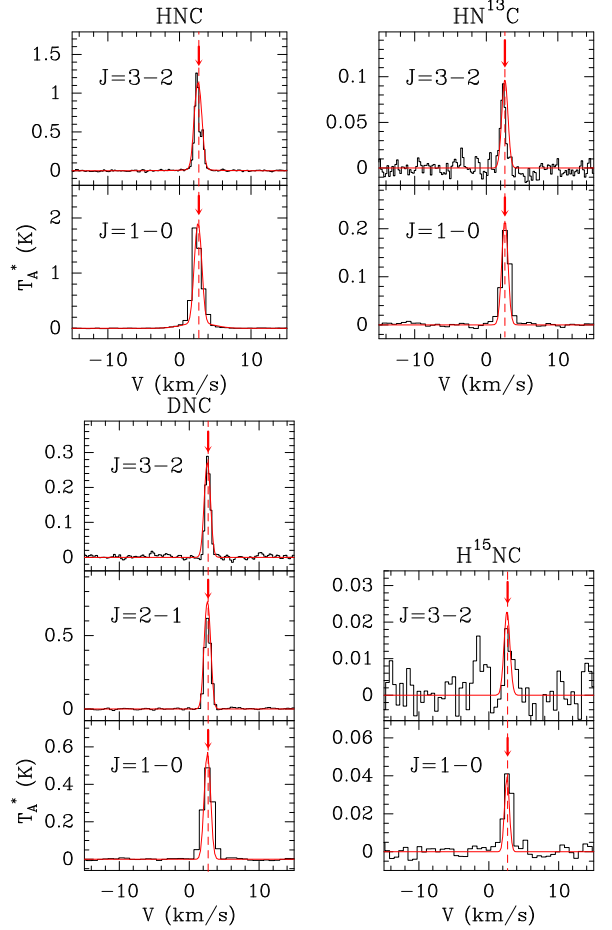


Figure 5. Montage of line profiles of HNC and its rare isotopologues (HN^{13}C , DNC, H^{15}NC), as observed with ASAI towards L1157-mm. Dashed-dotted lines indicate the baseline and rest velocity, $V_{l,sr} = +2.7 \text{ km s}^{-1}$. The best fit obtained from the LTE analysis with CASSIS are displayed in red. The velocity axis is associated to the reference frequency given in Table 2. Red arrows mark the location of the hyperfine satellites on the velocity axis, based on the frequencies given in the CASSIS database.

4.4 Line excitation

The above analysis of the line profiles shows hints of chemical evolution in the passage of the shock. In order to gain more insight on the shock impact on nitrile chemistry, we have first determined the excitation conditions of the different molecular species (excitation temperature, column density). The detection of the rare isotopologues offers an opportunity to constrain directly the evolution of isotopic fractionation through the passage of a protostellar shock. In the case of L1157-mm, rather than a detailed physical and chemical description of the structure of the envelope, our goal here is to determine the relative abundances of these various species, which we take as representative of the chemical composition of the pre-shock gas in the L1157-B1 region.

In order to follow a systematic approach in the molecular abundance determination, we decided to model the line profiles in the approximation of Local Thermodynamical Equi-

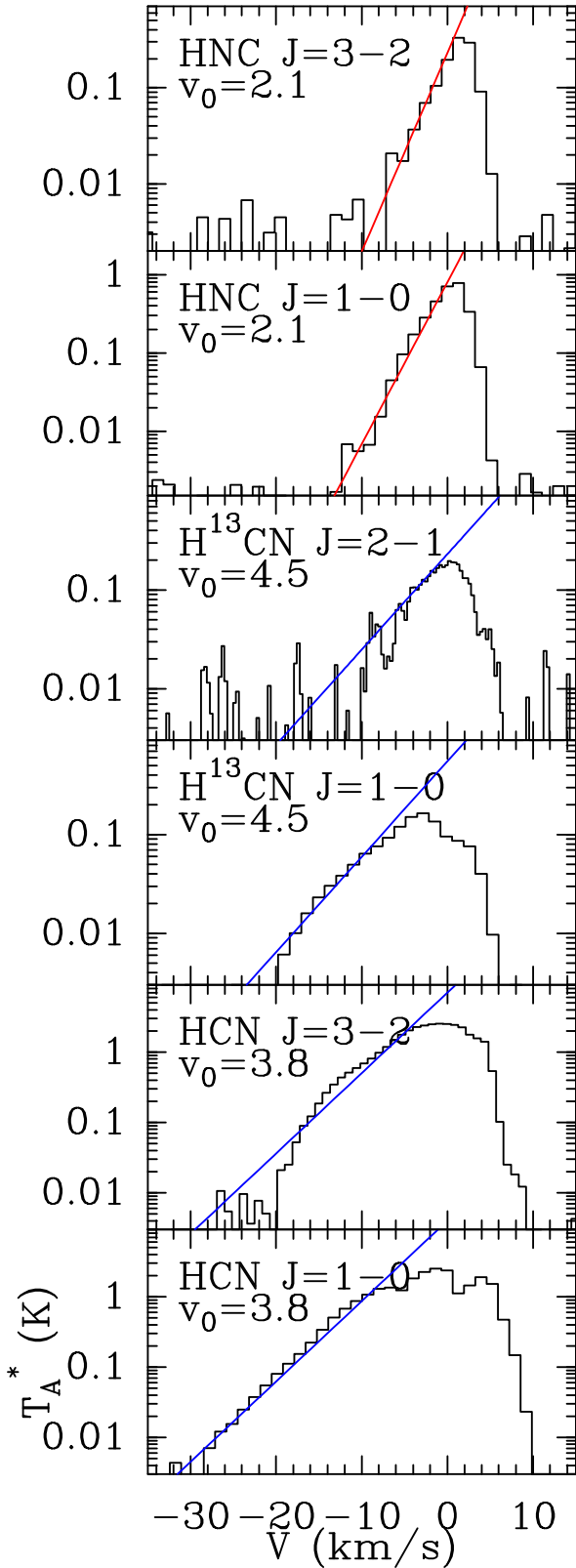


Figure 6. Montage of emission line profiles observed towards L1157-B1 displayed in linear-logarithmic scale, from top to bottom: HNC $J = 3 - 2$, $J = 1 - 0$, H^{13}CN $J = 2 - 1$, $J = 1 - 0$, HCN $J = 3 - 2$, $J = 1 - 0$. In each panel, we have superposed in red (blue) a fit to the spectral slope of the type $T(v) \propto \exp(-V/V_0)$ with $V_0 \simeq 2.0$ (4.0) km s^{-1} , associated with the component g_3 (g_2) of the outflow. The exponent v_0 is given for each transitions in the corresponding panel.

librium (LTE) using CASSIS³ (Vastel et al. 2015). In the case only one transition was detected (HC¹⁵N, HN¹³C in L1157-B1), an excitation temperature of 7 K was adopted, in good agreement with the other rare isotopologues. Line profiles towards L1157-B1 could usually be reproduced with one single Gaussian component, of Full Width at Half Power (FWHP) consistent with our determination of the line parameters (see Table 1). In order to reproduce as accurately as possible the observed line profiles, we made use of the CASSIS private database which takes into account the hyperfine spectroscopic properties of HCN isotopologues. Towards L1157-mm, it was necessary to introduce a second component of broad linewidth (5 km s^{-1}) and low intensity in order to reproduce the outflow signature (see Sect. 4.3).

We have adopted a size of 60'' for the envelope of L1157-mm, a value in good agreement with the size of the envelope observed in N_2H^+ (Tobin et al. 2013). In practice, this value allowed us to best simultaneously reproduce the emission of the various transitions of a given molecular species under the assumption of one single excitation temperature. We have adopted a total gas column density of $2 \times 10^{22} \text{ cm}^{-2}$, based on the H_2 column density maps of the region obtained in the Herschel Gould Belt Survey (HGBS) of nearby star-forming molecular clouds (Di Francesco et al. 2020). We note that this H_2 column density is about a factor of 3 higher than the determination obtained by Mendoza et al. (2018). The latter value ($6 \times 10^{21} \text{ cm}^{-2}$) was derived from the ^{13}CO $J = 1 - 0$ line in the ASAI spectrum of the protostar, adopting a canonical abundance of 1.6×10^{-6} . As a matter of fact, the low gas kinetic temperature ($\sim 10 \text{ K}$) and the relatively high gas density (\sim a few 10^4 cm^{-3}) of the envelope are such that CO is most likely depleted at large scale in the envelope by a factor of a few, as is commonly measured in cold cores (see e.g., Bacmann et al. 2002). Both column density values can be reconciled if CO is moderately depleted by a factor of about 3–4 over the envelope. We have adopted a linewidth of $\sim 1 \text{ km s}^{-1}$ for the line profile modelling in L1157-mm, in agreement with the results of our gaussian fits to the line spectra (see Figs. 4–5 and Table 2).

In the case of L1157-B1, previous observational work showed that the molecular gas emission arises from a region with a typical gaussian size (FWHM) in the range 20'' – 25'' (Gueth, Guilloteau, & Bachiller 1996; Lefloch et al. 2012; Benedettini et al. 2013). This is consistent with the distribution of the HCN $J = 3 - 2$ emission (Fig. 1), which appears extended between the protostar and the B1 shock position. The high- J transitions of the HCN and HNC isotopologues lie in a frequency range for which the main-beam of the telescope is comparable to or smaller than the size of the shock region, as estimated from interferometric observations (see Tables 1–2). For these transitions, the emission can be considered as extended and the main-beam temperature becomes a satisfying approximation to the molecular line brightness temperature. The case of the ground state transitions of the HCN and HNC isotopologues is more complicated for two reasons: first, the telescope beamwidth (HPBW) is comparable to the molecular emission size; second, the typical physical conditions ($n(\text{H}_2) \sim 10^5 \text{ cm}^{-3}$; $T_{kin} = 60 \text{ K} - 90 \text{ K}$) are such than the rotational transitions present in the millimeter bands are

³ <http://cassis.irap.omp.eu/>

subthermally excited. The $J=1-0$ excitation temperature is higher than that of the $J=3-2$ line, as can be checked by a simple calculation using a radiative transfer code in the Large Velocity Gradient approximation, like Madex (Cernicharo et al. 2012). In the LTE approximation, the T_{ex} of the $J=1-0$ line is underestimated by the fitting procedure, and the approximation is no longer very satisfying. However, the approximation of extended, or main-beam averaged, emission compensates for the previous effect, which mainly affects the ground state transitions, as explained above. We found that this approximation yields much better quality LTE fits. The source-averaged column density is then obtained by correcting the fitted (main-beam averaged) column density for the main-beam filling factor.

The results of our LTE analysis (source-averaged column density N , excitation temperature T_{ex}) and the corresponding molecular abundances are summarised in Table 3. Due to the uncertainties in the derivation of the HCN column densities from the ^{12}C isotopologue, we have reported for HCN and HNC the values obtained from the rare ^{13}C isotopologues, adopting an elemental abundance ratio $^{12}\text{C}/^{13}\text{C} = 66$ (see below Sect. 5.1). They are indicated with a (*) in Table 3.

The best fits to the individual line profiles obtained with CASSIS are superimposed in red on the spectra in Figs. 2–5. The error bars on T_{rot} and N were estimated from LTE fits to the line profiles taking into account the absolute flux calibration uncertainties (see Sect. 3.3) and the statistical rms noise. Our column density determinations for HCN and HNC towards L1157-mm and L1157-B1 are in good agreement with those of Bachiller & Pérez-Gutiérrez (1997). Recently, Benedettini et al. (2021) observed the H^{13}CN and HC^{15}N $J=1-0$ line emission at $4''$ resolution toward L1157-B1 using NOEMA, as part of the Large Program SOLIS. Their radiative transfer modelling of both lines yielded $N(\text{H}^{13}\text{CN}) \sim 7 \times 10^{12} \text{ cm}^{-2}$ and $N(\text{HC}^{15}\text{N}) \sim 2 \times 10^{12} \text{ cm}^{-2}$. Our observational determinations are in satisfying agreement with these values (see Table 3).

5 DISCUSSION

In this section, we discuss the properties of the HCN and HNC isotopologues in the pre-shock gas, based on the L1157-mm envelope properties, and their evolution across the shock in L1157-B1. The molecular abundances and line ratios of interest derived towards L1157-B1 and L1157-mm are presented in Table 4. Using the time dependent gas-grain chemical and parametrised shock model UCLCHEM (Holdship et al. 2017) we simulate the pre-shock abundances for the gas and the solid phase, before the arrival of the shock, as well as during and after the shock has passed. We discuss the modelling findings with an emphasis of the behaviour of HCN and HNC.

5.1 $^{12}\text{C}/^{13}\text{C}$ elemental abundance ratio

We have used the detected transitions of HC_3N and its rare ^{13}C isotopologues observed towards L1157-B1 to estimate the elemental abundance ratio $^{12}\text{C}/^{13}\text{C}$ in the L1157 star-forming region. The transitions of the rare isotopologues $J=10-9$, $J=11-10$, $J=12-11$ of H^{13}CCCN , HC^{13}CCN and HCC^{13}CN were presented in Mendoza et al. (2018). The transitions of

same quantum numbers of the different ^{13}C isotopologues are very close in frequency, separated by a few GHz at most. These different transitions were observed simultaneously in the ASAI survey, with the advantage of minimizing the calibration uncertainty, which is then dominated by the rms noise of the spectrum. Mendoza et al. (2018) showed that the emission of all the HC_3N isotopologues detected in the millimeter range is optically thin. Hence, the line flux ratio of the ^{12}C to the sum of the ^{13}C isotopologues is equal to three times the elemental abundance ratio $^{12}\text{C}/^{13}\text{C}$. For the $J=10-9$ and $J=12-11$ transitions, we found $^{12}\text{C}/^{13}\text{C} = 66 \pm 6$. For the $J=11-10$, we discarded the H^{13}CCCN line whose intensity is almost twice as bright as the lines of HC^{13}CCN and HCC^{13}CN , a dissymmetry which is observed only in this transition and not in the $J=10-9$ and $J=12-11$. It then comes $^{12}\text{C}/^{13}\text{C} = 70 \pm 10$, in agreement with the determinations from the $J=10-9$ and $J=12-11$. This direct observational determination of the $^{12}\text{C}/^{13}\text{C}$ ratio in the L1157 star forming region is actually very close to the elemental abundance ratio in the local ISM, equal to 68, (Lucas & Liszt 1998; Milam et al. 2005) and the value assumed in our previous works (see Sect. 2).

Both the $\text{HCN}/\text{H}^{13}\text{CN}$ and $\text{HNC}/\text{HN}^{13}\text{C}$ column density ratios display values well below the canonical $^{12}\text{C}/^{13}\text{C}$ elemental abundance ratio in the ISM, equal to 68 (Lucas & Liszt 1998; Milam et al. 2005). In particular, a low $^{12}\text{C}/^{13}\text{C}$ ratio of $\approx 11 \pm 4$ is measured towards towards the cold protostellar core L1157-mm. We first note that models of ^{13}C isotopic fractionation in cold cores lead to an opposite effect, i.e. a $\text{H}^{12}\text{CN}/\text{H}^{13}\text{CN}$ ($\text{HN}^{12}\text{C}/\text{HN}^{13}\text{C}$) ratio higher than the $^{12}\text{C}/^{13}\text{C}$ elemental abundance ratio (Langer et al. 1984; Roueff et al. 2015). A similar effect was reported by Daniel et al. (2013) in their detailed study of nitrogen hydrides and nitriles in the Class 0 protostellar core Barnard 1. The authors concluded that the apparently low $\text{H}^{12}\text{CN}/\text{H}^{13}\text{CN}$ ratio was most likely a bias caused by the simple hypothesis made in the radiative transfer modelling of the line excitation and the geometry of the astrophysical source. In particular, the excitation of the HCN and HNC ground-state transitions also depends on the extended, low-density gas surrounding the dense core, so that a detailed multi-dimensional radiative transfer model of the source taking into account the full density and velocity fields is needed in order to properly reproduce the line profiles.

From what precedes, we conclude that there is no convincing evidence for $^{12}\text{C}/^{13}\text{C}$ fractionation of HCN/HNC in the star-forming region. Because of the high optical depth of the HCN and HNC lines, which cast some uncertainties on the determination of the HCN and HNC total column densities, these were obtained from the column densities of their optically thin ^{13}C isotopologues and taking into account our estimate of the elemental abundance $^{12}\text{C}/^{13}\text{C} = 66 \pm 6$.

5.2 Isomers

In the pre-shock gas, we find similar molecular abundances of HCN and HNC, close to 2×10^{-9} , and a relative abundance ratio $\text{HCN}/\text{HNC} = \text{H}^{13}\text{CN}/\text{HN}^{13}\text{C} = 1.1 \pm 0.4$. These values were derived from a direct to the L1157-mm line profiles with CASSIS, taking into account the line optical depths. Similar results were obtained when considering the rare isotopologues ratios $\text{DCN}/\text{DNC} (= 1.1 \pm 0.4)$ and $\text{HC}^{15}\text{N}/\text{H}^{15}\text{NC}$

Table 3. Excitation conditions (source-averaged column density N , rotational temperature T_{rot} , abundance X) of the HCN and HNC isotopologues detected towards L1157-B1 and L1157-mm. Emission sizes of $60''$ and $20''$ were adopted for L1157-mm and L1157-B1, respectively. A total H_2 column density of $2 \times 10^{22} \text{ cm}^{-2}$ and $2 \times 10^{21} \text{ cm}^{-2}$ was adopted for L1157-mm and L1157-B1, respectively (Lefloch et al. 2012; Di Francesco et al. 2020), in order to compute the molecular abundances. We follow the convention $a(b) = a \times 10^b$. The HCN and HNC parameters are marked with a * to indicate that they were obtained from the ^{13}C isotopologue, adopting an abundance ratio $^{12}\text{C}/^{13}\text{C} = 66$ (see Sect. 5.1).

Species	L1157-mm			L1157-B1		
	T_{rot} (K)	N (cm^{-2})	X	T_{rot} (K)	N (cm^{-2})	X
Main Body						
HCN(*)	$6.7_{-0.5}^{+0.7}$	$4.6_{-0.6}^{+0.6}(13)$	$2.3_{-0.3}^{+0.3}(-9)$	$7.2_{-1.0}^{+0.6}$	$6.6_{-0.6}^{+1.1}(14)$	$3.3_{-0.3}^{+0.6}(-7)$
H^{13}CN	$6.7_{-0.5}^{+0.7}$	$7.0_{-1.0}^{+1.0}(11)$	$3.5_{-0.5}^{+0.5}(-11)$	$7.2_{-1.0}^{+0.6}$	$1.0_{-0.1}^{+0.4}(13)$	$5.0_{-1.0}^{+2.0}(-9)$
DCN	$4.9_{-0.2}^{+0.2}$	$2.8_{-0.3}^{+0.5}(12)$	$1.4_{-0.2}^{+0.3}(-10)$	$6.5_{-0.5}^{+0.5}$	$2.1_{-0.5}^{+0.5}(12)$	$1.1_{-0.3}^{+0.2}(-9)$
HC^{15}N	$7.7_{-0.4}^{+0.5}$	$1.2_{-0.2}^{+0.3}(11)$	$0.7_{-0.1}^{+0.1}(-11)$	$6.8_{-0.5}^{+0.4}$	$2.0_{-0.3}^{+0.5}(12)$	$1.0_{-0.2}^{+0.3}(-9)$
Outflow component						
HNC(*)	$6.8_{-0.3}^{+0.3}$	$4.2_{-0.5}^{+0.8}(13)$	$2.1_{-0.3}^{+0.4}(-9)$	$7.0_{-1.5}^{+1.3}$	$3.5_{-0.6}^{+0.3}(13)$	$1.7_{-0.2}^{+0.2}(-8)$
HN^{13}C	$6.8_{-0.3}^{+0.3}$	$6.3_{-0.7}^{+1.2}(11)$	$3.2_{-0.4}^{+0.6}(-11)$	$7.0_{-1.7}^{+3.0}$	$5.3_{-0.6}^{+0.6}(11)$	$2.6_{-0.2}^{+0.3}(-10)$
DNC	$5.7_{-0.2}^{+0.3}$	$2.5_{-0.3}^{+0.5}(12)$	$1.3_{-0.2}^{+0.2}(-10)$	$6.0_{-2.0}^{+2.0}$	$3.2_{-1.4}^{+1.8}(11)$	$1.6_{-0.7}^{+0.9}(-10)$
H^{15}NC	$7.7_{-0.6}^{+0.5}$	$1.3_{-0.4}^{+0.3}(11)$	$0.7_{-0.3}^{+0.1}(-11)$	$7.0_{-1.5}^{+3.0}$	$1.8_{-0.6}^{+0.7}(11)$	$8.5_{-2.5}^{+3.5}(-11)$
HCN	5.0	4.0(12)	2.4(-8)	-	-	-
HNC	5.0	1.5(12)	0.9(-8)	-	-	-

Table 4. Isomer and isotopic abundance ratios of HCN and HNC in L1157-mm and L1157-B1. For each source, the ratios are computed adopting a canonical elemental $^{12}\text{C}/^{13}\text{C}$ abundance ratio of 66 (see also Sect. 5.1).

	L1157-mm	L1157-B1
HCN/H	$1.2_{-0.2}^{+0.2}(-9)$	$1.7_{-0.2}^{+0.4}(-7)$
HCN/ H^{13}CN	66	66
HCN/ HC^{15}N	383 ± 145	330 ± 110
HCN/DCN	16 ± 5	314 ± 110
$\text{H}^{13}\text{CN}/\text{HC}^{15}\text{N}$	5.8 ± 2.2	5.0 ± 2.5
<hr/>		
HNC/ HN^{13}C	66	66
HNC/ H^{15}NC	323 ± 160	194 ± 100
HNC/DNC	17 ± 7	109 ± 70
$\text{HN}^{13}\text{C}/\text{H}^{15}\text{NC}$	4.8 ± 2.4	3.0 ± 1.5
<hr/>		
HCN/HNC	1.1 ± 0.4	19 ± 6
$\text{H}^{13}\text{CN}/\text{HN}^{13}\text{C}$	1.1 ± 0.4	19 ± 8
$\text{HC}^{15}\text{N}/\text{H}^{15}\text{NC}$	0.9 ± 0.5	11 ± 6
DCN/DNC	1.1 ± 0.4	6 ± 5

(= 0.9 ± 0.5). The consistency between these values determined independently, makes us confident about the reliability of our method. The molecular abundances of HCN and HNC are similar to those reported in previous surveys of dark cloud cores and low-mass star forming cores (e.g., Hirota et al. 1998; Hily-Blant et al. 2010; Daniel et al. 2013), suggesting that the envelope of L1157-mm has kept memory

of the prestellar phase. Hirota et al. (1998) pointed out that since no difference is observed between the values measured in prestellar and protostellar cores, the evaporation of HCN and HNC from dust grains does not contribute significantly to the observed emission in the cold gas.

Comparison of the molecular abundances of L1157-mm (pre-shock gas) and the shocked region L1157-B1 (see Table 3) shows that the HCN and HNC isomers behave differently across the shock. First, we observe an increase in the abundance of all the HCN isotopologues. The rare H^{13}CN and HC^{15}N (and HCN) abundances increase by a similar factor of 140 while the DCN abundance increases much less, by a factor ≈ 8 . Unlike HCN, the abundances of all the HNC isotopologues vary by a much smaller factor of a few (≈ 8 – 12). The abundance DNC remains almost unchanged. Overall, the abundances of the HNC isotopologues seem barely affected by the passage of the shock. From a ratio HCN/HNC with an initial value of 1 in the quiescent gas, it is now 19 ± 6 in the post-shocked gas. The isomer ratio displays values in the range 11–19 which are consistent, within the uncertainties, for $\text{H}^{13}\text{CN}/\text{HN}^{13}\text{C}$ and $\text{HC}^{15}\text{N}/\text{H}^{15}\text{NC}$. The deuterated isomers seem to behave differently with a much lower increase of the DCN/DNC ratio.

In the protostellar outflow near L1157-mm, the high sensitivity of the ASAI data has permitted detection of the emission of the ground state transition of HCN and HNC. This emission can be modelled as a broad component of $\approx 5 \text{ km s}^{-1}$ and low excitation (Table 3). Interestingly, the HCN/HNC abundance (column density) ratio is close to 3, suggesting

that the relative abundance of HCN with respect to HNC is enhanced in the formation of the outflow.

5.3 Isotopic fractionation

5.3.1 Deuterium

It is well established that strong Deuterium enrichment takes place in molecular material of cold, dark and prestellar cores (Caselli & Ceccarelli 2012). The first evidence of molecular deuteration in L1157-mm were brought by Bachiller & Pérez-Gutiérrez (1997), with the detection of the deuterated forms of HCN and HCO^+ , and a molecular D/H ratio of 0.018 in the cold envelope. Our own determinations, which are based on the modelling of a larger number of rotational transitions, yield a somewhat higher D/H ratio 0.06 ± 0.02 for both HCN and HNC, in rough agreement with Bachiller & Pérez-Gutiérrez (1997).

At the passage of the shock, the DCN abundance increases by a factor 7 whereas DNC remains unchanged. Overall, the magnitude of these variations remain small in front of those affecting the main isotopologues and indicate that, at first order, the abundances of these deuterated species are only moderately affected by the passage of the shock, with a different behaviour for DCN and DNC. As for L1157-B1, previous estimates of the DCN/HCN ratio were obtained by Codella et al. (2012), based on a reduced number of transitions of H^{13}CN and DCN. Our present determination of $(3.1 \pm 1.0) \times 10^{-3}$ is consistent with their previous estimate $\text{D/H} = (0.5\text{--}3) \times 10^{-3}$. More recently, Busquet et al. (2017) reported similar deuterium fractionation ratios ($\approx 4.0 \times 10^{-3}$) in the small-scale structures detected in the bow-shock, with no significant spatial variation. Our unbiased analysis of the deuterated isomers confirms that the molecular D/H ratio decreases across the shock and it allows us to quantify the magnitude of the effect: a factor 26 and 8 for HCN and HNC, respectively.

The behaviour of DCN/HCN in the B1 shock position has already been studied in detail by Busquet et al. (2017) based on high-angular resolution observations of H^{13}CN $J=2-1$ and DCN $J=2-1$ combined with the UCLCHEM code and adopting the deuterated network of Esplughes et al. (2013). The results from the model show that the DCN/HCN abundance ratio varies with the passage of the shock. The observed DCN/HCN ratio is well reproduced by the model in the post-shock gas material, around $t \sim 1000$ yr, when the gas has cooled down to ~ 80 K. The morphology of DCN together with the shock model suggests that gas-phase chemistry is the dominant mechanism producing the widespread DCN emission, which dominates in the head of the bow-shock.

5.3.2 Nitrogen

We do not find any evidence of ^{15}N isotopic fractionation. Towards L1157-mm, we obtain $^{13}\text{C}/^{15}\text{N}$ ratios of 5.8 ± 2.2 and 4.8 ± 2.4 for HCN and HNC, respectively. Both values agree within the uncertainties, and they are also consistent with the canonical elemental abundance ratio of 6.5 in the local ISM (Milam et al. 2005; Marty et al. 2011). This translates into elemental abundance ratios $\text{HC}^{14}\text{N}/\text{HC}^{15}\text{N}$ of 380 ± 145 and $\text{H}^{14}\text{NC}/\text{H}^{15}\text{NC} \approx 320 \pm 160$ towards L1157-mm. Both values are consistent with the solar value in the local ISM (440;

Marty et al. 2011). Towards L1157-B1, the $\text{H}^{13}\text{CN}/\text{HC}^{15}\text{N}$ is almost unchanged (5.0 ± 2.5) whereas the $\text{HN}^{13}\text{C}/\text{H}^{15}\text{NC}$ takes a lower value (3.0 ± 1.5), but still in rough agreement with the canonical value.

At the passage of the shock, the rare ^{15}N isotopologues display the same behaviour as HCN and HNC, as can be seen in Table 3. The H^{13}CN and HC^{15}N abundances in L1157-B1 increase by a factor of 140 with respect to the values measured towards L1157-mm. By comparison, HN^{13}C and H^{15}NC increase by a factor (~ 8). Overall, these variations remain very modest. Therefore, our analysis brings *direct* observational evidence that the $^{14}\text{N}/^{15}\text{N}$ elemental abundance ratio is not affected by the passage of the shock.

Recently, Benedettini et al. (2021) have investigated the $^{14}\text{N}/^{15}\text{N}$ fractionation of HCN in the two shocked clumps, B1 and B0, of the L1157 outflow using the NOEMA interferometer at $\sim 3''$ resolution, and obtained $^{14}\text{N}/^{15}\text{N} = 340 \pm 70$, in good agreement with our determination (see Table 4). Based on the chemical shock modelling, Benedettini et al. (2021) conclude that the rich gas chemistry activated by the passage of the shock does not affect the $^{14}\text{N}/^{15}\text{N}$ ratio with respect to the local ISM value. This conclusion is observationally confirmed by our results.

5.4 Chemical modelling

As discussed in the previous section, a simple qualitative analysis of the spectral line signature shows evidence for the shock impact on Nitrile gas composition. The HCN isotopologue abundances have been deeply affected in the shock, increasing by more than one order of magnitude, whereas the HNC isotopologues seem to have barely noticed its presence.

Our goal is to identify the chemical processes responsible for the HCN and HNC gas phase abundances in L1157-B1, before and during the passage of the shock. The different studies of H_2O , NH_3 , CH_3OH , H_2CO , HC_3N , H_2S , NO , PN , PO by our group (Viti et al. 2011; Lefloch et al. 2016; Holdship et al. 2017; Benedettini et al. 2013; Mendoza et al. 2018; Benedettini et al. 2013; Busquet et al. 2017; Codella et al. 2018; Benedettini et al. 2021) have led to a coherent picture of L1157-B1, in which the detected molecular emission is accounted for by a C-type shock propagating into a pre-shock medium of density $n(\text{H}_2) \simeq 5 \times 10^4 \text{ cm}^{-3}$ and shock velocity V_s in the range $20 - 40 \text{ km s}^{-1}$. We have adopted the same methodological approach as in our previous studies, and have used the public time dependent gas-grain chemical and parametrised shock model UCLCHEM code (Holdship et al. 2017) to follow the evolution of the gas phase composition across a protostellar shock, adopting a cosmic ray ionization rate of $\zeta = 1.3 \times 10^{-16} \text{ s}^{-1}$, in agreement with Podio et al. (2014). We refer the reader to the release paper of UCLCHEM for a detailed description of this public code (Holdship et al. 2017). Briefly, the code is run in two phases, where Phase I forms a dense core out of a diffuse, essentially atomic medium. An initial density of 100 cm^{-3} is adopted here, for the diffuse medium. During this phase, gas-phase chemistry, freezing on to dust particles and subsequent surface processing, occurs.

We have considered two cases, depending on the duration on the pre-shock phase. In the first case ("short" duration), one considers the extreme case where the jet impacts the cloud as soon as the latter is formed; in the second case

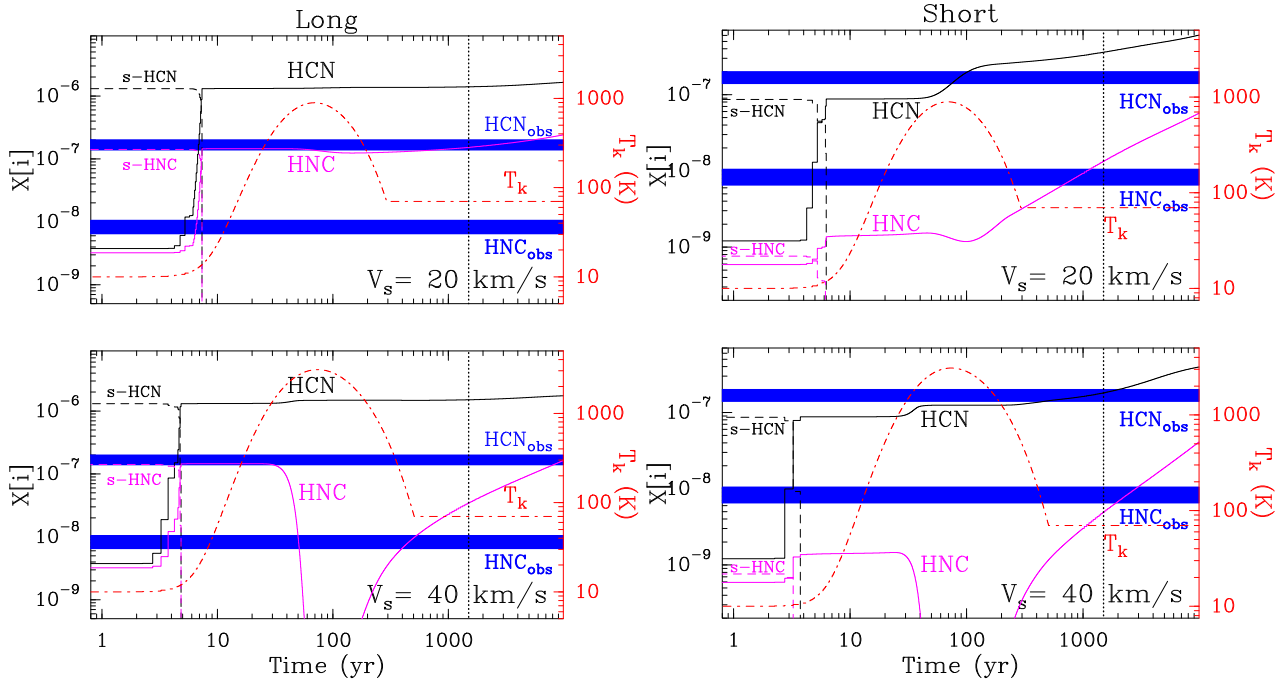


Figure 7. Time-dependent fractional abundances (with respect to the number of hydrogen nuclei) of HCN and HNC across a protostellar shock propagating at $V = 20 \text{ km s}^{-1}$ (top) and $V = 40 \text{ km s}^{-1}$ (bottom), respectively. (*left*) “Long” pre-shock phase. (*right*) “Short” pre-shock phase. The abundances of HCN (black) and HNC (magenta) in the gas phase and on the dust grains are indicated by the solid and the dashed curve, respectively. The temperature profile across the shock is drawn with the red dash-dot curve. The fractional abundances measured towards L1157-B1 and their uncertainties are indicated by the blue rectangles. The vertical dotted line at $t = 1500 \text{ yr}$ indicates the estimated age of the shock by Podio et al. (2016).

(long” duration), one begins with a situation where 5 million years pass after the cloud is formed and before the shock arrives. The density at the end of Phase I is a free parameter, called from now on the pre-shock density. The second phase computes the time-dependent chemical evolution of the gas and dust during the passage of a magnetized (C-type) shock whose structure is at steady-state.

Figure 7 presents the variations of the HCN and HNC molecular abundances *relative to the number of H nuclei* as a function of time through the shock, as predicted by our model for the shock velocities $V_s = 20 \text{ km s}^{-1}$ (top) and $V_s = 40 \text{ km s}^{-1}$ (bottom) and for the durations of the pre-shock phase, long (left) and short (right). The HCN (HNC) abundance in the gas and the solid phase are drawn in solid and dotted black (magenta), respectively. In this figure, the shock is propagating to the left. Since the shock is propagating at steady state, the time variations of the different physical or chemical parameters (temperature, density, abundances) can simply be converted into space variations, via the relation $z = V_s \times t$, hence giving access to the shock structure itself. The observational determinations of the gas phase abundances of HCN and HNC and their uncertainties are indicated by the dark blue rectangles.

5.4.1 Pre-shock phase

Our modelling of the pre-shock phase is consistent with the physical and chemical conditions in the envelope of L1157-mm, i.e., cold gas at 10 K of moderate density ($n(\text{H}_2) = 10^5 \text{ cm}^{-3}$), for which we determined an abundance of $1.2 \times$

10^{-9} and 1.1×10^{-9} for HCN and HNC, respectively, relative to H. The key observational constraint here is that the abundances of HCN and HNC in the gas phase are similar. As can be seen in Fig. 7, our chemical modelling succeeds in reproducing similar gas phase abundances for HCN and HNC in the pre-shock phase. The HCN/HNC ratio barely varies between the long duration (~ 1) and the short duration scenario (~ 2). Both scenarios also predict correct gas phase abundances relative to H, of the order of 10^{-9} (Table 3). The short duration scenario predicts gas phase abundances in slightly better agreement with our observational determinations, within the observational uncertainties. The “long” duration scenario predicts abundances higher by a factor of 3. The gas phase abundances of the rare isotopologues are also in good agreement with our observational determinations and with the absence of ^{13}C and ^{15}N fractionation, as discussed above in Sect. 5.3.

In the gas phase, HNC and HCN are efficiently produced by the dissociative recombination (DR) of HCNH^+ with a branching ratio ≈ 1 (Herbst et al. 2000; Mendes et al. 2012):



Several other routes involving neutral-neutral reactions can substantially contribute to the formation of HCN, especially at higher densities (and hence at later times). The dominant route of “destruction” for both species is freeze-out on the dust grains.

We show in Fig. 7 (in magenta dashed) the abundances of HCN and HNC on the dust grains (respectively s-HCN and s-HNC). The main difference between the short and the long duration Phase 1 models lies in fact in the solid HCN/HNC

ratio, whereby the latter model predicts a ratio of ~ 10 while the former a ratio of more than 100. This is probably due to the very efficient formation route for HNC in the gas phase, which then readily freezes out. On the surface of grains, HCN can also continue to form via the efficient hydrogenation of CN, while HNC is not produced nor efficiently destroyed on the grains. This explains the larger ratio of solid HCN/HNC compared to the gas phase HCN/HNC. Therefore, the duration of the pre-shock phase has a marked impact on the HCN and HNC abundance in the solid phase.

5.4.2 Shock impact

In the models with $V_s = 20 \text{ km s}^{-1}$ (top right and left panels in Fig. 7), the shock impact on the HCN and HNC abundances is essentially the same. In the magnetic precursor region, where ions and neutrals are kinematically decoupled, all the material stored at the surface of the dust grains is sputtered and released into the gas phase. This leads to a quick increase of both the HCN and HNC abundances in the gas phase in a few years. Therefore, in the early years, the gas phase abundance of HCN and HNC is mainly determined by the abundance of both species on the dust grains and, at later times, by the different pre-shock gas composition between the long and short Phase I models, as well as by temperature-dependent gas-phase chemistry. The main differences between the long-duration and the short-duration scenarios are the late time behaviours of HCN and HNC, where both increase, in the latter case, much more sharply. The reactions that seem to contribute to these increases are the two neutral-neutral reactions of molecular H_2 with CN (for HCN) and of atomic N with CH_2 (for HNC). A full chemical analysis of this behaviour is beyond the scope of this work, especially as the age of L1157-B1 is estimated to be $\sim 1500 \text{ yr}$ (Podio et al. 2016) but the shorter Phase I duration certainly implies a richer gas phase at the beginning of Phase 2, and hence more abundant nitrogen and CN. This is because of a less effective freeze out during Phase I which would have not only depleted these two species but also hydrogenated them into NH_3 and HCN respectively.

The models with higher shock velocities ($V_s = 40 \text{ km s}^{-1}$) and hence higher maximum temperatures (see bottom panels in Fig. 7), display qualitatively similar evolution for HCN among the two models. Quantitatively, the "short" duration scenario predicts HCN and HNC abundances both in agreement with our observational determinations for time $t \simeq 2000 \text{ yr}$, which is also consistent with the estimated age of B1 ($\sim 1500 \text{ yr}$; Podio et al. (2016)). On the contrary, the "long" duration scenario results into an overabundance of HCN (HNC) in the shocked gas by a factor of 10 (5) with respect to our estimates, so that the HCN abundance remains essentially constant with time. In both the "long" and the "short" duration scenarios, the HNC abundance suddenly drops to values of a few 10^{-11} when the temperature rises above a threshold value of $\approx 2000 \text{ K}$. This is probably due to the endothermic reaction $\text{C}^+ + \text{HNC}$ which only becomes efficient at a temperature above 2000 K .

Therefore, our modelling favors a scenario with a "short" duration pre-shock phase and a shock propagating at $V_s = 40 \text{ km s}^{-1}$ into pre-density gas $n(\text{H}_2) = 5 \times 10^4 \text{ cm}^{-3}$. It successfully accounts quantitatively for the dramatic increase of HCN abundance with respect to HNC on timescales con-

sistent with the age of the shock. The dramatic increase of HCN/HNC mainly appears as an effect of grain sputtering, which is already efficient in low velocity shocks ($V_s = 20 \text{ km s}^{-1}$). This could explain why the HCN and HNC emission is so extended along the outflow, while other species, like e.g. NH_2CHO , require more stringent shock conditions to be formed (Codella et al. 2017). We note that these results are fully consistent with our previous studies of L1157-B1.

6 CONCLUSIONS

Using the IRAM 30m telescope in the framework of ASAI, we have carried out a comprehensive observational study of the HCN/HNC isotopologues in the protostellar shock region L1157-B1.

Based on the observations of the envelope of the protostar L1157-mm, we find that the abundances of the rare HCN/HNC isotopologues in the pre-shock gas are similar to those found in cold dark and prestellar cores. We find a ratio HCN/HNC close to unity for all rare isotopologues and we derive an elemental abundance ratio $^{14}\text{N}/^{15}\text{N}$ close to its elemental value in the ISM. There is no evidence of elemental fractionation, except for Deuterium.

The impact of the shock is characterized by a strong increase of the HCN/HNC abundance ratio and of the HCN abundance relative to H_2 . The ^{13}C and ^{15}N isotopologues display the same qualitative and quantitative behaviour as the main isotopologues, i.e. the elemental abundance ratios remain unchanged in the passage of the shock.

A chemical modelling using UCLCHEM successfully accounts for the properties of HCN/HNC in the gas phase and their evolution in the shock. A very good agreement with the observations is obtained for a steady-state C-shock propagating with velocity $V_s = 40 \text{ km s}^{-1}$ into a pre-shock medium of density $n(\text{H}) = 10^5 \text{ cm}^{-3}$ at a time ($\sim 2000 \text{ yr}$) reasonably consistent with the age of the shock as estimated by Podio et al. (2016). These results agree with our previous UCLCHEM studies on the chemical composition of L1157-B1 (Viti et al. 2011; Lefloch et al. 2016; Holdship et al. 2017; Benedettini et al. 2013; Mendoza et al. 2018; Benedettini et al. 2013; Busquet et al. 2017; Codella et al. 2018; Benedettini et al. 2021).

The HCN/HNC chemical evolution appears to be tightly connected to the history and the composition of the pre-shock phase. In the case of L1157-B1, it is mainly driven by grain sputtering, a process also efficient in lower velocity shocks (20 km s^{-1}). We propose this could explain the wide spatial extent of the HCN and HNC emissions in the L1157-B1 outflow, while other species (e.g. NH_2CHO) require more stringent shock conditions to be formed.

DATA AVAILABILITY

The ASAI data are publicly available under the IRAM Data Archive webpage at <https://www.iram.fr/ILPA/LP007/>. The other, complementary data underlying this article will be shared on reasonable request to the corresponding author.

ACKNOWLEDGEMENTS

Based on observations carried out as part of the Large Program ASAI (project number 012-12) with the IRAM 30m telescope. IRAM is supported by INSU/CNRS (France), MPG (Germany) and IGN (Spain). This work was supported by : (i) a grant from LabEx Osug@2020 (Investissements d’avenir - ANR10LABX56), by the French National Research Agency in the framework of the Investissements d’Avenir program (ANR-15-IDEX-02), through the funding of the "Origin of Life" project of the Univ. Grenoble-Alpes; (ii) the ERC Horizon 2020 research and innovation programme "The Dawn of Organic Chemistry" (DOC), grant agreement No 741002; (iii) the ERC Horizon 2020 ITN Project "Astro-Chemistry Origins" (ACO), grant agreement No 811312. SV acknowledges the European Research Council (ERC) Advanced Grant MOPPEX 833460 E.M. and JL acknowledge support from the Brazilian agency FAPESP (grant 2014/22095-6 and 2015/22254-0). G.B. is supported by the State Agency for Research (AEI) of the Spanish MCIU through the AYA2017-84390-C2-2-R grant.

REFERENCES

- Bachiller, R., & Pérez-Gutiérrez, M. 1997, *ApJ*, 487, L93
 Bachiller, R., Pérez-Gutiérrez, M., Kumar, M. S. N., et al. 2001, *A&A*, 372, 899
 Bacmann, A., Lefloch, B., Ceccarelli, C., et al. 2002, *A&A*, 389, L6
 Benedettini, M., Viti, S., Codella, C., et al. 2007, *MNRAS*, 381, 1127
 Benedettini, M., Busquet, G., Lefloch, B., et al. 2012, *A&A*, 539, L3
 Benedettini, M., Viti, S., Codella, C., et al. 2013, *MNRAS*, 436, 179
 Benedettini, M., Viti, S., Codella, C., et al. 2021, *A&A*, 645, 91
 Bhattacharya, B. N. & Gordy, W. 1960, *PhRv*, 119, 144
 Busquet, G., Lefloch, B., Benedettini, M., et al., 2014, *A&A*, 561, A120
 Busquet, G., Fontani, F., Viti, S., et al., 2017, *A&A*, 604, A20
 Caselli, P., & Ceccarelli, C. 2012, *A&ARv*, 20, 56
 Codella, C., Lefloch, B., Ceccarelli, C., et al. 2010, *A&A*, 518, L112
 Codella, C., Ceccarelli, C., Lefloch, B. et al. 2012, *ApJ*, 757, L9
 Codella, C., Ceccarelli, C., Caselli, P. et al. 2017, *A&A*, 605, L3
 Codella, C., Viti, S., Lefloch, B., et al. 2018, *MNRAS*, 474, 5694
 Daniel, F., Gérin, M., Roueff, E. et al. 2013, *A&A*, 560, 3
 Di Francesco, J., Keown, J., Fallscheer, C. et al. 2020, *ApJ*, 904, 172
 Dzib, S. A., Loinard, L., Ortiz-León, G. N. et al. 2018, *ApJ*, 867, 151
 Esplugues, G.B., Cernicharo, J., Viti, S., et al. 2013, *A&A*, 559, 51
 Fontani, F., Codella, C., Ceccarelli, C., et al., 2014, *ApJ*, 788, L43
 Gómez-Ruiz, A. I., Codella, C., Lefloch, B., et al., 2015, *MNRAS*, 446, 3346
 Gueth, F., Guilloteau, S., & Bachiller, R. 1996, *A&A*, 307, 891
 Gueth, F., Guilloteau, S., Dutrey, A., & Bachiller, R. 1997, *A&A*, 323, 943
 Gueth, F., Guilloteau, S., Bachiller, R. 1998, *A&A*, 333, 287
 Gusdorf, A., Cabrit, S., Flower, D. R., Pineau Des Forêts, G. 2008a, *A&A*, 482, 809
 Gusdorf, A., Pineau Des Forêts, G., Cabrit, S., Flower, D. R. 2008b, *A&A*, 490, 695
 Hacar, A., Bosman, A.D., van Dishoeck, E.F., 2020, *A&A*, 635, 4
 Herbst, E., Terzieva, R., & Talbi, D., 2000, *MNRAS*, 311, 869
 Hily-Blant, P., Walmsley, M., Pineau des Forets, G, Flower, D., 2010, *A&A* 513, 41
 Hirota, T., Yamamoto, S., Mikami, H., Ohishi, M. 1998, *ApJ*, 503, 717
 Holdship, J., Viti, S., Jiménez-Serra, I., et al., 2017, *AJ*, 154, 38
 Irvine, W. M. & Schloerb, F. P. 1984, *ApJ*, 282, 516
 Langer, W.D., Graedel, T.E., Freerking, M.A., Armentrout, P.B., 1984, *ApJ*, 277, 581
 Lefloch, B., Cabrit, S., Codella, C., et al. 2010, *A&A*, 518, L113
 Lefloch, B., Cabrit, S., Busquet, G., et al. 2012, *ApJL*, 757, L25
 Lefloch, B., Gusdorf, A., Codella, C., et al. 2015, *A&A*, 581, A4
 Lefloch, B., Vastel, C., Viti, S., et al. 2016, *MNRAS*, 462, 3937
 Lefloch, B., Ceccarelli, C., Codella, C., et al., 2017, *MNRAS*, 469, L73
 Lefloch, B., Bachiller, R., Ceccarelli, C. et al. 2018, *MNRAS*, 477, 4792
 Lucas, R., Liszt, H., 1998, *A&A*, 337, 246
 Marty, B., Chaussidon, M., Wiens, R. C., et al., 2011, *Science*, 332, 6037
 Mendes, M.B., Buhr, H., Berg, M.H., et al., 2012, *ApJ*, 746, L8
 Mendoza, E., Lefloch, B., López-Sepulcre, A., et al. 2014, *MNRAS*, 445, 151
 Mendoza, E., Lefloch, B., Ceccarelli, C. et al. 2018, *MNRAS*, 475, 5501
 Milam, S. N., Savage, C., Brewster, M. A., et al., 2005 *ApJ*, 634, 1126
 Podio, L., Lefloch, B., Ceccarelli, C., et al. 2014, *A&A*, 565, A64
 Podio, L., Codella, C., Gueth, F., et al. 2016, *A&A*, 593, L4
 Podio, L., Codella, C., Lefloch, B., et al., 2017, *MNRAS*, 470, L16
 Roueff, E., Loison, J.C., & Hickson, K.M., 2015, *A&A*, 576, 99
 Schilke, P., Walmsley, C. M., Pineau Des Forets, G. et al. 1992, *A&A*, 256, 595
 Suzuki, H., Yamamoto, S., Ohishi, M. et al. 1992, *ApJ*, 392, 551
 Tafalla, M., Bachiller, R., Lefloch, B., et al. 2015, *A&A*, 573, L2
 Tobin, J. J., Bergin, E. A., Hartmann, L. et al. 2013, *ApJ*, 765, 18
 Turner, B. E. 1971, *ApJ*, 163, L35
 Ungerechts, H., Bergin, E. A., Goldsmith, P. F. et al. 1997, *ApJ*, 482, 245
 van Dishoeck, E. F., Blake, G. A., Jansen, D. J., Groesbeck, T. D. 1995, *ApJ*, 447, 760
 Vastel, C., Bottinelli, S., Caux, E., et al., 2015, SF2A-2015: Proceedings of the Annual meeting of the French Society of Astronomy and Astrophysics. Eds.: F. Martins, S. Boissier, V. Buat, L. Cambrésy, P. Petit, pp.313-316
 Viti, S., Jimenez-Serra, I., Yates, J. A. et al. 2011, *ApJ*, 740, L3
 Zucker, C., Speagle, J. S., Schlafly, E. F. et al. 2019, *ApJ*, 879, 125