



Universiteit
Leiden
The Netherlands

37 new validated planets in overlapping K2 campaigns

Leon, J.P. de; Livingston, J.; Endl, M.; Cochran, W.D.; Hirano, T.; García, R.A.; ... ; Tamura, M.

Citation

Leon, J. P. de, Livingston, J., Endl, M., Cochran, W. D., Hirano, T., García, R. A., ... Tamura, M. (2021). 37 new validated planets in overlapping K2 campaigns. *Monthly Notices Of The Royal Astronomical Society*, 508(1), 195-218. doi:10.1093/mnras/stab2305

Version: Accepted Manuscript

License: [Leiden University Non-exclusive license](#)

Downloaded from: <https://hdl.handle.net/1887/3263934>

Note: To cite this publication please use the final published version (if applicable).

37 New Validated Planets in Overlapping *K2* Campaigns

J. P. de Leon^{1*}, J. Livingston¹, M. Endl⁹, W. D. Cochran^{8,9}, T. Hirano⁴, R. A. García¹⁴, S. Mathur^{6,7}, K. W. F. Lam¹⁰, J. Korth¹³, A. A. Trani²¹, F. Dai^{11,12}, E. Díez Alonso²², A. Castro-González²², M. Fridlund^{15,16}, A. Fukui^{2,6}, D. Gandolfi⁵, P. Kabath²³, M. Kuzuhara^{17,18}, R. Luque^{6,7}, A.B. Savel²⁵, H. Gill²⁴, C. Dressing²⁴, S. Giacalone²⁴, N. Narita^{3,6,17,20}, E. Palle^{6,7}, V. Van Eylen¹⁹, and M. Tamura^{1,17,18}

Accepted 2021 July 20. Received 2021 July 16; in original form 2020 October 15

ABSTRACT

We analysed 68 candidate planetary systems first identified during Campaigns 5 and 6 (C5 and C6) of the NASA *K2* mission. We set out to validate these systems by using a suite of follow-up observations, including adaptive optics, speckle imaging, and reconnaissance spectroscopy. The overlap between C5 with C16 and C18, and C6 with C17, yields lightcurves with long baselines that allow us to measure the transit ephemeris very precisely, revisit single transit candidates identified in earlier campaigns, and search for additional transiting planets with longer periods not detectable in previous works. Using *vespa*, we compute false positive probabilities of less than 1% for 37 candidates orbiting 29 unique host stars and hence statistically validate them as planets. These planets have a typical size of 2.2 R_{\oplus} and orbital periods between 1.99 and 52.71 days. We highlight interesting systems including a sub-Neptune with the longest period detected by *K2*, sub-Saturns around F stars, several multi-planetary systems in a variety of architectures. These results show that a wealth of planetary systems still remains in the *K2* data, some of which can be validated using minimal follow-up observations and taking advantage of analyses presented in previous catalogs.

Key words: exoplanets – transits – observations – spectroscopy – imaging

1 INTRODUCTION

The *Kepler* (Borucki et al. 2010) and *K2* (Howell et al. 2014) missions have brought many exciting exoplanet discoveries that yield new insights into the occurrence rate, formation and evolution of planets. This success was driven primarily by the sustained efforts to homogeneously analyse ensembles of lightcurves to detect new candidate systems and consequently statistically validate or confirm their planetary nature aided by follow-up data. Here, "validation" is different from "confirmation", wherein the former means that there is overwhelming evidence that the transits must be explained by a planet, through elimination of all false positive scenarios, whereas the latter involves the determination that the planet's mass is in the substellar regime ($M_P \lesssim 13M_{\text{JUP}}$). Confirmation via radial velocity (RV) mass measurements have been conducted for planets around bright stars (e.g., Dai et al. 2017; Fridlund et al. 2017; Lillo-Box et al. 2020) but it is usually impractical for faint or magnetically active stars, and it is prohibitively expensive for a large number of planet candidates detected by dedicated space missions, such as *Kepler*, *K2*, and *TESS* (Ricker et al. 2014).

A series of papers have so far presented catalogs of planet candidates and/or statistically validated planets in the following *K2* campaigns: Montet et al. (2015) in Campaign 1 (C1), Vanderburg et al. (2016a) in C0-C3, Adams et al. (2016) and Crossfield et al. (2016) in C0-C4, Zink et al. (2020) and Nardiello et al. (2016) in C5, Dressing et al. (2017) in C1-C7, Petigura et al. (2018) and Livingston et al. (2018b) in C5-C8, Kruse et al. (2019) in C0-C8, Mayo et al. (2018) in C0-C10 except C9, Livingston et al. (2018a) in C10, Wittenmyer et al. (2020) in C1-C13, Zink et al. (2019) in C0-C14 except C9 & C11, Castro González et al. (2020) in C12-C15, Dressing et al. (2019) in C1-C17, Crossfield et al. (2018) in C17, and Hirano et al. (2018), Kostov et al. (2019), Dattilo et al. (2019), and Heller et al. (2019) spanning almost the entire *K2* mission (C0-C18). Altogether these catalogs have increased the cumulative number of validated planets and planet candidates, especially those with sizes $< 4 R_{\oplus}$ orbiting stars relatively brighter than *Kepler* host stars. Despite the overwhelming number of planets found in the last few years, hundreds more remain to be discovered in the *K2* mission alone. Based on the original *Kepler* catalog, Dotson et al. (2019) predicted 1317 ± 261 detectable exoplanets in the *K2* data set but

* E-mail: jpdeleon@g.ecc.u-tokyo.ac.jp

only 1/3 of this prediction are validated or confirmed *K2* planets¹. Moreover, there are currently more than 800 planet candidates from the *K2* mission alone that still await validation.

Here we present follow-up observations of 68 host stars including reconnaissance spectroscopy and high-resolution imaging to measure host stars' properties and identify nearby stars; both of which are helpful in identification and ruling out false positive scenarios. The majority of these host stars were first observed by *K2* either during Campaign 5 (hereafter C5) or C6, after which transiting candidates were reported by [Pope et al. \(2016\)](#), [Dressing et al. \(2019\)](#), [Mayo et al. \(2018\)](#), and [Kruse et al. \(2019\)](#). Fifty stars were observed again in the succeeding overlapping *K2* campaigns whereas eighteen stars were only observed in a single *K2* Campaign. Because C5 overlaps with C16 & C18, and C6 overlaps with C17, this provides lightcurves with baselines as long as 3 years (i.e. for C5 & C18; see Table 1). This allows us to measure the transit ephemeris very precisely, revisit single transit candidates identified in earlier campaigns, and search for additional transiting planets with longer periods leveraging multiple *K2* campaigns for the first time. We validated 37 planet candidates, 34 of which were also detected in previous catalogs and 3 are new detections. We also measured rotation periods for 42 stars in our sample, and searched for additional planets via transit timing variations. This research was done as part of the KESPRINT collaboration², which has so far primarily focused on the detection of planets for the purpose of characterizing interesting individual systems in detail (e.g., [Hirano et al. 2016](#); [Barragán et al. 2018](#); [Van Eylen et al. 2018a](#); [Korth et al. 2019](#)); in this paper we present follow-up observations and statistical validation results for a large number of planet candidates found as part of this process, similar to [Livingston et al. \(2018a\)](#).

The paper is structured as follows: in §2, we present the observations and ancillary data we analyzed in this work, comprising *K2* photometry, reconnaissance spectroscopy, adaptive optics, and speckle imaging. In §3 we describe our transit search for new candidates, characterization of the host stars, transit modeling, planet validation, stability analysis of multi-planet systems, and search for transit timing variations. In §4 we present the results of our analyses and discuss individually interesting systems, and we conclude with a summary in §5.

2 DATA AND OBSERVATIONS

2.1 *K2* photometry

The *K2* mission observed a series of patches of the sky with an area of 100 square degrees along the ecliptic called "campaigns", lasting up to 83 days each. In a typical *K2* campaign, the number of targets ranges in the tens of thousands with long-cadence observations (30-minute integration), and a few hundred with short-cadence observations (1-minute integration). There are occasional overlaps between campaign fields, especially between C5, C16, and C18, located in Cancer constellation as well as C6 and C17, located in Virgo. Table 1 summarizes the start and end dates of observations and typical coordinate positions of each campaign. All of the 68 stars in our sample were first observed in C5 and C6 in the long cadence mode. Of the 68 stars in our sample, 48 stars were observed

Table 1. *K2* observations in Cancer and Virgo.

Campaign	Start	End	RA	Dec.
Cancer				
5	2015 Apr 27	2015 Jul 10	08:40:38	16:49:47
16	2017 Dec 07	2018 Feb 25	08:54:50	18:31:31
18	2018 May 12	2018 Jul 02	08:40:39	16:49:40
Virgo				
6	2015 Jul 14	2015 Sep 30	13:39:28	-11:17:43
17	2018 Mar 01	2018 May 08	13:30:12	-07:43:16

again in the succeeding *K2* campaigns. The *K2* campaigns used for each target are listed in Table 2.

2.2 *Gaia* DR2 photometry and astrometry

The presence of multiple unresolved stars in photometric observations of a transiting planetary system biases measurements of the planet's radius, mass, and atmospheric conditions (e.g., [Southworth & Evans 2016](#)). For all our targets, we leverage *Gaia* Data Release 2 (DR2, [Gaia Collaboration et al. 2019](#)) to search for direct and indirect evidence of potential contaminating sources in *K2* observations. In our sample, we found *Gaia* DR2 sources separated from the target as close as 1". *Gaia* DR2 can also be useful to look for hints of binarity. [Evans \(2018\)](#) proposed that systems with large Astrometric Goodness of Fit of the astrometric solution for the source in the Along-Scan direction ($G0F_AL > 20$) and Astrometric Excess Noise significance ($D > 5$)³ are plausibly poorly-resolved binaries. We added these values in the last two columns in Table 3. Stars that are exceptionally bright or have high proper motion are proposed to explain the large offset causing difficulties in modelling saturated or fast-moving stars, rather than unresolved binarity. We do not see this to be a concern however since EPIC 212178066, the brightest star ($V=6.9$ mag) in our sample with proper motions $(\mu_\alpha, \mu_\delta)=(-47.30\pm 0.06, -148.78\pm 0.05)$ has $G0F_AL=10.59$ and $D=0.00$. Such values are well below the aforementioned empirically-motivated cutoffs chosen for plausible unresolved binaries in *Gaia* DR2.

2.3 Speckle and AO imaging

Adaptive optics (AO) and speckle imaging (SI) are useful to determine if any fainter point source exists closer to the target inside of *Gaia*'s point-source detection limits. We observed several of our targets with the NASA Exoplanet Star and Speckle Imager (NESSI) on the 3.5-m WIYN telescope at the Kitt Peak National Observatory. NESSI is an instrument that uses high-speed electron-multiplying CCDs (EMCCDs) to capture sequences of 40 ms exposures simultaneously in two bands ([Scott et al. 2018](#)). Data were collected following the procedures described by [Howell et al. \(2011\)](#). We conducted all observations simultaneously in a 'blue' band centered at 562 nm with a width of 44 nm, and a 'red' band centered at 832 nm with a width of 40 nm. In total, 66 speckle images were collected for a distinct sample of 29 stars in our targets. These observations were made in 2016 October through November and 2017 March through

¹ 426 at time of writing: https://exoplanetarchive.ipac.caltech.edu/docs/counts_detail.html

² <https://www.iac.es/proyecto/kesprint>

³ For details, see: https://gea.esac.esa.int/archive/documentation/GDR2/Gaia_archive/chap_datamodel/sec_dm_main_tables/sscc_dm_gaia_source.html

Table 2. Summary of *K2* and follow-up data used in this work. K2/C=campaign; AO=Adaptive optics; SI=Speckle imaging; RS=Reconnaissance spectroscopy; D17=Dressing et al. 2017; P18=Petigura et al. 2018; M18=Mayo et al. 2018; Mat18=Matson et al. 2018

EPIC	K2/C	AO	SI	RS
211314705	5	This work	This work	
211335816	5/18			This work
211336288	5/18			
211357309	5/18			This work
211383821	5/18			D17
211399359	5/18	D19		P18
211401787	5/18		M18	This work
211413752	5/16/18		This work	P18
211439059	5/18		This work	P18
211490999	5/16/18		This work	P18
211502222	16			This work
211578235	5/18	This work		P18
211579112	5/18	This work	This work	
211611158	5/16/18			M18
211645912	5/18		This work	P18
211647930	16			This work
211694226	5/16/18			D17
211730024	16			This work
211731298	5/18			
211743874	5/18		This work	P18
211763214	5/16/18	This work	This work	M18
211762841	5/18			D17
211770696	5/18		M18	P18
211797637	5/18			
211799258	5/18	D17		D17
211779390	5/18			This work
211800191	5/18		M18	This work
211817229	5/18			D17
211843564	5/18			
211923431	5/18	This work		
211939692	5/18		This work	
211965883	5	This work	This work	D17
211978988	5/18			M18
211987231	5		Mat18	This work
211995398	5/18			
211997641	5/16	This work		
212006318	5/18		This work	P18
212009150	5/16/18			
212040382	16	This work		This work
212041476	16			This work
212058012	16			This work
212072539	5/16/18			
212081533	16	This work		This work
212088059	5/16/18	This work	This work	D17
212099230	5/16/18		Mat18	This work
212132195	5/18	This work	This work	M18
212161956	5/18		This work	
212178066	16/18			This work
212204403	16			This work
212278644	6			This work
212297394	6		This work	
212420823	6		This work	This work
212428509	6/17		This work	P18
212435047	6/17		This work	P18
212440430	6/17		This work	This work
212495601	6/17		This work	This work
212543933	6		This work	This work
212570977	6/17		This work	P18
212563850	6/17		This work	This work
212587672	6/17		M18	P18
212628098	6/17		Mat18	D17
212628477	17		This work	This work
212634172	6/17			D17
212661144	6/17		This work	
212639319	6/17		M18	P18
212690867	6/17			D17
212797028	6/17		This work	P18
251319382	16		This work	This work
251554286	17		This work	This work

May. All of our speckle imaging data are publicly available via the community portal ExoFOP⁴.

We observed EPIC 211314705, EPIC 211579112, EPIC 211923431, EPIC 212040382, EPIC 211439059, and EPIC 211763214 using Infrared Camera and Spectrograph (IRCS; Kobayashi et al. 2000; Hayano et al. 2008) on the 8.2-m Subaru Telescope at the Mauna Kea Observatory to rule out false positives caused by an eclipsing binary as well as to search for potential (sub-)stellar companions within a few arcseconds from the target. For five stars in our sample (211314705, 211763214, 211965883, 212088059, 212132195), we obtained *H*-band images on UT 2016 November 6, which were reduced following the standard procedure described in Hirano et al. (2016). EPIC 211579112 was very faint and its *R*-magnitude is close to the border magnitude for AO to work properly; we decided to take *K'*-band images of this target, for which the natural seeing size is slightly better than in the *H*-band.

The reduced Subaru/IRCS AO images are shown as inset in Figure 1 together with their corresponding contrast curves. Smooth contrast curves were produced from the reconstructed images by fitting a cubic spline to the 5- σ sensitivity limits within a series of concentric annuli. Also shown are the contrast curves from speckle-interferometric images taken with WIYN/NESSI. The AO and speckle images and their corresponding contrast curves in Figure 1 illustrate that no companions were detected within a radius of 4'' down to a contrast level of 8 magnitudes, and no bright close binary was seen with a resolution of 0.1''. These observations sharply reduce the possibility that an unresolved background star is the source of the transits. There are 7 stars in our sample however that have companions detected in speckle images. We report the separation *r* and the magnitude difference between the brighter and the fainter star in *Kepler* band, ΔK_p in Table 4. The contrast curves are also used as additional constraints for false positive calculation in §3.5.

We also observed EPIC 211923431, EPIC 211997641, EPIC 212040382, and EPIC 212081533 on UT 2019 January 24 using the ShARCS camera on the Shane 3-meter telescope at Lick Observatory (Kupke et al. 2012; Gavel et al. 2014; McGurk et al. 2014). Observations were taken with the Shane adaptive optics system in natural guide star and laser guide star modes (See Savell et al. (2020) for a detailed description of the observing strategy and reduction procedure). We collected all of our observations using a *Ks* filter ($\lambda_0 = 2.15 \mu\text{m}$, $\Delta\lambda = 0.32 \mu\text{m}$). The AO images and their contrast curves are shown in Figure 2. We find no nearby stellar companions within our detection limits.

2.4 Reconnaissance spectroscopy

Medium to high-resolution spectra enable precise physical characterization of the star and therefore planet. For 58 stars in our sample, we obtained over the course of four years (2015-2019) high-resolution spectra with the Tull Coudé cross-dispersed echelle spectrograph (Tull et al. 1995) at the Harlan J. Smith 2.7-m telescope at the McDonald Observatory. Observations were conducted with the 1.2'' \times 8.2'' slit, yielding a resolving power of $R \sim 60,000$. The spectra cover 375–1020 nm, with increasingly larger inter-order gaps long ward of 570 nm. For each target star, we obtained three successive short exposures in order to allow removal of energetic particle hits on the CCD detector. We used an exposure meter to obtain an accurate flux-weighted barycentric correction and to give

⁴ <https://exofop.ipac.caltech.edu/k2/>

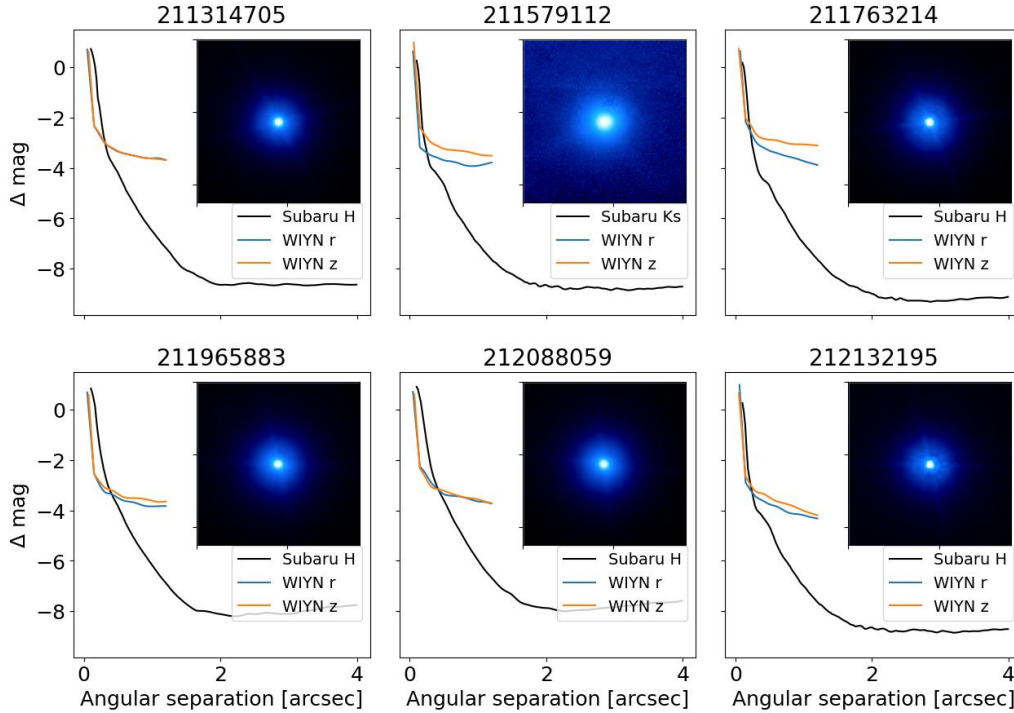


Figure 1. $5\text{-}\sigma$ contrast curves (black) extracted from the reduced Subaru/IRCS AO images (inset). For comparison, we also show the speckle imaging contrast curves from WIYN/NESSI; the complementary nature of the two techniques is especially pronounced in the case of EPIC 211579112. No companions were detected within $4''$ down to a typical contrast of 8 magnitudes, and no bright close binary was seen with a resolution of $0.05''$.

an exposure length that resulted in a signal-to-noise ratio (SNR) of about 30 per pixel. Bracketing exposures of a Th-Ar hollow cathode lamp were obtained in order to generate a wavelength calibration and to remove spectrograph drifts. This enabled calculation of absolute radial velocities from the spectra. We traced the apertures for each spectral order and used an optimal extraction algorithm to obtain the detected stellar flux as a function of wavelength. We computed stellar parameters from our reconnaissance Tull spectra using Kea (Endl & Cochran 2016) dense grid. In brief, we used standard IRAF routines (Tody 1986) to perform flat fielding, bias subtraction, and order extraction, and we used a blaze function determined from high SNR flat field exposures to correct for curvature induced by the blaze. Kea is calibrated to stars in the T_{eff} range 5000-6700 K and uses a large grid of synthetic model stellar spectra to compute stellar effective temperatures (T_{eff}), surface gravities ($\log g$), and metallicities ($[\text{Fe}/\text{H}]$). The values and their formal $1\text{-}\sigma$ uncertainties derived using Kea fine grid were used as spectroscopic constraints in stellar characterization using isochrones in §3.2.

2.5 Archival imaging

For the stars with AO/speckle non-detections, there is still the possibility that a background eclipsing binary star could be positioned behind the target star, evading detection. A few of the stars in our sample have proper motions $\geq 50 \text{ mas yr}^{-1}$, so they have moved across the sky by $> 2''$ since they were imaged since the first Palomar Observatory Sky Survey (POSS1) in the 1950s. For such stars, we downloaded the POSS1 images from Space Telescope Science

Institute (STScI) Digitized Survey (DSS)⁵. We expect a low probability of chance alignment with a foreground or background star given the high ($28\text{-}50^\circ$) galactic latitudes of the stars in our sample.

3 ANALYSIS

3.1 Vetting and transit search

We downloaded the lightcurves from Mikulski Archive for Space Telescopes (MAST), which were processed by the EVEREST⁶ pipeline (Luger et al. 2016, 2018). We also analyzed the lightcurves from the K2SFF⁷ pipeline (Vanderburg & Johnson 2014) to facilitate cross-pipeline comparison and obtain reliable results. In most cases, the EVEREST lightcurves have relatively smaller out-of-transit scatter for the stars in our sample, except for EPIC 212178066 and EPIC 211502222. We also found that the optimum photometric aperture for EPIC 211978988 selected by the EVEREST pipeline is too small to contain most of the flux from the star. After removing all flagged cadences and other data points that are more than $5\text{-}\sigma$ above the running mean, we flattened and normalized the raw lightcurves by using a median filter with kernel size of 49 cadences, corresponding to $\sim 1 \text{ day}$ ⁸. For targets observed in multiple campaigns, we applied this process for each campaign before finally concatenating the data to form the final flattened lightcurve. Note that there is at least

⁵ http://archive.stsci.edu/cgi-bin/dss_form

⁶ <https://archive.stsci.edu/hlsp/everest>

⁷ <https://archive.stsci.edu/hlsp/k2sff>

⁸ We checked that our choice on the kernel size neither affects the transit depth nor introduces edge effects in the lightcurves.

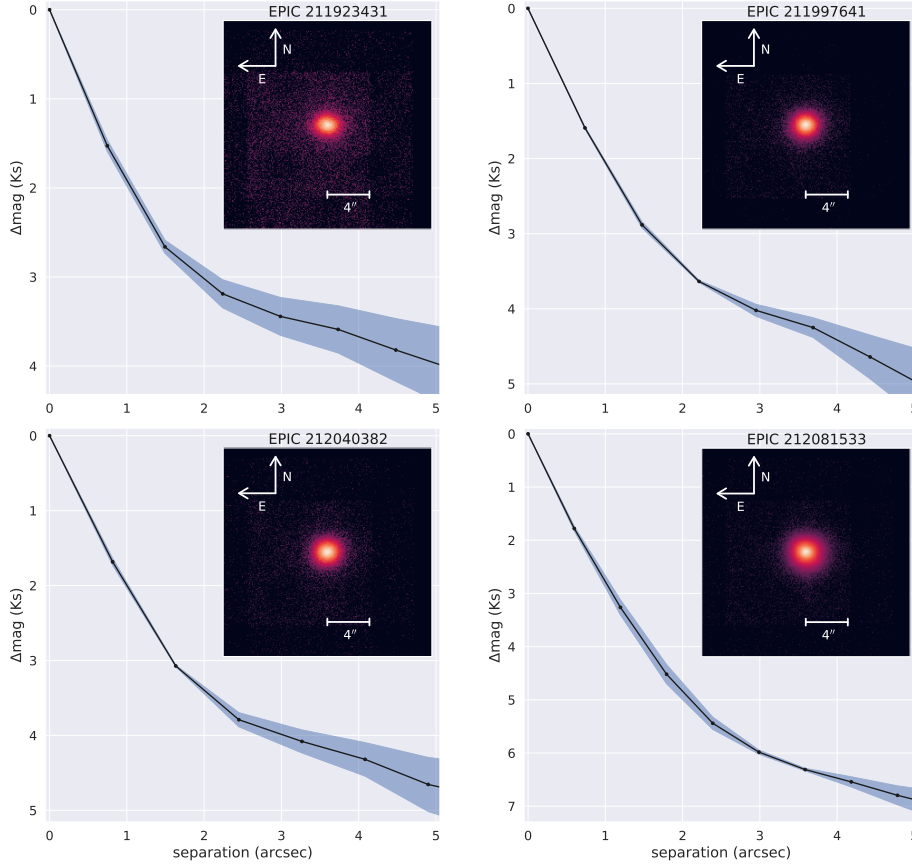


Figure 2. Adaptive optics images of EPIC 211923431, EPIC 211997641, EPIC 212040382, and EPIC 212081533 taken with the ShARCS camera on the Shane 3-meter telescope at Lick Observatory. For each image, we also present a contrast curve generated by calculating the median values (solid lines) and root-mean-square errors (blue, shaded regions) in annuli centered on each target, where the bin width of each annulus is equal to the full width at half max of the point spread function.

a 2.5 years gap between C5 & C16 and C6 & C17 data sets. We used the vetting results from DAVE pipeline⁹ (Kostov et al. 2019) when available and applied a similar method to the remaining targets to identify astrophysical false positives and instrumental false alarms. The tests include (a) photocenter analysis to rule out background eclipsing binaries and (b) flux time-series analysis to rule out odd-even differences, secondary eclipses, low-S/N events, variability other than a transit, and size of the transiting object. The candidates flagged after vetting were not included in the succeeding analyses. We also ran EDI-Vetter¹⁰ which is a similar tool to identify false positive transit signal in the K2 data set by detecting flux contamination, odd/even transits, non-unique signal, and secondary eclipse among others (Zink et al. 2020). We found 2 stars (EPIC 211843564 & EPIC 212428509) with secondary eclipses. In particular, Petigura et al. (2018) reported EPIC 212428509.01 to have a period of 3.02 d when in fact the primary and secondary eclipses with almost equal depths can be clearly seen if the lightcurve is phase-folded at twice this period. We excluded these targets in the succeeding analyses.

We then did a blind search for transiting exoplanet candidates on the EVEREST and K2SFF lightcurves using the DST algorithm (Cabrera et al. 2012) which optimizes the fit to the transit shapes with a parabolic function. We also used the `transit-least-squares`

algorithm (TLS, Hippke & Heller 2019) which searches for transit-like features in an unbinned lightcurve using a transit model template and restricting the trial transit durations to a smaller range that encompasses the periods of all known planets. In general, all transit signals with reported ephemerides from Mayo et al. (2018) and Kruse et al. (2019) in K2/C5 & C6 and from Yu et al. (2018) in C16 are recovered in the lightcurves using both pipelines, as well as from our own custom pipeline described in Dai et al. (2017) which implements a similar approach as the transit search method in Vanderburg & Johnson (2014). In the rare case when we did not detect the signal in one campaign, mainly due to the significantly larger scatter relative to the other campaigns, we did not include the data to avoid injecting unwanted noise and bias in the modeling results. The pre-processed lightcurves were then used for transit analyses presented in §3.4.

3.2 Stellar characterization

We begin by characterizing the bulk properties of the host stars in our sample. The main parameters of interest include stellar radius, mass, effective temperature, surface gravity, and metallicity. Obtaining robust stellar parameters is important as the result of the subsequent analyses will be dependent on the derived stellar parameters. To obtain these parameters, we utilized the Python

⁹ <http://keplertcert.seti.org/DAVE/>

¹⁰ <https://github.com/jonzink/EDI-Vetter>

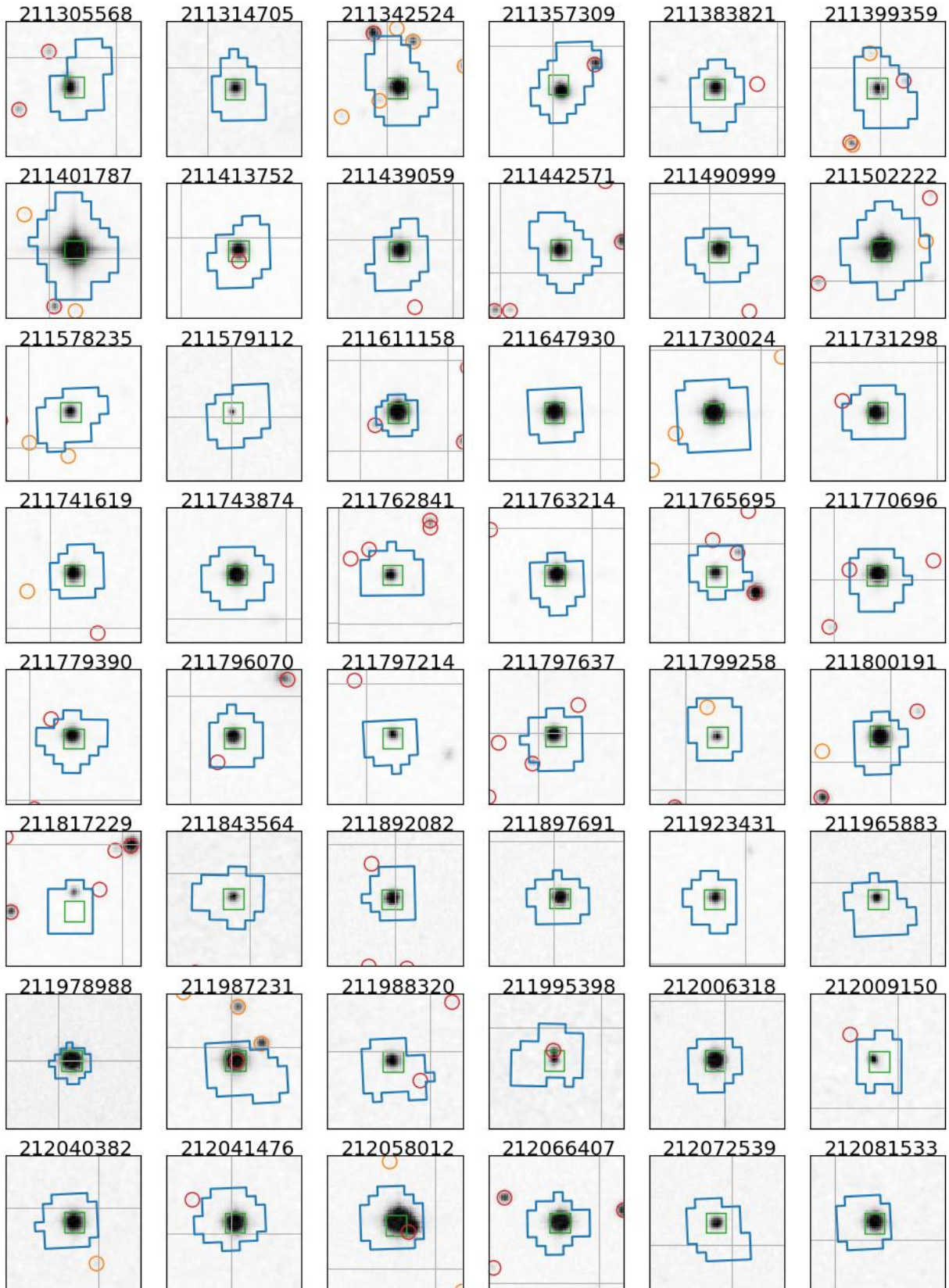


Figure 3. $1' \times 1'$ cut-out images from the Digital Sky Survey 2 (DSS2) in red filter centered on the target superposed with photometric aperture outline used in the first campaign of the star was observed. The *Gaia* sources that are potential NEBs and those we ruled out are indicated as red and orange circles, respectively. All figures are aligned such that north is up and east to the left.

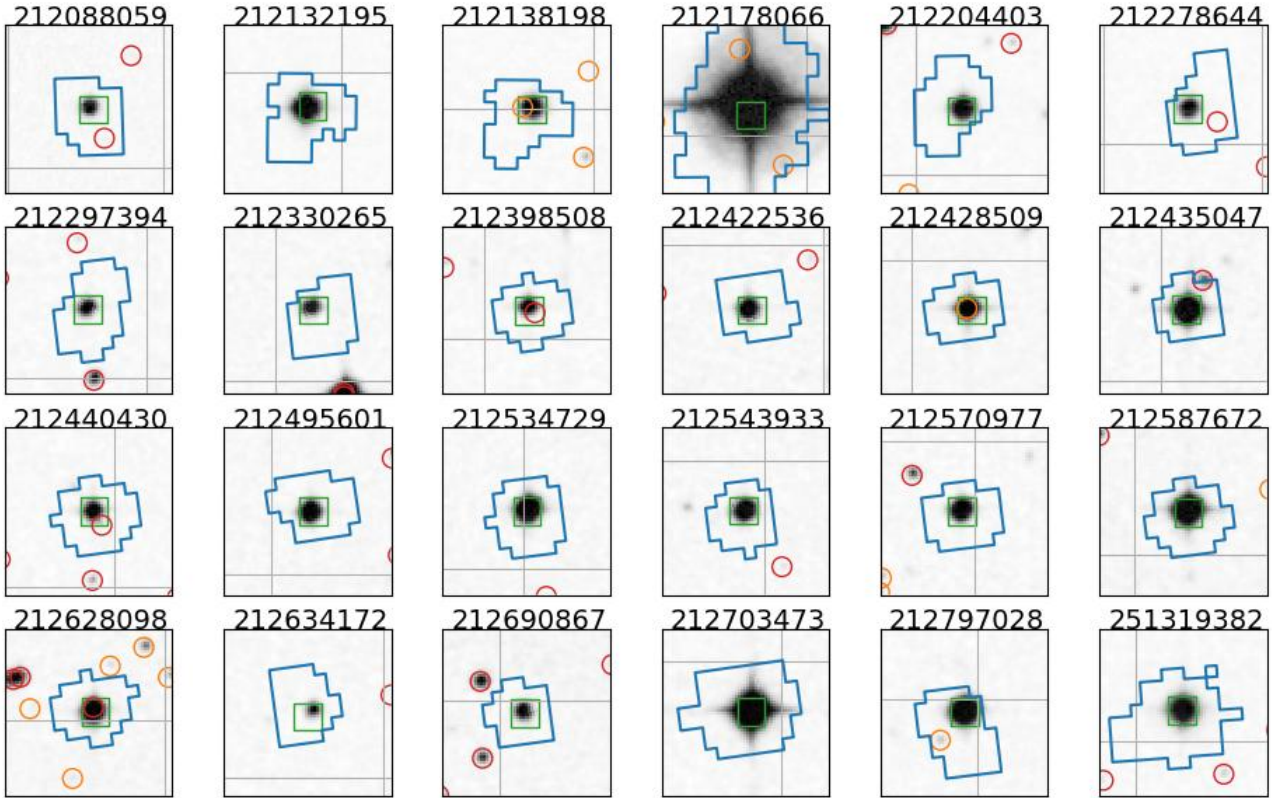


Figure 3 – *continued* $1' \times 1'$ cut-out images from the Digital Sky Survey 2 (DSS2) in red filter centered on the target superposed with photometric aperture outline (blue) used in the first *K2* campaign of the star was observed. The *Gaia* sources that are potential NEBs and those we ruled out are indicated as red and orange circles, respectively. All figures are aligned such that north is up and east to the left.

package *isochrones* (Morton 2015a)¹¹, that relies on the MESA Isochrones & Stellar Tracks (MIST, Dotter 2016; Choi et al. 2016; Paxton et al. 2015) grid to infer stellar parameters using a nested sampling scheme given photometric, spectroscopic data and other empirical constraints. We used *isochrones* for stellar modeling in tandem with *vespa* similar to previous catalogs (e.g., Morton et al. 2016; Mayo et al. 2018; Livingston et al. 2018a,b). In particular, we used 2MASS (*JHKs*) photometry (Skrutskie et al. 2006) along with *Gaia* DR2 parallax (Gaia Collaboration et al. 2019) and extinction. We corrected the parallax for the offset found in Stassun & Torres (2018) while quadratically adding 0.1 mas to the uncertainty to account for systematics in the *Gaia* DR2 data (Luri et al. 2018). Additionally, we used T_{eff} , $\log g$, and $[\text{Fe}/\text{H}]$ derived from spectroscopy (see §2.4) or taken from the literature as additional priors. We note that adding optical photometry to the aforementioned inputs did not change the results to within $1-\sigma$ in all the stars in our sample. In fact, using 2MASS *JHKs* photometry alone yields more reliable stellar parameters than the combined 2MASS+optical photometry, as previously observed by Mayo et al. (2018). Including photometry from additional surveys that are calibrated differently and have distinct systematic uncertainties could bias our results. The results of *isochrones* fits are summarized in Table 3. To check for consistency, we compared our derived values to the stellar parameters of *K2* hosts derived by Hardegree-Ullman et al. (2020) if available. These parameters were inferred using photometric bands in combination with spectroscopic parameters

(spectral type, T_{eff} , $\log g$, $[\text{Fe}/\text{H}]$) derived from the Large Sky Area Multi-Object Fibre Spectroscopic Telescope (LAMOST, Cui et al. 2012) spectra. We found that both derived parameters in our sample are typically consistent within $1-\sigma$ as shown in Figure 4a and Figure 4b. Note however, that we found an apparent systematic bias of $T_{\text{eff}} = 70$ K in *isochrones* when compared to the T_{eff} reported in Hardegree-Ullman et al. (2020), this bias is smaller than the typical uncertainties in our reported T_{eff} . We also ran *isoclassify*¹² to obtain stellar parameters of interest following the prescription of Huber et al. (2017) using identical inputs as in our *isochrones* runs. We obtained results that are consistent to within $1-\sigma$.

3.3 Stellar multiplicity

Figure 3 shows the $1' \times 1'$ images from the Digital Sky Survey 2 (DSS2) taken in red filter centered on the target (green square). Also superposed are the *Gaia* sources (circles) within the field of view and the photometric aperture (blue polygon) chosen for the campaign when the target was first observed by *K2*. The optimum aperture determined by the chosen pipeline changes depending on the campaign. For the EVEREST pipeline, the aperture radius typically spans 3 - 5 *Kepler* pixels in radius except for the bright star EPIC 212178066 which has a radius of 7 pixels. In total, 16 stars in our sample have at least one *Gaia* source within the aperture. For each case, we compute the amount by which the target is diluted by the flux from the neighboring *Gaia* source using $\gamma = 1 + 10^{0.4\Delta m}$,

¹¹ <http://github.com/timothymorton/isochrones>

¹² <https://github.com/danxhuber/isoclassify>

Table 3. Summary of stellar parameters. (a) astrometric goodness of fit; (b) astrometric excess noise significance.

EPIC	R_{\star} [R_{\odot}]	M_{\star} [M_{\odot}]	T_{eff} [K]	$\log g$ [cgs]	[Fe/H] [dex]	K_p [mag]	π [mas]	GOF_AL ^a	D ^b
211314705	0.41 ^{+0.01} _{-0.01}	0.43 ^{+0.01} _{-0.01}	3669 ⁺⁸⁸ ₋₈₂	4.86 ^{+0.01} _{-0.01}	-0.04 ^{+0.2} _{-0.24}	14.38	10.87	6.67	6.44
211335816	1.65 ^{+0.08} _{-0.07}	1.29 ^{+0.05} _{-0.05}	6236 ⁺¹⁴⁰ ₋₁₃₈	4.12 ^{+0.04} _{-0.04}	0.03 ^{+0.09} _{-0.08}	11.94	1.86	3.93	0.00
211336288	0.56 ^{+0.01} _{-0.01}	0.58 ^{+0.01} _{-0.01}	4052 ⁺⁴² ₋₃₈	4.7 ^{+0.01} _{-0.01}	-0.07 ^{+0.07} _{-0.07}	14.56	4.95	-2.44	0.00
211357309	0.44 ^{+0.01} _{-0.01}	0.47 ^{+0.01} _{-0.01}	4134 ⁺⁶⁰ ₋₅₁	4.82 ^{+0.01} _{-0.01}	-0.9 ^{+0.11} _{-0.15}	13.08	14.49	15.83	13.48
211383821	0.62 ^{+0.01} _{-0.01}	0.64 ^{+0.01} _{-0.01}	4343 ⁺⁴⁶ ₋₄₅	4.65 ^{+0.01} _{-0.01}	-0.11 ^{+0.07} _{-0.07}	14.02	4.34	-3.23	0.00
211399359	0.76 ^{+0.02} _{-0.02}	0.82 ^{+0.02} _{-0.02}	5000 ⁺⁷¹ ₋₇₆	4.58 ^{+0.02} _{-0.03}	0.03 ^{+0.05} _{-0.06}	14.39	2.23	-0.97	0.00
211401787	1.5 ^{+0.03} _{-0.03}	1.23 ^{+0.02} _{-0.02}	6232 ⁺³³ ₋₃₉	4.18 ^{+0.02} _{-0.02}	-0.03 ^{+0.03} _{-0.03}	9.51	6.22	9.52	0.00
211413752	0.78 ^{+0.02} _{-0.02}	0.84 ^{+0.02} _{-0.02}	5106 ⁺⁷⁰ ₋₆₁	4.58 ^{+0.02} _{-0.03}	0.03 ^{+0.05} _{-0.05}	13.56	3.02	-5.01	0.00
211439059	0.85 ^{+0.05} _{-0.03}	0.9 ^{+0.03} _{-0.03}	5472 ⁺⁸⁵ ₋₈₃	4.54 ^{+0.03} _{-0.05}	-0.01 ^{+0.06} _{-0.06}	13.03	3.04	264.08	5704.41
211490999	0.94 ^{+0.04} _{-0.04}	0.91 ^{+0.03} _{-0.03}	5543 ⁺⁸⁰ ₋₇₈	4.45 ^{+0.05} _{-0.04}	-0.01 ^{+0.05} _{-0.05}	13.44	2.13	-3.42	0.00
211502222	1.06 ^{+0.03} _{-0.02}	1.1 ^{+0.03} _{-0.04}	5994 ⁺⁹³ ₋₉₁	4.43 ^{+0.02} _{-0.03}	0.08 ^{+0.08} _{-0.08}	11.19	4.70	13.25	0.00
211578235	1.15 ^{+0.1} _{-0.08}	0.9 ^{+0.02} _{-0.02}	5653 ⁺⁵⁵ ₋₅₄	4.27 ^{+0.06} _{-0.07}	-0.12 ^{+0.05} _{-0.05}	14.33	1.28	-3.91	0.00
211579112	0.28 ^{+0.02} _{-0.01}	0.27 ^{+0.02} _{-0.02}	3315 ⁺¹³⁷ ₋₁₅₂	4.97 ^{+0.03} _{-0.03}	0.09 ^{+0.15} _{-0.1}	16.48	8.09	5.06	4.50
211611158	0.94 ^{+0.03} _{-0.03}	0.96 ^{+0.05} _{-0.07}	5788 ⁺¹⁹⁰ ₋₁₅₇	4.48 ^{+0.03} _{-0.04}	-0.1 ^{+0.17} _{-0.2}	12.06	3.70	8.70	0.00
211645912	0.97 ^{+0.03} _{-0.03}	1.03 ^{+0.03} _{-0.03}	5892 ⁺⁷³ ₋₇₁	4.48 ^{+0.02} _{-0.03}	0 ^{+0.05} _{-0.05}	12.47	2.84	3.36	0.00
211647930	1.22 ^{+0.05} _{-0.05}	1.06 ^{+0.04} _{-0.04}	5880 ⁺⁸⁵ ₋₈₂	4.29 ^{+0.04} _{-0.04}	0.07 ^{+0.07} _{-0.07}	11.99	2.88	4.93	0.00
211730024	1.49 ^{+0.07} _{-0.06}	1.36 ^{+0.05} _{-0.05}	6502 ⁺¹³² ₋₁₃₀	4.22 ^{+0.04} _{-0.04}	0.17 ^{+0.1} _{-0.1}	11.35	2.66	13.35	1.92
211743874	1.33 ^{+0.07} _{-0.06}	1.23 ^{+0.04} _{-0.04}	6222 ⁺⁹⁶ ₋₉₁	4.28 ^{+0.04} _{-0.04}	0.1 ^{+0.05} _{-0.05}	12.47	1.76	3.08	0.00
211762841	0.61 ^{+0.01} _{-0.01}	0.63 ^{+0.02} _{-0.01}	4079 ⁺⁵⁰ ₋₄₈	4.68 ^{+0.01} _{-0.01}	0.13 ^{+0.07} _{-0.07}	14.79	4.14	0.58	0.00
211763214	0.8 ^{+0.01} _{-0.01}	0.86 ^{+0.03} _{-0.05}	5424 ⁺¹⁹² ₋₁₄₄	4.56 ^{+0.02} _{-0.03}	-0.17 ^{+0.16} _{-0.2}	12.51	4.15	5.57	0.00
211770696	1.32 ^{+0.06} _{-0.06}	0.94 ^{+0.04} _{-0.04}	5869 ⁺⁸⁸ ₋₈₄	4.17 ^{+0.04} _{-0.04}	-0.27 ^{+0.06} _{-0.06}	12.23	2.34	4.06	0.00
211779390	0.63 ^{+0.01} _{-0.01}	0.66 ^{+0.02} _{-0.02}	4558 ⁺⁹¹ ₋₈₁	4.65 ^{+0.01} _{-0.01}	-0.23 ^{+0.19} _{-0.13}	13.05	6.34	0.18	0.00
211796070	0.89 ^{+0.03} _{-0.03}	0.15 ^{+0.05} _{-0.03}	4134 ⁺⁸⁸ ₋₆₈	3.7 ^{+0.15} _{-0.13}	-2.93 ^{+0.26} _{-0.25}	13.88	3.68	-4.15	0.00
211797637	0.78 ^{+0.02} _{-0.03}	0.17 ^{+0.06} _{-0.04}	4144 ⁺⁹³ ₋₇₄	3.88 ^{+0.16} _{-0.14}	-2.78 ^{+0.31} _{-0.26}	13.69	4.49	-7.90	0.00
211799258	0.44 ^{+0.01} _{-0.01}	0.47 ^{+0.01} _{-0.01}	3699 ⁺⁶⁶ ₋₇₄	4.82 ^{+0.01} _{-0.01}	0.04 ^{+0.17} _{-0.16}	15.91	5.49	8.06	7.94
211800191	1.22 ^{+0.06} _{-0.05}	0.94 ^{+0.05} _{-0.04}	5929 ⁺¹²⁰ ₋₁₁₂	4.24 ^{+0.04} _{-0.04}	-0.28 ^{+0.06} _{-0.06}	12.44	2.47	5.03	0.00
211817229	0.16 ^{+0.0} _{-0.0}	0.14 ^{+0.0} _{-0.0}	3246 ⁺³² ₋₃₇	5.17 ^{+0.01} _{-0.01}	-0.23 ^{+0.06} _{-0.06}	15.49	23.29	20.31	31.01
211843564	0.59 ^{+0.02} _{-0.02}	0.61 ^{+0.02} _{-0.02}	3944 ⁺⁴² ₋₄₃	4.69 ^{+0.02} _{-0.02}	0.22 ^{+0.13} _{-0.13}	16.05	2.62	21.12	35.81
211897691	0.72 ^{+0.03} _{-0.03}	0.74 ^{+0.03} _{-0.03}	4857 ⁺⁸⁴ ₋₈₄	4.59 ^{+0.02} _{-0.02}	-0.11 ^{+0.14} _{-0.14}	14.34	2.75	-4.78	0.00
211923431	1.13 ^{+0.14} _{-0.1}	0.93 ^{+0.04} _{-0.04}	5532 ⁺⁹⁰ ₋₉₀	4.3 ^{+0.07} _{-0.09}	0.08 ^{+0.13} _{-0.14}	14.13	1.33	-3.26	0.00
211939692	1.39 ^{+0.06} _{-0.06}	1.34 ^{+0.08} _{-0.09}	6806 ⁺⁴¹¹ ₋₂₉₃	4.28 ^{+0.04} _{-0.05}	-0.06 ^{+0.17} _{-0.22}	11.72	2.42	6.15	0.00
211965883	0.61 ^{+0.01} _{-0.01}	0.63 ^{+0.02} _{-0.02}	4314 ⁺⁵⁰ ₋₄₃	4.67 ^{+0.01} _{-0.01}	-0.14 ^{+0.07} _{-0.07}	14.09	4.74	0.02	0.00
211978988	1.16 ^{+0.06} _{-0.05}	0.98 ^{+0.07} _{-0.07}	5817 ⁺⁷³ ₋₄₈	4.3 ^{+0.03} _{-0.05}	-0.05 ^{+0.18} _{-0.18}	12.56	2.34	2.37	0.00
211987231	1.46 ^{+0.15} _{-0.12}	1.11 ^{+0.09} _{-0.07}	5980 ⁺¹¹⁸ ₋₁₃₃	4.16 ^{+0.07} _{-0.07}	-0.01 ^{+0.08} _{-0.09}	11.89	2.60	50.13	99.62
211995398	1.16 ^{+0.15} _{-0.13}	0.13 ^{+0.03} _{-0.02}	3921 ⁺⁹¹ ₋₈₃	3.43 ^{+0.08} _{-0.09}	-2.17 ^{+0.29} _{-0.29}	16.70	1.33	1.78	1.06
211997641	2.54 ^{+0.35} _{-0.02}	1.65 ^{+0.16} _{-0.02}	6591 ⁺³³⁸ ₋₃₀₄	3.84 ^{+0.08} _{-0.09}	0.07 ^{+0.16} _{-0.17}	12.87	0.96	13.09	3.46
212006318	1.56 ^{+0.11} _{-0.1}	1.11 ^{+0.07} _{-0.05}	5891 ⁺⁸⁹ ₋₈₈	4.1 ^{+0.05} _{-0.05}	0.03 ^{+0.06} _{-0.06}	12.96	1.41	6.10	0.00
212009150	0.24 ^{+0.01} _{-0.01}	0.22 ^{+0.01} _{-0.01}	3293 ⁺⁴⁶ ₋₄₅	5.03 ^{+0.01} _{-0.01}	0.02 ^{+0.05} _{-0.06}	16.28	9.92	8.93	8.91
212036875	1.47 ^{+0.05} _{-0.05}	1.22 ^{+0.02} _{-0.02}	6394 ⁺⁵⁷ ₋₅₁	4.19 ^{+0.02} _{-0.02}	-0.21 ^{+0.03} _{-0.03}	10.91	3.23	12.44	1.37
212040382	2.33 ^{+0.25} _{-0.2}	1.32 ^{+0.11} _{-0.07}	6310 ⁺¹⁴⁶ ₋₁₄₁	3.83 ^{+0.07} _{-0.07}	-0.21 ^{+0.13} _{-0.12}	12.51	1.05	4.56	0.00
212041476	0.97 ^{+0.03} _{-0.03}	1.01 ^{+0.03} _{-0.04}	5791 ⁺⁷⁴ ₋₇₈	4.47 ^{+0.03} _{-0.03}	0.03 ^{+0.06} _{-0.06}	12.09	3.60	8.84	0.00
212058012	1.09 ^{+0.03} _{-0.03}	1.01 ^{+0.05} _{-0.05}	5920 ⁺¹⁰⁴ ₋₁₀₄	4.36 ^{+0.03} _{-0.03}	-0.06 ^{+0.08} _{-0.09}	11.07	4.77	12.98	0.00
212066407	2.0 ^{+0.18} _{-0.16}	1.2 ^{+0.07} _{-0.06}	5943 ⁺⁸⁸ ₋₈₇	3.92 ^{+0.05} _{-0.05}	-0.08 ^{+0.06} _{-0.05}	12.27	1.07	40.79	48.41
212072539	0.46 ^{+0.01} _{-0.01}	0.49 ^{+0.01} _{-0.01}	3804 ⁺⁷⁴ ₋₇₄	4.8 ^{+0.01} _{-0.01}	-0.1 ^{+0.19} _{-0.25}	15.13	5.99	2.77	0.69
212081533	0.49 ^{+0.01} _{-0.01}	0.51 ^{+0.01} _{-0.01}	4374 ⁺³⁸ ₋₃₄	4.76 ^{+0.01} _{-0.01}	-0.95 ^{+0.02} _{-0.02}	12.74	13.27	7.29	0.00
212088059	0.52 ^{+0.01} _{-0.01}	0.56 ^{+0.01} _{-0.01}	3779 ⁺³⁰ ₋₂₆	4.74 ^{+0.01} _{-0.01}	0.26 ^{+0.07} _{-0.07}	14.70	6.13	4.22	2.45
212099230	0.98 ^{+0.02} _{-0.02}	0.9 ^{+0.03} _{-0.03}	5469 ⁺⁶³ ₋₅₇	4.4 ^{+0.02} _{-0.02}	0.05 ^{+0.08} _{-0.08}	10.52	8.06	10.17	0.00
212132195	0.7 ^{+0.01} _{-0.01}	0.71 ^{+0.02} _{-0.02}	4801 ⁺³⁹ ₋₄₉	4.6 ^{+0.01} _{-0.01}	-0.18 ^{+0.08} _{-0.08}	11.68	9.44	4.98	0.00
212161956	0.63 ^{+0.02} _{-0.02}	0.66 ^{+0.03} _{-0.03}	4599 ⁺¹⁷⁸ ₋₁₅₂	4.65 ^{+0.02} _{-0.02}	-0.26 ^{+0.17} _{-0.21}	14.81	3.09	-1.92	0.00
212178066	1.2 ^{+0.02} _{-0.01}	1.2 ^{+0.04} _{-0.04}	6243 ⁺⁸⁹ ₋₉₄	4.36 ^{+0.02} _{-0.02}	0.08 ^{+0.08} _{-0.08}	6.75	28.33	10.59	0.00
212204403	0.85 ^{+0.02} _{-0.02}	0.83 ^{+0.02} _{-0.01}	5077 ⁺⁴⁰ ₋₃₉	4.5 ^{+0.02} _{-0.01}	0.13 ^{+0.05} _{-0.05}	12.33	4.93	6.94	0.00
212278644	1.47 ^{+0.14} _{-0.13}	1.14 ^{+0.06} _{-0.05}	5978 ⁺⁶⁴ ₋₆₅	4.16 ^{+0.07} _{-0.07}	0.03 ^{+0.02} _{-0.02}	14.00	1.04	-1.75	0.00
212297394	0.8 ^{+0.03} _{-0.03}	0.83 ^{+0.05} _{-0.04}	5171 ⁺¹⁷² ₋₁₃₀	4.55 ^{+0.03} _{-0.03}	-0.03 ^{+0.15} _{-0.16}	14.19	2.36	-2.45	0.00
212420823	0.49 ^{+0.0} _{-0.0}	0.54 ^{+0.01} _{-0.01}	4385 ⁺²⁹ ₋₃₁	4.78 ^{+0.01} _{-0.01}	-0.66 ^{+0.04} _{-0.04}	14.18	2.18	-3.28	0.00
212428509	1.29 ^{+0.06} _{-0.06}	0.88 ^{+0.03} _{-0.02}	5834 ⁺⁶⁸ ₋₅₄	4.17 ^{+0.04} _{-0.04}	-0.37 ^{+0.06} _{-0.06}	12.57	2.24	2.34	0.00
212435047	1.1 ^{+0.04} _{-0.04}	1.01 ^{+0.04} _{-0.04}	5842 ⁺⁸⁵ ₋₈₁	4.36 ^{+0.04} _{-0.04}	0.01 ^{+0.06} _{-0.06}	12.35	2.74	4.57	0.00
212440430	1.04 ^{+0.06} _{-0.05}	0.98 ^{+0.02} _{-0.02}	5789 ⁺⁴⁶ ₋₅₀	4.39 ^{+0.05} _{-0.04}	-0.02 ^{+0.03} _{-0.03}	13.31	2.01	-2.14	0.00
212495601	1.03 ^{+0.05} _{-0.05}	0.87 ^{+0.02} _{-0.01}	5666 ⁺⁴⁶ ₋₄₇	4.35 ^{+0.04} _{-0.04}	-0.19 ^{+0.02} _{-0.02}	13.82	1.59	-2.90	0.00

Table 3 – continued Summary of stellar parameters.

EPIC	R_{\star} [R_{\odot}]	M_{\star} [M_{\odot}]	T_{eff} [K]	$\log g$ [cgs]	[Fe/H] [dex]	K_p [mag]	π [mas]	GOF_AL ^a	D ^b
212543933	1.05 ^{+0.07} _{-0.06}	1.02 ^{+0.02} _{-0.02}	5769 ⁺³⁹ ₋₃₇	4.4 ^{+0.06} _{-0.06}	0.08 ^{+0.02} _{-0.02}	13.99	1.41	-2.83	0.00
212570977	1.12 ^{+0.07} _{-0.06}	1.05 ^{+0.04} _{-0.04}	5698 ⁺⁸⁷ ₋₉₁	4.36 ^{+0.06} _{-0.05}	0.24 ^{+0.05} _{-0.05}	13.94	1.40	-2.37	0.00
212587672	0.98 ^{+0.04} _{-0.03}	0.99 ^{+0.03} _{-0.04}	6004 ⁺⁷⁷ ₋₇₈	4.45 ^{+0.03} _{-0.04}	-0.18 ^{+0.06} _{-0.06}	12.20	3.10	3.61	0.00
212628098	0.88 ^{+0.03} _{-0.03}	0.77 ^{+0.02} _{-0.03}	4109 ⁺⁸⁵ ₋₁₁₅	4.44 ^{+0.03} _{-0.05}	-0.01 ^{+0.09} _{-0.09}	13.47	4.67	-5.25	0.00
212628477	1.35 ^{+0.07} _{-0.06}	1.0 ^{+0.2} _{-0.06}	5715 ⁺⁹⁵ ₋₉₇	4.2 ^{+0.03} _{-0.04}	-0.09 ^{+0.07} _{-0.07}	12.62	2.35	1.58	0.00
212634172	0.39 ^{+0.01} _{-0.01}	0.41 ^{+0.01} _{-0.01}	3431 ⁺⁴¹ ₋₄₈	4.86 ^{+0.01} _{-0.01}	0.32 ^{+0.08} _{-0.07}	15.26	9.89	12.53	15.65
212639319	2.56 ^{+0.22} _{-0.18}	1.39 ^{+0.08} _{-0.07}	5456 ⁺⁹⁵ ₋₉₃	3.77 ^{+0.04} _{-0.05}	0.26 ^{+0.05} _{-0.05}	12.42	1.29	15.23	4.68
212661144	1.0 ^{+0.06} _{-0.05}	0.96 ^{+0.08} _{-0.07}	5749 ⁺²⁰⁶ ₋₁₉₁	4.43 ^{+0.05} _{-0.06}	-0.03 ^{+0.17} _{-0.19}	13.74	1.86	-3.08	0.00
212690867	0.41 ^{+0.01} _{-0.01}	0.43 ^{+0.01} _{-0.01}	3713 ⁺³⁷ ₋₃₇	4.85 ^{+0.01} _{-0.01}	-0.13 ^{+0.09} _{-0.09}	15.30	6.34	3.76	1.88
212797028	1.77 ^{+0.13} _{-0.11}	1.14 ^{+0.05} _{-0.05}	5767 ⁺⁸⁷ ₋₇₈	4.0 ^{+0.05} _{-0.05}	0.1 ^{+0.06} _{-0.06}	13.11	1.15	-2.08	0.00
251319382	0.95 ^{+0.02} _{-0.02}	0.98 ^{+0.04} _{-0.04}	5791 ⁺⁸¹ ₋₈₁	4.47 ^{+0.03} _{-0.03}	-0.05 ^{+0.07} _{-0.07}	11.11	5.65	16.02	7.46
251554286	0.99 ^{+0.03} _{-0.03}	0.87 ^{+0.02} _{-0.02}	5698 ⁺⁵⁵ ₋₅₅	4.38 ^{+0.03} _{-0.03}	-0.21 ^{+0.04} _{-0.04}	12.10	3.70	2.84	0.00

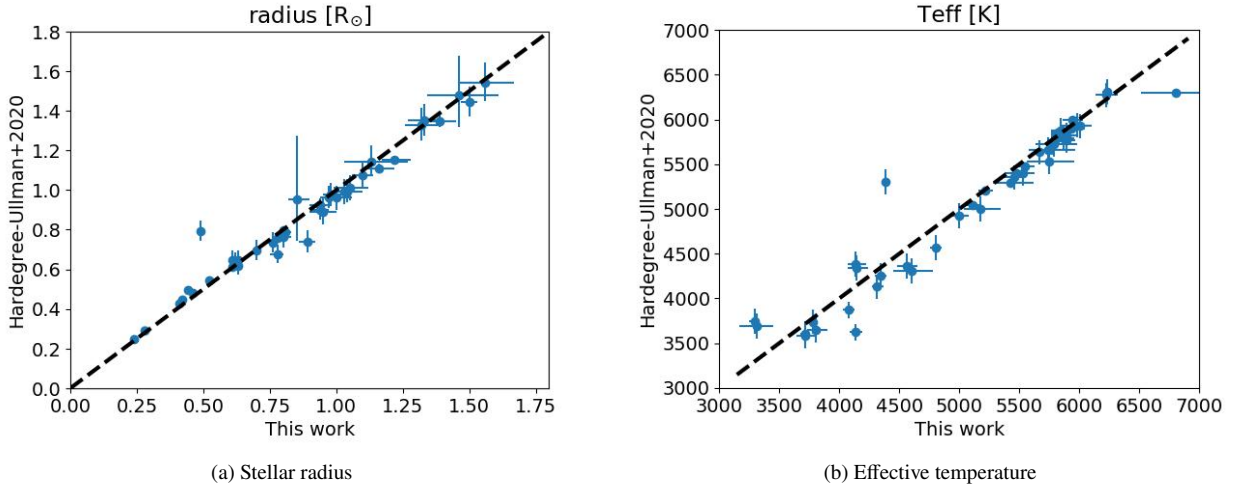


Figure 4. Comparison of stellar radius and T_{eff} derived from this work and reported in Hardegree-Ullman et al. (2020). The black dashed lines represent one-to-one correspondence ($x=y$). Our results are consistent with those of Hardegree-Ullman et al. (2020) at the 1- σ level.

where Δm is the difference in magnitude in the *Kepler* bandpass (Eq. 1, Livingston et al. 2018b). Assuming the signal originates from (i.e. planet orbits) the fainter secondary star, then the observed transit depth, δ' is scaled by γ to obtain the true transit depth, $\delta = \delta' \gamma = \delta' (1 + 10^{0.4 \Delta m})$.

Table 4 lists the dilution factors γ_{pri} and γ_{sec} , which assumed the signal originates from the primary or secondary star, respectively. Then, we identified which *Gaia* sources surrounding the target are bright enough to reproduce the measured transit depths. A common false positive scenario involves a faint (blended) eclipsing binary whose eclipses are diluted to levels that match the transit depth. To be conservative, we first assume a maximum eclipse depth of 100% (i.e., $\delta = 1$), so if $\delta' > \gamma^{-1}$, then the observed depth is too deep to have originated from the secondary star. If this conservative criterion is not satisfied, we then use Equation 21 in Seager & Mallén-Ornelas (2003) to compute the maximum radius ratio $R_p/R_{s, \text{max}}$ based on the transit shape and compare it with undiluted R_p/R_s . If $R_p/R_s > 1\sigma R_p/R_{s, \text{max}}$, then the observed radius is non-physical and hence the secondary star being the origin of the signal is ruled out. In Figure 3, the sources that are potential nearby eclipsing binaries (NEBs) and those we ruled out are indicated as red and orange circles, respectively. Of the 16 stars with nearby stars within the aperture, NEB scenarios in 9 stars are not completely ruled out. In such cases we cannot rule out NEBs, we

performed pixel level multi-aperture analysis to determine the actual source of the signal. For each target, we compared the transit depths of the phase-folded lightcurves created using apertures with different sizes available in the K2SFF pipeline. The power of pixel level multi-aperture analysis was also demonstrated by Cabrera et al. (2017), where they found two previously validated planets are actually false positives since they exhibited increased transit depths for larger aperture masks, suggesting that a nearby star was responsible for the eclipses. In some cases, a nearby fainter star a few pixels away from the target can be essentially excluded in the photometry using a small enough aperture. In general, we find no apparent difference between the transit depths using a large and a small aperture, implying that the target star is the source of the signal. In these cases, we used the lightcurves with large aperture including the nearby star in transit modeling (taking into account dilution) due to its higher photometric precision compared to the lightcurve produced using a small aperture excluding the nearby star. Similar to host stars with hints of binarity (see §3.2), we do not validate any planet candidates for which we cannot rule out all detected companions (either from *Gaia* or AO/speckle imaging) as the source of the signal. Finally, the companion radius reported in Table 5 is corrected for dilution using γ_{pri} in Table 4.

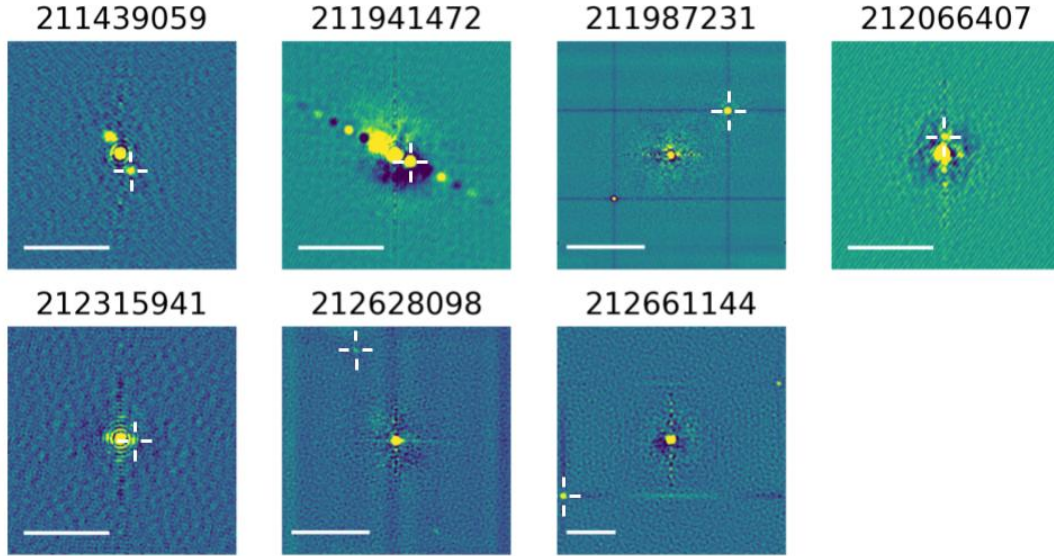


Figure 5. Reconstructed 832nm WIYN speckle images centered on the target stars with detected companions shown as a pair of bright points 180° apart. The white reticles mark the position angle of the companions but the actual position angle could be off by exactly 180° . North is at the top and east to the left. White bar in the lower left corner corresponds to $1''$.

3.4 Transit modeling

After the pre-processing step described in §2.1, we model the lightcurves similar to the procedure detailed in Livingston et al. (2018a) which we briefly summarize here. We adopted the analytic transit model (Mandel & Agol 2002) as implemented in the Python package *batman* (Kreidberg 2015) with a Gaussian likelihood function, and assuming a linear ephemeris and quadratic limb darkening. We set the following as free parameters: the orbital period P_{orb} , mid-transit time T_0 , scaled semi-major axis a/R_s , impact parameter b , and quadratic limb darkening coefficients in q -space (q_1 and q_2) as prescribed by Kipping (2013). We also fit the logarithm of the Gaussian errors ($\log \sigma$) and a constant out-of-transit baseline offset. We imposed Gaussian priors on q_1 and q_2 , with mean and standard deviation determined by Monte Carlo sampling an interpolated grid of the theoretical limb darkening coefficients (in the *Kepler* bandpass) tabulated by Claret et al. (2012) given T_{eff} , $[\text{Fe}/\text{H}]$, and $\log g$ of the host stars. This allows the uncertainties in host star T_{eff} , $\log g$, and $[\text{Fe}/\text{H}]$ (see Table 3) to propagate in the final estimate.

We used the Python package *emcee* (Foreman-Mackey et al. 2013) for Markov Chain Monte Carlo (MCMC) exploration of the posterior probability distribution using 100 "walkers" in a Gaussian ball around the least squares solution determined using the Python package *lmfit* (Newville et al. 2016). We ran MCMC for at least 2×10^4 steps and discarded the first 10^3 steps as "burn-in". To assess convergence, we checked that the acceptance fraction is between 0.01 and 0.4. We also estimated the integrated autocorrelation time (τ_{acf}) of the ensemble and verified that it is appropriate for the chain length. Finally, we visually inspect the MCMC chains in the trace plot and the posterior distributions of each model parameter to make sure they are well-mixed and uni-modal, respectively. We computed the autocorrelation time of each parameter to ensure that we collected thousands of effectively independent samples after discarding the burn-in steps. We report the median and 68% credible interval of the resulting marginalized posterior distributions in Table 5. We also computed the planet's equilibrium temperature (T_{eq}) using the

MCMC samples of the host star and planet directly, and assuming bond albedo=0.3 applicable for Neptune-like planets.

We also computed the stellar density by using Equation 4 of Kipping (2014), assuming circular orbits and $M_p \ll M_s$, where M_p and M_s are the masses of the planet and star, respectively. This is useful to check consistency with the bulk density computed using the stellar mass and radius derived in §3.2. More importantly, agreement between these two results is a sign that the transit signal comes from a planet, and it is not an astrophysical false positive. We also checked the effect of using the stellar density as a prior on the transit modeling and confirmed that adding it did not generally bias the resulting best-fit transit parameters. The *K2* lightcurves with the best-fit transit model are shown in Figure 6.

3.5 False positive probabilities

The concept of validation has been developed and calibrated over the years (e.g., Torres et al. 2011; Morton 2012; Díaz et al. 2014; Santerne et al. 2015; Morton et al. 2016; Giacalone et al. 2021). At its core, validating a transiting planet means statistically arguing that the data are much more likely to be explained by a planet than by an astrophysical false positive. Here we quantify the false positive probability (FPP) of each candidate by using the Python package *vespa*¹³ (Morton 2015b), which was developed as a tool for robust statistical validation of planet candidates identified by the *Kepler* mission (e.g., Morton 2012) and its successor *K2* (e.g., Crossfield et al. 2016; Livingston et al. 2018b; Mayo et al. 2018). *vespa* compares the likelihood of planetary scenario to the likelihoods of several astrophysical false positive scenarios involving eclipsing binaries (EBs), hierarchical triple systems (HEBs), background eclipsing binaries (BEBs), and the double-period cases of all these scenarios. The likelihoods and priors for each scenario are based on the shape of the transit signal, the star's location in the Galaxy,

¹³ <https://github.com/timothydmorton/VESPA>

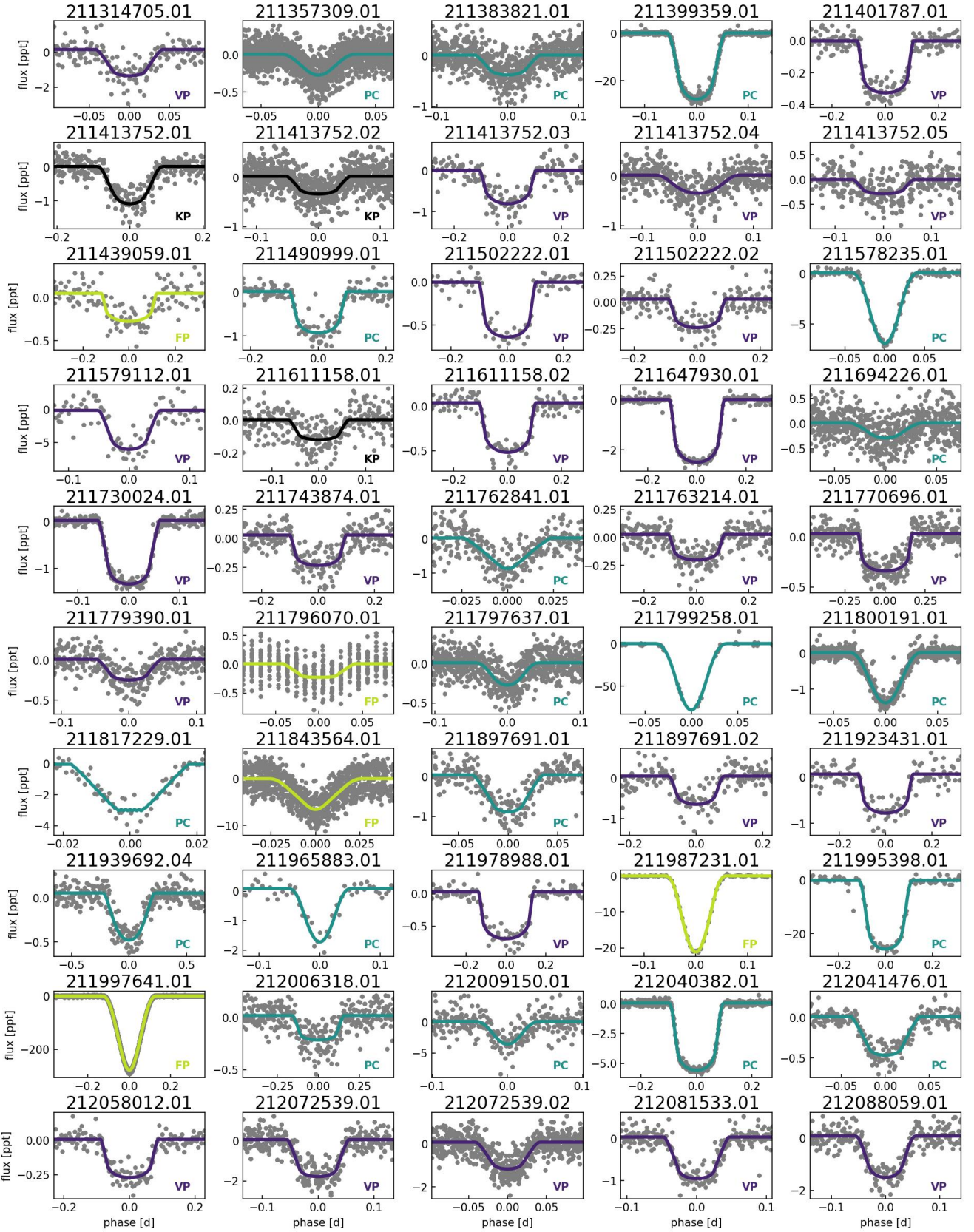


Figure 6. Best-fit transit model (colored line) superposed on the phase-folded lightcurve (gray points). Final dispositions in the lower right corner (VP=validated planet; PC=planet candidate; FP=false positive; KP=known planet).

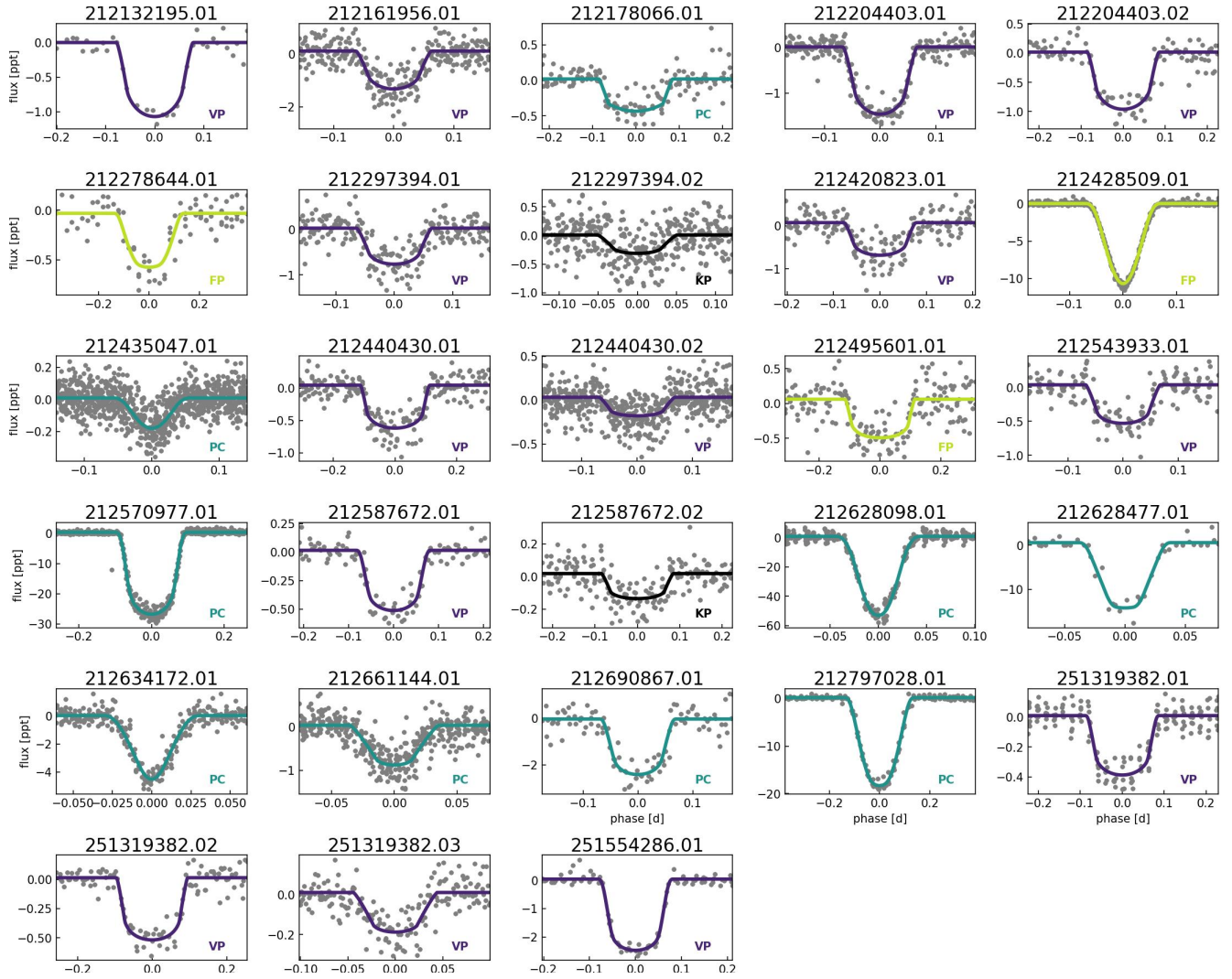


Figure 6 – *continued* Best-fit transit model (colored line) superposed on the phase-folded lightcurve (gray points). Final dispositions in the lower right corner (VP=validated planet; PC=planet candidate; FP=false positive; KP=known planet).

and single-, binary-, and triple-star model fits to the observed photometric and spectroscopic properties of the star generated using *isochrones*.

As additional constraints, we used the available AO/speckle contrast curves described in §2.3, the maximum aperture radius (*maxrad*)—interior to which the transit signal must be produced—and the maximum allowed depth of potential secondary eclipse (*secthresh*) estimated from the given lightcurves. Similar to Mayo et al. (2018), we computed *secthresh* by binning the phase-folded lightcurves by measuring the transit duration and taking thrice the value of the standard deviation of the mean in each bin. Effectively, we are asserting that we did not detect a secondary eclipse at any phase (not only at phase=0.5) at 3- σ level. We also experimented with the choice of *maxrad* between the largest and smallest aperture radius used for stars observed in multiple campaigns. We found that bigger *maxrad* results in higher probabilities for BEB likelihoods but ultimately did not significantly affect our final FPP. We list the likelihoods of false positive scenarios considered by *vespa* in Table A1. For a few targets with large proper motions, such as EPIC 211827229 shown in Figure 7, archival images are helpful to rule out background eclipsing binary as the origin of the signal.

Because the FPPs from *vespa* do not reflect multiplicity, we applied a "multiplicity boost", which effectively reduces the FPP for each candidate in a multi-planet system. Equations 8 & 9 in Lissauer et al. (2011) introduce a factor of 25 to the planet scenario prior for systems with two planets and a factor of 50 for systems of three or more candidates. These factors are based on the observed false positive rate for the *Kepler* field that is also applied in boosting FPP of multi-planet candidates found in *K2* fields (e.g. Vanderburg et al. 2016a; Mayo et al. 2018). Although Sinukoff et al. (2016) argues that such factor cannot be assumed to be the same as that for *K2*, given the different Galactic backgrounds and pointing characteristics of the observations, Castro González et al. (2020) computed very similar values between 28–40 based on early *K2* campaigns. Thus, we adapted a factor of 25 and 50 for two-planet and three or more planet systems, respectively. Such factors are already reflected into the final FPP in Table 5. We note, however, that none of the multi-planet candidates we validate in this work require this boost in order to meet our validation criterion of FPP < 1%.

Table 4. Systems with detected companions in AO/speckle (top), and *Gaia* DR2 (bottom) within or near the photometric aperture boundary ($r \lesssim 30''$).

EPIC	Δ_{K_p}	r ["]	γ_{pri}	γ_{sec}
211439059	1.07	0.23	1.37	3.68
211941472	0.32	0.20	1.74	2.34
211987231	1.70	0.94	1.21	5.77
212066407	4.06	0.22	1.02	43.07
212315941	1.29	0.07	1.30	4.28
212628098	2.39	1.65	1.11	10.05
212661144	2.85	2.94	1.07	14.87
211335816	3.24	7.65	1.05	20.75
211357309	2.25	18.94	1.13	8.92
211383821	6.86	19.15	1.00	554.16
211399359	3.83	12.35	1.03	35.01
211401787	6.81	26.31	1.00	529.45
211413752	5.83	4.70	1.00	215.07
211502222	9.62	20.22	1.00	7015.58
211578235	5.58	19.61	1.01	171.32
211611158	5.97	11.68	1.00	246.44
211765695	2.90	13.67	1.07	15.48
211770696	7.17	12.29	1.00	735.68
211797637	4.10	15.55	1.02	44.83
211826814	4.84	14.76	1.01	87.03
211995398	0.60	4.17	1.58	2.74
212058012	2.58	6.49	1.09	11.75
212088059	6.28	11.77	1.00	326.98
212099230	5.29	12.30	1.01	131.12
212161956	3.53	8.85	1.04	26.91
212178066	13.38	21.56	1.00	225299.47
212278644	6.88	11.67	1.00	564.19
212297394	6.21	24.20	1.00	305.79
212428509	3.33	1.09	1.05	22.52
212435047	7.08	12.00	1.00	678.40
212440430	6.08	6.00	1.00	271.20
212563850	1.77	9.67	1.20	6.11
212690867	0.88	18.93	1.44	3.26
212797028	5.99	13.27	1.00	249.67
251554286	4.41	9.85	1.02	59.12

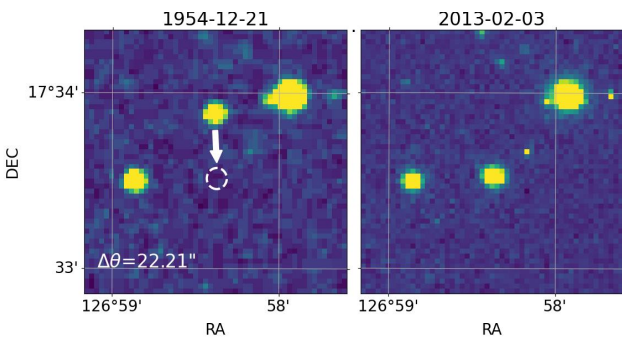


Figure 7. *POSS-I* (left) and *PanSTARRS-I* (right) sky survey images taken 59 years apart, long enough for EPIC 211817229 to have moved about $d\theta \approx 22''$ along the direction of the white arrow. The white circle shows a clear view along the line of sight to the position of the target in the right image, helpful to rule out a background eclipsing binary scenario.

3.6 Candidate dispositions

We followed a decision tree to assign the final disposition for each candidate. We began by checking if the signal is on-target using the dilution and the multi-aperture analyses (§3.3), and if there is no hint of binarity (§3.2). If there exists any nearby star that cannot be ruled out as a potential NEB, and if there is a hint of aperture-dependent depth variation, then the candidate is categorized as a planet candidate (PC). If the source of the signal is identified to be the nearby star as demonstrated in Figure 10, then the undiluted depth and hence true radius of the companion is derived using the actual host star radius (if known) and then its disposition is evaluated in a similar fashion.

As mentioned in §3.5, host stars with large Astrometric Goodness of Fit in the Along-Scan direction ($GOF_{AL} > 20$) and Astrometric Excess Noise ($D > 5$) are designated as false positive (FP) as in the cases of EPIC 211439059, EPIC 212534729, and EPIC 212703473 despite their final FPP < 1%. This is motivated by the fact that the presence of multiple stars biases the measurements of the planet's derived properties. We then took the final FPP (accounted for multiplicity) and adopted the standard criteria of < 1% and > 99% as potentially validated planet (VP) and FP, respectively. A candidate with $1\% < FPP < 99\%$ is designated as neither validated nor false positive, and thus remains a planet candidate similar to previous works (e.g., Montet et al. 2015; Crossfield et al. 2016; Morton et al. 2016; Dressing et al. 2017; Livingston et al. 2018a). Because giant planets, brown dwarfs, and low-mass stars are typically indistinguishable based on radius alone, we used a radius upper limit of $R_p < 8 R_{\oplus}$ to avoid validating any of the common false positives, similar to previous studies (e.g., Mayo et al. 2018; Giacalone et al. 2020). This radius roughly corresponds to the minimum radius of a brown dwarf (e.g., Sorahana et al. 2013; Carmichael et al. 2020) or an eclipsing dwarf star (e.g., Shporer et al. 2017). As a final check, we designate VP only to those candidates that have stellar density derived from transit modeling to be consistent within $3\text{-}\sigma$ with stellar density derived from isochrones. Those that are inconsistent by more than $3\text{-}\sigma$ are noted with "rho" in Table 5. The final disposition for each planet candidate is indicated in the last column of Table 5.

3.7 Multi-planet system stability

We validate the orbital solutions of the 6 multi-planet systems discussed in §4.3 by analyzing their orbital stability. For simplicity, we assumed the best-case scenario, namely zero (mutual) inclinations and zero eccentricities of the planetary orbits. We estimate the planetary masses from the observed radius using the MRExo package¹⁴, which performs non-parametric fitting of the mass-radius relation (Ning et al. 2018; Kanodia et al. 2019). Our dynamical stability pipeline is described as follows. For coplanar, nearly-circular two-planet systems, analytic tools provide sufficient understanding of dynamical stability to render N -body simulations unnecessary. Particularly, here we adopt the Hill stability criterion of Gladman (1993), which has been extensively validated by direct integration.

¹⁴ <https://github.com/shbhuk/mrexo>

Table 5. Candidate parameters and dispositions. (VP=validated planet; KP=known planet; PC=planet candidate; FP=false positive; LR=large radius; AO=bright nearby star detected in AO/speckle; GB=*Gaia* binary; A16=Adams et al. 2016; B16=Barros et al. 2016; P16=Pope et al. 2016; D17=Dressing et al. 2017; L18=Livingston et al. 2018; M18=Mayo et al. 2018; P18=Petigura et al. 2018; Y18=Yu et al. 2018; H19=Heller et al. 2019; K19=Kruse et al. 2019)

EPIC	T_0 [BKJD]	P [d]	R_p/R_\star [%]	a/R_\star	b	T_{14} [hr]	T_{eq} [K]	$R_p [R_\oplus]$	SNR	FPP	notes	disposition	ref
211314705.01	2307.225970 ^{+0.004008} _{-0.003737}	3.793306 ^{+0.000324} _{-0.000343}	3.53 ^{+0.17} _{-0.17}	19.05 ^{+0.21} _{-0.21}	0.24 ^{+0.17} _{-0.16}	1.53 ^{+0.04} _{-0.08}	543 ⁺⁸ ₋₉	1.56 ^{+0.08} _{-0.08}	20.49	0.00		VP	P16
211357309.01	2306.751359 ^{+0.000665} _{-0.000677}	0.463975 ^{+0.000000} _{-0.000000}	1.59 ^{+0.12} _{-0.05}	3.78 ^{+0.47} _{-1.04}	0.47 ^{+0.32} _{-0.32}	0.86 ^{+0.05} _{-0.04}	1269 ⁺¹⁸ ₋₁₅	0.86 ^{+0.07} _{-0.03}	72.92	0.05		PC	A16
211383821.01	2307.154894 ^{+0.001782} _{-0.001753}	1.567125 ^{+0.000003} _{-0.000003}	1.81 ^{+0.21} _{-0.08}	6.41 ^{+0.67} _{-1.77}	0.42 ^{+0.35} _{-0.29}	1.74 ^{+0.09} _{-0.08}	1005 ⁺¹⁵ ₋₁₃	1.24 ^{+0.14} _{-0.06}	25.67	0.03		PC	P16
211399359.01	2308.417493 ^{+0.000125} _{-0.000118}	3.114897 ^{+0.000001} _{-0.000001}	15.06 ^{+0.09} _{-0.08}	11.64 ^{+0.09} _{-0.16}	0.10 ^{+0.10} _{-0.07}	2.34 ^{+0.01} _{-0.01}	979 ⁺²⁰ ₋₂₂	12.94 ^{+0.40} _{-0.34}	479.01	0.00	LR	PC	P16
211401787.01	2318.064162 ^{+0.001517} _{-0.001464}	13.774798 ^{+0.000028} _{-0.000028}	1.69 ^{+0.08} _{-0.03}	21.76 ^{+1.56} _{-4.85}	0.38 ^{+0.32} _{-0.26}	4.57 ^{+0.08} _{-0.07}	969 ⁺⁹ ₋₉	2.77 ^{+0.14} _{-0.09}	57.88	0.00		VP	P16
211413752.01	2307.846650 ^{+0.002133} _{-0.002101}	9.327527 ^{+0.000021} _{-0.000020}	3.12 ^{+0.91} _{-0.22}	17.17 ^{+4.82} _{-9.46}	0.65 ^{+0.30} _{-0.45}	3.35 ^{+0.62} _{-0.11}	696 ⁺¹² ₋₁₃	2.69 ^{+0.77} _{-0.21}	141.74	–		KP	L18
211413752.02	2310.654276 ^{+0.002437} _{-0.002523}	2.151676 ^{+0.000005} _{-0.000006}	1.75 ^{+0.14} _{-0.06}	7.76 ^{+0.72} _{-1.84}	0.42 ^{+0.33} _{-0.30}	1.97 ^{+0.06} _{-0.05}	1136 ⁺¹⁸ ₋₁₉	1.50 ^{+0.12} _{-0.07}	34.08	–		KP	L18
211413752.03	2309.191739 ^{+0.003964} _{-0.003853}	26.270570 ^{+0.000105} _{-0.000109}	2.59 ^{+0.17} _{-0.08}	41.41 ^{+3.15} _{-8.33}	0.39 ^{+0.29} _{-0.27}	4.62 ^{+0.13} _{-0.11}	492 ⁺⁸ ₋₁₀	2.23 ^{+0.15} _{-0.09}	27.64	0.00		VP	K19
211413752.04	2310.974654 ^{+0.003182} _{-0.003300}	4.528598 ^{+0.000016} _{-0.000015}	1.73 ^{+0.16} _{-0.06}	12.57 ^{+1.18} _{-3.32}	0.40 ^{+0.35} _{-0.28}	2.57 ^{+0.12} _{-0.10}	888 ⁺¹⁶ ₋₁₅	1.49 ^{+0.14} _{-0.07}	74.65	0.05		VP	K19
211413752.05	2309.343959 ^{+0.004850} _{-0.004706}	6.131243 ^{+0.000032} _{-0.000033}	1.55 ^{+0.13} _{-0.08}	16.93 ^{+1.89} _{-4.06}	0.42 ^{+0.32} _{-0.28}	2.54 ^{+0.14} _{-0.13}	801 ⁺¹³ ₋₁₃	1.33 ^{+0.11} _{-0.08}	24.63	0.00		VP	K19
211439059.01	2313.521148 ^{+0.007066} _{-0.008427}	18.637056 ^{+0.000183} _{-0.000174}	1.68 ^{+0.14} _{-0.09}	24.57 ^{+2.88} _{-6.31}	0.42 ^{+0.33} _{-0.29}	5.32 ^{+0.33} _{-0.28}	610 ⁺¹⁸ ₋₂₁	2.15 ^{+0.21} _{-0.16}	13.76	0.00	GB	FP	P16
211490999.01	2313.329630 ^{+0.002489} _{-0.002464}	9.844401 ^{+0.000706} _{-0.000686}	2.86 ^{+0.18} _{-0.09}	19.68 ^{+1.63} _{-4.63}	0.40 ^{+0.32} _{-0.27}	3.64 ^{+0.12} _{-0.10}	799 ⁺¹⁹ ₋₂₄	2.96 ^{+0.21} _{-0.16}	36.86	0.01		PC	P16
211502222.01	3280.304754 ^{+0.002330} _{-0.002335}	22.996591 ^{+0.001848} _{-0.001859}	2.35 ^{+0.11} _{-0.07}	37.87 ^{+2.65} _{-7.38}	0.37 ^{+0.30} _{-0.25}	4.43 ^{+0.10} _{-0.09}	673 ⁺¹² ₋₁₁	2.72 ^{+0.14} _{-0.10}	33.14	0.00		VP	Y18
211502222.02	3267.920192 ^{+0.005312} _{-0.005582}	9.398977 ^{+0.001506} _{-0.001348}	1.55 ^{+0.12} _{-0.07}	16.76 ^{+1.93} _{-4.78}	0.43 ^{+0.34} _{-0.29}	3.92 ^{+0.22} _{-0.19}	909 ⁺¹⁴ ₋₁₄	1.79 ^{+0.14} _{-0.10}	20.63	0.00		VP	This work
211578235.01	2314.979746 ^{+0.000259} _{-0.000261}	11.007605 ^{+0.000004} _{-0.000004}	12.95 ^{+5.24} _{-3.07}	30.60 ^{+2.90} _{-1.51}	0.98 ^{+0.07} _{-0.06}	1.56 ^{+0.03} _{-0.05}	874 ⁺³⁴ ₋₃₅	16.49 ^{+6.44} _{-4.00}	266.82	0.71	LR	PC	B16
211579112.01	2323.420746 ^{+0.002160} _{-0.002168}	17.706320 ^{+0.000063} _{-0.000063}	7.07 ^{+0.33} _{-0.31}	66.30 ^{+2.39} _{-2.60}	0.39 ^{+0.13} _{-0.20}	2.03 ^{+0.09} _{-0.10}	266 ⁺⁵ ₋₈	2.20 ^{+0.19} _{-0.15}	17.04	0.00		VP	P16
211611158.01	2311.727092 ^{+0.005898} _{-0.005466}	10.616384 ^{+0.000069} _{-0.000074}	1.11 ^{+0.06} _{-0.06}	21.50 ^{+0.85} _{-0.92}	0.74 ^{+0.05} _{-0.05}	2.60 ^{+0.17} _{-0.18}	809 ⁺²² ₋₂₅	1.15 ^{+0.07} _{-0.07}	16.71	–		KP	M18
211611158.02	2326.157391 ^{+0.002498} _{-0.002358}	52.713494 ^{+0.000155} _{-0.000164}	2.32 ^{+0.05} _{-0.05}	62.62 ^{+2.50} _{-2.69}	0.73 ^{+0.03} _{-0.03}	4.64 ^{+0.08} _{-0.08}	477 ⁺¹⁴ ₋₁₇	2.39 ^{+0.09} _{-0.09}	48.91	0.02		VP	M18
211647930.01	3264.395983 ^{+0.000766} _{-0.000749}	14.759287 ^{+0.000243} _{-0.000240}	4.61 ^{+0.10} _{-0.05}	23.06 ^{+0.72} _{-2.14}	0.26 ^{+0.23} _{-0.18}	4.96 ^{+0.05} _{-0.04}	826 ⁺¹⁴ ₋₁₇	6.18 ^{+0.28} _{-0.25}	113.06	0.00		VP	Y18
211694226.01	2342.946754 ^{+0.002181} _{-0.002209}	1.918518 ^{+0.000006} _{-0.000006}	1.61 ^{+0.18} _{-0.13}	12.01 ^{+2.49} _{-3.32}	0.42 ^{+0.35} _{-0.30}	1.09 ^{+0.14} _{-0.14}	816 ⁺¹⁶ ₋₂₃	1.08 ^{+0.13} _{-0.10}	13.54	0.09		PC	D17
211730024.01	3263.810228 ^{+0.000550} _{-0.000536}	5.113981 ^{+0.000061} _{-0.000062}	3.43 ^{+0.18} _{-0.05}	15.35 ^{+1.09} _{-3.58}	0.38 ^{+0.33} _{-0.26}	2.46 ^{+0.06} _{-0.03}	1380 ⁺³⁴ ₋₃₀	5.65 ^{+0.36} _{-0.28}	133.98	0.00		VP	Y18
211743874.01	2315.209626 ^{+0.002700} _{-0.002774}	12.283211 ^{+0.000051} _{-0.000051}	1.51 ^{+0.08} _{-0.05}	20.30 ^{+1.76} _{-4.76}	0.40 ^{+0.31} _{-0.28}	4.31 ^{+0.13} _{-0.12}	949 ⁺²¹ ₋₂₆	2.21 ^{+0.18} _{-0.14}	24.89	0.00		VP	P16
211762841.01	2307.265782 ^{+0.000812} _{-0.000828}	1.565010 ^{+0.000002} _{-0.000002}	2.89 ^{+0.29} _{-0.16}	16.94 ^{+2.87} _{-4.05}	0.43 ^{+0.31} _{-0.28}	0.65 ^{+0.06} _{-0.08}	931 ⁺¹³ ₋₁₃	1.91 ^{+0.19} _{-0.12}	21.45	0.13		PC	D17
211763214.01	2313.585567 ^{+0.004276} _{-0.004476}	21.194733 ^{+0.000108} _{-0.000107}	1.40 ^{+0.10} _{-0.05}	32.37 ^{+2.92} _{-8.35}	0.41 ^{+0.33} _{-0.28}	4.65 ^{+0.16} _{-0.14}	569 ⁺¹⁵ ₋₂₂	1.22 ^{+0.09} _{-0.05}	22.34	0.00		VP	P16
211770696.01	2312.963531 ^{+0.002514} _{-0.002528}	16.273563 ^{+0.000054} _{-0.000053}	1.80 ^{+0.10} _{-0.04}	15.39 ^{+1.13} _{-3.59}	0.38 ^{+0.32} _{-0.26}	7.64 ^{+0.14} _{-0.11}	850 ⁺¹⁹ ₋₁₈	2.62 ^{+0.19} _{-0.14}	41.74	0.00		VP	P16

Table 5 – continued Candidate parameters and dispositions.

EPIC	T_0 [BKJD]	P [d]	R_p/R_\star [%]	a/R_\star	b	T_{14} [hr]	T_{eq} [K]	R_p [R_\oplus]	SNR	FPP	notes	disposition	ref
211779390.01	2308.526349 ^{+0.001912} _{-0.001839}	3.850614 ^{+0.000012} _{-0.000012}	1.48 ^{+0.15} _{-0.07}	15.13 ^{+1.75} _{-4.06}	0.42 ^{+0.34} _{-0.29}	1.78 ^{+0.11} _{-0.10}	783 ⁺¹² ₋₁₄	1.03 ^{+0.11} _{-0.05}	21.05	0.00		VP	P16
211796070.01	2307.731014 ^{+0.002660} _{-0.002404}	1.889933 ^{+0.000007} _{-0.000007}	1.44 ^{+0.09} _{-0.07}	8.83 ^{+1.23} _{-2.28}	0.42 ^{+0.33} _{-0.29}	1.50 ^{+0.13} _{-0.12}	1371 ⁺⁵⁷ ₋₆₃	1.40 ^{+0.10} _{-0.08}	15.16	1.00		FP	B16
211797637.01	2306.788585 ^{+0.002729} _{-0.002963}	1.640772 ^{+0.000112} _{-0.000102}	1.62 ^{+0.13} _{-0.09}	10.09 ^{+2.04} _{-3.24}	0.45 ^{+0.35} _{-0.31}	1.11 ^{+0.15} _{-0.14}	1315 ⁺⁵⁹ ₋₅₂	1.34 ^{+0.15} _{-0.08}	53.49	0.34		PC	B16
211799258.01	2320.146470 ^{+0.000338} _{-0.000330}	19.533884 ^{+0.000009} _{-0.000009}	27.02 ^{+1.82} _{-1.52}	125.14 ^{+16.96} _{-9.74}	0.59 ^{+0.11} _{-0.25}	1.34 ^{+0.06} _{-0.07}	326 ⁺⁵ ₋₇	13.04 ^{+0.95} _{-0.82}	112.72	0.71	LR	PC	D17
211800191.01	2307.749483 ^{+0.000190} _{-0.000208}	1.106170 ^{+0.000000} _{-0.000000}	4.79 ^{+2.51} _{-0.46}	3.01 ^{+0.47} _{-0.32}	0.96 ^{+0.04} _{-0.02}	1.22 ^{+0.04} _{-0.08}	2011 ⁺⁴² ₋₄₆	6.42 ^{+3.40} _{-0.75}	329.65	0.07		PC	P16
211817229.01	2307.694394 ^{+0.000563} _{-0.000557}	4.353783 ^{+0.000003} _{-0.000003}	6.55 ^{+0.58} _{-0.41}	86.19 ^{+16.61} _{-22.23}	0.41 ^{+0.33} _{-0.29}	0.37 ^{+0.06} _{-0.05}	348 ⁺² ₋₂	1.14 ^{+0.10} _{-0.07}	37.80	0.09		PC	D17
211843564.01	2307.077984 ^{+0.000425} _{-0.000489}	0.452018 ^{+0.000000} _{-0.000000}	7.93 ^{+2.11} _{-0.42}	4.96 ^{+0.74} _{-1.95}	0.49 ^{+0.40} _{-0.35}	0.68 ^{+0.10} _{-0.05}	1345 ⁺²³ ₋₃₁	5.12 ^{+1.30} _{-0.37}	70.96	0.20	GB	FP	K19
211897691.01	2309.493095 ^{+0.000192} _{-0.001177}	5.750534 ^{+0.000007} _{-0.000007}	2.81 ^{+0.25} _{-0.09}	33.89 ^{+3.12} _{-8.35}	0.41 ^{+0.32} _{-0.29}	1.22 ^{+0.05} _{-0.04}	761 ⁺¹⁴ ₋₂₀	2.23 ^{+0.20} _{-0.12}	44.28	0.07	rho	PC	P16
211897691.02	2320.004667 ^{+0.004642} _{-0.005128}	19.507428 ^{+0.000116} _{-0.000113}	2.44 ^{+0.23} _{-0.12}	40.71 ^{+4.50} _{-11.08}	0.44 ^{+0.33} _{-0.30}	3.40 ^{+0.18} _{-0.16}	508 ⁺¹² ₋₁₂	1.92 ^{+0.19} _{-0.12}	34.81	0.10		VP	K19
211923431.01	2310.815863 ^{+0.002975} _{-0.003102}	29.740451 ^{+0.000169} _{-0.000161}	2.68 ^{+0.17} _{-0.10}	40.80 ^{+3.40} _{-9.36}	0.39 ^{+0.31} _{-0.27}	5.29 ^{+0.19} _{-0.15}	606 ⁺³¹ ₋₃₆	3.36 ^{+0.44} _{-0.32}	23.52	0.00		VP	P16
211939692.04	2333.057118 ^{+0.006513} _{-0.006699}	26.855455 ^{+0.000193} _{-0.000186}	3.24 ^{+1.31} _{-0.50}	5.96 ^{+0.73} _{-0.55}	0.98 ^{+0.02} _{-0.01}	10.77 ^{+0.39} _{-0.48}	804 ⁺³² ₋₄₂	4.91 ^{+1.97} _{-0.76}	95.22	0.86		PC	K19
211965883.01	2313.496997 ^{+0.002648} _{-0.002570}	21.110323 ^{+0.001461} _{-0.001397}	3.86 ^{+2.36} _{-0.27}	90.71 ^{+19.45} _{-55.17}	0.57 ^{+0.40} _{-0.39}	1.58 ^{+0.37} _{-0.14}	414 ⁺⁵ ₋₆	2.56 ^{+1.62} _{-0.19}	121.03	0.20		PC	P16
211978988.01	2319.708694 ^{+0.002195} _{-0.002083}	36.552551 ^{+0.000127} _{-0.000122}	2.51 ^{+0.17} _{-0.07}	42.13 ^{+3.55} _{-10.63}	0.41 ^{+0.32} _{-0.28}	6.25 ^{+0.17} _{-0.11}	598 ⁺¹⁶ ₋₁₅	3.21 ^{+0.25} _{-0.19}	45.54	0.00		VP	M18
211987231.01	2308.813645 ^{+0.000170} _{-0.000172}	17.035141 ^{+0.000070} _{-0.000069}	29.39 ^{+3.60} _{-4.71}	40.32 ^{+0.36} _{-0.27}	1.07 ^{+0.04} _{-0.06}	2.35 ^{+0.02} _{-0.02}	866 ⁺³⁰ ₋₄₅	56.30 ^{+8.74} _{-9.62}	3162.20	0.99	LR,GB	FP	B16
211995398.01	2336.854100 ^{+0.001240} _{-0.001254}	32.579267 ^{+0.000066} _{-0.000067}	14.96 ^{+0.50} _{-0.45}	51.19 ^{+4.75} _{-5.01}	0.45 ^{+0.15} _{-0.26}	5.14 ^{+0.17} _{-0.14}	580 ⁺²⁸ ₋₃₈	29.88 ^{+3.95} _{-3.35}	67.94	0.00	LR	PC	P16
211997641.01	3263.517490 ^{+0.0000156} _{-0.000099}	1.744545 ^{+0.000000} _{-0.000000}	63.11 ^{+8.98} _{-3.22}	3.46 ^{+0.15} _{-0.05}	0.75 ^{+0.13} _{-0.05}	5.92 ^{+0.08} _{-0.09}	2534 ⁺¹⁵⁴ ₋₁₇₈	179.37 ^{+31.30} _{-24.23}	8429.32	0.99	LR	FP	Y18
212006318.01	2314.327580 ^{+0.006214} _{-0.007226}	14.457821 ^{+0.000149} _{-0.000146}	1.41 ^{+0.12} _{-0.07}	15.20 ^{+1.72} _{-4.36}	0.44 ^{+0.33} _{-0.30}	6.65 ^{+0.34} _{-0.33}	936 ⁺³⁰ ₋₃₄	2.41 ^{+0.28} _{-0.20}	33.81	0.02		PC	P16
212009150.01	2312.162629 ^{+0.002507} _{-0.002465}	6.833191 ^{+0.000022} _{-0.000021}	5.60 ^{+1.07} _{-0.37}	40.03 ^{+8.40} _{-18.34}	0.40 ^{+0.40} _{-0.34}	1.22 ^{+0.22} _{-0.15}	344 ⁺³ ₋₄	1.47 ^{+0.30} _{-0.11}	49.97	0.10		PC	K19
212040382.01	3266.349509 ^{+0.000271} _{-0.000270}	4.445602 ^{+0.000028} _{-0.000029}	7.32 ^{+0.06} _{-0.07}	6.54 ^{+0.28} _{-0.23}	0.68 ^{+0.03} _{-0.04}	4.37 ^{+0.03} _{-0.04}	1764 ⁺⁷⁴ ₋₈₄	18.58 ^{+1.97} _{-1.64}	451.26	0.02	LR	PC	Y18
212041476.01	3262.559797 ^{+0.001203} _{-0.001199}	2.783676 ^{+0.000073} _{-0.000072}	2.03 ^{+0.12} _{-0.06}	14.50 ^{+1.22} _{-3.43}	0.40 ^{+0.32} _{-0.27}	1.38 ^{+0.05} _{-0.04}	1280 ⁺²² ₋₂₃	2.16 ^{+0.14} _{-0.09}	42.77	0.00	rho	PC	Y18
212058012.01	3266.107260 ^{+0.002390} _{-0.002546}	11.561052 ^{+0.000690} _{-0.000668}	1.55 ^{+0.10} _{-0.04}	21.96 ^{+2.02} _{-5.36}	0.42 ^{+0.31} _{-0.29}	3.73 ^{+0.10} _{-0.08}	861 ⁺¹⁴ ₋₁₅	2.03 ^{+0.13} _{-0.09}	37.15	0.01		VP	Y18
212072539.01	2311.624554 ^{+0.001285} _{-0.001309}	7.676972 ^{+0.000012} _{-0.000012}	4.02 ^{+0.19} _{-0.10}	26.11 ^{+1.88} _{-5.92}	0.36 ^{+0.33} _{-0.25}	2.20 ^{+0.08} _{-0.07}	465 ⁺⁷ ₋₇	2.02 ^{+0.10} _{-0.07}	50.40	0.00		VP	Y18
212072539.02	2308.324970 ^{+0.001208} _{-0.001231}	2.787174 ^{+0.000004} _{-0.000004}	3.29 ^{+0.30} _{-0.11}	13.47 ^{+1.69} _{-4.14}	0.48 ^{+0.33} _{-0.32}	1.46 ^{+0.08} _{-0.05}	653 ⁺¹⁰ ₋₁₂	1.65 ^{+0.16} _{-0.08}	62.62	0.04		VP	K19
212081533.01	3262.747731 ^{+0.001269} _{-0.001250}	3.355850 ^{+0.000091} _{-0.000093}	2.95 ^{+0.19} _{-0.09}	13.70 ^{+1.25} _{-3.53}	0.41 ^{+0.33} _{-0.28}	1.76 ^{+0.07} _{-0.05}	722 ⁺⁷ ₋₁₀	1.59 ^{+0.10} _{-0.05}	43.44	0.00		VP	Y18
212088059.01	2308.710348 ^{+0.001423} _{-0.001468}	10.367437 ^{+0.000020} _{-0.000019}	3.67 ^{+0.35} _{-0.13}	36.12 ^{+3.76} _{-10.25}	0.43 ^{+0.34} _{-0.30}	2.08 ^{+0.11} _{-0.08}	437 ⁺⁴ ₋₅	2.11 ^{+0.20} _{-0.09}	50.61	0.00		VP	P16
212132195.01	2331.390197 ^{+0.002081} _{-0.002164}	26.201446 ^{+0.003331} _{-0.003124}	2.97 ^{+0.25} _{-0.11}	56.68 ^{+5.27} _{-13.31}	0.42 ^{+0.31} _{-0.28}	3.33 ^{+0.12} _{-0.10}	450 ⁺⁵ ₋₅	2.26 ^{+0.19} _{-0.10}	25.59	0.00		VP	P16
212161956.01	2307.699277 ^{+0.001927} _{-0.001812}	7.187257 ^{+0.000020} _{-0.000021}	3.35 ^{+0.09} _{-0.09}	21.52 ^{+0.37} _{-0.37}	0.21 ^{+0.13} _{-0.14}	2.57 ^{+0.06} _{-0.07}	640 ⁺²⁰ ₋₂₁	2.41 ^{+0.11} _{-0.10}	27.59	0.00		VP	P16
212178066.01	3262.901443 ^{+0.003040} _{-0.003115}	15.611913 ^{+0.000393} _{-0.000412}	1.98 ^{+0.15} _{-0.09}	29.57 ^{+3.14} _{-7.87}	0.43 ^{+0.32} _{-0.30}	3.72 ^{+0.16} _{-0.14}	835 ⁺⁸ ₋₉	2.97 ^{+0.29} _{-0.17}	20.02	0.00	saturate	PC	Y18
212204403.01	3263.716772 ^{+0.000995} _{-0.001053}	4.688418 ^{+0.000119} _{-0.000117}	3.50 ^{+0.25} _{-0.08}	12.55 ^{+0.93} _{-2.62}	0.39 ^{+0.30} _{-0.27}	2.75 ^{+0.07} _{-0.04}	908 ⁺¹² ₋₁₁	3.26 ^{+0.22} _{-0.11}	75.18	0.00		VP	Y18
212204403.02	3271.435651 ^{+0.003152} _{-0.003022}	12.550171 ^{+0.001018} _{-0.001057}	2.87 ^{+0.24} _{-0.11}	24.47 ^{+2.35} _{-6.03}	0.43 ^{+0.31} _{-0.30}	3.68 ^{+0.14} _{-0.11}	655 ⁺⁷ ₋₉	2.67 ^{+0.23} _{-0.11}	28.30	0.00		VP	Y18
212278644.01	2394.558248 ^{+0.014831} _{-0.014570}	12.421322 ^{+0.005559} _{-0.004657}	2.11 ^{+0.27} _{-0.14}	17.50 ^{+3.29} _{-7.33}	0.49 ^{+0.38} _{-0.34}	4.84 ^{+0.64} _{-0.46}	965 ⁺³⁴ ₋₃₉	3.42 ^{+0.60} _{-0.39}	38.97	1.00		FP	P16

Table 5 – *continued* Candidate parameters and dispositions.

EPIC	T_0 [BKJD]	P [d]	R_p/R_\star [%]	a/R_\star	b	T_{14} [hr]	T_{eq} [K]	R_p [R_\oplus]	SNR	FPP	notes	disposition	ref
212297394.01	2389.478879 ^{+0.003648} _{-0.003472}	5.213965 ^{+0.000442} _{-0.000442}	2.58 ^{+0.18} _{-0.11}	14.45 ^{+1.25} _{-3.23}	0.39 ^{+0.32} _{-0.27}	2.62 ^{+0.11} _{-0.11}	866 ⁺²⁷ ₋₃₇	2.27 ^{+0.19} _{-0.14}	21.14	0.00		VP	P16
212297394.02	2384.963190 ^{+0.004892} _{-0.004738}	2.289363 ^{+0.000232} _{-0.000251}	1.69 ^{+0.12} _{-0.12}	8.53 ^{+1.18} _{-1.79}	0.41 ^{+0.29} _{-0.26}	1.88 ^{+0.17} _{-0.16}	1149 ⁺⁴³ ₋₄₄	1.48 ^{+0.13} _{-0.11}	11.89	–		KP	H19
212420823.01	2386.127431 ^{+0.003865} _{-0.003894}	9.032178 ^{+0.000874} _{-0.000874}	2.55 ^{+0.18} _{-0.12}	19.99 ^{+1.94} _{-4.52}	0.40 ^{+0.31} _{-0.27}	3.25 ^{+0.15} _{-0.14}	518 ⁺⁵ ₋₄	1.38 ^{+0.10} _{-0.07}	23.75	0.00		VP	P16
212428509.01	2386.832645 ^{+0.000130} _{-0.000131}	5.335929 ^{+0.000001} _{-0.000001}	23.57 ^{+0.72} _{-1.28}	8.66 ^{+0.04} _{-0.04}	1.08 ^{+0.01} _{-0.02}	2.84 ^{+0.01} _{-0.01}	1218 ⁺²⁸ ₋₂₈	34.37 ^{+2.11} _{-2.28}	3989.14	0.99	LR	FP	P18
212435047.01	2385.443969 ^{+0.002187} _{-0.002349}	1.115494 ^{+0.000063} _{-0.000061}	1.26 ^{+1.21} _{-0.08}	4.33 ^{+1.08} _{-2.98}	0.62 ^{+0.38} _{-0.42}	1.65 ^{+0.57} _{-0.14}	1860 ⁺³³ ₋₃₅	1.54 ^{+1.49} _{-0.13}	172.91	0.13		PC	P16
212440430.01	2395.164968 ^{+0.002851} _{-0.002858}	19.991944 ^{+0.000123} _{-0.000194}	2.39 ^{+0.20} _{-0.09}	28.71 ^{+2.95} _{-8.21}	0.45 ^{+0.33} _{-0.29}	4.94 ^{+0.19} _{-0.20}	687 ⁺¹⁶ ₋₁₈	2.74 ^{+0.25} _{-0.18}	33.77	0.00		VP	P16
212440430.02	2386.277628 ^{+0.003444} _{-0.003308}	4.163873 ^{+0.000022} _{-0.000023}	1.35 ^{+0.10} _{-0.08}	10.68 ^{+1.20} _{-2.62}	0.41 ^{+0.32} _{-0.28}	2.75 ^{+0.16} _{-0.16}	1158 ⁺²⁹ ₋₃₄	1.54 ^{+0.15} _{-0.11}	16.67	0.00		VP	This work
212495601.01	2396.654065 ^{+0.004748} _{-0.004464}	21.674345 ^{+0.000160} _{-0.000165}	2.19 ^{+0.15} _{-0.10}	30.45 ^{+2.90} _{-7.50}	0.41 ^{+0.32} _{-0.28}	5.10 ^{+0.22} _{-0.20}	665 ⁺¹⁶ ₋₁₉	2.47 ^{+0.21} _{-0.17}	15.25	1.00		FP	P16
212543933.01	2390.495191 ^{+0.002614} _{-0.002604}	7.806164 ^{+0.000673} _{-0.000623}	2.21 ^{+0.13} _{-0.09}	20.20 ^{+1.80} _{-4.36}	0.39 ^{+0.30} _{-0.27}	2.78 ^{+0.12} _{-0.11}	934 ⁺²⁸ ₋₃₂	2.54 ^{+0.25} _{-0.19}	23.08	0.00		VP	P16
212570977.01	2390.894185 ^{+0.000333} _{-0.000329}	8.853066 ^{+0.000004} _{-0.000004}	14.98 ^{+0.20} _{-0.16}	17.95 ^{+0.60} _{-0.69}	0.29 ^{+0.11} _{-0.16}	4.20 ^{+0.05} _{-0.04}	912 ⁺³² ₋₂₉	18.34 ^{+1.22} _{-1.07}	295.58	0.20	LR	PC	P16
212587672.01	2404.042492 ^{+0.001902} _{-0.001818}	23.228555 ^{+0.000068} _{-0.000071}	2.15 ^{+0.17} _{-0.07}	50.74 ^{+5.07} _{-15.28}	0.43 ^{+0.35} _{-0.30}	3.25 ^{+0.13} _{-0.09}	658 ⁺¹³ ₋₁₄	2.32 ^{+0.19} _{-0.12}	46.10	0.01		VP	P16
212587672.02	2394.644991 ^{+0.004543} _{-0.004448}	15.280780 ^{+0.000121} _{-0.000116}	1.17 ^{+0.09} _{-0.07}	30.75 ^{+3.74} _{-8.15}	0.43 ^{+0.33} _{-0.29}	3.46 ^{+0.20} _{-0.21}	756 ⁺¹⁴ ₋₁₅	1.26 ^{+0.11} _{-0.09}	14.56	–		KP	H19
212628098.01	2390.347813 ^{+0.000248} _{-0.000257}	4.352495 ^{+0.000002} _{-0.000002}	23.27 ^{+1.27} _{-0.87}	20.86 ^{+1.34} _{-1.22}	0.69 ^{+0.07} _{-0.07}	1.63 ^{+0.05} _{-0.06}	777 ⁺¹¹ ₋₁₀	24.80 ^{+1.81} _{-1.30}	229.66	0.61	LR	PC	P18
212628477.01	3347.727411 ^{+0.001377} _{-0.001341}	15.423327 ^{+0.000580} _{-0.000550}	11.62 ^{+1.08} _{-0.71}	90.89 ^{+11.67} _{-23.65}	0.43 ^{+0.33} _{-0.29}	1.33 ^{+0.16} _{-0.10}	835 ⁺¹⁸ ₋₂₀	17.17 ^{+1.98} _{-1.39}	47.84	0.53	LR	PC	This work
212634172.01	2384.597110 ^{+0.000405} _{-0.000407}	2.851687 ^{+0.000002} _{-0.000002}	6.39 ^{+0.78} _{-0.19}	27.20 ^{+2.96} _{-8.99}	0.44 ^{+0.37} _{-0.31}	0.78 ^{+0.07} _{-0.04}	555 ⁺⁵ ₋₅	2.75 ^{+0.30} _{-0.11}	198.53	0.19		PC	K19
212661144.01	2385.909593 ^{+0.001217} _{-0.001215}	2.458749 ^{+0.000004} _{-0.000004}	2.81 ^{+0.18} _{-0.10}	14.78 ^{+1.45} _{-3.74}	0.40 ^{+0.34} _{-0.28}	1.20 ^{+0.06} _{-0.06}	1357 ⁺⁶⁰ ₋₅₈	3.31 ^{+0.30} _{-0.22}	43.10	0.01		PC	D17
212690867.01	2396.603761 ^{+0.002469} _{-0.002550}	25.856312 ^{+0.000090} _{-0.000088}	4.53 ^{+0.26} _{-0.16}	68.44 ^{+6.84} _{-15.84}	0.42 ^{+0.30} _{-0.29}	2.77 ^{+0.14} _{-0.12}	290 ⁺³ ₋₃	2.91 ^{+0.18} _{-0.12}	28.58	0.59		PC	D17
212797028.01	2397.464819 ^{+0.000578} _{-0.000580}	29.982306 ^{+0.000027} _{-0.000028}	14.37 ^{+0.15} _{-0.13}	28.98 ^{+0.41} _{-0.41}	0.84 ^{+0.01} _{-0.01}	6.12 ^{+0.06} _{-0.06}	763 ⁺²⁶ ₋₂₆	27.82 ^{+2.08} _{-1.81}	528.48	0.55	LR	PC	P18
251319382.01	3265.716929 ^{+0.002711} _{-0.002885}	8.234885 ^{+0.000508} _{-0.000475}	1.85 ^{+0.12} _{-0.05}	16.35 ^{+1.46} _{-4.07}	0.41 ^{+0.32} _{-0.28}	3.59 ^{+0.11} _{-0.09}	885 ⁺¹² ₋₁₄	1.92 ^{+0.13} _{-0.07}	54.86	0.00		VP	Y18
251319382.02	3270.622842 ^{+0.002276} _{-0.002256}	14.871387 ^{+0.000916} _{-0.000936}	2.14 ^{+0.12} _{-0.06}	25.94 ^{+2.11} _{-5.93}	0.39 ^{+0.31} _{-0.27}	4.14 ^{+0.11} _{-0.09}	727 ⁺¹⁰ ₋₁₀	2.23 ^{+0.13} _{-0.09}	36.20	0.00		VP	Y18
251319382.03	3265.635282 ^{+0.003388} _{-0.003276}	3.665912 ^{+0.000273} _{-0.000295}	1.32 ^{+0.10} _{-0.06}	15.66 ^{+2.02} _{-4.09}	0.42 ^{+0.33} _{-0.29}	1.63 ^{+0.12} _{-0.11}	1160 ⁺¹⁶ ₋₁₅	1.37 ^{+0.10} _{-0.07}	20.01	0.04		VP	This work
251554286.01	3356.851818 ^{+0.000977} _{-0.000988}	15.466805 ^{+0.000572} _{-0.000565}	5.03 ^{+0.11} _{-0.09}	25.06 ^{+0.61} _{-0.61}	0.77 ^{+0.02} _{-0.02}	3.39 ^{+0.07} _{-0.06}	735 ⁺¹³ ₋₁₄	5.55 ^{+0.22} _{-0.20}	74.92	0.00		VP	This work

On the other hand, N -body simulations are rather necessary to assess the stability of a multi-planet system. Our stability pipeline can employ either direct N -body simulations or the recently published machine learning model `spock` (Tamayo et al. 2020). `spock` uses a combination of N -body simulations and machine learning to classify the stability of multi-planet systems, assigning a stability probability to a specific configuration of a planetary system. Given a set of configurations and their stability probability, it is thus possible to generate a posterior distribution of orbital parameters and planetary masses. Since here we are not interested in obtaining a posterior distribution from stability constraints, we opt to run simpler N -body simulations. We run the simulations with REBOUND’s integrator WHFAST (Rein & Tamayo 2015). For each system, we run 1000 realizations by varying the initial true longitude of the planets. We consider a simulation dynamically unstable if two particles come closer than the sum of their Hill radii. Each system is simulated for 10^6 orbits of the inner planets. All the 6 multi-planet systems were found to be dynamically stable according to the criteria described above.

3.8 Stellar rotation periods

Stellar variability can masquerade as transiting planets. (e.g., Hatzes et al. 2018). Thus, it is important to vet candidates with orbital period that are synchronized or in resonance with the stellar rotation period to eliminate potential false positives. To measure rotation period robustly, several methods are applied (e.g., García et al. 2014b; Santos et al. 2019). The first one consists of doing a time-period analysis based on wavelets (Torrence & Compo 1998) and projecting the result into the period axis to get the Global Wavelet Power Spectrum (see for more details, Mathur et al. 2010). The main peaks are then fitted in an iterative way using Gaussian functions. The second one calculates the auto-correlation function (ACF, McQuillan et al. 2014). The third one is a combination of the first two, called composite spectrum (CS, Ceillier et al. 2017).

We used the K2 EVEREST lightcurves where the transits were masked. We then corrected for instrumental problems and drifts following García et al. (2011). We removed outliers, jumps, and filled gaps using the inpainting technique (García et al. 2014a; Pires et al. 2015). We finally concatenated the different campaigns (when several were available). Moreover, we divided each available campaign by its median and checked for the continuity. Alternatively, we transformed the original flux, F , into ppm by dividing by a triangular filter of 55 d width (F_{55}) for each campaign and subtracting one, i.e., $F/F_{55}-1$. The results per campaign have zero mean. Both methods provide similar results for all the stars studied in this work. The second method removes all instrumental drifts of periods longer than the filter width. To avoid any border effects at the extremes introduced by the filter, the lightcurve is extended by mirroring the beginning and the end by half of the size of the filter (27.5 d).

3.9 Transit timing variations

We searched for evidence of additional non-transiting planets by measuring transit timing variations (TTVs) in all lightcurves in our sample. We took the pre-processed lightcurves (§2.1) containing one or more campaigns for each target and searched for TTVs using the Python Tool for Transit Variations (PyTTV, Korth 2020). In brief, the transits from all the planets in a system are fitted together simultaneously by modeling them with the quadratic Mandel & Agol (2002) transit model implemented in PyTransit (Parviainen

2015), and fitted for all the transit centers t_c for all planets, impact parameter b for all planets, planet-to-star radius ratio R_p/R_s for all planets, quadratic limb darkening coefficients (u, v), and mean stellar density ρ_* . The stellar variability is modeled as a GP with a matern 3/2 kernel using `celerite` (Foreman-Mackey et al. 2017). For the search for variations and periodicities in TTVs, a model–linear, quadratic or sinusoidal–is fitted and subtracted from the transit centers to obtain the TTVs. The generalized Lomb-Scargle periodogram (GLS) from Zechmeister & Kürster (2009) is used to search for periodicities in the TTVs, to calculate the best-fitting parameters and their uncertainties, and to test the significance of the signal. To find out which of the aforementioned models is best-suited, the Bayesian Information Criterion (BIC) is calculated. The model with the lowest BIC is chosen as the best model and the significance of the other models with respect to the best model is calculated via the Δ BIC.

4 RESULTS AND DISCUSSION

4.1 Overview

We now compare the validated planets, planet candidates, and false positives analyzed in this work to the population of known exoplanets. As shown in Figure 8, the majority of validated planets in this work have small radii (median of $2.2 R_\oplus$) with periods between 1.99 and 52.71 d. From Figure 3, it is clear that many of the statistically favored interpretations as planet candidates are consistent with the paucity or lack of nearby bright sources to the targets. Meanwhile, the majority of the 8 stars that are FPs have large radii and V-shaped transits (see Figure 6). Whereas those with small radii have hosts that are plausible binaries with diluted eclipses hinted at by *Gaia*. We also cross-matched our sample using *Gaia* DR2 source identifier with the *TESS-Gaia* v8 (TGv8) catalog (Carrillo et al. 2020) to determine their thin/thick disk membership probabilities. We found 10 matches, which all have >50% membership probability in the thin disk population similar to the majority of known planetary systems and none in the thick disk. In the following, we discuss the unique and interesting systems in detail.

4.2 Long-period planets

The majority of the long period ($P_{\text{orb}} > 30$ d) transiting planet population were discovered during the *Kepler* prime mission. Here we report EPIC 211611158, a K-type star with 2 planets: a sub-Neptune with $R_p = 2.4 R_\oplus$, $P_{\text{orb}} = 52.7$ d, and also a super-Earth with $R_p = 1.2 R_\oplus$ and $P_{\text{orb}} = 10.6$ d, already validated as K2-185 b by Mayo et al. (2018). The outer planet candidate was also detected by Kruse et al. (2019) but left it as a candidate since only 2 transits were detected in C5. Here we clearly detected 3 additional transits in C16 & C18 which finally allowed us to validate the signal to be of planetary origin. Hence we found the second longest orbit with precisely measured period found by K2 only after EPIC 212737443 c with $P_{\text{orb}} = 65.5$ d based on 2 transits observed in C6 (Herath et al. 2019). Despite its relatively long period, its equilibrium temperature, T_{eq} , of 477 K is still slightly higher than that of Mercury.¹⁵ We also detected a third candidate with $P_{\text{orb}} = 14.77$ d present in all campaigns but we did not validate it due to its SNR=7, which is lower than our cutoff at SNR=10. Other known planets found by K2 with precisely measured periods greater than 50 d are K2-118 b

¹⁵ <https://ssd.jpl.nasa.gov/?planets>

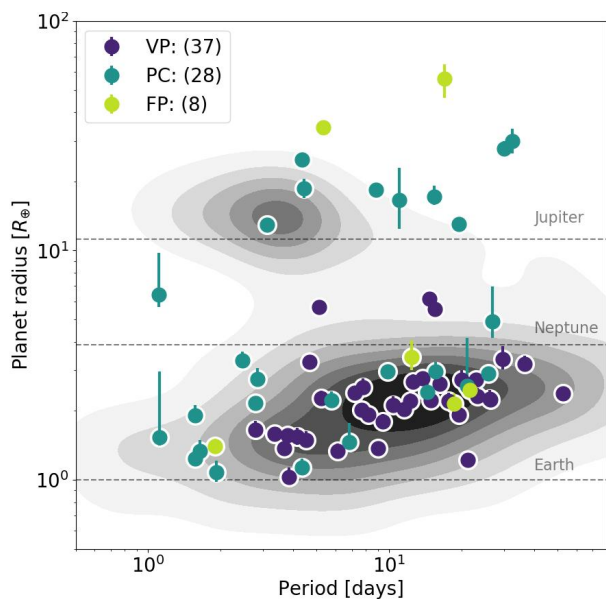


Figure 8. Distribution of validated planets (VP), planet candidates (PC), and false positives (FP) in this work, in the context of known planets (black contour lines). The VPs have a typical size of $2.2 R_{\oplus}$ and orbital periods between 1.99 and 52.71 days. FPs with large radii are the result of eclipsing binary scenarios with little to no dilution from blended stars whereas FPs with small radii are plausible binaries with diluted eclipses hinted by *Gaia*.

(Dressing et al. 2017), K2-93 c (or HIP 41378 c, Vanderburg et al. 2016b; Berardo et al. 2019), and K2-263 b (Mortier et al. 2018) with $P_{\text{orb}} = 50.9, 50.8, 50.8$ d, respectively. EPIC 211611158.02 is most similar to K2-263 b based on its size and period. Similarly, EPIC 21197898 is a solar type star hosting another long period sub-Neptune with $P_{\text{orb}} = 36.6$ d and $T_{\text{eq}} = 598$ K.

4.3 Multi-planet systems

The following briefly describes the architecture of the multi-planetary systems we validate in this work. All such systems are dynamically stable based on the criteria described in §3.7. We also did not measure rotation periods that coincide with the periods of the planets in these systems, further adding evidence to the legitimacy of the signals.

- EPIC 211413752 is a K dwarf hosting 5 detections, of which the shortest period ($P_{\text{orb}} = 2.15$ d) and the deepest transit (depth=13 ppt, $P_{\text{orb}} = 9.33$ d) had been validated as K2-268 b & c by Livingston et al. (2018b). As previously reported by Livingston et al. (2018b), there is a nearby AO companion ($r = 4.7''$, $\Delta K_p = 5.9$) detected with Gemini AO imaging and also with our WIYN speckle imaging and *Gaia* DR2. We confirm that we can indeed rule out the faint nearby star as the source of the signal following the analysis described in §3.3. Moreover, there are 3 additional candidates reported by Kruse et al. (2019) which we also detected using K2/C5 lightcurves (see Figure 9) which we validate here after detecting each candidate in all campaigns i.e. K2/C5, C16, & C18. even though the combined differential photometric precision (CDPP, Christiansen et al. 2012) in C16 & C18 (CDPP \approx 120 ppm) are larger than in C5 (CDPP \approx 90 ppm) for this target, which is comparable to the transit depths (0.2 ppt) of the undetected candidates.

- EPIC 211502222 is a solar-type star with a sub-Neptune and a super-Earth with $R_p = 2.7$ and $1.8 R_{\oplus}$, and $P_{\text{orb}} = 23.0$ and 9.4

d, respectively. The outer planet was detected by Yu et al. (2018) while the inner planet is a new detection in this work. The planets reside on the opposite sides of the radius gap ($1.7\text{--}2.0 R_{\oplus}$; Fulton et al. 2017; Van Eylen et al. 2018b; Hardegree-Ullman et al. 2020), a configuration favorable for testing the photoevaporation theory (Owen & Campos Estrada 2020). EPIC 211502222.02 is therefore a likely remnant core that lost its envelope either due to star-powered or core-powered mass-loss mechanisms (e.g., Owen & Wu 2017; Gupta & Schlichting 2019).

- EPIC 251319382 is a solar-type star with 3 planet candidates with $R_p = 2.2, 1.9, 1.4 R_{\oplus}$ and $P_{\text{orb}} = 14.87, 8.23, 3.67$ d, respectively. The 2 outer planet candidates were detected by Yu et al. (2018) in K2/C16 and the innermost one is a new detection in this work.

- EPIC 212072539 is an M dwarf that hosts a super-Earth and a sub-Neptune with $R_p = 1.7 R_{\oplus}$ and $2.0 R_{\oplus}$, and $P_{\text{orb}} = 2.8$ d and 7.7 d, respectively. These candidates were initially reported by Kruse et al. (2019). Both planets have more than 1 ppt transit depths but their host star is relatively faint ($J=12$).

- EPIC 212297394 is a K dwarf with 2 planets with $R_p = 2.2$ and $1.5 R_{\oplus}$ and $P_{\text{orb}} = 5.2$ and 2.3 d. Both candidates were also detected by Kruse et al. (2019) and the inner planet was validated as K2-304 b by Heller et al. (2019).

- EPIC 212204403 is a K dwarf with 2 planets with $R_p = 3.3$ and $2.7 R_{\oplus}$ and $P_{\text{orb}} = 4.7$ and 12.6 d, respectively. Both candidates were originally detected by Yu et al. (2018) in K2/C16. Both planets have more than 1 ppt transit depths and their host star is moderately bright at $J=11$ and $V=12.5$.

4.4 Sub-saturns around F stars

EPIC 211647930 and EPIC 211730024 are F-stars each hosting a warm sub-Saturn with radii of 6.2 and $5.7 R_{\oplus}$ and periods of 14.8 and 5.1 d, respectively. Apart from their rarity relative to the class of planets discussed in previous subsections, sub-Saturns are interesting because of the diversity in their core and envelope masses (Petigura et al. 2017). Hence despite their similar radii, their expected masses can take a wide range of values from $\sim 6\text{--}60 M_{\oplus}$. Both stars have moderate brightness ($V_{\text{mag}}=11.5$) which makes them amenable for RV follow-up, as long as the planets have massive cores that would induce detectable RV semi-amplitudes. These systems add to the small but growing number of sub-Saturns orbiting giant stars that will help to elucidate our understanding of this rare type of planetary system.

4.5 Planet candidates

We found 28 PCs in our sample that did not meet all the criteria set in §3.6 for planet validation. The majority of the PCs did not pass due to their FPP $>1\%$. A number of PCs have large radii above our $R_p = 8 R_{\oplus}$ cutoff which does not rule out the possibility of low-mass eclipsing binaries. Still, some remain as PCs due to the existence of nearby companions detected using *Gaia* or AO/speckle observations. Follow-up observations such as multi-color photometry can help to validate these as planets (e.g., Parviainen et al. 2020). We also highlight below some interesting PCs due to their potential scientific impact once proven that they are indeed planets.

4.5.1 Candidates with large radii

EPIC 211399359 is a K dwarf hosting a $14.7 R_{\oplus}$ companion on a 3.1 d orbit. Although *vespa* computed an FPP $\ll 1\%$, we do not

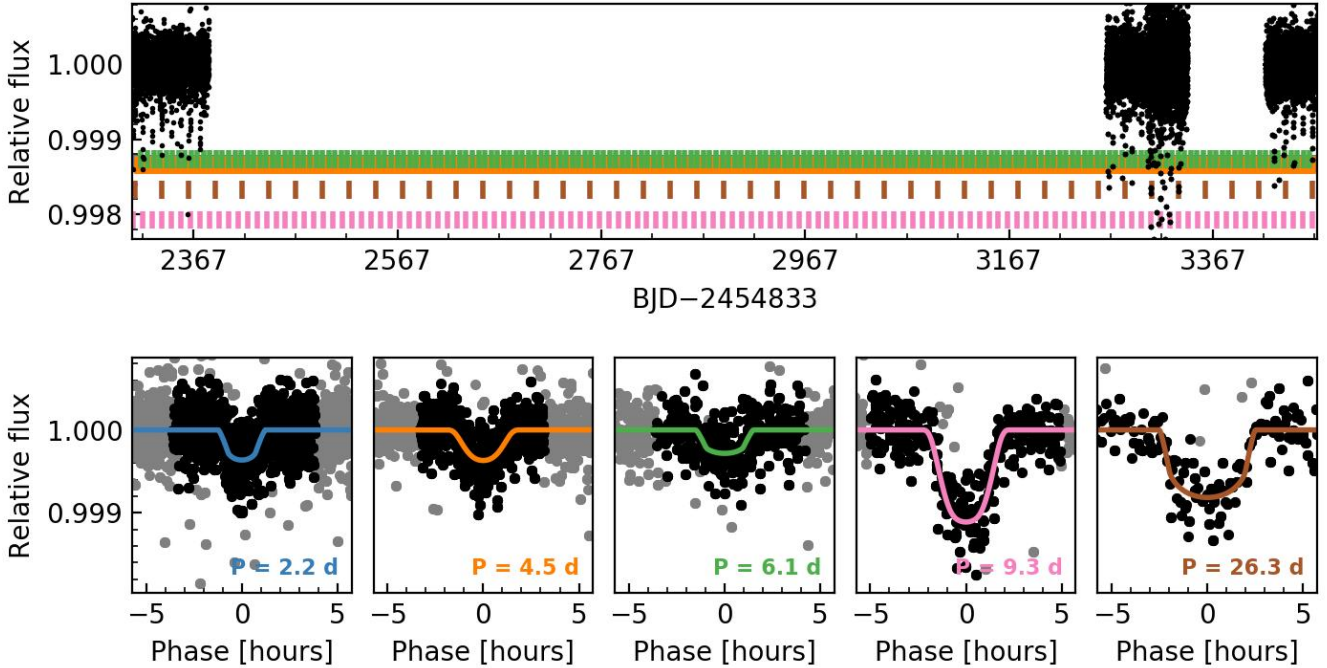


Figure 9. The K2/C5, C16, and C18 lightcurves of the five planet system EPIC 211413752 (K2-268). The top panel shows the flattened lightcurves marking the locations of the individual transits, and the bottom panel shows the phase-folded lightcurves. The planets with shortest period ($P_{\text{orb}} = 2.2$ d) and deepest transit (depth=13 ppt, $P_{\text{orb}} = 9.3$ d) have been previously validated. We detected three additional planet candidates with $P_{\text{orb}} = 4.5$ d, 6.1 d, and 26.3 d which we validated after clearly detecting them in K2/C5, C16 & C18 data (see §4.3 for details).

validate it due to its size similar to eclipsing companions found to be false positives by Shporer et al. (2017). Traditional means to determine if the companion is indeed in the sub-stellar regime is to obtain RV measurements to constrain the companion mass. Due to its faintness ($V=14.6$) however, an alternative method to constrain the mass is to model the phase curve modulations (e.g., Parviainen et al. 2020) and potentially determine the nature of the companion. One possible complication however is that the star exhibits strong variability with $P_{\text{tot}} = 17.23$ d.

All candidates with large radius ($R_p > 8 R_{\oplus}$) in our sample are indicated with "LR" in the notes column in Table 5. Among the host stars with LR candidates, four stars also have a nearby companion detected in their AO/speckle images (indicated with AO in Table 5). For example, we derived $R_p \approx 30 R_{\oplus}$ for EPIC 211995398.01 after correcting for dilution due to a nearby star ($r = 0.4''$, $\Delta K_p = 0.6$)—unbeknown to Kruse et al. (2019) who reported a radius 3 times smaller for the same candidate with $P_{\text{orb}} = 32.5$ d.

4.5.2 Special case

EPIC 212178066 is a bright ($K_p = 6.8$) F star with a sub-Neptune candidate detected and described in detail in Yu et al. (2018). Given its brightness, all the *Gaia* sources within the field of view shown in Figure 3 are ruled out as potential NEBs. Moreover, DSS archival images taken in the 1950s are helpful in ruling out potential BEB scenarios given the star's large proper motion. However, since the star is saturated in K2 data, the transit depth derived from either EVEREST or K2SFF lightcurves may not be very reliable. Despite this we report our derived companion radius of $R_p = 2.9 \pm 0.7 R_{\oplus}$ consistent with the value reported in Yu et al. (2018). Assuming our derived values are correct, we attempted to run *vespa* and report

the values for EPIC 212178066 in Table 5 which should be taken with caution.

4.6 False positives

From vetting, we found 2 targets that exhibit secondary eclipses. We also found EPIC 212099230 to be a false positive due to the apparent difference in transit depth as a function of aperture size (increasing from left to right) as shown in Figure 10. The $P_{\text{orb}} = 7.1$ -day signal reported by Petigura et al. (2018) and Yu et al. (2018) using the K2phot pipeline lightcurves is detected only when the aperture (orange polygon) centered on the target (red cross) is large enough to include the nearby faint star (white cross). This indicates that the nearby faint star with $\Delta K_p = 5.25$ separated by $10''$ is the actual source of the signal. We do not validate this signal due to the missing *JHKs* photometry hindering us to derive the host star parameters using isochrones. We note however that we derived a companion radius $R_p = 8.3 R_{\oplus}$ assuming $R_{\star} = 0.99 R_{\odot}$ (for *Gaia* DR2 source ID 665640392382991232) after taking into account the dilution caused by the brighter star.

We also found 4 targets (EPIC 211335816, EPIC 211336288, EPIC 211541590, & EPIC 212639319) that were previously reported planet candidates based on the analysis of a single K2 campaign but did not detect corresponding signal succeeding campaigns using both EVEREST and K2SFF lightcurves. We did not categorically identify these as false positives since it is possible to recover the signal using more advanced techniques which are outside the scope of this work.

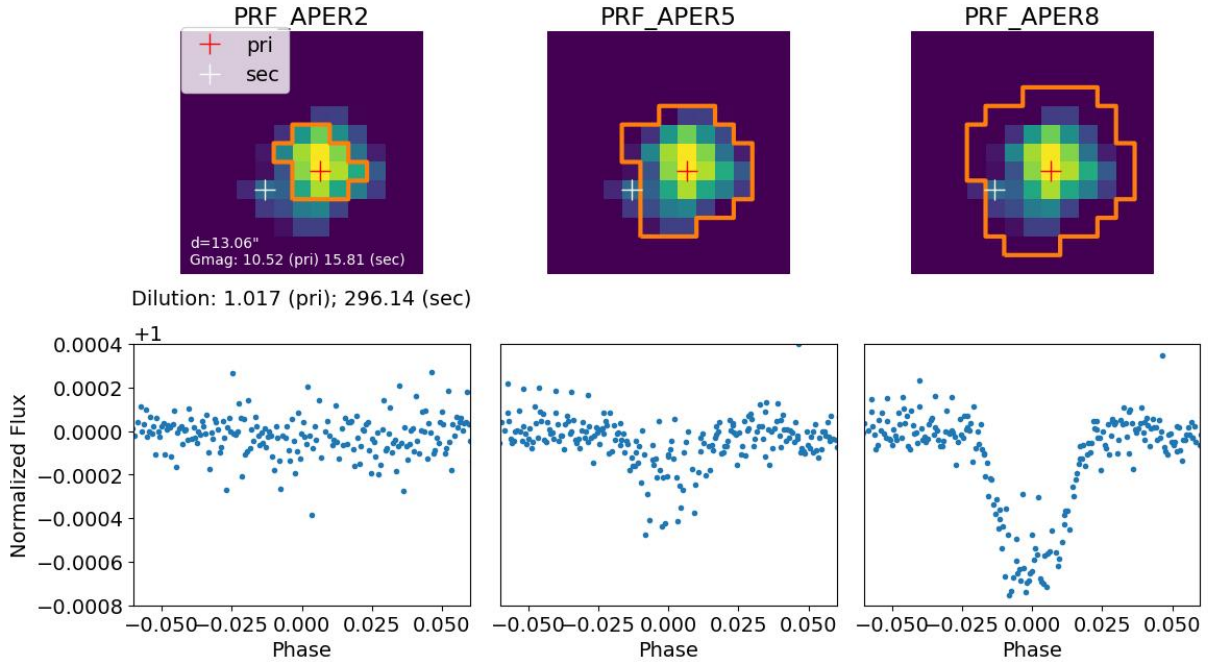


Figure 10. Pixel level multi-aperture analysis of EPIC 212099230 showing the transit depth is dependent on the K2SFF aperture size (orange polygon) and the K2 signal actually originates from the fainter star (white cross) separated $10''$ southeast of the target (red cross).

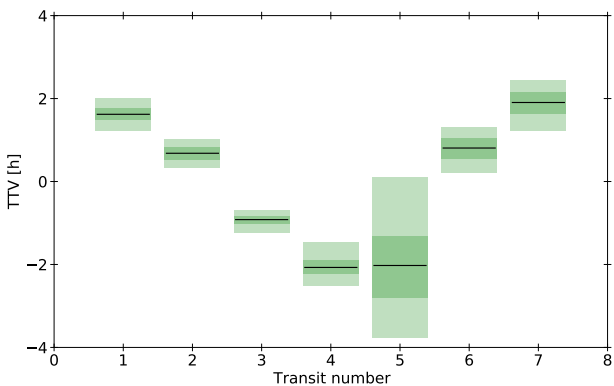


Figure 11. Transit timing variations in EPIC 212058012 where only one transiting planet is hitherto known. The black lines mark the median values and the 68% and 99% central posterior percentiles are indicated by the dark and light shaded area, respectively.

4.7 Transit timing variation

Significant TTVs were detected for EPIC 212058012 where only one transiting planet EPIC 212058012.01 is known. As shown in Figure 11, we measured a peak-to-peak TTV amplitude of less than 120 minutes over the course of 8 orbits, hinting the existence of additional non-transiting planet(s) in the system.

4.8 Stellar rotation periods

Reliable rotation periods are obtained for 42 stars and tentative rotation periods for additional three stars. Their values are listed in Table 6. Of these, nine stars host at least one VP. The rotation periods (and their harmonics) are not synchronized with the orbital

periods of these planets except EPIC 211502222 ($P_{\text{rot}} \sim P_{\text{orb}}$) and EPIC 212440430 ($P_{\text{rot}} \sim 0.5P_{\text{orb}}$).

Figure 12 summarizes the rotation analysis for EPIC 211762841. From various methods, we found a rotation period of 13.15 ± 1.28 d with a clear second harmonic at around 6.5 d seen in the time-period plot but not in ACF. This star is classified as a “double dip” (McQuillan et al. 2014) meaning that two peaks are visible in the ACF. This behaviour is typical of stars where two active regions are located around 180° apart. Indeed, in the top panel two active regions are alternately seen in the first 30 days.

The magnetic activity proxy, S_{ph} computed as the standard deviation on subseries of $5 \times P_{\text{rot}}$ as described in Mathur et al. (2014b,a) is also provided in the table. For the Sun, S_{ph} values typically range between 67.4 and 314.5 ppm (Mathur et al. 2019), corresponding respectively to the minimum and maximum of the magnetic activity cycle. Note that among our sample of stars with measured rotation periods, all except three of them have magnetic activity levels above the Sun at maximum activity.

4.9 Ephemeris improvement

The long baselines of the photometric data from K2 enable us to measure the orbital period very precisely. For the 48 stars observed in multiple campaigns, we measured a factor of 21 ± 19 improvement in the precision of the period as a result of analysing targets in multiple campaigns, as compared to a single campaign (i.e C5 or C6 data set only). This orbital precision improvement is comparable to the values reported by Livingston et al. (2018b) which is about 10-40 \times for a subset of their targets observed in C5 & C16. With the addition of C18 data, the highest orbital precision improvement we achieved is about 80 \times for EPIC 211897691, which was observed in C5, C16 and C18. This factor depends on the baseline of the observation such that even a single transit observed in the more recent

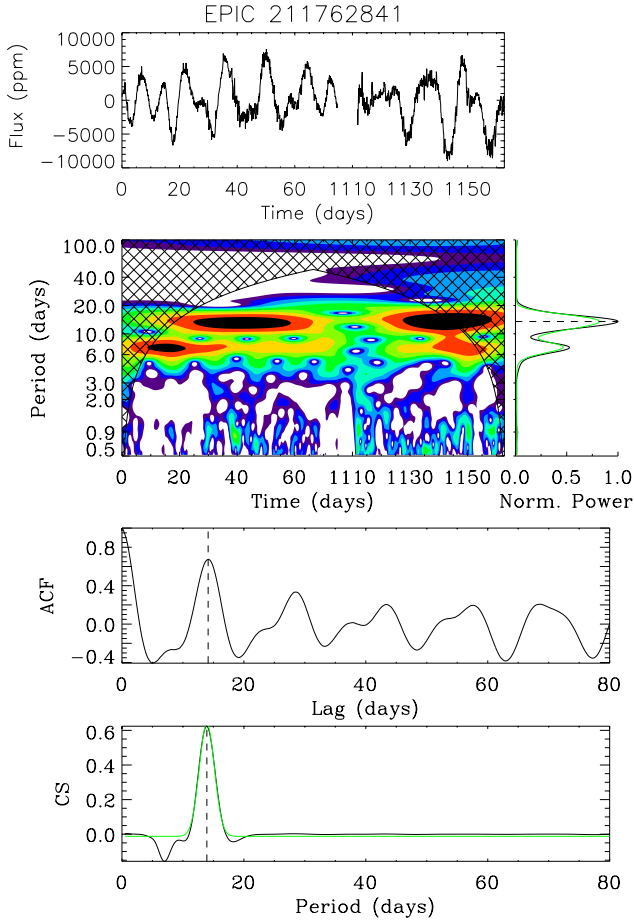


Figure 12. Stellar rotation analysis for EPIC 211762841 observed in C5 and C18 where the 3-year gap in between is removed for visualization purposes in the top panel (the lightcurve) and in the second panel (the time-period analysis). The ACF and the CS are shown in the two lower panels. The hashed region of the wavelet analysis corresponds to the region that cannot be studied with the current length of the time series. The projection of the wavelet power spectrum into the period axis is shown at the right hand side of the second panel. The vertical dashed lines correspond to the retrieved rotation period of 13.15 ± 1.28 d with a clear second harmonic at around 6.5 d. The green line in the CS represents the Gaussian fit to the main rotation peak. The ACF shows a “double dip” structure suggesting two active region are separated close to 180° as explained in the text.

campaign would improve the precision. The precise ephemerides we report therefore significantly reduce the uncertainty in prediction of future times of transit, which is valuable for planning ground-based follow-up observations.

5 SUMMARY

We analysed 68 stars in Cancer and Virgo constellations observed by *K2* during campaigns 5, 16, & 18, and campaigns 6 & 17, respectively, together with a suite of follow up observations including AO/speckle imaging, and reconnaissance spectroscopy. The long baselines of the photometric data from *K2* enabled us to measure the transit ephemeris very precisely, revisit single transit candidates identified in earlier campaigns, and search for additional transiting planets not detectable in previous works. The validated planets have a median radius of $2.2 R_\oplus$ and P_{orb} between 1.99 and 52.71 d, and

Table 6. P_{rot} and S_{ph} for 42 stars in our sample. Noted are those with tentative rotation periods (T) and those stars that host planets validated in this work (VP).

EPIC	P_{rot}	S_{ph}	Note
211314705	10.39 ± 0.81	2135.89 ± 122.63	
211342524	12.19 ± 1.06	1681.88 ± 74.84	
211357309	16.41 ± 1.25	1067.07 ± 47.57	T
211399359	17.23 ± 1.67	3817.92 ± 171.21	
211413752	24.87 ± 2.64	898.20 ± 33.88	VP
211502222	9.98 ± 0.71	208.41 ± 11.87	VP
211578235	14.69 ± 1.13	4648.31 ± 206.41	
211579112	31.71 ± 3.60	4445.99 ± 265.41	
211611158	17.35 ± 2.87	903.46 ± 43.65	VP
211645912	10.83 ± 0.86	6021.45 ± 267.27	
211731298	11.85 ± 0.99	4979.20 ± 239.15	VP
211741619	9.39 ± 0.89	1594.10 ± 91.51	
211762841	13.15 ± 1.28	2954.98 ± 131.30	
211796070	21.66 ± 2.59	540.95 ± 24.24	
211799258	26.48 ± 3.62	7293.34 ± 323.67	
211800191	2.19 ± 0.13	233.98 ± 20.68	
211843564	18.47 ± 1.49	3910.77 ± 173.68	
211886472	19.79 ± 1.44	301.09 ± 12.22	
211897691	11.13 ± 0.83	5909.71 ± 239.18	
211965883	10.61 ± 0.82	3341.08 ± 191.71	
211987231	7.30 ± 0.54	1754.43 ± 100.89	
211988320	24.53 ± 1.64	961.51 ± 55.35	VP
211997641	3.43 ± 0.24	5469.70 ± 387.92	
212041476	27.61 ± 3.25	992.11 ± 55.44	VP
212066407	1.61 ± 0.12	129.69 ± 13.58	
212088059	18.47 ± 1.60	5285.10 ± 188.854	VP
212096658	30.24 ± 3.26	625.50 ± 22.11	
212138198	16.99 ± 2.04	1146.94 ± 51.11	T
212315941	12.70 ± 0.97	1733.76 ± 96.92	
212330265	16.76 ± 1.75	5356.76 ± 656.14	
212428509	5.34 ± 0.36	335.27 ± 18.84	
212440430	8.22 ± 0.47	554.50 ± 25.42	
212543933	25.23 ± 1.82	351.01 ± 19.85	VP
212570977	12.70 ± 1.16	6097.36 ± 250.89	
212586030	16.61 ± 1.46	365.39 ± 15.24	
212628098	4.02 ± 0.28	20639.54 ± 1369.17	
212703473	20.49 ± 1.78	958.19 ± 53.76	
212773272	5.27 ± 0.41	12122.11 ± 675.84	
212797028	25.05 ± 2.77	2010.69 ± 82.87	T
251288417	30.84 ± 3.52	14425.97 ± 802.14	
251319382	17.59 ± 1.14	485.29 ± 27.24	VP

enhance the currently known population of long period ($P_{\text{orb}} > 20$ d) planets from *K2*.

Interesting systems include (a) EPIC 211611158 b: a sub-Neptune with the second longest orbit with precisely measured period observed by *K2*; (b) EPIC 211647930 b and EPIC 211730024 b: both sub-Saturns orbiting an F star which are interesting due to their rarity and diversity of bulk densities; (c) and several multi-planet systems in a variety of architectures, including K2-268 with 5-planets–3 of which were validated in this work. We also report rotation periods between 1.61 and 31.7 d in 42 stars in our sample–9 of which host planets. We also searched for TTVs and detected evidence for additional planet(s) in EPIC 212058012 where only one transiting planet is hitherto detected. These results show that there is still a wealth of interesting planets in *K2* data that can be validated using minimal follow-up data taking advantage of extensive analyses presented in previous catalogs.

ACKNOWLEDGEMENTS

This work was carried out as part of the KESPRINT consortium. The WIYN/NESSI observations were conducted as part of an approved NOAO observing program (P.I. Livingston, proposal ID 2017A-0377). Data presented herein were obtained at the WIYN Observatory from telescope time allocated to NN-EXPLORE through the scientific partnership of the National Aeronautics and Space Administration, the National Science Foundation, and the National Optical Astronomy Observatory. NESSI was funded by the NASA Exoplanet Exploration Program and the NASA Ames Research Center. NESSI was built at the Ames Research Center by Steve B. Howell, Nic Scott, Elliott P. Horch, and Emmett Quigley. The authors are honored to be permitted to conduct observations on Iolkam Du'ag (Kitt Peak), a mountain within the Tohono O'odham Nation with particular significance to the Tohono O'odham people. This work is supported by JSPS KAKENHI grant numbers 18H05442, 15H02063, 17H04574, 18H01265, 18H05439, and 20K14518, and JST PRESTO grant number JPMJPR1775. This work is also supported by a NASA WIYN PI Data Award, administered by the NASA Exoplanet Science Institute. MF gratefully acknowledges the support of the Swedish National Space Agency (DNR 65/19, 174/18). S.M. acknowledges 674 support by the Spanish Ministry with the Ramon y Cajal fellowship number RYC-2015-17697. R.A.G. acknowledges the support of the CNES PLATO grant. JK gratefully acknowledge the support of the Swedish National Space Agency (SNSA; DNR 2020-00104). This research has made use of the Exoplanet Followup Observation Program website, which is operated by the California Institute of Technology, under contract with the National Aeronautics and Space Administration under the Exoplanet Exploration Program. This research has made use of the NASA Exoplanet Archive, which is operated by the California Institute of Technology, under contract with the National Aeronautics and Space Administration under the Exoplanet Exploration Program. This work has made use of data from the European Space Agency (ESA) mission Gaia (<https://www.cosmos.esa.int/gaia>), processed by the Gaia Data Processing and Analysis Consortium (DPAC, <https://www.cosmos.esa.int/web/gaia/dpac/consortium>). Funding for the DPAC has been provided by national institutions, in particular the institutions participating in the Gaia Multilateral Agreement. The Digitized Sky Surveys were produced at the Space Telescope Science Institute under U.S. Government grant NAG W-2166. The images of these surveys are based on photographic data obtained using the Oschin Schmidt Telescope on Palomar Mountain and the UK Schmidt Telescope. The plates were processed into the present compressed digital form with the permission of these institutions. KWFL acknowledges the support by DFG grants RA714/14-1 within the DFG Schwerpunkt SPP 1992, Exploring the Diversity of Extrasolar Planets. The simulations were run on the CfCA Calculation Server at NAOJ. A.A.T. acknowledges support from JSPS KAKENHI Grant Numbers 17F17764 and 17H06360.

DATA AVAILABILITY

The data underlying this article were accessed from MAST (<https://archive.stsci.edu/hlsp/>) with specific links mentioned in the article. The tables presented in this work will also be made available at the CDS (<http://cdsarc.u-strasbg.fr/>).

REFERENCES

- Adams E. R., Jackson B., Endl M., 2016, *AJ*, **152**, 47
- Barragán O., et al., 2018, *A&A*, **612**, A95
- Berardo D., et al., 2019, *AJ*, **157**, 185
- Borucki W. J., Koch D., Kepler Science Team 2010, in AAS/Division for Planetary Sciences Meeting Abstracts #42. p. 47.03
- Cabrera J., Csizmadia S., Erikson A., Rauer H., Kirste S., 2012, *A&A*, **548**, A44
- Cabrera J., et al., 2017, *A&A*, **606**, A75
- Carmichael T. W., et al., 2020, arXiv e-prints, p. [arXiv:2009.13515](https://arxiv.org/abs/2009.13515)
- Carrillo A., Hawkins K., Bowler B. P., Cochran W., Vanderburg A., 2020, *MNRAS*, **491**, 4365
- Castro González A., et al., 2020, *MNRAS*,
- Ceillier T., et al., 2017, *A&A*, **605**, A111
- Choi J., Dotter A., Conroy C., Cantiello M., Paxton B., Johnson B. D., 2016, *ApJ*, **823**, 102
- Christiansen J. L., et al., 2012, *PASP*, **124**, 1279
- Claret A., Hauschildt P. H., Witte S., 2012, VizieR Online Data Catalog, [pp J/A+A/546/A14](https://vizier.cesr.fr/vizieR/J/A+A/546/A14)
- Crossfield I. J. M., et al., 2016, *ApJS*, **226**, 7
- Crossfield I. J. M., et al., 2018, *ApJS*, **239**, 5
- Cui X.-Q., et al., 2012, *Research in Astronomy and Astrophysics*, **12**, 1197
- Dai F., et al., 2017, *AJ*, **154**, 226
- Dattilo A., et al., 2019, *AJ*, **157**, 169
- Díaz R. F., Almenara J. M., Santerne A., Moutou C., Lethuillier A., Deleuil M., 2014, *MNRAS*, **441**, 983
- Dotson J. L., Barentsen G., Hedges C., Coughlin J. L., 2019, *Research Notes of the American Astronomical Society*, **3**, 23
- Dotter A., 2016, *ApJS*, **222**, 8
- Dressing C. D., et al., 2017, *AJ*, **154**, 207
- Dressing C. D., et al., 2019, *AJ*, **158**, 87
- Endl M., Cochran W. D., 2016, *PASP*, **128**, 094502
- Evans D. F., 2018, *Research Notes of the American Astronomical Society*, **2**, 20
- Foreman-Mackey D., Hogg D. W., Lang D., Goodman J., 2013, *PASP*, **125**, 306
- Foreman-Mackey D., Agol E., Ambikasaran S., Angus R., 2017, *The Astrophysical Journal*, **154**, 220
- Fridlund M., et al., 2017, *A&A*, **604**, A16
- Fulton B. J., et al., 2017, *AJ*, **154**, 109
- Gaia Collaboration et al., 2019, *A&A*, **623**, A110
- García R. A., et al., 2011, *MNRAS*, **414**, L6
- García R. A., et al., 2014a, *A&A*, **568**, A10
- García R. A., et al., 2014b, *A&A*, **572**, A34
- Gavel D., et al., 2014, in Marchetti E., Close L. M., Vran J.-P., eds, Society of Photo-Optical Instrumentation Engineers (SPIE) Conference Series Vol. 9148, Adaptive Optics Systems IV. p. 914805 ([arXiv:1407.8207](https://arxiv.org/abs/1407.8207)), [doi:10.1117/12.2055256](https://doi.org/10.1117/12.2055256)
- Giacalone S., et al., 2020, arXiv e-prints, p. [arXiv:2002.00691](https://arxiv.org/abs/2002.00691)
- Giacalone S., et al., 2021, *AJ*, **161**, 24
- Gladman B., 1993, *Icarus*, **106**, 247
- Gupta A., Schlichting H. E., 2019, *MNRAS*, **487**, 24
- Hardegree-Ullman K. K., Zink J. K., Christiansen J. L., Dressing C. D., Ciardi D. R., Schlieder J. E., 2020, *ApJS*, **247**, 28
- Hatzes A. P., et al., 2018, *AJ*, **155**, 120
- Hayano Y., et al., 2008, in Hubin N., Max C. E., Wizinowich P. L., eds, Society of Photo-Optical Instrumentation Engineers (SPIE) Conference Series Vol. 7015, Adaptive Optics Systems. p. 701510, [doi:10.1117/12.789992](https://doi.org/10.1117/12.789992)
- Heller R., Hippke M., Rodenbeck K., 2019, *A&A*, **627**, A66
- Herath M., et al., 2019, *MNRAS*, **488**, 536
- Hippke M., Heller R., 2019, *A&A*, **623**, A39
- Hirano T., et al., 2016, *ApJ*, **825**, 53
- Hirano T., et al., 2018, *AJ*, **155**, 127
- Howell S. B., Everett M. E., Sherry W., Horch E., Ciardi D. R., 2011, *AJ*, **142**, 19
- Howell S. B., et al., 2014, *PASP*, **126**, 398

- Huber D., et al., 2017, *ApJ*, **844**, 102
- Kanodia S., Wolfgang A., Stefansson G. K., Ning B., Mahadevan S., 2019, *ApJ*, **882**, 38
- Kipping D. M., 2013, *MNRAS*, **435**, 2152
- Kipping D. M., 2014, *MNRAS*, **440**, 2164
- Kobayashi N., et al., 2000, in Iye M., Moorwood A. F., eds, Society of Photo-Optical Instrumentation Engineers (SPIE) Conference Series Vol. 4008, Optical and IR Telescope Instrumentation and Detectors. pp 1056–1066, doi:10.1117/12.395423
- Korth J., 2020, PhD thesis, University of Cologne, <http://www.uni-koeln.de/>
- Korth J., et al., 2019, *MNRAS*, **482**, 1807
- Kostov V. B., et al., 2019, *AJ*, **157**, 124
- Kreidberg L., 2015, *PASP*, **127**, 1161
- Kruse E., Agol E., Luger R., Foreman-Mackey D., 2019, *ApJS*, **244**, 11
- Kupke R., et al., 2012, in Ellerbroek B. L., Marchetti E., Véran J.-P., eds, Society of Photo-Optical Instrumentation Engineers (SPIE) Conference Series Vol. 8447, Adaptive Optics Systems III. p. 84473G, doi:10.1117/12.926470
- Lillo-Box J., et al., 2020, *A&A*, **640**, A48
- Lissauer J. J., et al., 2011, *ApJS*, **197**, 8
- Livingston J. H., et al., 2018a, *AJ*, **156**, 78
- Livingston J. H., et al., 2018b, *AJ*, **156**, 277
- Luger R., Agol E., Kruse E., Barnes R., Becker A., Foreman-Mackey D., Deming D., 2016, *AJ*, **152**, 100
- Luger R., Kruse E., Foreman-Mackey D., Agol E., Saunders N., 2018, *AJ*, **156**, 99
- Luri X., et al., 2018, *A&A*, **616**, A9
- Mandel K., Agol E., 2002, *ApJ*, **580**, L171
- Mathur S., et al., 2010, *A&A*, **511**, A46
- Mathur S., Salabert D., García R. A., Ceillier T., 2014a, *Journal of Space Weather and Space Climate*, **4**, A15
- Mathur S., et al., 2014b, *A&A*, **562**, A124
- Mathur S., García R. A., Bugnet L., Santos Á. R. G., Santiago N., Beck P. G., 2019, *Frontiers in Astronomy and Space Sciences*, **6**, 46
- Mayo A. W., et al., 2018, *AJ*, **155**, 136
- McGurk R., et al., 2014, in Marchetti E., Close L. M., Vran J.-P., eds, Society of Photo-Optical Instrumentation Engineers (SPIE) Conference Series Vol. 9148, Adaptive Optics Systems IV. p. 91483A (arXiv:1407.8205), doi:10.1117/12.2057027
- McQuillan A., Mazeh T., Aigrain S., 2014, *ApJS*, **211**, 24
- Montet B. T., et al., 2015, *ApJ*, **809**, 25
- Mortier A., et al., 2018, *MNRAS*, **481**, 1839
- Morton T. D., 2012, *ApJ*, **761**, 6
- Morton T. D., 2015a, isochrones: Stellar model grid package (ascl:1503.010)
- Morton T. D., 2015b, VESPA: False positive probabilities calculator (ascl:1503.011)
- Morton T. D., Bryson S. T., Coughlin J. L., Rowe J. F., Ravichandran G., Petigura E. A., Haas M. R., Batalha N. M., 2016, *ApJ*, **822**, 86
- Nardiello D., Libralato M., Bedin L. R., Piotto G., Borsato L., Granata V., Malavolta L., Nascimbeni V., 2016, *MNRAS*, **463**, 1831
- Newville M., Stensitzki T., Allen D. B., Rawlik M., Ingargiola A., Nelson A., 2016, Lmfit: Non-Linear Least-Square Minimization and Curve-Fitting for Python (ascl:1606.014)
- Ning B., Wolfgang A., Ghosh S., 2018, *ApJ*, **869**, 5
- Owen J. E., Campos Estrada B., 2020, *MNRAS*, **491**, 5287
- Owen J. E., Wu Y., 2017, *ApJ*, **847**, 29
- Parviainen H., 2015, *MNRAS*, **450**, 3233
- Parviainen H., et al., 2020, *A&A*, **633**, A28
- Paxton B., et al., 2015, *ApJS*, **220**, 15
- Petigura E. A., et al., 2017, *AJ*, **153**, 142
- Petigura E. A., et al., 2018, *AJ*, **155**, 21
- Pires S., Mathur S., García R. A., Ballot J., Stello D., Sato K., 2015, *A&A*, **574**, A18
- Pope B. J. S., Parviainen H., Aigrain S., 2016, *MNRAS*, **461**, 3399
- Rein H., Tamayo D., 2015, *MNRAS*, **452**, 376
- Ricker G. R., et al., 2014, in Oschmann Jacobus M. J., Clampin M., Fazio G. G., MacEwen H. A., eds, Society of Photo-Optical Instrumentation Engineers (SPIE) Conference Series Vol. 9143, Space Telescopes and Instrumentation 2014: Optical, Infrared, and Millimeter Wave. p. 914320 (arXiv:1406.0151), doi:10.1117/12.2063489
- Santerne A., et al., 2015, *MNRAS*, **451**, 2337
- Santos A. R. G., García R. A., Mathur S., Bugnet L., van Saders J. L., Metcalfe T. S., Simonian G. V. A., Pinsonneault M. H., 2019, *ApJS*, **244**, 21
- Savel A. B., Dressing C. D., Hirsch L. A., Ciardi D. R., Fleming J. P. C., Giacalone S. A., Mayo A. W., Christiansen J. L., 2020, *AJ*, **160**, 287
- Scott N. J., Howell S. B., Horch E. P., Everett M. E., 2018, *PASP*, **130**, 054502
- Seager S., Mallén-Ornelas G., 2003, *ApJ*, **585**, 1038
- Shporer A., et al., 2017, *ApJ*, **847**, L18
- Sinukoff E., et al., 2016, *ApJ*, **827**, 78
- Skrutskie M. F., et al., 2006, *AJ*, **131**, 1163
- Sorahana S., Yamamura I., Murakami H., 2013, *ApJ*, **767**, 77
- Southworth J., Evans D. F., 2016, *MNRAS*, **463**, 37
- Stassun K. G., Torres G., 2018, *ApJ*, **862**, 61
- Tamayo D., et al., 2020, *Proceedings of the National Academy of Science*, **117**, 18194
- Tody D., 1986, in Crawford D. L., ed., Society of Photo-Optical Instrumentation Engineers (SPIE) Conference Series Vol. 627, Instrumentation in astronomy VI. p. 733, doi:10.1117/12.968154
- Torrence C., Compo G. P., 1998, *Bulletin of the American Meteorological Society*, **79**, 61
- Torres G., Fressin F., Lissauer J. J., Marcy G. W., Gilliland R. L., Henze C. E., Kepler Science Team 2011, in American Astronomical Society Meeting Abstracts #218. p. 112.06
- Tull R. G., MacQueen P. J., Sneden C., Lambert D. L., 1995, *PASP*, **107**, 251
- Van Eylen V., et al., 2018a, *MNRAS*, **478**, 4866
- Van Eylen V., Agentoft C., Lundkvist M. S., Kjeldsen H., Owen J. E., Fulton B. J., Petigura E., Snellen I., 2018b, *MNRAS*, **479**, 4786
- Vanderburg A., Johnson J. A., 2014, *PASP*, **126**, 948
- Vanderburg A., et al., 2016a, *ApJS*, **222**, 14
- Vanderburg A., et al., 2016b, *ApJ*, **827**, L10
- Wittenmyer R. A., et al., 2020, *MNRAS*, **496**, 851
- Yu L., et al., 2018, *AJ*, **156**, 22
- Zechmeister M., Kürster M., 2009, *A&A*, **496**, 577
- Zink J. K., et al., 2019, *Research Notes of the American Astronomical Society*, **3**, 43
- Zink J. K., Hardegree-Ullman K. K., Christiansen J. L., Dressing C. D., Crossfield I. J. M., Petigura E. A., Schlieder J. E., Ciardi D. R., 2020, *AJ*, **159**, 154
- ¹Department of Astronomy, University of Tokyo, 7-3-1 Hongo, Bunkyo-ku, Tokyo 113-0033, Japan
- ²Department of Earth Science and Astronomy, College of Arts and Sciences, The University of Tokyo, 3-8-1 Komaba, Meguro-ku, Tokyo 153-8902, Japan
- ³Komaba Institute for Science, The University of Tokyo, 3-8-1 Komaba, Meguro, Tokyo 153-8902, Japan
- ⁴Department of Earth and Planetary Sciences, Tokyo Institute of Technology, 2-12-1 Ookayama, Meguro-ku, Tokyo 152-8551, Japan
- ⁵Dipartimento di Fisica, Università di Torino, Via P. Giuria 1, I-10125, Torino, Italy
- ⁶Instituto de Astrofísica de Canarias (IAC), 38205 La Laguna, Tenerife, Spain
- ⁷Departamento de Astrofísica, Universidad de La Laguna, 38206 La Laguna, Tenerife, Spain
- ⁸Center for Planetary Systems Habitability, The University of Texas at Austin, Austin TX USA
- ⁹Department of Astronomy and McDonald Observatory, University of Texas at Austin, 2515 Speedway, Stop C1400, Austin, TX 78712, USA
- ¹⁰Center for Astronomy and Astrophysics, Technical University

Berlin, Hardenbergstr. 36, 10623 Berlin, Germany

¹¹Division of Geological and Planetary Sciences, California Institute of Technology, 1200 East California Blvd, Pasadena CA 91125

¹²Department of Astrophysical Sciences, Princeton University, 4 Ivy Lane, Princeton, NJ 08544, USA

¹³Department of Space, Earth and Environment, Astronomy and Plasma Physics, Chalmers University of Technology, 412 96 Gothenburg, Sweden

¹⁴AIM, CEA, CNRS, Université Paris-Saclay, Université Paris Diderot, Sorbonne Paris Cité, F-91191 Gif-sur-Yvette, France

¹⁵Leiden Observatory, Leiden University, 2333CA Leiden, The Netherlands

¹⁶Department of Space, Earth and Environment, Chalmers University of Technology, Onsala Space Observatory, SE-439 92

Onsala, Sweden

¹⁷Astrobiology Center, 2-21-1 Osawa, Mitaka, Tokyo 181-8588, Japan

¹⁸National Astronomical Observatory of Japan, 2-21-1 Osawa, Mitaka, Tokyo 181-8588, Japan

¹⁹Department of Space and Climate Physics, Mullard Space Science Laboratory, Holmbury St. Mary, Dorking, Surrey RH5 6NT,

United Kingdom

²⁰JST, PRESTO, 3-8-1 Komaba, Meguro, Tokyo 153-8902, Japan

²²Instituto Universitario de Ciencias y Tecnologías Espaciales de Asturias (ICTEA), C.Independencia 13, E-33004 Oviedo, Spain

²³Astronomical Institute, Czech Academy of Sciences, Fricova 298, 25165, Ondrejov, Czech Republic

²⁴Department of Astronomy, University of California Berkeley, Berkeley, CA 94720, USA

²⁵Department of Astronomy, University of Maryland, College Park, College Park, MD 20742 USA

APPENDIX A: vespa LIKELIHOODS

This paper has been typeset from a $\text{\TeX}/\text{\LaTeX}$ file prepared by the author.

Table A1. vespa likelihoods.

ID	L_{beb}^a	$L_{\text{bebPx}2^a}$	L_{eb}^b	$L_{\text{ebPx}2^b}$	L_{heb}^c	$L_{\text{hebPx}2^c}$	L_{pl}^d	FPP
211314705.01	0.00e+00	0.00e+00	2.80e-05	1.31e-06	2.45e-06	3.75e-07	7.26e-03	4.41e-03
211357309.01	6.77e-04	3.47e-04	0.00e+00	0.00e+00	0.00e+00	0.00e+00	2.10e-02	4.65e-02
211383821.01	3.74e-04	1.13e-03	4.41e-04	1.89e-04	7.57e-18	3.85e-05	6.89e-02	3.06e-02
211399359.01	0.00e+00	0.00e+00	2.58e-17	8.80e-15	1.05e-96	6.95e-47	4.45e-02	1.99e-13
211401787.01	4.08e-07	2.78e-131	1.40e-06	2.31e-17	2.15e-07	9.35e-11	9.88e-03	2.04e-04
211413752.03	7.72e-08	4.13e-15	1.51e-05	2.92e-07	2.26e-13	5.41e-19	5.12e-03	3.01e-03
211413752.04	3.60e-05	2.84e-06	8.14e-04	5.88e-05	7.47e-06	3.39e-06	1.87e-02	4.69e-02
211413752.05	9.13e-07	6.85e-14	8.74e-08	1.46e-08	4.86e-07	1.43e-09	3.44e-03	4.37e-04
211439059.01	1.55e-06	1.74e-19	3.50e-06	1.67e-07	2.87e-07	1.82e-08	1.49e-03	3.69e-03
211490999.01	2.10e-05	4.38e-13	3.53e-04	1.74e-08	3.10e-06	1.30e-21	2.91e-02	1.28e-02
211502222.01	3.04e-136	0.00e+00	3.43e-17	1.92e-18	0.00e+00	1.30e-146	1.38e-06	2.62e-11
211502222.02	2.57e-06	6.71e-09	1.46e-05	1.66e-07	6.17e-07	2.63e-09	5.83e-03	3.07e-03
211578235.01	2.46e-03	2.38e-04	7.38e-03	2.44e-04	7.65e-04	1.62e-05	4.45e-03	7.14e-01
211579112.01	3.54e-11	6.45e-12	5.52e-06	1.58e-07	2.97e-07	7.04e-08	2.23e-03	2.70e-03
211611158.02	1.15e-05	1.11e-29	6.40e-05	1.11e-09	5.99e-20	8.72e-17	4.43e-03	1.68e-02
211647930.01	1.01e-09	2.28e-88	5.96e-24	8.14e-48	3.08e-08	4.80e-11	4.27e-03	7.46e-06
211694226.01	6.88e-04	2.08e-03	2.16e-04	7.91e-05	1.62e-05	2.09e-05	3.18e-02	8.88e-02
211730024.01	3.12e-22	1.11e-100	8.89e-08	9.20e-10	3.10e-15	2.82e-11	1.15e-02	7.83e-06
211743874.01	5.09e-07	1.15e-30	5.97e-06	8.43e-08	7.55e-08	7.38e-10	4.01e-03	1.65e-03
211762841.01	1.63e-03	6.82e-03	1.69e-03	3.98e-04	1.39e-05	6.48e-05	7.18e-02	1.29e-01
211763214.01	0.00e+00	0.00e+00	1.90e-21	1.40e-15	1.41e-17	1.79e-36	9.87e-04	1.43e-12
211770696.01	8.75e-08	5.38e-80	1.27e-131	1.29e-53	8.17e-12	8.61e-25	1.14e-03	7.65e-05
211779390.01	2.91e-05	4.57e-06	2.54e-05	3.43e-07	5.66e-07	1.72e-06	1.63e-02	3.77e-03
211796070.01	4.00e-12	1.16e-12	1.90e-12	2.30e-12	6.88e-13	2.19e-12	8.81e-49	1.00e+00
211797637.01	7.91e-04	5.53e-03	8.93e-04	3.46e-04	4.11e-08	1.09e-06	1.45e-02	3.43e-01
211799258.01	0.00e+00	0.00e+00	5.25e-03	3.84e-03	9.89e-04	3.18e-04	4.17e-03	7.14e-01
211800191.01	1.44e-05	0.00e+00	1.21e-03	3.33e-04	1.92e-05	2.77e-06	1.96e-02	7.47e-02
211817229.01	1.19e-03	3.81e-03	2.41e-06	7.41e-06	3.73e-06	2.85e-05	4.89e-02	9.36e-02
211897691.01	1.14e-05	4.12e-05	1.08e-05	2.96e-05	7.92e-07	3.94e-07	1.18e-03	7.41e-02
211897691.02	3.33e-05	6.57e-05	3.36e-05	2.51e-05	1.77e-06	1.33e-06	1.42e-03	1.02e-01
211923431.01	6.27e-09	7.11e-10	3.97e-07	2.96e-15	2.31e-07	1.69e-09	2.17e-03	2.94e-04
211939692.04	3.42e-08	4.74e-20	1.28e-04	2.17e-06	4.52e-07	5.82e-08	2.12e-05	8.60e-01
211965883.01	4.69e-05	8.29e-13	4.74e-04	1.19e-04	4.31e-05	4.71e-06	2.75e-03	2.00e-01
211978988.01	2.18e-06	3.24e-123	1.79e-05	5.19e-07	1.34e-12	3.46e-27	1.74e-02	1.18e-03
211987231.01	8.84e-86	3.45e-303	9.06e-03	2.37e-04	2.93e-04	2.53e-06	1.01e-04	9.90e-01
211995398.01	1.42e-07	3.03e-09	3.20e-09	5.94e-13	6.17e-59	3.14e-42	2.75e-03	5.40e-05
211997641.01	0.00e+00	0.00e+00	0.00e+00	2.29e-02	3.61e-04	5.31e-04	1.14e-04	9.95e-01
212006318.01	8.30e-06	6.26e-13	8.15e-05	1.11e-06	4.57e-06	4.11e-09	4.56e-03	2.05e-02
212009150.01	1.14e-05	4.58e-06	2.68e-06	4.60e-14	6.37e-08	5.92e-08	1.72e-04	9.81e-02
212040382.01	3.30e-99	0.00e+00	3.15e-04	2.79e-22	3.86e-18	1.92e-13	1.82e-02	1.70e-02
212041476.01	2.07e-05	1.45e-06	7.51e-06	1.49e-07	1.17e-05	4.09e-07	7.89e-02	5.31e-04
212058012.01	2.24e-06	5.49e-32	2.09e-04	1.84e-09	9.24e-09	8.13e-13	3.86e-02	5.43e-03
212072539.01	1.84e-07	2.30e-43	1.05e-195	7.94e-112	1.18e-55	6.15e-41	2.07e-03	8.88e-05
212072539.02	2.58e-04	1.01e-03	1.91e-04	1.08e-04	4.41e-05	2.16e-05	3.67e-02	4.27e-02
212081533.01	0.00e+00	1.62e-54	1.63e-17	6.43e-21	5.45e-06	5.58e-14	3.44e-02	1.59e-04
212088059.01	2.21e-05	1.36e-34	7.45e-08	5.42e-08	4.04e-08	2.35e-08	2.47e-02	9.00e-04
212132195.01	0.00e+00	0.00e+00	1.13e-06	1.88e-07	2.50e-18	3.77e-15	1.38e-02	9.57e-05
212161956.01	8.03e-06	4.74e-08	1.97e-05	1.08e-06	5.50e-06	7.07e-08	1.55e-02	2.22e-03
212178066.01	1.00e-07	1.32e-23	5.81e-06	7.82e-08	4.83e-08	2.22e-12	1.55e-03	3.88e-03
212204403.01	1.76e-04	1.35e-36	1.25e-06	1.74e-11	1.16e-27	2.24e-27	7.94e-02	2.23e-03
212204403.02	3.72e-06	4.18e-23	2.90e-06	6.37e-08	1.64e-14	1.01e-16	6.10e-03	1.09e-03
212278644.01	1.43e-03	6.70e-04	2.79e-04	6.85e-06	5.12e-05	2.12e-07	0.00e+00	1.00e+00
212297394.01	3.85e-05	2.54e-39	4.22e-06	1.50e-06	8.13e-07	1.23e-09	1.54e-02	2.92e-03
212420823.01	1.75e-06	3.52e-37	3.18e-06	7.20e-10	8.77e-08	4.70e-09	3.19e-03	1.57e-03
212428509.01	5.81e-05	0.00e+00	1.71e-02	1.19e-03	9.56e-04	2.22e-06	1.27e-04	9.93e-01
212435047.01	9.99e-04	8.63e-218	1.40e-03	2.12e-04	0.00e+00	3.40e-23	1.70e-02	1.33e-01
212440430.01	2.02e-05	4.82e-08	2.45e-05	6.33e-08	1.35e-08	1.38e-12	1.42e-02	3.14e-03
212440430.02	2.90e-05	1.30e-15	4.73e-06	3.79e-08	1.36e-06	1.02e-08	7.97e-03	4.39e-03
212495601.01	1.37e-06	5.23e-42	3.01e-06	8.27e-09	2.94e-15	6.04e-13	0.00e+00	1.00e+00
212543933.01	1.29e-05	3.37e-10	1.12e-05	7.01e-07	1.11e-07	1.19e-09	1.73e-02	1.43e-03
212570977.01	2.74e-56	0.00e+00	1.98e-03	7.06e-12	5.32e-05	1.08e-11	8.40e-03	1.95e-01
212587672.01	5.03e-06	3.45e-46	6.50e-05	9.03e-07	4.69e-08	3.14e-11	9.20e-03	7.66e-03
212628098.01	3.11e-52	0.00e+00	1.21e-03	3.03e-03	3.26e-04	2.90e-04	3.08e-03	6.12e-01
212628477.01	9.23e-06	3.94e-85	5.83e-04	7.63e-04	1.17e-04	1.68e-05	1.32e-03	5.31e-01
212634172.01	6.54e-05	3.36e-03	2.67e-03	9.14e-04	3.52e-04	3.04e-04	3.25e-02	1.91e-01
212661144.01	2.30e-04	2.03e-127	3.32e-04	1.35e-05	7.72e-05	8.01e-06	6.53e-02	1.00e-02
212690867.01	1.39e-03	7.96e-04	3.02e-04	4.80e-05	4.50e-05	6.43e-06	1.79e-03	5.92e-01
212797028.01	2.97e-05	5.45e-283	5.44e-05	1.97e-05	1.19e-04	1.83e-06	1.81e-04	5.53e-01
251319382.01	6.66e-07	1.22e-11	4.27e-06	7.25e-12	3.74e-08	3.30e-14	2.47e-02	2.01e-04
251319382.02	7.62e-07	5.55e-157	3.53e-05	4.27e-10	1.30e-08	3.48e-30	2.72e-02	1.32e-03
251319382.03	1.69e-05	9.16e-06	2.07e-04	4.27e-05	7.05e-07	1.18e-06	6.40e-03	4.15e-02
251554286.01	2.94e-06	2.03e-276	3.74e-05	4.43e-08	3.86e-11	5.34e-21	1.27e-02	3.16e-03

(a) Likelihood that the signal is due to a BEB at the measured period or twice that.

(b) Likelihood that the signal is due to an eclipsing binary at the measured period or twice that.

(c) Likelihood that the signal is due to a hierarchical star system with an eclipsing component at the measured period or twice that.

(d) Likelihood that the signal is due to a planet.