



Universiteit
Leiden
The Netherlands

Elemental abundances and ages of $z \sim 0.7$ quiescent galaxies on the mass-size plane: implication for chemical enrichment and star formation quenching

Beverage, A.G.; Kriek, M.; Conroy, C.; Bezanson, R.; Franx, M.; Wel, A. van der

Citation

Beverage, A. G., Kriek, M., Conroy, C., Bezanson, R., Franx, M., & Wel, A. van der. (2021). Elemental abundances and ages of $z \sim 0.7$ quiescent galaxies on the mass-size plane: implication for chemical enrichment and star formation quenching. *Astrophysical Journal Letters*, 917(1). doi:10.3847/2041-8213/ac12cd

Version: Not Applicable (or Unknown)
License: [Leiden University Non-exclusive license](#)
Downloaded from: <https://hdl.handle.net/1887/3263928>

Note: To cite this publication please use the final published version (if applicable).

Elemental Abundances and Ages of $z \sim 0.7$ Quiescent Galaxies on the Mass-Size Plane: Implication for Chemical Enrichment and Star-Formation Quenching

ALIZA G. BEVERAGE,¹ MARISKA KRIEK,¹ CHARLIE CONROY,² RACHEL BEZANSON,³ MARIJN FRANX,⁴ AND
ARJEN VAN DER WEL⁵

¹*Department of Astronomy, University of California, Berkeley, CA 94720, USA*

²*Center for Astrophysics | Harvard & Smithsonian, Cambridge, MA, 02138, USA*

³*Department of Physics and Astronomy, University of Pittsburgh, Pittsburgh, PA 15260, USA*

⁴*Leiden Observatory, Leiden University, P.O.Box 9513, NL-2300 AA Leiden, The Netherlands*

⁵*Sterrenkundig Observatorium, Universiteit Gent, Krijgslaan 281 S9, B-9000 Gent, Belgium*

Submitted to ApJ Letters

ABSTRACT

We present elemental abundances and stellar population ages for 68 massive quiescent galaxies at $0.59 \leq z \leq 0.75$ from the LEGA-C survey. The abundance patterns and ages, derived from full-spectrum modeling, are examined as a function of stellar mass (M_*) and size (i.e., half-light radius; R_e). We find that both $[\text{Mg}/\text{H}]$ and $[\text{Fe}/\text{H}]$ do not vary with stellar mass but are correlated with M_*/R_e for quiescent galaxies with $M_* > 10^{10.5} M_\odot$. Thus, at fixed mass, compact quiescent galaxies are on average more metal rich. This result reinforces the picture that supernova feedback and gravitational potential regulate chemical enrichment. $[\text{Mg}/\text{Fe}]$ does not vary with M_* or M_*/R_e , but there is a marginal positive relation between age and mass. Our results support low-redshift findings that more massive galaxies form their stars at earlier times. However, in contrast to low-redshift studies, star formation timescale does not appear to depend on mass or size. We also compare the mass- $[\text{Fe}/\text{H}]$ and mass- $[\text{Mg}/\text{H}]$ relations to stacks of quiescent galaxies at $z \sim 0$ and find that both relations increase by ~ 0.2 dex over the past 7 Gyr. Furthermore, at $z \sim 0.7$ we find a clear trend with age, such that older quiescent galaxies have lower metallicities. Both results can be explained by a chemical evolution model in which galaxies quench via gas removal. Future work, in particular with *JWST*/NIRSpec, will extend this analysis to higher redshifts, allowing us to fully exploit abundance patterns to study the formation histories of quiescent galaxies.

Keywords: galaxies: evolution — galaxies: formation — galaxies: abundances — galaxies: quenching

1. INTRODUCTION

The metallicity of a galaxy is a fundamental property sensitive to many complex evolutionary processes such as metal production and enrichment, removal of enriched gas via galactic winds, and the accretion of circum/intergalactic gas. It is well established that metallicity is correlated with galaxy mass, wherein galaxies with larger stellar mass are more metal rich (e.g., Lequeux et al. 1979; Tremonti et al. 2004). This so-called mass-metallicity relation (MZR) has been con-

firmed to extend over five decades in stellar mass, flattening at the highest masses (e.g., Tremonti et al. 2004; Gallazzi et al. 2005; Kirby et al. 2013). The MZR holds for both the gas-phase metallicity, as well as the stellar metallicity, and has been observed in both star-forming and quiescent populations. The origin of this relation is still debated, but has historically been attributed to the strength of a galaxy’s potential well; galaxies with larger stellar masses, and thus larger escape velocities, are better at retaining metal-enriched gas (e.g., Larson 1974; Dekel & Silk 1986; Tremonti et al. 2004).

Interestingly, studies of low-redshift galaxies have found that metallicity has a secondary dependence on galaxy size, such that at a fixed mass, smaller galaxies have higher metallicities. This size dependence, which

has been found in both star-forming (e.g., Ellison et al. 2008; Scott et al. 2017; Li et al. 2018; D’Eugenio et al. 2018) and quiescent (McDermid et al. 2015; Barone et al. 2018; Li et al. 2018) populations, reinforces the importance of the gravitational potential in regulating metallicity; at a given mass, smaller galaxies have steeper potential wells.

Whereas the star-forming MZR has been extensively studied out to $z \sim 3.5$ (e.g., Erb et al. 2006; Onodera et al. 2016; Sanders et al. 2020), the quiescent MZR has only been measured out to $z \sim 0.7$ (Gallazzi et al. 2014). Measuring robust metallicities of distant quiescent galaxies is extremely difficult and requires ultra-deep continuum spectroscopy, as it relies on faint absorption lines shifted to NIR wavelengths. Consequently, the few existing studies beyond low-redshift have large uncertainties and/or are based on stacked spectra (Gallazzi et al. 2014; Choi et al. 2014; Leethochawalit et al. 2019).

In this Letter, we utilize the public Large Early Galaxy Astrophysics Census (LEGA-C; van der Wel et al. 2016; Straatman et al. 2018), which has obtained ultra-deep continuum spectra (~ 20 hrs) for 1988 galaxies at $0.6 < z < 1$ in the COSMOS field using VIMOS on the *VLT* with an average signal-to-noise ratio of $S/N \sim 20 \text{ \AA}^{-1}$. We analyze the spectra using a full spectrum modeling code. We then assess how the metal content of quiescent galaxies at $z = 0.6 - 0.75$ relate to their stellar masses and sizes, and study how these relations evolve between $z \sim 0.7$ and $z \sim 0$. Throughout this work we assume a flat Λ CDM cosmology with $\Omega_m = 0.29$ and $H_0 = 69.3 \text{ km s}^{-1} \text{ Mpc}^{-1}$.

2. SAMPLE & METHODS

We use deep continuum spectroscopy from the public Large Early Galaxy Astrophysics Census (LEGA-C), a survey of 3600 galaxies at $0.6 < z < 1$ selected from the UltraVISTA K-band catalog by Muzzin et al. (2013). The deep, high-resolution spectra were collected using the VIMOS multi-object spectrograph at the ESO Very Large Telescope and have an average $S/N \sim 20 \text{ \AA}^{-1}$. For more information on the survey design see van der Wel et al. (2016). For details on the observation and data reduction see Straatman et al. (2018).

We select quiescent galaxies from the second LEGA-C data release (1922 targets), based on the rest-frame $U - V$ and $V - J$ colors, as prescribed in Muzzin et al. (2013). From the 751 quiescent galaxies, we make a selection based on the quality and wavelength range of the spectra. First, to ensure reliable abundance pattern measurements, we require each spectrum to contain at least two FeI lines and one Balmer line ($H\beta$), translating to a required rest-frame wavelength coverage of

$4800 \text{ \AA} < \lambda < 5430 \text{ \AA}$. This wavelength selection effectively sets an upper limit on the redshift ($z = 0.75$). We set the minimum redshift to $z = 0.59$, thereby removing spurious $z \sim 0.3$ galaxies. Second, we select galaxies with rest-frame $S/N > 15 \text{ \AA}^{-1}$ as measured at 5000 \AA . Finally, we visually inspect the 87 remaining spectra and remove five galaxies with obvious emission lines (which are likely AGN or chance alignments with a star-forming galaxy). The initial selection includes 82 quiescent galaxies for which we derive stellar masses and sizes.

2.1. Galaxy Sizes and Stellar Masses

We derive galaxy sizes from the *HST* ACS COSMOS F814W images (Scoville et al. 2007) by fitting a single component Sérsic model with GALFIT (Peng et al. 2010). For each galaxy we make $25''$ cutouts and mask out nearby sources. Similar to the procedure in van der Wel et al. (2014), the Sérsic index is constrained to the values $0.7 \leq n \leq 8$. We define galaxy size (R_e) as the semi-major axis of the ellipse containing half of the total flux of the best-fit model.

We visually inspect the resulting best-fit Sérsic models and residuals and remove one galaxy in a close pair and one with a disturbed morphology (likely due to a recent merger). Additionally, we remove three galaxies with GALFIT-derived Sérsic indices that hit the $n = 8$ constraint.

Next, we derive stellar masses by fitting UltraVISTA photometry with Flexible Stellar Population Synthesis (FSPS Conroy et al. 2009) templates using the FAST fitting code (Kriek et al. 2009). We assume a delayed exponentially declining star formation history, the Chabrier (2003) IMF, and the Kriek & Conroy (2013) dust attenuation law. We also assume solar metallicity to facilitate comparison to other studies. We correct the stellar masses such that they are consistent with the GALFIT profiles by multiplying them by the ratio of the GALFIT-derived F814W flux and the interpolated F814W flux from the photometric catalog. On average, this procedure increases the stellar mass by 4%. Furthermore, we increase the masses by 0.1 dex to correct for a systematic offset between the space-based 3D-*HST* and ground-based UltraVISTA photometry (see Mowla et al. 2019).

We determine the mass-completeness limit using all available quiescent galaxies at $0.59 < z < 0.75$ (272). The limit is calculated by scaling galaxies down to the same mass and adjusting their S/N at rest-frame 5000 \AA accordingly. We find that the sample is 95% complete at $M = 10^{10.5} M_\odot$. The distribution of these 272 galaxies in stellar mass - S/N space is shown in the left panel of Figure 1.

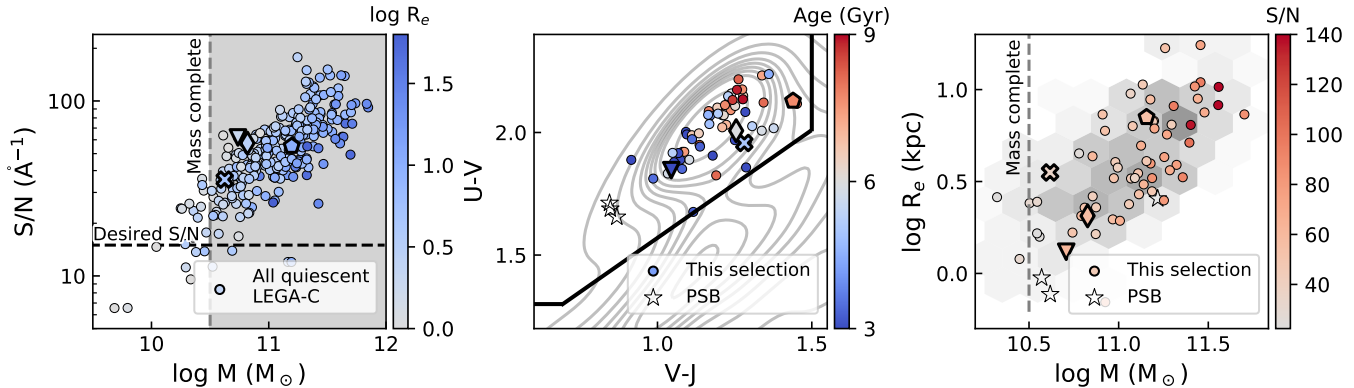


Figure 1. *Left:* The distribution of stellar mass and S/N at rest-frame 5000 \AA of all available quiescent LEGA-C galaxies in the redshift range $0.6 < z < 0.75$ colored by their half-light radius. The 95% mass completeness limit ($\log M_*/M_\odot = 10.5$) and required rest-frame S/N ($= 15 \text{ \AA}^{-1}$) are marked. Not all galaxies with $S/N > 15$ are included in the final sample, as we require that the spectra cover $\lambda = 4800 - 5430 \text{ \AA}$. *Center:* The selected sample in UVJ space colored by stellar age, as derived from `alf`. The contours represent the full LEGA-C sample. *Right:* The selected sample in mass-size space colored by S/N at rest-frame 5000 \AA . The density map of parent quiescent sample from the left panel is shown underneath. In all panels we highlight four galaxies using different symbols which correspond to the galaxies in Fig. 2.

2.2. Elemental Abundances

We derive the elemental abundances for the remaining 77 galaxies using the full spectrum absorption line fitter (`alf`) code (Conroy & van Dokkum 2012; Conroy et al. 2018). This method is preferred over the use of specific features (i.e., Lick indices) because it can leverage the entire spectrum and is better at dealing with (non-Gaussian) noise due to OH lines or instrumental artifacts. `alf` fits optical–NIR spectra of quiescent populations older than $\gtrsim 1$ Gyr and uses libraries of isochrones and empirical stellar spectra (Sanchez-Blazquez et al. 2006; Choi et al. 2016; Villaume et al. 2017), along with synthetic spectra covering a wide range of elemental abundances. In the analysis presented here, we use `alf` in *simple* mode, which fits for 13 parameters; a single stellar age, velocity dispersion, velocity offset, metallicity scaling, and the abundances of 9 elements (Fe, O, C, N, Na, Mg, Si, Ca, Ti). We assume the Kroupa (2001) IMF, fit using a single burst star formation history, and use metallicity-independent response functions. We also set a maximum age of 10 Gyr, which is the age of the universe at $z = 0.75 + 1$ Gyr.

Given the flexibility of `alf`, we run many tests to ensure the robustness of our measurements. These tests include: fitting without the age-sensitive CaII HK lines, allowing for two bursts of star formation, and with and without emission. The results of these tests are all within error of the analysis presented here.

After fitting, we visually inspect the best-fit `alf` models and the corresponding corner plots. Galaxies with unconstrained ages or metallicities, or those that run up against the upper-limit age prior are removed from

the sample. Many of these galaxies have obvious skyline contamination near key absorption features. After removing these nine galaxies, we are left with the final sample of 68 galaxies. We identify the post-starburst (PSB) galaxies in the final sample by assigning each galaxy a photometric age following the prescription in Belli et al. (2019) and selecting galaxies with ages ≤ 900 Myr. Figure 1 shows the distribution of the final sample in UVJ (center) and mass-size (right) space. The two galaxies that fall below the mass-completeness limit (see mass-size figure) are removed from the following analysis. Figure 2 shows LEGA-C spectra along with their corresponding best-fit `alf` models for four representative galaxies.

3. CHEMICAL ABUNDANCES OF $z \sim 0.7$ QUIESCENT GALAXIES

In this section, we investigate the dependence of elemental abundances and stellar population ages on galaxy mass and size for quiescent galaxies at $z \sim 0.7$. In the left and middle column of Fig. 3 we show $[\text{Mg}/\text{H}]$, $[\text{Fe}/\text{H}]$, $[\text{Mg}/\text{Fe}]$, and age versus stellar mass and mass-to-radius ratio (M_*/R_e). We use M_*/R_e instead of velocity dispersion σ ($\propto M/R$), as the quiescent LEGA-C galaxies have been found to be partially rotationally-supported (Bezanson et al. 2018). For each panel, we fit to all galaxies with a linear regression, where the confidence intervals are determined by perturbing each data point in the y-direction according to their uncertainties. In the right column we show the mean trends of the stellar population parameters on the mass-size plane, where the properties have been smoothed using the Lo-

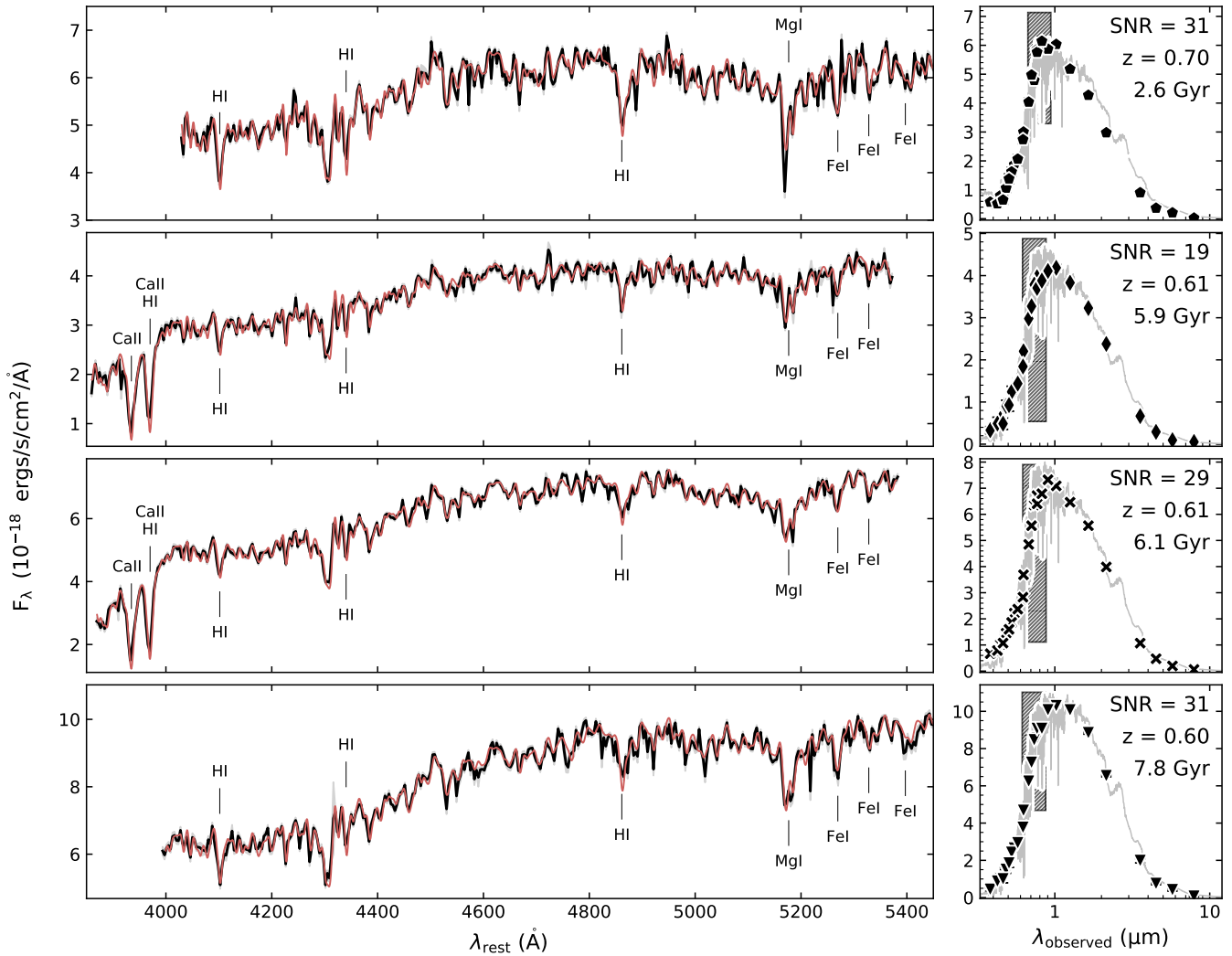


Figure 2. *Left:* LEGA-C spectra for 4 representative galaxies (black) with 1σ uncertainties in gray. For displaying purposes the spectra are binned by 10 pixels, corresponding to ~ 3.5 rest-frame Å per bin. The best-fit `alf` model is shown in red. *Right:* The corresponding photometry along with the best-fit FSPS model. The gray boxes represents the extent of the left panels. The symbols used for the photometry match those in Fig. 1.

cally Weighted Regression (LOESS; Cleveland & Devlin 1988) python package (Cappellari et al. 2013).

We first consider $[\text{Mg}/\text{H}]$ and $[\text{Fe}/\text{H}]$. Mg, an α -element, is almost exclusively produced in the cores of massive stars and released via core-collapse supernovae. Given the short lifetime of massive stars, Mg is almost instantaneously released and recycled and is thus a good tracer of the overall enrichment. Fe-peak elements are also produced in the cores of massive stars, but are predominantly forged during Type Ia supernovae. The latter descend from remnants of long-lived, low mass stars, and as such, Type Ia supernovae products are only recycled if star formation is still ongoing. Thus, $[\text{Fe}/\text{H}]$ depends both on the overall metal enrichment *and* the duration of star formation. Interestingly, as seen in the

first two rows of Fig. 3, both $[\text{Fe}/\text{H}]$ and $[\text{Mg}/\text{H}]$ correlate with M_*/R_e , but not with M_* , despite their different enrichment mechanisms. These trends are especially apparent in the mass-size panels.

Our results are consistent with studies at low- z that find a flattening of the quiescent MZR at the highest masses (Gallazzi et al. 2005; Peng et al. 2015), but show a strong increasing trend with M_*/R_e (Barone et al. 2018). Studies of high-mass quiescent galaxies at $z \sim 0.5$ find similarly shallow mass- $[\text{Fe}/\text{H}]$ and mass- $[\text{Mg}/\text{H}]$ relations for stacks of galaxies (Choi et al. 2014) and cluster galaxies (Leethochawalit et al. 2019). Gallazzi et al. (2014) also find a slope for the MZR consistent with zero at $z \sim 0.7$ using Lick indices; this is the only

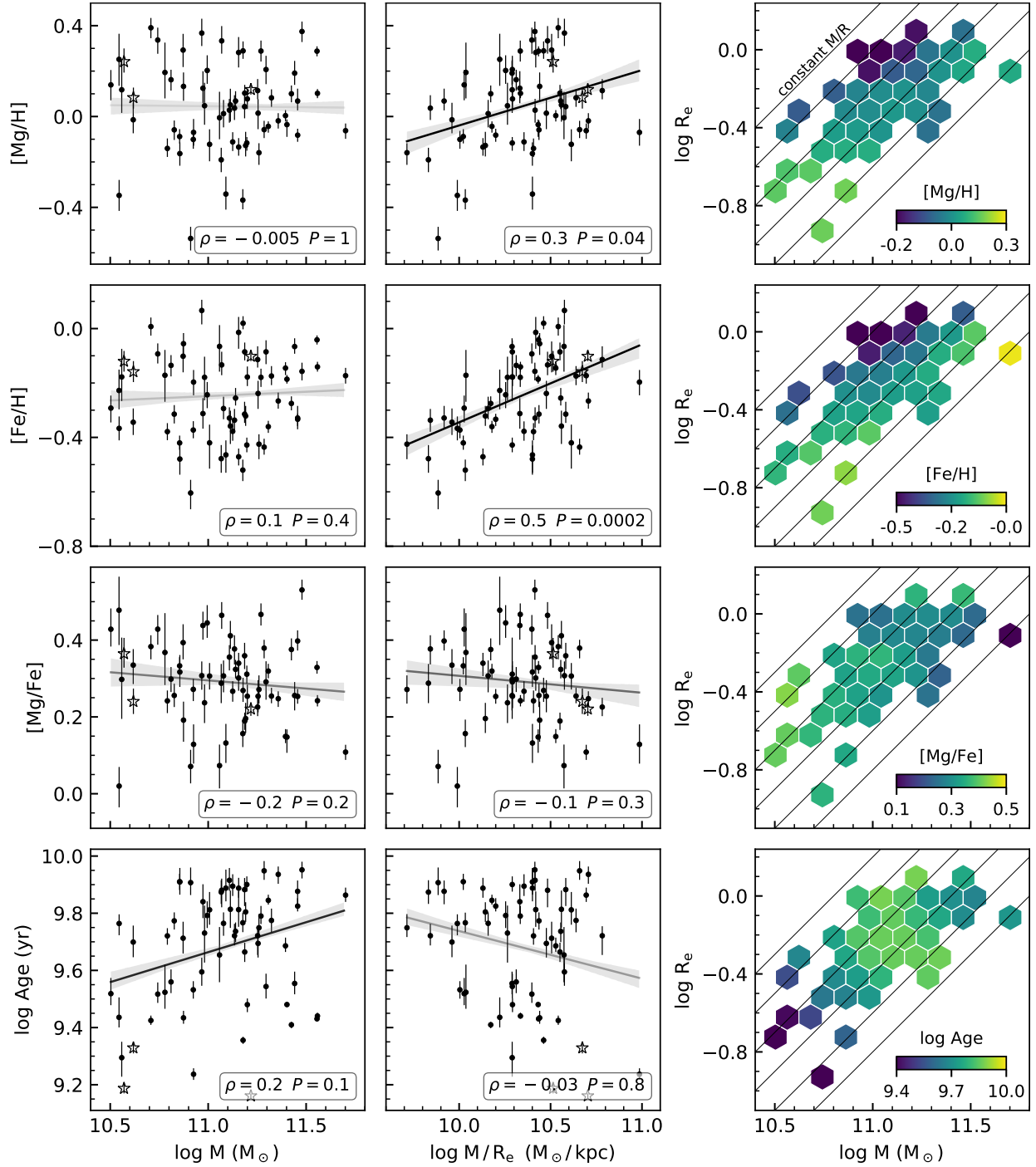


Figure 3. Correlation between [Mg/H], [Fe/H], [Mg/Fe], and stellar age with stellar mass (left) and M_*/R_e (middle). The right column shows the parameters on the mass-size plane, averaged using the LOESS algorithm. In the first two columns, PSBs are identified by stars. In the bottom right corner of these panels we show the P -value from a Spearman correlation test. Correlations with P -values less than $P < 0.05$ are considered significant. The best-fit linear relations are shown in each panel, with the shaded regions showing the 1σ confidence intervals. The transparency of the best-fit lines are a reflection of the P -value. [Mg/H] and [Fe/H] show no trend with M_* but are significantly correlated with M_*/R_e .

study of the quiescent MZR at a comparable redshift to this study.

Our results show, for the first time, that size plays an important role in regulating the elemental abundances of massive quiescent galaxies beyond $z \sim 0.1$; while the trends with M_* are mostly flat, we find strong correlations with M_*/R_e . This result implies that chemical enrichment is regulated by the strength of the potential well, as M_*/R_e is a better tracer of the gravitational potential than just M_* ($\Phi \propto M/R$). The flattening of the abundances with M_* is thought to be due to minor mergers, as more massive galaxies accrete more metal-poor satellites. This flattening is not as prominent in the M_*/R_e relations, possibly because compact metal-rich satellites sink to the center of progenitors, whereas diffuse metal-poor satellites distribute around the outskirts (Boylan-Kolchin & Ma 2007; Amorisco 2017). Thus, minor mergers may reinforce the M_*/R_e relations (see discussion in Barone et al. 2018).

Next, we look at [Mg/Fe] and stellar population age. Since [Mg/H] and [Fe/H] enrich on different timescales, [Mg/Fe] is a direct tracer of how quickly a galaxy formed its stars. [Mg/Fe] is often discussed in tandem with age, as the combination of the two quantities provides a strong constraint on when and how quickly galaxies formed their stellar mass. As shown in the bottom two rows of Fig. 3, [Mg/Fe] does not correlate with M_* or M_*/R_e , while age marginally correlates with M_* .

Our [Mg/Fe] and age results are similar to findings at low redshifts. At $z \sim 0$, the M_*/R_e –[Mg/Fe] and M_*/R_e –age trends are shallow and the mass–[Mg/Fe] and mass–age relations flatten above $\log M_*/M_\odot \gtrsim 10.5$ (McDermid et al. 2015; Scott et al. 2017; Barone et al. 2018). Our results also agree with studies at $z \sim 0.5$ that find little to no correlation between mass and [Mg/Fe], but a positive correlation between mass and age (Leethochawalit et al. 2019; Choi et al. 2014; Gallazzi et al. 2014), and no correlation between galaxy age and size (e.g., Zanella et al. 2016; Fagioli et al. 2016). Drawing from the same LEGA-C parent sample, Wu et al. (2018) find that at a fixed mass, smaller quiescent galaxies actually tend to be older using $D_n(4000)$, but they ignore the $D_n(4000)$ metallicity dependence. In this study, we find a strong correlation between metallicity and galaxy size, thus explaining larger $D_n(4000)$ for smaller galaxies.

Our age results imply that the integrated SFHs of all the stars currently in a galaxy (both in-situ and accreted) only slightly depend on mass, with more massive galaxies forming at higher redshift. Our [Mg/Fe] results indicate no clear trend between the star formation timescale and stellar mass. However, the interpretation

is not straightforward, as both minor mergers and star formation timescales affect [Mg/Fe]. To break this degeneracy, studies need to push to higher redshifts, where the effect of mergers is less significant. Indeed, recent single-object studies have found that massive quiescent galaxies at $z \sim 2$ are extremely α -enhanced, a result that is in favor of evolution via minor mergers (Kriek et al. 2016; Jafariyazani et al. 2020).

4. EVOLUTION IN THE MASS-METALLICITY RELATION

Next, we investigate the evolution of the quiescent MZR between $z \sim 0.7$ and $z \sim 0$. In Fig. 4 we show [Mg/H], [Fe/H], and [Mg/Fe] as a function of stellar mass, colored by stellar population age. We compare these results with stacks of $z \sim 0$ SDSS galaxies from Conroy et al. (2014) that have been fit using the procedure in Section 2.2. We find that, at a given mass, there is ~ 0.2 dex of evolution in both the mass–[Mg/H] and mass–[Fe/H] relations between $z \sim 0$ and $z \sim 0.7$, and that younger galaxies have higher [Fe/H] and [Mg/H]. Interestingly, at $z \sim 0.7$ Gallazzi et al. (2014) find no evolution using Lick indices. However, the uncertainties on their metallicities are significantly larger than in this work. At $z \sim 0.5$, Choi et al. (2014) and Leethochawalit et al. (2019) find that metal abundances are ~ 0.1 dex lower using full spectral modeling, in broad agreement with our results.

Since quiescent galaxies are, by definition, no longer forming stars, they are unable to change their stellar metallicities by star formation. Instead, metallicities can change by either minor mergers or population growth (i.e., progenitor bias). The observed MZR evolution cannot be explained by minor mergers, as the accretion of low-mass metal-poor satellites would *decrease* the metallicity of the progenitor galaxy. Progenitor bias, in contrast, can explain the observed evolution only if galaxies that quench at later times also have higher metallicities. Indeed in Fig. 4 we observe that younger galaxies have higher [Mg/H] and [Fe/H].

To understand why galaxies that quench at later times have higher metallicities, we turn to chemical evolution models. We utilize solutions from Spitoni et al. (2017), which assume an exponentially decreasing inflow rate with timescale τ , a linear Schmidt (1959) law, and an outflow rate proportional to the star formation rate (SFR) with a mass loading factor λ . In the first row of Fig. 5 we show solutions for the inflow rate, SFR, and mass-weighted metallicity for model galaxies with five different inflow timescales. In the second row of Fig. 5 we show the same model galaxies, except the star formation and gas inflows are instantaneously terminated

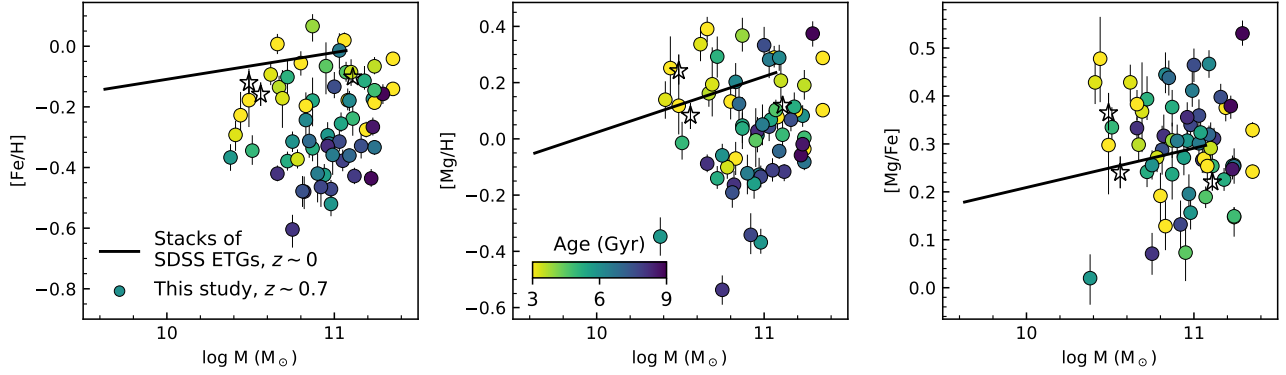


Figure 4. The mass-[Fe/H] (left), mass-[Mg/H] (center), and mass-[Mg/Fe] (right) relations colored by stellar age. The black lines show the results from stacks of local quiescent SDSS galaxies from [Conroy et al. \(2014\)](#). We find ~ 0.2 dex evolution in the mass-[Mg/H] and mass-[Fe/H] relations, and a clear trend between metallicity and stellar age at $z \sim 0.7$, such that younger galaxies are more metal rich. We find no such trend or evolution in the mass-[Mg/Fe] relation.

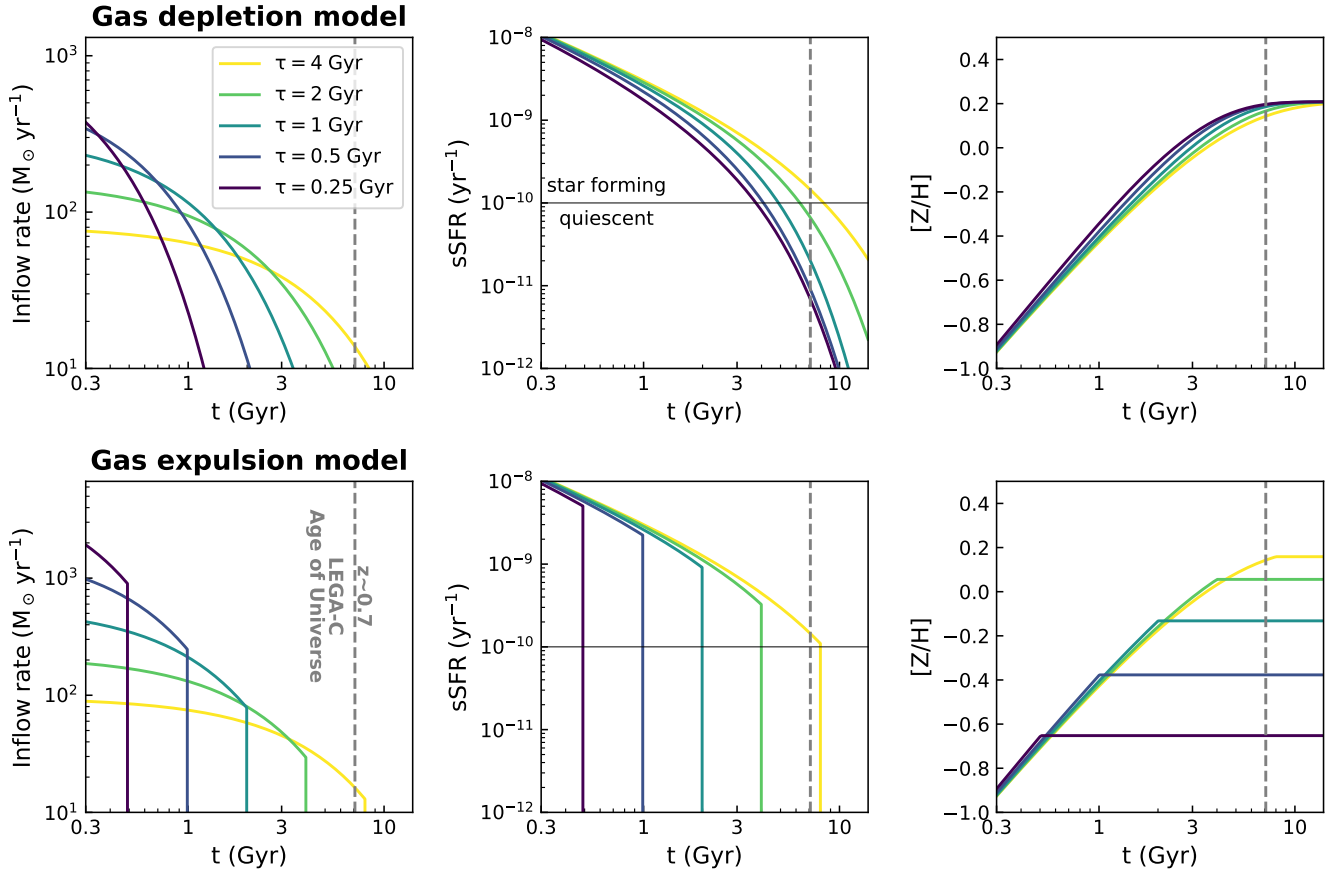


Figure 5. Results from a chemical evolution model with an exponentially declining inflow rate for five different inflow timescales, τ . The left, middle, and right panels show the inflow rate, specific SFR, and mass-weighted stellar metallicity $[Z/H]$, respectively. The top row is the “gas depletion” model with solutions directly from [Spitoni et al. \(2017\)](#). The bottom row is the “gas expulsion” model where inflows from the [Spitoni et al. \(2017\)](#) model are terminated and the remaining star-forming material is removed after two e -folding times. Both models assume a star formation efficiency $\epsilon = 0.5 \text{ Gyr}^{-1}$, a [Chabrier \(2003\)](#) IMF, and SNe feedback with a mass loading factor $\lambda = 1$. The gas expulsion model successfully reproduces both the observed age-metallicity trend and the MZR evolution.

after two e -folding times (e.g., AGN feedback). Thus, the first model represents quenching via smooth gas depletion while in the second model the quenching happens much more abruptly via gas expulsion¹, in particular for early quenchers. In both models, the four galaxies with the shortest star-formation timescales would be identified as quiescent at the LEGA-C redshift, whereas the fifth and youngest model with the highest metallicity would only be added to the quiescent population at later times (thus identified as quiescent by $z = 0$).

In the smooth gas depletion model, all quiescent galaxies end up with the same high metallicity by $z = 0$ no matter their star formation timescale. Thus, this model fails to reproduce the observed evolution. In the gas expulsion model, however, we find that the younger galaxies – those that quench at later times – are more metal-enriched. Galaxies that quench at earlier times shut off their star formation when the inflow rate is still high and thus the gas-phase metallicity is still low. The galaxies that quench at later times, however, have a lower inflow rate and thus higher gas-phase metallicity when they quench, leading to a higher stellar metallicity. The $[Z/H]$ panel shows that the gas expulsion model is successful at reproducing the observed age-metallicity trend found in Fig. 4. The same model can also explain the observed MZR evolution; galaxies that quench before $z \sim 0.7$ have lower metallicities than those that quench at later times. Thus, in this model, the average metallicity of the quiescent population increases over cosmic time.

Finally, we turn to $[Mg/Fe]$. In the rightmost panel of Fig. 4 we find no $[Mg/Fe]$ evolution between $z \sim 0.7$ and $z \sim 0$, and no clear trend with age. This result is consistent with the work by Leethochawalit et al. (2019) and Choi et al. (2014) who find little to no $[Mg/Fe]$ evolution out to $z \sim 0.54$. The lack of $[Mg/Fe]$ evolution is hard to interpret because it can be affected by both the star formation history and minor mergers. Both processes should decrease the mass- $[Mg/Fe]$ relation over time, however, in reality, these effects are subtle due to the shallowness of the mass- $[Mg/Fe]$ relation and the weakened sensitivity of $[Mg/Fe]$ at longer star formation timescales. In order to disentangle both effects, we need to push current studies to higher redshifts, where the effects of mergers are less significant and difference in star formation histories are easier to measure.

¹ The star-formation quenching does not need to be instantaneous, and can instead be modelled as a leaky box with a large mass loading factor.

5. SUMMARY & CONCLUSION

In this Letter we derive chemical abundances and stellar population ages for 68 massive quiescent galaxies from the LEGA-C survey at $z \sim 0.7$ and examine them as a function of mass and size. We find that $[Mg/H]$ and $[Fe/H]$ do not vary with M_* but are correlated with M_*/R_e , reinforcing the picture that the strength of the gravitational potential was instrumental in regulating their chemical enrichment. We also find that age and M_* are marginally correlated, but that $[Mg/Fe]$ does not vary with M_* . These results suggest that star formation timescales are independent of mass and size and that more massive galaxies formed their stars earlier.

Through comparison with stacks of $z \sim 0$ quiescent galaxies from SDSS, we find that the mass- $[Mg/H]$ and mass- $[Fe/H]$ relations increased by ~ 0.2 dex since $z \sim 0.7$. Furthermore, we find that older galaxies at $z \sim 0.7$ have lower metallicities. The observed evolution and age trend can be explained in a chemical evolution model where galaxies quench via a major outflow event (e.g., AGN feedback).

This study was enabled by the ultra-deep LEGA-C spectra, which, in combination with full spectrum modeling techniques, has provided the most robust measurements of chemical abundances at $z \sim 0.7$. Our results highlight how ultra-deep spectra can be harnessed to uncover the star-formation and chemical enrichment histories of quiescent galaxies, and further demonstrate that metallicities can be used to constrain star-formation quenching (see also Peng et al. 2015; Spitoni et al. 2017; Trussler et al. 2020). In the future, ultra-deep ground-based surveys and *JWST*/NIRSpec will enable the extension of this analysis, allowing for better constraints on the quiescent MZR, its evolution, and its dependence on galaxy size.

We would like to thank Andrew Newman for useful conversations about `alf` fitting, Brittany Vanderhoof, Jeyhan Kartaltepe, and Caitlin Rose for sharing the COSMOS F814W PSF and useful discussion regarding size fitting, and the LEGA-C team for making their dataset public. We acknowledge support from NSF AAG grants AST-1908748 and 1909942.

REFERENCES

- Amorisco, N. C. 2017, *Monthly Notices of the Royal Astronomical Society*, 464, 2882, doi: [10.1093/mnras/stw2229](https://doi.org/10.1093/mnras/stw2229)
- Barone, T. M., D'Eugenio, F., Colless, M., et al. 2018, *The Astrophysical Journal*, 856, 64, doi: [10.3847/1538-4357/aaaf6e](https://doi.org/10.3847/1538-4357/aaaf6e)
- Belli, S., Newman, A. B., & Ellis, R. S. 2019, *The Astrophysical Journal*, 874, 17, doi: [10.3847/1538-4357/ab07af](https://doi.org/10.3847/1538-4357/ab07af)
- Bezanson, R., van der Wel, A., Pacifici, C., et al. 2018, *The Astrophysical Journal*, 858, 60, doi: [10.3847/1538-4357/aabc55](https://doi.org/10.3847/1538-4357/aabc55)
- Boylan-Kolchin, M., & Ma, C.-P. 2007, *Monthly Notices of the Royal Astronomical Society*, 374, 1227, doi: [10.1111/j.1365-2966.2006.11276.x](https://doi.org/10.1111/j.1365-2966.2006.11276.x)
- Cappellari, M., McDermid, R. M., Alatalo, K., et al. 2013, *Monthly Notices of the Royal Astronomical Society*, 432, 1862, doi: [10.1093/mnras/stt644](https://doi.org/10.1093/mnras/stt644)
- Chabrier, G. 2003, *Publications of the Astronomical Society of the Pacific*, 115, 763, doi: [10.1086/376392](https://doi.org/10.1086/376392)
- Choi, J., Conroy, C., Moustakas, J., et al. 2014, *The Astrophysical Journal*, 792, 95, doi: [10.1088/0004-637X/792/2/95](https://doi.org/10.1088/0004-637X/792/2/95)
- Choi, J., Dotter, A., Conroy, C., et al. 2016, *The Astrophysical Journal*, 823, 102, doi: [10.3847/0004-637X/823/2/102](https://doi.org/10.3847/0004-637X/823/2/102)
- Cleveland, W. S., & Devlin, S. J. 1988, *Journal of the American Statistical Association*, 83, 596, doi: [10.2307/2289282](https://doi.org/10.2307/2289282)
- Conroy, C., Graves, G. J., & van Dokkum, P. G. 2014, *The Astrophysical Journal*, 780, 33, doi: [10.1088/0004-637X/780/1/33](https://doi.org/10.1088/0004-637X/780/1/33)
- Conroy, C., Gunn, J. E., & White, M. 2009, *The Astrophysical Journal*, 699, 486, doi: [10.1088/0004-637X/699/1/486](https://doi.org/10.1088/0004-637X/699/1/486)
- Conroy, C., & van Dokkum, P. 2012, *The Astrophysical Journal*, 760, 71, doi: [10.1088/0004-637X/760/1/71](https://doi.org/10.1088/0004-637X/760/1/71)
- Conroy, C., Villaume, A., van Dokkum, P., & Lind, K. 2018, *The Astrophysical Journal*, 854, 139, doi: [10.3847/1538-4357/aaab49](https://doi.org/10.3847/1538-4357/aaab49)
- Dekel, A., & Silk, J. 1986, *The Astrophysical Journal*, 303, 39, doi: [10.1086/164050](https://doi.org/10.1086/164050)
- D'Eugenio, F., Colless, M., Groves, B., Bian, F., & Barone, T. M. 2018, *Monthly Notices of the Royal Astronomical Society*, 479, 1807, doi: [10.1093/mnras/sty1424](https://doi.org/10.1093/mnras/sty1424)
- Ellison, S. L., Patton, D. R., Simard, L., & McConnachie, A. W. 2008, *The Astrophysical Journal*, 672, L107, doi: [10.1086/527296](https://doi.org/10.1086/527296)
- Erb, D. K., Shapley, A. E., Pettini, M., et al. 2006, *The Astrophysical Journal*, 644, 813, doi: [10.1086/503623](https://doi.org/10.1086/503623)
- Fagioli, M., Carollo, C. M., Renzini, A., et al. 2016, *The Astrophysical Journal*, 831, 173, doi: [10.3847/0004-637X/831/2/173](https://doi.org/10.3847/0004-637X/831/2/173)
- Gallazzi, A., Bell, E. F., Zibetti, S., Brinchmann, J., & Kelson, D. D. 2014, *The Astrophysical Journal*, 788, 72, doi: [10.1088/0004-637X/788/1/72](https://doi.org/10.1088/0004-637X/788/1/72)
- Gallazzi, A., Charlot, S., Brinchmann, J., White, S. D. M., & Tremonti, C. A. 2005, *Monthly Notices of the Royal Astronomical Society*, 362, 41, doi: [10.1111/j.1365-2966.2005.09321.x](https://doi.org/10.1111/j.1365-2966.2005.09321.x)
- Jafariyazani, M., Newman, A. B., Mobasher, B., et al. 2020, *The Astrophysical Journal*, 897, L42, doi: [10.3847/2041-8213/aba11c](https://doi.org/10.3847/2041-8213/aba11c)
- Kirby, E. N., Cohen, J. G., Guhathakurta, P., et al. 2013, *The Astrophysical Journal*, 779, 102, doi: [10.1088/0004-637X/779/2/102](https://doi.org/10.1088/0004-637X/779/2/102)
- Kriek, M., & Conroy, C. 2013, *The Astrophysical Journal*, 775, L16, doi: [10.1088/2041-8205/775/1/L16](https://doi.org/10.1088/2041-8205/775/1/L16)
- Kriek, M., van Dokkum, P. G., Labbé, I., et al. 2009, *The Astrophysical Journal*, 700, 221, doi: [10.1088/0004-637X/700/1/221](https://doi.org/10.1088/0004-637X/700/1/221)
- Kriek, M., Conroy, C., van Dokkum, P. G., et al. 2016, *Nature*, 540, 248, doi: [10.1038/nature20570](https://doi.org/10.1038/nature20570)
- Kroupa, P. 2001, *Monthly Notices of the Royal Astronomical Society*, 322, 231, doi: [10.1046/j.1365-8711.2001.04022.x](https://doi.org/10.1046/j.1365-8711.2001.04022.x)
- Larson, R. B. 1974, *Monthly Notices of the Royal Astronomical Society*, 169, 229, doi: [10.1093/mnras/169.2.229](https://doi.org/10.1093/mnras/169.2.229)
- Leethochawalit, N., Kirby, E. N., Ellis, R. S., Moran, S. M., & Treu, T. 2019, *The Astrophysical Journal*, 885, 100, doi: [10.3847/1538-4357/ab4809](https://doi.org/10.3847/1538-4357/ab4809)
- Lequeux, J., Peimbert, M., Reyo, J., Serrano, A., & Torres-Peimbert, S. 1979, *Astronomy & Astrophysics*, 500, 145. <http://articles.adsabs.harvard.edu/pdf/1979A%26A....80..155L>
- Li, H., Mao, S., Cappellari, M., et al. 2018, *Monthly Notices of the Royal Astronomical Society*, 476, 1765, doi: [10.1093/mnras/sty334](https://doi.org/10.1093/mnras/sty334)
- McDermid, R. M., Alatalo, K., Blitz, L., et al. 2015, *Monthly Notices of the Royal Astronomical Society*, 448, 3484, doi: [10.1093/mnras/stv105](https://doi.org/10.1093/mnras/stv105)
- Mowla, L. A., Dokkum, P. v., Brammer, G. B., et al. 2019, *The Astrophysical Journal*, 880, 57, doi: [10.3847/1538-4357/ab290a](https://doi.org/10.3847/1538-4357/ab290a)

- Muzzin, A., Marchesini, D., Stefanon, M., et al. 2013, *The Astrophysical Journal Supplement Series*, 206, 8, doi: [10.1088/0067-0049/206/1/8](https://doi.org/10.1088/0067-0049/206/1/8)
- Onodera, M., Carollo, C. M., Lilly, S., et al. 2016, *The Astrophysical Journal*, 822, 42, doi: [10.3847/0004-637X/822/1/42](https://doi.org/10.3847/0004-637X/822/1/42)
- Peng, C. Y., Ho, L. C., Impey, C. D., & Rix, H.-W. 2010, 139, 33
- Peng, Y., Maiolino, R., & Cochrane, R. 2015, *Nature*, 521, 192, doi: [10.1038/nature14439](https://doi.org/10.1038/nature14439)
- Sanchez-Blazquez, P., Peletier, R. F., Jimenez-Vicente, J., et al. 2006, *Monthly Notices of the Royal Astronomical Society*, 371, 703, doi: [10.1111/j.1365-2966.2006.10699.x](https://doi.org/10.1111/j.1365-2966.2006.10699.x)
- Sanders, R. L., Shapley, A. E., Jones, T., et al. 2020, arXiv:2009.07292 [astro-ph]. <http://arxiv.org/abs/2009.07292>
- Schmidt, M. 1959, *The Astrophysical Journal*, 129, 243, doi: [10.1086/146614](https://doi.org/10.1086/146614)
- Scott, N., Brough, S., Croom, S. M., et al. 2017, *Monthly Notices of the Royal Astronomical Society*, 472, 2833, doi: [10.1093/mnras/stx2166](https://doi.org/10.1093/mnras/stx2166)
- Scoville, N., Aussel, H., Brusa, M., et al. 2007, *The Astrophysical Journal Supplement Series*, 172, 1, doi: [10.1086/516585](https://doi.org/10.1086/516585)
- Spitoni, E., Vincenzo, F., & Matteucci, F. 2017, *Astronomy & Astrophysics*, 599, A6, doi: [10.1051/0004-6361/201629745](https://doi.org/10.1051/0004-6361/201629745)
- Straatman, C. M. S., Wel, A. v. d., Bezanson, R., et al. 2018, *The Astrophysical Journal Supplement Series*, 239, 27, doi: [10.3847/1538-4365/aae37a](https://doi.org/10.3847/1538-4365/aae37a)
- Tremonti, C. A., Heckman, T. M., Kauffmann, G., et al. 2004, *The Astrophysical Journal*, 613, 898, doi: [10.1086/423264](https://doi.org/10.1086/423264)
- Trussler, J., Maiolino, R., Maraston, C., et al. 2020, *Monthly Notices of the Royal Astronomical Society*, 491, 5406, doi: [10.1093/mnras/stz3286](https://doi.org/10.1093/mnras/stz3286)
- van der Wel, A., Franx, M., van Dokkum, P. G., et al. 2014, *The Astrophysical Journal*, 788, 28, doi: [10.1088/0004-637X/788/1/28](https://doi.org/10.1088/0004-637X/788/1/28)
- van der Wel, A., Noeske, K., Bezanson, R., et al. 2016, *The Astrophysical Journal Supplement Series*, 223, 29, doi: [10.3847/0067-0049/223/2/29](https://doi.org/10.3847/0067-0049/223/2/29)
- Villaume, A., Conroy, C., Johnson, B., et al. 2017, *The Astrophysical Journal Supplement Series*, 230, 23, doi: [10.3847/1538-4365/aa72ed](https://doi.org/10.3847/1538-4365/aa72ed)
- Wu, P.-F., van der Wel, A., Bezanson, R., et al. 2018, *The Astrophysical Journal*, 868, 37, doi: [10.3847/1538-4357/aae822](https://doi.org/10.3847/1538-4357/aae822)
- Zanella, A., Scarlata, C., Corsini, E. M., et al. 2016, *The Astrophysical Journal*, 824, 68, doi: [10.3847/0004-637X/824/2/68](https://doi.org/10.3847/0004-637X/824/2/68)