



Universiteit
Leiden
The Netherlands

An abstract Agent-Based Model (ABM) for herd movement in the Khabur Basin, the Jazira

Kalaycı, T.; Wainwright, J.; Recht, L.; Tsouparopoulou, C.

Citation

Kalaycı, T. (2021). An abstract Agent-Based Model (ABM) for herd movement in the Khabur Basin, the Jazira. In L. Recht & C. Tsouparopoulou (Eds.), *Fierce lions, angry mice and fat-tailed sheep*. Cambridge, UK: McDonald Institute for Archaeological Research. Retrieved from <https://hdl.handle.net/1887/3263590>

Version: Publisher's Version

License: [Creative Commons CC BY-NC-ND 4.0 license](https://creativecommons.org/licenses/by-nc-nd/4.0/)

Downloaded from: <https://hdl.handle.net/1887/3263590>

Note: To cite this publication please use the final published version (if applicable).



McDONALD INSTITUTE CONVERSATIONS

Fierce lions, angry mice and fat-tailed sheep

Animal encounters
in the ancient Near East

Edited by Laerke Recht & Christina Tsouparopoulou



Fierce lions, angry mice
and fat-tailed sheep



McDONALD INSTITUTE CONVERSATIONS

Fierce lions,
angry mice and
fat-tailed sheep
Animal encounters
in the ancient Near East

Edited by Laerke Recht
& Christina Tsouparopoulou

with contributions from

Francesca Alhaique, Troels Pank Arbøll, Laura Battini, Malwina Brachmańska,
Franco D'Agostino, Anne Devillers, Hekmat Dirbas, Neil Erskine, Marina Fadum,
Jill Goulder, Haskel J. Greenfield, Tina L. Greenfield, Ben Greet, Carina Gruber,
Tuna Kalaycı, Michael Kozuh, Aren M. Maeir, Timothy Matney, Alice Mouton,
Seraina Nett, Olga V. Popova, Louise Quillien, Laerke Recht, Licia Romano, Jon Ross,
Szilvia Sövegjártó, Christina Tsouparopoulou, Lorenzo Verderame, Andréa Vilela,
John Wainwright & Chikako E. Watanabe

Published by:

McDonald Institute for Archaeological Research
University of Cambridge
Downing Street
Cambridge, UK
CB2 3ER
(0)(1223) 339327
eaj31@cam.ac.uk
www.mcdonald.cam.ac.uk



McDonald Institute for Archaeological Research, 2021

© 2021 McDonald Institute for Archaeological Research.
Fierce lions, angry mice and fat-tailed sheep is made available
under a Creative Commons Attribution-NonCommercial-
NoDerivatives 4.0 (International) Licence:
<https://creativecommons.org/licenses/by-nc-nd/4.0/>

ISBN: 978-1-913344-05-4

On the cover: *Shepherd with sheep, palace ruins in background,*
photograph taken by Gertrude Bell at Mashetta, Jordan in March 1900;
A_232, The Gertrude Bell archive, Newcastle University.

Cover design by Dora Kemp and Ben Plumridge.
Typesetting and layout by Ben Plumridge.

Edited for the Institute by Cyprian Broodbank (*Acting Series Editor*).

CONTENTS

Contributors	vii
Figures	ix
Tables	xi
Abbreviations and sigla	xiii
Preface by Augusta McMahon	xvii
<i>Chapter 1</i> Introduction: encountering animals in the ancient Near East	1
LAERKE RECHT & CHRISTINA TSOUPAROPOULOU	
Animal agency and human-animal interactions	2
Animals in ritual and cult	3
Blurred lines: humans as animal, animals as humans	4
Managing animals	5
Animals in society and as a resource	5
Symbols of power: birds	7
Companions and working animals: equids and dogs	8
Avenues for future research	9
Part I Animal agency and human–animal interactions	
<i>Chapter 2</i> Animal agents in Sumerian literature	15
LORENZO VERDERAME	
The Fox in <i>Enki and Ninhursaĝa</i>	15
Dumuzi and the Fly	16
Lugalbanda and Anzu	17
Ninurta and the Anzu’s chick	18
Inanna, Šukaletuda, and the Raven	18
Conclusions: magical helpers and the metamorphosis human-animal	19
<i>Chapter 3</i> Canines from inside and outside the city: of dogs, foxes and wolves in conceptual spaces in Sumero-Akkadian texts	23
ANDRÉA VILELA	
Canines from the ‘inside’: dogs	23
Canines from the ‘in-between’: stray dogs	25
Canines from the outside: wolves and foxes	26
Conclusion	28
<i>Chapter 4</i> A human–animal studies approach to cats and dogs in ancient Egypt: evidence from mummies, iconography and epigraphy	31
MARINA FADUM & CARINA GRUBER	
Human–cat relationships in ancient Egypt: the cat as an animal mummy	31
Human–canine relationships in ancient Egypt: the dog as companion animal	33
Conclusion	34
Part II Animals in ritual and cult	
<i>Chapter 5</i> Encountered animals and embedded meaning: the ritual and roadside fauna of second millennium Anatolia	39
NEIL ERSKINE	
Deleuze, Guattari, and reconstructing ancient understanding	39
Landscape, religion, and putting meaning in place	40
Creatures, cult, and creating meaning	41
Folding animals in ritual	41
Bulls, boars, birds	42
Folding animals on the road	44
Human–animal interactions	46
Conclusion	49

<i>Chapter 6</i>	The dogs of the healing goddess Gula in the archaeological and textual record of ancient Mesopotamia	55
	SERAINA NETT	
	The dogs of Gula in Mesopotamian art	55
	The Isin dog cemetery	56
	The dogs of Gula in Ur III documentary sources	59
	Conclusion	60
<i>Chapter 7</i>	Between sacred and profane: human–animal relationships at Abu Tbeirah (southern Iraq) in the third millennium BC	63
	FRANCESCA ALHAIQUE, LICIA ROMANO & FRANCO D’AGOSTINO	
	Materials and methods	63
	Faunal assemblage from Area 1	63
	The faunal assemblage from Grave 100 Area 2	66
	Discussion on dog findings	68
	Discussion on equid findings	69
	Discussion on aquatic taxa	70
	General conclusions	72
Part III	Blurred lines: humans as animals, animals as humans	
<i>Chapter 8</i>	Dog-men, bear-men, and the others: men acting as animals in Hittite festival texts	79
	ALICE MOUTON	
	What did the animal-men look like?	79
	The social status of the animal-men	81
	The animal-men’s actions	83
	Men impersonating animals in rituals	87
	Conclusions	87
<i>Chapter 9</i>	The fox in ancient Mesopotamia: from physical characteristics to anthropomorphized literary figure	95
	SZILVIA SÖVEGJÁRTÓ	
	Descriptions of physical and behavioural characteristics of the fox	95
	The fox as anthropomorphized literary figure	97
	The fox in the animal world	97
	The fox and the divine sphere	99
	The character of the fox as a reflection of human nature	100
<i>Chapter 10</i>	Animal names in Semitic toponyms	103
	HEKMAT DIRBAS	
	Cuneiform sources	103
	Ugaritic	105
	Biblical Hebrew	105
	Arabic	106
	Concluding remarks	109
<i>Chapter 11</i>	The king as a fierce lion and a lion hunter: the ambivalent relationship between the king and the lion in Mesopotamia	113
	CHIKAKO E. WATANABE	
	The association between the king and the lion	113
	Royal lion hunt	115
	Symbolic mechanism	118

Part IV		Managing animals	
<i>Chapter 12</i>	An abstract Agent-Based Model (ABM) for herd movement in the Khabur Basin, the Jazira		125
	TUNA KALAYCI & JOHN WAINWRIGHT		
	Herd animals as geo-agents of landscape transformation		128
	Methodology		130
	Results		134
	Conclusions		135
<i>Chapter 13</i>	An ox by any other name: castration, control, and male cattle terminology in the Neo-Babylonian period		139
	MICHAEL KOZUH		
	Anthropology and terminology		139
	Cattle castration and Babylonian terminology		140
	An ox by any other name		141
	Terminology and ritual purity		142
<i>Chapter 14</i>	What was eating the harvest? Ancient Egyptian crop pests and their control		147
	MALWINA BRACHMAŃSKA		
	Ancient Egyptian crop pests		147
	Ancient Egyptian pest control		151
Part V		Animals in society and as a resource	
<i>Chapter 15</i>	Stews, ewes, and social cues: commoner diets at Neo-Assyrian Tušhan		161
	TINA L. GREENFIELD & TIMOTHY MATNEY		
	Background		161
	Textual sources of evidence for peasant household economy and diet		163
	Zooarchaeological data on commoner households from Tušhan		164
	Model building: assumptions about the status of food sources		166
	Datasets: faunal consumption and disposal patterns		167
	Body portions of domesticated sheep/goat (<i>Ovis/Capra</i>) and status		171
	The distribution of wild resources		172
	Discussion: elite and commoner diets		174
<i>Chapter 16</i>	A new look at eels and their use in Mesopotamian medicine		179
	TROELS PANK ARBØLL		
	<i>Kuppû</i> in cuneiform sources		179
	Medical uses of the <i>kuppû</i> -eel		180
	Identifying the <i>kuppû</i> -eel		182
	Conclusion		184
	Appendix 1: Editions of prescriptions utilizing the <i>kuppû</i> -eel		184
<i>Chapter 17</i>	Wild fauna in Upper Mesopotamia in the fourth and third millennia BC		193
	ANNE DEVILLERS		
	Introduction		193
	The iconographic corpus		193
	The archaeozoological record		199
	A hypothetical potential fauna constructed through predictive niche evaluation		200
	Conclusions		201
Part VI		Symbols of power: birds	
<i>Chapter 18</i>	Waterfowl imagery in the material culture of the late second millennium BC Southern Levant		207
	BEN GREET		
	The material		207
	Religious symbols		214
	Elite markers		216
	Conclusion		217

<i>Chapter 19</i>	Ducks, geese and swans: <i>Anatidae</i> in Mesopotamian iconography and texts	221
	LAURA BATTINI	
	Difficulties of the research	221
	<i>Anatidae</i> in the natural world	224
	<i>Anatidae</i> in the human world	226
	<i>Anatidae</i> in the divine world	228
	Conclusions	229
<i>Chapter 20</i>	Wild ostriches: a valuable animal in ancient Mesopotamia	235
	OLGA V. POPOVA & LOUISE QUILLIEN	
	Ostriches and royal ideology	236
	The use of the animal and its by-products at royal courts	241
	Conclusion	243
Part VII	Companions and working animals: equids and dogs	
<i>Chapter 21</i>	Face to face with working donkeys in Mesopotamia: insights from modern development studies	249
	JILL GOULDER	
	Donkey-mindedness	249
	Modern studies	250
	Breeding and supply	252
	Hiring and lending	253
	The role of person-to-person dissemination	254
	Short-distance transportation	254
	Transforming women's lives?	257
	And finally, ploughing	258
	Summing up	259
<i>Chapter 22</i>	Sacred and the profane: donkey burial and consumption at Early Bronze Tell eṣ-Şâfi/Gath	263
	HASKEL J. GREENFIELD, JON ROSS, TINA L. GREENFIELD & AREN M. MAEIR	
	Tell eṣ-Şâfi/Gath	263
	The Early Bronze occupation at Area E	264
	The sacred asses of Tell eṣ-Şâfi/Gath	267
	The profane asses of Tell eṣ-Şâfi/Gath	269
	Conclusions	274
<i>Chapter 23</i>	Dogs and equids in war in third millennium BC Mesopotamia	279
	CHRISTINA TSOUPAROPOULOU & LAERKE RECHT	
	Symmetrical relation: companionship	279
	Asymmetrical relation: dog eat equid	284
	Conclusion	287

CONTRIBUTORS

FRANCESCA ALHAIQUE

Servizio di Bioarcheologia, Museo delle Civiltà,
Piazza G. Marconi 14, 00144 Rome, Italy

Email: francesca.alhaique@beniculturali.it

TROELS PANK ARBØLL

Linacre College, University of Oxford, St Cross
Road, Oxford OX1 3JA

Email: troels.arboell@gmail.com

LAURA BATTINI

UMR 7192, CNRS-Collège de France, 52 rue du
Cardinal Lemoine, 75005 Paris, France

Email: laura.battini@college-de-france.fr

MALWINA BRACHMAŃSKA

Department of Archaeology, Adam Mickiewicz
University, Poznań, 61-614, Poland

Email: malwina.brachmanska@gmail.com

FRANCO D'AGOSTINO

Istituto Italiano di Studi Orientali, 'Sapienza'
Università di Roma, Circonvallazione Tiburtina, 4,
00185 Rome, Italy

Email: franco.dagostino@uniroma1.it

ANNE DEVILLERS

Royal Belgian Institute of Natural Sciences, Rue
Vautier 29, 1000 Brussels, Belgium

Email: as.devillers@gmail.com

HEKMAT DIRBAS

Ohio State University, 314 Hagerty Hall, 1775
College Rd, 43210 Columbus, OH, USA

Email: dirbas.hek@hotmail.com

NEIL ERSKINE

School of Humanities, University of Glasgow,
1 University Gardens, Glasgow G12 8QQ

Email: Neil.Erskine@glasgow.ac.uk

MARINA FADUM

Independent researcher

Email: fadum@gmx.at

JILL GOULDER

UCL Institute of Archaeology, 31–34 Gordon
Square, Bloomsbury, London WC1H 0PY

Email: j.goulder@alumni.ucl.ac.uk

HASKEL J. GREENFIELD

Near Eastern and Biblical Archaeology Laboratory,
St. Paul's College, University of Manitoba, 144-70

Dysart Road, Winnipeg, MB R3T 2M6, Canada

Email: haskel.greenfield@umanitoba.ca

TINA L. GREENFIELD

Department of Religion and Culture, St. Thomas
More College, University of Saskatchewan, 1437

College Dr, Saskatoon SK S7N 0W6, Canada

Email: tlgreenfield@gmail.com

BEN GREET

Department of Religious Studies, University
of Zurich, Kantonsschulstrasse 1, 8001 Zürich,
Switzerland

Email: benjamin.greet@gmail.com

CARINA GRUBER

Independent researcher

Email: carina.gruber1991@gmail.com

TUNA KALAYCI

Faculteit Archeologie, Leiden University,
Einsteinweg 2, 2333 CC Leiden, The Netherlands

Email: t.kalayci@arch.leidenuniv.nl

MICHAEL KOZUH

Department of History, Auburn University, 331
Thach Hall, Auburn, AL 36849-4360, USA

Email: mgk0001@auburn.edu

AREN M. MAEIR

The Institute of Archaeology, The Martin (Szusz)
Department of Land of Israel Studies and

Archaeology, Bar-Ilan University, Ramat-Gan
5290002, Israel

Email: arenmaeir@gmail.com

TIMOTHY MATNEY

Department of Anthropology, University of Akron,
Olin Hall 237, Akron, OH 44325-1910, USA

Email: matney@uakron.edu

ALICE MOUTON

UMR 8167, CNRS Paris, 27 rue Paul Bert, 94204 Ivry-
sur-Seine Cedex, France

Email: alice.mouton@cnrs.fr

SERAINA NETT

Department of Linguistics and Philology, Uppsala University, Engelska parken, Thunbergsvägen 3H, Sweden
Email: seraina.nett@lingfil.uu.se

OLGA V. POPOVA

Institute of Oriental Studies of the Russian Academy of Sciences, Rozhdestvenska st., 12, Moscow, Russian Federation
Email: olga.v.popova@gmail.com

LOUISE QUILLIEN

CNRS (Centre National de la Recherche Scientifique), ArScAn laboratory (Archéologies et Sciences de l'Antiquité), Nanterre, 92000, France
Email: louise.quillien@cnrs.fr

LAERKE RECHT

Department of Early Eastern Mediterranean Civilisation, Institut für Antike, University of Graz, Universitätsplatz 3/II, 8010 Graz, Austria
Email: laerke.recht@uni-graz.at

LICIA ROMANO

Istituto Italiano di Studi Orientali, 'Sapienza' Università di Roma, Circonvallazione Tiburtina, 4, 00185 Rome, Italy
Email: licia.romano@uniroma1.it

JON M. ROSS

Department of Anthropology, University of Manitoba, Winnipeg, MB R3T 2N2, Canada
Email: rossj313@myumanitoba.ca

SZILVIA SÖVEGJÁRTÓ

University of Hamburg, Hauptstrasse 67, 69214 Eppelheim, Germany
Email: ssoveg@gmail.com

CHRISTINA TSOUPAROPOULOU

Institute of Mediterranean and Oriental Cultures, Polish Academy of Sciences, 72 Nowy Świat St., 00-330 Warsaw, Poland & McDonald Institute for Archaeological Research, University of Cambridge, Downing Street, Cambridge CB2 3ER
Email: ct272@cam.ac.uk

LORENZO VERDERAME

Istituto Italiano di Studi Orientali, 'Sapienza' Università di Roma, Circonvallazione Tiburtina, 4, 00185 Rome, Italy
Email: lorenzo.verderame@uniroma1.it

ANDRÉA VILELA

Laboratoire Archéorient, Maison de l'Orient et de la Méditerranée, 7 rue Raulin, F-69365 Lyon cedex 07, France
Email: andrea.vilela@univ-lyon2.fr

JOHN WAINWRIGHT

Department of Geography, Durham University, Lower Mountjoy, South Road, Durham DH1 3LE, UK
Email: john.wainwright@durham.ac.uk

CHIKAKO E. WATANABE

Faculty of International Studies, Osaka Gakuin University, 2-36-1 Kishibe-Minami, Suita-shi, Osaka 564-8511 Japan
Email: chikako@ogu.ac.jp

Figures

1.1	<i>Fat-tailed sheep at the site of Niğde-Kınık Höyük, Niğde Province, Turkey.</i>	2
1.2	<i>Carved ivory lion (probably furniture element) from Nimrud, 9th–8th centuries BC.</i>	5
1.3	<i>Two faience jerboa figurines, Egypt, possibly from the Memphite Region (c. 1850–1640 BC).</i>	6
1.4	<i>Ivory blinker carved with a sphinx. From Nimrud, 8th century BC.</i>	7
1.5	<i>Ostrich eggshell converted to vessel. From Ur, Mesopotamia, Early Dynastic III (c. 2550–2400 BC).</i>	8
5.1	<i>Animal-shaped vessels from Kültepe.</i>	42
5.2	<i>Bull- and boar-vessels from Kültepe.</i>	43
5.3	<i>Eagle-shaped vessel from Kültepe.</i>	43
5.4	<i>Animal vessels rhizome.</i>	44
5.5	<i>Hypothesized early second millennium Assyrian trade networks.</i>	45
5.6	<i>Hypothesized early second millennium routes between Kültepe and the Lower Euphrates.</i>	45
5.7	<i>Likely animal presence within the corridor of hypothesized routes.</i>	47
5.8	<i>Landscape rhizome.</i>	48
6.1	<i>Middle Babylonian kudurru showing the dog as a symbol for the goddess Gula.</i>	56
6.2	<i>Neo-Assyrian cylinder seal: Gula seated on a throne with a dog at her feet.</i>	57
6.3	<i>Impression of a Late Babylonian stamp seal: Gula seated on her throne with a dog at her feet.</i>	57
6.4	<i>The overall height distribution of the dog skeletons from the Isin dog cemetery.</i>	58
6.5	<i>The mastiffs of Ashurbanipal. Relief from the North Palace in Nineveh.</i>	59
7.1	<i>Plan of the site with excavation areas and canals.</i>	64
7.2	<i>Plan of Area 1 Cemetery and latest activities.</i>	65
7.3	<i>Plan of Area 1 Building A with location of sub-pavement graves.</i>	66
7.4	<i>Plan of Area 2 with location of Grave 100, the equid burial, the dog burial, and other graves.</i>	67
7.5	<i>Dog burial in Room 22 – Building A (Area 1).</i>	68
7.6	<i>Equid burial in Area 2.</i>	70
7.7	<i>Fish specimens.</i>	71
11.1	<i>Metaphor explained by the ‘primary’ and ‘secondary’ subjects.</i>	114
11.2	<i>Lion with flashing eyes.</i>	114
11.3	<i>Lion-hunt stele from Uruk, Eanna III.</i>	115
11.4	<i>Lion-hunt relief of Ashurnasirpal II, from Room B, Northwest Palace, Nimrud, c. 865 BC.</i>	115
11.5	<i>Narrative scheme of the lion-hunt reliefs of Ashurbanipal in Room C, North Palace at Nineveh.</i>	116
11.6	<i>Drawing of relief representing the god Ninurta pursuing Anzû, entrance to the Ninurta Temple, Nimrud.</i>	117
11.7	<i>Clay sealing bearing the stamp of the Assyrian royal seal, Nineveh, 715 BC.</i>	118
11.8	<i>Assyrian royal seal.</i>	119
12.1	<i>Upper Mesopotamia and the Khabur Basin.</i>	126
12.2	<i>The Khabur Basin with a dense network of hollow ways, location of Tell Brak marked.</i>	128
12.3	<i>A CORONA historical satellite image preserves details of the radial route system around Tell Brak.</i>	129
12.4	<i>Variable herd movement strategies differentially alter landscapes.</i>	129
12.5	<i>Hollow ways visible on the TanDEM-X Digital Elevation Model.</i>	132
12.6	<i>Variations in profiles may indicate differential traffic, hydrological systems, and/or preservation conditions.</i>	132
12.7	<i>TanDEM-X DEM around Tell Brak; the DEM after Gaussian Filtering and Sink Filling.</i>	133
12.8	<i>The ABM gives herd animals an equal chance of picking any given hollow way.</i>	133
12.9	<i>The results of the ABM from four main scenarios.</i>	135
12.10	<i>Close-up views of one of the hollow ways around Tell Brak.</i>	136
14.1	<i>Capturing common quails, Tomb of Mereruka, Saqqara, VI dynasty.</i>	151
14.2	<i>Ostrakon from Deir el-Medina, Ramesside period.</i>	153
14.3	<i>Mouse trap, el-Lahun, XII dynasty.</i>	154
15.1	<i>Location of Ziyaret Tepe.</i>	162
15.2	<i>Topographic plan of Ziyaret Tepe.</i>	162
15.3	<i>Photograph of the obverse of cuneiform text ZTT14, docket for receipt of grain by bakers.</i>	163
15.4	<i>Plan of the Late Assyrian architectural remains from Operation K, later level of occupation.</i>	165
15.5	<i>Histograms of relative percentage frequencies of wild taxa.</i>	168
15.6	<i>Relative frequencies of domestic and wild taxa from individual buildings.</i>	169

15.7	<i>Stacked histogram of the combined domestic taxonomic frequencies for each Operation.</i>	170
15.8	<i>Stacked bar graph of portions for Ovis/Capra by building.</i>	171
15.9	<i>Relative percentage frequencies of wild taxa within corrected wild populations of each building.</i>	173
15.10	<i>Stacked histogram of percentage frequencies of good, bad, and ugly wild species within each Operation.</i>	174
16.1	<i>A Mesopotamian spiny eel.</i>	182
16.2	<i>Neo-Assyrian relief displaying an eel.</i>	183
17.1	<i>Sites of provenance of the iconographic material and regional clusters.</i>	194
17.2	<i>Localization of the sites in relation to potential vegetation zones.</i>	195
17.3	<i>Wild ungulates appearing most frequently in early Near Eastern glyptic.</i>	196
17.4	<i>Relative frequency of wild ungulates representations by region.</i>	197
17.5	<i>Number of lion representations in each region.</i>	198
17.6	<i>Absolute number of representations of carnivores other than the lion.</i>	199
17.7	<i>Historic range of the cheetah.</i>	201
18.1	<i>Scarab/Plaque No. 8. Enstatite scarab seal from Hebron.</i>	210
18.2	<i>Waterfowl-shaped scaraboid No. 7. Found at Gezer.</i>	210
18.3	<i>Painted ceramic duck head found at Beth Shean.</i>	211
18.4	<i>Three waterfowl-shaped ceramic bowls atop perforated cylindrical stands found at Tell Qasile.</i>	212
18.5	<i>Ivory cosmetic box in the form of a waterfowl found at Megiddo.</i>	213
18.6	<i>Drawings of two of the ivory panels found at Megiddo.</i>	214
18.7	<i>Ivory panels found at Tell el-Far'a (South).</i>	215
19.1	<i>Modern birds.</i>	222
19.2	<i>Different breeds of birds represented on different media.</i>	223
19.3	<i>A miniature chair representing geese in natural 'milieu'. Old Babylonian period, from Diqdiqqah.</i>	225
19.4	<i>Cylinder seals with geese.</i>	226
19.5	<i>Toys in the shape of a goose.</i>	227
19.6	<i>Personal ornaments from Ur.</i>	227
19.7	<i>Culinary text.</i>	228
19.8	<i>The Goose Goddess.</i>	229
19.9	<i>Incised and painted vase from Larsa.</i>	230
20.1	<i>Modern impression of a cylinder seal, Tello, Early Dynastic period.</i>	236
20.2	<i>Modern impression of a cylinder seal, Mesopotamia, Middle Assyrian period.</i>	237
20.3	<i>Cylinder seal and its modern impression, Mesopotamia, Neo-Assyrian period.</i>	238
20.4	<i>Cylinder seal and its modern impression, Mesopotamia, Middle Assyrian period.</i>	239
20.5	<i>Cylinder seal and its modern impression, Mesopotamia, Neo-Babylonian period, 1000–539 BC.</i>	239
20.6	<i>Cylinder seal, Northern Mesopotamia, c. 1600–1000 BC.</i>	240
21.1	<i>Interviewing farmers in western Ethiopia.</i>	251
21.2	<i>Thrice-weekly donkey market in western Ethiopia.</i>	253
21.3	<i>Carrying bricks in India.</i>	255
21.4	<i>Donkeys with 100 kg grain-sacks at Yehil Berenda market, Addis Ababa.</i>	256
21.5	<i>Kenyan woman with seven children carrying food home from market.</i>	257
21.6	<i>Woman ploughing with a donkey in central Burkina Faso.</i>	258
22.1	<i>Map showing location of Tell eṣ-Şâfi/Gath.</i>	264
22.2	<i>Map of Tell eṣ-Şâfi/Gath archaeological site with the location of the various excavation areas.</i>	265
22.3	<i>Plan of the E5c Stratum, Area E, Tell eṣ-Şâfi/Gath, with location of donkey burial pits.</i>	266
22.4	<i>Photograph of sacrificial donkey.</i>	267
22.5	<i>Photographs of the three donkey burials beneath Building 17E82D09.</i>	268
22.6	<i>Histogram of Equus asinus osteological element frequency.</i>	272
22.7	<i>Plantar face of Equus asinus third phalange bone with butchery slicing marks.</i>	272
22.8	<i>SEM photograph of butchery slicing marks on the donkey (Equus asinus) first phalange.</i>	273
23.1	<i>Detail of the War side of the Standard of Ur.</i>	280
23.2	<i>Clay door peg sealing.</i>	280
23.3	<i>Digital reproduction of cylinder seal VA 2952.</i>	281
23.4	<i>Seal impression from Tell Mozan.</i>	282
23.5	<i>Sites with equid, dog and equid-dog depositions in the third millennium BC.</i>	282

23.6	<i>Tell Madhhur Tomb 5G plan.</i>	283
23.7	<i>Tell Brak Area FS 'Caravanserai', Akkadian period, Level 5.</i>	284
23.8	<i>Sargon stele.</i>	285

Tables

5.1	<i>Anatolian Middle Bronze Age chronology.</i>	41
7.1	<i>Faunal remains from relevant contexts in Abu Tbeirah.</i>	67
8.1	<i>Chart summarizing the textual data about these characters interacting with animal-men.</i>	83
8.2	<i>Chart summarizing the textual data presented in the chapter.</i>	88
15.1	<i>Model of expectations for typical patterns of faunal distributions within elite and commoner residences.</i>	166
15.2	<i>Utility index of combined body portions and associated element categories.</i>	167
15.3	<i>Relative percentage frequencies of wild taxa.</i>	168
15.4	<i>Relative percentage frequency of domestic versus wild taxa, buildings A/N, G, K, M and U.</i>	169
15.5	<i>Relative frequency distributions for domestic taxa.</i>	170
15.6	<i>Percentage frequencies of body portion categories of good, bad, and ugly for Ovis/Capra.</i>	171
15.7	<i>Relative frequency distributions for wild taxa in commoner buildings and elite buildings.</i>	173
17.1	<i>Predicted presence of large mammals in the different vegetation belts.</i>	200
18.1	<i>Scarabs and plaques with waterfowl iconography.</i>	208
18.2	<i>Waterfowl-shaped scaraboids.</i>	211
18.3	<i>Fragmentary ceramic waterfowl heads.</i>	212
18.4	<i>Waterfowl-shaped ivory cosmetic boxes.</i>	213
22.1	<i>Frequency distribution of non-articulated Equus asinus bone elements.</i>	270
22.2	<i>Frequency distribution of non-articulated Equus asinus bone elements by age groups.</i>	271
22.3	<i>Frequency (NISP) of Stratum E5c Equus asinus osteological elements by depositional context.</i>	271
23.1	<i>Calculation of meat weight.</i>	287

Abbreviations and sigla

ABL	Harper, R.F., 1892–1914. <i>Assyrian and Babylonian Letters Belonging to the Kouyunjik Collection of the British Museum</i> , 14 volumes. Chicago: University of Chicago Press.	ARM 30	Durand, J.-M., 2009. <i>La nomenclature des habits et des textiles dans les textes de Mari</i> . (Archives royales de Mari 30.) Paris: Lib. Paul Geuthner.
AHw	von Soden, W., 1959-1981. <i>Akkadisches Handwörterbuch</i> . Wiesbaden.	AUCT 1	Sigrist, M., 1984. <i>Neo-Sumerian Account Texts in the Horn Archaeological Museum</i> . (Andrews University Cuneiform Texts 1.) Berrien Springs: Andrews University Press.
AKA I	Wallis Budge, E.A. & L.W. King, 1902. <i>Annals of the Kings of Assyria: The Cuneiform Texts with Translations and Transliterations from the Original Documents in the British Museum</i> . Vol. I. London: The Trustees of the British Museum.	BabMed	Babylonian Medicine online [no year]: ‘Corpora’, https://www.geschkult.fu-berlin.de/e/babmed/Corpora/index.html
AMT	Campbell Thompson, R., 1923. <i>Assyrian Medical Texts</i> . Milford, Oxford: Oxford University Press.	BAM	Köcher, F., 1963–1980. <i>Die babylonisch-assyrische Medizin in Texten und Untersuchungen</i> , 6 Vols. Berlin: De Gruyter.
AnOr 8	Pohl, A., 1933. <i>Neubabylonische Rechtsurkunden aus den Berliner staatlichen Museen</i> . (Analecta Orientalia 8.) Rome: Pontificium Institutum Biblicum.	BCT 1	Watson, P.J., 1986. <i>Neo-Sumerian Texts from Drehem</i> . (Catalogue of Cuneiform Tablets in Birmingham City Museum I.) Warminster: Aris & Phillips.
AO	Siglum of objects in the Louvre Museum, Paris (Archéologie Orientale).	BIN 1	Keiser, C.E., 1917. <i>Letters and Contracts from Erech Written in the Neo-Babylonian Period</i> . (Babylonian Inscriptions in the Collection of James B. Nies, vol. 1.) New Haven: Yale University Press.
ARM 2	Jean, Ch.-F., 1950. <i>Lettres diverses</i> . (Archives royales de Mari 2.) Paris: Lib. Paul Geuthner.	BIN 3	Keiser, C.E., 1971. <i>Neo-Sumerian Account Texts from Drehem</i> . (Babylonian Inscriptions in the Collection of B.J. Nies, vol. 3.) New Haven: Yale University Press.
ARM 9	Biro, M., 1958. <i>Textes administratifs de la Salle 5 du Palais</i> . (Archives royales de Mari 9.) Paris: Lib. Paul Geuthner.	BM	Siglum for objects in the British Museum, London.
ARM 10	Dossin, G., 1978. <i>Correspondance feminine</i> . (Archives royales de Mari 10.) Paris: Lib. Paul Geuthner.	BPOA	Biblioteca del Próximo Oriente Antiguo (Madrid: Consejo Superior de Investigaciones Científicas, 2006ff.)
ARM 14	Biro, M., 1974. <i>Lettres de Yaqqim-Addu, gouverneur de Sagarâtum</i> . (Archives royales de Mari 14.) Paris: Lib. Paul Geuthner.	BPOA 6	Sigrist, M., & T. Ozaki, 2009a. <i>Neo-Sumerian Administrative Tablets from the Yale Babylonian Collection. Part One</i> (Biblioteca del Próximo Oriente Antiguo 6.) Madrid: Consejo Superior de Investigaciones Científicas.
ARM 15	Bottero, J. & A. Finet, 1954. <i>Repertoire analytique des tomes I à V</i> . (Archives royales de Mari 15.) Paris: Lib. Paul Geuthner.	BPOA 7	Sigrist, M., & T. Ozaki, 2009b. <i>Neo-Sumerian Administrative Tablets from the Yale Babylonian Collection. Part Two</i> (Biblioteca del Próximo Oriente Antiguo 7.) Madrid: Consejo Superior de Investigaciones Científicas.
ARM 26	Durand, J.-M. et al., 1988. <i>Archives épistolaires de Mari</i> . (Archives royales de Mari 26.) Paris: Lib. Paul Geuthner.	BRM 1	Clay, A.T., 1912. <i>Babylonian Business Transactions of the First Millennium B.C.</i> (Babylonian Records
ARM 27	Biro, M., 1993. <i>Correspondance des gouverneurs de Qaṭṭunân</i> . (Archives royales de Mari 27.) Paris: Lib. Paul Geuthner.		
ARM 28	Kupper, J.-R., 1998. <i>Lettres royales du temps de Zimri-Lim</i> . (Archives royales de Mari 28.) Paris: Lib. Paul Geuthner.		

Abbreviations and sigla

	in the Library of J. Pierpont Morgan, Part 1.) New York: Privately printed.	HSS 14	Lacheman, E.R., 1950. <i>Excavations at Nuzi V. Miscellaneous Texts from Nuzi, Part 2, The Palace and Temple Archives.</i> (Harvard Semitic Studies 14.) Cambridge (Mass.): Harvard Univ. Press.
CAD	<i>The Assyrian Dictionary of the Oriental Institute of the University of Chicago.</i> Chicago: The Oriental Institute, 1956–2010.	HW ²	Friedrich, J. & A. Kammerhuber (eds.), 1975–. <i>Hethitisches Wörterbuch. Zweite, völlig neubearbeitete Auflage auf der Grundlage der edierten hethitischen Texte.</i> Heidelberg: Winter.
CBS	Siglum for objects in the University Museum in Philadelphia (Catalogue of the Babylonian Section).	IB	Siglum for finds from Isin (Isan Bahriyat).
CDLI	Cuneiform Digital Library Initiative, https://cdli.ucla.edu	IM	Siglum for objects in the Iraq Museum, Baghdad.
CHD	Goedegebuure, P.M., H.G. Güterbock, H.A. Hoffner & T.P.J. van den Hout (eds.), 1980–. <i>The Hittite Dictionary of the Oriental Institute of the University of Chicago.</i> Chicago: The Oriental Institute.	ITT 5	de Genouillac, H., 1921. <i>Inventaire des Tablettes de Tello conservées au Musée Imperial Ottoman. Tome V. Époque présargonique, Époque d'Agadé, Époque d'Ur III.</i> Paris: Édition Ernest Leroux.
CM 26	Sharlach, T.M., 2004. <i>Provincial Taxation and the Ur III State.</i> (Cuneiform Monographs 26.) Leiden: Brill.	KAH 2	Schroeder, O. 1922. <i>Keilschrifttexte aus Assur historischen Inhalts, Heft II.</i> (Wissenschaftliche Veröffentlichungen der Deutschen Orient-Gesellschaft 37.) Leipzig: J.C. Hinrichs'sche Buchhandlung.
CT 22	Campbell Thompson, R., 1906. <i>Cuneiform Texts from Babylonian Tablets in British Museum</i> , vol. 22. London: British Museum.	KBo	<i>Keilschrifttexte aus Boghazköi</i> (Bd. 1-22 in Wissenschaftliche Veröffentlichungen der Deutschen Orient-Gesellschaft) Leipzig/Berlin, 1916 ff.
CT 32	King, L.W., 1912. <i>Cuneiform Texts from Babylonian Tablets in British Museum</i> , vol. 32. London: British Museum.	KRI	Kitchen, K.A., 1969–1990. <i>Ramesseide Inscriptions. Historical and Biographical</i> , 8 vols. Oxford: Blackwell.
CT 55	Pinches, T.G. 1982. <i>Cuneiform Texts from Babylonian Tablets in the British Museum Part 55. Neo-Babylonian and Achaemenid Economic Texts.</i> London: British Museum Publications.	KUB	<i>Keilschrifturkunden aus Boghazköi</i> , Berlin 1921 ff.
CTH	Laroche, E. 1971. <i>Catalogue des Textes Hittites.</i> Paris: Klincksieck.	LAPO 16	Durand, J.-M., 1997. <i>Les Documents épistolaires du palais de Mari, tome I.</i> (Littératures anciennes du Proche-Orient 16.) Paris: Éditions du cerf.
DAS	Lafont, B., 1985. <i>Documents Administratifs Sumériens, provenant du site de Tello et conservés au Musée du Louvre.</i> Paris: Editions Recherche sur les Civilisations.	LAPO 18	Durand, J.-M., 2000. <i>Les Documents épistolaires du palais de Mari, tome III.</i> (Littératures anciennes du Proche-Orient 18.) Paris: Éditions du cerf.
DMMA	Siglum for objects in the Département des Monnaies, médailles et antiques de la Bibliothèque nationale de France.	LD	Lepsius, C.R., 1849–59. <i>Denkmäler aus Aegypten und Aethiopen</i> (plates), 6 vols. Berlin: Nicolaische Buchhandlung.
DUL	Del Olmo Lete, G. & J. Sanmartín, 2015. <i>A Dictionary of the Ugaritic Language in the Alphabetic Tradition.</i> Translated and edited by W.G.E. Watson. Third revised edition. 2 vols. (Handbuch der Orientalistik 112.) Leiden: Brill.	LKU	Falkenstein, A., 1931. <i>Literarische Keilschrifttexte aus Uruk.</i> Berlin: Berlin Staatliche Museen zu Berlin Vorderasiatische Abteilung.
EA	Siglum for the Tell El-Amarna Letters, following the edition of Knudtzon, J. A., 1915. <i>Die El-Amarna-Tafeln.</i> Leipzig: J.C. Hinrichs'sche Buchhandlung.	M	Siglum for texts from Mari.
ePSD	Electronic version of <i>The Pennsylvania Sumerian Dictionary</i> , http://psd.museum.upenn.edu	Moore, Mich. Coll.	Moore, E., 1939. <i>Neo-Babylonian Documents in the University of Michigan Collection.</i> Ann Arbor: University of Michigan Press.
ETCSL	Black, J.A., G. Cunningham, J. Ebeling, E. Flückiger-Hawker, E. Robson, J. Taylor & G. Zólyomi (eds.), 1998–2006. <i>The Electronic Text Corpus of Sumerian Literature.</i> Oxford, http://etcsl.orinst.ox.ac.uk/	MSL VIII/I	Landsberger, B., 1960. <i>The Fauna of Ancient Mesopotamia. First Part: Tablet XIII.</i> (Materialien zum Sumerischen Lexikon VIII/1.) Rome: Pontificium Institutum Biblicum. [with the assistance of A. Draffkorn Kilmer & E.I. Gordon].
FM 2	Charpin, D. & J.-M. Durand (ed.), 1994. <i>Recueil d'études à la mémoire de Maurice Birot.</i> (Florilegium Marianum II.) Paris: Société pour l'étude du Proche-Orient ancien.	MVN 8	Calvot, D., G. Pettinato, S.A. Picchioni & F. Reschid, 1979. <i>Textes économiques du Selluš-Dagan du Musée du Louvre et du Collège de France (D. Calvot). Testi economici dell'Iraq Museum Baghdad.</i> (Materiali per il Vocabolario Neosumerico 8.) Rome: Multigrafica Editrice.
Hh	<i>The Series HAR-ra='hubullu'</i> , Materials for the Sumerian lexicon (MSL), 5, 6, 7, 9, 10 & 11. Rome: Pontificium Institutum Biblicum, 1957–.	MVN 11	Owen, D.I., 1982. <i>Selected Ur III Texts from the Harvard Semitic Museum.</i> (Materiali per il Vocabolario Neosumerico 11.) Rome: Multigrafica Editrice.
		MZ	Siglum for finds from Tell Mozan.
		NBC	Siglum for tablets in the Nies Babylonian Collection of the Yale Babylonian Collection.

Abbreviations and sigla

NCBT	Siglum for tablets in the Newell Collection of Babylonian Tablets, now Yale University, New Haven.	SAA 11	Fales, F.M. & J.N. Postgate, 1995. <i>Imperial Administrative Records, Part II: Provincial and Military Administration</i> . (State Archives of Assyria 11.) Helsinki: Helsinki University Press.
OIP 99	Biggs, R.D., 1974. <i>Inscriptions from Tell Abu Salabikh</i> . (Oriental Institute Publications 99.) Chicago: The University of Chicago Press.	SAA 12	Kataja, K. & R. Whiting, 1995. <i>Grants, Decrees and Gifts of the Neo-Assyrian Period</i> . (State Archives of Assyria 12.) Helsinki: Helsinki University Press.
OIP 115	Hilgert, M., 1998. <i>Cuneiform Texts from the Ur III Period in the Oriental Institute, Vol. 1: Drehem Administrative Documents from the Reign of Šulgi</i> . (Oriental Institute Publications 115.) Chicago: The Oriental Institute.	SAA 13	Cole, S.W. & P. Machinist, 1998. <i>Letters from Assyrian and Babylonian Priests to Kings Esarhaddon and Assurbanipal</i> . (State Archives of Assyria 13.) Helsinki: Helsinki University Press.
OIP 121	Hilgert, M., 1998. <i>Cuneiform Texts from the Ur III Period in the Oriental Institute, Volume 2: Drehem Administrative Documents from the Reign of Amar-Suena</i> . (Oriental Institute Publications 121.) Chicago: The Oriental Institute.	SAA 17	Dietrich, M., 2003. <i>The Neo-Babylonian Correspondence of Sargon and Sennacherib</i> . (State Archives of Assyria 17.) Helsinki: Helsinki University Press.
P	CDLI (Cuneiform Digital Library Initiative) number.	SAA 19	Luukko, M. 2012. <i>The Correspondence of Tiglathpileser III and Sargon II</i> . (State Archives of Assyria 19.) Helsinki: The Neo-Assyrian Text Corpus Project.
PDT 1	Çig, M., H. Kizilyay & A. Salonen, 1956. <i>Die Puzris-Dagan-Texte der Istanbul Archäologischen Museen Teil 1: Texts Nrr. 1-725</i> . (Academia Scientiarum Fennica Annales, série B, tome 92.) Helsinki: Academia Scientiarum Fennica.	SAA 20	Parpola, S. 2017. <i>Assyrian Royal Rituals and Cultic Texts</i> . (State Archives of Assyria 20.) Helsinki: The Neo-Assyrian Text Corpus Project.
PKG 18	Orthmann, W., 1985. <i>Der alte Orient</i> . (Propyläen Kunstgeschichte 18.) Berlin: Propyläen Verlag.	SAT 2	Sigrist, M., 2000. <i>Sumerian Archival Texts. Texts from the Yale Babylonian Collection 2</i> . Bethesda: CDL Press.
PTS	Siglum for unpublished texts in the Princeton Theological Seminary.	SF	Deimel, A., 1923. <i>Schultexte aus Fara</i> . (Wissenschaftliche Veröffentlichung der Deutschen Orientgesellschaft 43.) Leipzig: J.C. Hinrichs'sche Buchhandlung.
RGTC	<i>Répertoire géographique des textes cunéiformes</i> . (Beihefte zum Tübinger Atlas des Vorderen Orients, Reihe B.) Wiesbaden: Reichert, 1974–.	SP	Alster, B., 1997. <i>Proverbs of Ancient Sumer</i> . Bethesda: CDL Press.
RIMA 2	Grayson, A.K., 1991. <i>Assyrian Rulers of the Early First Millennium BC I (1114–859 BC)</i> . (The Royal Inscriptions of Mesopotamia, Assyrian Periods Vol. 2.) Toronto, Buffalo & London: University of Toronto Press.	TCL 12	Conteneau, G., 1927. <i>Contrats Néo-Babyloniens I, de Téglaḫ-Phalasar III à Nabonide</i> . (Textes cunéiformes, Musées du Louvre 12.) Paris: P. Geuthner.
RIME 1	Frayne, D., 2008. <i>Presargonic Period (2700–2350 BC)</i> . (The Royal Inscriptions of Mesopotamia, Early Periods Vol. 1.) Toronto: University of Toronto Press.	TCL 13	Contenau, G., 1929. <i>Contrats néo-babyloniens II. Achéménides et Séleucides</i> . (Textes cunéiformes, Musées du Louvre 13.) Paris: P. Geuthner.
RIME 4	Frayne, D., 1990. <i>Old Babylonian Period (2003–1595 BC)</i> . (The Royal Inscriptions of Mesopotamia, Early Periods Vol. 4.) Toronto: University of Toronto Press.	TRU	Legrain, L., 1912. <i>Le temps des rois d'Ur: recherches sur la société antique d'après des textes nouveaux</i> . (Bibliothèque de l'École des Hautes Études 199.) Paris: H. Champion.
RINAP	The Royal Inscriptions of the Neo-Assyrian Period; Open Richly Annotated Cuneiform Corpus, available at http://oracc.museum.upenn.edu/rinap/index.html	TU	Thureau-Dangin, F., 1922. <i>Tablettes d'Uruk à l'usage des prêtres du Temple d'Anu au temps des Séleucides</i> . (Musée du Louvre. Département des antiquités orientales. Textes cunéiformes.) Paris: P. Geuthner.
RLA	<i>Reallexikon der Assyriologie und vorderasiatischen Archäologie</i> .	U.	Siglum for finds from Ur.
RS	Siglum for documents from Ras Shamra (Ugarit).	UCP 9/1,I	Lutz, H.F., 1927. <i>Neo-Babylonian Administrative Documents from Erech: Part I</i> . (University of California Publications in Semitic Philology Vol. 9 no. 1/I.) Berkeley (CA): University of California Press.
SAA 2	Parpola, S. & K. Watanabe, 1988. <i>Neo-Assyrian Treaties and Loyalty Oaths</i> . (State Archives of Assyria 2.) Helsinki: Helsinki University Press.	UCP 9/1,II	Lutz, H.F., 1927. <i>Neo-Babylonian Administrative Documents from Erech: Part II</i> . (University of California Publications in Semitic Philology Vol. 9 no. 1/II.) Berkeley (CA): University of California Press.
SAA 7	Fales, F.M. & J.N. Postgate, 1992. <i>Imperial Administrative Records, Part I: Palace and Temple Administration</i> . (State Archives of Assyria 7.) Helsinki: Helsinki University Press.	UDT	Nies, J.B., 1920. <i>Ur Dynasty Tablets: Texts Chiefly from Tello and Drehem Written during the Reigns of Dungi, Bur-Sin, Gimil-Sin and Ibi-Sin</i> . Leipzig: J.C. Hinrichs'sche Buchhandlung.
SAA 10	Parpola, S. 1993. <i>Letters from Assyrian and Babylonian Scholars</i> . (State Archives of Assyria 10.) Helsinki: Helsinki University Press.		

Abbreviations and sigla

VA	Siglum for objects in the Vorderasiatisches Museum, Berlin (Vorderasiatische Abteilung).		<i>et d'Histoire in Genf</i> . Naples: Istituto orientale di Napoli.
VAT	Siglum for objects/tablets in the Vorderasiatisches Museum, Berlin (Vorderasiatische Abteilung. Tontafeln).	YBC	Siglum for tablets in the Yale Babylonian Collection.
VS 1	Ungnad, A. & L. Messerschmidt, 1907. <i>Vorderasiatische Schriftdenkmäler der Königlichen Museen zu Berlin</i> . Vol. 1, Texts 1–115, Königliche Museen zu Berlin. Sammlung der Vorderasiatischen Altertümer. Leipzig: J.C. Hinrichs'sche Buchhandlung.	YOS 7	Tremayne, A., 1925. <i>Records from Erech, Time of Cyrus and Cambyses (538-521 B.C.)</i> . (Yale Oriental Series, Babylonian Texts, vol. 7.) New Haven: Yale University Press.
VS 16	Schröder, O., 1917. <i>Altbabylonische Briefe</i> . (Vorderasiatische Schriftdenkmäler der königlichen Museen zu Berlin 16.) Leipzig: J.C. Hinrichs'sche Buchhandlung.	YOS 8	Faust, D.E., 1941. <i>Contracts from Larsa, dated in the Reign of Rim-Sin</i> . (Yale Oriental Series, Babylonian Texts, vol. 8.) New Haven: Yale University Press & London: H. Milford, Oxford University Press.
VS 17	van Dijk, J. 1971. <i>Nicht-kanonische Beschwörungen und sonstige literarische Texte</i> . (Vorderasiatische Schriftdenkmäler der Königlichen Museen zu Berlin 17.) Berlin: Akademie Verlag.	YOS 11	van Dijk, J., A. Goetze & M.I. Hussey, 1985. <i>Early Mesopotamian Incantations and Rituals</i> . (Yale Oriental Series, Babylonian Texts, vol. 11.) New Haven: Yale University Press.
WB	Erman, A. & H. Grapow (eds.), 1971. <i>Wörterbuch der ägyptischen Sprache</i> , 5 vols. Berlin: Akademie Verlag.	YOS 17	Weisberg, D.B., 1980. <i>Texts from the Time of Nebuchadnezzar</i> . (Yale Oriental Series, Babylonian Texts, vol. 17.) New Haven: Yale University Press.
WMAH	Sauren, H., 1969. <i>Wirtschaftsurkunden aus der Zeit der III. Dynastie von Ur im Besitz des Musée d'Art</i>	YOS 19	Beaulieu, P.-A., 2000. <i>Legal and Administrative Texts from the Reign of Nabonidus</i> . (Yale Oriental Series, Babylonian Texts, vol. 19.) New Haven: Yale University Press.

Preface

Augusta McMahon

The chapters in this volume invert traditional approaches to past human-animal relationships, placing animals at the forefront of these interactions and celebrating the many ways in which animals enriched or complicated the lives of the inhabitants of the ancient Near East. The authors embrace insights from text, archaeology, art and landscape studies. The volume offers rich evidence for the concept that ‘animals are good to think’ (Levi-Strauss 1963), enabling humans in categorizing the world around us, evaluating our own behaviours, and providing analogies for supernatural powers that are beyond humans’ control. However, totemism has never fit the ancient Near East well, because most animals had varied and endlessly complicated relationships with their human associates, as these chapters vividly describe. Taboos on eating or handling animals ebbed and flowed, and the same animal could have both positive and negative associations in omen texts. Animals were good (or bad) to eat, good (or bad) to think, good (or bad) to live with (Kirksey & Helmreich 2010) and good (or bad) to be. Through detailed, theoretically informed and well-supported case studies, this volume moves the study of human-animal-environment interactions forward, presenting animals as embedded actors in culture rather than simply objectified as human resources or symbols.

The chapters in the first section emphasize the agency of animals via their abilities to resolve crises for humans and deities and to shift between animal and human worlds. Animals have paradoxical affects: as metaphors for wilderness and chaos, or as valued companions, helpers, or votive sacrifices. The variety of interactions and assumptions cautions us to treat animals, as we do humans, as individuals. Reconstruction of animals in past rituals has a long history, usually focused on animals associated with the gods and/or animals used in formal religious sacrifice. But the chapters in the second section also examine

the impact of lesser-known animals and less formal encounters, e.g., in the landscape or in funeral contexts within the home. The value and meanings of animals could vary with context.

The fascination engendered by hybrid or composite figures is also well represented. The persistence of composite figures in the Near East, from fourth millennium BC human-ibex ‘shamans’ on northern Mesopotamian Late Chalcolithic seals to *lamassu* and *mušhuššu* of the first millennium BC, suggests that the division and recombination of animal body elements fulfilled a human need to categorize powerful forces and create a cosmological structure. The anthropomorphizing of animals is another facet of the flexibility of animal identifications in the past. The authors here also grapple with the question of whether composite images represent ideas or costumed ritual participants.

The chapters also cover the most basic of animal-human relations, that of herd management, use in labour, and consumption, digging deeply into details of mobility, breeding and emic classifications. Economic aspects of the human-animal relationship are currently being rejuvenated through archaeological science techniques (e.g., isotopes, ZooMS), which give us unparalleled levels of detail on diet, mobility, herd management, and species. Matching these insights from science, the issues raised here include the value of individual animals versus that assigned to species, the challenges of pests, the status ascribed to and reflected by different meat cuts, animals as status and religious symbols, and animals’ tertiary products or uses (e.g., transport versus traction, bile). These studies allow a more detailed reconstruction of Near Eastern economy and society, as well as emphasizing the flexibility of the relationships between animals, as well as between human and animal.

The authors implicitly advocate for a posthumanist multispecies ethnography, which incorporates

nonhumans and argues for equal care to be given to nonhumans in the realms of shared landscapes, violence, labour and especially ecology (Kirksey & Helmreich 2010; Kopnina 2017; Parathian *et al.* 2018). This approach advocates for nonhumans' agency in creating shared worlds, in contrast to the traditional approach to animals as symbols or resources in the service of humans. Going forward, the challenge will be to convert the acknowledgement of equal cultural contribution into support for nonhuman species to speak for themselves; this shift from passive subject of research inquiry to genuine active agency in academic writing does not have an easy or obvious path, and many nonhuman animals may be overlooked. Indeed, multispecies ethnography ideally seeks to incorporate plants, microbes, stones and more (Ogden *et al.* 2013; Smart 2014), many of which are ephemeral in the archaeological record and all but omitted in ancient texts. However, ancient texts do support a new approach which questions our modern boundaries between species. Our perpetual struggle to translate terms for different species of equids, to distinguish whether a word refers to rats or mice, or to link zooarchaeological remains to lexical lists, reinforces the complexity and flexibility of these concepts, and the futility of attempts at absolute categorization.

The chapters in this volume should inspire colleagues to grapple with animals, nonhumans and contexts that could not be included here. For instance, the snake has as lengthy a history of human engagement in the Near East as does the lion and had similarly unusual powers. While the lion was an icon of strength, the perfect symbol for the proximity of the emotions of awe and fear, the snake has the sneaky ability to slither

between worlds, to avoid capture, and to deliver an almost imperceptible lethal injury. Fear of the snake conquers awe. Like the fox, the presence or actions of the snake, as listed in *Šumma ālu*, may be positive or negative omens. The snake was present at key moments in both Mesopotamian and Biblical literature; its actions (stealing the plant of immortality, offering the fruit of the tree of knowledge) changed the fate of humans forever. Whether represented coiled and copulating on Late Chalcolithic seals, grasped by Late Uruk 'Masters of Animals' or first millennium BC *lamaštu*, snakes and their paradoxical nature deserve deep scrutiny. There are many other nonhuman animals deserving of similar problematization and integration, and the eclectic and exciting research stream represented by this volume shows us the way.

References

- Kirksey, S.E. & S. Helmreich, 2010. The emergence of multispecies ethnography. *Cultural Anthropology* 25(4), 545–76.
- Kopnina, H., 2017. Beyond multispecies ethnography: engaging with violence and animal rights in anthropology. *Critique of Anthropology* 37(3), 333–57.
- Levi-Strauss, C., 1963. *Totemism*. Boston: Beacon Press.
- Ogden, L., B. Hall & K. Tanita, 2013. Animals, plants, people and things, a review of multispecies ethnography. *Environment and Society* 4(1), 5–24.
- Parathian, H., M. McLennan, C. Hill, A. Frazão-Moreira & K. Hockings, 2018. Breaking through interdisciplinary barriers: human-wildlife interactions and multispecies ethnography. *International Journal of Primatology* 39, 749–75.
- Smart, A., 2014. Critical perspectives on multispecies ethnography. *Critique of Anthropology* 34(1), 3–7.

Chapter 12

An abstract Agent-Based Model (ABM) for herd movement in the Khabur Basin, the Jazira

Tuna Kalaycı & John Wainwright

Herd animals are significant agents of landscape transformation. Their repetitive movement may result in track formation while also reducing or completely eliminating vegetation growth along those tracks (Apollo *et al.* 2018). Herds can also drastically alter the geomorphology of a region so that new hydro-landscapes are born out of their movement (Butler 2006). In great numbers, animal droppings can introduce pathogens to the soil and adversely affect productivity and watersheds (Tate *et al.* 2003). Conversely, specific grazing patterns may result in better soil fertility (e.g. Cao *et al.* 2018). Also, the level of compaction may vary with different grazing intensities and soil types (e.g. Hiernaux *et al.* 1999). Furthermore, amounts of nutrition return to the soil in animal faeces and urine (Haynes & Williams 1993).

To balance the negative and positive impacts, the management of herding practices is a concern across the globe. In order to mitigate the adverse effects of animal movement, scholars have investigated the relationship between herding and soil-treatment practices (e.g. Franzluebbers & Stuedemann 2008), pests (e.g. Goosey *et al.* 2005), soil chemical properties (e.g. Li *et al.* 2008), and plant diversity (e.g. Ludvikova *et al.* 2014). Although seemingly a modern phenomenon, similar issues must also have been observed in the past, especially around large urban centres where humans and animals co-existed in considerable numbers (Archi 1990, 19; Sallaberger 2014, 101).

The Jazira Region of Upper Mesopotamia, and in particular its Khabur Basin, offers an ideal case study for investigating the impact of herd movement on the landscape using a quantitative approach. The evidence of movement remains visible today in the form of linear features, known as hollow ways (Wilkinson 1993), which are especially evident on aerial and satellite imagery (Ur 2003). The hollow ways have already been documented in great detail (Ur 2017). Despite the available

scholarship on the topic (Casana 2013; Wilkinson *et al.* 2010), the ways in which past societies managed herd movement and the impact of herd movement on landscape formation remains an intriguing question.

In this chapter, we investigate the herd movement around Tell Brak (ancient Nagar) and the impact of treading on the landscape using an agent-based model. Wainwright & Millington (2010) suggest that Agent Based Models (ABMs) with their bottom-up structures can be invaluable for integrating human activity into landscape studies. This is especially significant since an agent-based approach also provides the means for an empirical analysis. Therefore, an ABM can be used to explore the emergence of hollow ways and shed light on the landscape evolution of Upper Mesopotamia. The methodology to be used in this chapter includes exploring various scenarios with different levels of rainfall and moisture loss, as well as varying numbers of animal agents on a realistic landscape. The proposed methodology is expandable to other sites in the Jazira region and to other regions exhibiting similar background characteristics as the Jazira.

The Jazira

The Jazira is the vast area between the banks of the Upper Tigris and the Euphrates Rivers. It falls within the modern-day borders of Syria, Iraq, and Turkey. To the north, the region is bounded by the high-altitude Taurus-Zagros Mountains. To the south, desert conditions gradually form an arid landscape. The region is composed of low-angled slopes. Other than two major sedimentary ridges (the Jebel Abd al-Aziz and Jebel Sinjar) and numerous mounded settlements of various sizes, there are no obtrusive features in the gently undulating landscape (Wilkinson 1990) (Fig. 12.1).

The drainage system of the Jazira includes ephemeral wadis and perennial streams, the most prominent of which are the Balikh and Khabur Rivers (tributaries

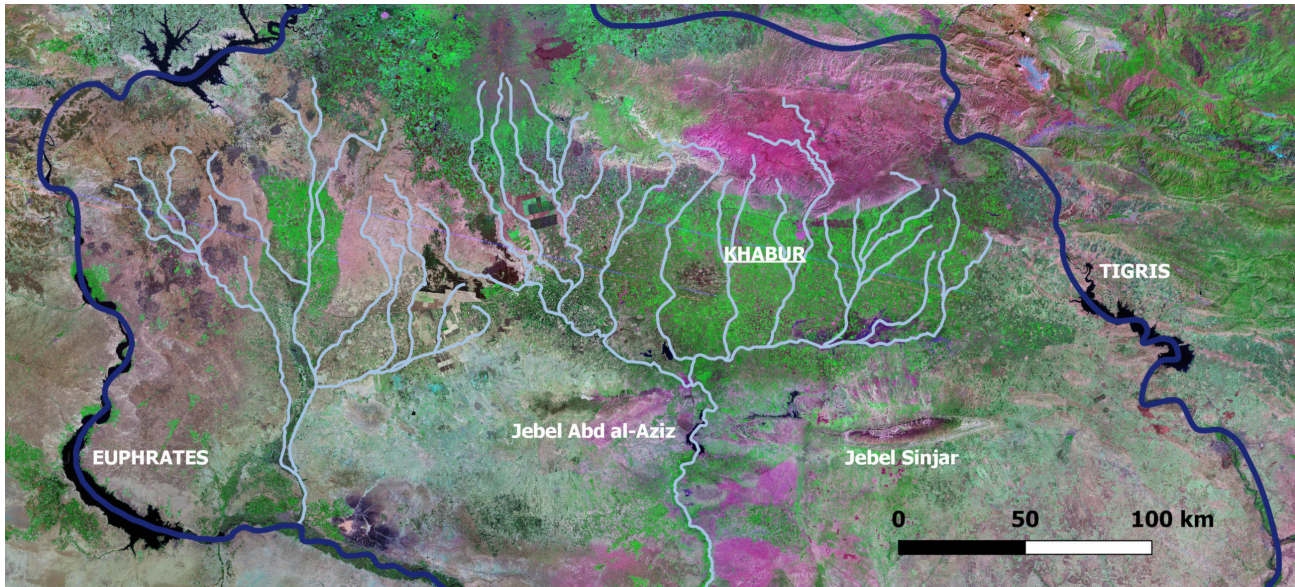


Figure 12.1. Upper Mesopotamia lies between Tigris and Euphrates Rivers. The Khabur Basin is part of the Euphrates River. The intensification of agricultural production is visible on Landsat TM Mosaic.

of the Euphrates) (Wilkinson 1990). Springs in the area provide water for perennial flow. The Khabur River is mainly fed by the karstic springs of Ras al-Ain (average discharge of $40 \text{ m}^3 \text{ s}^{-1}$) while the Balikh River gets most of its water from the spring at Ain al-Arus (average discharge of $6 \text{ m}^3 \text{ s}^{-1}$) (Llamas & Custodio 2003, 361). The flow increases after the winter rains (Wirth 1971, 110), but is without high floods.

Soil types vary. Matar (1980, 72) suggested two major categories in the wider region: soils which originate from hard limestones are red to reddish brown and have clayey to clayey-loam textures, while soils derived from softer limestones are lighter in colour and usually have a higher lime content. Matar's other classification is related to the climatic pattern: soils in the wetter region are dark brown with a clayey texture, while those in drier areas are yellowish brown with a silty texture.

The region has a dry climate. Today, the majority of the precipitation falls between September and May, and summers are hot with little to no rainfall. Due to this aridity, streams and wadis must have played significant roles in human occupation (Deckers & Riehl 2007). The aridity increases north to south; the 300 mm isohyet sets the critical threshold for rainfed agriculture (Wilkinson 1994). This threshold roughly matches with the alignment of the Jebel Abd al-Aziz and Jebel Sinjar.

There has been a significant amount of recent land-use transformation in the Khabur. Hole & Smith (2004) state that only a century ago the Khabur was

home to migratory herders and that the basin only recently became one of the most intensively cultivated regions in the area. Nevertheless, starting in 2006 and continuing for more than half a decade, Syria experienced multi-season, multi-year droughts. In 2008, rainfall in eastern Syria dropped to 30 per cent of the annual average. Wheat production based on water sources other than irrigation dropped by 82 per cent. Overgrazing, coupled with extreme dry conditions, depleted animal food stocks and the herding economy was drastically damaged (ASCAD 2011). Since then, the civil war which began in Syria in March 2011 has been further devastating the people and the land.

Herding practices: Some historical corollaries

During the 1980s, Gallacher (1980, 52) observed that herds were brought from the Syrian steppes after the cereal harvest and that animals were kept in the area until the stubbles were ploughed. In the same time period, but describing the wider Near East, Huss (1980, 269) stated that herding was practised by nomads or transhumant herders. In 1947, Rowlands extensively wrote about the nomadic lifestyle in the Khabur. In 1853, Austen Henry Layard noted the Khabur for 'its rich pastures [that] are the resort of wandering tribes of Arabs' (p. 195). In Ottoman Syria (sixteenth to twentieth centuries), herders had a dynamic socio-political character, and the division between sheep tenders and villagers was not that clear. In fact, individuals and small groups opportunistically shifted between sedentism and migratory

herding, which in return created the conditions of reciprocity between the sedentary and nomadic groups (Douwes 2000, 22–3). In the eighteenth century BC, large parts of the Khabur were controlled by the nomadic population (Sallaberger 2007, 418). The Khabur was also occupied by sheep herders in the first millennium BC (Hole & Smith 2004, 212).

In this condensed and considerably naive linear historical narrative, the availability of grazing land is the common denominator for a herding system to survive and flourish. According to Smith (1980, 143), grazing land is the land that is not suitable or not required for agricultural production. Following this definition, one can further claim – albeit with a simplistic assumption – that suitability for grazing provides clues about environmental conditions and that production requirements point to socio-economic and political considerations.

As for the environmental conditions, Smith (1980) drew a somewhat sharp line by suggesting that fodder production is possible in areas where precipitation is more than 350 to 400 mm per annum. Therefore, large herds can be maintained only when there is enough crop surplus. Herd maintenance is also possible when there are crop by-products which are suitable for livestock feeding and/or when ley farming is required to ensure soil fertility. Finally, herd animals also can be kept in order to mitigate climatic variations, especially when precipitation levels drop below a critical threshold.

The socio-economic and political preconditions of herd movement and control also are worth noting. The *hema* (pl. *ahmia*) was one of the earliest forms of land grazing systems. The Near Eastern *hema* imposed grazing prohibitions during the wet season in order to establish a reserve for the exclusive use of certain groups during the dry season. Draz (1980, 295–6) classified the *ahmia* into three types: full prohibition, seasonal prohibition, and restricted grazing (in which the number and types of animals are specified). The *hema* was also imposed for beekeeping, and the grazing restrictions were removed when the flowering season was over. Finally, the *hema* was used to protect forest trees. In Syria, Draz reported a large number of *hema*-like reservations with the local name *mahmia*. *Koze*, the Kurdish word for *Hema*, has been also traced along the Syrian-Turkish-Iraqi borders (1980, 296).

Herding practices during the Bronze Age

The Jazira witnessed significant cultural developments during the Bronze Age. Especially during the second half of the third millennium BC (mid-to-late Early Bronze Age), rapid urbanization and the intensification of agricultural production shaped a

completely new landscape. A distinct hierarchical settlement pattern was born in this period which suggests a dichotomy between the urban and the rural. The new urban economy needed large quantities of surplus staples (Kalaycı 2013). The change must also have necessitated the disciplining of the settlement hinterlands. The delicate balance between the large number of herd animals – in particular the sheep, which were kept primarily for their wool – and the calorific needs of humans and animals (which were mainly satisfied through rain-fed agricultural production) created a unique movement landscape in Upper Mesopotamia (Fig. 12.2).

In this archaeological setting, two groups of hollow ways were formed: (i) those radiating from the settlements and abruptly terminating after running for two to three kilometres, and (ii) longer hollow ways connecting various Early Bronze Age settlements together. Wilkinson (1993) suggested that the first group of hollow ways were used for controlled transportation of flocks from settlements to open pasture land. While moving, livestock was kept together to minimize crop damage, and when the production boundary was passed, flocks were allowed to disperse in open pastureland. As a result of their continuous use by herd animals – but also by farmers and carts – linear depressions were formed around the settlements. The second group of hollow ways must have been used for the transportation of agricultural surplus, other commodities, and gift animals from one settlement to another.

Hollow ways around Tell Brak

Tell Brak is one of the most prominent settlements in the Khabur Basin. Occupation at the site began as early as the Halaf Period (mid-seventh millennium BC), and with some ebb and flow it continued until the Late Islamic/Ottoman Period. The total occupation area is around 300 hectares, but it appears that the site was never settled in its entirety at a single point in time (Ur *et al.* 2011, 3). During the mid-to-late third millennium BC, the epoch of urbanization in Upper Mesopotamia also affected the settlement. The intensification of agriculture, alongside the controlled movement of flocks, formed the signature off-site features, the hollow ways. The lower town may have been abandoned at the end of the Akkadian period and the area of occupation reduced in size, based on the lack of diagnostic post-Akkadian ceramics in this area (Ur *et al.* 2011, 12). The site (especially its lower town) attracted residents once again in the Late Bronze Age.

Based on the assessment of historical CORONA imagery, Ur (2003, 110) identified 48 hollow-way

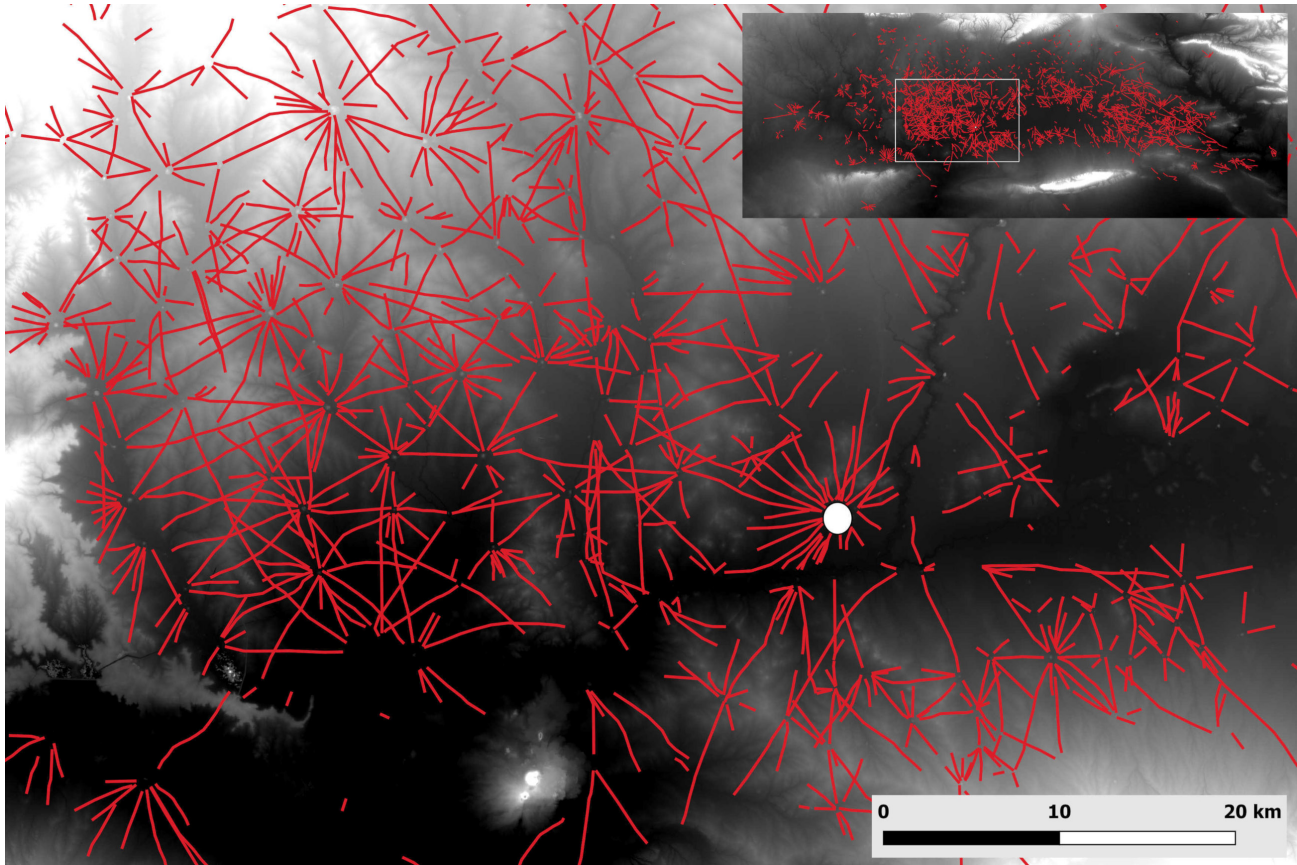


Figure 12.2. The Khabur Basin was criss-crossed by a dense network of hollow ways. The white dot marks the location of Tell Brak.

segments with a total length of 67.1 km and an average length of *c.* 1.4 km. The radial pattern is evenly distributed except in the site's southeastern catchment (Fig. 12.3). The absence in this area is attributed to the impact of irrigation during the Abbasid Period (*c.* AD 600–1000) (Ur *et al.* 2011, 16). The geoarchaeological study by Wilkinson *et al.* (2010) shows that the hollow ways started to form in the landscape in the Early Bronze Age (or slightly earlier) where their fills also indicate low-energy sediment movement accompanied by weak soil formation.

Herd animals as geo-agents of landscape transformation

Herd animals apply pressure on the ground and deform soils. The deformation process generally leads to a reduction in soil porosity and an increase in soil bulk density (Drewry & Paton 2005). In return, the infiltration capacity of the soil decreases (Mulholland & Fullen 1991) and surface runoff shapes a new physical environment (Di *et al.* 2001). The process also

results in increased wind erosion, especially after a new plasticity level is reached when the soil dries out.

The pressure exerted on soils depend on two variables: the weight of the animal, and the contact area between the hoof and the soil surface (Fig. 12.4). In mathematical terms, the pressure is defined as:

$$p = F / A;$$

where *p* is the pressure (Pa), *F* is the magnitude of the normal force (N), and *A* is the area of surface contact (sq. m). This relationship suggests that the pressure increases as the animal weight increases, or as the hoof area decreases. Therefore, it can be deduced that different species exert different pressure on the ground. Furthermore, the sex and age of an animal determine its weight as well as its hoof area, such that applied pressure can be variable even within the same species.

For instance, the Awassi sheep, which is the most common species in Iraq and Syria, weighs around 4 kg at birth and can reach up to 70 kg as an adult.

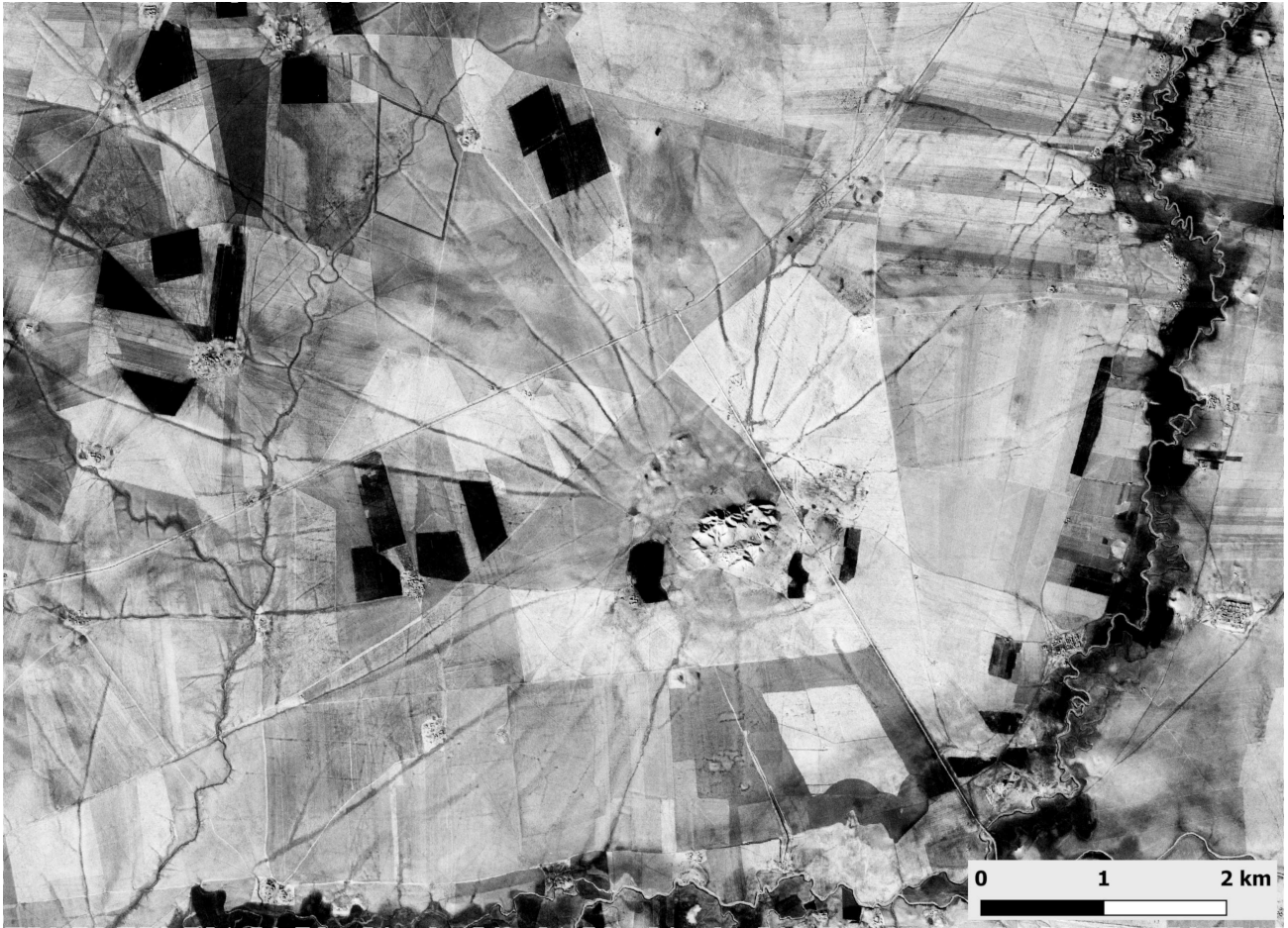


Figure 12.3 (above). A scene from a CORONA historical satellite image (DS1102-1025DA013) preserves the details of the radial route system around Tell Brak. The layout of the system is clear. Notably, hollow ways appear to be missing southeast of the site.

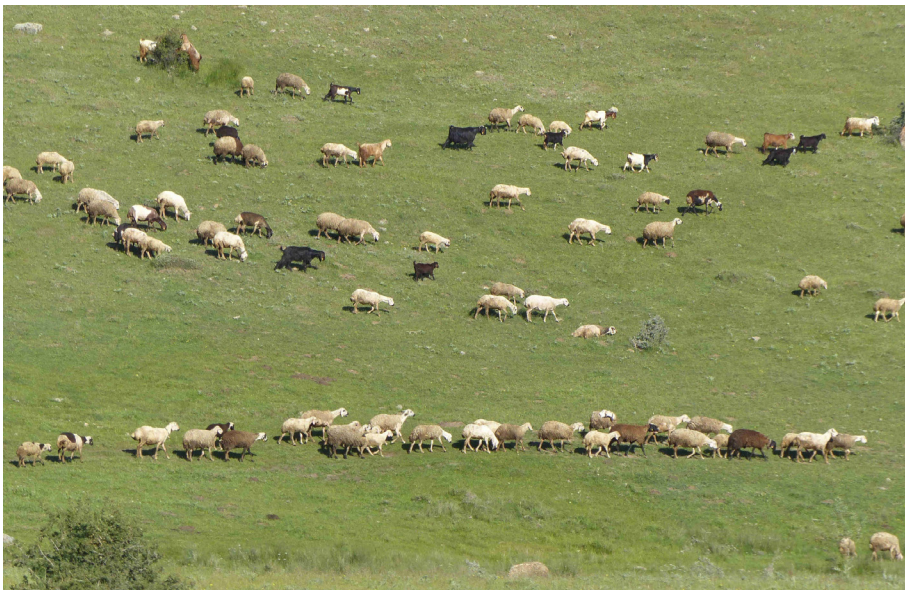


Figure 12.4 (left). Variable herd movement strategies differentially alter landscapes. Animals walking in a straight line (below) tend to form paths relatively quickly. When scattered, the impact of treading is less visible (above).

If one assumes a 2,000 sq. mm hoof area, then an Awassi would exert around 90 kPa of pressure per hoof. South Anatolian red cattle are around 25 kg at birth, and as adults, males can reach 600 kg and females up to 450 kg. If one assumes a 10,000 sq. mm hoof area for the South Anatolian, then the pressure exerted per hoof is around 150 kPa for males and 110 kPa for females.

When a healthy animal is standing, the weight is equally distributed among the four hoof areas. The total pressure increases when the animal begins walking and contact with the ground occurs between only two to three hooves at any given time. The pressure is further increased when the hoof is not in full contact with the soil surface due to microtopographic variations (Di *et al.* 2001). Therefore, the actual pressure metrics are much more variable than the abovementioned algebraic formula, which represents estimates of the minimum pressures involved.

The species and the age of the animal also determine its shoulder height and, in return, its stride length. The stride length, which is the distance between each step, dictates the number of steps an animal must take to travel a given unit of distance. Thus, the cumulative impact of movement on soils is not only determined by the number of animals, but also their stepping frequencies. At the same time, stepping frequency is a function of herd size above a threshold; for large herds the movement of one animal affects the trajectory and speed of another.

The mechanics of soil deformation

Soil deformation is determined not only by hoof pressure, but also by the texture of soil and its moisture content. The size and arrangement of soil particles determine the volume and configuration of pores in the soil. Essentially, the force under the hoof area changes the porosity and, thus, determines the water-holding capacity of the soil (Houlbrooke & Laurenson 2013).

Soil deformation is usually limited to the upper 50–150 mm layer of soils. Once the compaction takes place, it is only a slowly reversible process, for instance, due to the reduced activity of microfauna in the soil (Drewry 2006; Greenwood & McKenzie 2001) or the effect of wetting/drying or freezing/thawing. Deformation causes variations in the physical properties of soils which, in turn, affect vegetation growth and productivity (Bell *et al.* 2011). Based on the level of water content in a given area, soil deformation can follow three different paths: compaction, pugging, and poaching. Any of these processes can occur in the area depending on the season and timing of the herding event, relative to precipitation events.

a) Compaction

Compaction is the compression of unsaturated soils which results in the reduction of the unit volume. (Canillas & Salokhe 2001). When an animal exerts pressure, the soil particles under the hoof area are pushed closer to each other. Repetition of this event eventually results in increased soil bulk density (Di *et al.* 2001). For some disturbances, the soil shear strength decreases when the surface is disturbed by animals (see Table II in Parsons & Wainwright 2006)

b) Pugging

Pugging is the process by which the animal hoof leaves a deep print in wet soil (Drewry 2006). When the hoof leaves the soil, the imprint remains intact, resulting in rough and uneven soil surfaces. However, it is not only the water content but also the texture of the soils which determine the level of pugging. Soils with higher clay levels are more plastic than other types and, thus, more susceptible to pugging (Kellett 1978 in Bilotta *et al.* 2007)

c) Poaching

Poaching is the deformation which occurs when the hoof penetrates the (over-)saturated soil surface as well as the soil below (Drewry 2006). Since the soil is slurry, there is considerable structural recovery at the end. Nevertheless, poaching tends to reconfigure fine soil particles and may result in the formation of surface pans as the soil dries out.

Methodology

Agent-Based Modelling

Agent-Based Modelling (ABM) is a computational technique within which a group of decision-making entities (called 'agents') interact with each other and/or with other types of entities in a synthetic environment. The interaction is based on a set of explicitly defined rules, which may range from simple decisions to complex spatio-temporal phenomena. What is especially compelling with ABM is its potential for capturing emerging processes from the bottom up (Bonabeau 2002).

An ABM is also useful when there are little or no available empirical data. Simulated agents and their synthetic interactions with the landscape – and each other – may generate patterns which then can be cross-examined with other observed proxy variables. Therefore, an agent-based model can be used to build numerous scenarios and then investigate their viabilities. ABMs can be extremely beneficial tools in modelling dynamic feedbacks on landscape (Wainwright 2008; Wainwright & Millington 2010),

but in most current examples the agents operate in a static landscape and their feedbacks are thus limited.

As a spatio-temporal discipline, archaeology has greatly benefited from the scalar flexibility and modelling benefits of ABMs (e.g. Premo 2006; Kohler *et al.* 2008; Janssen 2009; Chliaoutakis & Chalkiadakis 2016). In particular, the integration of ABMs with Geographic Information Systems (GIS) (e.g. Brown *et al.* 2005; O'Sullivan 2008; Davies *et al.* 2019) appears to be a path forward, as these two computational environments complement each other in multiple respects.

An Agent-Based Model for Tell Brak

The ABM was built using NetLogo 6.0.4 with the Cf extension (Wilensky 1999). It is an abstract model with agents walking on actual terrain. Abstraction is due to the fact that physical laws which determine pressure, compaction, and erosion are not directly simulated in this first approximation. Rather, the model is built using a series of parameters. The model mainly aims to investigate:

- the role of herd animals as geomorphic agents,
- the impact of rainfall variation on the formation of hollow ways, and
- the impact of hollow ways on the geohydrological landscape of the Khabur Basin.

Terrain

The background terrain of the ABM was built using the TanDEM-X Digital Elevation Model (Figs. 12.5 and 12.6). The pixel spacing of the TanDEM-X DEM depends on the latitude of observation. For the Tell Brak area, the spatial resolution is *c.* 11.25 m.

In order to ensure a smoother terrain (and to compensate for the DEM generation defects) a Gaussian Filter was applied to the DEM using QGIS (Search Mode: Square, Search Radius: 3 pixels, Standard Deviation: 1 pixel) (Fig. 12.7a). For the second step of DEM processing, a sink fill algorithm was used using SAGA in order to approximate the terrain prior to landscape deformation due to herd movement and other hydrological processes (Qm of Esp, Fill Increment: 0.2 m) (Fig. 12.7b). The final DEM was fed to the ABM after converting the data type from floating point to integer.

(Modified) Hollow ways

The radial configuration of the hollow ways around Tell Brak is complex. In order to give herd animals an equal chance of picking a hollow way at random, a buffer was set around the site and the hollow ways were clipped out from this zone (Fig. 12.8). Therefore, animals starting their journey from the centre of the

settlement have equal distances to travel until reaching any predesignated road. Once an animal starts walking on a hollow way (which is the action that is considered to be the prime driver of hollow way formation), the surface erosion starts.

Agents

In the abstract ABM, there are four types of agent: two related to herd animals and two for the background setting. Herd animals are represented as 'sheep' and 'cow' agents. Due to their differential weights and hoof areas, they exert different pressure levels on soils. The third agent is the 'raindrop'. As previously discussed, soil moisture is one of the main determinants of soil erosion resulting from herd movement. Therefore, in order to investigate various precipitation scenarios and to explore the potential impact of soil-moisture variations on surface erosion, raindrops populate the model. The fourth and last agent is the hollow way. These agents act only to guide the others' movement and help calculate erosion levels for given agent locations, but they do not have an impact on the calculations themselves.

Parameters and rulesets

For the sake of simplicity and in order to reach a solution faster, animal agents are considered to apply differential pressure based on multipliers rather than specific pressure estimates detailed above. Using pressure estimates would have resulted in longer model-run times since hollow ways were actually formed by daily movement of animals which lasted for centuries. Unrealistically increasing the pressure levels using multipliers shortened the development of hollow ways. In this way, it was also possible to use smaller numbers of animal agents (hundreds instead of thousands) which reduced the number of agents at a given step of a run. However, it is important to note that increased modelling efficiency comes at the expense of obtaining realistic surface erosion estimates. In other words, the final level of erosion after each model run is only evaluated qualitatively.

The intensity and duration of rainfall can be adjusted so that different climatic scenarios can be explored. When the 'raindrop' agent falls on the ground, it wets soil with a certain parameter value and it reflects the infiltration process and is based on soil formation. The 'raindrop' agent also wets patches around the initial location with a second user-defined parameter reflecting the runoff process. In order to represent soil-moisture loss due to evapotranspiration and drainage, the soil dries at a rate determined by a third parameter. The boundary patches of the model are set as the outlets where excess water drains. The

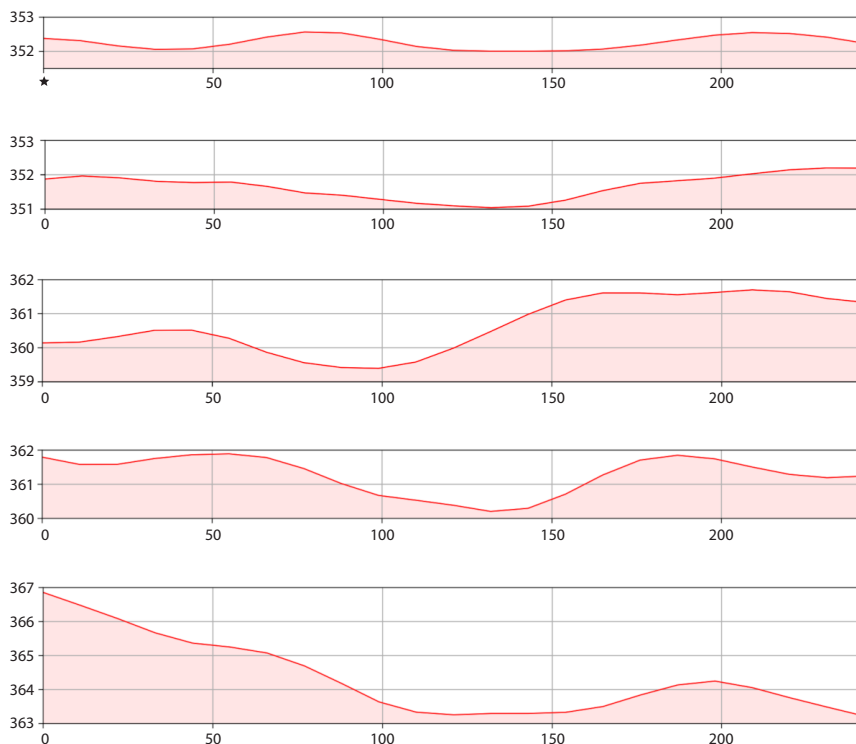
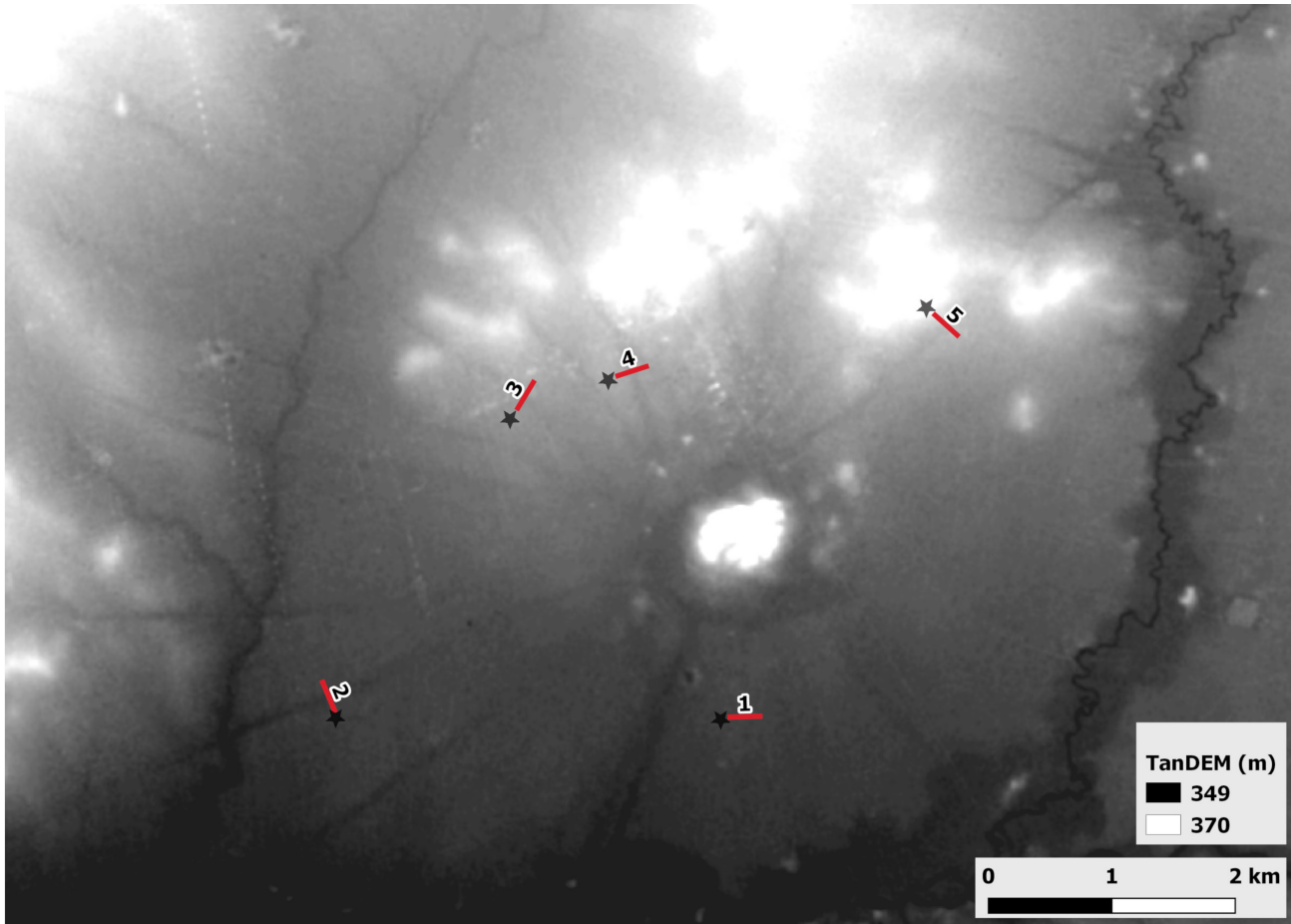


Figure 12.5 (above). Hollow ways (as depressed linear features) are also visible on the TanDEM-X Digital Elevation Model (DEM).

Figure 12.6 (left). Variations in profiles may indicate differential traffic, hydrological systems, and/or preservation conditions.

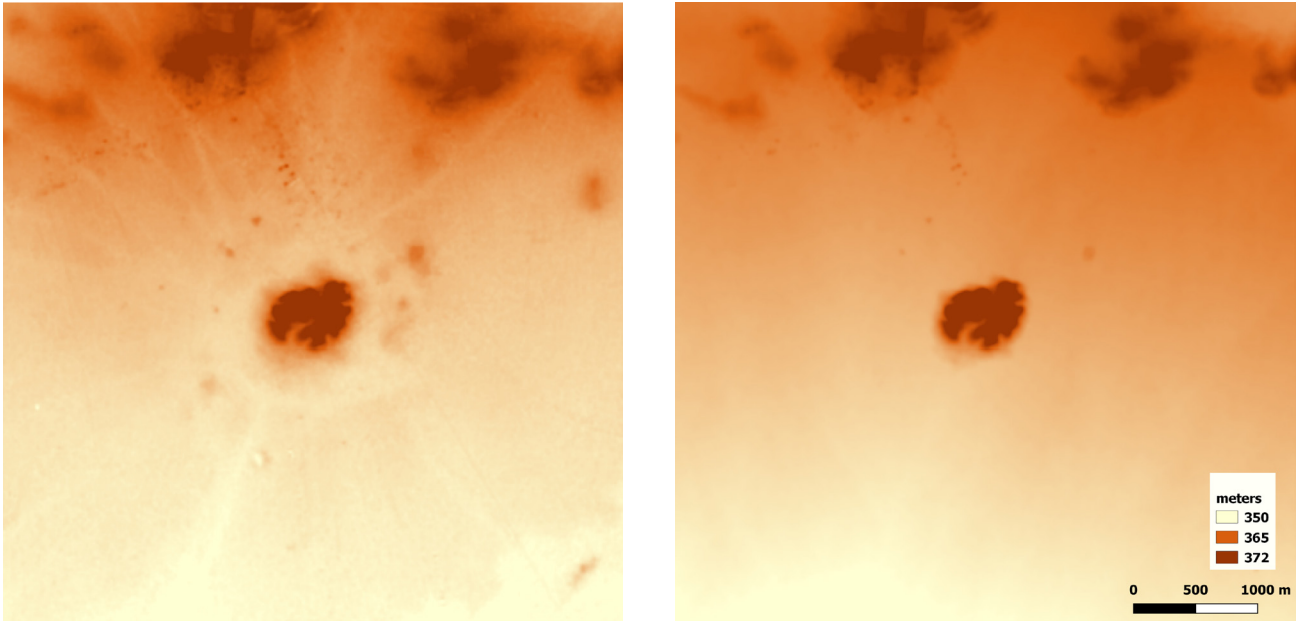


Figure 12.7. (a) TanDEM-X DEM around Tell Brak; (b) the DEM after Gaussian Filtering and Sink Filling in order to ‘approximate’ the terrain prior to incision due to herd movement. After the sink filling operation, the hollow ways disappear while changing the original elevation values.

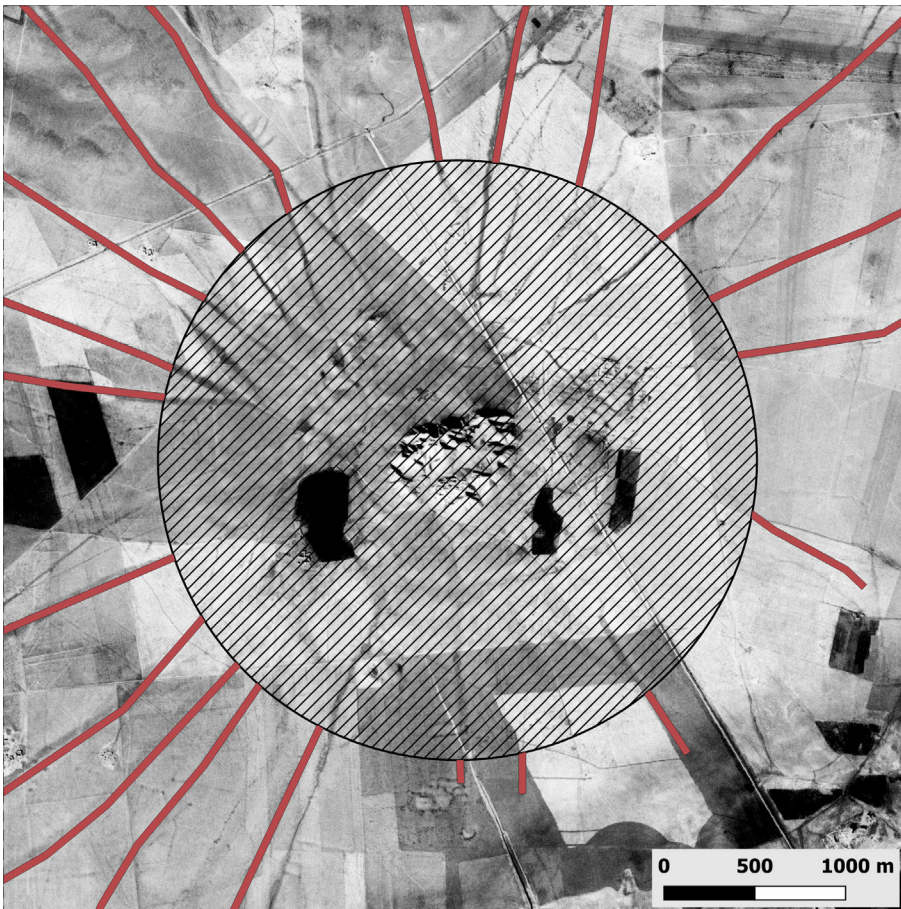


Figure 12.8. Since there is little knowledge as to where the herd animals began branching out when outside of the city, the ABM gives herd animals an equal chance of picking any given hollow way. To accomplish this, a circular zone is set around Tell Brak and the hollow ways are removed to ensure equal distance between the initial location of an animal agent and the starting point of the hollow way.

inclusion of surface runoff in the model is inspired by the erosion model of NetLogo (Dunham *et al.* 2004).

Three hierarchical soil-moisture classes are defined to determine if moving animal agents cause soil compaction, pugging or poaching. The levels of erosion are different for each of these classes. To reduce computational cost, and thus, to decrease the model run-time, erosion due to animal treading is set to zero around the site (Fig. 12.8, hatched area). The erosion initializes when an animal agent sets foot on a hollow way.

Initialization and model run

The herd animals' journeys start from the centre of Tell Brak rather than from the city gates since the exact locations of the city gates are not known (Ur *et al.* 2011). The animal agent randomly sets a heading and begins walking outwards. When the no-erosion zone is passed, it redirects itself towards the closest hollow way. Once on a hollow way, the agent variably erodes the patch (i.e. lowers its elevation) depending on the breed of the agent (sheep or cow). When an agent reaches the terminal point of a hollow way, it is removed from the model domain.

The water level of a patch at the time of treading also determines different levels of erosion. Surface runoff occurs when the water amount (plus the elevation of the patch) exceeds the elevation of neighbouring patches; that is the water spills out towards the lowest elevation around it. Therefore, the combination of animal movement and surface runoff governs the development of the hollow ways.

Results

The abstracted ABM for the herd movement around Tell Brak reveals clues about the emergence of hollow ways and their intrinsic relationship with rainfall, soil moisture, and hydrogeomorphology. Thanks to the flexibility of ABMs, it is possible to explore how the landscape around Tell Brak might have co-evolved due to cultural and natural processes. As anticipated, the ABM unearths more questions than answers due to its heuristic and dialogic properties (Millington & Wainwright 2017).

Under conditions of no precipitation, the animal agents remain the sole landscape modifiers. While this is an unrealistic scenario, it is used to evaluate the behaviour of the model. Their constant movement within the predefined bounds of the hollow ways erode the soil and the model converges to the expected radial pattern (Fig. 12.9a). Despite the fact that the hollow ways were initially assigned equal probabilities of being selected, some were 'chosen' more frequently

than others even after many model-runs. However, the abstracted ABM uses a modified (i.e. clipped) version of hollow way topology and ignores intentionality in route selection. Therefore, this preferential routing is most probably due to modelling bias, for instance due to a specific sequence of random numbers being used by the ABM.

To give a specific example, one of the hollow ways (see the dashed box in Figure 12.9a) was rarely picked by the animal agents for each ABM run. It is likely that the initial heading of an animal had a narrow window walking towards this hollow way and a slight change in the angle resulted in picking the neighbouring routes. This outcome should be considered as an artefact of the model rather than an actual condition for Tell Brak. This is especially true since the hollow ways were clipped and they lost their original spatial configurations. Nevertheless, it throws some questions on the topological relations of radial hollow ways around settlements, and the issue on intentionality on route selection.

In the second scenario (Fig. 12.9b), rainfall takes place with a duration predefined by a parameter. This scenario does not include moving animal agents. As in the case of the previous scenario, the simplistic agent set is used to evaluate model behaviour and to converge to a solution faster. The ruleset causes erosion only due to surface runoff. In this setup, when it stops raining the moisture levels remain the same since there is also no parameter representing evapotranspiration or drainage event. Even though this is an unrealistic scenario, it also rapidly approximates how the landscape around Tell Brak could have evolved under solely natural causes. The locations of documented hollow ways (in transparent red) do not align with emerging water channels. This observation fits well with Wilkinson's argument on the lack of relationship between local topography and the locations of hollow ways (Wilkinson 1993, 548).

In the third scenario (Fig. 12.9c), it again rains with a predefined duration, but animal agents are introduced. As anticipated, treading causes most of the erosion within the bounds of the hollow ways. Furthermore, the hollow ways also facilitate surface runoff, contributing to deeper hollowing. The emerging channel system bifurcates to the greatest degree at cardinal directions. Moreover, water channels usually meet up with hollow ways not at terminal points but rather at their mid-sections. Further modelling is required in order to understand this behaviour.

In the fourth scenario (Fig. 12.9d), water loss is introduced to make the ABM much more realistic. When it stops raining, the water content is also reduced due to evapotranspiration and drainage. This last

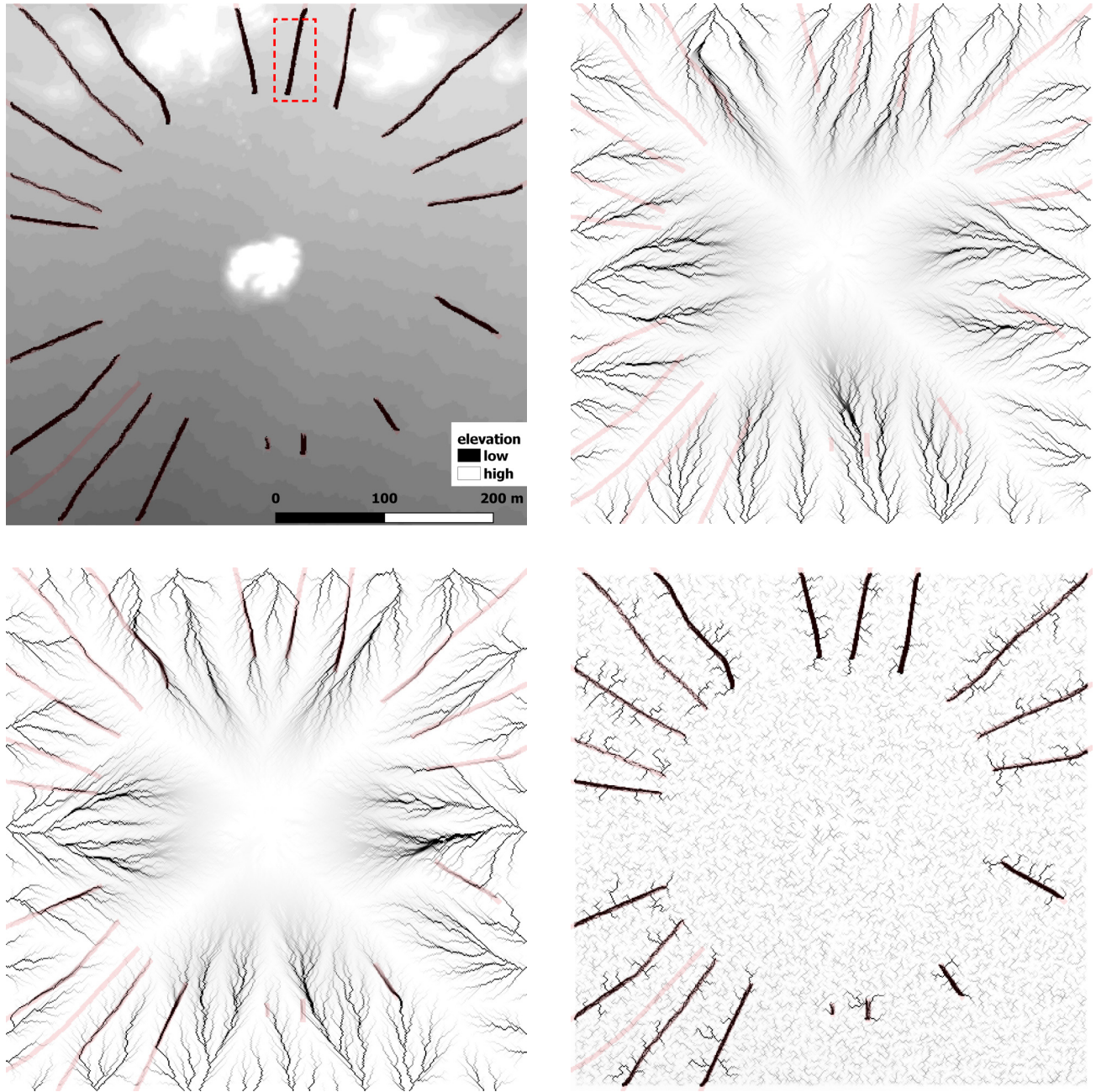


Figure 12.9. The results of the ABM from four main scenarios. The hollow way in the red rectangle appears separately in Fig. 12.10. The transparent red features indicate the original locations of hollow ways. (a) Hollow way formation with no rain. (b) Landscape incision due to surface runoff and without animal movement. (c) Hollow way formation with rainfall event. (d) Hollow way formation due to animal movement with even rainfall, but also with high evapotranspiration.

variable drastically alters the model landscape and we observe the hollow ways acting as local water collectors, which further contributed to pugging and poaching processes. A closer look (Fig. 12.10) at one of the hollow ways (rectangle in Fig. 12.9) clearly shows the spatial details of three rainfall scenarios.

Conclusions

This study aimed ‘to determine quantitatively how hollow ways contributed to the extension of regional hydraulic systems’ (Wilkinson *et al.* 2010, 768). We followed an agent-based modelling approach due

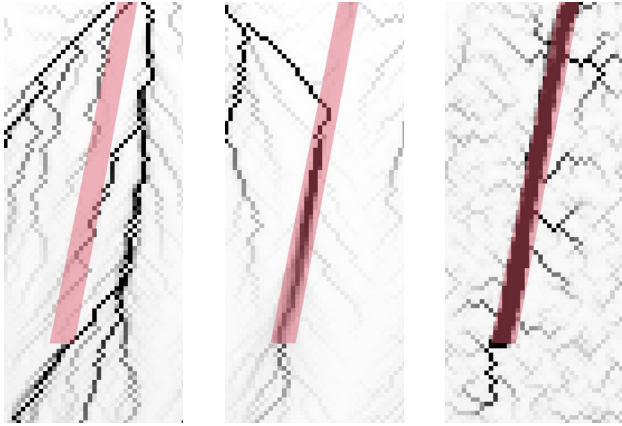


Figure 12.10. A close-up view of one of the hollow ways (rectangle in Fig 9.) around Tell Brak. (a) Surface runoff creates a hydrological landscape in the absence of animal movement. (b) Hollow ways further facilitate surface runoff when it rains. (c) Integrating water loss into the ABM reveals a more realistic model for the hydrogeomorphology around Tell Brak.

to the lack of empirical data concerning the hollow ways. While doing so we also hoped to highlight the significance of herd animals in the formation of landscapes. Humans not only shape their environment with structures, such as irrigation canals, reservoirs, and qanats, but also indirectly change it through disciplining nature (e.g. the *hema*).

Despite the level of abstraction in the model, it is capable of capturing details of geomorphological evolution. The model shows the herding power of animals and how they are capable of shifting the water channels and creating new ones. If the hollow way in Figure 12.9c is an indication of this process, managing agricultural fields around these radial route systems must have been a concern in the Khabur Basin. This is also to say that hollow ways may have been emergent phenomena, but they also required external management.

The mechanisms of formation of hollow ways are truly complex (Wilkinson 1993, 556–8). The abstracted ABM we propose here only catches a glimpse of the real-world problem. Still, it is a clear path forward. As the first step, we will carry our model into Python computational environment which will provide more coding flexibility. In doing so, it will be also possible to integrate realistic environmental simulations to our work so that we can transition from an abstract ABM towards more realistic scenarios. Replacing agent multipliers with the specific hoof pressure estimates will also contribute to this transition. Finally, we will cross-compare the results of ABM with our work focusing on satellite remote sensing (Kalaycı *et al.* 2019).

Acknowledgements

This project is funded by the European Commission's Marie Skłodowska-Curie Actions Programme through an Individual Fellowship granted to 'Geospatial Practices for Ancient Movement Praxis-GeoMOP' with the grant number 747793 (<https://geomop.eu/>). The TanDEM-X data was provided by the German Aerospace Center (DLR), Proposal ID: DEM_OTHER0819. CORONA data is accessible from the Corona Atlas & Referencing System (<https://corona.cast.uark.edu/>). The hollow ways dataset is accessible from the Harvard WorldMap Project: Hollow Ways (<http://worldmap.harvard.edu/maps/14984>). The code for the ABM can be accessed from: <https://gitlab.com/geomop/agent-basedmodel>. The background data can be downloaded from: <https://zenodo.org/record/3354592>. Finally, we would like to thank the organizers of the Conference: 'Fierce lions, angry mice and fat-tailed sheep: Animal encounters in the ancient Near East'.

References

- Apollo, M., V. Andreychouk & S. Bhattarai, 2018. Short-term impacts of livestock grazing on vegetation and track formation in a high mountain environment: a case study from the Himalayan Miyar Valley (India). *Sustainability* 10(4), 951.
- Archi, A., 1990. The city of Ebla and the organization of the rural territory, in *The Town as Regional Economic Center in the Ancient Near East*, eds. E. Aertz & H. Klengel. Leuven: Leuven University Press, 15–19.
- ASCAD, 2011. *Drought Vulnerability in the Arab Region: Case study; Drought in Syria – Ten Years of Scarce Water (2000–2010)*. Cairo & Damascus: United Nations, secretariat of the International Strategy for Disaster Reduction Regional Office for Arab States (ISDR) & The Arab Center for the Studies of Arid Zones and Dry Lands.
- Bell, L.W., J.A. Kirkegaard, A. Swan, J.R. Hunt, N.I. Huth & N.A. Fettell, 2011. Impacts of soil damage by grazing livestock on crop productivity. *Soil and Tillage Research* 113(1), 19–29.
- Bilotta, G.S., R.E. Brazier & P.M. Haygarth, 2007. The Impacts of grazing animals on the quality of soils, vegetation, and surface waters in intensively managed grasslands. *Advances in Agronomy* 94, 237–80.
- Bonabeau, E., 2002. Agent-based modeling: methods and techniques for simulating human systems. *Proceedings of the National Academy of Sciences* 99 (suppl 3), 7280–7.
- Brown, D.G., R. Riolo, D.T. Robinson, M. North & W. Rand, 2005. Spatial process and data models: toward integration of agent-based models and GIS. *Journal of Geographical Systems* 7(1), 25–47.
- Butler, D.R., 2006. Human-induced changes in animal populations and distributions, and the subsequent effects on fluvial systems. *Geomorphology* 79(3–4), 448–59.
- Cao, J., X. Xu, R.C. Deo, N.M. Holden, J.F. Adamowski, Y. Gong, Q. Feng, S. Yang, M. Li & J. Zhou, 2018.

- Multi-household grazing management pattern maintains better soil fertility. *Agronomy for Sustainable Development* 38(1), 6.
- Casana, J., 2013. Radial route systems and agro-pastoral strategies in the Fertile Crescent: new discoveries from western Syria and southwestern Iran. *Journal of Anthropological Archaeology* 32(2), 257–73.
- Chliaoutakis, A. & G. Chalkiadakis, 2016. Agent-based modeling of ancient societies and their organization structure. *Autonomous Agents and Multi-Agent Systems* 30(6), 1072–116.
- Davies, B., I. Romanowska, K. Harris & S.A. Crabtree, 2019. Combining Geographic Information Systems and agent-based models in archaeology: part 2 of 3. *Advances in Archaeological Practice* 7(2), 185–93.
- Di, H.J., K.C. Cameron, J. Milne, J.J. Drewry, N.P. Smith, T. Hendry, S. Moore & B. Reijnen, 2001. A mechanical hoof for simulating animal treading under controlled conditions. *New Zealand Journal of Agricultural Research* 44(1), 111–16.
- Douwes, D., 2000. *The Ottomans in Syria: A History of Justice and Oppression*. London & New York: I.B. Tauris.
- Draz, O., 1980. Rangeland development in the Arabian Peninsula based on Syrian experience through UNDP/FAO/WFP assistance, in *Rainfed Agriculture in the Near East and North Africa: Proceedings of the FAO Regional Seminar on Rainfed Agriculture in the Near East and North Africa held in Amman, Jordan, 5-10 May 1979*, ed. Food and Agriculture Organization Near East Regional Office and Soil Resources, Management, and Conservation Service, Land and Water Development Division. Amman, Jordan: Food and Agriculture Organization of the United Nations, 291–303.
- Dunham, G., S. Tissue & U. Wilensky, 2004. *NetLogo Erosion Model*. Evanston (IL): Center for Connected Learning and Computer-Based Modeling, Northwestern University.
- Franzluebbers, A.J. & J.A. Stuedemann, 2008. Soil physical responses to cattle grazing cover crops under conventional and no tillage in the Southern Piedmont USA. *Soil and Tillage Research* 100(1), 141–53.
- Gallacher, R., 1980. Intensification of dryland farming in north Syria, in *Rainfed Agriculture in the Near East and North Africa: Proceedings of the FAO Regional Seminar on Rainfed Agriculture in the Near East and North Africa held in Amman, Jordan, 5-10 May 1979*, ed. Food and Agriculture Organization Near East Regional Office and Soil Resources, Management, and Conservation Service, Land and Water Development Division. Amman, Jordan: Food and Agriculture Organization of the United Nations, 50–8.
- Goosey, H.B., P.G. Hatfield, A.W. Lenssen, S.L. Blodgett & R.W. Kott, 2005. The potential role of sheep in dryland grain production systems. *Agriculture, ecosystems & environment* 111(1–4), 349–53.
- Haynes, R.J. & P.H. Williams, 1993. Nutrient cycling and soil fertility in the grazed pasture ecosystem. *Advances in Agronomy* 49, 119–99.
- Hiernaux, P., C.L. Bielders, C. Valentin, A. Bationo & S. Fernandez-Rivera, 1999. Effects of livestock grazing on physical and chemical properties of sandy soils in Sahelian rangelands. *Journal of Arid Environments* 41(3), 231–45.
- Hole, F. & R. Smith, 2004. Arid land agriculture in north-eastern Syria; will this be a tragedy of the commons? in *Land Change Science: Observing, Monitoring, and Understanding Trajectories of Change on the Earth's Surface*, eds. G. Gutman, A.C. Janetos, C.O. Justice, E.F. Moran, J.F. Mustard, R.R. Rindfuss, D. Skole, B.L.I. Turner & M.A. Cochrane. Dordrecht, Boston & London: Kluwer Academic Publishers, 209–22.
- Houlbrooke, D.J. & S. Laurenson, 2013. Effect of sheep and cattle treading damage on soil microporosity and soil water holding capacity. *Agricultural Water Management* 121, 81–4.
- Huss, D.L., 1980. Rationalizing rangeland use by modernizing nomadism, in *Rainfed Agriculture in the Near East and North Africa: Proceedings of the FAO Regional Seminar on Rainfed Agriculture in the Near East and North Africa held in Amman, Jordan, 5-10 May 1979*, ed. Food and Agriculture Organization Near East Regional Office and Soil Resources, Management, and Conservation Service, Land and Water Development Division. Amman, Jordan: Food and Agriculture Organization of the United Nations, 269–77.
- Janssen, M.A., 2009. Understanding artificial anasazi. *Journal of Artificial Societies and Social Simulation* 12(4), 13.
- Kalaycı, T., 2013. *Agricultural Production and Stability of Settlement Systems in Upper Mesopotamia During the Early Bronze Age (Third Millennium BCE)*. PhD dissertation, unpublished. Fayetteville (AR): University of Arkansas.
- Kalaycı, T., R. Lasaponara, J. Wainwright & N. Masini, 2019. Multispectral contrast of archaeological features: a quantitative evaluation. *Remote Sensing* 11(8), 913.
- Kohler, T.A., M.D. Varien, A.M. Wright & K.A. Kuckelman, 2008. Mesa verde migrations: new archaeological research and computer simulation suggest why ancestral Puebloans deserted the northern southwest United States. *American Scientist* 96(2), 146–54.
- Layard, A.H., 1853. *Discoveries among the Ruins of Nineveh and Babylon; with Travels in Armenia, Kurdistan, and the Desert*. New York: G.P. Putnam & Co.
- Li, C., X. Hao, M. Zhao, G. Han & W.D. Willms, 2008. Influence of historic sheep grazing on vegetation and soil properties of a desert steppe in Inner Mongolia. *Agriculture, Ecosystems & Environment* 128(1–2), 109–16.
- Llamas, M.R. & E. Custodio (eds.), 2003. *Intensive Use of Groundwater: Challenges and Opportunities*. Boca Raton (FL): CRC Press.
- Ludvikova, V., V.V. Pavlu, J. Gaisler, M. Hejzman & L. Pavlu, 2014. Long term defoliation by cattle grazing with and without trampling differently affects soil penetration resistance and plant species composition in *Agrostis Capillaris* grassland. *Agriculture, Ecosystems & Environment* 197, 204–11.
- Matar, A., 1980. Fertilization studies under the rainfed agriculture of Syria, in *Rainfed Agriculture in the Near East and North Africa: Proceedings of the FAO Regional Seminar on Rainfed Agriculture in the Near East and North Africa held in Amman, Jordan, 5-10 May 1979*, ed. Food and

- Agriculture Organization Near East Regional Office and Soil Resources, Management, and Conservation Service, Land and Water Development Division. Amman, Jordan: Food and Agriculture Organization of the United Nations, 71–82.
- Millington, J.D.A. & J. Wainwright, 2017. Mixed qualitative-simulation methods: understanding geography through thick and thin. *Progress in Human Geography* 41(1), 68–88.
- O’Sullivan, D., 2008. Geographical information science: agent-based models. *Progress in Human Geography* 32(4), 541–50.
- Parsons, A.J. & J. Wainwright, 2006. Depth distribution of interrill overland flow and the formation of rills. *Hydrological Processes* 20(7), 1511–23.
- Premo, L., 2006. Agent-based models as behavioral laboratories for evolutionary anthropological research. *Arizona Anthropologist* 17, 91–113.
- Sallaberger, W., 2007. From urban culture to nomadism: a history of Upper Mesopotamia in the late third millennium, in *Sociétés humaines et changement climatique à la fin du troisième millénaire: une crise a-t-elle eu lieu en Haute Mésopotamie?*, eds. C. Kuzucuoglu & C. Marro. (Varia Anatolica 19.) Istanbul: Institut Français d’Études Anatoliennes-Georges Dumézil, 417–56.
- Sallaberger, W., 2014. The value of wool in Early Bronze Age Mesopotamia. On the control of sheep and the handling of wool in the Presargonic to the Ur III Periods (c. 2400–2000 BC), in *Wool Economy in the Ancient Near East and the Aegean: From the Beginnings of Sheep Husbandry to Institutional Textile Industry*, eds. C. Breniquet & C. Michel. (Ancient Textiles Series 17.) Oxford & Philadelphia: Oxbow Books, 94–114.
- Smith, A.J., 1980. The integration of livestock into rainfed agricultural systems, in *Rainfed Agriculture in the Near East and North Africa: Proceedings of the FAO Regional Seminar on Rainfed Agriculture in the Near East and North Africa held in Amman, Jordan, 5-10 May 1979*, ed. Food and Agriculture Organization Near East Regional Office and Soil Resources, Management, and Conservation Service, Land and Water Development Division. Amman, Jordan: Food and Agriculture Organization of the United Nations, 139–52.
- Tate, K.W., E.R. Atwill, N.M. McDougald & M.R. George, 2003. Spatial and temporal patterns of cattle feces deposition on rangeland. *Journal of Range Management* 56(5), 432–38.
- Ur, J.A., 2003. CORONA satellite photography and ancient road networks: a northern Mesopotamian case study. *Antiquity* 77(295), 102–15.
- Ur, J.A., 2017. WorldMap: hollow ways in northern Mesopotamia. *Harvard Dataverse* (<http://worldmap.harvard.edu/maps/14984>)
- Ur, J.A., P. Karsgaard & J. Oates, 2011. The spatial dimensions of early Mesopotamian urbanism: the Tell Brak Suburban Survey, 2003–2006. *Iraq* 73, 1–20.
- Wainwright, J., 2008. Can modelling enable us to understand the role of humans in landscape evolution? *Geoforum* 39(2), 659–74.
- Wainwright, J. & J.D.A. Millington, 2010. Mind, the gap in landscape-evolution modelling. *Earth Surface Processes and Landforms* 35(7), 842–55.
- Wilensky, U., 1999. *NetLogo*. Evanston (IL): Center for Connected Learning and Computer-Based Modeling, Northwestern University.
- Wilkinson, T.J., 1990. The development of settlement in the North Jazira between 7th and 1st millennia B.C. *Iraq* 52, 49–62.
- Wilkinson, T.J., 1993. Linear hollows in the Jazira, Upper Mesopotamia. *Antiquity* 67(256), 548–62.
- Wilkinson, T.J., 1994. The structure and dynamics of dry-farming states in Upper Mesopotamia. *Current Anthropology* 35(5), 483–520.
- Wilkinson, T.J., C. French, J.A. Ur & M. Semple, 2010. The geoarchaeology of route systems in northern Syria. *Geoarchaeology: An International Journal* 25(6), 745–71.
- Wirth, E., 1971. *Syrien, eine geographische Landeskunde*. Darmstadt: Wissenschaftliche Buchgesellschaft.

Fierce lions, angry mice and fat-tailed sheep

Animals have always been an integral part of human existence. In the ancient Near East, this is evident in the record of excavated assemblages of faunal remains, iconography and – for the later historical periods – texts. Animals have predominantly been examined as part of consumption and economy, and while these are important aspects of society in the ancient Near East, the relationships between humans and animals were extremely varied and complex.

Domesticated animals had great impact on social, political and economic structures – for example cattle in agriculture and diet, or donkeys and horses in transport, trade and war. Fantastic mythological beasts such as lion-headed eagles or Anzu-birds in Mesopotamia or Egyptian deities such as the falcon-headed god Horus were part of religious beliefs and myths, while exotic creatures such as lions were part of elite symboling from the fourth millennium BC onward. In some cases, animals also intruded on human lives in unwanted ways by scavenging or entering the household; this especially applies to small or wild animals. But animals were also attributed agency with the ability to solve problems; the distinction between humans and other animals often blurs in ritual, personal and place names, fables and royal ideology. They were helpers, pets and companions in life and death, peace and war. An association with cult and mortuary practices involves sacrifice and feasting, while some animals held special symbolic significance.

This volume is a tribute to the animals of the ancient Near East (including Mesopotamia, Anatolia, the Levant and Egypt), from the fourth through first millennia BC, and their complex relationship with the environment and other human and nonhuman animals. Offering faunal, textual and iconographic studies, the contributions present a fascinating array of the many ways in which animals influence human life and death, and explore new perspectives in the exciting field of human-animal studies as applied to this part of the world.

Editors:

Laerke Recht is Professor of Early Eastern Mediterranean Archaeology at the University of Graz, Austria, and a former Marie Skłodowska-Curie Fellow at the McDonald Institute of Archaeological Research, University of Cambridge. She is particularly interested in and has published on human-animal relations in the ancient Near East, Cyprus and Aegean.

Christina Tsouparopoulou is Assistant Professor in Near Eastern Archaeology at the Polish Academy of Sciences, Warsaw, Poland, Senior Research Associate and Marie Skłodowska-Curie Fellow at the McDonald Institute of Archaeological Research and Fellow of Wolfson College, Cambridge. She specializes in the material and textual culture of the Near East and Eastern Mediterranean in the third and second millennia BC.

*Published by the McDonald Institute for Archaeological Research,
University of Cambridge, Downing Street, Cambridge, CB2 3ER, UK.*

The McDonald Institute for Archaeological Research exists to further research by Cambridge archaeologists and their collaborators into all aspects of the human past, across time and space. It supports archaeological fieldwork, archaeological science, material culture studies, and archaeological theory in an interdisciplinary framework. The Institute is committed to supporting new perspectives and ground-breaking research in archaeology and publishes peer-reviewed books of the highest quality across a range of subjects in the form of fieldwork monographs and thematic edited volumes.

Cover design by Dora Kemp and Ben Plumridge.

ISBN: 978-1-913344-05-4

