



Universiteit
Leiden
The Netherlands

Relation of Cyclotron resonant energy and luminosity in a strongly magnetized neutron star GRO J1008-57 observed by Insight-HXMT

Chen, X.; Wang, W.; Tang, Y.M.; Ding, Y.Z.; Tuo, Y.L.; Mushtukov, A.A.; ... ; Qu, J.L.

Citation

Chen, X., Wang, W., Tang, Y. M., Ding, Y. Z., Tuo, Y. L., Mushtukov, A. A., ... Qu, J. L. (2021). Relation of Cyclotron resonant energy and luminosity in a strongly magnetized neutron star GRO J1008-57 observed by Insight-HXMT. *The Astrophysical Journal*, 919(1).
doi:10.3847/1538-4357/ac1268

Version: Not Applicable (or Unknown)
License: [Leiden University Non-exclusive license](#)
Downloaded from: <https://hdl.handle.net/1887/3256718>

Note: To cite this publication please use the final published version (if applicable).

Relation of cyclotron resonant energy and luminosity in a strongly magnetized neutron star GRO J1008-57 observed by Insight-HXMT

X. CHEN,^{1,2} W. WANG,^{1,2} Y. M. TANG,^{1,2} Y. Z. DING,^{1,2} Y. L. TUO,^{3,4} A. A. MUSHTUKOV,^{5,6,7} O. NISHIMURA,⁸ S. N. ZHANG,^{3,4} M. Y. GE,³
L. M. SONG,³ F. J. LU,³ S. ZHANG,³ AND J. L. QU³

¹*School of Physics and Technology, Wuhan University, Wuhan 430072, China*

²*WHU-NAOC Joint Center for Astronomy, Wuhan University, Wuhan 430072, China*

³*Key Laboratory of Particle Astrophysics, Institute of High Energy Physics, Chinese Academy of Sciences, Beijing 100049, China*

⁴*University of Chinese Academy of Sciences, Chinese Academy of Sciences, Beijing 100049, China*

⁵*Leiden Observatory, Leiden University, NL-2300RA Leiden, The Netherlands*

⁶*Space Research Institute of the Russian Academy of Sciences, Profsoyuznaya Str. 84/32, Moscow 117997, Russia*

⁷*Pulkovo Observatory, Russian Academy of Sciences, Saint Petersburg 196140, Russia*

⁸*Department of Electronics and Computer Science, Nagano National College of Technology, 716 Tokuma, Nagano 381-8550, Japan*

ABSTRACT

Cyclotron line scattering features are detected in a few tens of X-ray pulsars (XRP) and used as direct indicators of a strong magnetic field at the surface of accreting neutron stars (NSs). In a few cases, cyclotron lines are known to be variable with accretion luminosity of XRP. It is accepted that the observed variations of cyclotron line scattering features are related to variations of geometry and dynamics of accretion flow above the magnetic poles of a NS. A positive correlation between the line centroid energy and luminosity is typical for sub-critical XRP, where the accretion results in hot spots at the magnetic poles. The negative correlation was proposed to be a specific feature of bright super-critical XRP, where radiation pressure supports accretion columns above the stellar surface. Cyclotron line in spectra of Be-transient X-ray pulsar GRO J1008-57 is detected at energies from $\sim 75 - 90$ keV, the highest observed energy of cyclotron line feature in XRP. We report the peculiar relation of cyclotron line centroid energies with luminosity in GRO J1008-57 during the Type II outburst in August 2017 observed by Insight-HXMT. The cyclotron line energy was detected to be negatively correlated with the luminosity at $3.2 \times 10^{37} \text{ erg s}^{-1} < L < 4.2 \times 10^{37} \text{ erg s}^{-1}$, and positively correlated at $L \gtrsim 5 \times 10^{37} \text{ erg s}^{-1}$. We speculate that the observed peculiar behavior of a cyclotron line would be due to variations of accretion channel geometry.

Keywords: X-rays: binaries – X-rays: stars – neutron stars – Be stars; stars: individual: GRO J1008-57

1. INTRODUCTION

Classical X-ray pulsars (XRP) are accreting strongly magnetized neutron stars (NSs) in close binary systems (see [Walter et al. 2015](#) for review). The magnetic field strength in these objects is known to be $\sim 10^{12}$ G. Strong field on a NSs in XRP affects the geometry of accretion flow. The accretion disc of stellar wind from a companion star is interrupted at certain distance from a NS (see [Lai 2014](#) for review), than the accretion flow is directed by magnetic field towards the small regions located close to the magnetic poles of a NS. There the kinetic energy of the material turns into heat and is emitted in the form of X-ray radiation. A strong magnetic field in the vicinity of the NS surface quantizes the energy of electrons (see, e.g., [Harding & Lai 2006](#)), and because of that, the Compton scattering and free-free absorption become resonant at the cyclotron energy

$$E_{\text{cyc}} \approx 11.6 \left(\frac{B}{10^{12} \text{ G}} \right) \text{ keV}, \quad (1)$$

and its harmonics, where B is the field strength ([Daugherty & Harding 1986](#); [Harding & Daugherty 1991](#); [Mushtukov et al. 2016](#)). The resonances result in cyclotron scattering features in the energy spectra of XRP. Because the cyclotron energy is proportional

to the magnetic field strength in the line forming regions, the detection of cyclotron resonant scattering features (CRSFs) in XRP provides a unique opportunity to measure magnetic field strength of accreting NSs (Truemper et al. 1978). At present, there are more than 30 XRP with detected cyclotron scattering features (see Staubert et al. 2019 for review). The X-ray spectrum of GRO J1008-57 shows the highest fundamental cyclotron absorption line centroid energy among all known XRP: the line centroid energy is at $\sim 74 - 90$ keV, which points to the B -field strength $\sim 8 \times 10^{12}$ G (Wang 2014a; Yamamoto et al. 2014; Bellm et al. 2014; Ge et al. 2020).

Since the discovery of the cyclotron resonant scattering features in XRP (Truemper et al. 1978), it has been found that the centroid energy of the cyclotron features could vary with the accretion luminosity, pulsation phase and on long (years) time-scales. In particular, the long-time scale reduction and evolution of the line centroid energy was detected in Her X-1 (Staubert et al. 2017; Xiao et al. 2019).

The variations of cyclotron line energy with accretion luminosity has been detected in a number of X-ray transients including V0332+53 (Tsygankov et al. 2006, 2010), A0535+26 (Caballero et al. 2007), Vela X-1 (Fürst et al. 2014; Wang 2014b), GX 304-1 (Klochkov et al. 2012; Rothschild et al. 2017), Cep X-4 (Vybornov et al. 2017), and 4U 0115+63 (Mihara et al. 2004; Tsygankov et al. 2007; Li et al. 2012). It is remarkable, that the sources of relatively low mass accretion rates show positive correlation between the line centroid energy and luminosity, while the sources of relatively high mass accretion rates show the negative correlation. In one source - V0332+53 (Doroshenko et al. 2017) - both correlations were reported. In both transients the positive correlation was detected at low luminosities and the negative one at high luminosity state. Cusumano et al. (2016) shows that the relation between the line centroid energy and accretion luminosity is not always strict and the same source can show different line centroid energies at the same apparent luminosity (this phenomenon was detected only in one source V0332+53 at present).

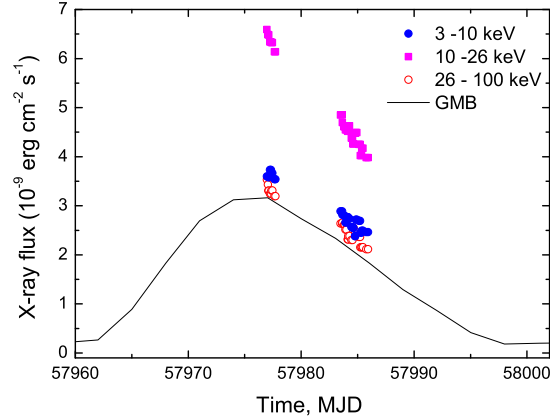
Cyclotron lines were shown to be variable with the phase of pulsations in a few XRP (Lutovinov et al. 2015, 2017; Tsygankov et al. 2016, 2019). Recently, it has been found that the cyclotron line can be pulse-phase-transient and appear only at some phase of pulsations in XRP (Molkov et al. 2019).

The variability of the cyclotron line centroid energy in the spectra of XRP is considered to be related to the geometry of accretion flow in close proximity to the surface of a NS. The geometry of the emitting region is related to the mass accretion rate. At low mass accretion rates, the radiation pressure is small, and one expects hot spots at the NS surface. At high mass accretion rates, the radiation pressure is high enough to stop accreting material above the NS surface. In this case, the accretion column supported by radiation pressure and confined by a strong magnetic field arises above the stellar surface (Basko & Sunyaev 1976; Wang & Frank 1981; Mushtukov et al. 2015a). The luminosity separating these two accretion regimes is called the “critical” luminosity L_{crit} . The critical luminosity was shown to be dependent on the magnetic field strength (Mushtukov et al. 2015b). The dynamics of the cyclotron line was shown to be dependent on the luminosity state of XRP (see Staubert et al. 2019 for review). In particular, the positive correlation between the cyclotron line centroid energy and accretion luminosity is considered to be typical for sub-critical XRP (Staubert et al. 2007; Klochkov et al. 2012; Fürst et al. 2014), while the negative correlation was detected in bright super-critical sources (Mihara et al. 2004; Tsygankov et al. 2006; Boldin et al. 2013). At the same time, there are some sources without any observed correlation between the cyclotron line energy and luminosity (Caballero et al. 2007). Several theoretical models are aiming to explain the variability of a cyclotron line. The positive correlation was explained by the Doppler effect in accretion channel (Mushtukov et al. 2015c) and alternatively by the onset of collisionless shock above hot spots at low mass accretion rates (Shapiro & Salpeter 1975; Rothschild et al. 2017). The negative correlation was explained by the variations of accretion column height above the NS surface. Different models consider different locations of a line forming region at super-critical mass accretion rates, which might be a radiation dominated shock on top of accretion column (Becker et al. 2012) or NS surface (see e.g., Poutanen et al. 2013; Lutovinov et al. 2015; Mushtukov et al. 2018), which reprocesses a large fraction of beamed radiation from the accretion column. Alternatively, Nishimura (2014) argued that some variations of cyclotron line centroid energy could be related to the changes of a beam pattern. By considering the structure of an accretion column in two dimensions, Nishimura (2019) suggested that the line-forming region is a region around an accretion mound in which the bulk velocity in the line-forming region can be considerably different from that in the continuum-forming region which is assumed to be inside an accretion mound, so that the variation of E_{cyc} results from the motion of the accretion mound in the different luminosity ranges.

The Chinese X-ray telescope Insight-HXMT observed the Be/X-ray pulsar GRO J1008-57 during the Type II outburst in August 2017. So that we can study the spectral variations of the X-ray pulsar with different luminosities. In §2, The observations of Insight-HXMT on the source GRO J1008-57 was presented in §2, and the data and spectral analysis were shown in §3. Based on the spectral analysis, the relation between the cyclotron line energy and X-ray luminosity in GRO J1008-57 was studied in §4. In

Table 1. The Insight-HXMT data information used in the analysis taken from the HXMT website: <http://www.hxmt.org>.

Obs. ID	Obs. date Start(UTC)	Obs. date End(UTC)	Duration (s)	MJD
P0114520001	2017-08-11 21:58:37	2017-08-12 20:25:06	80789	57976-57977
P0114520003	2017-08-18 11:30:22	2017-08-20 22:32:32	212530	57983-57985

**Figure 1.** The X-ray light curves of GRO J1008-57 in August 2017. The solid curves obtained from the monitoring data of Fermi/GBM, showed the X-ray outburst lasting about one month. Insight-HXMT has carried out the pointing observations for the outburst, the light curves were presented in three energy bands: 3 - 10 keV, 10 - 26 keV, 26 - 100 keV.

§5, we presented possible scenarios like the variation of the accretion flow geometry to explain the relationship. Finally, a brief summary was given in §6.

2. OBSERVATIONS OF INSIGHT-HXMT

Insight-HXMT consists of three main instruments: High Energy X-ray Telescope (HE, [Liu et al. 2020](#)) covering the energy range of 20 - 250 keV with the detection area of 5000 cm², Medium Energy X-ray Telescope (ME, [Cao et al. 2020](#)) covering the energies of 5 - 30 keV with a total detection area of 952 cm², and Low Energy X-ray Telescope (LE, [Chen et al. 2020](#)) covering 1 - 15 keV with the detection area of 384 cm². There are three types of Field of View (FoV): 1° × 6° (FWHM, the small FoV), 6° × 6° (the large FoV), and the blind FoV used to estimate the particle induced instrumental background. Since its launch, Insight-HXMT went through a series of performance verification tests by observing blank sky, standard sources and sources of interest. These tests showed that the entire satellite works smoothly and healthily, and have allowed for the calibration and estimation of the instruments background ([Li et al. 2020](#)). The Insight-HXMT Data Analysis Software Package (HXMTDAS) V2.02 was used in this work.

GRO J1008-57 was observed during the outburst in August 2017 with the observation time of 292 ks (see Table 1). For the science analysis, we used the following data selection criteria: (1) pointing offset angle < 0.1°; (2) pointing direction above Earth > 10°; (3) geomagnetic cut-off rigidity value > 8; (4) time since SAA passage > 300 s and time to next SAA passage > 300 s; (5) for LE observations, pointing direction above bright Earth > 30°. Then we performed the standard data analysis following the official user guide (see [Ge et al. 2020](#)). The observational information of the Insight-HXMT for the outburst is shown in Table 1.

In Fig. 1, the X-ray light curves of GRO J1008-57 monitored by Insight-HXMT and Fermi/GBM are presented. The GBM light curves show the type II outburst lasting about one month, the pointing observations performed by Insight-HXMT cover the decay phase of the outburst from the peak luminosity range to about the half of the peak. Thus, the good spectral analysis ability of the Insight-HXMT data covering 1 - 200 keV can for the first time help us to study the spectral variations of GRO J1008-57, including the 90 keV absorption line feature with the decay of the X-ray luminosity, especially probe the variation patterns of the cyclotron line centroid energy with X-ray luminosity. In the spectral analysis, we have used the energy bands 3 - 10 keV (LE), 10 - 26 keV (ME), and 26 - 110 keV (HE), with a systematic error of 1.5% for LE/ME/HE data.

3. SPECTRAL ANALYSIS

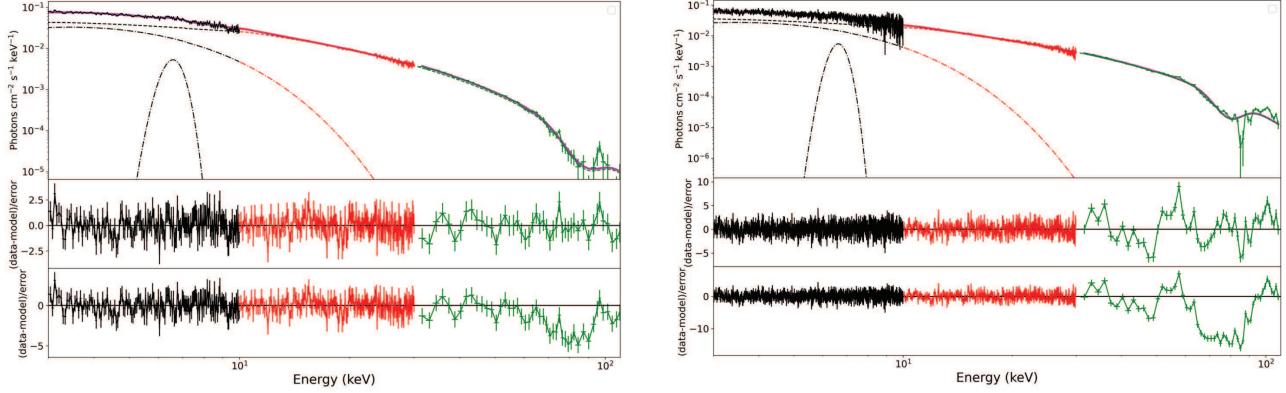


Figure 2. The spectrum examples of GRO J1008-57 from 3 - 110 keV obtained by Insight-HXMT from the peak to decay phase of the outburst. The left panel showed the spectrum around the peak of the outbursts noted with Obs ID 101 in Table 2; the right panel was the spectrum during the decay phase noted with Obs ID 34 in Table 2. For both spectra we have showed the residuals based on the spectral fitting without the cyclotron line component (central panel) and with the cyclotron line (bottom panel), respectively. The spectra were fitted by the Xspec model of $\text{power}^*\text{highcutoff}^*\text{gabs}+\text{bbody}+\text{gaussian}$.

Here we have used the Xspec package version 12.10.1 in the spectral analysis work of GRO J1008-57. The spectra of an accreting XRP can be generally described by a power-low model plus the high energy cutoff. Thus, for the X-ray continuum spectral fitting from 3 – 110 keV, we have used a power-law model plus the high energy cutoff ($\text{power}^*\text{highcutoff}$) for the first fit. There existed the count excesses below ~ 5 keV, we added the thermal component (bbody) to fit the soft X-ray band. After the fittings, the Fe $K\alpha$ emission line around 6.4 keV and the absorption feature around 70 -90 keV appeared in the residuals. We could add the gaussian emission line to fit the Fe $K\alpha$ line (~ 6.4 keV). For the absorption feature above 70 keV, we attributed it to the cyclotron resonant scattering feature, then the model gabs was applied to fit the absorption line features in all observed spectra.

We adopted Monte Carlo Markov Chain (MCMC) method to estimate the errors of the spectral parameters. During the primary run, each chain was generated using 200000 steps (20 walkers) with the first 10000 steps being burnt. During the peak of the outburst, the line width of the cyclotron absorption line was constrained to be around $\sim 14 - 16$ keV which is still consistent with the early HXMT-Insight result by Ge et al. (2020). In the decay phase, the flux became lower, so that the line width can be constrained only for one or two pointing observations, and for the other observations, the line width could not be well constrained. Then to improve the statistics of the spectral fitting in low luminosity range, we combined two neighboring observation IDs into one group for the decay phase, and carried out the spectral fitting again. The cyclotron lines were also detected in the combined spectral analysis, and the line width could be constrained at $\sim 8 - 11$ keV. All the spectral parameters with the cyclotron line detection for our observations are collected and presented in the Table 2.

In Fig. 2, we have shown two spectra as the examples of the spectral fitting results. From the left panel to the right one of Fig. 2, the spectra of GRO J1008-57 at the peak and the decay phases of the outburst are presented separately. The residuals are shown for both the cases without the cyclotron line and with the absorption line component. We also check the possible effect of the different continuum models on the cyclotron line fitting. The NPEX model which is a sum of positive and negative cutoff power-law spectral models (Mihara 1995) could fit the continuum, the cyclotron absorption features also appeared in the residuals (also see Ge et al. 2020), and the determined line energy was consistent with that by the high energy cutoff model. The other continuum models, like BMC, CompTT models cannot fit the continuum well, thus we did not consider them in this work.

4. CYCLOTRON LINE ENERGY VERSUS X-RAY LUMINOSITY IN GRO J1008-57

The possible variation of the cyclotron line centroid energy in GRO J1008-57 was also reported by Suzaku observations during the 2012 outburst (Yamamoto et al. 2014), the line energy decreased toward higher X-ray luminosity, however, only three data points were very limited. Based on the spectral analysis results in §3, we can collect the fitted line centroid energy and obtained X-ray flux from 3- 100 keV, then study the variation of the cyclotron line energy with X-ray luminosity. In Fig. 3, we presented the relation of the fundamental line centroid energy (E_{cyc}) versus the X-ray luminosity (L_x) of GRO J1008-57, where the X-ray luminosity was calculated based on the estimated distance of 5.8 kpc (Riquelme et al. 2012) and the determined X-ray flux from 3 - 100 keV during the outburst (also see Table 2). The relationships between E_{cyc} and X-ray luminosity are complicated and

Table 2. The spectral parameters for the spectra with the cyclotron line detections in GRO J1008-57. During the decay phase, the combined spectra (two pointing observations combined into one Obs ID, i.e., 303 plus 304 as 34, 311 plus 312 as 1122) are fitted. Flux is given in range of 3-100 keV, the corresponding luminosity is also presented with the distance of 5.8 kpc.

Obs ID	kT (keV)	Γ	E_{cut} (keV)	E_{fold} (keV)	E_{cyc} (keV)	σ (keV)	Strength	E_{Fe} (keV)	σ_{Fe} (keV)	Flux (erg cm ⁻² s ⁻¹)	L_x (erg s ⁻¹)	reduced χ^2
101	1.9 ± 0.1	0.4 ± 0.1	10.8 ± 0.3	14.6 ± 0.4	84.8 ± 1.9	13.9 ± 2.9	49.6 ± 6.1	6.51 ± 0.04	0.25 ± 0.05	(1.38 ± 0.02) × 10 ⁻⁸	(5.52 ± 0.04) × 10 ³⁷	0.905
102	2.0 ± 0.1	0.6 ± 0.1	11.1 ± 0.4	16.9 ± 0.4	86.1 ± 2.4	15.1 ± 3.3	47.5 ± 10.5	6.52 ± 0.04	0.21 ± 0.05	(1.38 ± 0.02) × 10 ⁻⁸	(5.52 ± 0.04) × 10 ³⁷	0.996
103	1.9 ± 0.1	0.5 ± 0.1	13.1 ± 0.4	15.6 ± 0.4	91.8 ± 4.9	15.8 ± 3.3	66.1 ± 11.9	6.48 ± 0.04	0.23 ± 0.05	(1.49 ± 0.02) × 10 ⁻⁸	(5.96 ± 0.04) × 10 ³⁷	0.933
104	1.9 ± 0.1	0.5 ± 0.1	10.9 ± 0.4	16.6 ± 0.4	93.5 ± 5.8	15.5 ± 3.9	85.6 ± 21.5	6.50 ± 0.04	0.21 ± 0.04	(1.44 ± 0.02) × 10 ⁻⁸	(5.76 ± 0.04) × 10 ³⁷	1.012
105	2.1 ± 0.1	0.7 ± 0.1	17.1 ± 0.6	19.2 ± 0.8	86.6 ± 2.5	15.3 ± 3.7	73.3 ± 10.1	6.55 ± 0.05	0.23 ± 0.06	(1.42 ± 0.02) × 10 ⁻⁸	(5.68 ± 0.04) × 10 ³⁷	0.947
106	2.0 ± 0.1	0.5 ± 0.1	13.1 ± 0.6	16.9 ± 1.1	82.5 ± 3.4	14.3 ± 3.9	68.5 ± 20.2	6.59 ± 0.05	0.13 ± 0.06	(1.33 ± 0.02) × 10 ⁻⁸	(5.31 ± 0.04) × 10 ³⁷	0.959
12	1.6 ± 0.1	0.6 ± 0.1	11.9 ± 0.5	15.8 ± 0.5	76.1 ± 2.6	8.1 ± 3.1	16.6 ± 7.2	6.42 ± 0.07	0.16 ± 0.08	(1.03 ± 0.02) × 10 ⁻⁹	(4.15 ± 0.04) × 10 ³⁷	1.185
34	1.7 ± 0.1	0.7 ± 0.1	11.2 ± 0.5	17.1 ± 0.6	78.9 ± 2.9	8.9 ± 2.9	26.1 ± 8.2	6.62 ± 0.07	0.28 ± 0.09	(1.00 ± 0.02) × 10 ⁻⁹	(4.01 ± 0.04) × 10 ³⁷	1.091
56	1.6 ± 0.1	0.7 ± 0.1	11.0 ± 0.4	16.3 ± 0.7	80.7 ± 3.1	9.5 ± 2.9	43.5 ± 14.4	6.66 ± 0.07	0.33 ± 0.09	(9.8 ± 0.2) × 10 ⁻⁹	(3.89 ± 0.04) × 10 ³⁷	1.203
78	1.8 ± 0.1	0.5 ± 0.1	13.7 ± 0.9	15.4 ± 0.7	85.9 ± 3.8	10.2 ± 3.1	51.4 ± 12.8	6.46 ± 0.07	0.15 ± 0.08	(9.3 ± 0.2) × 10 ⁻⁹	(3.77 ± 0.04) × 10 ³⁷	1.118
910	1.5 ± 0.1	0.5 ± 0.1	7.9 ± 1.4	14.9 ± 1.3	84.2 ± 4.2	10.1 ± 3.5	21.2 ± 10.9	6.51 ± 0.07	0.14 ± 0.07	(9.4 ± 0.2) × 10 ⁻⁹	(3.81 ± 0.04) × 10 ³⁷	1.147
1112	1.6 ± 0.1	0.6 ± 0.1	10.9 ± 0.9	15.6 ± 1.4	83.6 ± 4.6	9.7 ± 3.5	50.9 ± 12.3	6.47 ± 0.09	0.18 ± 0.07	(9.3 ± 0.2) × 10 ⁻⁹	(3.77 ± 0.04) × 10 ³⁷	1.164
1314	1.7 ± 0.1	0.8 ± 0.1	10.9 ± 0.4	15.6 ± 0.4	88.2 ± 3.9	10.1 ± 3.2	57.5 ± 14.6	6.60 ± 0.11	0.33 ± 0.11	(8.4 ± 0.2) × 10 ⁻⁹	(3.39 ± 0.04) × 10 ³⁷	1.232
1516	1.7 ± 0.1	0.4 ± 0.1	11.0 ± 0.4	14.4 ± 0.4	86.7 ± 3.8	10.0 ± 3.2	20.4 ± 5.6	6.53 ± 0.10	0.19 ± 0.08	(8.7 ± 0.2) × 10 ⁻⁹	(3.53 ± 0.04) × 10 ³⁷	1.203
1718	1.6 ± 0.1	0.7 ± 0.1	11.4 ± 0.4	16.4 ± 0.5	80.2 ± 3.5	9.1 ± 3.3	21.0 ± 5.9	6.43 ± 0.11	0.13 ± 0.06	(8.9 ± 0.2) × 10 ⁻⁹	(3.60 ± 0.04) × 10 ³⁷	1.215

different from the relations found in other accreting XRPCs. In Fig. 3, the line centroid energy increases from 80 keV to 90 keV in X-ray luminosity range above $\sim 5 \times 10^{37}$ erg/s; but in the lower X-ray luminosity range of $(3.2 - 4.2) \times 10^{37}$ erg/s, the fundamental line centroid energy varies from ~ 90 to 75 keV.

From the Insight-HXMT observations, the fundamental cyclotron line energy of GRO J1008-57 was determined to be $\sim 75 - 90$ keV, and the magnetic field value higher than $\sim 7 \times 10^{12}$ G, which suggests a critical luminosity of $L_{\text{crit}} > 9 \times 10^{37}$ erg s⁻¹. The observed X-ray luminosity ranges of GRO J1008-57 during the outburst were below the critical luminosity. Generally for known XRPCs, the variation patterns of the cyclotron line energy show the positive correlation with X-ray luminosity below L_{crit} . Thus we would expect a positive correlation of $E_{\text{cyc}} - L_x$ in case of GRO J1008-57 using our observations. Thus, we at first used the single power-law function to fit the data points to check the validity of a positive correlation in this source.

For the cyclotron line detection results by the Insight-HXMT observations, we can first fit all the available data points with a function of the single power law form (see Fig. 3). The best fitted function is given by $E_{\text{cyc}} \propto L_x^{0.09 \pm 0.06}$ with the Pearson coefficient of 0.407, and reduce χ^2 of 1.893 (13 degrees of freedom, hereafter d.o.f). If we consider it as a positive correlation, then the relation should be very weak.

For further analyzing the $E_{\text{cyc}} - L_x$ relationship in GRO J1008-57, we then fit the data points in two X-ray luminosity ranges. From the X-ray luminosity range of $(3 - 5) \times 10^{37}$ erg/s (see the left panel of Fig. 4), we fitted the data points with a single power-law function, and obtained a best fitted function of $E_{\text{cyc}} \propto L_x^{-0.67 \pm 0.15}$ with the Pearson coefficient of -0.856 , and reduce χ^2 of 1.326 (7 d.o.f). This best fit suggests a negative correlation between $E_{\text{cyc}} - L_x$ when $L_x \sim (3.2 - 4.2) \times 10^{37}$ erg/s. For the higher X-ray luminosity ranges of $> 5 \times 10^{37}$ erg/s (see the right panel of Fig. 4), the best fitted function is given by $E_{\text{cyc}} \propto L_x^{0.96 \pm 0.25}$ with the Pearson coefficient of 0.885, and reduce χ^2 of 1.126 (4 d.o.f). This positive correlation is much more significant than that with all observed data covering both low and high luminosity ranges.

Thus as a summary, from the X-ray luminosity range of $(3.2 - 4.2) \times 10^{37}$ erg/s, the fundamental line centroid energy varies from 90 to 75 keV, showing a negative correlation of $E_{\text{cyc}} - L_x$, which also confirmed the marginal result found in Yamamoto et al. (2014). While in higher luminosity range above $\sim 5 \times 10^{37}$ erg/s, the line centroid energy increases from 80 keV to 90 keV, thus showing a positive correlation of $E_{\text{cyc}} - L_x$.

5. DISCUSSION

5.1. Accretion flow geometry and cyclotron line centroid energy

The details of spectra formation and cyclotron line variability with the luminosity and pulsation phase are determined by the accretion state of XRP. The critical luminosity L_{crit} is the minimal luminosity which is sufficiently high to stop the accretion flow above the stellar surface due to the radiation pressure (Basko & Sunyaev 1976; Mushtukov et al. 2015b). The critical luminosity can be roughly estimated as

$$L_{\text{crit}} = 4 \times 10^{36} \frac{m}{R_6} \left(\frac{l}{2 \times 10^5 \text{ cm}} \right) \frac{\sigma_{\text{T}}}{\sigma_{\text{eff}}} \text{ erg s}^{-1}, \quad (2)$$

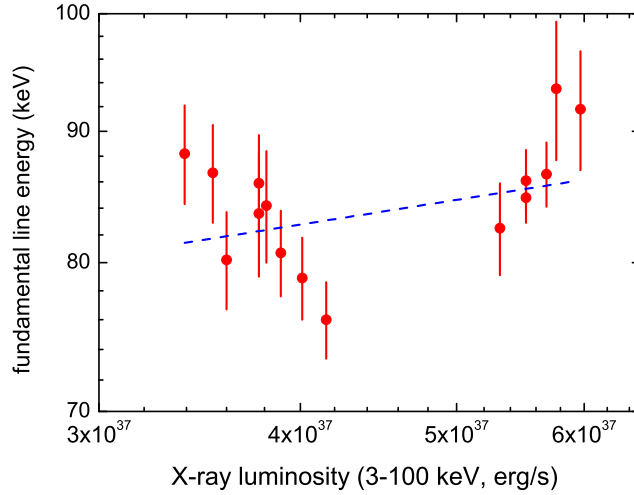


Figure 3. The fundamental line centroid energy versus X-ray luminosity (3 - 100 keV) of GRO J1008-57 in the outburst. The dashed line shows the best fitting power-law function when we assume the positive relation between E_{cyc} and L_x . The data points are plotted in the logarithmic scale for both X and Y axes.

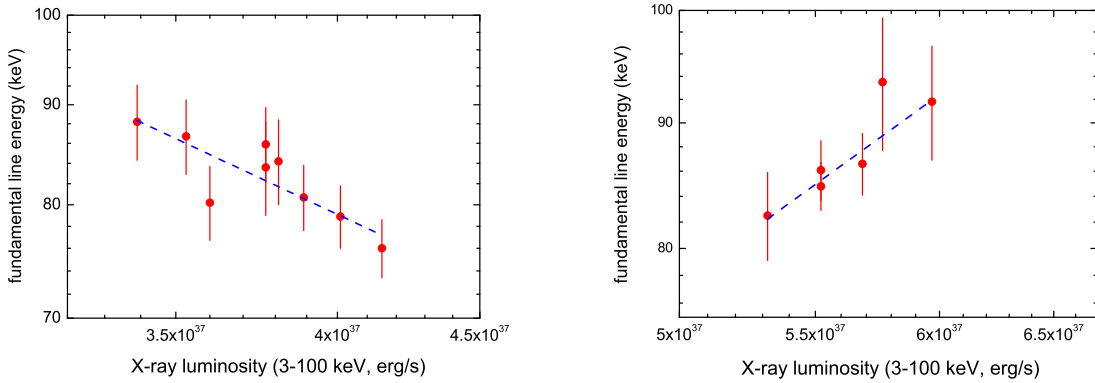


Figure 4. The fundamental line centroid energy versus X-ray luminosity (3 - 100 keV) of GRO J1008-57 for two luminosity ranges. The dashed lines show the best fitting functions with a single power-law form. The left panel presents the negative relation between $E_{\text{cyc}} - L_x$ below the luminosity of $\sim 4.2 \times 10^{37} \text{ erg s}^{-1}$; the right panel presents the positive relation between $E_{\text{cyc}} - L_x$ above the luminosity of $5 \times 10^{37} \text{ erg s}^{-1}$. The data points are plotted in the logarithmic scale for both X and Y axes. See details in the text.

where m is a NS mass in units of solar masses, R_6 is the NS radius in units of 10^6 cm , l is the length of an accretion channel base at the NS surface, σ_T is the cross section due to Thomson scattering and σ_{eff} as the function of the magnetic field is the effective scattering cross section in a strong magnetic field (see e.g., [Basko & Sunyaev 1976](#)). Below the critical luminosity, the accretion process results in formation of hot spots at the magnetic poles of a NS. Above the critical luminosity, the accretion process results in formation of accretion columns confined by a strong magnetic field and supported by radiation pressure ([Inoue 1975](#); [Basko & Sunyaev 1976](#); [Wang & Frank 1981](#)). The critical luminosity is known to be dependent on the magnetic field strength at the NS surface ([Becker et al. 2012](#); [Mushtukov et al. 2015b](#)). The cyclotron line in GRO J1008-57 is detected at $E > 70 \text{ keV}$, which points to the surface magnetic field strength $B \gtrsim 7 \times 10^{12} \text{ G}$. Because of that, the critical luminosity of this source is expected to be $L_{\text{crit}} > 9 \times 10^{37} \text{ erg s}^{-1}$ (see e.g., [Becker et al. 2012](#); [Mushtukov et al. 2015b](#)). Thus, the luminosity range of $(3 - 7) \times 10^{37} \text{ erg s}^{-1}$ in GRO J1008-57 considered in our paper is expected to be below the critical luminosity, and one expects hot spots in the magnetic pole regions.

The radiation pressure at sub-critical luminosity is not enough to stop the accretion flow above the stellar surface, but still it affects the velocity of the accreting material reducing it down to a certain level below the free fall velocity. The resonant scattering

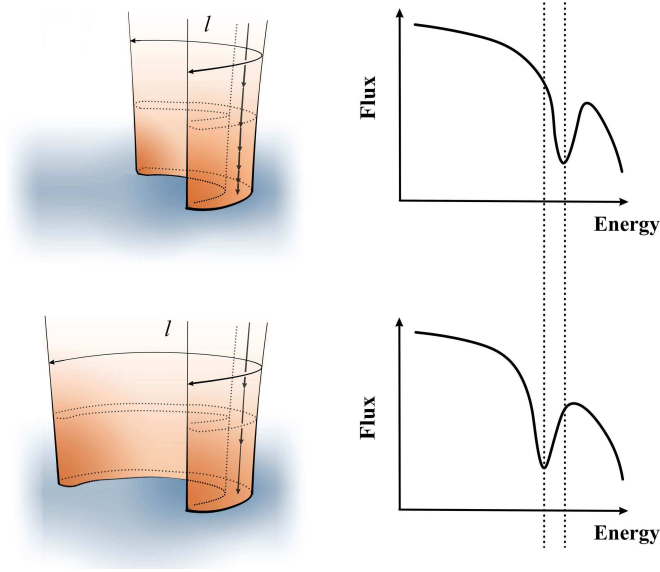


Figure 5. The effectiveness of accretion flow braking is affected by the geometry of accretion flow. The smaller area of accretion channel base at the fixed mass accretion rate results in larger X-ray energy flux in the vicinity of the stellar surface, and, therefore, in stronger radiation pressure. Because the velocity of accreting material near the NS surface influences the cyclotron line centroid energy, the variations of accretion channel geometry affects the displacement of the line in X-ray energy spectrum.

of X-ray photons by the accreting material results in formation of a cyclotron resonant scattering feature redshifted in respect to the local cyclotron line energy. The shift of a cyclotron scattering feature depends on the accretion flow velocity and therefore on the accretion luminosity of XRPs (Mushtukov et al. 2015c): the higher the luminosity, the stronger the radiation pressure, the smaller the accretion flow velocity, the smaller the redshift, and the larger the observed line centroid energy. That is the basic physical picture proposed by Mushtukov et al. (2015c) to explain observed positive correlation between the cyclotron energy and luminosity in sub-critical XRPs.

The influence of the radiation pressure on the accretion flow dynamics is determined by the X-ray energy flux near the surface of accreting NS and the braking distance (see Fig. 5). The braking distance is close to the geometrical thickness of accretion channel d because at height $h > d$ the X-ray energy flux along magnetic field lines drops sharply due to the delusion effect (Lyubarskii & Syunyaev 1982; Becker 1998). The X-ray energy flux above the hot spots is determined by the total accretion luminosity, hot spot area $S = ld$ and height h above the surface (see Mushtukov et al. 2015c):

$$F(h) \approx \frac{L}{2ld} \frac{1}{1 + (h/d)^2}. \quad (3)$$

The length of accretion channel at the stellar surface can be roughly estimated as

$$l \sim \xi R^{3/2} R_m^{-1/2} \text{ cm}, \quad (4)$$

while its geometrical thickness

$$d \sim 0.5 H_m R^{3/2} R_m^{-3/2} \text{ cm}, \quad (5)$$

where

$$R_m \approx 1.3 \times 10^8 B_{12}^{4/7} L_{37}^{-2/7} m^{1/7} R_6^{10/7} \text{ cm} \quad (6)$$

is the inner radius of accretion disc, L_{37} is the accretion luminosity in units of $10^{37} \text{ erg s}^{-1}$, B_{12} is magnetic field strength at the poles of a NS in units of 10^{12} G , $H_m \ll R_m$ is the geometrical thickness of the disc at the inner radius, and $\xi \in (0; 2\pi]$ is the azimuthal angle from which magnetized NS in XRPs collects material from the disc at the inner radius (see, e.g., Frank et al. 2002).

The variations of the length l (if any) affect the area of hot spots and result in variations of X-ray energy flux (Eq. 3), the braking effectiveness and the critical luminosity (Eq. 2). In particular, the decrease of accretion channel length leads to increase of the energy flux and makes the braking of material more effective.

We argue that the observed complicated behaviour of a cyclotron line centroid energy in GRO J1008-57 (see Fig. 3) can be a result of variations of accretion channel geometry at luminosity $L \lesssim 4.5 \times 10^{37} \text{ erg s}^{-1}$. Decrease of a factor ξ in (Eq. 4) can result in increase of local X-ray energy flux even in the case of total luminosity reduction. Thus, the positive correlation typical for sub-critical mass accretion rates can turn into the negative one. The observed switch of positive correlation into the negative one at low mass accretion rates can be explained if the length of the accretion channel base drops by a factor of ~ 1.7 with the decrease of the accretion mass. Because the radius of the open rings at the NS surface is small, the variation of the ring's length will not significantly affect the beam pattern and the observed pulse profile (Ge et al. 2020; Wang et al. 2021).

5.2. Other possible scenarios

In the framework of the model in §5.1, where the cyclotron line forming in accretion channel shifts with the accretion luminosity due to the variations of velocity of accreting material, the line centroid energy is always redshifted in respect to the actual cyclotron line energy. However, one can expect that at extremely low mass accretion rates the optical thickness of accretion channel is small even for photons experiencing resonant scattering. In this case, the cyclotron line forms in the atmosphere of a NS and does not experience redshift. Therefore, the positive correlation between the line centroid energy and luminosity at sub-critical mass accretion rates is expected to turn into the negative one at sufficiently low luminosity. The switch in the cyclotron line behaviour is expected when the luminosity

$$L \lesssim \left(\frac{\sigma_{\text{T}}}{\sigma_{\text{res}}} \right) L_{\text{crit}} < 10^{-4} L_{\text{crit}}, \quad (7)$$

where σ_{res} is the scattering cross section at the resonance and taken to be $\sigma_{\text{res}} > 10^4 \sigma_{\text{T}}$ (Mushtukov et al. 2016). In the particular case of GRO J1008-57 the estimation (Eq. 7) shows that the switch of cyclotron line behaviour due to reduction of optical thickness is expected at $L < 10^{34} \text{ erg s}^{-1}$. Therefore, we can exclude this scenario from consideration.

6. SUMMARY

We report both the negative and positive correlations between the cyclotron line centroid energies and X-ray luminosity in the Be/X-ray pulsar GRO J1008-57 observed by Insight-HXMT during the outburst in 2017. Because of an extremely strong magnetic field in GRO J1008-57, the XRP is likely in the sub-critical regime of accretion when the radiation pressure at the NS surface is not sufficiently high to stop material above the magnetic poles of a star (Basko & Sunyaev 1976; Mushtukov et al. 2015b). Positive correlation between the line centroid energy and X-ray energy flux detected in the luminosity range $5 \times 10^{37} \text{ erg s}^{-1} < L < 7 \times 10^{37} \text{ erg s}^{-1}$ is typical for sub-critical XRPs (see, e.g., Staubert et al. 2007; Mushtukov et al. 2015c; Rothschild et al. 2017). However, the negative correlation observed in GRO J1008-57 in the range $3.2 \times 10^{37} \text{ erg s}^{-1} < L < 4.2 \times 10^{37} \text{ erg s}^{-1}$ is peculiar for low-luminosity states of accreting strongly magnetized NSs and observed at sub-critical luminosities for the first time. GRO J1008-57 shows the positive correlation turning into the negative one with the decrease of the mass accretion rate. More observational and theoretical work are needed in future.

ACKNOWLEDGEMENTS

We are very grateful to the referee for the useful suggestions to improve the manuscript. This work was supported by the NSFC (U1838103, 11622326, U1838201, U1838202), the National Program on Key Research and Development Project (Grants No. 2016YFA0400803, 2016YFA0400800), and the Netherlands Organization for Scientific Research Veni Fellowship (AAM). This work made use of data from the Insight-HXMT mission, a project funded by China National Space Administration (CNSA) and the Chinese Academy of Sciences (CAS).

REFERENCES

- Basko, M. M., & Sunyaev, R. A. 1976, MNRAS, 175, 395, doi: [10.1093/mnras/175.2.395](https://doi.org/10.1093/mnras/175.2.395)
- Becker, P. A. 1998, ApJ, 498, 790, doi: [10.1086/305568](https://doi.org/10.1086/305568)
- Becker, P. A., Klochov, D., Schönherr, G., et al. 2012, A&A, 544, A123, doi: [10.1051/0004-6361/201219065](https://doi.org/10.1051/0004-6361/201219065)
- Bellm, E. C., Fürst, F., Pottschmidt, K., et al. 2014, ApJ, 792, 108, doi: [10.1088/0004-637X/792/2/108](https://doi.org/10.1088/0004-637X/792/2/108)
- Boldin, P. A., Tsygankov, S. S., & Lutovinov, A. A. 2013, Astronomy Letters, 39, 375, doi: [10.1134/S1063773713060029](https://doi.org/10.1134/S1063773713060029)
- Caballero, I., Kretschmar, P., Santangelo, A., et al. 2007, A&A, 465, L21, doi: [10.1051/0004-6361:20067032](https://doi.org/10.1051/0004-6361:20067032)
- Cao, X., Jiang, W., Meng, B., et al. 2020, Science China Physics, Mechanics, and Astronomy, 63, 249504, doi: [10.1007/s11433-019-1506-1](https://doi.org/10.1007/s11433-019-1506-1)

- Chen, Y., Cui, W., Li, W., et al. 2020, *Science China Physics, Mechanics, and Astronomy*, 63, 249505, doi: [10.1007/s11433-019-1469-5](https://doi.org/10.1007/s11433-019-1469-5)
- Cusumano, G., La Parola, V., D’Aì, A., et al. 2016, *MNRAS*, 460, L99, doi: [10.1093/mnras/rlw084](https://doi.org/10.1093/mnras/rlw084)
- Daugherty, J. K., & Harding, A. K. 1986, *ApJ*, 309, 362, doi: [10.1086/164608](https://doi.org/10.1086/164608)
- Doroshenko, V., Tsygankov, S. S., Mushtukov, A. A., et al. 2017, *MNRAS*, 466, 2143, doi: [10.1093/mnras/stw3236](https://doi.org/10.1093/mnras/stw3236)
- Frank, J., King, A., & Raine, D. J. 2002, *Accretion Power in Astrophysics: Third Edition*
- Fürst, F., Pottschmidt, K., Wilms, J., et al. 2014, *ApJ*, 780, 133, doi: [10.1088/0004-637X/780/2/133](https://doi.org/10.1088/0004-637X/780/2/133)
- Ge, M. Y., Ji, L., Zhang, S. N., et al. 2020, *ApJL*, 899, L19, doi: [10.3847/2041-8213/abac05](https://doi.org/10.3847/2041-8213/abac05)
- Harding, A. K., & Daugherty, J. K. 1991, *ApJ*, 374, 687, doi: [10.1086/170153](https://doi.org/10.1086/170153)
- Harding, A. K., & Lai, D. 2006, *Reports on Progress in Physics*, 69, 2631, doi: [10.1088/0034-4885/69/9/R03](https://doi.org/10.1088/0034-4885/69/9/R03)
- Inoue, H. 1975, *PASJ*, 27, 311
- Klochkov, D., Doroshenko, V., Santangelo, A., et al. 2012, *A&A*, 542, L28, doi: [10.1051/0004-6361/201219385](https://doi.org/10.1051/0004-6361/201219385)
- Lai, D. 2014, in *European Physical Journal Web of Conferences*, Vol. 64, *European Physical Journal Web of Conferences*, 01001, doi: [10.1051/epjconf/20136401001](https://doi.org/10.1051/epjconf/20136401001)
- Li, J., Wang, W., & Zhao, Y. 2012, *MNRAS*, 423, 2854, doi: [10.1111/j.1365-2966.2012.21096.x](https://doi.org/10.1111/j.1365-2966.2012.21096.x)
- Li, X., Li, X., Tan, Y., et al. 2020, *Journal of High Energy Astrophysics*, 27, 64, doi: [10.1016/j.jheap.2020.02.009](https://doi.org/10.1016/j.jheap.2020.02.009)
- Liu, C., Zhang, Y., Li, X., et al. 2020, *Science China Physics, Mechanics, and Astronomy*, 63, 249503, doi: [10.1007/s11433-019-1486-x](https://doi.org/10.1007/s11433-019-1486-x)
- Lutovinov, A. A., Tsygankov, S. S., Postnov, K. A., et al. 2017, *MNRAS*, 466, 593, doi: [10.1093/mnras/stw3058](https://doi.org/10.1093/mnras/stw3058)
- Lutovinov, A. A., Tsygankov, S. S., Suleimanov, V. F., et al. 2015, *MNRAS*, 448, 2175, doi: [10.1093/mnras/stv125](https://doi.org/10.1093/mnras/stv125)
- Lyubarskii, Y. E., & Syunyaev, R. A. 1982, *Soviet Astronomy Letters*, 8, 330
- Mihara, T. 1995, PhD thesis, -
- Mihara, T., Makishima, K., & Nagase, F. 2004, *ApJ*, 610, 390, doi: [10.1086/421543](https://doi.org/10.1086/421543)
- Molkov, S., Lutovinov, A., Tsygankov, S., Mereminskiy, I., & Mushtukov, A. 2019, *ApJL*, 883, L11, doi: [10.3847/2041-8213/ab3e4d](https://doi.org/10.3847/2041-8213/ab3e4d)
- Mushtukov, A. A., Nagirner, D. I., & Poutanen, J. 2016, *PhRvD*, 93, 105003, doi: [10.1103/PhysRevD.93.105003](https://doi.org/10.1103/PhysRevD.93.105003)
- Mushtukov, A. A., Suleimanov, V. F., Tsygankov, S. S., & Poutanen, J. 2015a, *MNRAS*, 454, 2539, doi: [10.1093/mnras/stv2087](https://doi.org/10.1093/mnras/stv2087)
- . 2015b, *MNRAS*, 447, 1847, doi: [10.1093/mnras/stu2484](https://doi.org/10.1093/mnras/stu2484)
- Mushtukov, A. A., Tsygankov, S. S., Serber, A. V., Suleimanov, V. F., & Poutanen, J. 2015c, *MNRAS*, 454, 2714, doi: [10.1093/mnras/stv2182](https://doi.org/10.1093/mnras/stv2182)
- Mushtukov, A. A., Verhagen, P. A., Tsygankov, S. S., et al. 2018, *MNRAS*, 474, 5425, doi: [10.1093/mnras/stx2905](https://doi.org/10.1093/mnras/stx2905)
- Nishimura, O. 2014, *ApJ*, 781, 30, doi: [10.1088/0004-637X/781/1/30](https://doi.org/10.1088/0004-637X/781/1/30)
- . 2019, *PASJ*, 71, 42, doi: [10.1093/pasj/psz008](https://doi.org/10.1093/pasj/psz008)
- Poutanen, J., Mushtukov, A. A., Suleimanov, V. F., et al. 2013, *ApJ*, 777, 115, doi: [10.1088/0004-637X/777/2/115](https://doi.org/10.1088/0004-637X/777/2/115)
- Riquelme, M. S., Torrejón, J. M., & Negueruela, I. 2012, *A&A*, 539, A114, doi: [10.1051/0004-6361/201117738](https://doi.org/10.1051/0004-6361/201117738)
- Rothschild, R. E., Kühnel, M., Pottschmidt, K., et al. 2017, *MNRAS*, 466, 2752, doi: [10.1093/mnras/stw3222](https://doi.org/10.1093/mnras/stw3222)
- Shapiro, S. L., & Salpeter, E. E. 1975, *ApJ*, 198, 671, doi: [10.1086/153645](https://doi.org/10.1086/153645)
- Staubert, R., Klochkov, D., Fürst, F., et al. 2017, *A&A*, 606, L13, doi: [10.1051/0004-6361/201731927](https://doi.org/10.1051/0004-6361/201731927)
- Staubert, R., Shakura, N. I., Postnov, K., et al. 2007, *A&A*, 465, L25, doi: [10.1051/0004-6361:20077098](https://doi.org/10.1051/0004-6361:20077098)
- Staubert, R., Trümper, J., Kendziorra, E., et al. 2019, *A&A*, 622, A61, doi: [10.1051/0004-6361/201834479](https://doi.org/10.1051/0004-6361/201834479)
- Truemper, J., Pietsch, W., Reppin, C., et al. 1978, *ApJL*, 219, L105, doi: [10.1086/182617](https://doi.org/10.1086/182617)
- Tsygankov, S. S., Doroshenko, V., Mushtukov, A. A., Lutovinov, A. A., & Poutanen, J. 2019, *A&A*, 621, A134, doi: [10.1051/0004-6361/201833786](https://doi.org/10.1051/0004-6361/201833786)
- Tsygankov, S. S., Lutovinov, A. A., Churazov, E. M., & Sunyaev, R. A. 2006, *MNRAS*, 371, 19, doi: [10.1111/j.1365-2966.2006.10610.x](https://doi.org/10.1111/j.1365-2966.2006.10610.x)
- . 2007, *Astronomy Letters*, 33, 368, doi: [10.1134/S1063773707060023](https://doi.org/10.1134/S1063773707060023)
- Tsygankov, S. S., Lutovinov, A. A., Krivoson, R. A., et al. 2016, *MNRAS*, 457, 258, doi: [10.1093/mnras/stv2849](https://doi.org/10.1093/mnras/stv2849)
- Tsygankov, S. S., Lutovinov, A. A., & Serber, A. V. 2010, *MNRAS*, 401, 1628, doi: [10.1111/j.1365-2966.2009.15791.x](https://doi.org/10.1111/j.1365-2966.2009.15791.x)
- Vybornov, V., Klochkov, D., Gornostaev, M., et al. 2017, *A&A*, 601, A126, doi: [10.1051/0004-6361/201630275](https://doi.org/10.1051/0004-6361/201630275)
- Walter, R., Lutovinov, A. A., Bozzo, E., & Tsygankov, S. S. 2015, *A&A Rv*, 23, 2, doi: [10.1007/s00159-015-0082-6](https://doi.org/10.1007/s00159-015-0082-6)
- Wang, W. 2014a, *Research in Astronomy and Astrophysics*, 14, 565, doi: [10.1088/1674-4527/14/5/006](https://doi.org/10.1088/1674-4527/14/5/006)
- . 2014b, *MNRAS*, 440, 1114, doi: [10.1093/mnras/stu210](https://doi.org/10.1093/mnras/stu210)
- Wang, W., Tang, Y. M., Ge, M. Y., et al. 2021, *Journal of High Energy Astrophysics*, 30, 1, <https://arxiv.org/abs/2102.12085>
- Wang, Y. M., & Frank, J. 1981, *A&A*, 93, 255
- Xiao, G. C., Ji, L., Staubert, R., et al. 2019, *Journal of High Energy Astrophysics*, 23, 29, doi: [10.1016/j.jheap.2019.09.002](https://doi.org/10.1016/j.jheap.2019.09.002)
- Yamamoto, T., Mihara, T., Sugizaki, M., et al. 2014, *PASJ*, 66, 59, doi: [10.1093/pasj/psu028](https://doi.org/10.1093/pasj/psu028)