



Universiteit
Leiden
The Netherlands

Elucidating the pathogenesis underlying bicuspid aortic valve disease using new disease models

Pol, V. van de

Citation

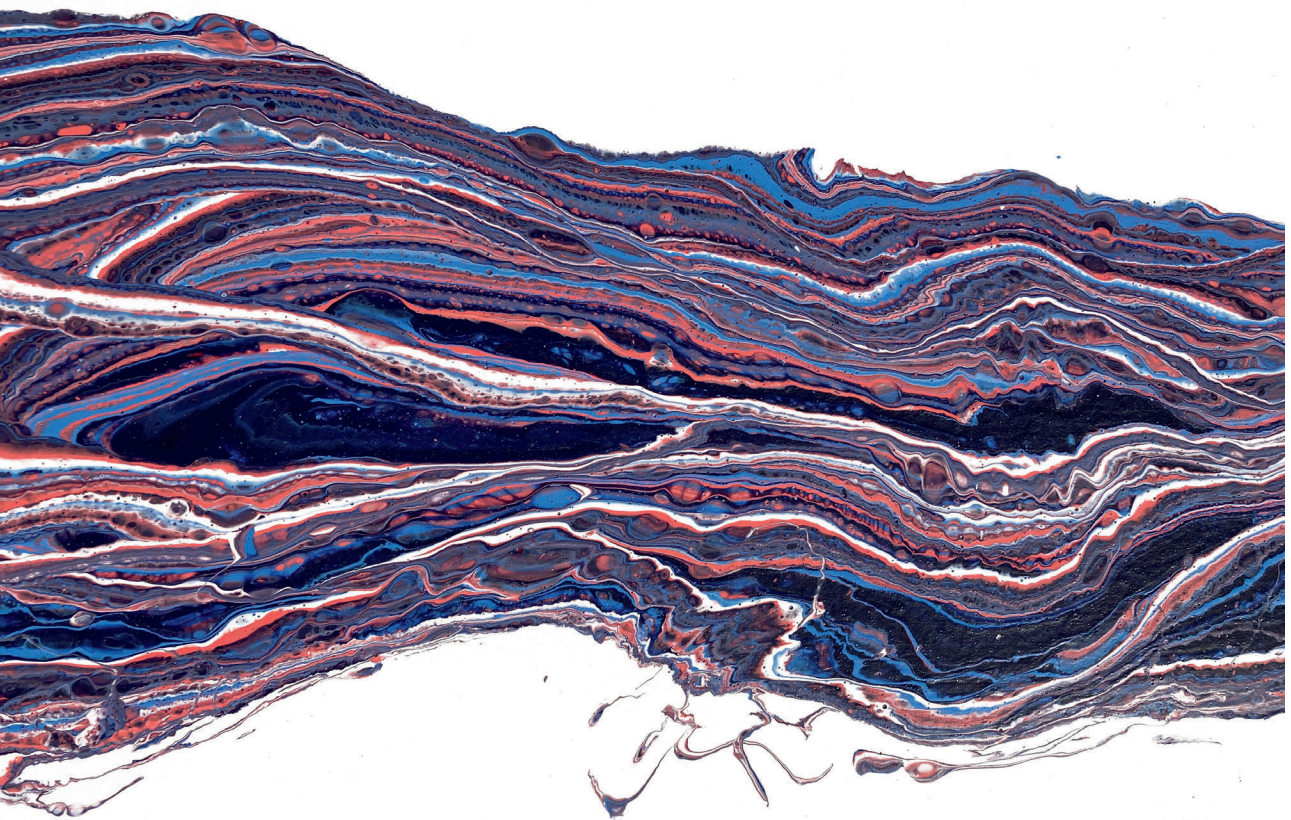
Pol, V. van de. (2022, January 12). *Elucidating the pathogenesis underlying bicuspid aortic valve disease using new disease models*. Retrieved from <https://hdl.handle.net/1887/3249566>

Version: Publisher's Version

License: [Licence agreement concerning inclusion of doctoral thesis in the Institutional Repository of the University of Leiden](#)

Downloaded from: <https://hdl.handle.net/1887/3249566>

Note: To cite this publication please use the final published version (if applicable).



Chapter 2

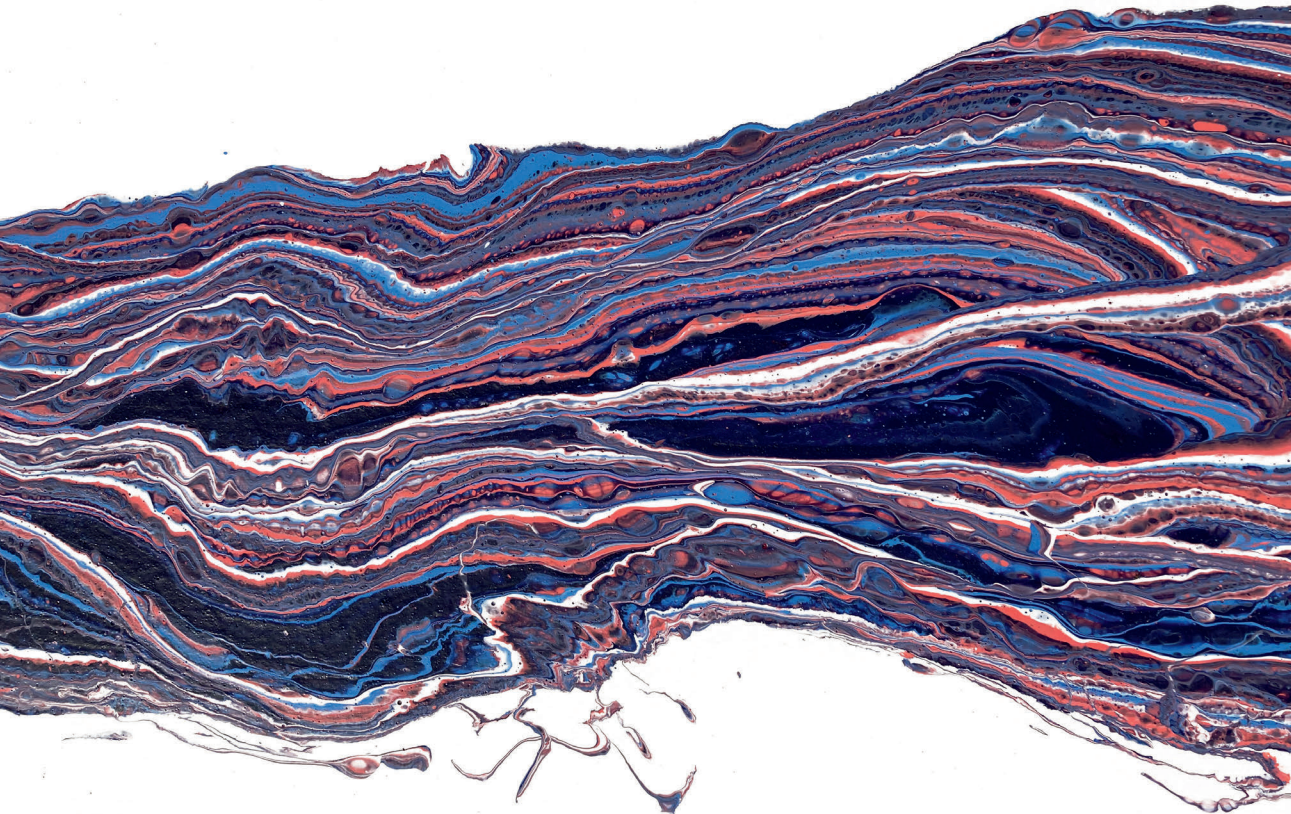
Thoracic aortic aneurysm development in patients with bicuspid aortic valve: What is the role of endothelial cells?

Vera van de Pol¹, Konda Babu Kurakula¹, Marco C. DeRuiter²,
Marie-José Goumans¹

¹ Department of Molecular Cell Biology, Leiden University Medical Center, Leiden, The Netherlands

² Department of Anatomy and Embryology, Leiden University Medical Center, Leiden, The Netherlands

Published: Frontiers in Physiology, 2017 | 8: p. 938



Abstract

Bicuspid aortic valve (BAV) is the most common type of congenital cardiac malformation. Patients with a BAV have a predisposition for the development of thoracic aortic aneurysm (TAA). This pathological aortic dilation may result in aortic rupture, which is fatal in most cases. The abnormal aortic morphology of TAAs results from a complex series of events that alter the cellular structure and extracellular matrix (ECM) composition of the aortic wall. Because the major degeneration is located in the media of the aorta, most studies aim to unravel impaired smooth muscle cell (SMC) function in BAV TAA. However, recent studies suggest that endothelial cells play a key role in both the initiation and progression of TAAs by influencing the medial layer. Aortic endothelial cells are activated in BAV mediated TAAs and have a substantial influence on ECM composition and SMC phenotype, by secreting several key growth factors and matrix modulating enzymes. In recent years there have been significant advances in the genetic and molecular understanding of endothelial cells in BAV associated TAAs. In this review, the involvement of the endothelial cells in BAV TAA pathogenesis is discussed. Endothelial cell functioning in vessel homeostasis, flow response and signaling will be highlighted to give an overview of the importance and the under investigated potential of endothelial cells in BAV-associated TAA.

Introduction

Bicuspid aortic valve (BAV) is the most common congenital cardiovascular malformation with a prevalence of 0.5–1.5% in the general population and a male predominance of about 3:1 [1,2]. In this anomaly, the aortic valve consists of 2 leaflets instead of the regular 3 leaflets. The BAV usually exhibits normal function at birth and during early life, however in adulthood BAV patients can develop several serious complications such as valvular stenosis and/or regurgitation, aortic dilation and thoracic aortic aneurysms (TAA). Although TAAs occur both in tricuspid aortic valves (TAV) and BAV, it has been estimated that 50%–70% of BAV patients develop aortic dilation and approximately 40% of BAV patients develop TAAs [3,4]. Moreover, patients with a BAV have a 9-fold higher risk for aortic dissection compared to the general population [5]. To monitor dilation progression in BAV patients the aortic diameter is regularly measured using echocardiography. However, no treatment options are available to prevent dilation or impact on the remodeling aortic wall. Surgical intervention with the aim to prevent rupture is therefore currently the only therapy for TAAs.

Thoracic aortic aneurysm

While smooth muscle cells (SMCs) in the healthy media have a contractile phenotype, they are not terminally differentiated. This ensures the ability to regenerate the vessel wall after injury. This flexible change between cellular phenotypes is called “phenotypic switching”, with the contractile and synthetic SMCs on opposite sides of the spectrum. After phenotypic switching the synthetic SMCs can migrate towards a wounded area by secreting proteinases to break down the ECM. Synthetic SMCs also proliferate and produce ECM to repair the wall. When the vessel wall is repaired, synthetic SMCs will re-differentiate towards a contractile phenotype. TAA is characterized by phenotypic switching of contractile to synthetic SMCs and fragmentation of elastic lamellae (Figure 1). The BAV aorta is more prone to TAA development, possibly due to differences in vascular homeostasis. For example, it has been shown that non-dilated BAV aorta, like the dilated TAV aorta, has an increased collagen turnover [6]. Moreover, orientation, fiber thickness and collagen crosslinking is altered in the dilated BAV aorta compared to the TAV aorta [7]. Additionally, decreased expression levels of lamin A/C, α -smooth muscle actin (α -SMA), calponin and smoothelin were not only found in dilated, but also in non-dilated BAV aorta [8]. Abdominal aortic aneurysms (AAA) share some common features with TAA, but differ in that atherosclerosis plays a major role in AAA, whereas medial degeneration is characteristic of TAA [9].

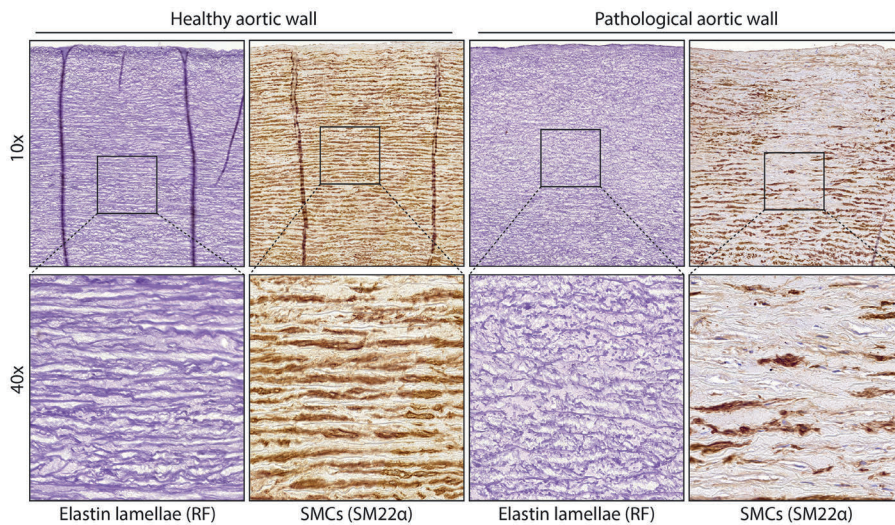


Figure 1. Structure of normal and diseased aortic wall. Images of aortic tissue showing elastic lamellae (stained with RF) or smooth muscle cells (SM22 staining). On the left is normal aortic tissue, the right image shows aortic tissue with fragmentation of the lamellae or loss of contractile SMCs.

The mechanism initiating thoracic aortic dilation is thus far unknown, however, the two main hypotheses are that either an altered flow greatly impacts vessel wall homeostasis (flow hypothesis) or that an intrinsic cellular defect contributes to the formation of BAV as well as to the dilation of the aorta in these patients (genetic hypothesis) [10]. Several genes related to structural proteins have been found mutated in BAV patients, such as *ACTA2*, *MYH11*. Furthermore, in BAV patients multiple mutations have also been found in genes related to signaling proteins such as *NOTCH1* and genes related to the TGF β signaling pathway [11-13]. In addition to isolated cases, BAV has also been demonstrated to occur within families [14,15]. Interestingly, 32% of the first-degree relatives of BAV patients with a TAV also develop aortic root dilation, suggesting that the genetic predisposition for BAV and TAA overlap or may be identical in these families [16]. However, a clear inheritance pattern remains to be found. TAAs are also observed in patients with other syndromes such as Marfan, Loeys–Dietz and Ehler–Danlos, but contrastingly, BAV seldom occurs in these syndromes [17,18]. For an overview of genetic variation associated with BAV and the effect on endothelial functioning see Table 1.

Table 1. Consequences of genetics associated with BAV on cardiac malformations and endothelial cell functioning

Pathway	Mutation	Effect	Other cardiovascular malformations	BAV occurrence	Effect of mutation on endothelial function
TGFβ	<i>GATA5^{ec}ALK2^{fl/fl}b</i> [127]	ALK2 deletion in cushion mesenchyme	not/under developed non-coronary leaflet	78-83%	Constitutively active ALK2 induces EndoMT and is required for HDL induced EC survival and protection from calcification [128,129]
	<i>ENG^s</i> [101]	Conservative peptide shift	HHT	Increased haplotype in BAV with an OR of 2,79	Flow and ligand induced EC migration is disrupted increased proliferation and responsiveness to TGFβ1 [130,131]
	<i>TGFRR2^s</i> [11,132]	Missense/nonsense/splicing mutations	LDS, Marfan, TAA	7% of the cohort	Maintenance of vascular integrity [133]
	<i>SMAD6</i> [12]	Loss of function	AoS, AoC and aortic calcification	3/436 patients, 0/829 controls	Increases SMAD6, inhibits TGFβ signaling [134]
	<i>ADAMTS^{-/-}SMAD2^{+/-b}</i> [135]	Loss of function for Adamts5 and SMAD2	Myxomatous valves, BPV	75% Non-coronary with either left or right coronary cusp	Embryonic vascular instability, SMAD2 increases eNOS expression [136]
Other	<i>IFT88^{fl/fl}NFATC^{Cre}b</i> [23]	Endothelial specific loss of primary cilia	-	68% BAV right/non-coronary fusion	ECs without primary cilia undergo EndoMT upon shear stress [22]
	<i>eNOS^{-/-}b85</i>	No functional eNOS	-	42% BAV right/non-coronary fusion	Decreased EndoMT [137]
	<i>GATA5^a/TIE2^{ec}GATA5^{fl/fl}b</i> [138,139] [140]	Reduced Gata5 activity Gata5 ^a / Gata5 deletion in ECs ^b	VSD, aortic stenosis ^a / LV hypertrophy, AS ^b	autosomal dominant BAV inheritance ^a / 25% ^b	Altered PKA and NO signaling [141]

Table 1. Consequences of genetics associated with BAV on cardiac malformations and endothelial cell functioning (*continued*)

Pathway	Mutation	Effect	Other cardiovascular malformations	BAV occurrence	Effect of mutation on endothelial function
	<i>NOTCH1</i> ^a [64]	Autosomal dominant mutant notch1	CAVD and other cardiac malformations	Autosomal dominant inheritance with complete penetrance	NOTCH1 increases calcification, oxidative stress and inflammation, when exposed to shear stress [142]
	<i>NKX2.5</i> ^a [143]	Loss of function	ASD, PFO, AS and conduction defects	One family with an autosomal dominant inheritance	-
	<i>ACTA2</i> ^a [144]	Missense mutation	Family with FTAAD	3/18 patients with TAAAD and mutation	-
	<i>FBN1</i> ^a [132]	Diverse	Marfan, TAA	4% of the cohort	-

^a found in human, ^b found in mice, OR= Odds ratio, AoC= Aortic coarctation, AoS= Aortic valve stenosis, AS= Aortic stenosis, ASD= Atrial septal defect, BPV= Bicuspid pulmonary valve, CAVD= calcific aortic valve disease, HHT= Hereditary hemorrhagic telangiectasia, LDS= Loey's-Dietz syndrome, LV= Left ventricle, PFO= Patent foramen ovale

Endothelial cells in vessel homeostasis

Due to the obvious medial degeneration in the aortic wall, research in the past decades has focussed on characterizing the organization and SMC phenotype of the aortic media during dilation and aneurysm [17,19,20]. Therefore, despite their main regulatory function, endothelial cells have so far taken the back seat in research towards understanding and treating aortic dilation. However, there is growing evidence that endothelial cells play an important role in the development and progression of aortic dilation.

Endothelial cells line the lumen of the aorta which, together with some ECM and the internal elastic lamella, form the intima. As the layer between the blood (flow) and the main structural component of the aorta (the media) the function of endothelial cells is to communicate the signal between these two layers. Upon flow and stimuli such as inflammatory cytokines, signaling pathways like TGF β , angiotensin and nitric oxide (NO) allow endothelial cells to directly target the contraction status of SMCs or indirectly target the SMC contractile phenotype to influence vessel wall functioning (Figure 2). Primary cilia on the luminal surface of the endothelial cells enable mechanosensing and signaling

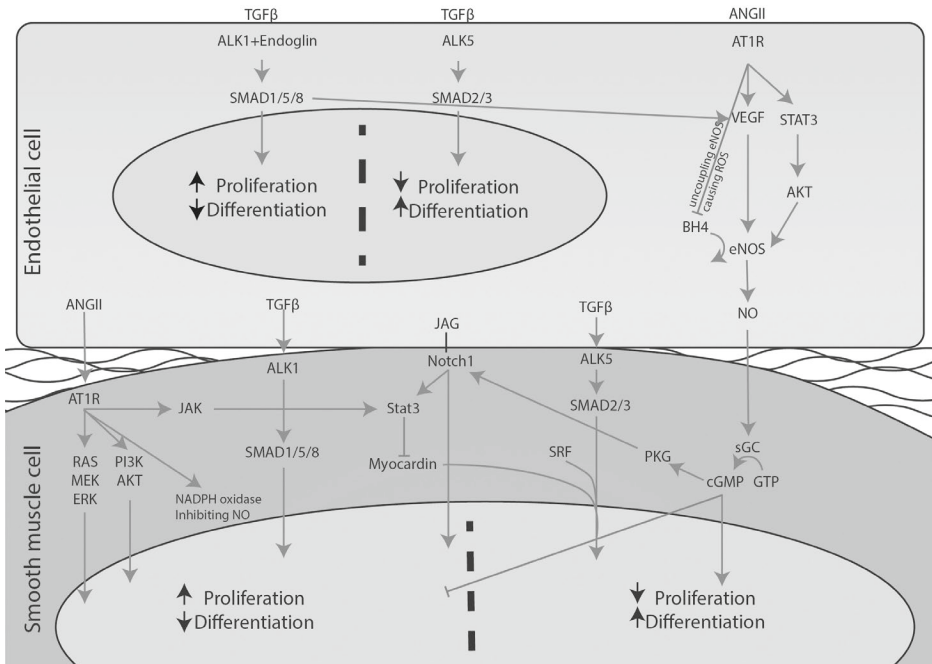


Figure 2. Schematic overview of signaling pathways between endothelial cells and SMCs. A simplified overview on the communication between endothelial cells and SMCs is depicted. Extensive crosstalk between pathways such as Notch1, ANGII, TGF β , and NO can influence proliferation and differentiation of SMCs and affect the phenotypic switch of SMCs.

[21]. Endothelial cells lacking cilia change towards a mesenchymal phenotype, a process called endothelial to mesenchymal transformation (EndoMT) in which endothelial specific genes such as VE-cadherin and PECAM1 are down-regulated, whereas mesenchymal genes such as α SMA and fibronectin are up-regulated [22]. Intriguingly, a recent study demonstrated that *Ift88^{fl/fl}* mice crossed with *Nfatc^{Cre}*, thereby lacking a primary cilium specifically in endothelial cells, display a highly penetrant BAV [23] (Table 1).

The influence of flow on endothelial functioning and vessel homeostasis

The flow pattern of blood from the heart into the aorta is altered by a BAV [24]. This difference between TAV and BAV hemodynamics in the aorta can be beautifully demonstrated using 4D MRI. Compared to a TAV, BAV generate a high velocity ‘jet’ propelling at an angle against the wall in the BAV aorta. This jet stream also causes an increase in peak shear stress on the endothelial cells [24]. As mentioned above, aside from the genetic hypothesis, the altered flow is also hypothesized to cause the aortic dilation in BAV.

It has been long known that adjusting flow induces remodeling of the vessel wall. Already, more than 30 years ago it was published that by decreasing blood flow in the carotid artery of rabbits by 70%, the lumen size of the vessel was decreased by 21% to compensate for the decreased blood flow [25]. Vascular remodeling is induced by increased shear stress on endothelial cells to restore original shear forces on the wall [26]. That flow greatly impacts endothelial functioning is also portrayed by the localization of fatty streaks and atherosclerosis at branch points and curves of arteries [26]. The turbulent flow at these locations causes dysfunctional endothelium: endothelial cells undergo apoptosis or exhibit increased proliferation. Moreover, permeability is increased, allowing LDL penetration into the intima as well as inflammatory cell adhesion and infiltration. Laminar flow induces the opposing quiescent endothelial phenotype characterized by a low turnover, alignment in the direction of the flow, decreased expression of inflammatory adhesion molecules like I-CAM and a low permeability caused by increased cell-cell adhesion molecules such as N-CAM and E-cadherin [27]. Experiments using co-culture of endothelial cells and SMCs revealed that flow on endothelial cells can also impact the phenotype of the underlying SMCs. Laminar shear stress on endothelial cells induces a contractile phenotype in synthetic SMCs, shown with both co-culture experiments of endothelial cells under flow with SMCs, as by adding conditioned medium from flow exposed endothelial cells to SMCs [28,29]. Upon laminar flow, endothelial cells signal towards SMCs using, for example, microRNA (miR)-126, prostacyclin, TGF β 3 and NO [28-31] MiR-126 in endothelial microparticles (EMPs) decreases

SMC proliferation and neointima formation [32]. Interestingly, EMP secretion is elevated in BAV associated TAA [33]. It is believed that EMPs are formed when endothelial cells are trying to avoid undergoing apoptosis, possibly explaining the association of elevated levels of EMPs with vascular diseases such as diabetes, congestive heart failure and acute coronary syndrome [34-36].

MiR-126 is only one means by which endothelial cells can impact on the vascular homeostasis. The main signaling pathways involved in BAV TAA and endothelial cells will be discussed in the next paragraphs.

Angiotensin II signaling in TAA

One of the major signaling pathways disturbed in aortic dilation is the Renin-Angiotensin-Aldosterone-System (RAAS), which is important for maintaining blood pressure. By constriction/relaxation of blood vessels and altering water retention of the kidneys, the blood pressure is regulated. The juxtaglomerular cells in the kidney and baroreceptors in vessel wall can sense arterial blood pressure. Upon a drop in pressure, renin is released by the juxtaglomerular cells and renin then converts angiotensinogen into angiotensin I (ANGI), which in turn is converted by angiotensin converting enzyme (ACE) into angiotensin II (ANGII). Amongst others, ANGI can cause contraction of the SMCs to increase blood pressure. This contraction is caused by the binding of ANGI to the angiotensin II type 1 receptor (AT1) on the SMCs, which in a cascade via Ca^{+} /calmodulin, activates the myosin light chain (MLC) kinase and rapidly phosphorylates MLC, causing contraction of SMCs. In addition, ANGI stimulates the cortex of the adrenal gland to secrete aldosterone, which increases water resorption in the kidney.

Aside from this direct vasoconstrictive effect, prolonged RAAS activation has diverse pathological effects. Aldosterone has been shown to cause endothelial dysregulation as well as a synthetic phenotype in SMCs [37]. Chronic infusion of ANGI in *ApoE^{-/-}* mice demonstrated to cause progressive TAAs and AAAs [38,39]. The administration of ANGI in these mice decreased α SMA and calponin expression in the mouse aortas [40,41]. Moreover, ACE2 expression was increased in mouse aortas after ANGI infusion as well as in dilated aortas of BAV patients [42]. ACE insertion/deletion polymorphisms were also identified as risk factor for the development of TAA in BAV patients [43]. Furthermore, a correlation was found between chronic elevated levels of ANGI and endothelial cell dysfunction in patients with hyperaldosteronism, underlining the importance of the RAAS system and endothelial functioning [44].

A seminal study performed by Rateri and colleagues, displayed the importance of endothelial cell functioning in the ANGI aneurysm model [45]. Interestingly, mice with specific deletion of *AT1* in SMCs or monocytes still developed

aortic aneurysms following a chronic ANGII infusion, while endothelial specific knock-out of *AT1*, did not exhibit dilation of the thoracic aorta. This study indicates that the primary target cell for ANGII in this model is the endothelial cell, which in turn influences the SMCs, causing the aortic structure to break down. How exactly this ANGII-endothelial cell signaling affects the SMC phenotype remains a crucial and intriguing question to be investigated. The same group one year later showed that AAA are not inhibited in the endothelial cell specific *AT1* knock-out, elegantly demonstrating that indeed there is a difference in pathogenesis between TAA and AAA [46]. This difference might be explained by a more prominent role for the adventitia than the intima in AAA development, or the developmentally different origin of SMCs in different parts of the aorta [47-50].

Aside from studies to understand the pathogenesis of TAA, ANGII treatment to model aortic aneurysm in mice is also used in the search of new treatment options. A recent study displayed that by treating ANGII infused mice with a combination therapy of Rosuvastatin and Bexarotene (retinoid X receptor- α ligand), aneurysm development was inhibited [51]. Moreover, they showed that this combination therapy affected endothelial cell proliferation, migration and signaling. In addition, upon ANGII treatment the VEGF secretion by endothelial cells *in vitro* was decreased [51]. Culture of SMCs from BAV patients exhibited an increase in AT1R expression, which was reduced to the levels of control SMCs by treatment using losartan [52]. Interestingly, antagonizing TGF β by blocking the AT1 receptor using Losartan in a Marfan disease model mouse (*FBN1* mutation) demonstrated promising results for preventing and even reversing aortic dilation [53]. Furthermore, several clinical studies in Marfan patients reveal similar exciting results. However, a meta-analysis of clinical studies towards Losartan in Marfan patients did not show a reduction of aortic dilation in Losartan treated patients [54]. Losartan treatment in BAV patients has not been investigated yet. A clinical study was initiated, but recently terminated due to low enrolment.* Therefore, the effect of Losartan on BAV TAA still needs to be determined.

Notch1 signaling in TAA

Notch signaling plays an important role in cardiovascular development [55]. In contrast to many signaling pathways, Notch signaling is cell-cell contact dependent. There are 4 Notch homologues of which Notch1 is the best known. Binding of Notch1 ligands Jagged1, Jagged2 and/or Delta expressed in one cell induces cleavage of the receptor and nuclear translocation of the intracellular domain in the other cell causing transcription of, amongst others, the HES/HEY gene family, key regulators in EndoMT [56]. Notch1 signaling induces EndoMT in

endothelial cells and promotes a contractile phenotype in SMCs [57]. Moreover, Notch1 signaling is required for angiogenesis [58].

Notch signaling was displayed to be crucial for normal development of the aortic valve and outflow tract amongst others, as determined in *NOTCH1*^{-/-} mice [59]. Specifically in the neural crest cells, Notch signaling is important. It was found that disruption of endothelial Jagged1 signaling to Notch on neural crest cells, inhibits SMC differentiation [60]. The Notch signaling pathway, as well as the TGFβ signaling pathway, is involved in EndoMT occurring in the outflow tract cushions, where endothelial cells change to populate the developing cardiac valves [61]. Thereby EndoMT is a crucial part of aortic valve development. Previous studies hypothesised that EndoMT may also play a role in the pathogenesis of BAV. Additionally, genes involved in this process such as *NOTCH1*, *TGFBR2* and *SMAD6*, have been found to cause BAV in mouse models, as well as being linked to BAV in human studies [11-13,62-64]. Mice with *NOTCH1* missense alleles have been characterized with multiple outflow tract and EndoMT defects [65]. Recently, it was demonstrated that specifically endothelial Notch1 signaling is required for normal outflow tract and valve development [66]. Moreover, a *NOTCH1* mutation was found in a family with BAV, underscoring Notch1 as an important signaling pathway in BAV [64]. These mutations have been associated with an increased risk of calcific aortic valve disease (CAVD), explained by the normally repressive function of Notch on calcification in valvular cells [64,67,68]. Additionally, one study reported severely calcified valves in BAV patients with Cornelia de Lange syndrome, a disease caused by dysfunctional Notch signaling [69].

Aside from the role of Notch signaling in valve formation, proper Notch signaling is also important for the homeostasis of the aorta, as illustrated by several studies. The non-dilated aorta of BAV patients showed increased Notch signaling and EndoMT marker expression based on proteomic analysis [70]. Furthermore, a study using endothelial cells isolated from BAV aorta demonstrated decreased *Notch1*, *Notch4* and *DLL4* mRNA levels compared to TAV non-aneurysmal tissue [71]. Moreover, upon TGFβ stimulation, there was a defective Notch dependent EndoMT response. Endothelial marker proteins such as VWF and PECAM, were unchanged between BAV and TAV endothelial cells. However, EndoMT markers HES1 and SLUG were significantly less upregulated in BAV endothelial cells compared to TAV endothelial cells. In addition, *JAG1* expression is normally upregulated upon Notch1 signaling and acts as a positive feedback-loop. This upregulation of Jagged1 was decreased in BAV endothelial cells, explaining at least part of the dysfunctional Notch signaling in BAV patients with TAA [71].

Interestingly, Notch1 plasma levels in combination with TNF α -converting enzyme were shown to correlate highly with the presence of AAA [72]. Furthermore, studies demonstrated that *NOTCH1* haploinsufficiency or Notch1 inhibition can prevent or reduce the formation of AAA in ANGII infused mice [73,74]. However, the similarity in Notch signaling between AAA and TAA is debatable, as it has been displayed that in descending TAA tissue, in contrast to the ascending TAA, the SMCs exhibit a decreased Notch1 signaling, emphasizing the importance of the local environment in the aortic aneurysm formation [75].

eNOS signaling in TAA

Nitric oxide (NO) is produced when NO synthase (NOS) converts arginine into citrulline, releasing NO in the process. NOS was originally discovered in neurons (nNOS/NOS1), after which inducible NOS (iNOS/NOS2) and endothelial NOS (eNOS/NOS3) were found. eNOS phosphorylation increases NO production and is induced by factors such as shear stress, acetylcholine and histamine. NO has a very short half-life of a few seconds, making it a local and timely signal transducer. Endothelial secreted NO diffuses into the SMC where it relaxes the cell by increasing the calcium uptake into the sarcoplasmic reticulum by stimulating the sarco/endoplasmic reticulum ATPase (SERCA), thereby decreasing cytoplasmic Ca⁺ levels. Additionally, NO has also been revealed to regulate gene transcription by reacting with NO sensitive transcription factors [76]. Finally NO has been shown to impact the SMC inflammatory status, however more research is required to fully understand the effect of NO on SMC phenotype [77]. Uncoupled eNOS causes free oxygen radicals to be formed, which damages proteins and DNA.

Multiple studies have identified an important role for dysregulated endothelial NO signaling in aneurysm development. For example, it has been demonstrated that the oxidative stress is increased in the media of the aortas of BAV patients compared to TAV aortas [78]. Interestingly, a mouse model with uncoupled eNOS (HPH-1 mice) rapidly developed AAA and aortic rupture upon ANGII infusion, whereas wild-type (WT) mice did not display this phenotype [79]. Re-coupling of eNOS by infusion of folic acid, inhibited AAA formation [79]. A study investigating the effect of iNOS deletion in an elastase infusion mouse model of experimentally induced AAA did not demonstrate any substantial exacerbation of the aneurysm phenotype, indicating the importance of endothelial NO in aneurysm formation [80]. Intriguingly, a follow-up study identified plasma and tissue levels of the eNOS co-factor tetrahydrobiopterin, necessary for coupling of eNOS, correlate with aneurysm development in *ApoE*^{-/-} mice and HPH-1 mice [81]. In line with these studies, it was shown that endothelial specific

expression of reactive oxygen species, by an endothelial specific overexpression of NOX2, can cause dissection in WT mice upon ANGII infusion [82]. Moreover, eNOS knockout mice develop BAV, underlining the importance of endothelial dysfunction in the formation of BAV and the related TAA [83].

In patients with a TAV and TAA, profiling of the aortic tissue revealed that eNOS phosphorylation was increased via a miR-21 dependent mechanism [84]. MiR-21 is specifically upregulated by shear stress and causes PTEN mRNA degradation, allowing an increase in eNOS phosphorylation [85]. Furthermore, BAV TAA patient aortic samples displayed increased eNOS expression and activation compared to TAV TAA controls [86]. These studies indicate an increased eNOS activity in TAA formation in BAV patients. Contrastingly, decreased eNOS expression has been found in 72,7% aortic samples of BAV patients (N=22) [87]. In addition, a negative correlation between eNOS expression levels and aortic dilation in BAV patients was reported [88].

In conclusion, multiple studies have investigated eNOS in the BAV aorta, with contrasting outcomes [86-89]. These discrepancies may be caused by differences between patient populations, location of the aortic sample used, stage of aortic aneurysm formation and the use of different control samples for comparison. Nonetheless, all these studies indicate that normal levels of coupled eNOS are necessary to maintain a healthy aortic wall.

TGF β signaling in TAA

TGF β signaling is mediated by binding of the ligand TGF β to the TGF β type 2 receptor, which recruits and phosphorylates a TGF β type 1 receptor. While there is only one type 2 receptor, TGF β can signal via two TGF β type 1 receptors, Activin-like kinase (ALK)1 and ALK5. Upon ligand binding, ALK5 can phosphorylate SMAD2 or SMAD3 and ALK1 can phosphorylate SMAD1, SMAD5 or SMAD8. The phosphorylated SMADs translocate into the nucleus with SMAD4 to induce the canonical signaling pathway. TGF β can also signal via non-canonical pathways by activating PI3K/AKT, MAPK or NF- κ B. Via the canonical and non-canonical pathways, TGF β influences cell cycle arrest, apoptosis, inflammation, proliferation and more.

In endothelial cells, TGF β signaling can either inhibit or stimulate the cell growth and function depending on the context [90]. TGF β signaling via ALK1 induces proliferation and migration, whereas ALK5 signaling promotes plasminogen activator inhibitor 1 (PAI1) expression, decreasing the breakdown of the ECM necessary for maturation of the vessel wall [91,92]. The two opposing effects of TGF β signaling enable the initial growth of vessels followed by stabilization of the ECM and attraction of SMCs. Moreover, endothelial TGF β signaling

in concert with platelet derived growth factor-BB is crucial for attracting and differentiating pre-SMCs during vasculogenesis [93]. Because of these crucial functions of TGF β during embryonic development, loss of TGF β signaling in the vascular system, either total knockout or SMC or endothelial cell specific deletion is embryonically lethal [90]. In SMCs TGF β induces a contractile phenotype, and dysregulation of TGF β therefore can have a major impact on SMC phenotype [94]. The importance of endothelial TGF β signaling on SMC differentiation is illustrated by co-culture of endothelial cells and SMCs. Cultured alone, the SMCs have a synthetic phenotype, but when co-cultured with endothelial cells, they differentiate into contractile SMCs via the PI3K/AKT signaling pathway [95].

The TGF β Type III receptor endoglin (*ENG*) is highly expressed by endothelial cells and plays a role in the ALK1 and ALK5 signaling balance [96]. In fact, without endoglin, endothelial cells stop proliferating as a result of decreased ALK1 signaling [97]. In addition, knock-out of *ENG* in mice causes embryonic lethality due to impaired angiogenesis, whereas vasculogenesis remains intact [98,99]. This exemplifies the pivotal role for TGF β signaling in endothelial cells for proper angiogenesis. As mentioned above, TGF β signaling, like Notch signaling, is important for the process of EndoMT necessary for the developing cardiac valves. Chimera research using *ENG*^{-/-} mice embryonic stem cells, added to WT mice morulae highlighted the indispensable role of endoglin for EndoMT in the developing cardiac valves [100]. These chimeric mice showed contribution of the *ENG*^{-/-} cells to the endothelium. However, no *ENG*^{-/-} cells participated in populating the atrio-ventricular (AV) mesenchyme of the developing AV cushions. Intriguingly, a single-nucleotide polymorphism in *ENG* was found in BAV patients, indicating that in BAV patients endothelial TGF β signaling might be altered, potentially promoting a phenotypic switch in the underlying SMCs [101].

Many studies using *in vitro*, *ex vivo* and histological methods, also indicate a role for TGF β signaling in TAA formation in BAV. Unstimulated, cultured BAV and TAV SMCs did not demonstrate any difference in gene expression in basal conditions, however after TGF β stimulation, 217 genes were found differentially expressed between BAV and TAV SMCs demonstrating a difference in TGF β signaling [102]. Moreover, induced pluripotent stem cells (iPSCs) derived from BAV patients with a dilated aorta exhibited decreased TGF β signaling compared with iPSCs from TAV controls without aortic dilation (Jiao et al., 2016). Conversely, a hypothesis-free analysis of the secretome of BAV TAA indicated a highly activated TGF β signaling pathway in the aortic wall of BAV patients when compared to the secretome of TAV aneurysmal aortic tissue [103]. This study showed, using mass spectrometry on all proteins in conditioned medium of the aortic samples, a 10-fold increase of latent TGF β binding protein 4 (LTBP4) in the BAV samples

[103]. Histological analysis identified that, compared to normal aortic tissue, BAV dilated aortic tissue had an increase in SMAD3 and TGF β in the tunica media [52]. However, when compared to dilated TAV aorta, the expression of SMAD 2/3 was higher in the TAV dilated aorta than the BAV dilated aorta [103]. Furthermore, it has been shown that the circulating TGF β levels in BAV patient are elevated, which is in agreement with studies showing increased TGF β signaling [104,105].

Multiple studies have demonstrated that antagonizing TGF β signaling in aneurysm mouse models prevents and even reverses aneurysm formation [53,106,107]. The positive effects of TGF β antagonism on aneurysm formation were shown in using a neutralizing TGF β -antibody or by blocking the AT1 receptor using Losartan, which also decreases TGF β signaling. In different mice models, Fibrillin-1 deficient, Fibulin-4 deficient and ANGII treated mice, the TGF β inhibition prevented and reversed aortic aneurysm, making it a promising target for therapy [53,106,107]. A study using cultured SMCs revealed that Losartan treatment decreased intracellular TGF β protein levels and nuclear SMAD3 localization [52]. BAV derived SMCs displayed a decrease in endoglin expression upon Losartan treatment [108]. Furthermore, serum TGF β levels decreased when mice were treated with Losartan. The same was also seen in Marfan patients on Losartan, validating the study results obtained in mice [53,109]. However, as mentioned above, so far Losartan treatment does not seem to decrease or prevent aneurysm formation in a clinical setting. Given the recent success of specific TGF β blockers in other vascular disorders such as pulmonary arterial hypertension (PAH) and restenosis, targeting the TGF β pathway more directly could be a strategy for developing new treatment modalities for TAA [110,111].

Endothelial dysfunction in other diseases: implications for BAV-TAA?

Many cardiovascular disorders have highlighted the importance of normal endothelial functioning for maintaining homeostasis across the vessel wall, such as atherosclerosis, brain aneurysms, PAH and hereditary haemorrhagic telangiectasia (HHT). PAH and HHT are 2 major genetic diseases in which the role of the endothelial cells is well recognized. Two recent advances in these research fields worth mentioning for future perspectives in BAV TAA research, will be discussed in the next paragraphs.

PAH is an incurable fatal disease caused by remodeling of the pulmonary arteries. Proliferation of the pulmonary artery smooth muscle cells (PASMCs) causes narrowing and occlusion of the lumen, leading to an increased pressure in the lungs and increased load of the right ventricle [112]. While originally defined

as a SMC disorder, over the past years dysfunction of the endothelial cells has become of interest in the pathogenesis of PAH [112-114]. The application of conditioned medium from normal endothelial cells to PSMCs resulted in an increase in PSMC proliferation rate [115]. This effect is exaggerated when adding conditioned medium of endothelial cells from PAH patients. Complementary, PSMCs from PAH patients showed an increased proliferation to both endothelial cell conditioned media, compared with control PSMCs. Two of the major players identified within the conditioned medium are miR-143 and miR-145. These miRs have been demonstrated to highly impact the SMC phenotypic switch, inducing a contractile phenotype [116]. Expression of these two miRs is regulated by TGF β and they have been shown to be secreted in exosomes [117,118]. Intriguingly, in PAH mouse models as well as patient lung tissue and cultured SMCs, miR-143-3p expression is increased. Furthermore, miR-143^{-/-} mice developed pulmonary hypertension, a phenotype that was rescued by restoring miR-143 levels [118].

Interestingly, signaling from endothelial cells to SMCs concerning miR-143 and miR-145 has also been investigated in atherosclerosis research [119]. Transduction of HUVECs with the shear-responsive transcription factor KLF2, or exposure of HUVECS to flow caused an increase in miR-143 and miR-145, indicating a flow responsiveness of the miR-143 and miR-145 expression [119]. Additionally, endothelial cells secreted miR-143 and miR-145 in microvesicles and targeted gene expression in SMCs. Moreover, when treating *ApoE*^{-/-} mice with endothelial secreted vesicles containing, amongst others, miR-143 and miR-145, the mice developed less atherosclerosis [120]. The SMCs of the knockout mice displayed increased migration and proliferation. Analyses of the mouse aortas showed EMC degradation in the miR-143 and miR-145 deficient mice. These results support the findings of a role for miR-143 and miR-145 in inducing a contractile SMC phenotype [120]. Furthermore, in TAA miR-143 and miR-145 were found to be decreased compared to non-dilated samples [120]. The impact these miRs have on SMC phenotype, the expression regulation by flow and their secretion by endothelial cells as well as the decrease in TAA, makes them relevant and interesting for BAV TAA research. The first study towards BAV and miR-143 and miR-145 was recently published, describing a local decrease of miR-143 and miR-145 in the inner curve of the BAV aorta compared to the outer curve. Moreover, they also found altered miR expression affecting mechanotransduction [121].

Intriguingly, mechanotransduction has also been of interest in HHT research. HHT, a vascular haploinsufficiency disease characterized by frequent severe bleedings due to fragile and tortuous blood vessels. Disturbed TGF-beta signaling plays a major role in the development of these malformed blood vessels. 80% of HHT patients have a mutation in *ENG* (HHT1) or *ALK1* (HHT2) [122]. The

endothelial cell-SMC communication is disrupted in HHT, and recruiting and differentiation of SMCs falters causing improperly formed vessels. Disturbed mechanotransduction in endothelial cells has been shown to impact BMP/Smad1/5 signaling as well as vessel stabilization in HHT [123]. By subjecting endothelial cells to shear stress, SMAD1 was activated. Moreover, decreasing either ALK1 or endoglin both inhibited the SMAD1 activation in response to flow. Interestingly, when co-cultured with pericytes, both ALK1 and endoglin were found to be crucial for endothelial shear stress induced migration and proliferation of these pericytes [123]. It would be highly interesting to investigate if BAV endothelial cells also have an intrinsic mechanotransduction defect causing the aorta to be prone to TAA development. The study by Albinsson and colleagues showing the altered miR related to mechanotransduction in BAV aorta samples is an important first step to lead the BAV TAA research field towards relevant studies on mechanotransduction defects possibly explaining (part of the) BAV TAA pathogenesis.

Conclusions and future perspectives

BAV is a common congenital cardiac malformation and the majority of BAV patients develop TAA over time. Although the last decade has witnessed the discovery of several key findings in the field of BAV-associated TAAs, the cellular and molecular mechanisms in BAV-associated TAAs that drive the degeneration of media of the vessel wall are still largely unknown. Many studies have focussed on changes in the signaling pathways in SMCs, however the importance of endothelial cells and their contribution to the initiation and progression of BAV-associated TAAs has not been appreciated in detail.

Under normal physiological conditions, endothelial cells and SMCs communicate with each other for optimal function of the vessel wall in order to maintain homeostasis in the circulatory system. Dysregulation of this communication can lead to medial degeneration and aortic aneurysm, clearly demonstrated in animal models using ANGII infusion or eNOS uncoupling. Interestingly, blocking TGF β signaling is a possible treatment option to prevent TAA formation, as evidenced by multiple animal studies mentioned before. Patient samples also indicate a pivotal role for these pathways as revealed by the dysregulation of eNOS, Notch1 and TGF β signaling proteins in the BAV aortic tissue. The involvement of these pathways is validated by the mutations that have been shown to cause BAV and/or TAA in mouse models and the finding of mutations in these genes in patients with BAV and TAA. In addition to these observations made *in vivo*, *in vitro* studies using patient derived endothelial cells indicate an EndoMT defect in cultured cells from BAV patients. In conclusion, all studies to date indicate great

potential of an underexplored research field concerning the endothelial-smooth muscle cell communication in the BAV TAA formation.

While hardly studied in BAV, the importance of endothelial functioning for vessel homeostasis has been elucidated in other vascular disorders such as PAH, HHT and atherosclerosis. In line with the latest research in these fields, it would be very interesting to investigate if the mechanotransduction and/or microvesicle secretion is altered in endothelial cells of BAV TAA patients. Unfortunately, research towards endothelial cell contribution in BAV TAA pathogenesis has been hampered by the difficulty of obtaining non-end stage study material. The discovery of circulating endothelial progenitor cells (EPCs) and endothelial colony forming cells (ECFCs) will, however, provide a new study model, facilitating patient specific analysis of the endothelial contribution to the disease [124,125]. Thus far, one study was published using these circulatory cells from BAV patients. An impaired EPC migration and colony formation potential was shown when the cells were isolated from BAV patients with a dysfunctional valve compared to BAV patients with a normal functioning valve [126]. Currently, the cause and effect of impaired EPCs is unknown, and more research is required to understand the full potential of circulating endothelial progenitor cells in BAV TAA pathogenesis and their use as a biomarker for patient stratification.

Although few studies on the role of endothelium in BAV disease and its associated TAAs have been performed in the last decade, some seminal papers have been published. In this review, we have created an overview of the recent studies implicating endothelial cells as a pivotal player of vascular homeostasis, and their underappreciated role in TAA pathogenesis in patients with a BAV. Figure 3 schematically depicts the different factors and processes involved in BAV TAA development as discussed throughout this review. Up to date, we are still unable to stratify and cure these patients. Therefore, further research is required to understand the role of endothelial cells and comprehend the interplay between endothelial cells and SMCs in BAV-associated TAA. In conclusion, appreciation of the role of endothelium is crucial for a better understanding of BAV TAA pathogenesis, which is necessary in development of new therapeutic strategies for the BAV-associated TAAs.

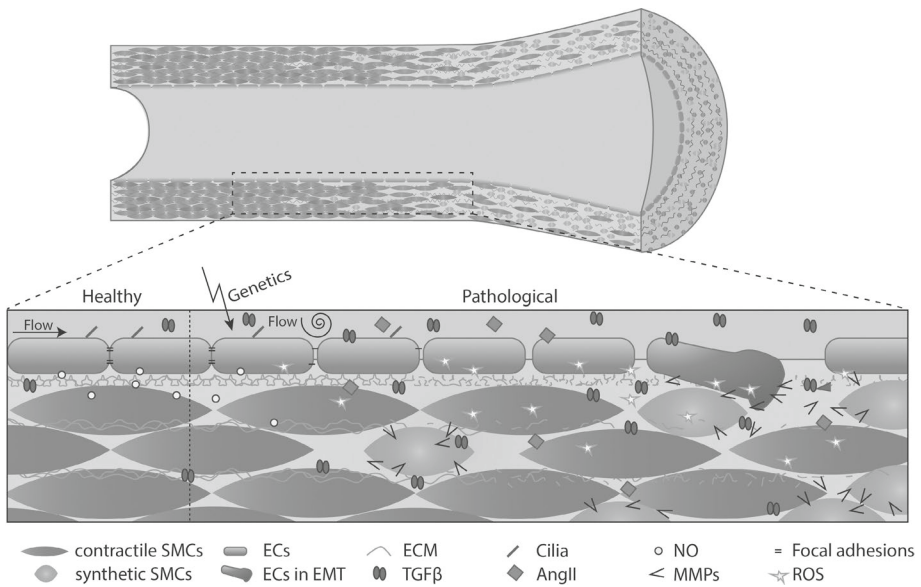


Figure 3. Schematic overview of events in development of aortic dilation. Schematic overview of an aorta over time. Initiation by flow and/or genetics causes endothelial cell dysfunction, affecting the aortic structure i.e. causing synthetic SMCs and lamellar fragmentation.

Acknowledgements

We acknowledge support from the Netherlands CardioVascular Research Initiative: the Dutch Heart Foundation, Dutch Federation of University Medical Centers, the Netherlands Organization for Health Research and Development, and the Royal Netherlands Academy of Sciences Grant CVON-PHAEDRA (CVON 2012-08) and the Dutch heart foundation grant number 2013T093 awarded to the BAV consortium.

References

1. Basso, C, et al. (2004). An echocardiographic survey of primary school children for bicuspid aortic valve. *Am J Cardiol*
2. Roberts, WC. (1970). The congenitally bicuspid aortic valve. A study of 85 autopsy cases. *Am J Cardiol*
3. Saliba, E, et al. (2015). The ascending aortic aneurysm: When to intervene? *IJC Heart & Vasculature*
4. Yuan, SM, et al. (2010). The bicuspid aortic valve and its relation to aortic dilation. *Clinics (Sao Paulo)*
5. Lewin, MB, et al. (2005). The bicuspid aortic valve: Adverse outcomes from infancy to old age. *Circulation*
6. Wagsater, D, et al. (2013). Impaired collagen biosynthesis and cross-linking in aorta of patients with bicuspid aortic valve. *J Am Heart Assoc*
7. Tsamis, A, et al. (2016). Extracellular matrix fiber microarchitecture is region-specific in bicuspid aortic valve-associated ascending aortopathy. *J Thorac Cardiovasc Surg*
8. Grewal, N, et al. (2014). Ascending aorta dilation in association with bicuspid aortic valve: A maturation defect of the aortic wall. *J Thorac Cardiovasc Surg*
9. Guo, DC, et al. (2006). Pathogenesis of thoracic and abdominal aortic aneurysms. *Ann N Y Acad Sci*
10. Girdauskas, E, et al. (2011). Is aortopathy in bicuspid aortic valve disease a congenital defect or a result of abnormal hemodynamics? A critical reappraisal of a one-sided argument. *Eur J Cardiothorac Surg*
11. Girdauskas, E, et al. (2011). Transforming growth factor-beta receptor type ii mutation in a patient with bicuspid aortic valve disease and intraoperative aortic dissection. *Ann Thorac Surg*
12. Tan, HL, et al. (2012). Nonsynonymous variants in the smad6 gene predispose to congenital cardiovascular malformation. *Hum Mutat*
13. Andelfinger, G, et al. (2016). A decade of discovery in the genetic understanding of thoracic aortic disease. *Can J Cardiol*
14. Huntington, K, et al. (1997). A prospective study to assess the frequency of familial clustering of congenital bicuspid aortic valve. *J Am Coll Cardiol*
15. Calloway, TJ, et al. (2011). Risk factors for aortic valve disease in bicuspid aortic valve: A family-based study. *Am J Med Genet A*
16. Biner, S, et al. (2009). Aortopathy is prevalent in relatives of bicuspid aortic valve patients. *J Am Coll Cardiol*
17. Ruddy, JM, et al. (2013). Pathophysiology of thoracic aortic aneurysm (taa): Is it not one uniform aorta? Role of embryologic origin. *Prog Cardiovasc Dis*
18. El-Hamamsy, I, et al. (2009). Cellular and molecular mechanisms of thoracic aortic aneurysms. *Nat Rev Cardiol*

19. Wolinsky, H. (1970). Comparison of medial growth of human thoracic and abdominal aortas. *Circ Res*
20. Halloran, BG, et al. (1995). Localization of aortic disease is associated with intrinsic differences in aortic structure. *J Surg Res*
21. Egorova, AD, et al. (2012). Primary cilia as biomechanical sensors in regulating endothelial function. *Differentiation*
22. Egorova, AD, et al. (2011). Lack of primary cilia primes shear-induced endothelial-to-mesenchymal transition. *Circ Res*
23. Toomer, KA, et al. (2017). A role for primary cilia in aortic valve development and disease.
24. Barker, AJ, et al. (2012). Bicuspid aortic valve is associated with altered wall shear stress in the ascending aorta. *Circ Cardiovasc Imaging*
25. Langille, BL, et al. (1986). Reductions in arterial diameter produced by chronic decreases in blood flow are endothelium-dependent. *Science*
26. Baeyens, N, et al. (2016). Endothelial fluid shear stress sensing in vascular health and disease. *J Clin Invest*
27. Chistiakov, DA, et al. (2017). Effects of shear stress on endothelial cells: Go with the flow. *Acta Physiol (Oxf)*
28. Tsai, MC, et al. (2009). Shear stress induces synthetic-to-contractile phenotypic modulation in smooth muscle cells via peroxisome proliferator-activated receptor alpha/delta activations by prostacyclin released by sheared endothelial cells. *Circ Res*
29. Zhou, J, et al. (2013). Regulation of vascular smooth muscle cell turnover by endothelial cell-secreted microRNA-126: Role of shear stress. *Circ Res*
30. Noris, M, et al. (1995). Nitric oxide synthesis by cultured endothelial cells is modulated by flow conditions. *Circ Res*
31. Walshe, TE, et al. (2013). The role of shear-induced transforming growth factor-beta signaling in the endothelium. *Arterioscler Thromb Vasc Biol*
32. Jansen, F, et al. (2017). Intercellular transfer of mir-126-3p by endothelial microparticles reduces vascular smooth muscle cell proliferation and limits neointima formation by inhibiting Irf6. *J Mol Cell Cardiol*
33. Alegret, JM, et al. (2016). Circulating endothelial microparticles are elevated in bicuspid aortic valve disease and related to aortic dilation. *Int J Cardiol*
34. Bernal-Mizrachi, L, et al. (2003). High levels of circulating endothelial microparticles in patients with acute coronary syndromes. *Am Heart J*
35. Rossig, L, et al. (2000). Congestive heart failure induces endothelial cell apoptosis: Protective role of carvedilol. *J Am Coll Cardiol*
36. Tramontano, AF, et al. (2010). Circulating endothelial microparticles in diabetes mellitus. *Mediators Inflamm*

37. Hashikabe, Y, et al. (2006). Aldosterone impairs vascular endothelial cell function. *J Cardiovasc Pharmacol*
38. Daugherty, A, et al. (2000). Angiotensin ii promotes atherosclerotic lesions and aneurysms in apolipoprotein e-deficient mice. *J Clin Invest*
39. Daugherty, A, et al. (2010). Angiotensin ii infusion promotes ascending aortic aneurysms: Attenuation by ccr2 deficiency in apoe^{-/-} mice. *Clin Sci (Lond)*
40. Leibovitz, E, et al. (2009). Aldosterone induces arterial stiffness in absence of oxidative stress and endothelial dysfunction. *J Hypertens*
41. Chou, CH, et al. (2015). Aldosterone impairs vascular smooth muscle function: From clinical to bench research. *J Clin Endocrinol Metab*
42. Patel, VB, et al. (2014). Angiotensin-converting enzyme 2 is a critical determinant of angiotensin ii-induced loss of vascular smooth muscle cells and adverse vascular remodeling. *Hypertension*
43. Foffa, I, et al. (2012). Angiotensin-converting enzyme insertion/deletion polymorphism is a risk factor for thoracic aortic aneurysm in patients with bicuspid or tricuspid aortic valves. *J Thorac Cardiovasc Surg*
44. Matsumoto, T, et al. (2015). Effect of aldosterone-producing adenoma on endothelial function and rho-associated kinase activity in patients with primary aldosteronism. *Hypertension*
45. Rateri, DL, et al. (2011). Endothelial cell-specific deficiency of ang ii type 1a receptors attenuates ang ii-induced ascending aortic aneurysms in ldl receptor^{-/-} mice. *Circ Res*
46. Rateri, DL, et al. (2012). Depletion of endothelial or smooth muscle cell-specific angiotensin ii type 1a receptors does not influence aortic aneurysms or atherosclerosis in ldl receptor deficient mice. *PLoS One*
47. Police, SB, et al. (2009). Obesity promotes inflammation in periaortic adipose tissue and angiotensin ii-induced abdominal aortic aneurysm formation. *Arterioscler Thromb Vasc Biol*
48. Tieu, BC, et al. (2009). An adventitial il-6/mcp1 amplification loop accelerates macrophage-mediated vascular inflammation leading to aortic dissection in mice. *J Clin Invest*
49. Tanaka, H, et al. (2015). Hypoperfusion of the adventitial vasa vasorum develops an abdominal aortic aneurysm. *PLoS One*
50. Sawada, H, et al. (2017). Smooth muscle cells derived from second heart field and cardiac neural crest reside in spatially distinct domains in the media of the ascending aorta-brief report. *Arterioscler Thromb Vasc Biol*

51. Escudero, P, et al. (2015). Combined treatment with bexarotene and rosuvastatin reduces angiotensin-ii-induced abdominal aortic aneurysm in apoe(-/-) mice and angiogenesis. *Br J Pharmacol*
52. Nataatmadja, M, et al. (2013). Angiotensin ii receptor antagonism reduces transforming growth factor beta and smad signaling in thoracic aortic aneurysm. *Ochsner J*
53. Habashi, JP, et al. (2006). Losartan, an at1 antagonist, prevents aortic aneurysm in a mouse model of marfan syndrome. *Science*
54. Gao, L, et al. (2016). The effect of losartan on progressive aortic dilatation in patients with marfan's syndrome: A meta-analysis of prospective randomized clinical trials. *Int J Cardiol*
55. Niessen, K, et al. (2008). Notch signaling in cardiac development. *Circ Res*
56. Nosedá, M, et al. (2004). Notch activation results in phenotypic and functional changes consistent with endothelial-to-mesenchymal transformation. *Circ Res*
57. Tang, Y, et al. (2010). Notch and transforming growth factor-beta (tgfbeta) signaling pathways cooperatively regulate vascular smooth muscle cell differentiation. *J Biol Chem*
58. Krebs, LT, et al. (2000). Notch signaling is essential for vascular morphogenesis in mice. *Genes Dev*
59. High, FA, et al. (2009). Murine jagged1/notch signaling in the second heart field orchestrates fgf8 expression and tissue-tissue interactions during outflow tract development. *J Clin Invest*
60. High, FA, et al. (2008). Endothelial expression of the notch ligand jagged1 is required for vascular smooth muscle development. *Proc Natl Acad Sci U S A*
61. Niessen, K, et al. (2008). Slug is a direct notch target required for initiation of cardiac cushion cellularization. *J Cell Biol*
62. Koenig, SN, et al. (2017). Genetic basis of aortic valvular disease. *Curr Opin Cardiol*
63. Gillis, E, et al. (2017). Candidate gene resequencing in a large bicuspid aortic valve-associated thoracic aortic aneurysm cohort: Smad6 as an important contributor. *Front Physiol*
64. Garg, V, et al. (2005). Mutations in notch1 cause aortic valve disease. *Nature*
65. Koenig, SN, et al. (2015). Evidence of aortopathy in mice with haploinsufficiency of notch1 in nos3-null background. *J Cardiovasc Dev Dis*
66. Koenig, SN, et al. (2016). Endothelial notch1 is required for proper development of the semilunar valves and cardiac outflow tract. *J Am Heart Assoc*
67. Nigam, V, et al. (2009). Notch1 represses osteogenic pathways in aortic valve cells. *J Mol Cell Cardiol*
68. Kent, KC, et al. (2013). Genotype-phenotype correlation in patients with bicuspid aortic valve and aneurysm. *J Thorac Cardiovasc Surg*

69. Oudit, GY, et al. (2006). Calcific bicuspid aortic valve disease in a patient with cornea de lange syndrome: Linking altered notch signaling to aortic valve disease. *Cardiovasc Pathol*
70. Maleki, S, et al. (2016). Mesenchymal state of intimal cells may explain higher propensity to ascending aortic aneurysm in bicuspid aortic valves. *Sci Rep*
71. Kostina, AS, et al. (2016). Notch-dependent emt is attenuated in patients with aortic aneurysm and bicuspid aortic valve. *Biochim Biophys Acta*
72. Wang, YW, et al. (2015). Combining detection of notch1 and tumor necrosis factor-alpha converting enzyme is a reliable biomarker for the diagnosis of abdominal aortic aneurysms. *Life Sci*
73. Hans, CP, et al. (2012). Inhibition of notch1 signaling reduces abdominal aortic aneurysm in mice by attenuating macrophage-mediated inflammation. *Arterioscler Thromb Vasc Biol*
74. Cheng, J, et al. (2014). Pharmacological inhibitor of notch signaling stabilizes the progression of small abdominal aortic aneurysm in a mouse model. *J Am Heart Assoc*
75. Zou, S, et al. (2012). Notch signaling in descending thoracic aortic aneurysm and dissection. *PLoS One*
76. Bogdan, C. (2001). Nitric oxide and the regulation of gene expression. *Trends Cell Biol*
77. Shin, WS, et al. (1996). Nitric oxide attenuates vascular smooth muscle cell activation by interferon-gamma. The role of constitutive nf-kappa b activity. *J Biol Chem*
78. Billaud, M, et al. (2017). Elevated oxidative stress in the aortic media of patients with bicuspid aortic valve. *J Thorac Cardiovasc Surg*
79. Gao, L, et al. (2012). Role of uncoupled endothelial nitric oxide synthase in abdominal aortic aneurysm formation: Treatment with folic acid. *Hypertension*
80. Lee, JK, et al. (2001). Experimental abdominal aortic aneurysms in mice lacking expression of inducible nitric oxide synthase. *Arterioscler Thromb Vasc Biol*
81. Siu, KL, et al. (2014). Circulating tetrahydrobiopterin as a novel biomarker for abdominal aortic aneurysm. *Am J Physiol Heart Circ Physiol*
82. Fan, LM, et al. (2014). Endothelial cell-specific reactive oxygen species production increases susceptibility to aortic dissection. *Circulation*
83. Lee, TC, et al. (2000). Abnormal aortic valve development in mice lacking endothelial nitric oxide synthase. *Circulation*
84. Licholai, S, et al. (2016). Unbiased profile of microRNA expression in ascending aortic aneurysm tissue appoints molecular pathways contributing to the pathology. *Ann Thorac Surg*
85. Weber, M, et al. (2010). Mir-21 is induced in endothelial cells by shear stress and modulates apoptosis and enos activity. *Biochem Biophys Res Commun*
86. Kotlarczyk, MP, et al. (2016). Regional disruptions in endothelial nitric oxide pathway associated with bicuspid aortic valve. *Ann Thorac Surg*

87. Kim, YH, et al. (2016). Clinical implication of aortic wall biopsy in aortic valve disease with bicuspid valve pathology. *Korean J Thorac Cardiovasc Surg*
88. Aicher, D, et al. (2007). Endothelial nitric oxide synthase in bicuspid aortic valve disease. *Ann Thorac Surg*
89. Mohamed, SA, et al. (2012). Locally different endothelial nitric oxide synthase protein levels in ascending aortic aneurysms of bicuspid and tricuspid aortic valve. *Cardiol Res Pract*
90. Goumans, MJ, et al. (2017). Tgf-beta signaling in control of cardiovascular function. *Cold Spring Harb Perspect Biol*
91. Goumans, MJ, et al. (2002). Balancing the activation state of the endothelium via two distinct tgf-beta type i receptors. *Embo j*
92. Watabe, T, et al. (2003). Tgf-beta receptor kinase inhibitor enhances growth and integrity of embryonic stem cell-derived endothelial cells. *J Cell Biol*
93. Hirschi, KK, et al. (1998). Pdgf, tgf-beta, and heterotypic cell-cell interactions mediate endothelial cell-induced recruitment of 10t1/2 cells and their differentiation to a smooth muscle fate. *J Cell Biol*
94. Guo, X, et al. (2012). Transforming growth factor-beta and smooth muscle differentiation. *World J Biol Chem*
95. Brown, DJ, et al. (2005). Endothelial cell activation of the smooth muscle cell phosphoinositide 3-kinase/akt pathway promotes differentiation. *J Vasc Surg*
96. Goumans, MJ, et al. (2003). Activin receptor-like kinase (alk)1 is an antagonistic mediator of lateral tgfbeta/alk5 signaling. *Mol Cell*
97. Lebrin, F, et al. (2004). Endoglin promotes endothelial cell proliferation and tgf-beta/alk1 signal transduction. *Embo j*
98. Li, DY, et al. (1999). Defective angiogenesis in mice lacking endoglin. *Science*
99. Arthur, HM, et al. (2000). Endoglin, an ancillary tgfbeta receptor, is required for extraembryonic angiogenesis and plays a key role in heart development. *Dev Biol*
100. Nomura-Kitabayashi, A, et al. (2009). Endoglin is dispensable for angiogenesis, but required for endocardial cushion formation in the midgestation mouse embryo. *Dev Biol*
101. Wooten, EC, et al. (2010). Application of gene network analysis techniques identifies axin1/pdia2 and endoglin haplotypes associated with bicuspid aortic valve. *PLoS One*
102. Paloschi, V, et al. (2015). Aneurysm development in patients with a bicuspid aortic valve is not associated with transforming growth factor-beta activation. *Arterioscler Thromb Vasc Biol*
103. Rocchiccioli, S, et al. (2017). Hypothesis-free secretome analysis of thoracic aortic aneurysm reinforces the central role of tgf-beta cascade in patients with bicuspid aortic valve. *J Cardiol*

104. Rueda-Martinez, C, et al. (2017). Increased blood levels of transforming growth factor beta in patients with aortic dilatation. *Interact Cardiovasc Thorac Surg*
105. Hillebrand, M, et al. (2014). Total serum transforming growth factor-beta1 is elevated in the entire spectrum of genetic aortic syndromes. *Clin Cardiol*
106. Ramnath, NW, et al. (2015). Fibulin-4 deficiency increases tgf-beta signalling in aortic smooth muscle cells due to elevated tgf-beta2 levels. *Sci Rep*
107. Chen, X, et al. (2016). Tgf-beta neutralization enhances angii-induced aortic rupture and aneurysm in both thoracic and abdominal regions. *PLoS One*
108. Lazar-Karsten, P, et al. (2016). Generation and characterization of vascular smooth muscle cell lines derived from a patient with a bicuspid aortic valve. *Cells*
109. Matt, P, et al. (2009). Circulating transforming growth factor-beta in marfan syndrome. *Circulation*
110. Yao, EH, et al. (2009). A pyrrole-imidazole polyamide targeting transforming growth factor-beta1 inhibits restenosis and preserves endothelialization in the injured artery. *Cardiovasc Res*
111. Yung, LM, et al. (2016). A selective transforming growth factor-beta ligand trap attenuates pulmonary hypertension.
112. Morrell, NW, et al. (2009). Cellular and molecular basis of pulmonary arterial hypertension. *J Am Coll Cardiol*
113. Xu, W, et al. (2011). Endothelial cell energy metabolism, proliferation, and apoptosis in pulmonary hypertension. *Compr Physiol*
114. Sakao, S, et al. (2009). Endothelial cells and pulmonary arterial hypertension: Apoptosis, proliferation, interaction and transdifferentiation. *Respir Res*
115. Eddahibi, S, et al. (2006). Cross talk between endothelial and smooth muscle cells in pulmonary hypertension: Critical role for serotonin-induced smooth muscle hyperplasia. *Circulation*
116. Boettger, T, et al. (2009). Acquisition of the contractile phenotype by murine arterial smooth muscle cells depends on the mir143/145 gene cluster. *J Clin Invest*
117. Climent, M, et al. (2015). Tgfbeta triggers mir-143/145 transfer from smooth muscle cells to endothelial cells, thereby modulating vessel stabilization. *Circ Res*
118. Deng, L, et al. (2015). MicroRNA-143 activation regulates smooth muscle and endothelial cell crosstalk in pulmonary arterial hypertension. *Circ Res*
119. Hergenreider, E, et al. (2012). Atheroprotective communication between endothelial cells and smooth muscle cells through mirnas. *Nat Cell Biol*
120. Elia, L, et al. (2009). The knockout of mir-143 and -145 alters smooth muscle cell maintenance and vascular homeostasis in mice: Correlates with human disease. *Cell Death Differ*
121. Albinsson, S, et al. (2017). Patients with bicuspid and tricuspid aortic valve exhibit distinct regional microRNA signatures in mildly dilated ascending aorta.

122. McDonald, J, et al. (2015). Hereditary hemorrhagic telangiectasia: Genetics and molecular diagnostics in a new era. *Front Genet*
123. Baeyens, N, et al. (2016). Defective fluid shear stress mechanotransduction mediates hereditary hemorrhagic telangiectasia. *J Cell Biol*
124. Asahara, T, et al. (1997). Isolation of putative progenitor endothelial cells for angiogenesis. *Science*
125. Ingram, DA, et al. (2004). Identification of a novel hierarchy of endothelial progenitor cells using human peripheral and umbilical cord blood. *Blood*
126. Vaturi, M, et al. (2011). Circulating endothelial progenitor cells in patients with dysfunctional versus normally functioning congenitally bicuspid aortic valves. *Am J Cardiol*
127. Thomas, PS, et al. (2012). Deficient signaling via alk2 (acvr1) leads to bicuspid aortic valve development. *PLoS One*
128. Yao, Y, et al. (2008). High-density lipoproteins affect endothelial bmp-signaling by modulating expression of the activin-like kinase receptor 1 and 2. *Arterioscler Thromb Vasc Biol*
129. Medici, D, et al. (2010). Conversion of vascular endothelial cells into multipotent stem-like cells. *Nat Med*
130. Pece-Barbara, N, et al. (2005). Endoglin null endothelial cells proliferate faster and are more responsive to transforming growth factor beta1 with higher affinity receptors and an activated alk1 pathway. *J Biol Chem*
131. Jin, Y, et al. (2017). Endoglin prevents vascular malformation by regulating flow-induced cell migration and specification through vegfr2 signalling.
132. Attias, D, et al. (2009). Comparison of clinical presentations and outcomes between patients with tgfr2 and fbn1 mutations in marfan syndrome and related disorders. *Circulation*
133. Allinson, KR, et al. (2012). Endothelial expression of tgfbeta type ii receptor is required to maintain vascular integrity during postnatal development of the central nervous system. *PLoS One*
134. Topper, JN, et al. (1997). Vascular mads: Two novel mad-related genes selectively inducible by flow in human vascular endothelium. *Proc Natl Acad Sci U S A*
135. Dupuis, LE, et al. (2013). Insufficient versican cleavage and smad2 phosphorylation results in bicuspid aortic and pulmonary valves. *J Mol Cell Cardiol*
136. Itoh, F, et al. (2012). Smad2/smad3 in endothelium is indispensable for vascular stability via slpr1 and n-cadherin expressions. *Blood*
137. Forstermann, U, et al. (2006). Endothelial nitric oxide synthase in vascular disease: From marvel to menace. *Circulation*
138. Shi, LM, et al. (2014). Gata5 loss-of-function mutations associated with congenital bicuspid aortic valve. *Int J Mol Med*

139. Bonachea, EM, et al. (2014). Rare gata5 sequence variants identified in individuals with bicuspid aortic valve. *Pediatr Res*
140. Laforest, B, et al. (2012). Genetic insights into bicuspid aortic valve formation. *Cardiol Res Pract*
141. Messaoudi, S, et al. (2015). Endothelial gata5 transcription factor regulates blood pressure.
142. Theodoris, CV, et al. (2015). Human disease modeling reveals integrated transcriptional and epigenetic mechanisms of notch1 haploinsufficiency. *Cell*
143. Qu, XK, et al. (2014). A novel nkx2.5 loss-of-function mutation associated with congenital bicuspid aortic valve. *Am J Cardiol*
144. Guo, DC, et al. (2007). Mutations in smooth muscle alpha-actin (acta2) lead to thoracic aortic aneurysms and dissections. *Nat Genet*

