



Universiteit
Leiden
The Netherlands

Glycoproteomics-based signatures of cancer cell lines

Pirro, M.

Citation

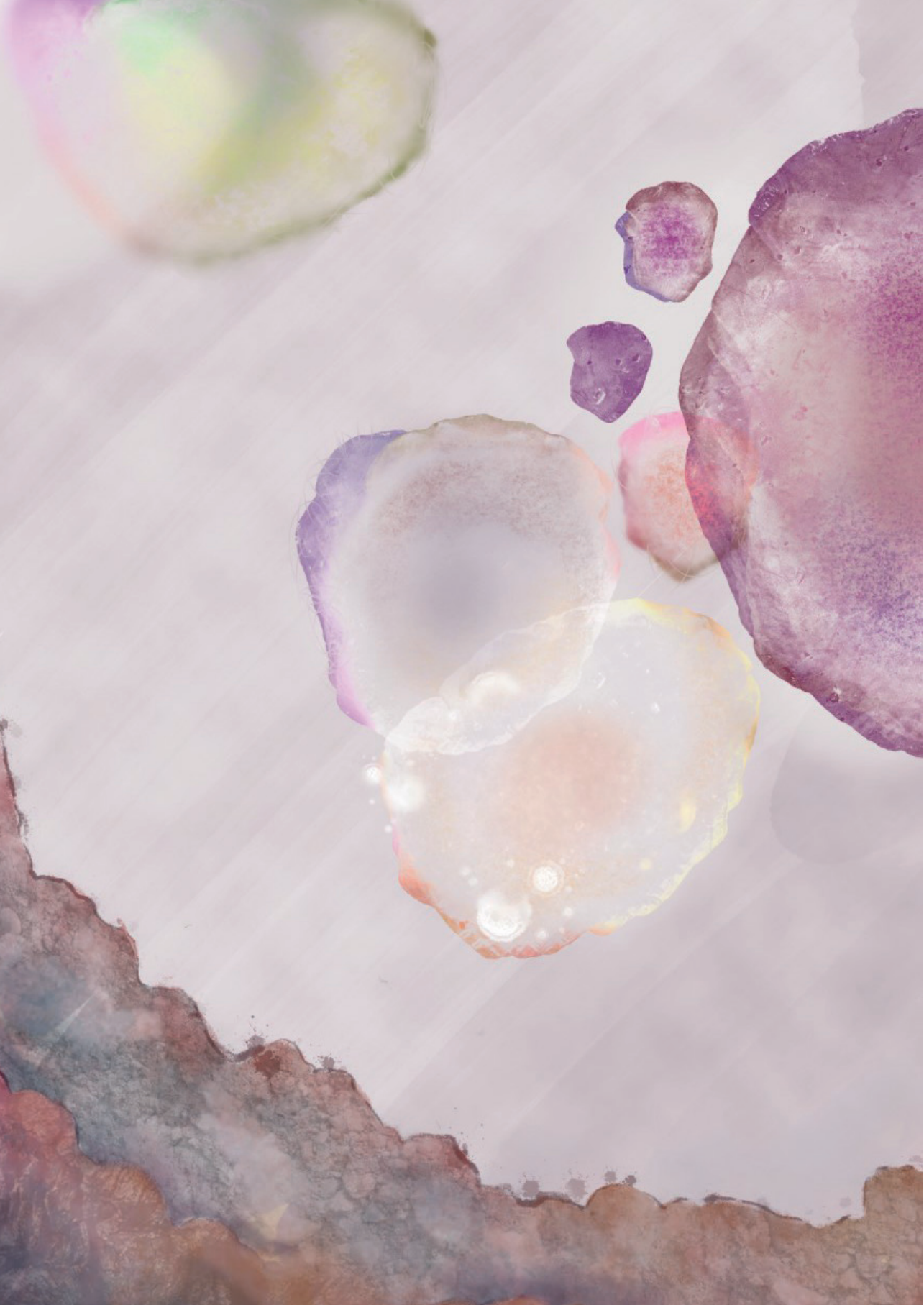
Pirro, M. (2021, September 21). *Glycoproteomics-based signatures of cancer cell lines*. Retrieved from <https://hdl.handle.net/1887/3212951>

Version: Publisher's Version

License: [Licence agreement concerning inclusion of doctoral thesis in the Institutional Repository of the University of Leiden](#)

Downloaded from: <https://hdl.handle.net/1887/3212951>

Note: To cite this publication please use the final published version (if applicable).



References

1. Stowell, S.R., T. Ju, and R.D. Cummings, *Protein glycosylation in cancer*. *Annu Rev Pathol*, 2015. **10**: p. 473-510.
2. Colley, K.J., A. Varki, and T. Kinoshita, *Cellular Organization of Glycosylation*, in *Essentials of Glycobiology*, rd, et al., Editors. 2015: Cold Spring Harbor (NY). p. 41-49.
3. Varki, A., *Biological roles of glycans*. *Glycobiology*, 2017. **27**(1): p. 3-49.
4. Moremen, K.W., M. Tiemeyer, and A.V. Nairn, *Vertebrate protein glycosylation: diversity, synthesis and function*. *Nat Rev Mol Cell Biol*, 2012. **13**(7): p. 448-62.
5. Pinho, S.S. and C.A. Reis, *Glycosylation in cancer: mechanisms and clinical implications*. *Nat Rev Cancer*, 2015. **15**(9): p. 540-55.
6. Stanley, P., N. Taniguchi, and M. Aebi, *N-Glycans*, in *Essentials of Glycobiology*, rd, et al., Editors. 2015: Cold Spring Harbor (NY). p. 99-111.
7. Spiro, R.G., *Protein glycosylation: nature, distribution, enzymatic formation, and disease implications of glycopeptide bonds*. *Glycobiology*, 2002. **12**(4): p. 43R-56R.
8. Stanley, P. and R.D. Cummings, *Structures Common to Different Glycans*, in *Essentials of Glycobiology*, rd, et al., Editors. 2015: Cold Spring Harbor (NY). p. 161-178.
9. Brockhausen, I. and P. Stanley, *O-GalNAc Glycans*, in *Essentials of Glycobiology*, rd, et al., Editors. 2015: Cold Spring Harbor (NY). p. 113-123.
10. Ferreira, J.A., et al., *Protein glycosylation in gastric and colorectal cancers: Toward cancer detection and targeted therapeutics*. *Cancer Lett*, 2017. **387**: p. 32-45.
11. Beckwith, D.M. and M. Cudic, *Tumor-associated O-glycans of MUC1: Carriers of the glyco-code and targets for cancer vaccine design*. *Semin Immunol*, 2020: p. 101389.
12. Holst, S., M. Wuhrer, and Y. Rombouts, *Glycosylation characteristics of colorectal cancer*. *Adv Cancer Res*, 2015. **126**: p. 203-56.
13. Hirano, K., et al., *Expression of LacdiNAc groups on N-glycans among human tumors is complex*. *Biomed Res Int*, 2014. **2014**: p. 981627.
14. Jin, C., et al., *Structural Diversity of Human Gastric Mucin Glycans*. *Mol Cell Proteomics*, 2017. **16**(5): p. 743-758.
15. Blanas, A., et al., *Fucosylated Antigens in Cancer: An Alliance toward Tumor Progression, Metastasis, and Resistance to Chemotherapy*. *Front Oncol*, 2018. **8**: p. 39.
16. Munkley, J. and D.J. Elliott, *Hallmarks of glycosylation in cancer*. *Oncotarget*, 2016. **7**(23): p. 35478-89.
17. Sawanobori, A., et al., *A glycoproteomic approach to identify novel glycomarkers for cancer stem cells*. *Proteomics*, 2016. **16**(24): p. 3073-3080.
18. Banazadeh, A., et al., *Recent advances in mass spectrometric analysis of glycoproteins*. *Electrophoresis*, 2017. **38**(1): p. 162-189.
19. Niessen, J.K.a.W., *Analyzing Biomolecular Interactions by Mass Spectrometry*. 2015: Wiley-VCH.
20. Wuhrer, M., et al., *Glycoproteomics based on tandem mass spectrometry of glycopeptides*. *J Chromatogr B Analyt Technol Biomed Life Sci*, 2007. **849**(1-2): p. 115-28.
21. Jensen, P.H., et al., *Structural analysis of N- and O-glycans released from glycoproteins*. *Nat Protoc*, 2012. **7**(7): p. 1299-310.
22. Rudd, P., et al., *Glycomics and Glycoproteomics*, in *Essentials of Glycobiology*, rd, et al., Editors. 2015: Cold Spring Harbor (NY). p. 653-666.
23. Hanisch, F.G., et al., *Chemical de-O-glycosylation of glycoproteins for application in LC-based proteomics*. *Proteomics*, 2009. **9**(3): p. 710-9.
24. Pan, S., et al., *Mass spectrometry based glycoproteomics--from a proteomics perspective*. *Mol Cell Proteomics*, 2011. **10**(1): p. R110 003251.

25. McAlister, G.C., et al., *MultiNotch MS3 enables accurate, sensitive, and multiplexed detection of differential expression across cancer cell line proteomes*. *Anal Chem*, 2014. **86**(14): p. 7150-8.
26. Wang, Z., et al., *High-throughput and Deep-proteome Profiling by 16-plex Tandem Mass Tag Labeling Coupled with Two-dimensional Chromatography and Mass Spectrometry*. *J Vis Exp*, 2020(162).
27. Wang, Z., et al., *27-Plex Tandem Mass Tag Mass Spectrometry for Profiling Brain Proteome in Alzheimer's Disease*. *Anal Chem*, 2020. **92**(10): p. 7162-7170.
28. O'Connor, B.F., D. Monaghan, and J. Cawley, *Lectin Affinity Chromatography (LAC)*. *Methods Mol Biol*, 2017. **1485**: p. 411-420.
29. Taylor, M.E., et al., *Discovery and Classification of Glycan-Binding Proteins*, in *Essentials of Glycobiology*, rd, et al., Editors. 2015: Cold Spring Harbor (NY). p. 361-372.
30. Brown, G.D., J.A. Willment, and L. Whitehead, *C-type lectins in immunity and homeostasis*. *Nat Rev Immunol*, 2018. **18**(6): p. 374-389.
31. van Kooyk, Y., J.M. Ilarregui, and S.J. van Vliet, *Novel insights into the immunomodulatory role of the dendritic cell and macrophage-expressed C-type lectin MGL*. *Immunobiology*, 2015. **220**(2): p. 185-92.
32. Liu, F.T. and G.A. Rabinovich, *Galectins as modulators of tumour progression*. *Nat Rev Cancer*, 2005. **5**(1): p. 29-41.
33. Jegouzo, S.A., et al., *Organization of the extracellular portion of the macrophage galactose receptor: a trimeric cluster of simple binding sites for N-acetylgalactosamine*. *Glycobiology*, 2013. **23**(7): p. 853-64.
34. van Vliet, S.J., E. Saeland, and Y. van Kooyk, *Sweet preferences of MGL: carbohydrate specificity and function*. *Trends Immunol*, 2008. **29**(2): p. 83-90.
35. Diniz, A., et al., *The Plasticity of the Carbohydrate Recognition Domain Dictates the Exquisite Mechanism of Binding of Human Macrophage Galactose-Type Lectin*. *Chemistry*, 2019. **25**(61): p. 13945-13955.
36. Marcelo, F., et al., *Identification of a secondary binding site in human macrophage galactose-type lectin by microarray studies: Implications for the molecular recognition of its ligands*. *J Biol Chem*, 2019. **294**(4): p. 1300-1311.
37. Takada, A., et al., *Human macrophage C-type lectin specific for galactose and N-acetylgalactosamine promotes filovirus entry*. *J Virol*, 2004. **78**(6): p. 2943-7.
38. van Vliet, S.J., et al., *Carbohydrate profiling reveals a distinctive role for the C-type lectin MGL in the recognition of helminth parasites and tumor antigens by dendritic cells*. *Int Immunol*, 2005. **17**(5): p. 661-9.
39. van Vliet, S.J., et al., *Regulation of effector T cells by antigen-presenting cells via interaction of the C-type lectin MGL with CD45*. *Nat Immunol*, 2006. **7**(11): p. 1200-8.
40. Ju, T., et al., *Tn and sialyl-Tn antigens, aberrant O-glycomics as human disease markers*. *Proteomics Clin Appl*, 2013. **7**(9-10): p. 618-31.
41. Zizzari, I.G., et al., *MGL Receptor and Immunity: When the Ligand Can Make the Difference*. *J Immunol Res*, 2015. **2015**: p. 450695.
42. Beatson, R., et al., *The Breast Cancer-Associated Glycoforms of MUC1, MUC1-Tn and sialyl-Tn, Are Expressed in COSMC Wild-Type Cells and Bind the C-Type Lectin MGL*. *PLoS One*, 2015. **10**(5): p. e0125994.
43. Kurze, A.K., et al., *Immature O-glycans recognized by the macrophage glycoreceptor CLEC10A (MGL) are induced by 4-hydroxy-tamoxifen, oxidative stress and DNA-damage in breast cancer cells*. *Cell Commun Signal*, 2019. **17**(1): p. 107.
44. Sahasrabudhe, N.M., et al., *MGL Ligand Expression Is Correlated to Lower Survival and Distant Metastasis in Cervical Squamous Cell and Adenosquamous Carcinoma*. *Front Oncol*, 2019. **9**: p. 29.

45. Lenos, K., et al., *MGL ligand expression is correlated to BRAF mutation and associated with poor survival of stage III colon cancer patients*. *Oncotarget*, 2015. **6**(28): p. 26278-90.
46. Saeland, E., et al., *The C-type lectin MGL expressed by dendritic cells detects glycan changes on MUC1 in colon carcinoma*. *Cancer Immunol Immunother*, 2007. **56**(8): p. 1225-36.
47. Rawla, P., T. Sunkara, and A. Barsouk, *Epidemiology of colorectal cancer: incidence, mortality, survival, and risk factors*. *Prz Gastroenterol*, 2019. **14**(2): p. 89-103.
48. Labianca, R., et al., *Early colon cancer: ESMO Clinical Practice Guidelines for diagnosis, treatment and follow-up*. *Ann Oncol*, 2013. **24 Suppl 6**: p. vi64-72.
49. Schmoll, H.J., et al., *ESMO Consensus Guidelines for management of patients with colon and rectal cancer. a personalized approach to clinical decision making*. *Ann Oncol*, 2012. **23**(10): p. 2479-2516.
50. Brenner, H., M. Kloor, and C.P. Pox, *Colorectal cancer*. *Lancet*, 2014. **383**(9927): p. 1490-1502.
51. Lech, G., et al., *Colorectal cancer tumour markers and biomarkers: Recent therapeutic advances*. *World J Gastroenterol*, 2016. **22**(5): p. 1745-55.
52. Berg, K.C.G., et al., *Multi-omics of 34 colorectal cancer cell lines - a resource for biomedical studies*. *Mol Cancer*, 2017. **16**(1): p. 116.
53. Holst, S., et al., *N-glycosylation Profiling of Colorectal Cancer Cell Lines Reveals Association of Fucosylation with Differentiation and Caudal Type Homebox 1 (CDX1)/Villin mRNA Expression*. *Mol Cell Proteomics*, 2016. **15**(1): p. 124-40.
54. Madunic, K., et al., *Colorectal cancer cell lines show striking diversity of their O-glycome reflecting the cellular differentiation phenotype*. *Cell Mol Life Sci*, 2020.
55. van Gisbergen, K.P., et al., *Dendritic cells recognize tumor-specific glycosylation of carcinoembryonic antigen on colorectal cancer cells through dendritic cell-specific intercellular adhesion molecule-3-grabbing nonintegrin*. *Cancer Res*, 2005. **65**(13): p. 5935-44.
56. Perdicchio, M., et al., *Sialic acid-modified antigens impose tolerance via inhibition of T-cell proliferation and de novo induction of regulatory T cells*. *Proc Natl Acad Sci U S A*, 2016. **113**(12): p. 3329-34.
57. Cummings, R.D. and R.P. McEver, *C-Type Lectins*, in *Essentials of Glycobiology*, rd, et al., Editors. 2015: Cold Spring Harbor (NY). p. 435-452.
58. Geijtenbeek, T.B. and S.I. Gringhuis, *Signalling through C-type lectin receptors: shaping immune responses*. *Nat Rev Immunol*, 2009. **9**(7): p. 465-79.
59. Reis, C.A., et al., *Alterations in glycosylation as biomarkers for cancer detection*. *J Clin Pathol*, 2010. **63**(4): p. 322-9.
60. Ju, T., et al., *Human tumor antigens Tn and sialyl Tn arise from mutations in Cosmc*. *Cancer Res*, 2008. **68**(6): p. 1636-46.
61. Ju, T., V.I. Otto, and R.D. Cummings, *The Tn antigen-structural simplicity and biological complexity*. *Angew Chem Int Ed Engl*, 2011. **50**(8): p. 1770-91.
62. Fu, C., et al., *Tumor-associated antigens: Tn antigen, sTn antigen, and T antigen*. *HLA*, 2016. **88**(6): p. 275-286.
63. Rabinovich, G.A. and D.O. Croci, *Regulatory circuits mediated by lectin-glycan interactions in autoimmunity and cancer*. *Immunity*, 2012. **36**(3): p. 322-35.
64. Vizcaino, J.A., et al., *2016 update of the PRIDE database and its related tools*. *Nucleic Acids Res*, 2016. **44**(22): p. 11033.
65. Hinneburg, H., et al., *The Art of Destruction: Optimizing Collision Energies in Quadrupole-Time of Flight (Q-TOF) Instruments for Glycopeptide-Based Glycoproteomics*. *J Am Soc Mass Spectrom*, 2016. **27**(3): p. 507-19.
66. Stavenhagen, K., et al., *Site-Specific N- and O-Glycopeptide Analysis Using an Integrated C18-PGC-LC-ESI-QTOF-MS/MS Approach*. *Methods Mol Biol*, 2017. **1503**: p. 109-119.
67. Stavenhagen, K., et al., *N- and O-glycosylation Analysis of Human C1-inhibitor Reveals Extensive Mucin-type O-Glycosylation*. *Mol Cell Proteomics*, 2018. **17**(6): p. 1225-1238.

68. Liu, G., et al., *A Comprehensive, Open-source Platform for Mass Spectrometry-based Glycoproteomics Data Analysis*. Mol Cell Proteomics, 2017. **16**(11): p. 2032-2047.
69. Stadlmann, J., et al., *Comparative glycoproteomics of stem cells identifies new players in ricin toxicity*. Nature, 2017. **549**(7673): p. 538-542.
70. Joshi, H.J., et al., *GlycoDomainViewer: a bioinformatics tool for contextual exploration of glycoproteomes*. Glycobiology, 2018. **28**(3): p. 131-136.
71. Leitenberg, D., et al., *CD45-associated protein promotes the response of primary CD4 T cells to low-potency T-cell receptor (TCR) stimulation and facilitates CD45 association with CD3/TCR and Ick*. Immunology, 2007. **121**(4): p. 545-54.
72. Gradogna, A., et al., *Subunit-dependent oxidative stress sensitivity of LRRC8 volume-regulated anion channels*. J Physiol, 2017. **595**(21): p. 6719-6733.
73. Voss, F.K., et al., *Identification of LRRC8 heteromers as an essential component of the volume-regulated anion channel VRAC*. Science, 2014. **344**(6184): p. 634-8.
74. Zheng, J., H. Xiao, and R. Wu, *Specific Identification of Glycoproteins Bearing the Tn Antigen in Human Cells*. Angew Chem Int Ed Engl, 2017. **56**(25): p. 7107-7111.
75. Marcelo, F., et al., *Delineating binding modes of Gal/GalNAc and structural elements of the molecular recognition of tumor-associated mucin glycopeptides by the human macrophage galactose-type lectin*. Chemistry, 2014. **20**(49): p. 16147-55.
76. Duran-Struuck, R., et al., *A novel role for the semaphorin Sema4D in the induction of allo-responses*. Biol Blood Marrow Transplant, 2007. **13**(11): p. 1294-1303.
77. Kumanogoh, A. and H. Kikutani, *The CD100-CD72 interaction: a novel mechanism of immune regulation*. Trends Immunol, 2001. **22**(12): p. 670-6.
78. Velayos-Baeza, A., et al., *The dyslexia-associated gene KIAA0319 encodes highly N- and O-glycosylated plasma membrane and secreted isoforms*. Hum Mol Genet, 2008. **17**(6): p. 859-71.
79. Zjablovskaia, P., et al., *EVI2B is a C/EBPalpha target gene required for granulocytic differentiation and functionality of hematopoietic progenitors*. Cell Death Differ, 2017. **24**(4): p. 705-716.
80. Hashiguchi, M., et al., *Triggering receptor expressed on myeloid cell-like transcript 2 (TLT-2) is a counter-receptor for B7-H3 and enhances T cell responses*. Proc Natl Acad Sci U S A, 2008. **105**(30): p. 10495-500.
81. Napoletano, C., et al., *Targeting of macrophage galactose-type C-type lectin (MGL) induces DC signaling and activation*. Eur J Immunol, 2012. **42**(4): p. 936-45.
82. van Vliet, S.J., et al., *MGL signaling augments TLR2-mediated responses for enhanced IL-10 and TNF-alpha secretion*. J Leukoc Biol, 2013. **94**(2): p. 315-23.
83. Sahasrabudhe, N.M., et al., *Oncogenic BRAFV600E drives expression of MGL ligands in the colorectal cancer cell line HT29 through N-acetylgalactosamine-transferase 3*. Biol Chem, 2018. **399**(7): p. 649-659.
84. Soga, K., et al., *Terminal N-acetylgalactosamine-specific leguminous lectin from Wisteria japonica as a probe for human lung squamous cell carcinoma*. PLoS One, 2013. **8**(12): p. e83886.
85. Machado, E., et al., *N-Glycosylation of total cellular glycoproteins from the human ovarian carcinoma SKOV3 cell line and of recombinantly expressed human erythropoietin*. Glycobiology, 2011. **21**(3): p. 376-86.
86. Che, M.I., et al., *beta1, 4-N-acetylgalactosaminyltransferase III modulates cancer stemness through EGFR signaling pathway in colon cancer cells*. Oncotarget, 2014. **5**(11): p. 3673-84.
87. Huang, J., et al., *Beta1,4-N-acetylgalactosaminyltransferase III enhances malignant phenotypes of colon cancer cells*. Mol Cancer Res, 2007. **5**(6): p. 543-52.
88. Haji-Ghassemi, O., et al., *Molecular Basis for Recognition of the Cancer Glycobiomarker, LacdiNAc (GalNAc[beta1-->4]GlcNAc), by Wisteria floribunda Agglutinin*. J Biol Chem, 2016. **291**(46): p. 24085-24095.

89. Mortezaei, N., et al., *Tumor-associated Neu5Ac-Tn and Neu5Gc-Tn antigens bind to C-type lectin CLEC10A (CD301, MGL)*. *Glycobiology*, 2013. **23**(7): p. 844-52.
90. Westen, A.A., et al., *Comparing six commercial autosomal STR kits in a large Dutch population sample*. *Forensic Sci Int Genet*, 2014. **10**: p. 55-63.
91. Pirro, M., et al., *Glycoproteomic Analysis of MGL-Binding Proteins on Acute T-Cell Leukemia Cells*. *J Proteome Res*, 2019. **18**(3): p. 1125-1132.
92. Sato, T., et al., *Molecular cloning and characterization of a novel human beta 1,4-N-acetylgalactosaminyltransferase, beta 4GalNAc-T3, responsible for the synthesis of N,N'-diacetyllactosediamine, galNAc beta 1-4GlcNAc*. *J Biol Chem*, 2003. **278**(48): p. 47534-44.
93. Sun, X., T. Ju, and R.D. Cummings, *Differential expression of Cosmc, T-synthase and mucins in Tn-positive colorectal cancers*. *BMC Cancer*, 2018. **18**(1): p. 827.
94. Yoo, N.J., M.S. Kim, and S.H. Lee, *Absence of COSMC gene mutations in breast and colorectal carcinomas*. *APMIS*, 2008. **116**(2): p. 154-5.
95. Bard, F. and J. Chia, *Cracking the Glycome Encoder: Signaling, Trafficking, and Glycosylation*. *Trends Cell Biol*, 2016. **26**(5): p. 379-388.
96. Gill, D.J., et al., *Initiation of GalNAc-type O-glycosylation in the endoplasmic reticulum promotes cancer cell invasiveness*. *Proc Natl Acad Sci U S A*, 2013. **110**(34): p. E3152-61.
97. Nguyen, A.T., et al., *Organelle Specific O-Glycosylation Drives MMP14 Activation, Tumor Growth, and Metastasis*. *Cancer Cell*, 2017. **32**(5): p. 639-653 e6.
98. Egea, G., et al., *cis-Golgi resident proteins and O-glycans are abnormally compartmentalized in the RER of colon cancer cells*. *J Cell Sci*, 1993. **105 (Pt 3)**: p. 819-30.
99. Gibadullin, R., et al., *GalNAc-Tyrosine Is a Ligand of Plant Lectins, Antibodies, and Human and Murine Macrophage Galactose-Type Lectins*. *ACS Chem Biol*, 2017. **12**(8): p. 2172-2182.
100. Chik, J.H., et al., *Comprehensive glycomics comparison between colon cancer cell cultures and tumours: implications for biomarker studies*. *J Proteomics*, 2014. **108**: p. 146-62.
101. Devine, P.L., et al., *Expression of MUC1 and MUC2 mucins by human tumor cell lines*. *Tumour Biol*, 1992. **13**(5-6): p. 268-77.
102. Samaree Perez-Vargas, J.C., et al., *Role of cMET in the development and progression of colorectal cancer*. *Int J Mol Sci*, 2013. **14**(9): p. 18056-77.
103. Gout, S., et al., *Death receptor-3, a new E-Selectin counter-receptor that confers migration and survival advantages to colon carcinoma cells by triggering p38 and ERK MAPK activation*. *Cancer Res*, 2006. **66**(18): p. 9117-24.
104. Aychek, T., et al., *E-selectin regulates gene expression in metastatic colorectal carcinoma cells and enhances HMGB1 release*. *Int J Cancer*, 2008. **123**(8): p. 1741-50.
105. Carrascal, M.A., et al., *A functional glycoproteomics approach identifies CD13 as a novel E-selectin ligand in breast cancer*. *Biochim Biophys Acta Gen Subj*, 2018. **1862**(9): p. 2069-2080.
106. Carrascal, M.A., et al., *Staining of E-selectin ligands on paraffin-embedded sections of tumor tissue*. *BMC Cancer*, 2018. **18**(1): p. 495.
107. Tomlinson, J., et al., *Human colon cancer cells express multiple glycoprotein ligands for E-selectin*. *Int J Oncol*, 2000. **16**(2): p. 347-53.
108. Cervoni, G.E., et al., *O-glycan recognition and function in mice and human cancers*. *Biochem J*, 2020. **477**(8): p. 1541-1564.
109. Silva, M.L.S., *Lectin biosensors in cancer glycan biomarker detection*. *Adv Clin Chem*, 2019. **93**: p. 1-61.
110. Pirro, M., et al., *Characterization of Macrophage Galactose-type Lectin (MGL) ligands in colorectal cancer cell lines*. *Biochim Biophys Acta Gen Subj*, 2020. **1864**(4): p. 129513.
111. Paulo, J.A. and S.P. Gygi, *Nicotine-induced protein expression profiling reveals mutually altered proteins across four human cell lines*. *Proteomics*, 2017. **17**(1-2).
112. Parizadeh, S.M., et al., *The potential therapeutic and prognostic impacts of the c-MET/HGF signaling pathway in colorectal cancer*. *IUBMB Life*, 2019. **71**(7): p. 802-811.

113. Moriwaki, K., et al., *Deficiency of GMDS leads to escape from NK cell-mediated tumor surveillance through modulation of TRAIL signaling*. *Gastroenterology*, 2009. **137**(1): p. 188-98, 198 e1-2.
114. Saeland, E., et al., *Differential glycosylation of MUC1 and CEACAM5 between normal mucosa and tumour tissue of colon cancer patients*. *Int J Cancer*, 2012. **131**(1): p. 117-28.
115. Boyd, M., et al., *Genome-wide analysis of CDX2 binding in intestinal epithelial cells (Caco-2)*. *J Biol Chem*, 2010. **285**(33): p. 25115-25.
116. Lauc, G., et al., *Genomics meets glycomics-the first GWAS study of human N-Glycome identifies HNF1alpha as a master regulator of plasma protein fucosylation*. *PLoS Genet*, 2010. **6**(12): p. e1001256.
117. Pinto, R., et al., *CDX2 homeoprotein is involved in the regulation of ST6GalNAc-I gene in intestinal metaplasia*. *Lab Invest*, 2015. **95**(7): p. 718-27.
118. Holst, S., et al., *N-Glycomic and Transcriptomic Changes Associated with CDX1 mRNA Expression in Colorectal Cancer Cell Lines*. *Cells*, 2019. **8**(3).
119. Conze, T., et al., *MUC2 mucin is a major carrier of the cancer-associated sialyl-Tn antigen in intestinal metaplasia and gastric carcinomas*. *Glycobiology*, 2010. **20**(2): p. 199-206.
120. Tjalsma, H., *Identification of biomarkers for colorectal cancer through proteomics-based approaches*. *Expert Rev Proteomics*, 2010. **7**(6): p. 879-95.
121. de Wit, M., et al., *Colorectal cancer candidate biomarkers identified by tissue secretome proteome profiling*. *J Proteomics*, 2014. **99**: p. 26-39.
122. Makridakis, M. and A. Vlahou, *Secretome proteomics for discovery of cancer biomarkers*. *J Proteomics*, 2010. **73**(12): p. 2291-305.
123. Karagiannis, G.S., M.P. Pavlou, and E.P. Diamandis, *Cancer secretomics reveal pathophysiological pathways in cancer molecular oncology*. *Mol Oncol*, 2010. **4**(6): p. 496-510.
124. Pirro, M., et al., *N-Glycoproteins Have a Major Role in MGL Binding to Colorectal Cancer Cell Lines: Associations with Overall Proteome Diversity*. *Int J Mol Sci*, 2020. **21**(15).
125. Hou, S., et al., *Identification of the minimal N-glycosylation on integrin alpha5beta1 required for its inhibitory effect on EGFR signaling and cell proliferation*. *Biochem Biophys Res Commun*, 2020. **523**(1): p. 226-232.
126. Xue, H., et al., *Identification of serum biomarkers for colorectal cancer metastasis using a differential secretome approach*. *J Proteome Res*, 2010. **9**(1): p. 545-55.
127. Celis, J.E., et al., *Proteomic characterization of the interstitial fluid perfusing the breast tumor microenvironment: a novel resource for biomarker and therapeutic target discovery*. *Mol Cell Proteomics*, 2004. **3**(4): p. 327-44.
128. Yu, C.J., et al., *Comprehensive proteome analysis of malignant pleural effusion for lung cancer biomarker discovery by using multidimensional protein identification technology*. *J Proteome Res*, 2011. **10**(10): p. 4671-82.
129. Gronborg, M., et al., *Biomarker discovery from pancreatic cancer secretome using a differential proteomic approach*. *Mol Cell Proteomics*, 2006. **5**(1): p. 157-71.
130. Napoletano, C., et al., *Investigating Patterns of Immune Interaction in Ovarian Cancer: Probing the O-glycoproteome by the Macrophage Galactose-Like C-type Lectin (MGL)*. *Cancers (Basel)*, 2020. **12**(10).
131. Brandi, J., et al., *Proteomic approaches to decipher cancer cell secretome*. *Semin Cell Dev Biol*, 2018. **78**: p. 93-101.
132. Nickel, W. and C. Rabouille, *Mechanisms of regulated unconventional protein secretion*. *Nat Rev Mol Cell Biol*, 2009. **10**(2): p. 148-55.
133. Akiyama, N., et al., *Enhancing activity of N-glycosylation for constitutive proteins secretions in non-polarized cells*. *Biochem Biophys Res Commun*, 2009. **381**(4): p. 612-8.
134. Tuccillo, F.M., et al., *Aberrant glycosylation as biomarker for cancer: focus on CD43*. *Biomed Res Int*, 2014. **2014**: p. 742831.

135. Tamagnone, L. and G. Franzolin, *Targeting Semaphorin 4D in Cancer: A Look from Different Perspectives*. *Cancer Res*, 2019. **79**(20): p. 5146-5148.
136. Schlosser, A., et al., *Analysis of protein phosphorylation by a combination of elastase digestion and neutral loss tandem mass spectrometry*. *Anal Chem*, 2001. **73**(2): p. 170-6.
137. Trelle, M.B. and O.N. Jensen, *Utility of immonium ions for assignment of epsilon-N-acetylysine-containing peptides by tandem mass spectrometry*. *Anal Chem*, 2008. **80**(9): p. 3422-30.
138. Caval, T., A.J.R. Heck, and K.R. Reiding, *Meta-heterogeneity: evaluating and describing the diversity in glycosylation between sites on the same glycoprotein*. *Mol Cell Proteomics*, 2020.
139. Reiding, K.R., et al., *The benefits of hybrid fragmentation methods for glycoproteomics*. *Trac-Trends in Analytical Chemistry*, 2018. **108**: p. 260-268.
140. Campbell, M.P., *A Review of Software Applications and Databases for the Interpretation of Glycopeptide Data*. *Trends in Glycoscience and Glycotechnology*, 2017. **29**(168): p. E51-E62.
141. Lee, L.Y., et al., *Toward Automated N-Glycopeptide Identification in Glycoproteomics*. *J Proteome Res*, 2016. **15**(10): p. 3904-3915.
142. Lu, L., et al., *O-Pair Search with MetaMorpheus for O-glycopeptide characterization*. *Nat Methods*, 2020. **17**(11): p. 1133-1138.
143. Steentoft, C., et al., *Precision mapping of the human O-GalNAc glycoproteome through SimpleCell technology*. *EMBO J*, 2013. **32**(10): p. 1478-88.
144. Ruhaak, L.R., et al., *Mass Spectrometry Approaches to Glycomic and Glycoproteomic Analyses*. *Chem Rev*, 2018. **118**(17): p. 7886-7930.
145. Shen, B., et al., *A novel strategy for global mapping of O-GlcNAc proteins and peptides using selective enzymatic deglycosylation, HILIC enrichment and mass spectrometry identification*. *Talanta*, 2017. **169**: p. 195-202.
146. Zachara, N., Y. Akimoto, and G.W. Hart, *The O-GlcNAc Modification*, in *Essentials of Glycobiology*, rd, et al., Editors. 2015: Cold Spring Harbor (NY). p. 239-251.
147. Halim, A., et al., *Assignment of saccharide identities through analysis of oxonium ion fragmentation profiles in LC-MS/MS of glycopeptides*. *J Proteome Res*, 2014. **13**(12): p. 6024-32.
148. Park, G.W., et al., *Classification of Mucin-Type O-Glycopeptides Using Higher-Energy Collisional Dissociation in Mass Spectrometry*. *Anal Chem*, 2020. **92**(14): p. 9772-9781.
149. Riley, N.M., et al., *Optimal Dissociation Methods Differ for N- and O-Glycopeptides*. *J Proteome Res*, 2020. **19**(8): p. 3286-3301.
150. Toghi Eshghi, S., et al., *Classification of Tandem Mass Spectra for Identification of N- and O-linked Glycopeptides*. *Sci Rep*, 2016. **6**: p. 37189.
151. Kall, L., et al., *Semi-supervised learning for peptide identification from shotgun proteomics datasets*. *Nat Methods*, 2007. **4**(11): p. 923-5.
152. Clarke, C., P. Rudland, and R. Barraclough, *The metastasis-inducing protein AGR2 is O-glycosylated upon secretion from mammary epithelial cells*. *Mol Cell Biochem*, 2015. **408**(1-2): p. 245-52.
153. Fessart, D., et al., *Secretion of protein disulphide isomerase AGR2 confers tumorigenic properties*. *Elife*, 2016. **5**.
154. Ros, M., et al., *ER-resident oxidoreductases are glycosylated and trafficked to the cell surface to promote matrix degradation by tumour cells*. *Nat Cell Biol*, 2020. **22**(11): p. 1371-1381.
155. van Klinken, B.J., et al., *The human intestinal cell lines Caco-2 and LS174T as models to study cell-type specific mucin expression*. *Glycoconj J*, 1996. **13**(5): p. 757-68.
156. Schroeder, B.W., et al., *AGR2 is induced in asthma and promotes allergen-induced mucin overproduction*. *Am J Respir Cell Mol Biol*, 2012. **47**(2): p. 178-85.
157. Macher, B.A. and T.Y. Yen, *Proteins at membrane surfaces-a review of approaches*. *Mol Biosyst*, 2007. **3**(10): p. 705-13.

158. Vit, O. and J. Petrak, *Integral membrane proteins in proteomics. How to break open the black box?* J Proteomics, 2017. **153**: p. 8-20.
159. Laughlin, S.T., et al., *Metabolic labeling of glycans with azido sugars for visualization and glycoproteomics.* Methods Enzymol, 2006. **415**: p. 230-50.
160. Torres-Gutierrez, E., et al., *Identification of O-GlcNacetylated Proteins in Trypanosoma cruzi.* Front Endocrinol (Lausanne), 2019. **10**: p. 199.
161. Ashkani, J. and K.J. Naidoo, *Glycosyltransferase Gene Expression Profiles Classify Cancer Types and Propose Prognostic Subtypes.* Sci Rep, 2016. **6**: p. 26451.
162. Duarte, H.O., et al., *Gastric Cancer Cell Glycosylation as a Modulator of the ErbB2 Oncogenic Receptor.* Int J Mol Sci, 2017. **18**(11).
163. Dall'Olio, F., et al., *Mechanisms of cancer-associated glycosylation changes.* Front Biosci (Landmark Ed), 2012. **17**: p. 670-99.
164. Ferreira, I.G., et al., *Glycosylation as a Main Regulator of Growth and Death Factor Receptors Signaling.* Int J Mol Sci, 2018. **19**(2).
165. Chen, R., et al., *c-Met function requires N-linked glycosylation modification of pro-Met.* J Cell Biochem, 2013. **114**(4): p. 816-22.
166. Qian, J., et al., *alpha2,6-hyposialylation of c-Met abolishes cell motility of ST6Gal-I-knockdown HCT116 cells.* Acta Pharmacol Sin, 2009. **30**(7): p. 1039-45.
167. Wu, Y.M., et al., *C1GALT1 enhances proliferation of hepatocellular carcinoma cells via modulating MET glycosylation and dimerization.* Cancer Res, 2013. **73**(17): p. 5580-90.
168. Mereiter, S., et al., *Glycomic Approaches for the Discovery of Targets in Gastrointestinal Cancer.* Front Oncol, 2016. **6**: p. 55.
169. Zaal, A., et al., *Activation of the C-Type Lectin MGL by Terminal GalNAc Ligands Reduces the Glycolytic Activity of Human Dendritic Cells.* Front Immunol, 2020. **11**: p. 305.
170. Gabba, A., et al., *Crystal Structure of the Carbohydrate Recognition Domain of the Human Macrophage Galactose C-Type Lectin Bound to GalNAc and the Tumor-Associated Tn Antigen.* Biochemistry, 2021.
171. Yin, S., et al., *Functional genomics analysis of human colon organoids identifies key transcription factors.* Physiol Genomics, 2020. **52**(6): p. 234-244.

Abbreviations

AGC	Automatic gain control	Fc	Fragment crystallizable
AGR2	Anterior gradient protein 2 homolog	FDR	False discovery rate
Akt	Protein kinase B	FGF2	Fibroblast growth factor 2
APC	Adenomatous polyposis coli protein	FITC	Fluorescein isothiocyanate
APC	Antigen Presenting Cells	FOBT	Fecal occult blood test
Arg	Arginine	Fuc	Fucose
BCA	Bicinchoninic acid	Gal	Galactose
BRAF	Serine/threonine-protein kinase B-raf	GalNAc	N-Acetylgalactosamine
CA	Carbohydrate antigen	GALNT	N-Acetylglucosaminyltransferase
CD3	T-cell surface glycoprotein CD3	GBPs	Glycan-binding proteins
CD43	Leukosialin	GCNT	N-acetylglucosamine transferase
CD45	Receptor-type tyrosine-protein phosphatase C (PTPRC)	GDP	Guanosine diphosphate
CDX	Caudal-related homeobox protein	Glc	Glucose
CEA	Carcinoembryonic antigen	GlcA	Glucuronic acid
CID	collision-induced dissociation	GlcNAc	N-acetylglucosamine
CLR	C-type lectin receptor	GLG1	Golgi apparatus protein 1
CM	Conditioned medium	GO	Gene Ontology
c-MET	Hepatocyte growth factor receptor	GOLM	Golgi membrane protein 1
Cosmc	Core 1 beta-3-galactosyltransferase-specific molecular chaperone	h	hour(s)
CRC	Colorectal cancer	HCD	higher-energy collisional dissociation
CRD	Carbohydrate recognition domain	HCF	Host cell factor
Cys	Cysteine	Hex	Hexose
DAG1	Dystroglycan	HexNAc	N-acetylhexosamine
DC	Dendritic cell	HGF	Hepatocyte growth factor
DC-SIGN	Dendritic cell-specific intercellular adhesion molecule-3-grabbing non-integrin	HILIC	Hydrophilic interaction liquid chromatography
DMEM	Dulbecco's Modified Eagle	His	Histidine
DNA	Deoxyribonucleic acid	HLA	Human Leukocyte Antigen
DTT	Ddithiothreitol	HNF	Hepatocyte nuclear factor
ECL	Enhanced chemiluminescence	HPLC	High-performance liquid chromatography
ECM	Extracellular matrix	HRP	Horseradish peroxidase
EDTA	Ethylenediaminetetraacetic acid	IdoA	Iduronic acid
EGFR	Epithelial growth factor receptor	IFN	Interferon
EGTA	Egtazic acid	IgG	Immunoglobulin G
ER	Endoplasmic reticulum	IL	Interleukin
ETD	electron-transfer dissociation	ITG	Integrin
EThdD	Electron-transfer/higher-energy collision dissociation	JAK	Janus kinase
FA	Formic acid	KIAA031	Dyslexia-associated protein
FACS	Fluorescence-activated cell sorting	9L	KIAA0319-like protein
FBS	Foetal bovine serum	KRAS	GTPase KRas
		LacdiNA	N,N-diacetyllactosamine
		c	
		LC	Liquid chromatography

Appendices

Lck	Tyrosine-protein kinase Lck	RPMI	Roswell Park Memorial Institute
LeA	Lewis A	RT	Room temperature
LeB	Lewis B	SDS-	Sodium dodecyl sulphate-
Leu	Leucine	PAGE	polyacrylamide gel electrophoresis
LeX	Lewis X	SELPLG	P-selectin glycoprotein ligand 1
LeY	Lewis Y	SEMA	Semaphorin
LLO	lipid linked oligosaccharide	Ser	Serine
LRCC	Leucine-rich repeat and coiled-coil domain-containing protein	Sia	Sialic Acid
Lys	Lysine	SILAC	Stable Isotope Labeling by Amino acids in Cell culture
M.W.	Molecular Weight	sLeA	Sialyl Lewis A
m/z	Mass-to-charge ratio	sLeX	Sialyl Lewis X
mAb	Monoclonal antibody	SORL1	Sortilin-related receptor
Man	Mannose	SPE	Solid-Phase Extraction
MAPK	Mitogen-activated protein kinase	STAT	Signal transducer and activator of transcription
Met	Methionine	sTn	Sialyl Thomsen-nouvelle antigen
MGAT5	Alpha-1,6-mannosylglycoprotein 6-beta-N-acetylglucosaminyltransferase	antigen	
MGL/CL	Macrophage galactose-type C-type lectin	STR	Short-tandem repeat
EC10/CD		T	Thomsen-Friedenreich antigen
301		T/Thr	Threonine
MHC	major histocompatibility complex	TACA	Tumor-Associated Carbohydrate Antigens
MS	Mass Spectrometry	TCEP	tris(2-carboxyethyl)phosphine
MS/MS	tandem mass spectrometry	TCL	Total cell lysate
MSI	Microsatellite instability	TCR	T-cell receptor
MSS	Microsatellite stable	TFA	Trifluoroacetic acid
MUC	Mucin	TFR1	Transferrin receptor protein 1
N/Asn	Asparagine	TIMP1	Metalloproteinase inhibitor 1
NCE	Normalized collision energy	TLR	Toll like receptor
NeuAc	N-acetylneuraminic acid	TMT	Tumor-Associated Carbohydrate Antigens Tandem Mass Tag
O/N	Over-night	Tn	Thomsen-nouvelle antigen
PBS	Phosphate Buffered Saline	TNF	Tumor necrosis factor
Phe	Phenilalanine	TP53	Cellular tumor antigen p53
PI3CA	PI3 kinase	TREML2	Trem-like transcript 2 protein
PI3K	Phosphatidylinositol 3-kinase	Trp	Thriptophan
PLA	Proximity ligation assay	Tyr	Tyrosine
PNGase	Peptide N-Glycosidase F	UDP	Uridine diphosphate
F		UPLC	Ultra Performance Liquid Chromatography
Pro	Proline	WB	Western Blot
PTK7	Inactive tyrosine-protein kinase 7	X	any amino acid
PTPR	Receptor-type tyrosine-protein phosphatase	Xyl	Xylose
PVDF	Polyvinylidene difluoride		
RNA	Ribonucleic acid		