



Universiteit
Leiden
The Netherlands

Optimizing the sequence of metastatic castration-resistant prostate cancer treatment options

Badrising, S.K.

Citation

Badrising, S. K. (2021, June 15). *Optimizing the sequence of metastatic castration-resistant prostate cancer treatment options*. Retrieved from <https://hdl.handle.net/1887/3188563>

Version: Publisher's Version

License: [Licence agreement concerning inclusion of doctoral thesis in the Institutional Repository of the University of Leiden](#)

Downloaded from: <https://hdl.handle.net/1887/3188563>

Note: To cite this publication please use the final published version (if applicable).

Cover Page



Universiteit Leiden



The handle <https://hdl.handle.net/1887/3188563> holds various files of this Leiden University dissertation.

Author: Badrising, S.K.

Title: Optimizing the sequence of metastatic castration-resistant prostate cancer treatment options

Issue Date: 2021-06-15

Chapter 5

A Prospective Observational Registry Evaluating Clinical Outcomes of Radium-223 Treatment in a Non-study Population

Sushil K Badrising[#], Rebecca D Louhanepessy[#], Vincent vd Noort, Jules LLM Coenen, Paul Hamberg, Aart Beeker, Nils Wagenaar, Marnix Lam, Filiz Celik, Olaf J.L Loosveld, Ad Oostdijk, Hanneke Zuetenhorst, John B Haanen, Erik Vegt, Wilbert Zwart, Andries M Bergman, on behalf of the ROTOR investigators and the Dutch Uro-Oncology Study group (DUOS15101).

[#]These authors contributed equally

International journal of cancer. 2020 Aug; 147(4), 1143-1151

ABSTRACT

Introduction

The ALSYMPCA study established a 3.6 month Overall Survival (OS) benefit in metastatic Castration Resistant Prostate Cancer (mCRPC) patients treated with Radium-223 dichloride (Ra-223) over placebo. Here we report clinical outcomes of Ra-223 treatment in a non-study population.

Methods

In this prospective registry, patients from 20 Dutch hospitals were included prior to Ra-223 treatment. Clinical parameters collected included previous treatments and Adverse Events. Primary outcome was 6 months Symptomatic Skeletal Event (SSE) free survival, while secondary outcomes included Progression-Free Survival (PFS) and Overall Survival (OS).

Results

Of the 305 patients included, 300 were evaluable. The mean age was 73.6 years, 90% had ≥ 6 bone metastases and 74.1% were pretreated with Docetaxel, 19.5% with Cabazitaxel and 80.5% with Abiraterone and/or Enzalutamide. Of all patients, 96.7% were treated with Ra-223 and received a median of 5 cycles. After a median follow-up of 13.2 months, 6 months SSE-free survival rate was 83%, median PFS was 5.1 months and median OS was 15.2 months. 6 months SSE-free survival rate and OS were comparable with those reported in ALSYMPCA. 'Previous Cabazitaxel treatment' and 'bone-only metastases' were independent predictors of a shorter and longer PFS, respectively, while above median LDH and 'bone-only metastases' were independent predictors of shorter and longer OS, respectively. Toxicity was similar as reported in the ALSYMPCA trial.

Conclusion

These results suggest that in a non-study population, Ra-223 treatment is well-tolerated, equally effective as in the ALSYMPCA population and that patients not previously treated with Cabazitaxel benefit most from Ra-223.

INTRODUCTION

Prostate cancer is the second most common cancer in men worldwide, with over 1 million newly diagnosed cases each year.¹ At presentation, approximately 11% of patients have bone metastases², while approximately 70% of metastatic prostate cancer patients develop bone metastases during the course of their disease.³ Bone metastases have a detrimental impact on quality of life.⁴ These metastases are the most common cause of cancer-related pain, pathological fractures, compression of the spinal cord, vertebral instability and hypercalcemia.⁵

Until 2013, bone directed treatment of symptomatic metastases was limited to beta-emitting radionuclides, external beam-radiation therapy (EBRT), bisphosphonates, denosumab and surgery.⁶ Although these therapies are effective for pain palliation and prevention, no Overall Survival (OS) benefit was established.^{7, 8} This changed with the introduction of Radium-223 dichloride (*Xofigo*®; Ra-223), a targeted alpha therapy that selectively binds to areas of increased bone turnover. In 2013, the ALSYMPCA phase III trial reported a survival benefit of 3.6 months in metastatic Castration-Resistant Prostate Cancer (mCRPC) patients treated with Ra-223 compared to placebo, rendering Ra-223 the only radionuclide treatment with a survival benefit.⁶

Over recent years, the treatment options for mCRPC patients have expanded.⁹ Although, patients previously treated with Docetaxel (Doc) as well as patients not-treated with Doc were included in ALSYMPCA, none of these patients had been treated with the newer life-prolonging agents Abiraterone (Abi), Enzalutamide (Enz) and Cabazitaxel (Cab). These newer generation drugs became available after accrual of the ALSYMPCA trial was completed.^{10–13} This raises the question whether the results of ALSYMPCA are representative for present patients treated with Ra-223. Therefore, we conducted a prospective registry of Ra-223 treated mCRPC patients in the Netherlands. The primary goal of this registry was to assess the 6 months symptomatic skeletal event (SSE) free survival rate in a non-study population, while OS, progression-free survival (PFS), and safety were secondary outcomes.

PATIENTS AND METHODS

Study design and patients

In this non-interventional, multicenter, prospective, observational registry, patients aged 18 years or older with progressive mCRPC and scheduled for Ra-223 treatment were included in 20 hospitals in the Netherlands. This registry was approved by local medical ethics committees. Obtaining signed Informed Consent was not required, but patients had to provide oral consent and written approval for the documentation and use of their identifiers. Patients received Ra-223

at the treating physician's discretion. There were no other in- and exclusion criteria or stopping rules. During Ra-223 treatment, patients were evaluated at the outpatient clinic every 4 weeks during treatment, where ECOG performance, adverse events (AE) and clinical lab assessments were documented. Radiological evaluation during and after Ra-223 treatment and frequency of follow-up visits was at the physician's discretion. All patients scheduled to be treated with Ra-223 were included in our analysis. Clinical data was collected from the medical records after completion of Ra-223 treatment.

Procedures and data

Using an electronic case-report form, we recorded multiple baseline characteristics, efficacy assessments, AE (graded according to Common Terminology Criteria for Adverse Events v. 4.0¹⁴) and SSE during Ra-223 treatment (defined as the time from inclusion to first need for EBRT to relieve skeletal symptoms, new pathological fractures, spinal cord compression, or tumor-related orthopedic surgical intervention). Patients were considered symptomatic when they used analgesics regularly or were treated with EBRT for cancer-related bone pain in the previous 12 weeks, which is the same definition as used in ALSYMPCA.¹⁵

Progression Free Survival (PFS) was calculated from the date of first Ra-223 treatment to the date of confirmed progression. Patients were considered progressive in case of clinical progression (defined as clinical signs of progression), radiological progression (according to RECIST v. 1.1)¹⁶, started with subsequent treatment or death, all in line with PCWG3 recommendations.¹⁷ OS was calculated from the date of the first Ra-223 cycle to the date of death or censored at last follow-up. PSA and Alkaline Phosphatase (ALP) declines from baseline during Ra-223 treatment of $\geq 30\%$, $\geq 50\%$, and $\geq 90\%$ were evaluated as best response. Time to ALP progression was defined as an increase of $\geq 25\%$ from baseline at ≥ 12 weeks, in patients with no decrease from baseline, or as an increase of $\geq 25\%$ above the nadir in patients with an initial decrease from baseline. Time to subsequent treatment was defined as time from last cycle of Ra-223 until start of any systemic life-prolonging anti-prostate cancer treatment. The treating physician provided reasons for discontinuation of Ra-223.

Sample size and statistical analysis

The dual endpoints of the study are 6 months SSE-free survival and reduction of pain as measured by the Brief Pain Inventory (BPI). ALSYMPCA reported an SSE-free survival rate at 6 months of 78%. We calculated that if the SSE-free 6 months survival rate in our population is similar to that in the ALSYMPCA population, with 300 patients we can estimate it with a .95-confidence interval of 5 percentage points above and below. In particular we expect to have over 95% power to show that the 6 months SSE-free survival rate on Ra-223 lies statistically significantly above 70%. In parallel to these considerations we looked at the power to detect a decrease in pain score when comparing patient reported outcomes (PRO) while on radium treatment with baseline. Of

each of the 300 patients we expected an average of 4.5 measurements, bringing the expected number of measurements to 1350. However, for the sake of the power calculation we restricted ourselves to a very basic comparison of only two measurements per patients: pain after six months and pain at baseline. For this comparison, simulations show that under a wide range of assumptions concerning the initial distribution of pain scores over the patients, with 300 patients we have more than 95% power to detect (in a paired t-test) an average decrease in pain as small as one point on BPI pain scale. The pain response on Ra-223 therapy will be presented in a separate publication, along with other PROs.

In line with PCWG3 recommendations¹⁷, survival and progression were evaluated using Kaplan-Meier (KM) estimates. The log-rank test was used in univariate survival analysis to identify variables that could predict OS and PFS. Factors with P values ≤ 0.10 were included in a multivariate model for survival rate by Cox proportional-hazard analysis. Statistical analyses were conducted using Statistical Analysis System (SAS) statistical software (SAS Institute Inc., Chicago, Ill., USA) and R (R Foundation for Statistical Computing, Vienna, Austria)¹⁸.

RESULTS

Patient Characteristics

Between February 2015 and March 2018, 305 patients from 20 Dutch hospitals were enrolled in the ROTOR. The median follow-up was 13.2 months (95% confidence interval [CI] 12.1-14.4 months). Five patients were excluded because written approval to use identifiers was not obtained or not properly stored according to guidelines. Therefore, 300 patients were evaluable (Figure 1). Out of these 300 patients, 10 had no baseline data available and from 10 no AE data were collected. Baseline patient characteristics are summarized in Table 1. Practically all patients had an ECOG performance score of 0-1, all patients had two or more bone metastases and 19.6% of the patients were asymptomatic prior to RA-223 treatment.

Previous, concomitant and RA-223 treatment

For 11.3% of the patients, Ra-223 was the first treatment line, 34.7% received 1 line of systemic treatment prior to Ra-223, while 54% of the patients received 2 or more lines prior to Ra-223 (Table 1). Of the patients treated with life-prolonging therapy prior to Ra-223, 80.5% were treated with Abi and/or Enz, 74.1% were treated with Doc and 19.5 % were treated with Cab. All patients treated with Cab had previously been treated with Doc. EBRT within 12 weeks prior to Ra-223 was received by 8.7% of patients. Forty-one percent of the patients were treated with bisphosphates or denosumab. Of the 300 evaluable patients, 290 received at least one cycle of Ra-223, while the median number of cycles was 5 and 54.7% of patients received at least 5 Ra-223 cycles (Table 2). Reported reasons for Ra-223 treatment discontinuation included, six cycles

completed (46.3%), symptomatic progression (35%), no PSA response (20.7%) and radiological progression (16%)(Table 2).

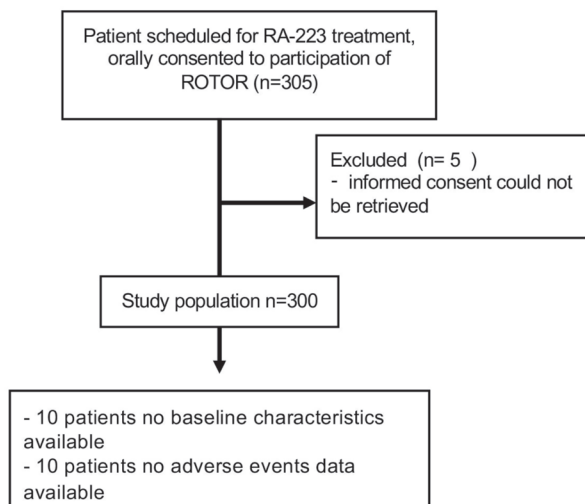


Figure 1. Consort diagram

Table 1. Patient and Treatment Characteristics

Patient Demographics	Median [IQR], Number of Patients (%) or value
Age, years	73.6 [46.3-91.5]
ECOG performance status	(n=279)
0-1	264 (94.6)
2	15 (5.3)
≥3	0
Symptomatic patients	131(80.4)
Asymptomatic patients	32 (19.6)
Gleason	(n=251)
≤7	87 (34.9)
8	67 (26.9)
≥9	95 (38.2)
Metastatic sites	(n=290)
Bone	287 (99.0)
Lymph nodes	84 (29.0)
Visceral organs	0 (0)

No. of bone metastases	(n=272)
0-1	0
2-6	21 (7.7)
>6	246 (90.4)
Super scan	5 (1.8)
Laboratory values	
PSA, mg/L	72.3 [25.0-175.0]
Hemoglobin, g/dL	12.6 [11.3-13.4]
ALP, U/L	138 [85-248]
ALP ³² 220 U/L	81 (27.9)
LDH, U/L	225.0 [192-296]
Albumin, g/L	42 [38-44]
Calcium, mmol/ml	2.35 [2.26-2.43]
Testosterone, nmol/l	0.5 [0.45-0.50]
Previous lines of systemic life prolonging treatments	(n=300)
0	34 (11.3)
1	104 (34.7)
2	96 (32.0)
3	50 (16.7)
4	13 (4.3)
5	3 (1.0)
Specific previous treatments	(n=266)
Abiraterone and or Enzalutamide	214 (80.5)
Docetaxel	197 (74.1)
Cabazitaxel	52 (19.5)
Radiotherapy 12 weeks prior to treatment	26 (8.7)
Concomitant medication	(n=294)
Bisphosphonates	49 (16.7)
Denosumab	63 (24.4)

Abbreviations: n:patients evaluable; ECOG: Eastern Cooperative Oncology Group; ALP: serum Alkaline Phosphatase; LDH: Lactate dehydrogenase; PSA: serum Prostate Specific Antigen;

Clinical outcomes

The primary outcome of this study, 6 months SSE free survival was 83%, which is 5% higher than the 78% reported in ALSYMPCA (Figure 2a). During Ra-223 treatment, 58 patients (19.3%) experienced an SSE (Table 2); 2.3% of these SSE were pathological fractures, 5.7% spinal cord compressions, 11% EBRTs and 0.3% tumor-related orthopedic surgical intervention. After a median follow-up of 13.2 months (95%CI 12.1-14.4), PFS was 5.1 months (Figure 2b) and OS was 15.2 months (Figure 2c; Table 2). PSA and ALP declines of $\geq 50\%$ were observed in 4.3% and 22.0% of patients, respectively (Table 2). Patients with a PSA decline $> 30\%$ had median PFS

and OS of 10.4 and 21.0 months, respectively. Patients with ALP declines $>30\%$ had median PFS and OS of 6.2 and 19.1 months, respectively (Table 2). Both PSA and ALP responses were related with longer than median PFS and OS, while ALP responses were more frequent. Time to ALP progression was 6.3 months (95%CI 6.0-6.6) (Table 2). Although asymptomatic patients were infrequent, these patients had better PFS compared to symptomatic patients, 5.9 and 4.3 months, respectively (Table 2). Symptomatic patients had an OS of 13, 4 months, while there were not enough events to calculate OS in asymptomatic patients. (Supplementary figure 1a; Table 2). PFS in patients previously treated with Cab was 4.2 month, while Cab naïve patients had a PFS of 5.2 months (Table 2; Supplementary figure 2d). During Ra-223 treatment 28.1% of the patients were hospitalized and median time from first Ra-223 treatment until start of subsequent treatment was 5.9 months (95%CI 4.1-7.7) (Table 2).

Table 2. Outcomes of Radium-223 treatment

Outcome variables	Median [IQR], No. of Patients (%) or 95% CI
No. of Radium-223 cycles	
Median number of cycles	5.0 [3-6]
0	10 (3.3)
1-2	40 (13.3)
3-4	86 (28.7)
5-6	161 (53.7)
>6	3 (1.0)
ALP decline	
	($n=255$)
$\geq 30\%$	122 (47.8)
$\geq 50\%$	56 (22.0)
$\geq 90\%$	1 (0.4)
Time to ALP progression, Months	
	6.3 (6.0-6.6)
PSA decline	
	($n=256$)
$\geq 30\%$	16 (6.3)
$\geq 50\%$	11 (4.3)
$\geq 90\%$	3 (1.2)
Reason for Radium-223 discontinuation	
Six cycles completed	139 (46.3)
Symptomatic progression	105 (35.0)
No PSA response	62 (20.7)
Radiological progression	48 (16.0)
Intolerance	44 (14.7)
Death	8 (2.7)
Other/Reason unknown	9 (3.0)

Symptomatic skeletal event during Radium-223 treatment

Total SSE	58 (19.3)
Pathological fractures	7 (2.3)
Radiotherapy	33 (11.0)
Spinal cord compression	17 (5.7)
Bone surgery	1 (0.3)

Time to first SSE, Months	<i>Median not reached</i>
----------------------------------	---------------------------

Progression free survival (Months)

Whole population	5.1 (4.5-5.8)
Patients >30% PSA decline	10.4 (6.6-14.2)
Patients >30% ALP decline	6.2 (5.1-7.3)
Patients with bone-only metastases	5.5 (4.9-6.0)
Symptomatic patients	4.3 (3.3-5.3)
Asymptomatic patients	5.9 (4.9-6.9)
Patients not treated with Cabazitaxel	5.2 (4.5-5.9)
Patients treated with Cabazitaxel	4.2 (3.5-4.8)

Overall Survival (Months)

Whole population	15.2 (12.8-17.6)
Patients >30% PSA decline	21.0 [14.7-27.2]
Patients >30% ALP decline	19.1 (13.5-24.6)
Symptomatic patients	13.4 (9.5-17.3)
Asymptomatic patients	<i>Median not reached</i>

Time to subsequent treatment, Months	5.9 (4.1-7.7)
---	---------------

Hospital admission during Radium-223 treatment	82 (28.1)
---	-----------

Abbreviations: ALP: serum Alkaline Phosphatase; PSA: serum Prostate Specific Antigen; SSE: Symptomatic Skeletal Event

Univariate and multivariate analysis affecting PFS and OS

Univariate and multivariate analysis of factors associated with PFS and OS are summarized in Table 3. According to univariate analysis, previous Doc, previous Cab, elevated ALP, elevated LDH and higher Gleason score, were associated with shorter PFS, while higher serum calcium levels, higher hemoglobin, bone-only metastases, >30% ALP decline and >30% PSA decline and number of Ra-223 cycles were associated with longer PFS. However, multivariate analysis only confirmed previous use of Cab and bone-only metastases as independent predictors of a shorter and longer PFS, respectively.

Univariate analysis suggested an association between shorter OS and line of treatment, previous Cab, elevated ALP and elevated LDH, while higher serum calcium, bone-only metastases, >30% ALP decline, number of Ra-223 cycles and >30% PSA decline were associated with a longer

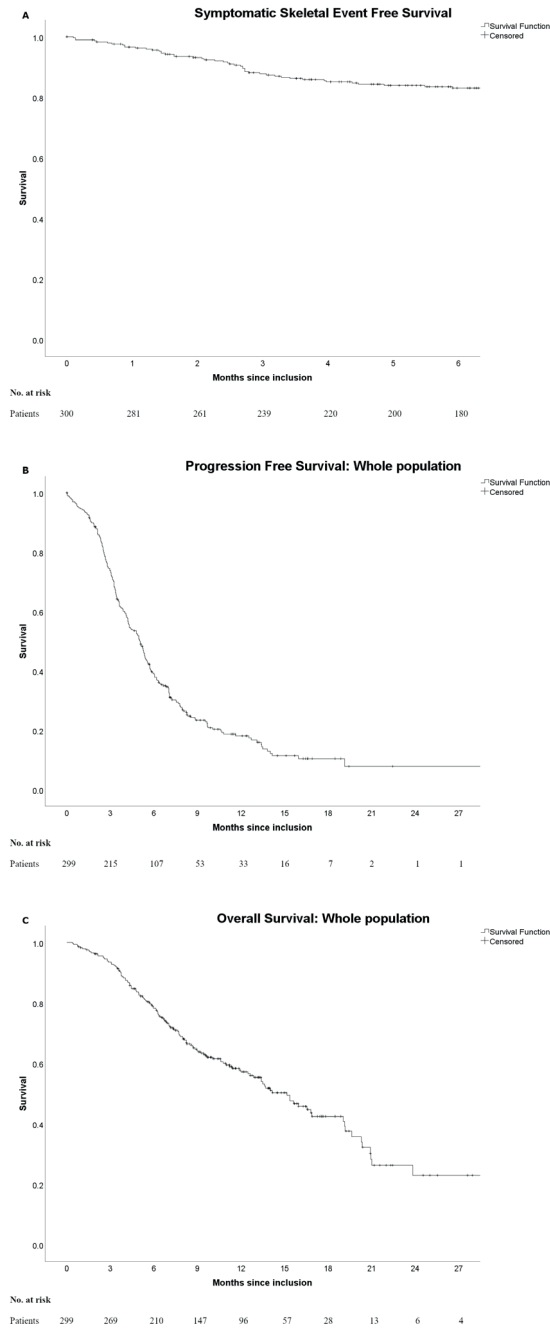


Figure 2.
A: Kaplan-Meier curves of Symptomatic Skeletal Event Free Survival. **B:** Kaplan-Meier curves of Progression Free Survival of the whole population. **C:** Kaplan-Meier curves of Overall Survival of the whole population

OS. Only elevated LDH and bone-only metastases were independent predictors in a multivariate Cox model of shorter and longer OS, respectively.

Tolerability

Adverse event (AE) were collected from 290 patients (Supplementary table 1). Grade 3 anemia was observed in 18.6% of the patients, but no grade 4. Grade 3 thrombocytopenia was observed in 3.1% of the patients and grade 4 in 1%. Grade 3 neutropenia was observed in 2.4% and grade 4 in 0.3%. The most common reported non-hematologic AE was fatigue (61.4%). The majority of these patients had grade 1-2 fatigue (55.5%). Other common non-hematologic AEs (all grades) were nausea (31%) and diarrhea (28.6%).

DISCUSSION

When ALSYMPCA was conducted, no life-prolonging treatments apart from Doc were available. Patients not fit for, or refusing chemotherapy had no other treatment options than participation in the ALSYMPCA trial, while nowadays these patients are treated with less toxic second-generation androgen receptor-antagonists.^{19, 20} As a result, only 11% of patients received Ra-223 as a first-line treatment in the present cohort, while 80.5% of patients were treated with Abi or Enz prior to Ra-223. Moreover, 54% of patients received two or more lines of treatment prior to Ra-223 treatment. This suggests that with the introduction of new life-prolonging treatment options, Ra-223 is now used in more pre-treated patients than in ALSYMPCA.

Although patients in the registry were predominantly treated with Ra-223 in second and later lines, and patients in the ALYMPCA population were treated in first or second line, OS in the registry is comparable to OS in the treatment arm of ALSYMPCA (15.2 months and 14.9, respectively).⁶ The comparable OS might be attributed to strict patient selection for Ra-223 treatment in real-life, but also to effective subsequent treatments. Better patient selection is reflected by a lower frequency of ECOG ≥ 2 scores (5% and 13%, respectively), lower baseline PSA levels (PSA 72.3mg/L and 146 mg/L, respectively) and lower baseline ALP levels (ALP 128 U/L and 211 U/L, respectively) in the non-study cohort when compared to the ALSYMPCA population. Univariate regression analysis in our cohort suggests that higher PSA and higher ALP are associated with shorter OS, confirming reports from previous studies.^{21, 22}

The rate of $\geq 30\%$ ALP declines in our cohort was similar to what was reported in ALSYMPCA (47.8% and 46.8%, respectively). In the present cohort, a $>30\%$ decrease of ALP from baseline was associated with a longer median PFS and OS when compared to the entire cohort. This favorable outcome was also reflected in univariate analysis of PFS and OS. This is in agreement with the results of a post-hoc analysis of ALSYMPCA, where a significant decline in risk of death

Table 3. Univariate and multivariate analysis of factors affecting Progression Free Survival (PFS) and Overall Survival (OS)

Variable	PFS					OS				
	Univariate			Multivariate		Univariate			Multivariate	
	HR	95% CI	P	HR	95% CI	HR	95% CI	P	HR	95% CI
Age + 1y	0.98	0.97-1.0	0.010	1.01	0.98-1.04	0.628	1.00	0.98-1.02	0.750	
ECOG + 1	1.10	0.84-1.42	0.47				1.31	0.94-1.85	0.114	
Calcium	0.41	0.14-1.18	0.098	1.50	0.25-9.14	0.658	0.36	0.14-0.89	0.027	0.61 0.06-6.51 0.680
Log ALP	1.29	1.15-1.46	<0.001	1.22	0.96-1.55	0.106	1.51	1.31-1.73	<0.001	1.25 0.94-1.65 0.124
>30% ALP decline	0.58	0.45-0.75	<0.001				0.68	0.48-0.97	0.028	
Log PSA	1.05	0.99-1.12	0.081	0.98	0.89-1.08	0.663	1.19	1.09-1.29	<0.001	1.07 0.94-1.22 0.301
>30% PSA decline	0.36	0.21-0.61	<0.001				0.39	0.18-0.83	0.005	
Log LDH	1.84	1.50-2.26	<0.001	1.28	0.82-1.00	0.284	3.09	2.43-3.93	<0.001	2.99 1.85-4.84 <0.001
Hb + 1	0.89	0.82-0.96	0.004	0.98	0.84-1.14	0.779	0.76	0.69-0.85	<0.001	0.94 0.77-1.15 0.534
Gleason + 1	1.27	1.12-1.44	<0.001	1.05	0.87-1.26	0.62	1.16	0.99-1.36	0.071	0.92 0.75-1.14 0.451
No of metastases	1.01	1.00-1.01	0.03	1.02	1.01-1.03	0.003	1.18	0.91-1.51	0.211	
Only bone metastases	0.57	0.43-0.75	<0.001	0.31	0.19-0.49	<0.001	0.49	0.35-0.69	<0.001	0.21 0.13-0.46 <0.001
Line nr	1.04	0.91-1.19	0.59				1.22	1.03-1.45	0.023	1.38 0.89-2.13 0.148
Abi and/or Enz	0.78	0.56-1.08	0.128				1.26	0.80-1.98	0.314	
Docetaxel	1.41	1.03-1.94	0.031	1.33	0.81-2.22	0.248	1.40	0.92-2.13	0.113	
Cabazitaxel	1.44	1.04-1.99	0.026	1.89	1.01-3.51	0.046	2.31	1.58-3.38	<0.001	1.46 0.64-3.34 0.371
Denosumab	0.99	0.67-1.27	0.605				0.69	0.44-1.08	0.105	
Bisphosphonates	0.95	0.68-1.34	0.767				1.15	0.76-1.76	0.505	
Symptomatic	1.29	0.72-2.34	0.394				1.15	0.74-1.80	0.535	
No of Ra223 cycles	0.63	0.58-0.69	<0.001				0.60	0.56-0.64	<0.001	

All values are at baseline. Age+1y:HR per year age difference; ECOG +1: HR per every ECOG-point increase; Line nr: HR per every additional treatment-line. Calcium: HR per 1.0 mmol/L increase of calcium; Log ALP: HR per every doubling of Alkaline phosphatase; >30% ALP decline: >30% ALP decline during treatment from baseline; Log PSA: HR per every doubling of PSA; >30% PSA decline: >30% PSA decline during treatment from baseline; Log LDH: HR per every doubling of Lactate dehydrogenase; Hb+1: HR per every point (g/dL) of hemoglobin increase; Gleason+1: HR per every point of Gleason score increase; No of metastases: HR per increase of number of metastases ranging from 0-1, 2-6, >6 or superscan. Symptomatic: Patients were considered symptomatic when they used analgesics regularly or were treated with EBRT for cancer-related bone pain in the previous 12 weeks; No of Ra223 cycles: every additional cycle after the first Ra-223 cycle.

in patients with a ALP decline after 12 weeks was reported.^{6, 23} A >30% PSA decline from baseline was associated with an even more favorable PFS and OS in univariate analysis when compared to the entire cohort. In contrast to our findings, a post-hoc analysis of ALSYMPCA reported no correlation between PSA response and OS.²³

Compared to ALSYMPCA, patients in the present cohort had more Grade 3 anemia (18% and 11%, respectively). Other hematological AEs were similarly frequent as in ALSYMPCA. The most common non-hematological AEs in the present cohort and in ALSYMPCA were nausea (27% and 36%, respectively), diarrhea (27.7% and 25%, respectively) and fatigue (61.4% and 26%, respectively). The cause of the significant difference in fatigue between the studies is unclear, since there are no major differences between baseline ECOG-performance score and baseline hemoglobin between our cohort and ALSYMPCA. The more advanced and pre-treated stage of non-study mCRPC patients treated with Ra-223 might account for the differences found. However, the differences are mainly in the occurrence of grade 0-2 fatigue (55% and 22%, respectively), while grade 3 (5.9% and 4%, respectively) and grade 4 fatigue (0% and 1%, respectively) are comparable.

An update of safety in ALSYMPCA, 3 years after first injection revealed no new long-term complications or safety concerns.^{6, 24} Also, the present cohort raises no new short-term safety concerns, apart from those already reported in ALSYMPCA. However, the Pharmacovigilance Risk Assessment Committee (PRAC) from the European Medicines Agency (EMA) recently advised to restrict the use of Ra-223 to third line treatment or to patients with no other treatment options.^{25, 26} This recommendation was based on higher mortality and fracture rates in patients treated with Abi and Ra-223 in the ERA-223 trial.²⁷ It was concluded that the mortality was not the result of the interaction between Ra-223 and Abi, but due to Ra-223 treatment alone. In our real-life population, the majority of patients were treated with Ra-223 in second or third line, while the rate of SSE was comparable to ALSYMPCA, where patients were treated in first or second line. This could not be attributed to differences in use of denosumab or bisphosphonates, which was approximately 40% in both studies. Therefore, this study does not support the advice to treat patients in later line with Ra-223 for safety reasons.

In univariate analysis of our cohort, more systemic anti-cancer treatment prior to Ra-223 did not affect PFS. However, line of Ra-223 treatment was associated with OS, which is obviously the consequence of more advanced disease in later lines of treatment. There was no association between prior Abi or Enz treatment and PFS or OS, but both in univariate and multivariate cox-regression analysis, previous Cabazitaxel treatment was associated with a less favorable PFS and OS. The association between prior chemotherapy and shorter survival has been reported in retrospective studies, while Alva et al. reported that prior treatment with Abi or Enz had no negative effect on OS, which agrees with our findings.^{28, 29} Bone-only metastases was associated with favorable PFS and OS in both univariate and multivariate cox-regression analysis. However, in

ALSYMPCA, patients with a single lymphadenopathy of less than 3 cm in the short-axis diameter were included.⁶ In the current study, no data was collected on the extension of extra osseous metastases. Consequently, no new cutoff for the maximum number of lymph nodes involved, in order to benefit from Ra-223 can be suggested.

The main limitation of this study was its non-randomized nature. Moreover, dates of radiological assessments prior, during and after Ra-223 treatment were not prescribed but at the discretion of the treating physician. Another limitation of this study was that there are likely different criteria between the participating centers to select patients for Ra-223 treatment. This might be the result of the absence of reliable data to base selection on. However, these differences in patient selection reflect the non-study nature of the population.

In conclusion, this prospective registry of Ra-223 treatment in a non-study mCRPC population, suggests that Ra-223 is safe and effective. Moreover, efficacy in the non-study population seems comparable with the less treated ALSYMPCA population. Moreover, the data of this non-study cohort suggests that patients not previously treated with Cab, have a favorable outcome. These findings need confirmation.

ACKNOWLEDGEMENTS

This registry could be conducted thanks to a grant from Bayer BV, Mijdrecht, The Netherlands. In addition to the authors, the following investigators contributed to this study (in alphabetical order): F. vd Berkmortel, H.J. Bloemendal, W. vd Deure-Gielisse, V. Dezentje, N. Hagen, H.H. Helgason, C.J. Hoekstra, D. Houtsma, B. de Keizer, J.M.H. de Klerk, K.P. Koopmans, B. Kuenen, M. Los, L. Prompers, T.A. Roeleveld, W. Schreurs, T. Smilde, W. Vogel, T. van Voorthuizen, D.N.J Wyndaele

DISCLOSURE STATEMENT

Bergman participated in Advisory Boards of Janssen Pharma, Bayer, Sanofi and Astellas, received speaking fees from Astellas, Bayer, Jansen Pharma and Astellas and received a research grants from Sanofi and Astellas, not related to this study. Zwart participated in Advisory Boards of Astellas and received research grants of Astellas and AstraZeneca. Haanen has provided consultation, attended advisory boards, and/or provided lectures for: AIMM, Amgen, AZ/Medimmune, Bayer, BMS, GSK, Ipsen, Merck Serono, MSD, Novartis, Pfizer, Roche/Genentech, Sanofi, Seattle Genetics for which NKI received honoraria. He also received grant support from Bayer, BMS, MSD, Novartis, Neon Therapeutics, and Pfizer. All remaining authors have declared no conflicts of interest.

REFERENCES

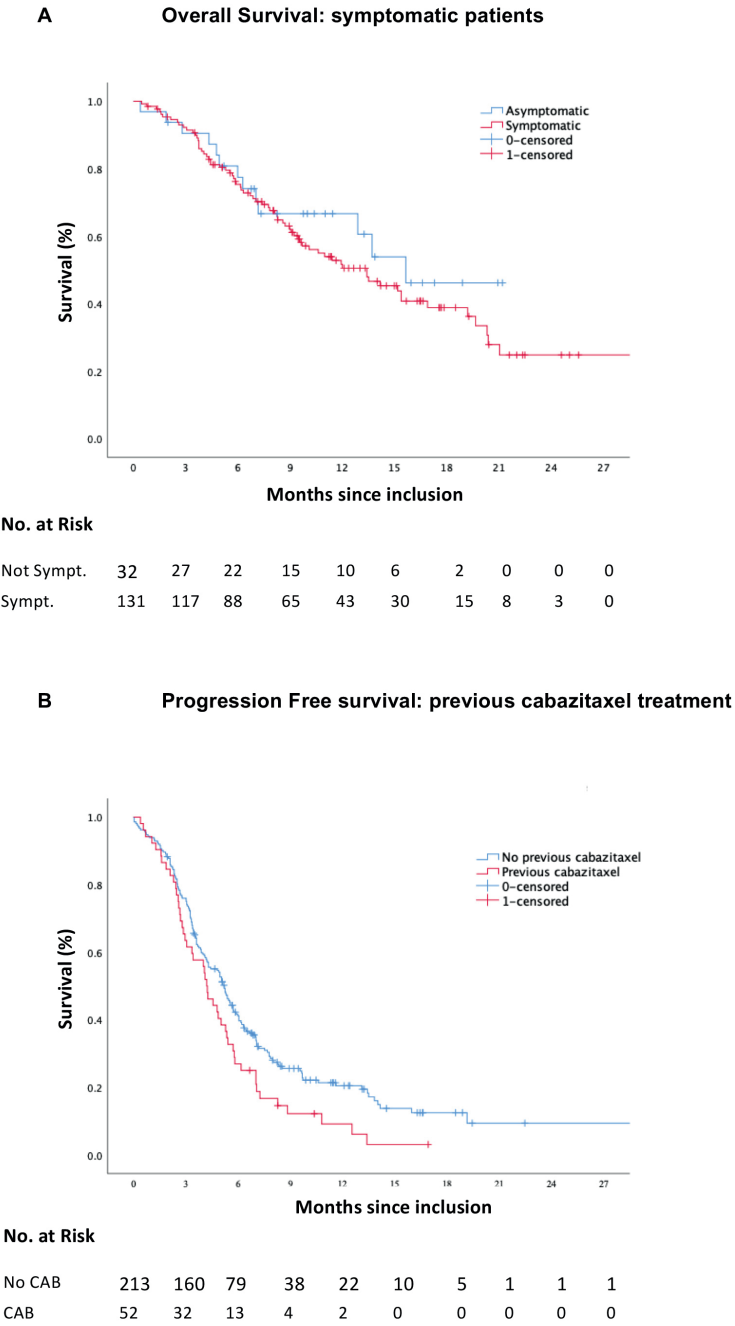
1. Ferlay J, Soerjomataram I, Dikshit R et al. Cancer incidence and mortality worldwide: Sources, methods and major patterns in GLOBOCAN 2012. *Int. J. Cancer* 2015; 136(5):E359–E386.
2. Buzzoni C, Auvinen A, Roobol MJ et al. Metastatic Prostate Cancer Incidence and Prostate-specific Antigen Testing: New Insights from the European Randomized Study of Screening for Prostate Cancer. *Eur. Urol.* 2015; 68(5):885–890.
3. Fischer M, Kampen WU. Radionuclide Therapy of Bone Metastases. *Breast Care (Basel).* 2012; 7(2):100–107.
4. Roodman GD. Mechanisms of Bone Metastasis. *N. Engl. J. Med.* 2004; 350(16):1655–1664.
5. Coleman RE. Clinical Features of Metastatic Bone Disease and Risk of Skeletal Morbidity. *Clin. Cancer Res.* 2006; 12(20):6243s–6249s.
6. Parker C, Nilsson S, Heinrich D et al. Alpha Emitter Radium-223 and Survival in Metastatic Prostate Cancer. *N. Engl. J. Med.* 2013; 369(3):213–223.
7. Dorff TB, Agarwal N. Bone-targeted therapies to reduce skeletal morbidity in prostate cancer. *Asian J. Androl.* 2018; 20(3):215–220.
8. Blacksburn SR, Witten MR, Haas JA. Integrating Bone Targeting Radiopharmaceuticals Into the Management of Patients With Castrate-Resistant Prostate Cancer With Symptomatic Bone Metastases. *Options in Oncol* 2015; 16:11.
9. Nevedomskaya E, Baumgart SJ, Haendler B. Recent Advances in Prostate Cancer Treatment and Drug Discovery. *Int. J. Mol. Sci.* 2018. doi:10.3390/ijms19051359.
10. Scher HI, Fizazi K, Saad F et al. Increased survival with enzalutamide in prostate cancer after chemotherapy. *N. Engl. J. Med.* 2012; 367(13):1187–1197.
11. de Bono JS, Logothetis CJ, Molina A et al. Abiraterone and increased survival in metastatic prostate cancer. *N. Engl. J. Med.* 2011; 364(21):1995–2005.
12. Pezaro CJ, Omlin AG, Altavilla A et al. Activity of Cabazitaxel in Castration-resistant Prostate Cancer Progressing After Docetaxel and Next-generation Endocrine Agents. *Eur. Urol.* 2013. doi:10.1016/j.eururo.2013.11.044.
13. de Bono JS, Oudard S, Ozguroglu M et al. Prednisone plus cabazitaxel or mitoxantrone for metastatic castration-resistant prostate cancer progressing after docetaxel treatment: a randomised open-label trial. *Lancet* 2010; 376(9747):1147–1154.
14. Cancer Institute N. Common Terminology Criteria for Adverse Events (CTCAE) Version 4.0, 2009.
15. Sartor O, Coleman R, Nilsson S et al. Effect of radium-223 dichloride on symptomatic skeletal events in patients with castration-resistant prostate cancer and bone metastases: results from a phase 3, double-blind, randomised trial. *Lancet Oncol.* 2014; 15(7):738–746.
16. Eisenhauer EA, Therasse P, Bogaerts J et al. New response evaluation criteria in solid tumours: Revised RECIST guideline (version 1.1). *Eur. J. Cancer* 2009; 45(2):228–247.
17. Scher HI, Morris MJ, Stadler WM et al. Trial Design and Objectives for Castration-Resistant Prostate Cancer: Updated Recommendations From the Prostate Cancer Clinical Trials

- Working Group 3. *J. Clin. Oncol.* 2016; 34(12):1402–18.
18. The R Core Team. R: A language and environment for statistical computing. R foundation for Statistical Computing, R Foundation for Statistical Computing, Vienna, Austria, 2013.
19. Ryan CJ, Smith MR, Fizazi K et al. Abiraterone acetate plus prednisone versus placebo plus prednisone in chemotherapy-naïve men with metastatic castration-resistant prostate cancer (COU-AA-302): Final overall survival analysis of a randomised, double-blind, placebo-controlled phase 3 study. *Lancet Oncol.* 2015; 16(2):152–160.
20. Beer TM, Armstrong AJ, Rathkopf DE et al. Enzalutamide in Metastatic Prostate Cancer before Chemotherapy. *N. Engl. J. Med.* 2014; 371(5):424–33.
21. van der Doelen MJ, Mehra N, Hermesen R et al. Patient Selection for Radium-223 Therapy in Patients With Bone Metastatic Castration-Resistant Prostate Cancer: New Recommendations and Future Perspectives. *Clin. Genitourin. Cancer* 2018. doi:10.1016/j.clgc.2018.11.008.
22. Fizazi K, Massard C, Smith M et al. Bone-related Parameters are the Main Prognostic Factors for Overall Survival in Men with Bone Metastases from Castration-resistant Prostate Cancer. *Eur. Urol.* 2015; 68(1):42–50.
23. Sartor O, Coleman RE, Nilsson S et al. An exploratory analysis of alkaline phosphatase, lactate dehydrogenase, and prostate-specific antigen dynamics in the phase 3 ALSYMPCA trial with radium-223. *Ann. Oncol. Off. J. Eur. Soc. Med. Oncol.* 2017; 28(5):1090–1097.
24. Parker CC, Coleman RE, Sartor O et al. Three-year Safety of Radium-223 Dichloride in Patients with Castration-resistant Prostate Cancer and Symptomatic Bone Metastases from Phase 3 Randomized Alpharadin in Symptomatic Prostate Cancer Trial. *Eur. Urol.* 2018; 73(3):427–435.
25. On Behalf Of EMA: Reply to Joe O'Sullivan, Daniel Heinrich, Nicholas D. James, et al.'s Letter to the Editor re: The Case Against the European Medicines Agency's Change to the Label for Radium-223 for the Treatment of Metastatic Castration-resistant Prostate Cancer. *Eur. Urol.* 2019; 75(3):e53.
26. European Medicines Agency. Xofigo Article 20 PhV - Public Health Communication, 2018.
27. Smith M, Parker C, Saad F et al. Addition of radium-223 to abiraterone acetate and prednisone or prednisolone in patients with castration-resistant prostate cancer and bone metastases (ERA 223): a randomised, double-blind, placebo-controlled, phase 3 trial. *Lancet Oncol.* 2019; 20(3):408–419.
28. Wong WW, Anderson EM, Mohammadi H et al. Factors Associated With Survival Following Radium-223 Treatment for Metastatic Castration-resistant Prostate Cancer. *Clin. Genitourin. Cancer* 2017; 15(6):e969–e975.
29. Alva A, Nordquist L, Daignault S et al. Clinical Correlates of Benefit From Radium-223 Therapy in Metastatic Castration Resistant Prostate Cancer; Clinical Correlates of Benefit From Radium-223 Therapy in Metastatic Castration Resistant Prostate Cancer. . doi:10.1002/pros.23286.

SUPPLEMENTARY MATERIAL

Supplementary Table 1. Adverse events

	Present at baseline	During treatment
	No. of Patients (%)	No. of Patients (%)
Most common hematologic		
Anemia		
Grade 3	51 (17.6)	54 (18.6)
Grade 4	0 (0)	0 (0)
Thrombocytopenia		
Grade 3	3 (1.0)	9 (3.1)
Grade 4	1 (0.3)	3 (1.0)
Neutropenia		
Grade 3	2 (0.3)	7 (2.4)
Grade 4	0 (0)	1 (0.3)
Most common non-hematologic		
Nausea (all grades)	7 (2.4)	90 (31.0)
Diarrhea (all grades)	1 (0.3)	83 (28.6)
Fatigue (all grades)	47 (16.2)	178 (61.4)
Grade 1-2	40 (13.8)	161 (55.5)
Grade 3	7 (2.4)	17 (5.9)
Grade 4	0 (0)	0 (0)



Supplementary Figure 1.

A: Kaplan-Meier curves of Overall survival in symptomatic and asymptomatic patients. **B:** Kaplan-Meier curves of progression Free survival in patients previously treated with Cabazitaxel

