



Universiteit
Leiden
The Netherlands

Anisotropy, multivalency and flexibility-induced effects in colloidal systems

Verweij, R.W.

Citation

Verweij, R. W. (2021, May 27). *Anisotropy, multivalency and flexibility-induced effects in colloidal systems*. *Casimir PhD Series*. Retrieved from <https://hdl.handle.net/1887/3179461>

Version: Publisher's Version

License: [Licence agreement concerning inclusion of doctoral thesis in the Institutional Repository of the University of Leiden](#)

Downloaded from: <https://hdl.handle.net/1887/3179461>

Note: To cite this publication please use the final published version (if applicable).

Cover Page



Universiteit Leiden



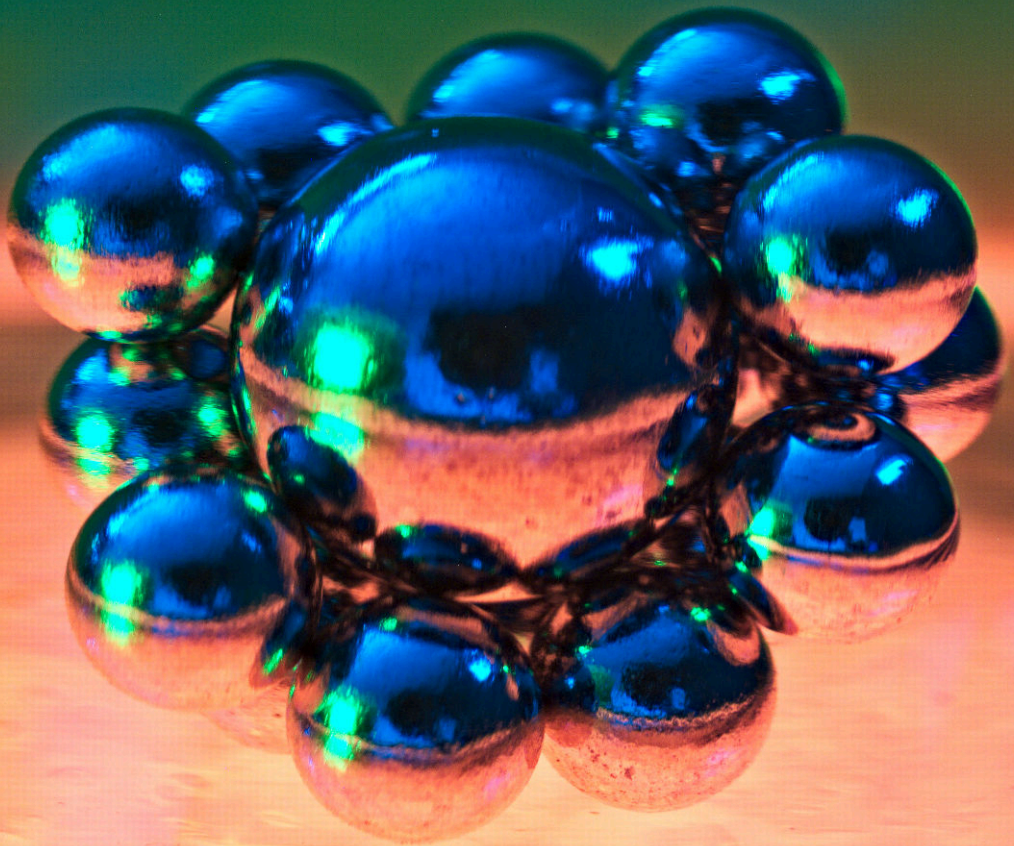
The handle <https://hdl.handle.net/1887/3179461> holds various files of this Leiden University dissertation.

Author: Verweij, R.W.

Title: Anisotropy, multivalency and flexibility-induced effects in colloidal systems

Issue Date: 2021-05-27

3 Colloid-supported lipid bilayers for self-assembly



THE use of colloid-supported lipid bilayers (CSLBs) has recently been extended to create colloidal joints, that enable the assembly of structures with internal degrees of flexibility. Additionally, CSLBs were used to study lipid membranes on curved and closed geometries. These novel applications of CSLBs rely on previously unappreciated properties: the simultaneous fluidity of the bilayer, lateral mobility of inserted (linker) molecules and colloidal stability. Here we characterize every step in the manufacturing of CSLBs in view of these requirements using confocal microscopy and fluorescence recovery after photobleaching (FRAP). Specifically, we have studied the influence of different particle properties (roughness, surface charge, chemical composition, polymer coating) on the quality and mobility of the supported bilayer. We find that the insertion of lipopolymers in the bilayer can affect its homogeneity and fluidity. We improve the colloidal stability by inserting lipopolymers or double-stranded inert DNA constructs into the bilayer. We include surface-mobile DNA linkers and use FRAP to characterize their lateral mobility both in their freely-diffusive and bonded state. Finally, we demonstrate the self-assembly of flexibly linked structures from the CSLBs modified with surface-mobile DNA linkers. Our work offers a collection of experimental tools for working with CSLBs in applications ranging from controlled bottom-up self-assembly to model membrane studies.

3.1 Introduction

Colloid-supported lipid bilayers (CSLBs) are used in a diverse range of research areas and applications,¹¹³ from drug delivery,^{7-9,114-117} bio-sensing,^{15,118} membrane manipulation¹⁹³ and cell biology⁶¹⁻⁶³ to fundamental studies on lipid phase separation^{64,65} and self-assembly.^{85,110-112} The presence of a lipid bilayer around nano- or micrometer-sized solid particles or droplets provides biomimetic properties and a platform for further functionalization. One intriguing recent example used DNA-based linkers to functionalize the lipid bilayer, thereby enabling self-assembly of the underlying colloidal particles or droplets into flexible structures.^{84,85,110-112,194} Within such a structure, the colloidal elements can move over each other's surface while remaining strongly and specifically bonded. This new type of bonding enables fundamental studies on structures with internal degrees of flexibility, such as the self-assembly of novel crystal phases and their phase transitions.^{57,58,119,120} Furthermore,

these complex colloids have great potential for smart drug delivery techniques,⁹ photonic bandgap materials^{59,60} and wet computing.¹⁹⁵

CSLBs are particularly suitable and versatile building blocks for the assembly of floppy structures, because they combine the best qualities of free standing bilayers (vesicles) and colloids. Vesicles, upon applications of linkers,⁵⁵ can connect into flexible structures, but are unstable to small disturbances, heterogeneous in size and easily deformable. Colloidal particles are available in diverse materials and with a variety of stable shapes, and can be assembled after functionalization with surface-bound DNA linkers.^{69,80} However, the obtained structures are often rigid due to the immobility of the linking groups on the particles' surface and are non-equilibrium structures due to a "hit-and-stick" aggregation process.^{77,196} Emulsions coated with lipid monolayers and DNA linkers that are mobile on the droplet interface possess both interaction specificity and bond flexibility.^{56,84,194} Therefore, they assemble into flexible structures in a controlled fashion, but their shape is limited to spheres and they deform upon binding. Conversely, CSLBs consist of colloidal particles which provide a stable support for the lipid bilayer that is tunable in shape, size and material. The range of shapes for colloidal particles comprises, among others, spheres, cubes, rods, and (a)symmetric dumbbell particles, and their sizes range from hundreds of nanometers to several micrometers. They can be produced reliably with a narrow size distribution and are commercially available. Additionally, CSLBs feature a lipid bilayer on the surface of the colloids which creates a liquid film for molecules, such as DNA linkers, to freely move in. This allows for binding particles specifically, and yet non-rigidly, making the assembly of floppy structures possible.^{56,85,110–112}

To obtain flexible instead of rigid structures, it is vital that the linker molecules which are inserted into the lipid bilayer are free to move over the surface of the CSLBs. Their lateral mobility relies on the fluidity and homogeneity of the bilayer, which in turn depend on the linker concentration⁸⁵ and lipid composition. The lipids need to be in the fluid state under experimental conditions, and this may be impeded by bilayer-surface interactions. Similarly, the success of experiments studying the phase separation of lipid bilayers on anisotropic colloidal supports relies on the fluidity and homogeneity of the bilayer.^{64,65} Finally, controlling the self-assembly pathway through DNA linkers with complementary sticky ends implies that all other nonspecific interactions need to be suppressed. In other words, CSLBs need to have sufficient colloidal stability. To the best of our knowledge, these requirements of membrane homogeneity and fluidity plus colloidal stability have not been studied simultaneously. However, they are of key importance for using CSLBs in self-assembly and model membrane studies, while possibly having wider implications for all other applications.

Here, we carefully characterize every stage in the preparation of CSLBs specifically related to these three properties. First, we study the effect of the material properties of the colloidal particles and the use of polymers on the membrane fluidity and homogeneity. Then, we investigate the influence of lipopolymers and inert double-stranded DNA on the colloidal stability of the CSLBs. Subsequently, we in-

clude double-stranded DNA-based linkers connected to hydrophobic anchors and characterize their diffusion in the bilayer. Finally, we show that when using the optimal experimental parameters determined by this study, CSLBs self-assemble into flexibly-linked structures that are freely-jointed.

3.2 Experimental methods

3.2.1 Reagents

Chemicals

The lipids 1-palmitoyl-2-oleoyl-sn-glycero-3-phosphocholine (POPC) and (Δ^9 -Cis)-1,2-dioleoyl-sn-glycero-3-phosphocholine (DOPC), the fluorescently-labeled lipids L- α -Phosphatidylethanolamine-N-(DOPE lissamine rhodamine B sulfonyl) and 23-(dipyrrrometheneboron difluoride)-24-norcholesterol (TopFluor®-Cholesterol) and the lipopolymers 1,2-dioleoyl-sn-glycero-3-phosphoethanolamine-N-[methoxy(polyethylene glycol)-2000] (DOPE-PEG(2000)) and equivalently, DOPE-PEG(3000) and DOPE-PEG(5000) were purchased from Avanti Polar Lipids. 4-(2-hydroxyethyl)-1-piperazineethanesulfonic acid (HEPES, $\geq 99.5\%$) and calcium chloride (CaCl_2 , Calciumchlorid Dihydrat, $\geq 99\%$) were purchased from Carl Roth. Sodium chloride (NaCl , extra pure), hydrogen peroxide (H_2O_2 , 35%w/w), acrylamide (98.5%, extra pure), N,N,N',N'-tetramethylethylenediamine (TEMED, 99%), ammonium persulfate (APS, 98%), sodium hydroxide (NaOH , 98.5%) and sodium azide (NaN_3 , 99%, extra pure) were purchased from Acros Organics. Hellmanex™ III, ammonium hydroxide (NH_4OH , 28-30 %w/w), 3-(trimethoxysilyl)propyl methacrylate (TPM, 98%), Pluronic®F-127, dipotassium phosphate (K_2HPO_4 , $\geq 99\%$), ethanol ($\geq 99.8\%$), sodium dodecyl sulfate (SDS, $\geq 98.5\%$), polyvinylpyrrolidone (PVP, average Mw 40 000), itaconic acid ($\geq 99\%$), 3-aminopropyltriethoxysilane (99%) and acetic acid (99.8%) were purchased from Sigma-Aldrich. Magnesium chloride (MgCl_2 , for analysis) was purchased from Merck. All solutions were prepared with Milli-Q water (Milli-Q Gradient A10).

Buffers

HEPES buffer type 1 was made with 115 mM NaCl, 1.2 mM CaCl_2 , 1.2 mM MgCl_2 , 2.4 mM K_2HPO_4 and 20 mM HEPES. HEPES buffer type 2 consisted of 10 mM HEPES, 40 mM NaCl, 2 mM CaCl_2 and 3 mM NaN_3 . HEPES buffer type 3 consisted of 10 mM HEPES, 40 mM NaCl and 3 mM NaN_3 . The buffers were prepared by mixing all reagents in the appropriate amounts in fresh Milli-Q water. After mixing, the pH was adjusted to 7.4 using NaOH.

Particles

Commercial silica spheres ($(2.06 \pm 0.05) \mu\text{m}$, $(2.12 \pm 0.06) \mu\text{m}$ and $(7.00 \pm 0.29) \mu\text{m}$) were synthesized by Microparticles GmbH, using a Stöber method where tetraethoxysilane (TEOS) reacts with water and bases in an ethanolic solution (sol-gel process). Commercial polystyrene particles ($(2.0 \pm 0.3) \mu\text{m}$) were obtained from Sigma

Aldrich. Hematite cubic particles ($(1.76 \pm 0.08) \mu\text{m}$) were made following the protocol of Sugimoto and Sakata¹⁹⁷ and coated according to Rossi et al.²⁴ Polystyrene-3-(Trimethoxysilyl)propyl methacrylate (Polystyrene-TPM) particles ($(1.24 \pm 0.04) \mu\text{m}$) with varying asperity were synthesized and coated with silica following the protocol of Meester and Kraft.¹⁹⁸ TPM particles ($(2.03 \pm 0.06) \mu\text{m}$) were made following the protocol of Van der Wel et al.¹⁹⁹ TPM particles functionalized with carboxyl groups ($(2.71 \pm 0.14) \mu\text{m}$), or amino groups ($(2.14 \pm 0.07) \mu\text{m}$) were prepared by synthesizing according to Van der Wel et al.¹⁹⁹ and then functionalizing according to Doherty and Kraft.²⁰⁰ Briefly, amine or carboxylic acid groups were incorporated onto the TPM surface by addition of either 3-aminopropyltriethoxysilane or itaconic acid, respectively, during the emulsification stage. Polystyrene particles with carboxyl groups ($(1.99 \pm 0.15) \mu\text{m}$) were synthesized according to Appel et al.²⁰¹ Polystyrene-TPM particles of spherical, symmetric and asymmetric dumbbell shape were made and coated with silica following the protocols reported in Rinaldin et al.⁶⁴

DNA oligonucleotides

All DNA strands were synthesized as single-stranded DNA, purified using reverse phase high-performance liquid chromatography (HPLC-RP) and checked using matrix-assisted laser desorption/ionization time-of-flight mass spectrometry (Maldi-TOF MS) by Kaneka Eurogentec S.A. We used double-stranded inert DNA for steric stabilization and double-stranded DNA linkers with a sticky end for binding. Both types of DNA have a hydrophobic anchor (double stearyl/double cholesterol for linker and double cholesterol for inert DNA) connected to a short carbon chain which is then connected to the oligonucleotide. The linkers are additionally functionalized with a fluorescent dye. All strands, including all functionalizations, are listed in Table A.1. These DNA strands were hybridized by mixing the single strands in a 1:1 molar ratio in HEPES buffer type 3. The solution was then heated in an oven to 90°C for 30 min, after which the oven was turned off and the solution was allowed to cool down slowly overnight in the closed oven. From now on, for the strands given in Table A.1, we label strand CH-10-H as “10 nm Inert DNA”, strand CH-20-I as “20 nm Inert DNA”, strand CH-20-H-A as “20 nm Linker A”, strand CH-20-H-B as “20 nm Linker A'”, strand DS-H-A as “30 nm Linker A” and, finally, we label strand DS-H-B as “30 nm Linker A'”. The linkers “A” have a single-stranded sticky end (indicated by cursive text in Table A.1) that is complementary to the single-stranded end of linkers “A'”.

3.2.2 Preparation of CSLBs

Typically, CSLBs were made by spontaneous spreading and fusion of small unilamellar vesicles (SUVs) on the particle surface. An SUV dispersion prepared via either extrusion or sonication was mixed with the particles, allowing a bilayer to spread on the surface for at least one hour. Subsequently, the CSLBs were washed to remove excess SUVs. We observed no substantial differences in the obtained CSLBs between the two methods presented here.

CSLB preparation: method 1

500 μg of a mixture of DOPE-Rhodamine (0.2 mole%) and varying amounts of POPC and PEGylated lipids was dried by two hours of vacuum desiccation and then re-suspended to a 2 g L^{-1} dispersion with HEPES buffer type 1. The solution was vortexed for 15 min to produce multilamellar vesicles. Then, the vesicle dispersion was extruded 21 times with a mini extruder (Avanti Polar Lipids) equipped with two 250 μL gas-tight syringes (Hamilton), two drain discs and one nucleopore track-etch membrane (Whatman). The pore size of the membrane was 0.05 or 0.1 μm for experiments with DOPE-PEG(2000) and DOPE-PEG(3000-5000), respectively. The as-prepared 50 μL of SUVs were added to 1 mL of 0.05 %w/v of particles dispersed in HEPES buffer 1. The particles were gently rotated for 1 h. The resulting dispersion was centrifuged at 419 rcf for 1 min and the supernatant replaced with HEPES buffer type 1 to remove any SUVs present in the dispersion.

This method was used for all experiments regarding the influence of particle material, surface roughness and the effect of polymer insertion on the spreading and mobility of the lipid bilayer.

CSLB preparation: method 2

Typically, a lipid mixture consisting of 98.9 mol % DOPC, 1 mol % DOPE-PEG(2000) and 0.1 mol % DOPE-Rhodamine or TopFluor-Cholesterol in chloroform was dried overnight in a glass vial covered with aluminum foil under vacuum desiccation. We investigated different PEGylated lipid lengths and molar ratios. After drying, 1 mL HEPES buffer type 2 or 3 was added to reach a concentration of 2 g L^{-1} . The dispersion was vortexed for 30 min, after which it became turbid. It was then transferred to a plastic test tube and ultrasonicated using a tip sonicator (Branson Sonifier SFX150) set to 30 % of its maximum amplitude for a total time of 30 min using a pulsed sequence (18 s on/42 s off, total on time 9 min) on ice to prevent heating. The SUV dispersion was then centrifuged for 45 min at 2029 rcf to sediment larger vesicles and titania particles originating from the tip.⁴⁴ 200 μL SUVs were taken from the top to isolate the smallest vesicles.

17 μL of 0.5 g L^{-1} SUVs in HEPES buffer 2 or 3 were mixed with 35 μL 0.5 %w/v of particles in Milli-Q water, leading to a surface ratio of SUVs:particles of 8:1. The dispersion was gently rotated for 1 h. The particles were centrifuged at 43 rcf for 2 min and the supernatant was replaced with HEPES buffer type 2 or 3 to remove any remaining free SUVs from the dispersion. Alternatively, the particles were allowed to sediment by gravity for 30 min instead of centrifuging and the supernatant was replaced.

This method was used for all experiments regarding the colloidal stability of CSLBs, the mobility of inserted DNA and the mobility of self-assembled CSLB clusters.

3.2.3 Coating CSLBs with DNA for self-assembly

After the particles were coated with a lipid bilayer using method 2, various amounts of inert and/or linker DNA were added and the dispersion was gently rotated for 1 h.

To remove any remaining free DNA strands in solution, the particles were washed by centrifugation for 2 min at 43 rcf, or alternatively, by sedimentation by gravity for 30 min, and the supernatant was replaced three times by HEPES buffer type 2 or 3.

We characterize the amount of dsDNA that we add as a surface density σ_{DNA} , which we define as follows:

$$\sigma_{\text{DNA}} = \frac{N_{\text{DNA}}}{A_{\text{CSLB}}}, \quad (3.1)$$

where N_{DNA} is the total number of dsDNA strands and A_{CSLB} is the total surface area of the CSLBs. The total number of dsDNA strands and particles were estimated from the reported stock concentrations. In this calculation, we assume that all the added dsDNA strands are distributed homogeneously over all particles and that no dsDNA remains in solution. We typically used $\sigma_{\text{DNA}} = 320 \mu\text{m}^{-2}$ dsDNA linkers to obtain flexible structures.

Particle clusters were formed by mixing two particle types coated with complementary DNA linkers in a 1:1 number ratio in a round metal sample holder equipped with a polyacrylamide-coated glass cover slip (see Van Der Wel et al.²⁰² for details). The polyacrylamide coating keeps the particles from sticking to the glass surface, allowing them to cluster via diffusion limited aggregation.

3.2.4 Sample characterization

The samples were imaged with an inverted confocal microscope (Nikon Ti-E) equipped with a Nikon A1R confocal scanhead with galvano and resonant scanning mirrors. A $100\times$ oil immersion objective (NA = 1.49) was used. A 561 nm laser was employed to excite the Lissamine Rhodamine dye, a 488 nm laser was used to excite the TopFluor-Cholesterol dye. The excitation light passed through a quarter wave plate to prevent polarization of the dyes. 500-550 nm and 565-625 nm filters were used to separate the emitted light from the TopFluor and the Rhodamine dyes, respectively.

The charge of the particles in Milli-Q water was determined via zeta potential measurements using a Malvern Zetasizer Nano ZS.

3.2.5 Fluorescence recovery after photobleaching (FRAP)

We used fluorescence recovery after photobleaching (FRAP) to check the mobility of the lipids in a CSLB. A circular area of the fluorescent sample was bleached, the recovery signal was collected and normalized as

$$I_{\text{corr}}(t) = \frac{I(t)}{I(t=0)I_{\text{ref}}(t)}, \quad (3.2)$$

where $I_{\text{corr}}(t)$ is the measured intensity $I(t)$ normalized with respect to the intensity just before bleaching $I(t=0)$ and corrected for bleaching through measurement of the intensity of a non-bleached reference area, $I_{\text{ref}}(t)$. Additionally, we subtracted the background signal from I and I_{ref} . We found that the signal can be fitted using the

following expression:

$$I_{\text{corr}}(t) = A \left(1 - \exp \left[-\frac{t - t_0}{\tau} \right] \right) \quad (3.3)$$

where A is the extent of the recovery, $t - t_0$ is the time elapsed since the beginning of the recovery process and τ the recovery time.

While there is a simple relation linking τ to D for circular bleaching areas on planar surfaces,²⁰³ we are not aware of a similar expression for a spherical surface that is partly bleached from the side, as is the case in our experiments. Therefore, we quantify the lateral mobility in terms of the recovery time τ only.

All FRAP experiments on silica particles were performed using $7 \mu\text{m}$ particles, unless stated otherwise. To measure the lateral mobility of DNA linkers using FRAP, no fluorescently-labeled lipids were used and instead, we used a high linker DNA concentration ($\sigma_{\text{DNA}} = 3 \times 10^5 \mu\text{m}^{-2}$) that provided a sufficiently bright fluorescent signal.

3.2.6 Particle stability analysis

To estimate the colloidal stability of particles, we rotated the particles (0.4 %w/w) in a test tube for at least 1 h, thereby allowing them to aggregate. We then immobilized some of the clusters on a glass substrate, allowing us to take a “snapshot” of the cluster distribution at that time. Particles were located in brightfield microscopy images of these sedimented, semi-dilute (volume fraction $\phi \approx 0.001$) samples. The cluster sizes were determined by using the `bandpass`, `locate` and `cluster` functions from `TrackPy`.¹⁸⁸ Erroneously tracked positions were corrected manually. The separation distance below which particles are considered to be part of a cluster was chosen to be $2.2R$, where R is the particle radius. This can lead to a small overestimation of the number of clusters when particles are close together but have not irreversibly aggregated. We defined the fraction of single particles f_{single} as the number of detected clusters with a size of 1 (i.e. single particles) divided by the total number of individual particles. The error on this fraction was estimated as the standard deviation of the average cluster size divided by the square root of the total number of particles. For each measurement, we analyzed between 150 to 4000 individual particles.

3.2.7 Trimer flexibility analysis

We have analyzed three linearly-connected CSLBs that were functionalized with inert dsDNA and linker dsDNA. To quantify the mobility of the self-assembled trimers, we tracked the position of the three individual particles in brightfield movies as a function of time and calculated the opening angle θ between them. For tracking and calculating θ , we used a custom algorithm that is depicted in Figure 3.1.

First, the user selects the particles of interest from the first frame (see Figure 3.1a). This increases the computational efficiency of tracking because it reduces the number of tracked features and allows for cropping of all frames. We then iterate over all

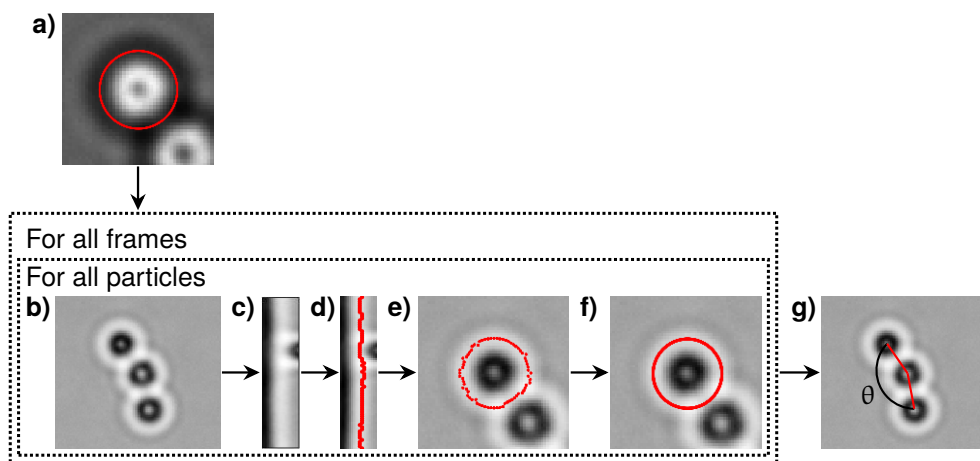


Figure 3.1: **The algorithm used for tracking particles** in brightfield movies, depicted graphically. **a)** The user selects the particles that need to be tracked from the first frame using a Matplotlib²⁰⁴ interface. **b)** The current frame is inverted so that the dark ring around features becomes bright. **c)** The frame is interpolated and converted to polar coordinates with the current provisional particle position at the origin. **d)** For each row (corresponds to each polar angle), the position with the maximum intensity is found (for intensities higher than a set threshold). **e)** The coordinates that were found are then converted to the original Cartesian coordinates. **f)** A circle is fit to the coordinates using a least-squares method. **g)** The opening angle between the three particles is determined, whilst keeping the particle order the same for all frames.

frames to identify the positions of the selected particles. Each current frame is inverted, so that all particles have a ring of high intensity around them (see Figure 3.1b). The frame is converted to polar coordinates with the current provisional particle position at the origin (see Figure 3.1c), where the provisional position is the one that the user selected for the first frame and the previous tracked position for all subsequent frames. For each row (each polar angle), the position of maximum intensity is found (see Figure 3.1d) and these coordinates are then converted back to the original Cartesian coordinate system of the frame (see Figure 3.1e). A circle is fitted to these coordinates using a least-squares method (see Figure 3.1f). After all three particles are found in this frame, the opening angle between them is determined using simple trigonometry (see Figure 3.1g). From the opening angles of all the frames, we calculated the mean squared displacement of the angle (MSAD) or, equivalently, the “joint flexibility”,⁸⁵ which we label as J .

We analyzed the free energy of trimers as function of opening angle using two methods: first, by converting the histogram to the free energy using Boltzmann weighing and second, using a maximum-likelihood estimation method of angular displacements.^{202,205} We confirmed that both methods agreed and show only the result of

the maximum-likelihood method, because it allows us to estimate the error in our measurement. We now describe these methods in detail.

Trimer free energy: Boltzmann weighing

We obtained a histogram of opening angles between 60 deg to 300 deg with a bin width of 3 deg. We then mirrored and averaged the data around 180 deg and converted this to a probability density function. From the probability density function we determined the free energy using Boltzmann weighing,

$$\frac{F}{k_B T} = -\ln p + \frac{F_0}{k_B T}, \quad (3.4)$$

where F is the free energy, k_B is the Boltzmann constant, T is the temperature, p is the probability density and F_0 is a constant offset to the free energy, which we chose at a reference point (180 deg) so that the free energy is equal to zero there.

Trimer free energy: maximum-likelihood estimation

While the Boltzmann weighing method is very straightforward, it gives no information about the experimental error. To estimate the error, we used an analysis that is based on a maximum-likelihood method in which particle displacements are modeled,^{202,205} which we adapted for our experimental system. We used (angular) displacements because for Brownian particles they are uncorrelated in time, in contrast to positions, or values of the opening angle. This means that using this method, we can obtain reliable results even for a limited number of particles.²⁰⁶

To summarize, we followed the method outlined in subsection 3.4.2 of Van der Wel:²⁰⁵ we find the maximum-likelihood estimate of the local force field $F(\theta)$ by using a model for the transition probability P :

$$P(\theta_1, t + \tau | \theta_0, t) = (4\pi D\tau)^{-1/2} \exp\left(-\frac{(\Delta\theta - \beta DF(\theta)\tau)^2}{4\pi D\tau}\right) \quad (3.5)$$

where θ_0 is the opening angle at a time t and θ_1 is the angle at a later time $t + \tau$, τ is the time between measurements, D is the diffusion coefficient determined from the mean squared displacement, $\Delta\theta = \theta_1 - \theta_0$ and β is the Boltzmann constant times the temperature. A Bayesian method was used to find the maximum-likelihood estimate by using emcee²⁰⁷ and the error was determined as the standard deviation of the chain of Markov Chain Monte Carlo (MCMC) samples. We determined the free energy up to an arbitrary choice of a reference energy by numerical integration of this force. This free energy was then mirrored around 180 deg and averaged to determine the free energy between 60 deg and 180 deg. We observed a boundary effect inherent to the analysis for angles smaller than $60 \text{ deg} + \sqrt{2J\tau}$ (where J is the joint flexibility) leading to a slight overestimation of the free energy for those angles.

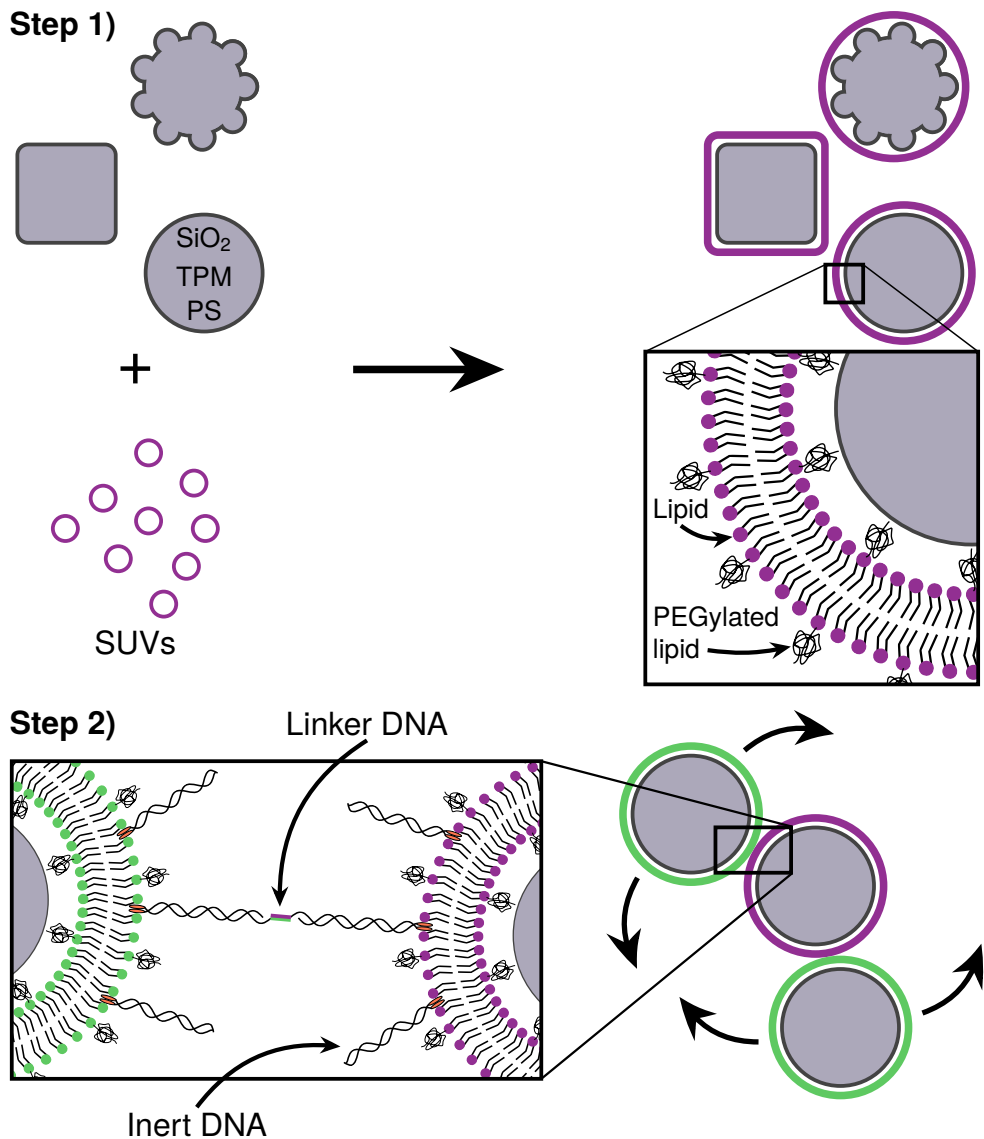


Figure 3.2: **Overview of the experimental system.** Not to scale. **Step 1)** Micrometer-sized colloidal particles are coated with a lipid bilayer by adding small unilamellar vesicles (SUVs) that rupture and spread on the particle surface. We varied the composition of the lipids, as well as the material and shape of the particles. **Step 2)** DNA linkers with hydrophobic anchors can be added to make particles that are functionalized with DNA with complementary sticky ends. When the lipid bilayer is fluid, the linkers can diffuse over the particle surface and therefore also the linked particles can slide over each other.

3.3 Results and Discussion

We will now characterize every step in the formation of CSLBs. In the first section of the results we study the homogeneity and mobility of the lipid bilayer on colloidal particles made from different materials, and therefore various surface functionalities and degrees of roughness. Furthermore, we investigate the effect of PEGylated lipids on the homogeneity and mobility of the lipid bilayer and their use as steric stabilizers to prevent nonspecific aggregation.

Having found conditions that yield colloidal particles with a homogeneous and mobile bilayer, we subsequently introduce double-stranded DNA connected to a hydrophobic anchor into the bilayer, as shown in Figure 3.2.2. We employ DNA constructs both with and without single-stranded sticky ends, to investigate their use in DNA-mediated binding and their effect on colloidal stability, respectively. Finally, we demonstrate that CSLBs can be used for self-assembly by employing DNA linkers with complementary single-stranded sequences. We use FRAP to measure the lateral mobility of DNA linkers on the particle surface inside and outside the bond area. In this way, we show that they are mobile if the bilayer is fluid and that, in this case, the particles can freely roll over each other's surfaces when bonded.

3.3.1 Lipid bilayer coating of colloidal particles

To use CSLBs in self-assembly studies or as model membrane systems, it is critical that a homogeneous and fluid bilayer forms on the colloidal particles. This implies successful assembly of both leaflets of the bilayer and lateral mobility of the lipids, and hence proteins, linkers, and larger lipid domains, in the membrane. The formation of lipid bilayers on solid supports can be achieved by deposition of SUVs under physiological conditions, as shown in Figure 3.2.1. A combination of electrostatic and Van der Waals forces lead to spreading and fusion of the liposomes on the surface of the supports.^{43,45,208,209} Between the surface of the support and the bilayer a thin layer of water remains, allowing the lipids to laterally diffuse in the absence of other motion-restricting forces. Previous studies on planar SLBs reported that there are many factors which can prevent homogeneity and mobility of the bilayer.²¹⁰ These factors are related to the surface that is coated (its surface charge, chemical composition and roughness), the aqueous medium (pH and ionic strength), the SUVs (composition, charge, size, transition temperature) and the temperature at which the lipid coating happens.^{45,46} Here we will study how some of these factors, that are inherent to the use of solid particles, influence the formation of supported lipid bilayers on colloidal substrates.

Influence of the chemical properties of the particle surface

The available variety of colloids with anisotropic shapes makes them attractive for self-assembly and model membrane studies. Current synthetic procedures tailored to obtain different shapes, however, typically rely on the use of specific materials and therefore yield colloids with different surface properties. We have selected

Table 3.1: Classification of bilayer spreading and mobility based on the material and the surface charge of the colloidal substrates. All Zeta potential measurements were performed in Milli-Q water at room temperature.

Material	Zeta pot. [mV]	Homogeneous	Fluid
Silica spheres (Stöber, Microparticles GmbH)	-56 ± 6	yes	yes
Hematite cubic particles ¹⁹⁷	$+39 \pm 5$	no	no
Silica-coated hematite cubic particles ²⁴	-32 ± 6	yes	yes
Polystyrene (PS) spheres (Sigma Aldrich)	-38 ± 2	no	no
PS spheres with carboxyl groups ²⁰¹	-43 ± 1	no	no
Silica-coated PS-TPM anisotropic particles ⁶⁴	-33 ± 1	yes	yes
TPM spheres ¹⁹⁹	-42 ± 1	yes	no
TPM spheres with carboxyl groups ²⁰⁰	-46 ± 1	no	no
TPM spheres with amino groups ²⁰⁰	-12 ± 4	no	no

a range of particles of different shapes and commonly used materials to test for membrane homogeneity and mobility after coating with SUVs. In particular, we tested silica spheres prepared by a sol-gel method, commercially available polystyrene spheres, polystyrene spheres with carboxyl groups made using a surfactant-free dispersion polymerization method,²⁰¹ 3-(trimethoxysilyl)propyl methacrylate (TPM) spheres,¹⁹⁹ TPM spheres functionalized with carboxyl and amino groups,²⁰⁰ silica-coated polystyrene-TPM spheres and symmetric and asymmetric dumbbells;⁶⁴ as well as hematite cubes¹⁹⁷ and silica-coated hematite particles.²⁴ Silica-coated polystyrene-TPM dumbbells and hematite cubes were obtained by depositing a silica layer following the Stöber method.²¹¹

After coating, we visually inspect the lipid-coated particles using confocal microscopy and consider bilayers to be homogeneous if more than 50% of the particles do not show defects in the bilayer. We characterize the bilayer fluidity by measuring the mobility of the fluorescently-labeled lipids on the colloid surface using FRAP. After bleaching, we observe the recovery of the fluorescence intensity due to the diffusion of the dyed lipids in and out of the bleached area. We consider the lipids and thus the bilayer to be mobile if the intensity signal recovers homogeneously in the bleached area, otherwise we consider them to be (partially) pinned to the surface.

Our first observation was that only particles that possess a silica surface exhibited homogeneous and mobile bilayers (Table 3.1). We did not succeed in coating colloids made from polystyrene or hematite with a homogeneous bilayer. However, once such substrates were first coated with a silica shell, the bilayer was found to be both homogeneous and mobile. Unexpectedly, particles made from an organosilica compound (TPM) whose surfaces are similar to silica¹⁹⁹ only showed homogeneous, but not mobile bilayers. Since silica, TPM and polystyrene colloids were all negatively

charged, we conclude that the chemical composition of the substrate and not only the surface charge plays a fundamental role in the homogeneity and fluidity of the bilayer. These results agree with previous experiments on planar SLBs, in which silica-based surfaces were found to be one of the most reliable supports for homogeneous and mobile lipid bilayers.⁴⁵

Since colloidal particles are often functionalized with different groups on the surface, we furthermore have characterized the bilayer on particles equipped with surface groups commonly used in colloidal science (Table 3.1). While TPM particles with an unmodified silica-like surface showed homogeneous bilayers, we found that functionalization with negatively charged carboxyl or positively charged amino group prevented spreading and fusion of the lipid vesicles. Likewise, functionalization of polystyrene spheres with carboxyl groups did not enhance the homogeneity of the lipid bilayer. A previous study on planar SLBs reported that the spreading of SUVs depends on the combination of the molecular ions in the buffer and the type and density of surface charge.²¹² While amino-functionalized surfaces are hence expected to disrupt the spreading of SUVs in the presence of the negatively charged HEPES molecules of the buffer, the observation of inhomogeneous bilayers on carboxyl-functionalized surfaces can likely be allocated to an insufficiently dense surface coverage. We conclude that similar to planar SLBs, the homogeneity and fluidity of the bilayer of CSLBs is dependent on a complex interplay of the chemical and physical properties of the lipids and the particle's surface.

Influence of particle curvature differences

Another factor that may influence the successful formation of a homogeneous and mobile bilayer is the variation in curvature of the colloidal substrate, which may hinder spreading and fusion of SUVs. Curvature differences can originate from the overall anisotropic shape of the particles or from surface roughness. As discussed before, we found that particles with a comparably slowly varying curvature, such as hematite cubes or symmetric and asymmetric dumbbells (see Table 3.1), had a fluid and homogeneous bilayer after coating, if they featured a silica surface clean of any polymer residues from synthesis. Particles with rough surfaces, however, have a much higher and frequent variation in curvature. To investigate the effect of large curvature differences, we prepared two batches of polystyrene particles which only differed in their surface roughness and coated them with a silica layer following a Stöber method.¹⁹⁸ In Figure 3.3 we show that particles with some roughness (b) can be homogeneously coated with a bilayer (a) while particles with very rough surfaces (e) show an inhomogeneous bilayer (d). FRAP experiments confirmed that the bilayer on the "smooth" surface is not only homogeneous, but also mobile, as shown by the recovery in Figure 3.3c. On the contrary, the inhomogeneous bilayer on the rough particle is immobile as indicated by the non-recovering intensity signal in Figure 3.3f. We conclude that the roughness of the surface plays an important role in both bilayer homogeneity and mobility.

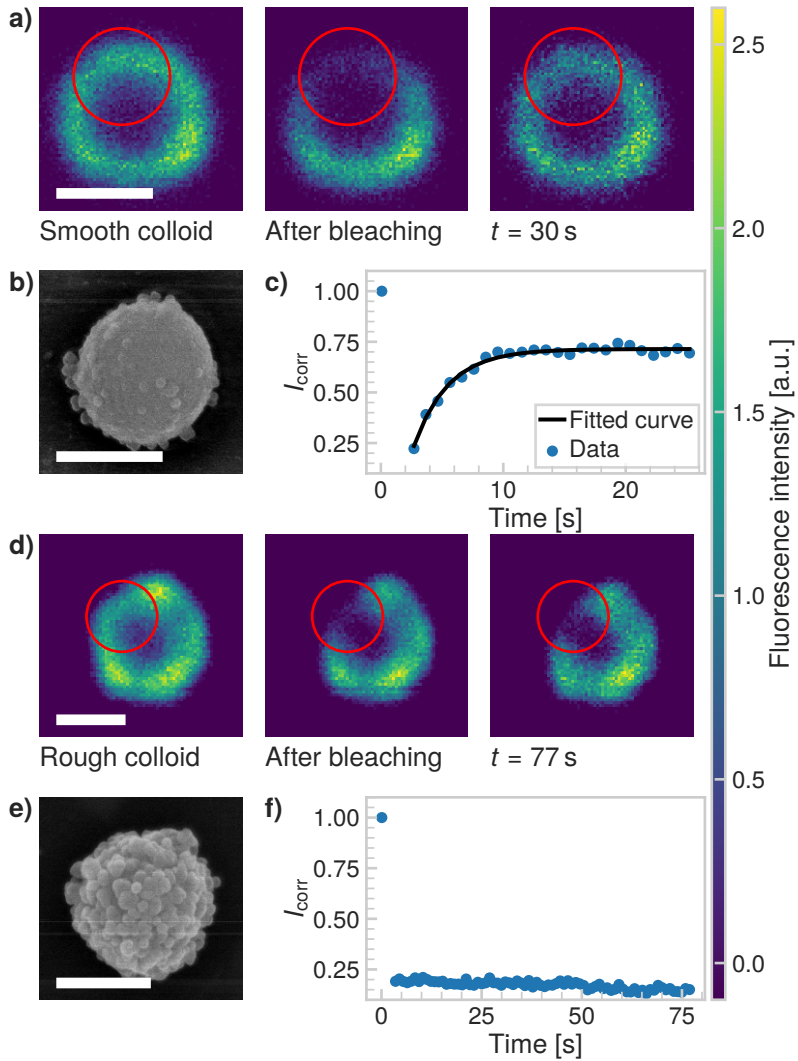


Figure 3.3: **Effect of surface roughness on lipid bilayer formation.** Sequence of a FRAP experiment before bleaching, just after bleaching and after 30s and 77s for the **a)** smooth and **d)** rough particle, respectively. Scanning electron microscopy images (SEM) images of **b)** a smooth and **e)** rough polystyrene-TPM particle coated with silica. On the right, the fluorescence intensity as a function of time and an exponential fit of the data for the **c)** smooth and **f)** rough particle are shown. The fluorescence recovery of the bilayer on the smooth particle shows that the bilayer is fluid, in contrast to the rough particle which does not show a recovery of the fluorescence. Scale bars are $1 \mu\text{m}$.

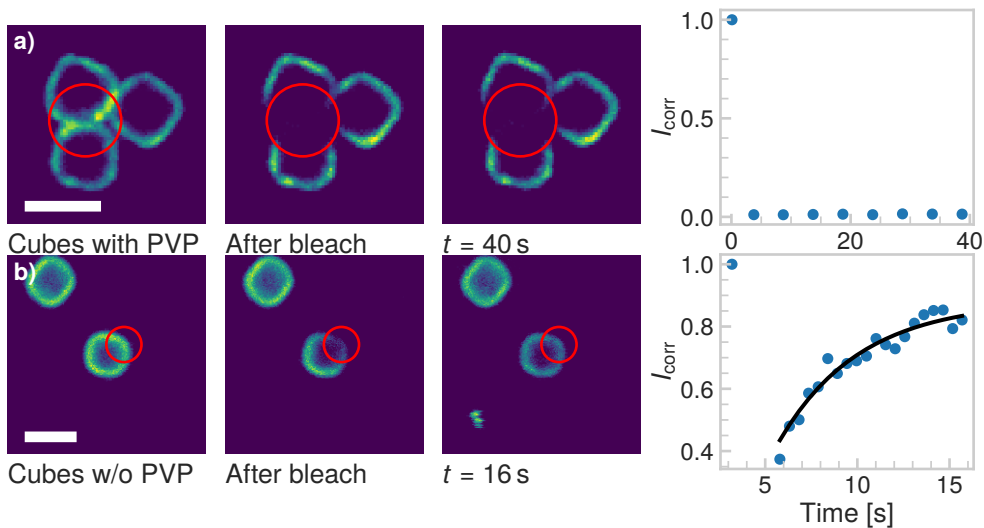


Figure 3.4: **Effect of PVP on CSLB formation.** FRAP experiment on a group of three cubes with a) and without b) PVP. Only the sample without PVP shows recovery of the signal in the bleached area. Scale bars are 2 μm .

Influence of free and grafted polymers

Polymers or surfactants are often employed to stabilize colloidal particles in solution,^{213–215} but may influence the formation and mobility of the bilayer in CSLBs. Here, we test how the presence of, for example, leftover polymers from particle synthesis, affects the bilayer. We compare a sample of silica-coated hematite cubes with and without PVP, a polymer commonly used in colloidal syntheses and conservation. To remove the PVP from the surface after synthesis, we calcinated the colloids at 500 $^{\circ}\text{C}$ for 2h. Figure 3.4 shows that cubes with PVP (Figure 3.4a) possess an inhomogeneous bilayer and the ones without it feature a bilayer that homogeneously covers the surface (Figure 3.4b). As expected for Stöber silica surfaces, the bilayer on the colloids for which the PVP was removed is also mobile, as indicated by the recovery of the fluorescence intensity.

Moreover, the presence of polymers may not only affect the bilayer's properties, but also the incorporation of functional groups such as DNA linkers into it. We tested this by preparing CSLBs with fluorescently-labeled DNA linkers connected to double cholesterol anchors and then transferring an aliquot of this dispersion to a HEPES solution containing 5% w/w of Pluronic F-127, a polymer that is commonly used for the stabilization of colloidal particles. While the fluorescent signal of the CSLBs with and without F-127 were initially equal, already 15 minutes after mixing we observed less dsDNA fluorescence on the CSLBs with F-127 compared to particles without it. After 1 h, the fluorescence intensity of the CSLBs with F-127 was comparable to that of control particles not coated with linker dsDNA (Figure 3.5a-d). We therefore conclude

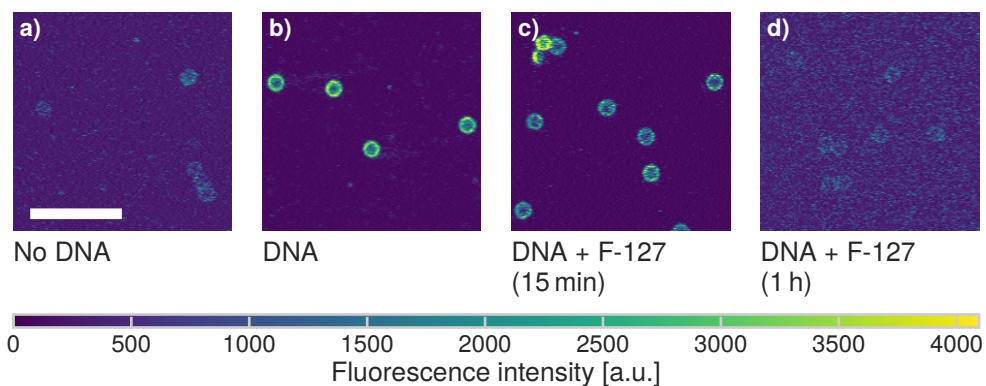


Figure 3.5: **Influence of F127 in linker inclusion.** **a)** Control image of the fluorescence of the undyed CSLBs. **b)** Fluorescence intensity of CSLBs coated with 20 nm linker dsDNA. **c)** The same sample as in panel b, but imaged 15 min after dispersion in 5 % F-127 solution. The fluorescence on the particles was found to be significantly less homogeneous than in panel b. **d)** The same sample as in panel b, but imaged 1 h after dispersion in 5 % F-127 solution. The fluorescence intensity is comparable to the uncoated control in panel a so we conclude that all dsDNA has been removed from the bilayer by F-127. Scale bar is 10 μm .

that F-127 removed the cholesterol-anchored linker DNA from the bilayer, in line with recent experiments on emulsion droplets coated with mobile DNA linkers.²¹⁶

Influence of PEGylated lipids on bilayer homogeneity and mobility

The presence of polymers in SLBs is not always detrimental, but may even improve bilayer mobility. Previous studies on planar SLBs showed that membranes can be supported by polymers covalently bound to lipids, constructs also known as lipopolymer tethers.^{217–221} Since lipopolymer tethers increase the thickness of the water layer between the solid support and the bilayer,^{217–219} they are thought to reduce the friction between the substrate and the bilayer, allowing for higher diffusivity of lipid molecules and linkers.

Inspired by this, we study how a specific lipopolymer tether affects the spreading and the fluidity of the bilayer in CSLBs. We used the lipopolymer DOPE-PEG, a phospholipid with a covalently-bound PEG molecule. We employed PEGylated lipids with three different molecular weights: 2000, 3000 and 5000 g mol^{-1} in varying concentrations. It is important to note that PEGylated lipids were introduced in the system during the SUV formation by mixing them with the other lipids. This means that once the bilayer is formed, they are present in both leaflets.

We report in Figure 3.6a-b the effect of varying concentration and molecular weight of the lipopolymers on the spreading and the mobility of the bilayer. In the absence of PEGylated lipids, the bilayer on the CSLBs was observed to be fluid. At increased

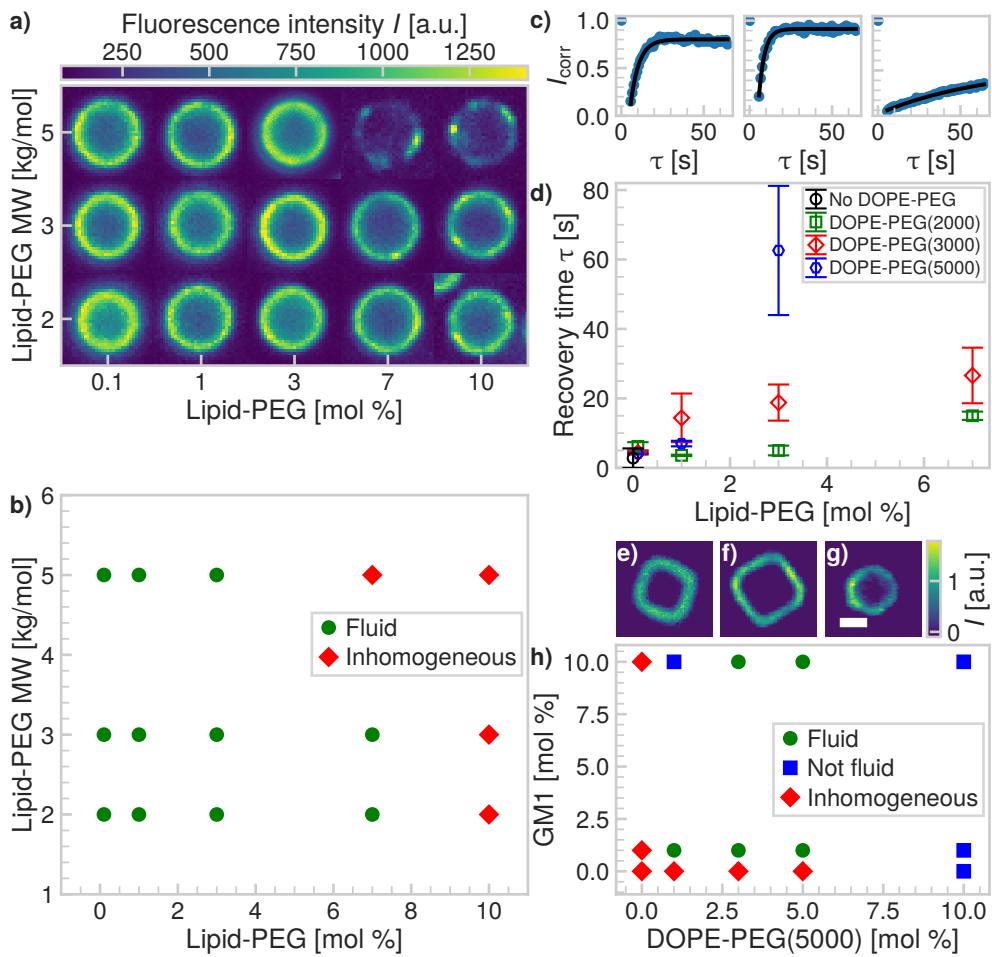


Figure 3.6: Effect of PEGylated lipids on CSLB formation and fluidity. **a)** Colormap of the intensity of the bilayer of spherical CSLBs ordered by increasing molecular weight and concentration of PEGylated lipids. The images are taken in the equatorial plane. **b)** Phase diagram of the state of the bilayer for varying molecular weight and concentration of PEGylated lipids. **c)** Intensity recovery curves as a function of time from FRAP experiments of, from left to right, CSLBs without PEGylated lipids, with 1 mol % DOPE-PEG(2000) and 3 mol % DOPE-PEG(5000). **d)** Plot of the recovery time after FRAP depending on molar concentration and size of the PEGylated lipids. Colormap of a fluorescent image of a cubic bilayer made with **e)** 1 mol % GM1 and 3 mol % DOPE-PEG(5000), **f)** 1 mol % GM1 and 10 mol % DOPE-PEG(5000), **g)** no GM1 or DOPE-PEG(5000). Scale bar 1.5 μm . **h)** Phase diagram of spreading and fluidity of the bilayer on cubic silica shells depending on GM1 and PEGylated lipids.

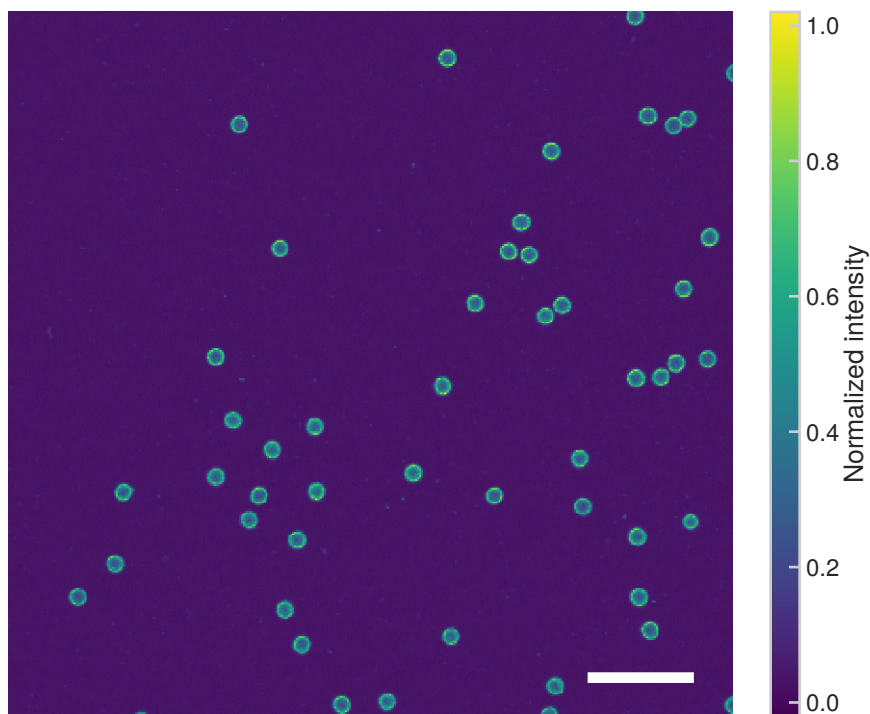


Figure 3.7: **Overview picture showing the homogeneity of the lipid bilayer** for CSLBs containing 1 mol % DOPE-PEG(2000). The scale bar is 15 μm .

concentrations of DOPE-PEG, the bilayer became inhomogeneous, which indicates insufficient spreading and fusion of the SUVs. This effect appeared at lower molar fractions for lipopolymers with higher molecular weights of the DOPE-PEG. For completeness, we note that a small fraction of particles in samples that are labeled as inhomogeneously coated do exhibit a homogeneous, but nevertheless immobile, bilayer. We believe that the reason for the observed inhomogeneity is twofold. On the one hand, higher concentrations of lipopolymers lead to an increased steric stabilization, that prevents fusion of the SUVs and hinders the van der Waals interactions between the SUVs and the substrate that aid spreading. On the other hand, PEGylated lipids in the brush state increase the bending rigidity of the SUV membrane, thereby preventing rupture and spreading on the surface.²²²

For fluid membranes, we quantified the mobility of the lipids by calculating the recovery time from FRAP experiments, which is the time it takes a bleached area to recover its fluorescence intensity. We find that the diffusion of the lipids is faster for PEGylated lipids with a lower molecular weight and increases with decreasing amount of the lipopolymers, see Figure 3.6c-d. This latter result agrees with a study performed on planar supported lipid bilayers.²¹⁷ In the presence of lipopolymers,

we find the shortest recovery time ((3.20 ± 0.02) s), e.g. highest diffusivity, for 1 mol % of DOPE-PEG(2000). For this concentration and type of lipopolymer, the resulting bilayer is also homogeneous, as shown in Figure 3.7. The decrease of the diffusion coefficient with the amount of lipopolymer indicates that the PEGylated lipids are pinned to the surface and in this way hinder the mobility of the other lipids.

We emphasize that the mobility of supported lipid bilayers in presence of polymers is dependent on many factors and one may not extend our results to other types of polymers, lipid bilayers or physiological environments.²²¹ The complex interplay between polymers and the chemical properties of the colloidal surface can lead to surprising results. For example, and in contrast to what we reported above, we found that a homogeneous bilayer on cubic silica particles could only be obtained by using both PEGylated lipids (DOPE-PEG(5000)) and a negatively charged lipid (GM1). Interestingly, at high concentrations of PEGylated lipids, the bilayer is very homogeneous but not mobile (Figure 3.6h). This is in contrast to silica spheres coated with the same concentrations of lipopolymers and only zwitterionic lipids, which do not possess a homogeneous bilayer, see Figure 3.6a. We indicated this state in which the bilayer is homogeneous, but not fluid, with blue squares in Figure 3.6h. A possible origin of this unusual behavior could be the different porosity, surface chemistry and charge of the silica cubes²¹¹ compared to the silica spheres (Table 3.1).

3.3.2 Stabilizing CSLBs against nonspecific aggregation

To build specific colloidal structures from the bottom up, careful control over the interactions between the particles is required. On the one hand, specific attractive interactions may be employed to control which particles interact. This specific binding can be achieved by using dsDNA linkers with complementary sticky ends.^{74,85,110} On the other hand, the particles need to be prevented from binding to each other nonspecifically: that is, not via dsDNA linker interactions but via other attractive forces that act indiscriminately between all particles, such as Van der Waals forces. In other words, it is crucial to be able to control the colloidal stability of the CSLBs.⁴⁹

In our experiments, stabilization by repulsive electrostatic interactions is not a feasible approach. Namely, surface charges are screened by the counterions in the HEPES buffer, which is necessary to allow the complementary DNA sticky ends to bind.⁷⁴ The ionic strength of the buffer must be higher than at least 50 mM for clusters to form via DNA-mediated attractions.²²³ At these salt concentrations, even the bare silica particles are no longer stabilized by their negatively charged surface groups. Indeed, we found that both the bare silica particles and the silica particles coated with a lipid bilayer aggregated in all buffers, as was previously observed.²²⁴ The fraction of single particles determined from light microscopy images was $f_{\text{single}} = 0.67 \pm 0.10$ for uncoated silica particles after one hour of mixing in the buffer, while they were previously stable in deionized water. We therefore explored different ways to sterically stabilize the particles using higher concentrations of PEGylated lipids, SDS and inert dsDNA strands.

Stabilization using SDS

SDS is a surfactant with amphiphilic properties, consisting of a polar headgroup and a hydrocarbon tail, that has been shown to stabilize emulsion droplets coated with lipid monolayers.⁵⁶ Inspired by these findings, we added SDS to the CSLBs after bilayer coating to increase their stability. However, in contrast to lipid coated emulsion droplets we found no significant increase in stability when we varied the SDS concentration between 0 mM to 1 mM. In fact, the highest concentration of 1 mM led to a decrease in particle stability from $f_{\text{single}} = 0.67$ without SDS to $f_{\text{single}} = 0.45$ at 1 mM. This is likely caused by the disruptive effect that SDS can have on lipid bilayers. In a study²²⁵ on large unilamellar vesicles (LUVs) made from POPC, it was found that SDS can completely solubilize the vesicles above concentrations of 2 mM. While this concentration is higher than the concentrations that we used here, we already observed some damage to the bilayer. The resulting inhomogeneous coating may allow nonspecific “sticking” on patches that are not covered with a lipid bilayer and this leads to a subsequent decrease in overall colloidal stability.

Stabilization using PEGylated lipids

In contrast to SDS, PEGylated lipids can provide colloidal stability through steric repulsion between the PEG moieties while also being easily integrated into the bilayer through their lipid tails.^{213–215} To test their use for colloidal stabilization, we coated the particles with SUVs that contain a small fraction of the following PEGylated lipids: DOPE-PEG(2000), DOPE-PEG(3000) and DOPE-PEG(5000). Since we include these lipopolymers during SUV preparation, they are part of both the inner and outer leaflet, as depicted in Figure 3.2.1. At low concentrations, we observed no significant change in the stability of the particles upon an increase in the concentration of PEGylated lipids. For example, for DOPE-PEG(2000) stability remained constant below 5 mol % as shown in Figure 3.8a. For concentrations between 1 mol % and 7 mol % for DOPE-PEG(2000), 1 mol % and 6.8 mol % for DOPE-PEG(3000) and 2 mol % and 2.7 mol % for DOPE-PEG(5000), the average fraction of unclustered particles lay between $f_{\text{single}} = 0.5$ and $f_{\text{single}} = 0.77$, with no clear trend observed for different polymer lengths or concentrations. For all measurements, we verified that the spreading of the SUVs was successful. We believe that the stability of the particles did not improve significantly because at these concentrations, the grafted PEG was in the mushroom state instead of the brush state, and therefore not sufficient to provide steric stability.^{226,227} Therefore, we increased the concentration of DOPE-PEG(2000) above 7 mol %. Indeed, as shown in Figure 3.8, the colloidal stability increases above this concentration, likely due to a transition from the mushroom to the brush state, as was shown²²⁸ for similar lipopolymers (DSPE-PEG(2000)) around 8 mol %.

While the colloidal stability can be improved by increasing the concentration of PEGylated lipids, the bilayer is not fluid at the required concentrations, which can be seen by comparing Figure 3.8a to Figure 3.6b. Therefore, embedded DNA linkers will also not be mobile in the bilayer and it is not possible to form reconfigurable structures from CSLBs stabilized by PEGylated lipids only.

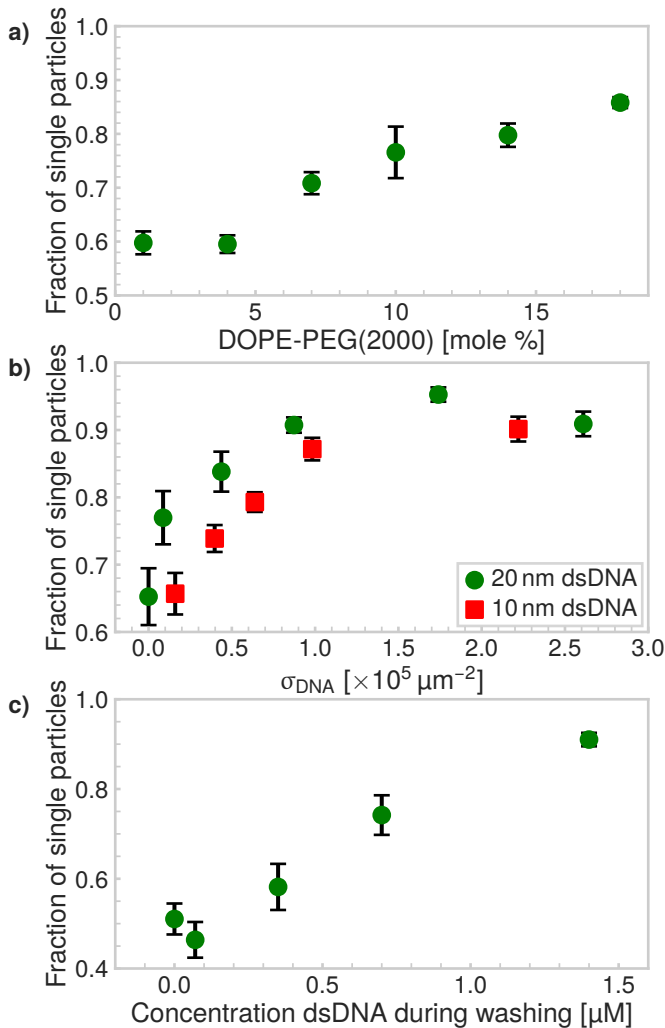


Figure 3.8: **Steric stabilization of CSLBs.** **a)** Higher concentrations of DOPE-PEG(2000) lead to a higher fraction of single particles in the absence of linker DNA. Stability is shown after one washing cycle of 2 min at 43 rcf and overnight rotation. We hypothesize that above 8 mol %, the packing density of PEG on the surface of the membrane is high enough for the PEG to be in the brush state, making it more effective as a steric stabilizer. **b)** Increasing the number of dsDNA strands on the particle surface increases the particle's stability for two different lengths of inert dsDNA (10 nm and 20 nm). **c)** Centrifugation and redispersion with a solution containing dsDNA affects the fraction of single particles. After centrifuging particles that were initially stable ($f_{\text{single}} = 0.95$, $\sigma_{\text{DNA}} = 1.7 \times 10^5 \mu\text{m}^{-2}$ dsDNA) $3\times$ at 43 rcf for 2 min, we observed nonspecific aggregation ($f_{\text{single}} = 0.51$) in the absence of dsDNA strands in solution while increasing the concentration of dsDNA (20 nm) in the washing solution could preserve stability.

Stabilization using inert dsDNA

Since PEGylated lipids cannot be used to provide steric stability, because they reduce the fluidity of the membrane, we explored an alternative route to stabilize the CSLBs. Inspired by numerical findings that inert double stranded DNA (dsDNA) can also act as a steric stabilizer via excluded volume interactions between DNA strands on different particles,²²⁹ we employed dsDNA strands with a double-cholesterol anchor at one end, in order to functionalize the CSLBs with these DNA linkers via hydrophobic insertion of the cholesterol into the bilayer,¹¹¹ as schematically depicted in Figure 3.2.2.

We varied the surface concentration σ_{DNA} (as defined in Equation 3.1) of two inert dsDNA strands with different lengths and measured its effect on the particle stability, which is shown in Figure 3.8b. The stability was determined after the particles were coated with dsDNA and rotated for one hour. For both the 10 nm dsDNA and the 20 nm dsDNA, we found that increasing the number of grafted dsDNA strands per particle led to an increase in particle stability from $f_{\text{single}} = 0.68$ without dsDNA to $f_{\text{single}} = 0.90$ to 0.95 above $\sigma_{\text{DNA}} = 2 \times 10^5 \mu\text{m}^{-2}$. We found that the 20 nm dsDNA is slightly more efficient as a steric stabilizer than the 10 nm dsDNA, as can be seen in Figure 3.8b. This is expected, because for the longer DNA, excluded volume interactions between particles start to become important already at larger particle separations than for the shorter DNA. Additionally, excluded volume interactions between DNA strands on the same particle force the DNA to extend outwards already at lower concentrations for the longer DNA strands as compared to the shorter DNA strands. Therefore, the repulsion between the particles also has a longer range, leading to better colloidal stability. However, at concentrations above $\sigma_{\text{DNA}} = 2 \times 10^5 \mu\text{m}^{-2}$, the difference between the 10 nm and 20 nm dsDNA is less pronounced, because the particles are so densely coated that adding longer or more DNA strands will not stabilize the particles any further.

To use these particles in self-assembly studies, specific interactions need to be present as well, which we here induce by adding dsDNA *linkers*, that is, dsDNA strands with a sticky end and double cholesterol anchors. After the particles are functionalized, any excess linker DNA left in the solvent needs to be removed to reduce unwanted aggregation or saturation of the complementary functionalized particles. To remove excess linker DNA, we washed and redispersed the particles in buffer solution three times and measured the particle stability afterwards. Unexpectedly, it decreased from $f_{\text{single}} = 0.95$ before washing to $f_{\text{single}} = 0.51$ after washing. To detect whether the partial removal of the stabilizing inert dsDNA during washing had caused this aggregation, we washed the particles in a HEPES buffer that contained various concentrations of inert dsDNA. As shown in Figure 3.8c, increasing the concentration of dsDNA in the washing solution led to an increase in particle stability after washing, therefore confirming our hypothesis. Including $1.4 \mu\text{M}$ of inert DNA in the washing solution allowed us to preserve the particle stability ($f_{\text{single}} = 0.91$).

However, washing the particles with such high concentrations of dsDNA proved

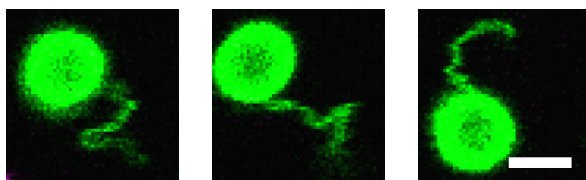


Figure 3.9: **Formation of membrane tubes** at high DNA coating concentrations, shown for three different particles. The scale bar is $2\ \mu\text{m}$. The tube lengths are comparable to the particle size ($2\ \mu\text{m}$) and the tubes are very floppy. Note that the brightness was increased to show the tubes and as a result the particles are oversaturated.

detrimental to the bilayer and led to the formation of membrane tubes between $1\ \mu\text{m}$ to $3\ \mu\text{m}$ long (see Figure 3.9). These membrane tubes are highly curved surfaces that are only formed under specific conditions, for example a difference in spontaneous curvature between the inner and the outer membrane leaflets.²³⁰ In the present case, since dsDNA is only added after the formation of the bilayer, it is consequently only present in the outer leaflet and hence induces a difference in spontaneous curvature, which in turn causes the formation of tubes. If the DNA would be present on both leaflets, no tube formation is expected. We tested this by mixing the dsDNA with the SUVs before coating the particles, but found no fluorescence signal on the particles' surface, implying the absence of a bilayer coating. We believe that the dsDNA sterically stabilizes the SUVs and prevents spreading and fusion of SUVs on the particle surface.

To summarize, we found that inert double-stranded DNA can impart colloidal stability to the CSLBs. The asymmetric distribution of the DNA constructs over the membrane leaflets causes the formation of membrane tubes at high coating concentrations above approximately $1 \times 10^5\ \mu\text{m}^{-2}$, but this is currently unavoidable if colloidal stability needs to be preserved during repeated washing cycles.

3.3.3 Linker functionalization for self-assembly

To be able to employ CSLBs in self-assembly experiments, we induce specific attractive interactions by using two sets of dsDNA linkers with complementary single-stranded sticky ends that can form bonds via hybridization. We use two hydrophobic anchors (either cholesterol or stearyl) per dsDNA complex to insert the dsDNA linker into the outer leaflet (see Figure 3.2.2), while at the same time adding inert dsDNA strands for steric stabilization. We use double hydrophobic anchors because dsDNA with a single hydrophobic anchor is less strongly confined to the bilayer.¹¹¹ The dsDNA is attached to the double hydrophobic anchor with a tetraethylene glycol (TEG) or hexaethylene glycol (HEG) spacer to allow it to swivel with respect to the anchor. We label the dsDNA linkers with a fluorescent dye to image them using confocal microscopy. Table A.1 contains more details on the DNA strands that we have used here.

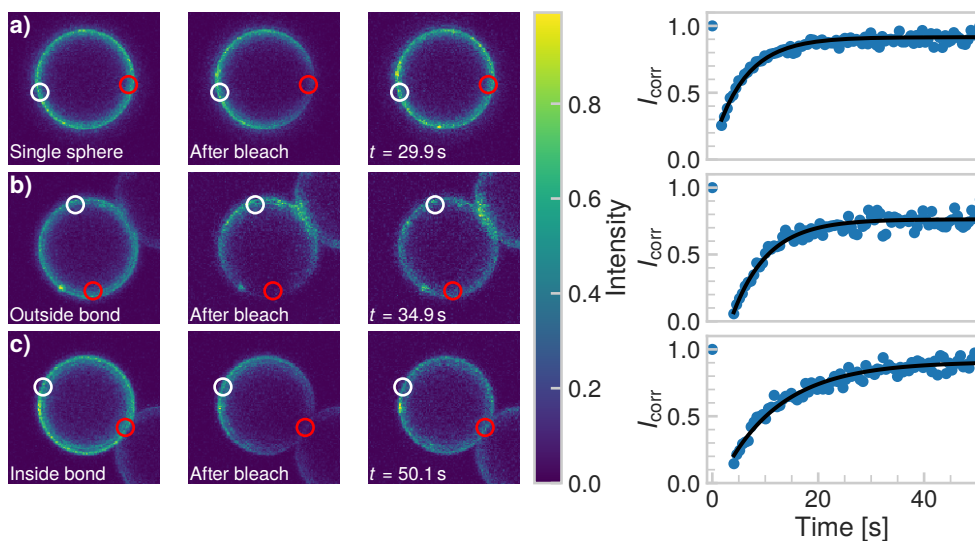


Figure 3.10: **DNA linker mobility on CSLBs.** Three representative FRAP experiments are shown that probe the mobility of DNA linkers on the surface of a $7\ \mu\text{m}$ CSLB. In the intensity plots, a red circle indicates the bleached area and a white circle shows the reference area. For all experiments, the DNA linkers are mobile. **a)** FRAP on a single sphere. We measured an average recovery time of $(8 \pm 2)\ \text{s}$ (16 different particles). **b)** FRAP on a sphere in a cluster, taken outside the bond area. We measured an average recovery time of $(6 \pm 2)\ \text{s}$ (15 different clusters). Within the error, this is the same as the recovery time of single particles in panel a. **c)** FRAP on a sphere in a cluster, inside the bond area. We measured recovery times of 5 s to 62 s with an average recovery time of $(17 \pm 16)\ \text{s}$ (12 different clusters). This is longer than the recovery times we measured outside the bond area in panels a and b, which indicates that the diffusion is slower in the bond area. However, the spread in recovery times was also larger for bleached areas inside the bond area.

Previous experiments⁸⁵ have shown that several interesting structures, such as flexible colloidal polymers and molecules, can be obtained via self-assembly of CSLBs. In order to form these reconfigurable structures, not only the lipids in the bilayer should be mobile but also the grafted linker DNA should be mobile on the surface of the membrane. We can quantify the mobility of dsDNA on the surface of the bilayer by measuring the FRAP of fluorescently-labeled DNA. Note that for these experiments we did not employ fluorescent lipids. For a successful recovery after bleaching of the DNA linkers in the binding patch between two particles, two requirements need to be fulfilled: the DNA linkers outside of the binding patch have to be mobile and the bleached linkers inside the binding patch have to be able to unbind, to allow unbleached linkers to diffuse into the binding patch. We have calculated the melting temperature of the sticky end using an approximate formula²³¹ and find a melting

temperature $T_m = 30.4\text{ }^\circ\text{C}$, meaning that at $25\text{ }^\circ\text{C}$ the probability for the sticky end to form a duplex is $P(25\text{ }^\circ\text{C}) = 0.68$ based on melting temperature considerations only. Therefore, the sticky ends continuously bind and unbind in our experiments, making fluorescence recovery possible, while the sheer number of linkers in the patch area keeps the particles always bound.

We confirmed the mobility of linker DNA on the particle surface using FRAP experiments, shown in Figure 3.10. Note that the whole cluster is immobilized on the (non-passivated) glass coverslip to enable FRAP on these micrometer-sized particles. Therefore these clusters do not show translational diffusion or cluster flexibility. In Figure 3.10a, a representative FRAP experiment on a single sphere is shown. We measured an average recovery time of (8 ± 2) s from independent measurements on 16 different particles. Outside the bond area (Figure 3.10b), we measured an average recovery time of (6 ± 2) s from independent measurements on 15 different clusters. Within the error, the diffusion of DNA outside of the bond area is the same as on free particles, as expected. Inside the bond area (Figure 3.10c), we measured recovery times of 5 s to 62 s with an average recovery time of (17 ± 16) s from independent measurements on 12 different clusters. This is longer than the recovery times we measured outside the bond area and on single particles, which indicates the diffusion is slower in the bond area. However, the recovery time inside the bond area varied greatly between different clusters, indicating that diffusion rates into and out of the bond area can vary between different particles. A likely cause is the spread in the DNA concentration between individual particles in a batch. Higher DNA concentrations imply a higher concentration of bonded linkers in the bond area. This will sterically hinder the diffusion of unbonded linkers inside the patch area and will thus lead to longer recovery times. Furthermore, we hypothesize that the linker concentration in the patch area slowly increases as a function of time after binding, so that the recovery time depends on the time that has elapsed after the formation of the cluster, which we did not control. In summary, we have shown here that the dsDNA linkers are mobile on each part of the (un)bound particle, which is a prerequisite for creating flexibly linked clusters.

3.3.4 Mobility of self-assembled structures

The mobility of individual dsDNA linkers on the surface does not necessarily imply that bonded clusters of DNA-functionalized CSLBs are also reconfigurable. For example, for emulsion droplets functionalized with DNA linkers, the large linker patch that is formed between particles can slow down the motion when the supporting fluid is inhomogeneous²¹⁶ and colloidal joints lose their flexibility with an increasing concentration of dsDNA linkers in the bond area.⁸⁵

To measure the flexibility of larger structures, we assembled CSLBs with complementary dsDNA linkers and imaged chains of three CSLBs, so called trimers, over time. We extracted the position of the individual particles and the opening angle θ (see inset Figure 3.11a) for all frames and calculated the mean squared angular displacement (MSAD) to characterize the flexibility.⁸⁵ To investigate the influence of

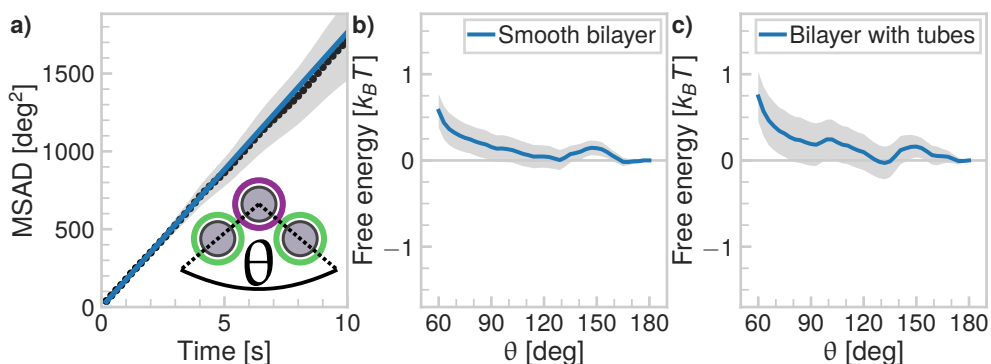


Figure 3.11: Mobility of self-assembled trimers. **a)** Mean squared angular displacement (MSAD) of the opening angle θ for a mobile trimer. The MSAD is linear and we find a joint flexibility $J = (176 \pm 12) \text{ deg}^2/\text{s}$ ($J = (184 \pm 101) \text{ deg}^2/\text{s}$ when averaging over all experiments). **b, c)** Free energy as function of opening angle θ for particles with **b)** smooth bilayers and **c)** bilayers that have membrane tubes. The grey shaded area marks one standard deviation confidence interval. We analyzed 53 clusters with smooth bilayers and 18 clusters with membrane tubes. In both cases, we find no preference for specific opening angles within the experimental error, meaning that the particles are freely-jointed. Note that the slight repulsion at small angles is caused by boundary effects inherent to our analysis method.

the membrane homogeneity on the structural flexibility, we compared trimers assembled from CSLBs with homogeneous, fluid bilayers to trimers with bilayers that had spontaneously formed membrane tubes. In the following, we will only show the free energy landscape for θ from 60 deg to 180 deg due to the symmetry of a trimer.

For trimers made from CSLBs with smooth lipid bilayers, we found that the particles ($R = 1.06 \mu\text{m}$) move with respect to each other over the full angular range. We analyzed the opening angle θ for 53 different clusters by tracking the individual particles and calculating θ for all frames (see inset Figure 3.11a). The average value of the flexibility of the trimers is $J = (184 \pm 101) \text{ deg}^2/\text{s}$ (or $(0.03 \pm 0.02) \mu\text{m}^2 \text{ s}^{-1}$) and agrees well with previous experiments.⁸⁵ The spread in the flexibility that we observe is likely caused by the spread in dsDNA linker density on the particles. We then determined the free energy using the maximum-likelihood estimation of angular displacements method (see Section 3.2.7), as shown in Figure 3.11b. We found no preference in the opening angle that is significant with respect to the thermal energy $k_B T$, indicating that the surface is smooth enough to allow the particles to move over one another without restrictions. We observed a boundary effect inherent to the analysis for angles smaller than $60 \text{ deg} + \sqrt{2J\tau} \approx 69 \text{ deg}$ (where J is the joint flexibility) leading to a slight overestimation of the free energy for those angles. In previous experiments, we observed a small preference, namely a $0.9 k_B T$ difference in the free energy, for opening angles around 140 deg.⁸⁵ We do not find the same

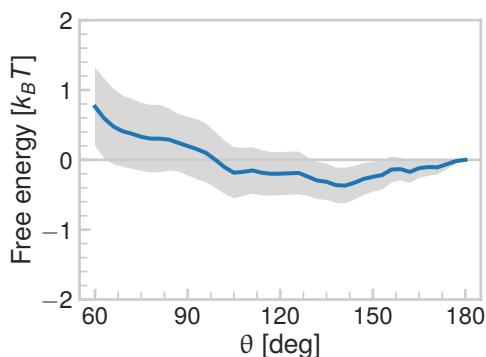


Figure 3.12: **Previous results reanalyzed using a maximum-likelihood method.** In Chakraborty et al.,⁸⁵ we measured a preferred angle of 140 deg with a magnitude of roughly $0.9 k_B T$. When we analyze this data using the angular displacement method outlined in this work, we see that the observed preference is within the experimental error, as indicated by the shaded gray area.

preference in angle for the experiments presented here. When reanalyzing the data from Chakraborty et al.⁸⁵ using our maximum-likelihood method, we noted that the observed free energy difference is within the experimental error (see Figure 3.12) and therefore we conclude that there is no preference in opening angle. This is also in line with recent experiments on flexibly linked emulsion droplets, which are freely-jointed like the CSLBs we present here.¹⁹⁴

To test the robustness of this structural flexibility in the presence of membrane inhomogeneities, we prepared particles with a large number of membrane tubes by washing with inert dsDNA. As shown in Figure 3.11c, this did not alter the flexibility of the clusters: they still explore the full angular range and do not show a significant preferred opening angle, similar to the particles coated with a smooth membrane. Surprisingly, this means that particles stabilized by dsDNA can in principle be used for self-assembly studies, despite the fact that the high concentration of dsDNA causes membrane tubes to form, because the tubes do not significantly alter the relative motion of bonded particles.

3.4 Summary and Conclusions

We investigated various factors in the preparation protocol of colloid-supported lipid bilayers (CSLBs) in view of their emerging use in self-assembly and model membrane studies. Specifically, we focused on realizing a homogeneous and fluid bilayer, while achieving colloidal stability and functionalization with DNA linkers at the same time.

Similar to what has been reported for flat supported lipid bilayers, we found that the quality of the lipid bilayer on colloidal particles critically depends on the material of the particle's surface. The bilayer was not fluid on particles made from polystyrene (with or without carboxyl groups), hematite and TPM particles (with or without carboxyl or amino groups). Colloids featuring a silica surface, on the other hand, were able to host a fluid and homogeneous bilayer, at least in the absence of any polymer residues from the synthesis. We furthermore observed that the variation in the substrate curvature does not affect the bilayer formation if it is sufficiently gentle, while excessive surface roughness can hinder the spreading and fusion of SUVs.

Use of PEGylated lipids in the bilayer increased the colloidal stability, but affected

the bilayer homogeneity and mobility negatively. Addition of the amphiphilic surfactant SDS led to a disintegration of the bilayer. A better way to provide colloidal stability is by steric stabilization by excluded volume effects through the insertion of double-stranded inert DNA. Increasing the concentration of dsDNA leads to an increase in colloidal stability.

Finally, we demonstrated that these CSLBs can be functionalized with surface-mobile DNA linkers and assembled them into flexible structures of freely-jointed particles. We found that local bilayer inhomogeneities in the form of membrane tubes do not affect the free energy landscape of the connected particles.

CSLBs with fluid, homogeneous membranes and surface-mobile binding groups have great promise in a wide range of applications and fundamental studies. The fact that the bonded particles can flexibly move with respect to each other opens the door to overcoming equilibration issues, as previously encountered in hit-and-stick processes.¹⁹⁶ Moreover, it allows for the assembly of structures with internal deformation modes. This enables the study of the impact of structural flexibility on the phase behavior, such as the formation of crystals with new lattices or properties^{57,58,119,120} and the experimental realization of information elements for wet computing.¹⁹⁵ CSLBs with increased membrane fluidity also mimic biological membranes much more closely, which may be advantageous for model membrane and cell biology studies,^{61–65} smart drug delivery^{9,116,117} and bio-sensing applications.^{15,118}

Acknowledgments

This chapter is based on the following publication:

Colloid-supported lipid bilayers for self-assembly.

M. Rinaldin*, R.W. Verweij*, I. Chakraborty, and D.J. Kraft

Soft Matter, 15, 1345-1360 (2019). doi:10.1039/C8SM01661E

We thank Rachel Doherty and Vera Meester for help with the colloidal syntheses and electron microscopy imaging. We are grateful to Piermarco Fonda and Luca Giomi for useful discussions. This work was supported by the Netherlands Organization for Scientific Research (NWO/OCW), as part of the Frontiers of Nanoscience program and VENI grant 680-47-431. This project has received funding from the European Research Council (ERC) under the European Union's Horizon 2020 research and innovation program (grant agreement no. 758383).

*These authors contributed equally.

