



Universiteit  
Leiden  
The Netherlands

## **Innovation in neurosurgery: Evaluation of neurosurgical innovation, related ethics, and solutions**

Muskens, I.S.

### **Citation**

Muskens, I. S. (2021, April 1). *Innovation in neurosurgery: Evaluation of neurosurgical innovation, related ethics, and solutions*. Retrieved from <https://hdl.handle.net/1887/3151773>

Version: Publisher's Version

License: [Licence agreement concerning inclusion of doctoral thesis in the Institutional Repository of the University of Leiden](#)

Downloaded from: <https://hdl.handle.net/1887/3151773>

**Note:** To cite this publication please use the final published version (if applicable).

Cover Page



Universiteit Leiden



The handle <http://hdl.handle.net/1887/3151773> holds various files of this Leiden University dissertation.

**Author:** Muskens, I.S.

**Title:** Innovation in neurosurgery: Evaluation of neurosurgical innovation, related ethics, and solutions

**Issue date:** 2021-04-01

# 3

## The endoscopic endonasal approach is not superior to the microscopic transcranial approach for anterior skull base meningiomas

**Ivo S. Muskens MD, Vanessa Briceno MSc, Tom L. Ouwehand MD, William B. Gormley MD MPH MBA, Linda S. Aglio MD MS, Amir H. Zamanipoor Najafabadi BSc, Wouter R. van Furth MD PhD, Timothy R. Smith MD PhD MPH, Rania. A Mekary MSc PhD, Marike L.D. Broekman MD PhD JD**

**Introduction:** In the past decade, the endonasal transsphenoidal approach (eTSA) has become an alternative to the microsurgical transcranial approach (mTCA) for tuberculum sellae meningiomas (TSMs) and olfactory groove meningiomas (OGMs). The aim of this meta-analysis was to evaluate which approach offered the best surgical outcomes. **Methods:** A systematic review of the literature from 2004 and meta-analysis were conducted in accordance with the PRISMA guidelines. Pooled incidence was calculated for gross total resection (GTR), visual improvement, cerebrospinal fluid (CSF) leak, intraoperative arterial injury, and mortality, comparing eTSA and mTCA, with *p*-interaction values. **Results:** Out of 1684 studies, 64 case series were included in the meta-analysis. Using the fixed-effects model, GTR rate was significantly higher among mTCA patients for OGM (eTSA:

Parts of this chapter have been published in *Acta Neurochirurgica* 160: 59-75 (2018)

70.9% vs. mTCA: 88.5%,  $p$ -interaction < 0.01), but not significantly higher for TSM (eTSA: 83.0% vs. mTCA: 85.8%,  $p$ -interaction=0.34). Despite considerable heterogeneity, visual improvement was higher for eTSA than mTCA for TSM ( $p$ -interaction < 0.01), but not for OGM ( $p$ -interaction=0.33). CSF leak was significantly higher among eTSA patients for both OGM (eTSA: 25.1% vs. mTCA: 10.5%,  $p$ -interaction < 0.01) and TSM (eTSA: 19.3%, vs. mTCA: 5.81%,  $p$ -interaction < 0.01). Intraoperative arterial injury was higher among eTSA (4.89%) than mTCA patients (1.86%) for TSM ( $p$ -interaction=0.03), but not for OGM resection ( $p$ -interaction=0.10). Mortality was not significantly different between eTSA and mTCA patients for both TSM ( $p$ -interaction=0.14) and OGM resection ( $p$ -interaction=0.88). Random-effect models yielded similar results. **Conclusions:** In this meta-analysis, eTSA was not shown to be superior to mTCA for resection of both OGMs and TSMs.

## Introduction

The mainstay of treatment for tuberculum sellae meningiomas (TSMs) and olfactory groove meningiomas (OGMs) is surgery. Goals of surgery include obtaining tissue for histopathological diagnosis and relieving pressure caused by the tumor on neighboring structures such as the olfactory nerves, anterior cerebral arteries, optic nerves, and the pituitary gland. At the same time, these structures are very susceptible to manipulation and damage to these structures can lead to great morbidity<sup>51</sup>

Traditionally, TSMs and OGMs are resected using a microscopic transcranial approach (mTCA). Various approaches have been described, including interhemispheric, pterional, bifrontal, and subfrontal mTCA<sup>1, 2, 5-7, 9, 47, 51, 56, 64, 70</sup>. In the last decade, however, as a result of the evolution of endoscopic surgery for pituitary adenomas, these meningiomas have been increasingly resected using an endonasal endoscopic transsphenoidal approach (eTSA), as first described by Jho et al. in 2004<sup>38</sup>. Although the endoscopic approach is generally viewed as less invasive, with some studies suggesting that eTSA caused fewer post-operative changes on magnetic resonance imaging (MRI) compared to mTCA possibly indicating less manipulation,<sup>22</sup> it has been suggested that eTSA results in higher rates of CSF leaks, and potentially different outcomes (e.g. less GTR)<sup>18, 42</sup>. However, a direct comparison between eTSA and mTCA is currently lacking. Therefore, the aim of this systematic review and meta-analysis was to evaluate which approach (eTSA vs. mTCA) offers the best surgical outcomes.

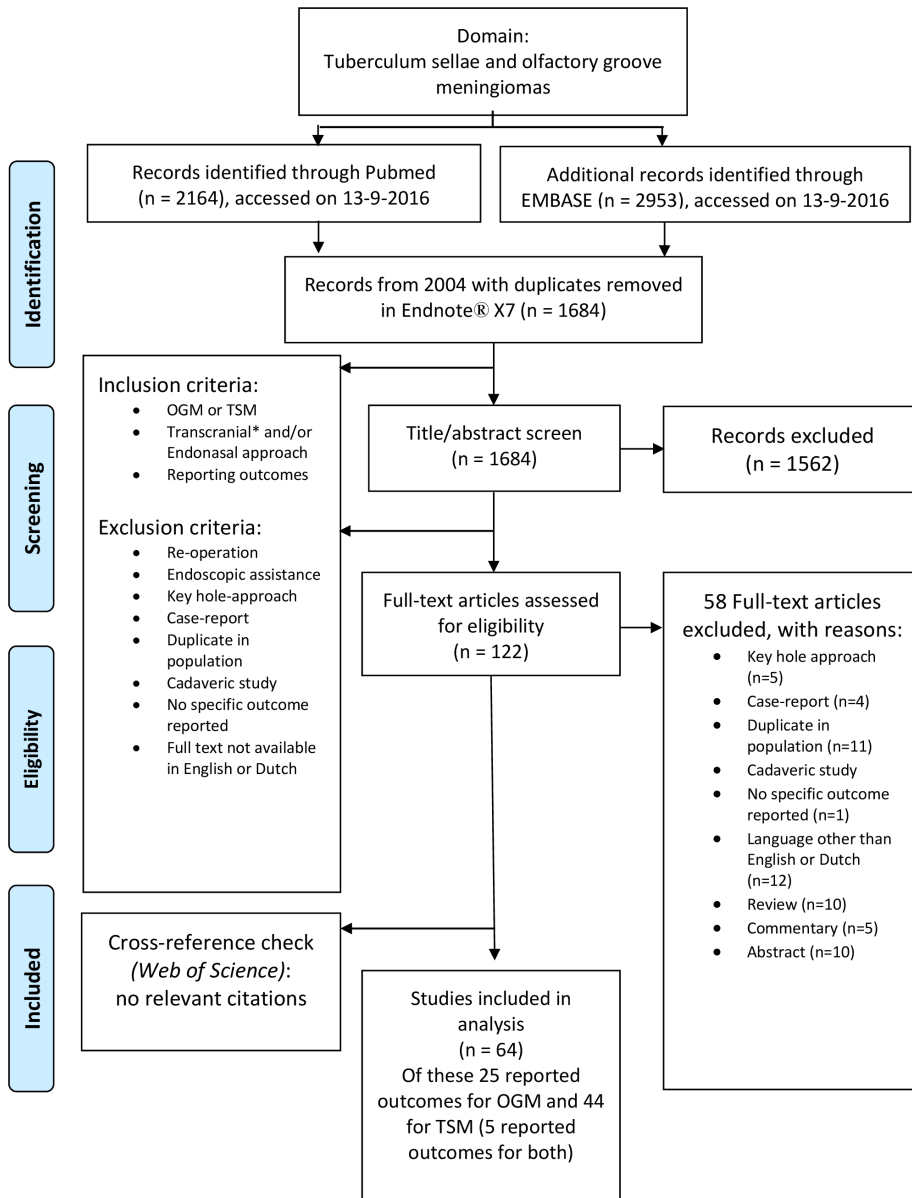
## Methods

### Search strategy and paper selection

In order to identify studies reporting on outcomes of surgically-treated TSMs and OGMs, a systematic review of the literature was conducted in accordance with the Preferred Reporting Items for Systematic Reviews and Meta-Analyses (PRISMA) Statement<sup>54</sup>. Both PubMed and Embase databases were searched on September 12, 2016. Because the outcomes of endoscopic surgery were first described in 2004 and microscopic resection has seen a continuous improvement, only articles published in 2004 or later were included<sup>26, 38</sup>. The search strategy was drawn up using the keywords "Meningioma", "Tuberculum Sellae", "Olfactory Groove" and synonyms

(Supplementary Table 3.5). Duplicates were removed using Endnote X7.5.

Figure 3.1: Flowchart



Legend: Abbreviations: OGM: olfactory groove meningioma, TSM: tuberculum sellae meningioma

Table 3.1: Study characteristics of tuberculum sellae meningioma (TSM) studies

Authors	TSM (N)	Mean age (range)	Meningioma Grade: WHO/WHO (N)	% Male	Meningioma size	Approach	Mean Follow-up (years)	Modified NOS*
<i>Ali et al.<sup>3</sup></i>	30	48 (34-63)	0 & 0	43	NR	mTCA	2.5 (range: 0.5 – 4)	3
<i>Bassiani et al.<sup>5</sup></i>	62	53 (29-81)	NS	26	NR	mTCA	6 (range: 1.5 – 14)	3
<i>Bohman et al.<sup>9</sup></i>	5	53 (24-77)	NS	40	Mean DM: 4.74 cm	eTSA	0.65 (range: 0.18 – 1.42)	4
<i>Bowers et al.<sup>11</sup></i>	27	54 (23-77)	NS	18.5	NR	mTCA + eTSA	NR	3
<i>Ceylan et al.<sup>12</sup></i>	23	52.9 (23-77)	NS	18.5	Mean DM 2.55 cm	eTSA	1.82 (range: 0.17 – 2.42)	3
<i>Chen et al.<sup>13</sup></i>	49	49.8 (4-78)	NS	33	NR	mTCA	2.44 (range: 0.5 – 4.04)	4
<i>Chohby et al.<sup>15</sup></i>	34	55.7 (23-78)	0 & 0	15	Mean DM: 2.43 cm	mTCA	7.98 (range: 1.25 – 16.2)	3
<i>Choudhury et al.<sup>16</sup></i>	6	39.5 (29-52)	NS	33	Mean DM: 3.5 cm	eTSA	0.58 (range: 0.16 – 1)	4
<i>cook et al.<sup>20</sup></i>	3	40.3 (32-55)	NS	0	NR	eTSA	NR	3
<i>Carrey et al.<sup>21</sup></i>	20	59.1 (SD: 11.1)	0 & 0	15	Mean DM: 3.25 (SD: 1.38 cm)	mTCA	4.69 (SD: 2.83)	4
<i>De Dvinitis et al.<sup>25</sup></i>	51	NS	NS	20	DM: 6; < 2cm, 33; 2-4cm, 5; >4 cm	mTCA + eTSA	Range: 0.75 – 21	4
<i>Della puppa et al.<sup>26</sup></i>	23	NS	NS	0	NR	mTCA	3.42 (range: 0.225 – 6.42)	3
<i>Fatemi et al.<sup>29</sup></i>	23	40 (SD: 22)	NS	30	Mean DM: 3.08 cm	mTCA + eTSA	eTSA: 1.67 (range: 0.25 – 5), mTCA: 1.17 (range: 0.92 – 1.5)	4
<i>Gadgil et al.<sup>30</sup></i>	5	51 (31-66)	0 & 0	40	Mean volume: 6.3 cm <sup>3</sup>	eTSA	1.25 (range: 0.25 – 2.25)	4
<i>Ganna et al.<sup>32</sup></i>	24	53.8 (33-80)	0 & 0	17	Mean DM: 2.63 cm	mTCA	4.33 (range: 1.5 – 7.67)	3
<i>Goel et al.<sup>34</sup></i>	85	NS	NS	NS	NR	mTCA	4 (range: 0.5 – 9)	4
<i>Hayhurst et al.<sup>35</sup></i>	9	48.7 (29-65)	0 & 0	42	NR	eTSA	Median follow-up 38.6 (range 12 – 60 months)	4
<i>Jang et al.<sup>35</sup></i>	24	49.5 (25-70)	NS	21	Mean DM: 2.06 cm	mTCA	1.73 (range: 0.25 – 4.5)	3
<i>Khan et al.<sup>40</sup></i>	20	56.5 (31-81)	0 & 0	30	Mean volume: 11.98 cm <sup>3</sup>	eTSA	NS	3
<i>Kitano et al.<sup>41</sup></i>	28	Median: 55 (range: 42-76)	NS	14%	Mean volume: 8.1 mm <sup>3</sup> (range 0.7-31.4 mm <sup>3</sup> )	mTCA + eTSA	NS	3
<i>Koutourousiou et al.<sup>48</sup></i>	70	57.3 (36-88)	0 & 0	16	Mean DM: 2.3 cm	eTSA	2.42 (range: 0.083 – 8.17)	3
<i>Landeiro et al.<sup>45</sup></i>	23	56.2 (38-77)	NS	35	NR	mTCA	2.6 (range: 0.5 – 10.3)	3
<i>Leveque et al.<sup>47</sup></i>	18	63.8 (31-88)	NS	NS	DM <4.0 cm: 11; >4.0 cm: 7	mTCA	4.74 (SD: 2.74)	4
<i>Li et al.<sup>48</sup></i>	43	53.8 (24-68)	NS	28	DM: <2 cm: 8, 2-4 cm: 22, >4 cm: 13	mTCA	5.4 (range: 2 – 10)	3
<i>Li-Hua et al.<sup>49</sup></i>	67	48.7 (28-76)	NS	42	DM: <3 cm: 29, >3cm: 38	mTCA	2.44 (range: 0.5 – 4.04)	4
<i>Liu et al.<sup>50</sup></i>	19	NS	NS	NS	NR	mTCA	1.24 (range: 0.33 – 3.83)	4
<i>Mahmoud et al.<sup>51</sup></i>	58	56 (13-80)	NS	31	Mean DM: 2.9	mTCA	1.92 (up to 12 years)	4
<i>Margalit et al.<sup>52</sup></i>	51	57.1 (28-83)	NS	32	Mean max DM 2.94 cm (SD: 1.07)	mTCA	3.51 (range 0.17 – 7)	3
<i>Mathiesen et al.<sup>53</sup></i>	29	58.3 (30-84)	0 & 0	21	Mean max DM: 23.9 cm	mTCA	6 (1.5 – 10)	4
<i>Nakamura et al.<sup>56</sup></i>	72	54.3 (30-86)	1 & 0	24	Mean max 2.5 cm	mTCA	3.8 (range: 0.33 – 19.8)	3
<i>Nanda et al.<sup>58</sup></i>	24	NS	NS	NS	DM: <3 cm: 3, 3-5 cm: 6, >5 cm: 21	mTCA	Median: 1.5	4
<i>Ogawa et al.<sup>61</sup></i>	29	58.9 (43-79)	2 & 0	26	NR	eTSA	2.98 (range: 0.5 – 4.92)	3
<i>Padhye et al.<sup>62</sup></i>	3	66 (65 – 66)	0 & 0	0	Mean volume 25.7 cm <sup>3</sup>	eTSA	1.83 (range: 0.25 – 6)	4

Abbreviations: WHO: World Health Organization, SD: Standard deviation, NR: Not Reported, DM: diameter, NS: not specified, mTCA: microscopic transsphenoidal approach, eTSA: endoscopic transsphenoidal approach, NOS: New-Castle Ottawa Scale.\*The modified NOS score varied between 3 and 4; the difference was mainly caused by variation in specifying completeness of follow-up.

Table 3.1: Study characteristics of tuberculoma sellae meningioma (TSM) studies (continued)

Author	41	42	43	44	45	46	47	48	49	50	51	52	53	54	55	56
Patani <i>et al.</i> <sup>63</sup>																
Panir <i>et al.</i> <sup>66</sup>			37													
Park <i>et al.</i> <sup>66</sup>	21	51	NS	NS	NS	NS	NS	NS	NS	NS	NS	NS	NS	NS	NS	NS
Refaat <i>et al.</i> <sup>68</sup>	16	NS	NS	NS	NS	NS	NS	NS	NS	NS	NS	NS	NS	NS	NS	NS
Romani <i>et al.</i> <sup>69</sup>	52	Median: 59 (14-87)	1 & 0	NS	NS	NS	NS	NS	NS	NS	NS	NS	NS	NS	NS	NS
Schick <i>et al.</i> <sup>72</sup>	53	52.6 (27-78)	NS	NS	NS	NS	NS	NS	NS	NS	NS	NS	NS	NS	NS	NS
Seol <i>et al.</i> <sup>73</sup>	86	49 (24-75)	NS	NS	NS	NS	NS	NS	NS	NS	NS	NS	NS	NS	NS	NS
Terasaka <i>et al.</i> <sup>77</sup>	9	64 (57-83)	0 & 0	0 & 0	0 & 0	0 & 0	0 & 0	0 & 0	0 & 0	0 & 0	0 & 0	0 & 0	0 & 0	0 & 0	0 & 0	0 & 0
Wang <i>et al.</i> <sup>79</sup>	12	56.7 (40-67)	0 & 0	0 & 0	0 & 0	0 & 0	0 & 0	0 & 0	0 & 0	0 & 0	0 & 0	0 & 0	0 & 0	0 & 0	0 & 0	0 & 0
Wilk <i>et al.</i> <sup>81</sup>	18	50.5 (30-73)	0 & 0	0 & 0	0 & 0	0 & 0	0 & 0	0 & 0	0 & 0	0 & 0	0 & 0	0 & 0	0 & 0	0 & 0	0 & 0	0 & 0
Zhou <i>et al.</i> <sup>82</sup>	56	42.5 (21-69)	NS	NS	NS	NS	NS	NS	NS	NS	NS	NS	NS	NS	NS	NS
NR	NR	NR	NR	NR	NR	NR	NR	NR	NR	NR	NR	NR	NR	NR	NR	NR
Range	7.5-21.0 mm <sup>3</sup>	3.13 (range: 0.25-16)	6.33 (range: 1-12.6)	1.17 (range: 0.67-1.5)	Median: 4.91 (range: 0.08-11.1)	2.49 (range: 0.5-9)	3.25 (range: 0.6-12.2)	2.1 (0.5-5.92)	2.1 (range: 0.5-5)	1.96 (range: 0.5-3.25)	2.29 (range: 0.08-3)					
mTCA	mTCA	mTCA	mTCA	mTCA	mTCA	mTCA	mTCA	eTSA	mTCA	mTCA	mTCA	mTCA	mTCA	mTCA	mTCA	mTCA

## Data extraction

Two authors (IM and TO) independently screened the titles and abstracts of the articles for papers reporting surgical outcomes of resected OGMs and TSMs. After full-text screening, articles that reported outcomes of surgically-treated OGMs and TSMs were included. Case reports, commentaries, congress abstracts, reviews, animal studies, studies describing an endoscopically-assisted approach, studies reporting on the use of a keyhole-approach, studies in pediatric patients (<18 years old), re-operations, and cadaveric studies were excluded. Only literature in English and Dutch was reviewed. Discrepancies in selection were sorted out by discussion, and a senior author (MB) was consulted if the discrepancy could not be solved by discussion.

The following study characteristics were extracted from the full text of the selected studies: study design, number of patients, follow-up duration, study geographic location, percentage of WHO II and III meningiomas, percentage of males in the study population, mean age of the study population, and surgery type (transcranial or endoscopic endonasal). The following outcomes were extracted: number of patients with GTR (defined as Simpson grade I or II), number of patients with pre-operative visual problems, number of patients with improved vision post-surgery, post-operative cerebrospinal fluid (CSF) leakage, number of intraoperative arterial injury, and all-cause mortality (within 30 days after resection). Furthermore, perioperative blood loss, hospital length of stay, and operation length were extracted. Study quality was assessed with the adjusted New-Castle Ottawa Scale (NOS)<sup>80</sup> If the study in question was a case series, comparability was ignored.

Table 3.2: Study characteristics of olfactory groove meningioma (OGM) studies

Authors	TSM (N)	Mean age (range)	Meningioma Grade: WHOII and WHOIII (N)	% Male	Meningioma size	Approach	Mean Follow-up (years)	Modified NOS*
<i>Ali et al.<sup>3</sup></i>	30	48 (34-63)	0 & 0	43	NR	mTCA	2.5 (range: 0.5 – 4)	3
<i>Bassioani et al.<sup>5</sup></i>	62	53 (29-81)	NS	26	NR	mTCA	6 (range: 1.5 – 14)	3
<i>Bohman et al.<sup>9</sup></i>	5	53 (24-77)	NS	40	Mean DM: 4.74 cm	eTSA	0.65 (range: 0.18 – 1.42)	4
<i>Bowers et al.<sup>11</sup></i>	27	54 (23-77)	NS	18.5	NR	mTCA + eTSA	NR	3
<i>Ceylan et al.<sup>12</sup></i>	23	52.9 (23-77)	NS	18.5	Mean DM 2.55 cm	eTSA	1.82 (range: 0.17 – 2.42)	3
<i>Chen et al.<sup>13</sup></i>	49	49.8 (4-78)	NS	33	NR	mTCA	2.44 (range: 0.5 – 4.04)	4
<i>Chobya et al.<sup>15</sup></i>	34	55.7 (23-78)	0 & 0	15	Mean DM: 2.43 cm	mTCA	7.98 (range: 1.25 – 16.2)	3
<i>Chondhury et al.<sup>16</sup></i>	6	39.5 (29-52)	NS	33	Mean DM: 3.5 cm	eTSA	0.58 (range: 0.16 – 1)	4
<i>cook et al.<sup>20</sup></i>	3	40.3 (32-55)	NS	0	NR	eTSA	NR	3
<i>Curry et al.<sup>21</sup></i>	20	59.1 (SD: 11.1)	0 & 0	15	Mean DM: 3.25 (SD: 1.38 cm)	mTCA	4.69 (SD: 2.83)	4
<i>De Dvinitis et al.<sup>25</sup></i>	51	NS	NS	20	DM: 6; <2cm, 33; 2-4cm, 5; >4 cm	mTCA + eTSA	Range: 0.75 – 21	4
<i>Della puppa et al.<sup>26</sup></i>	23	NS	NS	0	NR	mTCA	3.42 (range: 0.225 – 6.42)	3
<i>Fatemi et al.<sup>29</sup></i>	23	40 (SD: 22)	NS	30	Mean DM: 3.08 cm	mTCA + eTSA	eTSA: 1.67 (range: 0.25 – 5), mTCA: 1.17 (range: 0.92 – 1.5)	4
<i>Gadgil et al.<sup>30</sup></i>	5	51 (31-66)	0 & 0	40	Mean volume: 6.3 cm <sup>3</sup>	eTSA	1.25 (range: 0.25 – 2.25)	4
<i>Ganna et al.<sup>32</sup></i>	24	53.8 (33-80)	0 & 0	17	Mean DM: 2.63 cm	mTCA	4.33 (range: 1.5 – 7.67)	3
<i>Goel et al.<sup>34</sup></i>	85	NS	NS	NS	NR	mTCA	4 (range: 0.5 – 9)	4
<i>Hayhurst et al.<sup>35</sup></i>	9	48.7 (29-65)	0 & 0	42	NR	eTSA	Median follow-up 38.6 (range 12 – 60 months)	4
<i>Jang et al.<sup>35</sup></i>	24	49.5 (25-70)	NS	21	Mean DM: 2.06 cm	mTCA	1.73 (range: 0.25 – 4.5)	3
<i>Khan et al.<sup>40</sup></i>	20	56.5 (31-81)	0 & 0	30	Mean volume: 11.98 cm <sup>3</sup>	eTSA	NS	3
<i>Kitano et al.<sup>41</sup></i>	28	Median: 55 (range: 42-76)	NS	14%	Mean volume: 8.1 mm <sup>3</sup> (range 0.7–31.4 mm <sup>3</sup> )	mTCA + eTSA	NS	3
<i>Koutourousiou et al.<sup>48</sup></i>	70	57.3 (36-88)	0 & 0	16	Mean DM: 2.3 cm	eTSA	2.42 (range: 0.083 – 8.17)	3
<i>Landeiro et al.<sup>45</sup></i>	23	56.2 (38-77)	NS	35	NR	mTCA	2.6 (range: 0.5 – 10.3)	3
<i>Leveque et al.<sup>47</sup></i>	18	63.8 (31-88)	NS	NS	DM <4.0 cm: 11; >4.0 cm: 7	mTCA	4.74 (SD: 2.74)	4
<i>Li et al.<sup>46</sup></i>	43	53.8 (24-68)	NS	28	DM: <2 cm: 8, 2-4 cm: 22, >4 cm: 13	mTCA	5.4 (range: 2 – 10)	3
<i>Li-Hua et al.<sup>49</sup></i>	67	48.7 (28-76)	NS	42	DM: <3 cm: 29, >3cm: 38	mTCA	2.44 (range: 0.5 – 4.04)	4
<i>Liu et al.<sup>50</sup></i>	19	NS	NS	NS	NR	mTCA	1.24 (range: 0.33 – 3.83)	4
<i>Mahmoud et al.<sup>51</sup></i>	58	56 (13-80)	NS	31	Mean DM: 2.9	mTCA	1.92 (up to 12 years)	4
<i>Margalit et al.<sup>52</sup></i>	51	57.1 (28-83)	NS	32	Mean max DM 2.94 cm (SD: 1.07)	mTCA	3.51 (range 0.17 – 7)	3
<i>Mathiesen et al.<sup>53</sup></i>	29	58.3 (30-84)	0 & 0	21	Mean max DM: 23.9 cm	mTCA	6 (1.5 - 10)	4
<i>Nakamura et al.<sup>56</sup></i>	72	54.3 (30-86)	1 & 0	24	Mean max 2.5 cm	mTCA	3.8 (range: 0.33 – 19.8)	3
<i>Nanda et al.<sup>58</sup></i>	24	NS	NS	NS	DM: <3 cm: 3, 3-5 cm: 6, >5 cm: 21	mTCA	Median: 1.5	4
<i>Ogawa et al.<sup>61</sup></i>	29	58.9 (43-79)	2 & 0	26	NR	eTSA	2.98 (range: 0.5 – 4.92)	3
<i>Padhye et al.<sup>62</sup></i>	3	66 (65 – 66)	0 & 0	0	Mean volume 25.7 cm <sup>3</sup>	eTSA	1.83 (range: 0.25 – 6)	4

Legend: Abbreviations; NS: Not specified, NR: not reported, DM: diameter, eTSA: endoscopic transsphenoidal approach, mTCA: microscopic transcranial approach, SD: Standard deviation, NOS: New-Castle Ottawa Scale.\*The modified NOS score varied between 3 and 4; the difference was mainly caused by not specifying the completeness of follow-up.† One OGM study (ref 13) compared eTSA to mTCA and was given 5 stars



## Meta-analysis

Comprehensive meta-analysis (CMA) version 3 was used to calculate separate overall incidence using the fixed-effect model with the inverse variance method and the random-effect model according to the method of DerSimonian and Laird,<sup>27</sup> in the endonasal endoscopic and transcranial approach for the following variables: GTR, arterial injury, visual improvement, CSF leakage, and mortality. A resulting p-interaction value from the subgroup analysis comparing eTSA and mTCA was considered significant if  $< 0.05$ . Study heterogeneity was assessed by calculating I-squared values and P-values from the Cochrane Q test. Publication bias was assessed with Begg's tests and was corrected for by a trim-and-fill method. Finally, a meta-regression was conducted on each of age, gender (dichotomized by male percentage below/above the median category), and continent (North America as the reference) for eTSA and mTCA separately. For visual outcomes, only continent could be assessed as a source of heterogeneity as not all patients presented with visual problems and baseline characteristics from this subgroup were not available. A subgroup analysis for tumor size and grade was not possible due to great variance in reporting.

## Results

After removing duplicates, 1684 articles were identified. After screening for titles and abstracts, 1426 articles were excluded and 216 full texts were reviewed (Figure 3.1). For TSM, 44 case series (of which 11 in eTSA, 29 in mTCA, and 4 in both) were included in the meta-analysis for the different outcomes, including a total of 1444 patients<sup>3, 5, 8, 11-13, 15, 16, 20, 21, 23, 25, 29, 30, 32, 34-36, 40, 41, 43, 45, 47-53, 56, 58, 61-63, 65, 66, 68, 69, 72, 73, 77, 79, 81, 82</sup>. As for OGM, 25 case series (of which 6 in eTSA, 18 in mTCA, and 1 in both) were included describing outcomes in 891 patients<sup>2, 4, 6, 7, 17, 19, 22, 24, 25, 35, 37, 40, 44, 47, 55, 57, 60, 62, 64, 67, 68, 70, 75, 76, 78</sup>.

The median number of patients per study was 24 for TSM (Table 3.1) and 29 for OGM (Table 3.2). The average percentage of male patients was 27% for TSM and 32% for OGM. The median age was 51.0 for TSM and 52.0 for OGM. The median follow-up time was 6.0 years based on 35 studies for TSM<sup>3, 5, 8, 12, 13, 15, 16, 21, 25, 29, 30, 32, 34, 36, 43, 45, 47-53, 56, 61, 62, 65, 66, 68, 72, 73, 77, 79, 81, 82</sup> and 7.0 years based on 20 studies for OGM<sup>2, 4, 6, 7, 17, 19, 22, 24, 25, 37, 44, 47, 55, 57, 60, 62, 67, 68, 76, 78</sup>. The modified NOS score varied between 3 and 4 out of 7 among the TSM and OGM case series<sup>3, 5, 8, 11-13, 15, 16, 20, 21, 23, 25, 29, 30, 32, 34-36, 40, 41, 43, 45, 47-53, 56, 58, 61-63, 65, 66, 68, 69, 72, 73, 77, 79, 81, 82</sup>. Outcomes of the meta-analysis for TSM (Table 3.3) and OGM (Table 3.4) are shown.

## Gross Total Resection

For TSM, GTR after eTSA was reported in 14 studies<sup>8, 11-13, 16, 20, 23, 29, 30, 40, 43, 61, 62, 79</sup> and after mTCA was reported in 31 studies<sup>3, 5, 11, 13, 15, 21, 23, 25, 29, 32, 34, 36, 45, 47-49, 51-53, 56, 58, 63, 65, 66, 68, 69, 72, 77, 79, 81, 82</sup>. In a fixed effect model, the overall incidence for GTR was not significantly different comparing eTSA (incidence=83.0%; 95%-CI=76.7-88.0%, p-heterogeneity=0.74, I<sup>2</sup>=0%, 221 patients) to mTCA (incidence=85.8% (95%-CI=83.6-87.9%, p-heterogeneity=0.07, I<sup>2</sup>:

Table 3.3: Outcomes of the tuberculum sellae meningioma (TSM) meta-analysis

Outcomes in TSM	# of studies	prevalence % (95% CI) Fixed & random effects	P-interaction Fixed & Random effects	F (%)	Cochrance Q test (p-value)	Begg's test (p-value) for publication bias	Meta-regression on age, Meta-regression on gender, (-2.7% vs. ≥2.7% males)	Meta-regression on continent (north america as reference)	OVERALL P-VALUE; RANDOM EFFECT
<b>GTR</b>									
eTSA; FIXED	14	83.0 (76.7-88.0)	0.34	0.00	0.74	0.31	0.05 (0.26)		0.62
RANDOm		83.1 (76.2-88.3)	0.33						
mTCA; FIXED	31	85.8 (83.6-87.9)		28.4	0.07		0.01 (0.78)		0.02
RANDOm		86.1 (83.5-88.4)							
<b>Visual improvement</b>									
eTSA; FIXED	12	77.7 (70.3-83.7)	<0.01	7.90	0.37		*		0.42
RANDOm		77.0 (64.8-85.9)	0.04			0.14			
mTCA; FIXED	28	60.7 (57.3-64.0)		77.4	<0.01		*		0.30
RANDOm		62.6 (55.2-69.3)							
<b>CSF Leak</b>									
eTSA; FIXED	15	19.3 (14.1-25.8)	<0.01	0.00	0.50	0.98	0.01 (0.77)		0.16
RANDOm		19.3 (14.1-25.8)	<0.01						
mTCA; FIXED	24	5.81 (4.33-7.75)		0.00	0.93		0.05 (0.52)		0.94
RANDOm		5.81 (4.33-7.75)							
<b>Arterial injury</b>									
eTSA; FIXED	12	4.89 (2.33-9.94)	0.03	0.00	0.97	<0.01†	-0.04 (0.54)		0.69
RANDOm		4.89 (2.33-9.94)	0.03						
mTCA; FIXED	27	1.86 (1.13-3.05)		0.00	0.99		-0.01 (0.96)		0.78
RANDOm		1.86 (1.13-3.05)							
<b>Mortality</b>									
eTSA; FIXED	10	5.15 (2.39-10.8)	0.14	0.00	0.85	<0.01‡	-0.02 (0.81)		0.91
RANDOm		5.15 (2.39-10.8)	0.14						
mTCA; FIXED	30	2.67 (1.77-4.02)		0.00	0.99		-0.02 (0.76)		0.99
RANDOm		2.67 (1.77-4.02)							

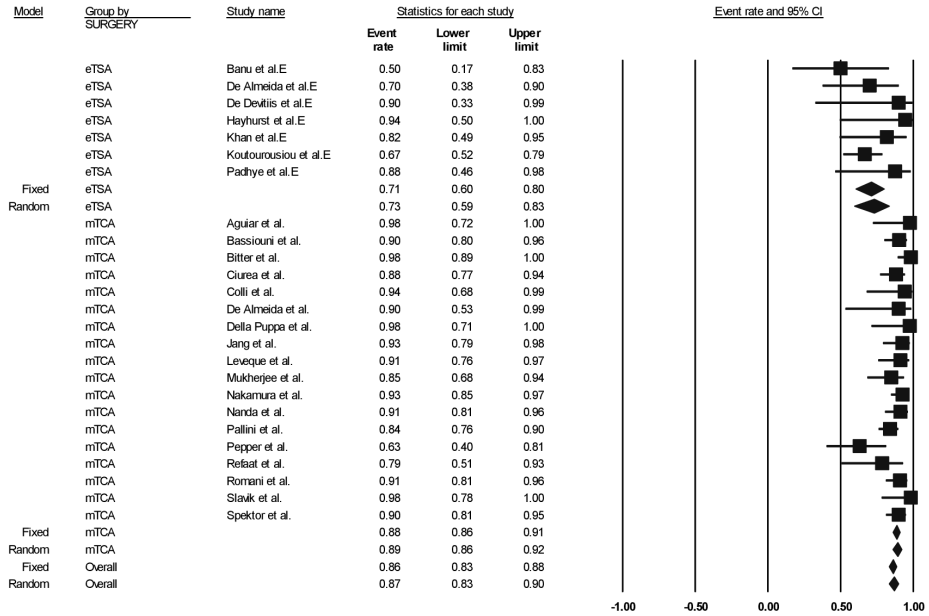
Legend: Abbreviations: GTR, gross total resection; mTCA: microscopic transcranial approach, eTSA: endoscopic transsphenoidal approach; CSF, cerebrospinal fluid; \*meta-regression for age and gender was not possible for visual outcomes because the numbers were given for all subjects in the study and not all patients presented with visual problems †The Egger's p-value for publication bias was 0.35, non-significant. ‡The Egger's p-value for publication bias was 0.45, non-significant.

Table 3.4: Outcomes of the olfactory groove meningioma (OGM) meta-analysis

Outcomes in OGM	# of studies	Fixed & random prevalence % (95% CI)	P-interaction Fixed & Random effects	I <sup>2</sup> (%)	Cochrance Q test (p-value)	Begg's test (p-value) for publication bias	Meta-regression on age, meta-regression on Gender, (-29% vs. ≥29% males)	Meta-regression on continent (north america as reference)	OVERALL P-VALUE; RANDOM EFFECT
GTR	7	eTSA; FIXED	<0.01	0.00	0.45		-0.18 (0.05)		0.15
		RANDOm	<0.01			0.48		0.05 (0.17)	0.30
mTCA; FIXED	18	eTSA; FIXED	0.33	65.5	0.03	0.25	*	*	0.34
		RANDOm	0.40						
Visual improvement	4	eTSA; FIXED	0.33	65.5	0.03	0.25	*	*	0.34
		RANDOm	0.40						
eTSA; FIXED	9	eTSA; FIXED	<0.01	68.6	<0.01		*	*	0.57
		RANDOm	<0.01						
Arterial injury	7	eTSA; FIXED	<0.01	25.8	0.22	0.30	0.01 (0.94)	-0.30 (0.60)	0.54
		RANDOm	0.04						
Mortality	17	eTSA; FIXED	0.12	60.2	<0.01		-0.12 (<0.01)	0.07 (0.91)	0.22
		RANDOm	0.12						
Mortality	7	eTSA; FIXED	0.88	0.00	0.98	<0.01†	-0.06 (0.67)	0.97 (0.38)	0.79
		RANDOm	0.88						
Mortality	17	eTSA; FIXED	0.88	0.00	0.94	0.21	-0.06 (0.68)	1.20 (0.34)	0.78
		RANDOm	0.88						
Mortality	19	eTSA; FIXED	0.88	0.00	0.74		-0.04 (0.44)	1.02 (0.02)	0.08
		RANDOm	0.88						

Legend: Abbreviations: GTR, gross total resection; mTCA: microscopic transcranial approach, eTSA: endoscopic transsphenoidal approach; CSF, cerebrospinal fluid; \*meta-regression for age and gender not possible for visual outcomes because the numbers were given for all subjects in the study and not all patients presented with visual problems †The Egger's p-value for publication bias was 0.50, non-significant.

Figure 3.2: Pooled prevalence of gross total resection by approach for olfactory groove meningioma resection: endoscopic transsphenoidal approach vs. microscopic transcranial approach.



P-interaction value < 0.01. Abbreviations: eTSA: endoscopic transsphenoidal approach, mTCA: microscopic transcranial approach.

28.4%, 1223 patients); (p-interaction value=0.34). In meta-regression, TSM studies with lower percentage of males had a higher rate of GTR (p=0.03). Studies conducted in Europe and Africa had significantly higher rates of GTR than North America (p=0.02). Begg's test for publication bias was non-significant (p=0.31, **Table 3.3**).<sup>4, 22, 24, 35, 40, 44, 62</sup> studies and 18 mTCA studies<sup>2, 6, 7, 17, 19, 22, 25, 37, 47, 55, 57, 60, 64, 67, 68, 70, 75, 76</sup> Unlike TSM, the overall fixed incidence of GTR was significantly lower in eTSA (incidence=70.9%; 95%-CI=60.3-79.9%, p-heterogeneity=0.45, I<sup>2</sup>=0%, 86 patients) compared to mTCA (88.5%; 95%-CI=85.9-90.7%, p-heterogeneity=0.06, I<sup>2</sup>:36.5%, 786 patients); (p-interaction<0.01; Figure 3.2). In meta-regression, only higher age was associated with lower GTR in resected OGM with the eTSA approach with borderline significance (p=0.05). Begg's test for publication bias was non-significant (p=0.48) (**Table 3.4**).

### Visual improvement

Visual outcomes were reported in 12 studies for eTSA<sup>8, 12, 16, 23, 29, 30, 35, 40, 43, 61, 62, 79</sup> and 28 studies for mTCA<sup>3, 5, 13, 15, 21, 23, 25, 29, 32, 34, 36, 47-51, 56, 63, 65, 66, 68, 69, 72, 73, 77, 81, 82</sup> with a total of 1139 patients presenting with visual

problems.<sup>3, 5, 8, 12, 13, 15, 16, 21, 23, 25, 29, 30, 32, 34-36, 40, 43, 47-51, 53, 56, 61-63, 65, 66, 68, 69, 72, 73, 77, 79, 81, 82</sup> Post-operative visual improvement was significantly higher for eTSA (incidence=77.7%; 95%-CI=70.3-83.7%, p-heterogeneity=0.37, I<sup>2</sup>=7.90%, 167 patients) than mTCA (incidence=60.7% (95%-CI=57.3-64.0, p-heterogeneity< 0.01, I<sup>2</sup>=77.4%, 1139 patients) in fixed-effect models (p-interaction < 0.01). Because age and male percentage were not provided for this subgroup of patients who presented with visual problems, only continent could be assessed as a source of heterogeneity, which was not a significant source of heterogeneity for TSM resection using eTSA or mTCA. Begg's test for publication bias was non-significant (p=0.14, **Table 3.3**). One study specifically addressed visual improvement per approach in TSM resection, finding that eTSA was associated with more visual acuity improvement (≥5%; p-value: 0.01), but not with improvement of visual field deficits (p-value=0.61)<sup>41</sup>

Visual improvement in OGM patients was described 4 eTSA studies<sup>4, 40, 44, 62</sup> and 9 mTCA studies<sup>6, 7, 47, 57, 60, 68, 70, 75, 78</sup> with 224 patients presenting with visual symptoms. The resulting fixed overall improvement rate was 64.5% (95%-CI: 37.9-84.4%, p-heterogeneity=0.03; I<sup>2</sup>=65.5%) for eTSA compared to 50.6% (95%-CI=42.9-58.4%, p-heterogeneity <0.01, I<sup>2</sup>=68.6%) for mTCA; however, this difference was not significant (p-interaction value: 0.33). Continent was not identified as a significant source of heterogeneity for eTSA (p=0.34) and mTCA (p=0.57). Begg's test for publication bias was non-significant (p=0.25, **Table 3.4**).

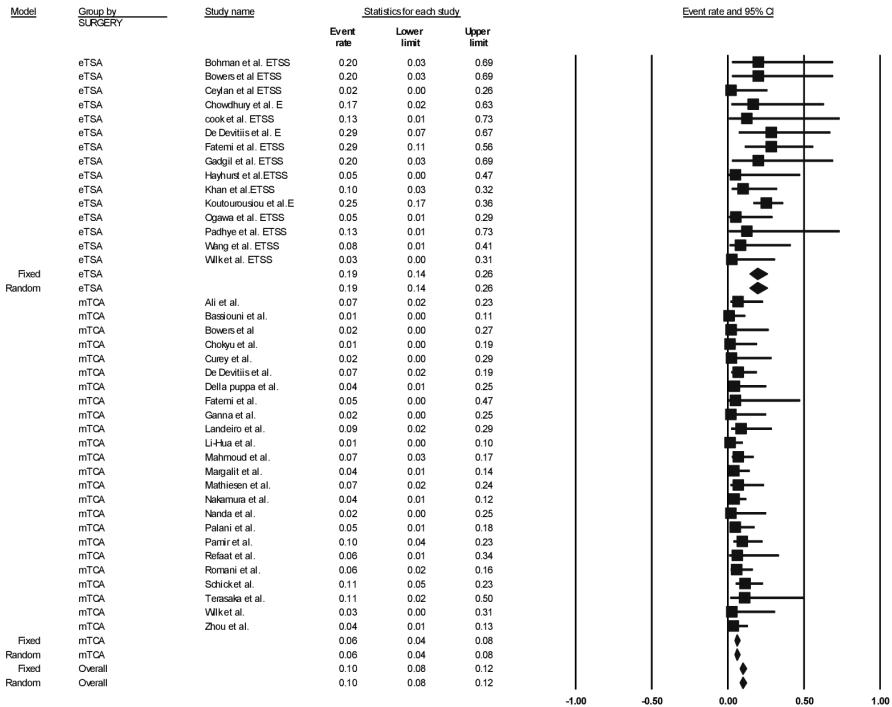
### Cerebrospinal fluid leakage

CSF leak occurrence after TSM resection was extracted from 15 eTSA studies<sup>8, 11, 16, 20, 23, 29, 30, 35, 40, 43, 61, 62, 79, 81</sup> and 24 mTCA studies. The overall incidence of post-operative CSF leakage was significantly higher in patients treated with the eTSA approach (incidence=19.3%; 95%-CI=14.1-25.8%, p-heterogeneity=0.50, I<sup>2</sup>=0%, 225 patients) than with mTSA (incidence= 5.81%; 95%-CI=4.33-7.75%, p-heterogeneity=0.93, I<sup>2</sup>=0%, 879 patients) in fixed models (p-interaction value <0.01, Figure ??). Age, gender and continent were not identified as sources of heterogeneity using meta-regression (all p-value > 0.05). Begg's test revealed no significant publication bias (p=0.98) (**Table 3.3**).

In OGM, 7 eTSA studies<sup>4, 22, 24, 35, 40, 44, 62</sup> and 17 mTCA studies<sup>2, 6, 7, 17, 19, 22, 25, 37, 55, 57, 60, 64, 67, 68, 70, 75, 76, 78</sup> including 889 patients described whether patients postoperatively developed a CSF leak. The overall incidence in fixed models was statistically significantly higher (p-interaction<0.01) for eTSA (incidence=25.1%; 95%-CI=17.5-34.8%, p-heterogeneity=0.22, I<sup>2</sup>=25.8%) than mTCA (incidence=10.5%; 95%-CI=8.22-13.4%, p-heterogeneity <0.01, I<sup>2</sup>=60.2%) (Figure 3.3). In meta-regression, only older age was significantly associated with lower CSF leakage rate for mTCA (p<0.01). For eTSA, age, gender, and continent were not identified as potential effect modifiers (p-interaction for all > 0.05). Begg's test indicated no significant publication bias (p=0.30, **Table 3.4**).

### 3. The endoscopic endonasal approach is not superior to the microscopic transcranial approach for anterior skull base meningiomas

Figure 3.3: Pooled prevalence of cerebrospinal fluid leak by approach for tuberculum sellae meningioma resection: endoscopic transsphenoidal approach vs. microscopic transcranial approach

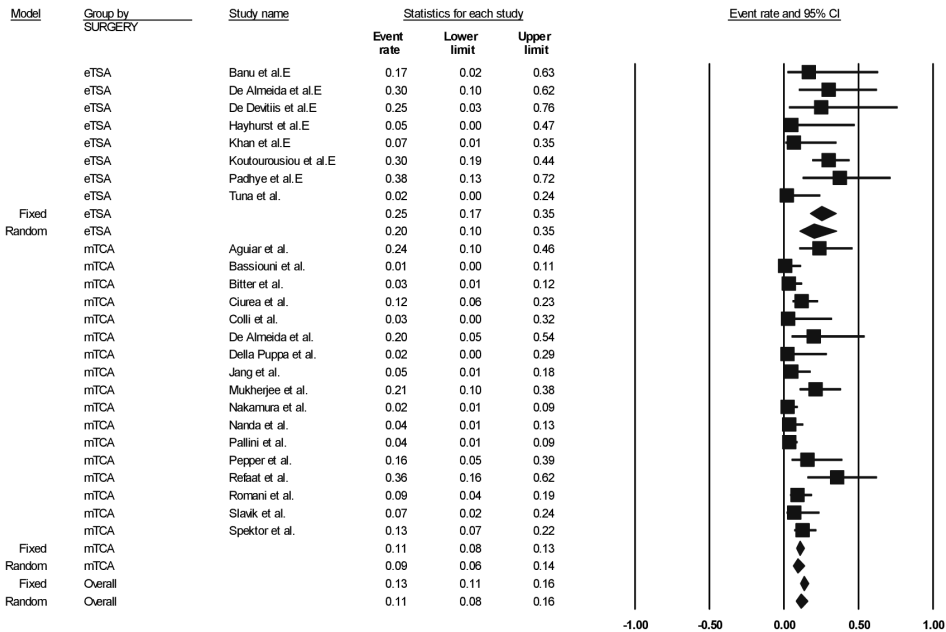


P-interaction value < 0.01. Abbreviations: CSF: cerebrospinal fluid eTSA: endoscopic transsphenoidal approach, mTCA: microscopic transcranial approach.

### Intraoperative arterial injury

For intraoperative arterial injury, outcomes were extracted from 12 eTSA studies<sup>8, 11, 16, 23, 29, 30, 35, 40, 43, 61, 62, 79</sup> and 27 mTCA studies for TSM<sup>3, 5, 11, 12, 15, 21, 23, 25, 29, 32, 36, 45, 48, 49, 51, 52, 56, 58, 63, 65, 68, 69, 72, 77, 81, 82</sup>. The overall incidence of intraoperative arterial injury was significantly higher for eTSA (incidence=4.89%; 95%-CI=2.33-9.94%, p-heterogeneity=0.97, I<sup>2</sup>=0%, 225 patients) than for MTCA (incidence=1.86%; 95%-CI=1.13-3.05%, p-heterogeneity=0.99, I<sup>2</sup>=0%, 225 patients) in fixed effect models (p-interaction value=0.03; Figure 3.4). Trial-level covariates such as age, continent, and gender did not significantly contribute to any heterogeneity in the models, both for eTSA and mTCA (all p-interaction values>0.05). There was a significant publication bias, indicating that study results with higher arterial injury incidence tended not to be published (Begg's test p-value<0.01 Table 3.3). However, the imputed overall incidence estimate for TSM was not materially different from the original incidence rate (not shown).

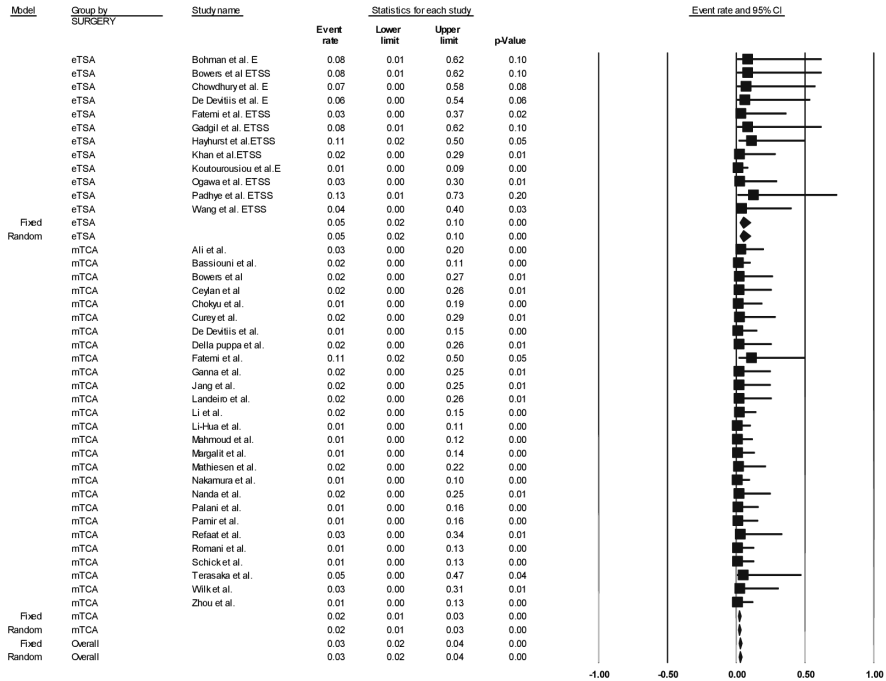
Figure 3.3: Pooled prevalence rates of cerebrospinal fluid leak by approach for olfactory groove meningioma resection: endoscopic transsphenoidal approach vs. microscopic transcranial approach



P-interaction value < 0.01; Abbreviations: CSF: cerebrospinal fluid eTSA: endoscopic transsphenoidal approach, mTCA: microscopic transcranial approach.

For OGM, the incidence of intraoperative arterial injury was extracted from 858 patients in 7 eTSA studies<sup>4, 22, 24, 35, 44, 62</sup> and 17 mTCA studies<sup>2, 6, 7, 17, 19, 22, 25, 37, 55, 57, 60, 64, 67, 68, 70, 75, 76, 78</sup>. For eTSA, the fixed overall incidence of intraoperative arterial injury was 3.88% (95%-CI=1.55-9.43%, p-heterogeneity=0.98, I<sup>2</sup>=0%). Although lower, the incidence for mTCA was 1.62% (95%-CI=0.87 - 2.98%, p-heterogeneity=0.99, I<sup>2</sup>=0%) but not significantly different (p-interaction = 0.12). Covariates such as age, gender, and continent were not identified as sources of heterogeneity for both eTSA and mTCA procedures (all p-interaction > 0.05). Although Begg's Test for publication bias indicated the presence of publication bias (p-value < 0.01), Egger's test did not (p-value=0.50, Table 3.4). Moreover, the imputed overall incidence estimates for OGM were not materially different from the original incidence values (not shown).

Figure 3.4: Pooled prevalence rates of intra operative arterial injury by approach for tuberculum sellae meningioma resection: endoscopic transsphenoidal approach vs. microscopic transcranial approach.



Legend: P-interaction value: 0.03. Abbreviations: eTSA: endoscopic transsphenoidal approach, mTCA: microscopic transcranial approach.

## Mortality

Mortality after TSM surgery was described in a total of 10 eTSA studies<sup>8, 11, 23, 29, 40, 43, 61, 62, 79</sup> and 30 mTCA studies<sup>3, 5, 11-13, 15, 21, 23, 25, 29, 30, 35, 36, 45, 48, 49, 51-53, 56, 58, 63, 65, 68, 69, 72, 77, 81, 82</sup>. eTSA resulted in a 30-day mortality incidence of 5.15% (95%-CI=2.39-10.8, p-heterogeneity=0.85, I<sup>2</sup>=0%, 194 patients), which was not significantly different from mTCA (incidence=2.67%; 95%-CI=1.77-4.02, p-heterogeneity=0.99, I<sup>2</sup>=0%, 962 patients) in fixed models (p-interaction=0.14). Age, gender, and continent did not appear to have different incidence values based on the meta-regression results for both eTSA and mTCA (all p>0.05). Begg's test p-value for publication bias was significant indicating that articles with higher mortality rates tend not to be published (p < 0.01, **Table 3.3**); however, the trim-and-fill method suggested that the imputed overall incidence estimates for TSM were not materially different from the original incidence values (not shown).

For OGM, 7 eTSA studies<sup>4, 22, 24, 35, 40, 44, 62</sup> and 19 mTCA studies<sup>2, 6, 7, 17, 19, 22, 25, 37, 47, 55, 57, 60, 64, 67, 68, 70, 75, 76, 78</sup> including described mortality incidence. For eTSA, the overall 30-day mortality incidence was 4.27%



(95%-CI=1.50-11.6%,  $p$ -heterogeneity=0.94;  $I^2=0\%$ ; 82 patients), which was not significantly different from the mortality incidence in the mTCA group (incidence = 3.92%, 95%-CI=2.66-5.75,  $p$ -heterogeneity=0.74,  $I^2=0\%$ ; 779 patients) in fixed models ( $p$ -interaction=0.88). In a meta-regression for gender, it was identified that studies with a lower male percentage were significantly associated with a higher mortality incidence for mTCA ( $p=0.02$ ) but not for eTSA ( $p=0.34$ ), while age and continent were not. Begg's test for publication bias was non-significant ( $p=0.21$ ) (Table 3.4).

### Random-effect models

For all the above-mentioned results, the random-effect models yielded similar results (Table 3.3 and 3.4).

### Blood loss, operating time, and length of stay in hospital

For blood loss, operating time and length of hospital stay, a quantitative meta-analysis was not feasible because of the paucity of studies reporting them; hence, these few studies were systematically reviewed. In TSM, mean blood loss ranged from 448 to 970 mL in three studies describing mTCA, compared to 200 to 617 mL for eTSA<sup>21, 30, 41, 47</sup>. The mean operating time ranged from 375 to 444 minutes for eTSA in two studies, and from 116 to 426 minutes for mTCA in four studies<sup>21, 23, 41, 47, 69</sup>. Hospital length of stay ranged from 6 to 21 days in one study in patients treated by an eTSA<sup>23</sup>.

For OGM, blood loss was only reported in one case series in patients operated with an interhemispheric approach (mean: 570.9 ml, SD: 442)<sup>47</sup>. The mean hospital length of stay for eTSA ranged from 11 to 13.5 days in 2 studies<sup>9, 13</sup>, compared to 8.5 to 18 days for mTCA<sup>7, 22, 24, 78</sup>. Of these studies, one described the mean length of stay in both approaches, with a mean length of stay of 11 days for eTSA compared to 8.5 days in mTCA ( $p=0.54$ )<sup>22</sup>. Operating time ranged from six to ten hours in one study reporting outcomes from eTSA<sup>24</sup>. In a study examining patients with an interhemispheric approach, the mean operating time was 209 minutes (standard deviation: 103)<sup>47</sup>.

## Discussion

In this meta-analysis, eTSA was not shown to be superior to mTCA for resection of both OGMs and TSMs. Only in patients with preoperative visual deficits due to TSM, eTSA seems superior to mTCA, but with great heterogeneity. In patients with TSM, eTSA resulted in higher rates of visual improvement, similar rates of GTR and more CSF leaks and intraoperative arterial injury. While in patients with OGM, results of both techniques were similar for visual improvement and intraoperative arterial injury, but worse in patients operated with eTSA for GTR and CSF leaks. There seems to be no substantial difference in peri-operative blood loss, operating time, or length of hospital stay between the two approaches. There was no substantial difference between incidence rates between in fixed- and random-effect models. This could be explained by a relative lack of difference between the study populations in the studies, which could have been implicated in the case of a difference between the models. However, mTCA was associated with considerable heterogeneity for out-

comes visual improvement in TSMs and CSF leak for OGMs which could reflect a relatively greater inter-study variability for these outcomes.

Although no significant difference was identified in GTR rate for TSM, mTCA resulted in higher GTR rates in OGM. As OGMs are located more anterior than TSM an extended eTSA approach is needed for OGM which requires more extensive drilling of the anterior skull base and a potential suboptimal view because of the angle of the scope. However, it should also be noted that GTR was not always the primary the goal of surgery (e.g. the goal could be preserving vision)<sup>43, 72</sup> Furthermore, many other factors seem to influence GTR rate. One factor may be the learning curve associated with eTSA, as seen with pituitary adenoma resection<sup>10, 14, 46</sup> Also, tumor factors such as large size and vascular enhancement can significantly lower GTR rate for eTSA, as seen in one study in TSM<sup>43</sup> Furthermore, presence of a "cortical cuff" (a layer of brain between the tumor capsule and cerebral vessels) on MRI was associated with more GTR in OGM<sup>40</sup>

For visual improvement, it remains to be determined whether eTSA is truly associated with more visual improvement than mTCA in TSM, as the heterogeneity among mTCA studies could not be corrected for. Therefore, the difference witnessed may very well be insignificant as seen with OGM. Furthermore, as the variance in reporting of tumor size did not allow for it to be incorporated in a meta-regression, the TSMs in the eTSA group may very well be smaller compared to the mTCA group. However, regarding visual outcomes, one study looking at the mTCA approach suggests that visual outcomes are associated with age and duration of visual symptoms but not with actual tumor size<sup>28</sup>

Both for OGM and TSM, eTSA was significantly associated with more CSF leakage. However, prophylactic lumbar drain placement varied greatly; in some studies almost all patients were given a prophylactic pre-operative lumbar drain, while in other studies none of the included patients were drained<sup>8, 24, 30, 35, 40, 44</sup> Also, the different studies used different reconstruction techniques (e.g. introduction of a vascularized flap and use of certain glues), although this caused no considerable heterogeneity among the studies<sup>40, 44, 62</sup> Another factor in the post-operative CSF leakage rate may be the level of neurosurgeon's experience. Although the difference was not significant and in a small number of patients, one group had two leaks in their first group of patients (n=8), compared to none in the latter group (n=12)<sup>40</sup> Also, the use of a vascularized flap for reconstruction of the skull base seems to bring CSF leakage rate down considerably<sup>40, 43, 62</sup> Still, this rate is considerably higher than overall incidence calculated for mTCA. Further improvement with more sophisticated reconstruction techniques following eTSA may bring the rate of CSF leakage down to those reported for mTCA.

MTCA for TSM resulted in a significantly lower rate of intraoperative arterial injury compared to eTSA. However, this seems not to have caused a significant difference in mortality. Nevertheless, a relative low number of patients treated with an eTSA may have caused a relatively low power, as the p-interaction value for mortality for TSM approaches significance (p=0.14). A significant association between intraoperative arterial injury and eTSA was not seen in OGM, again this may be explained by low power and a low number of studies, but also because of the anterior location

of the tumor. Previously, two reviews have described a comparison between eTSA and mTCA for both TSM and OGM. The first review identified higher GTR rate and less CSF leak associated with mTCA for both OGM and TSM ( $p < 0.01$  for both, using chi-squared test and Fisher's exact test respectively), which is similar to our findings except for the GTR rate for TSM<sup>42</sup>. A second review found significantly more visual improvement ( $p < 0.01$ ) and CSF leakage ( $p < 0.01$ ) for eTSA and no difference in mortality ( $p = 0.15$ ) for TSM and OGM together, which is similar to our findings. eTSA was also found to be associated with a lower GTR rate ( $p < 0.01$ ) compared to mTCA, which was only the case in OGM in this meta-analysis<sup>71</sup>. Finally, the authors of a meta-analysis for TSM found that eTSA was significantly associated with CSF leakage (OR: 3.9; 95%-CI: 1.15-15.75,  $p < 0.05$ ) and visual improvement (OR 1.5; 95%-CI 1.18, 1.82,  $p < 0.05$ ), which again is similar to our results<sup>18</sup>.

Strengths of this study include an extensive review of the literature and evaluation of outcomes such as arterial injury, length of hospital stay, and blood loss. The use of both fixed- and random-effect models, evaluation of heterogeneity between the included studies, and assessment of publication bias ensures a rigorous evaluation of outcomes with appropriate valuation of the results. All outcomes were also subjected to meta-regression for various study characteristics where possible to try to identify sources of heterogeneity between the studies.

There are several limitations of this meta-analysis. First, the decision of discarding studies published before 2004 produces limitation. The decision to do so was based on the assumption that also mTCA outcomes improve over time with continual innovation and that meningiomas were not reported to be resected with an eTSA before that time<sup>26, 38</sup>. Regarding the included studies, only case series were identified, resulting in the inability of calculation overall odds ratios. There is probably also a great difference between the population of patients that were deemed eligible for a eTSA resection, compared to those resected with mTCA, due to size, extension and invasion of the tumors (confounding by indication). Furthermore, one could argue that only looking at perioperative outcomes may not be conclusive, as especially recurrence happens during follow-up. However, as GTR and World Health Organization (WHO) grade remain the main prognostic factors for predicting recurrence, opting for eTSA should be done with great caution, as high grade meningiomas may be harder to resect completely<sup>59, 74</sup>. However, it was not possible to correct for meningioma size, which is unfortunate as very small meningiomas may show very different results. Furthermore, it was not possible to correct for WHO grade, which could theoretically alter the results<sup>31</sup>. Also, the choice of approach varied greatly among mTCA approach studies<sup>1, 2, 5-7, 9, 47, 51, 56, 64, 70</sup>.

Indications for eTSA vary between groups. One group reported to operate all mid-line meningiomas regardless of size, extension, or configuration except for those tumors that extend from the anterior clinoid process<sup>43</sup>. It has also been suggested that if the tumor extends laterally over the internal carotid artery, chances of GTR are limited<sup>61</sup>. Others have suggested that larger tumors, tumors that extend laterally, involve vasculature or are calcified are also lesser candidates<sup>23, 44</sup>. Therefore, confounding by indication cannot be ruled out, especially since the patients in these studies were not randomized to either treatment. As a result, the exact indications and

contra-indications for eTSA remain to be determined.

Future studies should, therefore, focus on identifying clear indications for eTSA for OGM and TSM and its safety by direct comparison in a randomized study. Such a study should ideally be conducted in a research setting by experienced surgeons, as its safety has not been prospectively compared to mTCA and as both approaches seem to come with a considerable learning curve which results in different outcomes<sup>43</sup> Given the observation that younger patients seem to benefit more from eTSA compared to older patients ( $p=0.02$ ,  $n=34$ ), it is not unlikely that specific groups might benefit more from one of the approaches<sup>39</sup> Probably, patients with relatively small ( $<3$  cm), midline TSMs would probably be the best early candidates. These patients may benefit from a potential higher incidence of visual improvement postoperatively and the relative invasiveness of the eTSA approach. Further evaluation could be focused at characteristics such as size, a cortical cuff, and WHO grading to identify the best potential candidates for either approach<sup>40</sup> However, due to the low incidence of TSMs and OGMs in general and the great variety in anatomical characteristics among them this may very well be challenging. Therefore, other trial designs - e.g. a registry - should be considered when answering this question. Also, future improvement of the instruments used (e.g. 3D-endoscopes or glues) may improve results obtained by eTSA over time<sup>33</sup>

## Conclusion

This meta-analysis indicates that the endoscopic transsphenoidal approach (eTSA) has not been shown to be superior to the microscopic transsphenoidal approach (mTCA) for both olfactory groove meningiomas (OGMs) and tuberculum sellae meningiomas (TSMs). More specifically, eTSA was associated with lower GTR rate for OGMs compared to eTSA and higher rate of arterial injury in TSMs. Furthermore, eTSA was associated with more CSF leaks in in both OGMs and TSMs compared to mTCA. On the other hand, eTSA was associated with a higher rate of visual improvement postoperatively compared to mTCA, which was not observed for OGMs. All conclusions should, however, be interpreted with caution due to limitations of this study.

## References

1. Abbassy M, Woodard TD, Sindwani R, Recinos PF (2016) An Overview of Anterior Skull Base Meningiomas and the Endoscopic Endonasal Approach. *Otolaryngologic clinics of North America* 49:141-152
2. Aguiar PH, Tahara A, Almeida AN, Simm R, Silva AN, Maldaun MV, Panagopoulos AT, Zicarelli CA, Silva PG (2009) Olfactory groove meningiomas: approaches and complications. *Journal of clinical neuroscience : official journal of the Neurosurgical Society of Australasia* 16:1168-1173
3. Ali MZ, El-Mekawi S, Al-Azzazi A (2010) Tuberculum Sellae Meningiomas: Surgical Results and Outcome in 30 Cases. *Egyptian Journal of Neurology, Psychiatry and Neurosurgery* 47:549-554

4. Banu MA, Mehta A, Ottenhausen M, Fraser JF, Patel KS, Szentirmai O, Anand VK, Tsiouris AJ, Schwartz TH (2016) Endoscope-assisted endonasal versus supraorbital keyhole resection of olfactory groove meningiomas: comparison and combination of 2 minimally invasive approaches. *Journal of neurosurgery* 124:605-620
5. Bassiouni H, Asgari S, Stolke D (2006) Tuberculum sellae meningiomas: functional outcome in a consecutive series treated microsurgically. *Surgical neurology* 66:37-44
6. Bassiouni H, Asgari S, Stolke D (2007) Olfactory groove meningiomas: functional outcome in a series treated microsurgically. *Acta neurochirurgica* 149:109-121; discussion 121
7. Bitter AD, Stavrinou LC, Ntoulas G, Petridis AK, Dukagjin M, Scholz M, Hassler W (2013) The Role of the Pterional Approach in the Surgical Treatment of Olfactory Groove Meningiomas: A 20-year Experience. *Journal of neurological surgery. Part B, Skull base* 74:97-102
8. Bohman LE, Stein S, Newman JG, Palmer J, Adappa N, Khan A, Sitterley TT, Chang D, Lee JY (2012) Decision analysis: Endoscopic versus open resection of tuberculum sellae meningiomas. *Journal of Neurological Surgery, Part B: Skull Base* 73
9. Bohman LE, Stein SC, Newman JG, Palmer JN, Adappa ND, Khan A, Sitterley TT, Chang D, Lee JY (2012) Endoscopic versus open resection of tuberculum sellae meningiomas: a decision analysis. *ORL; journal for oto-rhino-laryngology and its related specialties* 74:255-263
10. Bokhari AR, Davies MA, Diamond T (2013) Endoscopic transsphenoidal pituitary surgery: a single surgeon experience and the learning curve. *British journal of neurosurgery* 27:44-49
11. Bowers CA, Altay T, Couldwell WT (2011) Surgical decision-making strategies in tuberculum sellae meningioma resection. *Neurosurgical focus* 30:E1
12. Ceylan S, Anik I, Koc K, Cabuk B (2015) Extended endoscopic transsphenoidal approach infrachiasmatic corridor. *Neurosurgical review* 38:137-147; discussion 147
13. Chen LH, Chen L, Liu LX (2011) Microsurgical management of tuberculum sellae meningiomas by the frontolateral approach: Surgical technique and visual outcome. *Clinical neurology and neurosurgery* 113:39-47
14. Chi F, Wang Y, Lin Y, Ge J, Qiu Y, Guo L (2013) A learning curve of endoscopic transsphenoidal surgery for pituitary adenoma. *The Journal of craniofacial surgery* 24:2064-2067

15. Chokyu I, Goto T, Ishibashi K, Nagata T, Ohata K (2011) Bilateral subfrontal approach for tuberculum sellae meningiomas in long-term postoperative visual outcome: Clinical article. *Journal of neurosurgery* 115:802-810
16. Chowdhury FH, Haque MR, Goel AH, Kawsar KA (2012) Endoscopic endonasal extended transsphenoidal removal of tuberculum sellae meningioma (TSM): An experience of six cases. *British journal of neurosurgery* 26:692-699
17. Ciurea AV, Iencean SM, Rizea RE, Brehar FM (2012) Olfactory groove meningiomas: a retrospective study on 59 surgical cases. *Neurosurgical review* 35:195-202; discussion 202
18. Clark AJ, Jahangiri A, Garcia RM, George JR, Sughrue ME, McDermott MW, El-Sayed IH, Aghi MK (2013) Endoscopic surgery for tuberculum sellae meningiomas: a systematic review and meta-analysis. *Neurosurgical review* 36:349-359
19. Colli BO, Carlotti CG, Jr., Assirati JA, Jr., Santos MB, Neder L, Santos AC, Batagini NC (2007) Olfactory groove meningiomas: surgical technique and follow-up review. *Arquivos de neuro-psiquiatria* 65:795-799
20. Cook SW, Smith Z, Kelly DF (2004) Endonasal transsphenoidal removal of tuberculum sellae meningiomas: Technical note. *Neurosurgery* 55:239-244
21. Curey S, Derrey S, Hannequin P, Hannequin D, Freger P, Muraine M, Castel H, Proust F (2012) Validation of the superior interhemispheric approach for tuberculum sellae meningioma: clinical article. *Journal of neurosurgery* 117:1013-1021
22. de Almeida JR, Carvalho F, Vaz Guimaraes Filho F, Kiehl TR, Koutourousiou M, Su S, Vescan AD, Witterick IJ, Zadeh G, Wang EW, Fernandez-Miranda JC, Gardner PA, Gentili F, Snyderman CH (2015) Comparison of endoscopic endonasal and bifrontal craniotomy approaches for olfactory groove meningiomas: A matched pair analysis of outcomes and frontal lobe changes on MRI. *Journal of clinical neuroscience : official journal of the Neurosurgical Society of Australasia* 22:1733-1741
23. De Divitiis E, Esposito F, Cappabianca P, Cavallo LM, De Divitiis O (2008) Tuberculum sellae meningiomas: High route or low route? A series of 51 consecutive cases. *Neurosurgery* 62:556-562
24. de Divitiis E, Esposito F, Cappabianca P, Cavallo LM, de Divitiis O, Esposito I (2008) Endoscopic transnasal resection of anterior cranial fossa meningiomas. *Neurosurgical focus* 25:E8
25. Della Puppa A, D'Avella E, Rossetto M, Volpin F, Rustemi O, Gioffrè G, Lombardi G, Rolma G, Scienza R (2015) Open Transcranial Resection of Small (<35 mm) Meningiomas of the Anterior Midline Skull Base in Current Microsurgical Practice. *World neurosurgery* 84:741-750

26. DeMonte F, McDermott MW, Al-Mefty A (2011) *Al-Mefty's Meningiomas* second edition Thieme Medical Publishers, Stuttgart
27. DerSimonian R, Laird N (1986) Meta-analysis in clinical trials. *Control Clin Trials* 7:177-188
28. Fahlbusch R, Schott W (2002) Pterional surgery of meningiomas of the tuberculum sellae and planum sphenoidale: surgical results with special consideration of ophthalmological and endocrinological outcomes. *Journal of neurosurgery* 96:235-243
29. Fatemi N, Dusick JR, de Paiva Neto MA, Malkasian D, Kelly DF (2009) Endonasal versus supraorbital keyhole removal of craniopharyngiomas and tuberculum sellae meningiomas. *Neurosurgery* 64:269-284; discussion 284-266
30. Gadgil N, Thomas JG, Takashima M, Yoshor D (2013) Endoscopic resection of tuberculum sellae meningiomas. *Journal of neurological surgery. Part B, Skull base* 74:201-210
31. Gallagher MJ, Jenkinson MD, Brodbelt AR, Mills SJ, Chavredakis E (2016) WHO grade 1 meningioma recurrence: Are location and Simpson grade still relevant? *Clinical neurology and neurosurgery* 141:117-121
32. Ganna A, Dehdashti AR, Karabatsou K, Gentili F (2009) Fronto-basal interhemispheric approach for tuberculum sellae meningiomas; long-term visual outcome. *British journal of neurosurgery* 23:422-430
33. Gerlach R, Meyer A, Kellner G (2014) Comparison of 2D HD and 3D endoscopy during surgery for perisellar pathologies. *Experimental and Clinical Endocrinology and Diabetes* 122
34. Goel A, Muzumdar D (2005) Surgical strategy for tuberculum sellae meningiomas. *Neurosurgery Quarterly* 15:25-32
35. Hayhurst C, Sughrue ME, Gore PA, Bonney PA, Burks JD, Teo C (2016) Results with Expanded Endonasal Resection of Skull Base Meningiomas Technical Nuances and Approach Selection Based on an Early Experience. *Turkish neurosurgery* 26:662-670
36. Jang WY, Jung S, Jung TY, Moon KS, Kim IY (2012) The contralateral subfrontal approach can simplify surgery and provide favorable visual outcome in tuberculum sellae meningiomas. *Neurosurgical review* 35:601-607
37. Jang WY, Jung S, Jung TY, Moon KS, Kim IY (2013) Preservation of olfaction in surgery of olfactory groove meningiomas. *Clinical neurology and neurosurgery* 115:1288-1292
38. Jho HD, Ha HG (2004) Endoscopic Endonasal Skull Base Surgery: Part 1 - The Midline Anterior Fossa Skull Base. *Minimally Invasive Neurosurgery* 47:1-8

39. Jones SH, Iannone AF, Patel KS, Anchouche K, Raza SM, Anand VK, Schwartz TH (2016) The Impact of Age on Long-Term Quality of Life After Endonasal Endoscopic Resection of Skull Base Meningiomas. *Neurosurgery* 79:736-745
40. Khan OH, Anand VK, Schwartz TH (2014) Endoscopic endonasal resection of skull base meningiomas: the significance of a "cortical cuff" and brain edema compared with careful case selection and surgical experience in predicting morbidity and extent of resection. *Neurosurgical focus* 37:E7
41. Kitano M, Taneda M, Nakao Y (2007) Postoperative improvement in visual function in patients with tuberculom sellae meningiomas: results of the extended transsphenoidal and transcranial approaches. *Journal of neurosurgery* 107:337-346
42. Komotar RJ, Starke RM, Raper DM, Anand VK, Schwartz TH (2012) Endoscopic endonasal versus open transcranial resection of anterior midline skull base meningiomas. *World neurosurgery* 77:713-724
43. Koutourousiou M, Fernandez-Miranda JC, Stefko ST, Wang EW, Snyderman CH, Gardner PA (2014) Endoscopic endonasal surgery for suprasellar meningiomas: Experience with 75 patients: Clinical article. *Journal of neurosurgery* 120:1326-1339
44. Koutourousiou M, Fernandez-Miranda JC, Wang EW, Snyderman CH, Gardner PA (2014) Endoscopic endonasal surgery for olfactory groove meningiomas: outcomes and limitations in 50 patients. *Neurosurgical focus* 37:E8
45. Landeiro JA, Gonçalves MB, Guimarães RD, Klescoski J, Correa JLA, Lapenta MA, Máia O (2010) Tuberculom sellae meningiomas: Surgical considerations. *Arquivos de neuro-psiquiatria* 68:424-429
46. Leach P, Abou-Zeid AH, Kearney T, Davis J, Trainer PJ, Gnanalingham KK (2010) Endoscopic transsphenoidal pituitary surgery: evidence of an operative learning curve. *Neurosurgery* 67:1205-1212
47. Leveque S, Derrey S, Martinaud O, Gerardin E, Langlois O, Freger P, Hannequin D, Castel H, Proust F (2011) Superior interhemispheric approach for midline meningioma from the anterior cranial base. *Neuro-Chirurgie* 57:105-113
48. Li X, Liu M, Liu Y, Zhu S (2007) Surgical management of Tuberculom sellae meningiomas. *Journal of Clinical Neuroscience* 14:1150-1154
49. Li-Hua C, Ling C, Li-Xu L (2011) Microsurgical management of tuberculom sellae meningiomas by the frontolateral approach: surgical technique and visual outcome. *Clinical neurology and neurosurgery* 113:39-47
50. Liu HC, Qiu E, Zhang JL, Kang J, Li Y, Li Y, Jiang LB, Fu JD (2015) Surgical Indications of Exploring Optic Canal and Visual Prognostic Factors in Neurosurgical Treatment of Tuberculom Sellae Meningiomas. *Chinese medical journal* 128:2307-2311



51. Mahmoud M, Nader R, Al-Mefty O (2010) Optic canal involvement in tuberculoma sellae meningiomas: influence on approach, recurrence, and visual recovery. *Neurosurgery* 67:ons108-118; discussion ons118-109
52. Margalit N, Shahar T, Barkay G, Gonen L, Nossek E, Rozovski U, Kesler A (2013) Tuberculoma sellae meningiomas: Surgical technique, visual outcome, and prognostic factors in 51 cases. *Journal of Neurological Surgery, Part B: Skull Base* 74:247-257
53. Mathiesen T, Kihlström L (2006) Visual outcome of tuberculoma sellae meningiomas after extradural optic nerve decompression. *Neurosurgery* 59:570-575
54. Moher D, Liberati A, Tetzlaff J, Altman DG, Group P (2010) Preferred reporting items for systematic reviews and meta-analyses: the PRISMA statement. *Int J Surg* 8:336-341
55. Mukherjee S, Thakur B, Corns R, Connor S, Bhangoo R, Ashkan K, Gullan R (2015) resection of olfactory groove meningioma - a review of complications and prognostic factors. *British journal of neurosurgery* 29:685-692
56. Nakamura M, Roser F, Struck M, Vorkapic P, Samii M (2006) Tuberculoma sellae meningiomas: Clinical outcome considering different surgical approaches. *Neurosurgery* 59:1019-1028
57. Nakamura M, Struck M, Roser F, Vorkapic P, Samii M (2008) Olfactory groove meningiomas: clinical outcome and recurrence rates after tumor removal through the frontolateral and bifrontal approach. *Neurosurgery* 62:1224-1232
58. Nanda A, Ambekar S, Javalkar V, Sharma M (2013) Technical nuances in the management of tuberculoma sellae and diaphragma sellae meningiomas. *Neurosurgical focus* 35:E7
59. Nanda A, Bir SC, Maiti TK, Konar SK, Missios S, Guthikonda B (2016) Relevance of Simpson grading system and recurrence-free survival after surgery for World Health Organization Grade I meningioma. *Journal of neurosurgery*:1-11
60. Nanda A, Maiti TK, Bir SC, Konar SK, Guthikonda B (2016) Olfactory Groove Meningiomas: Comparison of Extent of Frontal Lobe Changes After Lateral and Bifrontal Approaches. *World neurosurgery* 94:211-221
61. Ogawa Y, Tominaga T (2012) Extended transsphenoidal approach for tuberculoma sellae meningioma-What are the optimum and critical indications? *Acta neurochirurgica* 154:621-626
62. Padhye V, Naidoo Y, Alexander H, Floreani S, Robinson S, Santoreneos S, Wickremesekera A, Brophy B, Harding M, Vrodos N, Wormald PJ (2012) Endoscopic endonasal resection of anterior skull base meningiomas. *Otolaryngology - Head and Neck Surgery (United States)* 147:575-582

63. Palani A, Panigrahi MK, Purohit AK (2012) Tuberculum sellae meningiomas: A series of 41 cases; surgical and ophthalmological outcomes with proposal of a new prognostic scoring system. *Journal of neurosciences in rural practice* 3:286-293
64. Pallini R, Fernandez E, Lauretti L, Doglietto F, D'Alessandris QG, Montano N, Capo G, Meglio M, Maira G (2015) Olfactory groove meningioma: report of 99 cases surgically treated at the Catholic University School of Medicine, Rome. *World neurosurgery* 83:219-231.e211-213
65. Pamir MN, Ozduman K, Belirgen M, Kilic T, Ozek MM (2005) Outcome determinants of pterional surgery for tuberculum sellae meningiomas. *Acta neurochirurgica* 147:1121-1130; discussion 1130
66. Park CK, Jung HW, Yang SY, Seol HJ, Paek SH, Kim DG (2006) Surgically treated tuberculum sellae and diaphragm sellae meningiomas: the importance of short-term visual outcome. *Neurosurgery* 59:238-243; discussion 238-243
67. Pepper JP, Hecht SL, Gebarski SS, Lin EM, Sullivan SE, Marentette LJ (2011) Olfactory groove meningioma: discussion of clinical presentation and surgical outcomes following excision via the subcranial approach. *The Laryngoscope* 121:2282-2289
68. Refaat MI, Eissa EM, Ali MH (2015) Surgical management of midline anterior skull base meningiomas: experience of 30 cases. *Turkish neurosurgery* 25:432-437
69. Romani R, Laakso A, Kangasniemi M, Niemela M, Hernesniemi J (2012) Lateral supraorbital approach applied to tuberculum sellae meningiomas: experience with 52 consecutive patients. *Neurosurgery* 70:1504-1518; discussion 1518-1509
70. Romani R, Lehecka M, Gaal E, Toninelli S, Celik O, Niemela M, Porras M, Jaaskelainen J, Hernesniemi J (2009) Lateral supraorbital approach applied to olfactory groove meningiomas: experience with 66 consecutive patients. *Neurosurgery* 65:39-52; discussion 52-33
71. Ruggeri AG, Cappelletti M, Fazzolari B, Marotta N, Delfini R (2016) Frontobasal Midline Meningiomas: Is It Right To Shed Doubt on the Transcranial Approaches? Updates and Review of the Literature. *World neurosurgery* 88:374-382
72. Schick U, Hassler W (2005) Surgical management of tuberculum sellae meningiomas: Involvement of the optic canal and visual outcome. *Journal of Neurology, Neurosurgery and Psychiatry* 76:977-983
73. Seol HJ, Park HY, Nam DH, Kong DS, Lee JI, Kim JH, Park K (2013) Clinical outcomes of tuberculum sellae meningiomas focusing on reversibility of postoperative visual function. *Acta neurochirurgica* 155:25-31
74. Simpson D (1957) The recurrence of intracranial meningiomas after surgical treatment. *Journal of neurology, neurosurgery, and psychiatry* 20:22-39

75. Slavik E, Radulovic D, Tasic G (2007) Olfactory groove meningiomas. *Acta chirurgica Iugoslavica* 54:59-62
76. Spektor S, Valarezo J, Fliss DM, Gil Z, Cohen J, Goldman J, Umansky F (2005) Olfactory groove meningiomas from neurosurgical and ear, nose, and throat perspectives: approaches, techniques, and outcomes. *Neurosurgery* 57:268-280; discussion 268-280
77. Terasaka S, Asaoka K, Kobayashi H, Yamaguchi S (2011) Anterior interhemispheric approach for tuberculum sellae meningioma. *Neurosurgery* 68:84-88; discussion 88-89
78. Tuna H, Bozkurt M, Ayten M, Erdogan A, Deda H (2005) Olfactory groove meningiomas. *Journal of clinical neuroscience : official journal of the Neurosurgical Society of Australasia* 12:664-668
79. Wang Q, Lu XJ, Ji WY, Yan ZC, Xu J, Ding YS, Zhang J (2010) Visual outcome after extended endoscopic endonasal transsphenoidal surgery for tuberculum sellae meningiomas. *World neurosurgery* 73:694-700
80. Wells G, Shea B, O'Connell D, Peterson J, Welch V, Losos M, Tugwell P The Newcastle-Ottawa Scale (NOS) for assessing the quality of nonrandomised studies in meta-analyses. [http://www.medicine.mcgill.ca/rtamblyn/Readings/The Newcastle - Scale for assessing the quality of nonrandomised studies in meta-analyses.pdf](http://www.medicine.mcgill.ca/rtamblyn/Readings/The%20Newcastle%20-%20Scale%20for%20assessing%20the%20quality%20of%20nonrandomised%20studies%20in%20meta-analyses.pdf). Accessed October 13 2016
81. Wilk A, G ZI, Witek P, Koziarski A (2015) Outcome assessment after surgical treatment of tuberculum sellae meningiomas-a preliminary report. *Turkish neurosurgery* 26:824-832
82. Zhou H, Wu Z, Wang L, Zhang J (2016) Microsurgical Treatment of Tuberculum Sellae Meningiomas with Visual Impairments: A Chinese Experience of 56 Cases. *Turkish neurosurgery* 26:48-53

Table 3.5: Search syntax

**Pubmed (09-12-2016) from 2004**

**(Tuberculum[Title/Abstract] OR Suprasellar[Title/Abstract] OR sellar[Title/Abstract] OR sella[Title/Abstract] OR sellae[Title/Abstract] OR cribriform[Title/Abstract] OR Planum[Title/abstract] OR Sphenoid\*[Title/abstract] OR olfactory[Title/abstract] OR sphenoid bone[MeSH Terms] OR anterior skull base[Title/Abstract] OR "Cranial Fossa, Anterior"[Mesh]) AND (Meningioma\*[Title/Abstract] OR meningioma[MeSH Terms] OR meningeoma\*[Title/abstract] OR meningeal neoplasms[MeSH Terms] OR TSM[Title/abstract] OR OGM[Title/abstract] OR PSM[Title/abstract])**

**Embase (09-12-2016) from 2004**

**(Olfactory:ab,ti OR tuberculum:ab,ti OR suprasellar:ab,ti OR sellar:ab,ti OR sella:ab,ti OR Sellae:ab,ti OR planum:ab,ti OR cribriform:ab,ti OR sphenoid\*:ab,ti OR 'sphenoid'/exp OR 'anterior skull base':ab,ti) AND (meningioma\*:ab,ti OR 'meningeoma'/exp OR meningeoma\*ab,ti OR TSM:ab,ti OR OGM:ab,ti OR PSM:ab,ti)**