

# SCIENTIFIC REPORTS



OPEN

## An Arabidopsis mutant with high operating efficiency of Photosystem II and low chlorophyll fluorescence

Niels van Tol<sup>1,2</sup>, Martijn Rolloos<sup>1</sup>, Dieuwertje Augustijn<sup>3</sup>, A. Alia<sup>3</sup>, Huub J. de Groot<sup>3</sup>, Paul J. J. Hooykaas<sup>1</sup> & Bert J. van der Zaal<sup>1</sup>

The overall light energy to biomass conversion efficiency of plant photosynthesis is generally regarded as low. Forward genetic screens in *Arabidopsis* have yielded very few mutants with substantially enhanced photochemistry. Here, we report the isolation of a novel *Arabidopsis* mutant with a high operating efficiency of Photosystem II ( $\varphi$ PSII) and low chlorophyll fluorescence from a library of lines harboring T-DNA constructs encoding artificial transcription factors. This mutant was named **Low Chlorophyll Fluorescence 1 (LCF1)**. Only a single T-DNA insertion was detected in LCF1, which interrupted the expression of the full length mRNA of the gene *At4g36280 (MORC2)*. We demonstrate that the high  $\varphi$ PSII and low levels of chlorophyll fluorescence were due to a decrease in PSII:PSI ratio. Although LCF1 plants had decreased rosette surface area and biomass under normal growth conditions, they contained more starch per gram fresh weight. The growth defect of LCF1 was alleviated by low light and short day conditions, and growth could even be enhanced after a period of dark-induced senescence, showing that the plant can utilize its excess photosynthetic conversion capacity as a resource when needed.

Photosynthesis is the process that harvests energy from sunlight and fixes it as chemical energy. The light is absorbed by chlorophyll molecules that are associated with the antenna complexes of Photosystems I and II (PSI and PSII) in the thylakoid membranes of chloroplasts, which results in the photoexcitation and subsequent charge separation of the reaction center chlorophylls P700 and P680, respectively. The water-plastoquinone A oxidoreductase activity of PSII, referred to as photochemistry, initiates a linear flow of photoexcited electrons from PSII to the final electron acceptor NADP, thus generating NADPH, and drives the synthesis of ATP by chemiosmotic coupling. NADPH and ATP are used in the Calvin-Benson cycle for CO<sub>2</sub> fixation by the enzyme complex RuBisCo. The resulting carbohydrate product is partitioned to different parts and processes of the plant. Photosynthesis is therefore considered the driving force behind plant productivity. However, the overall light energy to biomass conversion efficiency of photosynthesis is generally regarded as remarkably low<sup>1</sup>. Photosynthesis has therefore become a primary target for the improvement of crop yield<sup>2</sup>, and the genetic modification of photosynthesis has received a considerable amount of attention<sup>3–6</sup>.

Apart from photochemistry, photoexcitation events in PSII reaction centers can lead to the emission of chlorophyll fluorescence (CF), and to the dissipation of excess excitation energy through various processes that are together named non-photochemical quenching (NPQ)<sup>7</sup>. CF can relatively easily be observed and quantified with a fluorescence camera upon illumination of a plant with actinic light. Photochemistry and NPQ are both quenchers of CF, and changes in the rates of photochemistry and NPQ are therefore proportionally reflected by changes in CF levels. CF imaging with Pulse-Amplitude-Modulation (PAM) equipment therefore allows for the relatively accurate quantification of photochemistry, the rate of linear electron transport and of NPQ<sup>8</sup>. In addition, CF imaging allows for the relatively easy quantification of the maximum quantum efficiency of PSII photochemistry ( $F_v/F_m$ ) and of the operating light use efficiency of Photosystem II ( $\varphi$ PSII)<sup>8</sup>. The latter parameter is considered

<sup>1</sup>Institute of Biology Leiden, Faculty of Science, Leiden University, Sylviusweg 72, 2333 BE, Leiden, The Netherlands.

<sup>2</sup>BioSolar Cells, P.O. Box 98, 6700 AB, Wageningen, The Netherlands. <sup>3</sup>Leiden Institute of Chemistry, Faculty of Science, Leiden University, Einsteinweg 55, 2333 CC, Leiden, The Netherlands. Correspondence and requests for materials should be addressed to B.J.v. (email: [b.j.v.d.zaal@biology.leidenuniv.nl](mailto:b.j.v.d.zaal@biology.leidenuniv.nl))

to be an accurate measure for linear electron transport rate and the rate of CO<sub>2</sub> fixation in both C3 and C4 plant species<sup>8</sup>. In principle, CF imaging can thus be used to accurately estimate the overall photosynthetic performance of plants, thereby making the isolation of photosynthesis mutants from populations of plants a feasible approach.

Several published and ongoing studies have used  $\varphi$ PSII as a means of assessing variation in the photosynthetic efficiency of natural and mutant Arabidopsis accessions. For the natural Arabidopsis accessions these studies have been carried out on a large scale<sup>9,10</sup>, but very little natural variation in  $\varphi$ PSII has been found<sup>10</sup>. Surprisingly, no large scale mutant screens with  $\varphi$ PSII as a selection criterion have been described in literature. Very recently, after first using  $F_v/F_m$  as a selection criterion, insertion mutants of the Arabidopsis gene *HPE1* (At1g70200) were described which exhibited substantially higher  $\varphi$ PSII than Col-0<sup>11</sup>. To our knowledge, these are the only recessive knock-out mutants with this phenotype that have been described in literature.

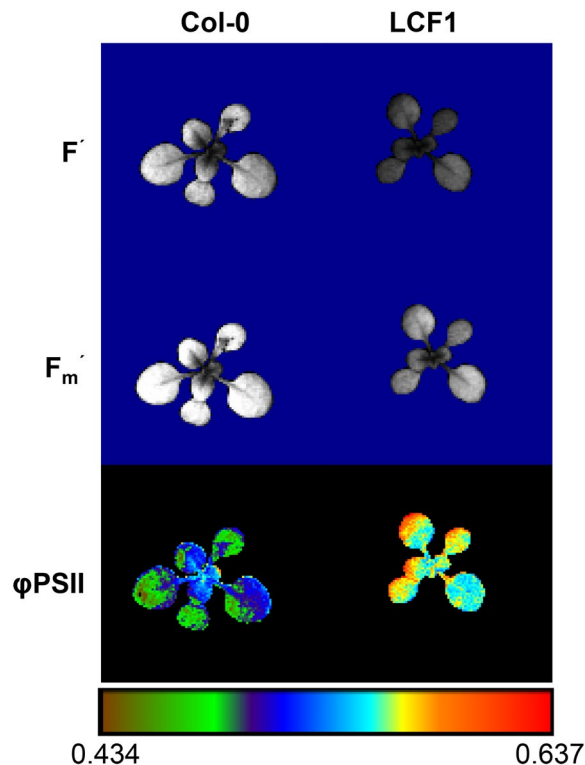
In our lab, we have established zinc finger artificial transcription factor (ZF-ATF)-mediated genome interrogation<sup>12</sup> as a tool for generating novel Arabidopsis mutants with enhanced traits<sup>13–15</sup>. We have used genome interrogation to investigate whether an innate capacity to perform more efficient photosynthesis can be artificially invoked in Arabidopsis by the large scale distortion of gene expression patterns. In our setup, ZF-ATFs consist of an array of three zinc fingers (3F) fused to the transcriptional activator protein VP16<sup>13</sup>. Each ZF recognizes a cognate 3 base pair (bp) 5'-GNN-3' consensus DNA sequence ('N' can be any of the DNA bases)<sup>16</sup>. There are 16 possible 5'-GNN-3' binding ZFs, which can theoretically be assembled into 256 two finger (2F) and 4096 3F combinations. Arabidopsis plants are transformed with the artificial 3F-VP16 encoding gene construct under control of the promoter of the Arabidopsis *RPS5a* gene<sup>17</sup>, which is predominantly active in embryonic and meristematic tissue. Due to the relatively short DNA recognition sequence, each 3F-VP16 fusion on average has approximately 1000 binding sites in the 130 Mbp Arabidopsis genome, where it can influence the expression of nearby genes *in trans* and in a dominant manner through the activity of VP16. Introducing a single artificial gene in an otherwise wild type genome thus allows for the drastic perturbation of genome-wide gene expression patterns, and the potential induction of (novel) traits of interest.

In the present study, we have screened a library of Arabidopsis lines harboring 3F-VP16 encoding T-DNA constructs for lines with enhanced  $\varphi$ PSII. Through this screen, a novel recessive Arabidopsis mutant with high  $\varphi$ PSII and low CF was isolated, which was named Low Chlorophyll Fluorescence 1 (LCF1). The phenotypes of LCF1 were linked to a single T-DNA insertion in the locus At4g36280 (*MORC2*). Furthermore, we describe the CF and growth characteristics of LCF1, and propose a model integrating these data.

## Results

**Genome interrogation library construction and isolation of LCF1.** In order to investigate whether genome interrogation can be used to generate novel plant lines with enhanced photosynthetic properties, a library of Arabidopsis plant lines harboring 3F-VP16 encoding T-DNA constructs was screened for significant changes in  $\varphi$ PSII compared to the wild type Col-0 using CF imaging. Briefly, the genome interrogation library was constructed by floral dip transformation of Col-0 plants with a library of pRF-VP16-Kana binary vectors harboring these T-DNA constructs<sup>13</sup>. The library consisted of seeds that were harvested from primary transformants (T1), and are therefore referred to as the second generation of transformants (T2). Similarly, the progeny of the secondary generation of transformants is referred to as the tertiary generation (T3), and so on. The library had approximately 3500 different genome interrogation constructs represented as T-DNA insertions in a total of 4278 lines. Using 200  $\mu\text{mol m}^{-2} \text{s}^{-1}$  of actinic light, a population of genome interrogation T2 plants was screened for  $\varphi$ PSII values that deviated strongly from Col-0. One mutant individual with high  $\varphi$ PSII, low steady state CF and low maximal CF in the light was isolated (Fig. 1). As the T3 offspring of this individual did not segregate for the phenotype, the mutant plant line was named LCF1. Through PCR analysis and sequencing with T-DNA specific primers, the T-DNA insert in LCF1 was demonstrated to encode a ZF-ATF with a 3F DNA binding domain theoretically recognizing the 9 bp sequence GCG-GTG-GCG. We transformed Col-0 plants with a 3F-VP16 encoding T-DNA construct which was reconstituted with the 3F encoding sequence identified in LCF1, but these did not display high  $\varphi$ PSII, demonstrating that the LCF1 phenotype was not triggered *in trans* by the 3F-VP16 fusion. In addition, when LCF1 ( $\delta$ ) was crossed with Col-0 ( $\eta$ ) only one quarter of their F2 offspring displayed the high  $\varphi$ PSII phenotype (Fig. S1), indicative of a recessive mutation. Altogether these observations showed that expression of the 3F-VP16 fusion protein encoded by the T-DNA construct is not sufficient to induce the LCF1 phenotype and that the phenotypical characteristics of LCF1 are not a direct consequence of genome interrogation. Rather, the observations suggested that they result from a recessive mutation, possibly caused by a T-DNA insertion.

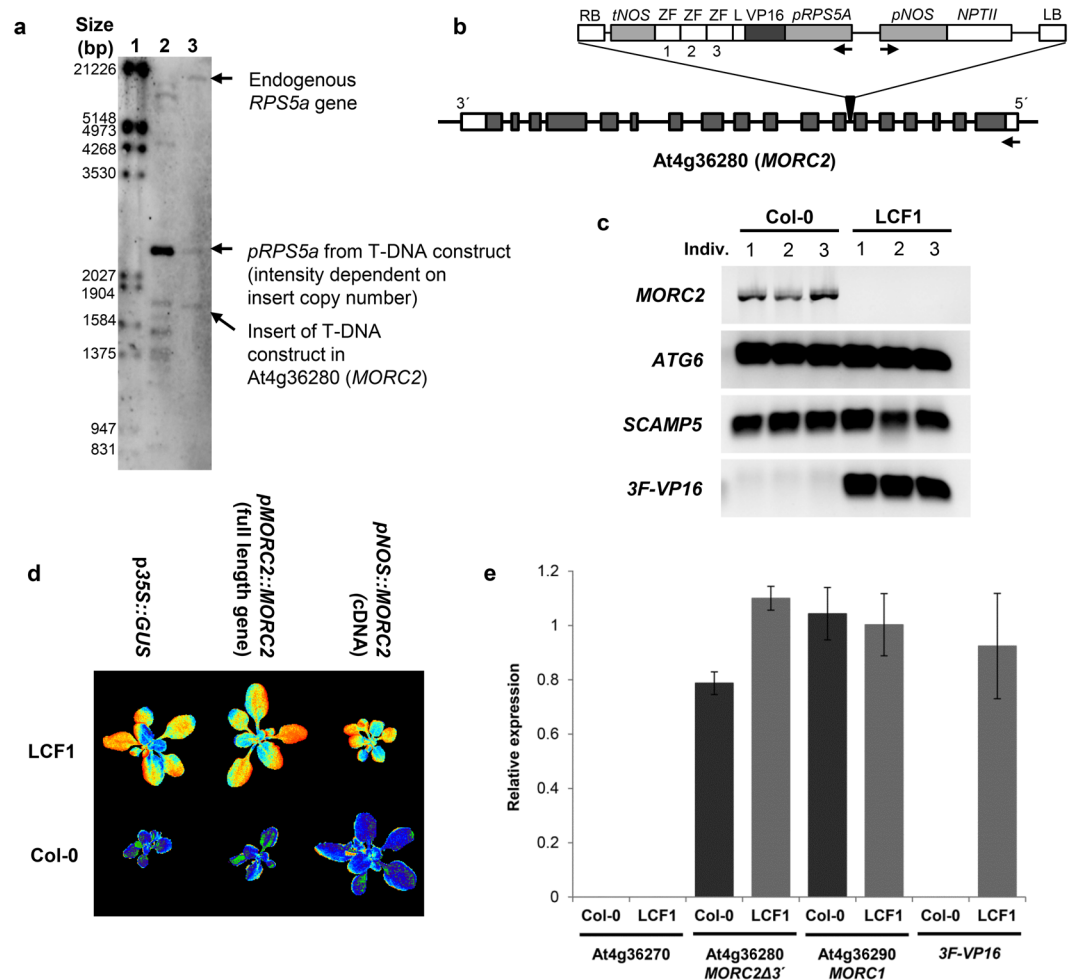
**Genetic analysis of LCF1.** By means of Southern blotting, only one copy of the 3F-VP16 encoding T-DNA construct was detected in the genome of LCF1 (Fig. 2a). By means of Thermal Asymmetric Interlaced PCR (TAIL-PCR) the integration site of the T-DNA construct (Fig. 2b) was demonstrated to be the 6<sup>th</sup> intron of the gene *MORC2* (At4g36280; chromosomal position 17165331–17169375 bp), which was confirmed by PCR analysis with a combination of T-DNA and *MORC2* specific primers. While full length *MORC2* mRNA was readily detected by RT-PCR analysis in Col-0 plants, no such transcripts were detected in LCF1 plants (Fig. 2c). In that respect, insertion of the 3F-VP16 encoding T-DNA construct in *MORC2* might have resulted in a functional knock-out of the gene. As expected, mRNA corresponding to the 3F-VP16 fusion protein encoded by the T-DNA insert was expressed in LCF1 (Fig. 2c and e). When the LCF1 phenotype would be a *MORC2* knock-out, we reasoned that it should be possible to find plants with a high  $\varphi$ PSII phenotype among the progeny of the 15 available SALK T-DNA knock-out lines for *MORC2* of the Nottingham Arabidopsis Stock Center (Table 1). However, no LCF1-like phenotypes were detected in any of the SALK lines, indicating that a knock-out of *MORC2* is not sufficient to mimic LCF1. In addition to that,  $\varphi$ PSII of LCF1 plants could not be restored to wild type levels by ectopic overexpression of the full length *MORC2* gene, nor by a recombinant version containing the complete



**Figure 1.** Overview of the chlorophyll fluorescence (CF) characteristics of Col-0 and LCF1 plants. False color images of steady state CF ( $F'$ ), maximal CF ( $F_m'$ ) and the operating light use efficiency of Photosystem II ( $\phi$ PSII), all at  $200 \mu\text{mol m}^{-2} \text{s}^{-1}$  actinic light.

coding sequence (Fig. 2d). To establish genetic linkage between the phenotype of LCF1 and *MORC2*, LCF1 was crossed with the accession Ler-0 to establish a mapping population of F2 hybrid plants. From this population, 110 individuals with high  $\phi$ PSII and low CF were genotyped by PCR analysis using primers for the indel marker 4-AL022141-9227, which is located close to *MORC2* at the chromosomal position 17148559 bp, a physical distance of less than 20,000 bp and thus within a genetic distance of 1 cM. Only two out of 220 chromosomes were found to be recombinant, indicating that the genetic element linked to the phenotype of LCF1 was indeed located very close to this marker, making the T-DNA insertion locus in *MORC2* a prime candidate. By RT-qPCR analysis it was further investigated whether the T-DNA insertion in *MORC2* somehow modified expression of the directly flanking genes, At4g36270 and At4g36290 (*MORC1*). For *MORC1*, no significant differences compared to Col-0 were observed and the non-expressed gene At4g36270 was also not expressed in LCF1 (Fig. 2e). By using RT-qPCR analysis with primers specific for the 5' part of the *MORC2* transcript, upstream of the T-DNA insertion (Fig. 2b), we found that a truncated *MORC2* transcript is still present in LCF1 (Fig. 2e). It might be that the LCF1 phenotype is triggered by the expression of a truncated *MORC2* protein, but the recessive nature of the mutation would then suggest that the phenotype is dosage dependent and becomes apparent only in the homozygous state. Alternatively, another recessive mutation might have occurred close by.

**LCF1 plants have high  $\phi$ PSII and low chlorophyll fluorescence.** The  $\phi$ PSII of LCF1 plants was typically 10–15% higher than that of Col-0 plants at  $200 \mu\text{mol m}^{-2} \text{s}^{-1}$  of actinic light (Fig. 3a) at every time point in rosette development. As our initial CF measurements were only performed at standard light conditions ( $200 \mu\text{mol m}^{-2} \text{s}^{-1}$  PAR), we also investigated the response of LCF1 plants to other light intensities. To this end,  $\phi$ PSII of Col-0 and LCF1 plants was quantified at a range of different light intensities with long adaptation steps to the actinic light, to ensure that the physiological responses of the plants to the changes in light intensity were reflected by  $\phi$ PSII. LCF1 plants had a significantly higher  $\phi$ PSII than Col-0 at every light intensity (Fig. 3b). As we had observed low steady state CF levels in LCF1 (Fig. 1), we were also interested in the dynamics of CF induction, the Kautsky effect<sup>18</sup>. To this end, induction was examined by quantifying the fluorescence of dark adapted Col-0 and LCF1 plants upon illumination with  $50 \mu\text{mol m}^{-2} \text{s}^{-1}$  actinic light. Although the time resolution of our CF imaging setup did not allow for quantification of the Kautsky effect on a micro to millisecond time scale, the fluorescence induction kinetics of LCF1 were clearly different from those of Col-0 (Fig. 3c). The CF of LCF1 was consistently lower over the whole course of both the fast and slow transients of induction (referred to in literature as the Origin, Peak, Steady state (OPS) transient and the Steady State, Maximum, Terminal state (SMT) transient, respectively<sup>19</sup>), which can both be observed at a timescale of seconds. This suggested that LCF1 plants have higher photochemical quenching activity and more electron transport than Col-0 plants, resulting in a substantial decrease in CF from the origin of induction onwards.

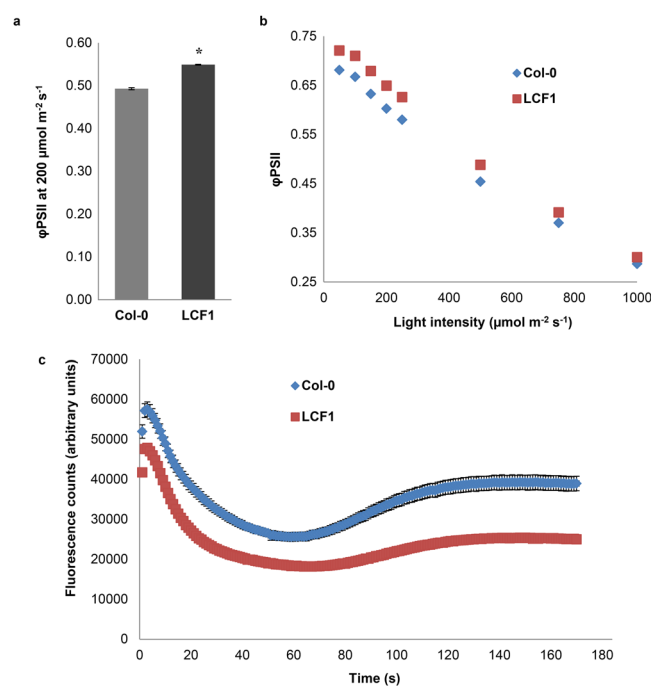


**Figure 2.** Genetic analysis of LCF1. **(a)** Southern blot on *NcoI* digested genomic DNA (gDNA) of empty vector control plants (Col-0 transformed with pRF-VP16-Kana not containing a 3F fragment; lane 2) and LCF1 (lane 3). Lane 1 contains DIG-labelled DNA ladder. The DIG-labelled probe was expected to hybridize with fragments of the promoter of the endogenous *RPS5a* gene (10695 bp fragment), the *RPS5a* promoter (*pRPS5a*) from the T-DNA construct (2590 bp fragment with intensity depending on the copy number of the insert), and the (3F)-VP16 fusion encoding part of each T-DNA insert in the genome (fragments of  $\geq \sim 1500$  bp for LCF1 and  $\geq \sim 800$  bp for the empty vector control without 3F). **(b)** Map of the 3F-VP16 encoding T-DNA construct in *MORC2* (At4g36280) of LCF1. *MORC2* is presented to scale. Exons are presented as grey boxes. 5' and 3' untranslated regions (UTRs) are presented as white boxes. The T-DNA insert is not presented to scale. **(c)** RT-PCR analysis of *MORC2* expression in Col-0 and LCF1 plants. The genes *ATG6* (At3g61710) and *SCAMP5* (At1g32050) serve as a controls for gene expression. Expression of the 3F-VP16 construct in LCF1 was verified as a positive control. **(d)** False color  $\phi$ PSII images of Col-0 and LCF1 plants (T1 generation; obtained through selection with PPT) harboring T-DNA constructs with either the *GUS* gene under control of the CaMV 35S promoter (*p35S::GUS*), the full length genomic sequence of *MORC2* under control of its own promoter and terminator sequences (*pMORC::MORC2*) to assay for complementation, or the cDNA encoding *MORC2* under control of the *NOS* promoter and terminator sequences (*pNOS::MORC2*) to assay for complementation. The variation in size among the transformants was due to herbicide selection and subsequent transfer from selection medium to soil. **(e)** RT-qPCR analysis of the expression of the 5' end of *MORC2* (*MORC2* $\Delta$ 3') and of the two neighboring genes At4g36270 and At4g36290 (*MORC1*). Expression of the 3F-VP16 construct in LCF1 was quantified as a positive control. Relative expression values were obtained by normalizing to the expression values of the genes *ATG6* and *SCAMP5*. Error bars represent SEM values ( $n = 4$ ). The presented data are the average of two technical replicates.

To further examine the role of photochemical quenching in the high  $\phi$ PSII and low CF phenotype of LCF1, light response curves were made for both the maximum efficiency of PSII in the light ( $F_v'/F_m'$ ) and the PSII efficiency factor ( $F_q'/F_v'$ ), which is a measure for the fraction of all PSII reaction centers that are open and thereby relates the maximum efficiency to the operating efficiency  $\phi$ PSII<sup>8</sup>. An increase in the maximum efficiency of PSII in the light might mean that LCF1 has intrinsically more efficient PSII reaction centers, whereas an increase in photochemical quenching is in line with a larger fraction of PSII reaction centers performing photochemistry in LCF1. There were no significant differences in the  $F_v'/F_m'$  values of LCF1 compared to Col-0 (Fig. 4a), but the  $F_q'/F_v'$

NASC Code	Accession name
N521267	SALK_021267
N572456	SALK_072456
N572774	SALK_072774
N585402	SALK_085402
N585404	SALK_085404
N589534	SALK_089534
N623179	SALK_123179
N635895	SALK_135895
N636332	SALK_136332
N636502	SALK_136502
N636598	SALK_136598
N636599	SALK_136599
N645794	SALK_145794
N669832	SALK_072774C
N674058	SALK_021267C

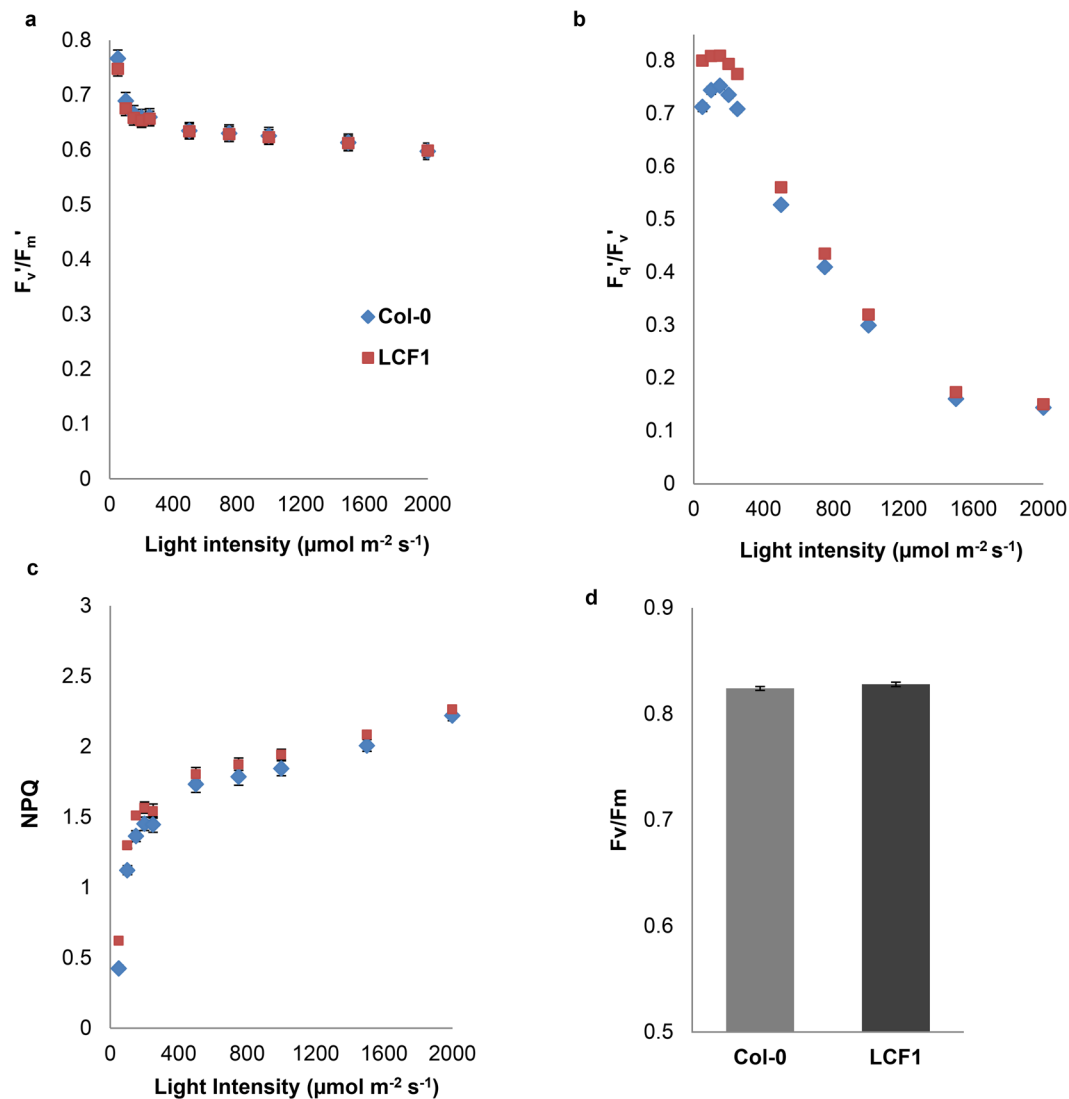
**Table 1.** The SALK T-DNA insertion lines for the genomic locus At4g36280 that were used in this study.



**Figure 3.** Quantification of the operating efficiency of Photosystem II ( $\phi\text{PSII}$ ) of Col-0 and LCF1 plants using CF imaging. **(a)** Quantification of  $\phi\text{PSII}$  at standard light conditions of  $200 \mu\text{mol m}^{-2} \text{s}^{-1}$  (14 days after germination; 30 s adaptation steps to the actinic light). **(b)** Quantification of  $\phi\text{PSII}$  at a range of different light intensities (19 days after germination; 15 minute adaptation steps to the actinic light). Asterisks (\*) represent a significant difference with Col-0 ( $p < 0.05$ ). Error bars represent SEM values ( $n = 6$  per genotype) and are visible only when exceeding the data points. **(c)** Chlorophyll fluorescence induction traces of Col-0 plants and LCF1 plants. Plants were dark adapted at 14 days after germination for  $\geq 30$  min and placed in the imaging chamber. Subsequently, actinic light of  $50 \mu\text{mol m}^{-2} \text{s}^{-1}$  was switched on and the counts of fluorescence were quantified. Error bars represent SEM values ( $n = 12$  per genotype) and are visible only when exceeding the data points.

$F_v'$  values were significantly higher (Fig. 4b). In addition, there were no statistically significant changes in NPQ (Fig. 4c) and  $F_v/F_m$  (Fig. 4d). Altogether, these results demonstrated that the increase in  $\phi\text{PSII}$  of LCF1 plants is due to an increase in the electron transport of PSII reaction centers.

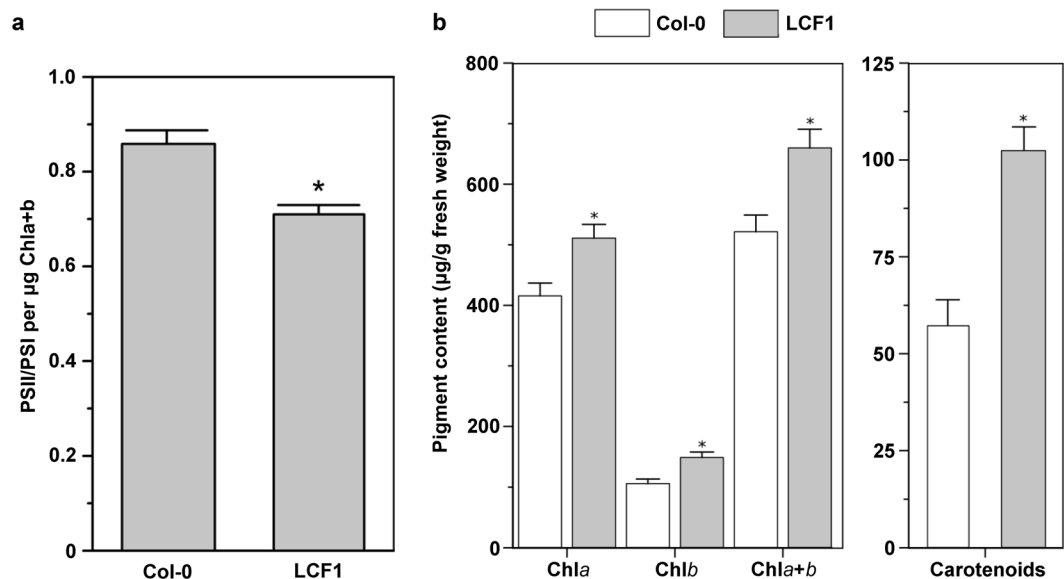
**The increase in  $\phi\text{PSII}$  and the low levels of chlorophyll fluorescence of LCF1 are due to a shift in PSII-PSI ratio.** All of the CF measurements described above were performed on LCF1 plants that were performing steady state photosynthesis at non-stressful light conditions. However, these conditions are not representative of field conditions, where plants are exposed to a range of light conditions, also fluctuating between low



**Figure 4.** Quantification of (a) the maximum efficiency of Photosystem II in the light ( $F_v'/F_m'$ ), (b) the coefficient of photochemical quenching ( $F_q'/F_v'$ ) and (c) NPQ of Col-0 and LCF1 plants at different light intensities (19 days after germination). Response curves were made by adapting the plants to every actinic light intensity for 30 s, followed by a saturating pulse. (d) Quantification of the maximum quantum efficiency of PSII photochemistry ( $F_v/F_m$ ) of dark-adapted Col-0 and LCF1 plants (19 days after germination). Error bars represent SEM values ( $n = 12$  per genotype) and are visible only when exceeding the data points.

and high intensity. To examine the response of LCF1 plants to these biologically more relevant conditions, Col-0 and LCF1 plants were exposed to either low ( $20 \mu\text{mol m}^{-2} \text{s}^{-1}$ ), high ( $1000 \mu\text{mol m}^{-2} \text{s}^{-1}$ ), very high ( $2000 \mu\text{mol m}^{-2} \text{s}^{-1}$ ) or fluctuating ( $50 \mu\text{mol m}^{-2} \text{s}^{-1}$  for 5 min, followed by  $500 \mu\text{mol m}^{-2} \text{s}^{-1}$  for 1 min) actinic light intensities for a period of 1 h, before, during and after which  $\varphi\text{PSII}$  was quantified every 15 min (Fig. S2). From these response curves it could be concluded that  $\varphi\text{PSII}$  was consistently higher in LCF1 compared to Col-0, regardless of the light intensity. The relative increase in  $\varphi\text{PSII}$  during light stress treatment compared to Col-0 varied from approximately 6% to 10% (Fig. S2). LCF1 plants were also able to either partially or almost fully recover from every light stress treatment when they were again exposed to  $200 \mu\text{mol m}^{-2} \text{s}^{-1}$  of actinic light (Fig. S2).

To further investigate the high  $\varphi\text{PSII}$  of LCF1, we determined the PSII:PSI ratio of Col-0 and LCF1 plants. This ratio was significantly lower for LCF1 ( $0.71 \pm 0.07$ ) than for Col-0 ( $0.86 \pm 0.10$ ) at  $p < 0.001$  (Fig. 5a). These observations are in line with the notion that a lower PSII:PSI ratio points towards a higher quantum yield of photosynthesis<sup>20</sup>. As CF levels are for the largest part attributable to PSII fluorescence<sup>8</sup>, a lower PSII:PSI ratio can thus also explain why LCF1 exhibits lower CF, as electron transfer capacity through PSI downstream of PSII will not be limiting. These observations were corroborated by changes in photosynthetic pigment composition, with LCF1 plants having 41% more chlorophyll *b* (Fig. 5a) and 79% more carotenoids (Fig. 5b) than Col-0 on a fresh weight basis. LCF1 plants also had 23% more chlorophyll *a* than Col-0 (Fig. 5a), indicating an increase in the size of PSII antennae<sup>21</sup>.



**Figure 5.** (a) The PSII-PSI ratio of Col-0 and LCF1 plants at 28 days after germination, determined by fluorescence spectrophotometry. Error bars represent SEM values ( $n = 7$  per genotype). (b) Photosynthetic pigment content of leaves of Col-0 and LCF1 plants. The chlorophyll and total carotenoid contents were determined spectrophotometrically. Asterisks (\*) represent a significant difference with Col-0 after one-way ANOVA ( $p < 0.05$ ). Error bars represent SEM values ( $n = 7$  per genotype).

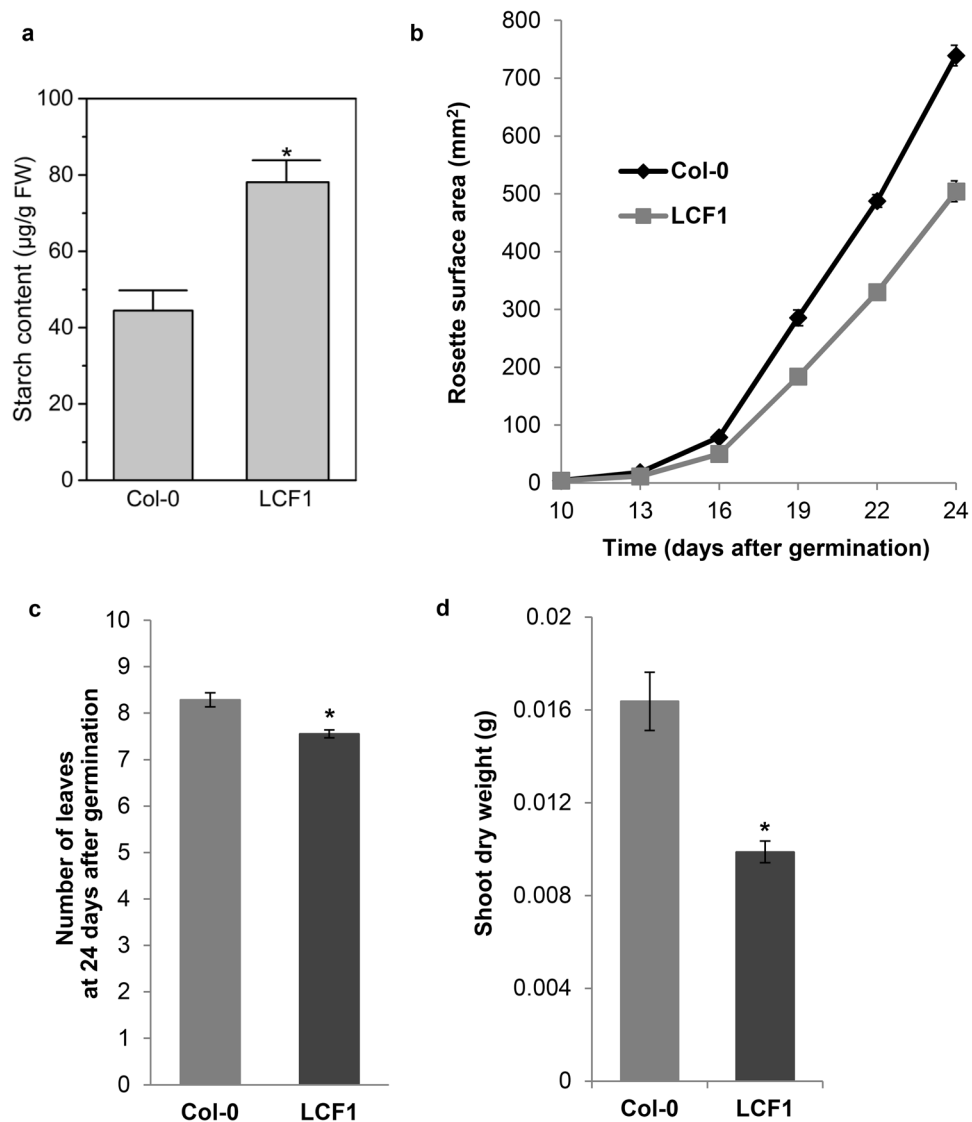
**LCF1 plants accumulate more starch despite having reduced growth.** As LCF1 has high  $\phi$ PSII, it might be expected to have increased overall photosynthetic performance and to accumulate more biomass than Col-0 plants. We firstly investigated whether LCF1 plants accumulated more starch than Col-0. Indeed, LCF1 was found to have 76% more starch available in the rosette leaves compared to Col-0 (Fig. 6a). These data are well in line with the observation of a strong correlation between high linear electron transport and elevated carbohydrate content that was reported recently for the *Arabidopsis hpe1* mutants<sup>11</sup>. In addition, we quantified the rosette surface area (RSA) of Col-0 plants and LCF1 plants throughout development. RSA was used as a proxy for biomass, because these two parameters are strongly correlated in *Arabidopsis*<sup>22</sup>. In contrast with the high level of starch, we found LCF1 plants to be consistently smaller throughout development than Col-0 (Fig. 6b). LCF1 plants had an approximately 32% smaller RSA than Col-0 plants at 24 days after germination ( $p < 0.001$ ), which could partly be attributed to a decrease in the number of leaves (Fig. 6c). In concurrence with these observations, LCF1 plants accumulated significantly less dry weight (Fig. 6d) than Col-0 plants.

To examine whether the growth reduction also occurred at light conditions other than standard conditions (12 h photoperiod at  $200 \mu\text{mol m}^{-2} \text{s}^{-1}$  PAR light; mercury lamps), Col-0 and LCF1 plants were grown at short day and low light conditions (8 h photoperiod at  $50 \mu\text{mol m}^{-2} \text{s}^{-1}$  PAR light; fluorescent tubes), thereby reducing the irradiance on the plants and lowering photosynthetic rate<sup>23</sup>. At these conditions, there were no significant differences between LCF1 and Col-0 in terms of RSA (Fig. S3A and B) and biomass (Fig. S3C). However, when they were supplemented with 2000 ppm of  $\text{CO}_2$  to stimulate photosynthesis<sup>24,25</sup>, there was again a reduction in growth over time (Fig. S3D). Taken together, these observations indicated that the growth of LCF1 plants is negatively correlated with photosynthetic rate. This was further investigated by first growing Col-0 and LCF1 plants under standard light conditions up till 21 days after germination and then transferring them to complete darkness, a treatment known to induce senescence, accompanied by large-scale pigment degradation and depletion of photosynthetic carbon<sup>26</sup>. Regardless of the number of days of dark incubation, LCF1 plants maintained a significantly higher  $\phi$ PSII than Col-0 plants (Fig. 7a), and regained their  $\phi$ PSII values from before dark-induced senescence after 14 days of recovery in the light (Fig. 7b). Remarkably, LCF1 plants had a significantly larger RSA than Col-0 plants after recovery in the light (Fig. 7c), indicating that the normal growth impediment of LCF1 plants was alleviated after the period of darkness and that the higher  $\phi$ PSII now correlated with enhanced growth.

## Discussion

In this study we described the isolation and phenotypic characterization of the novel *Arabidopsis* mutant line LCF1. Genetic analysis of LCF1 showed that the mutation causative for high  $\phi$ PSII and low CF was recessive and closely linked to a single T-DNA insertion within the *MORC2* gene (At4g36280). The enhanced photochemical properties of LCF1 were combined with a significant decrease in PSII:PSI ratio and an increase in carotenoid content. While LCF1 plants had stunted growth at standard conditions, they accumulated relatively more starch. In addition, the growth of LCF1 plants was restored to wild type levels at low light and short day conditions, and could be enhanced after a period of dark induced senescence.

To our knowledge, no other screens for *Arabidopsis* mutants with  $\phi$ PSII as a selection criterion have been reported in literature. There are, however, a large number of publications available which describe forward genetic

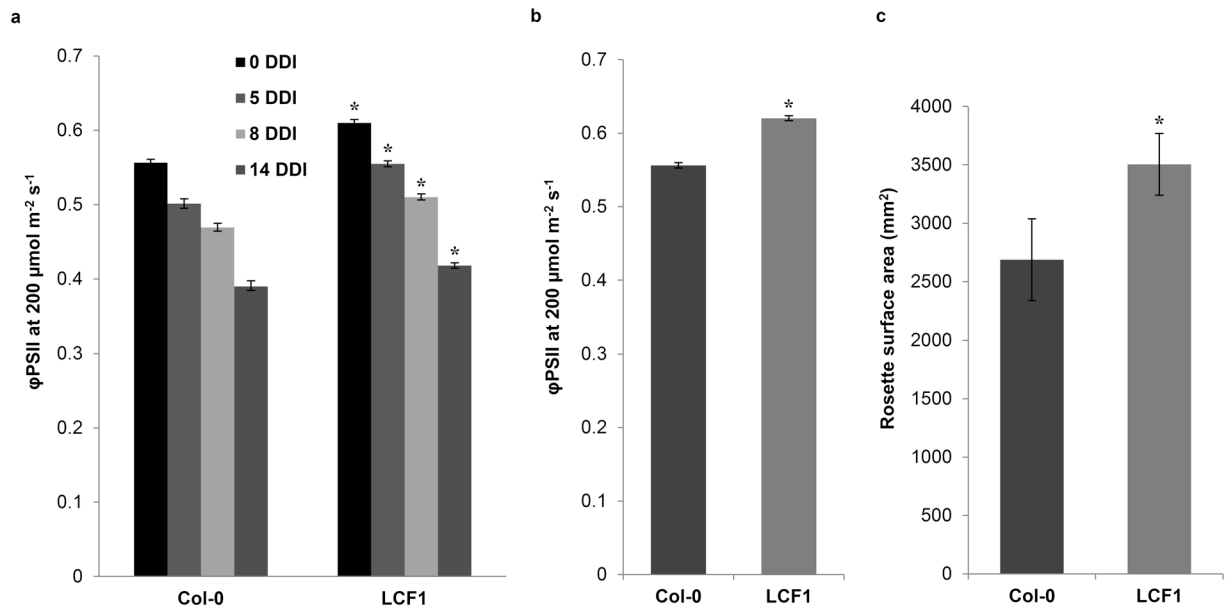


**Figure 6.** (a) Starch content of Col-0 and LCF1 plants at 28 days after germination ( $n = 3$  per genotype). Starch concentration was determined through enzymatic digestion with  $\alpha$ -amylase and  $\alpha$ -amyloglucosidase, followed by the quantification of glucose concentration by spectrophotometry. Asterisk (\*) represents a significant difference with Col-0, as determined by one-way ANOVA analysis ( $p < 0.01$ ). (b) Growth curves of Col-0 and LCF1 plants. Error bars represent SEM values ( $n = 36$  for Col-0,  $n = 99$  for LCF1), and are only visible when exceeding the data points. (c) Number of true leaves with discernable petioles at 24 days after germination. Error bars represent SEM values ( $n = 35$  for Col-0,  $n = 103$  for LCF1). (d) Dry weight of Col-0 and LCF1 shoots at 24 days after germination. Error bars represent SEM values ( $n = 24$  for Col-0,  $n = 69$  for LCF1). Asterisks (\*) represent a significant differences with Col-0 ( $p < 0.05$ ).

screens using other CF parameters as selection criteria. Most of these screens have yielded mutants with high CF phenotypes, which are very easily recognizable<sup>27–31</sup>. The most extensive screen for Arabidopsis mutants with HCF phenotypes was described by Meurer *et al.* in 1996<sup>27</sup>, and yielded 34 recessive *hcf* mutants from a population of 7700 ethyl methane sulfonate (EMS)-mutagenized Arabidopsis plants. We have not encountered any conspicuous mutants with HCF phenotypes in our library of 4278 plant lines, which is likely due to the fact that most of the described *hcf* are partial loss-of-function mutants with amino acid substitutions in core photosynthesis proteins<sup>27</sup> rather than full knock-out mutants or mutants producing truncated versions of these proteins, which are likely to be lethal.

The only other mutants with low CF and high  $\varphi$ PSII like LCF1 are the recently described *hpe1* knock-out mutants<sup>11</sup>, which were isolated from a library of more than 50,000 insertion mutants harboring enhancer tagging constructs<sup>32–34</sup> using  $F_v/F_m$  as a selection criterion. The CF characteristics of the *hpe1* mutants and LCF1 are very similar, having low CF, as well as high  $\varphi$ PSII and  $F_q'/F_v'$  (also known as qP)<sup>11</sup>. However, marked differences exist. While *hpe1* plants have defective NPQ and higher  $F_v/F_m$ , LCF1 plants have wild type NPQ levels and  $F_v/F_m$ , the latter difference meaning that LCF1 plants could not have been isolated by the group of Jin *et al.* using  $F_v/F_m$  as





**Figure 7.** Dark induced senescence of Col-0 and LCF1 plants. Plants were initially grown at standard light conditions, and were transferred to complete darkness at otherwise unchanged conditions at 21 days after germination. **(a)**  $\phi$ PSII measurements after 0, 5, 8 and 14 days of dark incubation (DDI), respectively. **(b)** Quantification of  $\phi$ PSII after 14 days of recovery in the light. **(c)** Quantification of rosette surface area after 14 days of recovery in the light. Asterisks (\*) represent a significant difference with Col-0 ( $p < 0.05$  for  $\phi$ PSII values and  $p < 0.1$  for rosette surface area values). Error bars represent SEM values ( $n = 7$  per genotype).

a selection criterion<sup>11</sup>. In principle, screening using  $F_v/F_m$  as a selection criterion also allows for the isolation of mutants with enhanced photochemistry, as it requires dark adaptation of the plants implying that differences in light-driven physiology of photosynthesis might not be found. The fact that we have not isolated *hpe1* mutants in the present study could very well be due to the fact that the library screened by Jin *et al.*<sup>11</sup> to isolate *hpe1* was ten-fold larger than the 3F-VP16 library. As an additional difference, while LCF1 plants displayed reduced growth at standard light conditions, *hpe1* plants had enhanced growth<sup>11</sup>. Also the molecular genetic data underlying the phenotypes are different; *HPE1* (At1g70200) encodes a chloroplast protein involved in the splicing of plastid RNAs, whereas the mutation causal for LCF1 is genetically linked to a T-DNA insertion in *MORC2* (At4g36280), encoding an ATPase of the Microorchidia (MORC) family which is active in the nucleus<sup>35</sup>. The annotated Arabidopsis genome does not contain any *HPE1* homologues in the vicinity of the *MORC2* locus at the top of chromosome 4 to which the phenotypes of LCF1 could be genetically linked.

Although the phenotype of LCF1 is genetically linked to the insertion of a 3F-VP16 encoding T-DNA construct in the *MORC2* gene (Fig. 2), we did not find any evidence that it is caused by a simple recessive knock-out mutation. None of 15 SALK lines containing T-DNA insertions in the *MORC2* locus produced plants with an LCF1 phenotype. Moreover, dedicated gene constructs aimed at complementing the LCF1 phenotype failed to do so (Fig. 2d). We found that mRNA corresponding to the 3F-VP16 transcription factor encoded by the T-DNA insert in *MORC2* of LCF1 was expressed (Fig. 2c and e), but when the SALK *MORC2* knock-out lines were transformed with the 3F-VP16 encoding construct isolated from LCF1 we did not find any transformants with an LCF1(-like) phenotype. Altogether, these findings might indicate that the 3F-VP16 expression construct specifically required the *morc2* mutant allele as found in LCF1 to exert its effect, an insertion allele which still allows for expression of the 5' part of the *MORC2* mRNA (Fig. 2e). Alternatively, it might be that the LCF1 phenotype is caused by an additional recessive mutation close to the T-DNA insertion. To discriminate between these possibilities, LCF1 plants were crossed with several of the SALK *MORC2* insertion lines, with the expectation that at least some of the different F1 plants would now show an epistatic effect of the LCF1 *morc2* allele in case that it would contribute to the phenotype. If not, F1 should have the normal photosynthetic parameters observed in the different SALK lines. However, despite various efforts and in contrast to control crossings with Col-0 plants, none of these crosses yielded any F1 seeds. We are therefore tempted to hypothesize that LCF1 plants express a truncated *MORC2* protein which functions as a novel epigenetic regulator of *MORC2* target loci, and which in combination with highly insertion locus specific expression of the 3F-VP16 fusion results in the phenotype of LCF1. As *AtMORC2* encodes an ATPase of the Microorchidia (MORC) family that in plants and animals is involved in the large scale epigenetic transcriptional silencing of transposons through the condensation of heterochromatin<sup>35</sup>, it is conceivable that chromatin interactions of the truncated protein form the basis of the LCF1 phenotype. However, given the experiments which have already been performed it will be very challenging to verify this hypothesis.

As mentioned above, LCF1 plants display a combination of high  $\phi$ PSII and low chlorophyll fluorescence, which has recently only been reported for the *hpe1* knock-mutants<sup>11</sup>. To our knowledge, LCF1 is the

first Arabidopsis mutant with a high  $\phi$ PSII and low CF likely due to an intrinsic decrease in PSII:PSI ratio. Interestingly, the increase in  $\phi$ PSII of LCF1 at standard light conditions (Figs 1a and 3a) is proportional to the decrease in PSII:PSI ratio (Fig. 5a), corroborating the notion that the PSII:PSI ratio is a determining factor for photochemical efficiency<sup>20</sup>. Combined with the fact that LCF1 has the same  $F_v/F_m$  as Col-0, it is most likely that although both plant lines have equally high maximum efficiencies of PSII photochemistry, PSII reaction centers of LCF1 have a higher linear operational electron transport rate than Col-0 due to the availability of relatively more PSI reaction centers in the light. This would also explain why LCF1 plants have much lower CF than Col-0 over the whole course of CF induction irrespective of the phase of induction (Fig. 3c), and are able to adapt better to extreme light conditions (Fig. S2). In terms of  $\phi$ PSII photochemistry, LCF1 plants thus appear to outperform the normal high light adaptation of Col-0 plants, possibly not solely relying on the reallocation of antennae from PSII to PSI by means of state transitions<sup>36</sup>.

As LCF1 has substantially higher  $\phi$ PSII than Col-0, one might expect it to have a correspondingly higher overall rate of photosynthesis and, therefore, to accumulate more biomass. However, LCF1 displayed stunted rather than enhanced growth compared to Col-0 at standard growth conditions. There is considerable debate about whether or not more efficient photosynthesis necessarily results in an increase in growth and yield<sup>25</sup>. Obviously, sugar metabolism and transport are both of great influence to plant growth<sup>37</sup>, just as the extent to which starch is made available for metabolism and towards which organs carbohydrates are partitioned. In particular, the accumulation of trehalose-6-phosphate, which is a metabolic precursor of glucose, has been reported to negatively impact growth upon an excessive accumulation of starch<sup>37</sup>. As LCF1 accumulates much more starch than Col-0 (Fig. 6a), it could be envisaged that a corresponding accumulation of trehalose-6-phosphate is responsible for the feedback inhibition of the growth of LCF1. Such a scenario might explain why dark-grown LCF1 plants, which are devoid of starch, can grow faster than Col-0 plants upon adaptation to light (Fig. 7c). The finding that LCF1 plants grown at low light intensity and short day, thus protected from excessive starch accumulation, grew equally well as Col-0 plants despite having higher  $\phi$ PSII (Figs 3b and S4) seems to further corroborate the idea of a starch related feedback mechanism for growth. Moreover, when allowing for more efficient carbon fixation by supplementing reduced light conditions with additional CO<sub>2</sub>, growth of LCF1 plants was again compromised compared to Col-0 plants (Fig. S3D). These observations indicate that LCF1 plants are sensitive to feedback inhibition downstream of photosynthetic carbon fixation, while lowering photosynthetic rate allows growth to be rescued.

In conclusion, by screening a library of T-DNA insertion mutants with  $\phi$ PSII as a selection criterion we have isolated the interesting novel mutant LCF1. This shows that it should be possible to isolate novel plant lines with enhanced photosynthetic properties using forward genetic screens. The genetics underlying the photosynthetic properties of LCF1 proved to be complex, but LCF1 phenotype indicated that it should be possible to develop plants which perform significantly better under adverse light conditions, such as low light intensity.

## Materials and Methods

**Growth conditions.** All plants in this study were grown on soil in a climate-controlled growth chamber at a constant temperature of 20 °C, 70% relative humidity, and at a light intensity of approximately 200  $\mu\text{mol m}^{-2} \text{s}^{-1}$  of photosynthetically active radiation (PAR) from mercury lamps at a 12 h photoperiod, unless otherwise specified. These light conditions are referred to as ‘standard light conditions’. Seeds were always stratified on soil for 3–4 days at 4 °C prior to being placed in the growth chamber. Plants grown at a low light intensity were firstly grown at standard light conditions, and were transferred to a growth cabinet with fluorescent tubes at a PAR light intensity of approximately 50  $\mu\text{mol m}^{-2} \text{s}^{-1}$  at 14 days after germination.

**Plant material and genome interrogation library construction.** The Arabidopsis accession Columbia-0 (Col-0) was used as a wild type in this study. All experiments with LCF1 were conducted with the T3 progeny of the originally isolated T2 LCF1 individual. SALK T-DNA insertion knock-out lines for the genomic locus At4g36280 (*MORC2*) were obtained from the Nottingham Arabidopsis Stock Centre (Table 1). A library of T-DNA constructs encoding fusions of three zinc fingers (3Fs) to the transcriptional activator VP16 was constructed in the binary vector pRF-VP16-Kana as described previously<sup>13</sup>. Col-0 plants were transformed with these constructs using the floral dip method<sup>38</sup>. Primary transformants (T1 generation) were selected on MA medium containing 35  $\mu\text{g}/\text{mL}$  kanamycin, and were transferred to soil after approximately 2 weeks. The primary transformants were then raised, and their seeds were harvested. Due to plant loss and infertility of a fraction of the plants, not all plants set seeds. Seeds of five or less primary transformants (T2 seeds) originating from the same 3F pool were combined and stored in a single seed bag. These bags were named ‘five-bags’. The genome interrogation library consisted of the T2 seeds of 4278 plant lines in total representing approximately 3500 3F-VP16 encoding constructs, and were stored in a total of 1034 five-bags.

**Library screening for  $\phi$ PSII mutants.** Approximately 20 seeds from every five-bag were sown. At 14 days after germination the  $\phi$ PSII of the plants was quantified at 200  $\mu\text{mol m}^{-2} \text{s}^{-1}$  of actinic light (the same intensity of PAR light as in the growth chamber) using a Technologica CF Imager (Technologica, Colchester, United Kingdom). The  $\phi$ PSII ( $F_q/F_m$ )<sup>8</sup> images were generated after 30 s of exposure to the actinic light with a 800 ms saturating pulse of 6226  $\mu\text{mol m}^{-2} \text{s}^{-1}$  (maximal intensity).

**Genetic analysis of LCF1.** For segregation analysis, LCF1 ( $\sigma$ ) was crossed with Col-0 ( $\varphi$ ). F1 individuals were selected for presence of the 3F-VP16 encoding T-DNA construct on half strength MS medium containing 50  $\mu\text{g}/\text{mL}$  kanamycin. After 2–3 weeks on selection medium, resistant individuals were transferred to soil. The F2 seeds were harvested and  $\phi$ PSII of a population of F2 individuals was quantified as described above. The T-DNA copy number in the genome of LCF1 was examined using the Southern blot method<sup>39</sup> on *NcoI* predigested genomic DNA isolated with the CTAB extraction protocol<sup>40</sup>. As a probe, DIG-labelled PCR product was

Primer name	Sequence (5'-3')	Restriction site underlined
NOS1 FW	GATTGAATCCTGTTGCCGGTCTT	
NOS2 FW	GCATGACGTTATTTATGAGATGG	
NOS3 FW	CGCAAACCTAGGATAAAATATCGC	
AD1	NTCGASTWTSWGT	
AD2	NGTCGASWGANAWGAA	
AD3	WGTGNAGWANCANAGA	
At4g36280 FWa	ACGGAGTAGTAGGAGGAAGAGA	
At4g36280 FWb	TTGGAAGGCGGGAGATTACT	
At4g36280 REVa	CTTTTCAACCTCGCCTCCA	
At4g36280 REVb	TGTAGGTTGTGGTTGAGCTG	
RPS5a FW	GCCCAAACCTAAATTTCTCATC	
tNOS REV	CAAGACCGCAACAGGAT	
MORC2 cDNA FW	AACCATGGCTCCTATGGCGAAAAATGCAG	NcoI
MORC2 cDNA REV	AAGGTCACCTAAGCTTGTGCATCTCCT	BstEII
ATG6 FW	AGACACAGTTGAACAGCCA	
ATG6 REV	GTATGCTTCCACGTCCCTCG	
SCAMP5 FW	TCACCTACTTGATTACAT TGGCT	
SCAMP5 REV	ATCAATTGCTGCAAGCACAC	
VP16 FW	ATTACCCCCACGACTCC	
VP16 REV	ACCACCGTACTCGTCAATTC	
At4g36270 FW	CCTATGATCCGATATGCAA	
At4g36270 REV	GTGGGTGGAAGATGGAAA	
MORC2Δ FW	GCCTCCTATGGCGAAAAA	
MORC2Δ REV	GTACTTGCTGATTCTCTCCT	
MORC1 FW	GAAAAATTACACAGTCGCC	
MORC1 REV	CTATTAGAGATGCCAAGC	
MORC2 gene FW	AAACTAGTCTCAACCCACAACCACCT	SpeI
MORC2 gene REV	AAGGTCACCTCCACCGCCATCATCTT	BstEII
171 FW	ACTTGTGGTATTTGTCTC	
171 REV	AATTCTACGGATAAGTTCAG	
880 p1 FW	GGTTCTCTCCTTCTT	
1325 p1 REV	TCCTGACCAGTTTTTCT	

**Table 2.** Primers used for the genetic analysis of LCF1. Nucleotide codes: ‘N’ is any of the four bases; ‘W’ is either A or T; ‘S’ is either G or C.

generated with the primer combination RPS5a FW and tNOS REV (Table 2) from LCF1 genomic DNA, using PCR DIG Labelling Mix (Roche). Detection of hybridization signal was performed with the DIG Wash and Block Buffer Set (Roche), according to the instructions provided by the manufacturer. The insertion site of the 3F-VP16 encoding T-DNA construct in the genome of LCF1 was mapped via TAIL-PCR<sup>41</sup>, using forward primers NOS1 FW, NOS2 FW and NOS3 FW (Table 2), respectively, for the three consecutive PCR reactions each with one of degenerative primers AD1, AD2 and AD3 (Table 2), respectively. TAIL-PCR products were cloned into the pJET Blunt cloning vector using the CloneJet PCR Cloning Kit (Thermo Scientific), and sequenced by Sanger sequencing (Macrogen Europe, Amsterdam, The Netherlands). The 3' regions of the PCR products were BLASTed (<http://blast.ncbi.nlm.nih.gov/Blast.cgi>) for identification of the insertion locus. For the confirmation of insertion locus At4g36280 (*MORC2*), PCRs were performed using combinations of At4g36280 specific primers (FWa, FWb, REVa, REVb; Table 2) and combinations of At4g36280 and T-DNA specific primers (RPS5a FW, tNOS REV; Table 2).

**Genetic mapping.** To establish a population of plants for genetic mapping LCF1 (♂) was crossed with the Arabidopsis accession Landsberg erecta (Ler-0; ♀). The resulting F1 hybrids were allowed to set seeds (F2) and  $\phi$ PSII of a population of F2 seedlings was quantified at 200  $\mu\text{mol m}^{-2} \text{s}^{-1}$  actinic light at 7 days after germination as described above. Genomic DNA was isolated from a single young leaf of individuals exhibiting the high  $\phi$ PSII phenotype using a quick DNA extraction protocol<sup>42</sup>. The individuals were then genotyped by PCR analysis using primers 171 FW and REV (Table 2) for the indel marker 4-AL022141-9227 (<http://amp.genomics.org.cn>), which yields a 157 bp product for a Col-0 sequence and a 134 bp product for a Ler-0 sequence. The presence of wild type At4g36280 loci or loci with T-DNA inserts was determined by PCR analysis with the primer combination 880 FW and 1325 p1 REV (Table 2).

**Transformation with T-DNA construct reconstituted from LCF1.** The 3F-VP16 encoding fragment was isolated from LCF1 by PCR using the T-DNA specific primer combination RPS5a FW and tNOS REV

(Table 2). A reconstituted T-DNA construct was generated in the binary vector pRF-VP16-Kana<sup>13</sup> using the 3F encoding sequence from this PCR product. Col-0 plants were transformed with the reconstituted T-DNA construct using the floral dip method<sup>38</sup>. Primary transformants were selected by plating sterilized seeds on MA medium containing 35 µg/mL kanamycin, and transferred to soil after 2–3 weeks.

**RT-PCR and RT-qPCR analysis.** Col-0 and LCF1 plants were ground to powder in liquid nitrogen with pistils and mortars at 35 days post germination. Total RNA was extracted from 50–100 mg of tissue powder of each individual using the RNeasy Plant Mini Kit (QIAGEN). RT-PCR reactions were performed using the OneStep RT-PCR Kit (Qiagen), with primer combinations specific for *MORC2* (*MORC2* cDNA FW and REV), the reference genes *ATG6* and *SCAMP5* described by Hruz *et al.*<sup>43</sup> (*ATG6* FW and REV; *SCAMP5* FW and REV), and for the 3F-VP16 fusion encoded by the T-DNA in LCF1 (VP16 FW and REV). For RT-qPCR analysis, first strand cDNA synthesis was performed using the iScript Select cDNA Synthesis Kit (BIORAD), and the PCR reactions were prepared using the SYBR Green PCR Master Mix (Applied Biosystems). The RT-qPCR reactions were performed using the CFX96 Touch Real-Time PCR Detection System (BIORAD), using primer combinations specific for At4g36270 (*At4g36270* FW and REV), the 5' end of *MORC2* expected to still be expressed in LCF1 (*MORC2Δ* FW and REV), *MORC1* (*MORC1* FW and REV), and combinations specific for *ATG6*, *SCAMP5* and the 3F-VP16 construct as described above for RT-PCR. Expression values were normalized to the average of the expression values of both *ATG6* and *SCAMP5*. The sequences of all primers are listed Table 2.

**Complementation assay.** The full length genomic *MORC2* (At4g36280) sequence (including promoter and terminator sequences) was amplified by PCR from genomic DNA of Col-0 isolated with the CTAB extraction protocol<sup>40</sup>, using the primer combination *MORC2* gene FW and *MORC2* gene REV (Table 2). The PCR fragment was ligated into the binary vector pCAMBIA3301 (CAMBIA, Canberra, Australia) predigested with XbaI and BstEII. The resulting binary vector was designated pCAMBIA3301A. The cDNA of At4g36280 was isolated from a root cDNA library<sup>44</sup> using the primer combination *MORC2* cDNA FW and *MORC2* cDNA REV (Table 2). The PCR fragment was ligated into the binary vector pCAMBIA3301 predigested with NcoI and BstEII, thereby placing the cDNA under control of the NOS promoter and terminator sequences. This binary vector was designated pCAMBIA3301C. The plasmids pCAMBIA3301, pCAMBIA3301A and pCAMBIA3301C were mobilized to *Agrobacterium tumefaciens* strain LBA1100<sup>45</sup> as described previously<sup>14</sup>. Col-0 and LCF1 plants were transformed with the constructs using the floral dip method<sup>38</sup>. Primary transformants were selected by plating the resulting seeds pools on MA medium containing 25 µg/mL PPT, and were transferred to soil after approximately 2 weeks. At 28 days after germination the  $\phi$ PSII of all primary transformants was quantified at 200 µmol m<sup>-2</sup> s<sup>-1</sup> of actinic light as described above.

**Chlorophyll fluorescence measurements.** The quantification of  $\phi$ PSII was performed as described above, with adaptation steps to the actinic light lasting 30 to 60 s, depending on the number of plants that had to be analyzed. For the quantification of  $\phi$ PSII at different light intensities ('slow' light response curves), plants were adapted to every light intensity for 15 min instead of 30 s as described above. The maximum quantum efficiency of PSII photochemistry ( $F_v/F_m$ ) was also quantified using the Technologica CF Imager (Technologica, Essex, United Kingdom) on dark adapted ( $\geq 30$  min) plants.  $F_m$  images were generated with a 800 ms saturating pulse of 6226 µmol m<sup>-2</sup> s<sup>-1</sup> (maximal intensity). 'Fast' light response curves of  $\phi$ PSII were made on dark adapted ( $\geq 30$  min) plants after  $F_v/F_m$  quantification, thereby also allowing for the calculation of NPQ,  $F_q'/F_v'$  and  $F_v'/F_m'$  images, respectively. For the quantification of the Kautsky effect, dark adapted ( $\geq 30$  min) plants were exposed to 50 µmol m<sup>-2</sup> s<sup>-1</sup> of actinic light, and the absolute counts of fluorescence were quantified for 3 min using the Technologica CF Imager. At the other light conditions,  $\phi$ PSII was quantified every 15 min for 1 h at 200 µmol m<sup>-2</sup> s<sup>-1</sup> of actinic light as described above, then conditions were switched to either low (20 µmol m<sup>-2</sup> s<sup>-1</sup>), fluctuating (50 µmol m<sup>-2</sup> s<sup>-1</sup> for 5 min, followed by 500 µmol m<sup>-2</sup> s<sup>-1</sup> for 1 min), high (1000 µmol m<sup>-2</sup> s<sup>-1</sup>) or very high (2000 µmol m<sup>-2</sup> s<sup>-1</sup>) actinic light.  $\phi$ PSII was then quantified again every 15 min for 1 h (except for fluctuating light conditions, where  $\phi$ PSII was quantified after every 5 min of 50 µmol m<sup>-2</sup> s<sup>-1</sup> light and every 1 min of 500 µmol m<sup>-2</sup> s<sup>-1</sup>), followed by a quantification of  $\phi$ PSII every 15 min for 6 h at 200 µmol m<sup>-2</sup> s<sup>-1</sup>. The calculation of the CF parameters was performed with the average of all pixels in every rosette. All CF data were statistically analyzed using the heteroscedastic T-Test function of Microsoft Excel 2010 (assuming unequal variance between samples). A *p*-value of 0.05 was used as a threshold for significance.

**Analysis of pigment content and PSII-to-PSI ratio.** Analysis of pigment content was performed on Col-0 and LCF1 plants at 28 days after germination. At the middle of the light period (*t* = 6 hours), shoots were harvested, frozen in liquid nitrogen and stored at -80 °C. The chlorophyll and total carotenoid contents were determined in dimethylformamide according to the method of Porra *et al.*<sup>46</sup>. Chloroplasts were isolated according to the protocol of Casazza *et al.*<sup>47</sup>. The chlorophyll concentration in the chloroplast isolates was determined according to the protocol of Arnon<sup>48</sup>. To obtain the PSII-to-PSI ratio, fluorescence emission spectra were obtained at 663 nm using a Cary Eclipse fluorescence spectrophotometer (Varian) at room temperature<sup>49</sup>. The peak at 680 nm in the fluorescence spectra corresponds to PSII emission and the pronounced shoulder at 730 nm corresponds to PSI emission. The PSII-to-PSI ratio was calculated as  $I_{730\text{nm}}/I_{680\text{nm}}$ . All data were statistically analysed using the one-way ANOVA function of OriginPro v2016 (OriginLab Corporation, Northampton, MA, USA). A *p*-value of 0.05 was used as a threshold for significance.

**Analysis of shoot starch content.** Briefly, starch was extracted from the shoots of Col-0 and LCF1 plants (28 days after germination) with 80% ethanol and gelatinized at 95 °C, following the protocol of Smith and Zeeman<sup>50</sup>. The shoots were harvested at *t* = 6 h into the light period. Starch was then digested with  $\alpha$ -amylase and  $\alpha$ -amylglucosidase at 37 °C. After digestion, the starch content was determined as released glucose with a

hexokinase/glucose-6-phosphate dehydrogenase-based spectrometer assay at 340 nm. The data were statistically analysed using the one-way ANOVA function of OriginPro v2016 (OriginLab Corporation, Northampton, MA, USA). A *p*-value of 0.01 was used as a threshold for significance.

**Growth analysis.** Photos were taken from the top of the plants with a fixed digital camera (Canon EOS 1100D) from 10 days after germination onwards and every three days. Using an ImageJ plugin, the intensity of the green channel of these RGB images was multiplied by two, both the red and blue channels were subtracted and the image was converted to a binary image using the ImageJ 'Intermodes' Threshold Method. The binary images were manually inspected to make sure that all the leaves of each individual plant were connected to each other as a rosette. In cases where leaves were not properly connected, they were connected manually to the rest of the rosette by a black line of two pixels in width. The surface area of each rosette was subsequently calculated in pixel<sup>2</sup> using the 'Analyze Particles' function of ImageJ, and then converted to mm<sup>2</sup> by multiplying this value by the mm<sup>2</sup>/pixel<sup>2</sup> ratio of every RGB image separately. This ratio was calculated from the dimensions of the pots that the plants were growing in, as this value is constant for every individual throughout the experiment. At 24 days after germination, the leaves with clearly distinguishable petioles were counted manually and shoots were harvested for fresh weight determinations. Dry weight was determined after incubation of the shoots for 2 days at 60 °C. All growth parameter data were statistically analyzed using the heteroscedastic T-Test function of Microsoft Excel 2010 (assuming unequal variance between samples). A *p*-value of 0.05 was used as a threshold for significance.

**Analysis of the effect of dark induced senescence.** The  $\phi$ PSII of Col-0 plants and LCF1 plants was quantified at 21 days after germination at 200  $\mu\text{mol m}^{-2} \text{s}^{-1}$  of actinic light as described above. The plants were subsequently transferred to complete darkness at otherwise unchanged conditions. At 5 days of dark incubation (DDI), 8 DDI and 14 DDI, respectively, plants were temporarily adapted to 200  $\mu\text{mol m}^{-2} \text{s}^{-1}$  of PAR light in the greenhouse for approximately 3 h and  $\phi$ PSII was quantified at 200  $\mu\text{mol m}^{-2} \text{s}^{-1}$  of actinic light, as described above. At 14 DDI, plants were transferred back to standard light conditions. After 14 days of incubation in the light (now 49 days after germination),  $\phi$ PSII was quantified as described above. Rosette surface area data for all individuals were also obtained from the fluorescence images (in mm<sup>2</sup>). Data were statistically analyzed using the heteroscedastic T-Test function of Microsoft Excel 2010 (assuming unequal variance between samples). A *p*-value of 0.05 was used as a threshold for significance in the case of  $\phi$ PSII and 0.1 in the case of rosette surface area.

## References

- Barber, J. Photosynthetic energy conversion: natural and artificial. *Chemical Society reviews* **38**, 185–196, doi:10.1039/b802262n (2009).
- Evans, J. R. Improving photosynthesis. *Plant physiology* **162**, 1780–1793, doi:10.1104/pp.113.219006 (2013).
- Zhu, X. G., Long, S. P. & Ort, D. R. Improving photosynthetic efficiency for greater yield. *Annual review of plant biology* **61**, 235–261, doi:10.1146/annurev-arplant-042809-112206 (2010).
- Peterhansel, C. & Maurino, V. G. Photorespiration redesigned. *Plant physiology* **155**, 49–55, doi:10.1104/pp.110.165019 (2011).
- Miyao, M. Molecular evolution and genetic engineering of C<sub>4</sub> photosynthetic enzymes. *Journal of experimental botany* **54**, 179–189 (2003).
- Parry, M. A., Andralojc, P. J., Mitchell, R. A., Madgwick, P. J. & Keys, A. J. Manipulation of Rubisco: the amount, activity, function and regulation. *Journal of experimental botany* **54**, 1321–1333 (2003).
- Muller, P., Li, X. P. & Niyogi, K. K. Non-photochemical quenching. A response to excess light energy. *Plant physiology* **125**, 1558–1566 (2001).
- Baker, N. R. Chlorophyll fluorescence: a probe of photosynthesis *in vivo*. *Annu Rev Plant Biol* **59**, 89–113, doi:10.1146/annurev.arplant.59.032607.092759 (2008).
- van Rooijen, R., Aarts, M. G. & Harbinson, J. Natural genetic variation for acclimation of photosynthetic light use efficiency to growth irradiance in Arabidopsis. *Plant Physiol* **167**, 1412–1429, doi:10.1104/pp.114.252239 (2015).
- El-Lithy, M. E. *et al.* Altered photosynthetic performance of a natural Arabidopsis accession is associated with atrazine resistance. *Journal of experimental botany* **56**, 1625–1634, doi:10.1093/jxb/eri157 (2005).
- Jin, H. *et al.* Optimization of Light-Harvesting Pigment Improves Photosynthetic Efficiency. *Plant Physiol* **172**, 1720–1731, doi:10.1104/pp.16.00698 (2016).
- van Tol, N. & van der Zaal, B. J. Artificial transcription factor-mediated regulation of gene expression. *Plant Sci* **225**, 58–67, doi:10.1016/j.plantsci.2014.05.015 (2014).
- Lindhout, B. I., Pinas, J. E., Hooikaas, P. J. & van der Zaal, B. J. Employing libraries of zinc finger artificial transcription factors to screen for homologous recombination mutants in Arabidopsis. *The Plant journal: for cell and molecular biology* **48**, 475–483, doi:10.1111/j.1365-3113.2006.02877.x (2006).
- Jia, Q. *et al.* Zinc finger artificial transcription factor-based nearest inactive analogue/nearest active analogue strategy used for the identification of plant genes controlling homologous recombination. *Plant Biotechnol J* **11**, 1069–1079, doi:10.1111/pbi.12101 (2013).
- van Tol, N., Pinas, J., Schat, H., Hooikaas, P. J. & van der Zaal, B. J. Genome interrogation for novel salinity tolerant Arabidopsis mutants. *Plant Cell Environ* **39**, 2650–2662, doi:10.1111/pce.12805 (2016).
- Segal, D. J., Dreier, B., Beerli, R. R. & Barbas, C. F. 3rd Toward controlling gene expression at will: selection and design of zinc finger domains recognizing each of the 5'-GNN-3' DNA target sequences. *Proceedings of the National Academy of Sciences of the United States of America* **96**, 2758–2763 (1999).
- Weijers, D. *et al.* An Arabidopsis Minute-like phenotype caused by a semi-dominant mutation in a RIBOSOMAL PROTEIN S5 gene. *Development* **128**, 4289–4299 (2001).
- Stirbet, A. & Govindjee. On the relation between the Kautsky effect (chlorophyll a fluorescence induction) and Photosystem II: basics and applications of the OJIP fluorescence transient. *Journal of photochemistry and photobiology. B, Biology* **104**, 236–257, doi:10.1016/j.jphotobiol.2010.12.010 (2011).
- Papageorgiou, G. C., Tsimilli-Michael, M. & Stamatakis, K. The fast and slow kinetics of chlorophyll a fluorescence induction in plants, algae and cyanobacteria: a viewpoint. *Photosynthesis research* **94**, 275–290, doi:10.1007/s11120-007-9193-x (2007).

20. Chow, W. S., Melis, A. & Anderson, J. M. Adjustments of Photosystem Stoichiometry in Chloroplasts Improve the Quantum Efficiency of Photosynthesis. *P Natl Acad Sci USA* **87**, 7502–7506, doi:10.1073/pnas.87.19.7502 (1990).
21. Croce, R. & van Amerongen, H. Natural strategies for photosynthetic light harvesting. *Nat Chem Biol* **10**, 492–501, doi:10.1038/nchembio.1555 (2014).
22. Leister, D., Varotto, C., Pesaresi, P., Niwergall, A. & Salamini, F. Large-scale evaluation of plant growth in *Arabidopsis thaliana* by non-invasive image analysis. *Plant Physiol Bioch* **37**, 671–678, doi:10.1016/S0981-9428(00)80097-2 (1999).
23. Kaiser, E. *et al.* Metabolic and diffusional limitations of photosynthesis in fluctuating irradiance in *Arabidopsis thaliana*. *Sci Rep* **6**, 31252, doi:10.1038/srep31252 (2016).
24. Campbell, W. J., Allen, L. H. & Bowes, G. Effects of CO<sub>2</sub> Concentration on Rubisco Activity, Amount, and Photosynthesis in Soybean Leaves. *Plant physiology* **88**, 1310–1316 (1988).
25. Kirschbaum, M. U. Does enhanced photosynthesis enhance growth? Lessons learned from CO<sub>2</sub> enrichment studies. *Plant physiology* **155**, 117–124, doi:10.1104/pp.110.166819 (2011).
26. Sakuraba, Y. *et al.* *Arabidopsis* STAY-GREEN2 is a negative regulator of chlorophyll degradation during leaf senescence. *Molecular plant* **7**, 1288–1302, doi:10.1093/mp/ssu045 (2014).
27. Meurer, J., Meierhoff, K. & Westhoff, P. Isolation of high-chlorophyll-fluorescence mutants of *Arabidopsis thaliana* and their characterisation by spectroscopy, immunoblotting and northern hybridisation. *Planta* **198**, 385–396 (1996).
28. Dinkins, R. D., Bandaranayake, H., Baeza, L., Griffiths, A. J. & Green, B. R. Hcf5, a nuclear photosynthetic electron transport mutant of *Arabidopsis thaliana* with a pleiotropic effect on chloroplast gene expression. *Plant physiology* **113**, 1023–1031 (1997).
29. Shikanai, T., Munekage, Y., Shimizu, K., Endo, T. & Hashimoto, T. Identification and characterization of *Arabidopsis* mutants with reduced quenching of chlorophyll fluorescence. *Plant & cell physiology* **40**, 1134–1142 (1999).
30. Lennartz, K. *et al.* HCF164 encodes a thioredoxin-like protein involved in the biogenesis of the cytochrome b(6)f complex in *Arabidopsis*. *The Plant cell* **13**, 2539–2551 (2001).
31. Schmitz, J. *et al.* Defects in leaf carbohydrate metabolism compromise acclimation to high light and lead to a high chlorophyll fluorescence phenotype in *Arabidopsis thaliana*. *BMC plant biology* **12**, 8, doi:10.1186/1471-2229-12-8 (2012).
32. Jin, H. *et al.* Hypersensitive to High Light1 interacts with Low Quantum Yield of Photosystem III and functions in protection of photosystem II from photodamage in *Arabidopsis*. *Plant Cell* **26**, 1213–1229, doi:10.1105/tpc.113.122424 (2014).
33. Ichikawa, T. *et al.* Sequence database of 1172 T-DNA insertion sites in *Arabidopsis* activation-tagging lines that showed phenotypes in T1 generation. *Plant J* **36**, 421–429 (2003).
34. Nakazawa, M. & Matsui, M. Selection of hygromycin-resistant *Arabidopsis* seedlings. *Biotechniques* **34**, 28–30 (2003).
35. Moissiard, G. *et al.* Transcriptional gene silencing by *Arabidopsis* microRNA homologues involves the formation of heteromers. *Proc Natl Acad Sci USA* **111**, 7474–7479, doi:10.1073/pnas.1406611111 (2014).
36. Rochaix, J. D. *et al.* Protein kinases and phosphatases involved in the acclimation of the photosynthetic apparatus to a changing light environment. *Philos Trans R Soc Lond B Biol Sci* **367**, 3466–3474, doi:10.1098/rstb.2012.0064 (2012).
37. O'Hara, L. E., Paul, M. J. & Wingler, A. How Do Sugars Regulate Plant Growth and Development? New Insight into the Role of Trehalose-6-Phosphate. *Mol Plant* **6**, 261–274, doi:10.1093/mp/sss120 (2013).
38. Clough, S. J. & Bent, A. F. Floral dip: a simplified method for *Agrobacterium*-mediated transformation of *Arabidopsis thaliana*. *Plant J* **16**, 735–743 (1998).
39. Southern, E. Southern blotting. *Nature protocols* **1**, 518–525, doi:10.1038/nprot.2006.73 (2006).
40. Richards, E., Reichardt, M. & Rogers, S. Preparation of genomic DNA from plant tissue. *Current protocols in molecular biology* edited by Frederick M. Ausubel... *et al.* Chapter 2, Unit 2.3, doi:10.1002/0471142727.mb0203s27 (2001).
41. Liu, Y. G., Mitsukawa, N., Oosumi, T. & Whittier, R. F. Efficient isolation and mapping of *Arabidopsis thaliana* T-DNA insert junctions by thermal asymmetric interlaced PCR. *The Plant journal: for cell and molecular biology* **8**, 457–463 (1995).
42. Edwards, K., Johnstone, C. & Thompson, C. A Simple and Rapid Method for the Preparation of Plant Genomic DNA for Pcr Analysis. *Nucleic Acids Res* **19**, 1349–1349, doi:10.1093/nar/19.6.1349 (1991).
43. Hruz, T. *et al.* RefGenes: identification of reliable and condition specific reference genes for RT-qPCR data normalization. *Bmc Genomics* **12**, doi:Artn 15610.1186/1471-2164-12-156 (2011).
44. van der Zaal, B. J. *et al.* Overexpression of a novel *Arabidopsis* gene related to putative zinc-transporter genes from animals can lead to enhanced zinc resistance and accumulation. *Plant Physiol* **119**, 1047–1055 (1999).
45. Beijersbergen, A., Dendulkas, A., Schilperoort, R. A. & Hooykaas, P. J. J. Conjugative Transfer by the Virulence System of *Agrobacterium tumefaciens*. *Science* **256**, 1324–1327, doi:10.1126/science.256.5061.1324 (1992).
46. Porra, R. J., Thompson, W. A. & Kriedemann, P. E. Determination of Accurate Extinction Coefficients and Simultaneous-Equations for Assaying Chlorophyll-a and Chlorophyll-B Extracted with 4 Different Solvents - Verification of the Concentration of Chlorophyll Standards by Atomic-Absorption Spectroscopy. *Biochim Biophys Acta* **975**, 384–394, doi:10.1016/S0005-2728(89)80347-0 (1989).
47. Casazza, A. P., Tarantino, D. & Soave, C. Preparation and functional characterization of thylakoids from *Arabidopsis thaliana*. *Photosynth Res* **68**, 175–180, doi:10.1023/A:1011818021875 (2001).
48. Arnon, D. I. Copper Enzymes in Isolated Chloroplasts - Polyphenoloxidase in Beta-Vulgaris. *Plant Physiology* **24**, 1–15, doi:10.1104/pp.24.1.1 (1949).
49. Peter, S. *et al.* Photosynthesis in a different light: spectro-microscopy for *in vivo* characterization of chloroplasts. *Front Plant Sci* **5**, doi:ARTN 29210.3389/fpls.2014.00292 (2014).
50. Smith, A. M. & Zeeman, S. C. Quantification of starch in plant tissues. *Nat Protoc* **1**, 1342–1345, doi:10.1038/nprot.2006.232 (2006).

## Acknowledgements

We would like to thank Johan Pinas for technical assistance in the early stages of the project. This project was carried out within the research programme of BioSolar Cells, co-financed by the Dutch Ministry of Economic Affairs.

## Author Contributions

N.T. and B.Z. designed the study. N.T. designed and performed most of the experiments, and analyzed the data. M.R., D.A. and A.A. designed and performed additional experiments and analyzed the data. N.T. wrote the manuscript. H.G. and P.H. provided critical comments and suggestions. P.H. and B.Z. revised the manuscript.

## Additional Information

**Supplementary information** accompanies this paper at doi:10.1038/s41598-017-03611-1

**Competing Interests:** The authors declare that they have no competing interests.

**Publisher's note:** Springer Nature remains neutral with regard to jurisdictional claims in published maps and institutional affiliations.



**Open Access** This article is licensed under a Creative Commons Attribution 4.0 International License, which permits use, sharing, adaptation, distribution and reproduction in any medium or format, as long as you give appropriate credit to the original author(s) and the source, provide a link to the Creative Commons license, and indicate if changes were made. The images or other third party material in this article are included in the article's Creative Commons license, unless indicated otherwise in a credit line to the material. If material is not included in the article's Creative Commons license and your intended use is not permitted by statutory regulation or exceeds the permitted use, you will need to obtain permission directly from the copyright holder. To view a copy of this license, visit <http://creativecommons.org/licenses/by/4.0/>.

© The Author(s) 2017