



Universiteit  
Leiden  
The Netherlands

## Outflows and extended [C II] haloes in high-redshift galaxies

Pizzati, E.; Ferrara, A.; Pallottini, A.; Gallerani, S.; Vallini, L.; Decataldo, D.; Fujimoto, S.

### Citation

Pizzati, E., Ferrara, A., Pallottini, A., Gallerani, S., Vallini, L., Decataldo, D., & Fujimoto, S. (2020). Outflows and extended [C II] haloes in high-redshift galaxies. *Monthly Notices Of The Ras (0035-8711)*, 495(1), 160-172. doi:10.1093/mnras/staa1163

Version: Accepted Manuscript

License: [Leiden University Non-exclusive license](#)

Downloaded from: <https://hdl.handle.net/1887/3141930>

**Note:** To cite this publication please use the final published version (if applicable).

# Outflows and extended [C II] halos in high redshift galaxies

E. Pizzati<sup>1\*</sup>, A. Ferrara<sup>1,2</sup>, A. Pallottini<sup>1,2</sup>, S. Gallerani<sup>1</sup>, L. Vallini<sup>3</sup>, D. Decataldo<sup>1</sup>, S. Fujimoto<sup>4</sup>

<sup>1</sup> *Scuola Normale Superiore, Piazza dei Cavalieri 7, 56126 Pisa, Italy*

<sup>2</sup> *Centro Fermi, Museo Storico della Fisica e Centro Studi e Ricerche “Enrico Fermi”, Piazza del Viminale 1, Roma, 00184, Italy*

<sup>3</sup> *Leiden Observatory, Leiden University, PO Box 9500, 2300 RA Leiden, The Netherlands*

<sup>4</sup> *The Cosmic Dawn Center, Niels Bohr Institute, University of Copenhagen, Vibenshuset 4. sal, Lyngbyvej 2, 2100 Copenhagen, Denmark*

Accepted XXX. Received YYY; in original form ZZZ

## ABSTRACT

Recent stacked ALMA observations have revealed that normal, star-forming galaxies at  $z \approx 6$  are surrounded by extended ( $\approx 10$  kpc) [C II] emitting halos which are not predicted by the most advanced, zoom-in simulations. We present a model in which these halos are the result of supernova-driven cooling outflows. Our model contains two free parameters, the outflow mass loading factor,  $\eta$ , and the parent galaxy dark matter halo circular velocity,  $v_c$ . The outflow model successfully matches the observed [C II] surface brightness profile if  $\eta = 3.20 \pm 0.10$  and  $v_c = 170 \pm 10 \text{ km s}^{-1}$ , corresponding to a dynamical mass of  $\approx 10^{11} M_\odot$ . The predicted outflow rate and velocity range are  $128 \pm 5 M_\odot \text{ yr}^{-1}$  and  $300 - 500 \text{ km s}^{-1}$ , respectively. We conclude that: (a) extended halos can be produced by cooling outflows; (b) the large  $\eta$  value is marginally consistent with starburst-driven outflows, but it might indicate additional energy input from AGN; (c) the presence of [C II] halos requires an ionizing photon escape fraction from galaxies  $f_{\text{esc}} \ll 1$ . The model can be readily applied also to individual high- $z$  galaxies, as those observed, e.g., by the ALMA ALPINE survey now becoming available.

**Key words:** galaxies: ISM – galaxies: high-redshift – ISM: photo-dissociation region

## 1 INTRODUCTION

The advent of radio-interferometers such as ALMA and NOEMA has offered for the first time the opportunity to investigate the internal structure of galaxies located deep into the Epoch of Reionization (EoR, redshift  $z > 6$ ). These studies are now nicely complementing large scale near-infrared surveys which have successfully characterised the evolution of the rest-frame galaxy UV luminosity functions, star formation, stellar-build up history, and size evolution, thus building a solid statistical characterisation of these earliest systems up to  $z \approx 10$ . We defer the interested reader to the recent review by Dayal & Ferrara (2018) and references therein.

Thanks to Far Infrared (FIR) emission lines such as [C II]  $158 \mu\text{m}$ , [O III]  $88 \mu\text{m}$ , CO from various rotational levels, and dust continuum we are rapidly improving our understanding of the small-scale, internal properties and assembly history of galaxies in the EoR, including their interstellar medium and relation to star formation (Capak et al. 2015; Carniani et al. 2017), gas dynamics (Agertz & Kravtsov 2015; Pallottini et al. 2017a; Hopkins et al. 2018),

spatial offsets (Inoue et al. 2016; Laporte et al. 2017; Carniani et al. 2017, 2018), dust and metal enrichment (Capak et al. 2015; Tamura et al. 2018; Behrens et al. 2018; Knudsen et al. 2016; Laporte et al. 2017), the molecular content (Vallini et al. 2018; D’Odorico et al. 2018), interstellar radiation field (Stark et al. 2015; Pallottini et al. 2019), and outflows (Gallerani et al. 2018).

Due to its brightness (it is one of the major coolant of the ISM) the [C II]  $^2P_{3/2} \rightarrow ^2P_{1/2}$  fine-structure transition at  $1900.5469 \text{ GHz}$  ( $157.74 \mu\text{m}$ ) has been routinely used as a work-horse for the investigations. A sample of tens of  $z > 6$  galaxies is now available, providing solid starting point for morphological and dynamical studies of these systems.

One of these studies (Fujimoto et al. 2019, F19 hereafter) has combined 18 galaxies  $5.1 < z < 7.1$  by applying the stacking technique in the uv-visibility plane to ALMA Band 6/7 data. Quite surprisingly, this study found (at  $9.2\sigma$ -level) that the radial profiles of the [C II] surface brightness is significantly ( $\approx 5\times$ ) more extended than the HST stellar continuum and ALMA dust continuum. In absolute terms the detected halo extends out to approximately 10 kpc from the stacked galaxy center. This discovery parallels the extended emission found in a more massive,  $z \sim 6$  quasar host, galaxy (Cicone et al. 2015), where the [CII] emission is de-

\* elia.pizzati@sns.it

tected up to 20-30 kpc, while the FIR emission does not exceed 15 kpc. Similar results have been also found in stacked [Ginolfi et al. \(2020\)](#) and individual ([Fujimoto et al. in prep.](#)) galaxies using data of the ALPINE survey (ALMA LP, PI: O. Lefevre, [Le Fèvre et al. 2019](#)). Moreover, since the galaxies considered by [F19](#) have SFR between 10 and 100  $M_{\odot}$ , their discovery suggests that a cold carbon gas halo universally exists even around early “normal” galaxies. [Rybak et al. \(2019\)](#) found a significantly extended [C II] emission around SDP.81, a  $z = 3.042$  gravitationally lensed dusty star-forming galaxy. They report that  $\approx 50$  per cent of [C II] emission arises outside the FIR-bright region of the galaxy.

The previous findings resonate with similar existing evidences of extended Ly $\alpha$  halos around high- $z$  galaxies. By using 26 spectroscopically confirmed Ly $\alpha$ -emitting galaxies at  $3 < z < 6$ , [Wisotzki et al. \(2016\)](#) found that most of these low-mass systems show the presence of extended Ly $\alpha$  emission that are 5-15 times larger than the central UV continuum sources as seen by HST. In a follow-up work, [Wisotzki et al. \(2018\)](#) demonstrated that the projected sky coverage of Ly $\alpha$  halos of galaxies at  $3 < z < 6$  approaches 100%. Ly $\alpha$  intensity mapping experiments confirm this scenario. [Kakuma et al. \(2019\)](#) identify very diffuse Ly $\alpha$  emission with  $3\sigma$  significance at  $> 150$  comoving kpc away from Lyman Alpha Emitters at  $z = 5.7$ , i.e. beyond the virial radius of star-forming galaxies whose halo mass is  $10^{11} M_{\odot}$ . These independent evidences for extended halos pose their existence on very solid grounds.

The discovery of extended [C II] halos around early galaxies raise three challenging physical questions: (a) by what means has carbon (and presumably other heavy elements) been transported to these large distances from the galactic centre where it was produced by stellar nucleosynthesis; (b) how can carbon atoms remain in a singly ionized state in the presence of the cosmic UV background produced by galaxies and quasars, rather than being found in higher ionization states as routinely observed in low-density, unshielded environments such as e.g. the Ly $\alpha$  forest ([D’Odorico et al. 2013](#)); (c) what is the carbon mass required to explain the observed [C II] emission ([Vallini et al. 2015](#); [Pallottini et al. 2015](#); [Kohandel et al. 2019](#)) at these high redshifts? Such questions make clear that the origin, structure and survival of [C II] halos represent a formidable problem in galaxy evolution.

The existence of extended C II halos might also affect profoundly our views on metal enrichment of the intergalactic medium ([D’Odorico et al. 2013](#); [Meyer et al. 2019](#); [Becker et al. 2019](#)), and have an impact on future intensity mapping ([Yue et al. 2015](#); [Yue & Ferrara 2019](#)) experiments (for an overview, see [Kovetz et al. 2017](#) and references therein) specifically targeting [C II] signal from the galaxy population predominantly responsible for cosmic reionization. Extended halos, in fact, might leave a very specific signature in the 1-halo term of the [C II] power spectrum clustering signal.

The problem is particularly severe as even the most physically-rich, zoom-in simulations ([Pallottini et al. 2017b](#); [Arata et al. 2018](#)) fail to reproduce the observed [C II] surface brightness. These independent studies almost perfectly agree in predicting a [C II] halo profile that drops very rapidly beyond 2 kpc, and, at 8 kpc from the centre, has a [C II] luminosity  $\approx 10\times$  below that observed. Differ-

ent scenarios have been proposed to explain the presence of abundant [C II] emission at large galactocentric distances: satellite galaxies, outflows, cold accreting streams. The last scenario (cold accreting streams that flow from the CGM into the galaxy) finds little support from theoretical considerations and observations, since there is no compelling evidence for their presence, and because they are expected to be metal poor. The emission from a population of faint galaxy satellites is in principle a good candidate for solving the problem. However, while faint satellite galaxies are indeed seen in simulations, they do not provide a sufficient luminosity to account for the emission ([Pallottini et al. 2019](#)). Moreover, this answer appears to be in contrast with observations, since as shown in [F19](#) (Sec. 4.3), the ratio between [C II] emission and the total SFR surface density is not compatible with the hypothesis of dwarf galaxies.

Thus, it appears that the outflow scenario is the most promising explanation. According to this hypothesis, the halos represent an incarnation of outflows driven by powerful episodes of star formation and/or AGN activity occurring in high- $z$  galaxies. In this context, we note the  $z \approx 6$  quasar host galaxy showing the extended halo detected by [Cicone et al. \(2015\)](#), is also known to have a powerful AGN-driven outflow. Evidences for the presence of outflows around normal galaxies at  $z \approx 6$  are further suggested by ALMA observations in a sub-set of the F19 sample ([Gallerani et al. 2018](#)), and now further supported by the ALPINE Large Program ([Ginolfi et al. 2020](#)). Fast outflows have been tentatively identified in  $z = 5 - 6$  galaxies also using deep Keck metal absorption line spectra ([Sugahara et al. 2019](#)). According to both observations and detailed simulations, outflows often present a multi-phase structure composed by different outflow modes ([Murray 2011](#); [Hopkins et al. 2014](#); [Muratov et al. 2015](#); [Heckman & Thompson 2017](#)). Hot modes ( $T \approx 10^{6-7}$  K) are often fast and highly-ionized, while cold modes ( $T \approx 10^{2-4}$  K) are neutral and slower. Cold modes are often formed by radiative cooling of the hot gas outflowing from the galaxy. Recent works highlight the role of this catastrophic cooling in regulating the feedback mechanisms in super-star clusters ([Gray et al. 2019](#)), and galaxies ([Li & Tonnesen 2019](#)), and suggest that the outflow mass budget is likely to be dominated by cold gas. An outflow that undergoes catastrophic cooling could transport carbon in singly ionized form away from the galaxy, and the [C II] emission could arise from suitable conditions of high density and low temperature.

Here we explore this idea using a semi-analytical model for a cooling outflow and simulating the resulting [C II] emission in order to compare it directly with observations from [F19](#). We conclude that outflows represent a possible answer to the origin of the observed [C II] halos, and we show that – in spite of the simplifications required to implement this idea – the results are robust and provide at least a reliable framework for a more detailed work.

The paper is organized as follows: in [Sec. 2](#) and [Sec. 3](#) we present the hydrodynamical model for the outflow making different physical assumptions; in [Sec. 4](#) we discuss the resulting structure for the outflows in terms of the loading parameters; in [Sec. 5](#) we work on modelling the [C II] emission; in [Sec. 6](#) we compare the results from our model with the observational data and with other previous works; conclusions are given in [Sec. 7](#).

## 2 ADIABATIC OUTFLOWS

To model gas outflows from galaxies, we start by considering the classical study by [Chevalier & Clegg \(1985, hereafter CC85\)](#). Among the many necessary simplifying assumptions made by the authors, the most critical one for our study is that the flow is adiabatic and cools only by expansion. Therefore, in the next Sec. we will increment the CC85 model by including both gravity and radiative cooling terms, following also similar work by [Thompson et al. \(2015\)](#).

Our aim is to derive physically-motivated density, velocity and temperature radial profiles of the outflow as a function of model parameters. These quantities will form the basis for the prediction of [C II] luminosity that we present in Sec. 5.

The CC85 model describes a spherically symmetric, hot, and steady wind that drives energy and mass – injected by stellar winds and supernovae (SNe) – out of the galaxy. Energy and mass are uniformly deposited by the central stellar cluster in a region of radius  $R$  at a constant rate, equal to  $\dot{E}$  and  $\dot{M}$ , respectively.

We relate these quantities to the star formation rate (SFR) via two efficiency parameters,  $\alpha$  and  $\eta$ , such that

$$\dot{M} = \eta \text{SFR} \quad (1a)$$

$$\dot{E} = \alpha \nu E_0 \text{SFR}, \quad (1b)$$

where  $E_0 = 10^{51}$  erg is the SN explosion energy, and  $\nu = 0.01 \text{M}_\odot^{-1}$  is the number of SNe per unit stellar mass formed. The mass loading factor,  $\eta$ , heavily affects the gas density, and thus the general behaviour of the system. The dependence of the physical variables on  $\alpha$  is not as strong, and to a first approximation it can be fixed. For this reason, we have decided to set  $\alpha = 1$  (chosen accordingly to outflow observations by [Strickland & Heckman 2009](#)), and retain  $\eta$  as the only parameter in our model.

Outside the injection region ( $r > R$ ), mass, momentum, and energy are conserved; the wind expands against the vacuum (we neglect the presence of the interstellar medium). Additional simplifications include neglecting the presence of viscosity and thermal conduction. The latter is generally a fair assumption, apart from some extreme regimes involving low values of  $\eta$  (see [Thompson et al. 2015](#), in particular Sec. 2.2 therein).

As already mentioned, in this Sec. we neglect both radiative cooling and gravity. The first assumption is equivalent to the condition that the cooling time,  $\tau$ , largely exceeds the advection time (i.e. a gas parcel is removed from the system before it is able to radiate). Neglecting gravity implies that the outflow velocity is much larger than centrifugal velocity,  $v_c$ , from the system. We will release these assumptions in the next Sections.

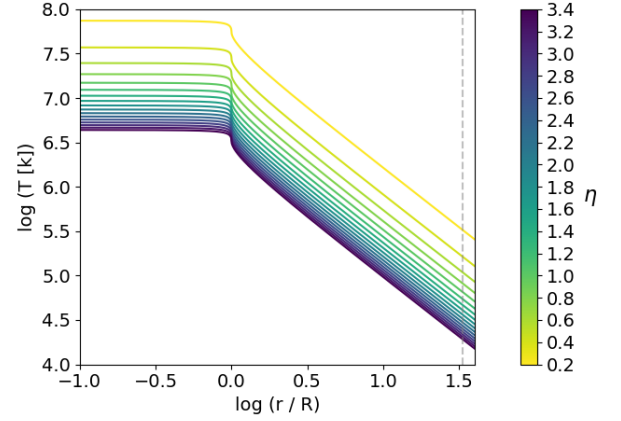
With these hypothesis, we write the relevant hydrodynamical equations assuming a spherically symmetric, steady-state flow as follows:

$$\frac{1}{r^2} \frac{d}{dr} (r^2 v \rho) = q \quad (2a)$$

$$\rho v \frac{dv}{dr} = -\frac{dp}{dr} - vq \quad (2b)$$

$$\frac{1}{r^2} \frac{d}{dr} \left[ r^2 \rho v \left( \rho \frac{v^2}{2} + \frac{\gamma}{\gamma-1} \frac{p}{\rho} \right) \right] = Q, \quad (2c)$$

where  $\rho, v, p$  are the gas density, velocity and pressure; the



**Figure 1.** Outflow radial temperature ( $T$ ) as a function of the radius ( $r$ ) in the adiabatic model. The curves are calculated for  $R = 300$  pc and  $\text{SFR} = 50 \text{M}_\odot \text{yr}^{-1}$ . Different colors indicate different values of the mass loading factor ( $\eta$ ). The gray dashed line indicates the distance  $r = 10$  kpc.

mass input rate  $q$  and energy input rate  $Q$ , assumed to be constant, take the form

$$\begin{cases} q = \frac{3\dot{M}}{4\pi R^3}, & r \leq R \\ q = 0, & r > R \end{cases} \quad \begin{cases} Q = \frac{3\dot{E}}{4\pi R^3}, & r \leq R \\ Q = 0, & r > R \end{cases} \quad (3)$$

These equations are complemented by an adiabatic equation of state (EoS) with index  $\gamma = 5/3$ .

Solutions can be found by imposing the appropriate boundary conditions:  $v(0) = 0$ ,  $p(r \rightarrow +\infty) = \rho(r \rightarrow +\infty) = 0$ , and matching the derivatives of the solutions at  $r = R$  (critical point). Using the Mach number –  $\mathcal{M} = v/c_s$  where  $c_s^2 = \gamma p/\rho$  is the gas sound speed – the conditions can be expressed as

$$\left( \frac{3\gamma + 1/\mathcal{M}^2}{1 + 3\gamma} \right)^{-(3\gamma+1)/(5\gamma+1)} \left( \frac{\gamma - 1 + 2/\mathcal{M}^2}{1 + \gamma} \right)^{(\gamma+1)/(2(5\gamma+1))} = \frac{r}{R} \quad (4)$$

$$\mathcal{M}^{2/(\gamma-1)} \left( \frac{\gamma - 1 + 2/\mathcal{M}^2}{1 + \gamma} \right)^{(\gamma+1)/(2(\gamma-1))} = \left( \frac{r}{R} \right)^2, \quad (5)$$

where eq. 4 (eq. 5) applies to the inner,  $r < R$  (outer,  $r > R$ ) region.

From the Mach number and the boundary conditions, we can directly obtain the profiles for  $v$ ,  $n$ ,  $P$ , and  $T$ . In Fig. 1 we show the outflow temperature profile for different values of the mass loading parameter  $\eta$  in the range 0.2-3.4; note that we use the values  $R = 300$  pc and  $\text{SFR} = 50 \text{M}_\odot \text{yr}^{-1}$ . For  $r < R$  the temperature is roughly constant at  $10^{7-8}$  K, with the exact value depending on  $\eta$ : more mass-loaded outflows are cooler. Beyond  $R$ , the temperature drops purely due to adiabatic cooling following the characteristic behavior  $T \propto r^{-4/3}$ .

We clearly see that an adiabatic outflow cannot account for the observed [C II] halo emission. In fact,  $T > 10^5$  K within the central 10 kpc for all models. At these temperatures C II ions are still largely collisionally ionized to higher ionization states, with the consequent suppression of the 158  $\mu\text{m}$  line emission. It is then necessary to introduce cooling

effects (and gravity) in the model. This is discussed in the next Sec..

### 3 COOLING OUTFLOWS

We follow [Thompson et al. \(2015\)](#), and rewrite the hydrodynamical equations introducing the net (i.e. cooling – heating) cooling function,  $\Lambda(T, n, r)$ , and an external gravitational potential,  $\Phi$ , is provided by the dark matter halo, whose density distribution is approximated by an isothermal sphere for which  $\rho(r) \propto r^{-2}$ . The gravitational potential is parameterized via the galaxy circular velocity

$$v_c = \sqrt{\frac{GM(r)}{r}}. \quad (6)$$

Since for an isothermal sphere  $M(r) \propto r$ , then  $v_c = \text{const}$ . We use  $v_c = 175 \text{ km s}^{-1}$  as the fiducial value for the galaxies in the [F19](#) sample, but we also explore the dependence of the results on this parameter in [Sec. 6.1](#). The boundary conditions at  $r = R$  are obtained by integrating the [CC85](#) equations in the inner region.

Within the inner region we adopt the standard [CC85](#) model which neglects radiative losses. This is justified by the fact that the temperature ([Fig. 1](#)) is approximately constant around  $10^{7-8} \text{ K}$ : at these temperatures the cooling time is far greater than the advection time. In addition, we neglect gravity effects in the inner region as they affect only very marginally the boundary conditions ([Bustard et al. 2016](#)). Writing explicitly the solutions for the physical variables in the inner region, we cast the boundary conditions in the form:

$$\rho(R) = \frac{\sqrt{2}}{4\pi} \frac{\dot{M}^{3/2}}{\dot{E}^{1/2}} \frac{1}{R^2} \propto \text{SFR} \eta^{3/2}, \quad (7a)$$

$$p(R) = \frac{3\sqrt{2}}{40\pi} \frac{\dot{M}^{1/2} \dot{E}^{1/2}}{R^2} \propto \text{SFR} \eta^{1/2}, \quad (7b)$$

$$v(R) = \frac{1}{\sqrt{2}} \frac{\dot{E}^{1/2}}{\dot{M}^{1/2}} \propto \eta^{-1/2}, \quad (7c)$$

where the r.h.s terms are obtained using [eqs. 1](#).

We now focus on the outer region where  $q = Q = 0$ . There, the mass, momentum and energy conservation equations read

$$\frac{1}{r^2} \frac{d}{dr} (r^2 v \rho) = 0, \quad (8a)$$

$$\rho v \frac{dv}{dr} = -\frac{dp}{dr} - \rho \frac{d\Phi}{dr}, \quad (8b)$$

$$\left[ \frac{1}{T} \frac{dT}{dr} - (\gamma - 1) \frac{1}{\rho} \frac{d\rho}{dr} \right] v k_B T = -(\gamma - 1) n \Lambda. \quad (8c)$$

Combining the three equations we get a first order system of ODE that can be integrated numerically to solve for the variables  $\rho$ ,  $v$ , and  $T$ . These equations can be written in terms of the flow Mach number  $\mathcal{M}$ , the gravitational Mach

number  $\mathcal{M}_g = v_c/c_s$ , and the cooling time  $\tau = k_B T/n\Lambda$  as:

$$\frac{d \log \rho}{d \log r} = 2 \left( \frac{\mathcal{M}^2 - \mathcal{M}_g^2/2}{1 - \mathcal{M}^2} \right) + \frac{r}{\lambda_c} \left( \frac{1}{1 - \mathcal{M}^2} \right) \quad (9a)$$

$$\frac{d \log v}{d \log r} = \left( \frac{\mathcal{M}_g^2 - 2}{1 - \mathcal{M}^2} \right) + \frac{r}{\lambda_c} \left( \frac{1}{1 - \mathcal{M}^2} \right) \quad (9b)$$

$$\frac{d \log T}{d \log r} = 2(\gamma - 1) \left( \frac{\mathcal{M}^2 - \mathcal{M}_g^2/2}{1 - \mathcal{M}^2} \right) - \frac{r}{\lambda_c} \left( \frac{1 - \gamma \mathcal{M}^2}{1 - \mathcal{M}^2} \right), \quad (9c)$$

where  $\lambda_c = [\gamma/(\gamma - 1)]v\tau$  is the cooling length.

#### 3.1 Radiation fields

In order to solve [eqs. 9](#) it is necessary to specify the functional form of the net cooling function  $\Lambda(T, n, r)$ . This function is affected by the presence of a UV radiation field in two ways: (a) heating due to photoelectric effect on gas and/or dust; (b) photoionization of cooling species which result in a lower emissivity of the gas. Both effects tend to decrease the value of  $\Lambda$  at a given temperature; therefore they should be carefully modelled in order to reliably predict the emission properties of the outflow.

There are two main sources of UV radiation in the galactic halo environment: (a) stars in the parent galaxy, and (b) the cosmic UV background (UVB) produced by galaxies and quasars on cosmological scales. While the stellar flux decreases with distance  $r$  from the galaxy, the UVB can be considered to a good approximation as spatially constant at a given redshift. The relative intensity of the two radiation fields depends also on the fraction of ionizing photons produced by stars that are able to escape into the halo, i.e. the so-called escape fraction,  $f_{\text{esc}}$ .

If  $f_{\text{esc}}$  is large, we show below that the galactic radiation field dominates the UVB up to distances that are considerably larger than those ( $\approx 10 \text{ kpc}$ ) relevant here. However, local and high- $z$  observations (for a review see [Dayal & Ferrara 2018](#); [Inoue et al. 2006](#)) indicate that most systems are characterized by very low ( $\lesssim$  few percent) escape fractions. Given the present uncertainties we consider the case  $f_{\text{esc}} = 0$  as the fiducial one, but we also explore the implications of  $f_{\text{esc}} = 0.2$ , the value usually invoked by most reionization studies ([Mitra et al. 2015](#); [Robertson et al. 2015](#); [Mitra et al. 2018](#)) to bracket all possible configurations. We note that if the properties of [C II] halos turn out to be very sensitive to  $f_{\text{esc}}$ , they might be used as a novel way to measure  $f_{\text{esc}}$  at early times.

To precisely evaluate the heating and ionization effects produced by the presence of radiation fields it is necessary to compute the corresponding H and He photoionization rates, as well as the photodissociation of  $\text{H}_2$  molecules, a key cooling species, by Lyman-Werner (LW, 912-1108 Å) photons. We concentrate on this task in the next two Sec.s.

##### 3.1.1 Galactic flux

We use the data tables from [STARBUST99](#) ([Leitherer et al. 1999](#)) to get the specific luminosity,  $L_\nu$  of the galaxy (stars + nebular emission). We choose a [Salpeter \(1955\)](#) IMF between 1 and  $100 M_\odot$ , using Geneva tracks ([Schaerer et al. 1993](#)). Luminosities are computed for a continuous star formation

Species	$\nu_T$ ( $10^5 \text{ cm}^{-1}$ )	$\alpha_T$ ( $10^{-18} \text{ cm}^2$ )	$a$	$b$
H	1.097	6.3	2.99	1.34
He	1.983	7.83	2.05	1.66
C I	0.909	12.2	2.0	3.35
C II	1.97	4.60	3.0	1.95

**Table 1.** Photoionization cross-section parameters for H, He, and C entering eq. 12. Data from Tielens (2005).

rate of SFR =  $50 M_{\odot} \text{ yr}^{-1}$  (fiducial value). The specific ionizing photon rate from the galaxy at radius  $r$  and frequency  $\nu$  is then:

$$\dot{N}_{\nu} = \frac{L_{\nu}}{h\nu} f_{\text{esc}}. \quad (10)$$

The corresponding photoionization rate for the  $i$ -species ( $i = \text{H, He, C}$ ) is

$$\Gamma_i = \int_{\nu_{T,i}}^{+\infty} \frac{\dot{N}_{\nu}}{4\pi r^2} \alpha_{\nu}^i d\nu, \quad (11)$$

where  $\alpha_{\nu}^i$  is the photoionization cross-section of a given element, and the integration is performed from the ionization threshold at frequency  $\nu_{T,i}$ . We use the following fit for  $\alpha_{\nu}^i$ :

$$\alpha_{\nu} = \alpha_T \left[ b \left( \frac{\nu}{\nu_T} \right)^{-a} + (1-b) \left( \frac{\nu}{\nu_T} \right)^{-a-1} \right] \text{ for } \nu > \nu_T. \quad (12)$$

The adopted values of  $(\alpha_T, \nu_T, a, b)$  for the three species are given in Tab. 1. For H and He we obtain

$$\Gamma_{\text{H}}(r) = 2.73 \times 10^{-7} \left( \frac{\text{kpc}}{r} \right)^2 f_{\text{esc}} \text{ s}^{-1}, \quad (13a)$$

$$\Gamma_{\text{He}}(r) = 8.85 \times 10^{-8} \left( \frac{\text{kpc}}{r} \right)^2 f_{\text{esc}} \text{ s}^{-1}. \quad (13b)$$

Finally, we compute the  $\text{H}_2$  photodissociation rate by LW photons. To this aim we use the relation given by Aninos et al. (1997) linking the radiation field specific intensity at the LW band center (12.87 eV) with the photodissociation rate

$$\Gamma_{\text{H}_2} = 1.38 \times 10^9 \text{ s}^{-1} \left( \frac{J_{\nu}(h\nu = 12.87 \text{ eV})}{\text{erg s}^{-1} \text{ cm}^{-2} \text{ Hz}^{-1} \text{ sr}^{-1}} \right); \quad (14)$$

for our choice of the stellar population, and hence  $J_{\nu}(h\nu = 12.87 \text{ eV})$ , this translates into:

$$\Gamma_{\text{H}_2}(r) = 1.42 \times 10^{-8} \left( \frac{\text{kpc}}{r} \right)^2 f_{\text{esc}} \text{ s}^{-1}. \quad (15)$$

For simplicity we are assuming the same value of  $f_{\text{esc}}$  for ionizing and non-ionizing (LW) photons. As the two escape fractions are influenced by different physical processes, they might however be slightly different.

### 3.1.2 Cosmic UV background

We repeat the above calculation for the UVB at  $z = 6$  assuming a Haardt & Madau (2012) spectral shape and specific intensity,  $J_{\nu}$ , or

$$\Gamma_{\text{UVB},i} = 4\pi \int_{\nu_{T,i}}^{+\infty} \frac{J_{\nu}}{h\nu} \alpha_{\nu}^i d\nu. \quad (16)$$

The integral gives the H and He photoionization rates,  $(\Gamma_{\text{UVB,H}}, \Gamma_{\text{UVB,He}}) = (1.75, 1.25) \times 10^{-13} \text{ s}^{-1}$ . Using again eq.

16, and the specific intensity at  $h\nu = 12.87 \text{ eV}$ , we get a LW  $\text{H}_2$  photo-dissociation rate  $\Gamma_{\text{UVB,H}_2} = 2.05 \times 10^{-13} \text{ s}^{-1}$ .

By equating the photoionization rates  $\Gamma$  and  $\Gamma_{\text{UVB}}$ , we compute the ‘‘proximity’’ radius  $R_p$  within which the flux from the galaxy dominates with respect to the cosmic UVB. We find that, for  $f_{\text{esc}} = 0.2$ ,  $R_p \simeq (250, 168) \text{ kpc}$  for (H, He), respectively. This implies that the ionization state of the observed outflow, extending to about 10 kpc, is completely governed by the galactic flux. Obviously, if  $f_{\text{esc}} = 0$  the UVB is the only source of photons.

### 3.2 Cooling function

Having derived the values of the photoionization and photodissociation rates at each radius, and assuming a solar metallicity  $Z = Z_{\odot}$ , we derive the value of the net (i.e. cooling – heating) cooling function  $\Lambda(T, n, r)$  using the data tabulated in Gnedin & Hollon (2012). Their model includes the effects of different cooling mechanisms, such as metal line cooling, atomic cooling, free-free, photoelectric effect on H, He, and dust.

The results are shown in Fig. 2 as a function of  $T$  for different gas densities,  $n$ , and two values of the escape fraction,  $f_{\text{esc}} = 0, 0.2$ . As already mentioned, if  $f_{\text{esc}} = 0$  the ionizing photons are those from the UVB whose intensity at  $z = 6$  is given by the Haardt & Madau (2012) model. For  $f_{\text{esc}} = 0.2$  the cooling function depends explicitly on the radius  $r$ : for displaying purposes, we fix  $r = 1 \text{ kpc}$ .

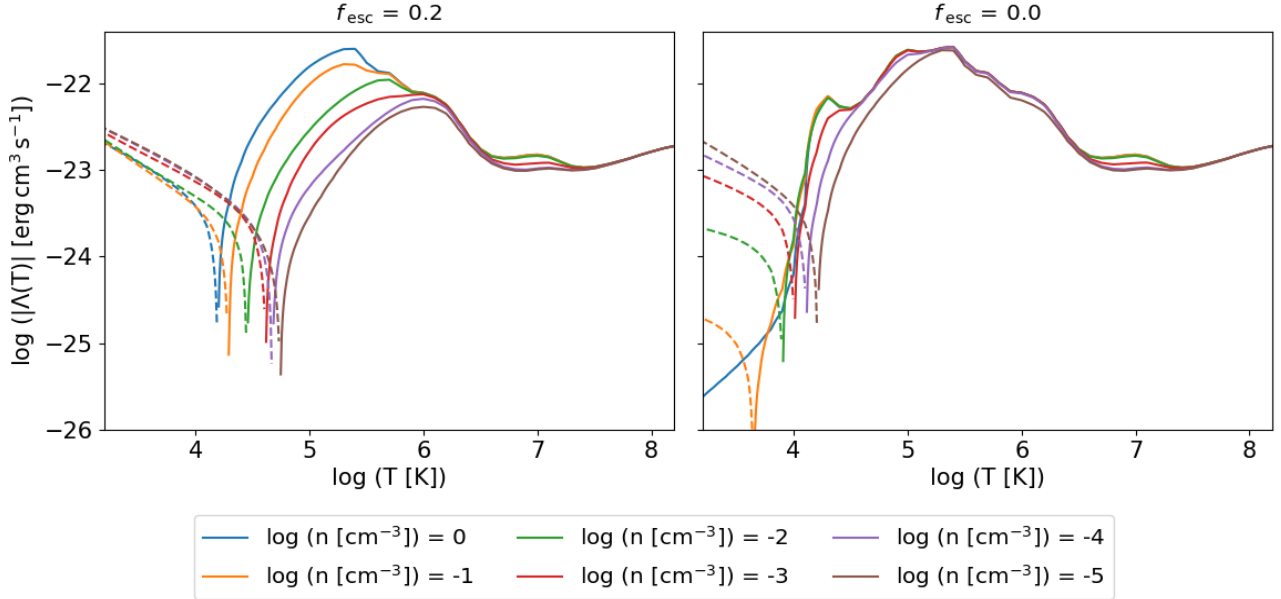
There are striking differences between the two  $f_{\text{esc}}$  cases. For  $f_{\text{esc}} = 0.2$  (left panel) we see that the main effect of the strong galactic flux at a distance of 1 kpc is to dramatically depress the ability of the gas to cool in the temperature range  $10^4\text{--}6 \text{ K}$ , particularly for low gas densities. The decrease of the peak is mostly produced by the fact that H (and partly also He) atoms, providing the main cooling channel via the excitation of the  $\text{Ly}\alpha$  transition, become ionized and therefore unable to radiate efficiently. The equilibrium temperature, given by the condition  $\Lambda = 0$ , is identified by the spikes in the curves, where a transition from a cooling to a heating-dominated regimes at lower  $T$  takes place. The equilibrium values range in  $\log T = 4.1\text{--}4.7$ , with the warmer solutions applying to lower densities.

The situation is considerably different if ionizing radiation from the galaxy is not allowed to escape in the halo ( $f_{\text{esc}} = 0$ , right panel). In this case the much lower intensity of the UVB alone produces only a very limited suppression of the cooling function, and only for low densities,  $n < 0.01 \text{ cm}^{-3}$ . Equilibrium temperatures are consistently lower for  $f_{\text{esc}} = 0$ , due to the decreased photoheating provided by the UVB.

We conclude that the cooling function is heavily dependent on  $f_{\text{esc}}$ . Given that in turn the observable properties of the outflow, as e.g. its [C II] emission, depend strongly on gas temperature, this raises the interesting possibility that outflows might be used to indirectly probe  $f_{\text{esc}}$ . We will return to this point later on.

## 4 OUTFLOW STRUCTURE

We present in Fig. 3 the thermodynamic structure of the outflow as derived from the numerical solution of the hydro-



**Figure 2.** Net cooling function ( $\Lambda(n, T, r)$ ) as a function of the temperature ( $T$ ), for different values of the gas density ( $n$ ). Note that the absolute value of  $\Lambda$  is plotted: solid (dashed) lines represent positive (negative) values, i.e. net cooling (heating). The data for the cooling rates are taken from [Gnedin & Hollon \(2012\)](#), and we have used as input the values of the photoionization and photodissociation rates  $\Gamma_{\text{H}}$ ,  $\Gamma_{\text{He}}$ , and  $\Gamma_{\text{LW}}$  derived in Sec. 3.1. *Left panel:* case for  $f_{\text{esc}} = 0.2$ , in which the ionizing radiation field is given by the sum of the flux from the galaxy and the cosmic UVB at  $z = 6$ . Results are shown at a galactocentric radius  $r = 1$  kpc. *Right:* case for  $f_{\text{esc}} = 0$ . Ionizing radiation is only provided by the UVB.

dynamical equations (eq.s 9). In the following we first discuss the case  $f_{\text{esc}} = 0.2$ , and then consider the case  $f_{\text{esc}} = 0$ .

#### 4.1 Case for $f_{\text{esc}} = 0.2$

The first column of Fig. 3 shows the radial profiles of the key hydrodynamical variables,  $v, n, T$  for  $f_{\text{esc}} = 0.2$  for different values of the mass load parameter,  $\eta$ .

For  $\eta \lesssim 1$  the radial asymptotic dependencies are still  $v \approx \text{const.}$  and  $n \propto r^{-2}$  as in the no gravity, no cooling case. However, when  $\eta \gtrsim 1$  the initial density is high enough for gravity to become important. This reduces the velocity up to a stalling radius,  $r_{\text{stop}}$ , where the velocity drops to zero. The position of the stalling point moves closer to the galaxy as  $\eta$  increases.

Cooling introduces new, striking features in the temperature profiles shown in the lower panels of Fig. 3. For high values of the mass loading factor ( $\eta \gtrsim 1$ ) the gas starts cooling at a distance  $r_{\text{cool}}$  that gets smaller as  $\eta$  increases. The cooling is quite rapid, and it stops at the equilibrium temperature (see Fig. 2) around  $10^4$  K. Beyond the cooling radius the outflow is subject to a quasi-isothermal expansion.

#### 4.2 Case for $f_{\text{esc}} = 0$

We show the radial profiles of the thermodynamic quantities for  $f_{\text{esc}} = 0$  in the right column of Fig. 3, allowing a direct comparison with the  $f_{\text{esc}} = 0.2$  case (i.e. UVB only).

The velocity and density profiles are very similar to the

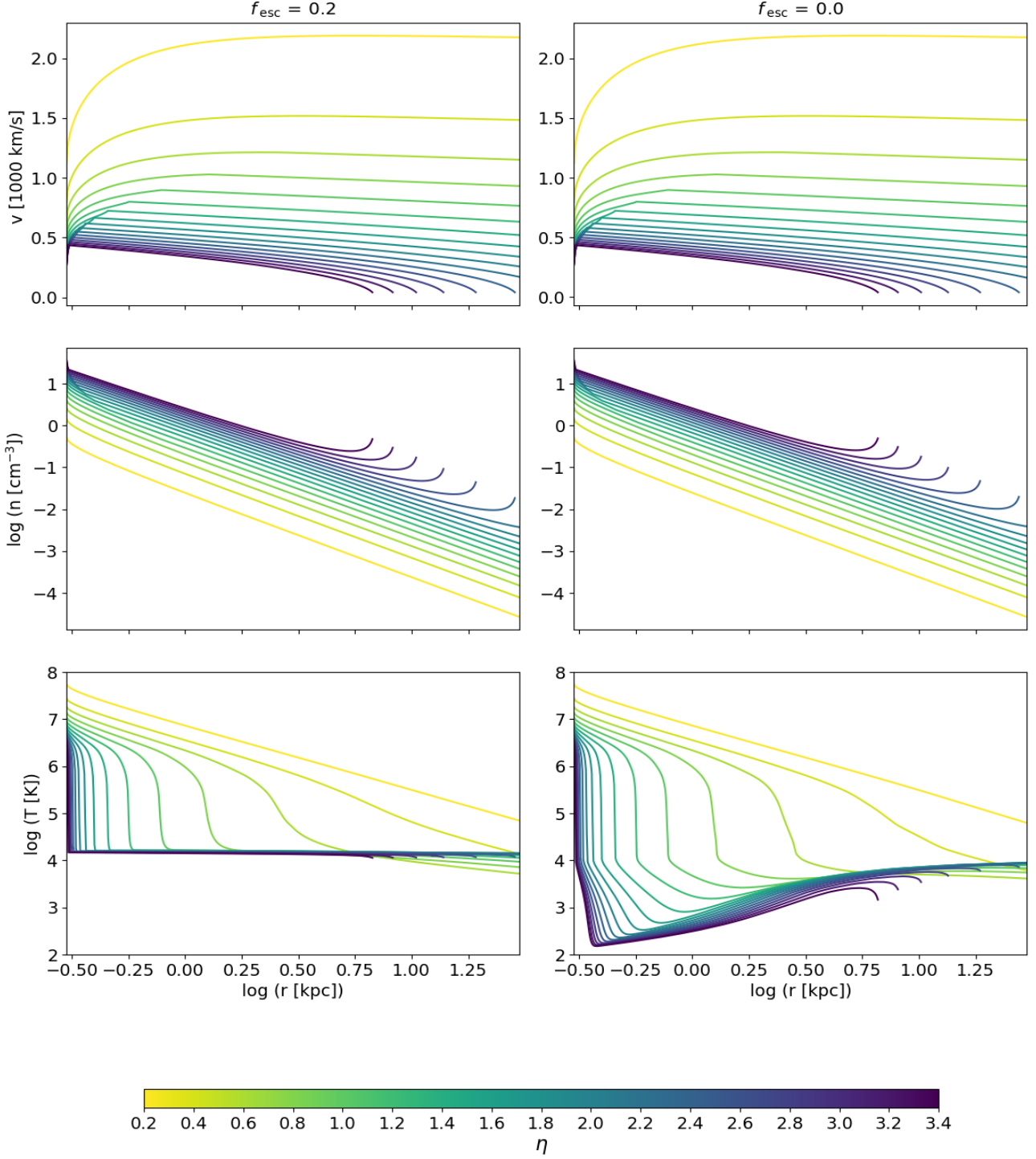
ones for  $f_{\text{esc}} = 0.2$ , i.e. they are not significantly affected by the presence of an ionizing galactic flux. On the other hand, the temperature shows a different behaviour beyond  $r_{\text{cool}}$  as expected from the different shapes of the cooling functions (Fig. 2). For  $f_{\text{esc}} = 0$  the gas is able to cool down to a temperature of a few hundred degrees. At larger radii the gas slowly heats up as the net cooling function takes negative values (i.e. the photoionization heating takes over as density decreases). As we will show in the following paragraph, temperatures of a few  $\times 100$  K allow a significant presence of C II, and thus a potentially observable [C II] emission.

#### 4.3 Ionization structure

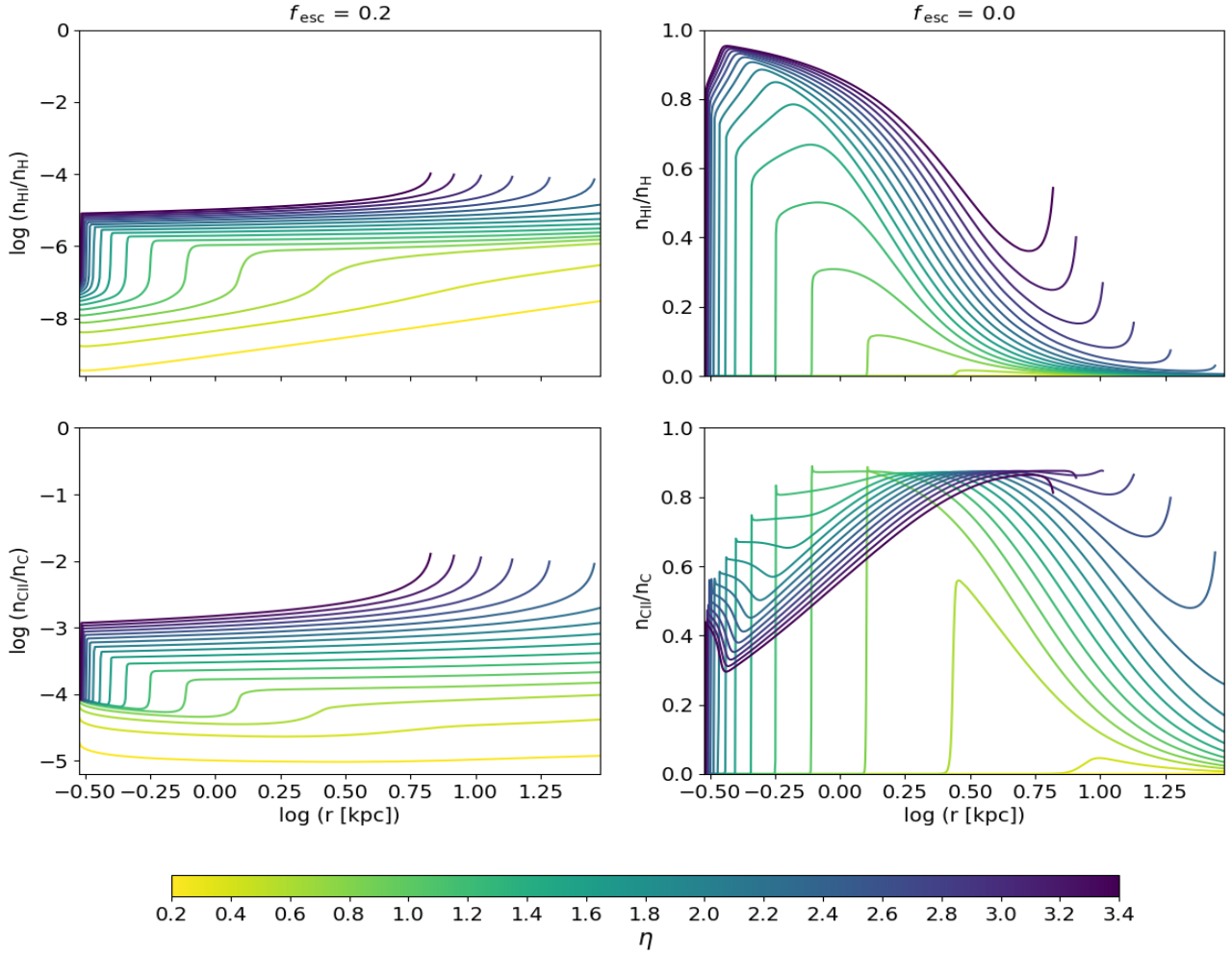
From the above density and temperature profiles of the outflow we can now compute the ionization state of different species as a function of the radial distance from the galaxy. We present the details of the ionization equilibrium calculations for H and C in App. A.

The resulting ionization radial profiles are shown in Fig. 4. For  $f_{\text{esc}} = 0.2$  both H and C atoms are largely in the form of H II and C III. In particular, the fraction of singly ionized carbon is  $x_{\text{CII}} = n_{\text{CII}}/n_{\text{C}} < 10^{-3}$ . In these conditions, [C II] line emission is strongly suppressed. For this reason, in the following we will concentrate on the case  $f_{\text{esc}} = 0$ , which gives the most promising results.

Looking at the right column of Fig. 4 ( $f_{\text{esc}} = 0$ ), we see that these models can produce considerable amounts of C II. As the gas cools to a few hundred degrees K beyond  $r_{\text{cool}}$  carbon recombines, and  $x_{\text{CII}} \gtrsim 0.5$  in most cases but the lowest values of  $\eta$ . The outflow is essentially neutral as H



**Figure 3.** Radial profiles of key outflow thermodynamical variables obtained for the cooling/gravity model (eq. 9b). Shown are the two cases  $f_{\text{esc}} = 0.2$  (left column), and  $f_{\text{esc}} = 0$  (right). *Top row:* Velocity ( $v$ ). For high values of the mass loading factor  $\eta$ , gravity slows down the outflow until a stalling radius at which  $v = 0$  is reached. *Middle:* Density ( $n$ ). The radial dependence of the density is generally  $n \propto r^{-2}$ , but its value increases as the gas slows down due to gravity. *Bottom:* Temperature ( $T$ ). Note the different temperature profiles beyond cooling radius. For  $f_{\text{esc}} = 0$  the outflow cools to lower temperatures and reaches the equilibrium value only at a much larger radii.



**Figure 4.** Outflow radial ionization profiles. Shown are the two cases  $f_{\text{esc}} = 0.2$  (left column), and  $f_{\text{esc}} = 0$  (right). Note the linear scale in the right panels. *Top row:* Neutral hydrogen fraction (eq. A3). *Bottom:* Singly ionized carbon fraction from (eq. A5).

has also largely recombined. As the outflow temperature increases again towards larger radii C II ions are collisionally ionized, and their abundance decreases, albeit remaining significant. Thus, cooling outflows can potentially explain the observed extension of [C II] halos around early galaxies.

## 5 [C II] LINE EMISSION

To enable a direct comparison between our model and the observed [C II] surface brightness the last step is to derive the expected [C II] line emission from the computed  $x_{\text{CII}}$  and  $T$  radial profiles.

Similarly to other works (Vallini et al. 2015; Kohandel et al. 2019; Ferrara et al. 2019), we use an analytical model to compute the [C II] line emission. We follow Tielens (2005) and write the local [C II] emissivity in the low-density regime as

$$\Lambda_{\text{CII}} = 2.1 \times 10^{-23} (1 + 420 x_{\text{CII}}) e^{-92/T} \text{ erg cm}^3 \text{ s}^{-1}. \quad (17)$$

Since [C II] emission is typically optically thin (Osterbrock

et al. 1992), the [C II] surface density,  $\Sigma_{\text{CII}}$ , along a radial line of sight is simply obtained by integrating the emissivity,

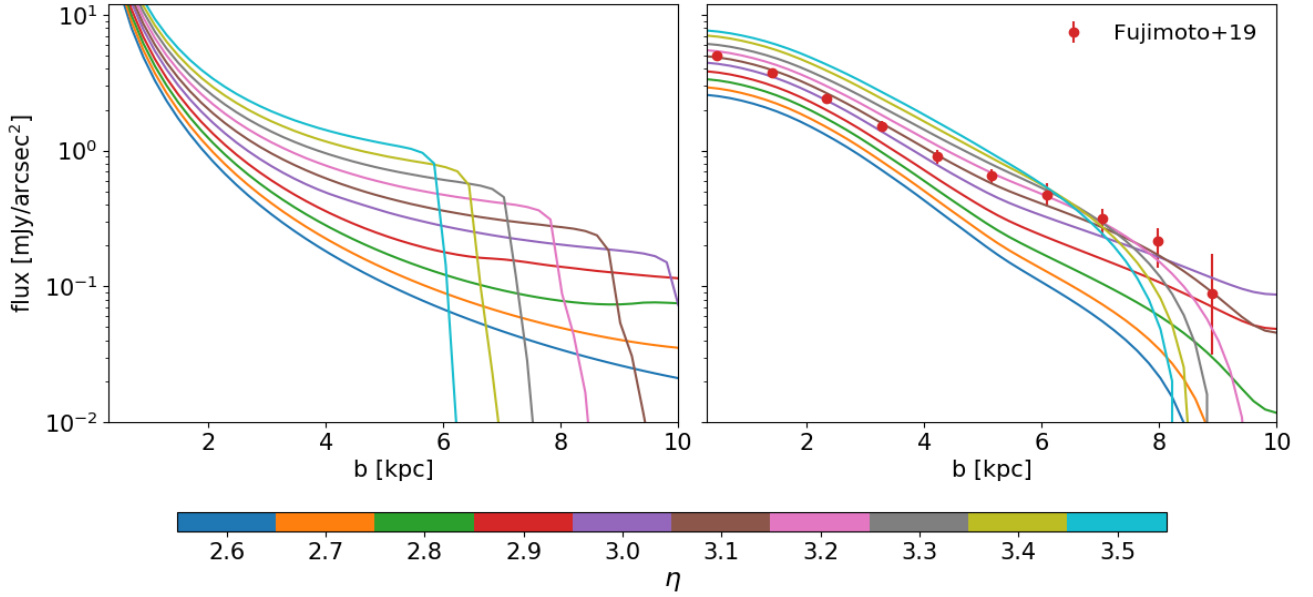
$$\Sigma_{\text{CII}}(r) = \int n^2(r) \Lambda_{\text{CII}}(T(r)) dr \quad (18)$$

It is useful to express  $\Sigma_{\text{CII}}$  as function of the impact parameter  $b$ , i.e. the distance between the line of sight and the centre of the galaxy. Eq. 18 can then be written as

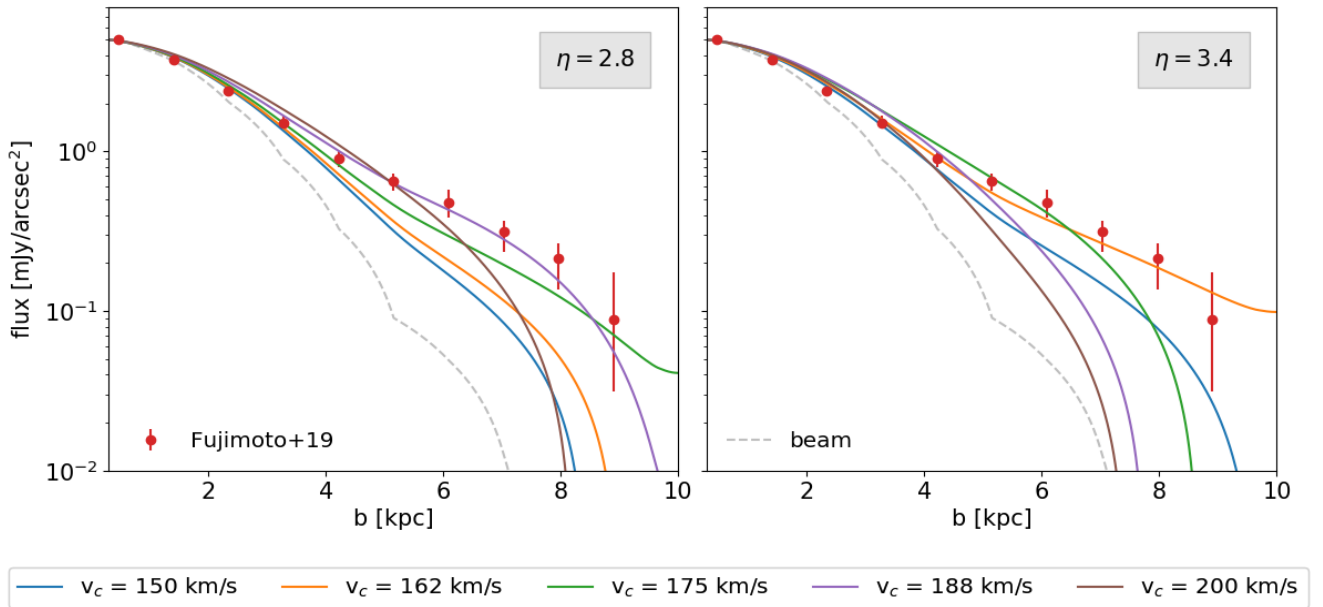
$$\begin{aligned} \Sigma_{\text{CII}}(b) &= \int_{-\infty}^{+\infty} n^2(r(x)) \Lambda_{\text{CII}}(r(x)) dx = \\ &= 2 \int_b^{+\infty} n^2(r) \Lambda_{\text{CII}}(T, n, r) \frac{r}{\sqrt{r^2 - b^2}} dr. \end{aligned} \quad (19)$$

## 6 COMPARISON WITH DATA

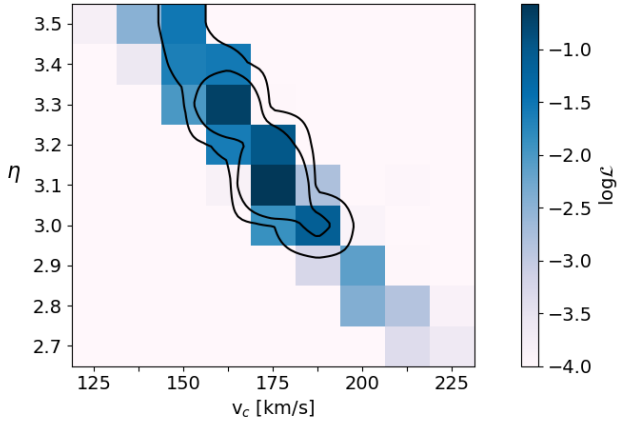
We want to use our results to interpret F19 results, which are obtained from a stacking of the sample including galaxies with different star formation rates (with a mean SFR =  $40 \pm 5 M_{\odot} \text{ yr}^{-1}$ ). The SFR linearly affects our boundary



**Figure 5.** *Left:* Stacked [C II] surface brightness profiles for different values of  $\eta$  as a function of the impact parameter  $b$ . Each profile combines the different SFR values of the 18 galaxies considered by F19. The profiles with  $\eta \gtrsim 3.0$  are discontinuous because the highest values of the SFRs have a stopping radius  $r_{\text{stop}} < 10$  kpc. *Right:* comparison of the profiles with data from F19. The profiles are convolved with the same beam as in the observation (shown in Fig. 6).



**Figure 6.** Predicted [C II] surface brightness profiles (solid lines) as a function of the impact parameter  $b$  for different values of the centrifugal velocity  $v_c$ , compared with the data from F19 (points). Two values of the mass loading factor are shown:  $\eta = 2.8$  (left panel),  $\eta = 3.4$  (right). The profiles are normalised to the central value of the data, and convolved with the same ALMA beam (grey dashed line) used by F19.



**Figure 7.** Likelihood  $\mathcal{L}(x; \eta, v_c) = \exp[-\chi^2(x; \eta, v_c)/\text{ndof}]$  of the model to the F19 data as a function of the two free parameters,  $\eta$  and  $v_c$ . The black contours represent the 68% (inner line) and 95% (outer) confidence levels.

conditions (eq. 7), and thus it has a relevant effect on the variables profiles and on our final prediction for the [C II] emission. Therefore, in order to perform a fair comparison with observations, we take the SFR value of every single galaxy considered in F19, and use it to compute the [C II] emission. The individual galaxy predictions are then stacked into a single profile, which is still a function of  $\eta$ . More rigorously, we compute

$$\Sigma_{\text{CII}}(b; \eta) = \frac{1}{N} \sum_i \Sigma_{\text{CII}}(b; \text{SFR}_i, \eta), \quad (20)$$

where  $N = 18$  is the number of galaxies considered in the F19 sample, and  $\Sigma_{\text{CII}}(b; \text{SFR}_i, \eta)$  [erg cm<sup>-2</sup>s<sup>-1</sup>] is given in eq. 19.

For a direct comparison with the results in F19, we convert the [C II] surface density in a surface brightness (i.e. flux per unit solid angle), measured in mJy arcsec<sup>-2</sup>. We do this dividing  $\Sigma_{\text{CII}}$  by the observed [C II] linewidth  $\Delta v_{\text{obs}}$ :

$$\Delta v_{\text{obs}} = \frac{\Delta v}{c} \frac{v_0}{1+z}, \quad (21)$$

where  $v_0 = 1900$  GHz is the restframe frequency of the [C II] line. From F19:

$$\Delta v \equiv \text{FWHM} = 296 \pm 40 \text{ km s}^{-1} \quad (22)$$

Since the luminosity per unit frequency and per unit solid angle of the [C II] line can be written as:

$$\frac{dL_{\text{CII}}}{d\Omega \Delta v_{\text{obs}}} = \frac{\Sigma_{\text{CII}}}{\Delta v_{\text{obs}}} d_A^2, \quad (23)$$

the flux per unit solid angle is then:

$$\frac{d\mathcal{F}}{d\Omega} = \frac{\Sigma_{\text{CII}}}{\Delta v_{\text{obs}}} \frac{d_A^2}{4\pi d_L^2} = \frac{\Sigma_{\text{CII}}}{4\pi \Delta v_{\text{obs}} (1+z)^4}, \quad (24)$$

for the F19 sample we use the average redshift  $\langle z \rangle = 6$ .

We plot the most interesting ( $\eta \geq 2.6$ ) flux profiles [mJy arcsec<sup>-2</sup>] in the left panel of Fig. 5. As it is clear from the plot, stacking the flux results in profiles with significant discontinuities. This is because an increase in SFR produces

a brighter emission, but at the same time the wind is slowed down at smaller stalling radii. Hence, beyond  $r_{\text{stop}}$  the emission drops to zero.

For a proper comparison with observations, we convolve our profiles with the ALMA beam used in the observation runs (shown in Fig. 6 with a grey dashed line). This procedure smooths out the expected discontinuities. The final prediction for the observed [C II] line surface densities,  $\Sigma_{\text{CII}}$ , as a function of impact parameter is shown in the right panel of Fig. 5. By looking at Fig. 5, we conclude that the profiles with  $\eta \gtrsim 2.6$  result in a surface brightness broadly consistent with those observed by F19, with central values in the range  $\approx 1-5$  mJy arcsec<sup>-2</sup>. The profiles with the highest loading factors,  $3.2 < \eta < 3.4$ , are characterised by a very high [C II] surface brightness in the central regions of the halo, but they drop abruptly at the stalling radius,  $r_{\text{stop}}$ , which is smaller than the observed extension of the [C II] emitting halo. Less mass-loaded outflows ( $\eta = 2.6 - 3.0$ ) have a low  $\Sigma_{\text{CII}}$ , but they extend out to  $r > 10$  kpc.

The solution that best fits the data represents a compromise between these two trends. By performing a  $\chi^2$  fitting procedure, we find that the best solution ( $\chi^2/\text{ndof} = 8/10$ ) is the one with  $\eta = 3.1$ . We conclude that our model predicts the observed emission with a satisfying level of accuracy.

A mass loading factor  $\eta = 3.1$  corresponds to an outflow rate  $\dot{M}_{\text{out}} = 4\pi v_{\text{out}} r^2 \approx 125 M_{\odot} \text{yr}^{-1}$ . The implied total mass of gas (carbon) in the halo is  $6.5 \times 10^9 M_{\odot}$  ( $1.7 \times 10^6 M_{\odot}$ ). The outflow rate resulting from our analysis is higher than (but still consistent at  $3\sigma$  with) the one found in Gallerani et al. (2018), i.e.  $\dot{M}_{\text{out}} = 56 \pm 23 M_{\odot} \text{yr}^{-1}$ . These authors detected the presence of [C II] line broad ( $\approx 500$  km s<sup>-1</sup>) wings indicative of outflows by stacking nine  $z \approx 5.5$  galaxies, part of the Capak et al. (2015) sample, with a mean SFR =  $31 \pm 20 M_{\odot} \text{yr}^{-1}$ , namely slightly lower than the F19 sample.

## 6.1 Dependence on halo circular velocity

As a final step, we explore the dependence of the results on the dark matter halo circular velocity,  $v_c$  (eq. 6). We select for the analysis two values ( $\eta = 2.8, 3.4$ ) close to the best-fitting value  $\eta = 3.1$  found above, and look at the [C II] surface brightness profiles for different values of  $v_c$ . We normalize the profiles to the central value of the F19 data to emphasize the differences in the profile shapes.

The results are shown in Fig. 6. In each panel, only one curve satisfactorily matches the data. For  $\eta = 2.8$  ( $\eta = 3.4$ ) an excellent fit is obtained for  $v_c = 188$  km s<sup>-1</sup> ( $v_c = 162$  km s<sup>-1</sup>). These values correspond to dark matter halo masses around  $10^{11} M_{\odot}$ .

It is useful to comment on the dependence of [C II] emission on  $\eta$  and  $v_c$ . While  $\eta$  affects primarily the overall halo brightness by regulating the outflow density, changing  $v_c$  is equivalent to modify the strength of the gravitational field. As it is clear from Fig. 6, a deep gravitational potential ( $v_c \gtrsim 200$  km s<sup>-1</sup>) results in values of  $r_{\text{stop}}$  which do not match the observed extension of the emitting halo. Weaker potentials ( $v_c \lesssim 150$  km s<sup>-1</sup>) are instead unable to slow down the outflow and therefore maintain a sufficiently high gas density in the outer regions of the halo. In this case, the low density of the gas results in a very faint (undetectable) emission. In addition, the low density gas is more susceptible to photoionization by the galactic and/or cos-

mic UV field turning C II into C III. Such key role of the gravitational confinement has been noted also in recent hydrodynamical simulations results (Li & Tonnesen 2019).

In order to further generalize our results, in Fig. 7 we have performed a full parameter study for  $\eta$  and  $v_c$ . We take  $\eta$  ranging from 2.7 to 3.5 and  $v_c$  ranging from 125 to 225 km s<sup>-1</sup>. For every couple of parameters, we compute the predicted  $\Sigma_{\text{CII}}$  profile, and compute the likelihood of the model to the F19 data as in the previous cases. The resulting likelihood function is shown in Fig. 7.

Generally, a tight anti-correlation between  $\eta$  and  $v_c$  is found, but the likelihood shows a narrow maximum around the values close to the ones identified previously, i.e.  $\eta = 3.2 \pm 0.10$  (or  $\dot{M}_{\text{out}} = 128 M_{\odot} \text{yr}^{-1}$ ) and  $v_c = 170 \pm 10 \text{ km s}^{-1}$ . These results imply that extended halos can be used to set strong constraints on the possible values of the mass loading factor and dark matter halo mass of early galaxies.

## 7 SUMMARY AND CONCLUSIONS

We have proposed that the recently discovered (Fujimoto et al. 2019), very extended ( $\approx 10$  kpc) [C II] emitting halos around EoR galaxies are the result of supernova-driven cooling outflows. Our model contains two parameters, the outflow mass loading factor,  $\eta = \dot{M}_{\text{out}}/\text{SFR}$ , and the parent galaxy dark matter halo circular velocity,  $v_c$ . The outflow model successfully matches the observed [C II] surface brightness if  $\eta = 3.20 \pm 0.10$  and  $v_c = 170 \pm 10 \text{ km s}^{-1}$ . Given that for the F19 sample the mean SFR =  $40 \pm 5 M_{\odot} \text{yr}^{-1}$ , the predicted outflow rate is  $\dot{M}_{\text{out}} = 128 \pm 5 M_{\odot} \text{yr}^{-1}$ . We also note that the presence of extended [C II] halos requires a ionizing escape fraction from the parent galaxy  $f_{\text{esc}} \ll 1$ . Values of  $f_{\text{esc}} \gtrsim 0.2$ , as those required by most reionization models, produce halo UV fields that are too intense for [C II] to survive photoionization.

The success of the model largely relies on the fact that we follow precisely the catastrophic cooling of the outflow occurring within the central kpc. The gas cools to temperatures as low as a few hundred K at the same time recombining. These are necessary conditions for the formation and survival of C II ions, which are carried away by the neutral outflow at velocities of 300-500 km s<sup>-1</sup>. The [C II] halos, according to our model, are then the result of cold neutral outflows from galaxies.

Although the model has been applied here to stacked data, it can be readily adapted to individual high- $z$  galaxies, as those observed e.g. by the ALMA ALPINE survey, which are now becoming available (Ginolfi et al. 2020; see also Fujimoto et al., in prep.). The model returns key information on early galaxies, such as (i) the presence of outflows and their mass loading factor/outflow rate; (ii) the dark matter halo mass; (iii) the escape fraction of ionizing photons. These are all crucial quantities which are hardly recovered from alternative methods at high redshifts. By modelling galaxies on an individual basis it will be also possible to clarify whether the emission profile and extension of the [C II] halo is related to the SFR of the galaxy.

Clearly, the fact that the extended [C II] halos surface brightness can be successfully fit by our model does not guarantee that outflows are the only possible explanation. Alternative interpretations, such as the presence of satellites,

also need to be carefully explored. Interestingly, Gallerani et al. (2018) reported evidence for starburst-driven outflows in nine  $z \approx 5.5$  galaxies from the presence of broad wings in the [C II] line. Although they could not exclude that part of this signal is due to emission from faint satellite galaxies, their analysis favoured the outflow hypothesis.

Remarkably, although two independent hydrodynamical zoom-in simulations (Pallottini et al. 2017b; Arata et al. 2018) have successfully matched both the dust and stellar continuum profiles deduced from F19 observations, the same simulations could not reproduce the extended [C II] line emission. This might be due to an incomplete treatment of stellar feedback, or to numerical resolution issues related to the outflow catastrophic cooling. Our simple model is instead able to perfectly match the observed surface brightness. Hence, insight can be likely gained from a detailed comparison with simulations.

Alternatively, the failure of the simulations might indicate that the additional energy input required to transport the gas at such large distances could be provided by an AGN. Although the inferred value of  $\eta = 3.2$  is marginally consistent with starburst-driven outflows (e.g. Heckman et al. 2015), it is probably more typical of AGN (Fiore et al. 2017). This hypothesis must be tested via dedicated hydrodynamical simulations including radiative transfer.

In spite of its success, the model presented here contains several limitations and hypothesis that will need to be removed in the future. The present one-dimensional treatment should be augmented with a full 3D numerical simulation of the outflow, also dropping the steady state assumption made here. A more realistic treatment of the circumgalactic environment is also necessary, along with the consideration of non-equilibrium cooling/recombination effects when computing ionic abundances. Finally, the effects of CMB on [C II] emission (da Cunha et al. 2013; Pallottini et al. 2017b; Kohandel et al. 2019), particularly in the external, low-density regions of the outflow must be included in the calculation. Although some of these improvements might affect the quantitative conclusions of this paper, it appears that so far outflows remain the best option to explain the puzzling nature of extended [C II] halos. These systems might be the smoking gun of the process by which the intergalactic medium was enriched with heavy elements during the EoR, as witnessed by quasar absorption line experiments (D’Odorico et al. 2013; Meyer et al. 2019; Becker et al. 2019).

## ACKNOWLEDGEMENTS

EP thanks Edoardo Centamori for useful suggestions. AF acknowledges support from the ERC Advanced Grant INTERSTELLAR H2020/740120. LV acknowledges funding from the European Union’s Horizon 2020 research and innovation program under the Marie Skłodowska-Curie Grant agreement No. 746119. SF acknowledges the Cosmic Dawn Center of Excellence funded by the Danish National Research Foundation under then grant No. 140. This research was supported by the Munich Institute for Astro- and Particle Physics (MIAPP) of the DFG cluster of excellence “Origin and Structure of the Universe”. Partial support from the Carl Friedrich von Siemens-Forschungspreis der Alexander von Humboldt-Stiftung Research Award is kindly acknowl-

edged (AF). We acknowledge use of the Python programming language (Van Rossum & de Boer 1991), Astropy (Astropy Collaboration et al. 2013), Matplotlib (Hunter 2007), NumPy (van der Walt et al. 2011), and SciPy (Jones et al. 2001).

## REFERENCES

- Agertz O., Kravtsov A. V., 2015, *ApJ*, **804**, 18
- Anninos P., Zhang Y., Abel T., Norman M. L., 1997, *New Astronomy*, **2**, 209
- Arata S., Yajima H., Nagamine K., Li Y., Khochfar S., 2018, arXiv e-prints, p. [arXiv:1810.07621](https://arxiv.org/abs/1810.07621)
- Asplund M., Grevesse N., Sauval A. J., Scott P., 2009, *ARA&A*, **47**, 481
- Astropy Collaboration et al., 2013, *A&A*, **558**, A33
- Becker G. D., et al., 2019, *ApJ*, **883**, 163
- Behrens C., Pallottini A., Ferrara A., Gallerani S., Vallini L., 2018, *MNRAS*, **477**, 552
- Bovino S., Grassi T., Capelo P. R., Schleicher D. R. G., Banerjee R., 2016, *A&A*, **590**, A15
- Bustard C., Zweibel E. G., D’Onghia E., 2016, *The Astrophysical Journal*, **819**, 29
- Capak P. L., et al., 2015, *Nature*, **522**, 455
- Carniani S., et al., 2017, *A&A*, **605**, A42
- Carniani S., et al., 2018, *MNRAS*, **478**, 1170
- Chevalier R. A., Clegg A. W., 1985, *Nature*, **317**, 44
- Cicone C., et al., 2015, *A&A*, **574**, A14
- D’Odorico V., et al., 2013, *MNRAS*, **435**, 1198
- D’Odorico V., et al., 2018, *ApJ*, **863**, L29
- Dayal P., Ferrara A., 2018, *Phys. Rep.*, **780**, 1
- Ferrara A., Vallini L., Pallottini A., Gallerani S., Carniani S., Kohandel M., Decataldo D., Behrens C., 2019, *MNRAS*, **489**, 1
- Fiore F., et al., 2017, *Astronomy & Astrophysics*, **601**, A143
- Fujimoto S., et al., 2019, *ApJ*, **887**, 107
- Gallerani S., Pallottini A., Feruglio C., Ferrara A., Maiolino R., Vallini L., Riechers D. A., Pavesi R., 2018, *MNRAS*, **473**, 1909
- Ginolfi M., et al., 2020, *A&A*, **633**, A90
- Gnedin N. Y., Hollon N., 2012, *The Astrophysical Journal Supplement Series*, **202**, 13
- Gray W. J., Oey M., Silich S., Scannapieco E., 2019, arXiv preprint arXiv:1910.12882
- Haardt F., Madau P., 2012, *The Astrophysical Journal*, **746**, 125
- Heckman T. M., Thompson T. A., 2017, *Handbook of Supernovae*, pp 1–24
- Heckman T. M., Alexandroff R. M., Borthakur S., Overzier R., Leitherer C., 2015, *ApJ*, **809**, 147
- Hopkins P. F., Kereš D., Oñorbe J., Faucher-Giguère C.-A., Quataert E., Murray N., Bullock J. S., 2014, *Monthly Notices of the Royal Astronomical Society*, **445**, 581
- Hopkins P. F., et al., 2018, *MNRAS*, **480**, 800
- Hunter J. D., 2007, *Computing in Science Engineering*, **9**, 90
- Inoue A. K., Iwata I., Deharveng J.-M., 2006, *Monthly Notices of the Royal Astronomical Society: Letters*, **371**, L1
- Inoue A. K., et al., 2016, *Science*, **352**, 1559
- Jones E., Oliphant T., Peterson P., et al., 2001, SciPy: Open source scientific tools for Python, <http://www.scipy.org/>
- Kakuma R., et al., 2019, arXiv e-prints, p. [arXiv:1906.00173](https://arxiv.org/abs/1906.00173)
- Knudsen K. K., Watson D., Frayer D., Christensen L., Gallazzi A., Michalowski M. J., Richard J., Zavala J., 2016, preprint, ([arXiv:1603.03222](https://arxiv.org/abs/1603.03222))
- Kohandel M., Pallottini A., Ferrara A., Zanella A., Behrens C., Carniani S., Gallerani S., Vallini L., 2019, *MNRAS*, **487**, 3007
- Kovetz E. D., et al., 2017, arXiv e-prints, p. [arXiv:1709.09066](https://arxiv.org/abs/1709.09066)
- Laporte N., et al., 2017, *ApJ*, **837**, L21
- Le Fèvre O., Béthermin M., Faisst A., Capak P., Cassata P., Silverman J. D., Schaerer D., Yan L., 2019, arXiv e-prints, p. [arXiv:1910.09517](https://arxiv.org/abs/1910.09517)
- Leitherer C., et al., 1999, *APJS*, **123**, 3
- Li M., Tonnesen S., 2019, arXiv preprint arXiv:1910.14235
- Meyer R. A., Bosman S. E. I., Kakiichi K., Ellis R. S., 2019, *MNRAS*, **483**, 19
- Mitra S., Choudhury T. R., Ferrara A., 2015, *MNRAS*, **454**, L76
- Mitra S., Choudhury T. R., Ferrara A., 2018, *MNRAS*, **473**, 1416
- Muratov A. L., Kereš D., Faucher-Giguère C.-A., Hopkins P. F., Quataert E., Murray N., 2015, *Monthly Notices of the Royal Astronomical Society*, **454**, 2691
- Murray N., 2011, *ApJ*, **729**, 133
- Osterbrock D. E., Tran H. D., Veilleux S., 1992, *ApJ*, **389**, 305
- Pallottini A., Gallerani S., Ferrara A., Yue B., Vallini L., Maiolino R., Feruglio C., 2015, *MNRAS*, **453**, 1898
- Pallottini A., Ferrara A., Gallerani S., Vallini L., Maiolino R., Salvadori S., 2017a, *MNRAS*, **465**, 2540
- Pallottini A., Ferrara A., Bovino S., Vallini L., Gallerani S., Maiolino R., Salvadori S., 2017b, *MNRAS*, **471**, 4128
- Pallottini A., et al., 2019, *MNRAS*, **487**, 1689
- Robertson B. E., Ellis R. S., Furlanetto S. R., Dunlop J. S., 2015, *ApJ*, **802**, L19
- Rybak M., Hodge J. A., Vegetti S., van der Werf P., Andreani P., Graziani L., McKean J. P., 2019, arXiv e-prints, p. [arXiv:1912.12538](https://arxiv.org/abs/1912.12538)
- Salpeter E. E., 1955, *ApJ*, **121**, 161
- Schaerer D., Charbonnel C., Meynet G., Maeder A., Schaller G., 1993, *A&AS*, **102**, 339
- Stark D. P., et al., 2015, *MNRAS*, **450**, 1846
- Strickland D. K., Heckman T. M., 2009, *The Astrophysical Journal*, **697**, 2030
- Sugahara Y., Ouchi M., Harikane Y., Bouché N., Mitchell P. D., Blaizot J., 2019, *ApJ*, **886**, 29
- Tamura Y., et al., 2018, arXiv e-prints,
- Thompson T. A., Quataert E., Zhang D., Weinberg D. H., 2015, *Monthly Notices of the Royal Astronomical Society*, **455**, 1830
- Tielens A. G. G. M., 2005, *The Physics and Chemistry of the Interstellar Medium*
- Vallini L., Gallerani S., Ferrara A., Pallottini A., Yue B., 2015, *ApJ*, **813**, 36
- Vallini L., Pallottini A., Ferrara A., Gallerani S., Sobacchi E., Behrens C., 2018, *MNRAS*, **473**, 271
- Van Rossum G., de Boer J., 1991, *CWI Quarterly*, **4**, 283
- Voronov G. S., 1997, *Atomic Data and Nuclear Data Tables*, **65**, 1
- Wisotzki L., et al., 2016, *A&A*, **587**, A98
- Wisotzki L., et al., 2018, *Nature*, **562**, 229
- Yue B., Ferrara A., 2019, *MNRAS*, **490**, 1928
- Yue B., Ferrara A., Pallottini A., Gallerani S., Vallini L., 2015, *MNRAS*, **450**, 3829
- da Cunha E., et al., 2013, *ApJ*, **766**, 13
- van der Walt S., Colbert S. C., Varoquaux G., 2011, *Computing in Science Engineering*, **13**, 22

## APPENDIX A: CII DENSITY

In order to predict the [C II] line emission from the outflow it is necessary to evaluate the fraction of carbon found in the singly ionized state. We start by assuming that the electron density is equal to the proton density,  $n_e \approx n_p$ , i.e. we neglect contributions from other ionized species, such as He and C because of their lower abundance and/or higher (for He) ionization potential. Then we write the hydrogen ionization

equation

$$n_{\text{H}}\Gamma_{\text{H}} + n_{\text{H}}n_e k_{\text{H}} = n_e n_{\text{p}} \eta_{\text{H}} \quad (\text{A1})$$

where  $\Gamma_{\text{H}}$ ,  $k_{\text{H}}$ , and  $\alpha_{\text{H}}$  are the hydrogen photoionization, collisional ionization, and recombination coefficients respectively. For  $\Gamma_{\text{H}}$  we use the expressions given in Sec. 3.1;  $k_{\text{H}}$  is taken from Bovino et al. (2016, Appendix B); for  $\alpha_{\text{H}}$  we use the power-law approximation to Case B radiative recombination given by Tielens (2005),

$$\eta_{\text{H}} = 4.18 \times 10^{-13} \left( \frac{T}{10^4 \text{ K}} \right)^{-0.75} \text{ cm}^3 \text{ s}^{-1}. \quad (\text{A2})$$

Using  $n_{\text{p}} + n_{\text{H}} = A_{\text{H}}n$ , where  $A_{\text{H}}$  is the cosmic hydrogen abundance<sup>1</sup>,  $n$  the total gas density, and defining  $x_e = n_e/n$ , we can recast eq. A1 in the following form:

$$(\eta_{\text{H}} + k_{\text{H}}) x_e^2 + \left( \frac{\Gamma_{\text{H}}}{A_{\text{H}}n} - k_{\text{H}} \right) x_e - \frac{\Gamma_{\text{H}}}{A_{\text{H}}n} = 0, \quad (\text{A3})$$

from which the H ionization fraction can be obtained.

We now turn to carbon and write the equivalent ionization equations assuming a detailed balance among three states, with number density  $n_{\text{CI}}$ ,  $n_{\text{CII}}$ ,  $n_{\text{CIII}}$ , of C atoms ionization,

$$n_{\text{CI}}\Gamma_{\text{CI}} + n_{\text{CI}}n_e k_{\text{CI}} = n_e n_{\text{CII}} \eta_{\text{CII}}; \quad (\text{A4a})$$

$$n_{\text{CII}}\Gamma_{\text{CII}} + n_{\text{CII}}n_e k_{\text{CII}} = n_e n_{\text{CIII}} \eta_{\text{CIII}}. \quad (\text{A4b})$$

The photoionization, collisional ionization, and recombination coefficients are  $\Gamma_{\text{CI}}$ ,  $\Gamma_{\text{CII}}$ ,  $k_{\text{CI}}$ ,  $k_{\text{CII}}$ , and  $\alpha_{\text{CII}}$ ,  $\alpha_{\text{CIII}}$ , respectively. With the bound  $n_{\text{CI}} + n_{\text{CII}} + n_{\text{CIII}} = A_{\text{C}}n \equiv n_{\text{C}}$ , we can solve the equations above and obtain ionization fraction of Carbon  $x_{\text{CII}} = n_{\text{CII}}/n_{\text{C}}$ :

$$x_{\text{CII}} = \left( 1 + \frac{\Gamma_{\text{CII}}}{n_e \eta_{\text{CIII}}} + \frac{n_e \eta_{\text{CII}}}{\Gamma_{\text{CI}} + n_e k_{\text{CI}}} + \frac{k_{\text{CII}}}{\eta_{\text{CIII}}} \right)^{-1} \quad (\text{A5})$$

The photoionization rates  $\Gamma_{\text{CI}}$  and  $\Gamma_{\text{CII}}$  can be computed in the same way as done for H and He (eq. 13) using the photoionization cross section data in Table 1. We finally get

$$\Gamma_{\text{CI}}(r) = 7.5 \times 10^{-7} \left( \frac{\text{kpc}}{r} \right)^2 f_{\text{esc}} \text{ s}^{-1} \quad (\text{A6a})$$

$$\Gamma_{\text{CII}}(r) = 1.85 \times 10^{-8} \left( \frac{\text{kpc}}{r} \right)^2 f_{\text{esc}} \text{ s}^{-1}, \quad (\text{A6b})$$

and the analogous quantities for the case  $f_{\text{esc}} = 0$  in which the only radiation quantities for the case  $f_{\text{esc}} = 0$  in which the only radiation field is the UVB taken from Haardt & Madau (2012) and the parameters in Table 1. We obtain:

$$\Gamma_{\text{UVB,CI}} = 1.34 \times 10^{-12} \text{ s}^{-1} \quad (\text{A7a})$$

$$\Gamma_{\text{UVB,CII}} = 6.77 \times 10^{-14} \text{ s}^{-1} \quad (\text{A7b})$$

Recombination rates must include both radiative and dielectronic recombination. For these we use the following approximations (Tielens 2005):

$$\alpha_{\text{CII}} = 10^{-13} \left[ 4.66 \left( \frac{T}{10^4 \text{ K}} \right)^{-0.62} + 1.84 \right] \text{ cm}^3 \text{ s}^{-1}, \quad (\text{A8a})$$

$$\alpha_{\text{CIII}} = 10^{-12} \left[ 2.45 \left( \frac{T}{10^4 \text{ K}} \right)^{-0.65} + 6.06 \right] \text{ cm}^3 \text{ s}^{-1}. \quad (\text{A8b})$$

<sup>1</sup> We assume a solar chemical composition (Asplund et al. 2009) for which  $A_{\text{H}} = 0.76$ ,  $A_{\text{C}} = 2.69 \times 10^{-4}$ .

Finally, the collisional ionization rates,  $k_{\text{CI}}$  and  $k_{\text{CII}}$ , are taken from Voronov (1997, Table 1).

This paper has been typeset from a  $\text{\TeX}/\text{\LaTeX}$  file prepared by the author.