

THE SFR-RADIUS CONNECTION: DATA AND IMPLICATIONS FOR WIND STRENGTH AND HALO CONCENTRATION

LIN LIN¹, S. M. FABER², DAVID C. KOO², SAMIR SALIM³, AARON A. DUTTON⁴, JEROME J. FANG⁵, FANGZHOU JIANG⁶, CRISTOPH T. LEE⁷, ALDO RODRÍGUEZ-PUEBLA⁸, A. VAN DER WEI^{9, 10}, YICHENG GUO¹¹, GUILLERMO BARRO¹², JOEL R. PRIMACK⁷, AVISHAI DEKEL^{6, 13}, ZHU CHEN¹⁴, YIFEI LUO², VIRAJ PANDYA², RACHEL S. SOMERVILLE^{15, 16}, HENRY C. FERGUSON¹⁷, SUSAN KASSIN^{18, 17}, ANTON M. KOEKEMOER¹⁷, NORMAN A. GROGIN¹⁷, AUDREY GALAMETZ¹⁹, P. SANTINI²⁰, HOOSHANG NAYYERI²¹, MAURO STEFANON²², TOMAS DAHLEN¹⁷, BAHRAM MOBASHER²³, LEI HAO¹

Draft version October 25, 2019

ABSTRACT

This paper is one in a series that explores the importance of radius as a second parameter in galaxy evolution. The topic investigated here is the relationship between star formation rate (SFR) and galaxy radius (R_e) for main-sequence star-forming galaxies. The key observational result is that, over a wide range of stellar mass and redshift in both CANDELS and SDSS, there is little trend between SFR and R_e at fixed stellar mass. The Kennicutt-Schmidt law, or any similar density-related star formation law, then implies that smaller galaxies must have lower gas fractions than larger galaxies (at fixed M_*), and this is supported by observations of local star-forming galaxies. We investigate the implication by adopting the equilibrium “bathtub” model: the ISM gas mass is assumed to be constant over time and the net star formation rate is the difference between the accretion rate of gas onto the galaxy from the halo and the outflow rate due to winds. To match the observed null correlation between SFR and radius, the bathtub model requires that smaller galaxies at fixed mass have weaker galactic winds. Our hypothesis is that galaxies are a 2-dimensional family whose properties are set mainly by halo mass and concentration. Galaxy radius and accretion rate plausibly both depend on halo concentration, which predicts how wind strength should vary with R_e and SFR.

Subject headings: galaxies:evolution - galaxies:star formation - galaxies:structure

¹ Shanghai Astronomical Observatory, Chinese Academy of Sciences, Shanghai 200030, China

² Department of Astronomy and Astrophysics, University of California, Santa Cruz, CA 95064, USA

³ Department of Astronomy, Indiana University, Bloomington, IN 47404, USA

⁴ New York University Abu Dhabi, PO Box 129188, Saadiyat Island, Abu Dhabi, United Arab Emirates

⁵ Astronomy Department, Orange Coast College, Costa Mesa, CA, 92626, USA

⁶ Racah Institute of Physics, The Hebrew University, Jerusalem 91904, Israel

⁷ Physics Department, University of California, Santa Cruz, CA 95064, USA

⁸ Instituto de Astronomía, Universidad Nacional Autónoma de México, A. P. 70-264, 04510, México, D.F., México

⁹ Sterrenkundig Observatorium, Universiteit Gent, Krijgslaan 281 S9, B-9000 Gent, Belgium

¹⁰ Max-Planck-Institut für Astronomie, Königstuhl 17, D-69117, Heidelberg, Germany

¹¹ Department of Physics and Astronomy, University of Missouri, Columbia, MO 65211, USA

¹² Department of Physics, University of the Pacific, 3601 Pacific Avenue, Stockton, CA 95211, USA

¹³ SCIPP, University of California, Santa Cruz, CA 95064, USA

¹⁴ Shanghai Key Lab for Astrophysics, Shanghai Normal University, 100 Guilin Road, Shanghai 200234, China

¹⁵ Center for Computational Astrophysics, Flatiron Institute, 162 5th Avenue, New York, NY 10010, USA

¹⁶ Department of Physics and Astronomy, Rutgers, The State University of New Jersey, 136 Frelinghuysen Rd, Piscataway, NJ 08854, USA

¹⁷ Space Telescope Science Institute, 3700 San Martin Drive, Baltimore, MD 21218, USA

¹⁸ Johns Hopkins University, Baltimore, MD 21218, USA

¹⁹ Max-Planck-Institut für Extraterrestrische Physik, D-85748 Garching, Germany

²⁰ INAF Osservatorio Astronomico di Roma, via di Frascati 33, I-00040 Monte Porzio Catone, Roma, Italy

²¹ Department of Physics and Astronomy, University of California, Irvine, CA 92697, USA

²² Leiden Observatory, Leiden University, NL-2300 RA Leiden, Netherlands; Department of Physics and Astronomy, University of Missouri, Columbia, MO 65211, USA

²³ Department of Physics and Astronomy, University of California, Riverside, CA 92521, USA

1. INTRODUCTION

Understanding how galaxies grow their stellar mass is one of the central questions in galaxy formation. From observations, the global star formation rates of star-forming galaxies are observed to be well correlated with their stellar masses, a relation that has been termed the “star-forming main-sequence” (SFMS) (Noeske et al. 2007; Elbaz et al. 2007, 2011; Daddi et al. 2007; Whitaker et al. 2012; Speagle et al. 2014). Data show that this empirical relation has existed since $z \geq 2$ with a scatter of only 0.3 dex at fixed stellar mass (Whitaker et al. 2012). Increasingly at late times, galaxies are found lying below the SFMS with star formation rates that are considerably lower than those on the star-forming ridgeline. However, the present paper strongly focuses on star-forming *ridgeline galaxies*, which are clearly evident as a separate population (Wuyts et al. 2011; Whitaker et al. 2017; Fang et al. 2018).

The SFMS is one of two major structural scaling relations for star-forming galaxies, the other being is the effective radius-stellar mass relation (e.g., Shen et al. 2003; van der Wel et al. 2014). This relation also has scatter, and it is natural to consider whether residuals about the two relations are correlated. There are at least two reasons to think they might be. The first stems from a simple model in which all galaxies obey the Kennicutt-Schmidt star formation law (KS law, Kennicutt 1998, see review by Kennicutt & Evans (2012)) and assuming all galaxies at the same M_* have the *same gas fraction* regardless of R_e . One can then show (see prediction in Figure 1) that large- R_e galaxies would have lower total star-formation than small ones, owing to the high exponent (1.4) in the KS law. Hence, a negative correlation is expected between residuals in sSFR and SMA relative to the sSFR-mass and size-mass relations at fixed mass.

The second reason stems from a simple model for putting galaxies into dark halos. This picture says that galaxy halos have two important structural parameters, M_{vir} and concentration C (or formation time), and that these parameters imprint themselves on galaxies to create the two-dimensional family of star-forming galaxies seen in R_e vs. M_* today. M_{vir} maps onto M_* , and concentration/formation-time determines the baryonic radius of the galaxy forming within the halo (Jiang et al. 2019). The latter effect arises because the centers of high-concentration halos collapse early when the universe is dense, thus forming a denser collapsed central object (Wechsler et al. 2002). But high-concentration halos would accrete more slowly today (see Figure 9), and escape velocities would also be higher in denser galaxies, potentially producing weaker winds (Dutton et al. 2010). Assuming the system follows the equilibrium bathtub model (Dekel & Mandelker 2014, see Section 5.1), halo mass accretion rate and wind mass-loading factor together determine the amount of gas available for star formation. Hence a connection between galaxy radius residual and star formation residual is a possibility through their joint dependence on halo concentration/formation time.

A number of theoretical papers are beginning to explore the effect of halo concentration on galaxy properties. Dutton et al. (2010) calculated the effect of concen-

tration²⁴ on wind strength using a semi-analytic model (SAM). A companion paper to this one (Chen et al. 2019) posits a model in which black holes are more massive in higher concentration halos and considers how that would affect the structure of quenching galaxies. The impact of concentration is visible in the EAGLE simulations, where several papers have examined its effect on the stellar-mass-halo-mass relation (Matthee et al. 2017; Kulier et al. 2019), the star-forming main-sequence (Matthee & Schaye 2019), and black hole mass and quenching (Davies et al. 2019; Oppenheimer et al. 2019).

This paper focuses on the impact of concentration on halo mass accretion rate, galaxy radii, winds, and star formation rates. The launching point is the “bathtub” model (e.g., Finlator & Davé 2008; Bouché et al. 2010; Krumholz & Dekel 2012; Davé et al. 2012; Lilly et al. 2013; Forbes et al. 2014; Dekel & Mandelker 2014; Schaye et al. 2015; Rodríguez-Puebla et al. 2016), sometimes also called the “self-regulator” model, in which each type of gas flow is represented by a *single value* summed over the whole galaxy. The foundation of the bathtub model is the Kennicutt-Schmidt law (Kennicutt 1998; Kennicutt & Evans 2012), in which SFR is a positive power of gas surface density. Hence, if too much gas piles up, SFR increases, and the gas mass goes down. Since star formation responds much more quickly than accretion onto halos changes (Dutton et al. 2010; Dekel et al. 2013; Dekel & Mandelker 2014), the star formation rate continually adjusts itself to follow the accretion, and an equilibrium solution is reached in which the gas mass in the ISM is constant with time (Dekel & Mandelker 2014).

Since new gas cannot add to the ISM, only two paths are available: make new stars or flow out as a wind. The star formation rate is therefore really the difference between the accretion rate and the wind strength, and the ISM is simply a way-station through which gas passes on its way to making stars or wind. From this point of view, the KS law should be read backwards: the galaxy needs some value of the SFR to be in equilibrium with the accretion rate and wind, and the ISM adjusts its density (according to the KS law) to make that happen. A more intuitive way to plot KS law would be to plot the required star formation rate on the X -axis as the independent variable and the resulting needed gas density on the Y -axis as the dependent variable.

We can now ask what the bathtub model says about the effect of halo concentration on the star formation rate. Higher concentration means higher infall at early times (Wechsler et al. 2002), and therefore, at fixed halo mass, less infall, and potentially lower SFR, at late times. But higher early infall also makes a denser center, and the radius of the resulting galaxy will be smaller. For the same stellar mass, such a galaxy will have a higher escape velocity, which might mean a weaker wind and more gas going into stars (Dutton et al. 2010). Thus, whether the net star formation goes down due to decreased infall depends on whether that effect is balanced by increased star formation efficiency due to a weaker wind.

Which of these effects wins can be ascertained observationally by testing for a correlation between the ra-

²⁴ For brevity, we will henceforth use only the term “concentration” and omit “formation time”, but implicitly we always mean the two together, as their effects are similar.

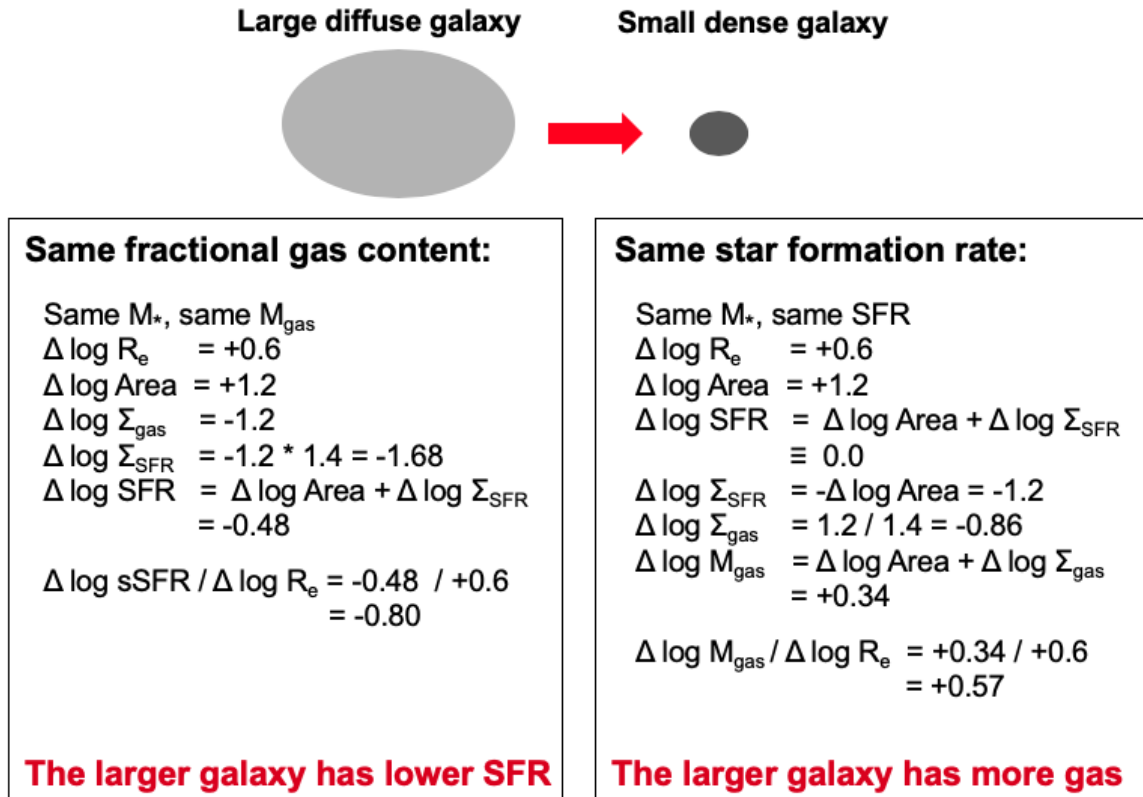


FIG. 1.— Prediction of SFR and gas differences by assuming constant gas fraction (left) or constant SFR (right). Following KS law, if large and small galaxies have the same gas fraction, it is predicted a slope of -0.8 in $\Delta \log \text{sSFR}$ vs. $\Delta \log R_e$ plane. Otherwise, if they have the same SFR, it would have a slope of $+0.57$ in $\Delta \log M_{\text{gas}}$ vs. $\Delta \log R_e$ plane.

dius residual $\Delta \log R_e$ and the star formation residual $\Delta \log \text{sSFR}$. We know for a fact that halo concentrations vary, and we show in Section 5.2 that the expected effect on accretion from varying halo concentration is considerable. If unopposed, the impact on the star formation rate should be obvious. The observed null correlation thus sets a clear constraint on wind strengths that theoretical models must match. Indeed, in addition to the stellar-mass-halo-mass relation, this could be one of the tightest constraints on wind strength that we have.

The above logic suggests that studying $\Delta \log \text{sSFR}$ vs. $\Delta \log R_e$ might constrain winds. Several works have previously examined such data in slices at fixed M_* . Across all galaxies, the broad trend is that galaxies *well below* the SFMS are smaller than galaxies on the ridgeline, both locally (e.g. Shen et al. 2003; Omand et al. 2014) and far away (Wuyts et al. 2011; van der Wel et al. 2014). However, we are interested in the behavior of star-forming galaxies with $\Delta \log \text{sSFR} \geq -0.45$ (our definition of the ridgeline in this paper). Within this range, Wuyts et al. (2011) found that SDSS galaxies above the SFMS are up to 0.3 dex smaller, but this trend shrank at intermediate redshifts and disappeared by $z = 2.0-2.5$. Fang et al. (2018) found no significant trend with size for CANDELS galaxies near and above the ridgeline, but galaxies 0.5 dex below the ridgeline were smaller. Brennan et al. (2017) redid the Wuyts et al. (2011) study of SDSS galaxies taking care to eliminate galaxies with bad photometric fits, and Wuyts' trend toward smaller galaxies above the SFMS nearly disappeared. However, an L-shaped trend emerged at all redshifts whereby sizes at

and above the ridgeline were flat with SFR while galaxies near the bottom of the ridgeline were 0.3–1.0 dex smaller, in agreement with Fang et al. (2018). Omand et al. (2014) coded SDSS galaxies by SFR in the $R_e - M_*$ diagram and saw no trend with radius for strongly star-forming galaxies but a decline in radius at very low star formation rates. Finally, Whitaker et al. (2017) studied 3D-HST/CANDELS galaxies by stacking *Spitzer* $24\mu\text{m}$ SFR values and found little trend with radius except for a decline in SFR for very small galaxies at low redshift.

In summary, there appear to be two types of star-forming galaxies in these studies. One type is strongly star forming near and above the peak of the ridgeline, and among them there seems to be little trend in SFR with radius or vice versa. However, galaxies near the very bottom of the ridgeline appear to be smaller, the more so at lower redshifts. Perhaps these objects are in transit to the green valley, where luminous radii shrink due to disk fading (Fang et al. 2013). These galaxies are seen in our sample as well, and they are mentioned in the Discussion. On balance, though, the trend in SFR with radius for galaxies near and above the peak of the ridgeline is small.

In this work, we start by investigating again the dependence between SFR and size for star-forming main-sequence galaxies. Compared to previous works, we implement some improvements. First, we analyze CANDELS and SDSS in parallel, and all five CANDELS fields are used to maximize the sample. In CANDELS sample, we use SFRs from dust-corrected NUV luminosities but compare those rates first to other $24\mu\text{m}$ values. The use

of corrected NUV rates (in contrast to IR values) yields large samples down to $10^9 M_\odot$ out to $z \sim 2.5$, and it also allows us to plot individual galaxies in the SFR-size plane without stacking. This latter point preserves the information in the 2-D distributions and lets us identify sub-populations, measure SFR as a function of R_e and vice versa, and correlate dust absorption with location in SFR vs. size. In SDSS sample, we use SFRs from [Salim et al. \(2018\)](#), in which the SFRs are derived from SED fitting based on GALEX-SDSS-WISE photometry. In both samples, only face-on galaxies are used in order to minimize dust effects and biases in galaxy radii, and interacting and disturbed galaxies are also removed. Centrals and satellites are studied separately in SDSS. Previous studies tended to lump all masses together whereas our finer cuts reveal trends more clearly as a function of both time and mass.

The upshot is to confirm more strongly the *lack of any significant trend* between star formation rate and galaxy size among main-sequence ridgeline galaxies. The KS law then predicts less total gas at fixed M_* in smaller galaxies, which we confirm using measurements of H I and H₂ in local galaxies. This provides important independent validation that our star formation rate measurements are correct.

Then we interpret these results by adopting bathtub model. Based on recent findings, we assume that small-radii galaxies sit in high-concentration halos ([Jiang et al. 2019](#)), and an N-body simulation is used to parametrize accretion rate vs. halo concentration. The observed null trend in SFR vs. radius is then used to deduce the necessary change in wind strength vs. galaxy radius needed to counteract the trend. This is compared to the semi-analytic model of [Dutton et al. \(2010\)](#) and reasonable agreement is seen. In summary, if this chain of logic is correct, the primary conclusion is that the lack of an observed trend between galaxy radius and star formation rate implies that winds must be weaker in small galaxies at fixed stellar mass. A secondary conclusion is that radius is an important second parameter in galaxy evolution that may correlate with halo concentration, halo accretion rate, wind strength, and star formation history.

The paper is organized as follows. Section 2 describes the data and sample selections. The main observational results on SFR vs. radius are presented in Section 3. The resulting predictions for gas content vs. galaxy radius are compared to local gas measurements in Section 4, where agreement is obtained. Implications are discussed in Section 5. Section 5.1 presents the basic bathtub model. Section 5.2 reviews evidence that galaxy radius depends on halo concentration and parametrizes how halo infall rate and therefore wind strength should vary vs. galaxy radius. This result is compared to data in the [Dutton et al. \(2010\)](#) SAM and in the EAGLE simulation. Finally, Section 6 presents a summary and conclusions.

Throughout this paper, we adopt a flat Λ CDM cosmology, with parameters $\Omega_m = 0.3$, $\Omega_\lambda = 0.7$, $H_0 = 70$ km s⁻¹ Mpc⁻¹. Values of M_* and SFR are based on a [Chabrier \(2003\)](#) initial mass function. Occasionally we use the terms “compact” and “diffuse” to describe galaxy radii. Compact simply means that the galaxy is smaller than average for its stellar mass, and diffuse means that it is larger than average.

2. DATA AND SAMPLE SELECTION

2.1. Star-forming Galaxies in CANDELS

In this work we use all five fields from the CANDELS survey ([Grogin et al. 2011](#); [Koekemoer et al. 2011](#)), published in public catalogs by [Galametz et al. \(2013\)](#) for UDS, [Guo et al. \(2013\)](#) for GOODS-S, [Barro et al. \(2017\)](#) for GOODS-N, [Nayyeri et al. \(2017\)](#) for COSMOS, and [Stefanon et al. \(2017\)](#) for EGS²⁵. Rest-frame photometry and photometric redshifts are calculated using EAZY ([Brammer et al. 2008](#)). Spectroscopic redshifts are used if they are available (22% of the sample). We use the median stellar mass from the official CANDELS mass catalog, which combines several different SED fitting methods ([Santini et al. 2015](#)). Since it averages the assumptions of different star formation histories, the median stellar mass is robust with a typical estimated error of ~ 0.1 dex.

Star formation rates, galaxy sizes, and their residuals are computed following the methods of [Fang et al. \(2018\)](#). We briefly summarize them here and refer the reader to [Fang et al. \(2018\)](#) for more details.

The SFRs used in this work come from dust-corrected NUV luminosity (2800 Å). In order to obtain a robust value of A_V , the results from five different SED-fitting methods (labeled as 2a, 2d, 12a, 13a, and 14a in [Santini et al. \(2015\)](#)) are combined and the median A_V is selected. These methods were chosen based on their common use of τ -models and the Calzetti attenuation law. The typical formal error for the median A_V is ~ 0.1 mag. The Calzetti dust attenuation at 2800 Å, A_{NUV} , is $1.8A_V$, which is used to correct the observed NUV flux. Corrected NUV luminosity is then converted to SFR using the calibration from [Kennicutt & Evans \(2012\)](#): $\text{SFR}_{\text{UV,corr}}[M_\odot \text{ yr}^{-1}] = 2.59 \times 10^{-10} L_{\text{NUV,corr}}[L_\odot]$. Although the methods are different, we have verified that our rates from NUV-corrected fluxes are in fact virtually identical to rates derived from full SED fitting.

Since the goal of our study is to analyze the properties of galaxies above and below the SFMS, SFR measurements must be good enough to derive accurate SFR *residuals*. The formal errors of our SFRs are small, but there might be systematic errors, in part because of the use of τ -models and/or the Calzetti law. A separate study ([Liu et al., in prep.](#)) is testing SED-fitting methods on non- τ star formation histories, with encouraging results. In the meantime, it is desirable to have a separate set of SFRs to compare to. The so-called “hybrid” method ($\text{SFR}_{\text{UV+IR}}$), which adds together raw UV and IR rates, is thought to be the most reliable ([Kennicutt et al. 2009](#); [Hao et al. 2011](#)). We calculate the quantity $\text{SFR}_{\text{UV+IR}}$ using the formula in [Wuyts et al. \(2011\)](#), where L_{IR} is determined from 24 μ m data using the calibration of [Rujopakarn et al. \(2013\)](#). Data sources and details are given in [Fang et al. \(2018\)](#).

As explained in [Fang et al. \(2018\)](#), the usual method of testing methods by simply plotting one SF indicator versus another is not good enough to establish the accuracy of SFR *residuals*. We accordingly compute residuals using the SFMS ridgelines given vs. redshift in [Fang et al. \(2018\)](#) and compare them in Figure 2. Red points are

²⁵ Public catalogs for all these fields are available in the *Rainbow* database ([Barro et al. 2011](#))

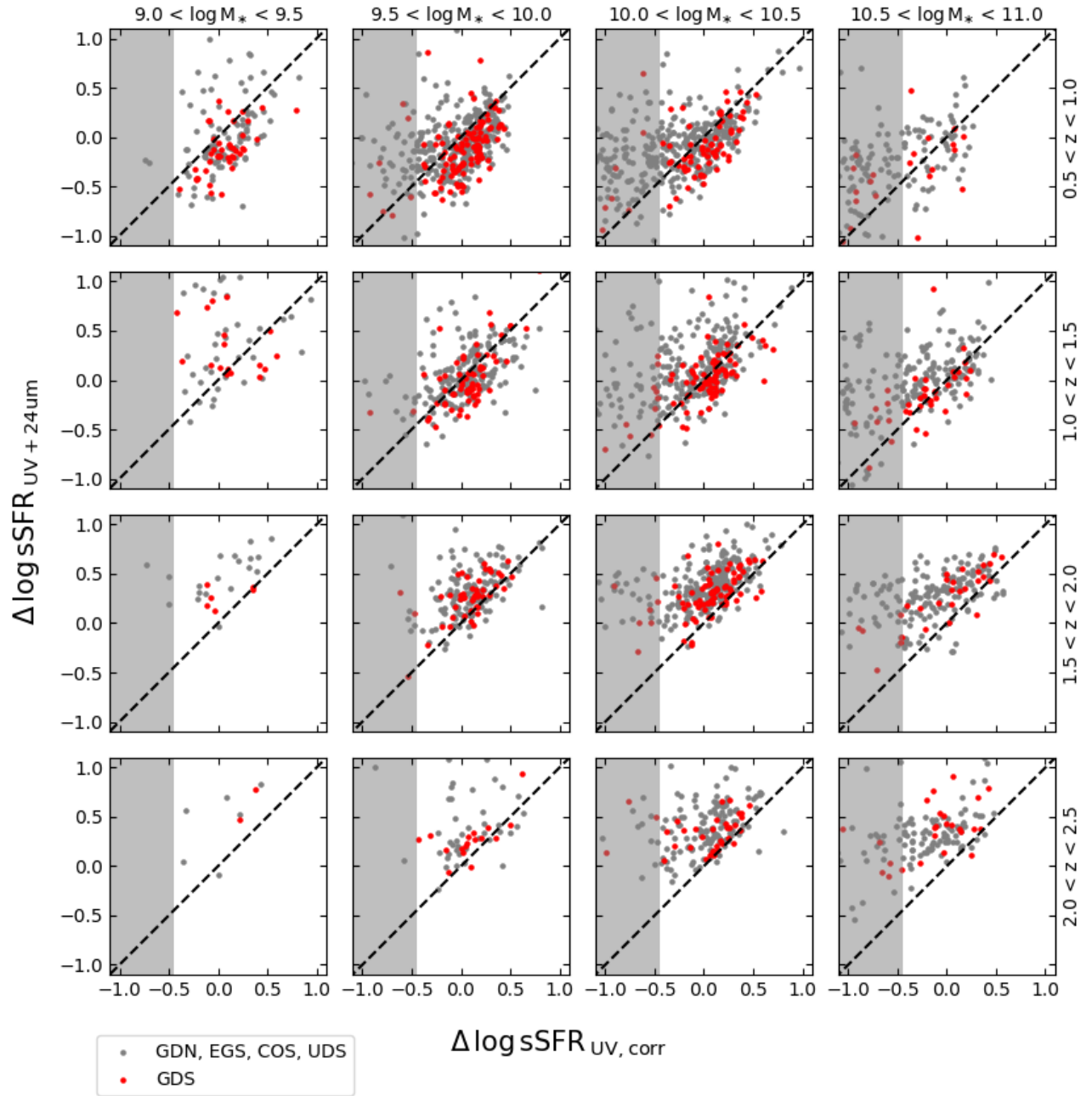


FIG. 2.— Comparison of $\Delta \log \text{sSFR}_{\text{UV,corr}}$ used in this paper with $\Delta \log \text{sSFR}_{\text{UV}+24\mu\text{m}}$ based on the hybrid UV+IR SFR indicator described by Fang et al. (2018). Face-on star-forming galaxies with good $24\mu\text{m}$ detections in all five CANDELS fields are shown. Residuals in both $\text{sSFR}_{\text{UV,corr}}$ and $\text{sSFR}_{\text{UV}+24\mu\text{m}}$ are calculated using identical main-sequence ridgelines, taken from Fang et al. (2018). Green valley galaxies have $\Delta \log \text{sSFR}_{\text{UV,corr}} < -0.45$ dex and lie in the gray rectangles, while ridgeline galaxies populate the white areas. Clear correlations are visible in most of the ridgeline samples. Zero-point offsets vary among the panels but do not disturb the *relative* rankings within the SFMS ridgeline, which are used in this paper.

from GOODS-S, which use deeper $24\mu\text{m}$ data, and the gray points are for all other fields. This figure updates and extends a similar figure in Fang et al. (2018) to all five CANDELS fields.

Several conclusions emerge. First, it is apparent that the IR data are highly incomplete at low mass and high redshift, and therefore it would be impossible to carry out the kind of study undertaken in this paper using IR data alone – use of UV-optical SEDs is essential. The second issue is evident in the shaded rectangles, which denote galaxies in the green valley below $\Delta \log \text{sSFR} < -0.45$ dex (our ridgeline boundary). It is well known that SFRs for green valley galaxies are systematically overestimated by $24\mu\text{m}$ data according to several studies reviewed by Fang et al. (2018), and the same trend is seen here. If these GV objects are set aside, clear if somewhat noisy correlations are visible in most of the panels. The total scatter for the GOODS-S data (after removing outliers and zero point offsets) is 0.24 dex (Fang et al. 2018), which, if assigned equally to both measures, implies an error of 0.17 dex in $\Delta \log \text{sSFR}_{\text{UV,corr}}$.

The last point is the presence of systematic zero point offsets that tend to be negative at low redshift and positive at high redshift. These are not a concern since our goal is the *relative ranking* of objects within the SFMS, which is not disturbed by a zero-point shift.

The second important quantity used in this work is galaxy size defined by the half-light optical radii. For this, we use the semi-major axes ($R_{\text{e,maj}} = a$) based on GALFIT fits to H -band images by van der Wel et al. (2014). $R_{\text{e,maj}}$ is preferred to the circularized radius ($R_{\text{e,circ}} = \sqrt{ab}$) because it is a more stable indicator for inclined disks. Although H -band corresponds to different rest-frame wavelengths at different redshifts, Fang et al. (2018) estimated that, for SF galaxies between redshift $z = 1$ and 2, the wavelength-dependent K -correction to galaxy size is less than 10%. The residuals of $R_{\text{e,maj}}$ are calculated using the mass-size relations from Fang et al. (2018) in different redshift bins. Our use of residuals in bins of mass and redshift makes us insensitive to K -correction errors.

Finally we select only face-on galaxies with $b/a > 0.5$ in order to minimize the effects of dust on $\Delta \log \text{sSFR}_{\text{UV,corr}}$ and inclination on radii. A summary of the CANDELS selection cuts is as follows:

1. Apparent H -band magnitude < 24.5 . This is the limit suggested by van der Wel et al. (2014) for reliable GALFIT measurements.
2. Redshift within $0.5 < z < 2.5$ and stellar mass within $9.0 < \log M_*/M_\odot < 11.0$, to maximize the sample size. We omit $\log M_* > 11.0$ and $z < 0.5$ because of few objects in those range.
3. PHOTFLAG = 0, CLASS_STAR < 0.9 , and GALFIT flag = 0, to ensure reliable photometric measurements, no foreground stars, and good-quality GALFIT fits. This eliminates merging galaxies and galaxies with peculiar morphologies.
4. $b/a > 0.5$, to minimize dust extinction and radius uncertainties. a and b are the semi-major and semi-minor axes of the galaxy from GALFIT measurements.

5. Location in the star-forming region of the UVJ diagram. Star-forming ridgeline galaxies must in addition have $\Delta \log \text{sSFR}_{\text{UV,corr}} > -0.45$ dex. Galaxies located in the SF region but with $\Delta \log \text{sSFR}_{\text{UV,corr}} < -0.45$ dex are retained but classified as green valley galaxies.

According to the analysis in Fang et al. (2018), these criteria include nearly all star-forming galaxies in most mass and redshift bins, but the completeness declines to less than 50% for $M_* < 10^{9.5} M_\odot$ and $z > 2$. See the discussion and Figure 2 in Fang et al. (2018) on completeness.

2.2. Star-forming Galaxies in SDSS

As a supplement to the high-redshift CANDELS data, we select normal star-forming galaxies from the SDSS DR7 catalog (Abazajian et al. 2009). Spectroscopic redshifts, stellar masses, and emission line measurements are obtained from the MPA/JHU value-added catalog (Kauffmann et al. 2003a).

SFR and A_V are taken from Salim et al. (2018), based on UV-optical SED fitting jointly with $22\mu\text{m}$ photometry. They compared their SFRs with other published catalogs and found good agreement for star-forming galaxies, which means that our results should not vary with different SFR indicators. The typical error in the star formation rate is about 0.1 dex (Salim et al. 2016, 2018).

The SFMS ridgeline from Speagle et al. (2014) was adopted to calculate SFR residuals for the SDSS sample at fixed stellar mass ($\Delta \log \text{sSFR}$). On average, we find that the mean sSFR in the Salim catalog is 0.14 dex higher than the ridgeline in Speagle. Since we are only concerned with relative sSFR, we adopt the slope of SFMS in Speagle et al. (2014) and shift the zero-point by 0.14 dex to match the SFR in Salim et al. (2016).

Galaxy radii and Sérsic indices are taken from the NYU Value-Added Galaxy Catalog (Blanton et al. 2005). Similar to $R_{\text{e,maj}}$ in the CANDELS sample, we use the semi-major axis in z -band images to characterize galaxy size. We further calculate the size residuals according to the mass-size relation for star-forming galaxies in Shen et al. (2003).

A summary of the criteria used to select the SDSS star-forming sample is as follows:

1. Redshift in the range $0.02 < z < 0.07$, the apparent magnitude within $14 < r < 17.5$, and $M_* > 10^{9.0} M_\odot$.
2. Single-Sérsic index in the range $0.5 < n < 6$. The upper limit excludes galaxies with bad fits.
3. Merging galaxies are excluded using the classification from Galaxy Zoo ($P_{\text{MG}} < 0.1$). (This is analogous to the good GALFIT flag that we required for CANDELS.)
4. $b/a > 0.5$. a and b are taken from the Blanton et al. (2005) catalog by single-Sérsic fitting.
5. Main-sequence membership using $\Delta \log \text{sSFR} > -0.45$ dex after shifting the Speagle et al. (2014) zero-point by 0.14 dex (see above).

Galaxies satisfying the above criteria comprise the full SDSS sample, which includes all galaxies on the main-sequence and is comparable to the CANDELS sample. In addition, to minimize possible environmental effects on the structure of the lower main-sequence and entrance to the green valley, we extracted a centrals-only subsample by matching to the group catalog of Yang et al. (2012) and requiring mass rank $M_{\text{rank}} = 1$. Finally, since another common way to select star-forming galaxies is by their emission lines, we constructed yet another subsample by requiring strong emission (S/N of [OIII] $\lambda 5007$, H β , H α , [NII] $\lambda 6584 > 5$) and location in the BPT diagram in the H II region of Kauffmann et al. (2003b).

3. RESULTS

3.1. No Trend Between SFR and Effective Radius

We turn now to correlations between SFR and radius. Before continuing, we note that the RMS scatter in $\log R_e$ at fixed M_* is only about 0.25 dex (van der Wel et al. 2014), and it might be thought that measurement errors might mask real size differences. To allay that concern, Figure 3 shows sample thumbnail images of large and small galaxies from both samples. In each mass and redshift bin, the two small galaxies on the left are randomly selected from galaxies with $\Delta \log R_e < -0.2$ dex, and the two large galaxies on the right are randomly selected from galaxies with $\Delta \log R_e > 0.2$ dex. The SDSS images at low redshift come from *gri* composites while CANDELS images are generated from HST/ACS F814W, F125W, and F160W. Each image is presented at the same physical scale of 30 kpc on a side. It is seen that galaxies have distinctly different sizes and that R_e does a good job of separating small galaxies from large ones. Since surface density is proportional to r^{-2} , the observed range of galaxy size results in a large change in surface density. A typical difference of ± 0.25 dex in radius would cause surface densities to differ by 1 whole dex.

Figure 4 now plots the residuals $\Delta \log R_e$ vs. $\Delta \log \text{sSFR}$ for CANDELS ridgeline galaxies divided into stellar mass and redshift bins. Points are color-coded by A_V obtained from SED fitting. Ridgeline galaxies with $\Delta \log \text{sSFR} \geq -0.45$ dex are in the white areas; green valley (GV) galaxies are in the shaded regions. Compared to ridgeline galaxies, the latter tend to have smaller radii and lower A_V . For ridgeline galaxies only, there is no strong trend seen between $\Delta \log \text{sSFR}$ and $\Delta \log R_e$ in any mass-redshift bin.

Least-squares linear fits of $\Delta \log \text{sSFR}$ on $\Delta \log R_e$ for ridgeline galaxies are shown as the red solid lines, computed by minimizing residuals in $\Delta \log \text{sSFR}$. Slopes and errors are listed in the upper-right corner of each panel. Though slopes are small, a trend seems to exist with mass: slopes in the lowest-mass bin are slightly negative (lower SSFR in larger galaxies), slopes in the second-largest bin are slightly positive, and slopes in the third-largest bin are significantly positive (the most massive bin is uncertain due to small samples). This trend follows the numbers of galaxies near the bottom of the ridgeline and in the green valley, which are also increasing with mass. Since these galaxies have both small radii and low SFR, their presence tends to create a positive slope. We note that the trend for galaxies well below the ridgeline to have smaller radii was also seen by Brennan et al.

(2017) for CANDELS, but we have now shown that this trend is correlated with the number of green valley galaxies. An inference might be that a significant fraction of star-forming galaxies below the ridgeline at high mass is actually en route to the green valley, i.e., that they are not bobbing temporarily below the ridgeline and are about to return. We return to this population briefly in Section 5. However, the bigger picture is that even the largest slope of ~ 0.2 is small, amounting to a total variation of only 0.1 dex ($=25\%$) from small (-0.25 dex) to large ($+0.25$ dex) galaxies. In addition, by comparing the slopes in different redshift bins, we do not see significant evolutionary trends with time.

We note that, if gas fractions are all the same for galaxies in a given stellar mass bin, large, diffuse galaxies should have lower SFRs than compact, dense ones, according to the KS law. This is illustrated in the cartoon in Figure 1, which compares two galaxies of the same stellar mass, one large and one small. The left panel describes the situation with identical gas fractions. Spreading the same amount of gas over a wider area reduces its ability to form stars owing to the exponent 1.4 in the KS law, which exceeds unity. The predicted slope is -0.80 for $\Delta \log \text{sSFR}$ vs. $\Delta \log R_e$, which is shown as the gray lines in Figure 4.

For comparison, the case of constant star formation rate is shown in the right panel of Figure 1, where it is shown that the larger galaxy must have more gas in order to make the same amount of stars. The predicted slope is in that case $+0.57$ for $\Delta \log \text{sSFR}$ vs. $\Delta \log R_e$.

A new version of the KS law has recently been proposed called the extended Kennicutt-Schmidt (eKS) law, $\Sigma_{\text{SFR}} \propto \Sigma_{\text{gas}} \Sigma_*^{0.5}$ (Shi et al. 2011), which takes stellar surface density into account and improves the relation for low-surface-brightness galaxies (Shi et al. 2018). The predicted slope for eKS is -1.00 . Both predicted relations are far steeper than the data. Hence, if these galaxies obey the KS law or the eKS law, larger galaxies must have larger gas fractions. This is confirmed for local galaxies in Section 4 below.

Figure 4 is an opportunity to show the locations of the compact star-forming galaxies identified by Barro et al. (2014) in relation to other objects at the same redshift. These so-called “blue nugget” galaxies were identified as having particularly small sizes compared to typical main-sequence ridgeline objects. We select them using the same definition $\log(M_*/r_e^{1.5}) > 10.45 M_\odot/\text{kpc}^{-1.5}$ used by Barro et al. (2014) and plot them with black circles in Figure 4. Most compact star-forming galaxies in our sample appear at redshifts $z > 1.5$ and either lie on the main-sequence or below it, consistent with the scenario that blue nuggets are in the process of quenching and will soon evolve into red nuggets (Barro et al. 2014) by $z = 1.5$.

Figure 5 shows $\Delta \log R_e$ vs. $\Delta \log \text{sSFR}$ for the SDSS sample. The first row shows the full sample, which follows the same selection criteria as CANDELS. The second row shows central galaxies only, while the third row selects strongly star-forming galaxies using the emission-line criterion (see Section 2.2). Least-squares fits are calculated for each panel as in Figure 4, and the slope and error are shown in each panel. The predicted slopes according to the KS law are the dashed lines.

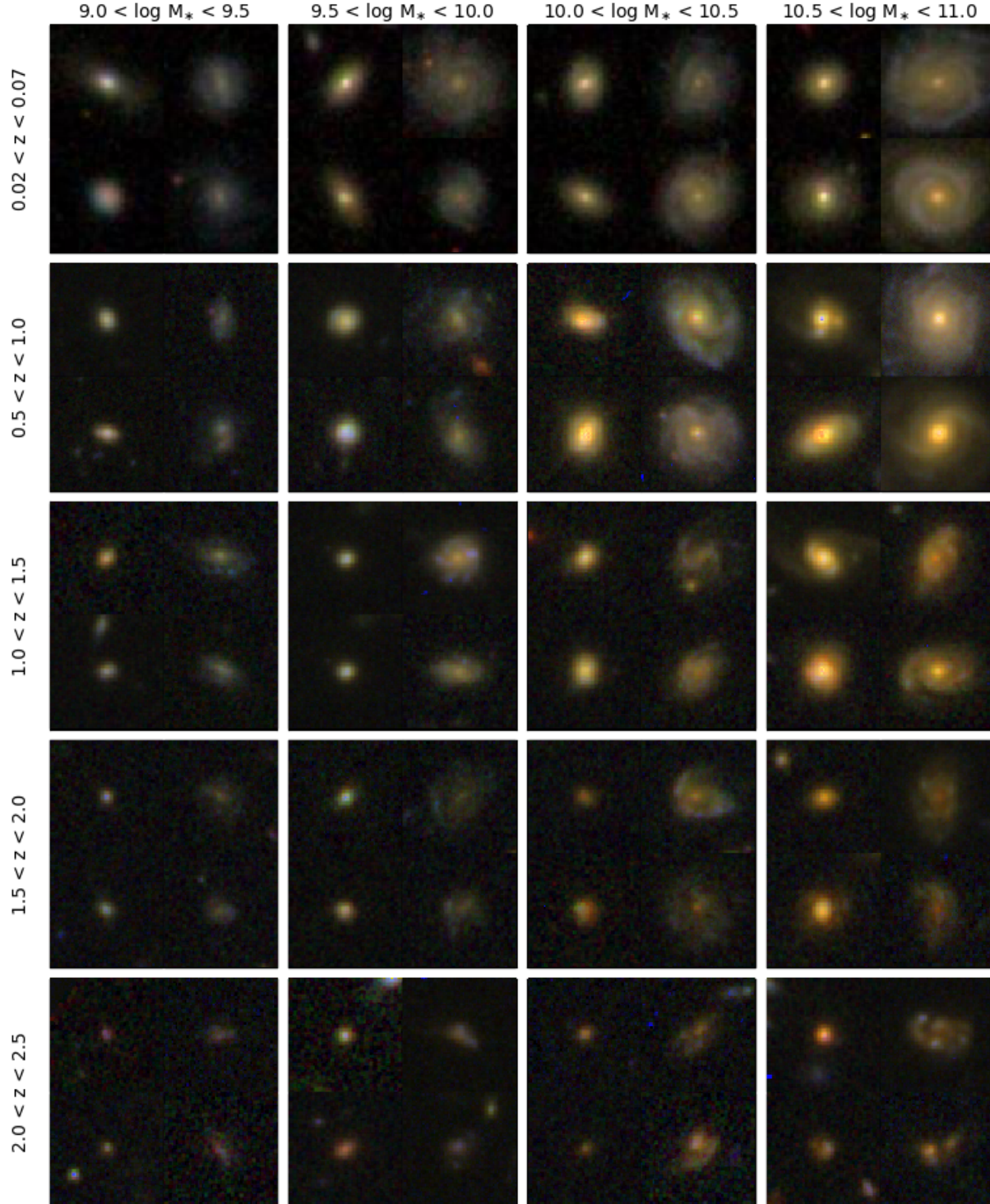


FIG. 3.— Color thumbnail images of a random sample of CANDELS and SDSS star-forming galaxies demonstrating the difference between large and small galaxies. Local SDSS images come from *gr**i* composites (top row); CANDELS images are generated from HST/ACS F814W, F125W and F160W. In each mass and redshift bin, the two small galaxies on the left are randomly selected from galaxies with $\Delta \log R_e < -0.2$ dex, and the two large galaxies on the right are randomly selected from galaxies with $\Delta \log R_e > 0.2$ dex. All images are scaled to span 30 kpc on a side.

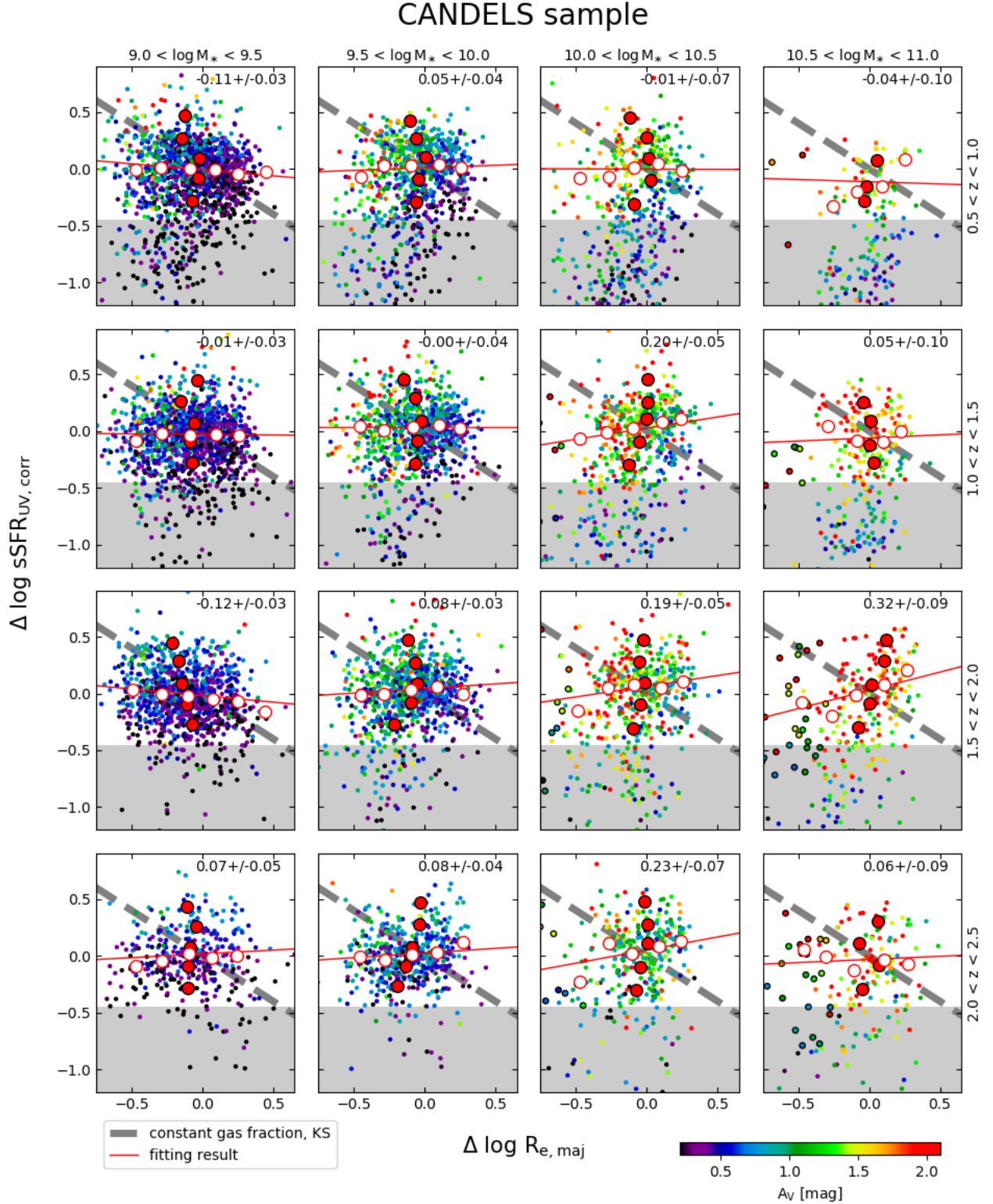


FIG. 4.— Star formation rate residual $\Delta \log \text{sSFR}$ vs. radius residual $\Delta \log R_e$ (semi-major axis) for face-on ($b/a > 0.5$) CANDELS galaxies located in the star-forming region of the UVJ diagram. $\Delta \log \text{sSFR}$ and $\Delta \log R_e$ are the residuals from the star-forming main-sequence and the mass-size relations respectively (Fang et al. 2018). Points are color-coded by A_V from SED fitting. Galaxies with $\Delta \log \text{sSFR}$ more than 0.45 dex below the main-sequence ridgeline (in the shaded region) are classed as green valley galaxies and are excluded from the fits. Solid lines indicate linear least-square fits of $\Delta \log \text{sSFR}$ on $\Delta \log R_e$ for star-forming ridgeline galaxies only (white areas). The resulting slopes and errors are listed in the top-right corner of each panel. The dashed lines are the predicted relations following the KS law under the assumption of constant gas fractions at fixed stellar mass. Their slopes are -0.8 . The solid red points are medians of $\Delta \log R_e$ at fixed sSFR, the solid white points are medians of $\Delta \log \text{sSFR}$ at fixed R_e . Black circled points are galaxies that qualify as “blue nuggets” using the size-mass criterion of Barro et al. (2014). The data do not follow these predictions, indicating that smaller galaxies must have lower gas fractions. Details are discussed in Section 3.1.

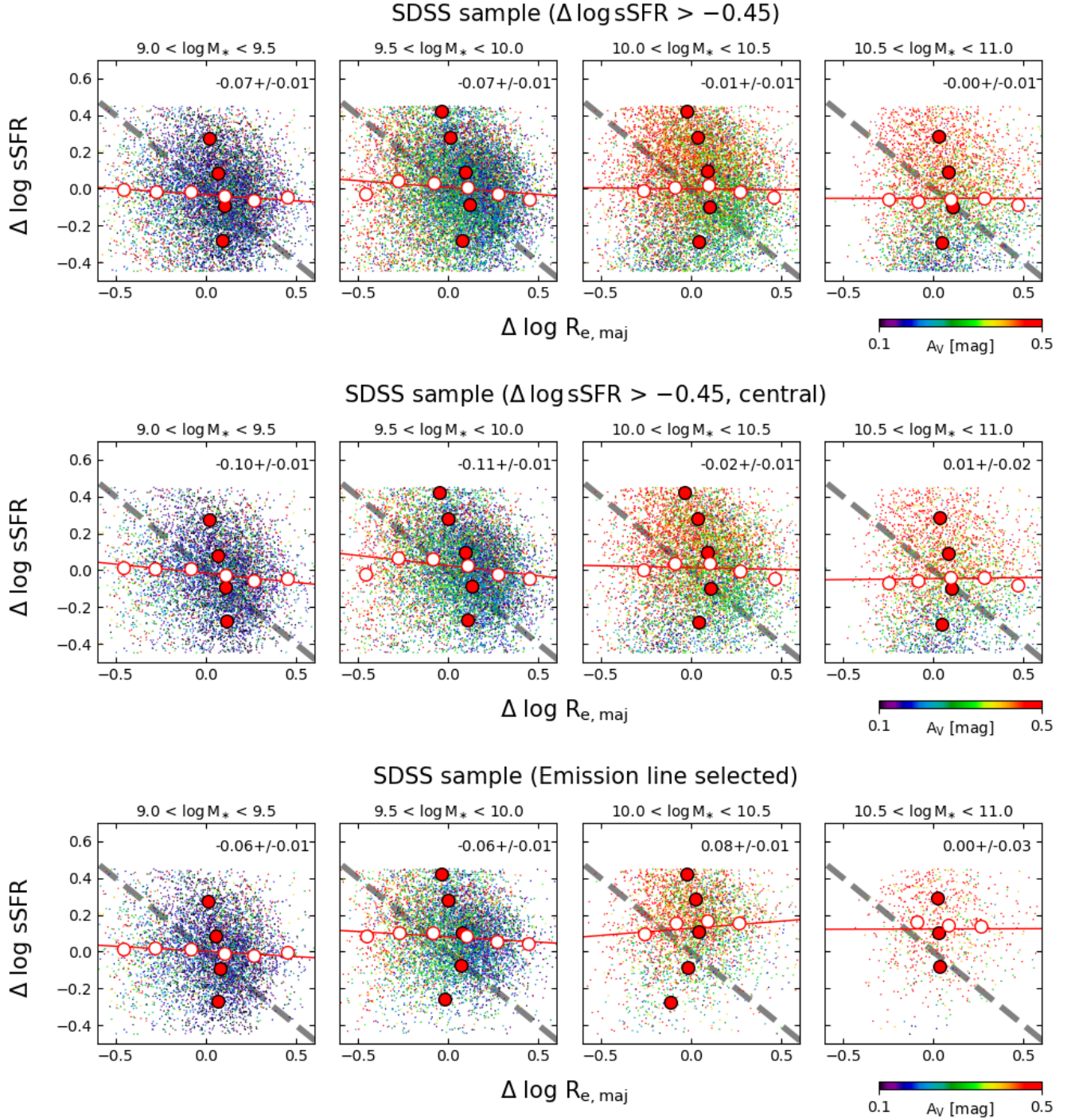


FIG. 5.— $\Delta \log \text{sSFR}$ versus $\Delta \log R_e$ for the SDSS sample. Galaxies have $z = 0.02\text{--}0.07$ and are face-on. Top row: All galaxies. Middle row: Central galaxies only. Bottom row: Emission line sample (see Section 2.2 for sample descriptions). Points are colored by A_V from UV-optical SED fitting. The solid lines are observed fits to $\Delta \log \text{sSFR}$ on $\Delta \log R_e$. The dashed lines are the predictions from the KS law. The solid red points are medians of $\Delta \log R_e$ at fixed sSFR, the solid white points are medians of $\Delta \log \text{sSFR}$ at fixed R_e . Overall, these samples also show little trend in SFR vs. size, in agreement with the CANDELS results in Figure 4. Details are discussed in Section 3.1.

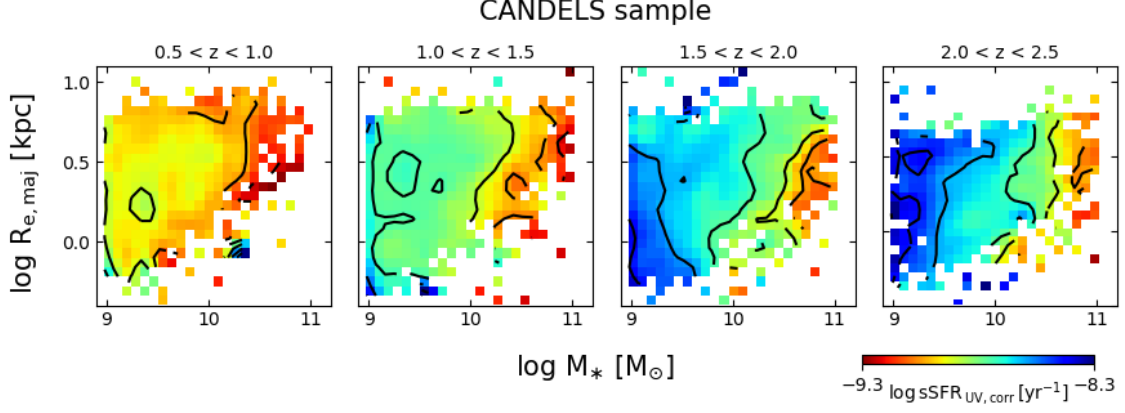


FIG. 6.— The mass-size relation for star-forming galaxies in different redshift bins in CANDELS. Stellar mass and galaxy radius are binned and colored by the median $\log \text{sSFR}$ in each pixel. The black contours indicate the $\log \text{sSFR}$ level in steps of 0.25 dex. The contours are roughly vertical but slightly tilted at intermediate mass, which is consistent with the small positive slopes seen in Figure 4.

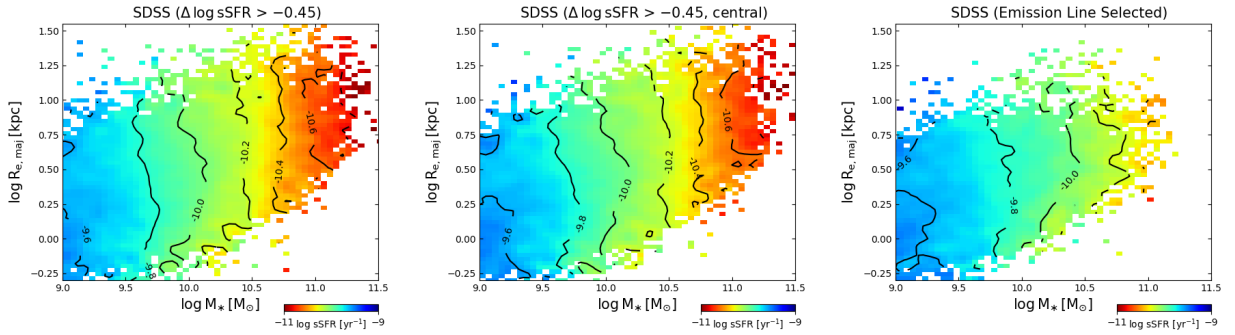


FIG. 7.— The mass-size relation for star-forming galaxies in SDSS samples. Left: all galaxies; middle: central galaxies only; right: emission-selected sample. Stellar mass and galaxy size are binned and colored by the median $\log \text{sSFR}$ in each mosaic. The black contours indicate the $\log \text{sSFR}$ level in steps of 0.2 dex. As for CANDELS in Figure 6, the contours are basically vertical but slightly tilted, consistent with the small positive slopes seen in Figure 5.

As in Figure 4 for CANDELS, the slopes are all quite flat; the choice of sample also has little effect. The second row shows central galaxies only. Removing the satellites appears to have removed some of the small galaxies below the ridgeline at low masses, and the star-forming sample looks a bit cleaner. However, the fitted slope is unaffected. The emission-selected sample in the third row has a tail of low-SFR galaxies with small sizes. This population resembles the similar population in CANDELS and seems stronger in the emission sample than the other samples. As before, however, the computed slopes are all small.

In conclusion, the result from SDSS agrees with CANDELS in showing that smaller star-forming ridgeline galaxies contain less gas at fixed M_* if galaxies obey the KS or eKS star-forming laws.

We note in passing that the data points are colored by A_V in Figures 4 and 5. Even though both samples are deliberately restricted to face-on galaxies with $b/a > 0.5$ in order to minimize dust effects, nevertheless two trends are evident. The stronger is that more compact galaxies have higher A_V than larger galaxies (this effect looks more prominent in SDSS, but note the compressed color range compared to CANDELS – CANDLES is just noisier). On the face of it, this is puzzling because we have just shown that more compact galaxies have *less* gas, so why do they have higher A_V ? The answer is that A_V varies as the *surface density* of gas, not the gas fraction. Compact galaxies evidently produce larger A_V on account of their smaller area even with less total gas. The second trend is that galaxies with high $\Delta \log \text{sSFR}$ have higher A_V at fixed $\Delta \log R_e$. This trend is plausible, since higher SFR at fixed size implies more gas, and thus more dust. Both trends will be explored in future papers.

Figures 6 and 7 summarize the preceding data by plotting $\log \text{sSFR}$ as a function of position in the mass-size diagrams. Stellar mass and galaxy size are binned and colored by the median $\log \text{sSFR}$ in each pixel. The CANDELS sample in Figure 4 is a bit noisy and the contours do not vary smoothly, probably due to the smaller sample size or limitation of signal-to-noise ratio. Overall, however, they are roughly vertical but are slightly tilted at intermediate mass, consistent with the small positive slopes in Figure 4. In the SDSS sample (Figure 7), both the full and central samples show nearly vertical contours, but the emission-selected contours are more tilted, consistent with the larger slopes for this sample in Figure 5.

To summarize, we have compared $\Delta \log \text{sSFR}$ vs. $\Delta \log R_e$ for star-forming ridgeline galaxies over a wide range of stellar mass and redshift. Neither CANDELS nor SDSS shows a large trend in star formation rate vs. galaxy radius at fixed stellar mass. This result does not depend on the SFR indicator used, nor does it appear to vary much with sample selection (in SDSS). The assumption of constant gas fraction at fixed stellar mass would predict a large negative trend between $\Delta \log \text{sSFR}$ and $\Delta \log R_e$, which does not appear in the real data. If galaxies obey a density-dependent star-forming law like the KS law or its relatives, these results indicate that more compact galaxies have lower gas fractions.

3.2. Comparison with Previous Work

We return now to the discussion of previous work that was initiated in the Introduction. The basic question is whether the properties of galaxies are correlated with their position above or below the star-forming main-sequence. Our approach here has been to measure the slope of the main-sequence star-forming residual $\Delta \log \text{sSFR}$ with radius residuals $\Delta \log R_e$. This is the same approach used by Whitaker et al. (2017) for CANDELS galaxies and by Omand et al. (2014) for SDSS galaxies. These papers found no significant correlation if the sample is restricted to ridgeline galaxies, and we agree.

An alternative approach is to use the main-sequence residual $\Delta \log \text{sSFR}$ as the basic variable and look for trends vs. that. This is the approach used by Wuyts et al. (2011) for SDSS and CANDELS galaxies and by Brennan et al. (2017) for GAMA and CANDELS galaxies. As is well known, if there is significant scatter between two quantities X and Y , the median of X on Y can behave differently from the median of Y on X . To facilitate comparison with Wuyts et al. (2011) and Brennan et al. (2017), Figures 4 and 5 cut the samples horizontally in slices of $\Delta \log \text{sSFR}$ and show the median value in each slice (red circles). The SDSS points reproduce closely the trend found by Brennan et al. (2017) using GAMA galaxies, showing the largest value $\Delta \log \text{sSFR}$ on the ridgeline and declines amounting to ~ 0.2 dex above and below it. This also agrees with Wuyts’ analysis of SDSS although the trends there were slightly larger. In CANDELS, none of the three works reports any significant trend in $\Delta \log R_e$ across the main-sequence, all trends both above and below the SFMS being ≤ 0.1 dex. The data in Figure 4, though noisy, agree with this. However, galaxies well below the ridgeline but still with $\Delta \log \text{sSFR} > -0.45$ dex appear to be a little smaller in all works, and we have wondered whether this population is slowly quenching and moving towards the green valley.

In summary, the lack of any significant trend between $\Delta \log R_e$ and $\Delta \log \text{sSFR}$ for star-forming ridgeline galaxies is now well established from several different studies using different samples of galaxies at different redshifts. Our study has divided galaxies by mass and redshift and plotted each mass-redshift bin as individual points. This has revealed a probable population of compact galaxies below the SFMS that may be en route to the green valley and shown that this population is stronger at high masses. We return to this population briefly in Section 5. Our use of central galaxies and exclusion of mergers and galaxies with bad GALFIT fits has also removed any concern that improper sample selection might have colored previous results. Finally, color-coding by A_V has revealed systematic trends for stronger reddening in galaxies above the SFMS and in galaxies with smaller radii. These trends will be followed up in future papers.

4. CONFIRMATION USING LOCAL GAS MEASUREMENTS

As noted, these results imply that the total gas fraction ($\text{H}_2 + \text{HI}$) must be lower in small galaxies at fixed stellar mass. It would be good to have direct confirmation of this, but observations of gas fractions are difficult at high redshift. Indirect support comes from observations of H_2 ,

as summarized by Tacconi et al. (2018). They find that the depletion time of molecular gas (M_{H_2}/\dot{M}_*) does not vary with R_e on the main-sequence. Since SFR also does not vary, this means that all galaxies of a fixed mass but different radii must have the *same* mass of H_2 . The KS and eKS laws then predict that the ratio $M_{\text{gas}}/M_{\text{H}_2}$ should be lower in smaller galaxies since their surface densities are higher, which favors conversion of H I to H_2 . Hence, total gas should be smaller. We therefore obtain consistency with our results, but only by invoking the star formation laws. It would be good to obtain confirmation for at least some populations of galaxies without appealing to those laws.

This is possible at low redshift using measurements of local galaxies from the xCOLD GASS and xGASS surveys (Saintonge et al. 2017; Catinella et al. 2018). xCOLD GASS measured molecular hydrogen in a representative sample of 532 SDSS-selected galaxies with $M_* > 10^9 M_\odot$ using $\text{CO}(1-0)$ on the IRAM-30m telescope. xGASS measured neutral hydrogen in 1200 galaxies in the same mass range using the Arecibo telescope. We only select galaxies on the main-sequence using $\Delta \log \text{sSFR} > -0.45$ dex. Figure 8 plots the results. The upper-left inset shows the basic data of f_{gas} vs. M_* . Gas fraction is seen to decline smoothly as a function of stellar mass and is well fit by the linear least squares fit of f_{gas} on M_* (black line). Residuals relative to this line are plotted vs. $\Delta \log R_e$ in the main panel. Points are color-coded by stellar mass, and no systematic departures with mass are seen. A least-squares fit of Y on X is shown by the solid line. The dashed line is the predictions from the SFR surface density density ($0.5 \times \text{SFR}/\pi R_e^2$) assuming the KS law (assuming eKS law would have a slightly steeper slope). The data are consistent overall with the prediction that smaller galaxies have less gas. From small to large galaxies, gas fractions vary on average by a factor of 2-3.

Besides, we also verify (not shown) that galaxies lying above the relation in Figure 8 have higher sSFR. That is, after all trends in M_* and R_e are removed, we find the expected KS correlation that galaxies with more gas make stars faster.

5. DISCUSSION

Our major observational result is that the star formation rate does not depend significantly on galaxy radius at fixed stellar mass for galaxies on the star-forming ridgeline. This is true at all masses $M_* > 10^{9.0} M_\odot$ and redshifts $z < 2.5$. Density-based star formation laws like the KS law or the extended KS law then predict that compact galaxies should have smaller total gas fractions than diffuse galaxies because of their higher gas densities. High densities in turn mean higher star formation rates because the exponent in the KS and related laws is greater than 1.0 (1.4–1.5 in various versions of the KS law, see Kennicutt (1998)). If the power is unity, it does not matter how the gas is distributed, and the star formation efficiency is the same for all gas distributions. This is the case for the molecular law (as reviewed in Kennicutt & Evans (2012)), which is consistent with a model in which H_2 is located in individual clouds and the global distribution of those clouds does not matter. H_2 mass at fixed M_* should therefore be constant with

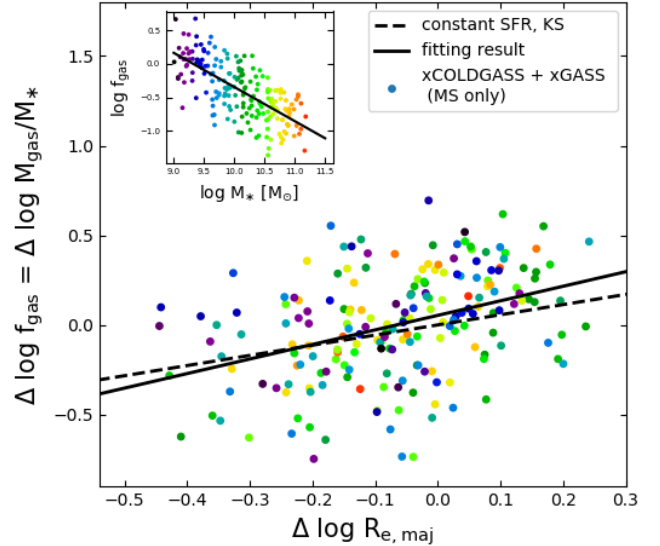


FIG. 8.— Gas fraction vs. galaxy size for star-forming galaxies based on data from the xCOLD GASS and xGASS surveys. Only galaxies on the star formation main-sequence are shown. Points are colored by stellar mass. A linear least-squares relation is fitted to gas fraction vs. stellar mass in the upper left corner, and residuals relative to this relation are plotted vs. galaxy-size residual in the main panel. The dashed line is the predictions from the KS law. Overall, the data agree well with the predicted trend that smaller galaxies should have less gas at fixed stellar mass. The variation from small to large galaxies is a factor of 2-3.

size, and the smaller total gas masses in smaller galaxies are due to more efficient conversion of H I to H_2 .

In summary, total gas fraction should be lower in compact star-forming galaxies, but molecular gas content should be the same. Similar conclusions were reached by Popping et al. (2015), who studied CANDELS galaxies. They used similar star formation rates to our values based on UV-optical SED fitting, but their conversion from star formation rate to gas density was more elaborate, taking mid-plane gas pressure into account. Nevertheless, the two approaches are fundamentally comparable, and the similar conclusions are expected.

5.1. The Equilibrium Bathtub Model

Now we turn to interpret these results by assuming the equilibrium bathtub model. The basic equation for the model can be written (Dekel & Mandelker 2014; Rodríguez-Puebla et al. 2016):

$$\dot{M}_{\text{in}} = \dot{M}_* + \dot{M}_{\text{out}} + \dot{M}_{\text{ISM}} = (1 + \eta)\dot{M}_* + \dot{M}_{\text{ISM}}, \quad (1)$$

or,

$$\dot{M}_{\text{ISM}} = \dot{M}_{\text{in}} - (1 + \eta)\dot{M}_* = 0. \quad (2)$$

where \dot{M}_{in} is the accretion rate of pristine gas into the halo, \dot{M}_* is the star formation rate, \dot{M}_{out} is the outflow rate, and \dot{M}_{ISM} is the rate of mass accumulation in the ISM. Using the mass-loading factor η for the wind results in the second line. Here we have assumed that all gas that falls into the halo finds its way soon into the galaxy, i.e., that gas is not accumulating in the halo. We have also assumed that no wind gas falls back in, i.e., that it either escapes the halo or is inert. Dekel & Mandelker

(2014) showed that the equilibrium solution under these circumstances is $\dot{M}_{\text{ISM}} = 0$, which is reached asymptotically over time. This is explained by the feedback in the sign of \dot{M}_* , which varies negatively with M_{ISM} . Errors in M_{ISM} are therefore self-correcting, and the star formation rate is self regulating. The equilibrium solution is obtained provided the response time for changes in \dot{M}_* is short compared to variations \dot{M}_{in} . Dekel & Mandelker (2014) adopt for t_* the local crossing time in the galaxy, or R_d/V_d , while t_{infall} is the crossing time of the halo, or $R_{\text{vir}}/V_{\text{vir}}$, which is ~ 10 times longer. The needed inequality is therefore satisfied.

The next step notes that, if $\dot{M}_{\text{ISM}} = 0$, then $(1 + \eta)\dot{M}_* = \dot{M}_{\text{in}}$, i.e., that the star formation rate is proportional to the halo gas accretion rate. Eq. 2 says that there are only two ways of increasing the star formation rate: larger halo accretion rate (\dot{M}_{in}) or a weaker wind (smaller η). In particular, increasing the gas surface density (by, say, reducing galaxy radius) or increasing the local star formation efficiency (by, say, raising the coefficient in the KS law) does not make more stars — it cannot because the total gas supply is limited. The only consequence of raising the local star formation efficiency is to reduce the mass of the ISM that it takes to support the same star formation rate. In other words, the gas density is adjusting itself to accommodate the halo accretion rate, and the proper way to read the KS law is backwards, from Y -axis to X -axis, as was suggested in the Introduction.

5.2. The Bathtub Model with Variable Concentration

We now use the equilibrium bathtub model to see how galaxies respond to varying halo concentration. The focus on concentration is motivated by an analysis of galaxy radii from the VELA and NIHAO simulations by Jiang et al. (2019), who find that

$$R_e = 0.02R_{\text{vir}}(C/10)^{-0.7} \quad (3)$$

where R_e is the 3-D mass-weighted half-mass radius, and C is halo concentration. The trend with C reflects the fact that galaxies in higher-concentration halos are smaller because a larger fraction of their mass is accreted early, making a smaller and denser galaxy. As a result halos with higher concentration at fixed M_{vir} and fixed epoch have lower \dot{M}_{in} . This is illustrated in Figure 9, which plots the bivariate distributions of specific halo accretion rates, $\dot{M}_{\text{in}}/M_{\text{vir}}$, vs. halo mass from the Rockstar halo catalog (Behroozi et al. 2019) based on the Bolshoi-Planck dark-matter simulation (Klypin et al. 2016; Rodríguez-Puebla et al. 2016; Lee et al. 2017). The data are in panels binned by halo mass and redshift, and the lines show the mean and $\pm 1\text{-}\sigma$ contours. A good fit to the average instantaneous specific accretion rate is:

$$\dot{M}_{\text{in}}/M_{\text{vir}} \sim (C/\langle C \rangle)^{-0.5}, \quad (4)$$

where C is the instantaneous concentration. The negative trend reflects the fact that high-concentration halos accreted more of their mass early and thus accrete less mass later. Putting the two equations together yields the prediction:

$$\dot{M}_{\text{in}}/M_{\text{vir}} \sim R_e^{0.7}. \quad (5)$$

Hence, the halo mass accretion rate should be lower in compact galaxies. At fixed M_{vir} , M_* and η , Eqs. 2 and 5 imply $\Delta \log \text{sSFR}/\Delta \log R_e = +0.7$. In the context of Figures 4 and 5, this would be a strong trend and easily detected if present. Since no trend is seen, there must be another offsetting effect, but the only other knob in the model is to turn down the wind strength. This could plausibly work in the right direction since more compact galaxies have higher V_{esc} (at fixed M_*) and would thus have weaker winds.

A quantitative estimate of the lifetime impact of concentration variations on star formation rates is available from previously unpublished data from the Dutton semi-analytic model (Dutton et al. 2010), which divides disk galaxies into annuli and calculates the local mass-loading factor η at each radius. Their winds are weaker in deeper potential wells and scale either as $\eta \sim V_{\text{esc}}^{-1}$ (momentum-driven winds) or as $\eta \sim V_{\text{esc}}^{-2}$ (energy-driven winds). Model data are available on a collection of halos having energy-driven winds that are started off a statistically realistic distribution of halo concentrations that are evolved appropriately over time. The scatter in R_e at fixed M_* is ~ 0.25 dex, a good match to observations, but there is no trend in the results for smaller galaxies to have lower star formation rates, at either $z = 3$ or $z = 0$. Smaller galaxies originate from higher-concentration halos, as expected, but their weaker winds fully cancel the effect of lower halo infall. This is a valuable simulation since it attempts to model the effects of wind and concentration over an entire galaxy’s lifetime. The lesson learned is that wind differences must be strong — a parallel collection of galaxies with momentum-driven winds, which vary less with galaxy size, shows remaining correlated residuals in $\Delta \log \text{sSFR}$ vs. $\Delta \log R_e$.

This discussion brings us back to the EAGLE simulations, which exhibit many of the expected effects of halo concentration (and formation-time) differences. Matthee et al. (2017) study scatter about the stellar-mass-halo-mass relation, which they find to be strongly correlated with halo concentration: more concentrated halos form stars more rapidly, have weaker winds, and higher stellar mass at fixed halo mass (see also Wechsler et al. 2002; Zhao et al. 2009; Jeason-Daniel et al. 2011; Ludlow et al. 2014; Correa et al. 2015; Kulier et al. 2019). Matthee et al. (2017) note that initial concentration differences are amplified by the presence of baryons, which rapidly collect in the central region, further deepening the central potential. Residuals about the SFMS relation are therefore even bigger when baryons are included. Davies et al. (2019) and Oppenheimer et al. (2019) study the effects of concentration on the gas content of halos in EAGLE. More tightly bound halos have higher concentration, earlier formation time, bigger black holes, lower gas content due to higher black hole feedback, and thus earlier quenching times. Finally, Furlong et al. (2017) study residuals about the star formation main-sequence and find that smaller galaxies at fixed mass have lower star formation rates today. This agrees with the predicted lower accretion rates in high-concentration halos (cf. Figure 9) but disagrees with our data showing no trend. Perhaps the EAGLE wind prescription does not weaken winds enough in high-concentration halos. We have not been able to find a discussion in the EAGLE

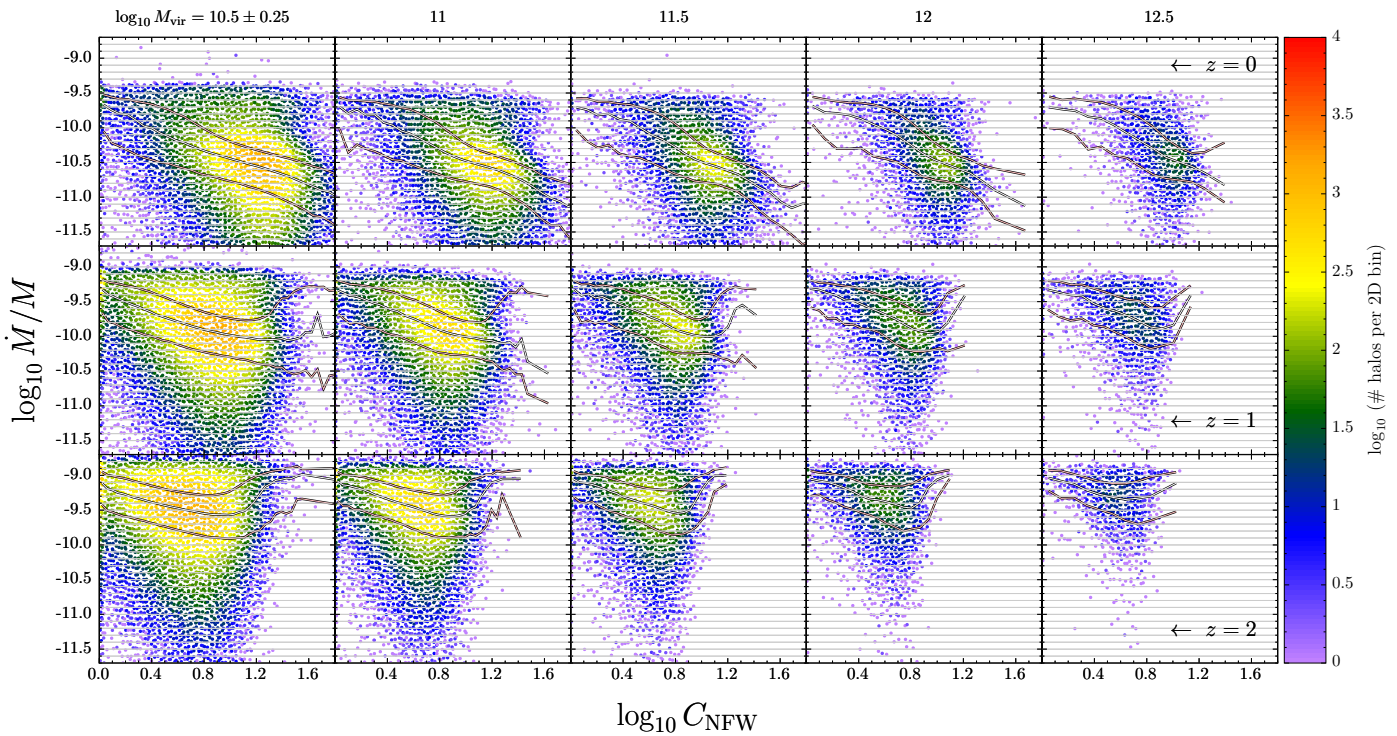


FIG. 9.— Bivariate distributions of specific halo mass accretion rate vs. halo concentration parameter C_{NFW} (Navarro et al. 1996) binned by mass and redshift. The lines indicate mean $\langle \dot{M}_{\text{in}}/M_{\text{vir}} \rangle$ at each C_{NFW} and the $\pm 1\text{-}\sigma$ contours. An average fit to all bins is $\dot{M}_{\text{in}}/M_{\text{vir}} \sim (C/C)^{-0.5}$. High-concentration halos accrete less at any epoch because they accrete a greater fraction of their mass earlier and less later.

literature explicitly treating the joint effects of concentration on galaxy radii and winds.

Finally we remind readers once again of the correlation between galaxy size and concentration in the NIHAO and VELA simulations (Jiang et al. 2019). This motivated Chen et al. (2019) to posit concentration as the second halo parameter driving residuals in R_e vs. M_* . Smaller (i.e., denser) galaxies make bigger black holes in their picture, which causes them to quench earlier in a manner similar to the EAGLE simulations. The notion that halo concentration modulates black hole mass goes back to Booth & Schaye (2010), who noted that bigger black holes form in halos with higher binding energy in their simulations. The cause in their case was weaker AGN feedback, not stellar feedback, but the same idea was present, namely, that halo concentration is a powerful second parameter influencing the life histories of galaxies.

6. CONCLUSIONS

In this work, we have investigated correlations between star formation rate and galaxy radius for star-forming galaxies on the main-sequence. We have benefited from using large samples from the CANDELS and SDSS surveys, and our analysis covers a wide range of stellar mass and redshift. Since both SFR and R_e correlate with stellar mass and redshift, we remove these trends and study the residual correlations. Our conclusions are as follows:

1. In accordance with previous works, we confirm that

there is no significant correlation between the star formation rate and R_e at fixed stellar mass for $M_* \leq 10^{10} M_\odot$. This is true for both the CANDELS and SDSS samples at all redshifts.

2. A weak positive trend in star formation rate with R_e appears above $10^{10} M_\odot$ in CANDELS. The main cause seems to be the presence of small-radius galaxies well below the main-sequence, which are plausibly evolving slowly to the green valley. These galaxies are visible in the SDSS sample also.
3. If f_{gas} were constant in all main-sequence galaxies at a given stellar mass, the Kennicutt-Schmidt and related density-dependent star formation laws would predict a strong upward trend in star formation rate towards smaller radius. This trend is not seen, which means that smaller galaxies must have lower f_{gas} .
4. This prediction is confirmed by comparing to the measured gas contents of local galaxies in the xCOLD GASS and xGASS surveys. The magnitude of the effect is about a factor of 2-3 from small to large galaxies.
5. The lower gas fraction in smaller galaxies is consistent with the equilibrium bathtub model for galaxy evolution, in which the gas density adjusts itself to make stars at the rate mandated by the difference

between the halo mass accretion rate and the mass loss rate due to winds. In this reading, the star formation rate should be regarded as the independent variable in the KS law (set by halo minus wind), and the gas density is the dependent variable that results from applying the microphysics of the KS law. Simply stated, small galaxies have less gas because their higher-density gas is more efficient at making stars.

6. Results from NIHAO, VELA, and EAGLE simulations suggest that halo concentration is an important second parameter in determining galaxy radius, R_e , and that smaller galaxies form in higher-concentration halos.
7. Higher-concentration halos accrete more slowly at all masses $M_* > 10^9 M_\odot$ back to $z \sim 3$. Since small galaxies make stars at the same rate as large galaxies, this implies that stellar winds are weaker in deeper potential wells.

We caution here that the bathtub model involves several simplifying assumptions, although previous studies shown that it can successfully predict many galaxy scaling relations. For example, it does not describe the cycles between ISM and circumgalactic medium, which actually contribute a significant budget of baryons according to recent observations. Our prediction is a direct consequence of that assumption, and should be tested in more sophisticated simulations or future observations.

In summary, evidence is accumulating from several different directions that star-forming galaxies are a two-parameter family whose properties are set by halo mass and halo concentration. The plot of R_e vs. M_* may be one of the clearest mappings of this 2-D relationship. At the same time, models suggest that halo concentration may modulate many other aspects of galaxy evolution as well, such as wind strength (and therefore composition), star formation rate, halo gas fraction, and black hole mass. All of these quantities are tightly interwoven throughout a galaxy's lifetime, and concentration is not perfectly constant over time. Stochastic short-term variations in halo mass accretion add further scatter, especially to star formation histories. An additional question is whether concentration is the right variable, or whether halo formation time is a better predictor. The complexity of the situation can therefore only be handled through simulations, but such simulations always have a number of free parameters, which are typically set by fitting to data. We suggest that properly fitting the map of star formation rates in R_e vs. M_* should be added to the

standard arsenal of observations used to calibrate galaxy simulations.

This work is based in part on observations taken by the CANDELS Multi-Cycle Treasury Program, which was supported under program number HST-GO-12060, provided by NASA through a grant from the Space Telescope Science Institute, which is operated by the Association of Universities for Research in Astronomy, Incorporated, under NASA contract NAS5-26555. Members of the CANDELS team at UCSC acknowledge support from NASA *HST* grant GO-12060.10-A and from NSF grants AST-0808133 and AST-1615730. LL acknowledges the support from the visiting program of Chinese Academy of Science and the National Science Foundation of China (No. U1831205, 11703063). AD was partly supported by NSF AST-1405962, BSF 2014-373 and GIF I-1341-303.7/2016. ZC acknowledges the NSFC grants (11403016, 11433003, 11673018) and Innovation Program 2019-01-07-00-02-E00032 of SMEC.

It is also based in part on data taken by the Sloan Digital Sky Survey. Funding for the SDSS and SDSS-II has been provided by the Alfred P. Sloan Foundation, the Participating Institutions, the National Science Foundation, the U.S. Department of Energy, the National Aeronautics and Space Administration, the Japanese Monbukagakusho, the Max Planck Society, and the Higher Education Funding Council for England. The SDSS Web Site is <http://www.sdss.org/>.

The SDSS is managed by the Astrophysical Research Consortium for the Participating Institutions. The Participating Institutions are the American Museum of Natural History, Astrophysical Institute Potsdam, University of Basel, University of Cambridge, Case Western Reserve University, University of Chicago, Drexel University, Fermilab, the Institute for Advanced Study, the Japan Participation Group, Johns Hopkins University, the Joint Institute for Nuclear Astrophysics, the Kavli Institute for Particle Astrophysics and Cosmology, the Korean Scientist Group, the Chinese Academy of Sciences (LAMOST), Los Alamos National Laboratory, the Max-Planck-Institute for Astronomy (MPIA), the Max-Planck-Institute for Astrophysics (MPA), New Mexico State University, Ohio State University, University of Pittsburgh, University of Portsmouth, Princeton University, the United States Naval Observatory, and the University of Washington.

The Rainbow database is operated by the Universidad Complutense de Madrid (UCM), partnered with the University of California Observatories at Santa Cruz (UCO/Lick, UCSC).

REFERENCES

- Abazajian, K. N., Adelman-McCarthy, J. K., Agüeros, M. A., et al. 2009, *ApJS*, 182, 543
 Barro, G., Pérez-González, P. G., Gallego, J., et al. 2011, *ApJS*, 193, 13
 Barro, G., Faber, S. M., Pérez-González, P. G., et al. 2014, *ApJ*, 791, 52
 Barro, G., Faber, S. M., Koo, D. C., et al. 2017, *ApJ*, 840, 47
 Behroozi, P., Wechsler, R. H., Hearin, A. P., & Conroy, C. 2019, *MNRAS*, 1134
 Blanton, M. R., Schlegel, D. J., Strauss, M. A., et al. 2005, *AJ*, 129, 2562
 Booth, C. M., & Schaye, J. 2010, *MNRAS*, 405, L1
 Bouché, N., Dekel, A., Genzel, R., et al. 2010, *ApJ*, 718, 1001
 Brammer, G. B., van Dokkum, P. G., & Coppi, P. 2008, *ApJ*, 686, 1503
 Brennan, R., Pandya, V., Somerville, R. S., et al. 2017, *MNRAS*, 465, 619
 Catinella, B., Saintonge, A., Janowiecki, S., et al. 2018, *MNRAS*, 476, 875
 Chabrier, G. 2003, *PASP*, 115, 763
 Chen, Z., Faber, S. M., Koo, D. C., et al. 2019, arXiv e-prints, arXiv:1909.10817
 Correa, C. A., Wyithe, J. S. B., Schaye, J., & Duffy, A. R. 2015, *MNRAS*, 450, 1514
 Daddi, E., Dickinson, M., Morrison, G., et al. 2007, *ApJ*, 670, 156

- Davé, R., Finlator, K., & Oppenheimer, B. D. 2012, *MNRAS*, 421, 98
- Davies, J. J., Crain, R. A., McCarthy, I. G., et al. 2019, *MNRAS*, 485, 3783
- Dekel, A., & Mandelker, N. 2014, *MNRAS*, 444, 2071
- Dekel, A., Zolotov, A., Tweed, D., et al. 2013, *MNRAS*, 435, 999
- Dutton, A. A., van den Bosch, F. C., & Dekel, A. 2010, *MNRAS*, 405, 1690
- Elbaz, D., Daddi, E., Le Borgne, D., et al. 2007, *A&A*, 468, 33
- Elbaz, D., Dickinson, M., Hwang, H. S., et al. 2011, *A&A*, 533, A119
- Fang, J. J., Faber, S. M., Koo, D. C., & Dekel, A. 2013, *ApJ*, 776, 63
- Fang, J. J., Faber, S. M., Koo, D. C., et al. 2018, *ApJ*, 858, 100
- Finlator, K., & Davé, R. 2008, *MNRAS*, 385, 2181
- Forbes, J. C., Krumholz, M. R., Burkert, A., & Dekel, A. 2014, *MNRAS*, 438, 1552
- Furlong, M., Bower, R. G., Crain, R. A., et al. 2017, *MNRAS*, 465, 722
- Galametz, A., Grazian, A., Fontana, A., et al. 2013, *ApJS*, 206, 10
- Grogin, N. A., Kocevski, D. D., Faber, S. M., et al. 2011, *ApJS*, 197, 35
- Guo, Y., Ferguson, H. C., Giallisco, M., et al. 2013, *ApJS*, 207, 24
- Hao, C.-N., Kennicutt, R. C., Johnson, B. D., et al. 2011, *ApJ*, 741, 124
- Jeeson-Daniel, A., Dalla Vecchia, C., Haas, M. R., & Schaye, J. 2011, *MNRAS*, 415, L69
- Jiang, F., Dekel, A., Kneller, O., et al. 2019, *MNRAS*, 488, 4801
- Kauffmann, G., Heckman, T. M., White, S. D. M., et al. 2003a, *MNRAS*, 341, 33
- Kauffmann, G., Heckman, T. M., Tremonti, C., et al. 2003b, *MNRAS*, 346, 1055
- Kennicutt, R. C., & Evans, N. J. 2012, *ARA&A*, 50, 531
- Kennicutt, Jr., R. C. 1998, *ApJ*, 498, 541
- Kennicutt, Jr., R. C., Hao, C.-N., Calzetti, D., et al. 2009, *ApJ*, 703, 1672
- Klypin, A., Yepes, G., Gottlöber, S., Prada, F., & Heß, S. 2016, *MNRAS*, 457, 4340
- Koekemoer, A. M., Faber, S. M., Ferguson, H. C., et al. 2011, *ApJS*, 197, 36
- Krumholz, M. R., & Dekel, A. 2012, *ApJ*, 753, 16
- Kulier, A., Padilla, N., Schaye, J., et al. 2019, *MNRAS*, 482, 3261
- Lee, C. T., Primack, J. R., Behroozi, P., et al. 2017, *MNRAS*, 466, 3834
- Lilly, S. J., Carollo, C. M., Pipino, A., Renzini, A., & Peng, Y. 2013, *ApJ*, 772, 119
- Ludlow, A. D., Navarro, J. F., Angulo, R. E., et al. 2014, *MNRAS*, 441, 378
- Matthee, J., & Schaye, J. 2019, *MNRAS*, 484, 915
- Matthee, J., Schaye, J., Crain, R. A., et al. 2017, *MNRAS*, 465, 2381
- Navarro, J. F., Frenk, C. S., & White, S. D. M. 1996, *ApJ*, 462, 563
- Nayyeri, H., Hemmati, S., Mobasher, B., et al. 2017, *ApJS*, 228, 7
- Noeske, K. G., Weiner, B. J., Faber, S. M., et al. 2007, *ApJ*, 660, L43
- Omand, C. M. B., Balogh, M. L., & Poggianti, B. M. 2014, *MNRAS*, 440, 843
- Oppenheimer, B. D., Davies, J. J., Crain, R. A., et al. 2019, *arXiv e-prints*, arXiv:1904.05904
- Popping, G., Caputi, K. I., Trager, S. C., et al. 2015, *MNRAS*, 454, 2258
- Rodríguez-Puebla, A., Behroozi, P., Primack, J., et al. 2016, *MNRAS*, 462, 893
- Rodríguez-Puebla, A., Primack, J. R., Behroozi, P., & Faber, S. M. 2016, *MNRAS*, 455, 2592
- Rujopakarn, W., Rieke, G. H., Weiner, B. J., et al. 2013, *ApJ*, 767, 73
- Saintonge, A., Catinella, B., Tacconi, L. J., et al. 2017, *ApJS*, 233, 22
- Salim, S., Boquien, M., & Lee, J. C. 2018, *ApJ*, 859, 11
- Salim, S., Lee, J. C., Janowiecki, S., et al. 2016, *ApJS*, 227, 2
- Santini, P., Ferguson, H. C., Fontana, A., et al. 2015, *ApJ*, 801, 97
- Schaye, J., Crain, R. A., Bower, R. G., et al. 2015, *MNRAS*, 446, 521
- Shen, S., Mo, H. J., White, S. D. M., et al. 2003, *MNRAS*, 343, 978
- Shi, Y., Helou, G., Yan, L., et al. 2011, *ApJ*, 733, 87
- Shi, Y., Yan, L., Armus, L., et al. 2018, *ApJ*, 853, 149
- Speagle, J. S., Steinhardt, C. L., Capak, P. L., & Silverman, J. D. 2014, *ApJS*, 214, 15
- Stefanon, M., Yan, H., Mobasher, B., et al. 2017, *ApJS*, 229, 32
- Tacconi, L. J., Genzel, R., Saintonge, A., et al. 2018, *ApJ*, 853, 179
- van der Wel, A., Franx, M., van Dokkum, P. G., et al. 2014, *ApJ*, 788, 28
- Wechsler, R. H., Bullock, J. S., Primack, J. R., Kravtsov, A. V., & Dekel, A. 2002, *ApJ*, 568, 52
- Whitaker, K. E., van Dokkum, P. G., Brammer, G., & Franx, M. 2012, *ApJ*, 754, L29
- Whitaker, K. E., Bezanson, R., van Dokkum, P. G., et al. 2017, *ApJ*, 838, 19
- Wuyts, S., Förster Schreiber, N. M., van der Wel, A., et al. 2011, *ApJ*, 742, 96
- Yang, X., Mo, H. J., van den Bosch, F. C., Zhang, Y., & Han, J. 2012, *ApJ*, 752, 41
- Zhao, D. H., Jing, Y. P., Mo, H. J., & Börner, G. 2009, *ApJ*, 707, 354