



Universiteit
Leiden
The Netherlands

VLT/SINFONI study of black hole growth in high-redshift radio-loud quasars from the CARLA survey

Marinello, M.; Overzier, R.A.; Röttgering, H.J.A.; Kurk, J.D.; Breuck, C. de; Vernet, J.; ... ; Saxena, A.

Citation

Marinello, M., Overzier, R. A., Röttgering, H. J. A., Kurk, J. D., Breuck, C. de, Vernet, J., ... Saxena, A. (2019). VLT/SINFONI study of black hole growth in high-redshift radio-loud quasars from the CARLA survey. *Monthly Notices Of The Royal Astronomical Society*, 492(2), 1991-2016. doi:10.1093/mnras/stz3333

Version: Accepted Manuscript

License: [Leiden University Non-exclusive license](#)

Downloaded from: <https://hdl.handle.net/1887/3134208>

Note: To cite this publication please use the final published version (if applicable).

VLT/SINFONI study of black hole growth in high redshift radio-loud quasars from the CARLA survey

M. Marinello^{1,2,3,*}, R.A. Overzier^{1,4}, H.J.A. Röttgering², J.D. Kurk⁵, C. De Breuck⁶, J. Vernet⁶, D. Wylezalek⁶, D. Stern⁷, K.J. Duncan², N. Hatch⁸, N. Kashikawa⁹, Y.-T. Lin¹⁰, R.S. Nemmen⁴, A. Saxena^{2,11}

¹ Observatório Nacional/MCTIC, Rua General José Cristino, 77, São Cristóvão, Rio de Janeiro, RJ 20921-400, Brazil

² Leiden Observatory, University of Leiden, PO Box 9513, 2300 RA Leiden, The Netherlands

³ Laboratório Nacional de Astrofísica, Rua Estados Unidos 154, Itajubá, MG, 37504-364, Brazil

⁴ Institute of Astronomy, Geophysics and Atmospheric Sciences, University of São Paulo, São Paulo, SP 05508-090, Brazil

⁵ Max-Planck-Institut für Extraterrestrische Physik, Giessenbachstrasse, D-85748 Garching, Germany

⁶ European Southern Observatory, Karl-Schwarzschild-Strasse 2, 85748 Garching bei München, Germany

⁷ Jet Propulsion Laboratory, California Institute of Technology, Mail Stop 169-221, Pasadena, CA 91109, USA

⁸ School of Physics and Astronomy, University of Nottingham, University Park, Nottingham NG7 2RD, United Kingdom

⁹ Department of Astronomy, School of Science, The University of Tokyo, 7-3-1 Hongo, Bunkyo-ku, Tokyo, 113-0033, Japan

¹⁰ Institute of Astronomy and Astrophysics, Academia Sinica, Taipei 10617, Taiwan

¹¹ INAF-Osservatorio Astronomico di Roma, Via Frascati 33, I-00040 Monteporzio (RM), Italy

Accepted XXX. Received YYY; in original form ZZZ

ABSTRACT

We present VLT/SINFONI observations of 35 quasars at $2.1 < z < 3.2$, the majority of which were selected from the Clusters Around Radio-Loud AGN (CARLA) survey. CARLA quasars have large C IV-based black hole masses ($M_{\text{BH}} > 10^9 M_{\odot}$) and powerful radio emission ($P_{500\text{MHz}} > 27.5 \text{ W Hz}^{-1}$). We estimate $\text{H}\alpha$ -based M_{BH} , finding a scatter of 0.35 dex compared to C IV. We evaluate several recipes for correcting C IV-based masses, which reduce the scatter to 0.24 dex. The radio power of the radio-loud quasars is at most weakly correlated with the interconnected quantities $\text{H}\alpha$ -width, L_{5100} and M_{BH} , suggesting that it is governed by different physical processes. However, we do find a strong inverse correlation between C IV blueshift and radio power linked to higher Eddington ratios and L_{5100} . Under standard assumptions, the BH growth time is longer than the cosmic age for many CARLA quasars, suggesting that they must have experienced more efficient growth in the past. If these BHs were growing from seeds since the epoch of reionization, it is possible that they grew at the Eddington limit like the quasars at $z \sim 6-7$, and then continued to grow at the reduced rates observed until $z \sim 2-3$. Finally, we study the relation between M_{BH} and environment, finding a weak positive correlation between M_{BH} and galaxy density measured by CARLA.

Key words: galaxies: active – galaxies: high-redshift – quasars: supermassive black holes

1 INTRODUCTION

The Clusters Around Radio-Loud Active Galactic Nuclei (AGN) project (CARLA) was a 400 h *Spitzer* snapshot survey that targeted 419 powerful radio-loud AGN (radio galaxies and quasars) with $L_{500 \text{ MHz}} > 27.5 \text{ W Hz}^{-1}$ in the redshift range $1.3 < z < 3.2$. The selection was done at a rest-frame frequency of 500 MHz estimated by interpolating between

the flux densities at 1.4 GHz from the NRAO VLA Sky Survey (NVSS) and 74 MHz from the VLA Low-frequency SKY Survey (VLSS), and ensured that the type 1 and 2 sources have comparable radio luminosities. The CARLA sample was further limited to contain equal fractions of type 1 and type 2 sources. The main goal of CARLA was to systematically investigate the environments of radio galaxies and quasars (Galametz et al. 2012; Wylezalek et al. 2013, 2014). By selecting galaxies on the basis of relatively red ([3.6] – [4.5]) colors, the CARLA survey successfully identified ex-

* E-mail: murilo.marinello@gmail.com

cesses of galaxies in the fields around many of the radio-loud AGN. The luminosity function of the galaxies in the overdensities derived by Wylezalek et al. (2014) showed that the overdense regions have the expected luminosity function of a (proto-)cluster at the redshift of the radio-loud AGN (RLAGN). In a pilot study of 48 radio galaxies, Galametz et al. (2012) showed that radio galaxies tend to lie, on average, in overdense regions consistent with clusters and proto-clusters of galaxies. In one of the densest fields identified in the CARLA study, Cooke et al. (2015) found that massive galaxies assembled their stars faster compared to the field. Recently, Noirot et al. (2016) spectroscopically confirmed two structures around powerful $z = 2$ radio galaxies from CARLA. Using *Hubble Space Telescope* (*HST*) slitless spectroscopy they found 8 star-forming members in the field of MRC 2036–254 and 8 star-forming galaxies (and 2 AGN) in the field of B3 0756+406. The spectroscopic follow-up of CARLA overdensities has since been expanded to yield 16 galaxy structures at $1.8 < z < 2.8$ in 20 of the densest CARLA fields (Noirot et al. 2018). Although a proper interpretation of the CARLA results must await more complete spectroscopic follow-up, the results are consistent with numerous previous studies that found strong evidence for overdense environments and (proto-)clusters associated with powerful radio galaxies at high redshift (see Overzier 2016, for a review).

The local $M_{\text{BH}} - \sigma_*$ relation combined with the galaxy stellar-to-halo mass relation suggests that there is a connection, albeit an indirect one, between the mass of Supermassive Black Holes (SMBHs) and their large-scale environments (Ferrarese & Merritt 2000; Gebhardt et al. 2000; Kormendy & Ho 2013). The CARLA sample offers a unique chance to investigate at what redshifts these relations may have been established. For instance, Nesvadba et al. (2011) analyzing a small sample of HzRGs with very massive BHs found an offset of 0.6 dex with respect to the $M_{\text{BH}} - \sigma_*$ relation. Moreover, the dense environments found around a significant fraction of the RLAGN targeted by CARLA could be particularly conducive to galaxy merging or halo gas accretion rates that are atypical for ordinary galaxies in the early universe. Although it is difficult to directly measure BH masses for the (type 2) radio galaxies in the CARLA sample, BH masses are available for the (type 1) radio-loud quasars in CARLA. Measurements based on the width of the C IV line from the Sloan Digital Sky Survey (SDSS) indicate that CARLA quasars have very massive BHs ($\log(M_{\text{BH}}/M_{\odot}) > 8.5$; Hatch et al. 2014). It will therefore be interesting to study whether the BH masses correlate with any other properties of the quasar hosts or their large-scale (cluster) environments provided by CARLA. Hatch et al. (2014) found a mild trend for more massive SMBHs to be located in denser environments. However, for CARLA sources located at high redshift, most of the BH mass estimates in that study were based on the C IV line, which is known to be problematic with large scatter and systematic offsets (Shen et al. 2008). Increasing the accuracy of the BH mass determinations will be a crucial first step if one wants to study any correlations involving the BH mass (Uchiyama et al. 2018). Therefore, an accurate measurement of the BH mass is necessary before we can properly assess possible correlations between the SMBHs and other properties of their hosts and environments.

Reverberation mapping (RM) is a powerful technique for probing the inner parsec of type-1 quasars (see Peterson 2014, for a review). Mapping the delay time between the variability of the continuum and the emission line response to this variation allows us to estimate fundamental parameters, such as the BH mass and the size of the broad line region (BLR) (Kaspi et al. 2000). However, RM observations are time-consuming and hence delay times can only be obtained for a relatively small sample of (nearby) sources. Alternatively, BH masses can be estimated from single epoch (SE) spectra under the assumption of virial motions of the BLR gas, $M_{\text{BH}} \propto R_{\text{BLR}} v_{\text{gas}}^2 / G$. The RM radius-luminosity ($R-L$) relation shows that the continuum luminosity at 5100 \AA (L_{5100}) can be used as a proxy for the R_{BLR} , while the full width at half maximum (FWHM) of a BLR line, usually $\text{H}\beta$, is related to the velocity dispersion of the emitting gas (Kaspi et al. 2000). This technique was extended to other lines, such as $\text{H}\alpha$ and Mg II in the rest-frame optical and ultraviolet (UV), respectively, and is widely used to determine BH masses from SE quasar spectra for quasars over a wide range of redshifts (Shen et al 2011).

Vestergaard & Peterson (2006) presented a RM analysis of nearby AGN observed in the UV and $\text{H}\beta$, and found an empirical relation that can be used to estimate BH masses based on C IV. With the increase of RM data this relation was later updated using a larger sample of 25 nearby AGN (Park et al. 2013). Using a similar approach, Wang et al. (2009) obtained an empirical relation between $\text{H}\beta$ and Mg II . The resulting $\text{Mg II} - M_{\text{BH}}$ calibration is considered to be very reliable, and has been applied to large samples of quasars (Shen et al 2011; Marziani et al. 2013). Another reliable line that is frequently used is $\text{H}\alpha$. Greene & Ho (2005) showed that the FWHM and luminosity of $\text{H}\alpha$ are good analogs of the FWHM($\text{H}\beta$) and L_{5100} .

Despite the success of SE BH mass determinations, the technique also has its limitations. Depending on the redshift of the quasars, rest-frame UV or optical lines may not be available. For instance, $\text{H}\alpha$ is available in optical spectra only at $z < 0.4$, while $\text{H}\beta$ can be detected only up to $z \sim 0.8$. At $0.8 < z < 2.2$ the BH mass can be estimated reliably using the Mg II line detected in optical spectra, while at $z > 2.2$ only the C IV line can be used. Furthermore, the scaling relation for SE BH mass determinations relies on the tightness of the $R-L$ relation, and has additional scatter when using lines other than $\text{H}\beta$. While results based on $\text{H}\alpha$, $\text{H}\beta$, and Mg II are usually consistent with those provided by RM results, and hence provide a good estimate for the BH mass, the C IV line is affected by several non-gravitational broadening effects making this line the least reliable of all (Shen et al. 2008). Therefore, in order to obtain more accurate BH masses, NIR observations are required. For instance, *K*-band spectroscopy is able to probe $\text{H}\alpha$ at $1.9 < z < 2.7$, $\text{H}\beta$ at $4.0 < z < 5.0$, and Mg II at $6.8 < z < 7.5$.

Several studies have attempted to improve the C IV-based estimates by determining empirical relations between the main observables used in the SE BH mass estimate, e.g., FWHM and continuum luminosity. For instance, Park et al. (2017) obtained RM for an updated sample of AGN to improve the C IV BH mass estimator using $\text{FWHM}(\text{C IV})$ and the luminosity at 1350 \AA (L_{1350}) as BLR size proxy. Runnoe et al. (2013) proposed a correction to the C IV BH mass estimator using the peak ratio between $\text{Si IV} + \text{O IV}]$ and C IV.

Assef et al. (2011) used a different approach, taking the ratio between L_{5100} and L_{1350} as an additional parameter in the SE BH mass determination. In yet another approach, Denney (2012) constructed a correction factor based on the ratio of the FWHM and σ of the line. Recently, Coatman et al. (2017) used NIR spectra for a large sample (230 quasars) in order to obtain a reliable relation between the M_{BH} estimated from $\text{H}\alpha$ (and $\text{H}\beta$) and that obtained from C IV. Despite all these attempts to improve the BH mass estimators based on C IV, the Balmer lines remain the most reliable for BH mass determination (e.g. Kaspi et al. 2000; Greene & Ho 2005; Vestergaard & Peterson 2006).

In this paper we use observations from the Spectrograph for INtegral Field Observations in the Near Infrared (SINFONI; Eisenhauer et al. 2003) on the Very Large Telescope (VLT) to probe the optical rest-frame spectra of 35 high redshift ($z > 2.2$) radio-loud quasars from the CARLA survey. We use $\text{H}\alpha$ to estimate the BH masses, and compare with the estimates from C IV and the various recipes that have been suggested to correct the C IV-based measurements for non-virial contributions. We use the new M_{BH} to study its relation to several other physical parameters of the CARLA quasars, such as accretion rate, luminosity, radio power, and growth time. Finally, we exploit the fact that we now have a large sample of quasars for which both accurate BH masses and a measurement of the local environment exists from the CARLA project in order to investigate a possible relation between M_{BH} and local environment.

This paper is organized as follows. In Section 2 we describe the selection of the sample targeted with SINFONI, the observations and the data reduction. In Section 3 we present a description of the techniques used for the BH mass determination. In Section 4 we present redshifts and BH masses estimated from $\text{H}\alpha$, and compare the results with values obtained using several methods from the literature that were designed to correct estimates based on C IV for non-gravitational effects. Using the updated BH masses we then estimate the Eddington ratio (L/L_{Edd}) and the BH growth time. In Section 5 we study the correlations between the M_{BH} and the luminosity, FWHM($\text{H}\alpha$), radio power, L/L_{Edd} , and growth time. Finally, we use the accurate measurements of M_{BH} based on $\text{H}\alpha$ to study the relation between the masses of the BHs and the Mpc-scale environment of their host galaxies using the galaxy surface density measurements from the CARLA survey. We give a summary of the results and concluding remarks in Section 6. In this paper, we adopt a Λ CDM cosmology with $H_0 = 70 \text{ km s}^{-1} \text{ Mpc}^{-1}$, $\Omega_M = 0.3$ and $\Omega_\Lambda = 0.7$. All magnitudes and colors are given in the AB photometric system.

2 SAMPLE AND OBSERVATIONS

2.1 Sample selection

Starting from the original full CARLA sample, a subset of 30 quasars was selected for follow-up observations. The redshift range of all but one of the targets is $z = 2.1 - 2.6$, and the $\text{H}\alpha$ line falls within the wavelength range 2.0–2.4 μm . One target (SDSS J094113+114532) has a higher redshift of $z = 3.19$, for which we observe $\text{H}\beta$ at 2.04 μm . In our analysis we assume that the FWHM of this line is roughly equivalent to that of

$\text{H}\alpha$ measured for the other objects (Vestergaard & Peterson 2006; Coatman et al. 2017). This subset covers the full range of parameter space of the CARLA sample (i.e., UV luminosities of $45.5 < \log(L_{\text{UV}}/[\text{erg s}^{-1}]) < 47.5$, $M_{\text{BH,CIV}} = 10^{8.5-10.5} M_\odot$, and radio power of $27.6 < \log(P_{500 \text{ MHz}}/[\text{W Hz}^{-1}]) < 29.2$). For completeness, we include in parts of our analysis 5 additional quasars that were selected from SDSS purely on the basis of their very high (C IV-based) BH masses, even though they are radio-quiet and thus not part of the CARLA sample. Furthermore, as the type of analysis performed in this paper is typically limited to just the radio-loud quasars in CARLA and not the radio galaxies, the latter occasionally show (in $\sim 20\%$ of the cases) broad line region $\text{H}\alpha$ lines (Nesvadba et al. 2011). We thus add to our analysis a small sample of six of such broad line radio galaxies from the sample of Nesvadba et al. (2011). Three of these radio galaxies are part of the CARLA sample, while the other three match the selection criteria of the CARLA survey but were not in the sample. Our final sample thus consists of 30 radio-loud quasars, 5 radio-quiet quasars and 6 broad line radio galaxies at $z \sim 2 - 3$.

Figure 1 shows the sources selected for this work compared to the full sample of ~ 200 CARLA quasars in redshift, radio power, UV luminosity and M_{BH} parameter space. The figure shows that the SINFONI subsample, while only $\sim 10\%$ the size of the full CARLA sample, is representative of the full sample in radio power, UV luminosity and BH mass and covers its central redshift range. The radio galaxies from Nesvadba et al. (2011) are concentrated near the highest radio luminosities and the highest M_{BH} .

A list of the targets and relevant observational information in our quasar sample is given in Table 1. Table 2 summarizes the main parameters determined for the six broad line radio galaxies from Nesvadba et al. (2011) that were used in our analysis. The available parameters include $\text{H}\alpha$ -based BH mass estimates and Eddington ratios that were determined in a similar fashion to the analysis performed on the CARLA quasars in this paper.

2.2 Observations

We used SINFONI at UT4 of the VLT at the European Southern Observatory (ESO) to observe a sample of 35 high-redshift quasars. The purpose of the project was to obtain NIR spectra probing the rest-frame optical region around $\text{H}\alpha$ in order to obtain more accurate BH masses for quasars selected from the CARLA survey and the SDSS. The data were taken over 6 years (2009–2015) as part of programs 095.B-0323(A), 094.B-0105(A), 093.B-0084(A), 092.B-0565(A), 091.B-0112(A), 090.B-0674(A), and 089.B-0433(A) (PI: Jaron Kurk). Except for 089.B-0433(A), all programs targeted radio-loud quasars from CARLA. The 089.B-0433(A) targets were selected from SDSS on the basis of their very high (C IV-based) BH masses but are not part of the CARLA sample (see Sect. 2.1).

We used the SINFONI K -band (1.95–2.45 μm) with the spatial scale of $125 \times 250 \text{ mas}$ (without adaptive optics). This setup delivers a spatial aperture of $8'' \times 8''$ with a spectral resolution of $\sim 400 \text{ km s}^{-1}$, allowing a robust sky subtraction. The observational strategy includes on-source dithering (ABBA pattern) in order to optimize the exposure time on the source and sky subtraction, and a telluric standard star

for telluric band removal and flux calibration. We took 14 to 16 individual exposures of 300s each, resulting in total integration times of 4200-4800 s.

2.3 Data reduction

The data reduction was performed using the SINFONI pipeline v2.9.0 (Modigliani et al. 2007) with the *Reflex* interface. The pipeline creates master calibration images and applies them to the observations, starting with a non-linearity map constructed from the flat-field frames. A master dark frame is created from the dark frames and the hot pixels are mapped. Individual flat-field images are combined into a master flat. Optical distortion and slitlet distances are computed, and the dispersion solution for the wavelength calibration is determined from arc spectra. Finally, individual exposures of the quasar and standard star are stacked. We performed an extra sky background removal step by determining a median stack of the pixels surrounding the source and combining them to create a residual sky map. This map was then subtracted from the source spectrum to remove background residuals remaining in the final data cube (these residuals can be seen in the form of spikes in the uncorrected spectrum).

We determined the spatial location of each quasar using a 2-dimensional Gaussian fit, and extracted the spectrum from a 5σ pixel aperture around this position¹. Because this program was designed to operate in poor weather conditions, no effort was made to obtain spatially resolved information from the data cubes. We modeled and subtracted Paschen lines from the telluric standard spectrum and the removal of telluric absorption was performed by dividing the quasar spectrum by a scaled telluric template derived from the standard star using the task *Telluric* in the IRAF *onedspec* package. Finally, the spectrum was flux calibrated using the observed standard star. For quasars with photometry in the *K*-band available from UKIDSS or 2MASS, we scaled the final spectrum to have the same flux as expected based on the photometry. For the remaining 7 quasars for which no previous *K*-band photometry exists, we estimated the absolute scale of the continuum using a template fitting technique described in Section 3.3. Because we are interested only in the properties of the emission lines (i.e., flux and FWHM), we fitted and subtracted the underlying continuum near $H\alpha$. We modeled the continuum using a power law, fitting the regions free of emission lines between rest-frame 6250–6400Å and 6600–6750Å (redshifted using the redshifts from the SDSS catalog). The resulting final spectra around $H\alpha$ are shown in Figs. A1, A2 and A3 of the Appendix.

3 ANALYSIS

3.1 $H\alpha$ Line Fitting

$H\alpha$ is a recombination line that can be produced both in the BLR and in the NLR (e.g., see Stern & Laor 2013). Several authors have claimed the existence of multiple broad components of this line (e.g., Sulentic & Marziani 1999),

¹ The median change in $\text{FWHM}(H\alpha)$ is about 1% when using a more conservative aperture of 3σ .

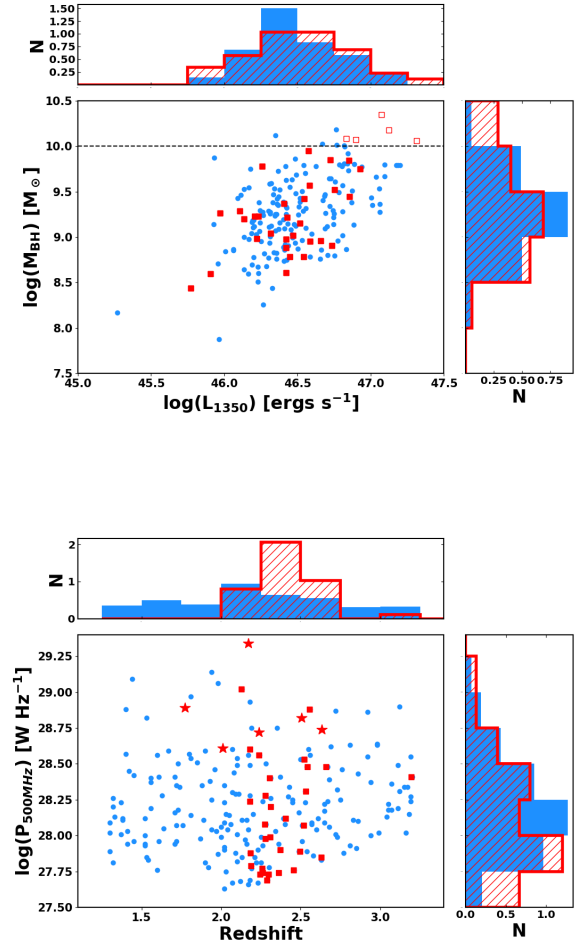


Figure 1. Sample parameters distribution showing redshift versus radio power (bottom panel) and UV luminosity versus C IV-based BH mass (top panel). The full CARLA quasar sample is indicated with blue circles. CARLA sources targeted with SINFONI are indicated with filled red squares. The 5 SDSS radio-quiet quasars that are not part of CARLA are indicated with the open red squares. The 6 broad-line radio galaxies from CARLA with BH mass measurements from Nesvadba et al. (2011) are indicated by the red stars in the bottom panel (C IV-based BH masses are not available for this sample). The right and top histograms show that our SINFONI targets (red hatched histogram) form a fair subsample of the full CARLA sample (blue shaded histogram) in radio power, UV luminosity and BH mass, even though the SINFONI sample covers a more limited range in redshift.

suggesting that there are different emitting regions inside the BLR producing the observed emission. Surrounding $H\alpha$ are the lines of the $[N\text{II}]$ doublet emitted by the NLR. Because forbidden lines in powerful radio-loud AGN can be broadened by shocks to velocities as high as 1500 km s^{-1} (De Breuck et al. 2001), we include a narrow component with $\text{FWHM}_{\text{narrow}} < 1500\text{ km s}^{-1}$ and force the broad component to have $\text{FWHM}_{\text{broad}} > 1500\text{ km s}^{-1}$. Taking into account these possible components, we fit $H\alpha$ by solving for the parameters of a multi-Gaussian fitting function that minimizes χ^2 .

Table 1. Sample Information.

SDSS Name	R.A. (J2000)	Dec. (J2000)	z^a	T_{exp} (s)	$\log(P_{500\text{ MHz}})$ (W Hz $^{-1}$)	u' (mag)	g' (mag)	r' (mag)	i' (mag)	z' (mag)	J (mag)	H (mag)	K (mag)
Radio-loud quasars from CARLA													
J012514-001828	01:25:17.1	-00:18:29	2.279054	4200	28.28	19.06	18.31	18.36	18.27	18.04	16.94	16.72	15.91
J082707+105224	08:27:06.4	10:52:24	2.278000	4800	27.98	19.75	18.94	18.90	18.71	18.39	–	–	–
J090444+233354	09:04:44.3	23:33:54	2.258323	4200	27.77	18.06	17.40	17.30	17.00	16.73	15.76	15.25	14.21
J092035+002330	09:20:35.8	00:23:31	2.493972	4800	27.89	19.30	18.51	18.48	18.46	18.18	17.22	16.74	15.94
J094113+114532	09:41:13.5	11:45:32	3.193793	4800	28.41	21.39	19.41	19.27	19.33	19.35	18.39	18.12	17.41
J102429-005255	10:24:29.5	-00:52:55	2.556504	4200	28.88	19.01	18.33	18.28	18.23	17.93	16.92	16.37	15.59
J104257+074850	10:42:57.6	07:48:51	2.660536	4800	28.48	18.81	17.76	17.50	17.32	17.17	18.18	17.47	16.61
J110344+023209	11:03:44.5	02:32:10	2.517125	4200	28.07	19.35	18.53	18.44	18.33	18.01	16.98	16.37	15.49
J111857+123441	11:18:57.3	12:34:42	2.125651	4800	29.02	18.87	18.50	18.49	18.33	18.13	17.59	16.98	16.10
J112338+052038	11:23:38.1	05:20:38	2.183412	4800	27.88	19.65	19.20	19.09	18.77	18.50	17.66	17.04	16.09
J115901+065619	11:59:01.7	06:56:19	2.186956	4800	27.79	20.49	19.75	19.29	18.93	18.60	17.66	16.95	15.97
J120301+063441	12:03:01.0	06:34:42	2.180930	4800	28.24	21.15	19.74	18.91	18.39	18.04	16.99	16.42	15.51
J121255+245332	12:12:55.8	24:53:32	2.373100	4800	27.90	19.53	19.10	19.02	19.02	18.84	–	–	–
J121911-004345	12:19:11.2	-00:43:46	2.296210	4200	27.73	18.27	17.89	17.94	17.98	17.90	17.13	16.68	16.08
J122836+101841	12:28:36.9	10:18:42	2.303086	4800	28.40	19.43	18.79	18.72	18.58	18.31	17.24	16.55	15.78
J133932-031706	13:39:32.6	-03:17:06	2.311469	4200	28.20	19.19	18.66	18.62	18.52	18.30	17.28	16.69	15.93
J140445-013021	14:04:45.9	-01:30:22	2.520401	4200	28.53	18.98	18.29	18.19	18.10	17.91	16.91	16.36	15.45
J141906+055501	14:19:06.8	05:55:02	2.287456	4200	27.69	19.78	19.21	19.18	19.12	18.89	18.33	17.93	16.96
J143331+190711	14:33:31.9	19:07:12	2.360114	4200	27.74	19.74	18.85	18.84	18.72	18.45	–	–	–
J145301+103617	14:53:01.5	10:36:17	2.275276	4200	28.08	19.97	19.30	19.29	19.11	18.77	17.89	17.38	16.41
J151508+213345	15:15:08.6	21:33:45	2.245700	4800	27.73	19.30	18.48	18.32	18.14	17.85	16.81	16.21	15.28
J153124+075431	15:31:24.1	07:54:31	2.455450	4200	27.76	19.82	19.21	19.10	19.06	19.10	18.37	17.77	17.37
J153727+231826	15:37:27.7	23:18:26	2.259551	4800	27.74	19.83	19.38	19.02	18.79	18.59	–	–	–
J153925+160400	15:39:25.1	16:04:00	2.542400	4200	28.48	20.33	19.48	19.23	19.17	19.01	–	–	–
J154459+040746	15:44:59.4	04:07:46	2.182000	4800	28.60	18.75	18.33	18.26	18.04	17.81	17.17	16.53	15.73
J160016+183830	16:00:17.0	18:38:30	2.404757	4200	28.12	19.68	18.85	18.77	18.60	18.28	–	–	–
J160154+135710	16:01:54.5	13:57:11	2.237000	4800	28.56	19.11	18.49	18.38	18.18	17.96	17.01	16.20	15.64
J160212+241010	16:02:12.6	24:10:11	2.530514	4200	28.31	19.66	18.79	18.71	18.58	18.22	17.16	16.54	15.70
J230011-102144	23:00:11.7	-10:21:44	2.306749	4200	27.99	18.77	18.35	18.27	18.30	18.16	–	–	–
J231607+010012	23:16:07.2	01:00:13	2.629261	4200	27.85	18.85	18.32	18.13	18.05	17.93	17.15	16.22	16.03
Non-CARLA quasars having $M_{BH}(C IV) > 10^{10} M_{\odot}$													
J005814+011530	00:58:14.3	01:15:30	2.519759	4200	–	18.71	17.86	17.66	17.66	17.53	16.64	16.11	15.45
J081014+204021	08:10:14.6	20:40:21	2.506104	4200	–	17.79	17.31	17.28	17.27	17.11	16.16	15.67	14.86
J115301+215117	11:53:01.6	21:51:18	2.367374	4200	–	17.21	16.67	16.69	16.63	16.43	15.54	15.03	14.26
J130331+162146	13:03:31.3	16:21:47	2.276900	4200	–	18.80	18.21	18.05	18.01	17.84	17.05	16.44	15.61
J210831-063022	21:08:31.5	-06:30:23	2.348147	4800	–	17.90	17.38	17.20	17.16	17.03	16.42	15.77	15.01

^a Redshifts are from SDSS.

Table 2. Broad-line radio galaxies from Nesvadba et al. (2011).

SDSS Name	R.A. (J2000)	Dec. (J2000)	z^a	$\log(P_{radio})$ (W Hz $^{-1}$)	Flux ($H\alpha$) (10^{-15} erg s $^{-1}$ cm $^{-2}$)	FWHM ($H\alpha$) (km s $^{-1}$)	$\log(M_{BH}/M_{\odot})$ ($H\alpha$)	L/L_{Edd}	$t_{growth}/t(z)$
MRC0156-252	01:58:33.5	-24:59:32	2.01143	28.61 [†]	17.5	12436	10.0	0.05	3.82
MRC1017-220	10:19:49.0	-22:19:58	1.77356	28.89 [‡]	5.3	12006	9.70	0.02	6.90
TXS1113-178	11:16:14.5	-18:06:22	2.23851	28.72 [†]	14.0	11063	9.95	0.05	3.62
MRC1138-262	11:40:48.3	-26:29:09	2.17201	29.34 [†]	19.0	14900	10.3	0.02	9.28
MRC1558-003	16:01:17.3	-00:28:46	2.50488	28.82 [‡]	8.3	12425	10.0	0.04	5.17
MRC2025-218	20:27:59.0	-21:40:57	2.63094	28.74 [‡]	5.5	8023.6	9.48	0.08	2.46

^a Redshifts based on $H\alpha$ taken from Nesvadba et al. (2011).

[†] Radio luminosity at 325 MHz taken from De Breuck et al. (2000).

[‡] Radio luminosity at 500 MHz taken from Wylezalek et al. (2013).

We used one Gaussian for each of the lines of the [N II] doublet, up to two broad Gaussians for the BLR component of $H\alpha$, and one Gaussian for the narrow component of $H\alpha$. However, in none of our quasars did we detect [N II] emission with a peak flux larger than $3\times$ the rms noise measured in the line-free continuum. Since no [N II] detections were found, we fitted the whole line complex with just one Gaussian for the NLR $H\alpha$ component and (at most) two Gaussians for the BLR $H\alpha$ component. We selected just one broad Gaussian function when one of the two broad components was below 3σ of the continuum. Again, if the narrow component found was weaker than the 3σ threshold we ig-

nored this component. We found a narrow component in 8 out of the 35 sources in our sample having a relevant contribution to $H\alpha$. From the best fit we estimated the FWHM, flux and velocity dispersion (second moment of the line) of the total broad component of $H\alpha$, i.e., the summed broad components of the line (hereafter broad component of $H\alpha$) (Peterson et al. 2004). This approach is similar to Shen et al (2011), and reproduces well the observed line profiles of $H\alpha$ in all our quasars. The errors on the parameters were obtained by fitting 10,000 monte carlo realizations of the data. The results for the summed broad components of $H\alpha$ are summarized in Columns 2-5 of Table 3. An example of the

best fit profiles can be seen in the top panels of Figure 2. The results of these fits are shown in Figs. A1, A2 and A3 of the Appendix.

In order to obtain accurate measurements of the blueshift of C IV (see Section 3.2), we need to estimate accurately the systemic redshift of the quasars. Coatman et al. (2016) show that redshifts can be reliably obtained from the centroid of H α defined as the intersection point that separates half of the flux of the line. Using the results from the summed broad components of the H α fits we estimated the systemic redshifts for each source (Column 5 in Table 3).

3.2 C IV Line Fitting

In order to measure the properties of the C IV line, we first remove the underlying continuum. We fit a power law function to the line free regions at rest-frame 1400–1450Å and 1700–1705Å, corrected for the Doppler shift using the redshifts estimated from H α in the previous section (similar to Shen et al 2011). We found a median value for the power law index of -1.2, which is consistent with the mean value for a composite quasar spectrum from SDSS/DR3 (Vanden Berk et al. 2001). We subtracted the power law from each SDSS spectrum, resulting in a pure emission line spectrum around C IV. Different from H α , the profile of C IV exhibits a much more complex structure. Several physical phenomena such as winds and outflows can cause non-gravitational broadening of this line resulting in an often asymmetrical profile (e.g., Denney 2012; Coatman et al. 2016). To model this line we used a similar approach as Shen et al (2011), who considered a line profile composed of three Gaussians. While other authors have used a 6th-order Gauss-Hermite function to model C IV, these approaches are consistent within 10% (Assef et al. 2011; Coatman et al. 2016).

We model C IV with three Gaussians which provide a good fit among the variety of the line profiles observed in the sample, including blue asymmetries and absorption features. To fit C IV we perform two rounds of fitting. First we apply a 20-pixel boxcar filter to produce a smoothed spectrum. An initial fit is performed on the smoothed spectrum and any regions above and below 3σ (i.e., strong noise spikes and absorption features) are masked. This mask was applied to the original spectrum and the final fit was performed.

The bottom row of panels of Figure 2 shows examples of the best fit profiles, and all fits are shown in Figs. A4, A5 and A6 of the Appendix. The flux and FWHM were estimated from the total fit of the profile. The C IV blueshift, defined as $BS_{CIV} = (\lambda_c - 1549.48)/c$, relative to the measured line centroid², λ_c , was also estimated. A positive value of BS_{CIV} means that the centroid of C IV is shifted blueward of the expected rest-frame wavelength of the line as determined from H α . The best fit model parameters including the blueshift are summarized in Table 3. Figure 3 shows a comparison between the FWHM determined from H α and C IV. The large scatter observed between the two values suggests that mechanisms, other than gravitational broadening, likely contribute to the C IV line profile.

² The line centroid, λ_c , is the wavelength that separates half of the flux of the line

3.3 Monochromatic Luminosity

In this work, our goal is to estimate the BH mass using H α and compare it with the estimates based on C IV using the various methods that have been proposed to correct C IV-based measurements for non-gravitational contributions. The last piece of information needed for these BH mass determinations is the rest-frame optical continuum luminosity, which is a proxy for the radius of the line emitting region in the BLR through the $R-L$ relation (Kaspi et al. 2005; Bentz et al. 2006). The C IV-based BH mass relies on the FWHM of C IV and the continuum luminosity at 1350 Å (L_{1350}). Deriving L_{1350} is straightforward if the spectrum is well flux-calibrated. We calculate L_{1350} the monochromatic flux at 1350 Å, using the power law obtained in the previous section (Column 3 of Table 4).

Similarly, the luminosity at 5100 Å (L_{5100}) is necessary for the BH mass estimate using the H α (or H β) line. Since our spectra do not cover the region around 5100 Å we used a similar approach as Hewett et al. (2006), fitting a model spectral energy distribution (SED) simultaneously to the spectrum and the available photometric data. This is an accurate method for estimating the shape of the SED and successfully reproduces the observed magnitudes of quasars with a precision better than 0.1 mag. L_{5100} is calculated from the best fit SED model. This method is the same as used by Coatman et al. (2016) to obtain the continuum luminosities for more than 200 high redshift quasars. We constructed a simple parametric quasar SED template consisting of a reddened power-law and a Balmer continuum. We used the reddening law for quasars derived in Zafar et al. (2015). The Balmer continuum was forced to have an integrated flux of 10% of the power-law in the region blueward of the Balmer edge (3646 Å) (as in Hewett et al. 2006). Emission lines were added to the template using the values listed for the SDSS composite from Vanden Berk et al. (2001), which includes all broad and narrow lines and the Fe II pseudo-continuum. Each of the parameters were varied, and the resulting templates were used to compute synthetic magnitudes. The best fit model was found by comparing the modeled g, r, i, z, J, H, K magnitudes to those given by the SDSS (DR7 Schneider et al. 2010) and UKIDSS surveys using a χ^2 minimization routine. We excluded the u filter from the fitting process because it is not sufficiently covered by the SDSS spectrum. Finally, the luminosity at 5100 Å was measured from the continuum component of the best fit SED. Overall, this method accurately reproduced the observed fluxes to $\sigma < 0.1$ mag per band. However, for a couple of quasars the H -magnitude was above this threshold (but still lower than 0.15 mag), and we note that a 0.15 mag error in magnitude translates to a 12% flux error.

For seven quasars, NIR photometry was not available. For these sources we therefore fit the SED template only to the SDSS optical magnitudes. In order to test if these results still reliably predict the luminosity at 5100 Å, we performed a test by fitting all quasars for which J, H, K data does exist first with and then without the NIR magnitudes. The results are shown in Figure 4. The difference in the fluxes at 5100 Å determined for these objects using the two methods has a standard deviation of 18%. We used this value as the typical error for the seven sources for which NIR photometry is not available.

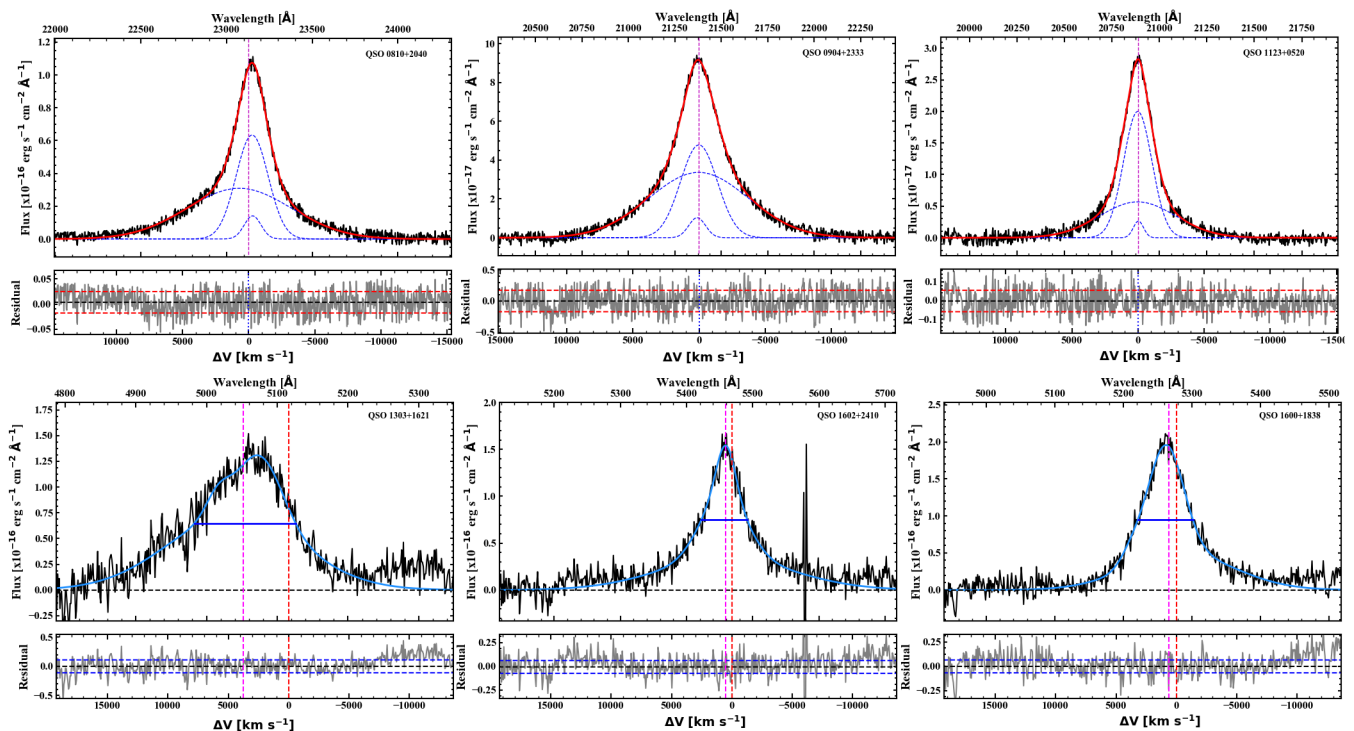


Figure 2. Examples of the line fitting routine applied to the $H\alpha$ (top row of panels) and $C\text{IV}$ line profiles (bottom row of panels). The spectra and the residuals of the subtracted best-fit model are shown in black and gray, respectively. The bold red lines in the top panels show the best-fit, the dashed blue lines show the individual components of the model, and the vertical dashed magenta line shows the centroid of $H\alpha$. The bottom panels show examples of $C\text{IV}$ in the SDSS spectra of the same quasars. The blue lines in the lower panels show the best-fit model, and the red and magenta vertical dashed lines show the central wavelength of $C\text{IV}\lambda 1549$ as expected based on $H\alpha$ and the actual centroid of the $C\text{IV}$ profile, respectively. The horizontal blue line shows the FWHM of $C\text{IV}$. Dashed red and blue horizontal lines in the rms panels show the $1\text{-}\sigma$ level for $H\alpha$ and $C\text{IV}$, respectively.

Figure 5 shows some examples of the SED fits obtained. The values found for L_{5100} are given in Column 4 of Table 4. Coatman et al. (2017) presented a compilation of more than 230 quasars observed in the NIR with the goal of rehabilitating the $C\text{IV}$ -based method for estimating BH masses. Their sample is composed of quasars at $1.5 < z < 4$, with $C\text{IV}$ -blueshifts up to 5000 km s^{-1} , luminosities of $45.5 < \log(L_{5100}) < 48.0$, and $8.5 < \log(M_{\text{BH}}) < 10.5$. The main difference between the CARLA sample and the Coatman et al. (2017) sample is that the latter is dominated ($\sim 90\%$) by radio-quiet sources, whereas our sample is predominantly radio-loud (86% of the sources). Comparison between these two samples could thus provide powerful insight into the link between radio activity in quasars and other observable quantities. We plot the values obtained for the rest-frame optical and UV luminosities in Figure 6 together with the luminosities of all quasars in the Coatman et al. (2017) sample. Our values are consistent with their results and with the slope ($\alpha = 1.044$) obtained by Shen et al (2011) for the SDSS sample.

4 RESULTS

4.1 Black Hole Masses

Single epoch BH masses can be determined under the assumption of virial motions using two parameters, the veloc-

ity of the gas and its distance from the BH. The strong $R-L$ relation between the continuum luminosity at 5100 \AA and the BLR radius obtained from RM allows us to use L_{5100} as a measure of the BLR radius, while the FWHM of the Balmer lines serve as a proxy for the gas velocity. Both parameters were obtained in Section 3, and we can thus estimate the BH mass using the FWHM of $H\alpha$ and L_{5100} . The general equation to estimate the BH mass takes the form of equation 1 (Shen et al 2011):

$$\log(M_{\text{BH}}/M_{\odot}) = a + b \times \log\left(\frac{\text{FWHM}}{10^3\text{ km s}^{-1}}\right) + c \times \log\left(\frac{\lambda L_{\lambda}}{10^{42}\text{ erg s}^{-1}}\right). \quad (1)$$

Shen et al (2011) presented BH masses for the entire SDSS quasar sample using the equations derived by Vestergaard & Peterson (2006) for $C\text{IV}$ (at high redshift) and $H\alpha$ (at low redshift). Since the CARLA quasars were selected from the SDSS as well, the BH masses of our quasars were previously determined based on $C\text{IV}$. Using the results from Section 3 we have used the $H\alpha$ line to obtain new BH masses. The new measurements should be relatively free from the type of uncertainties that affect determinations based on $C\text{IV}$. We use Equation 1 with the parameters $(a, b, c) = (6.91 \pm 0.02, 2.0, 0.50)$ as in Vestergaard & Peterson (2006), by converting the FWHM of $H\alpha$ to the FWHM of $H\beta$ using the empirical relation presented by Coatman

Table 3. Results of the H α and C IV line fitting.

SDSS Name	H α					C IV				
	Flux ^a	FWHM (km s ⁻¹)	σ_l (km s ⁻¹)	z	S/N	Flux ^a	FWHM (km s ⁻¹)	σ_l (km s ⁻¹)	Blueshift (km s ⁻¹)	S/N
Radio-loud quasars from CARLA										
J012514-001828	8.24±0.16	4433±87	3126±61	2.279	50	37.08±1.36	3450.8±142	4278±157	-0.39	27
J082707+105224	8.97±0.29	4768±154	3046±98	2.284	30	17.97±0.69	4965.1±801	4450±170	235.75	26
J090444+233354	35.68±0.66	4569±84	3151±58	2.257	53	53.24±1.69	5647.8±223	3736±118	464.15	31
J092035+002330	1.31±0.10	8113±638	3430±270	2.489	12	24.59±1.39	6484.7±280	4476±253	189.49	17
J094113+114532 [†]	0.96±0.09	6232±609	2633±257	3.193	10	11.69±0.53	2621.9±132	3704±168	-57.58	22
J102429-005255	3.92±0.13	5630±197	2377±83	2.556	28	28.65±0.95	2757.2±66	3614±120	221.03	30
J104257+074850	3.11±0.27	6823±596	2822±246	2.659	11	9.15±0.73	4136.9±369	4241±339	147.42	12
J110344+023209	6.04±0.26	5032±217	3344±144	2.512	23	21.81±1.25	5935.3±800	4080±234	-0.53	17
J111857+123441	36.77±2.38	5978±388	2522±163	2.126	15	30.74±0.92	3310.8±154	4034±120	30.23	33
J112338+052038	6.77±0.12	2989±56	2061±38	2.182	52	13.48±0.69	4684.8±207	3565±184	519.25	19
J115901+065619	9.73±0.31	5906±192	2492±81	2.183	30	7.71±0.97	8750.9±255	3643±461	2819.44	8
J120301+063441	14.86±0.36	4120±101	2724±67	2.179	40	8.47±0.61	2482.4±242	3200±233	-37.95	14
J121255+245332	2.69±0.23	4931±434	2081±183	2.405	11	5.510±0.94	5620.9±722	3861±664	2164.23	6
J121911-004345	12.78±0.23	3590±67	2258±42	2.304	53	13.56±0.84	4323.5±182	3689±231	2064.21	15
J122836+101841	6.23±0.20	4310±141	1965±64	2.302	30	12.12±0.80	3793.1±614	3500±232	-100.02	15
J133932-031706	7.62±0.25	5471±182	3515±117	2.310	29	16.59±1.27	4691.1±1403	4765±364	-79.39	13
J140445-013021	22.85±1.11	4262±208	3675±179	2.517	20	29.46±1.02	2552.3±2151	4534±157	168.99	29
J141906+055501	3.20±0.19	7656±456	3790±225	2.294	16	9.73±0.84	5507.6±336	4103±356	187.76	12
J143331+190711	7.07±0.35	5728±289	2416±122	2.358	19	23.10±0.76	3518.4±321	3884±129	-133.65	30
J145301+065617	6.49±0.23	4508±165	3386±124	2.276	27	10.19±0.90	5592.1±497	3833±341	-273.64	11
J151508+213345	13.08±0.55	6372±269	2693±113	2.248	23	28.56±0.95	3171.5±180	4812±160	294.71	30
J153124+075431	1.13±0.06	3896±205	1643±86	2.473	18	6.46±0.40	3369.8±571	3633±229	1083.40	16
J153727+231826	4.35±0.28	6717±446	2838±188	2.265	15	2.61±0.88	8007.8±2386	4237±1431	1766.47	3
J153925+160400	1.75±0.11	3215±203	1349±85	2.550	15	5.00±0.72	4743.1±751	4429±641	1227.27	7
J154459+040746	26.55±0.61	5480±126	2314±53	2.185	43	19.57±0.84	2275.8±249	3655±158	317.50	23
J160016+183830	20.94±2.37	4205±476	1778±201	2.405	8	19.95±0.67	4543.5±270	3322±111	547.80	30
J160154+135710	11.03±0.24	4942±108	3296±72	2.237	45	17.34±0.71	3312.5±186	3500±144	-119.23	24
J160212+241010	19.79±0.98	4796±238	2005±99	2.529	20	16.06±0.68	3789.9±194	4133±176	431.34	23
J230011-102144	4.05±0.10	4313±113	2749±72	2.318	38	8.92±1.00	5145.6±683	3919±443	1315.68	8
J231607+010012	5.77±0.30	3739±194	2472±128	2.649	19	9.31±1.32	6840.3±502	4499±640	2797.38	7
Non-CARLA quasars having $M_{\text{BH}}(\text{C IV}) > 10^{10} M_{\odot}$										
J005814+011530	9.08±0.35	3391±132	2797±109	2.528	25	17.50±1.97	8050.9±452	4303±486	3218.35	9
J081014+204021	40.27±0.90	3776±84	3222±72	2.524	44	25.51±1.93	8328.7±807	4281±325	3245.79	13
J115301+215117	20.58±0.78	6108±231	2573±97	2.372	26	76.71±3.97	6708.6±206	4700±243	2568.54	19
J130331+162146	2.94±0.17	4067±245	1703±102	2.301	16	22.74±1.91	8390.7±348	4773±402	3640.50	12
J210831-063022	15.07±0.37	4672±117	3003±75	2.376	39	20.27±1.46	10511.0±519	4584±331	5312.81	14

^a Fluxes are given in units of 10^{-15} erg s⁻¹ cm⁻².[†] Due to the high redshift of this source, the measurements were made using H β

et al. (2017). Table 6 summarizes the values obtained. We compare these values with those found for C IV in Figure 7. The left panel shows that there is a large scatter between the two estimates, as expected based on previous studies (e.g., Coatman et al. 2017). Only considering the radio-loud quasars from CARLA (filled red squares), the C IV-based M_{BH} is systematically lower by 0.23 dex on average, with a scatter of 0.35 dex. Despite the H α -based masses being somewhat higher than those estimated from C IV, it leads to fewer catastrophic outliers. This can be easily seen from the fact that of the 5 non-CARLA radio-quiet quasars that had C IV-based masses in excess of $10^{10} M_{\odot}$ and that were observed with SINFONI, for only 1 object H α gives a consistent answer (open symbols in Figure 7). The right-hand panel of Figure 7 shows the distribution in M_{BH} estimated from C IV and H α , indicating again that although the H α -based method leads to masses that are on average somewhat higher, it leads to fewer masses at the very high mass end of $\sim 10^{10} M_{\odot}$.

Because of the ease of accessibility of the C IV line in optical spectra out to very high redshift, its robustness for SE BH mass determinations has been discussed by many authors, leading to novel attempts for providing reliable M_{BH} -calibrations that are based on this line. With the idea of

finding the optimal method for determining the BH masses of the radio-loud quasar population targeted by CARLA, we will test several empirical calibrations that have been proposed for improving the M_{BH} estimate using C IV by comparing them with our results obtained using H α .

Denney (2012) used a combination of RM data with SE BH mass estimates based on C IV in order to investigate any offsets. Their results showed that in several cases C IV has a non-reverberating component (likely related to outflows) that varies from source to source. Comparing with the M_{BH} estimated from H β they showed that the scatter between the estimates based on these lines correlates with the shape of C IV. They suggested a correction for M_{BH} using C IV based on the ratio between the FWHM and dispersion (σ_{CIV}). We compare the M_{BH} corrected by this method with the ones obtained from H α . The top-left panel of Figure 8 shows the results. The Denney (2012) method significantly reduces the scatter between H α and the (corrected) C IV from 0.35 to 0.24 dex. Also, the average value for C IV is now nearly the same as that of H α , with a -0.06 dex offset. We note that Denney (2012) developed their method using relatively low luminosity, radio-quiet sources with $\log(M_{\text{BH}}/M_{\odot})$ between 7 and 9. Our results obtained here indicate that the

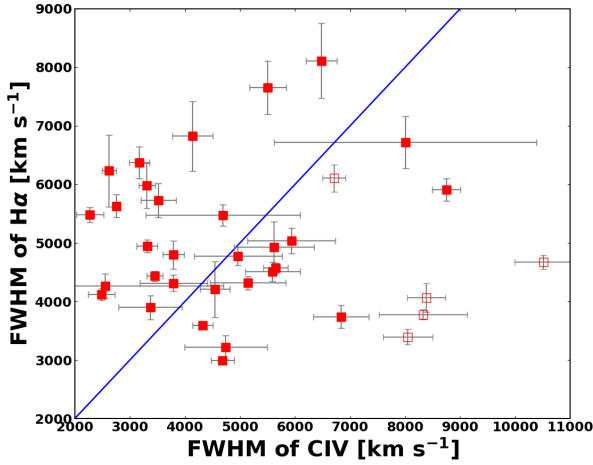


Figure 3. FWHM of C IV and H α . The large scatter observed in the plot suggests a poor correlation between the width of these two lines. Filled squares are the CARLA sources in our sample. Open squares show the 5 radio-quiet SDSS quasars in our sample that are not part of the CARLA survey. The blue line shows the unitary line. The large scatter suggests that different broadening mechanisms, other than gravitational broadening, may be acting on C IV.

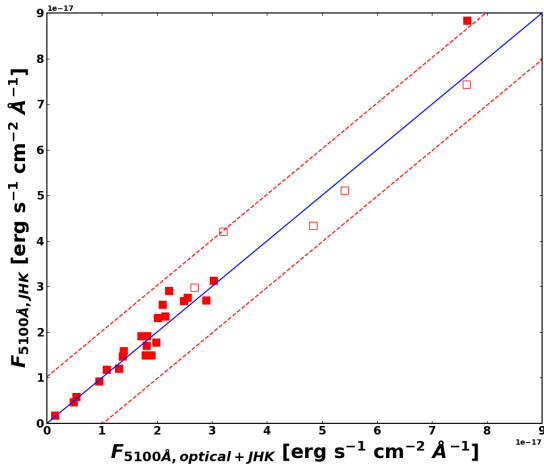


Figure 4. Measured flux densities at 5100 Å from the SED fitting performed in Section 3.3. The abscissa shows the values obtained from fits using the full optical+NIR photometry, while the ordinate shows the results without the J, H, K photometry. The values are consistent within a standard deviation of 18% (red dashed lines). The blue line is the unitary line. CARLA quasars are indicated with filled red squares. The 5 radio-quiet SDSS quasars with the open red squares. See the text of Section 3.3 for details.

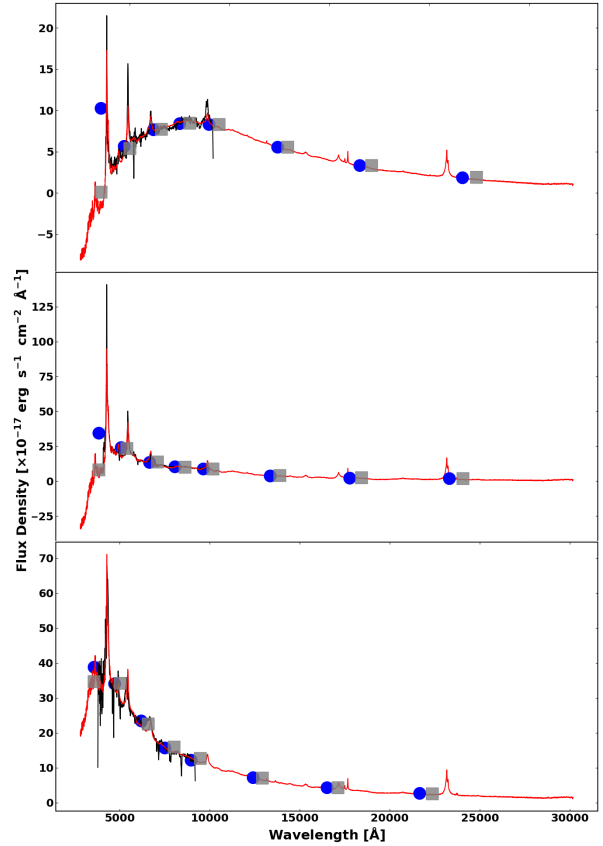


Figure 5. Examples of the SED template fit to optical spectra and the observed magnitudes. The blue and green dots, respectively, show the observed and modeled u, g, r, i, z, J, H, K magnitudes. The best-fit template and the observed SDSS spectra are shown in red and black, respectively. See the text of Section 3.3 for details.

method extends to luminous radio-loud quasars with higher BH masses as well.

With the same goal, Runnoe et al. (2013) suggested that discrepancies between M_{BH} from C IV and H β are mainly due to the fact that C IV often presents a non-virial component. Using a sample of 85 bright low-to-intermediate redshift quasars, they found that the difference in widths of C IV and H β correlates with the peak flux ratio of Si IV+O IV] λ 1400 and C IV as the former line complex does not vary with the FWHM of C IV. Using this parameter (Peak Ratio λ 1400 in Table 4) they derived an empirical correction to the virial equation that reduces the scatter from 0.43 to 0.33 dex in their sample. The top-right panel of Figure 8 shows how the Runnoe et al. (2013) correction method compares with our estimates based on H α . This method also reduces the scatter between the M_{BH} estimated from H α and C IV, but with a tendency to underestimate the true (H α) M_{BH} . We find that the average BH mass has an offset of -0.24 dex with a scatter of 0.27 dex. Note that the scatter is very similar to that obtained using the Denney (2012) method, but with a larger negative systematic offset. Furthermore, this method depends strongly on a line that is significantly weaker than C IV. This means that in low S/N spectra the correction factor can become difficult to measure.

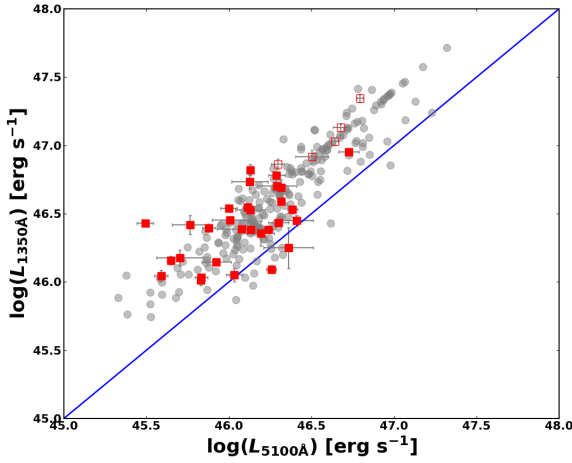


Figure 6. Rest-frame optical (L_{5100}) versus ultraviolet (L_{1350}) luminosities. The red filled squares show the values for L_{5100} and L_{1350} for the SINFONI targets studied in this paper that belong to the CARLA sample. Red open squares show the 5 radio-quiet SDSS quasars that are not in CARLA. The sources from Coatman et al. (2017) are shown in grey circles. See the text of Section 3.3 for details.

Coatman et al. (2017) presented another possible solution to improve C IV-based BH mass estimators. Analyzing a sample of 230 quasars, they found a strong correlation between the blueshift of C IV and the ratio of the FWHMs of C IV and $H\alpha$. Their results show that in order to estimate the BH mass using the FWHM of C IV it is necessary to first correct its width by a parameter that is a function of the C IV blueshift. We estimated the BH masses using the Coatman et al. (2017) method for our sample. The bottom-left panel of Figure 8 shows the corrected BH masses compared with our measurements based on $H\alpha$. The results are comparable to those obtained with the Denney (2012) method. The scatter between the BH masses from $H\alpha$ and C IV are reduced to 0.28 dex with a small systematic offset of -0.04 .

Finally, Park et al. (2017) presented new RM results based on a larger sample than that presented by Park et al. (2013). By using a sample of 35 high S/N AGN they derived a new equation for SE BH masses using C IV. The main difference between their results and previous determinations of SE C IV-based BH mass estimates is the value of the exponent in the luminosity term of the equation. Their method reduces the contribution of the luminosity in the virial equation, and as a result the values obtained are smaller compared to the standard C IV-based estimates that follow Vestergaard & Peterson (2006). The bottom-right panel of Figure 8 shows the BH masses estimated by the Park et al. (2017) method compared with our results using $H\alpha$. Although the scatter is indeed reduced (0.24 dex), we now find a large systematic offset of -0.53 dex. This is in agreement with the results shown in Figure 11 of Park et al. (2017). They point out that their method overpredicts the masses of low mass BHs ($< 10^{8.5} M_{\odot}$), and underpredicts those with high mass BHs similar to our CARLA sample ($> 10^{8.5} M_{\odot}$).

Table 4. Peak ratio and UV and optical continuum luminosities.

SDSS Name	Peak Ratio $\lambda 1400$	L_{1350} (erg s $^{-1}$)	L_{5100} (erg s $^{-1}$)
Radio-loud quasars from CARLA			
J012514–001828	0.173	46.539 \pm 0.02	46.00 \pm 0.05
J082707+105224	0.203	46.146 \pm 0.02	45.92 \pm 0.09
J090444+233354	0.378	46.952 \pm 0.02	46.73 \pm 0.06
J092035+002330	0.184	46.547 \pm 0.03	46.11 \pm 0.03
J094113+114532	0.211	46.430 \pm 0.02	45.49 \pm 0.05
J102429–005255	0.161	46.702 \pm 0.02	46.29 \pm 0.12
J104257+074850	0.285	46.448 \pm 0.04	46.41 \pm 0.10
J110344+023209	0.380	46.529 \pm 0.03	46.38 \pm 0.03
J111857+123441	0.172	46.396 \pm 0.02	45.88 \pm 0.04
J112338+052038	0.272	46.032 \pm 0.03	45.83 \pm 0.04
J115901+065619	0.195	45.650 \pm 0.05	46.03 \pm 0.05
J120301+063441	0.129	45.693 \pm 0.03	46.26 \pm 0.03
J121255+245332	0.604	46.420 \pm 0.07	45.77 \pm 0.11
J121911–004345	0.500	46.822 \pm 0.04	46.13 \pm 0.02
J122836+101841	0.298	46.354 \pm 0.09	46.19 \pm 0.08
J133932–031706	0.175	46.526 \pm 0.04	46.13 \pm 0.09
J140445–013021	0.172	46.778 \pm 0.02	46.29 \pm 0.05
J141906+055501	0.203	46.050 \pm 0.04	45.59 \pm 0.04
J143331+190711	0.106	46.454 \pm 0.02	46.01 \pm 0.11
J145301+103617	0.317	46.010 \pm 0.04	45.83 \pm 0.01
J151508+213345	0.202	46.590 \pm 0.02	46.32 \pm 0.02
J153124+075431	0.367	46.159 \pm 0.03	45.65 \pm 0.01
J153727+231826	1.010	46.250 \pm 0.15	46.36 \pm 0.15
J153925+160400	0.318	46.180 \pm 0.06	45.70 \pm 0.14
J154459+040746	0.113	46.384 \pm 0.02	46.13 \pm 0.04
J160016+183830	0.241	46.386 \pm 0.02	46.08 \pm 0.15
J160154+135710	0.219	46.384 \pm 0.02	46.24 \pm 0.03
J160212+241010	0.265	46.435 \pm 0.02	46.30 \pm 0.06
J230011–102144	0.561	46.730 \pm 0.05	46.13 \pm 0.11
J231607+010012	0.408	46.690 \pm 0.06	46.32 \pm 0.02
Non-CARLA quasars having $M_{\text{BH}}(\text{C IV}) > 10^{10} M_{\odot}$			
J005814+011530	0.837	46.920 \pm 0.05	46.50 \pm 0.10
J081014+204021	0.678	47.133 \pm 0.03	46.68 \pm 0.05
J115301+215117	0.514	47.346 \pm 0.03	46.79 \pm 0.02
J130331+162146	0.594	46.870 \pm 0.04	46.30 \pm 0.04
J210831–063022	1.002	47.032 \pm 0.03	46.65 \pm 0.02

An overview of the successfulness of these corrections as applied to the CARLA sample are given in Table 5, where we list the mean difference between $\log(M_{\text{BH}})$ (C IV) and $\log(M_{\text{BH}})$ ($H\alpha$), the scatter, and the Spearman rank correlation coefficients. We summarize this Section by stating that the $H\alpha$ -based M_{BH} masses of radio-loud quasars in CARLA are, on average, about 0.2 dex higher compared to those estimated from C IV, while at the same time the number of objects having $M_{\text{BH}} > 10^{10} M_{\odot}$ is reduced from five objects to just one. The systematic offsets could be reduced simply by a change of calibration constants used for each relation, although this will likely be strongly sample-dependent.

Among the various methods proposed to improve the C IV-based BH masses tested, the Denney (2012) and Coatman et al. (2017) methods resulted in the best agreement between C IV- and $H\alpha$ -based methods (i.e., they had the smallest mean offsets and similar scatter), while the Runnøe et al. (2013) method had the second strongest correlation

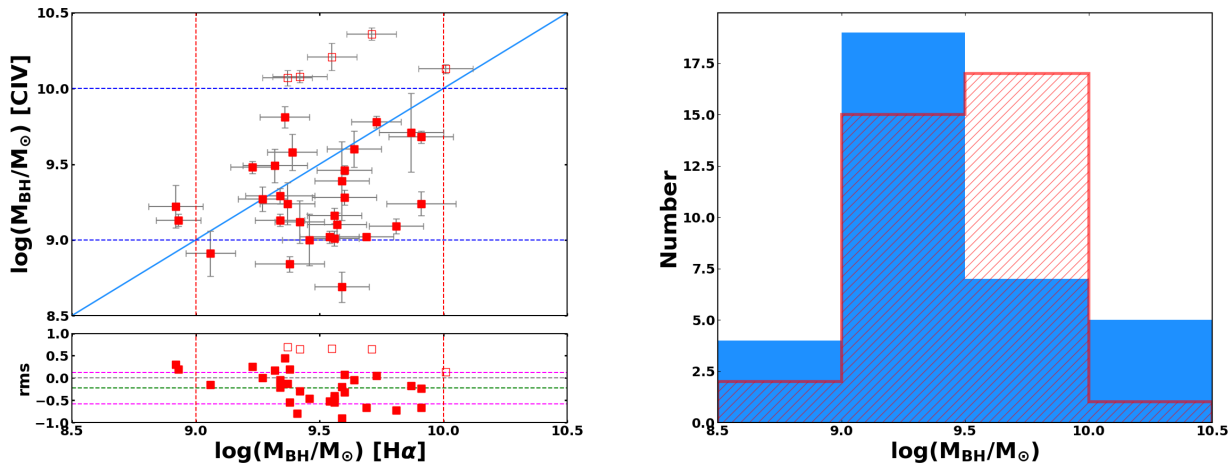


Figure 7. BH masses estimated using H α and C IV. Left panel: values obtained using Vestergaard & Peterson (2006) for C IV and H α (upper left panel) and the difference between $\log(M_{\text{BH}})$ (C IV) and $\log(M_{\text{BH}})$ (H α) (left bottom panel). Filled squares show the CARLA quasars and open squares show the 5 radio-quiet quasars that are not from CARLA. Dotted lines (red for H α and blue for C IV) separate the regions where the M_{BH} are below $10^9 M_{\odot}$ and above $10^{10} M_{\odot}$. Right panel: the distribution of M_{BH} for our sample (blue for C IV and red for H α). While the H α -based masses are higher on average, the number of sources above $10^{10} M_{\odot}$ is reduced with respect to that of the C IV-based masses.

Table 5. Accuracy of the C IV rehabilitation method results as applied to radio-loud quasars from CARLA.

Method	Mean offset ^a (dex)	Scatter ^b (dex)	Correlation coefficient ^c (ρ , p)
Uncorrected (Figure 7)	-0.23	0.35	0.16, 0.41
Denney (2012) (Figure 8, top-left)	-0.06	0.24	0.35, 0.06
Runnoe et al. (2013) (Figure 8, top-right)	-0.24	0.27	0.43, 0.02
Coatman et al. (2017) (Figure 8, bottom-left)	-0.04	0.28	0.47, 0.01
Park et al. (2017) (Figure 8, bottom-right)	-0.53	0.24	0.27, 0.14

^a Mean difference between $\log(M_{\text{BH}})$ (C IV) and $\log(M_{\text{BH}})$ (H α).

^b Standard deviation of the $\log(M_{\text{BH}})$ (C IV) – $\log(M_{\text{BH}})$ (H α) residuals.

^c Spearman rank correlation efficient ρ and p -value.

(after Coatman et al. (2017), but with a large systematic offset).

4.2 Eddington Ratio

The Eddington luminosity (L_{Edd}) is the theoretical maximum luminosity that an object can emit while balancing the outward radiative pressure and inward gravitational force. The Eddington ratio (L/L_{Edd}) is an estimate of the accretion efficiency of a BH, and is believed to be the main driving mechanism of the Eigenvector 1 which correlates with most of the features in Type-1 AGN spectra, such as the ratio of Fe II/H β , the soft X-ray slope, and the blueshift of C IV (Boroson & Green 1992; Marziani et al. 2001; Shen & Ho 2014).

To calculate the Eddington ratio, we apply a bolometric correction factor, f_l , which relates the intrinsic luminosity of the accretion disk to the measured optical luminosity³. We

then divide this bolometric luminosity by the Eddington luminosity for a given BH mass. f_l is known to depend on luminosity, and for our sample ($45.5 < \log(L_{5100}) < 47.5 \text{ erg s}^{-1}$) its range is 5–7 (Marconi et al. 2004). In this paper we follow the approach of Netzer et al. (2007), which assumes $f_l = 7.0$. L/L_{Edd} can then be estimated through:

$$L/L_{\text{Edd}} = \frac{f_l L_{5100}}{L_{\text{Edd}}} = \frac{7.0 L_{5100}}{(1.5 \times 10^{38} M_{\text{BH}}/M_{\odot})} \quad (2)$$

We use Equation 2 to estimate L/L_{Edd} for our sample, as well as for the Coatman et al. (2017) sample for comparison. The results are shown in Figure 9. The left panel shows the distribution of L/L_{Edd} for the CARLA sample. The values have a relatively broad distribution (0.26 dex) with a mean value of $L/L_{\text{Edd}} \approx 0.2$. In the right panel of Figure 9 we compare these results to a larger sample by adding to our sample that of Coatman et al. (2017), which is composed of both

than the total observed bolometric corrections typically applied to AGN (e.g. Elvis, et al. 1994; Marconi et al. 2004; Richards, et al. 2006; Netzer et al. 2007).

³ This bolometric correction refers to the bolometric correction required to obtain the accretion disk luminosity, and is smaller

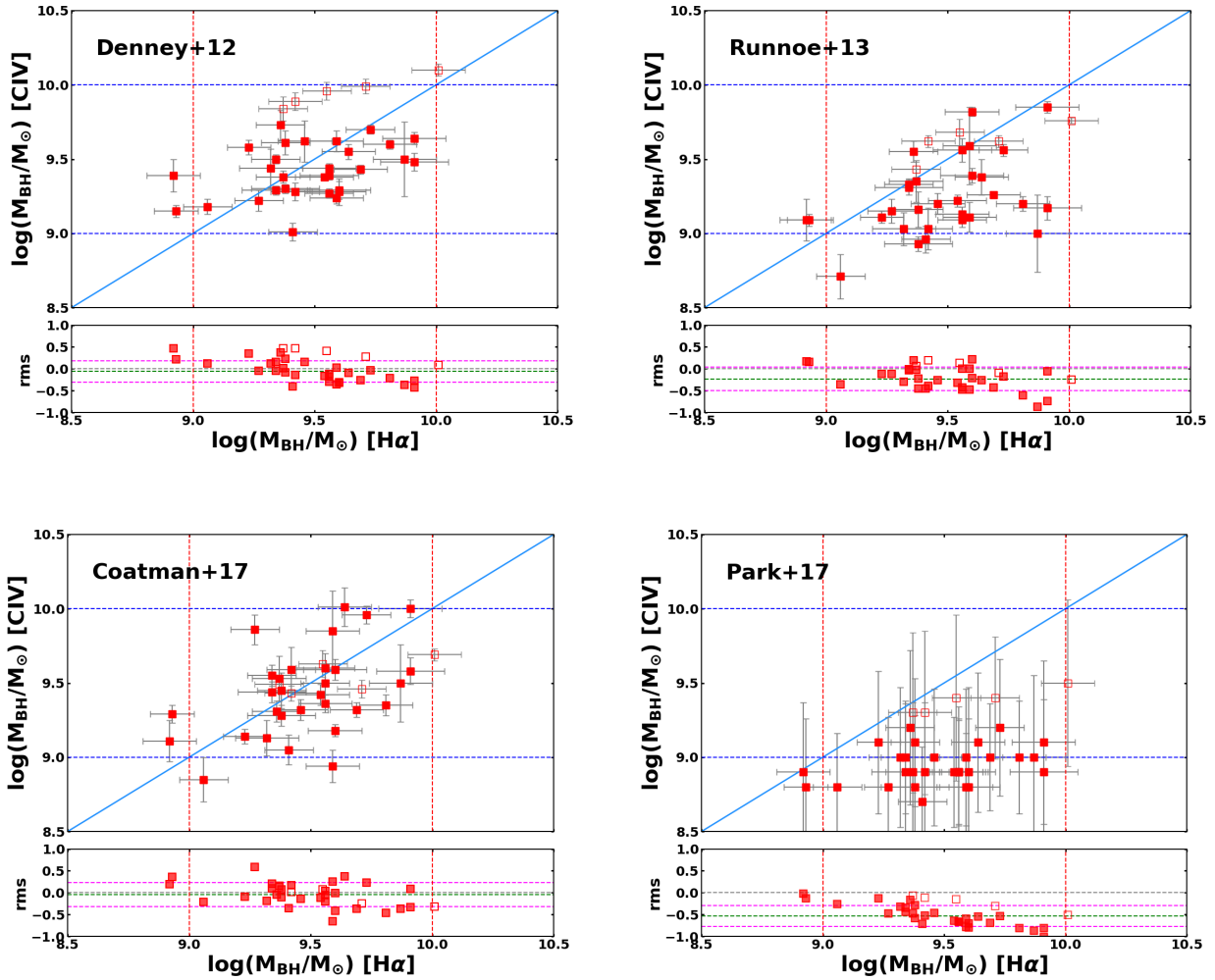


Figure 8. Rehabilitation methods for C IV-based M_{BH} estimates compared to our $\text{H}\alpha$ -based estimates. The top-left panel shows the method from Denney (2012). The top-right panel shows the method of Runnoe et al. (2013). The bottom-left panel shows the method of Coatman et al. (2017). The bottom right panel shows the C IV SE estimates using the Park et al. (2017) new RM results. In all panels, filled squares show the radio-loud quasars from CARLA and empty squares the radio-quiet quasars that are not in CARLA. The red and blue dashed lines demarcate the range $9 < \log(M_{\text{BH}}/M_{\odot}) < 10$. Below each panel we show the absolute differences between the corrected C IV values and the corresponding $\text{H}\alpha$ -based values. The results of these calibrations are summarized in Table 5.

radio-quiet and radio-loud quasars. We split the combined sample into a high ($\text{H}\alpha$ -based) mass ($\log(M_{\text{BH}}/M_{\odot}) > 9.5$) and a low ($\text{H}\alpha$ -based) mass ($\log(M_{\text{BH}}/M_{\odot}) < 9.5$) sample. The lower mass BHs have a higher mean $L/L_{\text{Edd}} \approx 0.4$ (spread of 0.25 dex) than the higher mass BHs (mean $L/L_{\text{Edd}} \approx 0.3$ and spread of 0.33 dex). The latter distribution is very similar to that found for the CARLA sample shown in the left panel, which is expected because the CARLA sample is exclusively composed of radio-loud quasars with high BH masses. The grey histogram shows the distribution we get when we combine the Coatman et al. (2017) and CARLA samples (mean $L/L_{\text{Edd}} \approx 0.37$ with a spread of 0.29 dex). This shows that the CARLA quasars have L/L_{Edd} that are, on average, at most 50% lower than samples consisting of (mostly) radio-quiet quasars of similar masses.

In Figure 10 we plot L/L_{Edd} as a function of the observables $\text{FWHM}(\text{H}\alpha)$ and luminosity (L_{5100}) and the de-

rived BH mass. We have also added the 6 broad line radio galaxies from Nesvadba et al. (2011), and the radio-loud and radio-quiet quasars from Coatman et al. (2017). The general trends in the three panels follow readily from Equation 2, in which L/L_{Edd} is proportional to L_{5100} and inversely proportional to M_{BH} (which itself is proportional to both $\text{FWHM}(\text{H}\alpha)$ and L_{5100} ; see Equation 1). The strongest differences are between the radio-quiet objects from Coatman et al. (2017) on one hand, and the radio-loud quasars from both samples on the other hand. Although the Coatman et al. (2017) radio-quiet sample contains quasars that are found in the same region of parameter space as the radio-loud objects, it also contains quasars with significantly higher luminosities and Eddington ratios and lower BH masses.

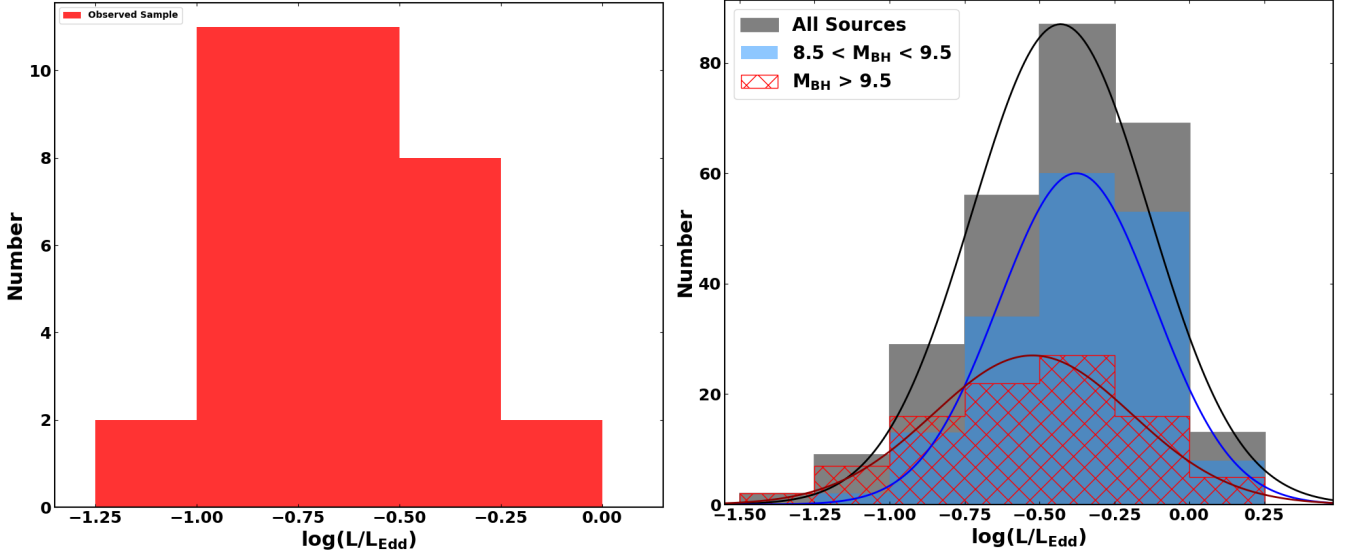


Figure 9. Distribution of L/L_{Edd} for the quasars. Left panel: distribution of L/L_{Edd} for the CARLA subsample observed with SINFONI. Right panel: Distribution of L/L_{Edd} for the quasars in our sample combined with quasars from the Coatman et al. (2017) sample (grey shaded histogram and black line). The red-hatched histogram and red line show the distribution for $M_{\text{BH}} > 10^{9.5} M_{\odot}$, while the blue shaded histogram and blue line show distribution for $M_{\text{BH}} < 10^{9.5} M_{\odot}$.

4.3 Growth Time

To estimate BH growth times (t_{grow}) we first assume that the BH experiences a period of continuous growth during their active phase starting from a seed BH mass. We use the original expression from Salpeter (1964):

$$t_{\text{grow}} = t_{\text{Edd}} \frac{\eta/(1-\eta)}{L/L_{\text{Edd}}} \log\left(\frac{M_{\text{BH}}}{M_{\text{seed}}}\right) \frac{1}{f_{\text{active}}} \text{ yr}, \quad (3)$$

where $t_{\text{Edd}} = 3.5 \times 10^8 \text{ yr}$ is the Eddington time, η is the accretion efficiency, and f_{active} is the fraction of the time that the BH is actively accreting. The efficiency depends on BH spin and typical values range an order of magnitude ($\eta = 0.04 - 0.4$) from retrograde to prograde accretion or BH spin of $a = \pm 1$. Typical values of $\eta = 0.2$ are generally assumed, reflecting a non-zero angular velocity (King et al. 2004). The BH seed can have a low mass ($M_{\text{seed}} = 10^{2-4} M_{\odot}$) when resulting from Population-III stars, or larger ($M_{\text{seed}} = 10^{4-6} M_{\odot}$) when resulting from direct gas cloud collapse (Begelman et al. 2006). In this work we follow Netzer et al. (2007), assuming $\eta = 0.2$, $M_{\text{seed}} = 10^4 M_{\odot}$, and $f_{\text{active}} = 1$. Additionally, we calculate the growth time using a lower efficiency, $\eta = 0.1$. From these parameters and Equation 3 we estimate the growth time for our sample as well as the Coatman et al. (2017) sample which is dominated by radio-quiet quasars (383 out of 409). The values obtained for t_{grow} for our sample are listed in Column 9 of Table 6, where we divided the values by the age of the universe at each redshift, $t(z)$. We plotted the distribution of growth times in Figure 11. For the assumed efficiency, 15 of our 35 quasars have $t_{\text{grow}}/t(z) > 1$. This indicates that the typical efficiencies or duty cycles assumed are too high for a substantial fraction of our sample. Comparing the two samples in Figure 11, we find that radio-quiet and radio-loud quasars follow somewhat different distributions in t_{grow} , with radio-quiet quasars

having, on average, lower growth times compared to radio-loud quasars due to their higher accretion rates.

In order to highlight these differences in growth times, we plot $t_{\text{grow}}/t(z)$ against $\text{FWHM}(\text{H}\alpha)$, optical luminosity, and M_{BH} in Figure 12. Although t_{grow} is also a function of $\text{FWHM}(\text{H}\alpha)$, L_{5100} and M_{BH} , and the trends are those that are expected, the normalization by $t(z)$ ensures that the comparison between quasars at different redshifts is done in a fair way. Similar to Figure 10, the key differences are observed between the radio-loud quasars from CARLA and Coatman et al. (2017) on one hand, and the radio-quiet quasars from Coatman et al. (2017) on the other. The latter are found at $t_{\text{grow}}/t(z) < 1$ in the majority of the cases, whereas the radio-loud quasars exceed the maximum available growth time in more than half of the cases. We will discuss the implications of these results in Section 5.2.

4.4 Trends with Radio Power

Radio-loud quasars are known to harbor SMBHs that lie at the high-mass end of the mass function ($M_{\text{BH}} > 10^8 M_{\odot}$), up to three orders of magnitude higher compared to typical radio-quiet quasars (Laor 2000; McLure et al. 2001). This correlation between radio-loudness and BH mass suggests that the properties of the SMBH play some role in the formation of the jet (Gu et al. 2001; Lacy et al. 2001; Chiaberge et al. 2015). Moreover, radio-loud AGN are more strongly clustered than radio-quiet AGN, suggesting that they are found in more massive halos (Overzier et al. 2003; Retana-Montenegro & Röttgering 2017). This implies that radio-loudness alone is already a good indicator of the BH mass in any quasar sample (Retana-Montenegro & Röttgering 2017). Our sample is characterized by powerful radio-loud quasars ($P_{500\text{MHz}} > 10^{27.5} \text{ W Hz}^{-1}$) and extremely massive BHs ($M_{\text{BH}} > 10^9 M_{\odot}$). In this section we investigate if

Table 6. Black Hole masses, Eddington ratios and growth times.

SDSS Name	H α	C IV	Rehabilitated C IV measurements				L/L_{Edd}	$t_{\text{growth}}/t(z)$
	$\log(M_{\text{BH}}/M_{\odot})$	$\log(M_{\text{BH}}/M_{\odot})$	$\log(M_{\text{BH}}/M_{\odot})$ (Denney+12)	$\log(M_{\text{BH}}/M_{\odot})$ (Runnoe+13)	$\log(M_{\text{BH}}/M_{\odot})$ (Coatman+17)	$\log(M_{\text{BH}}/M_{\odot})$ (Park+17)		
Radio-loud quasars from CARLA								
J012514-001828	9.34±0.10	9.13±0.04	9.50±0.03	9.32±0.04	9.54±0.07	8.95±0.38	0.21	0.81
J082707+105224	9.36±0.11	9.23±0.14	9.38±0.04	9.35±0.14	9.52±0.15	8.85±0.47	0.16	1.03
J090444+233354	9.73±0.10	9.77±0.04	9.70±0.03	9.56±0.04	9.96±0.06	9.24±0.46	0.45	0.39
J092035+002330	9.91±0.13	9.68±0.04	9.64±0.04	9.85±0.04	9.99±0.06	9.09±0.55	0.07	2.79
J094113+114532	9.37±0.14	8.83±0.05	9.29±0.03	8.93±0.05	9.28±0.07	8.84±0.48	0.06	4.09
J102429-005255	9.69±0.11	9.02±0.02	9.43±0.03	9.26±0.02	9.31±0.05	8.97±0.36	0.18	1.11
J104257+074850	9.91±0.14	9.24±0.08	9.47±0.06	9.17±0.08	9.57±0.09	8.94±0.49	0.14	1.52
J110344+023209	9.64±0.11	9.59±0.12	9.55±0.05	9.37±0.12	10.01±0.13	9.06±0.47	0.25	0.78
J111857+123441	9.53±0.12	9.01±0.04	9.37±0.02	9.22±0.04	9.41±0.07	8.87±0.37	0.10	1.61
J112338+052038	8.92±0.09	9.12±0.04	9.15±0.04	9.08±0.04	9.28±0.06	8.78±0.46	0.37	0.40
J115901+065619	9.60±0.11	9.68±0.03	9.28±0.09	9.81±0.03	9.18±0.04	8.93±0.57	0.12	1.37
J120301+063441	9.41±0.10	8.60±0.09	9.00±0.06	8.96±0.09	9.04±0.10	8.67±0.37	0.32	0.50
J121255+245332	9.31±0.13	9.49±0.11	9.44±0.13	9.02±0.11	9.13±0.12	9.00±0.47	0.13	1.37
J121911-004345	9.23±0.09	9.47±0.04	9.58±0.05	9.11±0.04	9.14±0.05	9.12±0.48	0.36	0.46
J122836+101841	9.41±0.10	9.11±0.14	9.27±0.06	9.02±0.14	9.59±0.15	8.88±0.47	0.27	0.63
J133932-031706	9.58±0.11	9.39±0.26	9.62±0.07	9.58±0.26	9.85±0.27	9.01±0.46	0.16	1.12
J140445-013021	9.45±0.11	8.99±0.17	9.62±0.14	9.19±0.07	9.31±0.07	8.99±0.46	0.31	0.61
J141906+055501	9.59±0.13	9.27±0.05	9.28±0.06	9.38±0.05	9.58±0.07	8.83±0.46	0.04	3.98
J143331+190711	9.56±0.12	9.10±0.08	9.39±0.03	9.56±0.08	9.59±0.10	8.91±0.36	0.12	1.43
J145301+103617	9.27±0.10	9.27±0.08	9.22±0.07	9.14±0.08	9.86±0.10	8.81±0.47	0.16	1.00
J151508+213345	9.80±0.11	9.08±0.05	9.59±0.03	9.20±0.05	9.34±0.07	8.95±0.38	0.15	1.22
J153124+075431	9.05±0.10	8.90±0.15	9.18±0.05	8.70±0.15	8.85±0.15	8.77±0.36	0.18	0.98
J153727+231826	9.87±0.13	9.70±0.26	9.47±0.25	8.97±0.26	9.45±0.26	9.00±0.55	0.14	1.31
J153925+160400	8.92±0.11	9.21±0.14	9.38±0.11	9.09±0.14	9.11±0.14	8.85±0.47	0.27	0.63
J154459+040746	9.58±0.11	8.68±0.10	9.24±0.04	9.11±0.10	8.93±0.11	8.79±0.36	0.16	1.05
J160016+183830	9.33±0.14	9.28±0.05	9.28±0.03	9.31±0.05	9.43±0.07	8.94±0.46	0.25	0.71
J160154+135710	9.55±0.10	9.01±0.05	9.27±0.03	9.08±0.05	9.50±0.08	8.87±0.35	0.22	0.77
J160212+241010	9.56±0.11	9.15±0.05	9.43±0.03	9.13±0.05	9.35±0.06	8.92±0.44	0.25	0.77
J230011-102144	9.38±0.10	9.58±0.12	9.60±0.08	9.15±0.12	9.45±0.12	9.12±0.43	0.25	0.68
J231607+010012	9.35±0.10	9.80±0.07	9.72±0.10	9.54±0.07	9.31±0.07	9.16±0.52	0.42	0.47
Non-CARLA quasars having $M_{\text{BH}}(\text{C IV}) > 10^{10} M_{\odot}$								
J005814+011530	9.36±0.10	10.06±0.05	9.84±0.08	9.42±0.05	9.49±0.06	9.30±0.54	0.63	0.30
J081014+204021	9.54±0.10	10.21±0.09	9.95±0.06	9.68±0.09	9.62±0.09	9.40±0.56	0.62	0.31
J115301+215117	10.01±0.11	10.13±0.03	10.10±0.04	9.75±0.02	9.68±0.04	9.45±0.56	0.28	0.71
J130331+162146	9.41±0.11	10.07±0.04	9.89±0.06	9.61±0.04	9.42±0.05	9.29±0.55	0.35	0.50
J210831-063022	9.70±0.10	10.35±0.04	9.99±0.05	9.62±0.04	9.46±0.06	9.41±0.41	0.39	0.47

the radio activity correlates with any of the other properties of the sample derived in the previous sections.

We plot in Figure 13 radio power versus FWHM(H α), L_{5100} , blueshift of C IV, M_{BH} , L/L_{Edd} , and t_{grow} . We do not find any significant correlations between most of these properties and $P_{500\text{MHz}}$, but we note that our sample spans only about one order of magnitude in radio power, optical luminosity and BH mass and is thus not very well suited to search for such correlations. We do not find a correlation between radio power and BH mass for the radio-loud CARLA quasars, but it must be noted that the range of radio luminosities in our sample is quite small compared to the dynamic range of radio-loud AGN in general (i.e., typically from 10^{24} to $> 10^{29}$ W Hz $^{-1}$). It has previously been shown that there is a minimum threshold M_{BH} above which radio emission can be triggered (Laor 2000; Magliocchetti et al. 2004). Other recent work has suggested a strong correlation between the fraction of galaxies that are radio-loud and the mass of the BHs, but this relation is primarily driven by the correlation between radio-loudness and stellar mass (Sabater et al. 2019). Xiong et al. (2013) found a strong correlation between M_{BH} and radio luminosity at 5 GHz for 97 radio-loud quasars at $z = 0 - 2.2$. Their sample consisted of quasars having lower radio luminosities but equally massive BHs compared to the CARLA sample studied here. If

the BH mass measurements of $M_{\text{BH}} \sim 10^{10} M_{\odot}$ found for the small sample of very powerful broad line radio galaxies by Nesvadba et al. (2011) are representative for the population of radio galaxies as a whole, this would indeed suggest that the most powerful radio emission is associated with the most massive BHs. Although radio-quiet quasars exist with similarly high BH masses (e.g., Table 6), this could be explained by the episodic activity of the radio jet formation.

Because L/L_{Edd} and t_{grow} are both properties of quasars that depend on the entire past history of accretion, it is perhaps not surprising that these properties do not correlate strongly with the (currently observed) radio power. The fact that the optical luminosity and accretion rate do not correlate with radio power further suggests that radio power has no influence on what happens on scales of the accretion disk. This does not mean that radio power is not a good proxy for the strength of possible feedback effects associated with the radio jets in these quasars on larger scales. Hardcastle et al. (2019), for example, found a strong correlation between the radio power and kinetic luminosity density in a large sample of radio-loud AGN with radio luminosities up to $\sim 10^{26}$ W Hz $^{-1}$ (see also Sabater et al. 2019).

The strongest trend we find is a lack of large C IV blueshifts at the highest radio powers. The largest C IV blueshifts (> 1500 km s $^{-1}$) are exclusively found for the low-

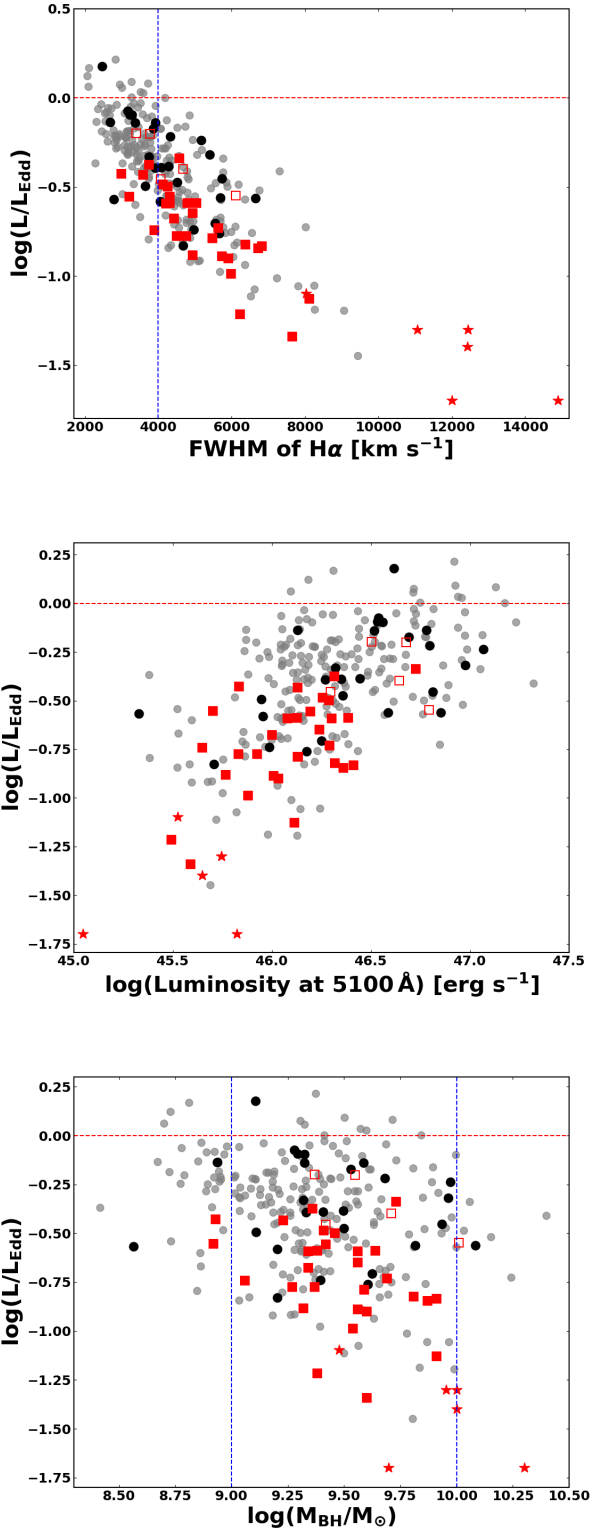


Figure 10. Quasar properties as function of Eddington ratio. Panels show (top) the correlation between L/L_{Edd} and $\text{FWHM}(\text{H}\alpha)$, (middle) L/L_{Edd} and L_{5100} , and (bottom) L/L_{Edd} and M_{BH} . In all panels red filled and open squares, respectively, show the CARLA and non-CARLA quasars from this paper, while the black squares and grey dots show the radio-loud and radio-quiet quasars from Coatman et al. (2017), respectively. Red stars are the broad line radio galaxies from Nesvadba et al. (2011).
MNRAS 000, 1–22 (2019)

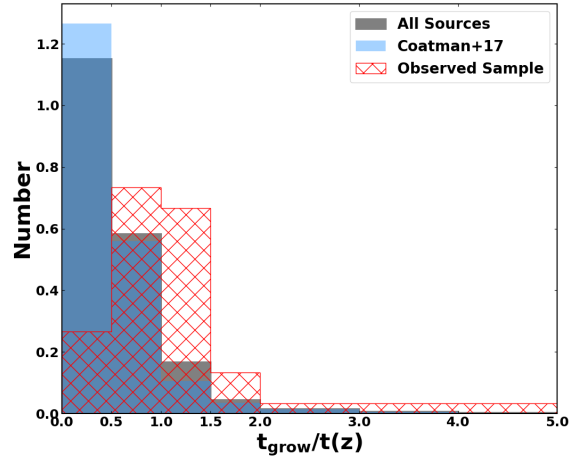


Figure 11. Distribution of the quasar growth times. The red dashed histogram shows the values derived for the CARLA sample, the blue solid histogram shows the Coatman et al. (2017) sample and the grey histogram shows the two samples combined. See Section 4.3 for details.

est power ($< 10^{28} \text{ W Hz}^{-1}$) radio sources (top-right panel of Figure 13). This general trend is furthermore consistent with our finding that the 5 radio-quiet quasars that are not in CARLA have some of the highest C IV blueshifts (Table 3). It is likely that this trend is mainly driven by a correlation between the magnitude of the blueshift of C IV and Eddington ratio, as shown in Figure 14. Although there is a large amount of scatter in the size of the blueshift at any given Eddington ratio, the median blueshift increases with Eddington ratio for radio-quiet and radio-loud objects alike (the median blueshift is about 2000 km s^{-1} for L/L_{Edd} of ~ 1 , while it is about 0 km s^{-1} for L/L_{Edd} of ~ 0.1). It is well-known that larger C IV blueshifts tend to occur in brighter and higher L/L_{Edd} quasars (Richards et al. 2011). Because high redshift quasar samples are furthermore skewed toward higher luminosities compared to low redshift quasar samples (e.g. Mazzucchelli et al. 2017), this could explain the large blueshifts observed in the CARLA sample and is consistent with the fact that we see the strongest blueshifts for the objects with the lowest radio luminosities, as these also tend to have the highest optical luminosities. Although it is likely that the radio core luminosities would correlate with optical luminosity, the CARLA sample was constructed at low radio frequencies where the emission from the jet/lobes dominates rather than from the core.

One way to interpret these observations is that as the mass accretion rate onto the SMBH (i.e., the Eddington ratio L/L_{Edd}) increases, the power and velocity of the wind (the latter traced by the C IV blueshift) gets stronger, possibly due to the increased radiation pressure which drives the mass-loss from the accretion disk (e.g. Proga, Stone & Drew 1998; Zubovas & King 2012). At the same time, an increase in the Eddington ratio leads to a change in the structure of the accretion disk, making it thinner and thereby suppressing the formation of a relativistic jet (e.g. Meier 2001; Avara, McKinney & Reynolds 2016). Such jet suppression as due to

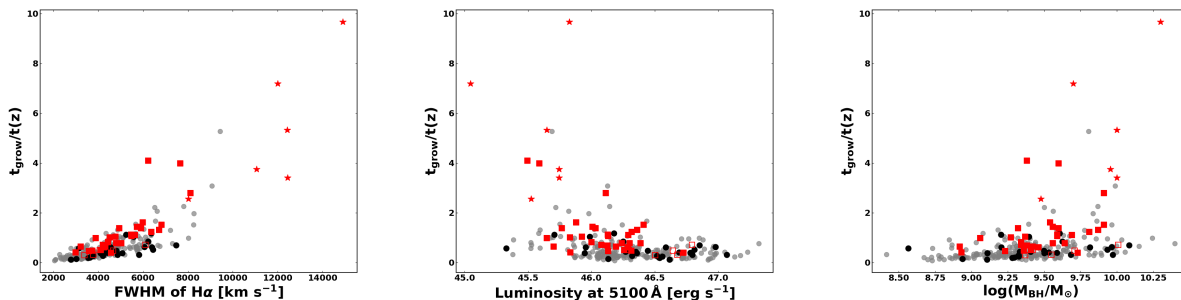


Figure 12. Quasar properties as function of the growth time. Panels show t_{grow} versus FWHM of $H\alpha$ (left), t_{grow} versus L_{5100} (middle), and t_{grow} versus M_{BH} (right). In all panels, red filled squares show the quasars from CARLA, red empty squares show the radio-quiet quasars in our sample that are not from CARLA, and black squares (grey dots) show radio-loud (radio-quiet) quasars from Coatman et al. (2017). Red stars are the broad line radio galaxies from Nesvadba et al. (2011). See Section 4.3 for details.

a change in the accretion state is widely observed in stellar mass BHs (e.g. Fender & Belloni 2012). The upper right panel of Figure 13 shows that near-zero blueshifts occur at all radio powers, while the largest blueshifts ($> 1500 \text{ km s}^{-1}$) are exclusively found for the lowest radio power sources. This result, combined with the correlation between blueshift and L/L_{Edd} shown in Figure 14, suggests a scenario in which as the accretion rate increases, the outflow as traced by the C IV-blueshift becomes stronger (perhaps due to an increase in radiation pressure), leading to a quenching of the relativistic radio jets. Further discussion of this topic is outside the scope of this work.

5 DISCUSSION

5.1 C IV versus $H\alpha$ -based mass estimates

Among the methods used to estimate the M_{BH} of quasars from SE spectra, the most reliable are those based on the Balmer lines for at least three reasons: (i) most RM studies were done using the continuum luminosity at 5100 Å and $H\beta$; (ii) the Balmer lines are ‘well behaved’ lines, showing highly symmetrical profiles; and (iii) the Balmer lines are located in a spectral region with low contamination of other lines. In Section 4.1 we used K -band spectroscopy of CARLA quasars to estimate M_{BH} using the $H\alpha$ line, thereby obtaining new estimates that should be significantly more reliable than the previous ones that were based on C IV. We found that the BH masses obtained using $H\alpha$ are significantly different from those based on C IV. One important check that needs to be performed on $H\alpha$ -based masses is to make sure they are not affected by double peaked emission lines. Jun et al. (2017) warn that lines with a FWHM in excess of 8000 km s^{-1} could be indicative of double-peaked lines which could bias the M_{BH} estimates. Their analysis of 26 SDSS quasars at $0.7 < z < 2.5$ with extremely high BH masses ($M_{\text{BH}} > 10^{9.5} M_{\odot}$) showed that in seven quasars a double peak was present (five of which had $\text{FWHM} > 8000 \text{ km s}^{-1}$). In our sample, four out of 35 quasars have $\text{FWHM}(H\alpha) > 8000 \text{ km s}^{-1}$, but we do not find any evidence for double peaks based on the high level of symmetry of the lines.

The asymmetric shape of C IV is one of the main factors

causing the problems in the C IV-based methods. The presence of a non-reverberating component of C IV would imply that not all of the flux observed comes from the virialized region. Denney (2012) show that this component is often present, and their correction is based on the correlation between the non-variable component of the line and the C IV shape profile. The non-reverberating component of C IV is also associated with outflows and winds originating from the very central region of the AGN (Bachev et al. 2004; Baskin & Laor 2005). Coatman et al. (2016) found for a small sample of quasars that the large blueshift of C IV is present in sources accreting around the Eddington limit. We therefore plot in Figure 14 the blueshift of C IV as a function of the Eddington ratio. There is a weak correlation ($\rho = 0.40$ with $p = 0.002$) between these quantities, showing that the non-variable component of C IV may indeed be associated with a non-reverberating component possibly related to feedback from the AGN.

Among the various methods for C IV rehabilitation that we tested in Section 4.1 (see Table 5), the Denney (2012) and Coatman et al. (2017) methods best reproduced the BH masses estimated from $H\alpha$ for our sample of radio-loud quasars. However, as pointed out by Park et al. (2017) (see their Figure 11), the Coatman et al. (2017) method has the potential to overestimate M_{BH} when the C IV blueshift is negative. Coatman et al. (2017) warn about extrapolating their method in the negative blueshift regime, since their sample does not cover a large dynamic range. However, both methods have the advantage over, for example, the Runnoe et al. (2013) correction method, because the S/N of the 1400 Å line complex is usually faint in high-redshift sources and negative C IV blueshifts are furthermore rare.

Other factors may contribute to the scatter between the C IV and Balmer methods such as differences in the mass scale relationships for each line (McGill et al. 2008). Another common source of error is contamination of $H\beta$. Most studies focus on the problems with C IV since $H\beta$ has been studied in detail in RM studies. However, this line has its own problems such as a strong narrow line component (although not important in our sample), host galaxy contamination, and a strong underlying Fe II pseudo-continuum (Bentz et al. 2009; Park et al. 2012). These problems are worse in low S/N spectra (Assef et al. 2011).

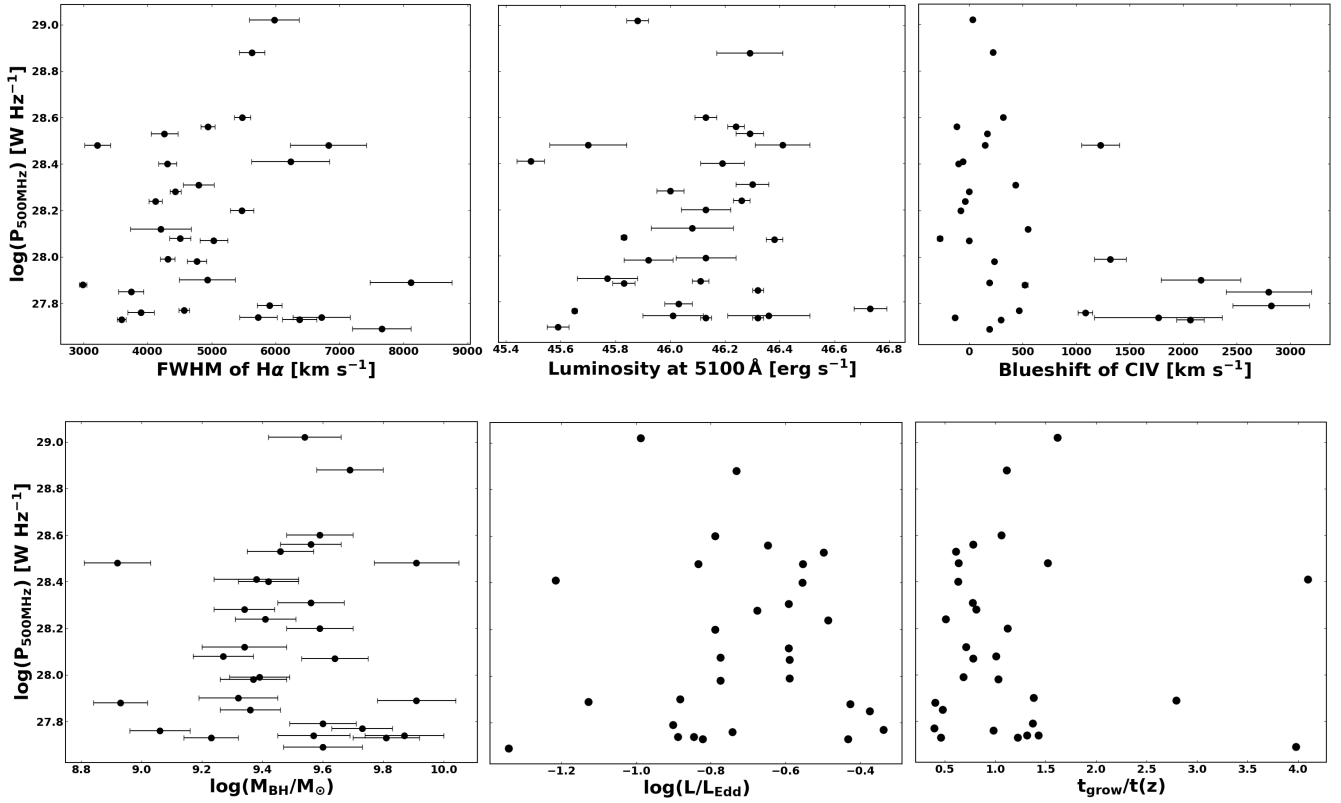


Figure 13. Radio power versus other properties derived in this work for radio-loud quasars from CARLA. Top row of panels show $P_{500\text{MHz}}$ versus FWHM of $\text{H}\alpha$ (left), optical luminosity (middle), and C IV blueshift (right). Bottom row of panels show $P_{500\text{MHz}}$ versus M_{BH} (left), L/L_{Edd} (middle), and t_{grow} (right).

5.2 The Growth History of CARLA Quasars

In this work we obtained robust BH masses for 35 quasars at $z \sim 2$, finding masses ranging from $\sim 10^9 M_{\odot}$ to $\sim 10^{10} M_{\odot}$. The results in Sections 4.2 and 4.3 show that these quasars are actively accreting, and have likely been growing for a substantial fraction of cosmic time. We have also shown that at fixed accretion rates, the growth times for radio-loud quasars tend to be longer than those of radio-quiet quasars, but this is mainly a consequence of the fact that the BH masses of radio-loud quasars are higher. In this section we explore a few simple evolutionary scenarios that may approximate the growth history of the CARLA quasars (Figure 15).

The first scenario we consider is that the CARLA quasars have always accreted at their L/L_{Edd} measured at $z \sim 2-3$. These are indicated by the dashed tracks in Figure 15. These tracks are much too shallow (i.e., they rise too slowly with decreasing redshift), requiring the existence of seeds that are likely much too massive ($\gtrsim 10^7 M_{\odot}$) too early ($z \gtrsim 45$). This is a consequence of the long growth times we found for a significant fraction of the CARLA quasars. These growth times are often longer than the age of the universe (much longer in some cases). It is worth pointing out that this discrepancy is exacerbated by the fact that the values estimated here are actually a lower limit for the growth time. For example, an *active* smaller than unity, a lower seed mass or a lower accretion rate would result in even longer growth

times. Similar results were found by Netzer et al. (2007) for a significant fraction of quasars at $z = 2.3-3.4$.

The second, extreme scenario we consider is that the CARLA quasars grew at or near the Eddington limit for most of their lifetime (red solid track). This scenario easily reproduces the observed masses from relatively small seeds ($\sim 1000 M_{\odot}$) at relatively late times ($z \lesssim 6$), but probably is also not very realistic. First of all, it does not agree with the much lower values of L/L_{Edd} measured for these CARLA quasars, but this is not such an important issue given that the accretion rate can easily fluctuate. A more serious objection to this scenario is that it assumes that $\sim 1000 M_{\odot}$ seeds are lingering at the centers of the quasar host galaxies as recent as $z \sim 3$, even though those host galaxies themselves have already reached masses of the order of $\sim 10^{10-12} M_{\odot}$.

The last scenario we consider here is that the CARLA quasars are direct descendants of the objects hosting the most distant SMBHs known at $z \simeq 6-8$ (e.g., Mortlock et al. 2011; Wu et al. 2015; Bañados et al. 2018). Bañados et al. (2018) analysed the possible formation history of a quasar at $z = 7.56$ with a SMBH of $\sim 8 \times 10^8 M_{\odot}$ (blue circle and blue line in Figure 15). They presented an evolutionary track for a seed mass of $1000 M_{\odot}$ at $z = 40$ growing at the Eddington limit with an efficiency of 10%. In Figure 15 we show this evolutionary track (blue line). Similarly, we indicate Eddington-limited tracks (grey lines) for a subset of other quasars at $z \sim 6-7$ (grey circles) from Gallerani

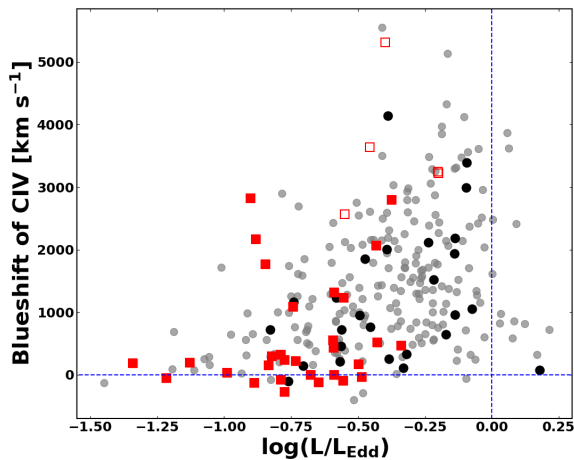


Figure 14. Blueshift of C IV as a function of Eddington ratio. Red filled and empty squares, respectively, show the CARLA and non-CARLA quasars observed in this work. Black circles (grey circles) show the radio-loud (radio-quiet) quasars from Coatman et al. (2017). Vertical and horizontal blue dashed lines indicate the Eddington limit and a zero blueshift of C IV, respectively.

et al. (2017). If we want to force a scenario in which the lower redshift SMBHs in CARLA quasars are the direct descendants of those in the higher redshift quasars, the latter must either drastically reduce their accretion rates after $z \sim 6$ (assuming a constant efficiency, η) or grow more intermittently by decreasing their duty cycle (see Trakhtenbrot et al. 2012). Interestingly, we can easily unite the two populations by assuming that the SMBHs first grow at or near the Eddington limit reaching about 10% of their observed masses by $z \simeq 6 - 8$, followed by a phase of slower accretion given by the actual Eddington ratios measured for the CARLA quasars at $z \sim 2 - 3$ (thick black curves in Figure 15). Such a fast accretion phase at close or equal to the Eddington limit of BHs at early times, followed by a slower accretion phase at later times, is also supported by the results of Marconi et al. (2004). This scenario is also consistent with the recent theoretical results by McAlpine et al. (2018) based on the simulations of Schaye et al. (2015). These authors showed that BHs only spend $\sim 15\%$ ($\sim 1.4\text{Gyr}$) of their active phase in a state of rapid accretion, which is close to the age of the universe at $z \sim 6 - 7$. Most of their active phase is spent in the AGN-feedback regulated state with lower accretion rates.

It is important to note that a substantial fraction of the CARLA quasars would still exceed the empirical upper limit on BH mass of $\sim 2 \times 10^{10} M_{\odot}$ by $z \sim 1 - 3$ even at their observed (sub-Eddington) accretion rates (black solid lines in Figure 15). A further quenching of the BH activity will thus be required in order not to exceed this limit (e.g., see King 2016; Inayoshi & Haiman 2016, for a discussion of the limit black hole mass). The mechanism to accomplish this may be readily available in the CARLA objects, given that they all host very powerful radio jets, believed to be important agents that could provide such feedback. Our findings for the CARLA radio-loud quasars are also broadly consistent

with the results found for the CARLA radio galaxies. Falkendal et al. (2019) derived BH accretion and star formation rates for radio galaxies at $z \sim 1 - 5$ (see also Drouart et al. 2014), concluding that while their star formation appears to have been quenched (i.e., they lie below the star-forming main sequence relation), their BHs are still rapidly accreting. Coupled with the high BH masses measured by Nesvadba et al. (2011) for a small subsample and the similarly high BH masses of $M_{\text{BH}} \sim 10^9 - 10^{10} M_{\odot}$ assumed for the remainder of the sample of radio galaxies, this implies that both their BH accretion rates will have to come down fast while their host galaxies will still have to increase their stellar mass in order to not violate the local $M_{\text{BH}} - \sigma_{*}$ relation. This stellar mass growth could be accomplished mainly through dry mergers as this ensures that no further star formation or BH accretion occurs⁴ (Falkendal et al. 2019).

Focusing again on the earliest, very rapid phase of the BH growth that occurred at $z \gtrsim 6$, the calculations thus far considered assume that this growth is through efficient accretion only. However, theoretical modeling shows that, in fact, both BH mergers and radiatively (in)efficient accretion are necessary ingredients (Volonteri et al. 2007; Volonteri 2008). Such models show that a $10^9 M_{\odot}$ SMBH can be built in 100 Myr if the efficient accretion regime starts as soon as the seed reaches 10% of the final desired mass of the M_{BH} . In this scenario, mergers could drive the BH growth up to the 10% seed mass, after which accretion of gas associated with the mergers takes over the growth. However, it is still an open question whether the necessary number of BH-hosting halos indeed occurs at these high redshifts (Regan et al. 2019). In terms of the overall BH mass growth, this early-merging scenario is not very different quantitatively from the fast-followed-by-slow-accretion scenario considered above (black solid tracks in Figure 15). This scenario also agrees with the results of Merloni (2004) and Trakhtenbrot et al. (2012), who showed that $M_{\text{BH}} > 10^9 M_{\odot}$ BHs predominantly formed during high Eddington rate growth spurts at $z \gtrsim 2$. These BHs are likely to be among the progenitors of the relic BHs found at the centers of local clusters (McConnell et al. 2011). If the most massive SMBHs are furthermore preferentially located in the most massive halos (see Section 5.3), they may have experienced a relatively high merger rate at early times. These mergers would increase the BH spin (Orsi et al. 2016), which would favor both the accretion rate and the formation of radio jets (Cattaneo 2002; Volonteri et al. 2007). Although the results shown in Figure 10 point to a general scenario where the more massive BHs in our sample typically have lower accretion rates than the less massive BHs, there is substantial scatter with some of the most massive BHs also having some of the highest accretion rates. These cases could be explained by massive BHs experiencing a secondary fast accretion event, perhaps as the result of a recent major merger in which the gas supply of a quasar or inactive BH is momentarily replenished.

⁴ BH growth may still occur through binary BH mergers

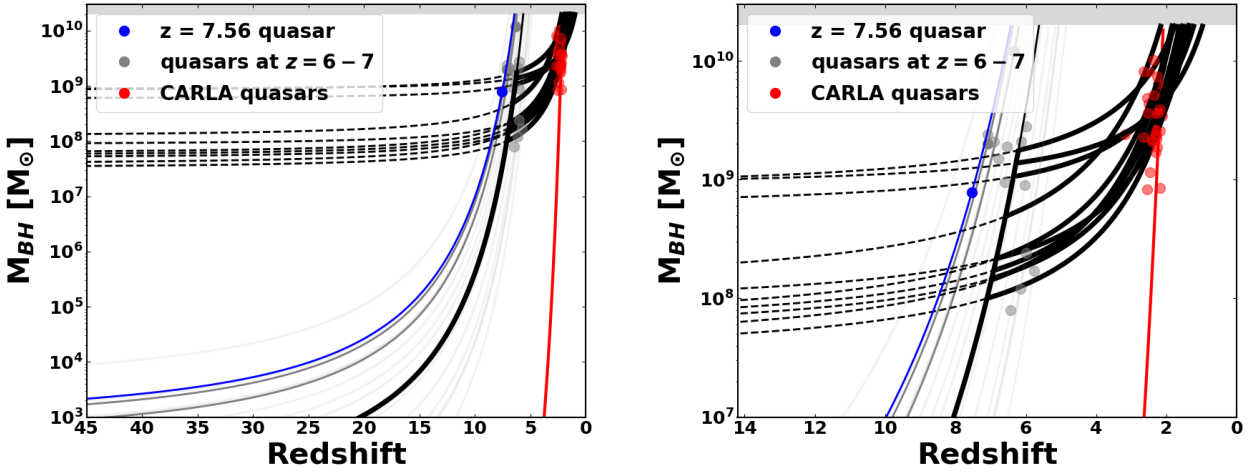


Figure 15. BH masses and possible evolutionary tracks for high-redshift quasars in the $z = 0 - 45$ (left-hand panel) and the $z = 0 - 15$ redshift range (right-hand panel). Red filled circles at $z \simeq 2 - 3$ show the CARLA quasars from this paper. The blue circle shows the quasar at $z = 7.56$ from Bañados et al. (2018), and the grey circles a sample of quasars at $z = 6 - 7$ (Gallerani et al. 2017). Lines trace the possible growth histories of these SMBHs. The blue line shows the Eddington-limited growth of a $1000 M_{\odot}$ seed at $z \gtrsim 45$ that is consistent with the $z = 7.56$ quasar (blue circle) from Bañados et al. (2018), while the grey lines show the same tracks for $z \sim 6 - 7$ quasars (grey circles). Black dashed lines trace the masses of CARLA quasars back in time assuming they always grew at their observed Eddington ratios. These tracks require extremely large seed masses at high redshifts that are likely not physical (i.e., $> 10^7 M_{\odot}$ at $z \sim 45$). The solid black lines assume Eddington-limited growth that can produce the population of $\gtrsim 10^8 M_{\odot}$ BHs observed at $z \simeq 6 - 7$ (grey circles). Extending these curves to $z \sim 2 - 3$ at the Eddington ratios measured for the CARLA quasars (red circles) can reproduce their measured BH masses (red circles). The red line shows a track of Eddington-limited growth starting from a $\sim 1000 M_{\odot}$ seed at $z < 5$, which can also reproduce the BH masses of the CARLA quasars. The grey shaded region marks masses above the empirical limit of $\sim 2 \times 10^{10} M_{\odot}$.

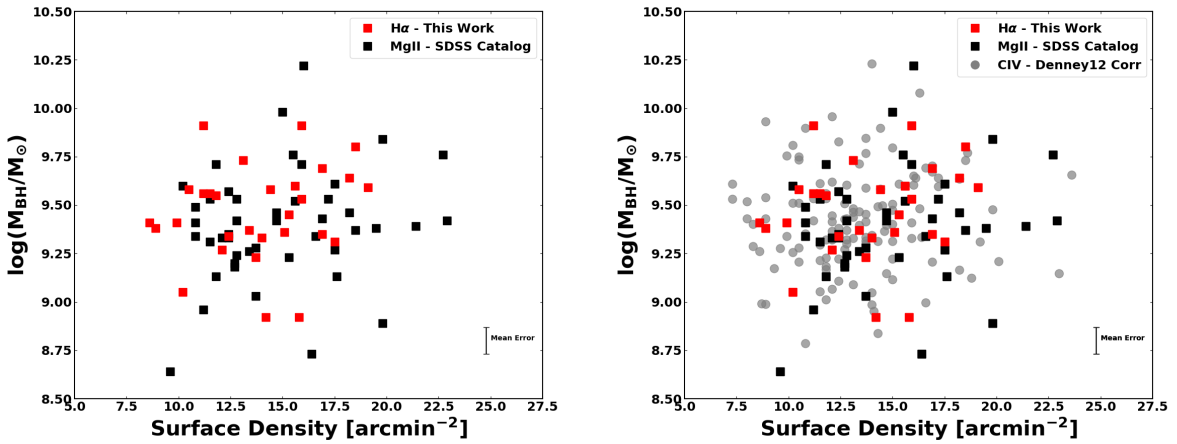


Figure 16. Galaxy surface density as measured by Wylezalek et al. (2013) versus BH mass for the CARLA quasars studied in this paper. The left-hand panel shows the $H\alpha$ -based M_{BH} obtained in this paper (red squares) complemented with CARLA quasars for which Mg II -based masses exist (black squares). In the right-hand panel we have added the C IV -based M_{BH} corrected following the Denney (2012) rehabilitation method (see Section 4.1) in order to obtain the largest sample of CARLA quasars having both accurate M_{BH} and density measurements.

5.3 Does Black Hole Mass Correlate with Environment?

The main motivation for the CARLA project was to systematically study the environments of radio-loud AGN (radio galaxies and radio-loud quasars) at high redshifts (Galametz et al. 2012; Wylezalek et al. 2013; Hatch et al. 2014). One

of the major results from this project was a clear excess in the number of (projected) galaxy counts for CARLA sources compared to carefully constructed control samples of radio-quiet quasars and inactive galaxies of similar stellar mass. Hatch et al. (2014) showed a 4σ significance effect that radio-loud AGN from CARLA reside in denser environments com-

pared to the control samples. The environmental parameter used in this study is, by necessity, defined as the surface density of color-selected galaxies measured within a radius of 1 arcminute (~ 0.5 Mpc at $1.3 < z < 3.2$) away from the CARLA quasars. The redshift accuracy of the color-selection is not very high, but by analyzing a large sample the effects of for- and background interlopers are expected to average out. Moreover, Wylezalek et al. (2013) showed that the overdensities are centered on the radio-loud AGN, and that the overdensity distribution is similar for the type 1 (i.e. radio quasars) and type 2 (i.e. radio galaxies) radio-loud AGN. The fact that the environmental measure does not correlate with any of the radio properties of the sample (radio size, luminosity or spectral index), led Hatch et al. (2014) to the conclusion that it is the triggering of the radio jets that somehow depends on the environment of the host galaxies. It has been suggested that denser environments are conducive to higher merger rates between galaxies and thus of their BHs. This will in turn increase BH spins that are needed to launch powerful jets. At the same time, the enhanced mergers or gas inflow rates in denser environments lead to higher accretion rates, which boost the luminosity of these active BHs. One must be careful, however, in drawing such conclusion, as an alternative explanation could be that radio jets propagating through a denser medium have a higher working surface, and may therefore be more easily detected in radio surveys.

The existence of a strong $M_{\text{BH}} - \sigma_*$ relation at the present-day demonstrates that at some point in their evolution, BH masses began to correlate with galaxy bulge masses. Because the most massive SMBHs locally are furthermore often found in the massive central galaxies in galaxy clusters, we also expect an (albeit indirect) correlation between environment and BH mass. The CARLA project traces some of the most massive SMBHs at high redshift that are found in, on average, high density environments suggestive of (proto)clusters of galaxies (Wylezalek et al. 2013; Overzier 2016). This sample therefore offers a unique chance to investigate at what epochs the correlation between BH mass and environment may have been established. Hatch et al. (2014) tried to address this question by analysing if radio-loud quasars from CARLA with more massive SMBHs are found in denser environments. Although a weak correlation was found using the ~ 200 quasars studied by CARLA (Spearman rank coefficient ρ of 0.16 with p -value of 0.02), that study was based on C IV BH mass measurements.

We have shown that C IV-based BH masses are less reliable than those based on H α . In order to further investigate whether BH mass correlates with local galaxy density at $z \sim 2 - 3$, we plot in the left-hand panel of Figure 16 the H α -based M_{BH} determined in Section 4.1 against the galaxy surface densities for the 30 CARLA quasars observed as part of this work (red squares). In order to increase the statistics, we have also added those CARLA quasars for which reliable Mg II-based M_{BH} exists from SDSS (39 objects; black squares). The left panel shows that there is indeed a possible trend for more massive SMBHs to be found in denser environments, with a Spearman rank correlation of $\rho = 0.16$ if we combine the H α and Mg II data, but it is not significant ($p = 0.16$). When we substitute the H α -based masses for their original C IV-based masses used in Hatch et al.

(2014), the correlation coefficient is somewhat weaker than before, but again with a high $p = 0.21$ (not shown). Despite the fact that we do not find conclusive evidence for a positive correlation between BH mass and environment, we have shown that the distribution of BH masses changes significantly between the C IV- and H α -based measurements (Figure 7). This shows that this kind of analysis based on H α should ideally be extended to the full CARLA sample before we can make a proper assessment of the question whether BH mass correlates with environment. Although the sample size of H α -based BH masses for CARLA quasars is currently very limited, a possible improvement is to use the C IV-rehabilitation method by Denney (2012) applied to the SDSS spectra of all CARLA quasars. As shown in Fig. 8), this offers a substantial improvement over the direct C IV-based measurements (0.24 dex with almost no systematic offset). We were able to apply the rehabilitation method to 125 additional CARLA quasars, and added the results to the right-hand panel of Figure 16. Using this increased sample size of 199 quasars (H α , Mg II, or C IV-rehabilitated M_{BH}), we find that the (Wylezalek et al. 2013) surface densities and M_{BH} still correlate only weakly with $\rho = 0.12$ and $p = 0.1$.

Despite the improvements in BH mass estimates that our analysis has been able to offer, a serious remaining limitation of our analysis is that the surface density parameters estimated from the CARLA data suffer from projection effects and large redshift uncertainties. Besides accurate BH masses, improved density measurements should thus also be obtained in order to perform the kind of analysis presented in Hatch et al. (2014) and Figure 16 in the most accurate way possible. This will be the subject of future work.

6 CONCLUSIONS

We analyzed a sample of 30 high-redshift quasars from the CARLA survey. We obtained spectroscopic observations with VLT/SINFONI in the K -band in order to estimate their BH masses and study the correlation between BH mass and other physical properties. We used H α to obtain more accurate BH masses and to estimate accretion rates and BH growth times. We then studied whether the properties of the quasars correlate with radio power and with the large-scale environment. The results are summarized as follows:

- (i) We used the H α line (redshifted to the K -band) to estimate more accurate BH masses for the quasars in the CARLA sample. The results show a large scatter (0.35 dex) and systematic offset (0.2 dex) between the masses obtained using H α and previously available C IV-based masses from SDSS spectra. Although the average M_{BH} increases when using H α , it also reduced the number of objects having M_{BH} estimates of $\sim 10^{10} M_{\odot}$ when using C IV.
- (ii) We used various recent methods proposed for rehabilitating measurements based on C IV. We analyzed which best reproduce the BH masses obtained based on H α . We found that the methods of Denney (2012) and Coatman et al. (2017) reduce significantly the scatter and systematic offsets between the M_{BH} determinations, while the methods of Park et al. (2017) and Runnoe et al. (2013) do not reproduce the $M_{\text{BH}}(\text{H}\alpha)$ very well, resulting in a systematic offset.
- (iii) We calculated L/L_{Edd} for our sample and find a range of 0.04-0.64, and used this to estimate the typical growth

times for each quasar using basic assumptions for accretion efficiency, seed mass, and duty cycle. Although the median growth time of the sample is shorter than the age of the universe at the redshifts of the quasars, nearly half of the objects have growth times longer than the cosmic age.

(iv) We compared the radio power of our quasars with all measured quantities, i.e. M_{BH} , $\text{FWHM}(\text{H}\alpha)$, L_{5100} , L/L_{Edd} , t_{grow} , and C IV blueshift. Our results show an anti-correlation between the C IV blueshift and radio power. This trend is consistent with the known effect that C IV blueshifts are larger for higher luminosity and higher L/L_{Edd} quasars.

(v) We explored various simple evolutionary tracks for the BH growth history of CARLA BHs, finding that a scenario in which the BH first accretes at or near the Eddington limit until $z \sim 6-8$ and then switches to a slower accretion rate given by the L/L_{Edd} measured at $z \sim 2-3$ perhaps best explains the observations. In this scenario, the CARLA quasars could be direct descendants of the SMBHs observed in quasars at $z \sim 6-8$. In order to be also consistent with the empirical upper limit of $M_{\text{BH}} \sim 2 \times 10^{10} M_{\odot}$, many of the CARLA quasars will have to lower their measured accretion rates further toward lower redshifts. In any case, given their high M_{BH} at $z \sim 2-3$, we predict that their SMBHs will be found near the upper end of the local $M_{\text{BH}} - \sigma_*$ relation by $z \sim 0$.

(vi) In order to shed new light on the origin of the local $M_{\text{BH}} - \sigma_*$ relation, we repeated the analysis of Hatch et al. (2014) to study whether BH masses are correlated with environment already at $z \sim 2-3$. We use the $\text{H}\alpha$ -based BH masses and galaxy surface density measurements from the CARLA survey as a proxy for environment. We find a weak correlation at very low significance. In future work, it will be important to extend the sample size of $\text{H}\alpha$ -based M_{BH} , and reduce the uncertainty of the environmental measurements.

ACKNOWLEDGMENTS

We thank Andrew Humphrey, Nicole Nesvadba and the anonymous referee for very helpful comments. This study was financed in part by the Coordenação de Aperfeiçoamento de Pessoal de Nível Superior - Brasil (CAPES) - Finance Code 001. We are grateful for financial support from the Conselho Nacional de Desenvolvimento Científico e Tecnológico, CAPES (grant 88881.156185/2017-01) and the São Paulo Research Foundation (FAPESP; grants 2017/01461-2 and 2018/02444-7). YTL was supported by CNPq grant 400738/2014-7. The work of DS was carried out at the Jet Propulsion Laboratory, California Institute of Technology, under a contract with NASA. Based on observations collected at the European Organisation for Astronomical Research in the Southern Hemisphere under ESO programmes 089.B-0433(A), 090.B-0674(A), 091.B-0112(A), 092.B-0565(A), 093.B-0084(A), 094.B-0105(A), and 095.B-0323(A).

REFERENCES

Assef, R. J., Denney, K. D., Kochanek, C. S., et al. 2011, *ApJ*, 742, 93
 Avara M. J., McKinney J. C., Reynolds C. S., 2016, *MNRAS*, 462, 636

Bachev, R., Marziani, P., Sulentic, J. W., et al. 2004, *ApJ*, 617, 171
 Bañados, E., Venemans, B. P., Mazzucchelli, C., et al. 2018, *Nature*, 553, 473
 Baskin, A., & Laor, A. 2005, *MNRAS*, 356, 1029
 Begelman, M. C., Volonteri, M., & Rees, M. J. 2006, *MNRAS*, 370, 289
 Bentz, M. C., Peterson, B. M., Pogge, R. W., Vestergaard, M., & Onken, C. A. 2006, *ApJ*, 644, 133
 Bentz, M. C., Peterson, B. M., Pogge, R. W., & Vestergaard, M. 2009, *ApJ*, 694, L166
 Boroson, T. A., & Green, R. F. 1992, *ApJS*, 80, 109
 Cattaneo, A. 2002, *MNRAS*, 333, 353
 Chiaberge, M., Gilli, R., Lotz, J. M., & Norman, C. 2015, *ApJ*, 806, 147
 Coatman, L., Hewett, P. C., Banerji, M., et al. 2017, *MNRAS*, 465, 2120
 Coatman, L., Hewett, P. C., Banerji, M., & Richards, G. T. 2016, *MNRAS*, 461, 647
 Cooke, E. A., Hatch, N. A., Rettura, A., Wylezalek, D., Galametz, A., Stern, D., Brodwin, M., Muldrew, S. L., Almaini, O., Conselice, C. J., Eisenhardt, P. R., Hartley, W. G., Jarvis, M., Seymour, N., Stanford, S. A. 2015, *MNRAS*, 452, 2318
 De Breuck C., Röttgering H., Miley G., van Breugel W., Best P., 2000, *A&A*, 362, 519
 De Breuck, C., van Breugel, W., Röttgering, H., et al. 2001, *AJ*, 121, 1241
 Denney, K. D. 2012, *ApJ*, 759, 44
 Dietrich, M., Mathur, S., Grupe, D., & Komossa, S. 2009, *ApJ*, 696, 1998
 Drouart G., et al., 2014, *A&A*, 566, A53
 Eisenhauer, F., Abuter, R., Bickert, K., et al. 2003, *Proc. SPIE*, 4841, 1548
 Elvis M., et al., 1994, *ApJS*, 95, 1
 Falkendal T., et al., 2019, *A&A*, 621, A27
 Fender R., Belloni T., 2012, *Sci*, 337, 540
 Ferrarese, L., & Merritt, D. 2000, *ApJ*, 539, L9
 Galametz, Audrey; Stern, Daniel; De Breuck, Carlos; Hatch, Nina; Mayo, Jack; Miley, George; Rettura, Alessandro; Seymour, Nick; Stanford, S. Adam; Vernet, JoAñil, 2012, *MNRAS*, 147, 169G
 Gallerani, S., Fan, X., Maiolino, R. & Pacucci, F. Physical Properties of the First Quasars. *Public., Astron. Soc. Aust.* 34, e022 (2017). DOI 10.1017/pasa.2017.14. 1702.06123.
 Gebhardt, K., Bender, R., Bower, G., et al. 2000, *ApJ*, 539, L13
 Greene, J. E., & Ho, L. C. 2005, *ApJ*, 630, 122
 Gu, M., Cao, X., & Jiang, D. R. 2001, *MNRAS*, 327, 1111
 Hardcastle, M. J., Williams, W. L., Best, P. N., et al. 2019, *A&A*, 622, A12
 Hatch, N. A., Wylezalek, D., Kurk, J. D., et al. 2014, *MNRAS*, 445, 280
 Heckman, T. M., & Best, P. N. 2014, *ARA&A*, 52, 589
 Hewett, P. C., Warren, S. J., Leggett, S. K., & Hodgkin, S. T. 2006, *MNRAS*, 367, 454
 Inayoshi K., Haiman Z., 2016, *ApJ*, 828, 110
 Jun, H. D., Im, M., Kim, D., & Stern, D. 2017, *ApJ*, 838, 41
 Kaspi, S., Smith, P. S., Netzer, H., et al. 2000, *ApJ*, 533, 631
 Kaspi, S., Maoz, D., Netzer, H., et al. 2005, *ApJ*, 629, 61
 King, A. R., Pringle, J. E., West, R. G., & Livio, M. 2004, *MNRAS*, 348, 111
 King A., 2016, *MNRAS*, 456, L109
 Kormendy, J., & Ho, L. C. 2013, *ARA&A*, 51, 511
 Lacy, M., Laurent-Muehleisen, S. A., Ridgway, S. E., Becker, R. H., & White, R. L. 2001, *ApJ*, 551, L17
 Laor, A. 2000, *ApJ*, 543, L111
 Magliocchetti, M., Maddox, S. J., Hawkins, E., et al. 2004, *MNRAS*, 350, 1485

- Magorrian, J., Tremaine, S., Richstone, D., et al. 1998, *AJ*, 115, 2285
- Marconi, A., Risaliti, G., Gilli, R., et al. 2004, *MNRAS*, 351, 169
- Martini, P., & Schneider, D. P. 2003, *ApJ*, 597, L109
- Marziani, P., Sulentic, J. W., Zwitter, T., Dultzin-Hacyan, D., & Calvani, M. 2001, *ApJ*, 558, 553
- Marziani, P., Sulentic, J. W., Plauchu-Frayn, I., & del Olmo, A. 2013, *A&A*, 555, A89
- Mazzucchelli C., et al., 2017, *ApJ*, 849, 91
- McAlpine, S., Bower, R. G., Rosario, D. J., et al. 2018, *MNRAS*, 481, 3118
- McConnell, N. J., Ma, C.-P., Gebhardt, K., et al. 2011, *Nature*, 480, 215
- McGill, K. L., Woo, J.-H., Treu, T., & Malkan, M. A. 2008, *ApJ*, 673, 703
- McLure, R. J., & Dunlop, J. S. 2001, *MNRAS*, 327, 199
- Meier D. L., 2001, *ApJ*, 548, L9
- Merloni, A. 2004, *MNRAS*, 353, 1035
- Metcalfe, R. B., & Magliocchetti, M. 2006, *MNRAS*, 365, 101
- Modigliani, A., Hummel, W., Abuter, R., et al. 2007, *arXiv:astro-ph/0701297*
- Mortlock, D. J., Warren, S. J., Venemans, B. P., et al. 2011, *Nature*, 474, 616
- Netzer, H., Lira, P., Trakhtenbrot, B., Shemmer, O., & Cury, I. 2007, *ApJ*, 671, 1256
- Nesvadba, N. P. H., De Breuck, C., Lehnert, M. D., et al. 2011, *A&A*, 525, A43
- Noirot, Gaël; Vernet, Joël; De Breuck, Carlos; Wylezalek, Dominika; Galametz, Audrey; Stern, Daniel; Mei, Simona; Brodwin, Mark; Cooke, Elizabeth A.; Gonzalez, Anthony H.; Hatch, Nina A.; Rettura, Alessandro; Stanford, Spencer Adam, 2016, *MNRAS*, 830, 90
- Noirot, Gaël; Stern, Daniel; Mei, Simona; Wylezalek, Dominika; Cooke, Elizabeth A.; De Breuck, Carlos; Galametz, Audrey; Hatch, Nina A.; Vernet, Joël; Brodwin, Mark; Eisenhardt, Peter; Gonzalez, Anthony H.; Jarvis, Matt; Rettura, Alessandro; Seymour, Nick; Stanford, S. A., 2018, *ApJ*, 859, 38
- Orsi Á. A., Fanidakis N., Lacey C. G., Baugh C. M., 2016, *MNRAS*, 456, 3827
- Overzier R. A., Röttgering H. J. A., Rengelink R. B., Wilman R. J., 2003, *A&A*, 405, 53
- Overzier, R., 2016, *ApJ*, 24, 14
- Park, D., Woo, J.-H., Treu, T., et al. 2012, *ApJ*, 747, 30
- Park, D., Woo, J.-H., Denney, K. D., & Shin, J. 2013, *ApJ*, 770, 87
- Park, D., Barth, A. J., Woo, J.-H., et al. 2017, *ApJ*, 839, 93
- Peterson, B. M.; Ferrarese, L.; Gilbert, K. M.; Kaspi, S.; Malkan, M. A.; Maoz, D.; Merritt, D.; Netzer, H.; Onken, C. A.; Pogge, R. W.; Vestergaard, M.; Wandel, A. 2004, *ApJ*, 613, 682
- Peterson, B. M. 2014, *Space Sci. Rev.*, 183, 253
- Proga D., Stone J. M., Drew J. E., 1998, *MNRAS*, 295, 595
- Regan J. A., Downes T. P., Volonteri M., Beckmann R., Lupi A., Trebitsch M., Dubois Y., 2019, *MNRAS*, 486, 3892
- Retana-Montenegro, E., & Röttgering, H. J. A. 2017, *A&A*, 600, A97
- Richards G. T., et al., 2006, *ApJS*, 166, 470
- Richards G. T., et al., 2011, *AJ*, 141, 167
- Runnoe, J. C., Brotherton, M. S., Shang, Z., & DiPompeo, M. A. 2013, *MNRAS*, 434, 848
- Sabater, J., Best, P. N., Hardcastle, M. J., et al. 2019, *A&A*, 622, A17
- Salpeter, E. E. 1964, *ApJ*, 140, 79
- Schulze, A., Done, C., Lu, Y., Zhang, F., & Inoue, Y. 2017, *ApJ*, 849, 4
- Shen, Y., & Ho, L. C. 2014, *Nature*, 513, 210
- Shen, Y., Greene, J. E., Strauss, M. A., Richards, G. T., & Schneider, D. P. 2008, *ApJ*, 680, 169-190
- Shen, Y., Richards, G. T., Strauss, M. A., et al. 2011, *ApJS*, 194, 45
- Schaye, J., Crain, R. A., Bower, R. G., et al. 2015, *MNRAS*, 446, 521
- Schneider, D. P., Richards, G. T., Hall, P. B., et al. 2010, *VizieR Online Data Catalog*, 7260,
- Stern, J., & Laor, A. 2013, *MNRAS*, 431, 836
- Sulentic, J. W., & Marziani, P. 1999, *ApJ*, 518, L9
- Trakhtenbrot, B., & Netzer, H. 2012, *MNRAS*, 427, 3081
- Uchiyama, H., Toshikawa, J., Kashikawa, N., et al. 2018, *PASJ*, 70, S32
- Vanden Berk, D. E., Richards, G. T., Bauer, A., et al. 2001, *AJ*, 122, 549
- Vestergaard, M., & Peterson, B. M. 2006, *ApJ*, 641, 689
- Volonteri, M., Sikora, M., & Lasota, J.-P. 2007, *ApJ*, 667, 704
- Volonteri, M., Lodato, G., & Natarajan 2008, *MNRAS*, 383, 1079
- Wang, J.-G., Dong, X.-B., Wang, T.-G., et al. 2009, *ApJ*, 707, 1334
- Wu, X.-B., Wang, F., Fan, X., et al. 2015, *Nature*, 518, 512
- Wylezalek, D., Galametz, A., Stern, D., et al. 2013, *ApJ*, 769, 79
- Wylezalek, D., Vernet, J., De Breuck, C., et al. 2014, *ApJ*, 786, 17
- Xiong, D.-r., Zhang, X., Zheng, Y.-g., et al. 2013, *Chinese Astron. Astrophys.*, 37, 28
- Zafar, T., Møller, P., Watson, D., et al. 2015, *A&A*, 584, A100
- Zubovas K., King A., 2012, *ApJ*, 745, L34

APPENDIX A: H α AND C IV EMISSION LINE FITS

This paper has been typeset from a $\text{\TeX}/\text{\LaTeX}$ file prepared by the author.

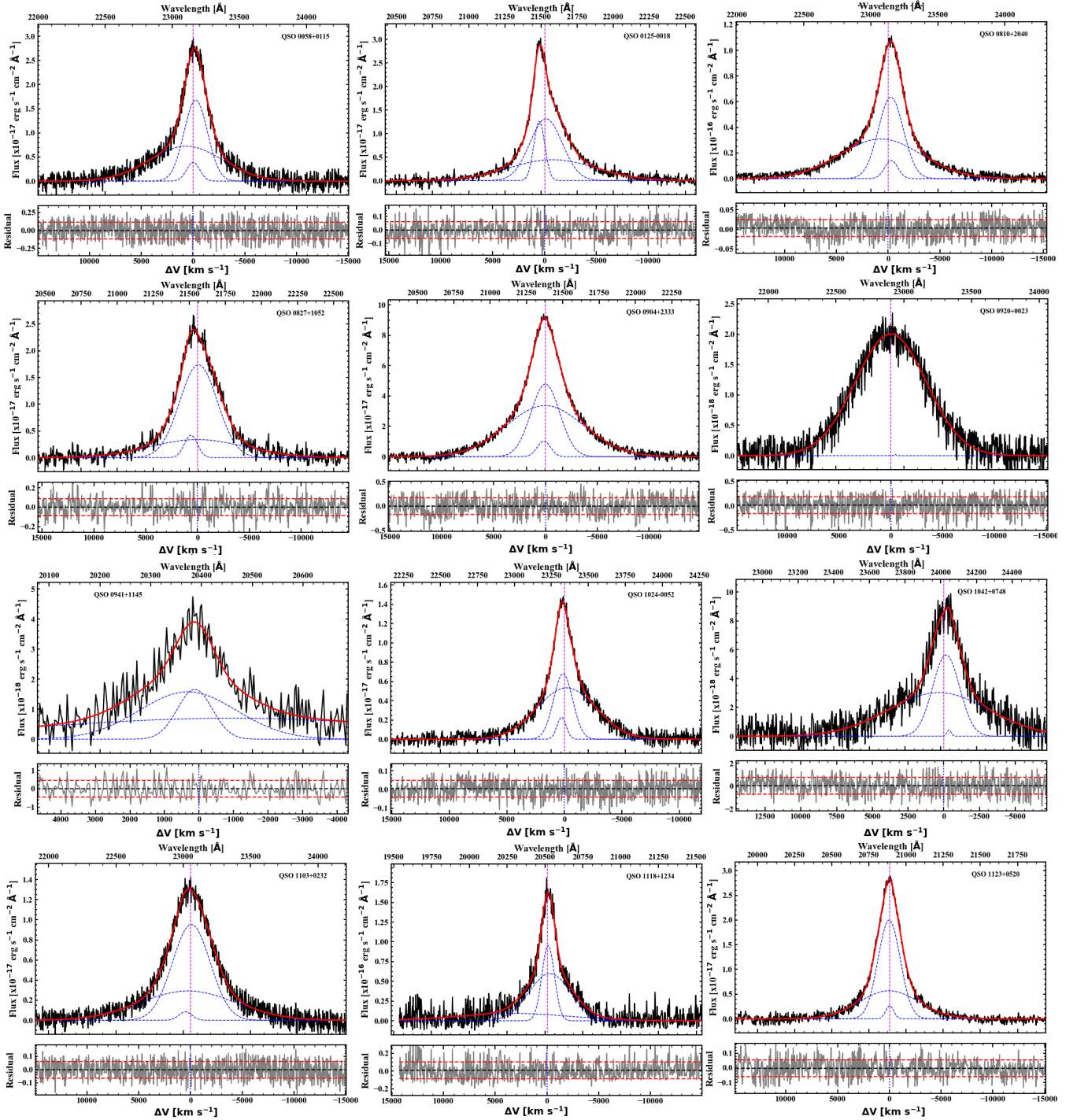


Figure A1. $H\alpha$ fit for the entire CARLA sample. Top panels show the observed spectrum in black, the best fit components in dashed blue, and the sum of all components in red. Bottom panels show the residual from the subtraction of the best fit from the observed spectrum in grey. The dashed black line shows the zero-level and the dashed red lines the standard deviation. Vertical dashed lines show the center of the line.

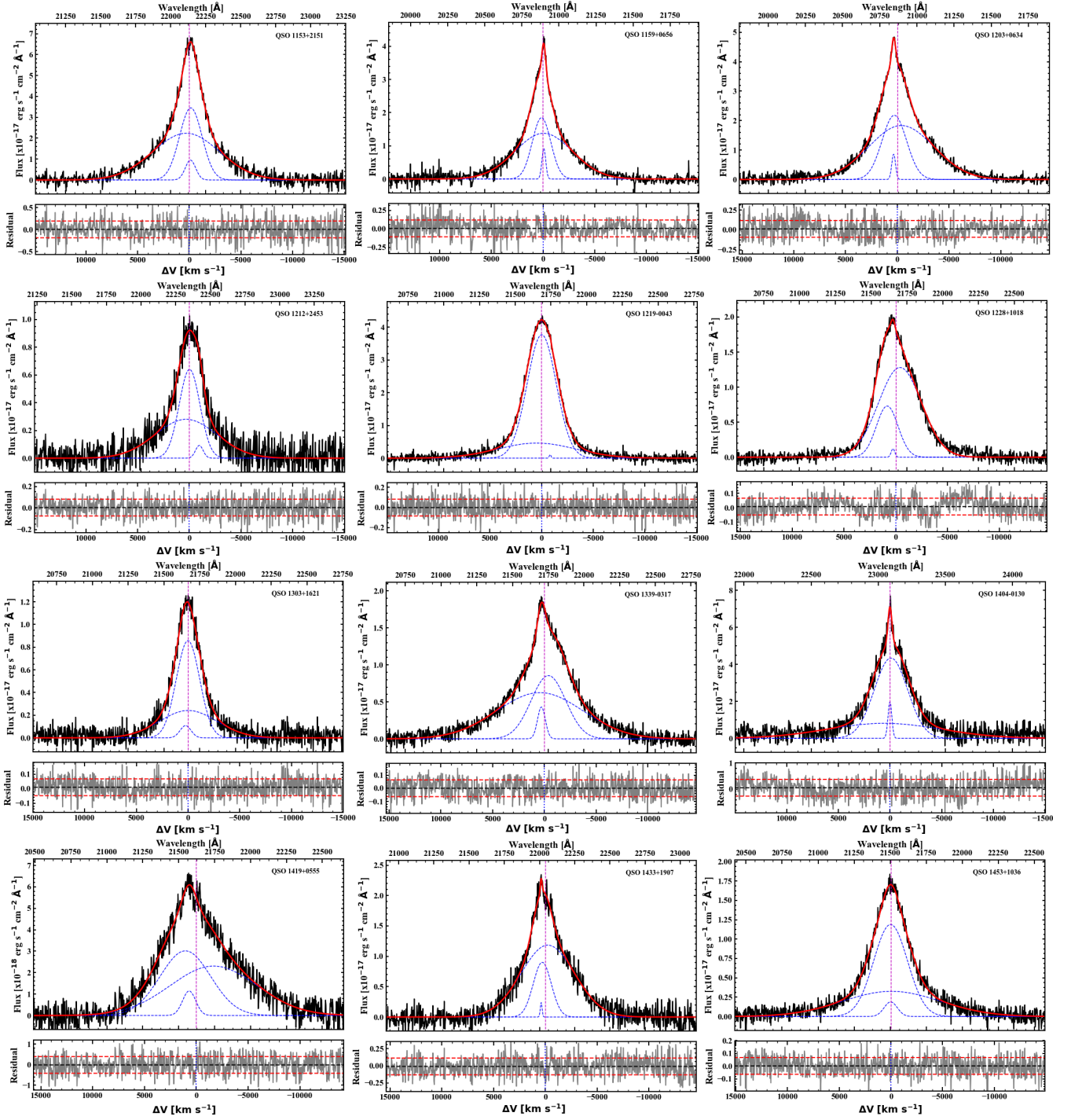


Figure A2. Continuation of Figure A1.

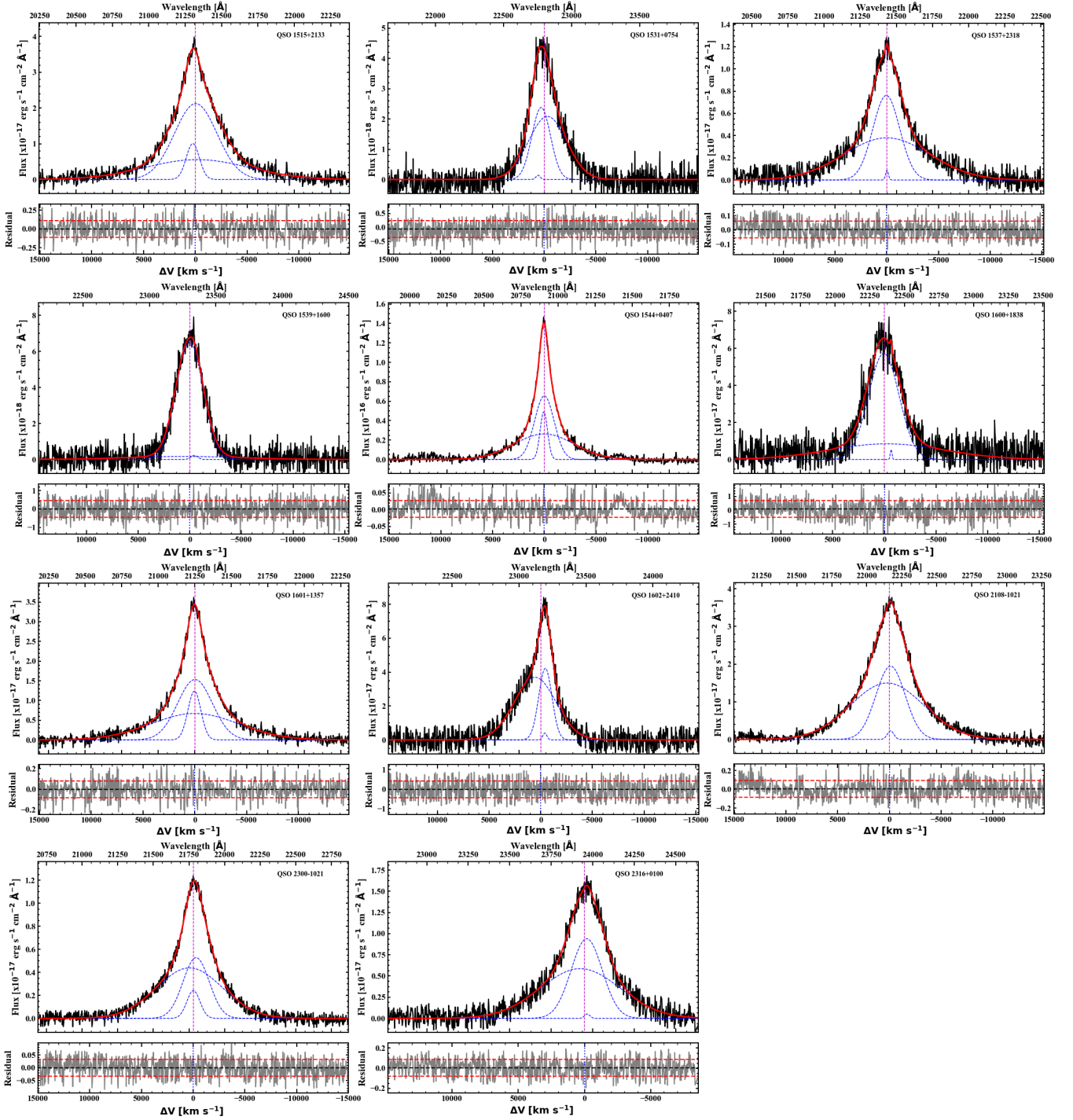


Figure A3. Continuation of Figure A1.

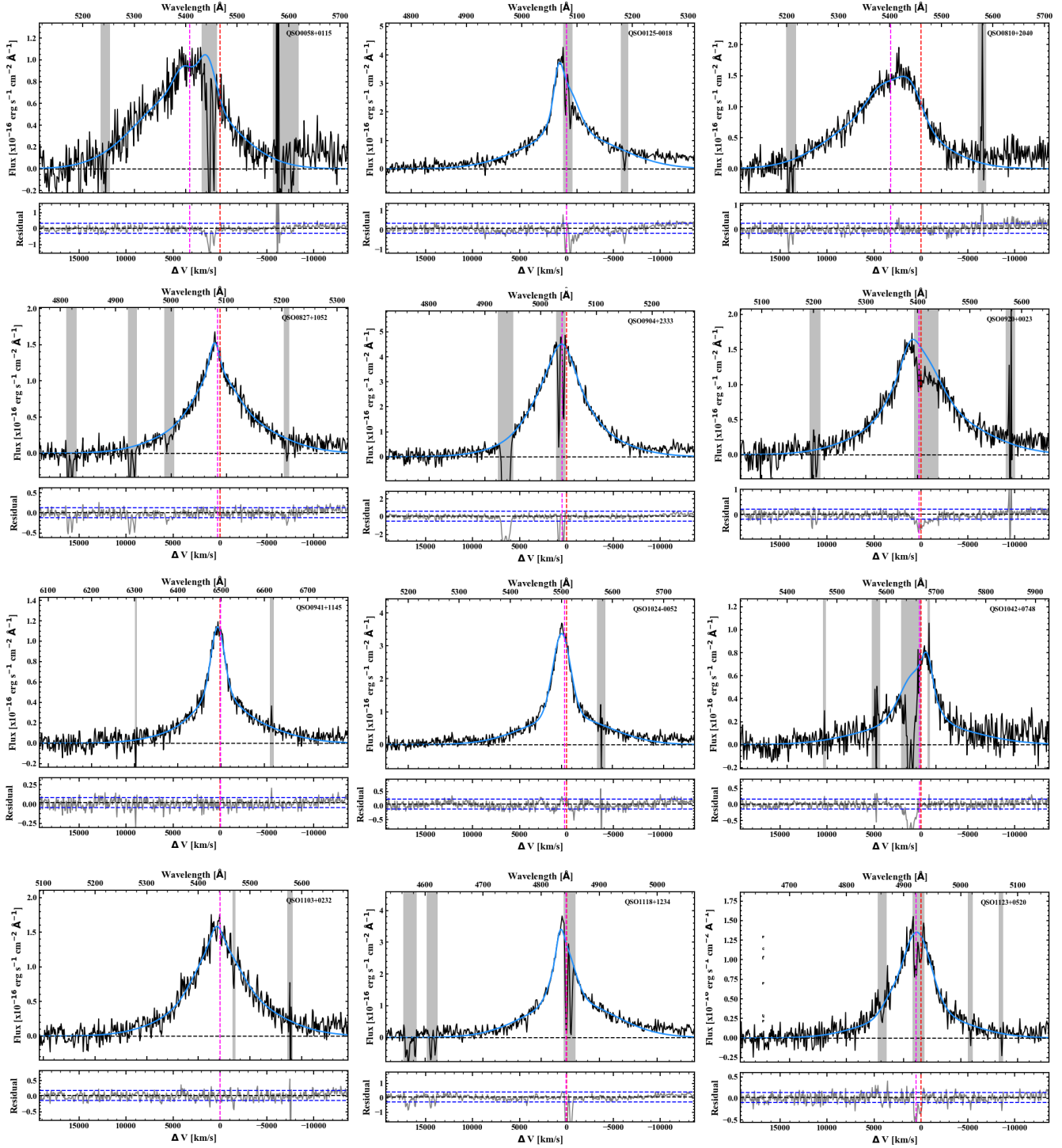


Figure A4. C IV fit for the entire CARLA sample. Top panels show the observed spectrum in black and the sum of all fitted components in blue. The thick horizontal blue line shows the FWHM of C IV. Bottom panels show the residual from the subtraction of the best fit from the observed spectrum in grey. The dashed black line shows the zero-level and the dashed blue lines the standard deviation. In each panel, the vertical red dashed line shows the systematic velocity based on H α , while the magenta dashed line shows the centroid of C IV. Vertical grey shaded regions indicate wavelength intervals that were masked in the fitting process.

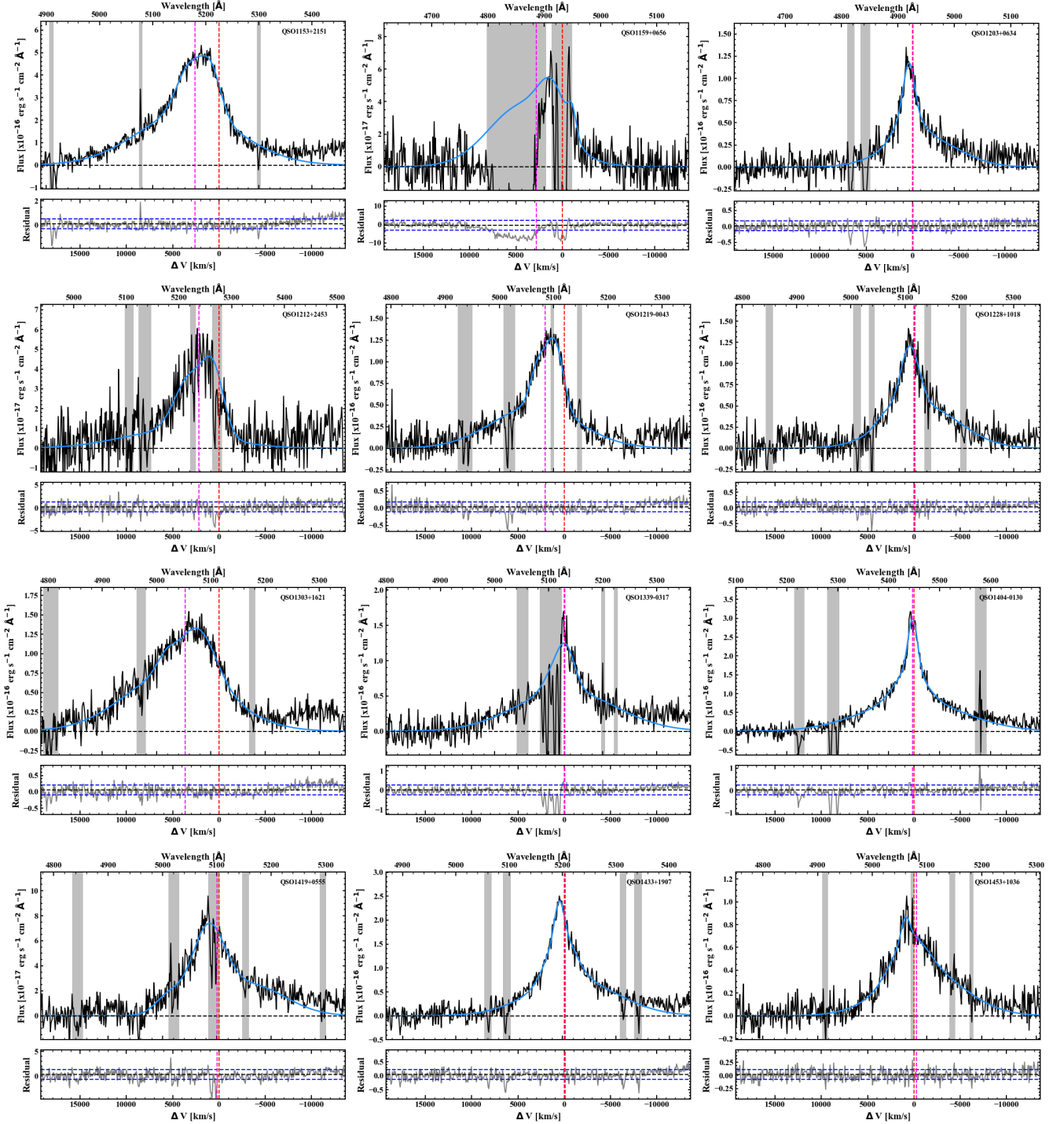


Figure A5. Continuation of Figure A4.

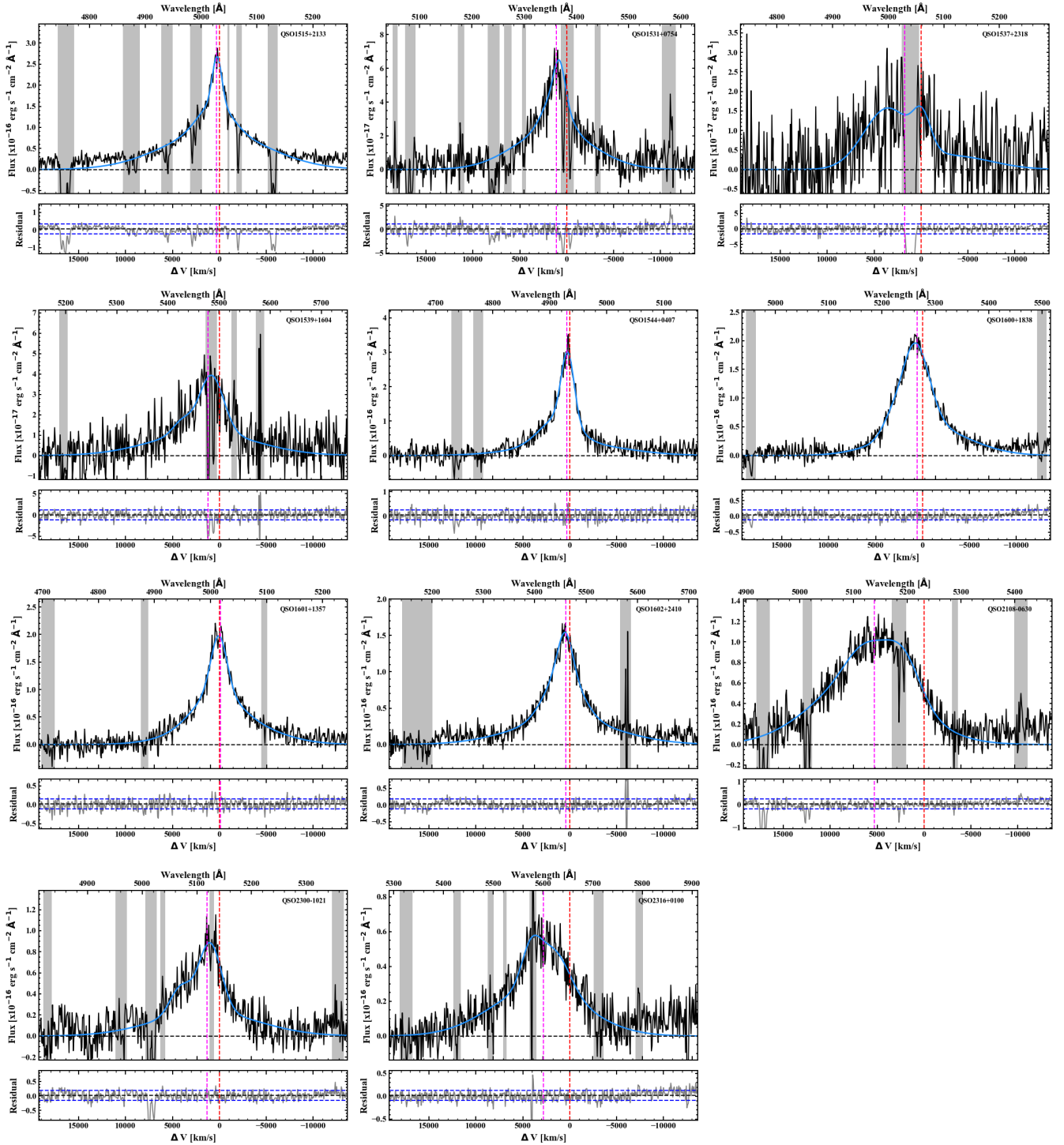


Figure A6. Continuation of Figure A4.