



Universiteit
Leiden
The Netherlands

X-shooter survey of disk accretion in Upper Scorpius. I. Very high accretion rates at age > 5 Myr

Manara, C. F.; Natta, A.; Rosotti, G.P.; Alcalá, J.M.; Nisini, B.; Lodato, G.; ... ; Zari, E.

Citation

Manara, C. F., Natta, A., Rosotti, G. P., Alcalá, J. M., Nisini, B., Lodato, G., ... Zari, E. (2020). X-shooter survey of disk accretion in Upper Scorpius. I. Very high accretion rates at age > 5 Myr. *Astronomy & Astrophysics*, 639, A58. doi:10.1051/0004-6361/202037949

Version: Accepted Manuscript

License: [Leiden University Non-exclusive license](#)

Downloaded from: <https://hdl.handle.net/1887/3134116>

Note: To cite this publication please use the final published version (if applicable).

X-Shooter survey of disk accretion in Upper Scorpius

I. Very high accretion rates at age >5 Myr^{*}

C.F. Manara^{1, **}, A. Natta², G.P. Rosotti³, J.M. Alcalá⁴, B. Nisini⁵, G. Lodato⁶, L. Testi^{1, 7}, I. Pascucci⁸,
L. Hillenbrand⁹, J. Carpenter¹⁰, A. Scholz¹¹, D. Fedele⁷, A. Frasca¹², G. Mulders¹³, E. Rigliaco¹⁴,
C. Scardoni^{6, 15}, and E. Zari¹⁶

¹ European Southern Observatory, Karl-Schwarzschild-Strasse 2, 85748 Garching bei München, Germany
e-mail: cmanara@eso.org

² School of Cosmic Physics, Dublin Institute for Advanced Studies, 31 Fitzwilliams Place, Dublin 2, Ireland

³ Leiden Observatory, Leiden University, PO Box 9513, 2300 RA Leiden, The Netherlands

⁴ INAF – Osservatorio Astronomico di Capodimonte, via Moiariello 16, 80131 Napoli, Italy

⁵ INAF – Osservatorio Astronomico di Roma, via di Frascati 33, 00078 Monte Porzio Catone, Italy

⁶ Dipartimento di Fisica, Università degli Studi di Milano, Via Giovanni Celoria 16, I-20133 Milano, Italy

⁷ INAF – Osservatorio Astrofisico di Arcetri, L.go E. Fermi 5, 50125 Firenze, Italy

⁸ Lunar and Planetary Laboratory, The University of Arizona, Tucson, AZ 85721, USA

⁹ California Institute of Technology, 1200 East California Blvd, Pasadena, CA 91125, USA

¹⁰ Joint ALMA Observatory, Avenida Alonso de Córdova 3107, Vitacura, Santiago, Chile

¹¹ SUPA, School of Physics & Astronomy, University of St Andrews, North Haugh, St Andrews, KY16 9SS, United Kingdom

¹² INAF – Osservatorio Astrofisico di Catania, via S. Sofia, 78, 95123 Catania, Italy

¹³ Department of the Geophysical Sciences, The University of Chicago, 5734 South Ellis Avenue, Chicago, IL 60637, USA

¹⁴ INAF – Osservatorio Astronomico di Padova, Vicolo dell'Osservatorio 5, I-35122, Padova, Italy

¹⁵ Institute of Astronomy, University of Cambridge, Madingley Road, Cambridge CB3 0HA, UK

¹⁶ Max Planck Institute for Astronomy, Königstuhl 17, 69117 Heidelberg, Germany

Received Mar 13, 2020; accepted -

ABSTRACT

Determining the mechanisms that drive the evolution of protoplanetary disks is a necessary step to understand how planets form. Here we measure the mass accretion rate for young stellar objects with disks at age >5 Myr, a critical test for the current models of disk evolution. We present the analysis of the spectra of 36 targets in the ~5-10 Myr old Upper Scorpius star-forming regions for which disk masses were measured with ALMA. We find that the mass accretion rates in this sample of old but still survived disks are similarly high as those of the younger (~1 – 3 Myr old) star-forming regions of Lupus and Chamaeleon I, when considering the dependence on stellar and disk mass. In particular, several disks show high mass accretion rates $\geq 10^{-9} M_{\odot}/\text{yr}$ while having low disk masses. Furthermore, the median values of the measured mass accretion rates in the disk mass ranges where our sample is complete at a level ~60 – 80% are compatible in these three regions. At the same time, the spread of mass accretion rates at any given disk mass is still >0.9 dex even at age >5 Myr. These results are in contrast with simple models of viscous evolution, which would predict that the values of the mass accretion rate diminish with time, and a tighter correlation with disk mass at age >5 Myr. Similarly, simple models of internal photoevaporation cannot reproduce the observed mass accretion rates, while external photoevaporation might explain the low disk masses and high accretion rates. A partial possible solution to the discrepancy with the viscous models is that the gas-to-dust ratio of the disks at ~5-10 Myr is significantly different and higher than the canonical 100, as suggested by some dust and gas disk evolution models. The results shown here require the presence of several inter-playing processes, such as detailed dust evolution, external photoevaporation and possibly MHD winds, to explain the secular evolution of protoplanetary disks.

Key words. Accretion, accretion disks - Protoplanetary disks - Stars: pre-main sequence - Stars: variables: T Tauri, Herbig Ae/Be

1. Introduction

The study of the evolution of planet-forming disks around young stars and their ability and modality to form planets strongly relies on describing how the main disk properties evolve with time and depend on the properties of the central star.

From a theoretical view-point, the evolution of the disk and its dispersal is commonly described as an interplay between ac-

cretion of material through the disk and onto the central star (e.g., Hartmann et al. 2016), dispersal of material through winds (e.g., Ercolano & Pascucci 2017), and internal processes leading to grain growth and planet formation (e.g., Testi et al. 2014; Morbidelli & Raymond 2016). On top of that, external processes such as external photoevaporation and dynamical interactions, can also affect the evolution of disks (e.g., Winter et al. 2018).

A number of disk properties, such as the mass accretion rate onto the central star (\dot{M}_{acc}), the mass loss rate in winds, and the disk mass (M_{disk}), can now be measured in a large number of objects in different evolutionary state. This is made possible

* Based on observations collected at the European Southern Observatory under ESO programmes 097.C-0378(A) and 0101.C-0866(A).

** ESO Fellow

thanks to the availability of sensitive optical spectrographs, such as the X-Shooter instrument on the Very Large Telescope (VLT), and millimeter interferometers, in particular the Atacama Large Millimeter and sub-millimeter Array (ALMA).

It is the combination of these instruments that allowed us to establish that the disk mass and \dot{M}_{acc} are correlated (Manara et al. 2016b; Mulders et al. 2017). This relation is predicted by the viscous evolution model (e.g., Lynden-Bell & Pringle 1974; Hartmann et al. 1998; Dullemond et al. 2006; Lodato et al. 2017; Mulders et al. 2017; Rosotti et al. 2017). However, the correlation measured in the young stars populations of the ~ 1 -3 Myr old Lupus and Chamaeleon I star-forming regions is in line with the expectations of viscous evolution theory only if the typical viscous timescales have a large spread of values and are typically of the order of the age of the region ~ 1 Myr (Lodato et al. 2017; Mulders et al. 2017). Such long viscous timescale is needed to explain the observed scatter of the relation (~ 1 dex), much larger than what is predicted using shorter viscous timescales (e.g., Dullemond et al. 2006; Mulders et al. 2017; Manara et al. 2019). Assuming purely viscous evolution, a tight correlation with a much smaller spread of \dot{M}_{acc} at any M_{disk} is expected at older ages > 5 Myr. At this time the spread in this relation should be dominated by uncertainties on the \dot{M}_{acc} estimates if viscous accretion is the driver of the evolution of disks.

On the other hand, other processes can also affect the ratio between M_{disk} and \dot{M}_{acc} at different ages. Rosotti et al. (2017) expanded the work of Jones et al. (2012) to show that internal processes, such as internal photoevaporation, planet formation, or the presence of dead zones, would make the $\dot{M}_{\text{acc}}/M_{\text{disk}}$ ratio smaller than what is expected by pure viscous evolution. This was recently confirmed by more detailed description of the evolution of \dot{M}_{acc} and M_{disk} in the case of internal photoevaporation by Somigliana et al. (2020). On the opposite, external photoevaporation would remove material from the disk causing an increase of the $\dot{M}_{\text{acc}}/M_{\text{disk}}$ ratio with respect to pure viscous evolution.

All the aforementioned processes can be critically tested by looking at the $M_{\text{disk}}-\dot{M}_{\text{acc}}$ relation in different samples of young stellar objects at different ages and in different environments. Here we present the results of the first survey of accretion rates in the disk-bearing stars of the ~ 5 -10 Myr old (Pecaut, & Mamajek 2016; Feiden 2016; David et al. 2019) Upper Scorpius star-forming region. Our aim is firstly to establish for the first time the nature of the relation between \dot{M}_{acc} and M_{disk} at ages > 5 Myr and, secondly, to provide a measurement of the typical median values of \dot{M}_{acc} and of the scatter of this relation. The empirical constraints on the time evolution of the $\dot{M}_{\text{acc}}-M_{\text{disk}}$ relation will allow to further constrain how protoplanetary disks evolve.

The paper is structured as follows. Sect. 2 presents the sample selection, observations, and the data reduction procedure. The analysis of the spectra is then presented in Sect. 3, while the results of our analysis are described in Sect. 4. We then discuss our findings in Sect. 5 and outline the conclusions of this work in Sect. 6.

2. Sample, observations, and data reduction

2.1. Sample

We selected our sample starting from the ALMA observations by Barenfeld et al. (2016), which included all the known objects with infrared excess, and therefore a disk, known at the time and with spectral type from G2 to M4.75 (Luhman & Mamajek 2012; Carpenter et al. 2006). Additional candidate members of

the region have been found later on (e.g., Wilkinson et al. 2018). Of the 106 targets observed by Barenfeld et al. (2016), we excluded the 31 “debris/evolved transitional sources”, as they probably represent either young debris disks composed of second-generation dust or amorphous disks which are not the targets of this study, as well as the 22 ALMA non-detections of “primordial” disks. The latter are excluded as their disk masses are lower than those considered in the analysis of this work, as discussed in the following. The values of disk dust masses ($M_{\text{disk,dust}}$) were obtained by Barenfeld et al. (2016) from the millimetre flux assuming a disk temperature dependent on the stellar luminosity and a single opacity and distance ($d = 145$ pc) for all disks, and with the assumption that the disk thermal emission is optically thin at the wavelength of the observations (0.88 mm, Barenfeld et al. 2016). We revisit these estimates based on the individual distances obtained from the parallaxes provided by the Gaia data release 2 (DR2, Gaia Collaboration et al. 2016, 2018, see Table 2).

Our main goal is to quantify the median values and the spread of \dot{M}_{acc} in the $\dot{M}_{\text{acc}}-M_{\text{disk}}$ relation. For this reason, and given the allocated telescope time, we selected the stars with disks in two representative bins of $M_{\text{disk,dust}}$ for which we have an almost complete sample (Fig. 1) compared to the Barenfeld et al. (2016) one. When we originally selected the sample, Gaia DR2 was not yet available. As a result of the revised distances, the completeness of our sample is not 100% in the two disk mass bins $0.16 \lesssim M_{\text{disk,dust}}/M_{\oplus} \lesssim 0.563$ and $0.75 \lesssim M_{\text{disk,dust}}/M_{\oplus} \lesssim 1.957$. On top of the targets in these two mass bins, we include in the analysis stars in Upper Scorpius that were observed in our previous observing run, as described in the next sub-section. The disk mass of these additional targets is outside the boundaries of the two disk mass bins just introduced, and are mainly at higher disk masses.

Considering the samples from the two programs and the correction done using the information from Gaia, the completeness of our sample is the following. Among the whole population of disks observed by Barenfeld et al. (2016) in Upper Scorpius with $0.16 \lesssim M_{\text{disk,dust}}/M_{\oplus} \lesssim 2.153$, we have obtained spectra for 28/36 of them. On top of that, 6/10 of the more massive disks were also observed by us. The sample includes two transition disks (2MASS J16042165-2130284, 2MASS J16062196-1928445), five “Evolved” disks, i.e. with little infrared excess, and 27 full disks. Moreover, one target that was not included in the sample of Barenfeld et al. (2016) was observed in our previous program. The latter is analyzed here, but cannot be included in the discussion due to the lack of a measured disk mass. Finally, one target (2MASSJ15354856-2958551) is a binary system we have resolved for the first time, and we associate the disk mass to both components. Therefore, the total number of targets for which we obtained the stellar and accretion properties here is 36, but the disk masses are available only for 35 of these. We verified that all the targets discussed here have parallaxes and proper motions compatible with being members of the Upper Scorpius association using the Gaia DR2 data.

2.2. Observations

All observations have been carried out with the X-Shooter spectrograph (Vernet et al. 2011) on the VLT. Out of the 36 targets, eight were observed during our previous service mode program Pr.Id. 097.C-0378 (PI Manara), and 28 in the visitor mode program Pr.Id. 0101.C-0866 (PI Manara). In both programs we obtained spectra both with narrow slits, to ensure a spectral resolution $R \gtrsim 10000$ in the VIS and NIR arm ($\lambda > 500\text{nm}$), and

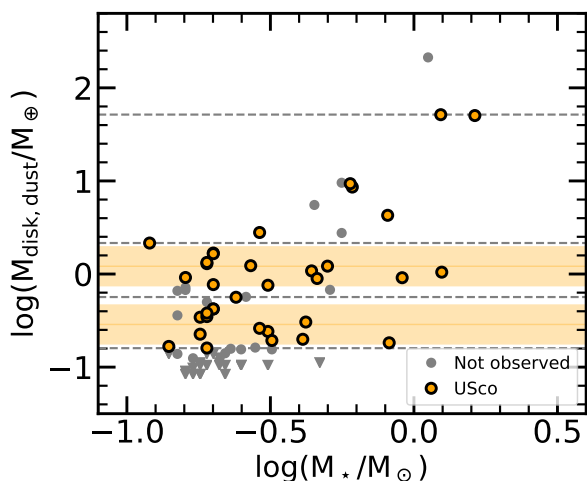


Fig. 1. Disk mass vs stellar mass after correcting the disk masses for the Gaia estimated distances and using the stellar masses derived here. Orange circles are used for targets observed with X-Shooter, gray symbols for targets not observed, circles for ALMA detections, downward facing triangles for ALMA upper limits. The shaded regions delimit the disk mass ranges where the sample is complete with respect to the Barenfeld et al. (2016) one. The dashed gray lines delimit the bins used in the discussion. For the objects not observed with X-Shooter the distances, disk, and stellar masses from the literature are adopted.

$R \gtrsim 5500$ in the UVB arm ($300 \lesssim \lambda \lesssim 500$ nm), and also with $5.0''$ wide slits to correct the narrow slit spectra for slit losses. The slit was always oriented at parallactic angle, apart from the visual binary system where the slit was aligned to include both components. The log of the observations is discussed in App. A and presented in Table A.1.

2.3. Data reduction

Data reduction was carried out with the X-Shooter pipeline v2.9.3 (Modigliani et al. 2010) using the Reflex workflow v2.8.5 (Freudling et al. 2013). The pipeline carries out the standard steps of flat, bias, and dark correction, wavelength calibration, spectral rectification and extraction of the 1D spectrum, and flux calibration using a standard star obtained in the same night. The 1D extraction of the spectra was carried out with IRAF from the rectified 2D spectrum in cases where the S/N of the UVB arm was low, and for resolved binaries. Telluric correction was done using telluric standard stars observed close in time and airmass for the VIS arm, and molecfit (Smette et al. 2015; Kausch et al. 2015) for the NIR arms for both single stars and binaries. Finally, the spectra obtained with the narrow slits were rescaled to the wide slit ones to correct for slit losses. This procedure is the same as used in previous works, e.g., Alcalá et al. (2017) and Manara et al. (2017a).

3. Data analysis

The analysis of the spectra to derive their stellar and accretion properties was carried out with the method described by Manara et al. (2013a). In short, the observed spectrum is dereddened and fitted with the sum of a photospheric template spectrum and a slab model to reproduce the continuum excess emission due to accretion. The grid of models used to find the best fit comprises various Class III photospheric templates with different

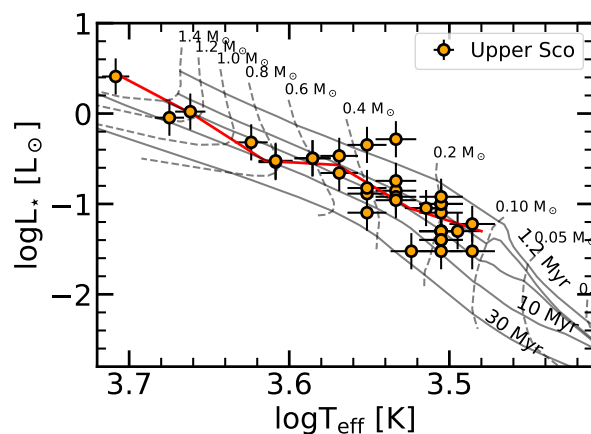


Fig. 2. HR diagram for the objects in USco observed here. The evolutionary tracks are from Baraffe et al. (2015), with isochrones for 1.2, 3, 5, 10, and 30 Myr. The red line is the median of the L_* in different T_{eff} bins.

spectral types (SpT) from G- to late M-type taken from Manara et al. (2013a, 2017b), different slab models, and extinction values (A_V), assuming the reddening law by Cardelli et al. (1989) and $R_V = 3.1$. The best fit of the Balmer continuum emission are shown in Figs. C.1-C.6. The integrated flux of the best fit slab models gives an estimate of the excess luminosity due to accretion (L_{acc}), and the best fit normalization of the Class III templates gives an estimate of the stellar luminosity (L_*). By converting the SpT to T_{eff} using the relation by Luhman et al. (2003), we are able to position the targets on the HR diagram (see Fig. 2) and obtain the stellar mass (M_*) using the evolutionary models by Baraffe et al. (2015) or Siess et al. (2000) (see Table 2). We note that our targets are located on the HRD typically between the 3 Myr and 10 Myr isochrones of the Baraffe et al. (2015) models, with large spread at $M_* \lesssim 0.4 M_\odot$. The location of the targets on the HRD is thus in line with an age of ~ 5 -10 Myr for the region, and with an older age than other well-known star-forming regions, such as Lupus and Chamaeleon I, which are showing typically higher values of L_* at any T_{eff} for objects with disks. Finally, \dot{M}_{acc} was obtained from the relation $\dot{M}_{\text{acc}} = 1.25 \cdot L_{\text{acc}} R_* / (GM_*)$. All the stellar and accretion values are given in Table 2.

As several emission lines are present in the spectra, we measure their luminosity and convert them in L_{acc} using the relations by Alcalá et al. (2017). For the stronger accretors ($L_{\text{acc}} \gtrsim 10^{-4} L_\odot$) the values of L_{acc} obtained from the fit described above or from the emission line fluxes are similar within the uncertainties, as usually found in accreting young stellar objects (e.g., Herczeg, & Hillenbrand 2008; Alcalá et al. 2014, 2017). For lower values of L_{acc} and for $\sim 20\%$ of the targets, instead, the accretion luminosity inferred from the line luminosities are systematically higher than those derived from the excess continuum luminosity, typically by a factor ~ 5 -10. This is in line with what was already observed by Alcalá et al. (2014), that the line emission is a higher fraction of the excess continuum emission for targets with low L_{acc} , with the total line emission being comparable to the continuum emission at $L_{\text{acc}} \lesssim 10^{-4} L_\odot$. We defer discussing this point to a future paper. In the following we assume that L_{acc} is the one measured from the excess continuum emission. Here, it is sufficient to say that if we were to replace the continuum excess luminosity with the sum of the continuum excess plus line emission the results discussed in the following would not

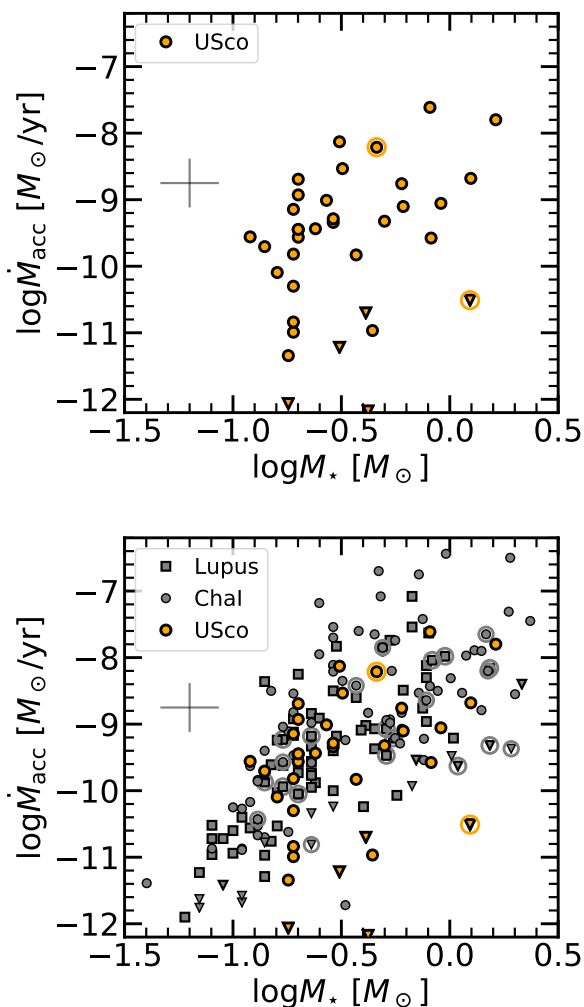


Fig. 3. Mass accretion rate vs stellar mass for the targets in the Upper Scorpius region (orange points, both in the upper and bottom panels) and for the targets in the Lupus and Chamaeleon I regions (gray symbols, bottom panel). The downward facing triangles are used for non-accreting objects, transition disk objects are highlighted with a circle around their symbols. The cross indicates the typical errors on the measurements.

be affected. We nevertheless note that \dot{M}_{acc} could be underestimated for the objects with the lowest accretion rates, which are typically below the chromospheric noise.

For some of the targets with the lowest measured accretion rates, the ratio L_{acc}/L_{\star} falls below the typical values for chromospheric emission for their spectral type (Manara et al. 2013a, 2017b). In particular, five targets are significantly below this chromospheric emission noise when considering the continuum emission, and below or compatible with this noise when considering the line emission. We define these five targets as possible non accretors (see Table 2), in line with previous work (e.g., Alcalá et al. 2014, 2017; Manara et al. 2016a, 2017a). The measured excess emission in these objects is considered in the analysis as an upper limit on the accretion rate, however, as discussed by Manara et al. (2017a), the measured excess emission could be contaminated by other processes, in particular chromospheric emission. No excess in the Balmer continuum region with respect to a photosphere is detectable for these targets (see Figs. C.1-C.6), in line with other estimates to confirm the ac-

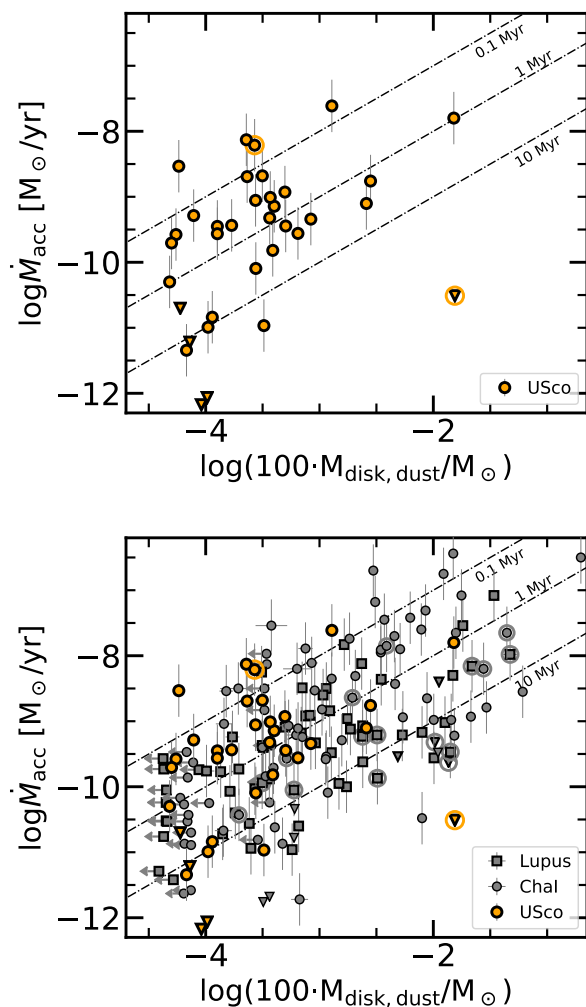


Fig. 4. Mass accretion rate vs disk mass for the targets in the Upper Scorpius region (orange points, both in the upper and bottom panels) and for the targets in the Lupus and Chamaeleon I regions (gray symbols, bottom panel). The dot-dashed lines report different ratios of $M_{\text{disk}}/M_{\text{acc}}$: 0.1 Myr, 1 Myr, and 10 Myr, as labelled. Symbols as in Fig. 3.

cretion status of a young stellar object (e.g., Herczeg, & Hillenbrand 2008; de Albuquerque et al. 2020). We note that for the non-accreting targets in the Upper Scorpius region the measured upper limit on L_{acc} , and thus \dot{M}_{acc} , is generally lower by ~ 0.5 -1 dex than what is measured in similarly non-accreting targets in the Lupus and Chamaeleon I regions. Since this estimate comes from the continuum emission fit and we noticed that the contribution of the lines is an higher fraction of the total excess emission at low L_{acc} , a small additional contribution from the line emission is also possible and would make these upper limits slightly higher, but still lower than those in younger regions.

The analysis of the spectra with the ROTFIT tool (Frasca et al. 2017) leads to values of T_{eff} for the targets in line with those from the fitting procedure described before. The discussion of these results is deferred to a future work.

4. Results

Our analysis of the X-Shooter spectra of the targets allowed us to derive their stellar parameters, and, for the first time, their mass

accretion rates. Here we discuss the relation between the following three parameters: the disk dust mass ($M_{\text{disk,dust}}$), which is also a proxy of the total disk mass (M_{disk}) assuming a constant gas-to-dust ratio of 100, the stellar mass (M_{\star}), and the mass accretion rate (\dot{M}_{acc}).

The distribution of the measured L_{acc} as a function of L_{\star} (see App. C.2), as well as the one of \dot{M}_{acc} vs M_{\star} (Fig. 3) reveals a great similarity with the relations observed in the younger Lupus and Chamaeleon I star-forming regions (Alcalá et al. 2014, 2017; Manara et al. 2016a, 2017a). Indeed, the values of \dot{M}_{acc} measured in accreting objects with disks in the Upper Scorpius region show both similar values and a similar large (~ 1 -2 dex) spread of \dot{M}_{acc} at any M_{\star} as those in these younger regions. One difference we note is that the maximum values of \dot{M}_{acc} measured in the Upper Scorpius sample ($\dot{M}_{\text{acc}} \sim 3 \cdot 10^{-8} M_{\odot}/\text{yr}$) is in line with the maximum values measured in Lupus, but lower than the maximum values measured in Chamaeleon I ($\dot{M}_{\text{acc}} \sim 3 \cdot 10^{-7} M_{\odot}/\text{yr}$). However, as we discuss in the following, this might be an effect of the incompleteness of our sample at any given M_{\star} , as we only selected the targets based on their disk masses.

Similarly, the distribution of the data for the Upper Scorpius targets on the $\dot{M}_{\text{acc}}-M_{\text{disk}}$ plane (Fig. 4) is in overall agreement with the values measured in the younger star-forming regions of Lupus and Chamaeleon I (Manara et al. 2016b; Mulders et al. 2017). A linear fit with the *linmix* tool, which considers uncertainties on both axes and non-detections (Kelly 2007), derives a similar slope (0.8 ± 0.4) and spread ($\sigma = 1.3$) on the Upper Scorpius sample as the relation found in the younger regions (Manara et al. 2016b; Mulders et al. 2017; Manara et al. 2019). However, the different level of completeness in the various bins of M_{disk} can impact this result.

The samples in the younger Chamaeleon I and Lupus star-forming regions include $>90\%$ of the objects with IR-excess, i.e. a disk, in these regions (Alcalá et al. 2017; Manara et al. 2017a; Pascucci et al. 2016; Ansdell et al. 2016, 2018). On the other hand, our sample in the Upper Scorpius region is, by construction, not similarly complete. Indeed, we selected only the most massive objects with IR-excess, and we are thus only complete at a similar level in small ranges of M_{disk} (see Sect. 2). In order to minimize the effects of incompleteness on the sample, we compare the median values and the spread of the $\dot{M}_{\text{acc}}-M_{\text{disk}}$ relation, in the range of M_{disk} where the sample in the Upper Scorpius region is $\sim 80\%$ complete with respect to the initial sample of Barenfeld et al. (2016). We thus select the bins of M_{disk} to carry out the analysis as reported in Table 1 and shown on Fig. 1, such that three of these bins cover the M_{disk} range with the highest completeness for the sample in the Upper Scorpius region. In the first and second of the chosen bins, the sample in the Upper Scorpius region is $\sim 80\%$ complete, in the third one the sample completeness is 60%. These bins are then used to calculate the medians for the observed \dot{M}_{acc} , shown in Fig. 5.

The comparison between the three data-sets, presented in Fig. 5 and reported also in Table 1, shows that the median values of \dot{M}_{acc} are similar in the three regions, although typically slightly smaller for Lupus. The spread of \dot{M}_{acc} , measured as the difference between the 84th and 16th percentile of the distribution in any bin, is typically slightly larger in the Chamaeleon I and Upper Scorpius regions ($\sim 1.6 - 1.7$ dex) than in the Lupus region (~ 1 dex).

5. Discussion

The results presented here show that the values of \dot{M}_{acc} measured in disk-hosting stars in a star-forming region with age ~ 5 -10 Myr are typically similar to those measured in disk-hosting stars in younger (age < 3 Myr) regions. This is true both for the median values of \dot{M}_{acc} at given M_{\star} and/or M_{disk} , as well as for the spread of \dot{M}_{acc} values at given M_{\star} and/or M_{disk} , which varies from one region to another but does not decrease with time. In particular, there are disks with high $\dot{M}_{\text{acc}} > 10^{-9} M_{\odot}/\text{yr}$ and low disk masses, i.e. with $M_{\text{disk}}/\dot{M}_{\text{acc}} \sim 0.1$ Myr, at all ages, even at $\sim 5 - 10$ Myr. In the following we discuss this result in light of some of the current models of disk evolution.

5.1. The comparison with viscous evolution models

The results shown here, taken at face value, are in contrast with a simple prescription of viscously evolving disks. A purely viscously evolving disk should have a value of \dot{M}_{acc} of the order of M_{disk} divided by the age of the disk, as shown by Jones et al. (2012) and Rosotti et al. (2017). This implies a tight correlation between these two quantities at ages much longer than the viscous timescale (e.g., Dullemond et al. 2006; Lodato et al. 2017; Mulders et al. 2017). In our data both the values of \dot{M}_{acc} are higher in several targets than those expected given M_{disk} in a viscous framework for disks of age > 5 Myr, and the values of \dot{M}_{acc} are more spread than the tight correlation expected. These results are solid even when considering our selection biases, as we are considering in each M_{disk} bin a close-to-complete fraction of the known objects still retaining a disk – traced by IR excess and ALMA detection.

To be able to reproduce the observed spread of the relation between \dot{M}_{acc} and M_{disk} in the Lupus and Chamaeleon I star-forming regions with viscous evolution models, both Lodato et al. (2017) and Mulders et al. (2017) needed to make several assumptions. First of all, the viscous timescale needed to be of the order of the age of the regions (~ 1 Myr). If this viscous timescale of ~ 1 Myr were to be an universal value, this would imply that the correlation must be tight at ages > 5 Myr. This is not observed here. Secondly, they needed to postulate a large dispersion of the model parameters: an age spread in the region, a distribution of initial conditions and of viscous timescales (or equivalently α -viscosity parameter). When then the models were convolved with the observational uncertainties, both the observed slope and spread of the $\dot{M}_{\text{acc}}-M_{\text{disk}}$ relation were reproduced.

We test here our results against the best fitting viscous models for the Lupus star-forming regions obtained by Lodato et al. (2017). These were described by a value of the exponent of the radial dependence of viscosity $\gamma=1.5$, a mean value of the viscosity timescale (t_v) of $\langle \log(t_v/\text{yr}) \rangle = 5.8$ with $\sigma_{t_v} = 1$ dex, a mean age of the disks $\langle \log(t/\text{yr}) \rangle = 5.9$ with $\sigma_t = 0.3$ dex, and further assuming $\langle \log(M_0/M_{\odot}) \rangle = -2.2$, with M_0 being the initial disk mass of the models, and $\sigma_{M_0} = 0.2$ dex. We let these viscous models evolve in time until an age of 8 Myr. The expectations from this models are shown in Fig. 6 and reported in Table 1. While the models predict a lower \dot{M}_{acc} at any M_{disk} at 8 Myr compared to 1 Myr, the data show that the measured values of \dot{M}_{acc} in the Upper Scorpius region are closer to the expectations from models of 1 Myr old viscously evolving disks. In particular, the 84th percentile of the distribution of \dot{M}_{acc} expected by the models is always lower than the median value measured in the disks in the Upper Scorpius region. Also, as noted in Sect. 4, the spread of the values of \dot{M}_{acc} at any given M_{disk} are similarly large in the older Upper Scorpius region as in the younger region

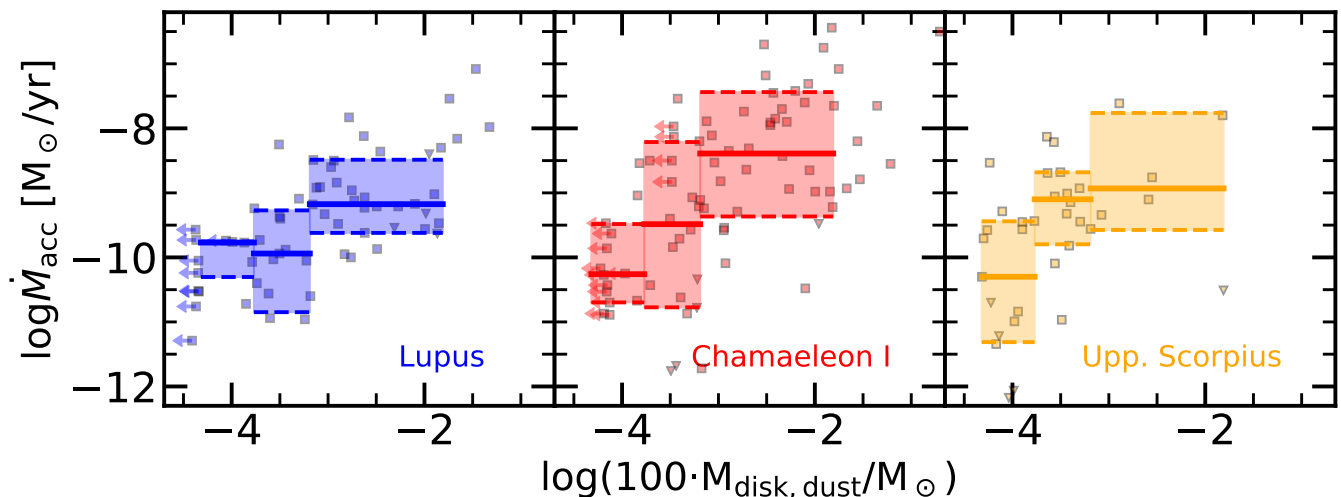


Fig. 5. Mass accretion rates vs disk dust masses for the targets in the Lupus and Chamaeleon I star forming regions, and in the Upper Scorpius region. The dashed lines report the 16th and 84th percentiles, and the solid line the median of the distributions.

Table 1. Median values for the $\dot{M}_{\text{acc}} - M_{\text{disk}}$ relation

Disk mass bin	Lupus			Chamaeleon I			Upper Sco			Viscous 1 Myr		Viscous 8 Myr	
	Median	Spr.	N _{data}	Median	Spr.	N _{data}	Median	Spr.	N _{data}	Median	Spr.	Median	Spr.
$4.8 \cdot 10^{-5} - 1.7 \cdot 10^{-4}$	-9.77	0.55	5/0/1	-10.26	1.22	14/0/11	-10.30	1.87	15/4/0	-10.01	1.11	-11.04	1.56
$1.7 \cdot 10^{-4} - 6.47 \cdot 10^{-4}$	-9.94	1.58	15/0/0	-9.48	2.56	20/4/4	-9.10	1.12	14/0/0	-9.53	0.76	-10.50	1.18
$6.47 \cdot 10^{-4} - 1.55 \cdot 10^{-2}$	-9.17	1.13	32/4/0	-8.39	1.93	36/1/0	-8.93	1.81	6/1/0	-8.91	1.35	-9.65	1.08

Notes. $M_{\text{disk}} = 100 * M_{\text{disk,dust}}$ in M_{\odot} . The table reports the values of $\log \dot{M}_{\text{acc}}$, reported in M_{\odot}/yr , for the median, and for the spread of the distribution, defined as the difference between the 16th and 84th percentile of the distribution in a given bin of M_{disk} . The latter is equivalent to a 2σ spread. The N_{data} columns report the total number of targets included in the bin / the number of non accretors in the bin / the number of undetected disks in the bin.

of Chamaeleon I, and larger than the viscous evolution model evolved at 8 Myr. This is particularly true when we compare the spread obtained fitting the model at 8 Myr using the *linmix* tool, $\sigma = 0.4$ dex, with the data in the Upper Scorpius region, that have a spread with this method of $\sigma = 1.3$ dex (see Sect. 4). We thus observe that the models able to reproduce the observed $\dot{M}_{\text{acc}} - M_{\text{disk}}$ relation with pure viscous evolution for the Lupus region are not in agreement with the observations in the Upper Scorpius region assuming only an age evolution from one region to another.

5.2. The impact of photoevaporation and variable accretion

The observations are even more discrepant from models predicting the $\dot{M}_{\text{acc}} - M_{\text{disk}}$ relation by means of both viscous evolution and internal photoevaporation. As shown by Somigliana et al. (2020), the effect of photoevaporation is to reduce the number of accreting targets at low disk masses and mass accretion rates in a way that, by ~ 10 Myr, only a fraction of massive disks are still surviving. This is not observed here, where we see low-mass disks with high \dot{M}_{acc} . It is unclear whether this disagreement is due to the fact that the models assume only one stellar mass and two fixed mass loss rate, or whether this is an issue of internal photoevaporation models in general.

On the other hand, external photoevaporation would predict that the disks have low mass, while still low values of $M_{\text{disk}}/\dot{M}_{\text{acc}} \sim 0.1$ Myr (see Fig. 4, and Rosotti et al. 2017; Sellek et al. 2020), more in line with what is observed here. In this context, it is worth mentioning that the environment of Upper Scorpius is different than the one of Chamaeleon I and Lupus, having more nearby massive stars (e.g., de Zeeuw et al. 1999). In such an environment the effect of external photoevaporation could have been relevant for the evolution of disks, possibly more than dynamical interactions (e.g., Winter et al. 2018). Whether this effect has been dominant for the evolution of the disks observed here is still an open question. Further modelling is mandatory here, but it is anyway puzzling how the mass accretion rates can be retained for such long time with so little disk mass available.

A possible solution to the fact that the accretion rates measured here are high given the measured M_{disk} might be variable accretion. However, studies in younger star-forming regions have shown that, in general, typical variation of \dot{M}_{acc} are < 0.4 dex in most disks (e.g., Costigan et al. 2014; Venuti et al. 2014), with only a small fraction of targets showing extreme variability of $\dot{M}_{\text{acc}} > 1-2$ dex (e.g., Audard et al. 2014). We could imagine that the variability is larger at the old regions of Upper Scorpius, but in this case we could expect a larger dispersion in accretion rates than in younger regions, which is instead not observed. Further studies on variability in older star-forming re-

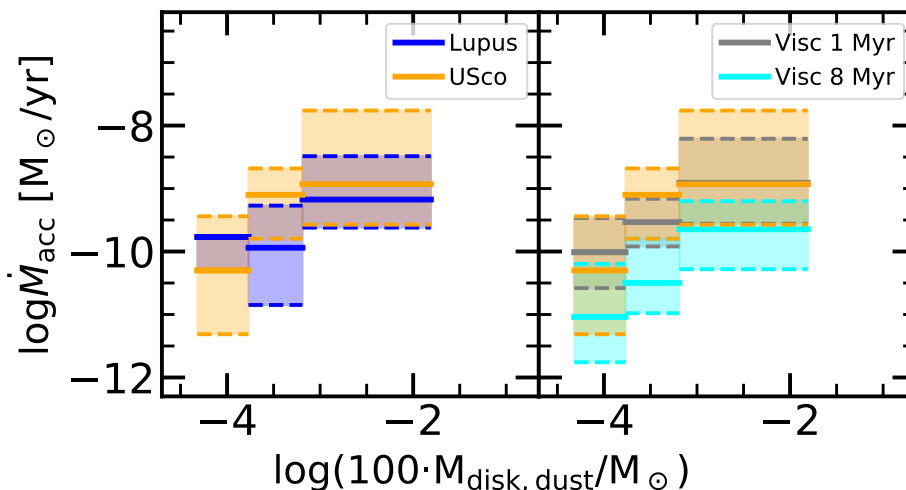


Fig. 6. Comparison between the median and percentiles of the mass accretion rates as a function of disk mass for the Lupus and Upper Scorpius regions (left), and for the Upper Scorpius region and the expectations from viscous models at 1 Myr and 8 Myr (right).

gions is needed. The mass-budget issue given the observed \dot{M}_{acc} and M_{disk} is therefore important. Indeed, under the assumption that \dot{M}_{acc} is constant with time, these high values of \dot{M}_{acc} would imply that over the lifetime of the disk $10^{-8} M_{\odot}/\text{yr} \cdot 10^7 \text{ yr} \sim 0.1 M_{\odot}$ of disk gas mass is accreted from the disk onto the star. Assuming a gas-to-dust ratio of 100, this means that a total of $M_{\text{disk,dust}} \sim 10^{-3} M_{\odot}$ was accreted. This value is in line with the most massive disks observed in the Lupus and Chamaeleon I disks, which could indeed be the progenitors of the survived disks observed here. Such high mass would probably imply that these disks were gravitationally unstable at the beginning of their life (e.g., Kratter & Lodato 2016). One possibility could be that accretion becomes active at older ages, as predicted by some models of MHD disk winds driven accretion (e.g., Armitage et al. 2013, for the case of a constant differential magnetic flux).

5.3. The need to account for dust evolution

It is worth mentioning again that the assumption $M_{\text{disk}} = 100 \cdot M_{\text{disk,dust}}$ even after ~ 5 -10 Myr of disk evolution is possibly incorrect. As shown by global models of dust and gas evolution (e.g., Birnstiel et al. 2010; Rosotti et al. 2019), dust radial drift is in general more efficient than gas accretion, implying that the dust-to-gas ratio is a decreasing function of time. Depending on the disk parameters (such as the efficiency of grain growth and the disk size), there can be an initial period of time, lasting ~ 1 -2 Myr, in which the assumption $M_{\text{disk}} \sim 100 \cdot M_{\text{disk,dust}}$ is almost reasonable. However, this could not be the case for the Upper Scorpius targets, which are significantly older.

At an age of ~ 5 -10 Myr, models tend to predict that the dust is depleted by a factor ranging from ~ 10 to ~ 100 (e.g., Birnstiel et al. 2010; Rosotti et al. 2019). Such an increase in the gas-to-dust ratio to 1000 or more would make the median values of $M_{\text{disk}}/M_{\text{acc}}$ more in line with expectations from viscous evolution by implying that the disks are substantially more massive than assumed here. A dedicated modelling effort would be needed to assess whether this is indeed a viable explanation, but this falls outside the scope of this paper. While this could reconcile the median values of \dot{M}_{acc} with viscous evolution models while making the disks in Upper Scorpius as massive as the

younger disks in Chamaeleon I and Lupus, it is unclear whether a better match with the observed age-independent spread could be obtained with such models. Already Mulders et al. (2017) have shown that a simple scatter in the values of the gas-to-dust ratio alone cannot reproduce the observed scatter in the $\dot{M}_{\text{acc}}-M_{\text{disk}}$ relation with no need for other sources of scatter, such as accretion variability.

5.4. Does the mass accretion rate decreases with time?

The detection of strong accretors at old ages, and the connected hint of a lack of a general decrease of accretion rates with time when the targeted stars are still hosting a disk, has already been observed in different older star-forming regions: the nearby loose associations TWA (Venuti et al. 2019) and η -Cha (Rugel et al. 2018), the more distant γ -Velorum cluster (Frasca et al. 2015), Orion OB1b and Orion OB1a associations (Ingleby et al. 2014), and even the very massive regions like NGC3603 or 30 Doradus (De Marchi et al. 2017). Individual targets have also been found to be still accreting also at age > 20 Myr (e.g., Mamajek et al. 2002; Zuckerman et al. 2014; Murphy et al. 2018; Lee et al. 2020). While this appears to be in contrast with evidence of a decrease of \dot{M}_{acc} with individual ages of young stars (e.g., Hartmann et al. 1998; Sicilia-Aguilar et al. 2010; Antonucci et al. 2014; Hartmann et al. 2016), it should be noted that Da Rio et al. (2014) showed that correlated uncertainties on the determination of stellar parameters from the HR diagram can lead to spurious correlations between \dot{M}_{acc} and individual ages. Also, it is well known that the exact values of individual ages suffer from many uncertainties (e.g., Soderblom et al. 2014). The incompleteness of our sample does not allow us to draw final statements on this finding.

We want to anyway stress that we are here sampling only the surviving disks at old ages. Indeed, it is well-known that the fraction of disks and accretors decreases with time (e.g., Haisch et al. 2001; Hernández et al. 2007; Fedele et al. 2010). Here we can only consider the accretion rates of those disks that have survived until the age of the Upper Scorpius region, while the mass accretion rates of the other targets without IR- or mm-detected disk is by this age probably below the chromospheric activity

limits of these old stars. While this is not an issue for the $\dot{M}_{\text{acc}}-M_{\text{disk}}$ relation, unless there is a population of massive disks with no accretion, it can impact measurements of typical \dot{M}_{acc} at different ages in populations of stars (see e.g., Sicilia-Aguilar et al. 2010).

6. Conclusions

We presented the analysis of the X-Shooter spectra of 36 young stellar objects with disks detected with ALMA in the ~ 5 -10 Myr old Upper Scorpius region. For the first time, the accretion rates for these targets were derived, together with their stellar properties. After re-scaling the values of the stellar, accretion, and disk properties with the new distances of the individual targets inferred from the Gaia DR2 parallaxes, we obtained the following results.

The dependence of \dot{M}_{acc} with M_{\star} and with M_{disk} is similar in the Upper Scorpius region and in younger regions, such as Lupus and Chamaeleon I. In particular, the median values of \dot{M}_{acc} at any given M_{disk} are similar in the three regions, while the scatter of \dot{M}_{acc} varies from one region to another, but does not diminishes with the age of the region. Both facts are in marked disagreement with simple predictions of viscous evolution models. The higher \dot{M}_{acc} values than predicted by viscous models for a given M_{disk} could maybe be explained if the gas-to-dust ratio increases with time, as it is expected by a radial drift dominated dust evolution process.

The difficulties of simple disk viscous evolution models to explain our results stress the need to develop to a similar level of details alternative models, such as those where the accretion through the disk is driven by MHD disk winds (e.g., Armitage et al. 2013; Bai & Stone 2013) coupled with global models of dust evolution, so that they could be validated against the existing body of observations.

On the observational side, future work should focus on completing the survey of \dot{M}_{acc} in older regions even in targets whose disks are not detected at millimetre wavelengths. At the same time, deep surveys of the gas emission in both young (~ 1 -2 Myr) disks and disks with age > 5 Myr are mandatory to establish whether the results presented here are due to a different process than viscous evolution, or to the outcome of the evolution of dust in disks.

Acknowledgements. We thank S. Barenfeld and P. Cazzoletti for their help in the selection of the targets for the observations that were used for this work. CFM acknowledges an ESO fellowship. This project has received funding from the European Union's Horizon 2020 research and innovation programme under the Marie Skłodowska-Curie grant agreement No 823823 (DUSTBUSTERS). This work was partly supported by the Deutsche Forschungs-Gemeinschaft (DFG, German Research Foundation) - Ref no. FOR 2634/1 TE 1024/1-1. This work has made use of data from the European Space Agency (ESA) mission *Gaia* (<https://www.cosmos.esa.int/gaia>), processed by the *Gaia* Data Processing and Analysis Consortium (DPAC, <https://www.cosmos.esa.int/web/gaia/dpac/consortium>). Funding for the DPAC has been provided by national institutions, in particular the institutions participating in the *Gaia* Multilateral Agreement. This work is part of the research programme VENI with project number 016.Veni.192.233, which is (partly) financed by the Dutch Research Council (NWO). This work has been supported by the project PRIN-INAF Main Stream 2018 "Protoplanetary disks seen through the eyes of new generation instruments".

References

Alcalá, J. M., Natta, A., Manara, C. F., et al. 2014, *A&A*, 561, A2
 Alcalá, J. M., Manara, C. F., Natta, A., et al. 2017, *A&A*, 600, A20
 Ansdell, M., Williams, J. P., van der Marel, N., et al. 2016, *ApJ*, 828, 46
 Ansdell, M., Williams, J. P., Manara, C. F., et al. 2017, *AJ*, 153, 240

Ansdell, M., Williams, J. P., Trapman, L., et al. 2018, *ApJ*, 859, 21
 Antonucci, S., García López, R., Nisini, B., et al. 2014, *A&A*, 572, A62
 Armitage, P. J., Simon, J. B., & Martin, R. G. 2013, *ApJ*, 778, L14
 Audard, M., Ábrahám, P., Dunham, M. M., et al. 2014, *Protostars and Planets VI*, 387
 Bai, X.-N., & Stone, J. M. 2013, *ApJ*, 769, 76
 Baraffe, I., Homeier, D., Allard, F., & Chabrier, G. 2015, *A&A*, 577, A42
 Barenfeld, S. A., Carpenter, J. M., Ricci, L., et al. 2016, *ApJ*, 827, 142
 Barenfeld, S. A., Carpenter, J. M., Sargent, A. I., et al. 2017, *ApJ*, 851, 85
 Birnstiel, T., Dullemond, C. P., & Brauer, F. 2010, *A&A*, 513, A79
 Cardelli, J. A., Clayton, G. C., & Mathis, J. S. 1989, *ApJ*, 345, 245
 Carpenter, J. M., Mamajek, E. E., Hillenbrand, L. A., et al. 2006, *ApJ*, 651, L49
 Costigan, G., Vink, J. S., Scholz, A., et al. 2014, *MNRAS*, 440, 3444
 Da Rio, N., Jeffries, R. D., Manara, C. F., et al. 2014, *MNRAS*, 439, 3308
 David, T. J., Hillenbrand, L. A., Gillen, E., et al. 2019, *ApJ*, 872, 161
 de Albuquerque, R. M. G., Gameiro, J. F., Alencar, S. H. P., et al. 2020, arXiv e-prints, arXiv:2003.09511
 De Marchi, G., Panagia, N., & Beccari, G. 2017, *ApJ*, 846, 110
 Dullemond, C. P., Natta, A., & Testi, L. 2006, *ApJ*, 645, L69
 Ercolano, B. & Pascucci, I. 2017, *Royal Society Open Science*, 4, 170114
 Fedele, D., van den Ancker, M. E., Henning, T., et al. 2010, *A&A*, 510, A72
 Feiden, G. A. 2016, *A&A*, 593, A99
 Frasca, A., Biazzo, K., Lanzafame, A. C., et al. 2015, *A&A*, 575, A4
 Frasca, A., Biazzo, K., Alcalá, J. M., et al. 2017, *A&A*, 602, A33
 Freudling, W., Romaniello, M., Bramich, D. M., et al. 2013, *A&A*, 559, A96
 Gaia Collaboration, Prusti, T., de Bruijne, J. H. J., et al. 2016, *A&A*, 595, A1
 Gaia Collaboration, Brown, A. G. A., Vallenari, A., et al. 2018, *A&A*, 616, A1
 Haisch, K. E., Lada, E. A., & Lada, C. J. 2001, *ApJ*, 553, L153
 Hartmann, L., Calvet, N., Gullbring, E., et al. 1998, *ApJ*, 495, 385
 Hartmann, L., Herczeg, G., & Calvet, N. 2016, *ARA&A*, 54, 135
 Herczeg, G. J., & Hillenbrand, L. A. 2008, *ApJ*, 681, 594
 Hernández, J., Hartmann, L., Megeath, T., et al. 2007, *ApJ*, 662, 1067
 Ingleby, L., Calvet, N., Hernández, J., et al. 2014, *ApJ*, 790, 47
 Jones, M. G., Pringle, J. E., & Alexander, R. D. 2012, *MNRAS*, 419, 925
 Kausch, W., Noll, S., Smette, A., et al. 2015, *A&A*, 576, A78
 Kelly, B. C. 2007, *ApJ*, 665, 1489
 Kratter, K., & Lodato, G. 2016, *ARA&A*, 54, 271
 Lee, J., Song, I., & Murphy, S. 2020, *MNRAS*, 494, 62
 Lodato, G., Scardoni, C. E., Manara, C. F. et al. 2017, *MNRAS*, 472, 4700.
 Luhman, K. L., Stauffer, J. R., Muench, A. A., et al. 2003, *ApJ*, 593, 1093
 Luhman, K. L., & Mamajek, E. E. 2012, *ApJ*, 758, 31
 Lynden-Bell, D., & Pringle, J. E. 1974, *MNRAS*, 168, 603
 Mamajek, E. E., Meyer, M. R., & Liebert, J. 2002, *AJ*, 124, 1670
 Manara, C. F., Testi, L., Rigliaco, E., et al. 2013a, *A&A*, 551, A107
 Manara, C. F., Beccari, G., Da Rio, N., et al. 2013b, *A&A*, 558, A114
 Manara, C. F., Testi, L., Natta, A., et al. 2014, *A&A*, 568, A18
 Manara, C. F., Fedele, D., Herczeg, G. J. et al. 2016a, *A&A*, 585, A136.
 Manara, C. F., Rosotti, G., Testi, L. et al. 2016b, *A&A*, 591, L3
 Manara, C. F., Testi, L., Herczeg, G. J. et al. 2017a, *A&A*, 604, A127.
 Manara, C. F., Frasca, A., Alcalá, J. M., et al. 2017b, *A&A*, 605, A86
 Manara, C. F., Morbidelli, A., & Guillot, T. 2018, *A&A*, 618, L3
 Manara, C. F., Mordasini, C., Testi, L., et al. 2019, *A&A*, 631, L2
 Modigliani, A., Goldoni, P., Royer, F., et al. 2010, *Proc. SPIE*, 773728
 Morbidelli, A., & Raymond, S. N. 2016, *Journal of Geophysical Research (Planets)*, 121, 1962
 Mulders, G. D., Pascucci, I., Manara, C. F., et al. 2017, *ApJ*, 847, 31
 Murphy, S. J., Mamajek, E. E., & Bell, C. P. M. 2018, *MNRAS*, 476, 3290
 Pascucci, I., Testi, L., Herczeg, G. J., et al. 2016, *ApJ*, 831, 125
 Pecaut, M. J., & Mamajek, E. E. 2016, *MNRAS*, 461, 794
 Rosotti, G. P., Clarke, C. J., Manara, C. F., & Facchini, S. 2017, *MNRAS*, 468, 1631
 Rosotti, G. P., & Clarke, C. J. 2018, *MNRAS*, 473, 5630
 Rosotti, G. P., Tazzari, M., Booth, R. A., et al. 2019, *MNRAS*, 486, 4829
 Rugel, M., Fedele, D., & Herczeg, G. 2018, *A&A*, 609, A70
 Sellek, A. D., Booth, R. A., & Clarke, C. J. 2020, *MNRAS*, 492, 1279
 Sicilia-Aguilar, A., Henning, T., & Hartmann, L. W. 2010, *ApJ*, 710, 597
 Siess, L., Dufour, E., & Forestini, M. 2000, *A&A*, 358, 593
 Smette, A., Sana, H., Noll, S., et al. 2015, *A&A*, 576, A77
 Soderblom, D. R., Hillenbrand, L. A., Jeffries, R. D., Mamajek, E. E., & Naylor, T. 2014, *Protostars and Planets VI*, 219
 Somigliana, A., Toci, C., Lodato, G., et al. 2020, *MNRAS*, 492, 1120
 Testi, L., Birnstiel, T., Ricci, L., et al. 2014, *Protostars and Planets VI*, 339
 Venuti, L., Bouvier, J., Flaccomio, E., et al. 2014, *A&A*, 570, A82
 Venuti, L., Stelzer, B., Alcalá, J. M., et al. 2019, *A&A*, 632, A46
 Vernet, J., Dekker, H., D'Odorico, S., et al. 2011, *A&A*, 536, A105
 Winter, A. J., Clarke, C. J., Rosotti, G., et al. 2018, *MNRAS*, 478, 2700
 Wilkinson, S., Merín, B., & Riviere-Marichalar, P. 2018, *A&A*, 618, A12
 de Zeeuw, P. T., Hoogerwerf, R., de Bruijne, J. H. J., et al. 1999, *AJ*, 117, 354
 Zuckerman, B., Vican, L., & Rodriguez, D. R. 2014, *ApJ*, 788, 102

Table 2. Stellar, disk, and accretion properties for the targets in the Upper Scorpius region

Name	disk type	dist [pc]	SpT	T_{eff} [K]	A_V [mag]	L_{\star}/L_{\odot}	$\log L_{\text{acc}}/L_{\odot}$	M_{\star}/M_{\odot}	$\dot{M}_{\text{acc}}/M_{\odot}/\text{yr}$	Acc?	$M_{\text{disk,dust}}/M_{\odot}$
2MASSJ15534211-2049282	Full	136 ± 4	M4	3270	1.2	0.09	-2.6	0.24	3.66·10 ⁻¹⁰	Y	1.69·10 ⁻⁰⁶
2MASSJ15583692-2257153	Full	166 ± 4	K0	5110	0.0	2.57	-0.5	1.63*	1.59·10 ⁻⁰⁸	Y	1.51·10 ⁻⁰⁴
2MASSJ16001844-2230114	Full	138 ± 9	M4.5	3200	0.8	0.08	-1.9	0.20	2.03·10 ⁻⁰⁹	Y	2.31·10 ⁻⁰⁶
2MASSJ16035767-2031055	Full	143 ± 1	K6	4205	0.7	0.48	-1.8	0.91	8.81·10 ⁻¹⁰	Y	2.74·10 ⁻⁰⁶
2MASSJ16035793-1942108	Full	158 ± 2	M2	3560	0.3	0.13	-5.1	0.42	6.69·10 ⁻¹³	N	9.16·10 ⁻⁰⁷
2MASSJ16041740-1942287	Full	161 ± 2	M3	3415	0.7	0.14	-4.3	0.31	6.04·10 ⁻¹²	N	7.26·10 ⁻⁰⁷
2MASSJ16041893-2430392	...	145	M2	3560	0.3	0.45	-3.1	0.37	1.48·10 ⁻¹⁰	Y	...
2MASSJ16042165-2130284	Transitional	150 ± 1	K3	4730	1.4	0.90	-3.2	1.24	3.09·10 ⁻¹¹	N	1.55·10 ⁻⁰⁴
2MASSJ15354856-2958551_E	Full (binary)	145	M4.5	3200	0.0	0.10	-2.8	0.20	3.53·10 ⁻¹⁰	Y	1.27·10 ⁻⁰⁶
2MASSJ15354856-2958551_W	... (binary)	145	M4.5	3200	0.0	0.10	-2.9	0.20	2.73·10 ⁻¹⁰	Y	1.27·10 ⁻⁰⁶
2MASSJ15514032-2146103	Evolved	142 ± 2	M4.5	3200	0.3	0.05	-3.5	0.19	5.01·10 ⁻¹¹	Y	4.82·10 ⁻⁰⁷
2MASSJ15530132-2114135	Full	146 ± 2	M4.5	3200	0.8	0.05	-3.0	0.19	1.52·10 ⁻¹⁰	Y	3.88·10 ⁻⁰⁶
2MASSJ15582981-2310077	Full	147 ± 3	M4.5	3200	1.0	0.05	-2.3	0.19	7.16·10 ⁻¹⁰	Y	4.00·10 ⁻⁰⁶
2MASSJ16014086-2258103	Full	145	M3	3415	1.2	0.12	-1.2	0.31	7.42·10 ⁻⁰⁹	Y	2.28·10 ⁻⁰⁶
2MASSJ16020757-2257467	Full	140 ± 1	M2	3560	0.4	0.08	-3.8	0.44	1.08·10 ⁻¹¹	Y	3.25·10 ⁻⁰⁶
2MASSJ16024152-2138245	Full	142 ± 2	M5.5	3060	0.6	0.03	-2.9	0.12	2.76·10 ⁻¹⁰	Y	6.46·10 ⁻⁰⁶
2MASSJ16054540-2023088	Full	145 ± 2	M4.5	3200	0.6	0.10	-2.8	0.20	3.58·10 ⁻¹⁰	Y	5.05·10 ⁻⁰⁶
2MASSJ16062196-1928445	Transitional	145	M1	3705	0.8	0.34	-1.3	0.46	6.13·10 ⁻⁰⁹	Y	2.69·10 ⁻⁰⁶
2MASSJ16063539-2516510	Evolved	139 ± 3	M4.5	3200	0.0	0.03	-5.1	0.18	8.62·10 ⁻¹³	N	1.03·10 ⁻⁰⁶
2MASSJ16064385-1908056	Evolved	144 ± 7	K7	4060	0.4	0.29	-2.3	0.82	2.65·10 ⁻¹⁰	Y	5.48·10 ⁻⁰⁷
2MASSJ16072625-2432079	Full	143 ± 2	M3	3415	0.7	0.18	-2.6	0.29	4.56·10 ⁻¹⁰	Y	8.39·10 ⁻⁰⁶
2MASSJ16081566-2222199	Full	140 ± 2	M2	3560	0.5	0.15	-3.7	0.41	1.99·10 ⁻¹¹	N	5.98·10 ⁻⁰⁷
2MASSJ16082324-1930009	Full	138 ± 1	M0	3850	1.1	0.32	-2.0	0.61	7.90·10 ⁻¹⁰	Y	2.58·10 ⁻⁰⁵
2MASSJ16082751-1949047	Evolved	145	M5.5	3060	0.6	0.06	-3.1	0.14	1.97·10 ⁻¹⁰	Y	5.01·10 ⁻⁰⁷
2MASSJ16090002-1908368	Full	139 ± 3	M4.5	3200	0.3	0.05	-4.2	0.19	1.02·10 ⁻¹¹	Y	1.05·10 ⁻⁰⁶
2MASSJ16090075-1908526	Full	138 ± 1	M0	3850	1.0	0.32	-1.7	0.60	1.74·10 ⁻⁰⁹	Y	2.81·10 ⁻⁰⁵
2MASSJ16095361-1754474	Full	158 ± 5	M4.5	3200	0.5	0.04	-4.5	0.18	4.54·10 ⁻¹²	Y	6.78·10 ⁻⁰⁷
2MASSJ16104636-1840598	Full	143 ± 3	M4.5	3200	1.2	0.04	-3.9	0.19	1.45·10 ⁻¹¹	Y	1.14·10 ⁻⁰⁶
2MASSJ16111330-2019029	Full	155 ± 1	M3.5	3340	0.6	0.03	-1.9	0.27	9.77·10 ⁻¹⁰	Y	3.69·10 ⁻⁰⁶
2MASSJ16123916-1859284	Full	139 ± 2	M1	3705	0.6	0.22	-2.3	0.50	4.75·10 ⁻¹⁰	Y	3.65·10 ⁻⁰⁶
2MASSJ16133650-2503473	Full	145	M3	3415	1.0	0.11	-1.6	0.32	2.93·10 ⁻⁰⁹	Y	5.80·10 ⁻⁰⁷
2MASSJ16135434-2320342	Full	145	M4.5	3200	0.3	0.12	-2.3	0.20	1.18·10 ⁻⁰⁹	Y	4.97·10 ⁻⁰⁶
2MASSJ16141107-2305362	Full	145	K4	4590	0.3	1.05	-1.4	1.25	2.09·10 ⁻⁰⁹	Y	3.15·10 ⁻⁰⁶
2MASSJ16143367-1900133	Full	142 ± 2	M3	3415	1.9	0.52	-2.7	0.29	5.17·10 ⁻¹⁰	Y	7.84·10 ⁻⁰⁷
2MASSJ16154416-1921171	Full	132 ± 2	K7	4060	2.8	0.30	-0.3	0.81	2.44·10 ⁻⁰⁸	Y	1.28·10 ⁻⁰⁵
2MASSJ16181904-2028479	Evolved	138 ± 2	M5	3125	1.6	0.05	-3.4	0.16	8.05·10 ⁻¹¹	Y	2.76·10 ⁻⁰⁶

Notes. Disk type from Barenfeld et al. (2016); Luhman & Mamajek (2012); Carpenter et al. (2006). Stellar properties obtained using the Baraffe et al. (2015) evolutionary models, apart from the target 2MASSJ15583692-2257153, for which Siess et al. (2000) models were used since the stellar mass was higher than the maximum one modelled by Baraffe et al. (2015). Disk masses are updated from Barenfeld et al. (2016) using the distance inferred from the Gaia DR2 (Gaia Collaboration et al. 2018) parallaxes. When no uncertainties on the distance is reported, the mean distance to the targets of 145 pc was adopted. Possible non-accretors are reported with 'N' in the 'Acc?' column. The values reported here for the accretion rate of non accretors is considered in this work as upper limits.

Appendix A: Log of the observations

The observations were carried out in two different observing programs. Eight targets were observed in the Service Mode program Pr.Id. 097.C-0378 (PI Manara) in the period of July and August 2016. Typically these observations were carried out with image quality in the VIS arm of $\sim 1''$ (see Table A.1). The standard star observed at the beginning of the night as part of the standard calibration plan for X-Shooter was used for the flux calibration of the spectra.

The remaining 28 targets discussed here were observed during the Visitor Mode program Pr.Id. 0101.C-0866 (PI Manara) carried out in the nights of May 19th and 20th 2018. Both nights had very good seeing, typically $< 0.5''$, leading to image qualities in the VIS arm better than $1''$ in all cases but two. Small clouds (THN conditions) were present at the beginning of the nights, otherwise the nights were clear. We observed flux standard stars

at the beginning and at the end of the night in the first night, and at the beginning, in the middle, and at the end of the night in the second night. The reduction lead to consistent results with all standard stars. We adopted for the reduction of the data obtained in the first night the standard star observed at the end of the night. For the data obtained in the first part of the second night we used the standard star observed in the middle of the night, while we used the one observed at the end of the night for the spectra obtained in the second half of the night, starting from and including 2MASS J16072625-2432079.

Appendix A.1: Resolved binaries

During the visitor mode observations we resolved two close-by stars: 2MASS J15354856-2958551 and 2MASS J16054540-2023088. The former system is composed by two stars at about

Table A.1. Night log of the observations

2MASS	Date of observation [UT]	Exp. Time [Nexp x (s)]	Slit width ["]			I.Q. ["]
			UVB	VIS	NIR	
J15534211-2049282	2016-07-24T04:02:25.209	4x450	1.0	0.4	0.4	1.07
J15583692-2257153	2016-07-25T03:37:53.376	4x120	0.5	0.4	0.4	1.15
J16001844-2230114	2016-08-09T01:56:46.720	4x450	1.0	0.4	0.4	0.91
J16035767-2031055	2016-08-18T02:04:50.750	4x150	0.5	0.4	0.4	1.03
J16035793-1942108	2016-08-09T00:06:57.436	4x450	1.0	0.4	0.4	0.72
J16041740-1942287	2016-08-07T23:57:24.090	4x450	1.0	0.4	0.4	1.02
J16041893-2430392	2016-08-26T02:20:38.193	4x150	0.5	0.4	0.4	1.02
J16042165-2130284	2016-08-18T02:43:53.101	4x150	0.5	0.4	0.4	0.9
J15354856-2958551_E	2018-05-19T23:39:04.373	4x300	1.0	0.4	0.4	0.42
J15354856-2958551_W	2018-05-19T23:39:04.373	4x300	1.0	0.4	0.4	0.42
J15514032-2146103	2018-05-21T02:38:56.215	4x675	1.0	0.9	0.9	0.75
J15530132-2114135	2018-05-20T02:06:26.327	4x675	1.0	0.9	0.9	0.9
J15582981-2310077	2018-05-20T03:07:24.550	4x630	1.0	0.9	0.9	0.86
J16014086-2258103	2018-05-20T08:38:14.117	4x150	1.0	0.4	0.4	0.97
J16020757-2257467	2018-05-20T00:39:53.156	4x195	1.0	0.4	0.4	0.93
J16024152-2138245	2018-05-21T05:22:25.139	4x675	1.0	0.9	0.9	0.77
J16054540-2023088	2018-05-20T08:04:28.437	4x300	1.0	0.4	0.4	1.03
J16062196-1928445	2018-05-20T00:15:54.949	4x120	0.5	0.4	0.4	0.9
J16063539-2516510	2018-05-20T07:10:36.261	4x525	1.0	0.9	0.9	0.73
J16064385-1908056	2018-05-21T00:37:34.606	4x120	1.0	0.4	0.4	0.84
J16072625-2432079	2018-05-21T06:51:13.403	4x225	1.0	0.4	0.4	0.64
J16081566-2222199	2018-05-21T01:11:07.195	4x195	1.0	0.4	0.4	0.96
J16082324-1930009	2018-05-21T07:19:48.545	4x120	1.0	0.4	0.4	0.7
J16082751-1949047	2018-05-21T01:39:00.144	4x450	1.0	0.4	0.4	1.
J16090002-1908368	2018-05-21T03:39:56.012	4x600	1.0	0.9	0.9	0.7
J16090075-1908526	2018-05-20T09:34:05.964	4x75	1.0	0.4	0.4	0.9
J16095361-1754474	2018-05-20T05:17:57.934	4x600	1.0	0.9	0.9	0.46
J16104636-1840598	2018-05-20T06:14:36.404	4x600	1.0	0.9	0.9	0.74
J16111330-2019029	2018-05-20T01:07:08.211	4x195	1.0	0.4	0.4	0.99
J16123916-1859284	2018-05-20T01:34:34.877	4x120	1.0	0.4	0.4	1.09
J16133650-2503473	2018-05-21T06:22:13.098	4x225	1.0	0.4	0.4	0.63
J16135434-2320342	2018-05-20T09:02:41.397	4x150	1.0	0.4	0.4	0.9
J16141107-2305362	2018-05-21T00:21:01.107	4x140	0.5	0.4	0.4	1.38
J16143367-1900133	2018-05-21T04:45:56.354	4x300	1.0	0.4	0.4	0.62
J16154416-1921171	2018-05-21T07:41:25.241	4x120	1.0	0.4	0.4	0.71
J16181904-2028479	2018-05-20T04:17:13.271	4x675	1.0	0.9	0.9	0.82

Notes. Typical resolution in the UVB arm are $R \sim 9700$ for 0.5" wide slits, $R \sim 5400$ for 1.0" wide slits; in the VIS arm $R \sim 18400$ for 0.4" wide slits, $R \sim 8900$ for 0.9" slits; in the NIR arm $R \sim 11600$ for 0.4" wide slits, and $R \sim 5600$ for 0.9" wide slits. I.Q. is the airmass corrected seeing.

$\sim 1''$ distance from each other in the west-east direction. They were observed by orienting the slit at position angle -105.27° , while parallactic angle was -104.85° . The latter system is composed by two objects at 2.14" distance, and they were both included in the slit oriented at position angle 54.4° . The two traces are resolved in both observations when using the narrow slits, while only for 2MASS J16054540-2023088 when using the wide slit. We extract the two spectra manually from the pipeline reduced 2D spectra using IRAF¹.

In the case of 2MASS J15354856-2958551 both spectra are those of a young stellar object, showing clear Lithium absorption lines and strong emission lines. We flux calibrated the narrow slit spectra calculating the ratio between the combined ones in the large slit exposure and the sum of the separated spectra in the narrow slit exposure.

On the other hand, in the case of J16054540-2023088 one spectrum is the one of a young stellar object, while the other one is an early-type background object. Indeed, the latter becomes

fainter in the optical and near-infrared than the YSO. The location of the YSO is at the correct 2MASS coordinates. We thus flux calibrate the YSO spectrum taken with the narrow slit using the one with the wide slit for this object alone.

Appendix B: Information from Gaia

We searched for the Gaia (Gaia Collaboration et al. 2016) counterpart for our targets in the Gaia DR2 catalog (Gaia Collaboration et al. 2018). Only 6 of our targets have no astrometric solutions and in one case no matching with Gaia is found. In one case the parallax is negative and the proper motion very different with respect to other objects in our sample (2MASS J16141107-2305362). In two case the matching is with separation $>0.7''$: one is for a component of the binary system, but in this case there is no astrometric solution, in the other case it is for 2MASS J16014086-2258103, and we do not consider the parallax value reliable.

We checked whether any of the targets shared similar astrometric parameters (proper motion, parallax, coordinates) with young stars in the ρ -Ophiucus region. While the proper motions are similar, the spatial location is different and we consider all

¹ IRAF is distributed by the National Optical Astronomy Observatory, which is operated by the Association of Universities for Research in Astronomy (AURA) under a cooperative agreement with the National Science Foundation.

our targets bona-fide members of the Upper Scorpius association.

The distances to individual targets are reported in Table 2 and are obtained by inverting the parallaxes. When no Gaia parallax is available we assumed $d=145$ pc.

Appendix C: Additional plots

Appendix C.1: Best fit of the Balmer continuum emission

In the following we show the best fit of the Balmer continuum emission for the targets analyzed here.

Appendix C.2: Accretion luminosity vs stellar luminosity

Here we show the relation between the accretion and stellar luminosity for the targets analyzed here and those in the star-forming regions of Lupus and Chamaeleon I (Fig. C.7).

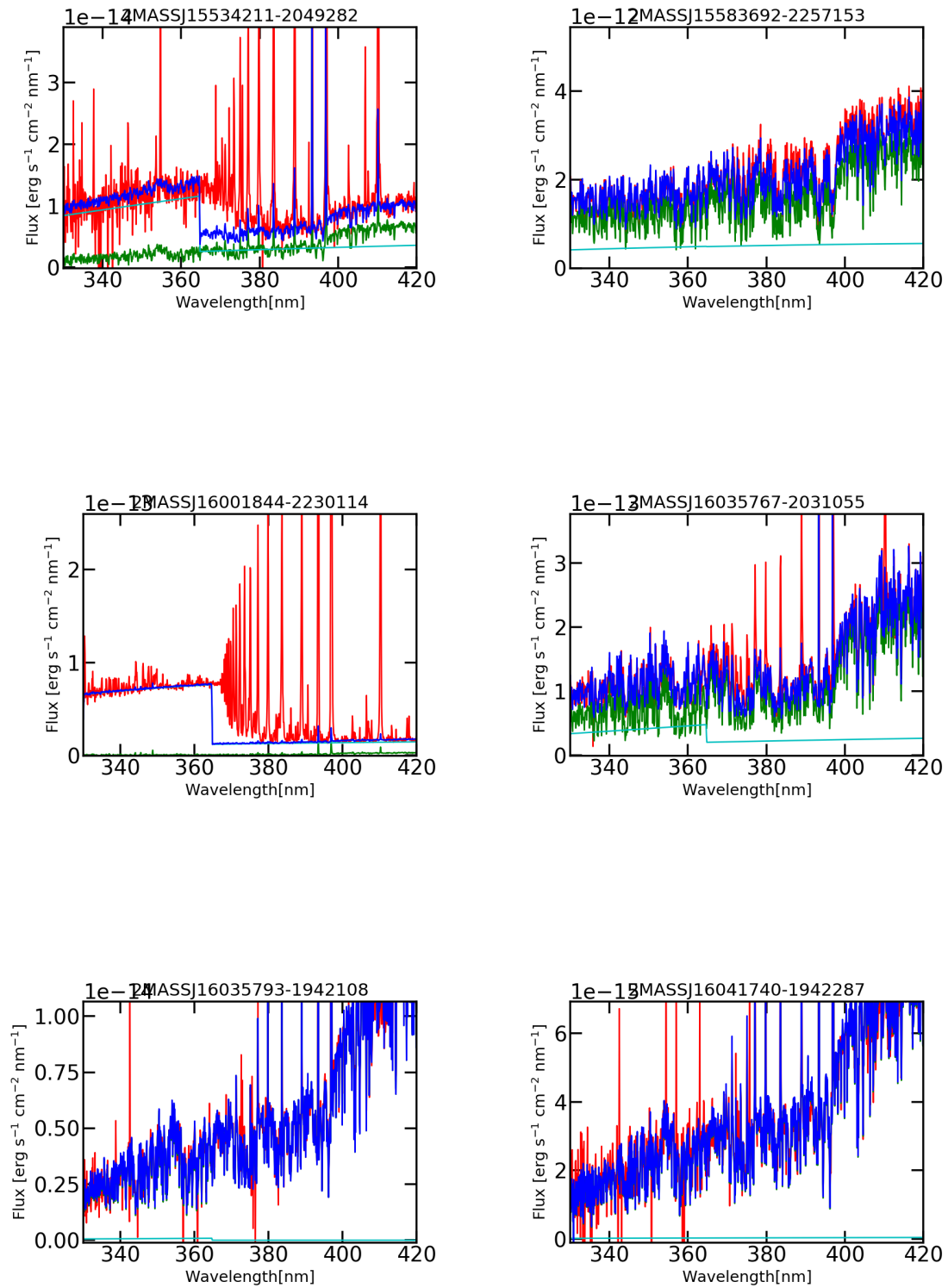


Fig. C.1. The best fit of the continuum emission of the spectrum of the targets is shown in blue together with the dereddened spectrum of the target (red). The best fit is obtained by adding the best fit photospheric template (green) and the slab model (cyan).

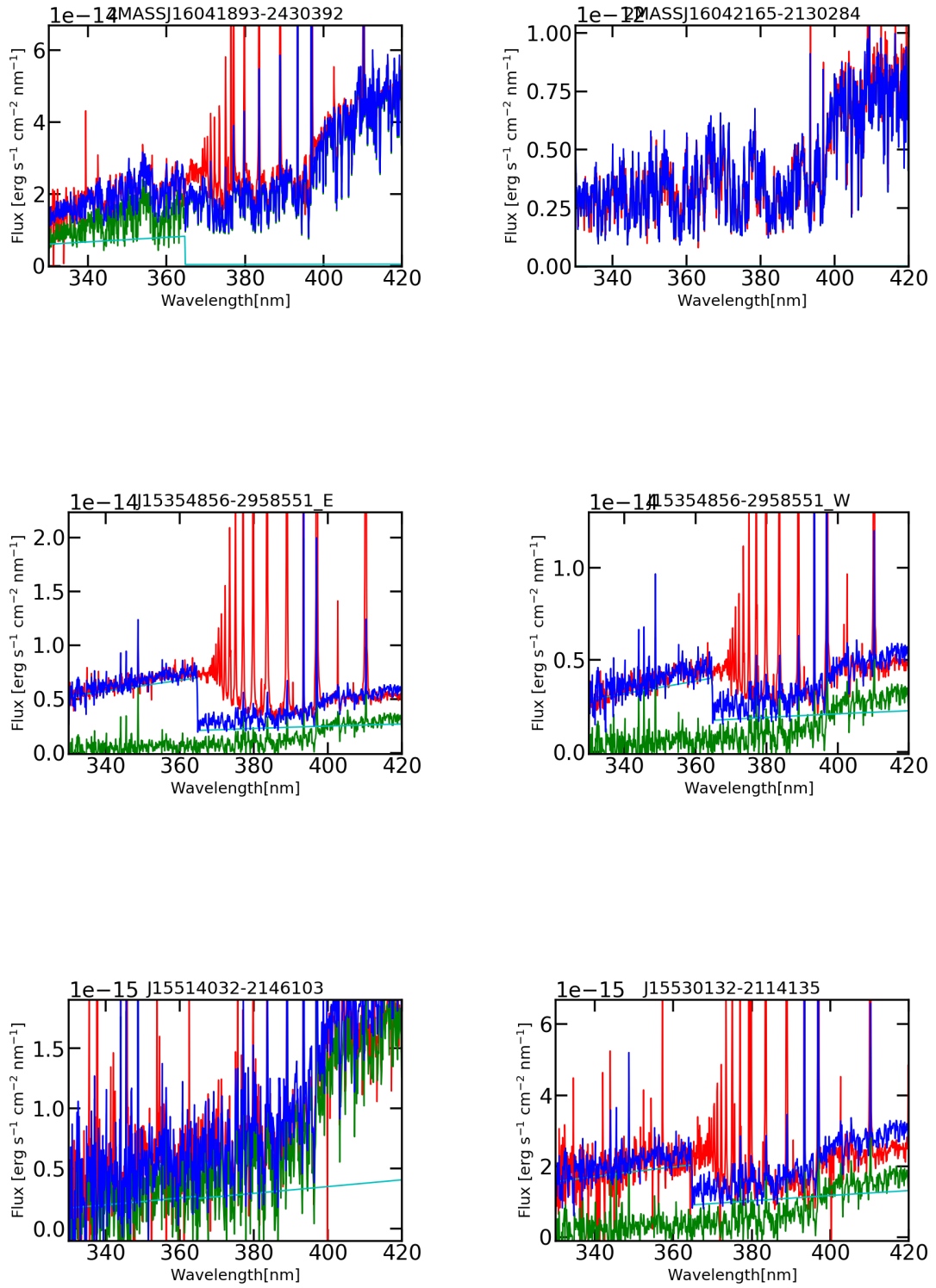


Fig. C.2. The best fit of the continuum emission of the spectrum of the targets is shown in blue together with the dereddened spectrum of the target (red). The best fit is obtained by adding the best fit photospheric template (green) and the slab model (cyan).

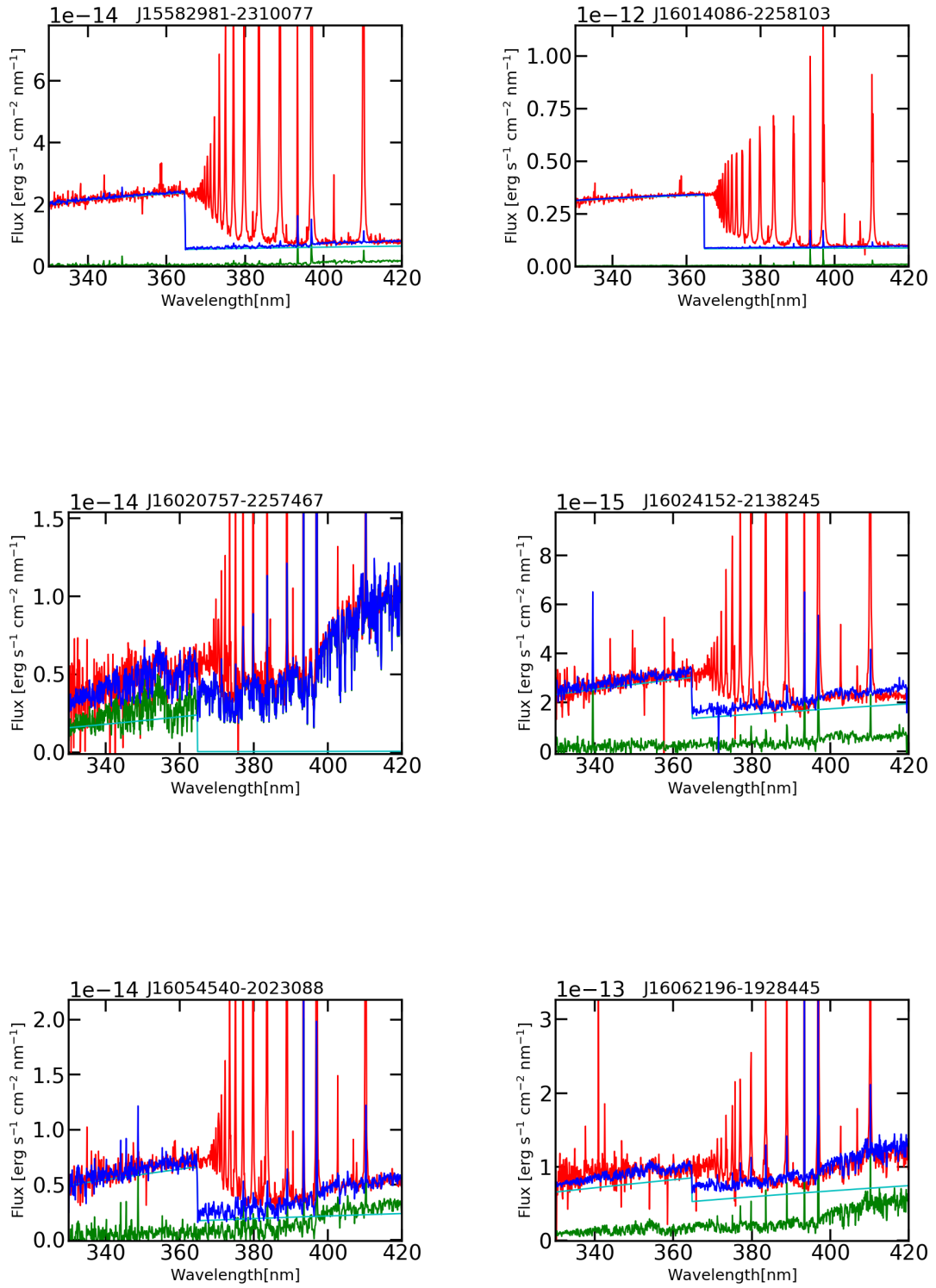


Fig. C.3. The best fit of the continuum emission of the spectrum of the targets is shown in blue together with the dereddened spectrum of the target (red). The best fit is obtained by adding the best fit photospheric template (green) and the slab model (cyan).

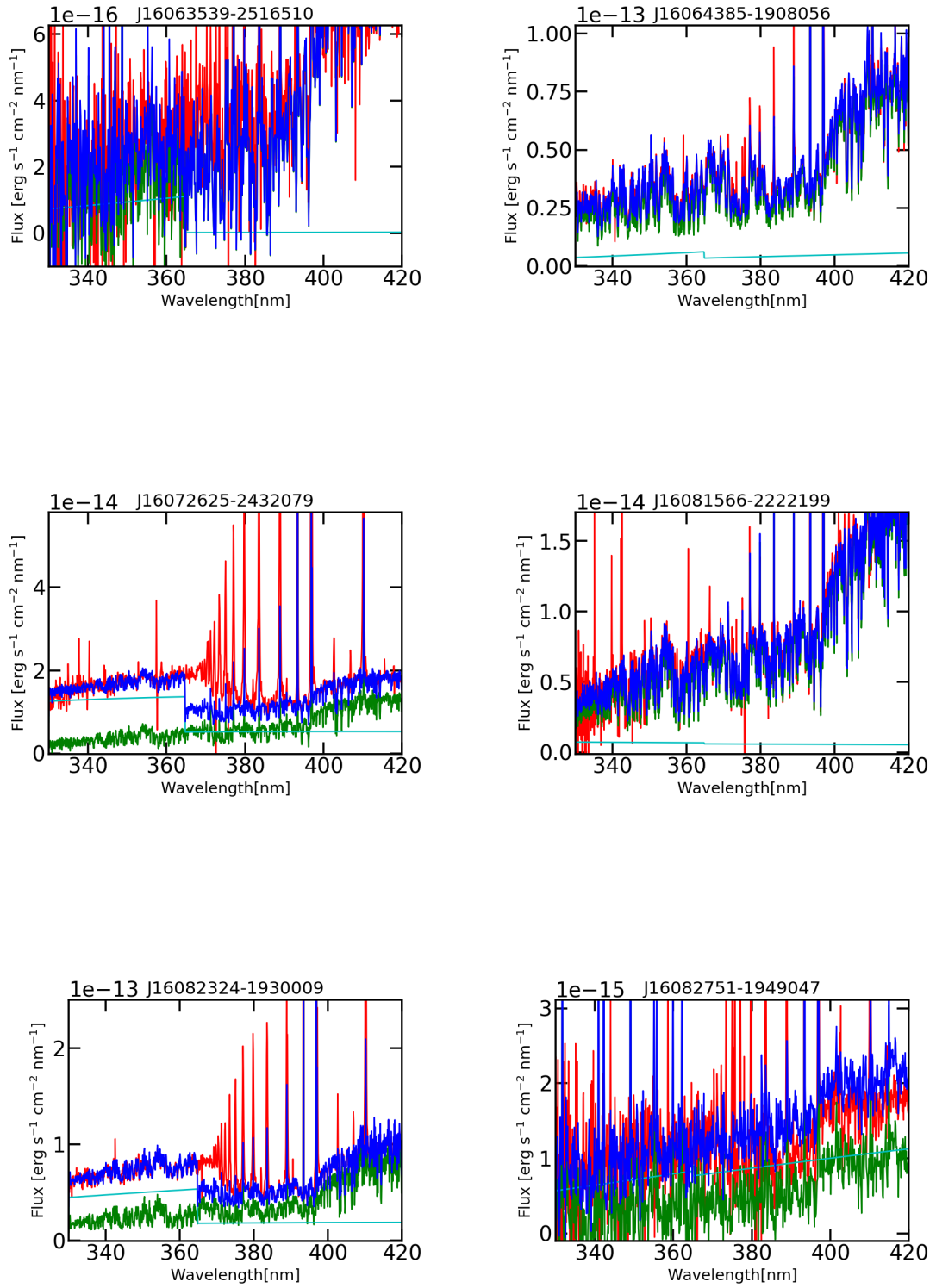


Fig. C.4. The best fit of the continuum emission of the spectrum of the targets is shown in blue together with the dereddened spectrum of the target (red). The best fit is obtained by adding the best fit photospheric template (green) and the slab model (cyan).

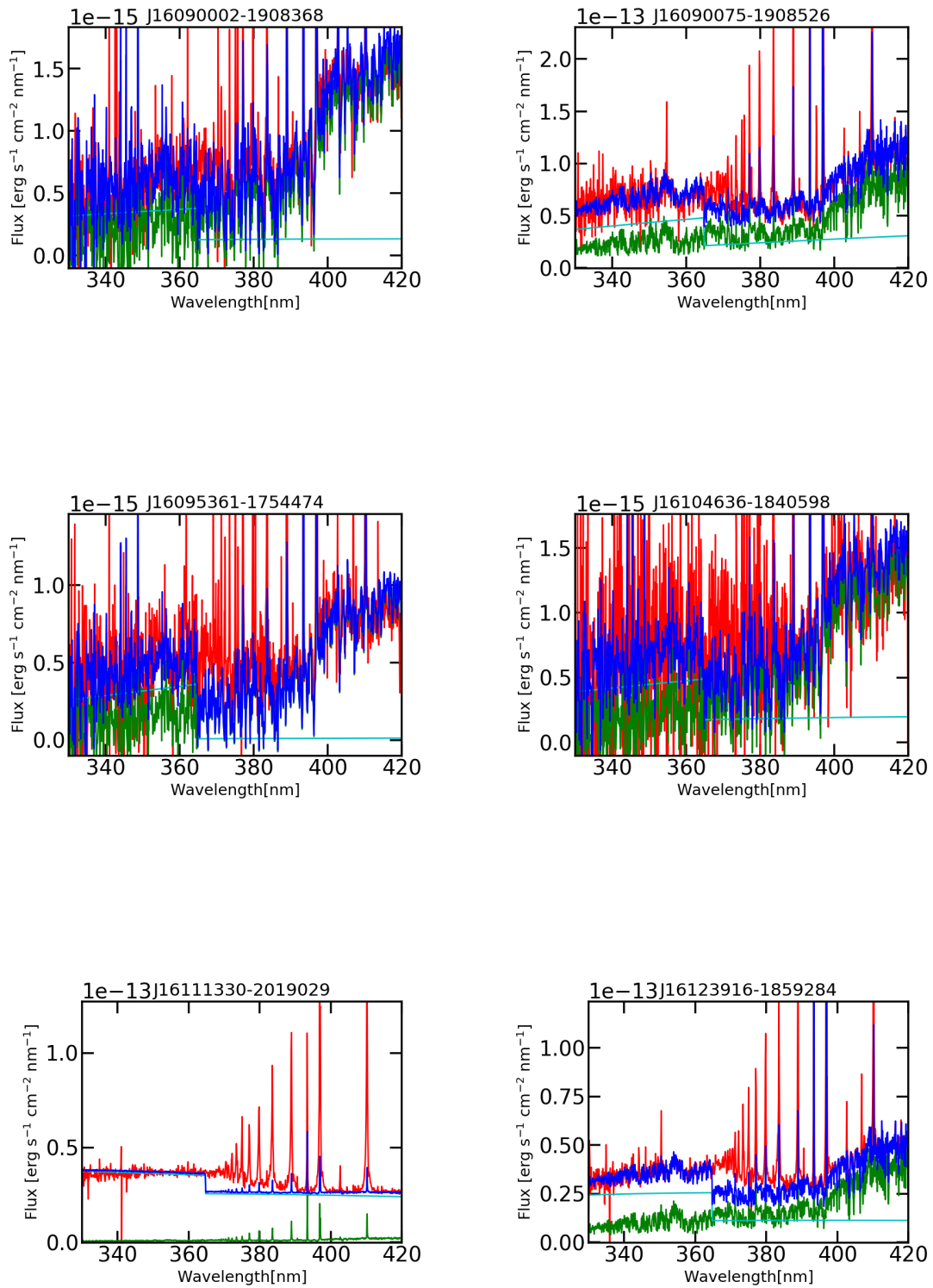


Fig. C.5. The best fit of the continuum emission of the spectrum of the targets is shown in blue together with the dereddened spectrum of the target (red). The best fit is obtained by adding the best fit photospheric template (green) and the slab model (cyan).

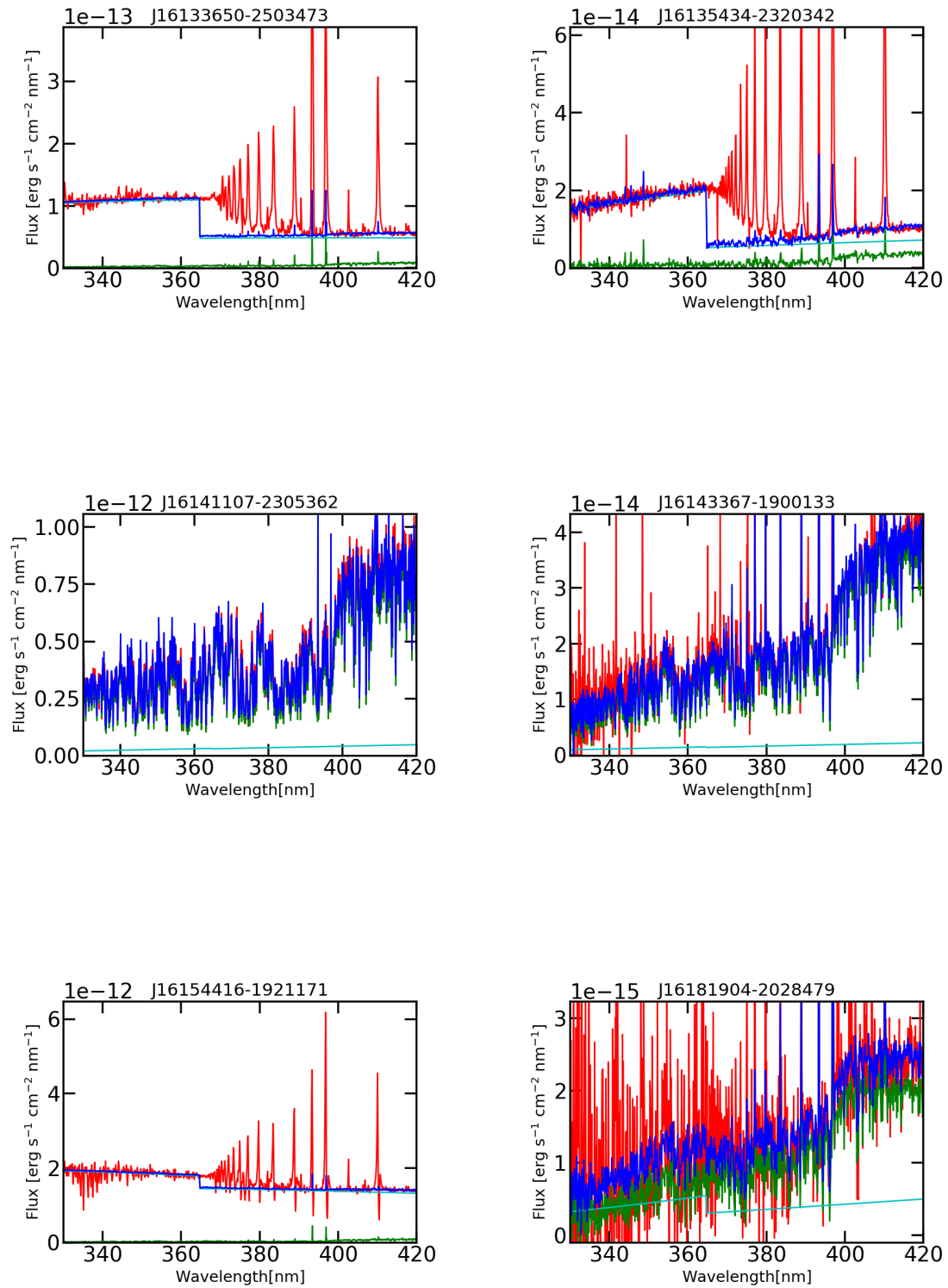


Fig. C.6. The best fit of the continuum emission of the spectrum of the targets is shown in blue together with the dereddened spectrum of the target (red). The best fit is obtained by adding the best fit photospheric template (green) and the slab model (cyan).

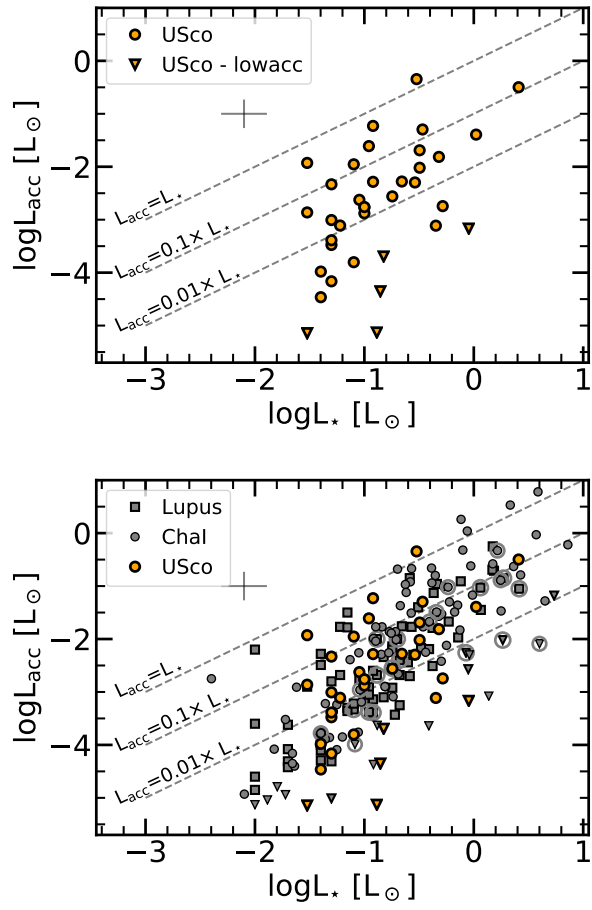


Fig. C.7. Accretion luminosity (from fitter) vs stellar luminosity for the USco targets (upper panel) and for the USco, Lupus, and Chal targets (bottom panel).