



Universiteit  
Leiden  
The Netherlands

## Observations by GMRT at 323 MHz of radio-loud quasars at $z > 5$

Shao, Y.; Wagg, J.; Wang, R.; Carilli, C.L.; Riechers, D.A.; Intema, H.T.; ... ; Menten, K.M.

### Citation

Shao, Y., Wagg, J., Wang, R., Carilli, C. L., Riechers, D. A., Intema, H. T., ... Menten, K. M. (2020). Observations by GMRT at 323 MHz of radio-loud quasars at  $z > 5$ . *Astronomy & Astrophysics*, 641, A85. doi:10.1051/0004-6361/202038469

Version: Accepted Manuscript

License: [Creative Commons CC BY 4.0 license](https://creativecommons.org/licenses/by/4.0/)

Downloaded from: <https://hdl.handle.net/1887/3133816>

**Note:** To cite this publication please use the final published version (if applicable).

# 323 MHz GMRT Observations of Radio-loud Quasars at $z > 5$

Yali Shao<sup>1,2\*</sup>, Jeff Wagg<sup>3</sup>, Ran Wang<sup>2</sup>, Chris L. Carilli<sup>4,5</sup>, Dominik A. Riechers<sup>6,7</sup>, Huib T. Intema<sup>8,9</sup>, Axel Weiss<sup>1</sup>,  
and Karl M. Menten<sup>1</sup>

<sup>1</sup> Max-Planck-Institut für Radioastronomie, Auf dem Hügel 69, 53121 Bonn, Germany

<sup>2</sup> Kavli Institute for Astronomy and Astrophysics, Peking University, Beijing 100871, China

<sup>3</sup> SKA Organization, Lower Withington Macclesfield, Cheshire SK11 9DL, UK

<sup>4</sup> National Radio Astronomy Observatory, Socorro, NM 87801-0387, USA

<sup>5</sup> Cavendish Laboratory, University of Cambridge, 19 J. J. Thomson Avenue, Cambridge CB3 0HE, UK

<sup>6</sup> Department of Astronomy, Cornell University, Space Sciences Building, Ithaca, NY 14853, USA

<sup>7</sup> Max-Planck-Institut für Astronomie, Königstuhl 17, D-69117 Heidelberg, Germany

<sup>8</sup> Leiden Observatory, Leiden University, Niels Bohrweg 2, 2333 CA Leiden, The Netherlands

<sup>9</sup> International Centre for Radio Astronomy Research, Curtin University, GPO Box U1987, Perth, WA 6845, Australia

June 25, 2020

## ABSTRACT

We present Giant Metrewave Radio Telescope (GMRT) 323 MHz radio continuum observations towards thirteen radio-loud quasars at  $z > 5$ , sampling the low frequency synchrotron emission from these objects. Among the twelve targets observed successfully, ten are detected above  $4\sigma$  significance, while two are undetected. All of the detected sources appear as point sources. Combined with previous radio continuum detections from the literature, nine quasars have power-law spectral energy distributions throughout the radio range; for some the flux density drops with increasing frequency while it increases for others. Two of these sources appear to have spectral turnover. For the power-law-like sources, the power-law indices have a positive range between 0.18 and 0.67, and a negative values between  $-0.90$  and  $-0.27$ . For the turnover sources, the radio peaks around  $\sim 1$  and  $\sim 10$  GHz in the rest frame, the optical-thin indices are  $-0.58$  and  $-0.90$ , and the optical-thick indices are 0.50 and 1.20. A magnetic field and spectral age analysis of SDSS J114657.59+403708.6 at  $z = 5.01$  may indicate that the turnover is not caused by synchrotron self-absorption, but rather by free-free absorption by the high density medium in the nuclear region. Alternatively, the apparent turnover may be an artifact of source variability. Finally, we calculate the radio loudness  $R_{2500\text{\AA}}$  for our sample which spans a very wide range from  $12_{-13}^{+13}$  to  $4982_{-254}^{+279}$ .

**Key words.** galaxies: high-redshift — quasars: general — radio continuum: galaxies

## 1. Introduction

High-redshift quasars at  $z > 5$  are critical for probing the physical conditions at the end of the reionization epoch, and for studying the early evolutionary stage of AGN formation and the possible co-evolution of the first supermassive black holes (SMBHs) and their host galaxies. A significant number of quasars have been discovered at  $z > 5$  (e.g., Fan et al. 2006; Jiang et al. 2015; Mazzucchelli et al. 2017). However, only a few of them are classified as radio-loud quasars (e.g., Anderson et al. 2001; Fan et al. 2001; Sharp et al. 2001; Romani et al. 2004; McGreer et al. 2006; McGreer et al. 2009; Willott et al. 2010; Zeimann et al. 2011; Yi et al. 2014; Bañados et al. 2018; Belladitta et al. 2020). High-redshift radio-loud quasars are interesting, as their prominent radio jets should directly relate to the activity of their central SMBHs.

Previous studies of these high-redshift radio-loud quasars at  $z > 5$  focus on their high frequency properties through GHz-observations from 1.4 GHz to 91 GHz (e.g., Romani et al. 2004; Frey et al. 2005; Momjian et al. 2008; Sbarrato et al. 2013; Cao et al. 2014; An et al. 2020). Ten of these have been observed with milli-arcsecond (mas) resolution by the European Very Long Baseline Interferometry (VLBI) Network (EVN) or the Very Long Baseline Array (VLBA). Seven of ten show single-compact or double-structure morphology (Frey et al. 2003, 2005, 2008, 2011; Momjian et al. 2003, 2018; Cao et al. 2014; Gabányi et al. 2015), which together with the steep radio spectrum makes them similar to compact symmetric objects (CSOs). 30% are identified as blazars which have core-jet morphology (Romani et al. 2004; Frey et al. 2010, 2015). These three blazars have been studied from radio to X-ray wavelengths, and even to  $\gamma$ -rays - SDSS J114657.79+403708.6 (hereafter J1146+4037) at  $z = 5.01$  identified by Ghisellini et al. (2014), SDSS J102623.61+254259.5 (hereafter J1026+2542) at  $z = 5.3$  identified by Sbarrato et al. (2012, 2013), and Q0906+6930 at  $z = 5.47$  identified by Romani et al. (2004). Through multi-epoch EVN VLBI observations towards J1026+2542 at  $z = 5.3$ , Frey et al. (2015) detected significant structural change of the jet and therefore estimated the apparent proper motion of three components of the jet. However, there are few observations of these quasars below 1 GHz, except for information from a handful of low frequency sky surveys such as the LOFAR Two-metre Sky Survey (LoTSS; Shimwell et al. 2017), the TIFR GMRT

\* yshao@mpifr-bonn.mpg.de

Sky Survey (TGSS; Intema et al. 2017), and the GaLactic and Extragalactic All-sky Murchison Widefield Array (GLEAM; Hurley-Walker et al. 2017) survey. In this paper, we extend the radio information of these high-redshift radio-loud quasars at  $z > 5$  to lower frequencies through 323 MHz GMRT observations.

One of the outstanding problems in the study of AGNs is understanding the origin and evolution of the radio emission. The merger or accretion events in the host galaxies can transfer fuel to feed the central black holes (BHs), which are thought to give rise to the radio activity (e.g., Chiaberge & Marconi 2011). As a consequence, the radio emission evolves in a dense and possibly inhomogeneous ambient medium which can influence BH growth at least at the early stages. The ideal targets for better understanding this problem are the young radio sources, whose radio lobes still reside within the innermost region of the host galaxy.

CSOs are very powerful ( $P_{1.4\text{GHz}} > 10^{25} \text{ W Hz}^{-1}$ ), compact (linear size of 50–100 pc), and young ( $\lesssim 10^4$  yr) objects with a rather symmetric radio structure and convex synchrotron radio spectra (Wilkinson et al. 1994; Murgia 2003; Polatidis & Conway 2003). The characterized convex synchrotron radio spectrum peaks at around 100 MHz in the case of compact steep spectrum (CSS) sources, at about 1 GHz in the case of GHz-peaked spectrum (GPS) objects, and up to a few GHz (e.g., 5 GHz) in the case of high frequency peakers (HFPs; Dallacasa et al. 2000). The turnover is explained as synchrotron self-absorption (SSA) affecting in a small radio emitting region or the free-free absorption (FFA) by the dense ambient medium. In a ‘young scenario’, as the source grows, the inner-region (maybe a tiny radio lobe) expands, and as a result, the turnover frequency moves to lower frequencies. In this scenario, the HFPs are newborn radio sources that will develop into extended radio sources (e.g., FR I, FR II) after evolving through GPS and CSS stages. It is possible that the activity is recurrent in at least some sources: there have been observations of faint extended emission around a few GPS sources (e.g., Baum et al. 1990; Stanghellini et al. 1990; Marecki et al. 2003). The extended emission could be a relic of an earlier active period, into which the reborn radio jets are expanding. Another popular explanation for the turnover and compact natures of CSS, GPS and HFP is the ‘frustration’ hypothesis. It argues that these sources are confined in small spatial-scale and high density environments, and as a consequence the radio emission is frustrated by the abundant nuclear plasma (van Breugel et al. 1984; Peck et al. 1999; Tingay & de Kool 2003; Callingham et al. 2015; Tingay et al. 2015). In addition, An & Baan (2012) also proposed that young sources with strong constant AGN power breaking through the dense inner region of the host galaxy could result in the compact morphology and the turnover properties of CSOs.

However, searching for and investigating the onset of radio AGNs through CSOs especially GPS/HFPs at low redshifts requires high frequency (e.g.,  $> 5$  GHz for HFPs) observations. In contrast, considering that for high-redshifts, the spectral turnover shifts to lower frequencies, high-redshift radio-loud quasars make a unique sample for low frequency radio studies.

In this paper, we report on 323 MHz GMRT observations toward thirteen radio-loud quasars at  $z > 5$  that were made to investigate their low frequency synchrotron properties and better sample their radio spectra. This paper is organized as follows. In Section 2 we describe our sample, the GMRT observations and the data reduction. In section 3 we summarize previous studies of each target in our sample and present the new GMRT measurements. In Section 4, we apply different spectral models to the observed radio spectra, and investigate the possible origin of the spectral turnover considering magnetic field strength and spectral age for J1146+4037. In addition, we also present the radio loudness of our sample in the conventional definition with predicted 5 GHz flux density from our spectral models. Finally in Section 5, we present a short summary. Throughout this work we assume a  $\Lambda$ CDM cosmology with  $H_0 = 71 \text{ km s}^{-1} \text{ Mpc}^{-1}$ ,  $\Omega_M = 0.27$  and  $\Omega_\Lambda = 0.73$  (Spergel et al. 2007).

## 2. Observations and Data Reduction

Our sample consists of thirteen radio-loud quasars at  $z > 5$ . Ten of them are known to be the brightest 1.4 GHz quasars at the highest redshifts. Three of our targets have been identified by cross-matching optical wavelength quasar catalogues with the Very Large Array (VLA) Faint Images of the Radio Sky at Twenty-Centimeters (FIRST; Helfand et al. 2015) catalogue and the VLA high-resolution radio survey of SDSS strip 82 (Hodge et al. 2011) catalogue: SDSS J161425.13+464028.9 (hereafter J1614+4640), SDSS J223907.56+003022.6 (hereafter J2239+0030) and WFS J224524.20+002414.0 (hereafter J2245+0024). We made GMRT 323 MHz radio continuum observations to study the low frequency synchrotron properties and better sample their radio spectra to understand the evolutionary properties of the first quasar systems approaching the end of the cosmic reionization. Table 1 and 2 present our sources summarizing the archival radio data.

### 2.1. 323 MHz GMRT Observations

The 323 MHz GMRT observations were carried out 2015 November 9 and 10 (proposal code: 29\_046; PI: Jeff Wagg). We first observed a flux calibrator - 3C48 for 15 minutes, followed by 5–20 minutes observations on a bright phase calibrator within  $10^\circ$  of our targets. Then we performed 20–50 minutes observations on the target, after which we observed the phase calibrator again, followed by another 20–50 minutes observations of the next target before one final observation of the phase calibrator. The adopted phase calibrators are list in Table 3. We recorded full polarization with a total band width of 32 MHz. The theoretical synthesized beam size is  $9''$ , and the observed one for each target is list in Table 3.

### 2.2. Data Reduction

The data reduction was conducted with the package - Source Peeling and Atmospheric Modeling (SPAM<sup>1</sup>; Intema 2014a,b). It is an Astronomical Image Processing System (AIPS<sup>2</sup>; Greisen 2003) extension based on Python, which can work on high-resolution, low frequency radio interferometric data efficiently and systematically. We followed the standard SPAM pipeline which

<sup>1</sup> <http://www.intema.nl/doku.php?id=huibintemaspm>

<sup>2</sup> <http://www.aips.nrao.edu/index.shtml>

contains direction-dependent calibration, modeling and imaging for correcting mainly ionospheric dispersive delay (the detail can be seen in Intema et al. 2017).

### 3. Results

For twelve of our radio-loud quasars at  $z > 5$  we obtained useful data. However, the data for one source - SDSS J013127.34–032100.1 (hereafter J0131–0321) is contaminated by serious radio frequency interference (RFI). Ten of twelve are detected above  $4\sigma$ , while the remaining two are not detected, and we present their  $3\sigma$  upper limits. The GMRT 323 MHz measurements and images are presented in Table 3 and Figure 1. Note that we only present formal statistical errors from Gaussian fitting in Table 3. In the analysis part (Section 4), we also consider another 10% calibration errors (Chandra et al. 2004) for our 323 MHz GMRT data.

**J0131–0321** - It is an optically luminous radio-loud quasar at  $z = 5.18$  discovered by Yi et al. (2014) using the Lijiang 2.4-m and Magellan telescopes. They measured the BH mass to be  $2.7 \times 10^9 M_\odot$  with  $i$ -band magnitude of 18.47 mag. It is the second most luminous object in our sample with 1.4 GHz flux density of  $33.69 \pm 0.12$  mJy from the VLA FIRST (Helfand et al. 2015; observation date: 2009 March 21; angular resolution:  $\sim 5''4$ ). Ghisellini et al. (2015) conducted a spectral energy distribution (SED) fit with an accretion disk, a torus and a jet to constrain the viewing angle  $\theta$  of the jet, which is very close to the line of sight (e.g.,  $\theta \sim 3\text{--}5^\circ$ ). Gabányi et al. (2015) observed this target on 2014 December 2 using EVN VLBI at 1.7 GHz. They found a single compact radio component with a flux density of  $64.40 \pm 0.30$  mJy, and estimated a relatively high brightness temperature ( $T_B \gtrsim 2.8 \times 10^{11}$  K) and moderate Doppler boosting factor ( $\gtrsim 6$ ). In addition, they noted a significant flux density variation by comparing the FIRST 1.4 GHz and VLBI 1.7 GHz measurements, which together suggest that it may be a blazar.

Our new GMRT observations failed due to severe RFI. However, we found an obvious signal  $> 5\sigma$  in the TGSS (Intema et al. 2017) database at 150 MHz, which is not shown in the official catalogue due to their  $7\sigma$  selection criterion. We presented the 150 MHz continuum image in the left panel of Figure 2 which was observed on 2016 March 15. It appears as a point source. We measured the flux density with the Common Astronomy Software Applications (CASA<sup>3</sup>) 2D Gaussian tool, which shows a flux density of  $25.70 \pm 4.70$  mJy. This is consistent with that measured by the Python Blob Detector and Source Finder (PyBDSF<sup>4</sup>).

**SDSS J074154.72+252029.6 (hereafter J0741+2520)** - McGreer et al. (2009) discovered this target by combining data from the FIRST radio survey and the SDSS. The  $i$ -band magnitude is 18.45 mag at  $z = 5.194$ .

We detected the 323 MHz radio continuum emission for this target with a peak flux density of  $1.73 \pm 0.09$  mJy beam<sup>-1</sup>. It is an unresolved target.

**SDSS J083643.85+005453.3 (hereafter J0836+0054)** - Fan et al. (2001) selected this target from multicolor imaging data of SDSS. It has a strong and broad yet partially absorbed Ly $\alpha$  emission line, which indicates a redshift of 5.82. Stern et al. (2003) observed this target using FLAMINGOS on the Gemini-South 8-m telescope and calculated a slightly lower redshift of 5.774 from broad emission lines of C IV  $\lambda 1549$  Å and C III  $\lambda 1909$  Å. The 1.4 GHz flux density is  $1.11 \pm 0.15$  mJy from FIRST (Helfand et al. 2015; observation date: 1998 August; angular resolution:  $\sim 5''4$ ),  $2.5 \pm 0.5$  mJy from NVSS (Condon et al. 1998; observation date: 1993 November 15; angular resolution:  $\sim 45''$ ),  $1.75 \pm 0.04$  mJy from VLA A-configuration (Petric et al. 2003; observation date: 2002 March 6; angular resolution:  $\sim 1''5$ ), and  $1.96 \pm 0.31$  mJy from VLA B-configuration (Frey et al. 2005; observation date: 2003 October 5; angular resolution:  $\sim 6''$ ). This source shows significant variability though  $\sim 10$  years of monitoring. Frey et al. (2003) carried out VLBI 1.6 GHz observations at  $\sim 10$ -mas angular resolution, and found this target to be compact. Frey et al. (2005) also observed this source at mas resolution VLBI Network at 5 GHz, which confirms that it is a compact source with a flux density of  $0.34 \pm 0.04$  mJy. In addition, they also conducted an almost simultaneous VLA B-configuration arcsecond resolution observations at 5 GHz ( $f_\nu = 0.43 \pm 0.06$  mJy) towards this target. By comparing the 5 GHz radio emission from observations at two different resolutions, they constrained the radio emission to arise from within the central 40 pc.

This target is unresolved by our 323 MHz GMRT observations and has a peak flux density of  $1.94 \pm 0.17$  mJy beam<sup>-1</sup>. The low surface brightness  $6\sigma$  tail-like structure showing in the Figure 1 of this target may be due to a low-redshift radio source in the foreground at a projected distance of  $\sim 10''$  which is resolved by Frey et al. (2005).

**SDSS J091316.56+591921.5 (hereafter J0913+5919)** - Anderson et al. (2001) reported this target to have a relatively narrow Ly $\alpha$  emission line at a redshift of  $z = 5.11$ . The redshift measurement was improved to 5.1224 by Hewett & Wild (2010) though investigating the empirical relationships between redshifts and multiple line emissions. The high resolution 1.4 GHz VLBA observations (Momjian et al. 2003) revealed a compact radio property. Motivated by the compact nature and the narrow Ly $\alpha$  line, Carilli et al. (2007) searched for the redshifted H I 21 cm absorption line to this object with GMRT, but unfortunately found nothing.

This object is a point source in our new GMRT observations. The 323 MHz peak flux density is  $9.80 \pm 0.12$  mJy beam<sup>-1</sup> which makes it the second strongest detection in our sample.

**J1026+2542** - This quasar was selected from the SDSS catalogue with a redshift of 5.28. It is the strongest radio-loud quasar in our sample. The flux density at 1.4 GHz from VLA FIRST (Helfand et al. 2015; observation date: 1995 November 22; angular resolution:  $\sim 5''4$ ) is  $239.44 \pm 0.14$  mJy. The VLA NVSS lists a similar  $S_{1.4\text{GHz}} = 256.9 \pm 7.7$  mJy (Condon et al. 1998; observation date: 1993 December 6; angular resolution:  $\sim 45''$ ). Sbarrato et al. (2012, 2013) proposed that it is a blazar by constructing a full SED analysis the radio up to  $\gamma$ -ray regimes. They yielded a small jet viewing angle of  $\sim 3^\circ$  with respect to the line of sight, and significant Doppler boosting with a large bulk Lorentz factor  $\sim 13$ . Frey et al. (2015), for this object, obtained the first directly jet proper motions (up to  $\sim 0.1$  mas yr<sup>-1</sup>) in  $z > 5$  blazars with EVN VLBI dual-frequency (1.7 and 5 GHz) observations combined with VLBA imaging by Helmboldt et al. (2007). The lower limit they obtained for the core brightness temperature,  $\sim 2.3 \times 10^{12}$  K, is consistent with the blazar nature.

<sup>3</sup> <https://casa.nrao.edu/>

<sup>4</sup> <http://www.astron.nl/citt/pybdsf/>

This quasar is unresolved in the new GMRT 323 MHz observations with the highest intensity among our sample with peak flux density of  $317.72 \pm 0.33$  mJy beam<sup>-1</sup>. We also searched the GMRT TGSS data (Intema et al. 2017) and present the 150 MHz image in the right panel of Figure 2 which was observed on 2016 March 15. In addition, we find 20 separate flux density measurements across 72–231 MHz from the GLEAM (Hurley-Walker et al. 2017) survey which are listed in Table 2.

**SDSS J103418.65+203300.2 (hereafter J1034+2033)** - SDSS discovered this quasar at a redshift of 5.0150.

It is unresolved in our new 323 MHz GMRT observations with a peak flux density of  $3.03 \pm 0.11$  mJy beam<sup>-1</sup>.

**J1146+4037** - This quasar is selected from the SDSS catalogue with a redshift of 5.009 which has been improved to 5.0059 by Hewett & Wild (2010). Frey et al. (2010) observed this target with mas angular resolution using VLBI at 1.6 and 5 GHz, and found that it is a compact source.

It is a point source in our 323 MHz observations with  $S_{323\text{MHz, peak}} = 3.05 \pm 0.07$  mJy beam<sup>-1</sup>.

**FIRST J1427385+331241 (hereafter J1427+3312)** - McGreer et al. (2006) discovered this quasar by matching sources from the FLAMINGOS Extragalactic Survey (FLAMEX) IR survey to the FIRST survey radio sources with NDWFS counterparts. It is a broad absorption line quasar with a redshift of 6.12 which makes it the second highest redshift quasar in our sample. Momjian et al. (2008) presented 1.4 GHz VLBA observations, and found two mas-scale resolved components with a projected distance of 31 mas (174 pc). They assumed a CSO model which reveals a kinematic age of  $\sim 10^3$  yr. Frey et al. (2008) studied the compact radio structure of this target with a resolution of a few mas with EVN VLBI at 1.6 and 5 GHz. They also detected the double structure with a separation of 28.3 mas (160 pc), which confirms that it is a young CSO ( $\leq 10^4$  yr).

By fitting the 323 MHz GMRT image of this target, the CASA 2D Gaussian fit tool gives a deconvolved source size of  $(7''.89 \pm 2''.41) \times (1''.85 \pm 0''.49)$ , an integrated flux density of  $4.51 \pm 0.22$  mJy, and a peak flux density of  $3.96 \pm 0.10$  mJy beam<sup>-1</sup>. That the deconvolved major axis lies roughly along the synthesized beam major axis makes this size determination questionable and in the following we treat this target as a point source. This target is included in the VLA 325 MHz image of the Bootes field (Coppejans et al. 2015), with  $S_{325\text{MHz}} = 4.80 \pm 0.80$  mJy, which is consistent with our 323 MHz measurement.

**CFHQS J142952.17+544717.6 (hereafter J1429+5447)** - Willott et al. (2010) discovered this quasar in the Canada-France-Hawaii Telescope Legacy Survey (CFHTLS) Wide W3 region. It has strong continuum but a weak Ly $\alpha$  emission line at  $z = 6.21$ , meaning that it is the most distant object in our sample. Wang et al. (2011) detected both CO (2–1) line and its underlying continuum. The CO line emission shows two prominent peaks that are separated with  $1''.2$  (6.9 kpc). A Gaussian fit to the CO spectrum yielded a source redshift of 6.1831. Frey et al. (2011) detected a single dominant component at both 1.4 and 5 GHz by VLBI towards this target. It was slightly resolved with mas scale resolution within  $<100$  pc. The derived brightness temperature on the order of  $10^8$  K, which supports the AGN origin of the radio emission of this quasar.

This target is a point source with a peak flux density of  $4.91 \pm 0.16$  mJy beam<sup>-1</sup> in our 323 MHz observations from the GMRT.

**J1614+4640** - This target is an SDSS quasar with a redshift of 5.31.

J1614+4640 is unresolved in our 323 MHz GMRT observations with a peak flux density of  $0.94 \pm 0.09$  mJy beam<sup>-1</sup>.

**SDSS J222843.54+011032.2 (hereafter J2228+0110)** - Zeimann et al. (2011) discovered this radio-loud quasar by matching optical detections of the deep SDSS Stripe 82 with their radio counterparts in the Stripe 82 VLA Survey. It is an optically faint but radio bright quasar at  $z = 5.95$ .

It is too faint to be detected in our 323 MHz GMRT observations. The resulted image rms noise level is  $0.15$  mJy beam<sup>-1</sup>, and we adopt  $3\sigma$  rms as the upper limit in our radio spectrum analysis.

**J2239+0030** - This target comes from the SDSS catalogue.

It is a point source in our GMRT survey with a peak flux density of  $1.55 \pm 0.20$  mJy beam<sup>-1</sup>.

**J2245+0024** - Sharp et al. (2001) discovered this target in the Public Isaac Newton Group Wide Field Survey with a redshift of 5.17. It has a strong and highly irregular Ly $\alpha$  emission line profile.

We did not detect this target in our 323 MHz GMRT observations. The final image rms noise level is  $0.12$  mJy beam<sup>-1</sup>, and we consider  $3\sigma$  rms as the upper limit in our radio spectrum analysis.

## 4. Analysis and Discussion

### 4.1. Radio Spectral Modeling

To describe the radio spectrum properties of our sample, we adopt two different spectral models in this paper. For our fitting, we use the emcee<sup>5</sup> package (Foreman-Mackey et al. 2013) in the case of more than two data points, and a least-square method in the case of only two data points.

Firstly, we use the standard non-thermal power-law model:

$$S_\nu = a\nu^{\alpha_{\text{pl}}}, \quad (1)$$

where  $a$  represents the amplitude of the synchrotron spectrum,  $\alpha_{\text{pl}}$  shows the synchrotron spectral index, and  $S_\nu$  is the flux density at frequency  $\nu$ , in MHz.

In addition, the following generic curved model was used to characterize the entire spectrum of a peaked-spectrum source:

$$S_\nu = \frac{S_p}{(1 - e^{-1})} (1 - e^{-(\nu/\nu_p)^{\alpha_{\text{thin}} - \alpha_{\text{thick}}}}) \left(\frac{\nu}{\nu_p}\right)^{\alpha_{\text{thick}}}, \quad (2)$$

where  $\alpha_{\text{thick}}$  and  $\alpha_{\text{thin}}$  are the spectral indices in the optically thick and optically thin parts of the spectrum, respectively.  $S_p$  is the flux density at the peak frequency  $\nu_p$  (Snellen et al. 1998). This equation only performs a fit to the spectra on regions at the lower

<sup>5</sup> <http://dfm.io/emcee/current/>

and the higher sides of the peak, but cannot discriminate between the underlying absorption mechanism (e.g. SSA or FFA) causing the spectral turnover.

Nine sources in this study show no clear evidence for spectral curvature (see Figure 3), so we only fit the non-thermal power-law model, and present the fitted results in Table 4. Four of nine show increasing flux density with increasing frequency and have power-law indices between 0.18 and 0.67. The rest exhibit power-law indices between  $-0.90$  and  $-0.27$ . Two quasars (J2228+0110 and J2245+0024) do not have enough data, so we did not attempt any spectral model fit to their data.

J1026+2542 and J1146+4037 show evidence of a spectral turnover. The fitted optically-thin and -thick power-law indices are  $-0.58$  and  $0.50$  in the case of J1026+2542,  $-0.90$  and  $1.20$  in the case of J1146+4037. The turnover frequencies are  $\sim 234$  MHz ( $\sim 1.5$  GHz in the rest frame) and  $\sim 1.8$  GHz ( $\sim 11.2$  GHz in the rest frame) for J1026+2542 and J1146+4037, respectively. These make these targets GPS/HFP-like sources. The fitted results can be seen in Figure 4 and Table 4.

#### 4.2. The Origin of the Spectral Turnover

Two targets (J1026+2542 and J1146+4037) of our sample show a possible spectral turnover. The origin of the spectral turnover can be investigated considering the magnetic field and the spectral age. The difficulties are determining the turnover frequency and measuring the source size at the turnover frequency. We found mas-resolution observations at the frequency near the turnover frequency for J1146+4037 in a published paper (Frey et al. 2010).

**Magnetic field** - In this work, we consider two methods to estimate the magnetic field strength.

An indirect way to estimate the magnetic field of compact radio sources is to assume that the radio emission is in a near equipartition of energy between the radiating particles and the magnetic field (Pacholczyk 1970). Although this condition is assumed in many evolutionary models, there is no a priori reason to believe that magnetic fields in radio sources are in equipartition. Orienti & Dallacasa (2008, 2012) supported this hypothesis by studying the equipartition magnetic field in a number of HFPs. In this work, we follow their method by assuming an ellipsoidal geometry with a filling factor of unity by means of the standard formulae in Pacholczyk (1970), assume that proton and electron energies are equal. Then the equipartition magnetic field strength can be determined by Equations 1–3 in Orienti & Dallacasa (2012), which uses the 8.4 GHz luminosity and source size, but has a weaker dependence on other measured quantities that were poorly constrained by physical parameters.

A direct way to measure the magnetic field is by means of the spectral parameters for radio sources that have convex spectra. If the spectral peak is produced by SSA, we can compute the magnetic field using observable quantities only. The main difficulty in adopting this method is the uncertainty in determining source parameters at the turnover frequency, which will limit the accuracy of the magnetic field estimate. However, this method may be used for GPS/HFP sources. The peak frequency around a few GHz allows sampling both the optically-thick and -thin parts of the spectrum by multifrequency high resolution observations especially for high redshift sources, leading to a fairly accurate estimate of the peak parameters. Under the SSA assumption, the magnetic field  $H$  can be measured directly from the spectral peak parameters - the peak frequency  $\nu_p$  in units of GHz in the observed frame, and the corresponding flux density  $S_p$  in units of Jy in the observed frame, and source angular sizes  $\theta_{\text{maj}}$  and  $\theta_{\text{min}}$  in units of mas at the turnover (Kellermann & Pauliny-Toth 1981):

$$H \sim f(\alpha)^{-5} \theta_{\text{maj}}^2 \theta_{\text{min}}^2 \nu_p^5 S_p^{-2} (1+z)^{-1}. \quad (3)$$

We adopt  $f(\alpha) \sim 8$  ( $\alpha = -0.5$ ), as  $f(\alpha)$  weakly depends on  $\alpha$  (Kellermann & Pauliny-Toth 1981).

In the case of J1026+2542, the spectral turnover appears in the low frequency region (i.e.,  $< 300$  MHz), which is dominated by the data from the GLEAM survey (Hurley-Walker et al. 2017). These data were observed simultaneously. Thus, here we may be observing a real turnover, not one that is mimicked by the blazar variability. As there are no data to constrain the source size at the peak frequency towards this target, we can not derive any information on the magnetic field.

To derive the equipartition magnetic field of J1146+4037, we predict the rest frame 8.4 GHz (redshifted to 1.4 GHz at  $z = 5.0059$ ) flux density from our spectral model. However, there is no source size measurement at 1.4 GHz. We make use of the full width at half maximum (FWHM) source size of  $0.74 \pm 0.01$  mas derived by the Gaussian fit from 5 GHz VLBI mas angular resolution observations (Frey et al. 2010). Note that in our calculations, we assume a source size that is 1.8 times larger than the FWHM, following the approach of Readhead (1994) and Orienti & Dallacasa (2008). The derived equipartition magnetic field is  $34_{-7}^{+8}$  mG. It is within the range of the equipartition magnetic fields of 17 HFP radio sources (7–60 mG; quasars and galaxies at  $0.22 < z < 2.91$ ; Orienti & Dallacasa 2012) and 5 HFPs at  $0.084 < z < 1.887$  (18–160 mG; Orienti & Dallacasa 2008). The magnetic field calculated from the turnover information listed in Table 4 is  $1.8_{-2.7}^{+2.3}$  G assuming an SSA origin with Equation 3, however the uncertainty is very large. The large uncertainty is caused by the fact that we only have four data points to constrain the turnover information, and we do not have a source size measurements at the turnover frequency but rather assume the source size measured at another frequency. More data taken in other wavelength bands are needed to meaningfully constrain the turnover peak, and mas resolution observations at the peak frequency are needed to give reliable magnetic field strength measurements. It may indicate that the turnover is not caused by SSA, by comparing the large magnetic field strength measured from the spectral turnover ( $1.8_{-2.7}^{+2.3}$  G) with the equipartition magnetic field strength ( $34_{-7}^{+8}$  mG). As J1146+4037 is a strong blazar, the turnover may be caused by its strong variability. Another possible explanation for the spectral turnover is that high density plasma in the nuclear region attenuates the radio emission from the central active black hole. High resolution interstellar medium observations of the nuclear region of this target may address the latter issue.

**Spectral age** - The age may be the most critical parameter for understanding the nature of these intrinsically compact sources. In the ‘young scenario’, the HFPs are interpreted as young radio sources, and they will evolve into extended radio sources by inner region expanding, where the SSA is responsible for the curvature of their spectrum. A relationship between the rest frame peak frequency and the projected linear size (e.g., O’Dea & Baum 1997) indicates that the turnover frequency is related to the source

dimension, and thus to the source age. A method known as ‘spectral aging’ relates the curvature of the synchrotron spectrum to the age of the radiating particle (Kardashev et al. 1962; Jaffe & Perola 1974), where synchrotron losses first use up high-energy electron populations, resulting a steepening in the emission spectrum:

$$t_{\text{syn}} = 5.03 \times 10^4 H^{-1.5} [(1+z)\nu_p]^{-0.5} \text{ yr}, \quad (4)$$

where the radiative age ( $t_{\text{syn}}$ ) in units of years, the magnetic field ( $H$ ) in units of mG and the break frequency ( $\nu_p$ ) in units of GHz.  $z$  is the source redshift (Murgia 2003).

Based on the SSA assumption, the derived radiative lifetime of the electron population is 0.2-year adopting  $H = 1.8$  G for J1146+4037 by Equation 4. The estimated time scale is too short if the turnover is due to SSA. The turnover we observed may be due to FFA or source variability. The FFA origin is consistent with the idea that the smallest sources (i.e., HFPS) reside within the innermost region of the host galaxy, characterized by an extremely dense and inhomogeneous ambient medium of high electron density.

In the case of the rest targets in our sample, we also have future VLA high frequency observations and uGMRT low frequency observations, in order to investigate the possible spectral turnover feather (turnover frequency and source intensity at spectral turnover).

### 4.3. Radio Loudness

Most previous characterizations of an extragalactic radio source as ‘radio loud’ were based on 1.4 GHz fluxes and simply assumed a power-law. However, with the new GMRT observations here, we can directly measure the spectral indices, and extrapolate the flux density at rest frame 5 GHz, especially for sources that have an increasing power-law radio spectra.

In our work, following Stocke et al. (1992) and Kellermann et al. (1989) we consider two definitions of radio loudness.

$$R_{2500 \text{ \AA}} = \frac{S_{5 \text{ GHz}}}{S_{2500 \text{ \AA}}}, \quad (5)$$

$$R_{4400 \text{ \AA}} = \frac{S_{5 \text{ GHz}}}{S_{4400 \text{ \AA}}}, \quad (6)$$

where  $S_{2500 \text{ \AA}}$ ,  $S_{4400 \text{ \AA}}$ , and  $S_{5 \text{ GHz}}$  are the rest frame 2500 Å, 4400 Å and 5 GHz flux density, respectively.

We calculate the 5 GHz flux density by using the radio SEDs we have determined. In the cases of J2228+0110 and J2245+0024, we did not detect 323 MHz emission and there is only  $\sim 1.4$  GHz data available. We then predict the 5 GHz flux density based on the 1.4 GHz flux density and assuming a power law  $S_\nu \propto \nu^{-0.7}$  distribution. The radio loudness  $R_{2500 \text{ \AA}}$  of our sample spans a very large range from  $12_{-13}^{+13}$  to  $4982_{-254}^{+279}$  shown in Table 5.

## 5. Summary

We report on 323 MHz radio continuum observations by GMRT for thirteen radio-loud quasars at  $z > 5$ .

1. Ten are detected above  $4\sigma$ , two are not detected, while data for another one is contaminated by RFI. Based on our measurements together with archival data, nine quasars have power-law radio SEDs, and two may have spectral peaks.

2. Model fitting of the radio SEDs of the sources with power law behaviour shows that the power law indices have a positive range between 0.18 and 0.67 for some sources and a negative range between  $-0.90$  and  $-0.27$  for others. For the two sources with curved spectra, the radio peak centers at around  $\sim 1$  and  $\sim 10$  GHz in the rest frame, the optical-thin indices are  $-0.58$  and  $-0.90$ , and the optical-thick indices are 0.50 and 1.20.

3. A magnetic field and spectral age analysis of J1146+4037 may indicate that the turnover is not due to SSA. Source variability or FFA by the ambient plasma in the nuclear region may be the interpretations for the spectral turnover of this target.

4. With the 5 GHz flux density from the spectra modeling, we calculate the radio loudness  $R_{2500 \text{ \AA}}$  which spans a wide range from  $12_{-13}^{+13}$  to  $4982_{-254}^{+279}$ .

*Acknowledgements.* We thank the GMRT staff who helped to observe our project. The GMRT is run by the National Centre for Radio Astrophysics of the Tata Institute of Fundamental Research. R.W. acknowledges supports from the National Science Foundation of China (NSFC) grants No. 11473004 and 11533001. D.R. acknowledges support from the National Science Foundation under grant number AST-1614213 and AST-1910107 and from the Alexander von Humboldt Foundation through a Humboldt Research Fellowship for Experienced Researchers.

**Table 1.** Sample & archival data I

Source	$z$	$S_{120\text{ MHz}}$ (mJy)	$S_{147.5\text{ MHz}}$ (mJy)	$S_{232\text{ MHz}}$ (mJy)	$S_{325\text{ MHz}}$ (mJy)	$S_{1.4\text{ GHz}}$ (mJy)	$S_{1.6\text{ GHz}}$ (mJy)	$S_{1.7\text{ GHz}}$ (mJy)	$S_{5\text{ GHz}}$ (mJy)	$S_{8.4\text{ GHz}}$ (mJy)	$S_{32\text{ GHz}}$ (mJy)
J0131-0321	<sup>f</sup> 5.18 ± 0.01	-	<sup>x</sup> 25.70 ± 4.70	-	-	<sup>w</sup> 33.69 ± 0.12	-	<sup>v</sup> 64.40 ± 0.30	-	-	-
J0741+2520	<sup>k</sup> 5.194	-	-	-	-	<sup>w</sup> 2.97 ± 0.14	-	-	-	-	-
J0836+0054	<sup>e</sup> 5.774 ± 0.003	-	-	-	-	<sup>d</sup> 1.75 ± 0.04	<sup>b</sup> 1.10 ± 0.03	-	<sup>f</sup> 0.34 ± 0.04	-	-
J0913+5919	<sup>m</sup> 5.1224 ± 0.0001	-	-	<sup>h</sup> 30.00 ± 3.00	-	<sup>c</sup> 19.41 ± 0.12	-	-	<sup>d</sup> 8.10 ± 0.20	-	-
J1034+2033	<sup>z</sup> 5.0150 ± 0.0005	-	-	-	-	<sup>w</sup> 3.85 ± 0.14	-	-	-	-	-
J1146+4037	<sup>m</sup> 5.0059 ± 0.0007	-	-	-	-	<sup>w</sup> 12.53 ± 0.15	<sup>i</sup> 15.50 ± 0.80	-	<sup>l</sup> 8.60 ± 0.40	-	-
J1427+3312	<sup>g</sup> 6.12	-	-	-	<sup>u</sup> 4.80 ± 0.80	<sup>j</sup> 1.78 ± 0.11	<sup>i</sup> 0.92	-	<sup>l</sup> 0.46	<sup>j</sup> 0.25 ± 0.02	-
J1429+5447	<sup>p</sup> 6.1831 ± 0.0007	<sup>q</sup> 10.86 ± 1.55	-	-	-	<sup>w</sup> 2.95 ± 0.15	<sup>n</sup> 3.30 ± 0.06	-	<sup>o</sup> 0.99 ± 0.06	-	<sup>p</sup> 0.26 ± 0.02
J1614+4640	<sup>z</sup> 5.3131 ± 0.0013	-	-	-	-	<sup>w</sup> 2.16 ± 0.14	-	-	-	-	-
J2228+0110	<sup>q</sup> 5.95	-	-	-	-	<sup>o</sup> 0.31 ± 0.06	<sup>s</sup> 0.30 ± 0.12	-	-	-	-
J2239+0030	<sup>r</sup> 5.09	-	-	-	-	<sup>o</sup> 1.22 ± 0.08	-	-	-	-	-
J2245+0024	<sup>q</sup> 5.17	-	-	-	-	<sup>o</sup> 1.09 ± 0.06	-	-	-	-	-

**References.** <sup>a</sup>Sharp et al. (2001); <sup>b</sup>Frey et al. (2003); <sup>c</sup>Momjian et al. (2003); <sup>d</sup>Petric et al. (2003); <sup>e</sup>Stem et al. (2003); <sup>f</sup>Frey et al. (2005); <sup>g</sup>McGreer et al. (2006); <sup>h</sup>Carilli et al. (2007); <sup>i</sup>Frey et al. (2008); <sup>j</sup>Momjian et al. (2008); <sup>k</sup>McGreer et al. (2009); <sup>l</sup>McGreer et al. (2010); <sup>m</sup>Hewett & Wild (2010); <sup>n</sup>Frey et al. (2011); <sup>o</sup>Hodge et al. (2011); <sup>p</sup>Wang et al. (2011); <sup>q</sup>Zeimann et al. (2011); <sup>r</sup>McGreer et al. (2013); <sup>s</sup>Cao et al. (2014); <sup>t</sup>Yi et al. (2014); <sup>u</sup>Coppejans et al. (2015); <sup>v</sup>Gabányi et al. (2015); <sup>w</sup>Heifand et al. (2015); <sup>x</sup>Intema et al. (2015); <sup>y</sup>Shimmwell et al. (2017); <sup>z</sup>SDSS

**Notes.** Column 1: source name. Column 2: redshift. Columns 3–12: the flux density of each observing frequency.  
<sup>(1)</sup> We dragged image containing our source from TGSS (Intema et al. 2017), and adopted CASA 2D Gaussian fit tool to calculate the flux density as well as its error. This source does not appear in the TGSS online dataset, because they used a  $7\sigma$  cut.

**Table 2.** Sample & archival data II

Source	$z$	Wavelength (MHz)	$S_\nu$ (mJy)	Survey Name	Reference
J1026+2542	$5.2843 \pm 0.0006$				<i>k</i>
		76	-		
		84	$359.24 \pm 129.27$		
		92	$315.76 \pm 123.45$		
		99	$419.46 \pm 111.99$		
		107	$318.93 \pm 100.71$		
		115	$269.68 \pm 86.41$		
		122	$507.62 \pm 67.50$		
		130	$443.35 \pm 61.73$		
		143	$456.76 \pm 40.78$		
		151	$400.49 \pm 35.57$		
		158	$443.97 \pm 32.13$		
		166	$405.07 \pm 31.00$	GLEAM	<i>i</i>
		174	$405.18 \pm 39.58$		
		181	$431.84 \pm 39.13$		
		189	$422.07 \pm 39.65$		
		197	$431.17 \pm 42.62$		
		204	$476.86 \pm 70.88$		
		212	$527.16 \pm 71.72$		
		220	$287.54 \pm 72.41$		
		227	$450.06 \pm 84.39$		
		147.5	$450.50 \pm 5.90$	TGSS	<i>j, l</i>
		151	520.00	7C	<i>e</i>
		365	$406.00 \pm 24.00$	Texas	<i>c</i>
		408	328.00	B2	<i>a</i>
		1400	$239.44 \pm 0.14$	FIRST	<i>h</i>
		1700	180.40	-	<i>g</i>
		4830	$116.00 \pm 6.44$	MIT	<i>b</i>
		4850	$142.00 \pm 13.00$	GB6	<i>d</i>
		5000	79.20	CLASS	<i>f</i>
		8400	105.70	-	<i>m</i>
		15000	$55 \pm 4$	-	<i>l</i>
		31000	$33 \pm 4$	-	<i>l</i>
		43000	$55 \pm 4$	-	<i>m</i>
		91000	$14 \pm 3$	-	<i>l</i>

**References.** <sup>a</sup>Colla et al. (1972); <sup>b</sup>Langston et al. (1990); <sup>c</sup>Douglas et al. (1996); <sup>d</sup>Gregory et al. (1996); <sup>e</sup>Waldram et al. (1996); <sup>f</sup>Myers et al. (2003); <sup>g</sup>Frey et al. (2015); <sup>h</sup>Helfand et al. (2015); <sup>i</sup>Hurley-Walker et al. (2017); <sup>j</sup>Intema et al. (2017); <sup>k</sup>SDSS; <sup>l</sup>Sbarrato et al. (2013); <sup>m</sup>Frey et al. (2013)

**Notes.** Column 1: source name. Column 2: redshift. Columns 3–4: observed wavelength and its corresponding flux density. Columns 5–6: survey name and the reference.

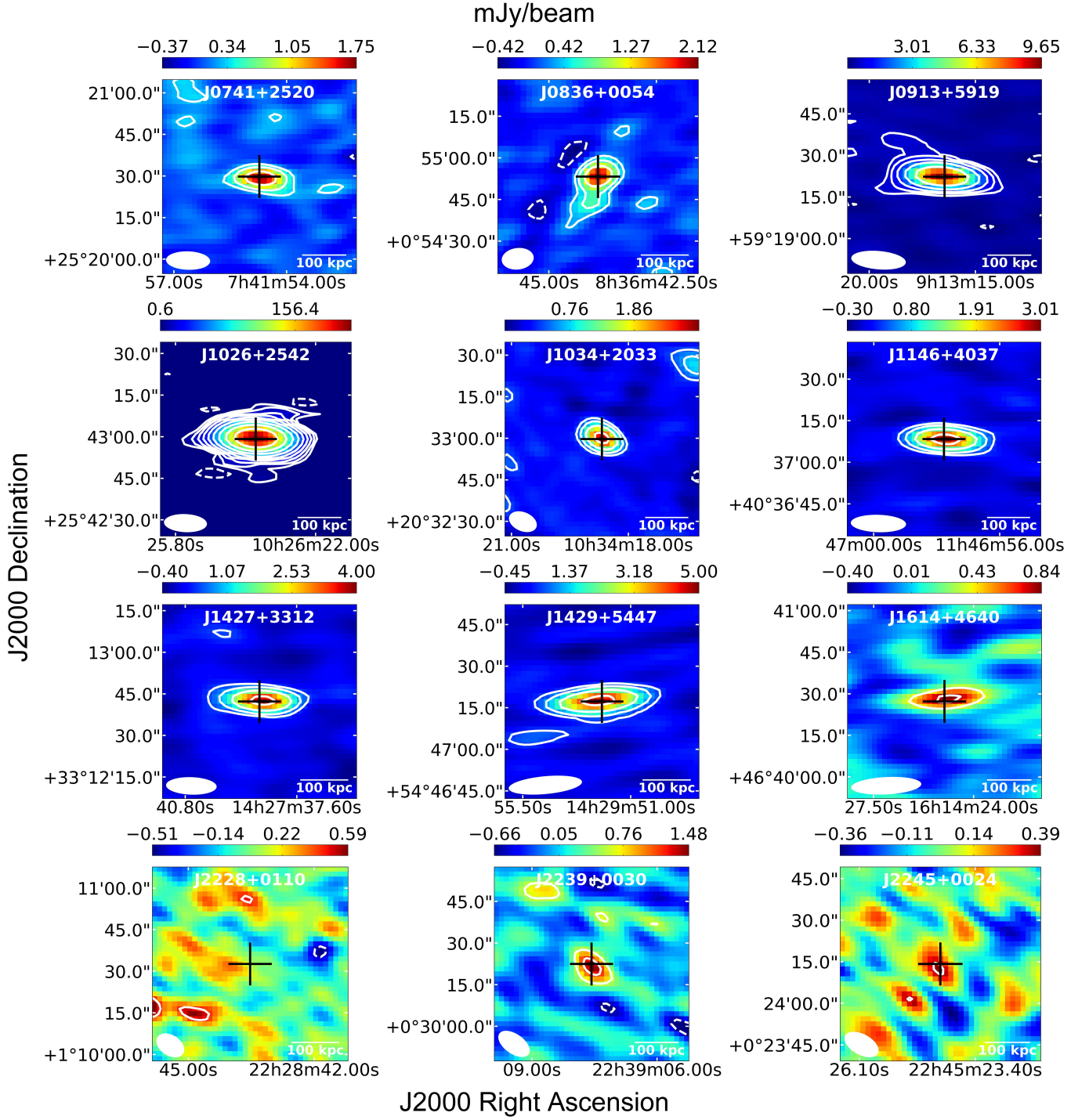
<sup>(l)</sup> We cut the source image from TGSS database (Intema et al. 2017), and measured the flux density and the corresponding error with CASA 2D Gaussian fit tool. The value we presented here is the same with that in TGSS online dataset.

**Table 3.** GMRT 323 MHz measurements

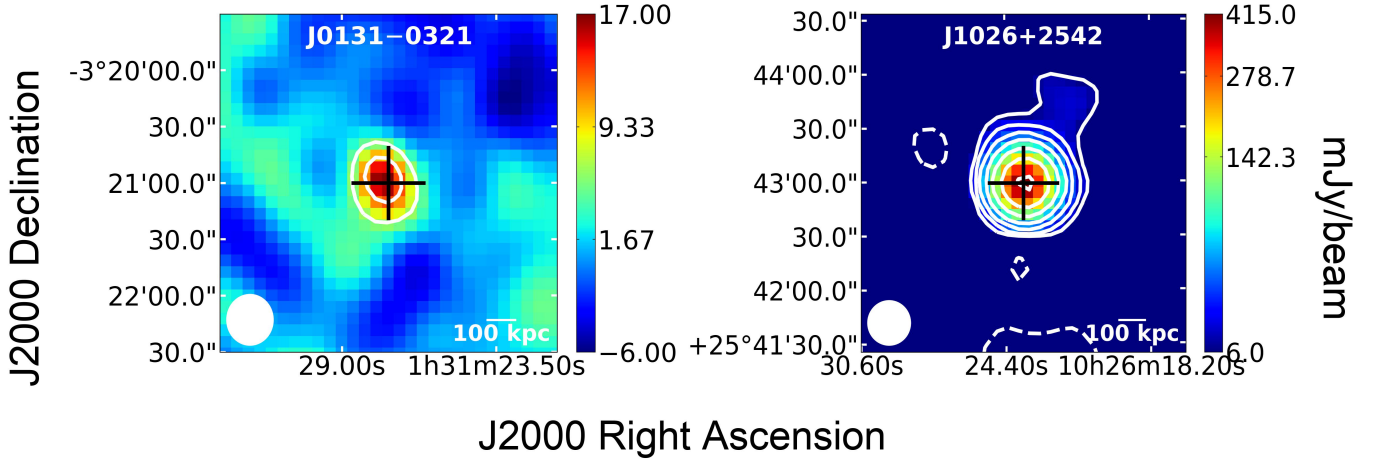
Source	Phase calibrator	rms (mJy beam <sup>-1</sup> )	Beam size (arc sec <sup>2</sup> )	$S_{323\text{ MHz, int}}$ (mJy)	$S_{323\text{ MHz, peak}}$ (mJy beam <sup>-1</sup> )
J0131–0321	0116–208	-	-	-	-
J0741+2520	0735+331	0.10	$15.74 \times 6.51$	$1.80 \pm 0.19$	$1.73 \pm 0.09$
J0836+0054	0744–064	0.10	$11.07 \times 7.61$	$2.47 \pm 0.36$	$1.94 \pm 0.17$
J0913+5919	0834+555	0.10	$19.57 \times 6.48$	$9.61 \pm 0.25$	$9.80 \pm 0.12$
J1026+2542	1021+219	0.20	$15.62 \times 6.39$	$318.41 \pm 0.65$	$317.72 \pm 0.33$
J1034+2033	3C241	0.10	$10.37 \times 6.68$	$2.97 \pm 0.19$	$3.03 \pm 0.11$
J1146+4037	3C241	0.10	$19.80 \times 6.14$	$2.98 \pm 0.15$	$3.05 \pm 0.07$
J1427+3312	3C286	0.14	$18.09 \times 6.13$	$4.51 \pm 0.22$	$3.96 \pm 0.10$
J1429+5447	3C287	0.17	$26.37 \times 6.28$	$5.02 \pm 0.35$	$4.91 \pm 0.16$
J1614+4640	3C286	0.13	$25.14 \times 6.12$	$0.81 \pm 0.19$	$0.94 \pm 0.09$
J2228+0110	3C454.2	0.15	$10.81 \times 7.21$	$< 0.45^l$	-
J2239+0030	2206–185	0.20	$12.78 \times 6.96$	$1.80 \pm 0.39$	$1.55 \pm 0.20$
J2245+0024	3C454.2	0.12	$12.99 \times 7.23$	$< 0.36^l$	-

**Notes.** Column 1: source name. Column 2: phase calibrator. Columns 3–4: the corresponding rms level and clean beam size for each target in Figure 1. Columns 5–6: the integrated and peak flux density measured by CASA 2D Gaussian tool.

<sup>(l)</sup>  $3\sigma$  upper limit.



**Fig. 1.** GMRT 323 MHz continuum images. The black crosses mark the published optical positions in Anderson et al. (2001), Fan et al. (2001), Sharp et al. (2001), McGreer et al. (2006, 2009), Willott et al. (2010), Zeimann et al. (2011), Yi et al. (2014) and SDSS. The shapes of the synthesized beams are plotted in the bottom left corner of each sub-figure. The beam sizes are presented in Table 3, where the rms of each map as well as the flux density of each target are also listed. The contour level in dashed line is  $-3 \times \text{rms}$ , and the contour levels in solid line are  $3 \times 2^n \times \text{rms}$ , where  $n$  is [0, 1, 2, 3, 4.....].

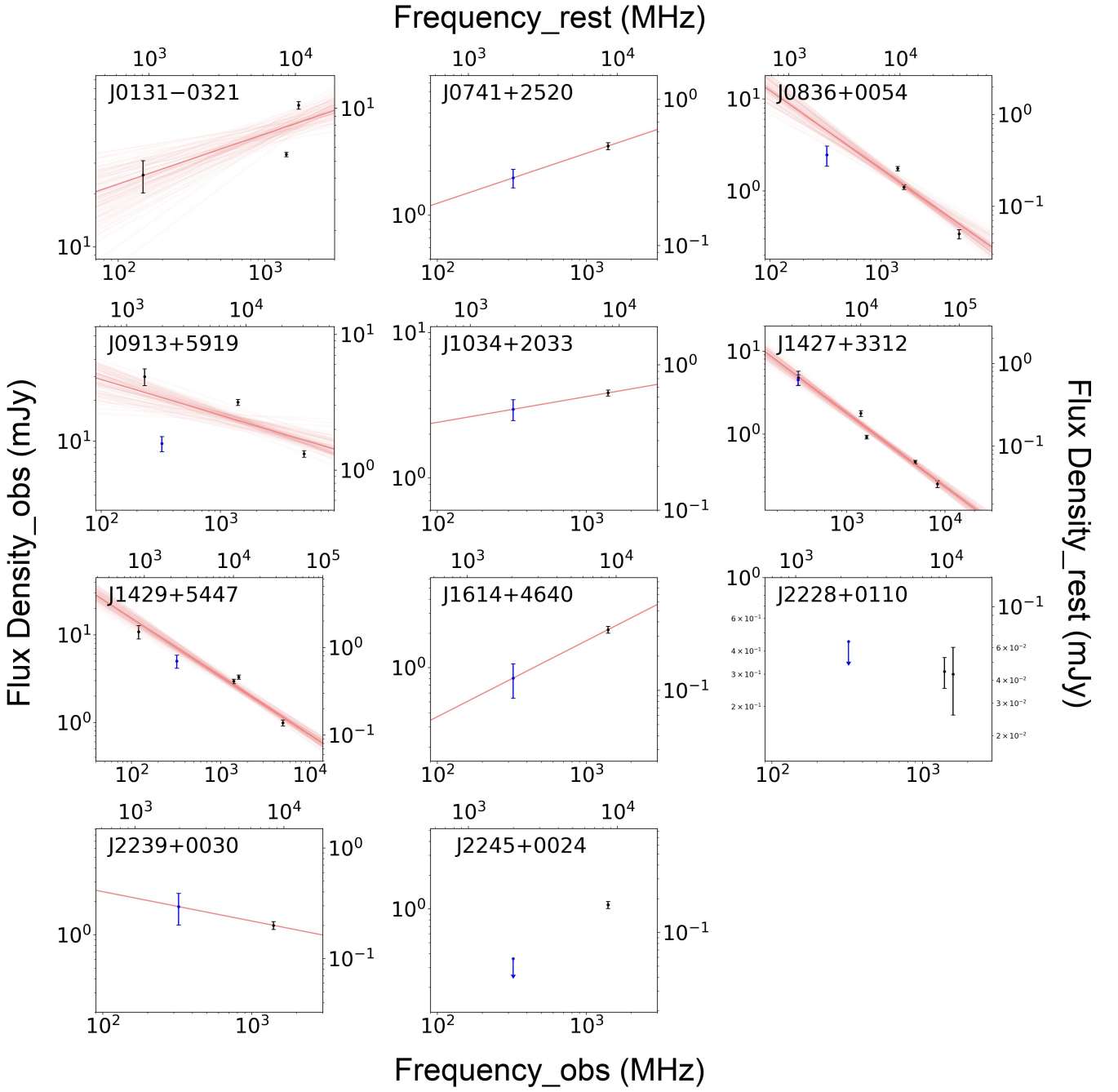


**Fig. 2.** The GMRT 147.5 GHz continuum map extracted from the TGSS database (Intema et al. 2017). The black crosses show the optical positions of the quasars from Yi et al. (2014) and the SDSS. The shapes of the synthesized beams are plotted in the bottom left of each panel: J0131–0321 with a clean beam size of  $27''25 \times 25''00$ , and J1026+2542 with a synthesis beam size of  $25''00 \times 25''00$ . Contour levels for each map are as follows: J0131–0321 -  $[3, 6] \times 2.0 \text{ mJy beam}^{-1}$ , J1026+2542 -  $[-3, 3, 6, 12, 24, 48, 96, 192] \times 2.0 \text{ mJy beam}^{-1}$ . Source information is given in Table 1 and 2.

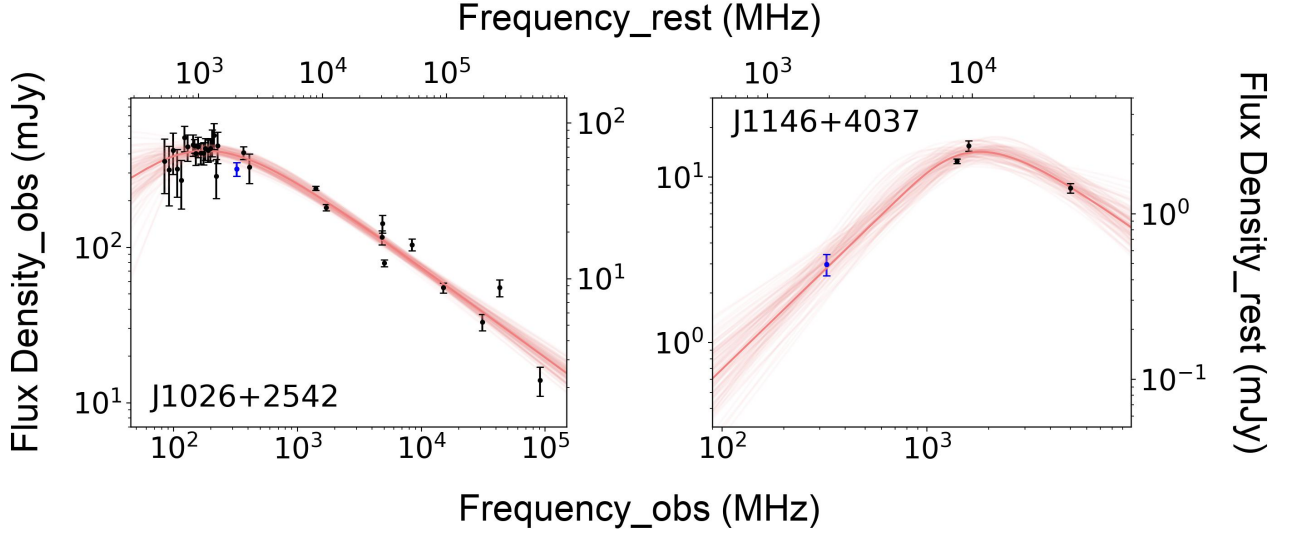
**Table 4.** Spectral model results

Source	Power law	Generic curved model			
	$\alpha_{\text{pl}}$	$\nu_{\text{p, rest}}$ (MHz)	$S_{\text{p, rest}}$ (mJy)	$\alpha_{\text{thin}}$	$\alpha_{\text{thick}}$
J0131–0321	$0.29^{+0.11}_{-0.09}$	-	-	-	-
J0741+2520	$0.34^{+0.14}_{-0.14}$	-	-	-	-
J0836+0054	$-0.86^{+0.08}_{-0.08}$	-	-	-	-
J0913+5919	$-0.27^{+0.07}_{-0.05}$	-	-	-	-
J1026+2542	-	$1471.0^{+576.6}_{-439.1}$	$64.8^{+4.1}_{-4.7}$	$-0.58^{+0.04}_{-0.03}$	$0.50^{+0.47}_{-0.23}$
J1034+2033	$0.18^{+0.12}_{-0.12}$	-	-	-	-
J1146+4037	-	$11227.6^{+2840.8}_{-3266.4}$	$2.4^{+0.2}_{-0.2}$	$-0.90^{+0.30}_{-0.27}$	$1.20^{+0.26}_{-0.20}$
J1427+3312	$-0.90^{+0.05}_{-0.04}$	-	-	-	-
J1429+5447	$-0.67^{+0.04}_{-0.03}$	-	-	-	-
J1614+4640	$0.67^{+0.23}_{-0.23}$	-	-	-	-
J2228+0110	-	-	-	-	-
J2239+0030	$-0.27^{+0.22}_{-0.22}$	-	-	-	-
J2245+0024	-	-	-	-	-

**Notes.** Column 1: source name. Column 2: the power law index of the standard non-thermal power-law model. Columns 3–6: derived parameters of the generic curved model.



**Fig. 3.** Spectral model fit with the standard non-thermal power-law model. The black points with error bars are archival data taken from the literature. The blue points with error bars or downward arrows are GMRT 323 MHz measurements from our work. We have added 10% calibration errors to the statistical errors of the GMRT 323 MHz data points (Chandra et al. 2004). The red lines represent the fitted models. For fits employing the MCMC method, we have drawn 100 models randomly selected from the parameter space as red shaded areas to visualize the model uncertainties. In the case of J2228+0110 and J2245+0024, we do not have enough data, so just give the measurements without any fitting. The fitted results are presented in Table 4.



**Fig. 4.** Spectral model fit with the generic curved model for J1026+2542 (left) and J1146+4037 (right). The description for symbols and lines are same as those in Figure 3. We present the fitted results in Table 4.

**Table 5.** Radio Loudness

Source	$m_z$ (mag)	$S_{2500 \text{ \AA}}$ (mJy)	$S_{4400 \text{ \AA}}$ (mJy)	$S_{5 \text{ GHz}}$ (mJy)	$R_{2500 \text{ \AA}}$	$R_{4400 \text{ \AA}}$
J0131-0321	<sup>d</sup> 18.08	0.046	0.061	$6.71^{+0.63}_{-0.62}$	$147^{+14}_{-13}$	$111^{+10}_{-10}$
J0741+2520	<sup>d</sup> 18.44	0.033	0.043	$0.40^{+0.42}_{-0.42}$	$12^{+13}_{-13}$	$9^{+10}_{-10}$
J0836+0054	<sup>1</sup> 18.83	0.022	0.029	$0.33^{+0.03}_{-0.03}$	$15^{+1}_{-1}$	$11^{+1}_{-1}$
J0913+5919	<sup>d</sup> 20.81	0.0037	0.0049	$2.66^{+0.93}_{-0.22}$	$716^{+58}_{-53}$	$540^{+44}_{-40}$
J1026+2542	<sup>d</sup> 19.85	0.0089	0.012	$44.21^{+2.47}_{-2.25}$	$4982^{+279}_{-254}$	$3756^{+210}_{-191}$
J1034+2033	<sup>d</sup> 19.70	0.010	0.014	$0.58^{+0.50}_{-0.50}$	$56^{+48}_{-48}$	$42^{+36}_{-36}$
J1146+4037	<sup>d</sup> 19.30	0.015	0.020	$1.41^{+0.34}_{-0.18}$	$97^{+18}_{-13}$	$74^{+14}_{-10}$
J1427+3312	<sup>1</sup> 18.87	0.021	0.027	$0.35^{+0.03}_{-0.03}$	$17^{+1}_{-1}$	$13^{+1}_{-1}$
J1429+5447	<sup>b,1</sup> 21.45	0.0019	0.0025	$0.60^{+0.04}_{-0.04}$	$318^{+19}_{-19}$	$240^{+14}_{-14}$
J1614+4640	<sup>d</sup> 19.71	0.010	0.013	$0.23^{+0.39}_{-0.39}$	$23^{+39}_{-39}$	$17^{+29}_{-29}$
J2228+0110	<sup>c,1</sup> 22.28	0.00089	0.0012	0.07	80	60
J2239+0030	<sup>d</sup> 21.01	0.0031	0.0041	$0.23^{+0.37}_{-0.37}$	$74^{+121}_{-121}$	$56^{+91}_{-91}$
J2245+0024	<sup>a</sup> 21.72	0.0016	0.0021	0.26	162	122

**References.** <sup>a</sup>Sharp et al. (2001); <sup>b</sup>Frey et al. (2011); <sup>c</sup>Zeimann et al. (2011); <sup>d</sup>SDSS.

**Notes.** Column 1: source name. Column 2:  $z$  band AB magnitude. Columns 3–4: rest frame 2500 Å and 4400 Å flux density which are calculated assuming a UV power law  $S_\nu \propto \nu^{-0.5}$  with  $z$  band photometry data. Column 5: rest frame 5 GHz flux density that is predicted from our spectral model fit. In the case of J2228+0110 and J2245+0024, the 5 GHz flux density is calculated with 1.4 GHz flux density assuming a power law  $S_\nu \propto \nu^{-0.7}$ . Columns 6–7: radio loudness defined in Equation 5 and 6.

(<sup>1</sup>)  $z$  band magnitude is contaminated by the strong Ly $\alpha$  line emission.

## References

- An, T. & Baan, W. A. 2012, *ApJ*, 760, 77
- An, T., Mohan, P., Zhang, Y., et al. 2020, *Nature Communications*, 11, 143
- Anderson, S. F., Fan, X., Richards, G. T., et al. 2001, *AJ*, 122, 503
- Bañados, E., Carilli, C., Walter, F., et al. 2018, *ApJ*, 861, L14
- Baum, S. A., O’Dea, C. P., Murphy, D. W., & de Bruyn, A. G. 1990, *A&A*, 232, 19
- Belladitta, S., Moretti, A., Caccianiga, A., et al. 2020, *A&A*, 635, L7
- Callingham, J. R., Gaensler, B. M., Ekers, R. D., et al. 2015, *ApJ*, 809, 168
- Cao, H.-M., Frey, S., Gurvits, L. I., et al. 2014, *A&A*, 563, A111
- Carilli, C. L., Wang, R., van Hoven, M. B., et al. 2007, *AJ*, 133, 2841
- Chandra, P., Ray, A., & Bhatnagar, S. 2004, *ApJ*, 612, 974
- Chiaberge, M. & Marconi, A. 2011, *MNRAS*, 416, 917
- Colla, G., Fanti, C., Fanti, R., et al. 1972, *A&AS*, 7, 1
- Condon, J. J., Cotton, W. D., Greisen, E. W., et al. 1998, *AJ*, 115, 1693
- Coppejans, R., Cseh, D., Williams, W. L., van Velzen, S., & Falcke, H. 2015, *MNRAS*, 450, 1477
- Dallacasa, D., Stanghellini, C., Centonza, M., & Fanti, R. 2000, *A&A*, 363, 887
- Douglas, J. N., Bash, F. N., Bozyan, F. A., Torrence, G. W., & Wolfe, C. 1996, *AJ*, 111, 1945
- Fan, X., Carilli, C. L., & Keating, B. 2006, *ARA&A*, 44, 415
- Fan, X., Narayanan, V. K., Lupton, R. H., et al. 2001, *AJ*, 122, 2833
- Foreman-Mackey, D., Hogg, D. W., Lang, D., & Goodman, J. 2013, *PASP*, 125, 306
- Frey, S., Fogasy, J. O., Paragi, Z., & Gurvits, L. I. 2013, *MNRAS*, 431, 1314
- Frey, S., Gurvits, L. I., Paragi, Z., & É. Gabányi, K. 2008, *A&A*, 484, L39
- Frey, S., Mosoni, L., Paragi, Z., & Gurvits, L. I. 2003, *MNRAS*, 343, L20
- Frey, S., Paragi, Z., Fogasy, J. O., & Gurvits, L. I. 2015, *MNRAS*, 446, 2921
- Frey, S., Paragi, Z., Gurvits, L. I., Cseh, D., & Gabányi, K. É. 2010, *A&A*, 524, A83
- Frey, S., Paragi, Z., Gurvits, L. I., Gabányi, K. É., & Cseh, D. 2011, *A&A*, 531, L5
- Frey, S., Paragi, Z., Mosoni, L., & Gurvits, L. I. 2005, *A&A*, 436, L13
- Gabányi, K. É., Cseh, D., Frey, S., et al. 2015, *MNRAS*, 450, L57
- Ghisellini, G., Sbarrato, T., Tagliaferri, G., et al. 2014, *MNRAS*, 440, L111
- Ghisellini, G., Tagliaferri, G., Sbarrato, T., & Gehrels, N. 2015, *MNRAS*, 450, L34
- Gregory, P. C., Scott, W. K., Douglas, K., & Condon, J. J. 1996, *ApJS*, 103, 427
- Greisen, E. W. 2003, in *Astrophysics and Space Science Library*, Vol. 285, *Information Handling in Astronomy - Historical Vistas*, ed. A. Heck, 109
- Helfand, D. J., White, R. L., & Becker, R. H. 2015, *ApJ*, 801, 26
- Helmboldt, J. F., Taylor, G. B., Tremblay, S., et al. 2007, *ApJ*, 658, 203
- Hewett, P. C. & Wild, V. 2010, *MNRAS*, 405, 2302
- Hodge, J. A., Becker, R. H., White, R. L., Richards, G. T., & Zeimann, G. R. 2011, *AJ*, 142, 3
- Hurley-Walker, N., Callingham, J. R., Hancock, P. J., et al. 2017, *MNRAS*, 464, 1146
- Intema, H. T. 2014a, in *Astronomical Society of India Conference Series*, Vol. 13, *Astronomical Society of India Conference Series*
- Intema, H. T. 2014b, *SPAM: Source Peeling and Atmospheric Modeling*, *Astrophysics Source Code Library*
- Intema, H. T., Jagannathan, P., Mooley, K. P., & Frail, D. A. 2017, *A&A*, 598, A78
- Jaffe, W. & Perola, G. C. 1974, *A&A*, 31, 223
- Jiang, L., McGreer, I. D., Fan, X., et al. 2015, *AJ*, 149, 188
- Kardashev, N. S., Kuz’min, A. D., & Syrovatskii, S. I. 1962, *Soviet Ast.*, 6, 167
- Kellermann, K. I. & Pauliny-Toth, I. I. K. 1981, *ARA&A*, 19, 373
- Kellermann, K. I., Sramek, R., Schmidt, M., Shaffer, D. B., & Green, R. 1989, *AJ*, 98, 1195
- Langston, G. I., Hefflin, M. B., Conner, S. R., et al. 1990, *ApJS*, 72, 621
- Marecki, A., Barthel, P. D., Polatidis, A., & Owsianik, I. 2003, *PASA*, 20, 16
- Mazzucchelli, C., Bañados, E., Venemans, B. P., et al. 2017, *ApJ*, 849, 91
- McGreer, I. D., Becker, R. H., Helfand, D. J., & White, R. L. 2006, *ApJ*, 652, 157
- McGreer, I. D., Helfand, D. J., & White, R. L. 2009, *AJ*, 138, 1925
- McGreer, I. D., Jiang, L., Fan, X., et al. 2013, *ApJ*, 768, 105
- Momjian, E., Carilli, C. L., Bañados, E., Walter, F., & Venemans, B. P. 2018, *ApJ*, 861, 86
- Momjian, E., Carilli, C. L., & McGreer, I. D. 2008, *AJ*, 136, 344
- Momjian, E., Petric, A. O., & Carilli, C. L. 2003, in *Bulletin of the American Astronomical Society*, Vol. 35, *American Astronomical Society Meeting Abstracts*, 1327
- Murgia, M. 2003, *PASA*, 20, 19
- Myers, S. T., Jackson, N. J., Browne, I. W. A., et al. 2003, *MNRAS*, 341, 1
- O’Dea, C. P. & Baum, S. A. 1997, *AJ*, 113, 148
- Orienti, M. & Dallacasa, D. 2008, *A&A*, 487, 885
- Orienti, M. & Dallacasa, D. 2012, *MNRAS*, 424, 532
- Pacholczyk, A. G. 1970, *Radio astrophysics. Nonthermal processes in galactic and extragalactic sources*
- Peck, A. B., Taylor, G. B., & Conway, J. E. 1999, *ApJ*, 521, 103
- Petric, A. O., Carilli, C. L., Bertoldi, F., et al. 2003, *AJ*, 126, 15
- Polatidis, A. G. & Conway, J. E. 2003, *PASA*, 20, 69
- Readhead, A. C. S. 1994, *ApJ*, 426, 51
- Romani, R. W., Sowards-Emmerd, D., Greenhill, L., & Michelson, P. 2004, *ApJ*, 610, L9
- Sbarrato, T., Ghisellini, G., Nardini, M., et al. 2012, *MNRAS*, 426, L91
- Sbarrato, T., Tagliaferri, G., Ghisellini, G., et al. 2013, *ApJ*, 777, 147
- Sharp, R. G., McMahon, R. G., Irwin, M. J., & Hodgkin, S. T. 2001, *MNRAS*, 326, L45
- Shimwell, T. W., Röttgering, H. J. A., Best, P. N., et al. 2017, *A&A*, 598, A104
- Snellen, I. A. G., Schilizzi, R. T., de Bruyn, A. G., et al. 1998, *A&AS*, 131, 435
- Spergel, D. N., Bean, R., Doré, O., et al. 2007, *ApJS*, 170, 377
- Stanghellini, C., Baum, S. A., O’Dea, C. P., & Morris, G. B. 1990, *A&A*, 233, 379
- Stern, D., Hall, P. B., Barrientos, L. F., et al. 2003, *ApJ*, 596, L39
- Stocke, J. T., Morris, S. L., Weymann, R. J., & Foltz, C. B. 1992, *ApJ*, 396, 487
- Tingay, S. J. & de Kool, M. 2003, *AJ*, 126, 723
- Tingay, S. J., Macquart, J. P., Collier, J. D., et al. 2015, *AJ*, 149, 74
- van Bruegel, W., Miley, G., & Heckman, T. 1984, *AJ*, 89, 5
- Waldram, E. M., Yates, J. A., Riley, J. M., & Warner, P. J. 1996, *MNRAS*, 282, 779
- Wang, R., Wagg, J., Carilli, C. L., et al. 2011, *ApJ*, 739, L34
- Wilkinson, P. N., Polatidis, A. G., Readhead, A. C. S., Xu, W., & Pearson, T. J. 1994, *ApJ*, 432, L87
- Willott, C. J., Delorme, P., Reylé, C., et al. 2010, *AJ*, 139, 906
- Yi, W.-M., Wang, F., Wu, X.-B., et al. 2014, *ApJ*, 795, L29
- Zeimann, G. R., White, R. L., Becker, R. H., et al. 2011, *ApJ*, 736, 57