



Universiteit  
Leiden  
The Netherlands

## **Surgical outcome of colorectal cancer screening**

Vermeer, N.C.A.

### **Citation**

Vermeer, N. C. A. (2021, January 14). *Surgical outcome of colorectal cancer screening*. Retrieved from <https://hdl.handle.net/1887/139046>

Version: Publisher's Version

License: [Licence agreement concerning inclusion of doctoral thesis in the Institutional Repository of the University of Leiden](#)

Downloaded from: <https://hdl.handle.net/1887/139046>

**Note:** To cite this publication please use the final published version (if applicable).

Cover Page



Universiteit Leiden



The handle <http://hdl.handle.net/1887/139046> holds various files of this Leiden University dissertation.

**Author:** Vermeer, N.C.A.

**Title:** Surgical outcome of colorectal cancer screening

**Issue Date:** 2021-01-14

## CHAPTER 6

# National cohort study on postoperative risks after surgery for submucosal invasive colorectal cancer

N.C.A. Vermeer, Y. Backes, H.S. Snijders, E. Bastiaannet,  
G.J. Liefers, L.M.G. Moons, C.J.H. van de Velde,  
K.C.M.J. Peeters

*on behalf of the Dutch T1 Colorectal Cancer Working Group*

## ABSTRACT

**Background:** The decision to perform surgery for patients with T1 colorectal cancer hinges on the estimated risk of lymph node metastasis, residual tumour and risks of surgery. The aim of this observational study was to compare surgical outcomes for T1 colorectal cancer with those for more advanced colorectal cancer.

**Methods:** This was a population-based cohort study of patients treated surgically for pT1–3 colorectal cancer between 2009 and 2016, using data from the Dutch ColoRectal Audit. Postoperative complications (overall, surgical, severe complications and mortality) were compared using multivariable logistic regression. A risk stratification table was developed based on factors independently associated with severe complications (reintervention and/or mortality) after elective surgery.

**Results:** Of 39 813 patients, 5170 had pT1 colorectal cancer. No statistically significant differences were observed between patients with pT1 and pT2–3 disease in the rate of severe complications (8.3 versus 9.5 per cent respectively; odds ratio (OR) 0.89, 95 per cent c.i. 0.80 to 1.01,  $P = 0.061$ ), surgical complications (12.6 versus 13.5 per cent; OR 0.93, 0.84 to 1.02,  $P = 0.119$ ) or mortality (1.7 versus 2.5 per cent; OR 0.94, 0.74 to 1.19,  $P = 0.604$ ). Male sex, higher ASA grade, previous abdominal surgery, open approach and type of procedure were associated with higher severe complication rate in patients with pT1 colorectal cancer.

**Conclusion:** Elective bowel resection was associated with similar morbidity and mortality rates in patients with pT1 and those with pT2–3 colorectal carcinoma.

## INTRODUCTION

The introduction of population-based colorectal carcinoma screening programmes aims to reduce mortality from colorectal cancer. Screening-detected colorectal cancers have a more favourable stage distribution than those that are symptom-detected, but it remains unclear whether early diagnosis following screening results in better surgical outcomes.<sup>1</sup> In January 2014, a nationwide colorectal cancer screening programme was launched in the Netherlands. Individuals aged 55–75 years are offered a biennial faecal immunochemical test (FIT), and diagnostic colonoscopy when the FIT is positive.<sup>2</sup>

A proportion of colorectal cancers limited to the submucosa (pT1) can be treated with minimally invasive endoscopic resection techniques, in contrast to more advanced colorectal cancers.<sup>3</sup> The indication to perform additional surgery depends on the risks of lymph node metastasis and incomplete resection, which is estimated using histological risk factors such as lymphovascular invasion, invasion depth, differentiation grade, tumour budding and resection margins.<sup>4-5,6</sup> Assessment of whether the oncological benefits of excision of potential positive lymph nodes and possible residual cancer tissue outweigh the risks of additional surgery is challenging<sup>7,8</sup>. Evidence regarding the magnitude of these risks is sparse. Studies evaluating surgical morbidity and mortality of colorectal surgery consist mainly of patients with more advanced tumours.<sup>9-11</sup> These risks cannot simply be extrapolated to patients with pT1 colorectal cancer as the clinical characteristics of patients with advanced colorectal carcinoma might be different<sup>12</sup>, few treatment alternatives are available, and the risk of cancer-related death is higher.

The aim of this study was to compare short-term postoperative outcomes after elective bowel resection in patients with pT1 and those with pT2–3 colorectal cancer, and to identify the key clinical features associated with severe complications after surgery for pT1 colorectal cancer from which a risk stratification table could be developed to help clinicians guide treatment decisions in patients with pT1 colorectal cancer.

## METHODS

This was a population-based cohort study of patients who underwent colorectal surgery for pT1–3 stage colorectal cancer between January 2009 and December 2016 in the Netherlands. The total population in the Netherlands was estimated as 16.6 million people in 2010, according to Statistics Netherlands. Patients were identified from the Dutch ColoRectal Audit (DCRA), formerly known as the Dutch Surgical Colorectal Audit. The DCRA is a web-based national audit, in which information on all patients undergoing surgery for primary is recorded prospectively.<sup>13</sup> The database has complete national coverage as the Dutch Health Inspectorate obliges inclusion of all surgically treated patients with colorectal cancer.

Patients who had an elective oncological resection were included in the study. Those who underwent neoadjuvant treatment, urgent or emergency surgery, or only a local procedure were excluded, as were patients with metastatic disease or synchronous colorectal cancer. Patients treated with a local surgical procedure before bowel resection were not excluded. As all data in the DCRA are coded, no ethical approval or informed consent was required for this study under Dutch law.<sup>14</sup>

## Outcomes

Main outcome measures were overall, surgical and severe complications, and mortality. Definitions are shown in *Table 1*. The reason for selecting the combined outcome of severe complications (reintervention and/or mortality) in this study was because mortality alone was considered an underestimation of the total burden to the patient.<sup>15</sup> If no complication was registered, the authors assumed no complication had occurred. The number of patients with surgically treated colorectal cancer were analysed over time, according to pT category, to determine the effect of the introduction of mass screening.

## Risk factors and study parameters

Patient- and tumour-related risk factors associated with morbidity and mortality following elective colorectal surgery in previous literature were used in analyses.<sup>16-19</sup> Factors analysed were: age, sex, cardiac, pulmonary and neurological co-morbidity, ASA grade (I–II versus III–V), history of abdominal surgery, BMI, preoperative complications (perforation with peritonitis, abscess, obstruction or ileus, bleeding or anaemia, or other), tumour location (colon or rectum), detection method (non-screen-detected versus screen-detected), year of surgery, type of procedure (open, laparoscopic or conversion from laparoscopic to open procedure), type of surgery (right colectomy, left colectomy, sigmoid resection, low anterior resection (LAR), abdominoperineal resection (APR), (sub)total colectomy or other), lymph node yield (less than 12 or 12 or more nodes) and pN category (N0, N1 or N2). Ileocaecal and transverse resections were also categorized as right colectomy. Panproctocolectomy and subtotal colectomy were categorized together as (sub)

**Table 1. Definitions**

Definition	Description
Overall complications	Complications within 30 days after surgery including cardiac, pulmonary, thromboembolic, neurological, infectious, other general and surgical complications
Surgical complications	Complications within 30 days after primary surgery that were directly related to the surgical intervention, including anastomotic leakage, abscess, bleeding and postoperative ileus
Severe complications	Complications requiring reintervention and/or leading to death within 30 days after primary surgery (mortality)
Mortality	Death within 30 days after surgery
Reintervention	Reoperation (open or laparoscopic surgery) or radiological intervention after primary bowel surgery. Minor interventions such as placement of a central venous catheter, incision of a superficial wound infection or nasogastric intubation were not considered reinterventions

total colectomy. When information on co-morbidity was missing, it was interpreted as absent. For all patients, tumour stage was defined according to the fifth edition of the TNM classification of malignant tumours for colorectal cancer.<sup>20</sup>

### Statistical analysis

Baseline characteristics were compared between patients with pT1, pT2 and pT3 colorectal cancer using the  $\chi^2$  test for categorical variables and the Kruskal-Wallis test for continuous variables. Missing data were assumed to be missing at random. For all logistic regression analyses, multiple imputation using a Markov chain Monte Carlo method was performed to adjust for missing values (10-imputation data sets, 25 iterations).<sup>21,22</sup>

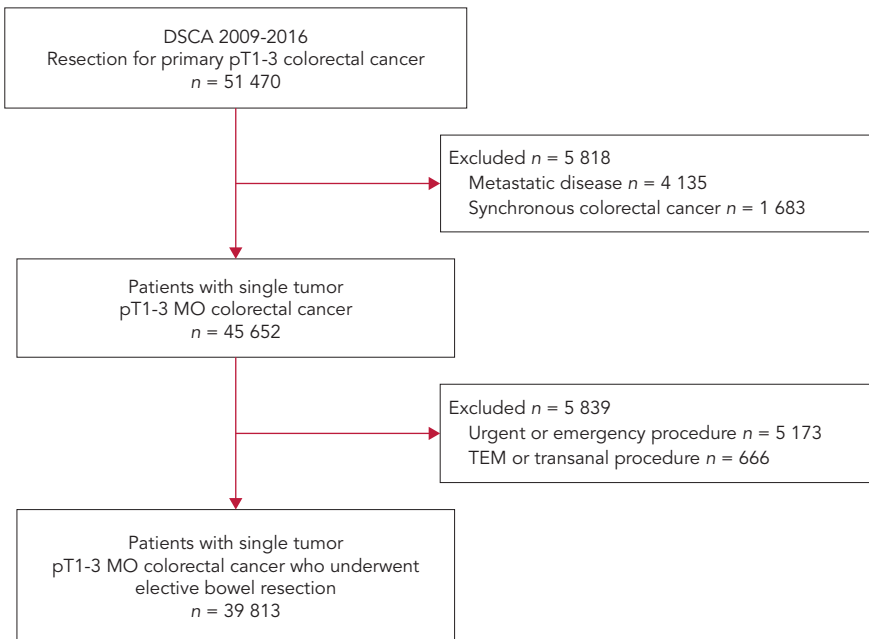
The association between pT category (pT1 versus pT2–3 colorectal cancer) and short-term postoperative outcomes was evaluated with univariable logistic regression analysis, expressed as odds ratios (ORs) with 95 per cent confidence intervals. Multivariable logistic regression analysis was performed to adjust for possible confounding factors. Age, BMI and year of surgery were analysed continuously in regression analyses; the remaining variables were analysed as categorical.

To identify risk factors associated with severe complications after elective surgery for pT1 colorectal cancer, logistic regression analyses were performed. Independent variables with  $P < 0.050$  in univariable analysis were entered into the multivariable logistic regression model. A risk stratification table was developed for severe complications after surgery for pT1 colorectal cancer, stratified for sex (men versus women), type of operation (right colectomy versus left colectomy versus sigmoid resection versus LAR versus APR) and ASA grade (I–II versus III–V). Bootstrapping was performed to calculate 95 per cent confidence intervals.

GraphPad Prism® version 7.02 (GraphPad Software, La Jolla, California, USA) and Microsoft Visio® version 2010 (Microsoft, Redmond, Washington, USA) were used to draw figures. All analyses were performed in IBM SPSS® version 23.0 software (IBM, Armonk, New York, USA). Statistical significance was defined as  $P < 0.050$ .

## RESULTS

Of 51 470 surgically treated patients with colorectal cancer identified, 39 813 fulfilled the inclusion criteria (Fig. 1). Some 5170 (13.0 per cent) were diagnosed with pT1, 9701 (24.4 per cent) with pT2 and 24 942 (62.6 per cent) with pT3 colorectal carcinoma. The mean age of the cohort was 71 years and 54.4 per cent were men. Baseline characteristics are shown in Table 2. Patients with T1 CRC were significantly younger, more often men, and had a lower ASA grade (all  $P < 0.001$ ). pT1 cancers were more often screen-detected, more frequently diagnosed in 2015–2016 and more often located in the rectum (all  $P < 0.001$ ). Patients with pT2–3 tumours more often had preoperative complications and underwent open surgery more frequently (both  $P < 0.001$ ). Patients treated with a local surgical procedure before bowel resection accounted for 1.3 per cent of the complete cohort. Ileocaecal and



**Figure 1. Study flow chart of included patients.**

*DSCA, Dutch Surgical Colorectal Audit; TEM, transanal endoscopic microsurgery*

transverse resections accounted for 0.6 and 2.1 per cent of operations respectively; these were recategorized as right colectomies. Panproctocolectomy and subtotal colectomy accounted for 0.3 and 1.3 per cent respectively, and were recategorized as (sub)total colectomies.

### Time trends

An increase in the absolute number of patients treated surgically for colorectal cancer was observed over time, from 3139 in 2009 to 6864 in 2016. The proportion of pT1 cancer increased from 8.1 per cent in 2009 to 17.7 per cent in 2016 ( $P < 0.001$ ) (Fig. 2). The steepest increase was between 2014 and 2015 (+4.4 per cent), with 2014 being the year in which the colorectal cancer screening programme was introduced in the Netherlands. The proportion of screen-detected pT1 tumours among all pT1 colorectal cancers increased from 34.6 per cent in 2014 to 61.3 per cent in 2016 ( $P < 0.001$ ) (Fig. 3).

### Morbidity and mortality in pT1 versus pT2–3 colorectal cancer

Complications were observed in a total of 10 828 patients (27.2 per cent). Surgical complications occurred in 13.4 per cent (5334 patients) and severe complications in 9.3 per cent (3711). The 30-day mortality rate was 2.4 per cent. The overall complication rate was significantly lower following surgery for pT1 cancer compared with surgery for pT2–3 disease (23.6 versus 27.7 per cent respectively; OR 0.80,



**Table 2. Demographic and clinical characteristics of surgically treated patients with colorectal carcinoma, according to pT category (2009–2016)**

	pT1 (n = 5170)	pT2–3 (n = 34 643)	P*
Age (years)*	69(9)	71(11)	< 0.001#
Sex			< 0.001
M	2971 (57.5)	18 698 (54.0)	
F	2196 (42.5)	15 936 (46.0)	
Unknown	3 (0.1)	9 (0.0)	
Type of co-morbidity			
Cardiac	1463 (28.3)	9924 (28.6)	0.609
Pulmonary	751 (14.5)	4851 (14.0)	0.314
Neurological	702 (13.6)	5066 (14.6)	0.047
ASA fitness grade			
I–II	4154 (80.3)	26 314 (76.0)	< 0.001
III–V	1005 (19.4)	8092 (23.4)	
Unknown	11 (0.2)	237 (0.7)	
Previous abdominal surgery			0.137
No	3300 (63.8)	22 422 (64.7)	
Yes	1857 (35.9)	12 045 (34.8)	
Unknown	13 (0.3)	176 (0.5)	
BMI (kg/m2)*	27(4)	27(5)	< 0.001#
Preoperative complication			< 0.001
No	4555 (88.1)	25 973 (75.0)	
Yes	584 (11.3)	8402 (24.3)	
Unknown	31 (0.6)	268 (0.8)	
Location of primary tumour			< 0.001
Colon	4397 (85.0)	31 038 (89.6)	
Rectum	773 (15.0)	3605 (10.4)	
Detection method			< 0.001
Non-screen-detected	3412 (66.0)	29 791 (86.0)	
Screen-detected	1695 (32.8)	4531 (13.1)	
Unknown	63 (1.2)	321 (0.9)	
Year of surgery			< 0.001
2009–2014	2733 (52.9)	23 379 (67.5)	
2015–2016	2437 (47.1)	11 264 (32.5)	
Type of procedure			< 0.001
Laparoscopic	3784 (73.2)	20 763 (59.9)	
Laparotomy	1038 (20.1)	11 208 (32.4)	
Conversion†	327 (6.3)	2562 (7.4)	
Unknown	21 (0.4)	110 (0.3)	
Type of surgery			< 0.001
Right colectomy‡	1552 (30.0)	15 786 (45.6)	
Left colectomy	395 (7.6)	3221 (9.3)	
Sigmoid resection	2306 (44.6)	11 413 (32.9)	
LAR	644 (12.5)	2867 (8.3)	
APR	98 (1.9)	664 (1.9)	
(Sub)total colectomy§	126 (2.4)	539 (1.6)	
Other	47 (0.9)	149 (0.4)	
Unknown	2 (0.0)	4 (0.0)	

	pT1 (n = 5170)	pT2–3 (n = 34 643)	P <sup>‡</sup>
Lymph node yield			< 0.001
≤ 12	2229 (43.1)	7207 (20.8)	
≥ 12	2911 (56.3)	27 324 (78.9)	
Unknown	30 (0.6)	112 (0.3)	
pN category			< 0.001
pN0	4415 (85.4)	22 652 (65.4)	
pN1	496 (9.6)	8097 (23.4)	
pN2	173 (3.3)	3758 (10.8)	
Unknown	86 (1.7)	136 (0.4)	

Values in parentheses are percentages unless indicated otherwise;

\* values are mean(s.d.). LAR, low anterior resection; APR, abdominoperineal resection.

† From laparoscopic to open procedure;

‡ including ileocaecal resection and transverse resection;

§ including panproctocolectomy and subtotal colectomy.

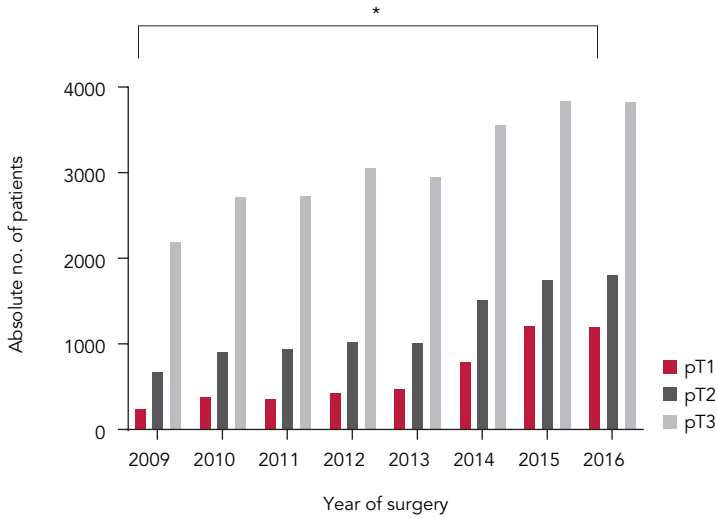
¶  $\chi^2$  test, except #Kruskal–Wallis test.

95 per cent c.i. 0.75 to 0.86,  $P < 0.001$ ). This finding remained statistically significant after adjusting for confounders (OR 0.90, 0.84 to 0.97,  $P = 0.008$ ). Rates of surgical complications (12.6 versus 13.5 per cent; adjusted OR 0.93, 0.84 to 1.02,  $P = 0.119$ ), severe complications (8.3 versus 9.5 per cent; adjusted OR 0.89, 0.80 to 1.01,  $P = 0.061$ ) and mortality (1.7 versus 2.5 per cent; adjusted OR 0.94, 0.74 to 1.19,  $P = 0.604$ ) did not significantly differ between the two groups (Table 3). Details regarding types of complication stratified according to pT group are summarized in Table S1 (supporting information).

### Risk stratification in patients with pT1 colorectal cancer

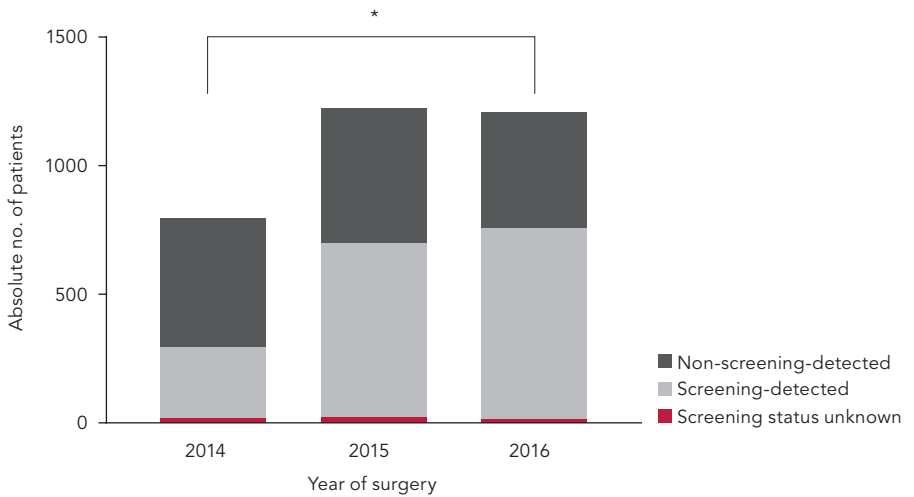
Factors associated with severe complications after surgery for pT1 colorectal cancer are shown in Table S2 (supporting information). Male sex (adjusted OR 2.21, 95 per cent c.i. 1.76 to 2.79), cardiac co-morbidity (adjusted OR 1.26, 1.00 to 1.59), ASA grade III–IV (versus I–II; adjusted OR 1.41, 1.10 to 1.81), previous abdominal surgery (adjusted OR 1.25, 1.01 to 1.56), open approach (adjusted OR 1.60, 1.26 to 2.04), conversion from a laparoscopic to an open procedure (adjusted OR 1.89, 1.33 to 2.67) and subtotal colectomy (versus right colectomy; adjusted OR 2.38, 1.40 to 4.05) were independently associated with an increased risk of severe complications. Sigmoid resection was associated with a lower risk of severe complications (versus right colectomy; adjusted OR 0.67, 0.52 to 0.87). Using these risk factors, severe complication risk was stratified (Fig. 4). Women with ASA grade I–II and pT1 disease who underwent right colectomy or sigmoid resection had the lowest risk of severe complications (5 per cent or less), whereas men with ASA grade III–IV and pT1 disease treated with right or left colectomy had the highest risk of severe complications (more than 19 per cent).

Severe complication risks of surgery for pT2–3 colorectal cancer stratified for the same risk factors showed similar results. Women with ASA grade I–II who underwent sigmoid resection had a 5 per cent risk of severe complications and men with ASA grade III–IV treated with left colectomy had an 18.8 per cent risk (Fig. 4).



**Figure 2.** Distribution of surgically treated patients with colorectal cancer over time according to pT category.

\* $P < 0.001$  (pT1 2009 versus pT1 2016,  $\chi^2$  test)



**Figure 3.** Contribution of screen-detected tumours in patients with pT1 colorectal cancer treated surgically after implementation of mass screening programme in 2014.

\* $P < 0.001$  ( $\chi^2$  test)

## a Complications in women

Type of operation	ASA grade I-II		ASA grade III-IV	
	n	%	n	%
pT1 category				
Right colectomy *	599	5.0 (3.1, 6.8)	150	10.7 (5.8, 16.3)
Left colectomy	134	6.0 (2.2, 10.2)	26	n.a.
Sigmoid resection	762	2.9 (1.8, 4.2)	138	5.1 (1.6, 9.3)
LAR	238	8.0 (4.6, 11.7)	28	n.a.
APR	37	5 (0, 14)	7	n.a.
pT2-3 category				
Right colectomy *	6371	6.1 (5.5, 6.7)	2075	10.0 (8.7, 11.4)
Left colectomy	1062	8.8 (7.2, 10.4)	308	15.9 (11.9, 20.1)
Sigmoid resection	3699	5.0 (4.3, 5.7)	725	11.7 (9.4, 14.1)
LAR	891	6.3 (4.7, 7.8)	201	9.5 (5.6, 13.5)
APR	170	5.3 (2.0, 8.7)	40	13 (3, 24)

## b Complications in men

Type of operation	ASA grade I-II		ASA grade III-IV	
	n	%	n	%
pT1 category				
Right colectomy *	579	9.5 (7.3, 12.0)	220	19.1 (14.0, 24.4)
Left colectomy	179	10.1 (5.8, 15.0)	55	24 (12, 35)
Sigmoid resection	1119	6.3 (4.9, 7.9)	279	11.1 (7.6, 15.1)
LAR	312	15.1 (11.0, 19.1)	65	15 (7, 25)
APR	47	15 (6, 27)	7	n.a.
pT2-3 category				
Right colectomy *	5124	8.7 (7.9, 9.4)	2093	16.7 (15.0, 18.3)
Left colectomy	1345	11.5 (9.9, 13.3)	484	18.8 (15.3, 22.3)
Sigmoid resection	5387	8.3 (7.6, 9.0)	1516	13.9 (12.1, 15.6)
LAR	1371	15.0 (13.1, 16.8)	396	22.7 (18.8, 27.1)
APR	340	9.1 (6.3, 12.5)	112	22.3 (14.9, 30.0)

**Figure 4.** Risk of severe complications (reintervention and/or mortality within 30 days) after colorectal surgery in patients with pT1 and pT2–3 colorectal cancer. Risk of complications in a women and b men with ASA grade I–II and III–IV fitness (pT1: 427 events in 5170 patients; pT2–3: 3284 events in 34 643 patients). Increasing risk is indicated by change in colour from dark green to light green to yellow to orange to red. Values in parentheses are 95 per cent confidence intervals.

\* Includes ileocaecal resection and transverse resection. n.a., Not applicable (sample size too small); LAR, low anterior resection; APR, abdominoperineal resection

**Table 3. Unadjusted and adjusted association between pT category of colorectal cancer (pT1 versus pT2–3) and postoperative outcomes**

	Prevalence of outcome		Unadjusted		Adjusted <sup>‡</sup>	
	pT1 (n = 5170)	pT2–3 (n = 34 643)	Odds ratio*	P	Odds ratio*	P
Overall complications	1219 (23.6)	609 (27.7)	0.80 (0.75, 0.86)	< 0.001	0.90 (0.84, 0.97)	0.008
Surgical complications	650 (12.6)	4684 (13.5)	0.92 (0.84, 1.00)	0.062	0.93 (0.84, 1.02)	0.119
Severe complications <sup>†</sup>	427 (8.3)	3284 (9.5)	0.86 (0.77, 0.96)	0.005	0.89 (0.80, 1.01)	0.061
Mortality	87 (1.7)	880 (2.5)	0.66 (0.53, 0.82)	< 0.001	0.94 (0.74, 1.19)	0.604

Values in parentheses are percentages unless indicated otherwise; \* values in parentheses are 95 per cent confidence intervals. <sup>†</sup> Reintervention and/or death. <sup>‡</sup> Adjusted for age (continuous), sex (men versus women), cardiac co-morbidity, pulmonary co-morbidity, neurological co-morbidity, ASA grade (I–II versus III–V), history of abdominal surgery (yes versus no), BMI (continuous), preoperative complications (yes versus no), tumour location (rectum versus colon), detection method (non-screen-detected versus screen-detected), year of surgery (continuous), type of procedure (open versus laparoscopic versus laparoscopic + conversion), type of surgery (right colectomy, left colectomy, sigmoid resection, low anterior resection, abdominoperineal resection, (sub)total colectomy or other procedure), lymph node yield (less than 12 versus 12 or more), pN category (N0 versus N1 versus N2).

## DISCUSSION

This population-based cohort study demonstrates that patients undergoing elective bowel resections for pT1 colorectal cancer have similar risks for surgical complications, severe complications and mortality as those undergoing elective bowel resections for pT2–3 colorectal carcinoma. The absolute difference in overall complication rate following pT1 versus pT2–3 was, although statistically significant, considered minor and therefore of little clinical relevance. Implementation of colorectal cancer screening aims to increase cancer-specific survival by diagnosing disease at an earlier stage, but also introduces treatment dilemmas. Early-stage tumours do not necessarily lead to safer surgical procedures.

The risks of postoperative complications after elective surgery for pT1 colorectal cancer have not been well described in previous studies. This is surprising because this type of surgery is frequently performed in clinical practice. Existing literature has focused mainly on advanced staged tumours in patients undergoing emergency surgery, and includes limited analysis of mortality with no morbidity estimates. In the present study an overall postoperative 30-day mortality rate of 2.4 per cent was observed for all patients, comparable with previous population-based studies<sup>11,12,23–25</sup> evaluating mortality risk in patients undergoing elective colorectal cancer resection (1.8–3.5 per cent). Previous reported relaparotomy rates after surgery for colorectal cancer range from 5.8 to 7.2 per cent<sup>26</sup>, in accordance with the present study. A recently published study<sup>27</sup> on surgical risks after surgery for non-malignant colorectal polyps showed a low overall 30-day mortality rate of 0.7 per cent and a postoperative adverse event rate of 14 per cent. This, however, might be an underestimation as the American College of Surgeons' National Surgical Quality Improvement Program is not representative of all hospitals in the USA. A recently published multicentre

study<sup>28</sup> from the Netherlands with more than 900 patients undergoing surgery for benign colorectal polyps showed a 30-day mortality rate of 1.4 per cent, which is more in line with the present findings.

Risk factors for severe complications after pT1 colorectal cancer surgery included sex, ASA grade, previous abdominal surgery, type of procedure and type of surgery. This is in line with previous publications, as these factors are frequently used in prognostic scoring for colorectal cancer surgery.<sup>16,18,19,29,30</sup> Most of these existing scoring systems have been based on data of patients with more advanced colorectal carcinoma and include factors such as urgency, perioperative contamination, disseminated cancer, ascites and signs of hypovolaemic shock, which are irrelevant in most early-stage colorectal cancers.<sup>29</sup> The predictive model of the Association of Coloproctology of Great Britain and Ireland was based on a cohort in which 90 per cent of patients had advanced colorectal cancer.<sup>31</sup> The data used to produce the colorectal (CR)-POSSUM model were taken from a wide range of procedures, and more than 30 per cent of the 6790 included procedures were non-elective. In the present study, patient factors such as age, co-morbidity, BMI, tumour location, screening status and pN status were not predictive for severe complications. There has been long-standing controversy about whether age and higher BMI are associated with worse perioperative outcomes. A recent meta-analysis<sup>10</sup> of the effect of BMI failed to show significant influence on overall mortality or reoperation/reintervention rate after laparoscopic colorectal surgery.

A major strength of this study is its nationwide population-based design. Data are compared annually with those in the National Cancer Registry, and show nearly 100 per cent completeness<sup>13,14</sup>, thereby reflecting daily clinical practice. It should be emphasized that patients who had neoadjuvant treatment or were operated on in the emergency setting were not included to avoid major confounding of postoperative outcomes. Several limitations should be mentioned. Inherent to a retrospective analysis, unmeasured confounding could be a source of bias. Although adjusting for possible confounders in multivariable analyses including screening status, a healthy user bias cannot be excluded. In previous papers, common factors such as educational level and regular check-up experience were identified as determinants of participation in colorectal cancer screening.<sup>33</sup> Therefore, screened participants could be less vulnerable for postoperative complications, regardless of pT status. The stratified risk model might slightly overestimate the actual risk, because of the decline of short-term mortality after colorectal surgery in the past decade, which was shown in this study as well as in other population-based studies.<sup>24</sup> Finally, the proportion of patients with pT1 colorectal cancer that was clinically staged correctly was not known. Diagnosis by endoscopy or imaging can be misleading and either overestimate or underestimate the actual tumour stage. This may influence surgical risks and oncological benefit in either direction.

Screening programmes target a population regardless of life expectancy. Additional surgery in patients with high-risk pT1 colorectal cancer should be well considered. Clinicians should estimate the patient's competing risks of morbidity and mortality. The risk stratification (*Fig. 4*) helps to estimate individual risks of significant morbidity and can be used before surgery in shared decision-making of whether or not to perform completion surgery for pT1 colorectal cancer.

## REFERENCES

1. Toes-Zoutendijk E, Kooyker AI, Elferink MA, Spaander MCW, Dekker E, Koning HJ *et al.*; LECO working group. Stage distribution of screen-detected colorectal cancers in the Netherlands. *Gut* 2018; 67: 1745-1746.
2. Greuter MJ, Demirel E, Lew JB, Berkhof J, Xu XM, Canfell K *et al.* Long-term impact of the Dutch Colorectal Cancer Screening Program on cancer incidence and mortality-model-based exploration of the serrated pathway. *Cancer Epidemiol Biomarkers Prev* 2016; 25: 135-144.
3. Williams JG, Pullan RD, Hill J, Horgan PG, Salmo E, Buchanan GN *et al.*; Association of Coloproctology of Great Britain and Ireland. Management of the malignant colorectal polyp: ACPGBI position statement. *Colorectal Dis* 2013; 15(Suppl 2): 1-38.
4. Backes Y, de Vos Tot Nederveen Cappel WH, van Bergeijk J, Ter Borg F, Schwartz MP, Spanier BWM *et al.* Risk for incomplete resection after macroscopic radical endoscopic resection of T1 colorectal cancer: a multicenter cohort study. *Am J Gastroenterol* 2017; 112: 785-796.
5. Ikematsu H, Yoda Y, Matsuda T, Yamaguchi Y, Hotta K, Kobayashi N *et al.* Long-term outcomes after resection for submucosal invasive colorectal cancers. *Gastroenterology* 2013; 144: 551-559.
6. Lee SJ, Kim A, Kim YK, Park WY, Kim HS, Jo HJ *et al.* The significance of tumor budding in T1 colorectal carcinoma: the most reliable predictor of lymph node metastasis especially in endoscopically resected T1 colorectal carcinoma. *Hum Pathol* 2018; 78: 8-17.
7. Benizri EI, Bereder JM, Rahili A, Bernard JL, Vanbiervliet G, Filippi J *et al.* Additional colectomy after colonoscopic polypectomy for T1 colon cancer: a fine balance between oncologic benefit and operative risk. *Int J Colorectal Dis* 2012; 27: 1473-1478.
8. Choi DH, Sohn DK, Chang HJ, Lim SB, Choi HS, Jeong SY. Indications for subsequent surgery after endoscopic resection of submucosally invasive colorectal carcinomas: a prospective cohort study. *Dis Colon Rectum* 2009; 52: 438-445.
9. Bakker IS, Grossmann I, Henneman D, Havenga K, Wiggers T. Risk factors for anastomotic leakage and leak-related mortality after colonic cancer surgery in a nationwide audit. *Br J Surg* 2014; 101: 424-432.
10. He Y, Wang J, Bian H, Deng X, Wang Z. BMI as a predictor for perioperative outcome of laparoscopic colorectal surgery: a pooled analysis of comparative studies. *Dis Colon Rectum* 2017; 60: 433-445.
11. Kodeda K, Nathanaelsson L, Jung B, Olsson H, Jestin P, Sjövall A *et al.* Population-based data from the Swedish Colon Cancer Registry. *Br J Surg* 2013; 100: 1100-1107.
12. Sjo OH, Larsen S, Lunde OC, Nesbakken A. Short term outcome after emergency and elective surgery for colon cancer. *Colorectal Dis* 2009; 11: 733-739.
13. Van Leersum NJ, Snijders HS, Henneman D, Kolfsochoten NE, Gooiker GA, ten Berge MG *et al.* The Dutch surgical colorectal audit. *Eur J Surg Oncol* 2013; 39: 1063-1070.
14. Snijders HS, van den Broek CB, Wouters MW, Meershoek-Klein Kranenbarg E, Wiggers T, Rutten H *et al.* An increasing use of defunctioning stomas after low anterior resection for rectal cancer. Is this the way to go? *Eur J Surg Oncol* 2013; 39: 715-720.
15. Bernhoff R, Sjövall A, Buchli C, Granath F, Holm T, Martling A. Complete mesocolic excision in right-sided colon cancer does not increase severe short-term postoperative adverse events. *Colorectal Dis* 2018; 20: 383-389.
16. Leung E, McArdle K, Wong LS. Risk-adjusted scoring systems in colorectal surgery. *Int J Surg* 2011; 9: 130-135.
17. Richards CH, Leitch FE, Horgan PG, McMillan DC. A systematic review of POSSUM and its related models as predictors of post-operative mortality and morbidity in patients undergoing surgery for colorectal cancer. *J Gastrointest Surg* 2010; 14: 1511-1520.
18. Fazio VW, Tekkis PP, Remzi F, Lavery IC. Assessment of operative risk in colorectal cancer surgery: the Cleveland Clinic Foundation colorectal cancer model. *Dis Colon Rectum* 2004; 47: 2015-2024.
19. Alves A, Panis Y, Manton G, Slim K, Kwiatkowski F, Vicaud E. The AFC score: validation of a 4-item predicting score of postoperative mortality after colorectal resection for cancer or diverticulitis: results of a prospective multicenter study in 1049 patients. *Ann Surg* 2007; 246: 91-96.
20. <EPATH>National Collaborating Centre for Cancer (UK). *Colorectal Cancer: The Diagnosis and Management of Colorectal Cancer*. <https://www.ncbi.nlm.nih.gov/books/NBK116633/> [accessed 21 November 2018].
21. <B>Little RJA, Rubin DB. A taxonomy of missing-data methods. In *Statistical Analysis with Missing Data* (2nd edn). Wiley: New York, 2002; 19-23.
22. Van Buuren S, Groothuis-Oudshoorn K. Mice: multivariate imputation by chained equations in R. *J Stat Softw* 2011; 45: 1-67.
23. Murray AC, Mauro C, Rein J, Kiran RP. 30-day mortality after elective colorectal surgery can reasonably be predicted. *Tech Coloproctol* 2016; 20: 567-576.
24. Iversen LH, Ingeholm P, Gögenur I, Laurberg S. Major reduction in 30-day mortality after elective colorectal cancer surgery: a nationwide population-based study in Denmark 2001-2011. *Ann Surg Oncol* 2014; 21: 2267-2273.
25. Papageorge CM, Zhao Q, Foley EF, Harms BA, Heise CP, Carchman EH *et al.* Short-term outcomes of minimally invasive versus open colectomy for colon cancer. *J Surg Res* 2016; 204: 83-93.
26. Mik M, Magdzinska J, Dziki L, Tchorzewski M, Trzcinski R, Dziki A. Relaparotomy in colorectal cancer surgery – do any factors influence the risk of mortality? A case controlled study. *Int J Surg* 2014; 12: 1192-1197.
27. Peery AF, Shaheen NJ, Cools KS, Baron TH, Koruda M, Galanko JA *et al.* Morbidity and mortality after surgery for nonmalignant colorectal polyps. *Gastrointest Endosc* 2018; 87: 243-250.e2.

28. Bronzwaer MES, Koens L, Bemelman WA, Dekker E, Fockens P; COPOS study group. Volume of surgery for benign colorectal polyps in the last 11 years. *Gastrointest Endosc* 2018; 87: 552-561.e1.
29. Kawai K, Sunami E, Yamaguchi H, Ishihara S, Kazama S, Nozawa H et al. Nomograms for colorectal cancer: a systematic review. *World J Gastroenterol* 2015; 21: 11 877-11 886.
30. van der Sluis FJ, Espin E, Vallribera F, de Bock GH, Hoekstra HJ, van Leeuwen BL et al. Predicting postoperative mortality after colorectal surgery: a novel clinical model. *Colorectal Dis* 2014; 16: 631-639.
31. Tekkis PP, Poloniecki JD, Thompson MR, Stamatakis JD. Operative mortality in colorectal cancer: prospective national study. *BMJ* 2003; 327: 1196-1201.
32. Tekkis PP, Prytherch DR, Kocher HM, Senapati A, Poloniecki JD, Stamatakis JD et al. Development of a dedicated risk-adjustment scoring system for colorectal surgery (colorectal POSSUM). *Br J Surg* 2004; 91: 1174-1182.
33. Tabuchi T, Nakayama T, Fukushima W, Matsunaga I, Ohfuji S, Kondo K et al. Determinants of participation in prostate cancer screening: a simple analytical framework to account for healthy-user bias. *Cancer Sci* 2015; 106: 108-114.



## APPENDICES

**Table S1. Short-term outcomes (within 30 days) of surgically treated patients with colorectal carcinoma (2009–2016)**

	<b>T1 n=5 170</b>	<b>T2-3 n=34 643</b>	<b>P-value</b>
	<i>n (%)</i>	<i>n (%)</i>	
Overall complications			<0.001
No	3 942 (76.2)	24 916 (71.9)	
Yes	1 219 (23.6)	9 606 (27.7)	
Unknown	9 (<1)	118 (0.3)	
Surgical complications			0.064
No	4 520 (87.4)	29 959 (86.5)	
Yes	650 (12.6)	4 684 (13.5)	
Other complications			
Pulmonary	185 (3.6)	1 610 (4.6)	0.001
Cardiac	109 (2.1)	1 057 (3.1)	<0.001
Thromboembolic	23 (<1)	188 (0.5)	0.409
Infection (other than pulmonary/surgical)	124 (2.4)	1 160 (3.3)	<0.001
Neurological	54 (1.0)	435 (1.3)	0.224
Other	289 (5.6)	1 892 (5.5)	0.697
Mortality			0.002
No	5 074 (98.1)	33 618 (97.0)	
Yes	87 (1.7)	880 (2.5)	
Unknown	10 (<1)	145 (0.4)	
Cause of death <sup>^</sup>			0.521
CRC	0	9 (1)	
Surgery	38 (44)	333 (37.8)	
Other cause	32 (37)	327 (37.2)	
Unknown	17 (20)	211 (24.0)	
Anastomotic leakage <sup>*</sup>	176 (3.7)	1 247 (3.9)	0.358
Re-intervention	369 (7.1)	2 645 (7.6)	0.216
Re-admission	254 (4.9)	1 706 (4.9)	0.997
Severe complications (re-intervention and/or mortality)	427 (8.3)	3 284 (9.5)	<0.001

<sup>^</sup> Percentage of patients deceased<30d, <sup>\*</sup> percentage of patients with anastomosis

**Table S2.** Univariable and multivariable analyses of variables associated with severe complication rate following colorectal surgery for pT1 colorectal cancer

Parameter	Univariable analyses			Multivariable analyses		
	OR	CI	P-value	OR	CI	P-value
Age, years	<b>1.02</b>	<b>1.01-1.04</b>	<b>&lt;0.001</b>	1.01	1.00-1.02	0.062
Gender						
Female	Reference			Reference		
Male	<b>2.15</b>	<b>1.72-2.69</b>	<b>&lt;0.001</b>	<b>2.21</b>	<b>1.76-2.79</b>	<b>&lt;0.001</b>
Comorbidity						
Cardiac	<b>1.71</b>	<b>1.39-2.10</b>	<b>&lt;0.001</b>	<b>1.26</b>	<b>1.00-1.59</b>	<b>0.049</b>
Pulmonary	<b>1.57</b>	<b>1.23-2.02</b>	<b>&lt;0.001</b>	1.28	0.99-1.67	0.064
Neurological	0.94	0.70-1.26	0.660			
ASA						
I-II	Reference			Reference		
III-V	<b>1.95</b>	<b>1.57-2.43</b>	<b>&lt;0.001</b>	<b>1.41</b>	<b>1.10-1.81</b>	<b>0.007</b>
Previous abdominal surgery						
No	Reference			Reference		
Yes	<b>1.27</b>	<b>1.04-1.56</b>	<b>0.019</b>	<b>1.25</b>	<b>1.01-1.56</b>	<b>0.041</b>
BMI	1.02	1.00-1.05	0.051			
Preoperative complication						
No	Reference					
Yes	1.29	0.96-1.72	0.088			
Tumour location						
Colon	Reference			Reference		
Rectum	<b>1.61</b>	<b>1.26-2.06</b>	<b>&lt;0.001</b>	0.87	0.25-2.99	0.824
Detection method						
Non-screen-detected	Reference					
Screen-detected	0.84	0.67-1.04	0.112			
Year of surgery	1.05	1.00-1.10	0.058			
Type of procedure						
Laparoscopic	Reference			Reference		
Open	<b>1.91</b>	<b>1.52-2.40</b>	<b>&lt;0.001</b>	<b>1.60</b>	<b>1.26-2.04</b>	<b>&lt;0.001</b>
Laparoscopic + conversion <sup>^</sup>	<b>2.34</b>	<b>1.68-3.27</b>	<b>&lt;0.001</b>	<b>1.89</b>	<b>1.33-2.67</b>	<b>&lt;0.001</b>
Type of surgery						
Right colectomy <sup>*</sup>	Reference			Reference		
Left colectomy	1.11	0.77-1.61	0.579	1.10	0.76-1.61	0.611
Sigmoid resection	<b>0.59</b>	<b>0.46-0.76</b>	<b>&lt;0.001</b>	<b>0.67</b>	<b>0.52-0.87</b>	<b>0.002</b>
LAR	1.34	1.00-1.80	0.052	1.86	0.52-6.60	0.341
APR	1.25	0.65-2.39	0.508	1.68	0.42-6.63	0.462
(Sub)total colectomy <sup>#</sup>	<b>2.08</b>	<b>1.28-3.41</b>	<b>0.003</b>	<b>2.38</b>	<b>1.40-4.05</b>	<b>0.001</b>
Other	0.64	0.20-2.09	0.463	0.62	0.18-2.18	0.454
Lymph node yield						
<12	Reference					
≥12	1.12	0.92-1.38	0.255			
Pathological N-stage						
N0	Reference					
N1	0.76	0.52-1.09	0.134			
N2	0.58	0.30-1.15	0.117			

OR = Odds Ratio, 95% CI = 95% Confidence Interval LAR = Low Anterior Resection, APR = Abdomino-perineal resection. <sup>^</sup> From laparoscopic to open procedure, <sup>\*</sup> Including ileocecal resection and transverse resection, <sup>#</sup> Including panproctocolectomy and subtotal colectomy

