



Universiteit
Leiden
The Netherlands

The abundance of arbuscular mycorrhiza in soils is linked to the total length of roots colonized at ecosystem level

Barceló , M.; Bodegom, P.M. van; Tedersoo, L.; Haan, N. den; Veen, G.F.; Ostonen, I.; ... ; Soudzilovskaia, N.A.

Citation

Barceló, M., Bodegom, P. M. van, Tedersoo, L., Haan, N. den, Veen, G. F., Ostonen, I., ... Soudzilovskaia, N. A. (2020). The abundance of arbuscular mycorrhiza in soils is linked to the total length of roots colonized at ecosystem level. *Plos One*, 15(9), e0237256.
doi:10.1371/journal.pone.0237256

Version: Publisher's Version
License: [Creative Commons CC BY 4.0 license](https://creativecommons.org/licenses/by/4.0/)
Downloaded from: <https://hdl.handle.net/1887/138773>

Note: To cite this publication please use the final published version (if applicable).

RESEARCH ARTICLE

The abundance of arbuscular mycorrhiza in soils is linked to the total length of roots colonized at ecosystem level

Milagros Barceló^{1*}, Peter M. van Bodegom¹, Leho Tedersoo², Nadja den Haan¹, G. F. (Ciska) Veen³, Ivika Ostonen⁴, Krijn Trimbos¹, Nadejda A. Soudzilovskaia¹

1 Environmental Biology Department, Institute of Environmental Sciences, Leiden University, Leiden, Netherlands, **2** Natural History Museum, University of Tartu, Tartu, Estonia, **3** Department of Terrestrial Ecology, Netherlands Institute of Ecology, Wageningen, The Netherlands, **4** University of Tartu, Institute of Ecology and Earth Sciences, Tartu, Estonia

* m.barcelo@cml.leidenuniv.nl



OPEN ACCESS

Citation: Barceló M, van Bodegom PM, Tedersoo L, den Haan N, Veen GF(Ciska), Ostonen I, et al. (2020) The abundance of arbuscular mycorrhiza in soils is linked to the total length of roots colonized at ecosystem level. PLoS ONE 15(9): e0237256. <https://doi.org/10.1371/journal.pone.0237256>

Editor: Cheng Gao, University of California Berkeley, UNITED STATES

Received: April 10, 2020

Accepted: July 22, 2020

Published: September 11, 2020

Copyright: © 2020 Barceló et al. This is an open access article distributed under the terms of the [Creative Commons Attribution License](https://creativecommons.org/licenses/by/4.0/), which permits unrestricted use, distribution, and reproduction in any medium, provided the original author and source are credited.

Data Availability Statement: Raw Illumina data sets have been deposited in the Sequence Read Archive (SRA) under BioProject PRJNA644291 (<https://www.ncbi.nlm.nih.gov/bioproject/?term=PRJNA644291>).

Funding: N.A.S was supported a VIDI grant (016.161.318) from The Netherlands Organization for Scientific Research (NWO) (<https://www.nwo.nl/en>) G.F.V was supported by a VENI grant from the Netherlands Organization for Scientific Research (NWO) (<https://www.nwo.nl/en>) The

Abstract

Arbuscular mycorrhizal fungi (AMF) strongly affect ecosystem functioning. To understand and quantify the mechanisms of this control, knowledge about the relationship between the actual abundance and community composition of AMF in the soil and in plant roots is needed. We collected soil and root samples in a natural dune grassland to test whether, across a plant community, the abundance of AMF in host roots (measured as the total length of roots colonized) is related to soil AMF abundance (using the neutral lipid fatty acids (NLFA) 16:1 ω 5 as proxy). Next-generation sequencing was used to explore the role of community composition in abundance patterns. We found a strong positive relationship between the total length of roots colonized by AMF and the amount of NLFA 16:1 ω 5 in the soil. We provide the first field-based evidence of proportional biomass allocation between intra- and extraradical AMF mycelium, at ecosystem level. We suggest that this phenomenon is made possible by compensatory colonization strategies of individual fungal species. Finally, our findings open the possibility of using AMF total root colonization as a proxy for soil AMF abundances, aiding further exploration of the AMF impacts on ecosystems functioning.

Introduction

Arbuscular mycorrhizal fungi (AMF) are widespread obligate symbionts forming associations with 85% of the vascular plant species [1], dominating most of the tropical forest and temperate grassland ecosystems [2, 3]. Besides the fundamental role of AMF in plant nutrition and fitness [4, 5], it is widely recognized that AMF have a substantial impact on ecosystem functioning. To understand this role, it is important to distinguish between the “intraradical mycelium”, which is the fungal biomass inside the root and the “extraradical mycelium” which is the fungal body in soil [6]. While the intraradical part will likely only affect ecosystem processes indirectly through host plant nutrition and performance [7], the extraradical mycelium is directly related to ecosystem functioning. AMF extraradical mycelium can modify the soil

fundors had no role in study design, data collection and analysis, decision to publish, or preparation of the manuscript.

Competing interests: The authors have declared that no competing interests exist.

microbial community structure and composition [8–11], and enhance soil aggregation via stabilization of soil aggregates [12, 13]. The extraradical mycelium also acts as an active distributor of carbon (C) in the soil, feeding soil heterotrophs [14, 15] and stabilizing C in recalcitrant organic compounds [16, 17].

A comprehensive understanding of the impacts of AMF in the above-mentioned processes and the incorporation of mycorrhizal pathways into biogeochemical models requires quantitative measurements of AMF abundances in both of their functional compartments, roots and soils [18]. Information about AMF abundances in roots (typically expressed as percentage root length colonized) is common in the literature [e.g. 19–21]. In contrast, and despite their direct impact on C and nutrient cycling [7, 22, 23], the abundance of AMF extraradical mycelium in natural ecosystems is rarely reported and its relation to abundances of AMF in the plant roots is poorly understood.

So far, information based on studies of single fungal isolates indicates a general increase of AMF extraradical mycelium during the process of root colonization by AMF [24, 25]. This suggests that within the same single AMF species isolate, a higher intraradical C allocation generally leads to a higher C allocation in the soil compartment. However, natural ecosystems comprise a heterogeneous network of AMF species that may have remarkable differences in the proportion of biomass they allocate inside and outside the roots [26–28]. Laboratory studies demonstrate that, for instance, members of the AMF family Glomeraceae (order Glomerales) are known to have high intraradical colonization but only little expansion into the soil; members of Gigasporaceae (order Diversisporales) have the opposite colonization strategy and members of Acaulosporaceae (order Diversisporales) have low levels of both soil and root colonization [28]. Therefore, in a natural ecosystem where different AMF colonization strategies potentially coexist, whether an increase of AMF colonization in roots results in an increase of AMF mycelium in the soil is less evident and remains unsolved. Obtaining a field-based quantitative answer to this question will 1) provide important insights into the mechanisms of C and nutrient flow through mycorrhizal pathways at ecosystem level, and 2) will inform us about the feasibility of using estimates of AMF abundance in roots as a proxy of AMF soil abundance.

Here, we explore the quantitative patterns of AMF abundances in roots vs soil and the corresponding community composition in a natural dune grassland to answer the following questions: 1) is the level of colonization by AMF in the roots positively related to the abundance of AMF mycelium in the soil, within a natural ecosystem? And if so, 2) do different AMF colonization strategies influence the relationship between AMF abundance in root and soil compartments? We hypothesize that, if at the ecosystem level a single colonization strategy dominates, the proportion of biomass allocated by AMF in roots and soil compartments will remain constant, and therefore a relationship between the biomass in soil vs roots may be expected. If root and soil colonization strategies co-occur along the plant community but their intra- and extraradical relative abundances are complementary, a correlation between root and soil AMF biomass may also be expected (see Fig 1).

The intensity of plant root colonization by mycorrhizal fungal is typically expressed as percent of root length (AM) or root tips (ECM) colonized by fungi. Higher intensities of root colonization by AM fungi are associated with greater mycorrhizal dependency of the host plant (measured as a relative increase in biomass of a plant in the presence of mycorrhizae) (Wilson & Hartnett, 1998; Treseder, 2013)

Methods

1. Sample collection

Plant and soil samples were collected in May 2017 in the Kennemer Dunes National Park (52.43 N, 4.57 E), a 25 km² dune ecosystem situated along the north coast of the Netherlands.

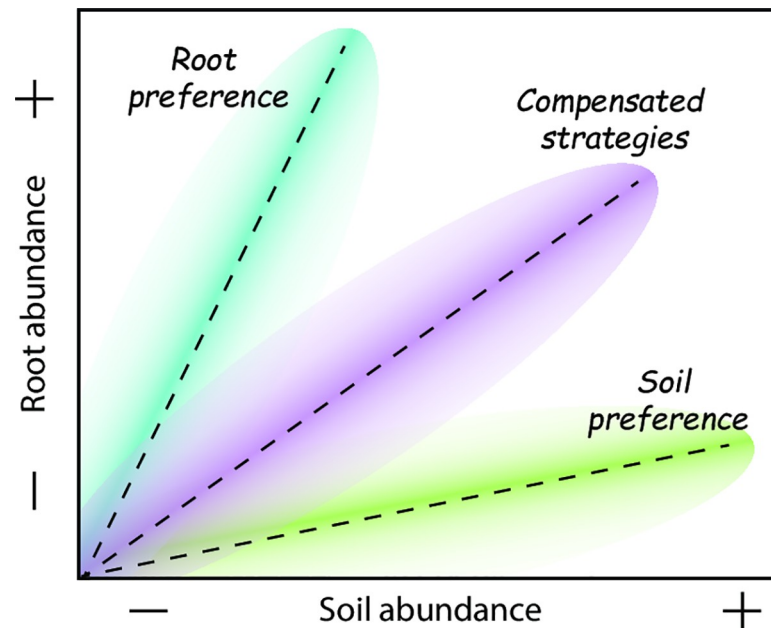


Fig 1. Conceptual scheme indicating possible patterns between the abundance of AMF in roots vs soil compartments. Dotted lines and coloured shapes represent three different scenarios depending on the predominance of AMF taxa with different colonization strategies. A first scenario (green shape) represents an AMF community dominated by species with preference for soil colonization. A second scenario (blue shape) represents an AMF community dominated by species with a preference for root colonization. In a third scenario (purple shape) both root and soil colonization strategies are present but their abundance tends to even out. Finally, a fourth scenario where no relationship is expected (not shown in the graph) if a) community assembly along the plant community is random (no compensated colonization strategies) or if b) the biomass allocation in root and soil of individual AMF taxa is not coupled.

<https://doi.org/10.1371/journal.pone.0237256.g001>

Based on a visual inspection of vegetation conditions to avoid non-mycorrhizal plants, a 350-meter-long transect was established, covering a gradient from moist to dry soils. Such natural moisture gradient was used as a mean to ensure sampling of plant communities featuring distinct levels of AMF root colonization. This expectation is based on the fact that AMF are suppressed by high soil moisture [29, 30]. Within this transect, fifteen sampling points were established. Areas with known non-mycorrhizal species were avoided.

At each sampling point, we established a circular area of approximately 3 m diameter, where five subsamples, separated from each other by at least 1 m, were collected from the top-soil layer (15 cm). These subsamples were later pooled and homogenized to obtain a total volume 1 dm³ of soil. During the collection, samples were kept frozen using dry ice to avoid degradation of organic compounds.

From each sample, soils and roots were separated by sieving. The extracted roots were carefully cleaned with tap water and weighted. Half of the root samples were preserved in 50% ethanol for AMF colonization measurements while the rest was oven-dried (35°C, 30 h) for molecular analysis.

2. Root colonization

To estimate AMF root colonization, roots preserved in ethanol were first cut into small pieces (ca 1 cm each), cleaned with 2.5% KOH and stained by autoclaving in 5% Pelikan Blue ink [31]. The percentage of colonization was estimated by examining vesicles, hyphae and arbuscular structures with a grid line intersect procedure [32]. Total root length was measured with

the WinRhizo™ Pro 2003b image analysis system (at 400 dpi; Regent Instruments Inc., Ville de Québec, QC, Canada). Standing root length colonized by AMF (used as a proxy of AMF abundance in roots) was calculated by multiplying the percentage of colonization and total root length per volume of soil.

3. Extraradical mycelium abundance

The abundance of AMF extraradical mycelium was measured using fatty acid analysis. The lipid extraction from 3g of freeze-dried soil was performed using a one-phase mixture following Bligh and Dyer [33] and modified by Frostegård et al [34]. The neutral lipid fatty acid (NLFA) 16:1 ω 5 was used as a proxy for AMF abundance [35, 36].

4. AMF community structure

DNA was extracted following the protocol of Tedersoo et al [37] using a PowerSoil DNA Isolation Kit (Mo Bio Laboratories, Inc., Carlsbad, CA, USA). We used 0.25 g of dried soil and 0.1 g of ground dried roots. Polymerase chain reaction (PCR) was performed using the primer pair ITS9mun/NS8a [38] targeting the rRNA 18S gene V9 variable region. This universal primer set was selected to cover most of the fungi including phylum *Glomeromycota* across an intron-free fragment of equal length [39]. The PCR program consisted of 15 min incubation at 95°C, followed by 25 cycles of 30 s at 95°C, 30 s at 55°C and 50 s at 72°C. PCR products were purified using Favorgen GEL/PCR Purification Mini Kit. Amplicons were sequenced with Illumina MiSeq platform at the Estonian Genome Center.

Sequencing data were analyzed with PipeCraft [40]. To remove low-quality reads, filtering was performed with vsearch (v1.11.1) (parameters: minoverlap = 15, minlength = 50, E_max = 1, maxambigu = 0). Operational Taxonomic Units (OTU) were constructed using the UPARSE algorithm [41] at 97% sequence similarity threshold. Singleton clusters were removed. A post-clustering curation to OTU table was performed with LULU [42]. Representative OTU sequences were taxonomically assigned using SILVA (release 128) database [43] with BLAST [44] (threshold criterion $e\text{-value} < e^{-10}$). Chimera check was performed using UCHIME de novo option. No rarefaction was done because richness was unrelated to sequencing depth. Raw Illumina data sets have been deposited in the Sequence Read Archive (SRA) under BioProject PRJNA644291. The resulting OTU table was deposited in Figshare public repository (<https://doi.org/10.6084/m9.figshare.9785930.v1>).

5. Statistical analysis

The relationship between root length colonization and NLFA abundances was assessed using a linear model for vesicles, arbuscules and hyphae separately. Differences between root and soil AMF community structures were visualized using non-metric multidimensional scaling (NMDS) with Bray–Curtis dissimilarity using “metaMDS” function in R Package “vegan”. Root and soil community differences were tested for statistical significance using permutational multivariate analysis of variance (PERMANOVA) (“adonis” function in R Package “vegan”). PERMANOVA’s assumption of homogeneity in within-groups variability was tested using “betadisper” function in R Package “vegan”. All statistical analyses were performed using R 3.4.3 [45].

Results

1. Relationship between intra- and extraradical mycelium

The linear regression models showed a significant positive relationship between the amounts of NLFA 16:1 ω 5 in the soil and total root length colonization at the studied community (Fig 2).

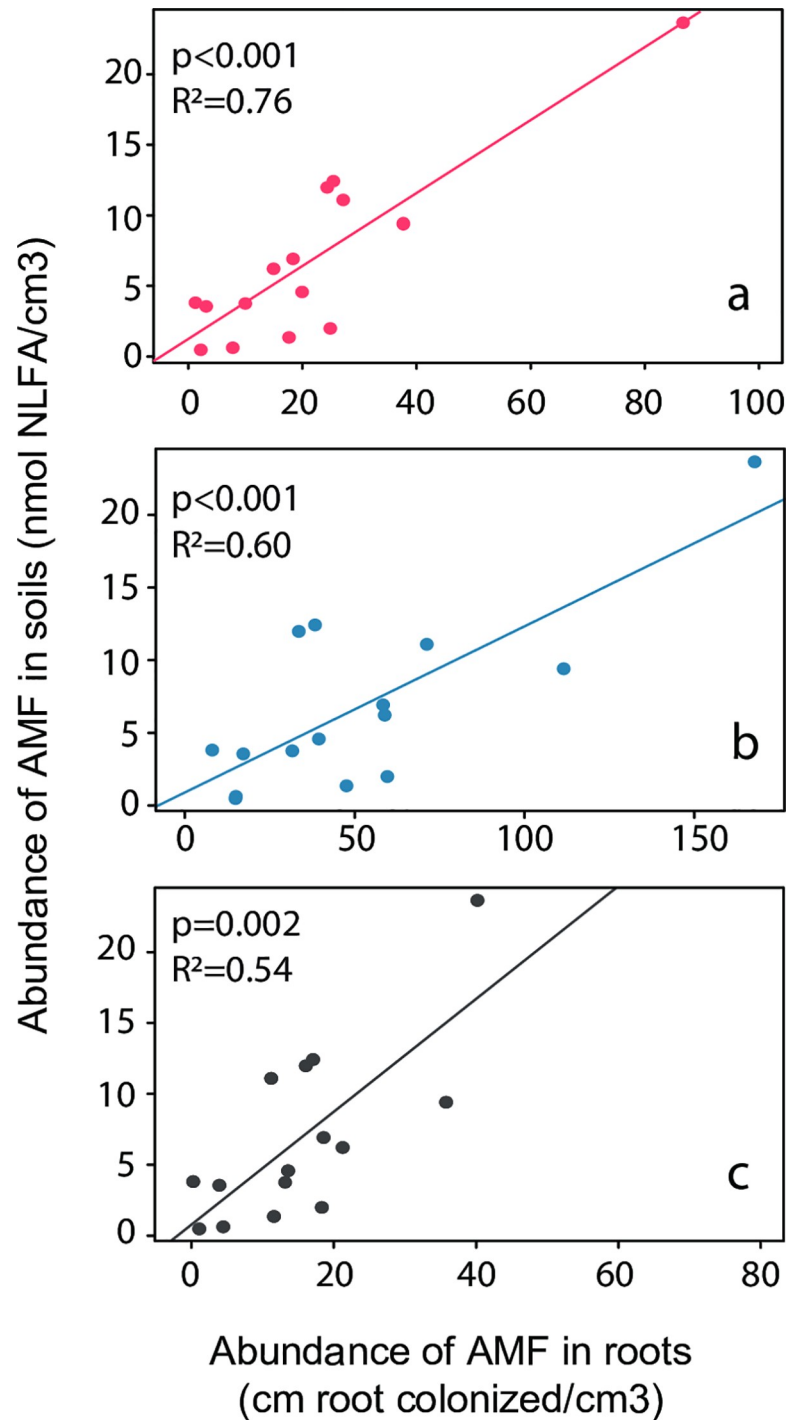


Fig 2. Linear relation between the AMF biomass in the soil and the total root length colonized for the three detected AMF structures. (a) arbuscules (b) hyphae and (c) vesicle. NLFA 16:1w5 was used as a proxy of the AMF biomass in the soil.

<https://doi.org/10.1371/journal.pone.0237256.g002>

This positive relation was consistent among the different AMF structures for which colonization was measured (arbuscular, hyphae and vesicles). Root colonization by arbuscular structures showed the strongest relation with NLFA 16:1w5, followed by hyphal colonization and vesicle

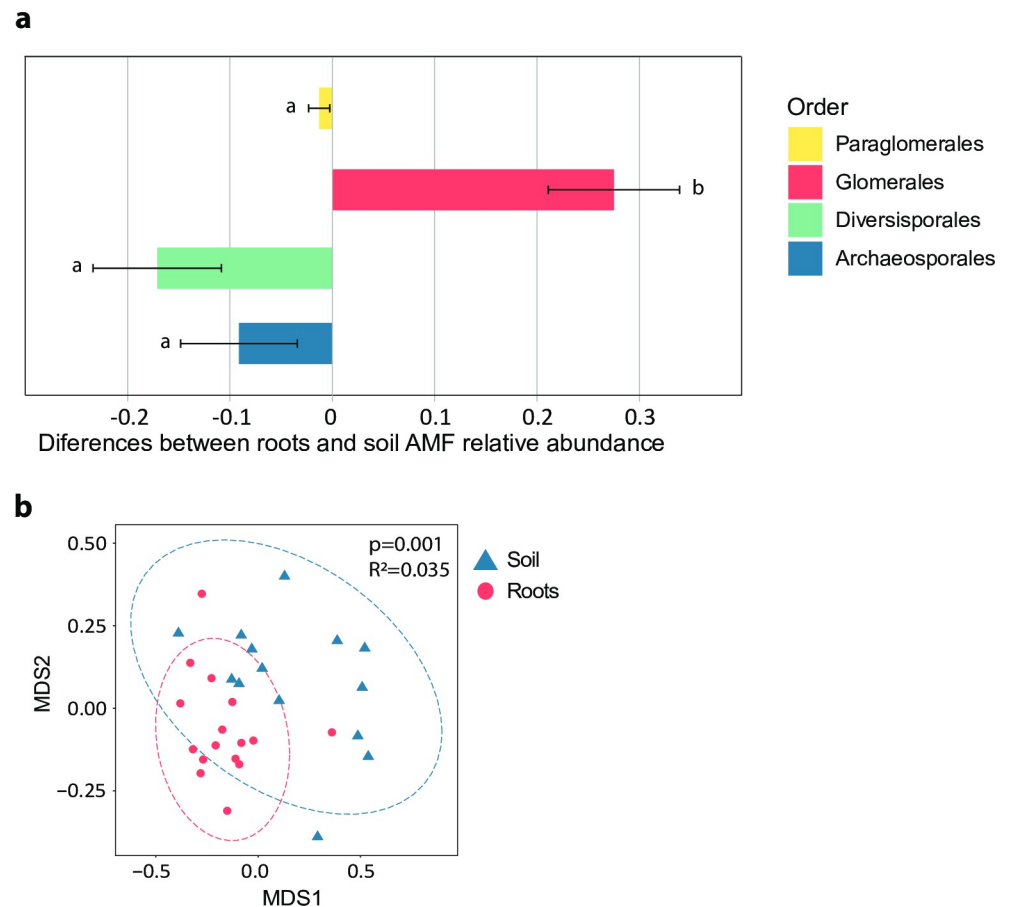


Fig 3. Differences in AMF community composition between root and soil samples. a) Means and standard error of the difference between the relative abundances of the AMF orders Archaeosporales, Diversisporales, Glomerales and Paraglomerales in soil and root samples. Positive values indicate that, on average, root samples had a higher relative proportion than their soil pairs, while negative values indicate the opposite trend. Different letters indicate significant differences between orders. b) Nonmetric multidimensional scaling (NMDS) ordination plots of arbuscular mycorrhizal fungal communities present in soil and roots compartments based on relative proportions of OTUs. Ellipses delimit the 95% confidence interval around centroids.

<https://doi.org/10.1371/journal.pone.0237256.g003>

colonization. Despite the influence of an extremely high NLFA 16:1w5 value, the relation remained highly significant when this value was removed from the input data (see Fig S1 in [S1 Appendix](#)).

2. Community composition

Community composition analysis showed a clear dominance of members of the order Glomerales in root samples (see Fig S2 in [S1 Appendix](#)). In contrast, soil samples showed a more heterogeneous composition, having in general a higher proportion of the order Diversisporales, Archaeosporales and Paraglomerales than in root samples ([Fig 3A](#)). Therefore, a general shift in the relative abundance of the four Glomeromycota orders can be seen between soil and plant roots. PERMANOVA analysis ratified this pattern showing significant differences ($R^2 = 0.035$, $p = 0.001$) in AMF community composition between soil and roots based on OTUs' relative abundances ([Fig 3B](#)).

Discussion

1. Relationship between root vs soil AMF abundance

We found a strong positive relationship between the abundance of AMF in soil and the total root length colonized. Although a similar pattern has been found before in single AMF isolates [24, 25], our results provide the first evidence of a relationship between intra- and extraradical AMF abundance at an entire plant community level in a natural ecosystem. This suggests that, even at plant community level where different AMF species are expected, plant C allocation to the symbiotic fungi is proportionally distributed between root and soil compartments.

The strong relationship found here raises the question of whether measurements of total root colonization can be used to infer information about AMF abundance in soils or vice versa. Given the relevance of AMF for ecosystem functioning, this link is promising to gain understanding of AMF distribution in soils and roots. However, the extrapolation of the patterns found in this study to different ecosystems and environmental conditions requires caution and further testing.

Firstly, while the techniques applied here (fatty acid analysis and microscopic quantification) are widely used, they are known to induce serious biases [46, 47] that may introduce uncertainties to our results. Therefore, within the framework of this research, we have explored the possibility to use molecular quantification tools (i.e. the novel digital droplet PCR technique [48]) as a potentially robust, accurate and rapid methodological alternative to assess AMF abundance in roots and soil. This test and its outcomes are presented in detail in the [S2 Appendix](#). In short, we have detected that the abundance of AMF in roots using ddPCR was positively related with the total root length colonized, while using ddPCR for examining the abundance of AMF in soil was problematic, and delivered obscured results. We conclude that ddPCR techniques can already be used for the assessment of AMF abundance in roots, while the methods of using this technique for soil samples still need further development (see [S2 Appendix](#) for recommendations).

A second potential source of uncertainties is that neither the traditional nor the molecular techniques explored here can discriminate between active and dormant stages or recently dead biomass [49]. This issue is potentially less problematic when our results are used in the context of nutrients and C cycling assessments. However, it should be considered when the assessment of ecosystem function is the main goal and differences in microbial physiological states are relevant.

2. Role of community composition

A crucial step towards further generalizations of the relationship found here is disentangling the role of AMF community composition and, specifically, the contribution of different colonization strategies (i.e. soil vs root colonizers) in affecting the relationship between root and soil abundances.

In line with the findings of several field experiments [50–52], we found that AMF community composition differed between roots and soil compartments ([Fig 3B](#)). While roots were clearly dominated by members of the order Glomerales ([Fig S2](#) in [S1 Appendix](#)), their relative abundance in soil samples tended to decrease, being partially replaced by members of the order Archaeosporales and Diversisporales ([Fig 3A](#)). This shift in community composition between root and soil reflects, as proposed by Hart and Reader [28], differences in colonization strategies among the main AMF groups.

Despite these differences in community composition, the ratio between AMF biomass in root and soil compartments remains relatively constant, as reflected by the strongly significant

linear relationship of soil vs roots abundance (Fig 2). This suggests that the second theoretical scenario presented in Fig 1 prevails in the studied system, indicating that co-occurring AMF species have compensatory colonization strategies, resulting in a robust relationship between soil and root abundances. The co-occurrence of different strategies may reflect an ecological specialization of co-existing AMF lineages to avoid competition for space and resources [53–55]. Moreover, different colonization strategies have been proposed to relate to different benefits to the plant. A more extensive extraradical mycelium is generally associated with an increase of nutrients supply to the plant [56], while a higher intensity of root colonization provides the host plant with greater protection against soil pathogens [57]. Therefore, the C flow from the host plant to their fungal partner may be distributed within different functional strategies to maximize fitness [58], which ultimately leads to coupled AMF abundances inside and outside the plant roots, even at the community level.

Even though colonization strategies seem to play an important role in assembling AMF communities, other environmental factors such as soil properties [59] or plant identity [60] can also influence AMF community composition. Within an ecosystem, the chance that higher AMF abundance in roots leads to a higher abundance in the soil will ultimately depend on the relative contribution of distinct AMF functional groups to the intra- and extra-radical biomass. Therefore, in particular conditions specific strategies may be favored, affecting the relations found here. We tested if deviations in the AMF community mean composition of the order Divesisporales (chosen as a reference group due to its higher relative abundance in soils) were related to deviations in the relationship of AMF abundance between soil and roots (Fig S3 in S1 Appendix). We found that if in a given location, the relative abundance of the order Divesisporales was higher than the community mean, the abundance of AMF in the soil was underestimated by the linear model (as indicated by positive residuals in the abundance correlation). This suggests that plant communities within which the AMF colonization strategies are not fully evened out, the relationship between intra- and extraradical may be weakened.

Further research targeting the absolute abundance of specific groups with different colonization strategies will be key to improve our understanding of AMF community assembly rules and its role in the abundance pattern of soils vs roots.

Conclusions

Our results provide the first direct evidence of a relation between AMF abundances in soils and roots at the ecosystem level, suggesting that the input from the host plant is proportionally distributed between the root-associated mycelium and the extraradical mycelium. This relationship of AMF abundances is likely to be caused by compensatory colonization strategies of individual fungal species. Specific environmental conditions may favour certain functional groups that may interfere with the coupling of AMF abundances at community level, which will demand further testing. Our findings open the possibility of using AMF intraradical abundance measurements as a proxy of extraradical abundance at a community scale. This proxy will help to estimate AMF abundance in soils, which is key towards a better understanding of terrestrial ecosystems functioning in present and future climates.

Supporting information

S1 Appendix.
(DOCX)

S2 Appendix.
(DOCX)

Acknowledgments

We gratefully thank Kaire Loit for her assistance in root staining procedure, Kai Ilves for her help during sample collection, Rasmus Puusepp for his assistance with sequencing and Sten Anslan for help with the bioinformatics pipeline. We acknowledge PWN institute and Hubert Kivit for permitting to sample in the Nationaal Park Zuid Kennemerland.

Author Contributions

Conceptualization: Milagros Barceló, Peter M. van Bodegom, Nadejda A. Soudzilovskaia.

Data curation: Leho Tedersoo.

Formal analysis: Milagros Barceló, Nadejda A. Soudzilovskaia.

Funding acquisition: Nadejda A. Soudzilovskaia.

Methodology: Milagros Barceló, Leho Tedersoo, Nadja den Haan, G. F. (Ciska) Veen, Ivika Ostonen, Krijn Trimbos, Nadejda A. Soudzilovskaia.

Resources: Leho Tedersoo, Nadejda A. Soudzilovskaia.

Supervision: Peter M. van Bodegom, Nadejda A. Soudzilovskaia.

Visualization: Milagros Barceló.

Writing – original draft: Milagros Barceló.

Writing – review & editing: Peter M. van Bodegom, Leho Tedersoo, G. F. (Ciska) Veen, Krijn Trimbos, Nadejda A. Soudzilovskaia.

References

1. Brundrett MC, Tedersoo L. Evolutionary history of mycorrhizal symbioses and global host plant diversity. *New Phytologist*. 2018; 220(4):1108–15.
2. Read DJ. Mycorrhizas in ecosystems. *Experientia*. 1991; 47(4):376–91.
3. Soudzilovskaia NA, van Bodegom PM, Terrer Moreno C, van't Zelfde M, McCallum I, Fisher JB, et al. Human-induced decrease of ectomycorrhizal vegetation led to loss in global soil carbon content. *bioRxiv*. 2018.
4. Smith SE, Read DJ. *Mycorrhizal symbiosis*: Academic Press 2008.
5. Smith SE, Smith FA. Roles of arbuscular mycorrhizas in plant nutrition and growth: new paradigms from cellular to ecosystem scales. *Annu Rev Plant Biol*. 2011; 62:227–50.
6. Leake J, Johnson D, Donnelly D, Muckle G, Boddy L, Read D. Networks of power and influence: the role of mycorrhizal mycelium in controlling plant communities and agroecosystem functioning. *Canadian Journal of Botany*. 2004; 82(8):1016–45.
7. Rillig MC. Arbuscular mycorrhizae and terrestrial ecosystem processes. *Ecology letters*. 2004; 7(8):740–54.
8. Van Der Heijden MG. Arbuscular mycorrhizal fungi as a determinant of plant diversity: in search of underlying mechanisms and general principles. *Mycorrhizal ecology*: Springer; 2002. p. 243–65.
9. Urcelay C, Diaz S. The mycorrhizal dependence of subordinates determines the effect of arbuscular mycorrhizal fungi on plant diversity. *Ecology Letters*. 2003; 6(5):388–91.
10. Toljander JF, Lindahl BD, Paul LR, Elfstrand M, Finlay RD. Influence of arbuscular mycorrhizal mycelial exudates on soil bacterial growth and community structure. *FEMS Microbiology Ecology*. 2007; 61(2):295–304.
11. Hodge A. Microbial ecology of the arbuscular mycorrhiza. *FEMS Microbiology Ecology*. 2000; 32(2):91–6.
12. Rillig MC. Arbuscular mycorrhizae, glomalin, and soil aggregation. *Canadian Journal of Soil Science*. 2004; 84(4):355–63.

13. Leifheit EF, Veresoglou SD, Lehmann A, Morris EK, Rillig MC. Multiple factors influence the role of arbuscular mycorrhizal fungi in soil aggregation—a meta-analysis. *Plant and Soil*. 2013; 374(1–2):523–37.
14. Staddon PL, Ramsey CB, Ostle N, Ineson P, Fitter AH. Rapid turnover of hyphae of mycorrhizal fungi determined by AMS microanalysis of ^{14}C . *Science*. 2003; 300(5622):1138–40.
15. Pollierer MM, Langel R, Körner C, Maraun M, Scheu S. The underestimated importance of belowground carbon input for forest soil animal food webs. *Ecology Letters*. 2007; 10(8):729–36.
16. Sousa CS, Menezes RSC, Sampaio EVdSB, Lima FS. Glomalin: characteristics, production, limitations and contribution to soils. *Semina: Ciências Agrárias*. 2012; 33(6Supl1):3033–44.
17. Treseder KK, Turner KM. Glomalin in ecosystems. *Soil Science Society of America Journal*. 2007; 71(4):1257–66.
18. Soudzilovskaia NA, Douma JC, Akhmetzhanova AA, van Bodegom PM, Cornwell WK, Moens EJ, et al. Global patterns of plant root colonization intensity by mycorrhizal fungi explained by climate and soil chemistry. *Global Ecology and Biogeography*. 2015; 24(3):371–82.
19. Akhmetzhanova AA, Soudzilovskaia NA, Onipchenko VG, Cornwell WK, Agafonov VA, Selivanov IA, et al. A rediscovered treasure: mycorrhizal intensity database for 3000 vascular plant species across the former Soviet Union. *Ecology*. 2012; 93(3):689–90.
20. Treseder KK, Cross A. Global Distributions of Arbuscular Mycorrhizal Fungi. *Ecosystems*. 2006; 9(2):305–16.
21. Treseder KK. The extent of mycorrhizal colonization of roots and its influence on plant growth and phosphorus content. *Plant and Soil*. 2013; 371(1–2):1–13.
22. Finlay RD. Ecological aspects of mycorrhizal symbiosis: with special emphasis on the functional diversity of interactions involving the extraradical mycelium. *J Exp Bot*. 2008; 59(5):1115–26.
23. Bunn RA, Simpson DT, Bullington LS, Lekberg Y, Janos DP. Revisiting the ‘direct mineral cycling’ hypothesis: arbuscular mycorrhizal fungi colonize leaf litter, but why? *The ISME journal*. 2019:1.
24. van Aarle IM, Olsson PA. Fungal lipid accumulation and development of mycelial structures by two arbuscular mycorrhizal fungi. *Applied and Environmental Microbiology*. 2003; 69(11):6762–7.
25. Van Aarle IM, Olsson PA, Söderström B. Arbuscular mycorrhizal fungi respond to the substrate pH of their extraradical mycelium by altered growth and root colonization. *New Phytologist*. 2002; 155(1):173–82.
26. Graham JH, Linderman RG, Menge JA. Development of external hyphae by different isolates of mycorrhizal *Glomus* spp. in relation to root colonization and growth of Troyer citrange. *New Phytologist*. 1982; 91(2):183–9.
27. Hart MM, Reader RJ. The role of the external mycelium in early colonization for three arbuscular mycorrhizal fungal species with different colonization strategies. *Pedobiologia*. 2005; 49(3):269–79.
28. Hart MM, Reader RJ. Taxonomic basis for variation in the colonization strategy of arbuscular mycorrhizal fungi. *New Phytologist*. 2002; 153(2):335–44.
29. Escudero V, Mendoza R. Seasonal variation of arbuscular mycorrhizal fungi in temperate grasslands along a wide hydrologic gradient. *Mycorrhiza*. 2005; 15(4):291–9.
30. Miller SP. Arbuscular mycorrhizal colonization of semi-aquatic grasses along a wide hydrologic gradient. *The New Phytologist*. 2000; 145(1):145–55.
31. Brundrett M, Bougher N, Dell B, Grove T. Working Ylith Mycorrhizas in Forestry and Agriculture. 1996.
32. McGonigle T, Miller M, Evans D, Fairchild G, Swan J. A new method which gives an objective measure of colonization of roots by vesicular—arbuscular mycorrhizal fungi. *New phytologist*. 1990; 115(3):495–501.
33. Bligh EG, Dyer WJ. A rapid method of total lipid extraction and purification. *Canadian journal of biochemistry and physiology*. 1959; 37(8):911–7.
34. Frostegård Å, Tunlid A, Bååth E. Microbial biomass measured as total lipid phosphate in soils of different organic content. *Journal of Microbiological Methods*. 1991; 14(3):151–63.
35. Olsson PA. The use of phospholipid and neutral lipid fatty acids to estimate biomass of arbuscular mycorrhizal fungi in soil. *Mycological Research*. 1995; 99(5):623–9.
36. Olsson PA, Wilhelmsson P. The growth of external AM fungal mycelium in sand dunes and in experimental systems. *Plant and Soil*. 2000; 226(2):161.
37. Tedersoo L, Bahram M, Põlme S, Kõljalg U, Yorou NS, Wijesundera R, et al. Global diversity and geography of soil fungi. *science*. 2014; 346(6213):1256688.
38. Tedersoo L, Lindahl B. Fungal identification biases in microbiome projects. *Environmental microbiology reports*. 2016; 8(5):774–9.

39. Nilsson RH, Anslan S, Bahram M, Wurzbacher C, Baldrian P, Tedersoo L. Mycobiome diversity: high-throughput sequencing and identification of fungi. *Nature Reviews Microbiology*. 2019; 17(2):95–109.
40. Anslan S, Bahram M, Hiiesalu I, Tedersoo L. PipeCraft: Flexible open-source toolkit for bioinformatics analysis of custom high-throughput amplicon sequencing data. *Molecular ecology resources*. 2017; 17(6):e234–e40.
41. Edgar RC. UPARSE: highly accurate OTU sequences from microbial amplicon reads. *Nature methods*. 2013; 10(10):996.
42. Frøslev TG, Kjølner R, Bruun HH, Ejrnæs R, Brunbjerg AK, Pietroni C, et al. Algorithm for post-clustering curation of DNA amplicon data yields reliable biodiversity estimates. *Nature communications*. 2017; 8(1):1188.
43. Quast C, Pruesse E, Yilmaz P, Gerken J, Schweer T, Yarza P, et al. The SILVA ribosomal RNA gene database project: improved data processing and web-based tools. *Nucleic acids research*. 2012; 41(D1):D590–D6.
44. Altschul SF, Gish W, Miller W, Myers EW, Lipman DJ. Basic local alignment search tool. *Journal of molecular biology*. 1990; 215(3):403–10.
45. R Core Team. R: A language and environment for statistical computing. R Foundation for Statistical Computing, Vienna, Austria. 2018.
46. Vierheilig H, Schweiger P, Brundrett M. An overview of methods for the detection and observation of arbuscular mycorrhizal fungi in roots. *Physiologia Plantarum*. 2005; 125(4):393–404.
47. Frostegård Å, Tunlid A, Bååth E. Use and misuse of PLFA measurements in soils. *Soil Biology and Biochemistry*. 2011; 43(8):1621–5.
48. Hindson CM, Chevillet JR, Briggs HA, Gallichotte EN, Ruf IK, Hindson BJ, et al. Absolute quantification by droplet digital PCR versus analog real-time PCR. *Nature methods*. 2013; 10(10):1003.
49. Blagodatskaya E, Kuzyakov Y. Active microorganisms in soil: critical review of estimation criteria and approaches. *Soil Biology and Biochemistry*. 2013; 67:192–211.
50. Hempel S, Renker C, Buscot F. Differences in the species composition of arbuscular mycorrhizal fungi in spore, root and soil communities in a grassland ecosystem. *Environmental Microbiology*. 2007; 9(8):1930–8.
51. Varela-Cervero S, Vasar M, Davison J, Barea JM, Öpik M, Azcón-Aguilar C. The composition of arbuscular mycorrhizal fungal communities differs among the roots, spores and extraradical mycelia associated with five Mediterranean plant species. *Environmental microbiology*. 2015; 17(8):2882–95.
52. Varela-Cervero S, López-García Á, Barea JM, Azcón-Aguilar C. Spring to autumn changes in the arbuscular mycorrhizal fungal community composition in the different propagule types associated to a Mediterranean shrubland. *Plant and soil*. 2016; 408(1–2):107–20.
53. Jansa J, Smith FA, Smith SE. Are there benefits of simultaneous root colonization by different arbuscular mycorrhizal fungi? *New Phytologist*. 2008; 177(3):779–89.
54. Maherali H, Klironomos JN. Phylogenetic and trait-based assembly of arbuscular mycorrhizal fungal communities. *PLoS One*. 2012; 7(5):e36695.
55. Powell JR, Parrent JL, Hart MM, Klironomos JN, Rillig MC, Maherali H. Phylogenetic trait conservatism and the evolution of functional trade-offs in arbuscular mycorrhizal fungi. *Proceedings of the Royal Society of London B: Biological Sciences*. 2009; 276(1676):4237–45.
56. Van Der Heijden MG, Scheublin TR. Functional traits in mycorrhizal ecology: their use for predicting the impact of arbuscular mycorrhizal fungal communities on plant growth and ecosystem functioning. *New Phytologist*. 2007; 174(2):244–50.
57. Newsham K, Fitter A, Watkinson A. Multi-functionality and biodiversity in arbuscular mycorrhizas. *Trends in Ecology & Evolution*. 1995; 10(10):407–11.
58. Maherali H, Klironomos JN. Influence of phylogeny on fungal community assembly and ecosystem functioning. *science*. 2007; 316(5832):1746–8.
59. Lekberg Y, Koide RT, Rohr JR, ALDRICH-WOLFE L, Morton JB. Role of niche restrictions and dispersal in the composition of arbuscular mycorrhizal fungal communities. *Journal of Ecology*. 2007; 95(1):95–105.
60. Chagnon PL, Bradley RL, Klironomos JN. Trait-based partner selection drives mycorrhizal network assembly. *Oikos*. 2015; 124(12):1609–16.