



Universiteit
Leiden
The Netherlands

Bone marrow lesions on magnetic resonance imaging in hand osteoarthritis are associated with pain and interact with synovitis

Liu, R.; Damman, W.; Reijnerse, M.; Bloem, J.L.; Rosendaal, F.R.; Kloppenburg, M.

Citation

Liu, R., Damman, W., Reijnerse, M., Bloem, J. L., Rosendaal, F. R., & Kloppenburg, M. (2017). Bone marrow lesions on magnetic resonance imaging in hand osteoarthritis are associated with pain and interact with synovitis. *Osteoarthritis And Cartilage*, 25(7), 1093-1099. doi:10.1016/j.joca.2017.02.790

Version: Not Applicable (or Unknown)

License: [Leiden University Non-exclusive license](#)

Downloaded from: <https://hdl.handle.net/1887/114637>

Note: To cite this publication please use the final published version (if applicable).

Bone marrow lesions on magnetic resonance imaging in hand osteoarthritis are associated with pain and interact with synovitis



R. Liu †, W. Damman †, M. Reijnierse ‡, J.L. Bloem ‡, F.R. Rosendaal §, M. Kloppenburg †*

† Department of Rheumatology, Leiden University Medical Center, Leiden, The Netherlands

‡ Department of Radiology, Leiden University Medical Center, Leiden, The Netherlands

§ Department of Clinical Epidemiology, Leiden University Medical Center, Leiden, The Netherlands

ARTICLE INFO

Article history:

Received 15 September 2016

Accepted 7 February 2017

Keywords:

Osteoarthritis

MR imaging

Pain

Hand

Synovitis

Bone marrow lesions

SUMMARY

Objective: To determine the association between bone marrow lesions (BMLs) and (teno)synovitis as assessed on magnetic resonance (MR) imaging in patients with pain in hand osteoarthritis (OA).

Methods: In 105 consecutive primary hand OA patients (83% women, mean age 59 years), who were diagnosed by rheumatologists and included in the HOSTAS (Hand OSTeoArthritis in Secondary care) cohort, contrast enhanced MR imaging of right distal and proximal interphalangeal joints were obtained. In 92 patients joint site specific pain upon palpation was assessed within 3 weeks of magnetic resonance imaging (MRI) examination.

MR features were scored (0–3) following the Oslo hand OA score: BMLs, synovitis, cysts, flexor tenosynovitis (FTS). Additionally, extensor tendon inflammation (ETI) (0–3) was scored. Odds ratios (OR, 95% confidence interval (CI)) were calculated using generalized estimating equations for MR features with joint pain, adjusted for putative confounders. Stratified analyses were performed to investigate interaction.

Results: BMLs, synovitis, cysts, FTS and ETI were demonstrated in 56%, 90%, 22%, 16% and 30% of patients, respectively. BMLs (grade 2/3 vs 0: 3.5 (1.6–7.7)) and synovitis (3 vs 0: OR 3.6 (95% CI 1.9–6.6)) were severity-dependent associated with joint pain, but FTS and ETI were not. Stratified analyses showed that BMLs did not associate with pain in the absence of synovitis, whereas synovitis was associated with pain in the absence of BMLs. Interaction was seen between BMLs and synovitis grade 2 or 3.

Conclusion: In hand OA patients severe synovitis is associated with joint pain, which is worsened when BMLs co-occur, suggesting synovitis as primary target of treatment.

© 2017 Osteoarthritis Research Society International. Published by Elsevier Ltd. All rights reserved.

Introduction

Hand osteoarthritis (OA) can result in a high clinical burden. Especially hand pain can lead to a decreased quality of life¹. Knowledge of the underlying pain mechanisms in hand OA enables optimal treatment of hand pain. Many ultrasonography studies in hand OA patients demonstrated that synovial inflammation is present in hand OA and plays a role in the presence of hand pain. Tenosynovitis of the flexor tendon is also present in hand OA and associated with hand pain^{2,3}, but the involvement of the extensor tendon is unknown.

Magnetic resonance (MR) studies have indicated that in the subchondral bone of osteoarthritic joints ill-defined areas of high signal intensity can be visualized on fat-suppressed T2 weighted or short tau inversion recovery (STIR) sequences, so-called bone marrow lesions (BMLs)⁴. Histologically BMLs represent mainly areas of fibrosis, necrosis and trabecular bone abnormalities⁵. In knee OA these BMLs have been widely investigated and play a role in knee pain⁶. BMLs in hand OA have been rarely studied. In two studies of late stage hand OA patients the presence of BMLs has been demonstrated^{2,3}. Haugen *et al.* showed an association between BMLs and hand pain, both cross-sectionally and longitudinally^{2,3,7}.

Since no data of BMLs in patients in earlier stages of hand OA are available, we set-up a study to determine their prevalence in patients presenting themselves to our Rheumatology outpatient clinic. It is unclear how BMLs relate to synovitis in osteoarthritic hand joints and therefore we do not know whether synovitis or

* Address correspondence and reprint requests to: M. Kloppenburg, Department of Rheumatology, Leiden University Medical Center, C1-R, PO Box 9600, 2300 RC Leiden, The Netherlands. Fax: 31-71-5266752.

E-mail address: g.kloppenburg@lumc.nl (M. Kloppenburg).

BMLs are crucial in hand pain. Hence we investigated their occurrence and interaction with respect to pain, to be able to determine which target is most promising to alleviate pain. This is also important, since imaging synovitis is difficult due to the need for contrast enhanced MR imaging, which adds cost, complexity and risk to the MR imaging protocol. We also investigated whether extensor tendon inflammation plays a role in hand OA.

Methods

Study design

Cross-sectional data were used of the HOSTAS (Hand OSTeoArthritis in Secondary care) study, an ongoing cohort. This cohort enrolled consecutively diagnosed patients with hand OA since 2009 to investigate determinants of outcome in hand OA. Patients were included when they consulted a rheumatologist at the outpatient clinic of the Leiden University Medical Center (LUMC) for hand complaints and these hand complaints were diagnosed as primary hand OA.

Exclusion criteria include any other pathological condition that could explain existing symptoms, secondary OA and routine magnetic resonance imaging (MRI)-contraindications.

For the present analysis, only patients were included who received a contrast enhanced MRI (CE-MRI).

Written informed consent was obtained from all participants. The study was approved by the LUMC medical ethical committee.

Demographics and clinical characteristics

Standardized questionnaires were used to collect demographics and clinical characteristics. Participants underwent standardized physical examination of their hands by a trained research nurse. All distal interphalangeal (DIP), proximal interphalangeal (PIP) joints, metacarpal phalangeal (MCP) joints, first interphalangeal (IP) joints and first carpometacarpal (CMC) joints were evaluated for site specific pain upon palpation (0–30, additive scale)⁸.

Self-reported pain

Pain intensity in the right hand was measured by a pain visual analogue scale (VAS). Furthermore, the Michigan Hand Outcomes Questionnaire (MHQ) pain subscale was filled in (5-point Likert scale and normalization to 0–100, higher scores = greater pain)⁹. Also the pain subscale of the Australian Canadian Hand OA Index (AUSCAN) in its Likert format was acquired¹⁰. Both MHQ and AUSCAN assess hand pain in both hands simultaneously.

Mental health

Subscales of the 36-item Short Form Health Survey (SF-36) were measured to calculate the mental health component score. This component score was standardized using data based on the norms from the Dutch population^{11,12}.

MR imaging

From March 2011 to October 2012, MR imaging was performed as part of the baseline examination of the patients included in HOSTAS, using an ONI-MSK-Extreme 1.5 Tesla (T) extremity MR imaging scanner (GE, Wisconsin, USA), with a dedicated 100 mm coil. The right hand PIP and DIP joints ($n = 8$) of each patient were examined, regardless of clinical features or dominance.

The following sequences were used: coronal T1-weighted (T1-w) fast spin echo (FSE) images (repetition time (TR)/echo time

(TE) 575/11 milliseconds (ms), acquisition matrix (AM) 388×288 , echo train length (ETL) 2, minimum TE), axial T1-w FSE images (TR/TE 500/10.2 ms, AM 340×288 , ETL 2, minimum TE), coronal T2-w FSE images with frequency selective fat saturation (FSFS) (TR/TE 3000/61.8 ms, AM 300×224 , ETL 7) and axial T2-w FSE images with FSFS (TR/TE 3000/57 ms, AM 336×192 , ETL 7) before contrast injection, and coronal T1-w FSE images with FSFS (TR/TE 600/10.4 ms, AM 364×224 , ETL 2, minimum TE) and axial T1-w FSE images with FSFS (TR/TE 650/7.7 ms, AM 320×192 , ETL 2, minimum TE) after intravenous injection of Gadolinium-chelate (Gd) (gadoteric acid, Guerbet, standard dose 0.1 mmol/kg).

Coronal images had a field of view of 120 mm and 18 slices with a slice thickness of 2 mm and a slice gap of 0.2 mm. Axial images had a field of view of 100 mm and 24 slices with a slice thickness of 3 mm and a slice gap of 0.3 mm. Total acquisition time was 30 min.

MR imaging scoring was performed by one dedicated well-trained reader (RL) (supervised by radiologist MR with more than 20 years experience) using a modified version of the Oslo hand OA MR imaging scoring system¹³ (Fig. 1). Scoring was performed blinded for demographic and clinical data.

Synovitis was defined as an area in the synovial membrane that showed post-Gd enhancement of a thickness greater than the width of normal synovium (>1 mm)¹³ on T1-w images and seen on at least two consecutive slices. Scoring was based using thirds of the maximum potential volume of enhanced synovial tissue (0 = normal, 1 = mild, 2 = moderate and 3 = severe).

Flexor tenosynovitis (FTS) was defined as an area in the flexor tendon sheath that showed post-Gd enhancement of a thickness greater than the normal width of the tendon sheath (as shown in the Oslo atlas) on T1-w images, visible on at least two consecutive slices and involving the entire tendon sheath by being circumferential. Scoring occurred as follows: 0 = normal, 1 = <0.5 tendon thickness, 2 = ≥ 0.5 and <1 tendon thickness, 3 = ≥ 1 tendon thickness.

Extensor tendon inflammation (ETI) was defined as an area in the extensor tendon that showed enhancement of a thickness greater than the normal width of the tendon, is visible on at least two consecutive slices and when opposite sides of the extensor were enhanced. Scoring was performed according to the same scoring method as the flexor tendon: 0 = normal, 1 = <0.5 tendon thickness, 2 = ≥ 0.5 and <1 tendon thickness, 3 = ≥ 1 tendon thickness.

BMLs at distal and proximal joint site were defined as lesions within the trabecular bone with signal characteristics consistent with increased water content and ill-defined margins on T2. The distal and proximal part of the joint was scored separately for the proportion of bone with BML: 0 = no BML, 1 = 1–33 % of bone with BML, 2 = 34–66% of bone with BML, 3 = 67–100% of bone with BML. The highest score was taken as the BML score for the whole joint.

Cysts (0–1; absent or present) at distal and proximal joint site were defined as sharply marginated bone lesions with typical signal characteristics (Low signal intensity on T1 pre-gadolinium and high signal intensity on T2), which is visible in two planes without a cortical break.

One of the authors (RL) re-scored 11 randomly selected MR scans after at least 3 weeks, and the intra-reader reliability for synovitis, FTS, BML and cyst was high (intraclass correlation coefficient (ICC) ≥ 0.97), while the ICC for ETI was intermediate (ICC 0.76).

Radiographs

Conventional radiographs of the hands (dorso-volar) were obtained. The DIP joints, PIP joints, first IP joints, MCP joints and first CMC joints were scored by one of the authors (WD). The Kellgren–Lawrence (KL) grading scale (0–4, maximum score 120) was used for the scoring of structural osteoarthritic damage and the Verbruggen–Veys anatomical phase scoring was used for erosion (N-

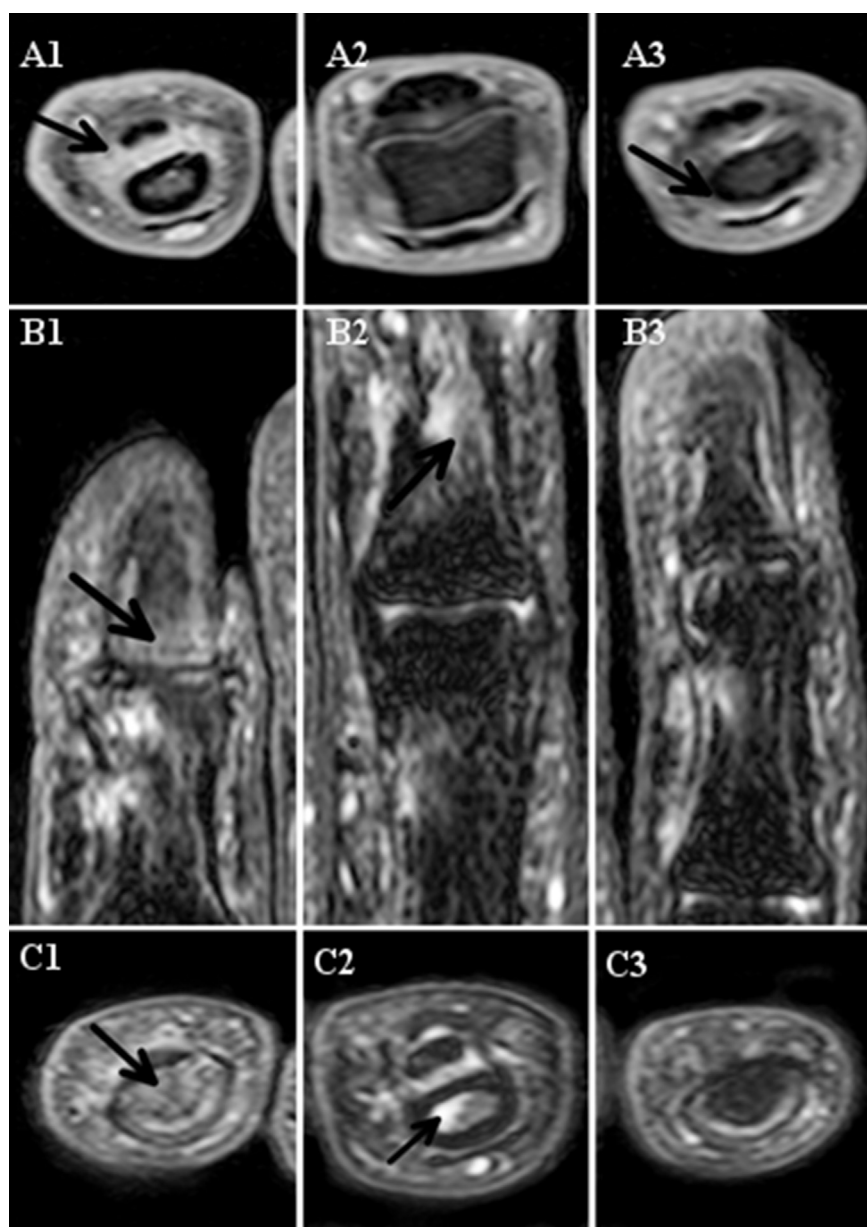


Fig. 1. Axial (A) T1-weighted FSE images with FSFS post-gadolinium enhancement, axial (C) and coronal (B) T2-weighted FSE images with FSFS MR imaging of the same patient: Synovitis (A1) and BML (B1, C1) were present in the painful second DIP joint. A non-painful third PIP joint with BML (B2, C2) and no synovitis (A2). Synovitis (A3) without the presence of BML (B3, C3) in the painful fourth DIP joint.

S-J-E-R depicted as 0-1-2-3-4, maximum score 120). Joints were considered erosive when they were in phase E (erosive) or R (remodeled). The dedicated well-trained scorer (WD) (supervised by MK with more than 10 years experience in scoring hand radiographs) was blinded for clinical and demographic data. Intra-reader reproducibility, taking in account the severity of the score, depicted by the ICC was assessed on a randomly selected sample ($n = 31$) of radiographs and was high (ICC for KL 0.91 and for Verbruggen–Veys 0.86).

Statistics

Odds ratios (ORs) with 95% confidence intervals (CIs) were calculated using generalized estimating equations (GEEs) to investigate the association between MR imaging features with site specific pain upon palpation in DIP and PIP joints, while adjusting for age, sex, body mass index (BMI) and patient effect. Additionally, ORs with 95% CIs were calculated with logistic regression for the association

between summated MR imaging scores and self-reported pain, with adjustment for age, sex, BMI, mental health and KL score. The cut-off for the VAS pain, MHQ pain and AUSCAN pain was the median. Furthermore, a stratified analysis was performed to investigate BMLs and the effect of synovitis in site specific pain upon palpation.

If more than 3 weeks elapsed between the time of MR imaging and physical examination, the data were excluded from this analysis.

Results

Study population

In 105 patients (83% women, median age 59.4 years, 91% fulfilled the American College of Rheumatology (ACR) criteria for hand OA¹⁴.

MR imaging was obtained from 840 joints of the right hand (Table I). In eight DIP and PIP joints of the right hand, the median

number of hand joints with a KL grade of at least 2 was 2 (0–8) and percentage of erosive hand OA was 23%. Due to technical problems, in three and four joints no BMLs or synovitis could be scored respectively. Other features such as cysts could be evaluated in all joints.

In 92 patients physical examination was performed within 3 weeks of the MR imaging and the association between MR imaging features with hand pain was analyzed. Patient and clinical characteristics from these 92 patients did not differ from the total population of 105 patients (data not shown).

Prevalence of BMLs, synovitis, tendon inflammation and cysts

BMLs were present in 56% of the 105 patients and synovitis in 90%. Abnormalities in tendons were found less often: FTS in 16%, while ETI was seen in 30%. Cysts was seen in 22% of the patients (Table II). BMLs was preferentially seen in DIP 2, 3 and PIP 2, synovitis in DIP 2, 3 and PIP 2 through 5, FTS in PIP 3 and ETI in PIP 5 (Fig. 2).

Association between MR imaging features and site specific pain upon palpation in right DIP and PIP joints

736 joints in the 92 patients were available for the investigation of the association between MR imaging features and pain. After adjustment for age, sex, BMI and patient effect, BMLs and synovitis were associated with pain in the site specific joint upon palpation (Table III).

FTS, ETI and cyst in the tendons were not associated with pain upon palpation in the joint.

On conventional radiographs, structural osteoarthritic damage, as characterized by KL grade of at least 2, was also associated with pain (Table III).

Additional analyses including BML and synovitis together in the multivariate analyses showed associations for BMLs (grade 2 + 3 vs 0: OR 3.5 (1.6–7.7)) and synovitis (grade 3 vs 0: OR 3.6 (95% CI 1.9–6.6)). The associations between BMLs or synovitis with pain remained after adjustment for structural damage in the joint. Structural damage was characterized by a KL score of at least 2. When KL score was added to the analyses, KL score was no longer statistical significantly associated after adjustment for BMLs and synovitis (Table III).

Table I

Baseline characteristics of 105 consecutive hand OA patients diagnosed at an outpatient clinic of rheumatology

Variable*	Hand OA patients (n = 105)
Age, yrs	59.4 (40.4–79.9)
Female sex, n (%)	87 (83)
BMI	26.9 (17.6–40.7)
Symptom duration, yrs	5.3 (0.33–36.8)
ACR criteria hand OA, n (%)	95 (91)
- Radiographic hand OA†, n of patients (%)	92 (88)
Assessment of 8 scanned joints	
- Erosive hand OA, n of patients (%)‡	24 (23)
- Number of joints with KL ≥ 2	2 (0–8)
- Number of site specific painful joints upon palpation	1 (0–8)
Self-reported symptoms	
VAS pain right hand, mm	36 (0–83)
VAS pain left hand, mm	34 (0–83)
AUSCAN pain (0–20)	10 (0–20)
MHQ pain (0–100)	45 (0–95)

Eight joints: PIPs, DIPs right hand.

* Median (range) unless otherwise stated.

† At least one joint with KL score ≥ 2.

‡ At least one erosive IP joint in the right hand.

Table II

Prevalence of MR imaging features in DIP and PIP joints of the right hand in 105 patients with hand OA

MR imaging feature	Hand OA patients (n = 105)
Joint	
BML	
Patients, n (%)	59 (56)
Joints, median (range)	1 (0–6)
Synovitis	
Patient, n (%)	94 (90)
Joints, median (range)	3 (0–8)
Flexor tendon	
Tenosynovitis	
Patient, n (%)	17 (16)
Joints (range)	0 (0–4)
Extensor tendon	
Tendon inflammation	
Patient, n (%)	31 (30)
Joints, median (range)	0 (0–8)
Cyst	
Patients, n (%)	23 (22)
Joints, median (range)	0 (0–3)

Interaction between BMLs and synovitis in their association with site specific pain upon palpation

BMLs and synovitis often co-occurred. This co-occurrence could conceal their relative contribution in the association with site specific pain upon palpation. Therefore, a stratified analysis was performed to investigate BMLs and the sole effect of synovitis in site specific pain upon palpation and to elucidate potential interaction between BMLs and synovitis. Seven percent (n = 54) of the hand joints were painful upon palpation in the absence of both BMLs and synovitis. In 231 hand joints, synovitis was present while BMLs were absent. When grade 3 synovitis was present without BMLs (n = 20), seven joints (35%) were painful upon palpation. BMLs, both small and moderate/severe lesions, were seldom present when synovitis was absent (33 joints of 416 joints without synovitis had a BML grade 1 and only one joint had a BML grade 2/3); BMLs did not have an effect on pain in the absence of synovitis. In joints where BMLs and moderate and severe synovitis (grade 2 or 3) co-occur (n = 49), 26 (53%) of these joints were painful upon palpation. The associations between MR imaging features and pain in the different strata are depicted in Table IV and examples are shown in Fig. 1. In the joints with moderate synovitis (grade 2) the co-occurrence with BMLs resulted in an increased risk for site specific pain upon palpation when compared to joints without BMLs (5.1 (2.1–12.2) instead of 1.2 (0.4–3.2)) (Table IV). While the basic risk for site specific pain upon palpation for sole BMLs or moderate synovitis is 1 (background risk = 1 + 0.2 (synovitis risk) – 0.2 (BML risk)), whereas the risk for co-occurrence of synovitis grade 2 and BMLs is 5.1; therefore a clear interaction can be demonstrated. In joints with severe synovitis (grade 3) a comparable interaction is seen: the basic risk for site specific pain upon palpation for sole BMLs or severe synovitis is 2.1 (background risk = 1 + 1.3(synovitis risk) – 0.2 (BML risk)). Whereas the risk for site specific pain upon palpation for the co-occurrence of severe synovitis and BMLs is 6.9.

Adjustment for KL grade did not change these interactions (data not shown).

Association between MR imaging features and self-reported pain

No association was seen between the summated score of MR imaging features and self-reported VAS pain of the right hand, AUSCAN pain and MHQ pain (data not shown).

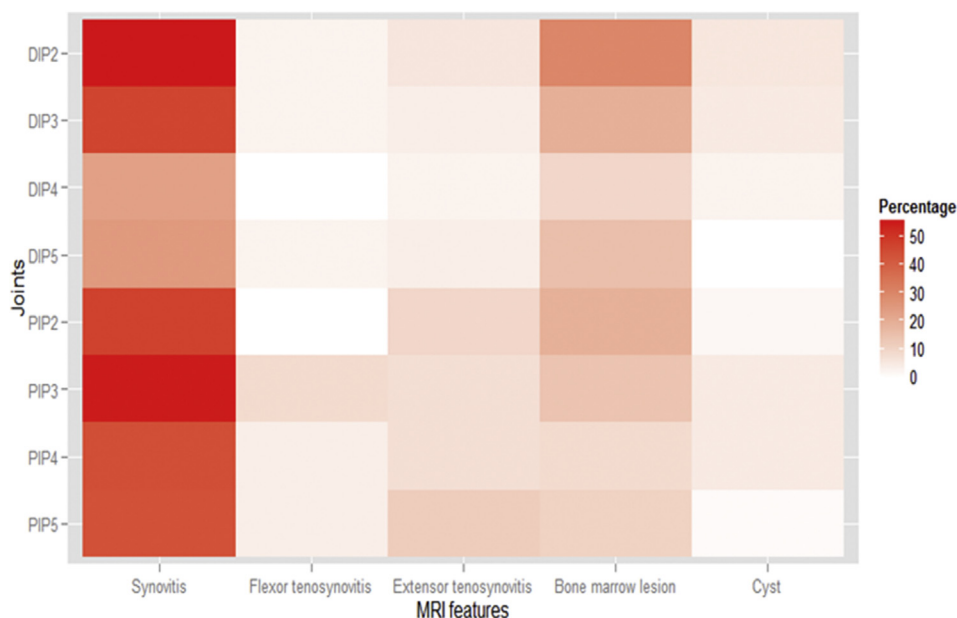


Fig. 2. Prevalence (percentage of patients) of MR imaging features in all PIP and DIP joints of the right hand in 105 consecutive patients with hand OA diagnosed at a rheumatology outpatient clinic.

Discussion

In 840 IP joints from 105 hand OA patients BMLs, (teno)synovitis, tendon inflammation and cysts were frequently seen. Both BMLs and synovitis were associated with site specific pain upon palpation. Novel in this study is that BMLs alone were not associated with pain, whereas severe synovitis alone was, and that a clear

interaction between BMLs and synovitis was seen. In 53 % of joints with BMLs and moderate to severe synovitis, site specific pain upon palpation was observed, resulting in a nearly 7-fold increased risk for pain when compared to IP joint without BMLs or synovitis. This is an important finding, identifying synovitis as primary possible target in future therapeutic options.

Table III
Association between MR imaging features and 736 DIP and PIP joints assessed for site specific pain upon palpation in 92 patients with hand OA

Joint	Pain joint +/-	Adjusted OR (95% CI)*	Adjusted OR (95% CI)†	Adjusted OR (95% CI)‡
BML				
Grade 0	96/518	1.0	1.0	1.0
Grade 1	20/67	1.5 (0.9–2.5)	1.2 (0.7–2.2)	1.1 (0.6–2.0)
Grades 2 + 3	18/14	6.3 (2.9–13.8)	3.5 (1.6–7.7)	3.1 (1.4–7.1)
Synovitis				
Grade 0	59/357	1.0	1.0	1.0
Grade 1	36/178	1.2 (0.8–1.8)	1.1 (0.8–1.7)	1.1 (0.7–1.6)
Grade 2	18/40	2.6 (1.4–4.6)	1.9 (1.01–3.6)	1.8 (0.96–3.6)
Grade 3	20/24	5.4 (2.8–10.4)	3.6 (1.9–6.6)	3.2 (1.7–6.3)
Flexor tendon				
Tenosynovitis				
Grade 0	130/585	1.0		
Grade 1	3/14	0.7 (0.2–2.4)		
Extensor tendon				
Inflammation				
Grade 0	121/568	1.0		
Grade 1	12/31	1.3 (0.6–3.0)		
Cyst				
Grade 0	130/584	1.0		
Grade 1	4/18	1.0 (0.4–2.6)		
Structural damage				
KL				
<2	76/447	1.0		1.0
≥2	55/150	2.1 (1.4–3.0)		1.3 (0.9–2.0)

NA = not applicable.
 * Adjusted for age, sex, BMI and patient effect.
 † Multivariate model with age, sex, BMI, patient effect, synovitis, and BMLs.
 ‡ Multivariate model with age, sex, BMI, patient effect, synovitis, BMLs and KL score (<2 vs ≥2).

Though previous MR imaging studies in hand OA have been scarce, knee OA has been the topic of extensive research. Features such as BMLs and synovitis are often associated with pain in such studies^{6,15–17}. It is possible that a similar interaction between the two features also exists in knee OA and may explain the inconsistency of the results. Unfortunately, further distinction between the two features and its possible interaction have not been investigated as we have done with our study.

Neither FTS nor ETI nor cysts were associated with pain. FTS was investigated previously and was associated with pain, when only corrected for age and sex³. We could not replicate these results. A possible explanation lies in a difference of study population and differences in the methods of the studies. The prevalence (median = 1) of joints with FTS and the number of painful joints (median = 4) in the other study was higher while patients were older (mean = 68.8)³. To our best knowledge, this is the first study to report on the presence of ETI in hand OA. The anatomic absence of a tendon sheath and close relation with the joint made us question whether a direct relation between ETI and joint pain would be present. This MR feature was found in a third of the

Table IV
OR (with 95% CI)* of site specific pain upon palpation by synovitis status and the presence or absence of BMLs in 732 joints of 92 patients with hand OA

	No synovitis N = 416	Synovitis		
		Grade 1 N = 214	Grade 2 N = 58	Grade 3 N = 44
BMLs absent	1 (background) N = 382	1.2 (0.8–1.8) N = 178	1.2 (0.4–3.2) N = 33	2.3 (0.96–5.7) N = 20
BMLs present	0.8 (0.2–2.8) N = 34	1.3 (0.6–3.2) N = 36	5.1 (2.1–12.2) N = 25	6.9 (2.7–17.7) N = 24

*Adjusted for age, sex and BMI.

patients. Though no association was found between ETI and pain, it is possible that this feature is associated with other clinical properties, such as hand mobility. More studies will be needed to further investigate this feature.

Our study also has its limitations. We have employed a modified version of the hand OA MR imaging scoring system, a system developed in recent years. However we used a 1.5 T MR systems, which would produce different images than the 1.0 T systems used to develop the initial score. Based on previous studies in OA, we have incorporated additional features such as ETI to further investigate our own understanding of the association between MR imaging features and clinical signs of OA.

Since insertion sites of the deep and superficial parts of the flexor and extensor tendons differ between DIP and PIP joints, it could be useful to analyze these groups of joints separately. Due to low numbers this was not possible in our study.

The reliability of the MRI scorings yielded mostly good results for the features investigated in our study. The ICC for ETI was lower than the other features, but still performed better when compared to the ICC of FTS in another MRI study¹³. Future studies will be necessary to investigate if ETI is perhaps a more difficult feature to define or the definition needs further adaptation.

The study population consists of a relatively large proportion of women (83%). Hand OA occurs more often in women than in men¹⁸. This could explain the high female participation rate in both our study group and in a previous MR imaging study for hand OA where 91% of the study population consisted of women³.

Our results illustrate the advantages of MR imaging over radiographs and ultrasonography. Features such as BMLs and synovitis offer better agreement with the clinical assessment of a patient. We have found that the presence of BMLs and synovitis on joint level are both independently associated with site specific pain upon palpation, when corrected for age, sex, BMI, KL-grade and patient effect. BMLs and synovitis are not associated with self-reported pain on the patient level, which may be explained by an inability to correct for the individual patient effect. Pain is subjective and it will be challenging to discover which known and unknown variables will all contribute to the patient effect. We hypothesized that mental health may explain this patient effect, but this was not the case. The involvement of the CMC joint may be another one of such variables, as previous study has shown that this joint contributes more to pain than IP joints. Unfortunately, we could not further test our theories due to lack of information¹⁹.

Author contributions

All authors have made substantial contributions to the following: (1) the conception and design of the study, or acquisition of data, or analysis and interpretation of data, (2) drafting the article or revising it critically for important intellectual content, (3) final approval of the version to be submitted.

RL and MK take responsibility for the integrity of the work as a whole, from inception to finished article.

Conflict of interest

None to declare.

Role of the funding source

Corresponding author is funded by the Dutch Arthritis Association (NR10-1-405). The funding sources had no role in the study design, collection, analysis and interpretation of data; in the writing of the manuscript; and in the decision to submit the manuscript for publication.

References

- Kloppenburg M, Kwok WY. Hand osteoarthritis – a heterogeneous disorder. *Nat Rev Rheumatol* 2012;8:22–31.
- Wittoek R, Jans L, Lambrecht V, Carron P, Verstraete K, Verbruggen G. Reliability and construct validity of ultrasonography of soft tissue and destructive changes in erosive osteoarthritis of the interphalangeal finger joints: a comparison with MRI. *Ann Rheum Dis* 2011;70:278–83.
- Haugen IK, Boyesen P, Slatkowsky-Christensen B, Sesseng S, van der Heijde D, Kvien TK. Associations between MRI-defined synovitis, bone marrow lesions and structural features and measures of pain and physical function in hand osteoarthritis. *Ann Rheum Dis* 2012;71:899–904.
- Haugen IK, Hammer HB. Role of modern imaging techniques in hand osteoarthritis research and clinical practice. *Curr Rheumatol Rep* 2014;16:399.
- Del GF, Farahani SJ, Carrino JA, Chhabra A. Bone marrow lesions: a systematic diagnostic approach. *Indian J Radiol Imaging* 2014;24:279–87.
- Yusuf E, Kortekaas MC, Watt I, Huizinga TW, Kloppenburg M. Do knee abnormalities visualised on MRI explain knee pain in knee osteoarthritis? A systematic review. *Ann Rheum Dis* 2011;70:60–7.
- Haugen IK, Slatkowsky CB, Boyesen P, Sesseng S, van der Heijde D, Kvien TK. Increasing synovitis and bone marrow lesions are associated with incident joint tenderness in hand osteoarthritis. *Ann Rheum Dis* 2016;75:702–8.
- Bijsterbosch J, Wassenaar MJ, le CS, Slagboom PE, Rosendaal FR, Huizinga TW, et al. Doyle Index is a valuable additional pain measure in osteoarthritis. *Osteoarthritis Cartilage* 2010;18:1046–50.
- Chung KC, Pillsbury MS, Walters MR, Hayward RA. Reliability and validity testing of the Michigan hand outcomes questionnaire. *J Hand Surg Am* 1998;23:575–87.
- Bellamy N, Campbell J, Haraoui B, Gercz-Simon E, Buchbinder R, Hobby K, et al. Clinimetric properties of the AUSCAN Osteoarthritis Hand Index: an evaluation of reliability, validity and responsiveness. *Osteoarthritis Cartilage* 2002;10:863–9.
- Ware Jr JE, Sherbourne CD. The MOS 36-item short-form health survey (SF-36). I. Conceptual framework and item selection. *Med Care* 1992;30:473–83.
- Aaronson NK, Muller M, Cohen PD, Essink-Bot ML, Fekkes M, Sanderman R, et al. Translation, validation, and norming of the Dutch language version of the SF-36 Health Survey in community and chronic disease populations. *J Clin Epidemiol* 1998;51:1055–68.
- Haugen IK, Lillegraven S, Slatkowsky-Christensen B, Haavardsholm EA, Sesseng S, Kvien TK, et al. Hand osteoarthritis and MRI: development and first validation step of the proposed Oslo Hand Osteoarthritis MRI score. *Ann Rheum Dis* 2011;70:1033–8.
- Altman R, Alarcon G, Appelrouth D, Bloch D, Borenstein D, Brandt K, et al. The American College of Rheumatology criteria for the classification and reporting of osteoarthritis of the hand. *Arthritis Rheum* 1990;33:1601–10.
- Torres L, Dunlop DD, Peterfy C, Guermazi A, Prasad P, Hayes KW, et al. The relationship between specific tissue lesions and pain severity in persons with knee osteoarthritis. *Osteoarthritis Cartilage* 2006;14:1033–40.
- Kornaat PR, Kloppenburg M, Sharma R, Botha-Scheepers SA, Le Graverand MP, Coene LN, et al. Bone marrow edema-like lesions change in volume in the majority of patients with

- osteoarthritis; associations with clinical features. *Eur Radiol* 2007;17:3073–8.
17. Hill CL, Hunter DJ, Niu J, Clancy M, Guermazi A, Genant H, *et al.* Synovitis detected on magnetic resonance imaging and its relation to pain and cartilage loss in knee osteoarthritis. *Ann Rheum Dis* 2007;66:1599–603.
 18. Srikanth VK, Fryer JL, Zhai G, Winzenberg TM, Hosmer D, Jones G. A meta-analysis of sex differences prevalence, incidence and severity of osteoarthritis. *Osteoarthritis Cartilage* 2005;13:769–81.
 19. Bijsterbosch J, Visser W, Kroon HM, Stamm T, Meulenbelt I, Huizinga TW, *et al.* Thumb base involvement in symptomatic hand osteoarthritis is associated with more pain and functional disability. *Ann Rheum Dis* 2010;69:585–7.