



Universiteit  
Leiden  
The Netherlands

## Four-Gene Pan-African Blood Signature Predicts Progression to Tuberculosis

Suliman, S.; Thompson, E.G.; Sutherland, J.; Weiner, J.; Ota, M.O.C.; Shankar, S.; ... ; Adolescent Cohort Study Grp

### Citation

Suliman, S., Thompson, E. G., Sutherland, J., Weiner, J., Ota, M. O. C., Shankar, S., ... Walzl, G. (2018). Four-Gene Pan-African Blood Signature Predicts Progression to Tuberculosis. *American Journal Of Respiratory And Critical Care Medicine*, 197(9), 1198-1208. doi:10.1164/rccm.201711-2340OC

Version: Not Applicable (or Unknown)

License: [Leiden University Non-exclusive license](#)

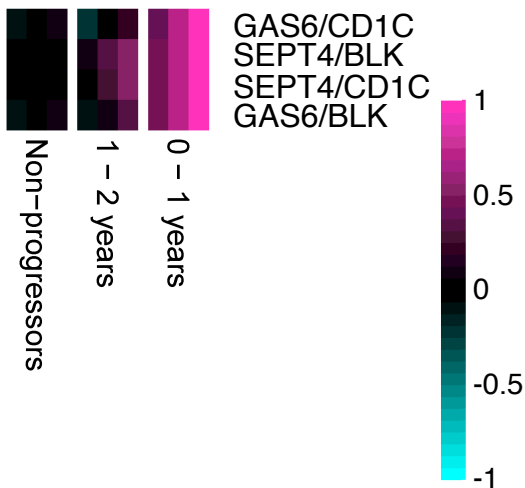
Downloaded from: <https://hdl.handle.net/1887/77724>

**Note:** To cite this publication please use the final published version (if applicable).

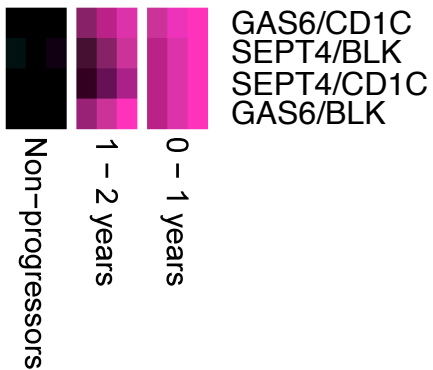
Fig 3

A) RISK4 Signature

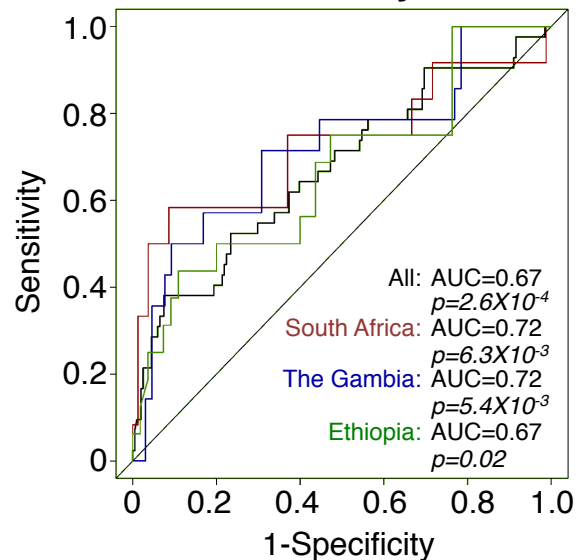
South Africa



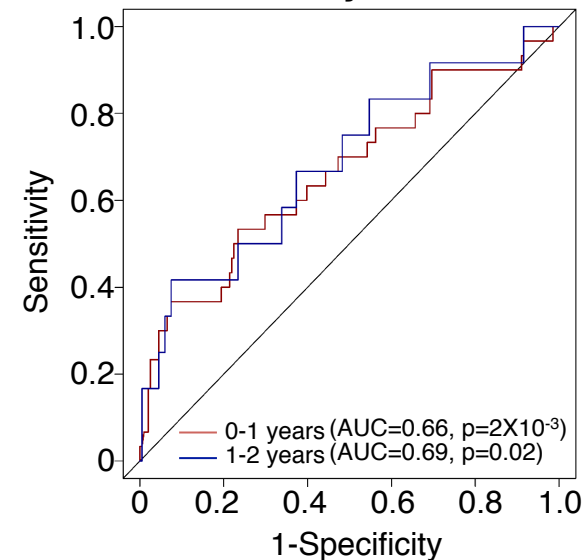
The Gambia



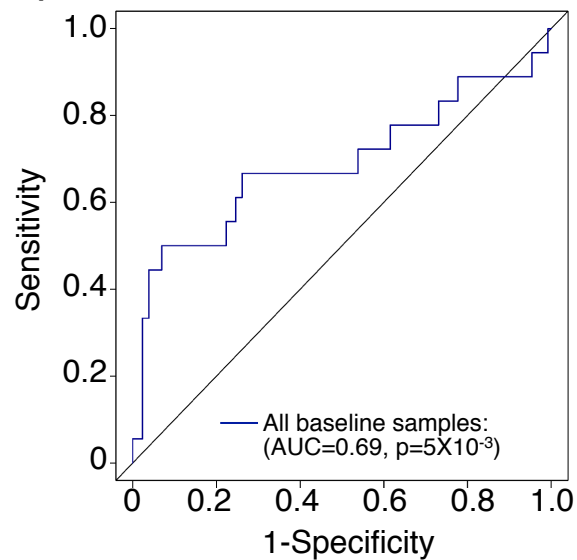
B) Validation by site



C) Validation by time to TB



D) Validation at TB Contact



E) External Validation

